

## LUMINAIRE PHOTOMETRIC TEST REPORT

Test:U:24.00V I:0.7046A P:16.91W PF:1.000 Freq:0Hz  
Lamp Flux:340.758x1 lm

NAME: SF24-24V-2835-288-U2-P

TYPE:

WEIGHT:

SPEC.:

DIM.: Length=1m

SERIAL No.:

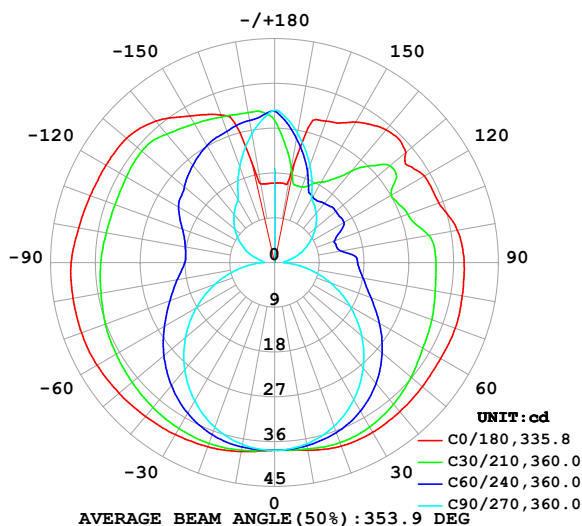
MFR.: OLympia lighting

SUR.:

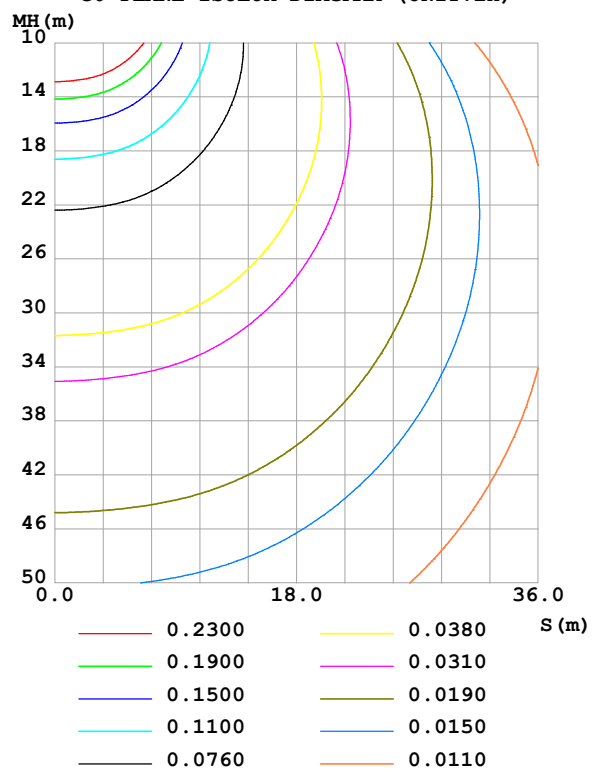
Shielding Angle:

DATA OF LAMP		PHOTOMETRIC DATA				Eff: 20.15 lm/W
MODEL	2835	I <sub>max</sub> (cd)	41.34	S/MH(C0/180)	1.63	
NOMINAL POWER(W)	16	LOR(%)	100.0	S/MH(C90/270)	1.27	
RATED VOLTAGE(V)	24	TOTAL FLUX(lm)	340.76	η UP,DN(C0-180)	21.7,27.5	
NOMINAL FLUX(lm)	340.758	CIE CLASS	DIFFUSE	η UP,DN(C180-360)	22.5,28.2	
LAMPS INSIDE	1	η up (%)	44.2	CIBSE SHR NOM	1.75	
TEST VOLTAGE(V)		η down (%)	55.8	CIBSE SHR MAX	1.75	

LUMINOUS INTENSITY DISTRIBUTION DIAGRAM



C0 PLANE ISOLUX DIAGRAM (UNIT:lx)



C Range: 0 - 360DEG  
C Interval: 30.0DEG  
Test Speed: HIGH  
Temperature:25.3℃  
Operators:  
Test Date:2025-03-03

γ Range: 0 - 180DEG  
γ Interval: 1.0DEG  
Test System:EVERFINE GO-2000B\_V1 SYSTEM V2.00.488  
Humidity:65.0%  
Test Distance:6.360m [K=1.0000]  
Remarks:

## ZONAL FLUX DIAGRAM

## ZONAL FLUX DIAGRAM:

$\gamma$	C0	C45	C90	C135	C180	C225	C270	C315	$\gamma$	$\Phi$ zone	$\Phi$ total	%lum, lamp
10	38.30	37.70	37.02	37.90	38.56	37.97	37.13	37.66	0- 10	3.606	3.606	1.06,1.06
20	39.25	37.43	35.01	37.50	39.38	37.73	35.20	37.30	10- 20	10.67	14.28	4.19,4.19
30	39.41	36.34	31.83	36.35	39.93	36.74	32.13	36.24	20- 30	17.05	31.33	9.19,9.19
40	39.12	34.46	27.71	34.59	40.38	35.17	28.12	34.46	30- 40	22.19	53.52	15.7,15.7
50	38.77	32.04	22.85	32.46	40.81	33.25	23.38	32.21	40- 50	25.77	79.29	23.3,23.3
60	38.56	29.39	17.52	30.19	41.20	31.19	18.17	29.77	50- 60	27.75	107.0	31.4,31.4
70	38.62	27.14	11.97	28.12	41.30	29.33	12.73	27.53	60- 70	28.35	135.4	39.7,39.7
80	38.31	25.45	6.446	26.39	41.15	27.68	7.281	25.72	70- 80	27.88	163.3	47.9,47.9
90	38.09	24.60	1.813	25.35	40.89	26.53	2.308	24.53	80- 90	26.72	190.0	55.8,55.8
100	37.32	22.54	2.832	25.25	40.01	26.33	2.931	22.58	90-100	25.66	215.7	63.3,63.3
110	35.12	20.67	5.466	26.12	39.42	26.95	5.503	20.85	100-110	24.23	239.9	70.4,70.4
120	34.75	21.66	8.097	27.68	39.14	28.38	7.933	22.33	110-120	23.35	263.2	77.2,77.2
130	34.42	23.19	10.71	28.90	38.86	29.29	10.43	23.10	120-130	22.25	285.5	83.8,83.8
140	34.83	19.78	13.02	29.38	37.13	29.66	12.72	20.86	130-140	19.47	304.9	89.5,89.5
150	32.65	17.01	14.91	29.54	34.05	29.73	14.68	18.11	140-150	15.24	320.2	94,94
160	30.26	17.81	20.81	29.73	31.59	29.63	20.55	18.31	150-160	11.09	331.3	97.2,97.2
170	17.05	22.39	26.48	29.98	16.06	29.83	26.30	22.60	160-170	7.030	338.3	99.3,99.3
180	15.98	29.53	30.61	29.62	15.98	29.55	30.59	29.60	170-180	2.449	340.8	100,100
DEG	LUMINOUS INTENSITY:cd									UNIT:lm		

Conical surface Flux(90deg): 66.059 lm

%lum = 19.4%

%lamp = 19.4%

Conical surface Flux(130deg): 121.21 lm

%lum = 35.6%

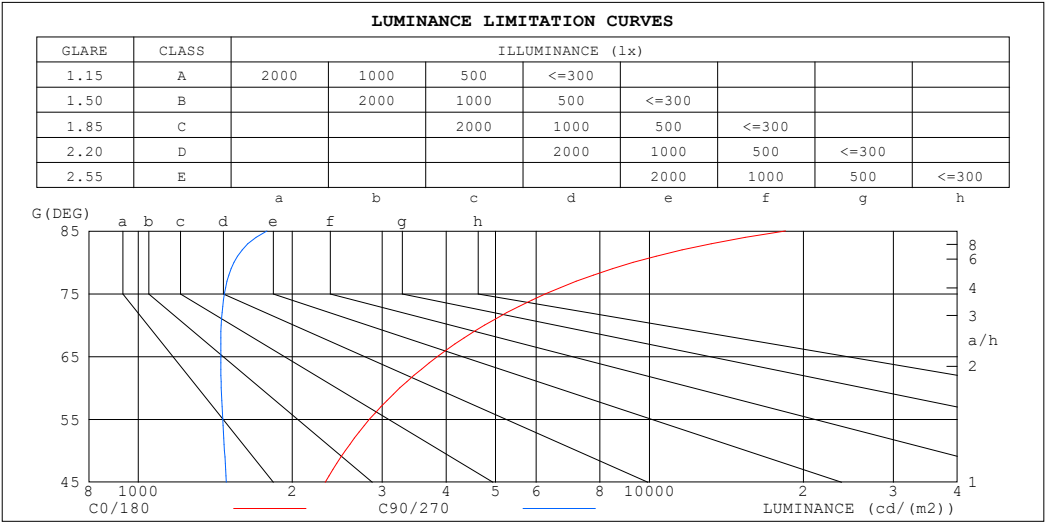
%lamp = 35.6%

C Range: 0 - 360DEG  
 C Interval: 30.0DEG  
 Test Speed: HIGH  
 Temperature:25.3℃  
 Operators:  
 Test Date:2025-03-03

$\gamma$  Range: 0 - 180DEG  
 $\gamma$  Interval: 1.0DEG  
 Test System:EVERFINE GO-2000B\_V1 SYSTEM V2.00.488  
 Humidity:65.0%  
 Test Distance:6.360m [K=1.0000]  
 Remarks:

LUMINANCE LIMITATION CURVES

Test:U:24.00V I:0.7046A P:16.91W PF:1.000 Freq:0Hz Lamp Flux:340.758x1 lm		
NAME: SF24-24V-2835-288-U2-P	TYPE:	WEIGHT:
SPEC.:	DIM.: Length=1m	SERIAL No.:
MFR.: OLympia lighting	SUR.:	Shielding Angle:



LUMINANCE cd/(m2)		
G (DEG)	C0/180	C90/270
85	18449	1784
80	9288	1539
75	6264	1474
70	4755	1452
65	3847	1449
60	3247	1453
55	2833	1462
50	2540	1474
45	2320	1487

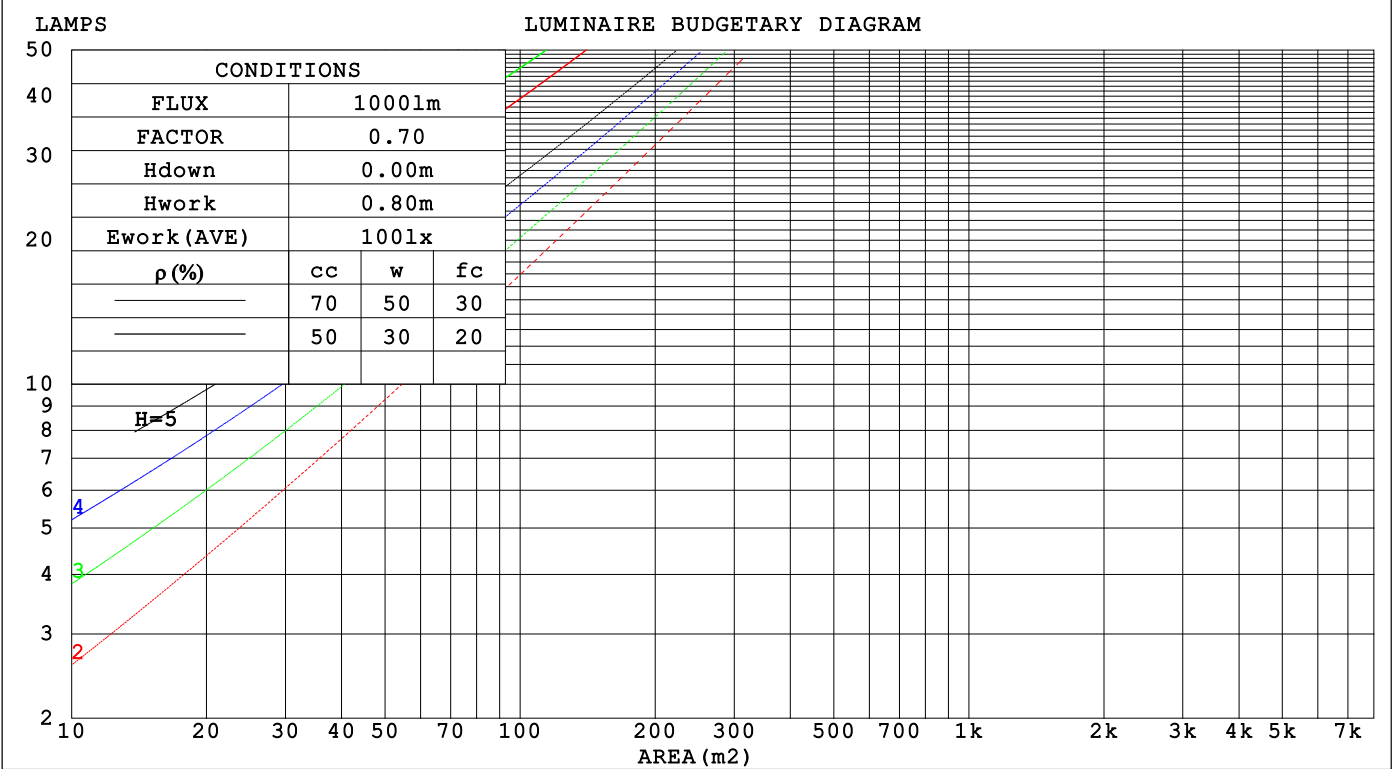
C Range: 0 - 360DEG  
C Interval: 30.0DEG  
Test Speed: HIGH  
Temperature:25.3℃  
Operators:  
Test Date:2025-03-03

γ Range: 0 - 180DEG  
γ Interval: 1.0DEG  
Test System:EVERFINE GO-2000B\_V1 SYSTEM V2.00.488  
Humidity:65.0%  
Test Distance:6.360m [K=1.0000]  
Remarks:

CU AND LUMINAIRE BUDGETARY ESTIMATE DIAGRAM

Test:U:24.00V I:0.7046A P:16.91W PF:1.000 Freq:0Hz		
Lamp Flux:340.758x1 lm		
NAME: SF24-24V-2835-288-U2-P	TYPE:	WEIGHT:
SPEC.:	DIM.: Length=1m	SERIAL No.:
MFR.: OLYMPIA lighting	SUR.:	Shielding Angle:

pcc	80%			70%			50%			30%			10%			0
ρw	50%	30%	10%	50%	30%	10%	50%	30%	10%	50%	30%	10%	50%	30%	10%	0
ρfc	20%			20%			20%			20%			20%			0
RCR	RCR:Room Cavity Ratio			Coefficients of Utilization(CU)												
0.0	1.09	1.09	1.09	1.01	1.01	1.01	.87	.87	.87	.73	.73	.73	.61	.61	.61	.56
1.0	.89	.84	.79	.83	.78	.74	.70	.67	.63	.59	.56	.54	.48	.46	.44	.39
2.0	.76	.68	.62	.70	.64	.58	.60	.54	.50	.50	.46	.42	.41	.38	.35	.30
3.0	.66	.57	.50	.61	.53	.47	.52	.45	.40	.43	.38	.34	.35	.31	.28	.24
4.0	.58	.48	.41	.53	.45	.39	.45	.39	.34	.38	.33	.28	.31	.27	.23	.20
5.0	.51	.42	.35	.47	.39	.33	.40	.33	.28	.33	.28	.24	.27	.23	.20	.17
6.0	.45	.36	.30	.42	.34	.28	.36	.29	.24	.30	.25	.21	.25	.20	.17	.14
7.0	.41	.32	.26	.38	.30	.24	.32	.26	.21	.27	.22	.18	.22	.18	.15	.12
8.0	.37	.28	.23	.34	.27	.21	.29	.23	.19	.25	.20	.16	.20	.16	.13	.11
9.0	.34	.25	.20	.31	.24	.19	.27	.21	.16	.23	.18	.14	.19	.15	.12	.10
10.0	.31	.23	.18	.29	.22	.17	.25	.19	.15	.21	.16	.13	.17	.13	.11	.09



C Range: 0 - 360DEG  
C Interval: 30.0DEG  
Test Speed: HIGH  
Temperature:25.3℃  
Operators:  
Test Date:2025-03-03

γ Range: 0 - 180DEG  
γ Interval: 1.0DEG  
Test System:EVERFINE GO-2000B\_V1 SYSTEM V2.00.488  
Humidity:65.0%  
Test Distance:6.360m [K=1.0000]  
Remarks:

## WEC AND CCEC

Test:U:24.00V I:0.7046A P:16.91W PF:1.000 Freq:0Hz Lamp Flux:340.758x1 lm		
NAME: SF24-24V-2835-288-U2-P	TYPE:	WEIGHT:
SPEC.:	DIM.: Length=1m	SERIAL No.:
MFR.: OLympia lighting	SUR.:	Shielding Angle:

pcc	80%	70%	50%	30%	10%	0
pw	50% 30% 10%	50% 30% 10%	50% 30% 10%	50% 30% 10%	50% 30% 10%	0
pfc	20%	20%	20%	20%	20%	0
RCR	RCR:Room Cavity Ratio					Wall Exitance Coefficients(WEC)
0.0						
1.0	.384 .218 .069	.363 .207 .066	.325 .186 .059	.289 .167 .053	.256 .149 .048	
2.0	.327 .179 .055	.308 .170 .052	.272 .152 .047	.240 .135 .042	.210 .119 .037	
3.0	.288 .153 .046	.271 .145 .044	.239 .129 .039	.209 .114 .035	.181 .100 .031	
4.0	.258 .134 .039	.243 .127 .038	.213 .113 .034	.186 .100 .030	.160 .087 .026	
5.0	.234 .119 .035	.220 .113 .033	.193 .100 .030	.167 .088 .026	.144 .077 .023	
6.0	.214 .107 .031	.201 .102 .029	.176 .090 .026	.153 .079 .023	.131 .069 .020	
7.0	.197 .098 .028	.185 .092 .026	.162 .082 .024	.140 .072 .021	.120 .062 .018	
8.0	.183 .089 .025	.172 .085 .024	.150 .075 .021	.130 .066 .019	.111 .057 .017	
9.0	.170 .082 .023	.160 .078 .022	.140 .069 .020	.121 .061 .017	.103 .053 .015	
10.0	.159 .076 .021	.150 .072 .020	.131 .064 .018	.113 .056 .016	.097 .049 .014	

pcc	80%	70%	50%	30%	10%	0
pw	50% 30% 10%	50% 30% 10%	50% 30% 10%	50% 30% 10%	50% 30% 10%	0
pfc	20%	20%	20%	20%	20%	0
RCR	RCR:Room Cavity Ratio					Ceiling Cavity Exitance Coefficients(CCEC)
0.0	.528 .528 .528	.451 .451 .451	.308 .308 .308	.177 .177 .177	.057 .057 .057	
1.0	.525 .495 .468	.449 .425 .403	.307 .292 .279	.177 .169 .162	.057 .054 .052	
2.0	.519 .474 .436	.445 .408 .377	.305 .282 .263	.176 .164 .154	.056 .053 .050	
3.0	.512 .458 .416	.439 .395 .360	.301 .275 .253	.174 .160 .149	.056 .052 .049	
4.0	.505 .447 .402	.433 .386 .350	.298 .269 .246	.172 .158 .146	.055 .051 .048	
5.0	.497 .437 .393	.427 .379 .342	.294 .264 .242	.170 .155 .143	.055 .051 .047	
6.0	.490 .430 .387	.421 .372 .337	.291 .261 .238	.169 .153 .142	.054 .050 .047	
7.0	.484 .424 .382	.416 .367 .333	.287 .258 .236	.167 .152 .140	.054 .050 .046	
8.0	.477 .419 .378	.411 .363 .330	.284 .255 .234	.165 .150 .139	.053 .049 .046	
9.0	.471 .414 .376	.406 .359 .328	.281 .253 .233	.164 .149 .139	.053 .049 .046	
10.0	.466 .410 .373	.401 .356 .326	.278 .251 .231	.162 .148 .138	.053 .049 .046	

C Range: 0 - 360DEG  
C Interval: 30.0DEG  
Test Speed: HIGH  
Temperature:25.3℃  
Operators:  
Test Date:2025-03-03

γ Range: 0 - 180DEG  
γ Interval: 1.0DEG  
Test System:EVERFINE GO-2000B\_V1 SYSTEM V2.00.488  
Humidity:65.0%  
Test Distance:6.360m [K=1.0000]  
Remarks:

UGR(Unified Glare Rating) Table

Test:U:24.00V I:0.7046A P:16.91W PF:1.000 Freq:0Hz Lamp Flux:340.758x1 lm										
NAME: SF24-24V-2835-288-U2-P					TYPE:			WEIGHT:		
SPEC.:					DIM.: Length=1m			SERIAL No.:		
MFR.: OLympia lighting					SUR.:			Shielding Angle:		
ceiling/cavity	0.7	0.7	0.5	0.5	0.3	0.7	0.7	0.5	0.5	0.3
walls	0.5	0.3	0.5	0.3	0.3	0.5	0.3	0.5	0.3	0.3
working plane	0.2	0.2	0.2	0.2	0.2	0.2	0.2	0.2	0.2	0.2
Room dimensions	Viewed crosswise					Viewed endwise				
x = 2H y = 2H	18.8	19.9	19.6	20.8	21.8	15.7	16.8	16.5	17.6	18.6
3H	22.1	23.1	22.9	23.9	25.0	17.4	18.4	18.2	19.3	20.3
4H	23.9	24.9	24.8	25.7	26.8	18.2	19.2	19.1	20.0	21.1
6H	26.0	26.9	26.9	27.8	28.9	18.9	19.8	19.8	20.7	21.8
8H	27.2	28.0	28.0	28.9	30.0	19.2	20.1	20.1	21.0	22.1
12H	28.5	29.3	29.4	30.2	31.3	19.5	20.3	20.4	21.2	22.4
4H 2H	19.4	20.3	20.2	21.2	22.3	17.2	18.1	18.0	19.0	20.1
3H	22.9	23.7	23.7	24.6	25.7	19.1	20.0	20.0	20.9	22.0
4H	24.9	25.7	25.8	26.6	27.7	20.2	20.9	21.1	21.8	23.0
6H	27.2	27.8	28.1	28.8	30.0	21.1	21.8	22.0	22.7	23.9
8H	28.5	29.1	29.4	30.0	31.2	21.5	22.1	22.4	23.1	24.3
12H	29.9	30.5	30.9	31.4	32.7	21.9	22.5	22.8	23.4	24.6
8H 4H	25.2	25.9	26.2	26.8	28.0	21.7	22.3	22.6	23.2	24.5
6H	27.8	28.4	28.8	29.3	30.6	23.0	23.6	24.0	24.5	25.8
8H	29.3	29.8	30.3	30.8	32.0	23.7	24.2	24.6	25.1	26.4
12H	31.1	31.5	32.0	32.5	33.7	24.3	24.7	25.3	25.7	27.0
12H 4H	25.2	25.8	26.2	26.8	28.0	22.3	22.8	23.2	23.8	25.0
6H	28.0	28.4	28.9	29.4	30.6	23.9	24.3	24.8	25.3	26.6
8H	29.6	30.0	30.6	31.0	32.2	24.7	25.1	25.7	26.1	27.4
Variations with the observer position at spacings(CIE Pub.117):										
S = 1.0H	+ 0.1 / - 0.1					+ 0.1 / - 0.1				
1.5H	+ 0.2 / - 0.3					+ 0.2 / - 0.3				
2.0H	+ 0.3 / - 0.4					+ 0.3 / - 0.4				

CIE Pub.117, 340.8 lm Total Lamp Luminous Flux Correct (8log(F/F0) = -3.7)  
Area: 0.024 m2

C Range: 0 - 360DEG  
C Interval: 30.0DEG  
Test Speed: HIGH  
Temperature:25.3℃  
Operators:  
Test Date:2025-03-03

γ Range: 0 - 180DEG  
γ Interval: 1.0DEG  
Test System:EVERFINE GO-2000B\_V1 SYSTEM V2.00.488  
Humidity:65.0%  
Test Distance:6.360m [K=1.0000]  
Remarks:

## UTILIZATION FACTORS TABLE

Test:U:24.00V I:0.7046A P:16.91W PF:1.000 Freq:0Hz Lamp Flux:340.758x1 lm		
NAME: SF24-24V-2835-288-U2-P	TYPE:	WEIGHT:
SPEC.:	DIM.: Length=1m	SERIAL No.:
MFR.: OLympia lighting	SUR.:	Shielding Angle:

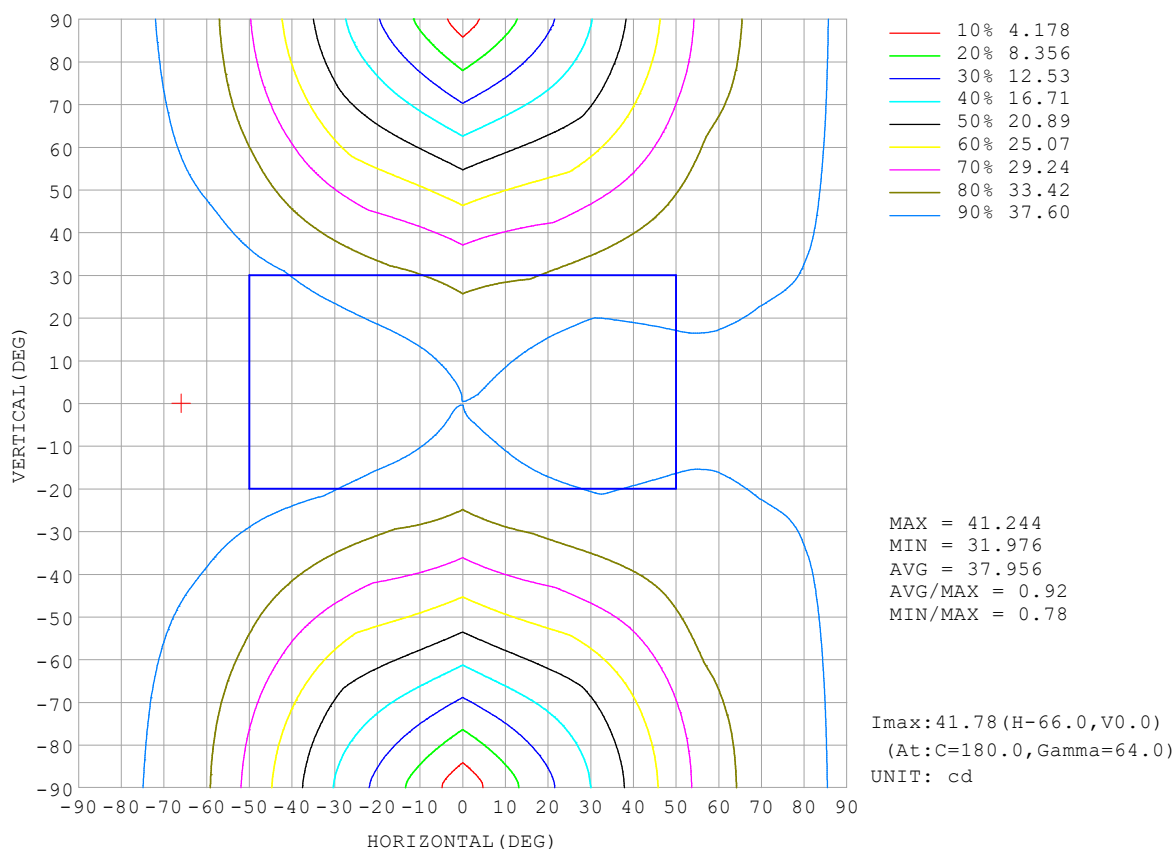
REFLECTANCE										
Ceiling	0.8	0.8	0.8	0.7	0.7	0.7	0.5	0.5	0.5	0
Walls	0.7	0.5	0.3	0.7	0.5	0.3	0.7	0.5	0.3	0
Working plane	0.2	0.2	0.2	0.2	0.2	0.2	0.2	0.2	0.2	0
ROOM INDEX	UTILIZATION FACTORS (PERCENT) $k(RI) \times RCR = 5$									
$k = 0.60$	40	27	20	38	26	20	34	24	19	11
0.80	48	35	27	46	34	26	41	31	24	15
1.00	56	42	34	53	40	32	47	38	30	19
1.25	63	49	40	59	47	39	52	42	35	22
1.50	68	55	46	63	52	44	55	46	39	25
2.00	75	63	54	70	60	52	61	53	46	29
2.50	80	69	61	75	65	57	65	57	51	32
3.00	84	74	66	78	69	62	67	60	55	34
4.00	89	80	73	83	75	69	71	65	60	38
5.00	92	85	78	86	79	73	74	68	64	40
ROOM INDEX	UF (total)									Direct
According to DIN EN 13032-2 2004			Suspended					SHRNOM = 1.25		

C Range: 0 - 360DEG  
 C Interval: 30.0DEG  
 Test Speed: HIGH  
 Temperature: 25.3°C  
 Operators:  
 Test Date: 2025-03-03

γ Range: 0 - 180DEG  
 γ Interval: 1.0DEG  
 Test System: EVERFINE GO-2000B\_V1 SYSTEM V2.00.488  
 Humidity: 65.0%  
 Test Distance: 6.360m [K=1.0000]  
 Remarks:

## ISOCANDELA DIAGRAM

Test:U:24.00V I:0.7046A P:16.91W PF:1.000 Freq:0Hz Lamp Flux:340.758x1 lm		
NAME: SF24-24V-2835-288-U2-P	TYPE:	WEIGHT:
SPEC.:	DIM.: Length=1m	SERIAL No.:
MFR.: OLympia lighting	SUR.:	Shielding Angle:



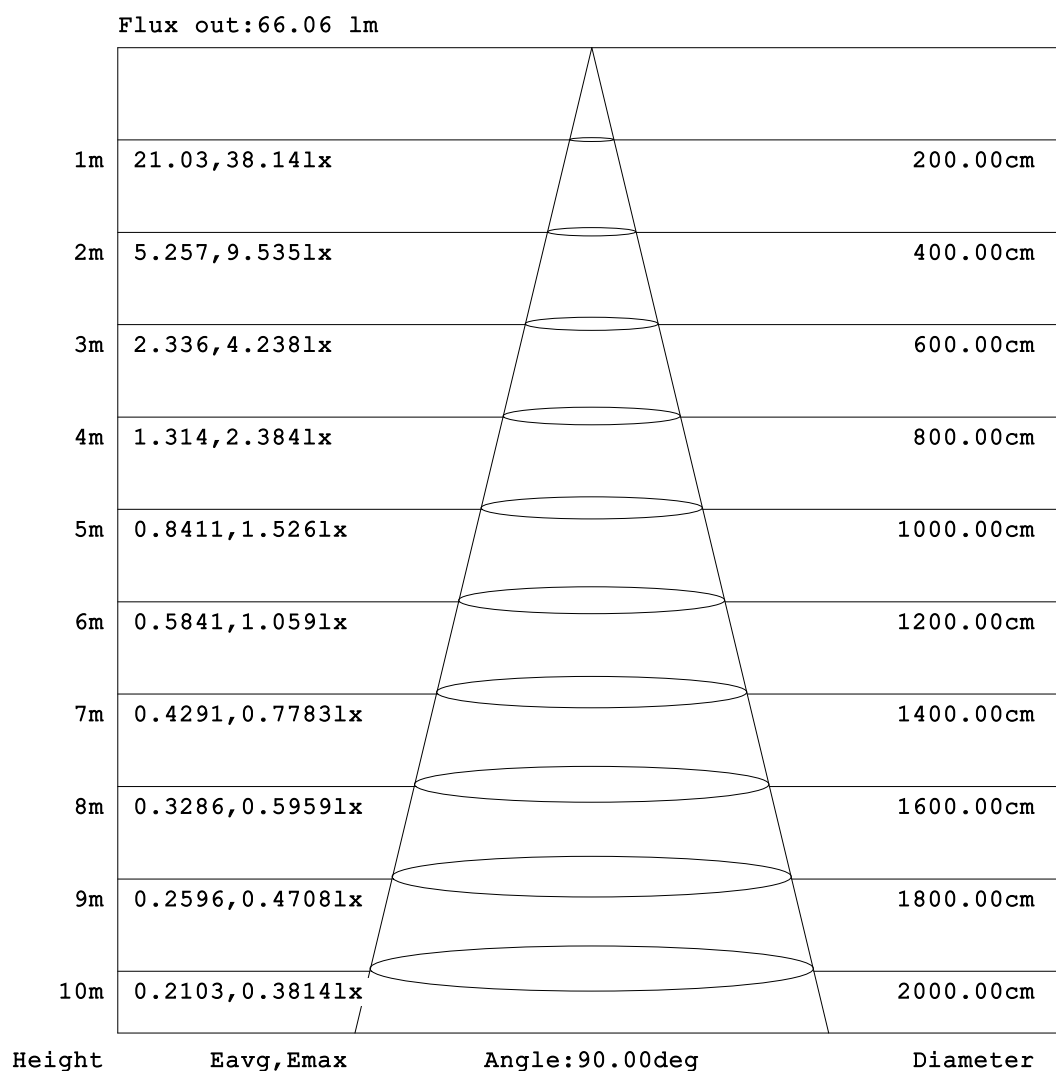
C Range: 0 - 360DEG  
C Interval: 30.0DEG  
Test Speed: HIGH  
Temperature:25.3℃  
Operators:  
Test Date:2025-03-03

γ Range: 0 - 180DEG  
γ Interval: 1.0DEG  
Test System:EVERFINE GO-2000B\_V1 SYSTEM V2.00.488  
Humidity:65.0%  
Test Distance:6.360m [K=1.0000]  
Remarks:



## AAI Figure

Test:U:24.00V I:0.7046A P:16.91W PF:1.000 Freq:0Hz Lamp Flux:340.758x1 lm		
NAME: SF24-24V-2835-288-U2-P	TYPE:	WEIGHT:
SPEC.:	DIM.: Length=1m	SERIAL No.:
MFR.: OLympia lighting	SUR.:	Shielding Angle:



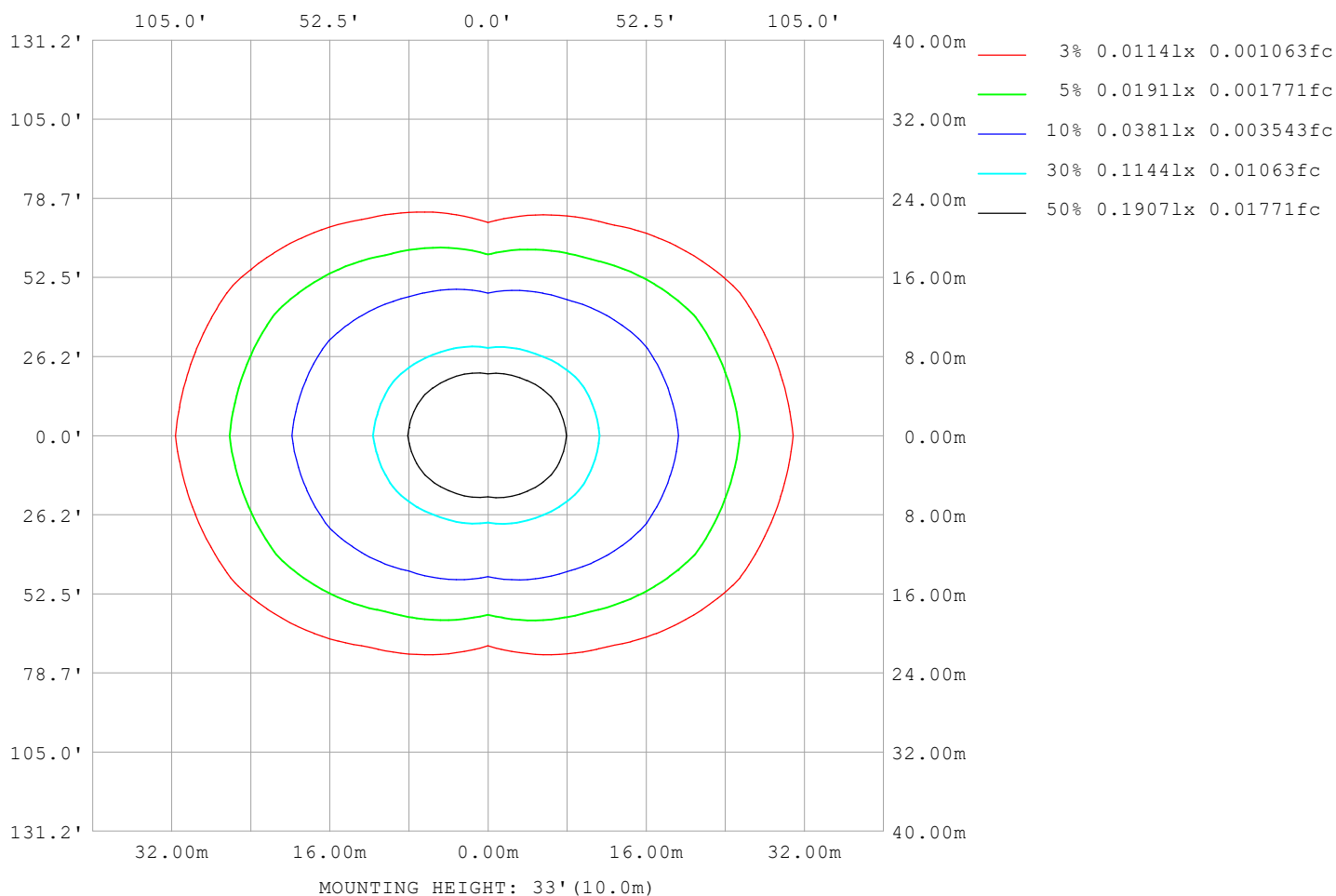
Note:The Curves indicate the illuminated area and the average illumination when the luminaire is at different distance.

C Range: 0 - 360DEG  
C Interval: 30.0DEG  
Test Speed: HIGH  
Temperature:25.3℃  
Operators:  
Test Date:2025-03-03

γ Range: 0 - 180DEG  
γ Interval: 1.0DEG  
Test System:EVERFINE GO-2000B\_V1 SYSTEM V2.00.488  
Humidity:65.0%  
Test Distance:6.360m [K=1.0000]  
Remarks:

## ISOLUX DIAGRAM

Test:U:24.00V I:0.7046A P:16.91W PF:1.000 Freq:0Hz Lamp Flux:340.758x1 lm		
NAME: SF24-24V-2835-288-U2-P	TYPE:	WEIGHT:
SPEC.:	DIM.: Length=1m	SERIAL No.:
MFR.: OLympia lighting	SUR.:	Shielding Angle:



C Range: 0 - 360DEG  
C Interval: 30.0DEG  
Test Speed: HIGH  
Temperature:25.3℃  
Operators:  
Test Date:2025-03-03

γ Range: 0 - 180DEG  
γ Interval: 1.0DEG  
Test System:EVERFINE GO-2000B\_V1 SYSTEM V2.00.488  
Humidity:65.0%  
Test Distance:6.360m [K=1.0000]  
Remarks:

## LED Avg.L Report

Test:U:24.00V I:0.7046A P:16.91W PF:1.000 Freq:0Hz Lamp Flux:340.758x1 lm		
NAME: SF24-24V-2835-288-U2-P	TYPE:	WEIGHT:
SPEC.:	DIM.: Length=1m	SERIAL No.:
MFR.: OLympia lighting	SUR.:	Shielding Angle:

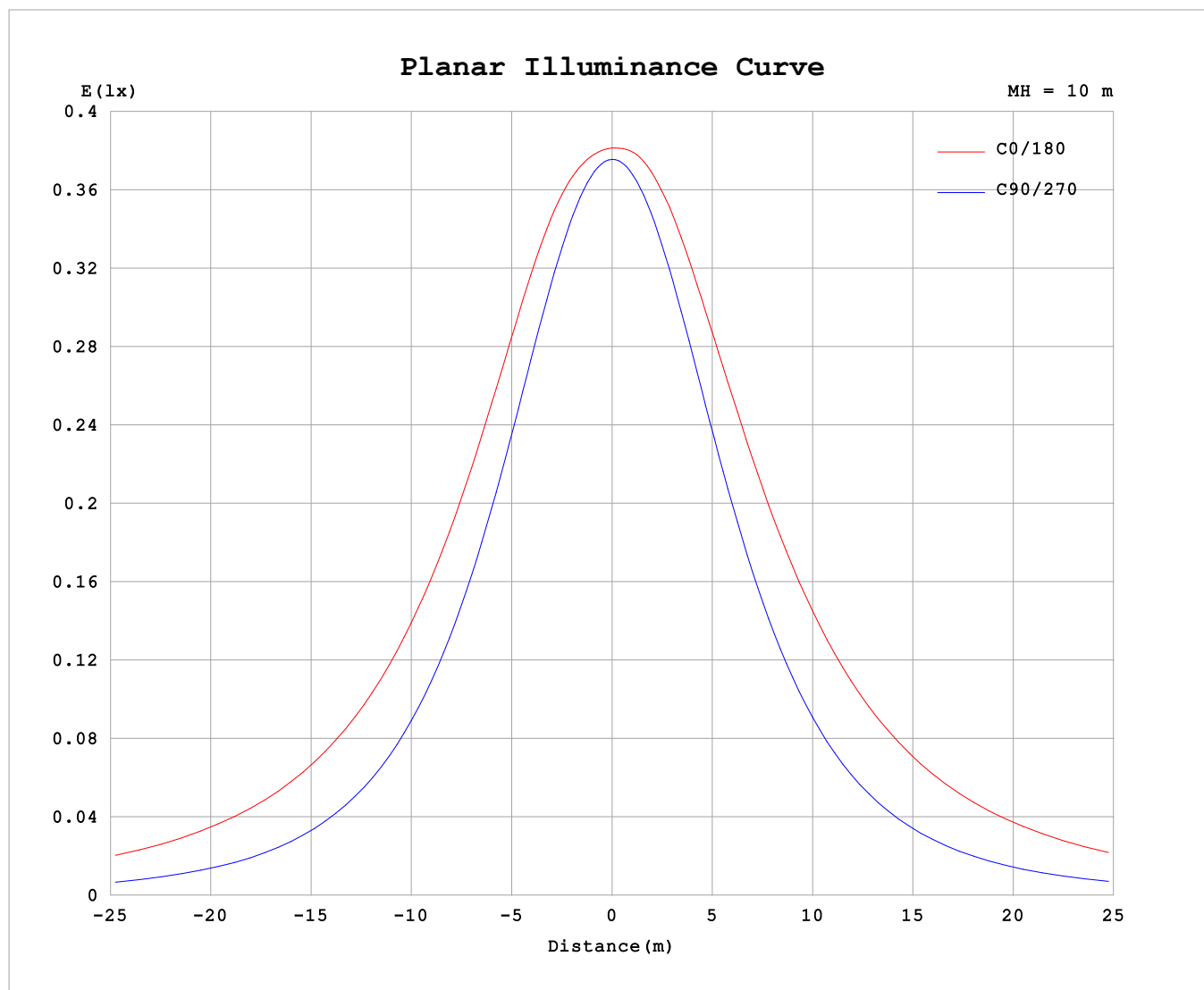
AvgL	cd/m2
L_0~180 (65) av	3941
L_0~180 (75) av	6417
L_0~180 (85) av	18947
L_90~270 (65) av	1491
L_90~270 (75) av	1546
L_90~270 (85) av	1995
L_45 (65) av	2880
L_45 (75) av	4409
L_45 (85) av	12490

Standard: GB/T 29293-2012

C Range: 0 - 360DEG  
C Interval: 30.0DEG  
Test Speed: HIGH  
Temperature:25.3℃  
Operators:  
Test Date:2025-03-03

γ Range: 0 - 180DEG  
γ Interval: 1.0DEG  
Test System:EVERFINE GO-2000B\_V1 SYSTEM V2.00.488  
Humidity:65.0%  
Test Distance:6.360m [K=1.0000]  
Remarks:

## Planar Illuminance Curve



C Range: 0 - 360DEG  
C Interval: 30.0DEG  
Test Speed: HIGH  
Temperature: 25.3 °C  
Operators:  
Test Date: 2025-03-03

$\gamma$  Range: 0 - 180DEG  
 $\gamma$  Interval: 1.0DEG  
Test System: EVERFINE GO-2000B\_V1 SYSTEM V2.00.488  
Humidity: 65.0%  
Test Distance: 6.360m [K=1.0000]  
Remarks:

## LUMINOUS DISTRIBUTION INTENSITY DATA

Test:U:24.00V I:0.7046A P:16.91W PF:1.000 Freq:0Hz Lamp Flux:340.758x1 lm																	
NAME: SF24-24V-2835-288-U2-P									TYPE:						WEIGHT:		
SPEC.:									DIM.: Length=1m						SERIAL No.:		
MFR.: OLYMPIA lighting									SUR.:						Shielding Angle:		

Table--1

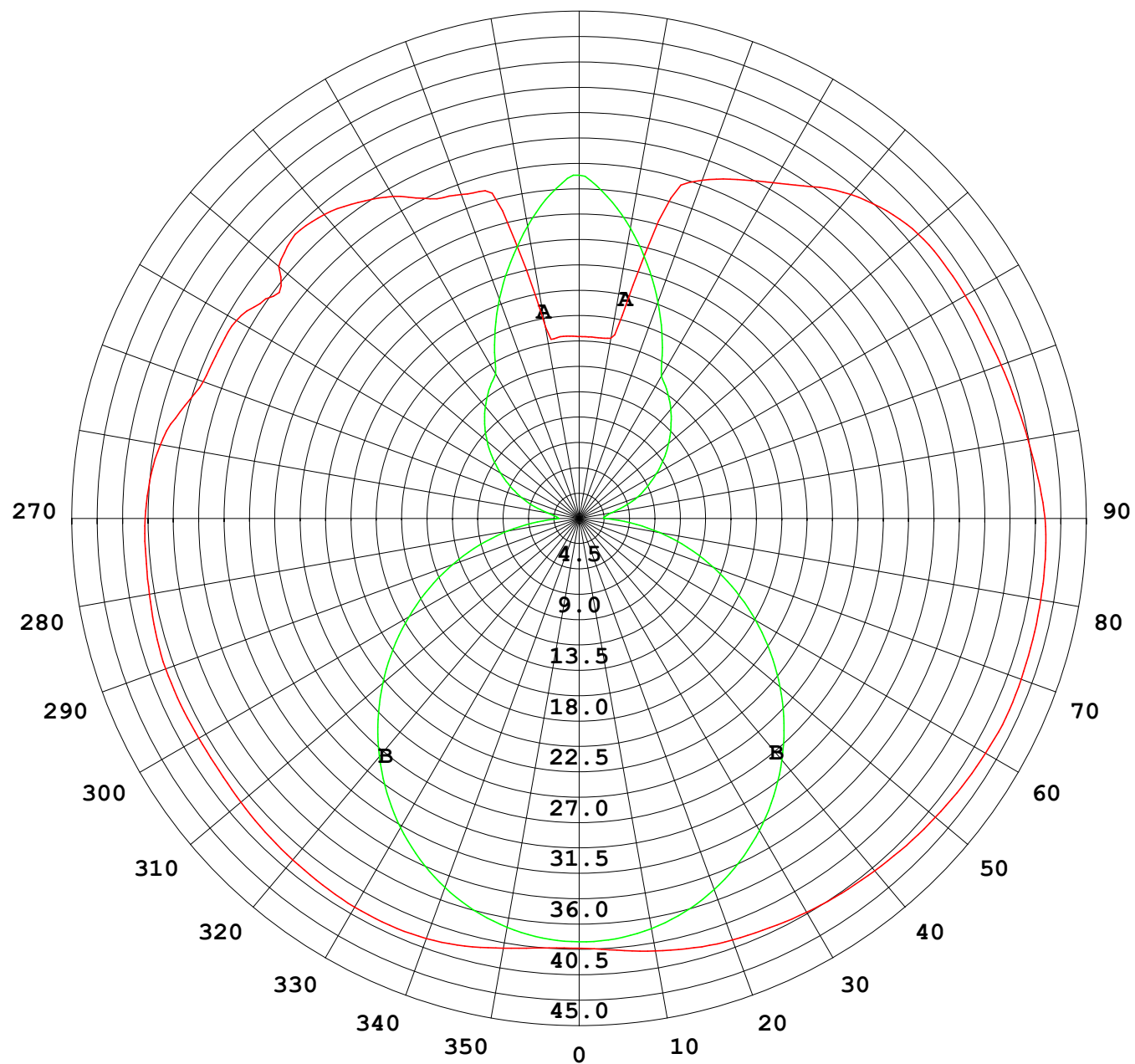
UNIT: cd

C (DEG) γ (DEG)	0	30	60	90	120	150	180	210	240	270	300	330						
0	37.7	37.7	37.7	37.7	37.7	37.7	37.7	37.7	37.7	37.7	37.7	37.7						
5	37.9	37.8	37.6	37.5	37.7	37.9	38.0	37.9	37.7	37.6	37.6	37.8						
10	38.3	38.0	37.4	37.0	37.5	38.3	38.6	38.3	37.6	37.1	37.4	38.0						
15	38.9	38.3	36.9	36.2	37.1	38.5	39.0	38.5	37.4	36.3	36.9	38.2						
20	39.2	38.5	36.3	35.0	36.5	38.5	39.4	38.7	36.8	35.2	36.2	38.4						
25	39.4	38.5	35.5	33.6	35.6	38.4	39.6	38.6	36.0	33.8	35.4	38.4						
30	39.4	38.2	34.5	31.8	34.4	38.2	39.9	38.5	35.0	32.1	34.3	38.2						
35	39.3	37.7	33.2	29.9	33.1	38.0	40.2	38.3	33.7	30.2	33.0	37.8						
40	39.1	37.2	31.7	27.7	31.5	37.6	40.4	38.0	32.3	28.1	31.5	37.4						
45	39.0	36.5	30.0	25.4	29.9	37.3	40.6	37.7	30.7	25.8	29.9	36.8						
50	38.8	35.8	28.2	22.9	28.1	36.8	40.8	37.4	29.1	23.4	28.2	36.2						
55	38.6	35.1	26.3	20.2	26.2	36.4	41.0	37.1	27.3	20.8	26.4	35.6						
60	38.6	34.4	24.3	17.5	24.3	36.0	41.2	36.8	25.6	18.2	24.5	35.0						
65	38.6	34.0	22.4	14.8	22.5	35.7	41.3	36.5	23.9	15.5	22.7	34.5						
70	38.6	33.6	20.6	12.0	20.9	35.4	41.3	36.2	22.4	12.7	21.0	34.0						
75	38.5	33.2	19.2	9.20	19.5	34.9	41.2	35.8	21.1	10.00	19.5	33.6						
80	38.3	32.8	18.1	6.45	18.3	34.5	41.2	35.4	19.9	7.28	18.4	33.1						
85	38.2	32.5	17.2	3.75	17.3	34.2	41.1	35.2	18.8	4.59	17.4	32.6						
90	38.1	32.4	16.7	1.81	16.6	34.1	40.9	34.9	18.1	2.31	16.6	32.4						
95	37.8	32.3	16.2	2.08	16.5	33.8	40.4	34.6	18.0	2.35	16.0	32.2						
100	37.3	31.5	13.6	2.83	16.9	33.6	40.0	34.4	18.2	2.93	13.6	31.5						
105	36.2	29.5	12.9	4.12	17.6	33.4	39.7	34.2	18.8	4.11	13.0	30.0						
110	35.1	28.5	12.8	5.47	18.8	33.4	39.4	34.1	19.7	5.50	12.9	28.8						
115	34.9	27.7	14.5	6.77	20.2	33.6	39.2	34.2	21.0	6.69	14.9	28.0						
120	34.8	27.2	16.1	8.10	21.3	34.0	39.1	34.4	22.3	7.93	16.1	28.6						
125	33.6	30.0	16.0	9.43	22.2	34.4	39.1	34.7	23.0	9.20	16.3	30.0						
130	34.4	30.3	16.1	10.7	23.3	34.5	38.9	34.8	23.7	10.4	17.0	29.2						
135	35.3	27.5	16.0	11.9	24.2	34.3	38.2	34.7	24.7	11.6	16.6	26.6						
140	34.8	23.9	15.6	13.0	25.1	33.7	37.1	33.7	25.6	12.7	16.4	25.3						
145	33.9	20.5	15.1	14.0	26.0	32.8	35.6	32.9	26.4	13.7	16.3	23.0						
150	32.6	18.7	15.3	14.9	27.0	32.1	34.0	32.2	27.2	14.7	16.0	20.3						
155	31.0	17.4	16.1	17.8	27.6	31.6	32.8	31.7	27.7	17.6	16.4	18.5						
160	30.3	16.2	19.4	20.8	28.1	31.3	31.6	31.2	28.1	20.5	19.4	17.3						
165	29.6	16.1	22.5	23.6	28.8	31.0	27.1	30.8	28.7	23.5	22.3	16.7						
170	17.0	19.4	25.4	26.5	29.1	30.9	16.1	30.6	29.0	26.3	25.3	19.9						
175	16.1	24.0	28.2	29.0	29.8	30.7	16.0	30.4	29.6	28.8	28.1	24.3						
180	16.0	28.6	30.4	30.6	30.6	28.6	16.0	28.6	30.5	30.6	30.6	28.6						

C Range: 0 - 360DEG  
C Interval: 30.0DEG  
Test Speed: HIGH  
Temperature:25.3℃  
Operators:  
Test Date:2025-03-03

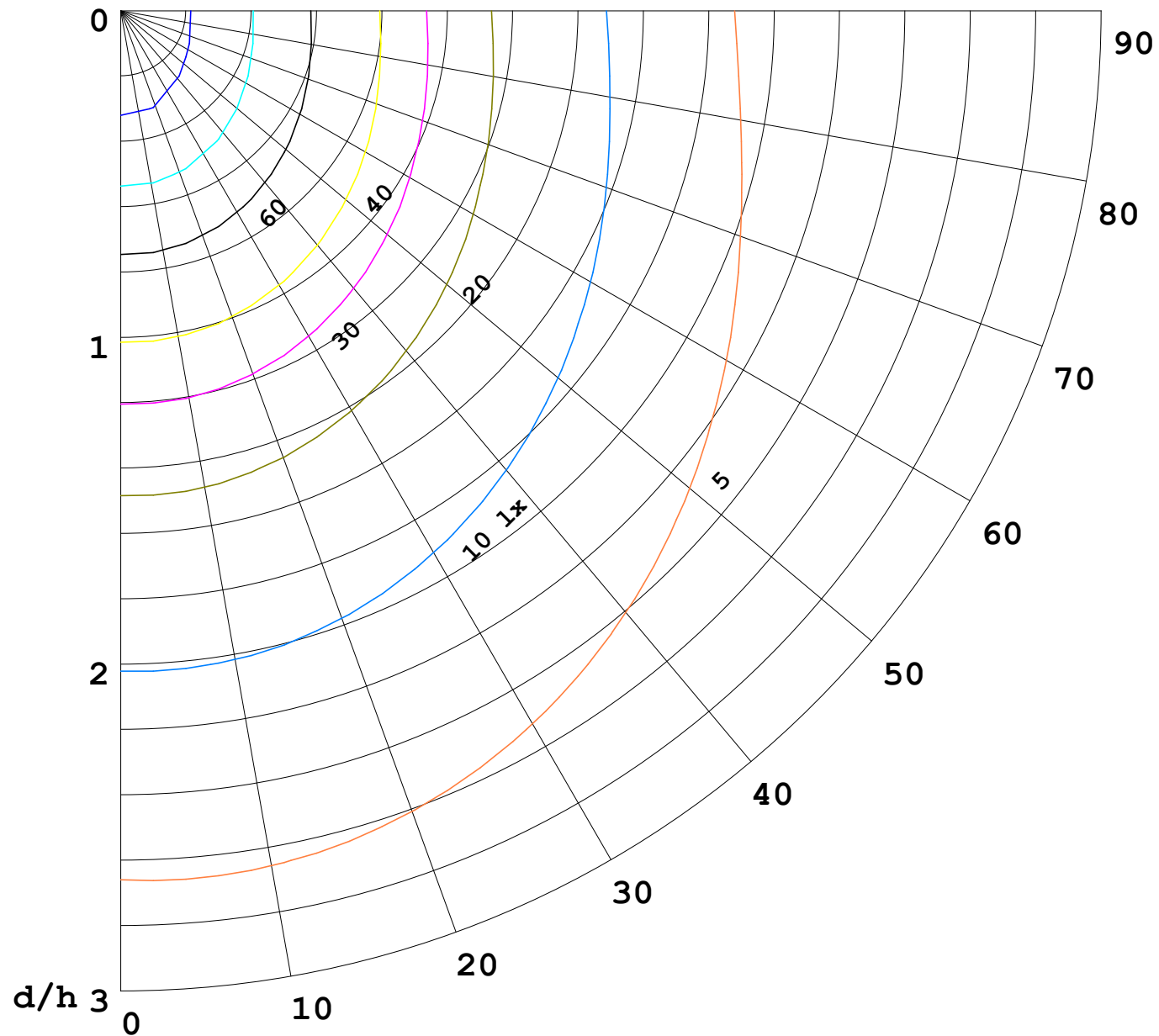
γ Range: 0 - 180DEG  
γ Interval: 1.0DEG  
Test System:EVERFINE GO-2000B\_V1 SYSTEM V2.00.488  
Humidity:65.0%  
Test Distance:6.360m [K=1.0000]  
Remarks:

I (cd)



1000 lm

$\kappa = 1$



F = 1000 lm  
 K = 0.7  
 Hcc = 0.8 m  
 Hfc = 0.0 m  
 Eave = 100 lx

	Pcc	Pw	Pfc
—	70	50	30
—	50	30	20

