

LUMINAIRE PHOTOMETRIC TEST REPORT

Test:U:24.00V I:0.6853A P:16.45W PF:1.000 Freq:0Hz

Lamp Flux:500.327x1 lm

NAME: SF24-24V-2835-288-U2-G

TYPE:

WEIGHT:

SPEC.:

DIM.: Length=1m

SERIAL No.:

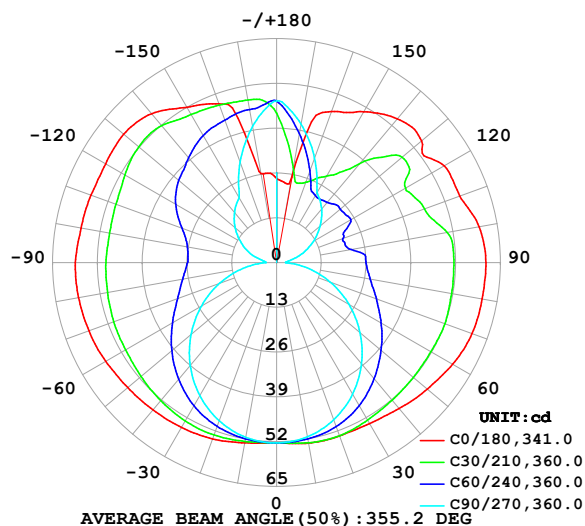
MFR.: Olym pia lighting

SUR.:

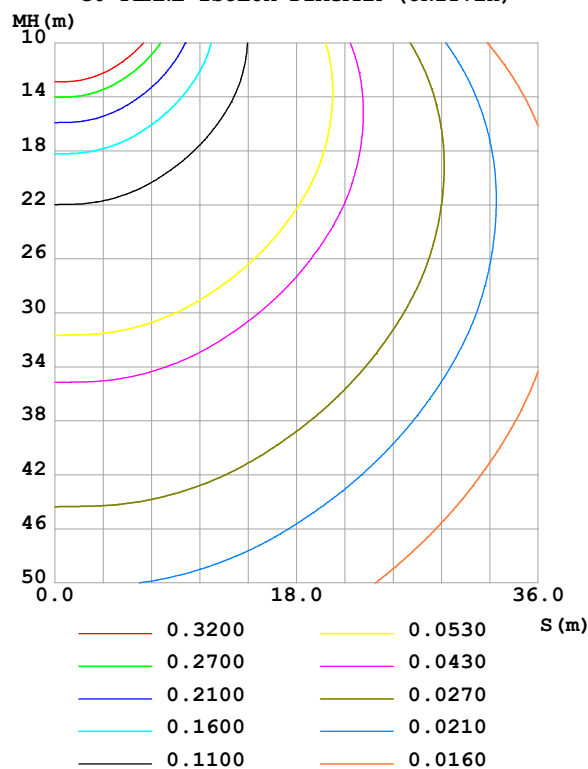
Shielding Angle:

DATA OF LAMP		PHOTOMETRIC DATA				Eff: 30.42 lm/W
MODEL	2835	I _{max} (cd)	60.75	S/MH(C0/180)	1.63	
NOMINAL POWER(W)	16	LOR(%)	100.0	S/MH(C90/270)	1.27	
RATED VOLTAGE(V)	24	TOTAL FLUX(lm)	500.33	η UP,DN(C0-180)	22.8,26.9	
NOMINAL FLUX(lm)	500.327	CIE CLASS	DIFFUSE	η UP,DN(C180-360)	23.1,27.2	
LAMPS INSIDE	1	η up (%)	45.9	CIBSE SHR NOM	1.75	
TEST VOLTAGE(V)		η down (%)	54.1	CIBSE SHR MAX	1.75	

LUMINOUS INTENSITY DISTRIBUTION DIAGRAM



C0 PLANE ISOLUX DIAGRAM (UNIT:lx)



C Range: 0 - 360DEG
C Interval: 30.0DEG
Test Speed: HIGH
Temperature:25.3℃
Operators:
Test Date:2025-03-03

γ Range: 0 - 180DEG
γ Interval: 1.0DEG
Test System:EVERFINE GO-2000B_V1 SYSTEM V2.00.488
Humidity:65.0%
Test Distance:6.360m [K=1.0000]
Remarks:

ZONAL FLUX DIAGRAM

ZONAL FLUX DIAGRAM:

γ	C0	C45	C90	C135	C180	C225	C270	C315	γ	Φ zone	Φ total	%lum, lamp
10	53.21	52.55	51.36	52.21	53.15	52.34	51.51	52.61	0- 10	5.001	5.001	1.00,1.00
20	53.53	52.07	48.54	51.51	54.46	51.92	48.85	52.38	10- 20	14.78	19.78	3.95,3.95
30	53.96	50.39	44.14	49.89	55.27	50.55	44.60	51.12	20- 30	23.60	43.38	8.67,8.67
40	55.29	48.12	38.37	47.43	55.84	48.29	39.05	49.16	30- 40	30.80	74.18	14.8,14.8
50	57.12	45.77	31.63	44.50	56.46	45.60	32.44	46.58	40- 50	36.06	110.2	22,22
60	59.03	43.43	24.25	41.48	57.30	42.81	25.19	43.87	50- 60	39.31	149.6	29.9,29.9
70	60.37	41.45	16.57	38.96	58.00	40.49	17.63	41.28	60- 70	40.81	190.4	38,38
80	60.59	39.65	8.960	37.15	58.37	38.82	9.973	39.05	70- 80	40.77	231.1	46.2,46.2
90	60.74	38.77	2.637	36.11	58.41	37.78	3.213	37.73	80- 90	39.66	270.8	54.1,54.1
100	59.69	36.22	4.078	36.23	57.67	37.82	4.416	35.35	90-100	38.53	309.3	61.8,61.8
110	56.61	33.16	8.140	38.04	57.33	39.47	8.447	32.93	100-110	36.71	346.0	69.2,69.2
120	56.20	34.13	12.35	41.19	57.36	42.38	12.08	34.95	110-120	35.56	381.6	76.3,76.3
130	55.00	35.90	16.53	43.42	57.95	44.74	15.76	34.88	120-130	33.96	415.6	83.1,83.1
140	54.48	30.21	20.37	44.81	56.48	45.86	19.05	31.91	130-140	29.88	445.5	89,89
150	50.59	25.79	23.55	45.30	52.09	46.16	21.81	26.90	140-150	23.34	468.8	93.7,93.7
160	46.69	26.58	32.31	45.98	49.02	46.35	31.12	27.03	150-160	17.00	485.8	97.1,97.1
170	25.14	33.02	40.84	46.43	26.22	46.55	40.19	33.91	160-170	10.78	496.6	99.3,99.3
180	24.34	45.14	47.03	45.47	24.47	45.19	46.88	45.45	170-180	3.750	500.3	100,100
DEG	LUMINOUS INTENSITY:cd									UNIT:lm		

Conical surface Flux(90deg): 91.683 lm

%lum = 18.3%

%lamp = 18.3%

Conical surface Flux(130deg): 169.88 lm

%lum = 34.0%

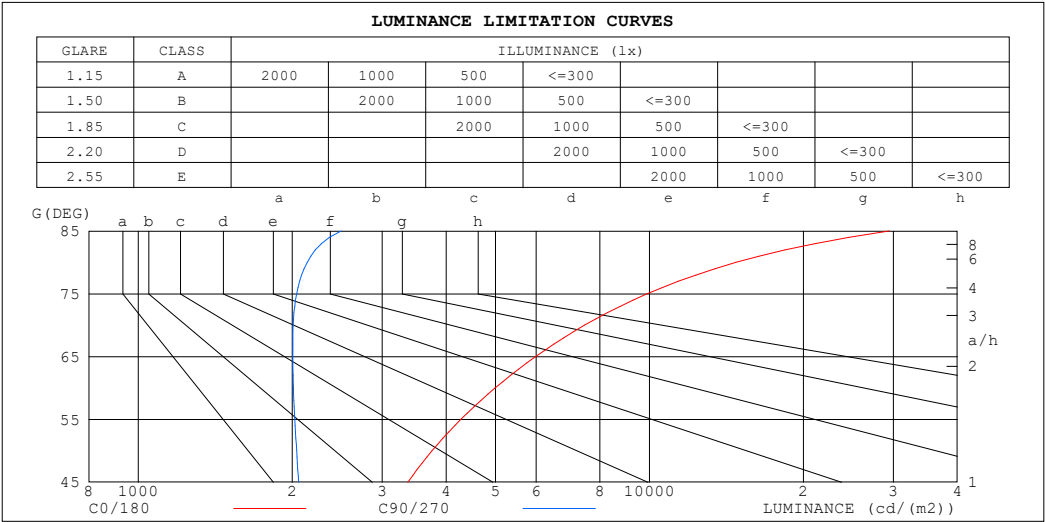
%lamp = 34.0%

C Range: 0 - 360DEG
 C Interval: 30.0DEG
 Test Speed: HIGH
 Temperature:25.3℃
 Operators:
 Test Date:2025-03-03

γ Range: 0 - 180DEG
 γ Interval: 1.0DEG
 Test System:EVERFINE GO-2000B_V1 SYSTEM V2.00.488
 Humidity:65.0%
 Test Distance:6.360m [K=1.0000]
 Remarks:

LUMINANCE LIMITATION CURVES

Test:U:24.00V I:0.6853A P:16.45W PF:1.000 Freq:0Hz Lamp Flux:500.327x1 lm		
NAME: SF24-24V-2835-288-U2-G	TYPE:	WEIGHT:
SPEC.:	DIM.: Length=1m	SERIAL No.:
MFR.: OLympia lighting	SUR.:	Shielding Angle:



LUMINANCE cd/(m2)		
G (DEG)	C0/180	C90/270
85	29438	2495
80	14755	2139
75	9899	2042
70	7464	2009
65	5989	2006
60	4992	2011
55	4278	2023
50	3758	2040
45	3366	2058

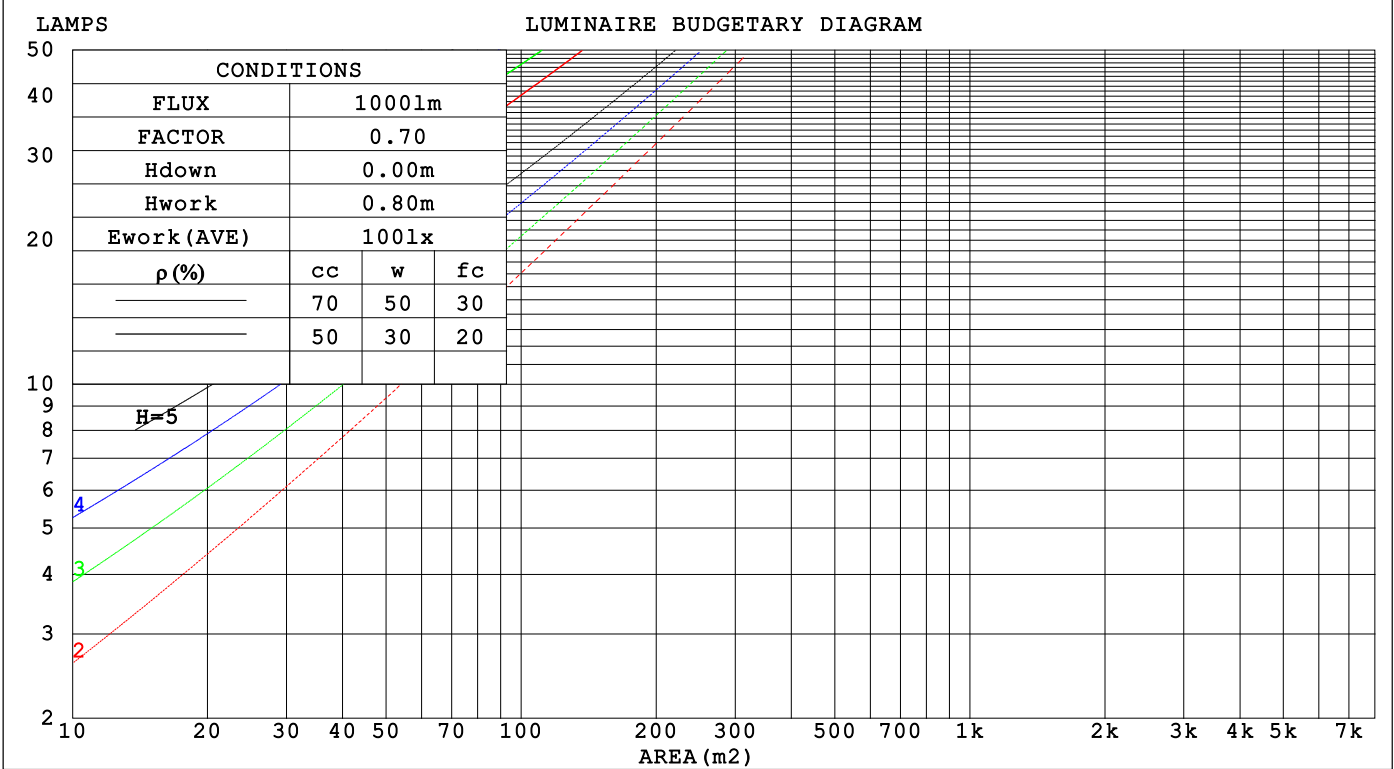
C Range: 0 - 360DEG
C Interval: 30.0DEG
Test Speed: HIGH
Temperature:25.3℃
Operators:
Test Date:2025-03-03

γ Range: 0 - 180DEG
γ Interval: 1.0DEG
Test System:EVERFINE GO-2000B_V1 SYSTEM V2.00.488
Humidity:65.0%
Test Distance:6.360m [K=1.0000]
Remarks:

CU AND LUMINAIRE BUDGETARY ESTIMATE DIAGRAM

Test:U:24.00V I:0.6853A P:16.45W PF:1.000 Freq:0Hz		
Lamp Flux:500.327x1 lm		
NAME: SF24-24V-2835-288-U2-G	TYPE:	WEIGHT:
SPEC.:	DIM.: Length=1m	SERIAL No.:
MFR.: OLYMPIA lighting	SUR.:	Shielding Angle:

pcc	80%			70%			50%			30%			10%			0
pw	50%	30%	10%	50%	30%	10%	50%	30%	10%	50%	30%	10%	50%	30%	10%	0
pfc	20%			20%			20%			20%			20%			0
RCR	RCR:Room Cavity Ratio			Coefficients of Utilization(CU)												
0.0	1.08	1.08	1.08	1.00	1.00	1.00	.86	.86	.86	.72	.72	.72	.60	.60	.60	.54
1.0	.89	.84	.79	.82	.77	.73	.69	.66	.63	.58	.55	.53	.47	.45	.43	.38
2.0	.76	.68	.62	.70	.63	.57	.59	.54	.49	.49	.45	.41	.39	.36	.34	.29
3.0	.65	.57	.50	.60	.53	.46	.51	.45	.40	.42	.37	.33	.34	.30	.27	.23
4.0	.57	.48	.41	.53	.45	.38	.45	.38	.33	.37	.32	.28	.30	.26	.23	.19
5.0	.51	.41	.35	.47	.39	.32	.39	.33	.28	.33	.27	.23	.26	.22	.19	.16
6.0	.45	.36	.30	.42	.34	.28	.35	.29	.24	.29	.24	.20	.24	.20	.16	.13
7.0	.41	.32	.26	.38	.30	.24	.32	.25	.21	.26	.21	.18	.21	.17	.14	.12
8.0	.37	.28	.22	.34	.26	.21	.29	.23	.18	.24	.19	.15	.20	.16	.13	.10
9.0	.33	.25	.20	.31	.24	.19	.26	.20	.16	.22	.17	.14	.18	.14	.11	.09
10.0	.30	.23	.18	.28	.21	.17	.24	.18	.14	.20	.16	.12	.17	.13	.10	.08



C Range: 0 - 360DEG
C Interval: 30.0DEG
Test Speed: HIGH
Temperature:25.3℃
Operators:
Test Date:2025-03-03

γ Range: 0 - 180DEG
γ Interval: 1.0DEG
Test System:EVERFINE GO-2000B_V1 SYSTEM V2.00.488
Humidity:65.0%
Test Distance:6.360m [K=1.0000]
Remarks:

WEC AND CCEC

Test:U:24.00V I:0.6853A P:16.45W PF:1.000 Freq:0Hz Lamp Flux:500.327x1 lm		
NAME: SF24-24V-2835-288-U2-G	TYPE:	WEIGHT:
SPEC.:	DIM.: Length=1m	SERIAL No.:
MFR.: OLympia lighting	SUR.:	Shielding Angle:

pcc	80%			70%			50%			30%			10%			0														
pw	50%	30%	10%	50%	30%	10%	50%	30%	10%	50%	30%	10%	50%	30%	10%	0														
pfc	20%			20%			20%			20%			20%			0														
RCR	RCR:Room Cavity Ratio															Wall Exitance Coefficients(WEC)														
0.0																														
1.0	.385	.219	.069	.364	.207	.066	.324	.186	.059	.288	.166	.053	.254	.147	.047															
2.0	.327	.179	.055	.307	.169	.052	.271	.151	.047	.238	.134	.042	.207	.117	.037															
3.0	.288	.153	.046	.270	.145	.044	.237	.129	.039	.207	.113	.035	.178	.099	.031															
4.0	.258	.134	.039	.242	.127	.037	.212	.112	.034	.183	.099	.030	.157	.085	.026															
5.0	.234	.119	.035	.219	.113	.033	.191	.100	.029	.165	.087	.026	.141	.075	.023															
6.0	.214	.107	.031	.200	.101	.029	.175	.090	.026	.151	.078	.023	.128	.068	.020															
7.0	.197	.097	.028	.185	.092	.026	.161	.081	.023	.139	.071	.021	.118	.061	.018															
8.0	.183	.089	.025	.171	.084	.024	.149	.074	.021	.128	.065	.019	.109	.056	.016															
9.0	.170	.082	.023	.159	.078	.022	.139	.069	.019	.120	.060	.017	.101	.051	.015															
10.0	.159	.076	.021	.149	.072	.020	.130	.064	.018	.112	.056	.016	.095	.048	.014															

pcc	80%			70%			50%			30%			10%			0
pw	50%	30%	10%	50%	30%	10%	50%	30%	10%	50%	30%	10%	50%	30%	10%	0
pfc	20%			20%			20%			20%			20%			0
RCR	RCR:Room Cavity Ratio						Ceiling Cavity Exitance Coefficients (CCEC)									
0.0	.540	.540	.540	.462	.462	.462	.315	.315	.315	.181	.181	.181	.058	.058	.058	
1.0	.538	.508	.481	.460	.436	.414	.315	.300	.286	.181	.174	.166	.058	.056	.054	
2.0	.532	.487	.449	.455	.419	.388	.312	.290	.270	.180	.169	.159	.058	.055	.052	
3.0	.525	.471	.428	.450	.406	.371	.309	.282	.261	.178	.165	.154	.057	.054	.050	
4.0	.517	.459	.415	.444	.397	.361	.305	.277	.254	.177	.162	.150	.057	.053	.049	
5.0	.510	.450	.406	.438	.390	.353	.302	.272	.250	.175	.160	.148	.056	.052	.049	
6.0	.503	.443	.400	.432	.384	.348	.298	.268	.246	.173	.158	.146	.056	.052	.048	
7.0	.496	.437	.395	.427	.378	.344	.295	.265	.244	.171	.156	.145	.055	.051	.048	
8.0	.490	.431	.391	.422	.374	.341	.292	.263	.242	.170	.155	.144	.055	.051	.048	
9.0	.484	.427	.388	.417	.371	.339	.289	.260	.241	.168	.154	.143	.055	.050	.048	
10.0	.478	.423	.386	.412	.367	.337	.286	.258	.239	.167	.153	.143	.054	.050	.047	

C Range: 0 - 360DEG
C Interval: 30.0DEG
Test Speed: HIGH
Temperature:25.3℃
Operators:
Test Date:2025-03-03

γ Range: 0 - 180DEG
γ Interval: 1.0DEG
Test System:EVERFINE GO-2000B_V1 SYSTEM V2.00.488
Humidity:65.0%
Test Distance:6.360m [K=1.0000]
Remarks:

UGR(Unified Glare Rating) Table

Test:U:24.00V I:0.6853A P:16.45W PF:1.000 Freq:0Hz Lamp Flux:500.327x1 lm											
NAME: SF24-24V-2835-288-U2-G					TYPE:			WEIGHT:			
SPEC.:					DIM.: Length=1m			SERIAL No.:			
MFR.: OLympia lighting					SUR.:			Shielding Angle:			
ceiling/cavity	0.7	0.7	0.5	0.5	0.3	0.7	0.7	0.5	0.5	0.3	
walls	0.5	0.3	0.5	0.3	0.3	0.5	0.3	0.5	0.3	0.3	
working plane	0.2	0.2	0.2	0.2	0.2	0.2	0.2	0.2	0.2	0.2	
Room dimensions		Viewed crosswise					Viewed endwise				
x = 2H y = 2H	2H	19.0	20.1	19.8	20.9	22.0	15.4	16.5	16.2	17.3	18.4
	3H	22.4	23.4	23.2	24.2	25.4	17.2	18.2	18.0	19.0	20.1
	4H	24.3	25.2	25.2	26.1	27.2	18.0	18.9	18.9	19.8	20.9
	6H	26.4	27.3	27.3	28.2	29.3	18.7	19.6	19.6	20.5	21.7
	8H	27.6	28.5	28.5	29.4	30.5	19.0	19.9	19.9	20.8	22.0
	12H	29.0	29.8	29.9	30.7	31.9	19.3	20.1	20.2	21.0	22.2
4H	2H	19.5	20.4	20.4	21.3	22.4	17.1	18.0	17.9	18.9	20.0
	3H	23.2	24.0	24.1	24.9	26.1	19.1	19.9	20.0	20.8	22.0
	4H	25.3	26.0	26.2	26.9	28.1	20.1	20.9	21.0	21.8	23.0
	6H	27.6	28.3	28.5	29.2	30.4	21.1	21.7	22.0	22.7	23.9
	8H	28.9	29.5	29.9	30.5	31.7	21.5	22.1	22.4	23.1	24.3
	12H	30.4	31.0	31.4	31.9	33.2	21.9	22.4	22.8	23.4	24.6
8H	4H	25.6	26.2	26.5	27.2	28.4	21.8	22.4	22.7	23.4	24.6
	6H	28.3	28.8	29.2	29.8	31.0	23.2	23.7	24.1	24.7	25.9
	8H	29.8	30.3	30.8	31.2	32.5	23.8	24.3	24.8	25.3	26.5
	12H	31.6	32.0	32.5	33.0	34.3	24.4	24.8	25.4	25.8	27.1
12H	4H	25.6	26.2	26.5	27.1	28.4	22.4	23.0	23.4	24.0	25.2
	6H	28.4	28.8	29.3	29.8	31.1	24.1	24.5	25.0	25.5	26.8
	8H	30.0	30.4	31.0	31.4	32.7	24.9	25.3	25.9	26.3	27.6
Variations with the observer position at spacings(CIE Pub.117):											
S = 1.0H		+ 0.1 / - 0.1					+ 0.1 / - 0.1				
1.5H		+ 0.2 / - 0.3					+ 0.2 / - 0.2				
2.0H		+ 0.3 / - 0.4					+ 0.3 / - 0.4				

CIE Pub.117, 500.3 lm Total Lamp Luminous Flux Correct (8log(F/F0) = -2.4)
Area: 0.024 m2

C Range: 0 - 360DEG
C Interval: 30.0DEG
Test Speed: HIGH
Temperature:25.3℃
Operators:
Test Date:2025-03-03

γ Range: 0 - 180DEG
γ Interval: 1.0DEG
Test System:EVERFINE GO-2000B_V1 SYSTEM V2.00.488
Humidity:65.0%
Test Distance:6.360m [K=1.0000]
Remarks:

UTILIZATION FACTORS TABLE

Test:U:24.00V I:0.6853A P:16.45W PF:1.000 Freq:0Hz Lamp Flux:500.327x1 lm		
NAME: SF24-24V-2835-288-U2-G	TYPE:	WEIGHT:
SPEC.:	DIM.: Length=1m	SERIAL No.:
MFR.: OLympia lighting	SUR.:	Shielding Angle:

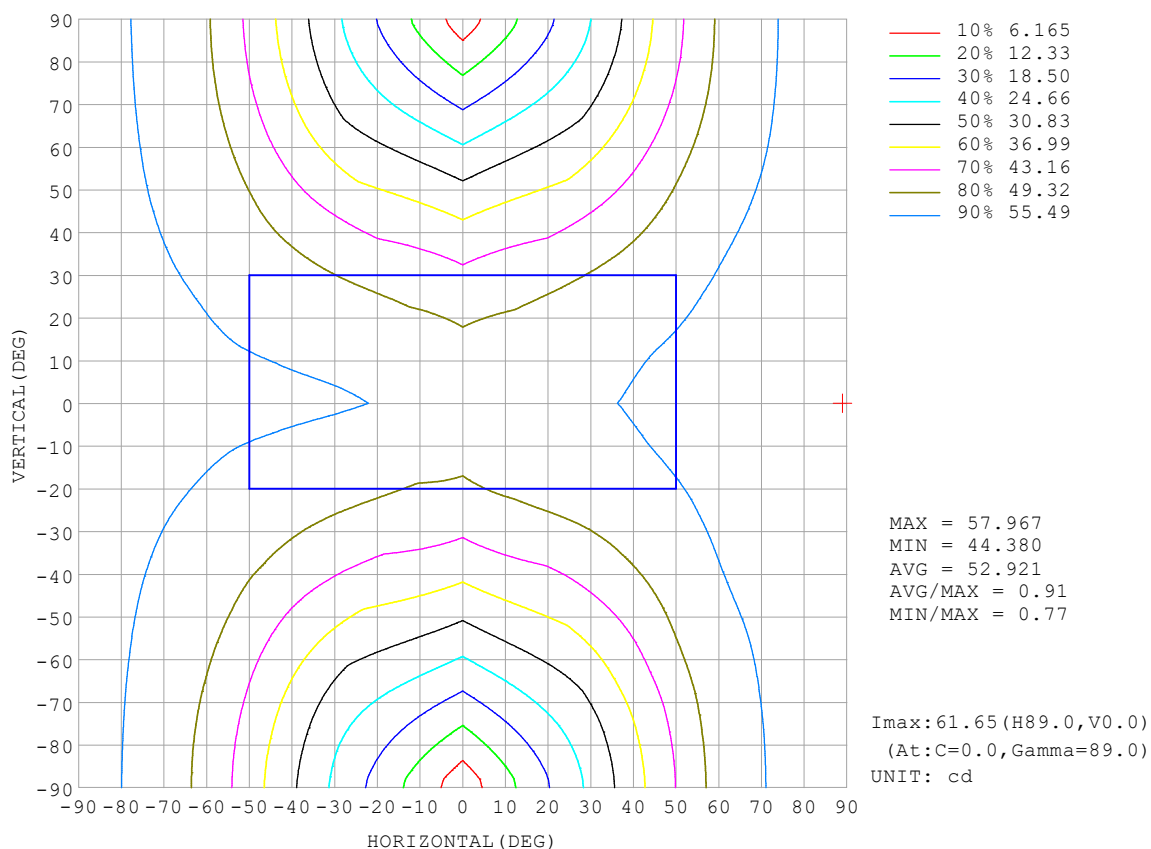
REFLECTANCE										
Ceiling	0.8	0.8	0.8	0.7	0.7	0.7	0.5	0.5	0.5	0
Walls	0.7	0.5	0.3	0.7	0.5	0.3	0.7	0.5	0.3	0
Working plane	0.2	0.2	0.2	0.2	0.2	0.2	0.2	0.2	0.2	0
ROOM INDEX	UTILIZATION FACTORS (PERCENT) $k(RI) \times RCR = 5$									
$k = 0.60$	39	27	20	37	26	19	34	24	18	11
0.80	48	35	27	45	33	26	40	30	24	14
1.00	55	42	33	52	40	32	46	37	29	18
1.25	62	49	40	58	46	38	51	41	34	21
1.50	67	54	45	63	51	43	54	45	38	24
2.00	75	63	54	70	59	51	60	52	45	28
2.50	80	68	60	74	64	56	64	56	50	30
3.00	83	73	65	77	68	61	66	60	54	33
4.00	88	80	72	82	74	68	70	64	59	36
5.00	92	84	78	85	78	73	73	68	63	39
ROOM INDEX	UF (total)									Direct
According to DIN EN 13032-2 2004			Suspended					SHRNOM = 1.25		

C Range: 0 - 360DEG
 C Interval: 30.0DEG
 Test Speed: HIGH
 Temperature: 25.3 °C
 Operators:
 Test Date: 2025-03-03

γ Range: 0 - 180DEG
 γ Interval: 1.0DEG
 Test System: EVERFINE GO-2000B_V1 SYSTEM V2.00.488
 Humidity: 65.0%
 Test Distance: 6.360m [K=1.0000]
 Remarks:

ISOCANDELA DIAGRAM

Test:U:24.00V I:0.6853A P:16.45W PF:1.000 Freq:0Hz Lamp Flux:500.327x1 lm		
NAME: SF24-24V-2835-288-U2-G	TYPE:	WEIGHT:
SPEC.:	DIM.: Length=1m	SERIAL No.:
MFR.: OLympia lighting	SUR.:	Shielding Angle:

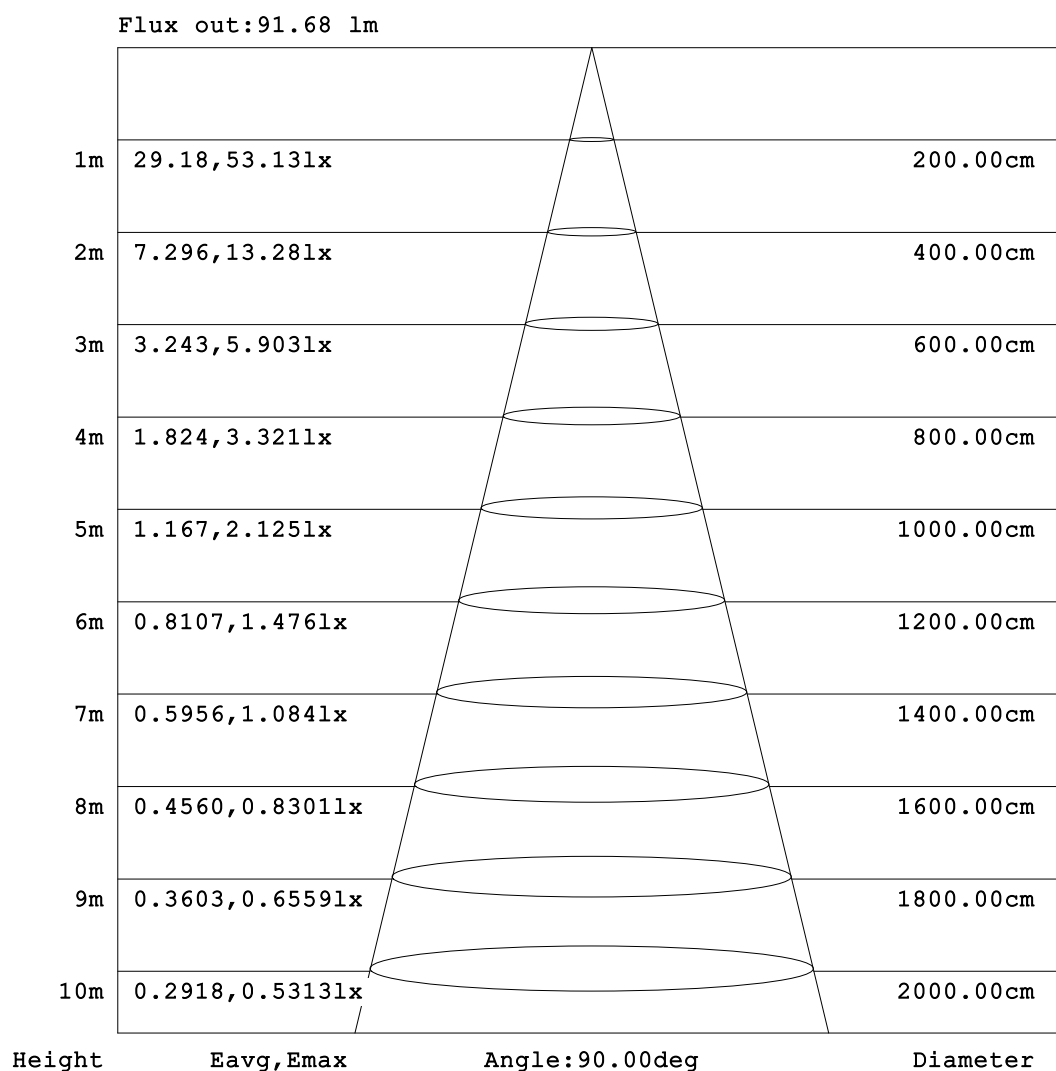


C Range: 0 - 360DEG
C Interval: 30.0DEG
Test Speed: HIGH
Temperature: 25.3°C
Operators:
Test Date: 2025-03-03

γ Range: 0 - 180DEG
γ Interval: 1.0DEG
Test System: EVERFINE GO-2000B_V1 SYSTEM V2.00.488
Humidity: 65.0%
Test Distance: 6.360m [K=1.0000]
Remarks:

AAI Figure

Test:U:24.00V I:0.6853A P:16.45W PF:1.000 Freq:0Hz Lamp Flux:500.327x1 lm		
NAME: SF24-24V-2835-288-U2-G	TYPE:	WEIGHT:
SPEC.:	DIM.: Length=1m	SERIAL No.:
MFR.: OLympia lighting	SUR.:	Shielding Angle:



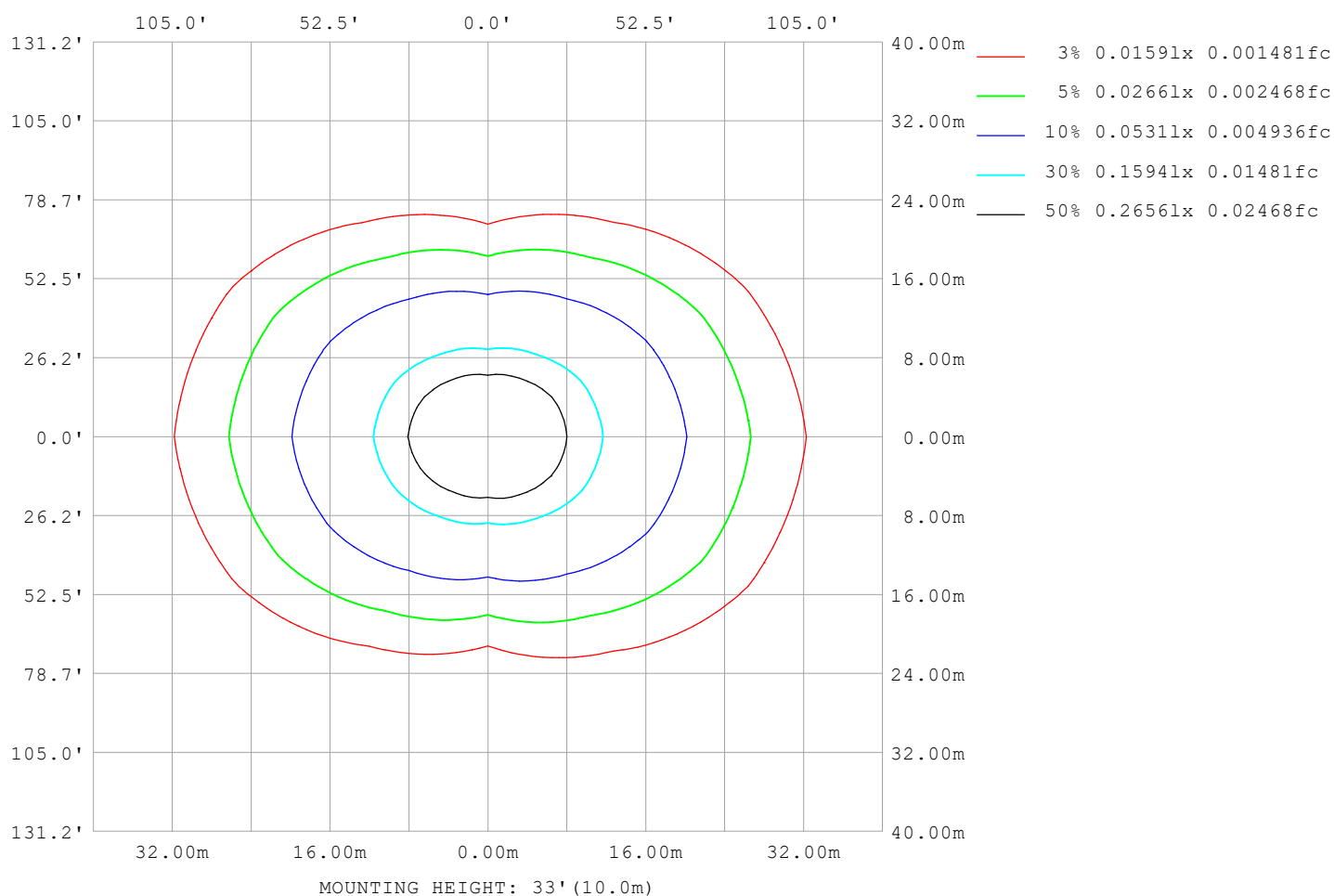
Note: The Curves indicate the illuminated area and the average illumination when the luminaire is at different distance.

C Range: 0 - 360DEG
C Interval: 30.0DEG
Test Speed: HIGH
Temperature: 25.3°C
Operators:
Test Date: 2025-03-03

γ Range: 0 - 180DEG
γ Interval: 1.0DEG
Test System: EVERFINE GO-2000B_V1 SYSTEM V2.00.488
Humidity: 65.0%
Test Distance: 6.360m [K=1.0000]
Remarks:

ISOLUX DIAGRAM

Test:U:24.00V I:0.6853A P:16.45W PF:1.000 Freq:0Hz Lamp Flux:500.327x1 lm		
NAME: SF24-24V-2835-288-U2-G	TYPE:	WEIGHT:
SPEC.:	DIM.: Length=1m	SERIAL No.:
MFR.: OLympia lighting	SUR.:	Shielding Angle:



C Range: 0 - 360DEG
C Interval: 30.0DEG
Test Speed: HIGH
Temperature: 25.3°C
Operators:
Test Date: 2025-03-03

γ Range: 0 - 180DEG
γ Interval: 1.0DEG
Test System: EVERFINE GO-2000B_V1 SYSTEM V2.00.488
Humidity: 65.0%
Test Distance: 6.360m [K=1.0000]
Remarks:

LED Avg.L Report

Test:U:24.00V I:0.6853A P:16.45W PF:1.000 Freq:0Hz Lamp Flux:500.327x1 lm		
NAME: SF24-24V-2835-288-U2-G	TYPE:	WEIGHT:
SPEC.:	DIM.: Length=1m	SERIAL No.:
MFR.: OLympia lighting	SUR.:	Shielding Angle:

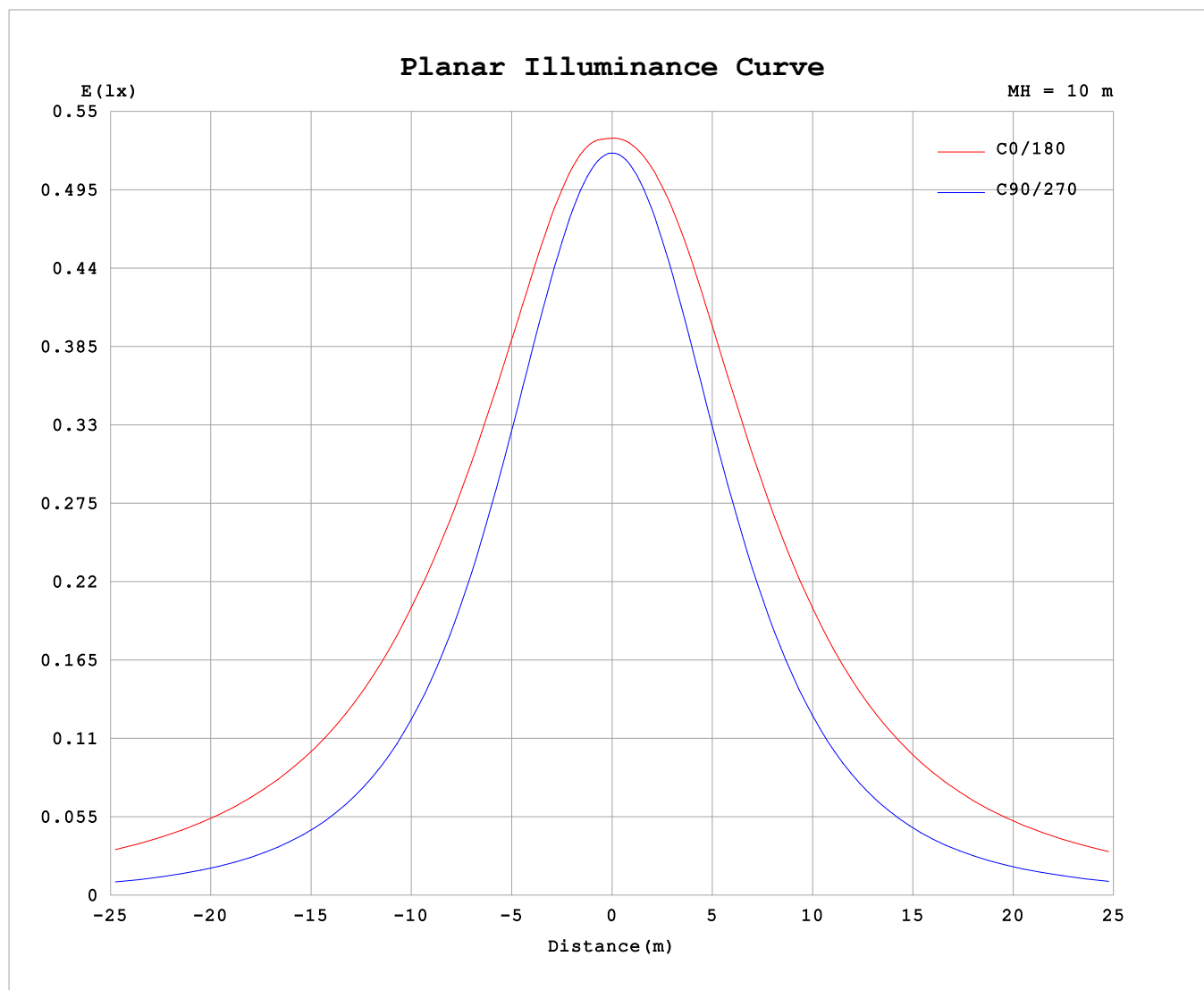
AvgL	cd/m2
L_0~180 (65) av	5797
L_0~180 (75) av	9562
L_0~180 (85) av	28480
L_90~270 (65) av	2065
L_90~270 (75) av	2137
L_90~270 (85) av	2734
L_45 (65) av	4128
L_45 (75) av	6422
L_45 (85) av	18482

Standard: GB/T 29293-2012

C Range: 0 - 360DEG
C Interval: 30.0DEG
Test Speed: HIGH
Temperature:25.3℃
Operators:
Test Date:2025-03-03

γ Range: 0 - 180DEG
γ Interval: 1.0DEG
Test System:EVERFINE GO-2000B_V1 SYSTEM V2.00.488
Humidity:65.0%
Test Distance:6.360m [K=1.0000]
Remarks:

Planar Illuminance Curve



C Range: 0 - 360DEG
C Interval: 30.0DEG
Test Speed: HIGH
Temperature: 25.3 °C
Operators:
Test Date: 2025-03-03

γ Range: 0 - 180DEG
 γ Interval: 1.0DEG
Test System: EVERFINE GO-2000B_V1 SYSTEM V2.00.488
Humidity: 65.0%
Test Distance: 6.360m [K=1.0000]
Remarks:

LUMINOUS DISTRIBUTION INTENSITY DATA

Test:U:24.00V I:0.6853A P:16.45W PF:1.000 Freq:0Hz Lamp Flux:500.327x1 lm																	
NAME: SF24-24V-2835-288-U2-G									TYPE:						WEIGHT:		
SPEC.:									DIM.: Length=1m						SERIAL No.:		
MFR.: OLympia lighting									SUR.:						Shielding Angle:		

Table--1

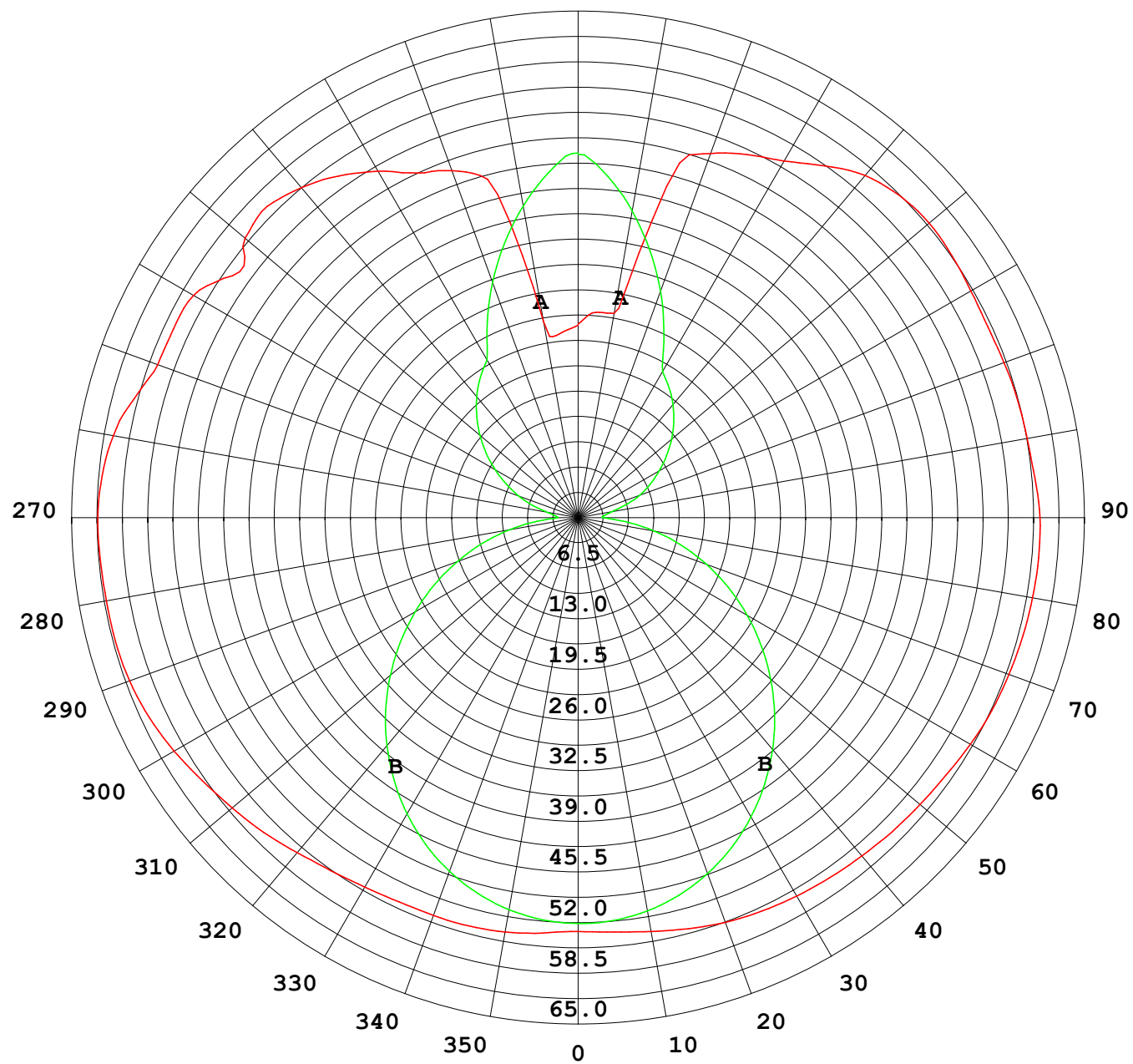
UNIT: cd

C (DEG) γ (DEG)	0	30	60	90	120	150	180	210	240	270	300	330						
0	52.3	52.3	52.3	52.3	52.3	52.3	52.3	52.3	52.3	52.3	52.3	52.3						
5	52.7	52.6	52.3	52.1	52.2	52.4	52.6	52.4	52.3	52.2	52.3	52.6						
10	53.2	53.1	52.0	51.4	51.8	52.7	53.2	52.7	52.0	51.5	52.1	53.2						
15	53.5	53.4	51.5	50.2	51.1	52.9	53.8	53.0	51.4	50.4	51.6	53.7						
20	53.5	53.5	50.6	48.5	50.1	53.0	54.5	53.2	50.6	48.9	50.8	53.9						
25	53.6	53.2	49.5	46.5	48.8	52.9	54.9	53.3	49.4	46.9	49.7	54.0						
30	54.0	52.8	48.0	44.1	47.2	52.6	55.3	53.1	48.0	44.6	48.4	53.9						
35	54.5	52.4	46.1	41.4	45.3	52.2	55.5	52.7	46.2	42.0	46.7	53.8						
40	55.3	52.2	44.1	38.4	43.2	51.7	55.8	52.3	44.2	39.0	44.7	53.6						
45	56.3	52.0	41.8	35.1	40.9	51.1	56.2	51.9	42.1	35.8	42.6	53.3						
50	57.1	51.9	39.6	31.6	38.5	50.6	56.5	51.4	39.7	32.4	40.3	52.9						
55	58.0	51.7	37.4	28.0	35.9	50.0	56.8	51.0	37.3	28.9	37.9	52.5						
60	59.0	51.7	35.1	24.2	33.4	49.6	57.3	50.6	34.9	25.2	35.5	52.2						
65	59.9	51.9	32.8	20.4	30.9	49.4	57.7	50.5	32.6	21.4	33.1	52.0						
70	60.4	52.0	30.8	16.6	28.7	49.2	58.0	50.3	30.6	17.6	30.9	51.7						
75	60.6	51.8	29.0	12.7	26.9	49.0	58.2	50.1	29.0	13.8	28.9	51.3						
80	60.6	51.6	27.6	8.96	25.6	48.7	58.4	49.9	27.7	9.97	27.2	50.9						
85	60.7	51.5	26.6	5.25	24.5	48.5	58.5	49.7	26.7	6.19	25.8	50.7						
90	60.7	51.5	26.0	2.64	23.8	48.5	58.4	49.6	25.9	3.21	24.8	50.7						
95	60.4	51.4	25.7	2.98	23.6	48.3	58.0	49.3	25.8	3.42	24.2	50.5						
100	59.7	50.4	22.0	4.08	24.2	48.3	57.7	49.2	26.3	4.42	21.2	49.6						
105	58.1	47.4	20.6	5.98	25.5	48.4	57.5	49.4	27.4	6.29	20.4	47.3						
110	56.6	45.7	20.5	8.14	27.4	48.7	57.3	49.7	29.2	8.45	20.2	45.7						
115	56.5	44.4	21.9	10.2	30.0	49.2	57.2	50.0	31.6	10.3	23.0	44.0						
120	56.2	43.3	24.9	12.4	32.4	50.0	57.4	50.9	33.8	12.1	24.3	45.6						
125	53.4	47.2	24.4	14.5	33.8	50.9	57.7	51.8	35.7	13.9	24.8	46.0						
130	55.0	47.6	24.1	16.5	35.2	51.6	58.0	52.3	37.2	15.8	25.4	44.3						
135	55.6	43.3	24.0	18.5	36.9	51.8	57.6	52.5	38.2	17.5	25.3	41.7						
140	54.5	37.5	22.9	20.4	38.4	51.2	56.5	51.9	39.8	19.1	24.6	39.3						
145	52.8	32.1	22.3	22.0	40.0	50.0	54.3	50.5	41.3	20.5	24.0	34.5						
150	50.6	29.0	22.6	23.6	41.4	49.2	52.1	49.6	42.6	21.8	23.4	30.4						
155	48.1	26.9	23.6	27.7	42.5	48.7	50.7	49.1	43.5	26.2	24.2	27.9						
160	46.7	24.8	28.4	32.3	43.5	48.5	49.0	48.7	44.0	31.1	28.7	25.4						
165	44.3	23.9	33.3	36.7	44.5	48.2	43.4	48.2	44.9	35.7	33.5	24.3						
170	25.1	28.0	38.1	40.8	44.8	48.0	26.2	47.9	45.2	40.2	38.2	29.6						
175	23.5	35.6	42.9	44.6	45.8	47.5	26.1	47.3	45.9	44.2	42.9	36.6						
180	24.3	43.5	46.8	47.0	47.0	44.0	24.5	43.3	47.0	46.9	47.1	43.8						

C Range: 0 - 360DEG
C Interval: 30.0DEG
Test Speed: HIGH
Temperature:25.3℃
Operators:
Test Date:2025-03-03

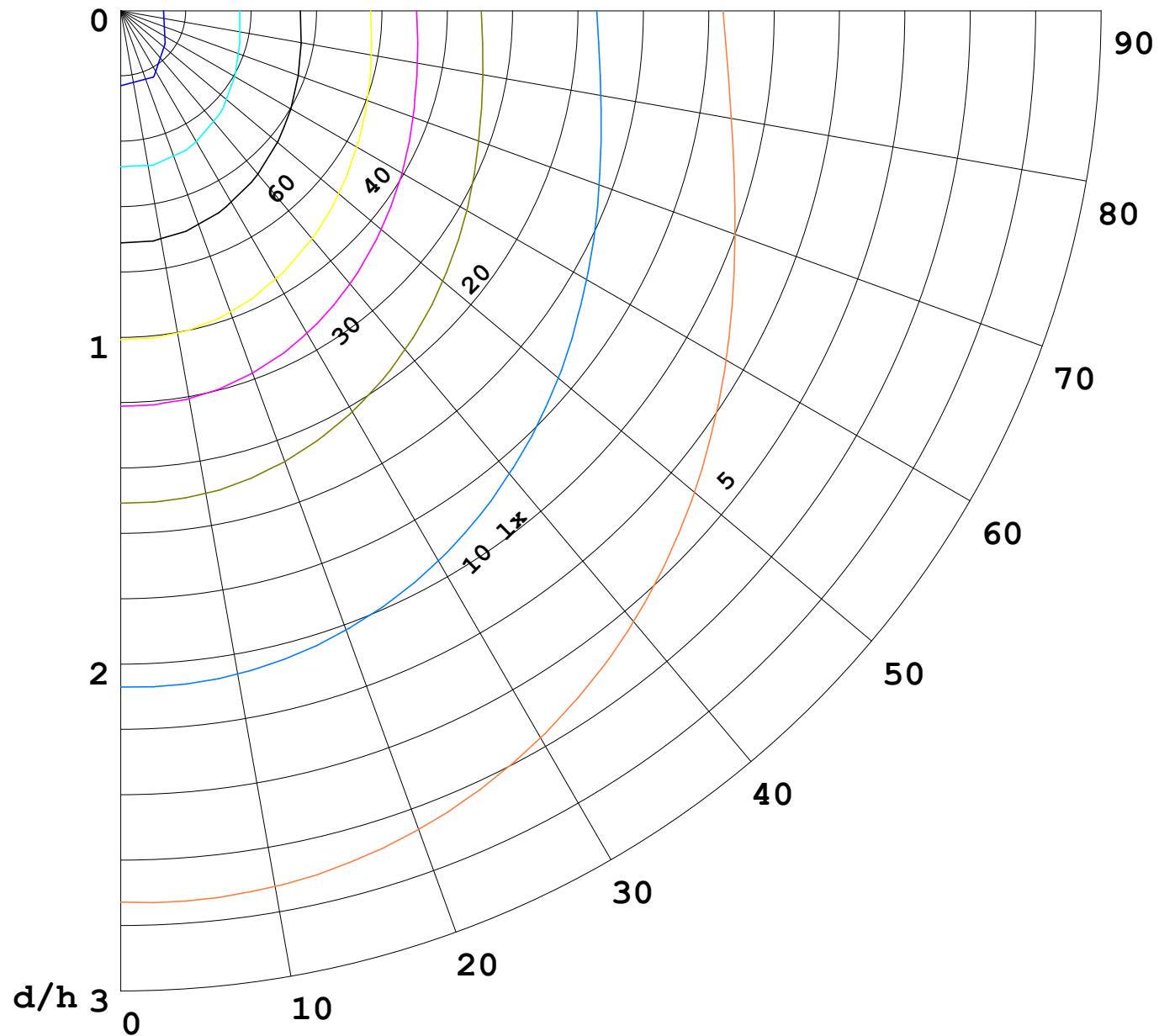
γ Range: 0 - 180DEG
γ Interval: 1.0DEG
Test System:EVERFINE GO-2000B_V1 SYSTEM V2.00.488
Humidity:65.0%
Test Distance:6.360m [K=1.0000]
Remarks:

I (cd)



1000 lm

$\kappa = 1$



F = 1000 lm
 K = 0.7
 Hcc = 0.8 m
 Hfc = 0.0 m
 Eave = 100 lx

	Pcc	Pw	Pfc
—————	70	50	30
—————	50	30	20

