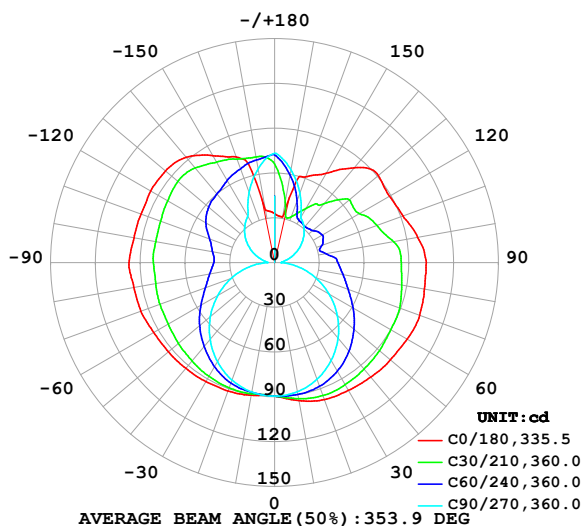


## LUMINAIRE PHOTOMETRIC TEST REPORT

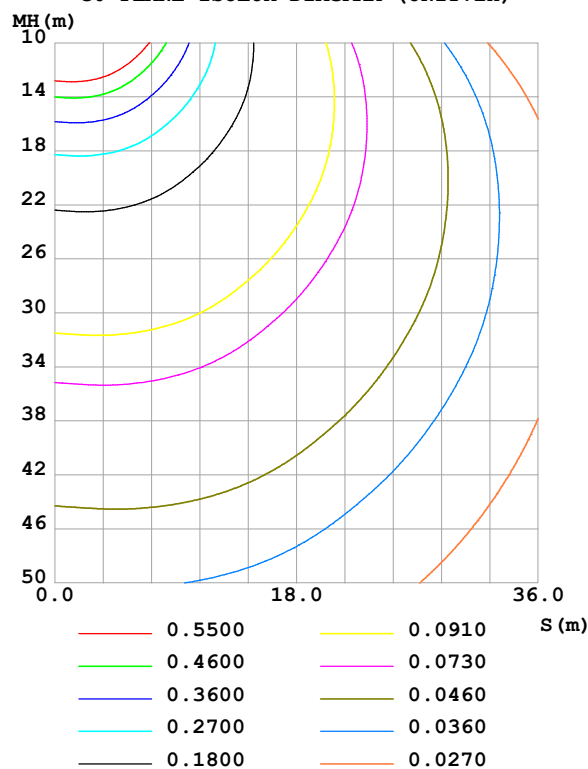
Test:U:24.00V I:0.6810A P:16.34W PF:1.000 Freq:0Hz Lamp Flux:827.353x1 lm		
NAME: SF24-24V-2835-288-U2-4000K-80	TYPE:	WEIGHT:
SPEC.:	DIM.: Length=1m	SERIAL No.:
MFR.: OLympia lighting	SUR.:	Shielding Angle:

DATA OF LAMP		PHOTOMETRIC DATA				Eff: 50.62 lm/W
MODEL	2835	I <sub>max</sub> (cd)	103.6	S/MH(C0/180)	1.58	
NOMINAL POWER(W)	16	LOR(%)	100.0	S/MH(C90/270)	1.27	
RATED VOLTAGE(V)	24	TOTAL FLUX(lm)	827.35	η UP,DN(C0-180)	21.7,27.9	
NOMINAL FLUX(lm)	827.353	CIE CLASS	DIFFUSE	η UP,DN(C180-360)	22.7,27.7	
LAMPS INSIDE	1	η up (%)	44.4	CIBSE SHR NOM	1.50	
TEST VOLTAGE(V)		η down (%)	55.6	CIBSE SHR MAX	1.55	

LUMINOUS INTENSITY DISTRIBUTION DIAGRAM



C0 PLANE ISOLUX DIAGRAM (UNIT:lx)



C Range: 0 - 360DEG  
C Interval: 30.0DEG  
Test Speed: HIGH  
Temperature:25.3℃  
Operators:  
Test Date:2025-05-13

γ Range: 0 - 180DEG  
γ Interval: 1.0DEG  
Test System:EVERFINE GO-2000B\_V1 SYSTEM V2.00.488  
Humidity:65.0%  
Test Distance:6.360m [K=1.0000]  
Remarks:

## ZONAL FLUX DIAGRAM

## ZONAL FLUX DIAGRAM:

$\gamma$	C0	C45	C90	C135	C180	C225	C270	C315	$\gamma$	$\Phi$ zone	$\Phi$ total	%lum, lamp
10	93.88	91.19	87.88	88.95	90.30	88.78	88.10	91.08	0- 10	8.571	8.571	1.04,1.04
20	97.67	91.54	83.21	87.63	91.54	87.65	83.73	91.50	10- 20	25.47	34.05	4.12,4.12
30	98.96	89.28	75.84	84.19	92.06	84.34	76.65	89.41	20- 30	40.74	74.79	9.04,9.04
40	100.2	85.40	66.21	79.40	92.58	79.79	67.30	85.71	30- 40	53.03	127.8	15.4,15.4
50	101.3	80.62	54.77	74.21	92.96	74.95	56.23	81.08	40- 50	61.77	189.6	22.9,22.9
60	102.6	75.34	42.16	69.01	93.61	69.78	43.90	75.92	50- 60	66.88	256.5	31,31
70	103.5	70.90	28.94	64.97	95.37	65.70	30.90	71.51	60- 70	68.94	325.4	39.3,39.3
80	102.0	66.64	15.63	62.08	95.76	62.61	17.59	67.34	70- 80	68.47	393.9	47.6,47.6
90	101.6	63.76	4.417	60.82	97.58	61.09	5.200	64.02	80- 90	66.05	459.9	55.6,55.6
100	97.38	58.05	6.707	61.63	95.67	61.65	7.085	58.97	90-100	63.78	523.7	63.3,63.3
110	91.49	53.49	12.42	64.18	95.31	63.88	12.71	54.51	100-110	60.15	583.9	70.6,70.6
120	89.07	51.42	18.87	68.29	96.00	68.08	19.07	57.91	110-120	57.97	641.8	77.6,77.6
130	90.88	49.57	25.16	70.65	95.53	71.27	25.56	56.88	120-130	54.26	696.1	84.1,84.1
140	83.00	41.60	30.77	71.81	92.24	71.53	31.31	50.14	130-140	46.81	742.9	89.8,89.8
150	69.10	37.49	35.41	71.57	82.85	70.75	36.04	45.93	140-150	36.28	779.2	94.2,94.2
160	61.15	38.41	49.67	71.12	75.29	70.45	50.14	44.44	150-160	26.02	805.2	97.3,97.3
170	31.21	50.41	63.22	71.94	35.85	70.98	63.86	54.99	160-170	16.40	821.6	99.3,99.3
180	32.83	69.16	73.34	71.35	32.92	69.25	73.16	71.32	170-180	5.751	827.4	100,100
DEG	LUMINOUS INTENSITY:cd									UNIT:lm		

Conical surface Flux(90deg): 157.83 lm

%lum = 19.1%

%lamp = 19.1%

Conical surface Flux(130deg): 290.82 lm

%lum = 35.2%

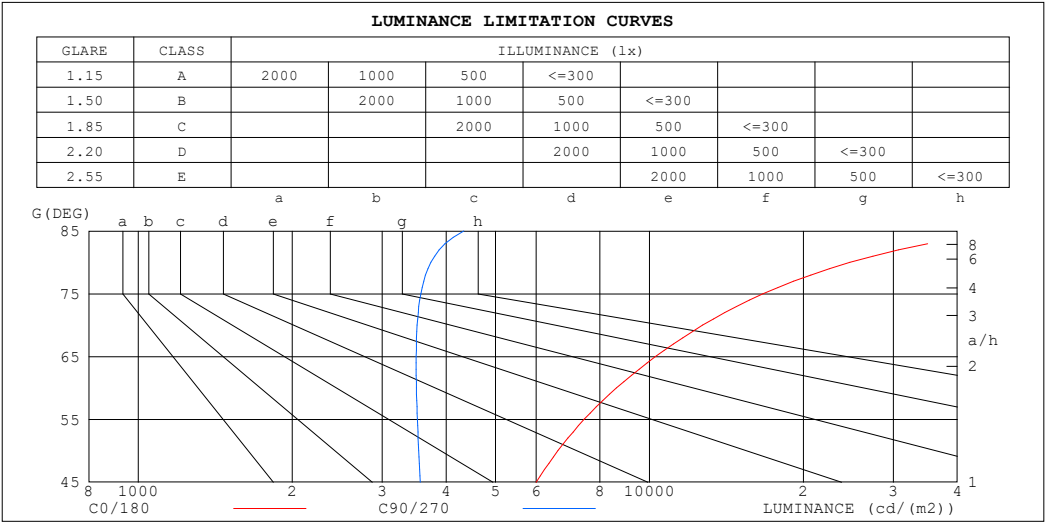
%lamp = 35.2%

C Range: 0 - 360DEG  
 C Interval: 30.0DEG  
 Test Speed: HIGH  
 Temperature:25.3℃  
 Operators:  
 Test Date:2025-05-13

$\gamma$  Range: 0 - 180DEG  
 $\gamma$  Interval: 1.0DEG  
 Test System:EVERFINE GO-2000B\_V1 SYSTEM V2.00.488  
 Humidity:65.0%  
 Test Distance:6.360m [K=1.0000]  
 Remarks:

LUMINANCE LIMITATION CURVES

Test:U:24.00V I:0.6810A P:16.34W PF:1.000 Freq:0Hz Lamp Flux:827.353x1 lm		
NAME: SF24-24V-2835-288-U2-4000K-80	TYPE:	WEIGHT:
SPEC.:	DIM.: Length=1m	SERIAL No.:
MFR.: OLympia lighting	SUR.:	Shielding Angle:



LUMINANCE cd/(m2)		
G (DEG)	C0/180	C90/270
85	48922	4332
80	24671	3736
75	16685	3569
70	12709	3511
65	10279	3496
60	8619	3499
55	7452	3513
50	6623	3536
45	6001	3560

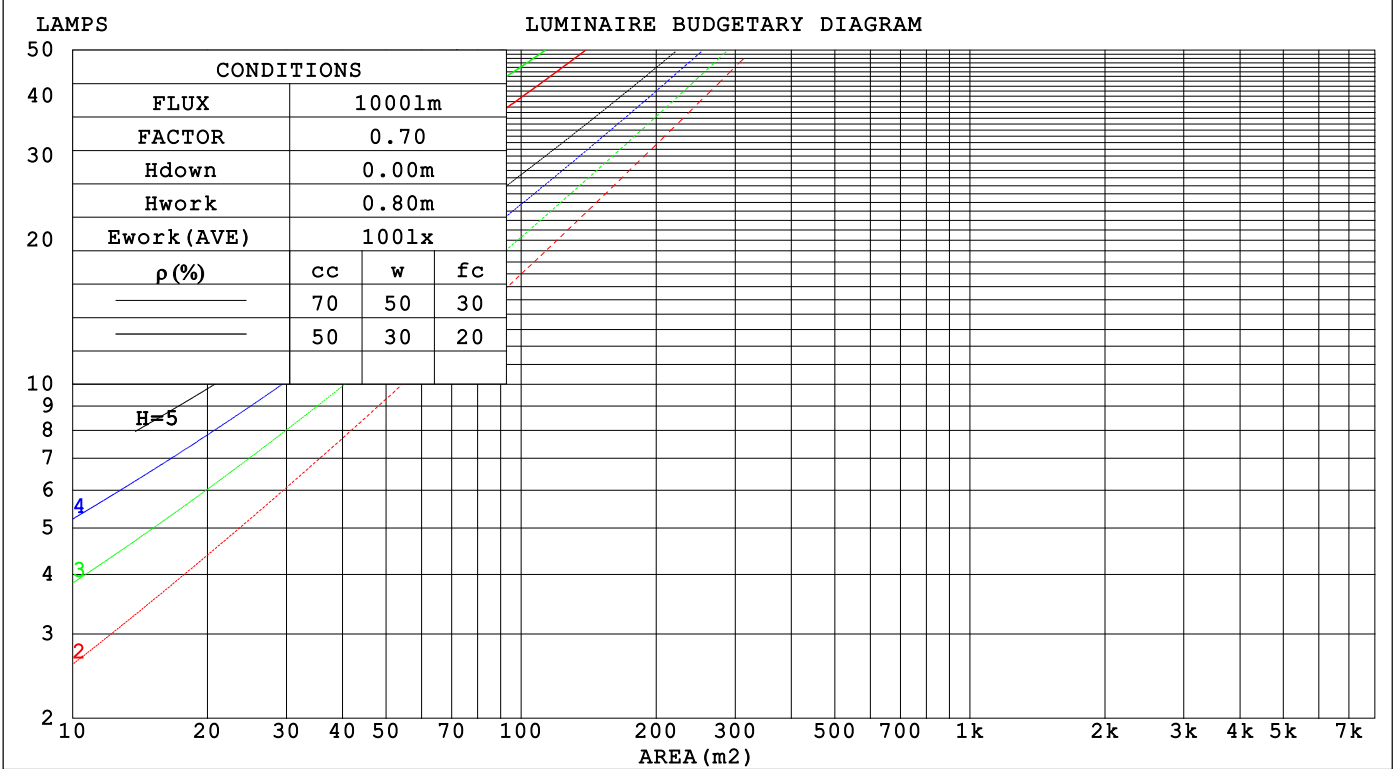
C Range: 0 - 360DEG  
C Interval: 30.0DEG  
Test Speed: HIGH  
Temperature:25.3℃  
Operators:  
Test Date:2025-05-13

γ Range: 0 - 180DEG  
γ Interval: 1.0DEG  
Test System:EVERFINE GO-2000B\_V1 SYSTEM V2.00.488  
Humidity:65.0%  
Test Distance:6.360m [K=1.0000]  
Remarks:

CU AND LUMINAIRE BUDGETARY ESTIMATE DIAGRAM

Test:U:24.00V I:0.6810A P:16.34W PF:1.000 Freq:0Hz		
Lamp Flux:827.353x1 lm		
NAME: SF24-24V-2835-288-U2-4000K-80	TYPE:	WEIGHT:
SPEC.:	DIM.: Length=1m	SERIAL No.:
MFR.: OLYMPIA lighting	SUR.:	Shielding Angle:

pcc	80%			70%			50%			30%			10%			0
pw	50%	30%	10%	50%	30%	10%	50%	30%	10%	50%	30%	10%	50%	30%	10%	0
pfc	20%			20%			20%			20%			20%			0
RCR	RCR:Room Cavity Ratio															



C Range: 0 - 360DEG  
C Interval: 30.0DEG  
Test Speed: HIGH  
Temperature:25.3℃  
Operators:  
Test Date:2025-05-13

γ Range: 0 - 180DEG  
γ Interval: 1.0DEG  
Test System:EVERFINE GO-2000B\_V1 SYSTEM V2.00.488  
Humidity:65.0%  
Test Distance:6.360m [K=1.0000]  
Remarks:

## WEC AND CCEC

Test:U:24.00V I:0.6810A P:16.34W PF:1.000 Freq:0Hz Lamp Flux:827.353x1 lm		
NAME: SF24-24V-2835-288-U2-4000K-80	TYPE:	WEIGHT:
SPEC.:	DIM.: Length=1m	SERIAL No.:
MFR.: OLympia lighting	SUR.:	Shielding Angle:

pcc	80%			70%			50%			30%			10%			0														
pw	50%	30%	10%	50%	30%	10%	50%	30%	10%	50%	30%	10%	50%	30%	10%	0														
pfc	20%			20%			20%			20%			20%			0														
RCR	RCR:Room Cavity Ratio															Wall Exitance Coefficients(WEC)														
0.0																														
1.0	.386	.219	.070	.365	.208	.066	.326	.187	.060	.291	.168	.054	.258	.150	.048															
2.0	.328	.180	.055	.309	.170	.052	.274	.152	.047	.241	.135	.042	.211	.119	.038															
3.0	.289	.154	.046	.272	.145	.044	.239	.130	.039	.209	.115	.035	.182	.101	.031															
4.0	.259	.134	.040	.243	.127	.038	.213	.113	.034	.186	.100	.030	.160	.087	.027															
5.0	.235	.120	.035	.220	.113	.033	.193	.100	.030	.168	.088	.026	.144	.077	.023															
6.0	.215	.108	.031	.201	.102	.029	.176	.090	.026	.153	.079	.023	.131	.069	.020															
7.0	.198	.098	.028	.185	.092	.026	.162	.082	.024	.141	.072	.021	.120	.062	.018															
8.0	.183	.090	.025	.172	.085	.024	.150	.075	.021	.130	.066	.019	.111	.057	.017															
9.0	.171	.083	.023	.160	.078	.022	.140	.069	.020	.121	.061	.017	.103	.053	.015															
10.0	.160	.077	.021	.150	.072	.020	.131	.064	.018	.113	.056	.016	.097	.049	.014															

pcc	80%			70%			50%			30%			10%			0
pw	50%	30%	10%	50%	30%	10%	50%	30%	10%	50%	30%	10%	50%	30%	10%	0
pfc	20%			20%			20%			20%			20%			0
RCR	RCR:Room Cavity Ratio						Ceiling Cavity Exitance Coefficients (CCEC)									
0.0	.529	.529	.529	.452	.452	.452	.308	.308	.308	.177	.177	.177	.057	.057	.057	
1.0	.527	.497	.470	.451	.426	.404	.308	.293	.279	.177	.170	.163	.057	.055	.053	
2.0	.520	.475	.437	.446	.409	.378	.306	.283	.264	.176	.165	.154	.057	.053	.050	
3.0	.513	.460	.417	.440	.397	.361	.302	.276	.254	.175	.161	.149	.056	.052	.049	
4.0	.506	.448	.404	.434	.387	.351	.299	.270	.247	.173	.158	.146	.056	.051	.048	
5.0	.499	.439	.395	.428	.380	.343	.295	.265	.242	.171	.156	.144	.055	.051	.047	
6.0	.492	.431	.388	.423	.374	.338	.292	.261	.239	.169	.154	.142	.055	.050	.047	
7.0	.485	.425	.383	.417	.369	.334	.288	.258	.237	.167	.152	.141	.054	.050	.047	
8.0	.479	.420	.380	.412	.364	.331	.285	.256	.235	.166	.151	.140	.054	.049	.046	
9.0	.473	.415	.377	.407	.361	.329	.282	.253	.233	.164	.150	.139	.053	.049	.046	
10.0	.467	.411	.375	.403	.357	.327	.279	.251	.232	.163	.149	.139	.053	.049	.046	

C Range: 0 - 360DEG  
C Interval: 30.0DEG  
Test Speed: HIGH  
Temperature:25.3℃  
Operators:  
Test Date:2025-05-13

γ Range: 0 - 180DEG  
γ Interval: 1.0DEG  
Test System:EVERFINE GO-2000B\_V1 SYSTEM V2.00.488  
Humidity:65.0%  
Test Distance:6.360m [K=1.0000]  
Remarks:

UGR(Unified Glare Rating) Table

Test:U:24.00V I:0.6810A P:16.34W PF:1.000 Freq:0Hz Lamp Flux:827.353x1 lm											
NAME: SF24-24V-2835-288-U2-4000K-80						TYPE:		WEIGHT:			
SPEC.:						DIM.: Length=1m		SERIAL No.:			
MFR.: OLympia lighting						SUR.:		Shielding Angle:			
ceiling/cavity	0.7	0.7	0.5	0.5	0.3	0.7	0.7	0.5	0.5	0.3	
walls	0.5	0.3	0.5	0.3	0.3	0.5	0.3	0.5	0.3	0.3	
working plane	0.2	0.2	0.2	0.2	0.2	0.2	0.2	0.2	0.2	0.2	
Room dimensions		Viewed crosswise					Viewed endwise				
x = 2H y = 2H	2H	16.7	17.8	17.5	18.6	19.7	13.1	14.2	13.9	15.0	16.0
	3H	20.0	21.0	20.8	21.9	22.9	14.8	15.8	15.7	16.7	17.8
	4H	21.9	22.8	22.7	23.7	24.8	15.7	16.6	16.5	17.5	18.6
	6H	23.9	24.8	24.8	25.7	26.8	16.4	17.3	17.3	18.2	19.3
	8H	25.1	25.9	26.0	26.8	28.0	16.7	17.6	17.6	18.4	19.6
	12H	26.4	27.2	27.3	28.1	29.3	17.0	17.8	17.8	18.7	19.8
4H	2H	17.2	18.1	18.0	19.0	20.1	14.7	15.7	15.6	16.5	17.6
	3H	20.8	21.6	21.7	22.5	23.6	16.7	17.5	17.6	18.4	19.6
	4H	22.8	23.6	23.7	24.5	25.7	17.7	18.5	18.6	19.4	20.6
	6H	25.1	25.8	26.0	26.7	27.9	18.7	19.4	19.6	20.3	21.5
	8H	26.4	27.0	27.3	27.9	29.2	19.1	19.7	20.0	20.7	21.9
	12H	27.8	28.4	28.8	29.4	30.6	19.5	20.0	20.4	21.0	22.2
8H	4H	23.1	23.8	24.1	24.7	25.9	19.4	20.0	20.3	20.9	22.2
	6H	25.8	26.3	26.7	27.2	28.5	20.7	21.2	21.7	22.2	23.5
	8H	27.3	27.7	28.2	28.7	30.0	21.4	21.8	22.3	22.8	24.1
	12H	29.0	29.4	30.0	30.4	31.7	22.0	22.4	22.9	23.4	24.6
12H	4H	23.1	23.7	24.1	24.7	25.9	20.0	20.6	20.9	21.5	22.7
	6H	25.9	26.3	26.8	27.3	28.6	21.6	22.1	22.6	23.0	24.3
	8H	27.5	27.9	28.5	28.9	30.2	22.4	22.9	23.4	23.8	25.1
Variations with the observer position at spacings(CIE Pub.117):											
S = 1.0H		+ 0.1 / - 0.1					+ 0.1 / - 0.1				
1.5H		+ 0.2 / - 0.3					+ 0.2 / - 0.2				
2.0H		+ 0.3 / - 0.3					+ 0.3 / - 0.4				

CIE Pub.117, 827.4 lm Total Lamp Luminous Flux Correct (8log(F/F0) = -0.7)  
Area: 0.024 m2

C Range: 0 - 360DEG  
C Interval: 30.0DEG  
Test Speed: HIGH  
Temperature:25.3℃  
Operators:  
Test Date:2025-05-13

γ Range: 0 - 180DEG  
γ Interval: 1.0DEG  
Test System:EVERFINE GO-2000B\_V1 SYSTEM V2.00.488  
Humidity:65.0%  
Test Distance:6.360m [K=1.0000]  
Remarks:

## UTILIZATION FACTORS TABLE

Test:U:24.00V I:0.6810A P:16.34W PF:1.000 Freq:0Hz Lamp Flux:827.353x1 lm		
NAME: SF24-24V-2835-288-U2-4000K-80	TYPE:	WEIGHT:
SPEC.:	DIM.: Length=1m	SERIAL No.:
MFR.: OLympia lighting	SUR.:	Shielding Angle:

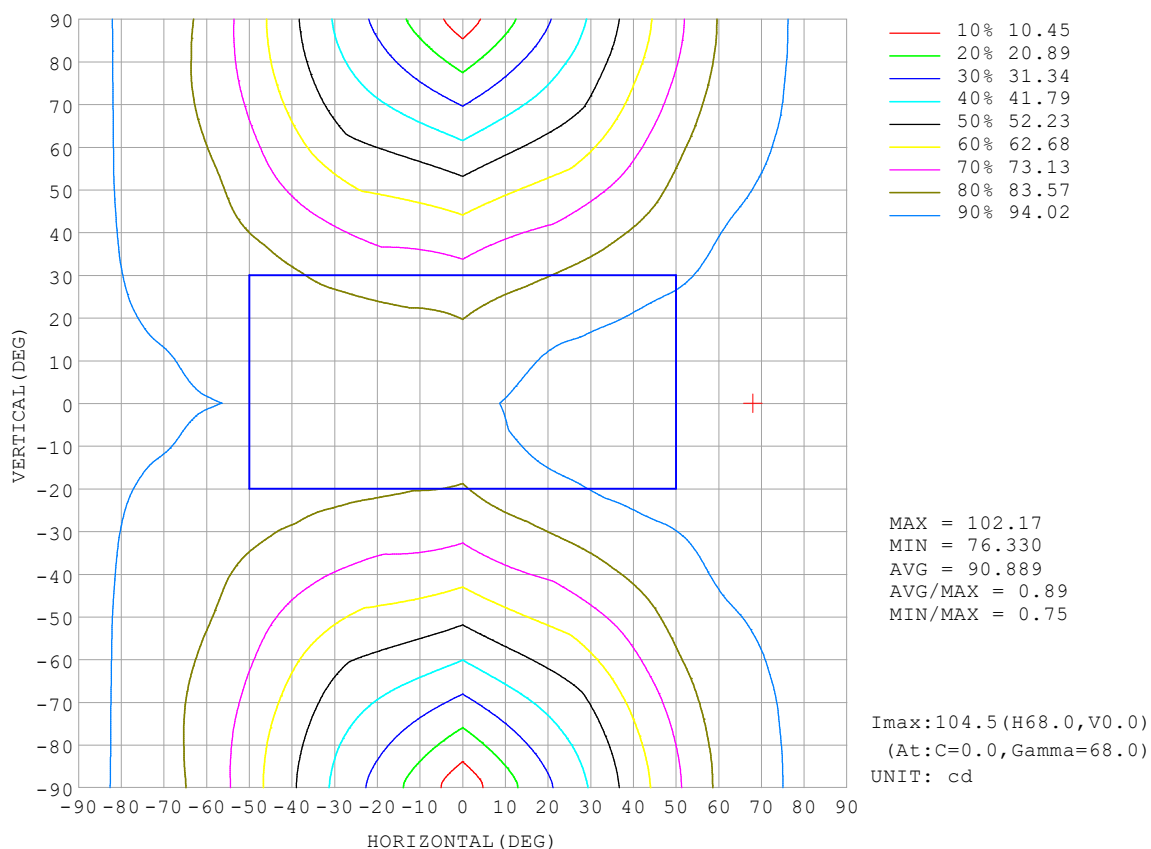
REFLECTANCE										
Ceiling	0.8	0.8	0.8	0.7	0.7	0.7	0.5	0.5	0.5	0
Walls	0.7	0.5	0.3	0.7	0.5	0.3	0.7	0.5	0.3	0
Working plane	0.2	0.2	0.2	0.2	0.2	0.2	0.2	0.2	0.2	0
ROOM INDEX	UTILIZATION FACTORS (PERCENT) $k(RI) \times RCR = 5$									
$k = 0.60$	39	27	20	38	26	20	34	24	18	11
0.80	48	35	27	46	33	26	41	31	24	15
1.00	56	42	33	52	40	32	46	38	29	18
1.25	62	49	40	59	47	38	51	42	35	22
1.50	68	55	45	63	52	43	55	46	39	24
2.00	75	63	54	70	59	51	61	52	46	29
2.50	80	69	60	74	65	57	64	57	50	31
3.00	84	74	66	78	69	62	67	60	54	34
4.00	89	80	73	83	75	68	71	65	60	38
5.00	92	84	78	86	79	73	73	68	64	40
ROOM INDEX	UF (total)									Direct
According to DIN EN 13032-2 2004			Suspended					SHRNOM = 1.25		

C Range: 0 - 360DEG  
 C Interval: 30.0DEG  
 Test Speed: HIGH  
 Temperature: 25.3 °C  
 Operators:  
 Test Date: 2025-05-13

γ Range: 0 - 180DEG  
 γ Interval: 1.0DEG  
 Test System: EVERFINE GO-2000B\_V1 SYSTEM V2.00.488  
 Humidity: 65.0%  
 Test Distance: 6.360m [K=1.0000]  
 Remarks:

## ISOCANDELA DIAGRAM

Test:U:24.00V I:0.6810A P:16.34W PF:1.000 Freq:0Hz Lamp Flux:827.353x1 lm		
NAME: SF24-24V-2835-288-U2-4000K-80	TYPE:	WEIGHT:
SPEC.:	DIM.: Length=1m	SERIAL No.:
MFR.: OLympia lighting	SUR.:	Shielding Angle:



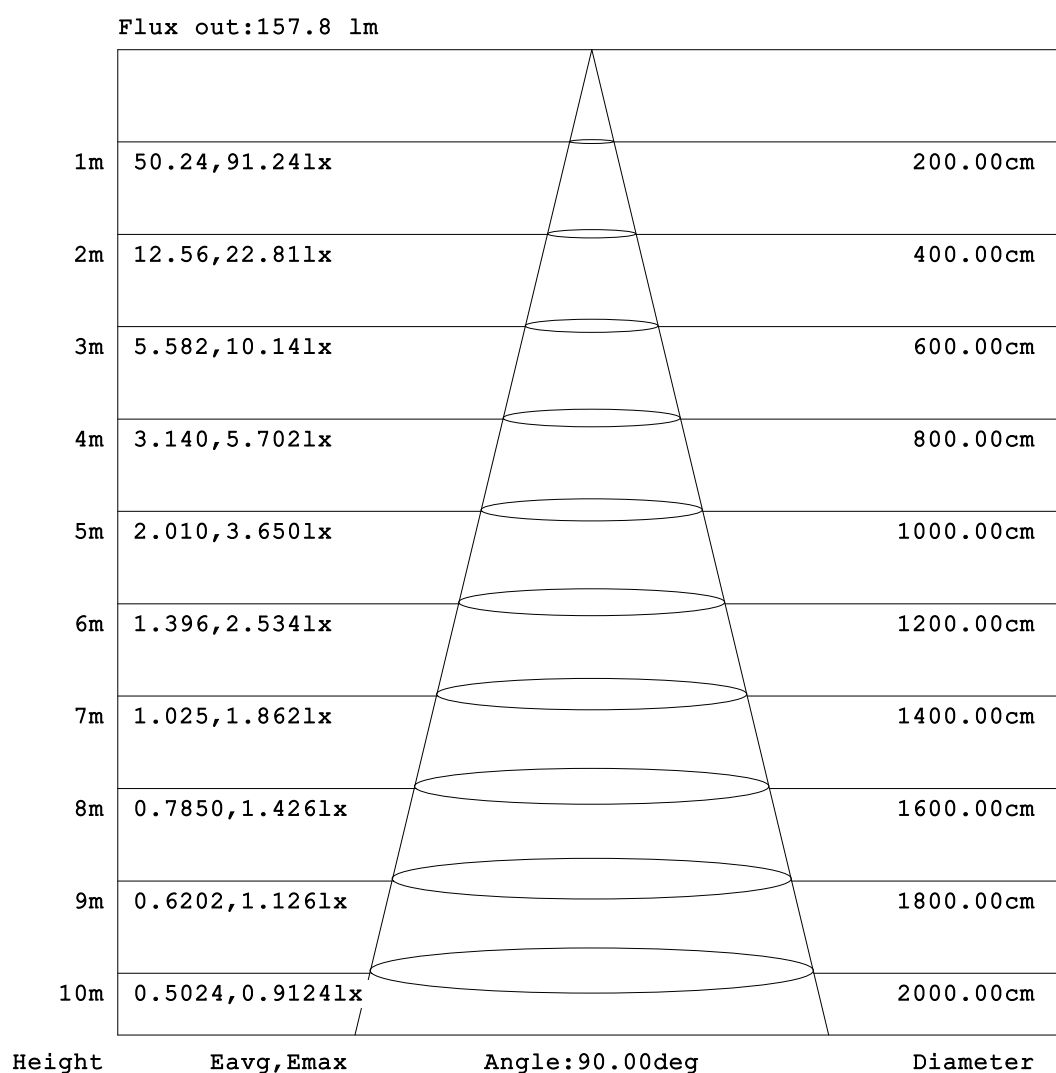
C Range: 0 - 360DEG  
C Interval: 30.0DEG  
Test Speed: HIGH  
Temperature:25.3℃  
Operators:  
Test Date:2025-05-13

γ Range: 0 - 180DEG  
γ Interval: 1.0DEG  
Test System:EVERFINE GO-2000B\_V1 SYSTEM V2.00.488  
Humidity:65.0%  
Test Distance:6.360m [K=1.0000]  
Remarks:



## AAI Figure

Test:U:24.00V I:0.6810A P:16.34W PF:1.000 Freq:0Hz Lamp Flux:827.353x1 lm		
NAME: SF24-24V-2835-288-U2-4000K-80	TYPE:	WEIGHT:
SPEC.:	DIM.: Length=1m	SERIAL No.:
MFR.: OLympia lighting	SUR.:	Shielding Angle:



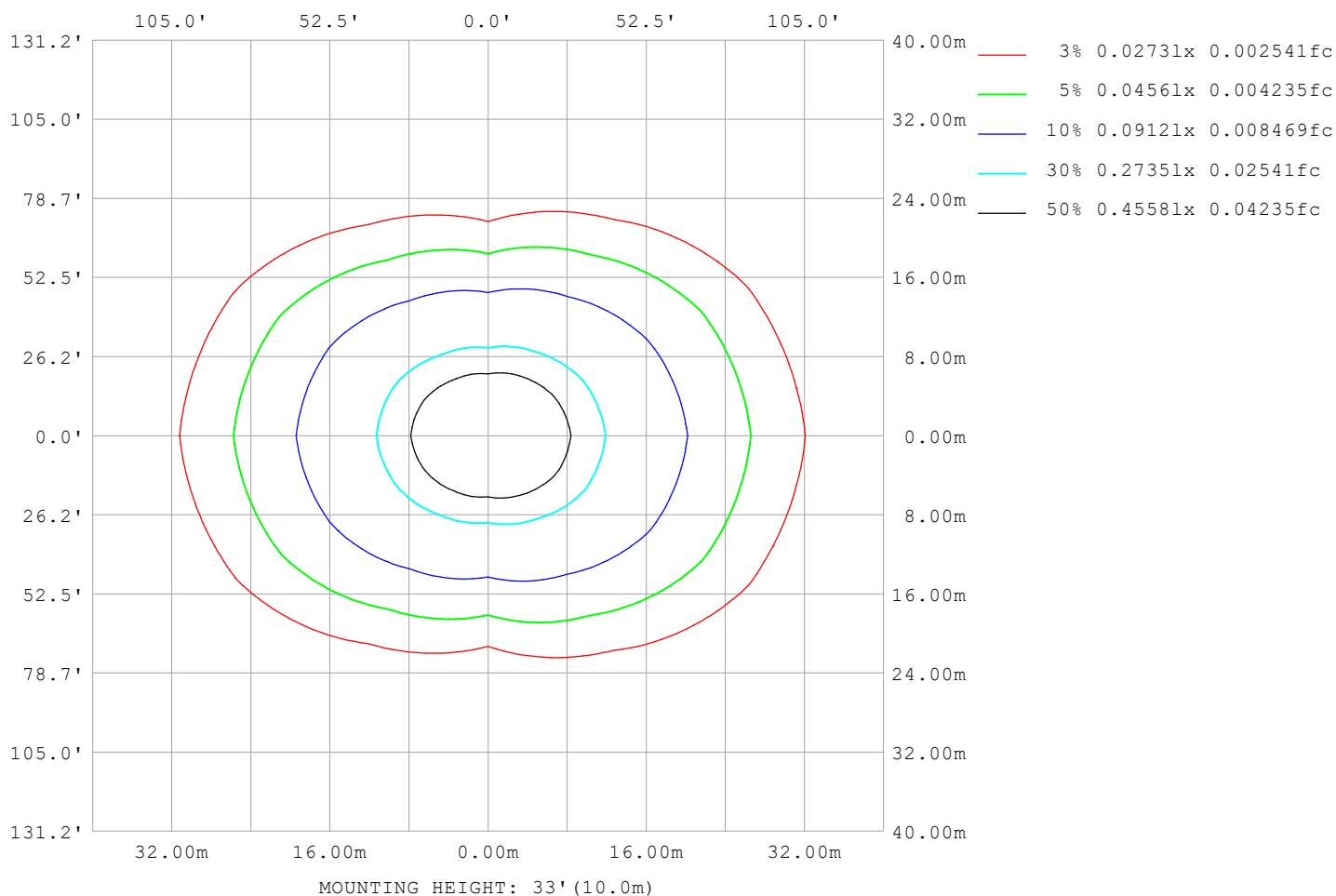
Note: The Curves indicate the illuminated area and the average illumination when the luminaire is at different distance.

C Range: 0 - 360DEG  
C Interval: 30.0DEG  
Test Speed: HIGH  
Temperature: 25.3°C  
Operators:  
Test Date: 2025-05-13

γ Range: 0 - 180DEG  
γ Interval: 1.0DEG  
Test System: EVERFINE GO-2000B\_V1 SYSTEM V2.00.488  
Humidity: 65.0%  
Test Distance: 6.360m [K=1.0000]  
Remarks:

## ISOLUX DIAGRAM

Test:U:24.00V I:0.6810A P:16.34W PF:1.000 Freq:0Hz Lamp Flux:827.353x1 lm		
NAME: SF24-24V-2835-288-U2-4000K-80	TYPE:	WEIGHT:
SPEC.:	DIM.: Length=1m	SERIAL No.:
MFR.: OLympia lighting	SUR.:	Shielding Angle:



C Range: 0 - 360DEG  
C Interval: 30.0DEG  
Test Speed: HIGH  
Temperature: 25.3°C  
Operators:  
Test Date: 2025-05-13

γ Range: 0 - 180DEG  
γ Interval: 1.0DEG  
Test System: EVERFINE GO-2000B\_V1 SYSTEM V2.00.488  
Humidity: 65.0%  
Test Distance: 6.360m [K=1.0000]  
Remarks:

## LED Avg.L Report

Test:U:24.00V I:0.6810A P:16.34W PF:1.000 Freq:0Hz Lamp Flux:827.353x1 lm		
NAME: SF24-24V-2835-288-U2-4000K-80	TYPE:	WEIGHT:
SPEC.:	DIM.: Length=1m	SERIAL No.:
MFR.: OLympia lighting	SUR.:	Shielding Angle:

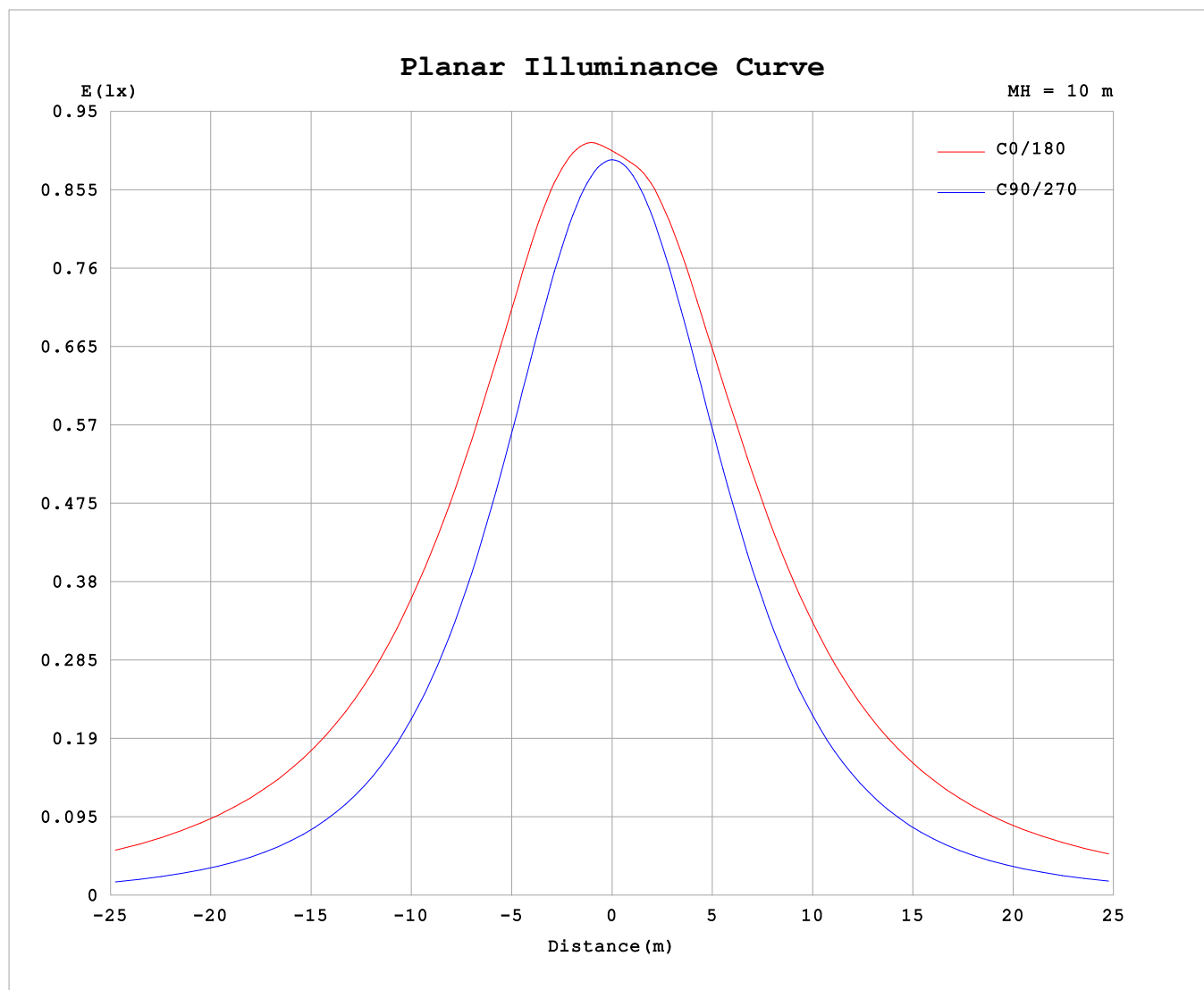
AvgL	cd/m2
L_0~180 (65) av	9755
L_0~180 (75) av	15960
L_0~180 (85) av	47394
L_90~270 (65) av	3602
L_90~270 (75) av	3744
L_90~270 (85) av	4796
L_45 (65) av	6953
L_45 (75) av	10783
L_45 (85) av	30734

Standard: GB/T 29293-2012

C Range: 0 - 360DEG  
C Interval: 30.0DEG  
Test Speed: HIGH  
Temperature:25.3℃  
Operators:  
Test Date:2025-05-13

γ Range: 0 - 180DEG  
γ Interval: 1.0DEG  
Test System:EVERFINE GO-2000B\_V1 SYSTEM V2.00.488  
Humidity:65.0%  
Test Distance:6.360m [K=1.0000]  
Remarks:

## Planar Illuminance Curve



C Range: 0 - 360DEG  
C Interval: 30.0DEG  
Test Speed: HIGH  
Temperature: 25.3 °C  
Operators:  
Test Date: 2025-05-13

$\gamma$  Range: 0 - 180DEG  
 $\gamma$  Interval: 1.0DEG  
Test System: EVERFINE GO-2000B\_V1 SYSTEM V2.00.488  
Humidity: 65.0%  
Test Distance: 6.360m [K=1.0000]  
Remarks:

## LUMINOUS DISTRIBUTION INTENSITY DATA

Test:U:24.00V I:0.6810A P:16.34W PF:1.000 Freq:0Hz Lamp Flux:827.353x1 lm		
NAME: SF24-24V-2835-288-U2-4000K-80	TYPE:	WEIGHT:
SPEC.:	DIM.: Length=1m	SERIAL No.:
MFR.: Olym pia lighting	SUR.:	Shielding Angle:

Table--1

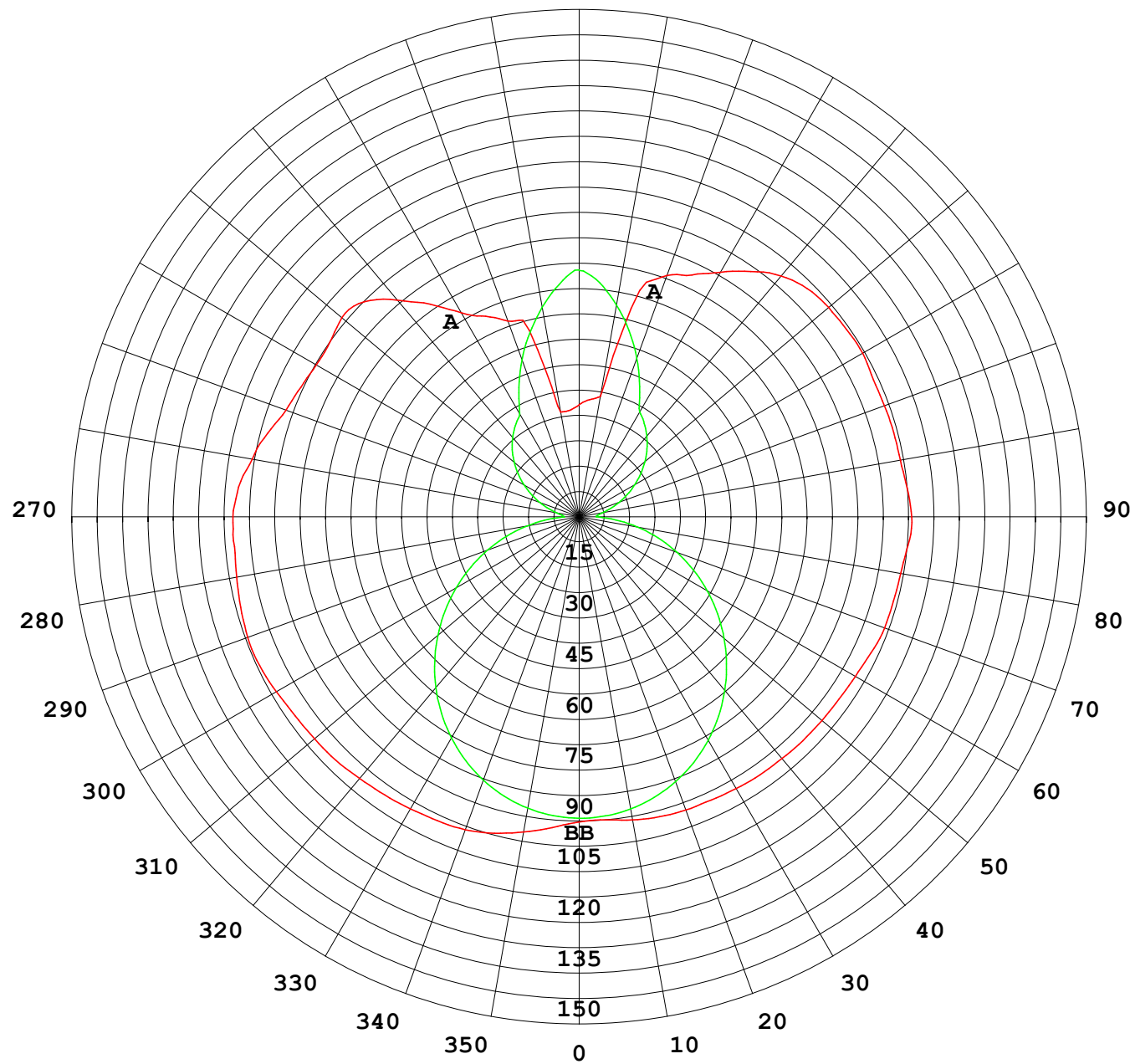
UNIT: cd

C (DEG) γ (DEG)	0	30	60	90	120	150	180	210	240	270	300	330							
0	89.5	89.5	89.5	89.5	89.5	89.5	89.5	89.5	89.5	89.5	89.5	89.5							
5	91.5	90.8	89.8	89.1	88.9	89.1	89.2	88.8	89.0	89.2	89.8	90.7							
10	93.9	92.6	89.8	87.9	88.2	89.7	90.3	89.2	88.3	88.1	89.9	92.3							
15	96.1	93.9	89.3	85.9	87.2	90.0	91.1	89.5	87.5	86.3	89.5	93.6							
20	97.7	94.8	88.2	83.2	85.6	89.6	91.5	89.3	85.9	83.7	88.6	94.4							
25	98.4	95.0	86.5	79.8	83.3	88.9	91.7	88.7	83.6	80.5	86.9	94.7							
30	99.0	94.5	84.0	75.8	80.4	88.0	92.1	88.1	80.6	76.6	84.6	94.2							
35	99.5	93.9	81.1	71.3	77.0	86.9	92.5	87.3	77.2	72.2	81.8	93.7							
40	100	93.2	77.6	66.2	73.1	85.7	92.6	86.1	73.4	67.3	78.4	93.0							
45	101	92.5	73.5	60.7	69.1	84.5	92.8	85.1	69.6	61.9	74.5	92.4							
50	101	91.8	69.4	54.8	64.9	83.5	93.0	84.2	65.6	56.2	70.5	91.7							
55	102	90.7	65.2	48.6	60.4	82.8	93.1	83.2	61.4	50.2	66.4	90.7							
60	103	89.9	60.7	42.2	56.0	82.0	93.6	82.4	57.1	43.9	62.0	89.8							
65	103	89.7	56.4	35.6	51.8	81.7	94.5	81.9	52.9	37.5	57.9	89.5							
70	103	89.2	52.5	28.9	48.3	81.7	95.4	81.8	49.5	30.9	53.9	89.1							
75	103	87.8	49.3	22.3	45.6	81.2	95.5	81.5	46.5	24.2	50.7	87.9							
80	102	86.6	46.6	15.6	43.4	80.7	95.8	80.9	44.2	17.6	48.1	86.6							
85	101	85.5	44.2	9.10	41.6	80.7	96.8	80.8	42.3	11.0	45.3	85.3							
90	102	84.9	42.5	4.42	40.3	81.3	97.6	81.3	40.8	5.20	43.3	84.7							
95	100	84.4	40.4	5.10	40.6	81.3	96.6	81.4	40.8	5.54	41.8	84.2							
100	97.4	81.1	34.9	6.71	42.3	81.0	95.7	80.9	42.3	7.09	36.2	81.7							
105	94.6	76.0	31.4	9.34	44.1	81.2	95.5	80.9	43.9	9.66	34.2	77.8							
110	91.5	73.0	33.9	12.4	46.7	81.7	95.3	81.3	46.3	12.7	33.0	76.0							
115	90.1	70.4	35.9	15.6	50.2	82.6	95.2	82.1	49.8	15.9	37.4	75.0							
120	89.1	65.7	37.1	18.9	53.3	83.2	96.0	82.8	53.3	19.1	41.3	74.5							
125	89.3	64.5	35.9	22.1	55.1	84.2	95.8	83.8	55.8	22.4	42.0	75.0							
130	90.9	65.6	33.5	25.2	56.2	85.1	95.5	84.7	57.8	25.6	41.7	72.1							
135	89.2	59.5	32.3	28.1	57.9	84.9	94.7	84.5	59.2	28.5	41.9	65.1							
140	83.0	51.6	31.6	30.8	60.7	83.0	92.2	82.8	60.2	31.3	41.5	58.7							
145	76.1	48.2	32.3	33.1	63.0	80.0	87.9	80.3	61.5	33.8	40.1	57.3							
150	69.1	42.1	32.9	35.4	65.3	77.9	82.8	77.8	63.7	36.0	39.2	52.6							
155	64.9	36.7	35.8	42.4	66.6	76.5	78.3	76.1	65.5	42.7	39.6	46.5							
160	61.1	32.7	44.2	49.7	67.6	74.6	75.3	73.9	67.0	50.1	46.9	41.9							
165	56.6	31.1	52.4	56.6	69.2	73.9	68.7	72.4	68.9	57.3	54.8	40.6							
170	31.2	41.1	59.7	63.2	70.0	73.9	35.8	72.0	70.0	63.9	61.8	48.2							
175	31.4	54.3	66.6	69.2	71.5	73.3	34.5	71.0	71.1	69.9	68.4	59.1							
180	32.8	66.1	72.2	73.3	73.3	69.4	32.9	66.1	72.4	73.2	73.4	69.2							

C Range: 0 - 360DEG  
C Interval: 30.0DEG  
Test Speed: HIGH  
Temperature:25.3℃  
Operators:  
Test Date:2025-05-13

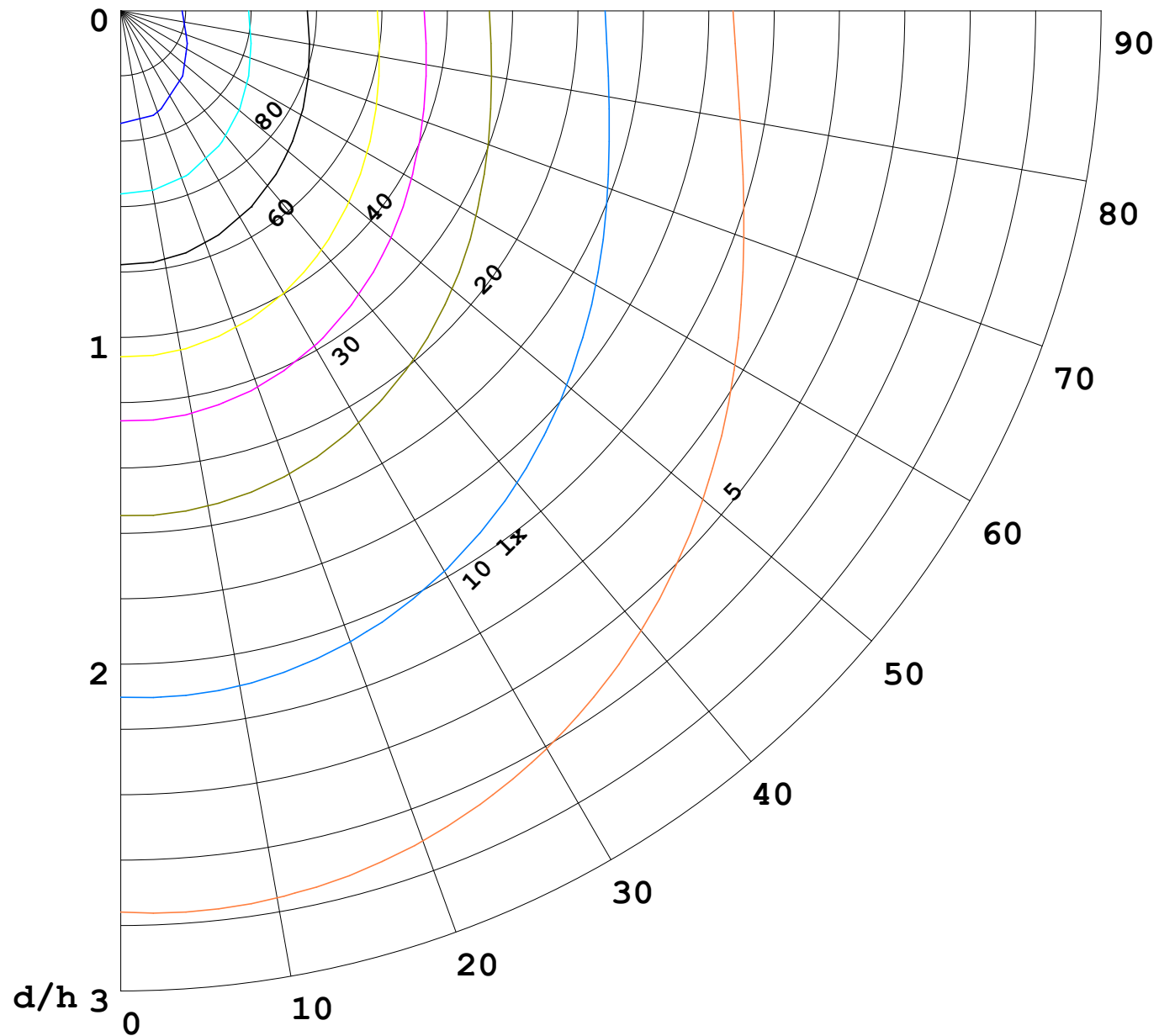
γ Range: 0 - 180DEG  
γ Interval: 1.0DEG  
Test System:EVERFINE GO-2000B\_V1 SYSTEM V2.00.488  
Humidity:65.0%  
Test Distance:6.360m [K=1.0000]  
Remarks:

I (cd)



1000 lm

$\kappa = 1$



F = 1000 lm  
 K = 0.7  
 Hcc = 0.8 m  
 Hfc = 0.0 m  
 Eave = 100 lx

	Pcc	Pw	Pfc
—————	70	50	30
—————	50	30	20

