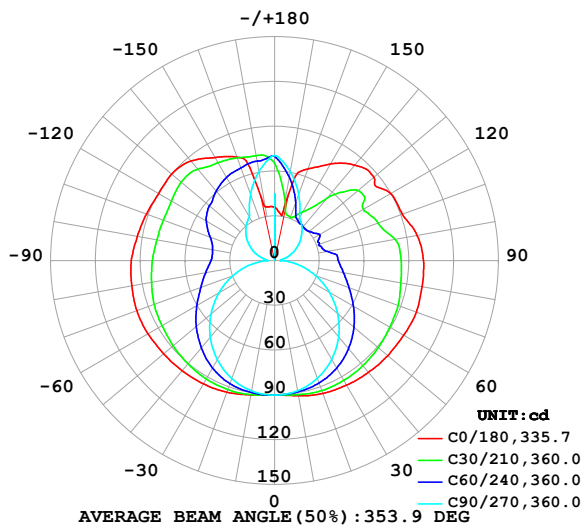


LUMINAIRE PHOTOMETRIC TEST REPORT

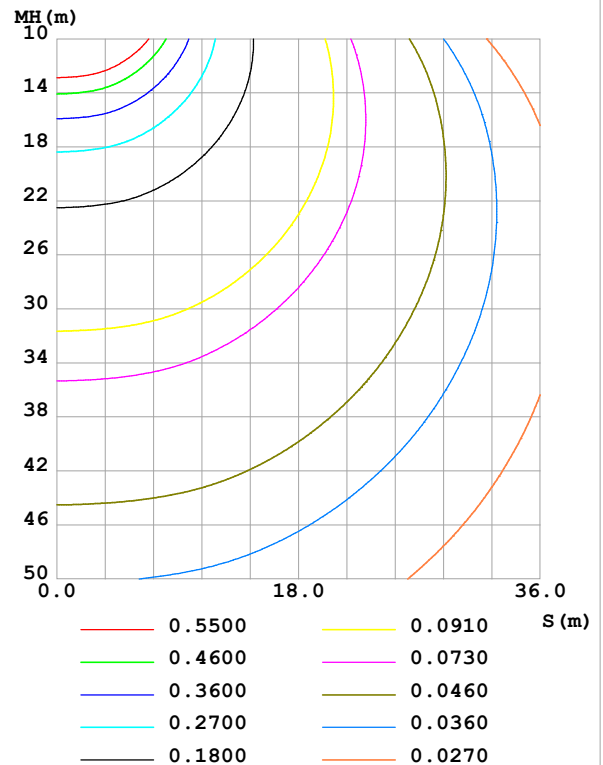
Test:U:24.00V I:0.6763A P:16.23W PF:1.000 Freq:0Hz Lamp Flux:820.607x1 lm		
NAME: SF24-24V-2835-288-U2-3500K	TYPE:	WEIGHT:
SPEC.:	DIM.: Length=1m	SERIAL No.:
MFR.: OLympia lighting	SUR.:	Shielding Angle:

DATA OF LAMP		PHOTOMETRIC DATA Eff: 50.56 lm/W			
MODEL	2835	I _{max} (cd)	101.0	S/MH(C0/180)	1.63
NOMINAL POWER(W)	16	LOR(%)	100.0	S/MH(C90/270)	1.27
RATED VOLTAGE(V)	24	TOTAL FLUX(lm)	820.61	η UP,DN(C0-180)	21.4,28.2
NOMINAL FLUX(lm)	820.607	CIE CLASS	DIFFUSE	η UP,DN(C180-360)	22.3,28.2
LAMPS INSIDE	1	η up (%)	43.6	CIBSE SHR NOM	1.75
TEST VOLTAGE(V)		η down (%)	56.4	CIBSE SHR MAX	1.75

LUMINOUS INTENSITY DISTRIBUTION DIAGRAM



C0 PLANE ISOLUX DIAGRAM (UNIT:lx)



C Range: 0 - 360DEG
C Interval: 30.0DEG
Test Speed: HIGH
Temperature:25.3℃
Operators:
Test Date:2025-03-03

γ Range: 0 - 180DEG
γ Interval: 1.0DEG
Test System:EVERFINE GO-2000B_V1 SYSTEM V2.00.488
Humidity:65.0%
Test Distance:6.360m [K=1.0000]
Remarks:

ZONAL FLUX DIAGRAM

ZONAL FLUX DIAGRAM:

γ	C0	C45	C90	C135	C180	C225	C270	C315	γ	Φ zone	Φ total	%lum, lamp
10	91.93	90.30	88.59	90.58	91.47	90.50	88.69	90.04	0- 10	8.615	8.615	1.05,1.05
20	94.65	90.00	83.91	89.84	93.88	89.89	84.13	89.48	10- 20	25.53	34.14	4.16,4.16
30	96.38	87.96	76.51	86.99	95.42	87.42	76.73	87.22	20- 30	40.91	75.05	9.15,9.15
40	97.82	84.54	66.79	82.56	96.37	83.38	67.05	83.52	30- 40	53.43	128.5	15.7,15.7
50	99.03	80.10	55.16	77.33	97.10	78.72	55.65	78.81	40- 50	62.40	190.9	23.3,23.3
60	99.94	75.09	42.33	71.64	98.03	73.69	43.02	73.69	50- 60	67.60	258.5	31.5,31.5
70	101.0	70.63	29.03	66.65	98.20	69.30	29.82	69.07	60- 70	69.55	328.0	40,40
80	100.3	66.47	15.83	62.30	97.22	65.41	16.54	65.10	70- 80	68.71	396.7	48.3,48.3
90	99.79	63.82	3.983	59.09	96.02	62.40	5.042	62.42	80- 90	65.78	462.5	56.4,56.4
100	97.04	58.99	5.528	57.94	93.44	61.22	7.256	58.07	90-100	62.86	525.4	64,64
110	91.12	52.88	11.08	59.69	91.37	62.71	13.23	53.69	100-110	58.90	584.3	71.2,71.2
120	89.96	51.94	17.05	63.51	89.81	66.41	19.04	56.32	110-120	56.00	640.3	78,78
130	86.93	51.75	23.01	66.88	90.14	69.44	24.85	55.17	120-130	52.58	692.9	84.4,84.4
140	83.62	42.24	28.66	68.27	87.20	70.51	29.91	50.64	130-140	45.63	738.5	90,90
150	74.79	34.41	33.47	68.76	79.77	70.14	34.04	42.93	140-150	35.23	773.7	94.3,94.3
160	65.29	36.18	47.38	69.33	73.88	69.74	47.29	42.17	150-160	25.34	799.1	97.4,97.4
170	32.97	48.82	60.62	69.95	36.70	69.59	60.68	51.41	160-170	15.97	815.0	99.3,99.3
180	35.97	67.52	70.50	68.71	36.09	67.58	70.47	68.56	170-180	5.580	820.6	100,100
DEG	LUMINOUS INTENSITY:cd									UNIT:lm		

Conical surface Flux(90deg): 158.79 lm

%lum = 19.4%

%lamp = 19.4%

Conical surface Flux(130deg): 293.19 lm

%lum = 35.7%

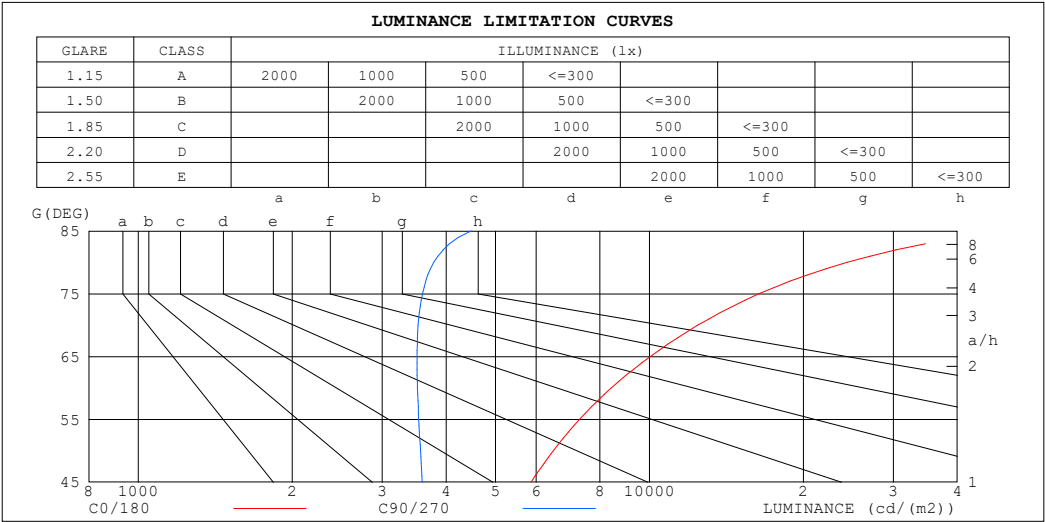
%lamp = 35.7%

C Range: 0 - 360DEG
 C Interval: 30.0DEG
 Test Speed: HIGH
 Temperature:25.3℃
 Operators:
 Test Date:2025-03-03

γ Range: 0 - 180DEG
 γ Interval: 1.0DEG
 Test System:EVERFINE GO-2000B_V1 SYSTEM V2.00.488
 Humidity:65.0%
 Test Distance:6.360m [K=1.0000]
 Remarks:

LUMINANCE LIMITATION CURVES

Test:U:24.00V I:0.6763A P:16.23W PF:1.000 Freq:0Hz Lamp Flux:820.607x1 lm		
NAME: SF24-24V-2835-288-U2-3500K	TYPE:	WEIGHT:
SPEC.:	DIM.: Length=1m	SERIAL No.:
MFR.: OLympia lighting	SUR.:	Shielding Angle:



LUMINANCE cd/(m2)		
G (DEG)	C0/180	C90/270
85	48390	4476
80	24333	3786
75	16382	3597
70	12439	3525
65	10037	3508
60	8417	3516
55	7298	3536
50	6488	3564
45	5866	3592

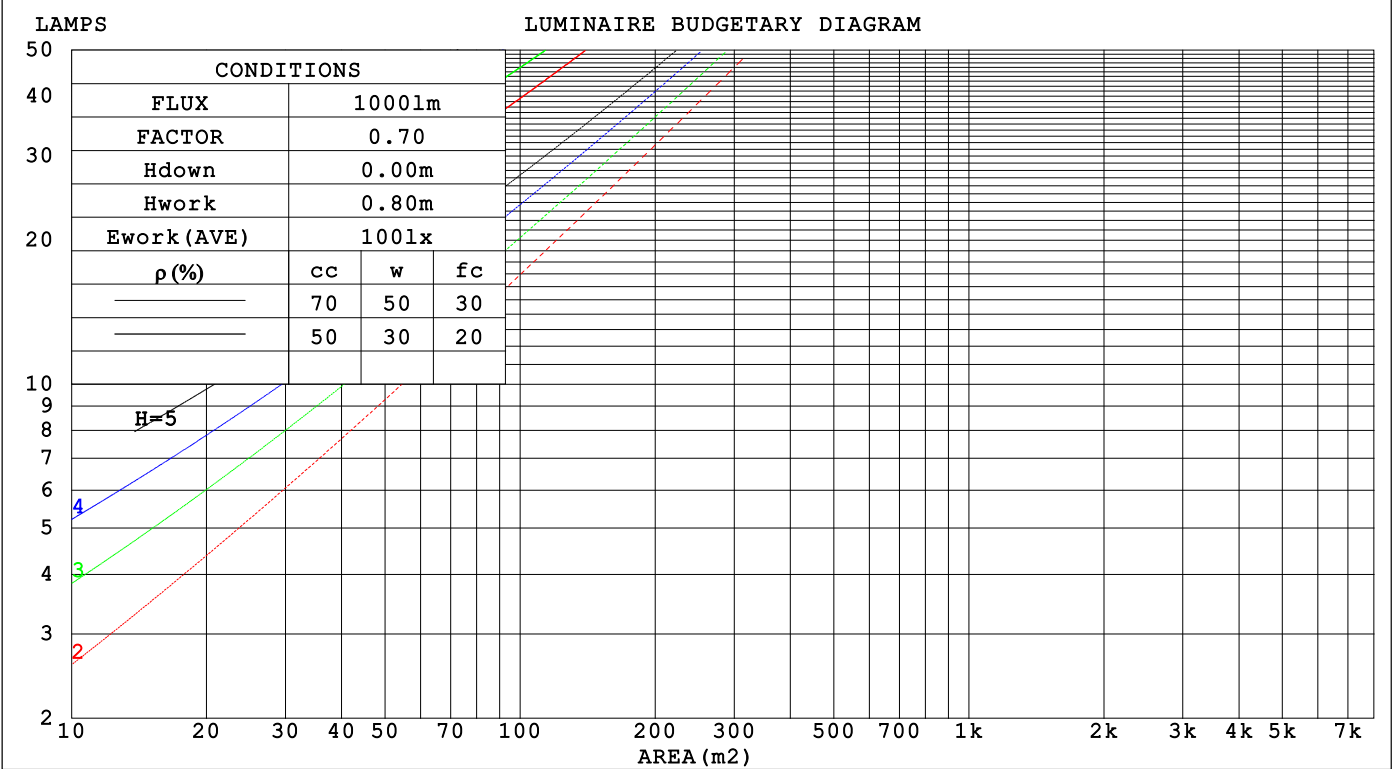
C Range: 0 - 360DEG
C Interval: 30.0DEG
Test Speed: HIGH
Temperature:25.3℃
Operators:
Test Date:2025-03-03

γ Range: 0 - 180DEG
γ Interval: 1.0DEG
Test System:EVERFINE GO-2000B_V1 SYSTEM V2.00.488
Humidity:65.0%
Test Distance:6.360m [K=1.0000]
Remarks:

CU AND LUMINAIRE BUDGETARY ESTIMATE DIAGRAM

Test:U:24.00V I:0.6763A P:16.23W PF:1.000 Freq:0Hz Lamp Flux:820.607x1 lm		
NAME: SF24-24V-2835-288-U2-3500K	TYPE:	WEIGHT:
SPEC.:	DIM.: Length=1m	SERIAL No.:
MFR.: OLYMPIA lighting	SUR.:	Shielding Angle:

pcc	80%			70%			50%			30%			10%			0
pw	50%	30%	10%	50%	30%	10%	50%	30%	10%	50%	30%	10%	50%	30%	10%	0
pfc	20%			20%			20%			20%			20%			0
RCR	RCR:Room Cavity Ratio															



C Range: 0 - 360DEG
C Interval: 30.0DEG
Test Speed: HIGH
Temperature:25.3℃
Operators:
Test Date:2025-03-03

γ Range: 0 - 180DEG
γ Interval: 1.0DEG
Test System:EVERFINE GO-2000B_V1 SYSTEM V2.00.488
Humidity:65.0%
Test Distance:6.360m [K=1.0000]
Remarks:

WEC AND CCEC

Test:U:24.00V I:0.6763A P:16.23W PF:1.000 Freq:0Hz Lamp Flux:820.607x1 lm		
NAME: SF24-24V-2835-288-U2-3500K	TYPE:	WEIGHT:
SPEC.:	DIM.: Length=1m	SERIAL No.:
MFR.: OLympia lighting	SUR.:	Shielding Angle:

pcc	80%			70%			50%			30%			10%			0														
pw	50%	30%	10%	50%	30%	10%	50%	30%	10%	50%	30%	10%	50%	30%	10%	0														
pfc	20%			20%			20%			20%			20%			0														
RCR	RCR:Room Cavity Ratio															Wall Exitance Coefficients(WEC)														
0.0																														
1.0	.387	.220	.070	.366	.209	.066	.328	.188	.060	.293	.169	.054	.260	.151	.049															
2.0	.329	.180	.055	.310	.171	.053	.275	.153	.048	.243	.136	.043	.213	.120	.038															
3.0	.289	.154	.046	.273	.146	.044	.241	.130	.040	.211	.116	.035	.184	.102	.031															
4.0	.259	.135	.040	.244	.128	.038	.215	.114	.034	.187	.101	.030	.162	.088	.027															
5.0	.235	.120	.035	.221	.113	.033	.194	.101	.030	.169	.089	.027	.146	.078	.023															
6.0	.215	.108	.031	.202	.102	.029	.177	.091	.026	.154	.080	.024	.132	.070	.021															
7.0	.198	.098	.028	.186	.093	.026	.163	.082	.024	.142	.073	.021	.122	.063	.019															
8.0	.184	.090	.025	.172	.085	.024	.151	.076	.022	.131	.066	.019	.112	.058	.017															
9.0	.171	.083	.023	.161	.078	.022	.141	.070	.020	.122	.061	.018	.105	.053	.015															
10.0	.160	.077	.021	.150	.073	.020	.132	.065	.018	.114	.057	.016	.098	.049	.014															

pcc	80%			70%			50%			30%			10%			0
pw	50%	30%	10%	50%	30%	10%	50%	30%	10%	50%	30%	10%	50%	30%	10%	0
pfc	20%			20%			20%			20%			20%			0
RCR	RCR:Room Cavity Ratio						Ceiling Cavity Exitance Coefficients (CCEC)									
0.0	.523	.523	.523	.447	.447	.447	.305	.305	.305	.175	.175	.175	.056	.056	.056	
1.0	.521	.491	.463	.446	.421	.399	.305	.290	.276	.175	.168	.160	.056	.054	.052	
2.0	.515	.469	.431	.441	.404	.373	.302	.279	.260	.174	.163	.152	.056	.053	.050	
3.0	.508	.454	.411	.435	.391	.356	.299	.272	.250	.173	.159	.147	.055	.052	.048	
4.0	.500	.442	.398	.429	.382	.345	.295	.266	.243	.171	.156	.144	.055	.051	.047	
5.0	.493	.433	.388	.423	.374	.338	.292	.262	.239	.169	.154	.142	.054	.050	.047	
6.0	.486	.425	.382	.418	.368	.333	.288	.258	.235	.167	.152	.140	.054	.050	.046	
7.0	.479	.419	.377	.412	.363	.329	.285	.255	.233	.165	.150	.139	.053	.049	.046	
8.0	.473	.414	.373	.407	.359	.326	.281	.252	.231	.164	.149	.138	.053	.049	.046	
9.0	.467	.409	.371	.402	.355	.323	.279	.250	.230	.162	.147	.137	.053	.048	.045	
10.0	.461	.405	.368	.397	.352	.321	.276	.248	.228	.161	.146	.136	.052	.048	.045	

C Range: 0 - 360DEG
C Interval: 30.0DEG
Test Speed: HIGH
Temperature:25.3℃
Operators:
Test Date:2025-03-03

γ Range: 0 - 180DEG
γ Interval: 1.0DEG
Test System:EVERFINE GO-2000B_V1 SYSTEM V2.00.488
Humidity:65.0%
Test Distance:6.360m [K=1.0000]
Remarks:

UGR(Unified Glare Rating) Table

Test:U:24.00V I:0.6763A P:16.23W PF:1.000 Freq:0Hz Lamp Flux:820.607x1 lm										
NAME: SF24-24V-2835-288-U2-3500K					TYPE:			WEIGHT:		
SPEC.:					DIM.: Length=1m			SERIAL No.:		
MFR.: OLympia lighting					SUR.:			Shielding Angle:		
ceiling/cavity	0.7	0.7	0.5	0.5	0.3	0.7	0.7	0.5	0.5	0.3
walls	0.5	0.3	0.5	0.3	0.3	0.5	0.3	0.5	0.3	0.3
working plane	0.2	0.2	0.2	0.2	0.2	0.2	0.2	0.2	0.2	0.2
Room dimensions	Viewed crosswise					Viewed endwise				
x = 2H y = 2H	19.3	20.4	20.1	21.3	22.3	15.8	17.0	16.6	17.8	18.8
3H	22.6	23.6	23.5	24.5	25.6	17.6	18.6	18.5	19.5	20.6
4H	24.5	25.5	25.3	26.3	27.4	18.5	19.4	19.3	20.3	21.4
6H	26.6	27.5	27.4	28.3	29.5	19.2	20.1	20.1	21.0	22.1
8H	27.7	28.6	28.6	29.5	30.6	19.5	20.4	20.4	21.3	22.4
12H	29.1	29.9	30.0	30.8	31.9	19.8	20.6	20.6	21.5	22.6
4H 2H	19.8	20.8	20.7	21.7	22.7	17.5	18.4	18.3	19.3	20.4
3H	23.4	24.2	24.3	25.1	26.3	19.5	20.3	20.4	21.2	22.4
4H	25.5	26.2	26.4	27.1	28.3	20.5	21.3	21.4	22.2	23.4
6H	27.8	28.4	28.7	29.4	30.5	21.5	22.2	22.4	23.1	24.3
8H	29.0	29.7	30.0	30.6	31.8	21.9	22.5	22.8	23.5	24.7
12H	30.5	31.1	31.5	32.0	33.3	22.3	22.8	23.2	23.8	25.0
8H 4H	25.8	26.4	26.7	27.4	28.6	22.1	22.8	23.1	23.7	24.9
6H	28.4	29.0	29.4	29.9	31.1	23.5	24.0	24.4	25.0	26.2
8H	29.9	30.4	30.9	31.4	32.6	24.2	24.6	25.1	25.6	26.8
12H	31.7	32.1	32.6	33.1	34.3	24.8	25.2	25.7	26.2	27.4
12H 4H	25.8	26.4	26.7	27.3	28.6	22.7	23.3	23.7	24.3	25.5
6H	28.5	29.0	29.5	30.0	31.2	24.4	24.8	25.3	25.8	27.1
8H	30.2	30.6	31.1	31.6	32.8	25.2	25.6	26.2	26.6	27.9
Variations with the observer position at spacings(CIE Pub.117):										
S = 1.0H	+ 0.1 / - 0.1					+ 0.1 / - 0.1				
1.5H	+ 0.2 / - 0.3					+ 0.2 / - 0.2				
2.0H	+ 0.3 / - 0.4					+ 0.3 / - 0.4				

CIE Pub.117, 820.6 lm Total Lamp Luminous Flux Correct (8log(F/F0) = -0.7)
Area: 0.024 m2

C Range: 0 - 360DEG
C Interval: 30.0DEG
Test Speed: HIGH
Temperature:25.3℃
Operators:
Test Date:2025-03-03

γ Range: 0 - 180DEG
γ Interval: 1.0DEG
Test System:EVERFINE GO-2000B_V1 SYSTEM V2.00.488
Humidity:65.0%
Test Distance:6.360m [K=1.0000]
Remarks:

UTILIZATION FACTORS TABLE

Test:U:24.00V I:0.6763A P:16.23W PF:1.000 Freq:0Hz Lamp Flux:820.607x1 lm		
NAME: SF24-24V-2835-288-U2-3500K	TYPE:	WEIGHT:
SPEC.:	DIM.: Length=1m	SERIAL No.:
MFR.: OLympia lighting	SUR.:	Shielding Angle:

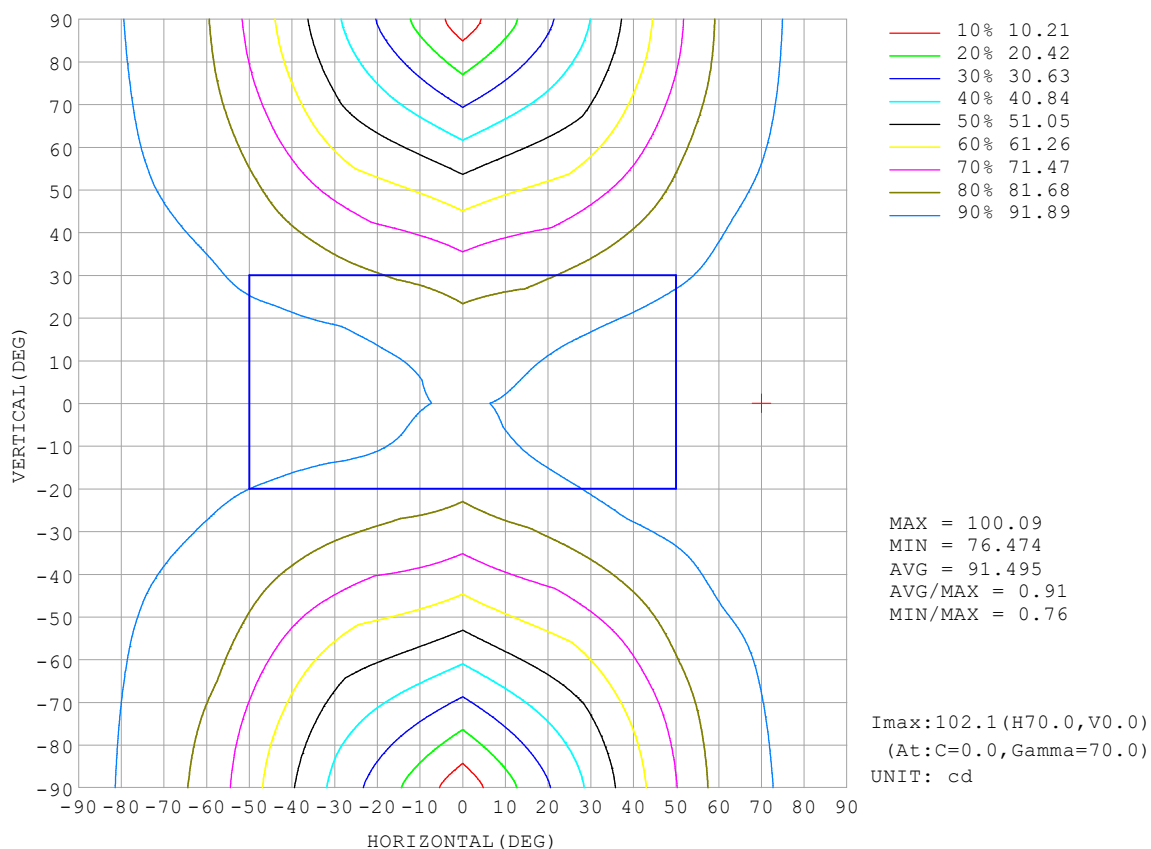
REFLECTANCE										
Ceiling	0.8	0.8	0.8	0.7	0.7	0.7	0.5	0.5	0.5	0
Walls	0.7	0.5	0.3	0.7	0.5	0.3	0.7	0.5	0.3	0
Working plane	0.2	0.2	0.2	0.2	0.2	0.2	0.2	0.2	0.2	0
ROOM INDEX	UTILIZATION FACTORS (PERCENT) $k(RI) \times RCR = 5$									
$k = 0.60$	40	27	20	38	26	20	34	24	19	11
0.80	48	35	27	46	34	26	41	31	24	15
1.00	56	42	34	53	40	32	47	38	30	19
1.25	63	49	40	59	47	38	52	42	35	22
1.50	68	55	46	63	52	44	55	46	39	25
2.00	75	63	54	70	60	52	61	53	46	29
2.50	80	69	60	75	65	57	65	57	51	32
3.00	84	74	66	78	69	62	68	61	55	35
4.00	89	80	73	83	75	69	71	65	60	38
5.00	92	85	78	86	79	73	74	69	64	41
ROOM INDEX	UF (total)									Direct
According to DIN EN 13032-2 2004			Suspended					SHRNOM = 1.25		

C Range: 0 - 360DEG
 C Interval: 30.0DEG
 Test Speed: HIGH
 Temperature: 25.3°C
 Operators:
 Test Date: 2025-03-03

γ Range: 0 - 180DEG
 γ Interval: 1.0DEG
 Test System: EVERFINE GO-2000B_V1 SYSTEM V2.00.488
 Humidity: 65.0%
 Test Distance: 6.360m [K=1.0000]
 Remarks:

ISOCANDELA DIAGRAM

Test:U:24.00V I:0.6763A P:16.23W PF:1.000 Freq:0Hz Lamp Flux:820.607x1 lm		
NAME: SF24-24V-2835-288-U2-3500K	TYPE:	WEIGHT:
SPEC.:	DIM.: Length=1m	SERIAL No.:
MFR.: OLympia lighting	SUR.:	Shielding Angle:

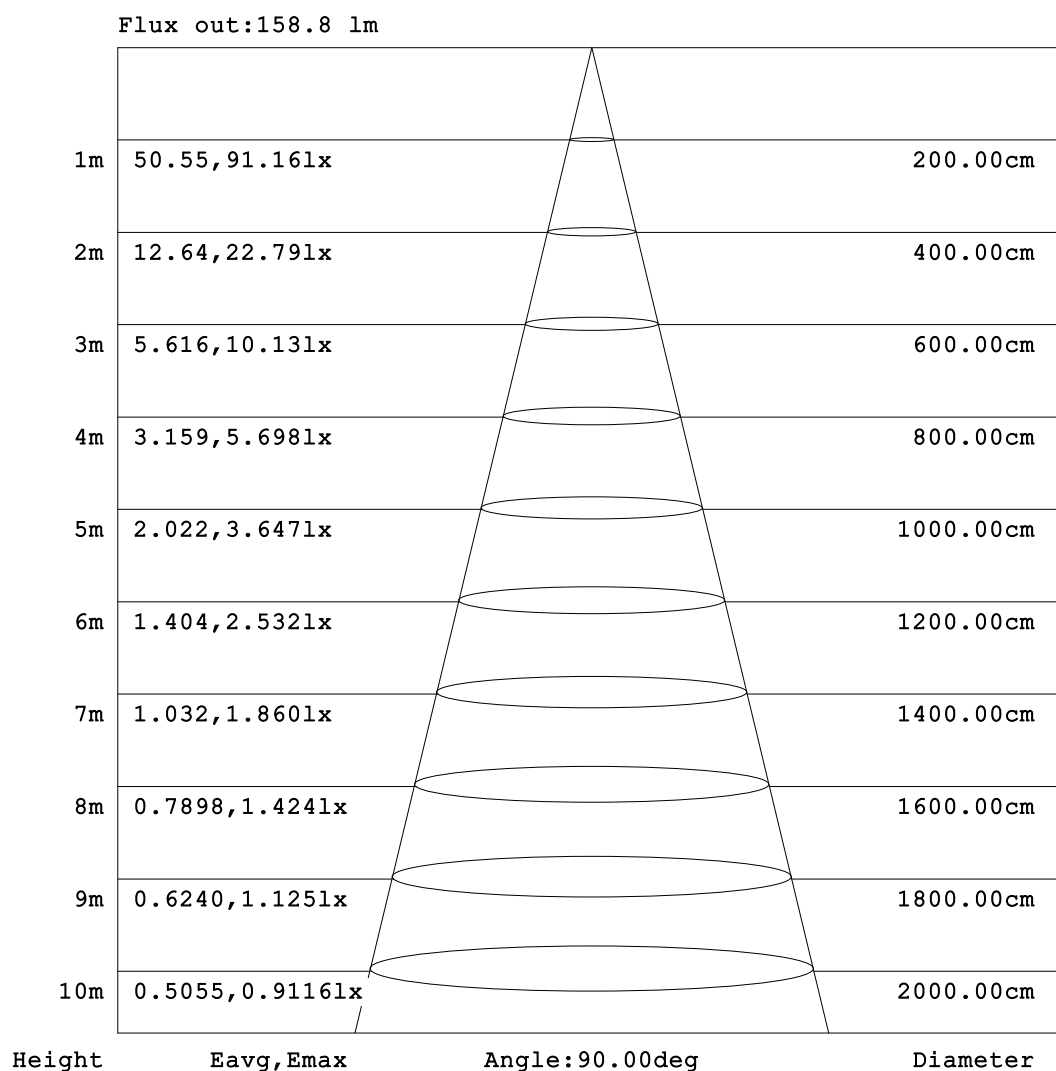


C Range: 0 - 360DEG
C Interval: 30.0DEG
Test Speed: HIGH
Temperature:25.3℃
Operators:
Test Date:2025-03-03

γ Range: 0 - 180DEG
γ Interval: 1.0DEG
Test System:EVERFINE GO-2000B_V1 SYSTEM V2.00.488
Humidity:65.0%
Test Distance:6.360m [K=1.0000]
Remarks:

AAI Figure

Test:U:24.00V I:0.6763A P:16.23W PF:1.000 Freq:0Hz Lamp Flux:820.607x1 lm		
NAME: SF24-24V-2835-288-U2-3500K	TYPE:	WEIGHT:
SPEC.:	DIM.: Length=1m	SERIAL No.:
MFR.: OLympia lighting	SUR.:	Shielding Angle:



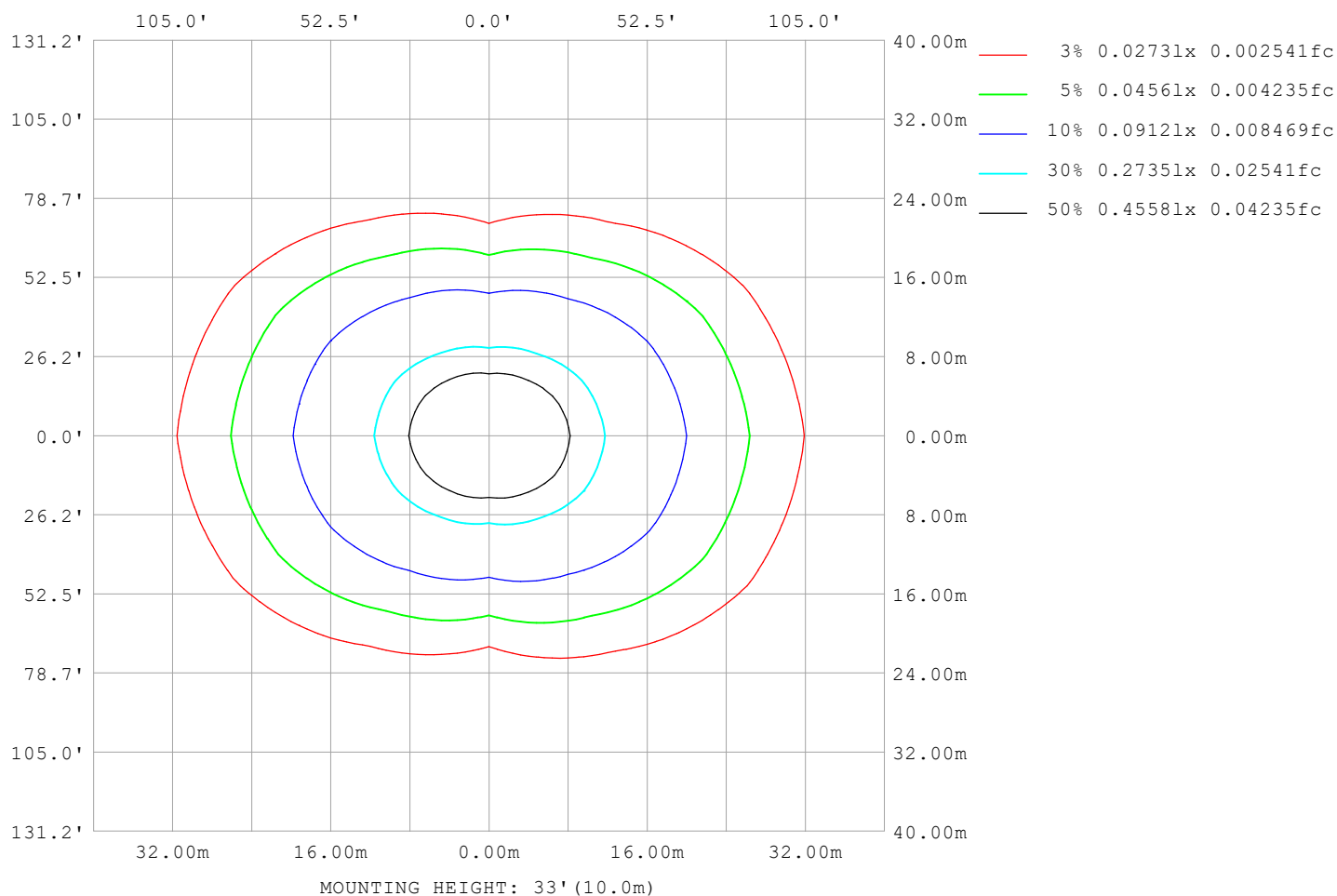
Note: The Curves indicate the illuminated area and the average illumination when the luminaire is at different distance.

C Range: 0 - 360DEG
C Interval: 30.0DEG
Test Speed: HIGH
Temperature: 25.3°C
Operators:
Test Date: 2025-03-03

γ Range: 0 - 180DEG
γ Interval: 1.0DEG
Test System: EVERFINE GO-2000B_V1 SYSTEM V2.00.488
Humidity: 65.0%
Test Distance: 6.360m [K=1.0000]
Remarks:

ISOLUX DIAGRAM

Test:U:24.00V I:0.6763A P:16.23W PF:1.000 Freq:0Hz Lamp Flux:820.607x1 lm		
NAME: SF24-24V-2835-288-U2-3500K	TYPE:	WEIGHT:
SPEC.:	DIM.: Length=1m	SERIAL No.:
MFR.: OLympia lighting	SUR.:	Shielding Angle:



C Range: 0 - 360DEG
C Interval: 30.0DEG
Test Speed: HIGH
Temperature: 25.3°C
Operators:
Test Date: 2025-03-03

γ Range: 0 - 180DEG
γ Interval: 1.0DEG
Test System: EVERFINE GO-2000B_V1 SYSTEM V2.00.488
Humidity: 65.0%
Test Distance: 6.360m [K=1.0000]
Remarks:

LED Avg.L Report

Test:U:24.00V I:0.6763A P:16.23W PF:1.000 Freq:0Hz Lamp Flux:820.607x1 lm		
NAME: SF24-24V-2835-288-U2-3500K	TYPE:	WEIGHT:
SPEC.:	DIM.: Length=1m	SERIAL No.:
MFR.: OLympia lighting	SUR.:	Shielding Angle:

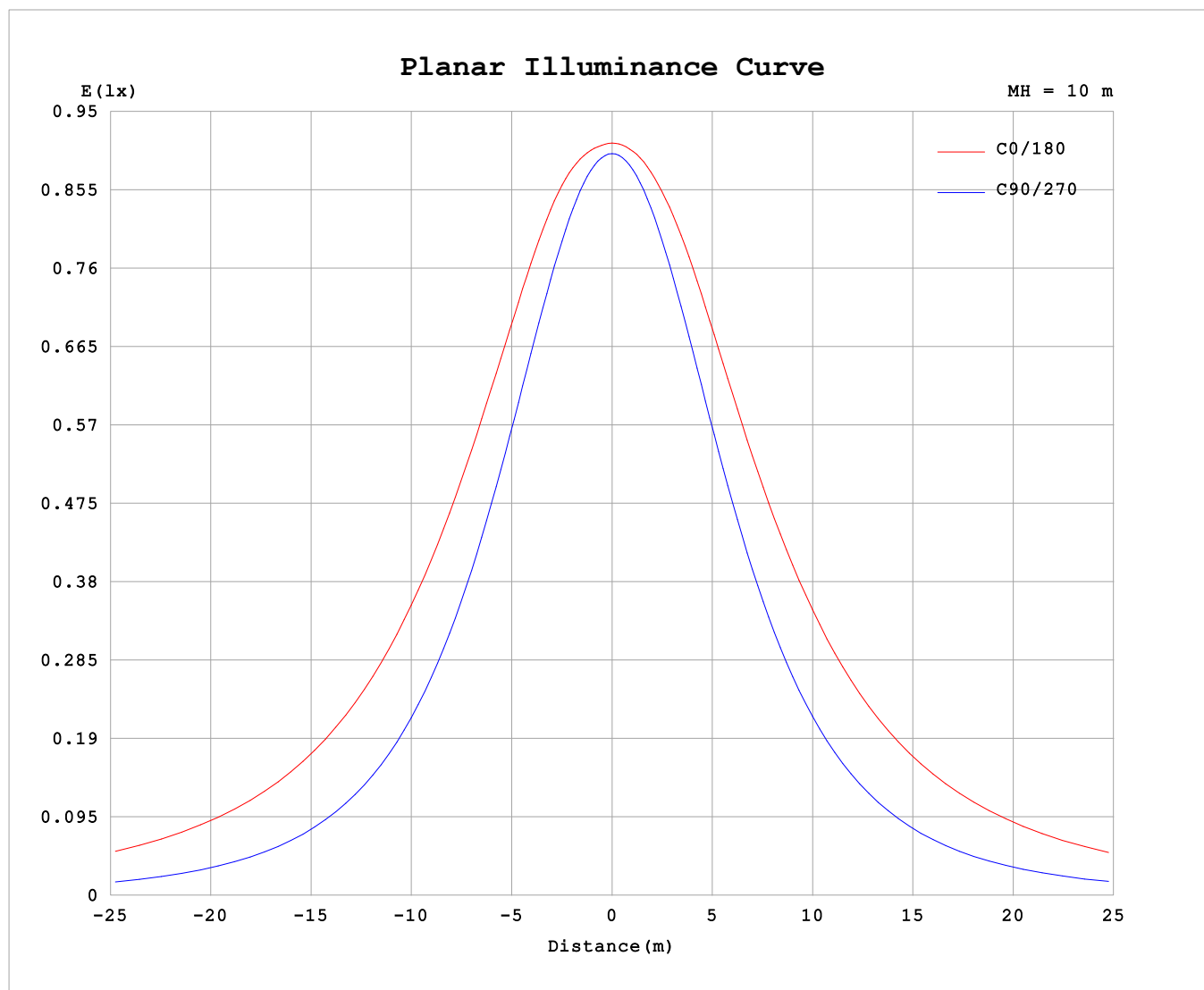
AvgL	cd/m2
L_0~180 (65) av	9814
L_0~180 (75) av	15975
L_0~180 (85) av	47056
L_90~270 (65) av	3558
L_90~270 (75) av	3668
L_90~270 (85) av	4647
L_45 (65) av	7051
L_45 (75) av	10865
L_45 (85) av	30722

Standard: GB/T 29293-2012

C Range: 0 - 360DEG
C Interval: 30.0DEG
Test Speed: HIGH
Temperature:25.3℃
Operators:
Test Date:2025-03-03

γ Range: 0 - 180DEG
γ Interval: 1.0DEG
Test System:EVERFINE GO-2000B_V1 SYSTEM V2.00.488
Humidity:65.0%
Test Distance:6.360m [K=1.0000]
Remarks:

Planar Illuminance Curve



C Range: 0 - 360DEG
C Interval: 30.0DEG
Test Speed: HIGH
Temperature: 25.3 °C
Operators:
Test Date: 2025-03-03

γ Range: 0 - 180DEG
 γ Interval: 1.0DEG
Test System: EVERFINE GO-2000B_V1 SYSTEM V2.00.488
Humidity: 65.0%
Test Distance: 6.360m [K=1.0000]
Remarks:

LUMINOUS DISTRIBUTION INTENSITY DATA

Test:U:24.00V I:0.6763A P:16.23W PF:1.000 Freq:0Hz Lamp Flux:820.607x1 lm																	
NAME: SF24-24V-2835-288-U2-3500K									TYPE:						WEIGHT:		
SPEC.:									DIM.: Length=1m						SERIAL No.:		
MFR.: Olym pia lighting									SUR.:						Shielding Angle:		

Table--1

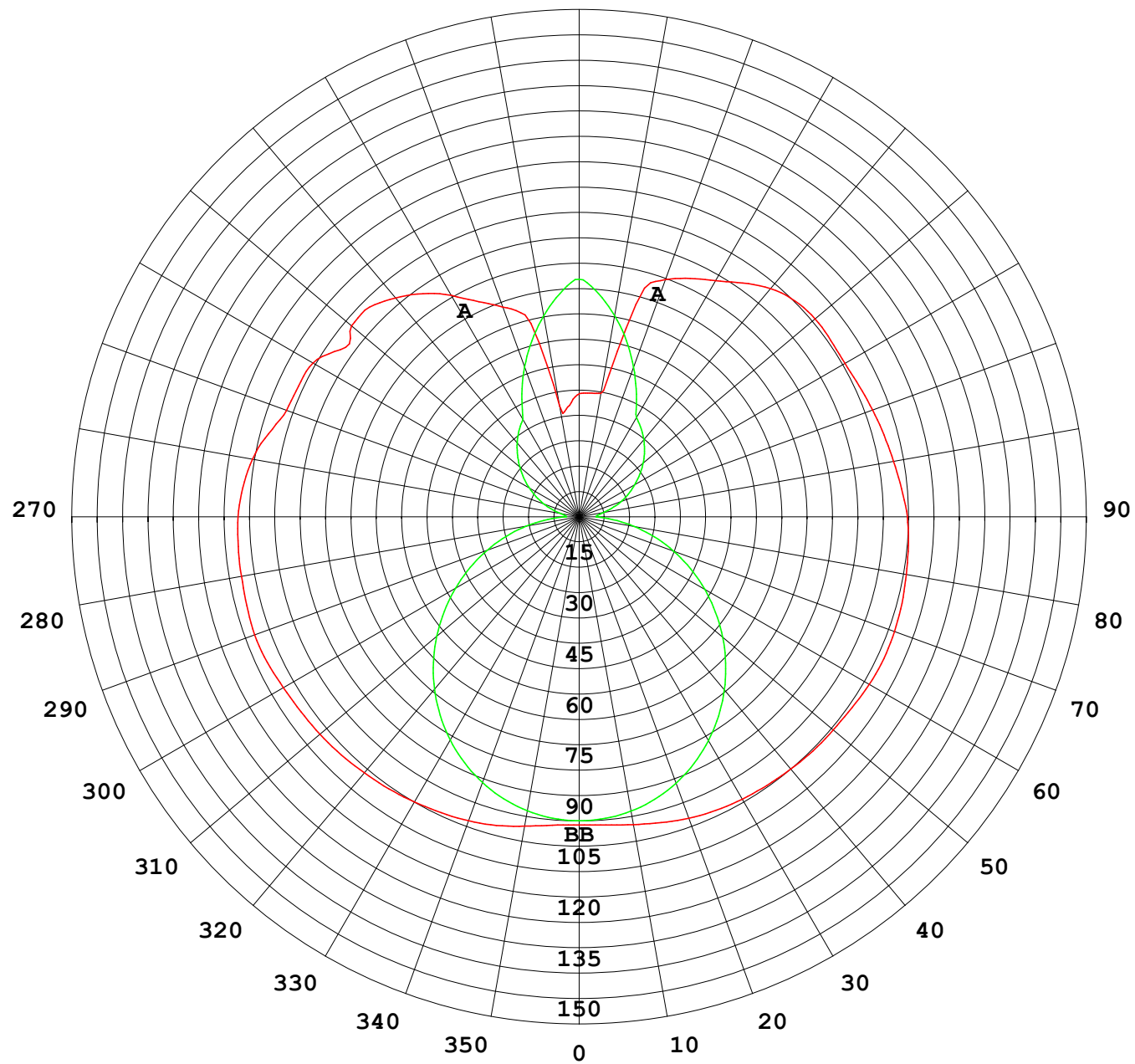
UNIT: cd

C (DEG) γ (DEG)	0	30	60	90	120	150	180	210	240	270	300	330						
0	90.2	90.2	90.2	90.2	90.2	90.2	90.2	90.2	90.2	90.2	90.2	90.2						
5	90.6	90.4	89.9	89.8	90.2	90.7	90.5	90.5	90.1	89.8	89.9	90.2						
10	91.9	91.2	89.4	88.6	89.7	91.5	91.5	91.2	89.8	88.7	89.2	90.9						
15	93.5	92.1	88.6	86.6	88.8	92.2	92.7	91.8	89.1	86.8	88.3	91.6						
20	94.7	92.7	87.3	83.9	87.3	92.4	93.9	92.0	87.8	84.1	86.8	92.2						
25	95.6	92.8	85.5	80.5	85.2	92.1	94.8	91.9	85.8	80.8	84.8	92.2						
30	96.4	92.7	83.2	76.5	82.5	91.5	95.4	91.6	83.2	76.7	82.4	92.0						
35	97.2	92.4	80.4	71.9	79.3	90.5	95.9	91.1	80.1	72.2	79.4	91.6						
40	97.8	92.0	77.0	66.8	75.6	89.5	96.4	90.4	76.4	67.1	76.0	91.1						
45	98.5	91.4	73.4	61.2	71.5	88.5	96.8	89.6	72.5	61.5	72.1	90.3						
50	99.0	90.7	69.4	55.2	67.1	87.6	97.1	88.8	68.6	55.7	68.1	89.5						
55	99.4	89.9	65.2	48.8	62.4	86.5	97.5	87.8	64.4	49.4	63.9	88.7						
60	99.9	89.1	61.0	42.3	57.8	85.5	98.0	87.1	60.2	43.0	59.6	87.8						
65	101	88.6	56.9	35.7	53.4	84.7	98.4	86.7	56.2	36.5	55.3	87.2						
70	101	88.0	53.1	29.0	49.4	83.9	98.2	85.9	52.6	29.8	51.4	86.7						
75	101	86.9	49.8	22.4	46.0	82.8	97.8	84.9	49.7	23.2	48.1	85.9						
80	100	85.9	46.9	15.8	43.1	81.5	97.2	83.7	47.0	16.5	45.4	84.8						
85	100	85.3	44.5	9.39	40.6	80.4	96.7	82.8	44.6	10.0	42.9	84.0						
90	99.8	84.8	42.8	3.98	38.6	79.6	96.0	82.0	42.7	5.04	41.2	83.6						
95	98.8	84.2	42.0	4.17	37.7	78.7	94.7	81.0	41.9	5.58	40.0	83.2						
100	97.0	82.1	35.8	5.53	38.1	77.8	93.4	80.1	42.2	7.26	34.8	81.4						
105	94.1	77.0	33.0	8.13	39.4	77.2	92.4	79.7	43.3	10.0	33.1	77.6						
110	91.1	73.8	31.8	11.1	42.2	77.1	91.4	79.4	45.9	13.2	33.2	74.1						
115	90.6	71.3	32.2	14.0	46.1	77.2	90.5	79.3	49.6	16.1	36.5	71.3						
120	90.0	68.8	35.0	17.1	49.2	77.9	89.8	79.8	52.9	19.0	38.5	74.1						
125	85.3	73.8	32.2	20.1	51.1	79.2	89.9	81.0	55.5	22.0	38.9	74.1						
130	86.9	73.0	30.4	23.0	53.5	80.3	90.1	81.7	57.1	24.8	40.2	70.2						
135	86.8	65.1	29.7	25.9	55.8	80.3	89.4	81.8	58.6	27.5	39.8	66.5						
140	83.6	54.7	29.7	28.7	57.9	78.6	87.2	80.0	60.9	29.9	38.9	62.4						
145	79.7	43.3	30.2	31.2	60.2	76.5	83.5	77.1	62.9	32.1	38.1	55.6						
150	74.8	37.6	31.2	33.5	62.3	75.2	79.8	75.8	64.5	34.0	37.1	48.8						
155	69.5	33.0	33.6	40.3	63.9	74.4	77.0	74.6	65.5	40.2	37.7	44.5						
160	65.3	31.0	41.4	47.4	65.3	73.4	73.9	73.3	66.2	47.3	44.1	40.3						
165	61.2	31.9	49.5	54.2	66.9	72.4	64.4	71.9	67.3	54.2	50.7	38.3						
170	33.0	40.8	56.9	60.6	67.6	72.3	36.7	71.5	67.7	60.7	57.7	45.1						
175	32.8	53.2	63.8	66.5	69.1	71.8	36.4	70.5	68.6	66.5	64.6	55.7						
180	36.0	65.3	69.8	70.5	70.9	66.5	36.1	65.2	69.9	70.5	70.8	66.3						

C Range: 0 - 360DEG
C Interval: 30.0DEG
Test Speed: HIGH
Temperature:25.3℃
Operators:
Test Date:2025-03-03

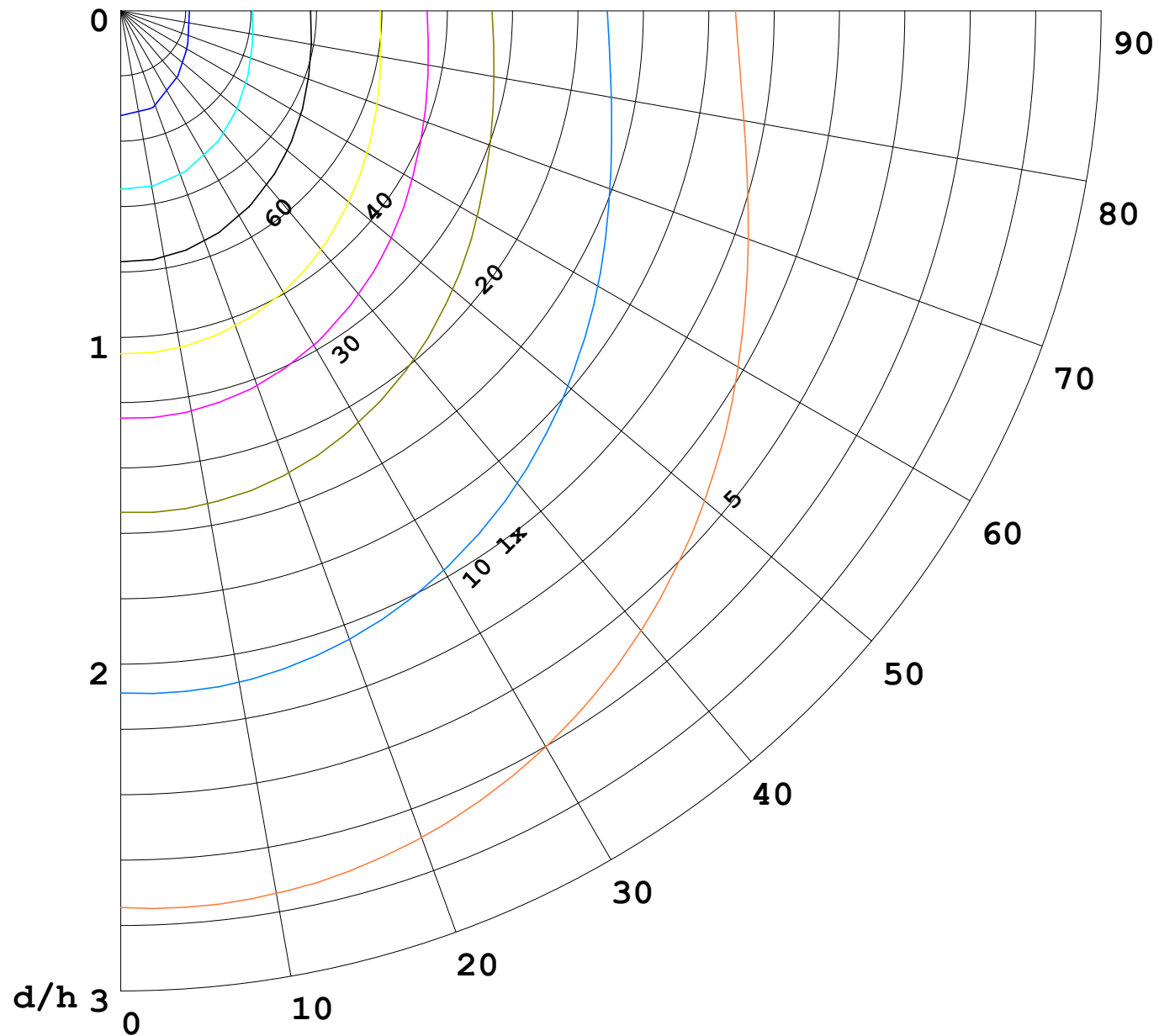
γ Range: 0 - 180DEG
γ Interval: 1.0DEG
Test System:EVERFINE GO-2000B_V1 SYSTEM V2.00.488
Humidity:65.0%
Test Distance:6.360m [K=1.0000]
Remarks:

I (cd)



1000 lm

$\kappa = 1$



F = 1000 lm
 K = 0.7
 Hcc = 0.8 m
 Hfc = 0.0 m
 Eave = 100 lx

	Pcc	Pw	Pfc
—————	70	50	30
—————	50	30	20

