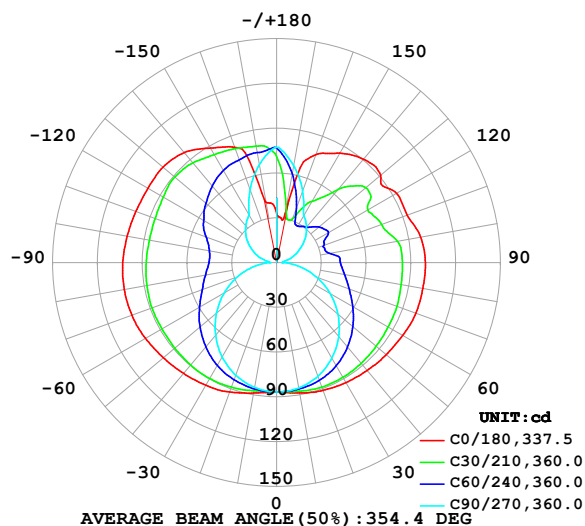


LUMINAIRE PHOTOMETRIC TEST REPORT

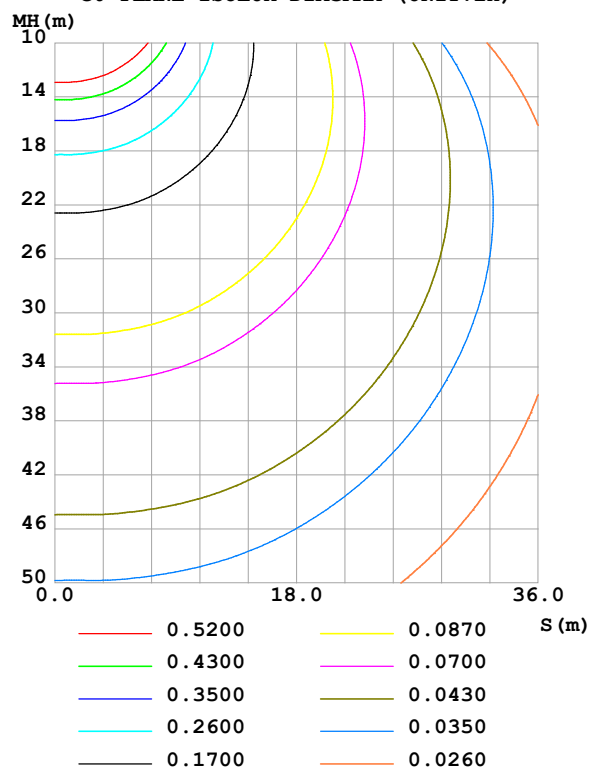
Test:U:24.00V I:0.6801A P:16.32W PF:1.000 Freq:0Hz Lamp Flux:838.713x1 lm		
NAME: SF24-24V-2835-288-U2-2700K	TYPE:	WEIGHT:
SPEC.:	DIM.: Length=1m	SERIAL No.:
MFR.: OLympia lighting	SUR.:	Shielding Angle:

DATA OF LAMP		PHOTOMETRIC DATA Eff: 51.38 lm/W			
MODEL	2835	I _{max} (cd)	103.7	S/MH(C0/180)	1.69
NOMINAL POWER(W)	16	LOR(%)	100.0	S/MH(C90/270)	1.25
RATED VOLTAGE(V)	24	TOTAL FLUX(lm)	838.71	η UP,DN(C0-180)	22.3,27.2
NOMINAL FLUX(lm)	838.713	CIE CLASS	DIFFUSE	η UP,DN(C180-360)	23.3,27.2
LAMPS INSIDE	1	η up(%)	45.6	CIBSE SHR NOM	1.75
TEST VOLTAGE(V)		η down(%)	54.4	CIBSE SHR MAX	1.75

LUMINOUS INTENSITY DISTRIBUTION DIAGRAM



C0 PLANE ISOLUX DIAGRAM (UNIT:lx)



C Range: 0 - 360DEG
C Interval: 30.0DEG
Test Speed: HIGH
Temperature: 25.3 °C
Operators:
Test Date: 2025-03-03

γ Range: 0 - 180DEG
γ Interval: 1.0DEG
Test System: EVERFINE GO-2000B_V1 SYSTEM V2.00.488
Humidity: 65.0%
Test Distance: 6.360m [K=1.0000]
Remarks:

ZONAL FLUX DIAGRAM

ZONAL FLUX DIAGRAM:

γ	C0	C45	C90	C135	C180	C225	C270	C315	γ	Φ zone	Φ total	%lum, lamp
10	88.68	86.80	85.38	86.83	88.76	86.61	84.95	86.29	0- 10	8.279	8.279	0.99,0.99
20	91.14	86.38	81.05	86.41	92.35	86.23	80.30	85.29	10- 20	24.52	32.80	3.91,3.91
30	92.84	84.35	74.04	84.69	94.97	84.68	73.04	82.82	20- 30	39.40	72.20	8.61,8.61
40	94.38	81.07	64.74	81.56	97.01	81.74	63.63	79.16	30- 40	51.72	123.9	14.8,14.8
50	95.97	77.01	53.63	77.42	99.16	78.11	52.60	74.73	40- 50	60.75	184.7	22,22
60	97.60	72.66	41.36	72.91	101.5	74.25	40.51	70.16	50- 60	66.40	251.1	29.9,29.9
70	99.28	68.89	28.49	68.93	103.2	71.05	27.91	66.16	60- 70	69.04	320.1	38.2,38.2
80	99.55	65.56	15.58	65.64	103.7	68.40	15.35	62.96	70- 80	69.10	389.2	46.4,46.4
90	99.70	63.61	3.997	63.28	103.1	66.46	4.644	61.02	80- 90	67.13	456.3	54.4,54.4
100	98.08	59.22	5.417	62.90	101.7	66.25	7.047	57.62	90-100	64.98	521.3	62.2,62.2
110	93.12	54.28	11.47	65.24	100.4	68.50	13.79	54.04	100-110	61.78	583.1	69.5,69.5
120	92.91	55.54	18.04	69.31	99.65	72.16	20.18	58.06	110-120	59.59	642.7	76.6,76.6
130	91.17	57.74	24.91	73.16	99.53	75.58	26.60	58.27	120-130	56.58	699.3	83.4,83.4
140	90.56	47.45	31.27	75.10	96.32	77.22	32.31	53.71	130-140	49.59	748.9	89.3,89.3
150	84.70	37.98	36.48	75.77	88.66	77.54	37.11	45.66	140-150	38.68	787.6	93.9,93.9
160	77.05	35.11	51.18	75.99	82.31	77.35	52.16	44.97	150-160	27.80	815.3	97.2,97.2
170	33.56	48.89	66.07	76.31	41.04	77.07	66.69	55.17	160-170	17.35	832.7	99.3,99.3
180	32.92	73.96	77.35	74.62	33.09	74.02	77.25	74.56	170-180	6.016	838.7	100,100
DEG	LUMINOUS INTENSITY:cd									UNIT:lm		

Conical surface Flux(90deg): 153.38 lm

%lum = 18.3%

%lamp = 18.3%

Conical surface Flux(130deg): 285.42 lm

%lum = 34.0%

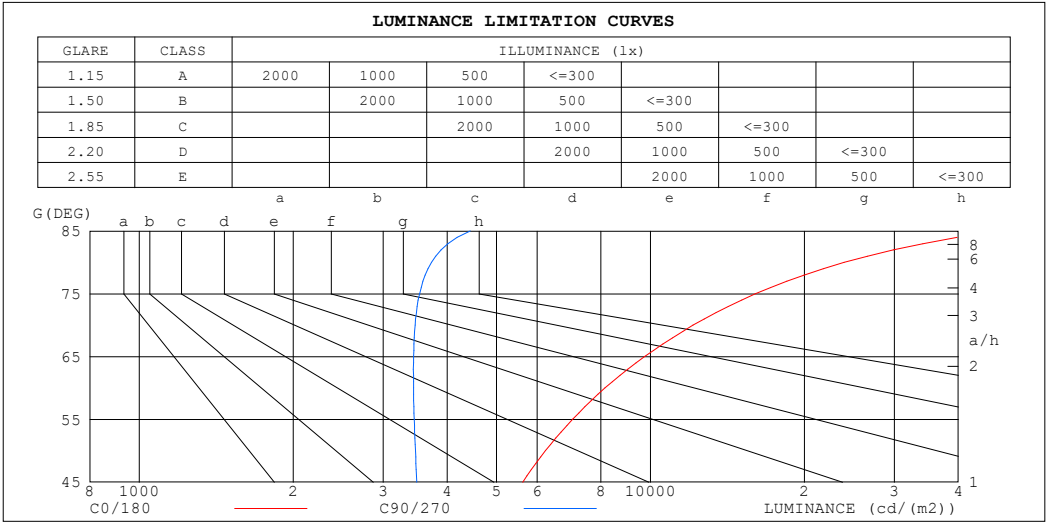
%lamp = 34.0%

C Range: 0 - 360DEG
 C Interval: 30.0DEG
 Test Speed: HIGH
 Temperature:25.3℃
 Operators:
 Test Date:2025-03-03

γ Range: 0 - 180DEG
 γ Interval: 1.0DEG
 Test System:EVERFINE GO-2000B_V1 SYSTEM V2.00.488
 Humidity:65.0%
 Test Distance:6.360m [K=1.0000]
 Remarks:

LUMINANCE LIMITATION CURVES

Test:U:24.00V I:0.6801A P:16.32W PF:1.000 Freq:0Hz Lamp Flux:838.713x1 lm		
NAME: SF24-24V-2835-288-U2-2700K	TYPE:	WEIGHT:
SPEC.:	DIM.: Length=1m	SERIAL No.:
MFR.: OLympia lighting	SUR.:	Shielding Angle:



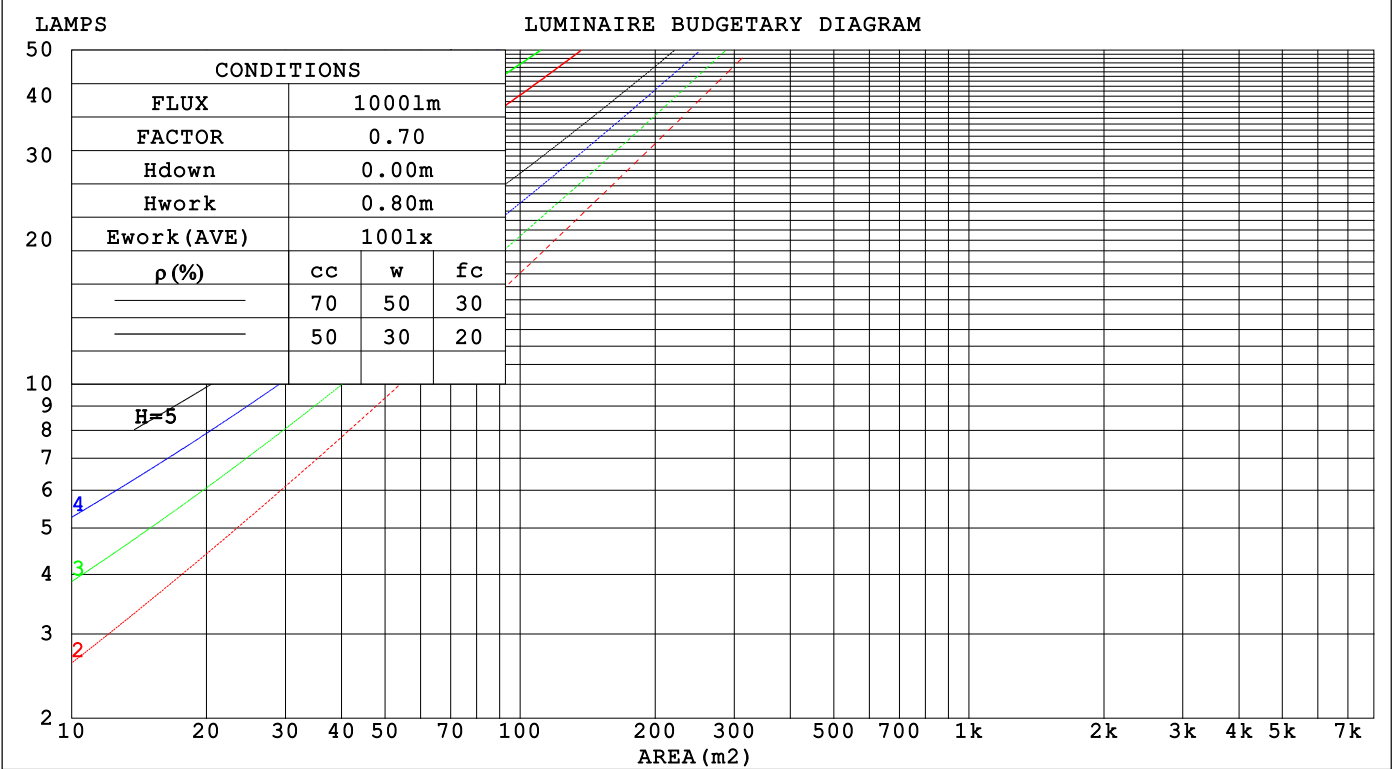
LUMINANCE cd/(m2)		
G (DEG)	C0/180	C90/270
85	47745	4437
80	23938	3728
75	16055	3535
70	12121	3462
65	9744	3440
60	8151	3438
55	7042	3449
50	6234	3468
45	5622	3490

C Range: 0 - 360DEG	γ Range: 0 - 180DEG
C Interval: 30.0DEG	γ Interval: 1.0DEG
Test Speed: HIGH	Test System:EVERFINE GO-2000B_V1 SYSTEM V2.00.488
Temperature:25.3℃	Humidity:65.0%
Operators:	Test Distance:6.360m [K=1.0000]
Test Date:2025-03-03	Remarks:

CU AND LUMINAIRE BUDGETARY ESTIMATE DIAGRAM

Test:U:24.00V I:0.6801A P:16.32W PF:1.000 Freq:0Hz		
Lamp Flux:838.713x1 lm		
NAME: SF24-24V-2835-288-U2-2700K	TYPE:	WEIGHT:
SPEC.:	DIM.: Length=1m	SERIAL No.:
MFR.: OLYMPIA lighting	SUR.:	Shielding Angle:

pcc	80%			70%			50%			30%			10%			0
pw	50%	30%	10%	50%	30%	10%	50%	30%	10%	50%	30%	10%	50%	30%	10%	0
pfc	20%			20%			20%			20%			20%			0
RCR	RCR:Room Cavity Ratio			Coefficients of Utilization(CU)												
0.0	1.08	1.08	1.08	1.00	1.00	1.00	.86	.86	.86	.72	.72	.72	.60	.60	.60	.54
1.0	.89	.84	.79	.82	.77	.73	.70	.66	.63	.58	.55	.53	.47	.45	.43	.38
2.0	.76	.68	.61	.70	.63	.57	.59	.54	.49	.49	.45	.41	.39	.36	.34	.29
3.0	.65	.57	.50	.60	.53	.46	.51	.45	.40	.42	.37	.33	.34	.30	.27	.23
4.0	.57	.48	.41	.53	.45	.38	.45	.38	.33	.37	.32	.28	.30	.26	.23	.19
5.0	.51	.41	.35	.47	.38	.32	.39	.33	.28	.33	.27	.23	.26	.22	.19	.16
6.0	.45	.36	.30	.42	.34	.28	.35	.29	.24	.29	.24	.20	.24	.20	.16	.13
7.0	.40	.32	.26	.37	.30	.24	.32	.25	.21	.26	.21	.17	.22	.17	.14	.12
8.0	.37	.28	.22	.34	.26	.21	.29	.23	.18	.24	.19	.15	.20	.16	.13	.10
9.0	.33	.25	.20	.31	.24	.18	.26	.20	.16	.22	.17	.14	.18	.14	.11	.09
10.0	.30	.23	.18	.28	.21	.16	.24	.18	.14	.20	.16	.12	.17	.13	.10	.08



C Range: 0 - 360DEG
C Interval: 30.0DEG
Test Speed: HIGH
Temperature:25.3℃
Operators:
Test Date:2025-03-03

γ Range: 0 - 180DEG
γ Interval: 1.0DEG
Test System:EVERFINE GO-2000B_V1 SYSTEM V2.00.488
Humidity:65.0%
Test Distance:6.360m [K=1.0000]
Remarks:

WEC AND CCEC

Test:U:24.00V I:0.6801A P:16.32W PF:1.000 Freq:0Hz Lamp Flux:838.713x1 lm		
NAME: SF24-24V-2835-288-U2-2700K	TYPE:	WEIGHT:
SPEC.:	DIM.: Length=1m	SERIAL No.:
MFR.: OLympia lighting	SUR.:	Shielding Angle:

pcc	80%			70%			50%			30%			10%			0
pw	50%	30%	10%	50%	30%	10%	50%	30%	10%	50%	30%	10%	50%	30%	10%	0
pfc	20%			20%			20%			20%			20%			0
RCR	RCR:Room Cavity Ratio						Wall Exitance Coefficients(WEC)									
0.0																
1.0	.386	.220	.070	.365	.208	.066	.326	.187	.060	.289	.167	.054	.256	.148	.048	
2.0	.328	.180	.055	.309	.170	.052	.273	.152	.047	.239	.134	.042	.209	.118	.037	
3.0	.289	.154	.046	.271	.145	.044	.238	.129	.039	.208	.114	.035	.180	.099	.031	
4.0	.259	.134	.039	.243	.127	.038	.212	.113	.034	.184	.099	.030	.158	.086	.026	
5.0	.234	.119	.035	.220	.113	.033	.192	.100	.029	.166	.088	.026	.142	.076	.023	
6.0	.214	.107	.031	.201	.101	.029	.175	.090	.026	.151	.079	.023	.129	.068	.020	
7.0	.197	.098	.028	.185	.092	.026	.161	.082	.024	.139	.071	.021	.118	.062	.018	
8.0	.183	.089	.025	.171	.084	.024	.150	.075	.021	.129	.065	.019	.110	.056	.016	
9.0	.170	.082	.023	.160	.078	.022	.139	.069	.020	.120	.060	.017	.102	.052	.015	
10.0	.159	.076	.021	.149	.072	.020	.130	.064	.018	.112	.056	.016	.095	.048	.014	

pcc	80%			70%			50%			30%			10%			0
pw	50%	30%	10%	50%	30%	10%	50%	30%	10%	50%	30%	10%	50%	30%	10%	0
pfc	20%			20%			20%			20%			20%			0
RCR	RCR:Room Cavity Ratio						Ceiling Cavity Exitance Coefficients (CCEC)									
0.0	.538	.538	.538	.460	.460	.460	.314	.314	.314	.180	.180	.180	.058	.058	.058	
1.0	.536	.506	.479	.458	.434	.412	.314	.299	.285	.180	.173	.166	.058	.056	.054	
2.0	.530	.484	.446	.454	.417	.386	.311	.288	.269	.179	.168	.158	.058	.054	.051	
3.0	.523	.469	.426	.448	.404	.369	.308	.281	.259	.178	.164	.153	.057	.053	.050	
4.0	.515	.457	.413	.442	.395	.359	.304	.275	.253	.176	.161	.149	.057	.053	.049	
5.0	.508	.448	.404	.436	.388	.351	.300	.271	.248	.174	.159	.147	.056	.052	.049	
6.0	.501	.441	.397	.430	.382	.346	.297	.267	.245	.172	.157	.146	.056	.051	.048	
7.0	.494	.434	.393	.425	.377	.342	.294	.264	.242	.171	.156	.144	.055	.051	.048	
8.0	.488	.429	.389	.420	.372	.339	.291	.261	.241	.169	.154	.143	.055	.051	.047	
9.0	.482	.425	.386	.415	.369	.337	.288	.259	.239	.168	.153	.143	.054	.050	.047	
10.0	.476	.421	.384	.411	.365	.335	.285	.257	.238	.166	.152	.142	.054	.050	.047	

C Range: 0 - 360DEG
C Interval: 30.0DEG
Test Speed: HIGH
Temperature:25.3℃
Operators:
Test Date:2025-03-03

γ Range: 0 - 180DEG
γ Interval: 1.0DEG
Test System:EVERFINE GO-2000B_V1 SYSTEM V2.00.488
Humidity:65.0%
Test Distance:6.360m [K=1.0000]
Remarks:

UGR(Unified Glare Rating) Table

Test:U:24.00V I:0.6801A P:16.32W PF:1.000 Freq:0Hz Lamp Flux:838.713x1 lm											
NAME: SF24-24V-2835-288-U2-2700K					TYPE:			WEIGHT:			
SPEC.:					DIM.: Length=1m			SERIAL No.:			
MFR.: OLympia lighting					SUR.:			Shielding Angle:			
ceiling/cavity	0.7	0.7	0.5	0.5	0.3	0.7	0.7	0.5	0.5	0.3	
walls	0.5	0.3	0.5	0.3	0.3	0.5	0.3	0.5	0.3	0.3	
working plane	0.2	0.2	0.2	0.2	0.2	0.2	0.2	0.2	0.2	0.2	
Room dimensions		Viewed crosswise					Viewed endwise				
x = 2H y = 2H	18.9	20.0	19.7	20.8	21.9	15.4	16.5	16.3	17.4	18.4	
	3H	22.2	23.2	23.1	24.1	25.2	17.2	18.2	18.1	19.1	20.2
	4H	24.1	25.1	25.0	26.0	27.1	18.1	19.0	19.0	19.9	21.0
	6H	26.2	27.1	27.1	28.0	29.2	18.8	19.7	19.7	20.6	21.8
	8H	27.4	28.3	28.3	29.2	30.3	19.2	20.0	20.0	20.9	22.1
	12H	28.8	29.6	29.7	30.5	31.7	19.4	20.2	20.3	21.2	22.3
4H	2H	19.4	20.4	20.3	21.2	22.4	17.1	18.0	17.9	18.9	20.0
	3H	23.0	23.8	23.9	24.8	25.9	19.1	19.9	20.0	20.8	22.0
	4H	25.1	25.9	26.0	26.8	28.0	20.2	20.9	21.1	21.8	23.0
	6H	27.4	28.1	28.4	29.0	30.2	21.1	21.8	22.1	22.7	24.0
	8H	28.7	29.3	29.7	30.3	31.5	21.6	22.2	22.5	23.1	24.4
	12H	30.2	30.8	31.2	31.7	33.0	21.9	22.5	22.9	23.5	24.7
8H	4H	25.4	26.1	26.4	27.0	28.2	21.8	22.4	22.7	23.4	24.6
	6H	28.1	28.6	29.1	29.6	30.8	23.2	23.7	24.1	24.7	25.9
	8H	29.6	30.1	30.6	31.1	32.3	23.8	24.3	24.8	25.3	26.6
	12H	31.4	31.8	32.3	32.8	34.1	24.4	24.8	25.4	25.8	27.1
12H	4H	25.5	26.0	26.4	27.0	28.2	22.4	23.0	23.3	23.9	25.2
	6H	28.2	28.7	29.2	29.7	30.9	24.0	24.5	25.0	25.5	26.8
	8H	29.9	30.3	30.8	31.3	32.6	24.9	25.3	25.9	26.3	27.6
Variations with the observer position at spacings(CIE Pub.117):											
S = 1.0H	+ 0.1 / - 0.1					+ 0.1 / - 0.1					
1.5H	+ 0.2 / - 0.3					+ 0.2 / - 0.2					
2.0H	+ 0.3 / - 0.4					+ 0.3 / - 0.4					

CIE Pub.117, 838.7 lm Total Lamp Luminous Flux Correct (8log(F/F0) = -0.6)
Area: 0.024 m2

C Range: 0 - 360DEG
C Interval: 30.0DEG
Test Speed: HIGH
Temperature:25.3℃
Operators:
Test Date:2025-03-03

γ Range: 0 - 180DEG
γ Interval: 1.0DEG
Test System:EVERFINE GO-2000B_V1 SYSTEM V2.00.488
Humidity:65.0%
Test Distance:6.360m [K=1.0000]
Remarks:

UTILIZATION FACTORS TABLE

Test:U:24.00V I:0.6801A P:16.32W PF:1.000 Freq:0Hz Lamp Flux:838.713x1 lm		
NAME: SF24-24V-2835-288-U2-2700K	TYPE:	WEIGHT:
SPEC.:	DIM.: Length=1m	SERIAL No.:
MFR.: OLympia lighting	SUR.:	Shielding Angle:

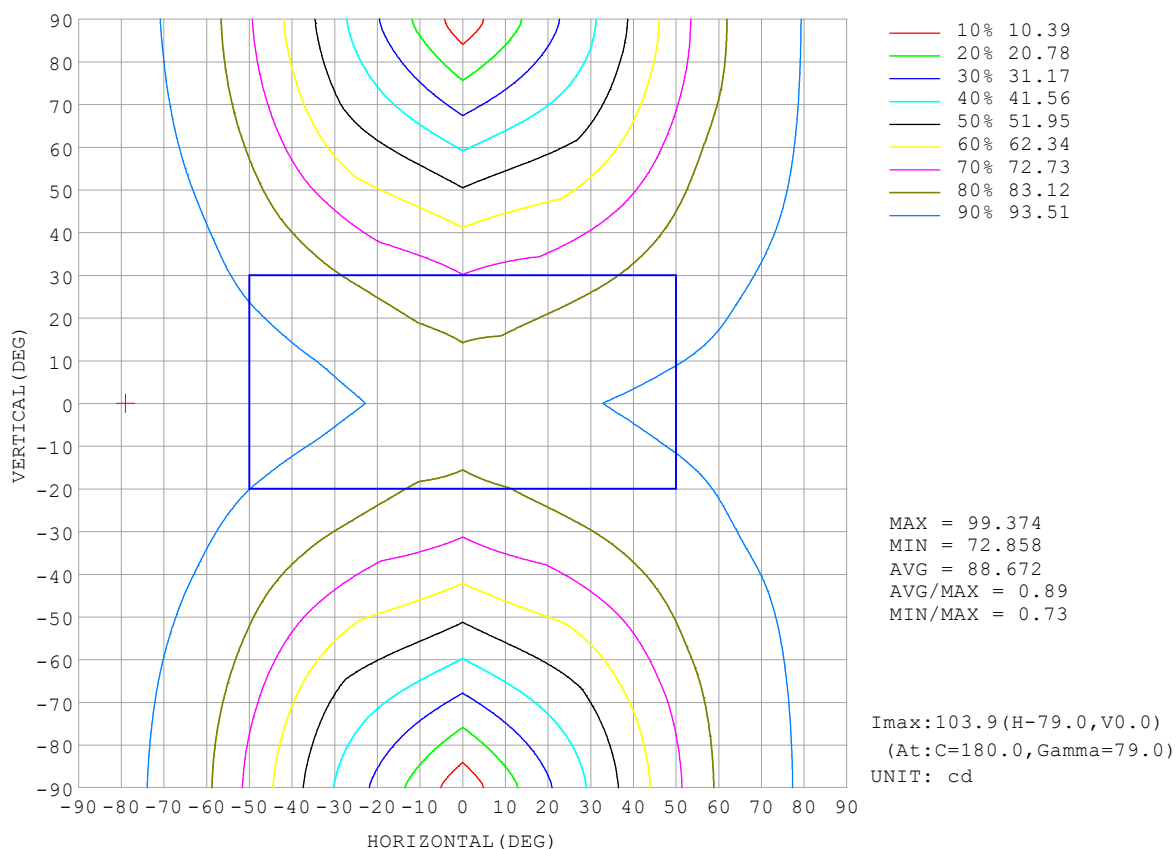
REFLECTANCE										
Ceiling	0.8	0.8	0.8	0.7	0.7	0.7	0.5	0.5	0.5	0
Walls	0.7	0.5	0.3	0.7	0.5	0.3	0.7	0.5	0.3	0
Working plane	0.2	0.2	0.2	0.2	0.2	0.2	0.2	0.2	0.2	0
ROOM INDEX	UTILIZATION FACTORS (PERCENT) $k(RI) \times RCR = 5$									
$k = 0.60$	39	27	20	37	26	19	34	24	18	11
0.80	48	35	27	45	33	25	40	30	23	14
1.00	55	42	33	52	40	32	46	37	29	18
1.25	62	49	40	58	46	38	51	41	34	21
1.50	67	54	45	63	51	43	55	45	38	24
2.00	75	63	54	70	59	51	60	52	45	28
2.50	80	68	60	74	64	56	64	56	50	31
3.00	83	73	65	78	68	61	66	60	54	33
4.00	88	80	72	82	74	68	70	64	59	37
5.00	92	84	77	85	78	73	73	68	63	39
ROOM INDEX	UF (total)									Direct
According to DIN EN 13032-2 2004			Suspended					SHRNOM = 1.25		

C Range: 0 - 360DEG
 C Interval: 30.0DEG
 Test Speed: HIGH
 Temperature: 25.3 °C
 Operators:
 Test Date: 2025-03-03

γ Range: 0 - 180DEG
 γ Interval: 1.0DEG
 Test System: EVERFINE GO-2000B_V1 SYSTEM V2.00.488
 Humidity: 65.0%
 Test Distance: 6.360m [K=1.0000]
 Remarks:

ISOCANDELA DIAGRAM

Test:U:24.00V I:0.6801A P:16.32W PF:1.000 Freq:0Hz Lamp Flux:838.713x1 lm		
NAME: SF24-24V-2835-288-U2-2700K	TYPE:	WEIGHT:
SPEC.:	DIM.: Length=1m	SERIAL No.:
MFR.: OLympia lighting	SUR.:	Shielding Angle:

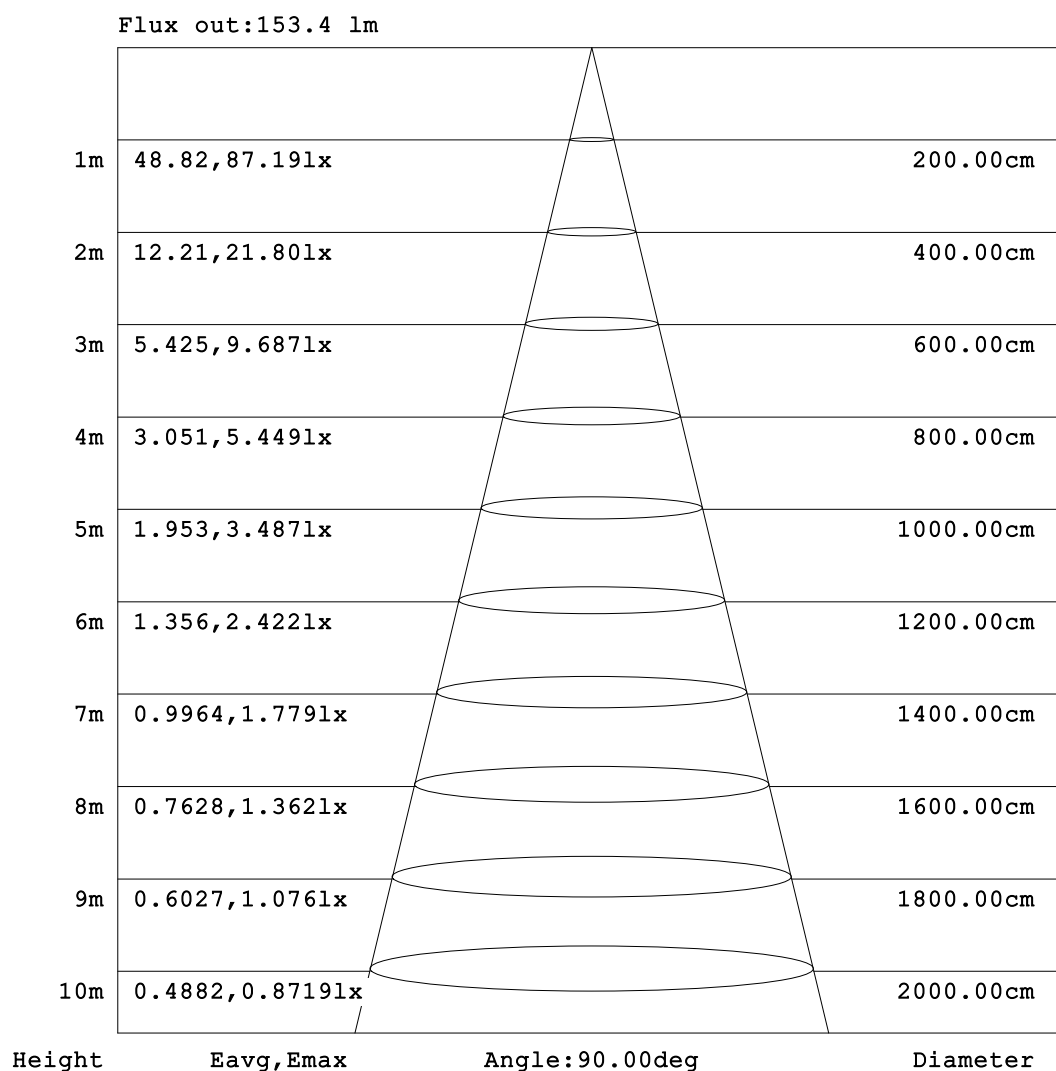


C Range: 0 - 360DEG
C Interval: 30.0DEG
Test Speed: HIGH
Temperature: 25.3°C
Operators:
Test Date: 2025-03-03

γ Range: 0 - 180DEG
γ Interval: 1.0DEG
Test System: EVERFINE GO-2000B_V1 SYSTEM V2.00.488
Humidity: 65.0%
Test Distance: 6.360m [K=1.0000]
Remarks:

AAI Figure

Test:U:24.00V I:0.6801A P:16.32W PF:1.000 Freq:0Hz Lamp Flux:838.713x1 lm		
NAME: SF24-24V-2835-288-U2-2700K	TYPE:	WEIGHT:
SPEC.:	DIM.: Length=1m	SERIAL No.:
MFR.: OLympia lighting	SUR.:	Shielding Angle:



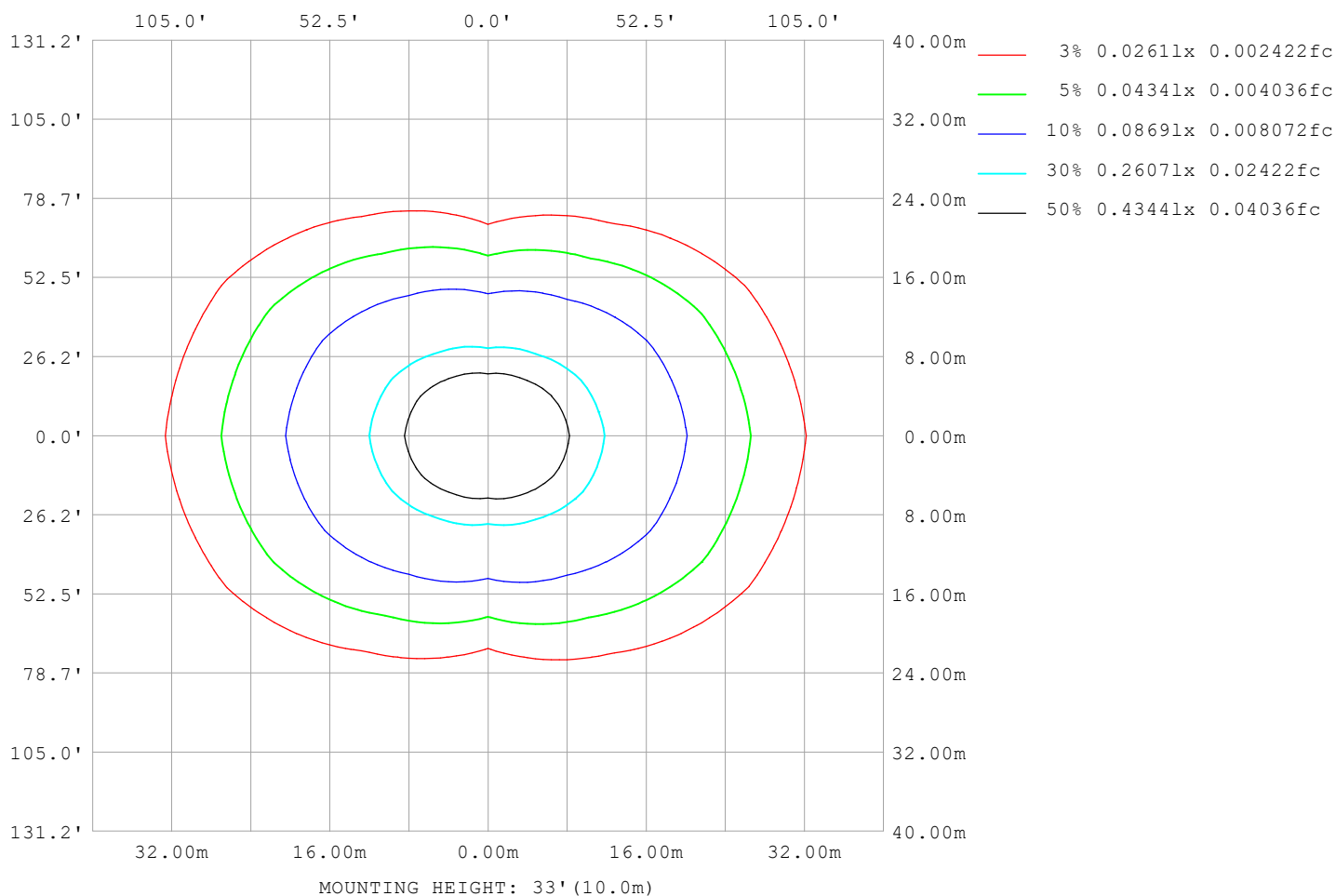
Note: The Curves indicate the illuminated area and the average illumination when the luminaire is at different distance.

C Range: 0 - 360DEG
C Interval: 30.0DEG
Test Speed: HIGH
Temperature: 25.3°C
Operators:
Test Date: 2025-03-03

γ Range: 0 - 180DEG
γ Interval: 1.0DEG
Test System: EVERFINE GO-2000B_V1 SYSTEM V2.00.488
Humidity: 65.0%
Test Distance: 6.360m [K=1.0000]
Remarks:

ISOLUX DIAGRAM

Test:U:24.00V I:0.6801A P:16.32W PF:1.000 Freq:0Hz Lamp Flux:838.713x1 lm		
NAME: SF24-24V-2835-288-U2-2700K	TYPE:	WEIGHT:
SPEC.:	DIM.: Length=1m	SERIAL No.:
MFR.: OLympia lighting	SUR.:	Shielding Angle:



C Range: 0 - 360DEG
C Interval: 30.0DEG
Test Speed: HIGH
Temperature: 25.3°C
Operators:
Test Date: 2025-03-03

γ Range: 0 - 180DEG
γ Interval: 1.0DEG
Test System: EVERFINE GO-2000B_V1 SYSTEM V2.00.488
Humidity: 65.0%
Test Distance: 6.360m [K=1.0000]
Remarks:

LED Avg.L Report

Test:U:24.00V I:0.6801A P:16.32W PF:1.000 Freq:0Hz Lamp Flux:838.713x1 lm		
NAME: SF24-24V-2835-288-U2-2700K	TYPE:	WEIGHT:
SPEC.:	DIM.: Length=1m	SERIAL No.:
MFR.: OLympia lighting	SUR.:	Shielding Angle:

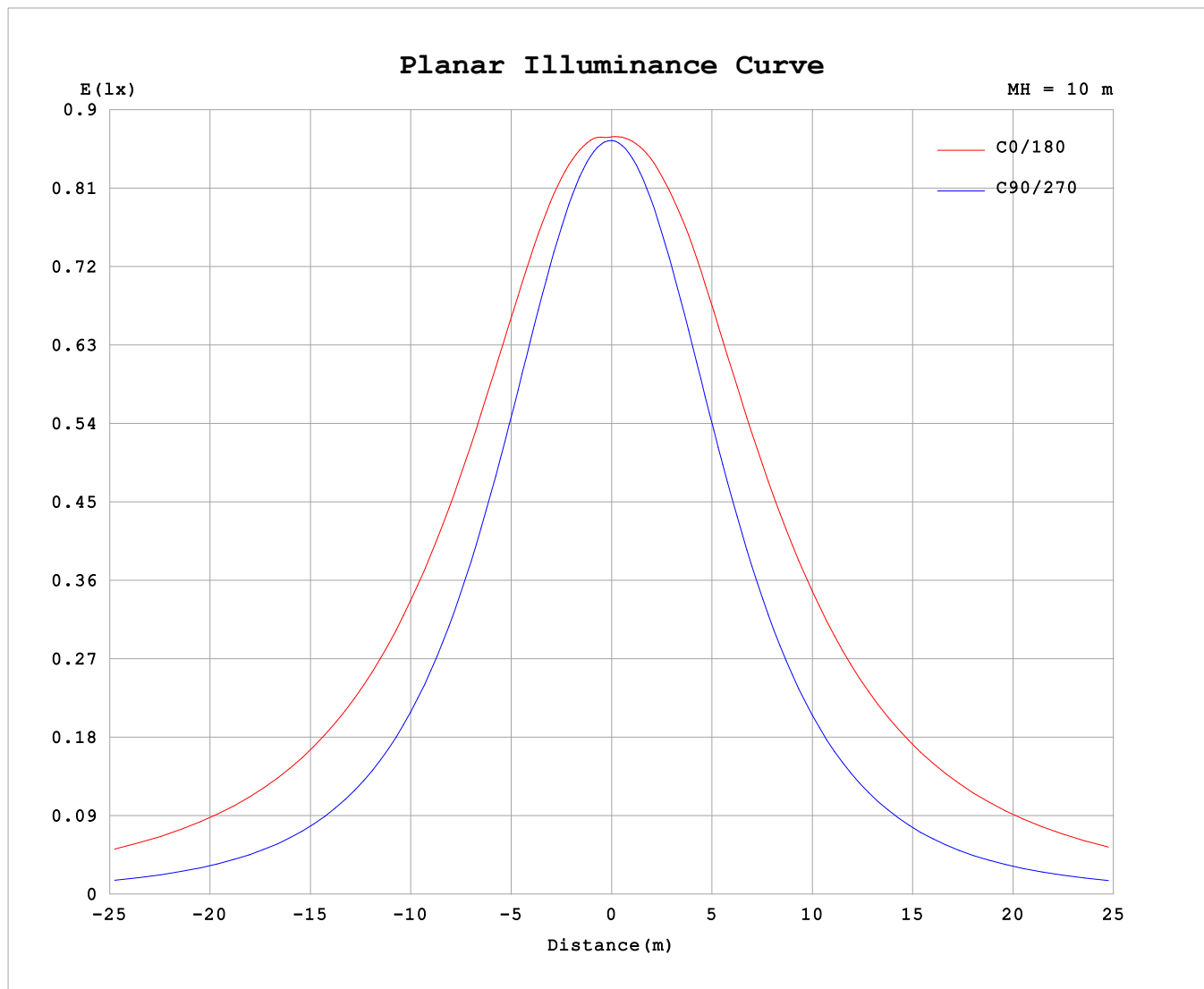
AvgL	cd/m2
L_0~180 (65) av	9918
L_0~180 (75) av	16345
L_0~180 (85) av	48569
L_90~270 (65) av	3412
L_90~270 (75) av	3510
L_90~270 (85) av	4426
L_45 (65) av	6988
L_45 (75) av	10907
L_45 (85) av	31329

Standard: GB/T 29293-2012

C Range: 0 - 360DEG
C Interval: 30.0DEG
Test Speed: HIGH
Temperature:25.3℃
Operators:
Test Date:2025-03-03

γ Range: 0 - 180DEG
γ Interval: 1.0DEG
Test System:EVERFINE GO-2000B_V1 SYSTEM V2.00.488
Humidity:65.0%
Test Distance:6.360m [K=1.0000]
Remarks:

Planar Illuminance Curve



C Range: 0 - 360DEG
C Interval: 30.0DEG
Test Speed: HIGH
Temperature: 25.3 °C
Operators:
Test Date: 2025-03-03

γ Range: 0 - 180DEG
 γ Interval: 1.0DEG
Test System: EVERFINE GO-2000B_V1 SYSTEM V2.00.488
Humidity: 65.0%
Test Distance: 6.360m [K=1.0000]
Remarks:

LUMINOUS DISTRIBUTION INTENSITY DATA

Test:U:24.00V I:0.6801A P:16.32W PF:1.000 Freq:0Hz Lamp Flux:838.713x1 lm		
NAME: SF24-24V-2835-288-U2-2700K	TYPE:	WEIGHT:
SPEC.:	DIM.: Length=1m	SERIAL No.:
MFR.: OLympia lighting	SUR.:	Shielding Angle:

Table--1

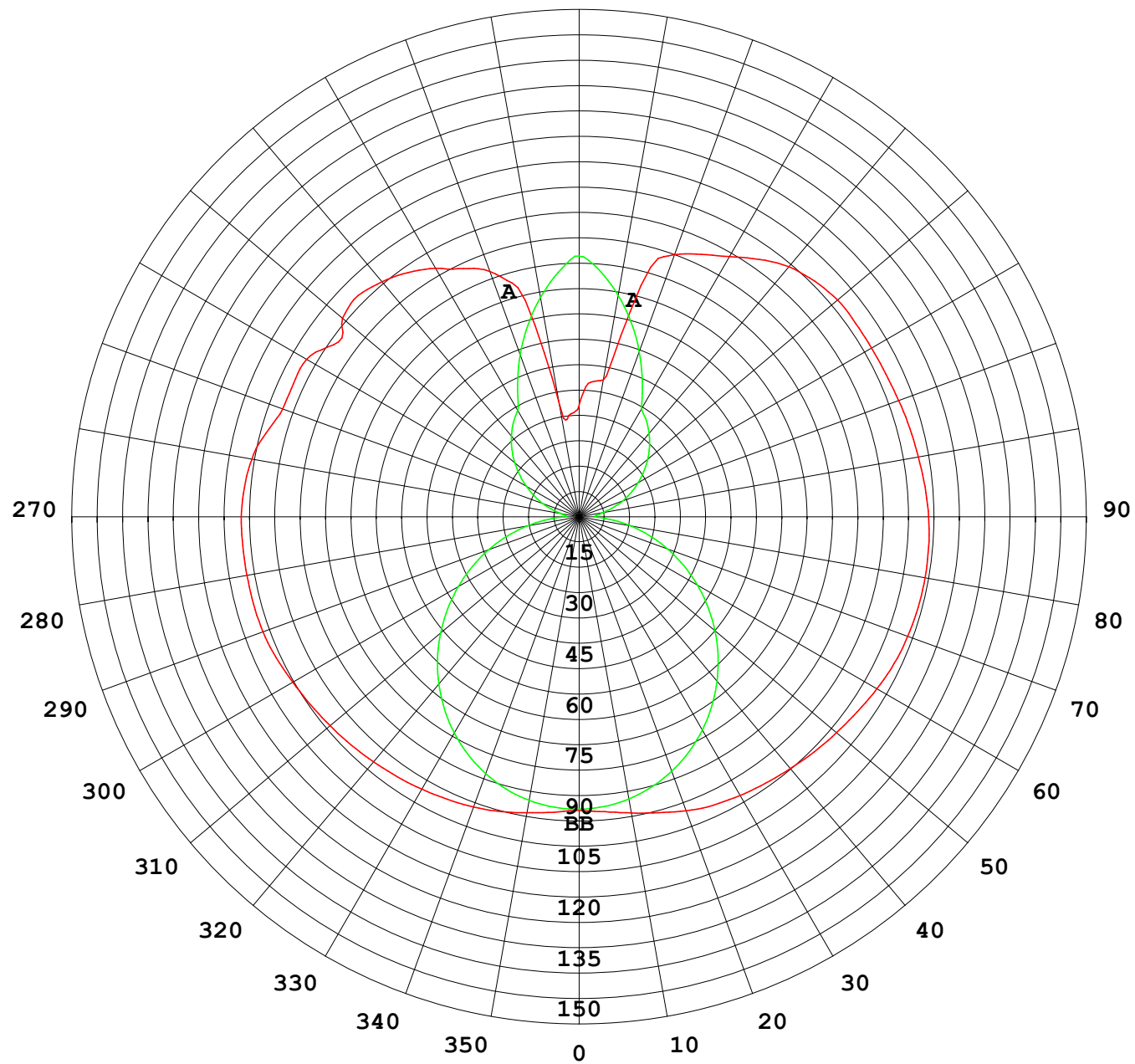
UNIT: cd

C (DEG) γ (DEG)	0	30	60	90	120	150	180	210	240	270	300	330						
0	86.7	86.7	86.7	86.7	86.7	86.7	86.7	86.7	86.7	86.7	86.7	86.7						
5	87.5	86.9	86.5	86.4	86.7	87.0	87.4	86.6	86.5	86.2	86.3	86.7						
10	88.7	87.5	86.1	85.4	86.2	87.4	88.8	87.2	86.0	85.0	85.5	87.1						
15	90.0	88.3	85.2	83.6	85.3	88.3	90.4	88.2	84.9	83.0	84.4	87.5						
20	91.1	88.8	84.0	81.0	83.8	89.1	92.3	88.9	83.5	80.3	82.7	87.8						
25	92.0	88.9	82.2	77.8	81.8	89.6	93.9	89.4	81.8	77.0	80.6	87.8						
30	92.8	88.8	79.9	74.0	79.5	89.9	95.0	89.7	79.6	73.0	78.1	87.5						
35	93.6	88.6	77.1	69.6	76.8	89.9	96.0	89.9	76.9	68.6	75.2	87.1						
40	94.4	88.2	73.9	64.7	73.6	89.5	97.0	89.6	73.8	63.6	71.8	86.6						
45	95.2	87.7	70.4	59.4	70.1	89.0	98.1	89.4	70.5	58.3	68.1	85.9						
50	96.0	87.2	66.8	53.6	66.3	88.5	99.2	89.1	67.0	52.6	64.2	85.3						
55	96.7	86.7	62.9	47.6	62.4	88.0	100	88.9	63.4	46.6	60.1	84.7						
60	97.6	86.3	58.9	41.4	58.2	87.6	102	88.8	59.7	40.5	56.1	84.2						
65	98.6	86.1	55.2	35.0	54.2	87.4	103	88.9	56.1	34.2	52.2	83.9						
70	99.3	85.9	51.8	28.5	50.6	87.2	103	88.9	53.1	27.9	48.6	83.7						
75	99.5	85.2	48.8	22.0	47.5	86.8	104	88.6	50.6	21.6	45.7	83.2						
80	99.6	84.7	46.3	15.6	45.1	86.2	104	88.2	48.5	15.3	43.3	82.6						
85	99.7	84.5	44.2	9.30	43.0	85.6	104	87.8	46.7	9.21	41.1	82.2						
90	99.7	84.3	42.8	4.00	41.4	85.2	103	87.4	45.4	4.64	39.8	82.2						
95	99.2	84.1	42.3	3.99	40.8	84.7	102	86.9	45.1	5.22	39.0	82.2						
100	98.1	82.3	36.1	5.42	41.5	84.3	102	86.6	45.8	7.05	34.3	80.9						
105	95.6	77.6	33.6	8.07	43.2	84.2	101	86.5	47.4	10.2	33.0	77.8						
110	93.1	74.8	33.6	11.5	46.1	84.3	100	86.6	50.3	13.8	33.2	74.9						
115	93.1	72.7	35.2	14.7	50.0	84.8	99.9	87.1	53.9	17.0	37.9	72.7						
120	92.9	70.7	40.3	18.0	53.1	85.5	99.6	87.7	56.5	20.2	40.3	75.8						
125	88.5	77.2	39.1	21.5	55.7	86.8	99.6	88.9	59.4	23.4	41.1	76.2						
130	91.2	78.1	37.3	24.9	58.6	87.7	99.5	89.2	61.9	26.6	42.9	73.6						
135	92.3	72.5	34.0	28.2	61.4	87.8	98.3	88.6	64.5	29.6	42.4	69.3						
140	90.6	63.8	31.0	31.3	64.1	86.1	96.3	87.3	67.1	32.3	41.6	65.8						
145	88.0	53.6	29.7	34.1	66.7	84.0	92.7	85.2	69.5	34.8	40.6	58.6						
150	84.7	47.5	28.5	36.5	69.1	82.4	88.7	83.6	71.4	37.1	39.6	51.7						
155	80.8	39.9	29.4	43.3	70.5	81.3	85.5	82.4	72.6	44.4	40.8	47.2						
160	77.1	31.3	39.0	51.2	71.6	80.4	82.3	81.4	73.3	52.2	47.1	42.9						
165	70.0	29.9	50.0	58.8	73.1	79.4	70.7	80.0	74.6	59.7	55.0	41.2						
170	33.6	37.2	60.6	66.1	73.6	79.0	41.0	79.3	74.9	66.7	62.8	47.5						
175	30.4	54.7	69.6	72.7	75.2	78.0	39.9	77.8	75.7	73.0	70.5	59.6						
180	32.9	71.1	76.8	77.4	77.1	72.2	33.1	71.1	76.9	77.2	77.2	72.0						

C Range: 0 - 360DEG
C Interval: 30.0DEG
Test Speed: HIGH
Temperature:25.3℃
Operators:
Test Date:2025-03-03

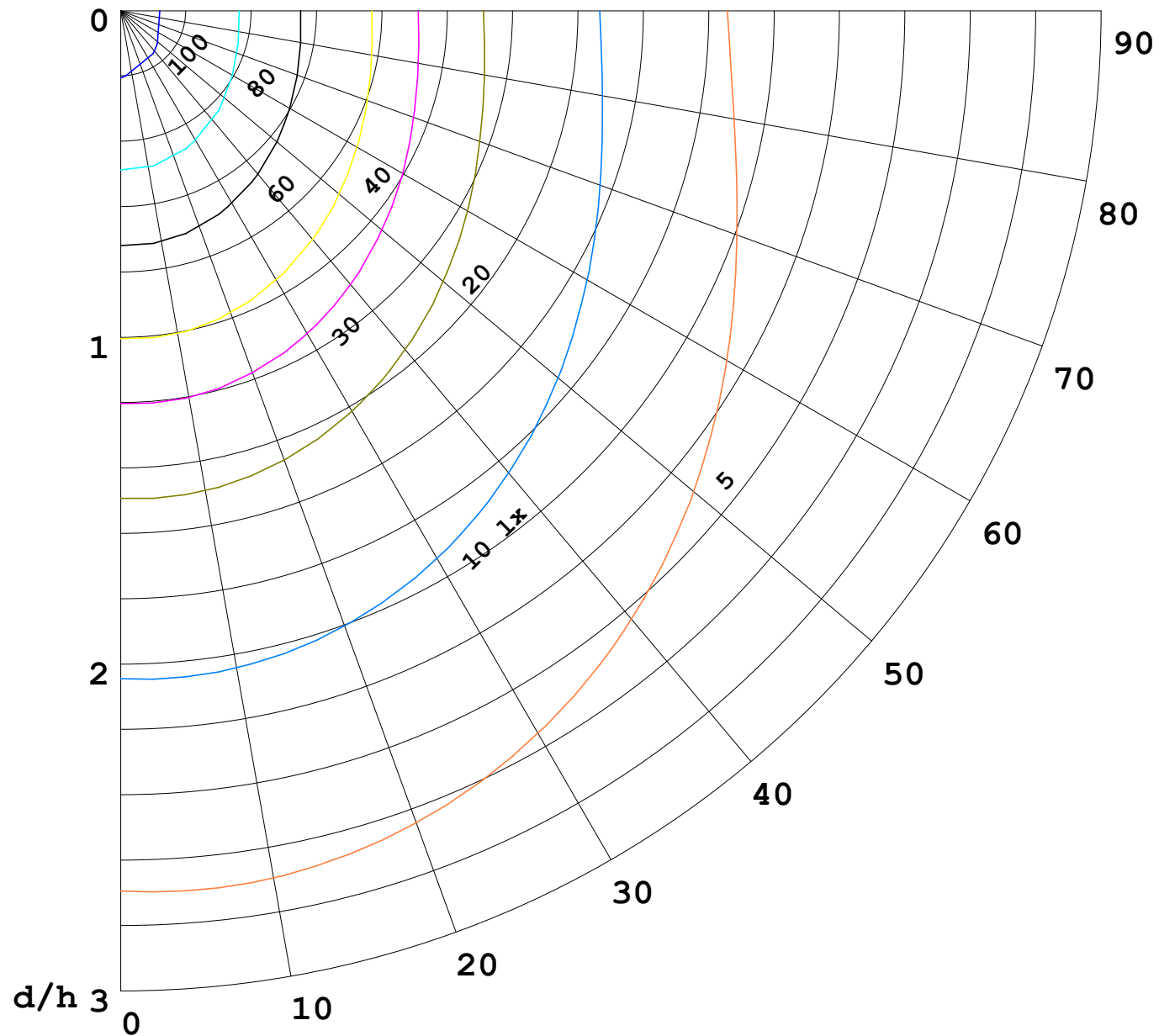
γ Range: 0 - 180DEG
γ Interval: 1.0DEG
Test System:EVERFINE GO-2000B_V1 SYSTEM V2.00.488
Humidity:65.0%
Test Distance:6.360m [K=1.0000]
Remarks:

I (cd)



1000 lm

$\kappa = 1$



F = 1000 lm
 K = 0.7
 Hcc = 0.8 m
 Hfc = 0.0 m
 Eave = 100 lx

	Pcc	Pw	Pfc
————	70	50	30
————	50	30	20

