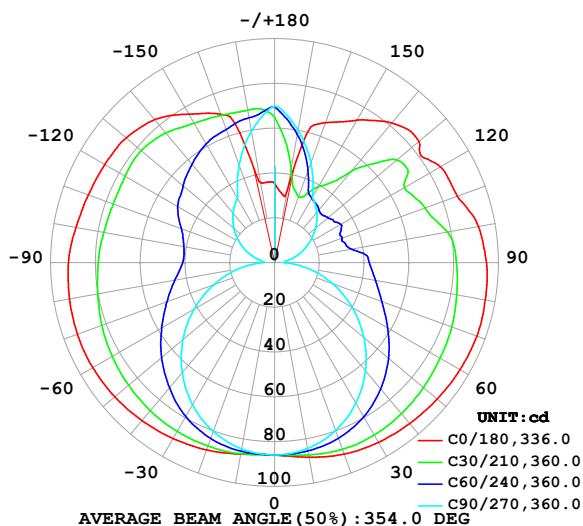


LUMINAIRE PHOTOMETRIC TEST REPORT

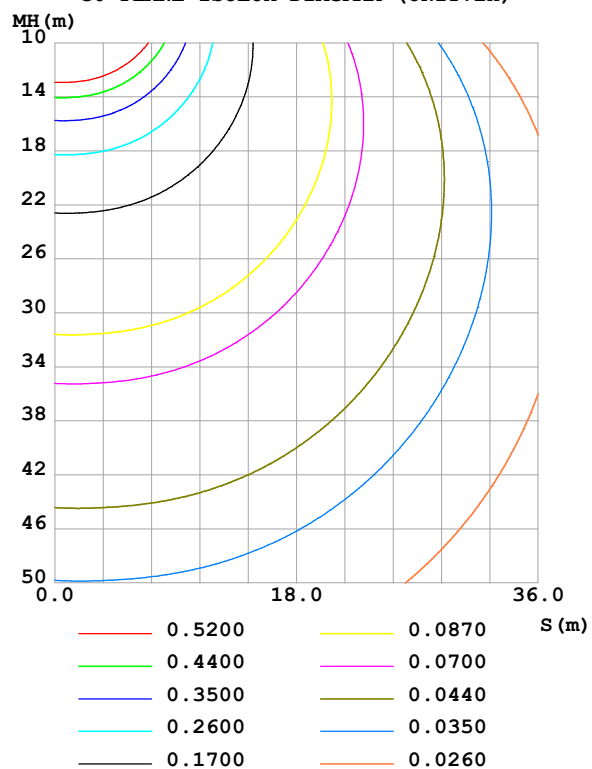
Test:U:24.00V I:0.6799A P:16.32W PF:1.000 Freq:0Hz Lamp Flux:788.597x1 lm		
NAME: SF24-24V-2835-288-U2-2500K	TYPE:	WEIGHT:
SPEC.:	DIM.: Length=1m	SERIAL No.:
MFR.: OLympia lighting	SUR.:	Shielding Angle:

DATA OF LAMP		PHOTOMETRIC DATA				Eff: 48.33 lm/W
MODEL	2835	I _{max} (cd)	96.12	S/MH(C0/180)	1.63	
NOMINAL POWER(W)	16	LOR(%)	100.0	S/MH(C90/270)	1.27	
RATED VOLTAGE(V)	24	TOTAL FLUX(lm)	788.60	η UP,DN(C0-180)	21.7,28.0	
NOMINAL FLUX(lm)	788.597	CIE CLASS	DIFFUSE	η UP,DN(C180-360)	22.3,28.1	
LAMPS INSIDE	1	η up(%)	43.9	CIBSE SHR NOM	1.75	
TEST VOLTAGE(V)		η down(%)	56.1	CIBSE SHR MAX	1.75	

LUMINOUS INTENSITY DISTRIBUTION DIAGRAM



C0 PLANE ISOLUX DIAGRAM (UNIT:lx)



C Range: 0 - 360DEG
C Interval: 30.0DEG
Test Speed: HIGH
Temperature:25.3℃
Operators:
Test Date:2025-03-03

γ Range: 0 - 180DEG
γ Interval: 1.0DEG
Test System:EVERFINE GO-2000B_V1 SYSTEM V2.00.488
Humidity:65.0%
Test Distance:6.360m [K=1.0000]
Remarks:

ZONAL FLUX DIAGRAM

ZONAL FLUX DIAGRAM:

γ	C0	C45	C90	C135	C180	C225	C270	C315	γ	Φ zone	Φ total	%lum, lamp
10	88.25	86.33	84.30	86.10	86.82	86.16	84.53	86.20	0- 10	8.215	8.215	1.04,1.04
20	90.98	86.12	79.73	85.17	89.03	85.37	80.24	85.71	10- 20	24.34	32.55	4.13,4.13
30	92.75	84.25	72.55	82.50	90.74	83.26	73.32	83.62	20- 30	39.02	71.57	9.08,9.08
40	93.81	80.93	63.16	78.43	92.13	79.73	64.22	79.98	30- 40	51.03	122.6	15.5,15.5
50	94.78	76.68	52.06	73.60	93.23	75.61	53.43	75.32	40- 50	59.64	182.2	23.1,23.1
60	95.65	71.90	39.98	68.31	93.78	71.05	41.51	70.24	50- 60	64.69	246.9	31.3,31.3
70	96.11	67.65	27.55	63.42	93.71	66.73	28.99	65.61	60- 70	66.49	313.4	39.7,39.7
80	95.56	64.22	15.01	59.19	93.01	62.81	16.42	61.84	70- 80	65.68	379.1	48.1,48.1
90	94.60	61.87	4.251	56.52	92.12	60.02	4.993	59.11	80- 90	62.99	442.1	56.1,56.1
100	92.42	56.74	6.140	56.17	90.14	59.41	6.664	54.69	90-100	60.31	502.4	63.7,63.7
110	86.88	51.88	11.98	57.92	88.55	60.60	12.44	50.85	100-110	56.80	559.2	70.9,70.9
120	85.59	50.74	17.91	61.21	87.62	63.61	18.09	53.85	110-120	54.08	613.3	77.8,77.8
130	84.18	51.32	23.89	64.22	86.65	65.66	23.78	53.82	120-130	50.84	664.1	84.2,84.2
140	81.38	42.00	29.32	65.50	83.39	66.55	28.96	49.80	130-140	44.06	708.2	89.8,89.8
150	73.51	36.22	33.91	66.12	76.56	66.60	33.36	42.68	140-150	34.32	742.5	94.2,94.2
160	66.45	37.60	47.47	66.52	70.51	66.69	46.40	42.26	150-160	24.82	767.3	97.3,97.3
170	33.02	50.46	60.24	67.50	36.19	67.43	59.66	51.75	160-170	15.74	783.1	99.3,99.3
180	35.24	67.15	69.84	67.39	35.35	67.19	69.71	67.35	170-180	5.514	788.6	100,100
DEG	LUMINOUS INTENSITY:cd									UNIT:lm		

Conical surface Flux(90deg): 151.56 lm

%lum = 19.2%

%lamp = 19.2%

Conical surface Flux(130deg): 280.12 lm

%lum = 35.5%

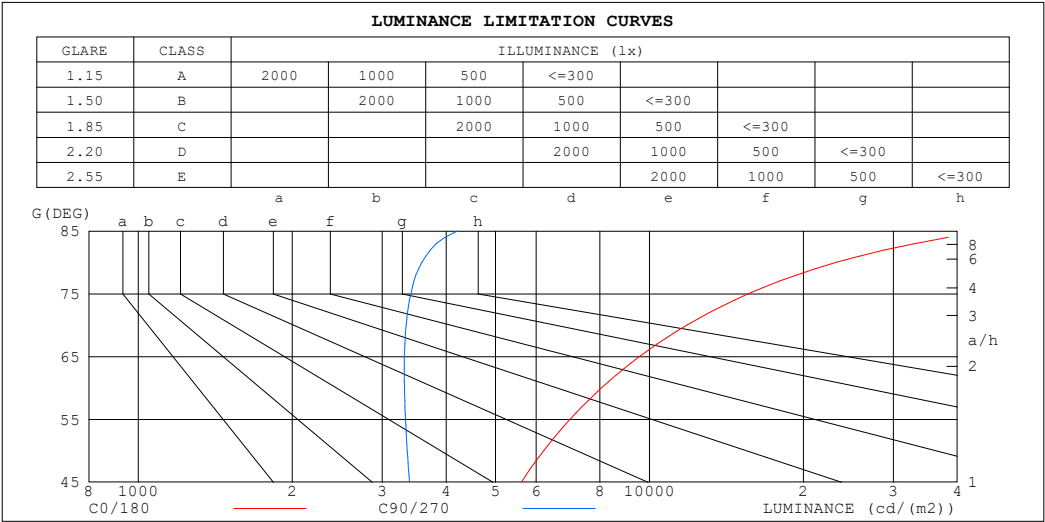
%lamp = 35.5%

C Range: 0 - 360DEG
 C Interval: 30.0DEG
 Test Speed: HIGH
 Temperature:25.3℃
 Operators:
 Test Date:2025-03-03

γ Range: 0 - 180DEG
 γ Interval: 1.0DEG
 Test System:EVERFINE GO-2000B_V1 SYSTEM V2.00.488
 Humidity:65.0%
 Test Distance:6.360m [K=1.0000]
 Remarks:

LUMINANCE LIMITATION CURVES

Test:U:24.00V I:0.6799A P:16.32W PF:1.000 Freq:0Hz Lamp Flux:788.597x1 lm		
NAME: SF24-24V-2835-288-U2-2500K	TYPE:	WEIGHT:
SPEC.:	DIM.: Length=1m	SERIAL No.:
MFR.: OLympia lighting	SUR.:	Shielding Angle:



LUMINANCE cd/(m2)		
G (DEG)	C0/180	C90/270
85	46018	4210
80	23172	3585
75	15613	3414
70	11832	3341
65	9558	3315
60	8055	3316
55	6992	3332
50	6209	3358
45	5617	3389

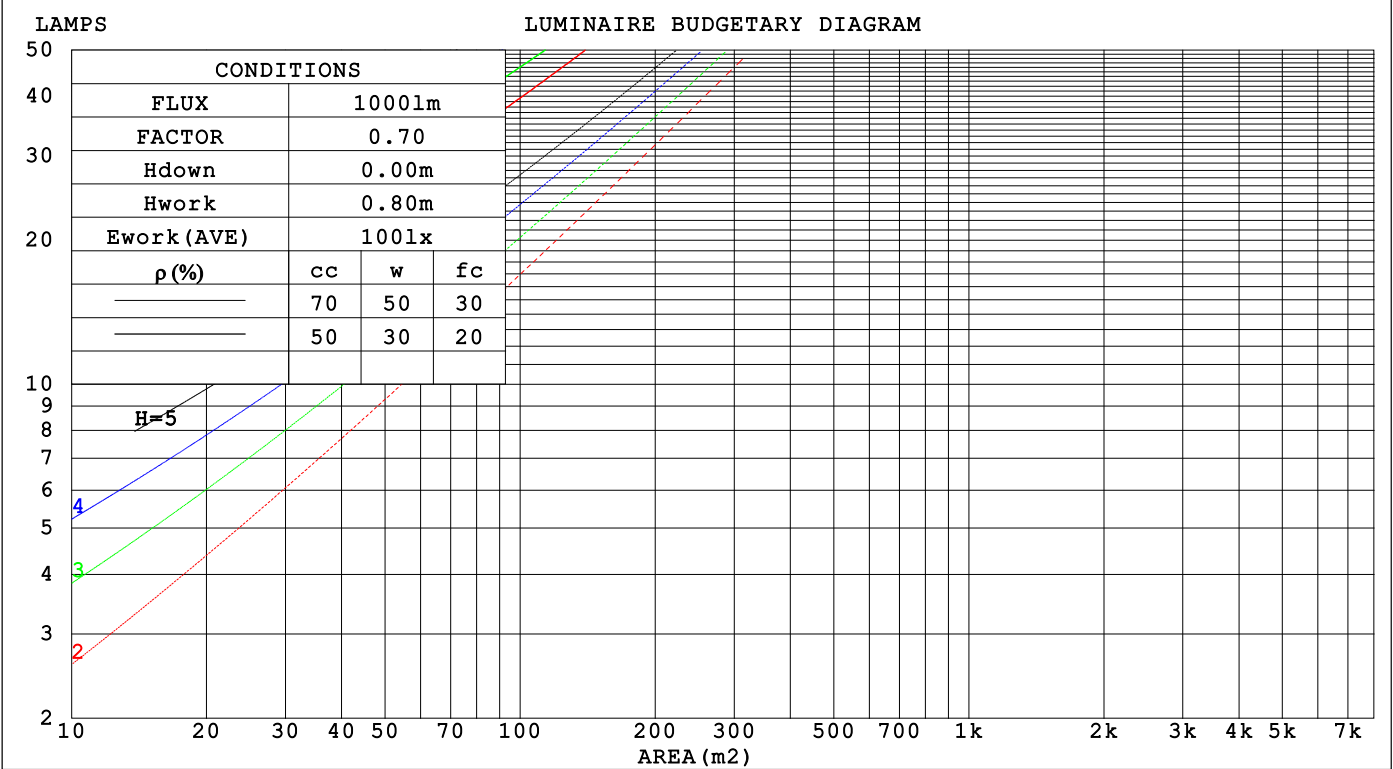
C Range: 0 - 360DEG
C Interval: 30.0DEG
Test Speed: HIGH
Temperature:25.3℃
Operators:
Test Date:2025-03-03

γ Range: 0 - 180DEG
γ Interval: 1.0DEG
Test System:EVERFINE GO-2000B_V1 SYSTEM V2.00.488
Humidity:65.0%
Test Distance:6.360m [K=1.0000]
Remarks:

CU AND LUMINAIRE BUDGETARY ESTIMATE DIAGRAM

Test:U:24.00V I:0.6799A P:16.32W PF:1.000 Freq:0Hz		
Lamp Flux:788.597x1 lm		
NAME: SF24-24V-2835-288-U2-2500K	TYPE:	WEIGHT:
SPEC.:	DIM.: Length=1m	SERIAL No.:
MFR.: OLYMPIA lighting	SUR.:	Shielding Angle:

pcc	80%			70%			50%			30%			10%			0
pw	50%	30%	10%	50%	30%	10%	50%	30%	10%	50%	30%	10%	50%	30%	10%	0
pfc	20%			20%			20%			20%			20%			0
RCR	RCR:Room Cavity Ratio															



C Range: 0 - 360DEG
C Interval: 30.0DEG
Test Speed: HIGH
Temperature:25.3℃
Operators:
Test Date:2025-03-03

γ Range: 0 - 180DEG
γ Interval: 1.0DEG
Test System:EVERFINE GO-2000B_V1 SYSTEM V2.00.488
Humidity:65.0%
Test Distance:6.360m [K=1.0000]
Remarks:

WEC AND CCEC

Test:U:24.00V I:0.6799A P:16.32W PF:1.000 Freq:0Hz Lamp Flux:788.597x1 lm		
NAME: SF24-24V-2835-288-U2-2500K	TYPE:	WEIGHT:
SPEC.:	DIM.: Length=1m	SERIAL No.:
MFR.: OLympia lighting	SUR.:	Shielding Angle:

pcc	80%			70%			50%			30%			10%			0														
pw	50%	30%	10%	50%	30%	10%	50%	30%	10%	50%	30%	10%	50%	30%	10%	0														
pfc	20%			20%			20%			20%			20%			0														
RCR	RCR:Room Cavity Ratio															Wall Exitance Coefficients(WEC)														
0.0																														
1.0	.386	.220	.070	.366	.209	.066	.327	.188	.060	.292	.168	.054	.259	.150	.048															
2.0	.328	.180	.055	.310	.171	.053	.274	.153	.047	.242	.136	.043	.212	.120	.038															
3.0	.289	.154	.046	.272	.146	.044	.240	.130	.040	.210	.115	.035	.183	.101	.031															
4.0	.259	.135	.040	.244	.127	.038	.214	.114	.034	.187	.100	.030	.161	.088	.027															
5.0	.235	.120	.035	.221	.113	.033	.194	.101	.030	.169	.089	.026	.145	.078	.023															
6.0	.215	.108	.031	.202	.102	.029	.177	.091	.026	.154	.080	.023	.132	.069	.021															
7.0	.198	.098	.028	.186	.093	.026	.163	.082	.024	.141	.072	.021	.121	.063	.018															
8.0	.183	.090	.025	.172	.085	.024	.151	.075	.022	.131	.066	.019	.112	.057	.017															
9.0	.171	.083	.023	.160	.078	.022	.141	.069	.020	.122	.061	.017	.104	.053	.015															
10.0	.160	.077	.021	.150	.072	.020	.132	.064	.018	.114	.057	.016	.097	.049	.014															

pcc	80%			70%			50%			30%			10%			0
pw	50%	30%	10%	50%	30%	10%	50%	30%	10%	50%	30%	10%	50%	30%	10%	0
pfc	20%			20%			20%			20%			20%			0
RCR	RCR:Room Cavity Ratio						Ceiling Cavity Exitance Coefficients (CCEC)									
0.0	.525	.525	.525	.449	.449	.449	.306	.306	.306	.176	.176	.176	.056	.056	.056	
1.0	.523	.493	.466	.448	.423	.401	.306	.291	.277	.176	.168	.161	.056	.054	.052	
2.0	.517	.472	.433	.443	.406	.375	.303	.281	.261	.175	.163	.153	.056	.053	.050	
3.0	.510	.456	.413	.437	.393	.358	.300	.273	.251	.173	.160	.148	.056	.052	.049	
4.0	.502	.444	.400	.431	.384	.347	.296	.268	.245	.172	.157	.145	.055	.051	.048	
5.0	.495	.435	.391	.425	.376	.340	.293	.263	.240	.170	.154	.142	.055	.050	.047	
6.0	.488	.428	.384	.420	.370	.335	.289	.259	.237	.168	.153	.141	.054	.050	.046	
7.0	.481	.421	.380	.414	.365	.331	.286	.256	.234	.166	.151	.139	.054	.049	.046	
8.0	.475	.416	.376	.409	.361	.328	.283	.253	.232	.165	.150	.139	.053	.049	.046	
9.0	.469	.412	.373	.404	.357	.325	.280	.251	.231	.163	.148	.138	.053	.049	.046	
10.0	.463	.408	.371	.399	.354	.324	.277	.249	.230	.162	.147	.137	.052	.048	.045	

C Range: 0 - 360DEG
C Interval: 30.0DEG
Test Speed: HIGH
Temperature:25.3℃
Operators:
Test Date:2025-03-03

γ Range: 0 - 180DEG
γ Interval: 1.0DEG
Test System:EVERFINE GO-2000B_V1 SYSTEM V2.00.488
Humidity:65.0%
Test Distance:6.360m [K=1.0000]
Remarks:

UGR(Unified Glare Rating) Table

Test:U:24.00V I:0.6799A P:16.32W PF:1.000 Freq:0Hz Lamp Flux:788.597x1 lm											
NAME: SF24-24V-2835-288-U2-2500K					TYPE:			WEIGHT:			
SPEC.:					DIM.: Length=1m			SERIAL No.:			
MFR.: OLympia lighting					SUR.:			Shielding Angle:			
ceiling/cavity	0.7	0.7	0.5	0.5	0.3	0.7	0.7	0.5	0.5	0.3	
walls	0.5	0.3	0.5	0.3	0.3	0.5	0.3	0.5	0.3	0.3	
working plane	0.2	0.2	0.2	0.2	0.2	0.2	0.2	0.2	0.2	0.2	
Room dimensions		Viewed crosswise					Viewed endwise				
x = 2H y = 2H	2H	19.3	20.4	20.1	21.2	22.3	15.8	16.9	16.6	17.7	18.7
	3H	22.6	23.6	23.4	24.4	25.5	17.6	18.6	18.4	19.4	20.5
	4H	24.4	25.4	25.3	26.3	27.4	18.4	19.4	19.2	20.2	21.3
	6H	26.5	27.4	27.4	28.3	29.4	19.1	20.0	20.0	20.9	22.0
	8H	27.7	28.5	28.6	29.4	30.6	19.5	20.3	20.3	21.2	22.3
	12H	29.0	29.8	29.9	30.7	31.9	19.7	20.5	20.6	21.4	22.6
4H	2H	19.8	20.8	20.7	21.6	22.7	17.4	18.4	18.3	19.2	20.3
	3H	23.4	24.2	24.2	25.1	26.2	19.5	20.3	20.3	21.2	22.3
	4H	25.4	26.2	26.3	27.1	28.3	20.5	21.3	21.4	22.2	23.3
	6H	27.7	28.4	28.6	29.3	30.5	21.5	22.1	22.4	23.1	24.3
	8H	29.0	29.6	29.9	30.6	31.8	21.9	22.5	22.8	23.5	24.7
	12H	30.5	31.0	31.4	32.0	33.2	22.3	22.8	23.2	23.8	25.0
8H	4H	25.8	26.4	26.7	27.3	28.5	22.1	22.8	23.1	23.7	24.9
	6H	28.4	28.9	29.3	29.9	31.1	23.5	24.0	24.5	25.0	26.2
	8H	29.9	30.4	30.9	31.3	32.6	24.2	24.6	25.1	25.6	26.9
	12H	31.6	32.0	32.6	33.0	34.3	24.8	25.2	25.8	26.2	27.4
12H	4H	25.8	26.4	26.7	27.3	28.5	22.7	23.3	23.7	24.3	25.5
	6H	28.5	29.0	29.5	30.0	31.2	24.4	24.9	25.3	25.8	27.1
	8H	30.1	30.6	31.1	31.5	32.8	25.2	25.7	26.2	26.6	27.9
Variations with the observer position at spacings(CIE Pub.117):											
S = 1.0H		+ 0.1 / - 0.1					+ 0.1 / - 0.1				
1.5H		+ 0.2 / - 0.3					+ 0.2 / - 0.2				
2.0H		+ 0.3 / - 0.4					+ 0.3 / - 0.4				

CIE Pub.117, 788.6 lm Total Lamp Luminous Flux Correct (8log(F/F0) = -0.8)
Area: 0.024 m2

C Range: 0 - 360DEG
C Interval: 30.0DEG
Test Speed: HIGH
Temperature:25.3℃
Operators:
Test Date:2025-03-03

γ Range: 0 - 180DEG
γ Interval: 1.0DEG
Test System:EVERFINE GO-2000B_V1 SYSTEM V2.00.488
Humidity:65.0%
Test Distance:6.360m [K=1.0000]
Remarks:

UTILIZATION FACTORS TABLE

Test:U:24.00V I:0.6799A P:16.32W PF:1.000 Freq:0Hz Lamp Flux:788.597x1 lm		
NAME: SF24-24V-2835-288-U2-2500K	TYPE:	WEIGHT:
SPEC.:	DIM.: Length=1m	SERIAL No.:
MFR.: OLympia lighting	SUR.:	Shielding Angle:

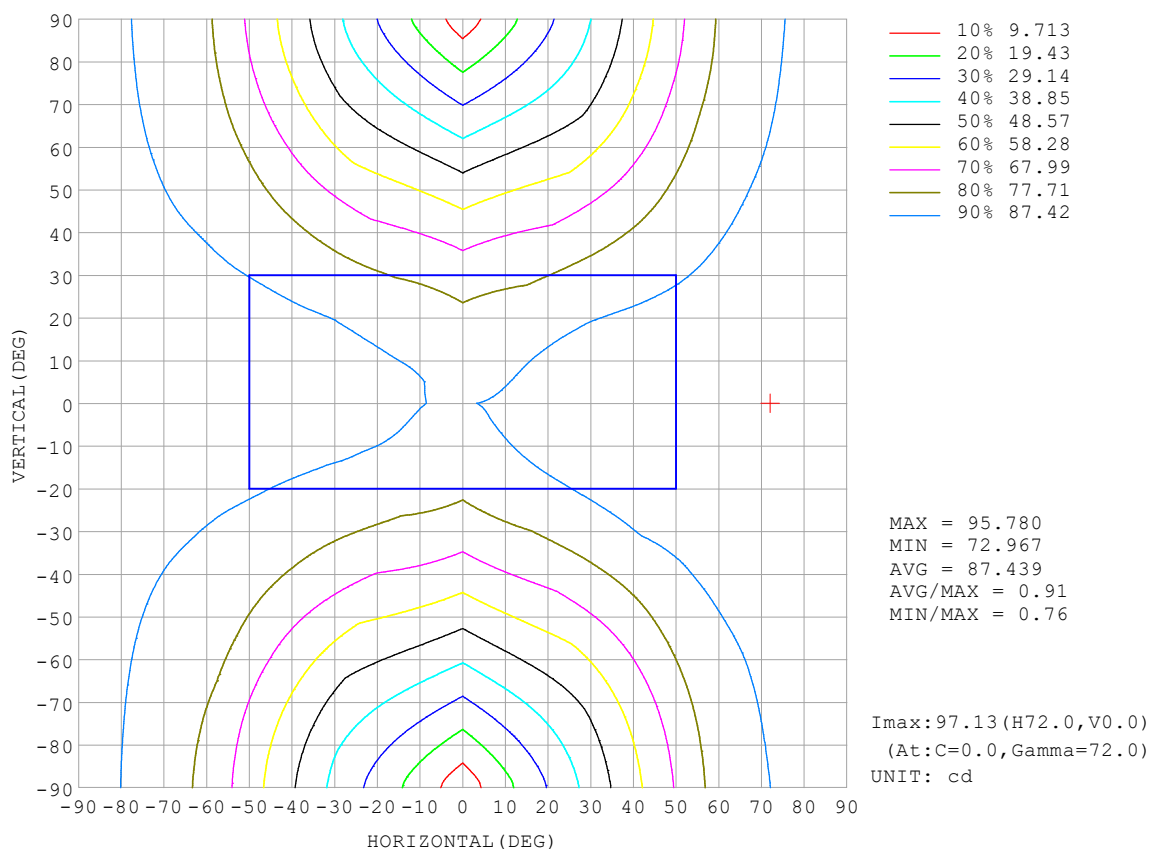
REFLECTANCE										
Ceiling	0.8	0.8	0.8	0.7	0.7	0.7	0.5	0.5	0.5	0
Walls	0.7	0.5	0.3	0.7	0.5	0.3	0.7	0.5	0.3	0
Working plane	0.2	0.2	0.2	0.2	0.2	0.2	0.2	0.2	0.2	0
ROOM INDEX	UTILIZATION FACTORS (PERCENT) $k(RI) \times RCR = 5$									
$k = 0.60$	40	27	20	38	26	20	34	24	18	11
0.80	48	35	27	46	34	26	41	31	24	15
1.00	56	42	34	52	40	32	46	38	30	18
1.25	63	49	40	59	47	38	52	42	35	22
1.50	68	55	46	63	52	43	55	46	39	25
2.00	75	63	54	70	60	51	61	53	46	29
2.50	80	69	60	75	65	57	65	57	51	32
3.00	84	74	66	78	69	62	67	60	55	34
4.00	89	80	73	83	75	69	71	65	60	38
5.00	92	85	78	86	79	73	74	69	64	40
ROOM INDEX	UF (total)									Direct
According to DIN EN 13032-2 2004			Suspended					SHRNOM = 1.25		

C Range: 0 - 360DEG
 C Interval: 30.0DEG
 Test Speed: HIGH
 Temperature: 25.3°C
 Operators:
 Test Date: 2025-03-03

γ Range: 0 - 180DEG
 γ Interval: 1.0DEG
 Test System: EVERFINE GO-2000B_V1 SYSTEM V2.00.488
 Humidity: 65.0%
 Test Distance: 6.360m [K=1.0000]
 Remarks:

ISOCANDELA DIAGRAM

Test:U:24.00V I:0.6799A P:16.32W PF:1.000 Freq:0Hz Lamp Flux:788.597x1 lm		
NAME: SF24-24V-2835-288-U2-2500K	TYPE:	WEIGHT:
SPEC.:	DIM.: Length=1m	SERIAL No.:
MFR.: OLympia lighting	SUR.:	Shielding Angle:

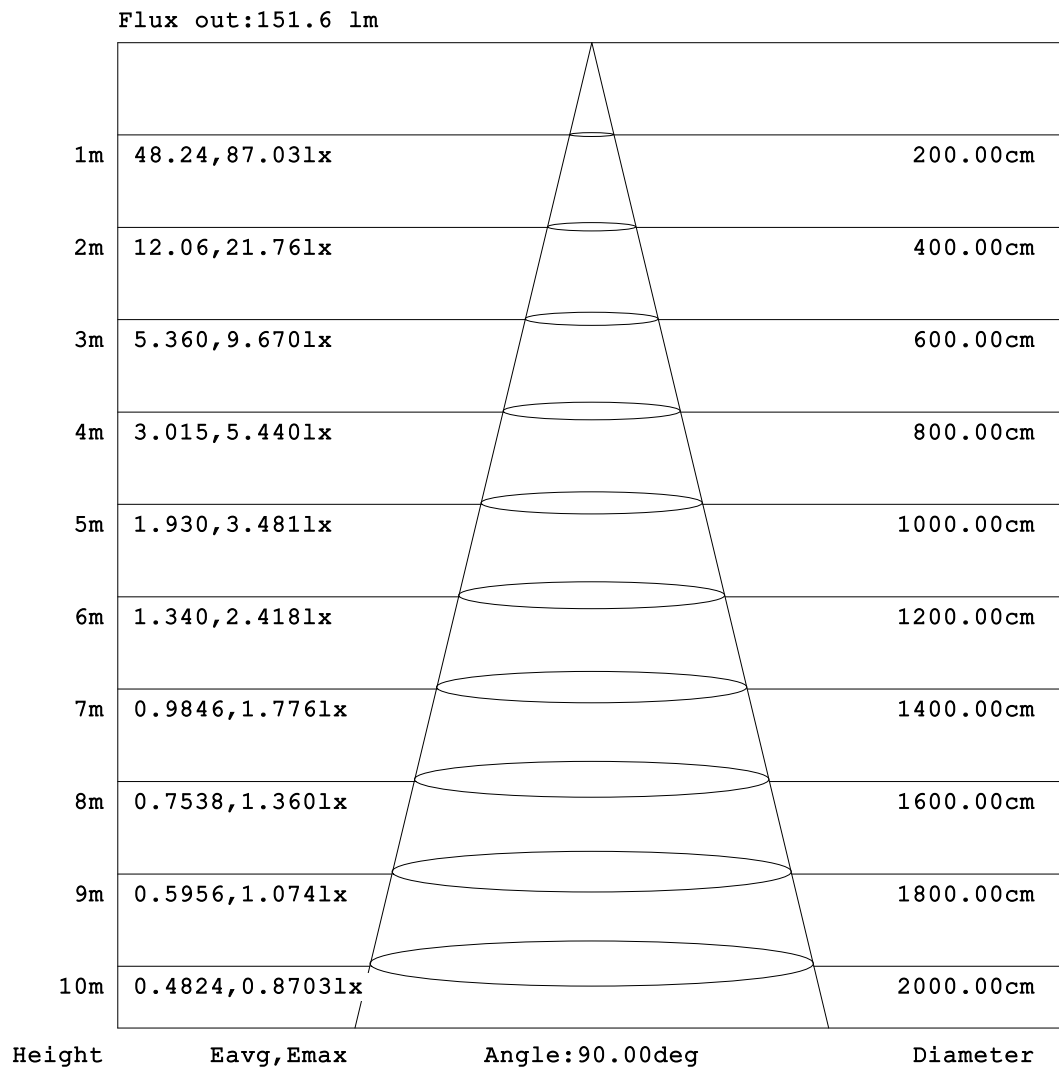


C Range: 0 - 360DEG
C Interval: 30.0DEG
Test Speed: HIGH
Temperature: 25.3°C
Operators:
Test Date: 2025-03-03

γ Range: 0 - 180DEG
γ Interval: 1.0DEG
Test System: EVERFINE GO-2000B_V1 SYSTEM V2.00.488
Humidity: 65.0%
Test Distance: 6.360m [K=1.0000]
Remarks:

AAI Figure

Test:U:24.00V I:0.6799A P:16.32W PF:1.000 Freq:0Hz Lamp Flux:788.597x1 lm		
NAME: SF24-24V-2835-288-U2-2500K	TYPE:	WEIGHT:
SPEC.:	DIM.: Length=1m	SERIAL No.:
MFR.: OLympia lighting	SUR.:	Shielding Angle:



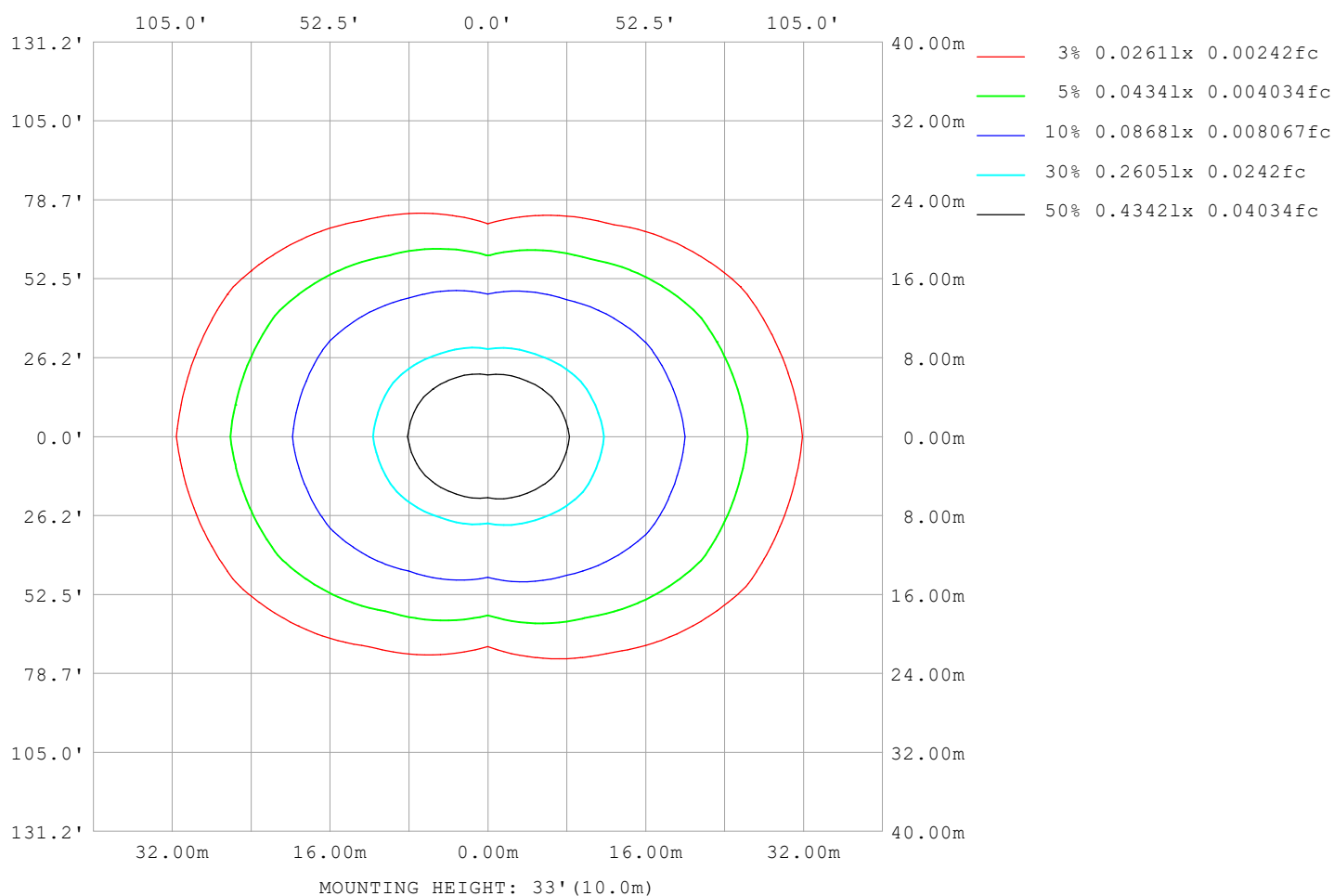
Note: The Curves indicate the illuminated area and the average illumination when the luminaire is at different distance.

C Range: 0 - 360DEG
C Interval: 30.0DEG
Test Speed: HIGH
Temperature: 25.3°C
Operators:
Test Date: 2025-03-03

γ Range: 0 - 180DEG
γ Interval: 1.0DEG
Test System: EVERFINE GO-2000B_V1 SYSTEM V2.00.488
Humidity: 65.0%
Test Distance: 6.360m [K=1.0000]
Remarks:

ISOLUX DIAGRAM

Test:U:24.00V I:0.6799A P:16.32W PF:1.000 Freq:0Hz Lamp Flux:788.597x1 lm		
NAME: SF24-24V-2835-288-U2-2500K	TYPE:	WEIGHT:
SPEC.:	DIM.: Length=1m	SERIAL No.:
MFR.: OLympia lighting	SUR.:	Shielding Angle:



C Range: 0 - 360DEG
C Interval: 30.0DEG
Test Speed: HIGH
Temperature: 25.3°C
Operators:
Test Date: 2025-03-03

γ Range: 0 - 180DEG
γ Interval: 1.0DEG
Test System: EVERFINE GO-2000B_V1 SYSTEM V2.00.488
Humidity: 65.0%
Test Distance: 6.360m [K=1.0000]
Remarks:

LED Avg.L Report

Test:U:24.00V I:0.6799A P:16.32W PF:1.000 Freq:0Hz Lamp Flux:788.597x1 lm		
NAME: SF24-24V-2835-288-U2-2500K	TYPE:	WEIGHT:
SPEC.:	DIM.: Length=1m	SERIAL No.:
MFR.: OLympia lighting	SUR.:	Shielding Angle:

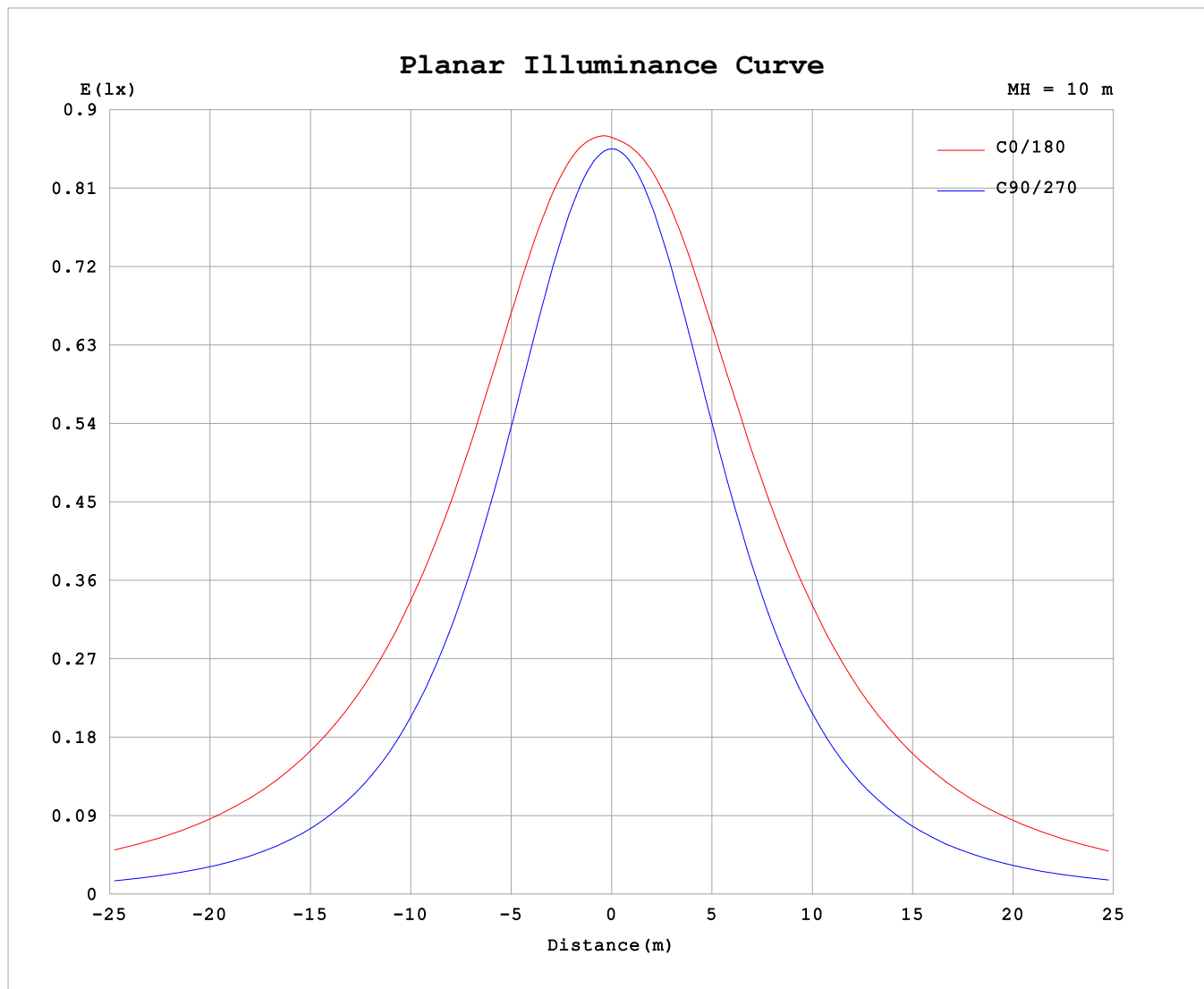
AvgL	cd/m2
L_0~180 (65) av	9358
L_0~180 (75) av	15243
L_0~180 (85) av	44884
L_90~270 (65) av	3405
L_90~270 (75) av	3540
L_90~270 (85) av	4561
L_45 (65) av	6746
L_45 (75) av	10379
L_45 (85) av	29423

Standard: GB/T 29293-2012

C Range: 0 - 360DEG
C Interval: 30.0DEG
Test Speed: HIGH
Temperature:25.3℃
Operators:
Test Date:2025-03-03

γ Range: 0 - 180DEG
γ Interval: 1.0DEG
Test System:EVERFINE GO-2000B_V1 SYSTEM V2.00.488
Humidity:65.0%
Test Distance:6.360m [K=1.0000]
Remarks:

Planar Illuminance Curve



C Range: 0 - 360DEG
C Interval: 30.0DEG
Test Speed: HIGH
Temperature: 25.3 °C
Operators:
Test Date: 2025-03-03

γ Range: 0 - 180DEG
 γ Interval: 1.0DEG
Test System: EVERFINE GO-2000B_V1 SYSTEM V2.00.488
Humidity: 65.0%
Test Distance: 6.360m [K=1.0000]
Remarks:

LUMINOUS DISTRIBUTION INTENSITY DATA

Test:U:24.00V I:0.6799A P:16.32W PF:1.000 Freq:0Hz Lamp Flux:788.597x1 lm																	
NAME: SF24-24V-2835-288-U2-2500K									TYPE:						WEIGHT:		
SPEC.:									DIM.: Length=1m						SERIAL No.:		
MFR.: Olym pia lighting									SUR.:						Shielding Angle:		

Table--1

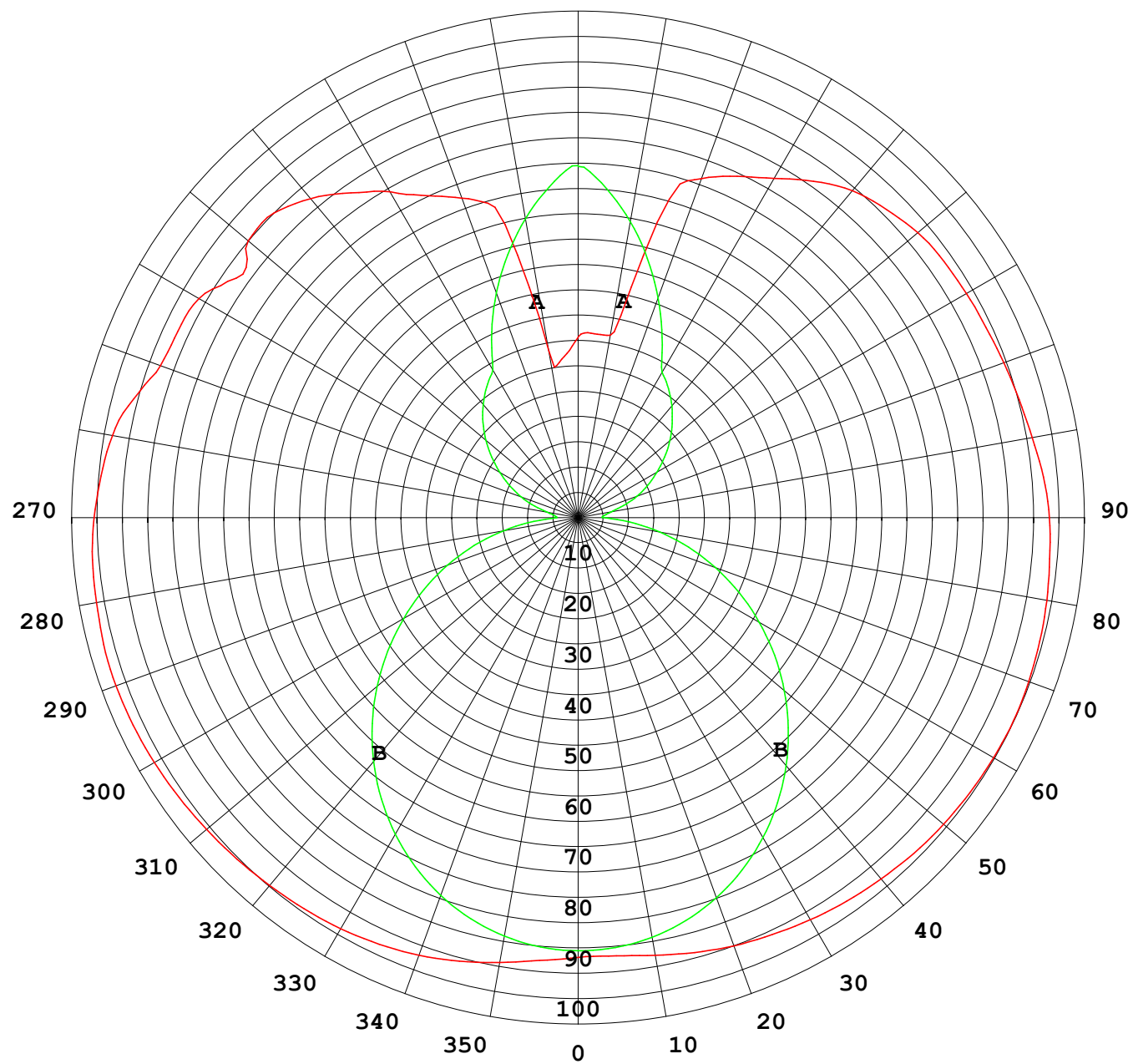
UNIT: cd

C (DEG) γ (DEG)	0	30	60	90	120	150	180	210	240	270	300	330						
0	85.9	85.9	85.9	85.9	85.9	85.9	85.9	85.9	85.9	85.9	85.9	85.9						
5	86.8	86.4	85.8	85.5	85.7	86.3	86.0	86.2	85.8	85.6	85.8	86.3						
10	88.3	87.2	85.4	84.3	85.3	86.9	86.8	86.7	85.6	84.5	85.4	87.0						
15	89.7	88.1	84.7	82.4	84.3	87.4	88.0	87.1	84.8	82.7	84.5	87.8						
20	91.0	88.7	83.5	79.7	82.8	87.5	89.0	87.2	83.6	80.2	83.1	88.3						
25	92.0	89.0	81.8	76.5	80.7	87.3	89.9	87.2	81.8	77.1	81.3	88.5						
30	92.7	88.9	79.6	72.5	78.2	86.8	90.7	87.1	79.4	73.3	78.9	88.3						
35	93.3	88.6	76.8	68.1	75.1	86.1	91.5	86.8	76.5	69.0	76.0	87.9						
40	93.8	88.1	73.7	63.2	71.5	85.4	92.1	86.4	73.1	64.2	72.8	87.2						
45	94.3	87.5	70.2	57.8	67.6	84.5	92.8	85.8	69.6	59.0	69.1	86.3						
50	94.8	86.8	66.5	52.1	63.5	83.7	93.2	85.2	65.9	53.4	65.3	85.4						
55	95.2	86.0	62.4	46.1	59.1	82.8	93.5	84.6	62.1	47.6	61.2	84.4						
60	95.7	85.3	58.4	40.0	54.9	81.7	93.8	83.8	58.2	41.5	56.9	83.5						
65	95.9	84.8	54.5	33.8	50.8	80.7	93.9	83.0	54.6	35.3	52.8	82.9						
70	96.1	84.2	51.0	27.6	47.0	79.8	93.7	82.1	51.2	29.0	49.0	82.2						
75	96.0	83.4	48.1	21.3	43.7	78.6	93.4	81.1	48.1	22.7	45.7	81.6						
80	95.6	82.6	45.7	15.0	40.8	77.6	93.0	80.2	45.3	16.4	43.0	80.7						
85	95.3	81.9	43.8	8.85	38.4	76.8	92.5	79.4	42.8	10.2	40.7	79.7						
90	94.6	81.3	42.3	4.25	36.7	76.3	92.1	78.8	41.1	4.99	39.1	79.1						
95	93.6	80.5	40.9	4.67	36.3	75.8	91.3	78.2	40.7	5.19	37.9	78.5						
100	92.4	78.5	34.8	6.14	37.2	75.1	90.1	77.5	41.2	6.66	32.4	76.9						
105	89.9	74.2	32.7	8.91	38.7	74.7	89.2	77.0	42.3	9.32	30.9	73.7						
110	86.9	71.5	32.1	12.0	41.2	74.6	88.5	76.7	44.4	12.4	31.4	70.3						
115	86.3	69.0	32.6	14.9	44.4	74.9	88.0	76.8	47.3	15.3	34.9	67.6						
120	85.6	67.1	34.2	17.9	46.8	75.6	87.6	77.1	50.1	18.1	37.5	70.2						
125	81.6	72.6	32.4	20.9	48.7	76.7	87.3	77.8	51.6	21.0	37.8	71.4						
130	84.2	71.3	31.2	23.9	51.2	77.2	86.7	77.8	53.4	23.8	39.7	68.0						
135	84.1	62.5	30.2	26.7	53.5	76.9	85.2	76.9	55.5	26.4	39.0	64.5						
140	81.4	53.1	30.8	29.3	56.0	75.0	83.4	75.6	57.4	29.0	38.4	61.2						
145	77.5	43.6	32.2	31.7	58.4	73.0	80.3	73.6	59.5	31.3	37.8	54.8						
150	73.5	39.1	33.3	33.9	60.5	71.7	76.6	71.9	61.3	33.4	37.1	48.2						
155	69.4	33.7	35.8	40.6	61.8	70.8	73.6	70.9	62.5	39.5	38.0	44.0						
160	66.4	31.4	43.8	47.5	63.1	70.0	70.5	70.0	63.3	46.4	44.4	40.1						
165	62.8	34.1	51.4	54.0	64.7	69.4	59.8	69.3	64.8	53.2	51.2	38.7						
170	33.0	42.8	58.2	60.2	65.5	69.5	36.2	69.1	65.7	59.7	57.9	45.7						
175	31.6	54.7	64.2	65.9	67.5	69.5	36.1	68.9	67.3	65.5	64.1	55.5						
180	35.2	64.9	69.4	69.8	69.6	65.2	35.4	64.8	69.6	69.7	69.7	65.0						

C Range: 0 - 360DEG
C Interval: 30.0DEG
Test Speed: HIGH
Temperature:25.3℃
Operators:
Test Date:2025-03-03

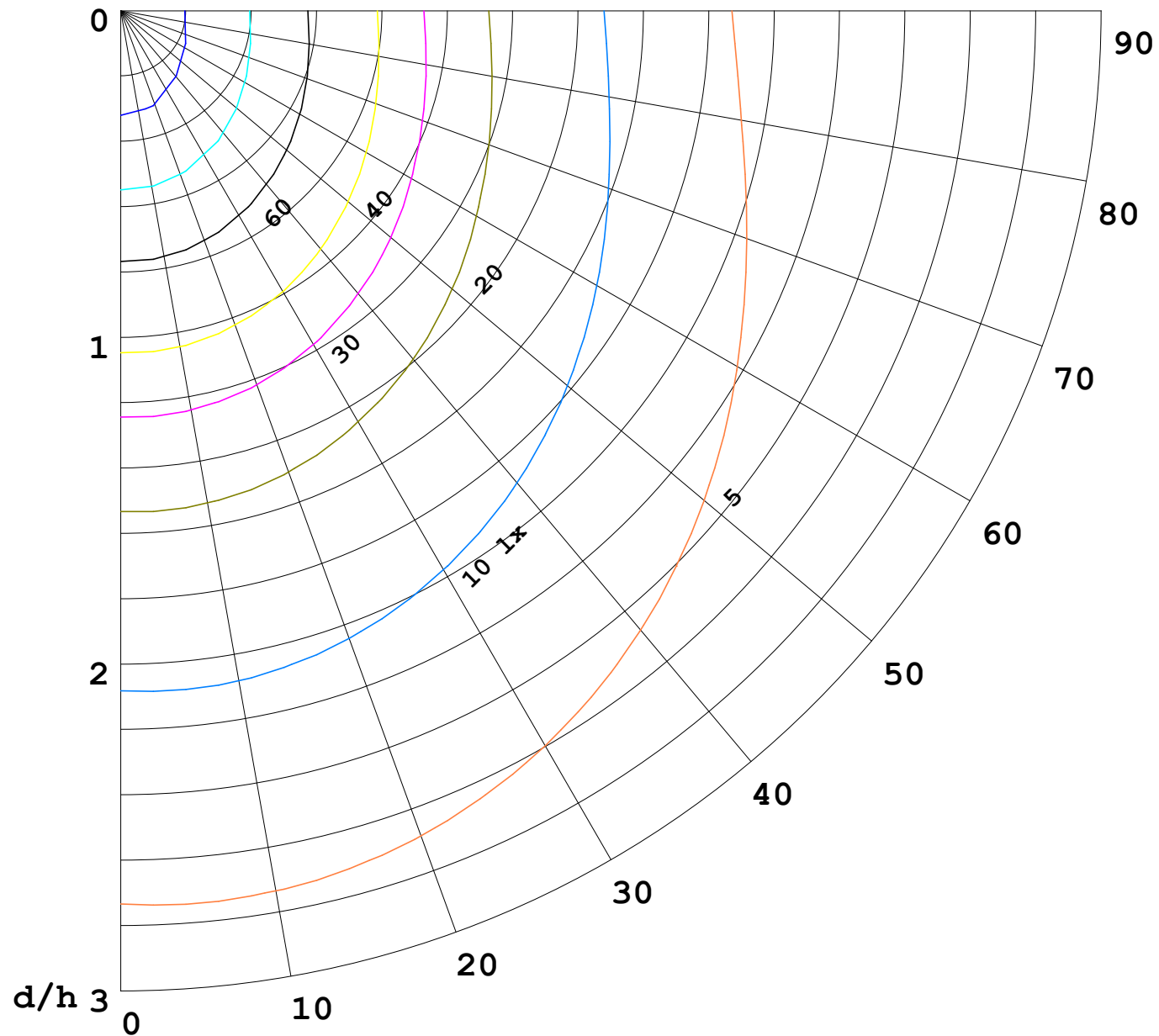
γ Range: 0 - 180DEG
γ Interval: 1.0DEG
Test System:EVERFINE GO-2000B_V1 SYSTEM V2.00.488
Humidity:65.0%
Test Distance:6.360m [K=1.0000]
Remarks:

I (cd)



1000 lm

$\kappa = 1$



F = 1000 lm
 K = 0.7
 Hcc = 0.8 m
 Hfc = 0.0 m
 Eave = 100 lx

	Pcc	Pw	Pfc
—————	70	50	30
—————	50	30	20

