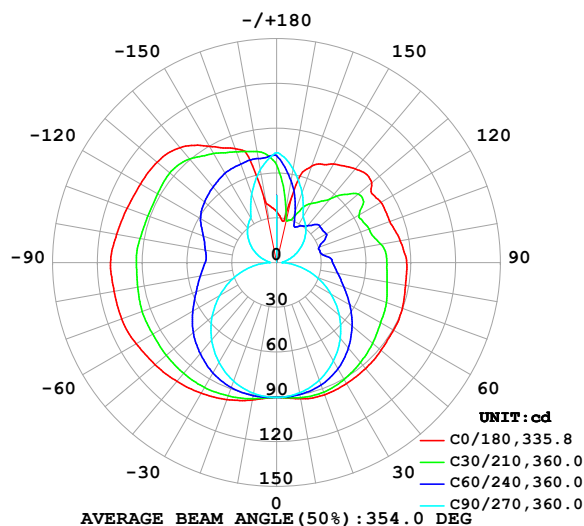


LUMINAIRE PHOTOMETRIC TEST REPORT

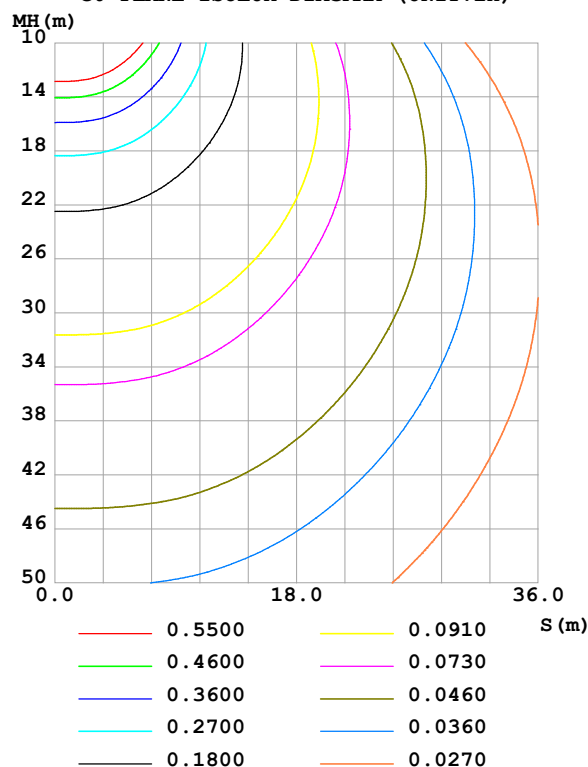
Test:U:24.00V I:0.6985A P:16.76W PF:1.000 Freq:0Hz Lamp Flux:839.032x1 lm		
NAME: SF24-24V-2835-288-U2-6500K	TYPE:	WEIGHT:
SPEC.:	DIM.: Length=1m	SERIAL No.:
MFR.: Olym pia lighting	SUR.:	Shielding Angle:

DATA OF LAMP		PHOTOMETRIC DATA				Eff: 50.05 lm/W
MODEL	2835	I _{max} (cd)	111.3	S/MH(C0/180)	1.73	
NOMINAL POWER(W)	16	LOR(%)	100.0	S/MH(C90/270)	1.27	
RATED VOLTAGE(V)	24	TOTAL FLUX(lm)	839.03	η UP,DN(C0-180)	21.4,27.1	
NOMINAL FLUX(lm)	839.032	CIE CLASS	DIFFUSE	η UP,DN(C180-360)	23.1,28.5	
LAMPS INSIDE	1	η up (%)	44.5	CIBSE SHR NOM	1.75	
TEST VOLTAGE(V)		η down (%)	55.5	CIBSE SHR MAX	1.75	

LUMINOUS INTENSITY DISTRIBUTION DIAGRAM



C0 PLANE ISOLUX DIAGRAM (UNIT:lx)



C Range: 0 - 360DEG
C Interval: 30.0DEG
Test Speed: HIGH
Temperature:25.3℃
Operators:
Test Date:2025-03-03

γ Range: 0 - 180DEG
γ Interval: 1.0DEG
Test System:EVERFINE GO-2000B_V1 SYSTEM V2.00.488
Humidity:65.0%
Test Distance:6.360m [K=1.0000]
Remarks:

ZONAL FLUX DIAGRAM

ZONAL FLUX DIAGRAM:

γ	C0	C45	C90	C135	C180	C225	C270	C315	γ	Φ zone	Φ total	%lum, lamp
10	92.65	90.80	88.63	91.27	93.49	91.58	88.99	90.62	0- 10	8.664	8.664	1.03,1.03
20	94.27	89.82	83.76	91.31	97.65	92.10	84.51	89.70	10- 20	25.78	34.44	4.1,4.1
30	93.64	86.33	76.19	89.69	101.1	91.02	77.28	86.35	20- 30	41.33	75.77	9.03,9.03
40	92.69	81.14	66.40	86.52	103.9	88.33	67.78	81.30	30- 40	53.95	129.7	15.5,15.5
50	91.42	75.09	54.83	82.63	106.4	84.81	56.52	75.29	40- 50	62.95	192.7	23,23
60	90.55	68.63	42.04	77.94	108.7	80.44	44.01	68.80	50- 60	68.07	260.7	31.1,31.1
70	89.64	63.18	28.66	73.92	110.5	76.68	30.88	63.11	60- 70	69.94	330.7	39.4,39.4
80	87.69	58.52	15.22	70.44	110.6	73.29	17.50	58.18	70- 80	68.98	399.7	47.6,47.6
90	87.14	55.82	3.770	68.32	111.3	71.02	5.078	54.75	80- 90	66.16	465.8	55.5,55.5
100	84.08	51.27	5.700	68.30	108.8	70.79	6.859	50.47	90-100	63.63	529.5	63.1,63.1
110	80.74	48.18	11.31	70.16	106.6	72.08	12.57	47.28	100-110	60.32	589.8	70.3,70.3
120	80.78	51.28	17.76	74.11	105.3	75.56	18.63	51.57	110-120	58.41	648.2	77.3,77.3
130	83.32	54.79	24.42	76.99	104.6	78.35	24.81	53.29	120-130	55.93	704.1	83.9,83.9
140	82.12	44.02	30.51	76.20	100.7	78.47	30.31	47.32	130-140	48.71	752.8	89.7,89.7
150	76.24	36.77	35.61	74.83	89.87	76.87	34.77	40.25	140-150	37.45	790.3	94.2,94.2
160	68.83	34.01	49.90	73.65	81.25	74.68	48.87	40.04	150-160	26.60	816.9	97.4,97.4
170	28.44	46.08	63.75	73.56	40.05	73.19	63.21	50.97	160-170	16.45	833.3	99.3,99.3
180	34.15	68.52	73.61	71.24	34.28	68.50	73.52	71.21	170-180	5.698	839.0	100,100
DEG	LUMINOUS INTENSITY:cd									UNIT:lm		

Conical surface Flux(90deg): 160.3 lm

%lum = 19.1%

%lamp = 19.1%

Conical surface Flux(130deg): 295.65 lm

%lum = 35.2%

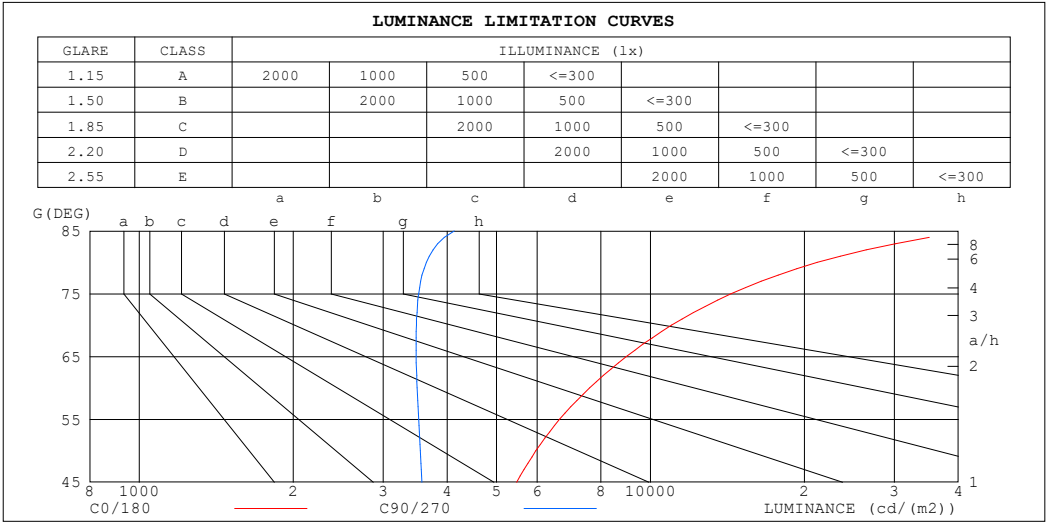
%lamp = 35.2%

C Range: 0 - 360DEG
 C Interval: 30.0DEG
 Test Speed: HIGH
 Temperature:25.3℃
 Operators:
 Test Date:2025-03-03

γ Range: 0 - 180DEG
 γ Interval: 1.0DEG
 Test System:EVERFINE GO-2000B_V1 SYSTEM V2.00.488
 Humidity:65.0%
 Test Distance:6.360m [K=1.0000]
 Remarks:

LUMINANCE LIMITATION CURVES

Test:U:24.00V I:0.6985A P:16.76W PF:1.000 Freq:0Hz Lamp Flux:839.032x1 lm		
NAME: SF24-24V-2835-288-U2-6500K	TYPE:	WEIGHT:
SPEC.:	DIM.: Length=1m	SERIAL No.:
MFR.: OLympia lighting	SUR.:	Shielding Angle:



LUMINANCE cd/(m2)		
G (DEG)	C0/180	C90/270
85	42084	4132
80	21200	3644
75	14376	3522
70	11003	3483
65	8974	3480
60	7602	3495
55	6643	3518
50	5971	3546
45	5473	3573

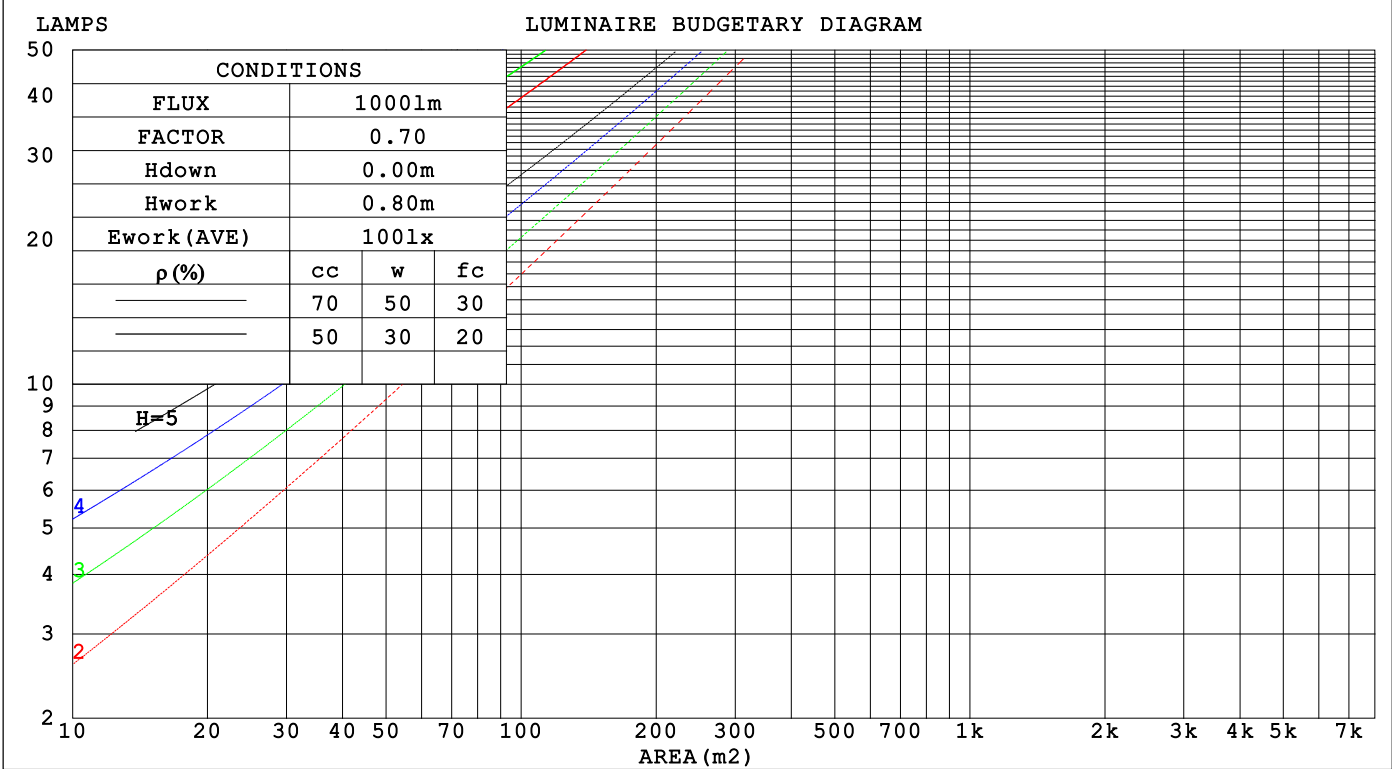
C Range: 0 - 360DEG
C Interval: 30.0DEG
Test Speed: HIGH
Temperature:25.3℃
Operators:
Test Date:2025-03-03

γ Range: 0 - 180DEG
γ Interval: 1.0DEG
Test System:EVERFINE GO-2000B_V1 SYSTEM V2.00.488
Humidity:65.0%
Test Distance:6.360m [K=1.0000]
Remarks:

CU AND LUMINAIRE BUDGETARY ESTIMATE DIAGRAM

Test:U:24.00V I:0.6985A P:16.76W PF:1.000 Freq:0Hz		
Lamp Flux:839.032x1 lm		
NAME: SF24-24V-2835-288-U2-6500K	TYPE:	WEIGHT:
SPEC.:	DIM.: Length=1m	SERIAL No.:
MFR.: OLYMPIA lighting	SUR.:	Shielding Angle:

pcc	80%			70%			50%			30%			10%			0
pw	50%	30%	10%	50%	30%	10%	50%	30%	10%	50%	30%	10%	50%	30%	10%	0
pfc	20%			20%			20%			20%			20%			0
RCR	RCR:Room Cavity Ratio			Coefficients of Utilization(CU)												
0.0	1.08	1.08	1.08	1.01	1.01	1.01	.86	.86	.86	.73	.73	.73	.61	.61	.61	.56
1.0	.89	.84	.79	.83	.78	.74	.70	.67	.63	.59	.56	.53	.48	.46	.44	.39
2.0	.76	.68	.62	.70	.63	.58	.59	.54	.50	.50	.45	.42	.40	.37	.35	.30
3.0	.66	.57	.50	.61	.53	.47	.51	.45	.40	.43	.38	.34	.35	.31	.28	.24
4.0	.57	.48	.41	.53	.45	.39	.45	.39	.33	.37	.32	.28	.30	.26	.23	.20
5.0	.51	.42	.35	.47	.39	.33	.40	.33	.28	.33	.28	.24	.27	.23	.20	.16
6.0	.45	.36	.30	.42	.34	.28	.36	.29	.24	.30	.25	.21	.24	.20	.17	.14
7.0	.41	.32	.26	.38	.30	.24	.32	.26	.21	.27	.22	.18	.22	.18	.15	.12
8.0	.37	.28	.23	.34	.27	.21	.29	.23	.18	.25	.19	.16	.20	.16	.13	.11
9.0	.33	.25	.20	.31	.24	.19	.27	.21	.16	.23	.18	.14	.19	.15	.12	.09
10.0	.31	.23	.18	.29	.21	.17	.25	.19	.15	.21	.16	.13	.17	.13	.10	.08



C Range: 0 - 360DEG
C Interval: 30.0DEG
Test Speed: HIGH
Temperature:25.3℃
Operators:
Test Date:2025-03-03

γ Range: 0 - 180DEG
γ Interval: 1.0DEG
Test System:EVERFINE GO-2000B_V1 SYSTEM V2.00.488
Humidity:65.0%
Test Distance:6.360m [K=1.0000]
Remarks:

WEC AND CCEC

Test:U:24.00V I:0.6985A P:16.76W PF:1.000 Freq:0Hz Lamp Flux:839.032x1 lm		
NAME: SF24-24V-2835-288-U2-6500K	TYPE:	WEIGHT:
SPEC.:	DIM.: Length=1m	SERIAL No.:
MFR.: OLympia lighting	SUR.:	Shielding Angle:

pcc	80%			70%			50%			30%			10%			0														
pw	50%	30%	10%	50%	30%	10%	50%	30%	10%	50%	30%	10%	50%	30%	10%	0														
pfc	20%			20%			20%			20%			20%			0														
RCR	RCR:Room Cavity Ratio															Wall Exitance Coefficients(WEC)														
0.0																														
1.0	.385	.219	.069	.364	.208	.066	.325	.187	.060	.289	.167	.054	.257	.149	.048															
2.0	.327	.179	.055	.308	.170	.052	.273	.152	.047	.240	.135	.042	.210	.119	.037															
3.0	.288	.153	.046	.271	.145	.044	.239	.129	.039	.209	.114	.035	.181	.100	.031															
4.0	.258	.134	.039	.243	.127	.038	.213	.113	.034	.186	.100	.030	.160	.087	.026															
5.0	.234	.119	.035	.220	.113	.033	.193	.100	.030	.167	.088	.026	.144	.077	.023															
6.0	.214	.107	.031	.201	.102	.029	.176	.090	.026	.153	.079	.023	.131	.069	.020															
7.0	.198	.098	.028	.185	.092	.026	.162	.082	.024	.140	.072	.021	.120	.062	.018															
8.0	.183	.089	.025	.172	.085	.024	.150	.075	.021	.130	.066	.019	.111	.057	.017															
9.0	.171	.082	.023	.160	.078	.022	.140	.069	.020	.121	.061	.017	.103	.052	.015															
10.0	.160	.076	.021	.150	.072	.020	.131	.064	.018	.113	.056	.016	.097	.049	.014															

pcc	80%			70%			50%			30%			10%			0
pw	50%	30%	10%	50%	30%	10%	50%	30%	10%	50%	30%	10%	50%	30%	10%	0
pfc	20%			20%			20%			20%			20%			0
RCR	RCR:Room Cavity Ratio						Ceiling Cavity Exitance Coefficients (CCEC)									
0.0	.529	.529	.529	.452	.452	.452	.309	.309	.309	.177	.177	.177	.057	.057	.057	
1.0	.527	.497	.470	.451	.427	.405	.309	.294	.280	.178	.170	.163	.057	.055	.053	
2.0	.521	.476	.438	.446	.410	.378	.306	.283	.264	.176	.165	.155	.057	.053	.050	
3.0	.514	.460	.418	.441	.397	.362	.302	.276	.254	.175	.161	.150	.056	.052	.049	
4.0	.506	.449	.404	.435	.388	.351	.299	.270	.247	.173	.158	.146	.056	.052	.048	
5.0	.499	.439	.395	.429	.380	.344	.295	.266	.243	.171	.156	.144	.055	.051	.047	
6.0	.492	.432	.389	.423	.374	.338	.292	.262	.239	.169	.154	.142	.055	.050	.047	
7.0	.485	.426	.384	.418	.369	.335	.289	.259	.237	.168	.152	.141	.054	.050	.047	
8.0	.479	.420	.380	.412	.365	.332	.285	.256	.235	.166	.151	.140	.054	.050	.046	
9.0	.473	.416	.377	.408	.361	.329	.282	.254	.234	.164	.150	.139	.053	.049	.046	
10.0	.468	.412	.375	.403	.358	.327	.280	.252	.233	.163	.149	.139	.053	.049	.046	

C Range: 0 - 360DEG
C Interval: 30.0DEG
Test Speed: HIGH
Temperature:25.3℃
Operators:
Test Date:2025-03-03

γ Range: 0 - 180DEG
γ Interval: 1.0DEG
Test System:EVERFINE GO-2000B_V1 SYSTEM V2.00.488
Humidity:65.0%
Test Distance:6.360m [K=1.0000]
Remarks:

UGR(Unified Glare Rating) Table

Test:U:24.00V I:0.6985A P:16.76W PF:1.000 Freq:0Hz Lamp Flux:839.032x1 lm											
NAME: SF24-24V-2835-288-U2-6500K						TYPE:		WEIGHT:			
SPEC.:						DIM.: Length=1m		SERIAL No.:			
MFR.: OLympia lighting						SUR.:		Shielding Angle:			
ceiling/cavity	0.7	0.7	0.5	0.5	0.3	0.7	0.7	0.5	0.5	0.3	
walls	0.5	0.3	0.5	0.3	0.3	0.5	0.3	0.5	0.3	0.3	
working plane	0.2	0.2	0.2	0.2	0.2	0.2	0.2	0.2	0.2	0.2	
Room dimensions		Viewed crosswise					Viewed endwise				
x = 2H y = 2H	2H	18.5	19.6	19.3	20.4	21.5	15.3	16.4	16.1	17.3	18.3
	3H	21.7	22.7	22.5	23.5	24.6	17.1	18.1	17.9	19.0	20.0
	4H	23.5	24.4	24.4	25.3	26.4	17.9	18.9	18.8	19.7	20.8
	6H	25.5	26.4	26.4	27.3	28.4	18.6	19.5	19.5	20.4	21.5
	8H	26.7	27.5	27.5	28.4	29.5	18.9	19.8	19.8	20.7	21.8
	12H	28.0	28.8	28.9	29.7	30.8	19.2	20.0	20.1	20.9	22.0
4H	2H	19.0	19.9	19.8	20.8	21.9	16.8	17.8	17.7	18.6	19.7
	3H	22.5	23.3	23.3	24.2	25.3	18.8	19.6	19.7	20.5	21.7
	4H	24.5	25.2	25.4	26.1	27.3	19.8	20.6	20.7	21.5	22.6
	6H	26.7	27.4	27.6	28.3	29.5	20.8	21.4	21.7	22.4	23.5
	8H	28.0	28.6	28.9	29.5	30.7	21.2	21.8	22.1	22.7	23.9
	12H	29.4	30.0	30.4	30.9	32.2	21.5	22.1	22.4	23.0	24.3
8H	4H	24.8	25.4	25.7	26.4	27.6	21.3	21.9	22.2	22.9	24.1
	6H	27.4	27.9	28.3	28.8	30.1	22.6	23.2	23.6	24.1	25.4
	8H	28.8	29.3	29.8	30.3	31.5	23.3	23.7	24.2	24.7	26.0
	12H	30.6	31.0	31.5	32.0	33.2	23.9	24.3	24.8	25.3	26.5
12H	4H	24.8	25.4	25.7	26.3	27.6	21.9	22.4	22.8	23.4	24.6
	6H	27.5	27.9	28.4	28.9	30.2	23.4	23.9	24.4	24.9	26.1
	8H	29.1	29.5	30.1	30.5	31.8	24.3	24.7	25.3	25.7	27.0
Variations with the observer position at spacings(CIE Pub.117):											
S = 1.0H		+ 0.1 / - 0.1					+ 0.1 / - 0.1				
1.5H		+ 0.2 / - 0.3					+ 0.2 / - 0.3				
2.0H		+ 0.3 / - 0.3					+ 0.3 / - 0.4				

CIE Pub.117, 839.0 lm Total Lamp Luminous Flux Correct (8log(F/F0) = -0.6)
Area: 0.024 m2

C Range: 0 - 360DEG
C Interval: 30.0DEG
Test Speed: HIGH
Temperature:25.3℃
Operators:
Test Date:2025-03-03

γ Range: 0 - 180DEG
γ Interval: 1.0DEG
Test System:EVERFINE GO-2000B_V1 SYSTEM V2.00.488
Humidity:65.0%
Test Distance:6.360m [K=1.0000]
Remarks:

UTILIZATION FACTORS TABLE

Test:U:24.00V I:0.6985A P:16.76W PF:1.000 Freq:0Hz Lamp Flux:839.032x1 lm		
NAME: SF24-24V-2835-288-U2-6500K	TYPE:	WEIGHT:
SPEC.:	DIM.: Length=1m	SERIAL No.:
MFR.: OLympia lighting	SUR.:	Shielding Angle:

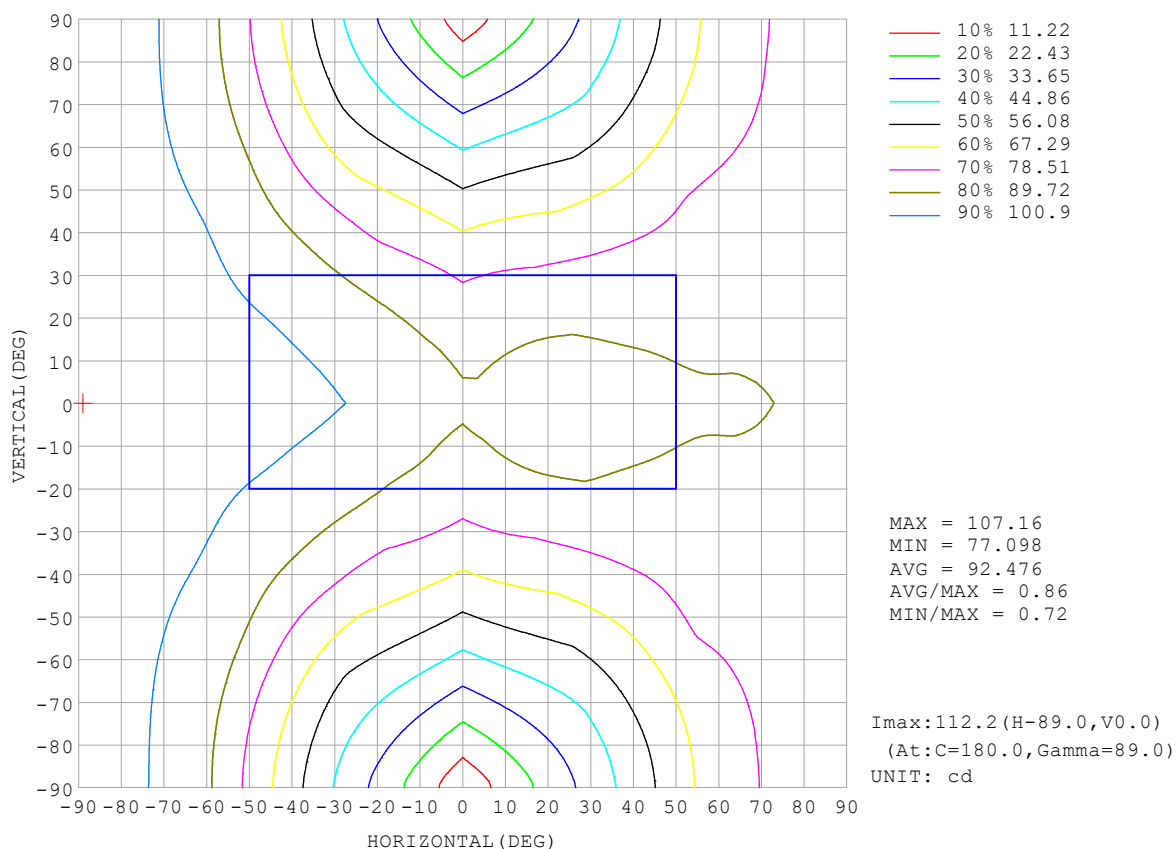
REFLECTANCE										
Ceiling	0.8	0.8	0.8	0.7	0.7	0.7	0.5	0.5	0.5	0
Walls	0.7	0.5	0.3	0.7	0.5	0.3	0.7	0.5	0.3	0
Working plane	0.2	0.2	0.2	0.2	0.2	0.2	0.2	0.2	0.2	0
ROOM INDEX	UTILIZATION FACTORS (PERCENT) $k(RI) \times RCR = 5$									
$k = 0.60$	40	27	20	38	26	20	34	24	18	11
0.80	48	35	27	46	34	26	41	31	24	15
1.00	56	42	34	52	40	32	46	38	29	18
1.25	62	49	40	59	47	38	51	42	35	22
1.50	68	55	46	63	52	43	55	46	39	24
2.00	75	63	54	70	59	51	61	52	46	29
2.50	80	69	60	75	65	57	64	57	51	32
3.00	84	74	66	78	69	62	67	60	55	34
4.00	89	80	73	83	75	69	71	65	60	38
5.00	92	85	78	86	79	73	73	68	64	40
ROOM INDEX	UF (total)									Direct
According to DIN EN 13032-2 2004			Suspended					SHRNOM = 1.25		

C Range: 0 - 360DEG
 C Interval: 30.0DEG
 Test Speed: HIGH
 Temperature: 25.3 °C
 Operators:
 Test Date: 2025-03-03

γ Range: 0 - 180DEG
 γ Interval: 1.0DEG
 Test System: EVERFINE GO-2000B_V1 SYSTEM V2.00.488
 Humidity: 65.0%
 Test Distance: 6.360m [K=1.0000]
 Remarks:

ISOCANDELA DIAGRAM

Test:U:24.00V I:0.6985A P:16.76W PF:1.000 Freq:0Hz Lamp Flux:839.032x1 lm		
NAME: SF24-24V-2835-288-U2-6500K	TYPE:	WEIGHT:
SPEC.:	DIM.: Length=1m	SERIAL No.:
MFR.: OLympia lighting	SUR.:	Shielding Angle:

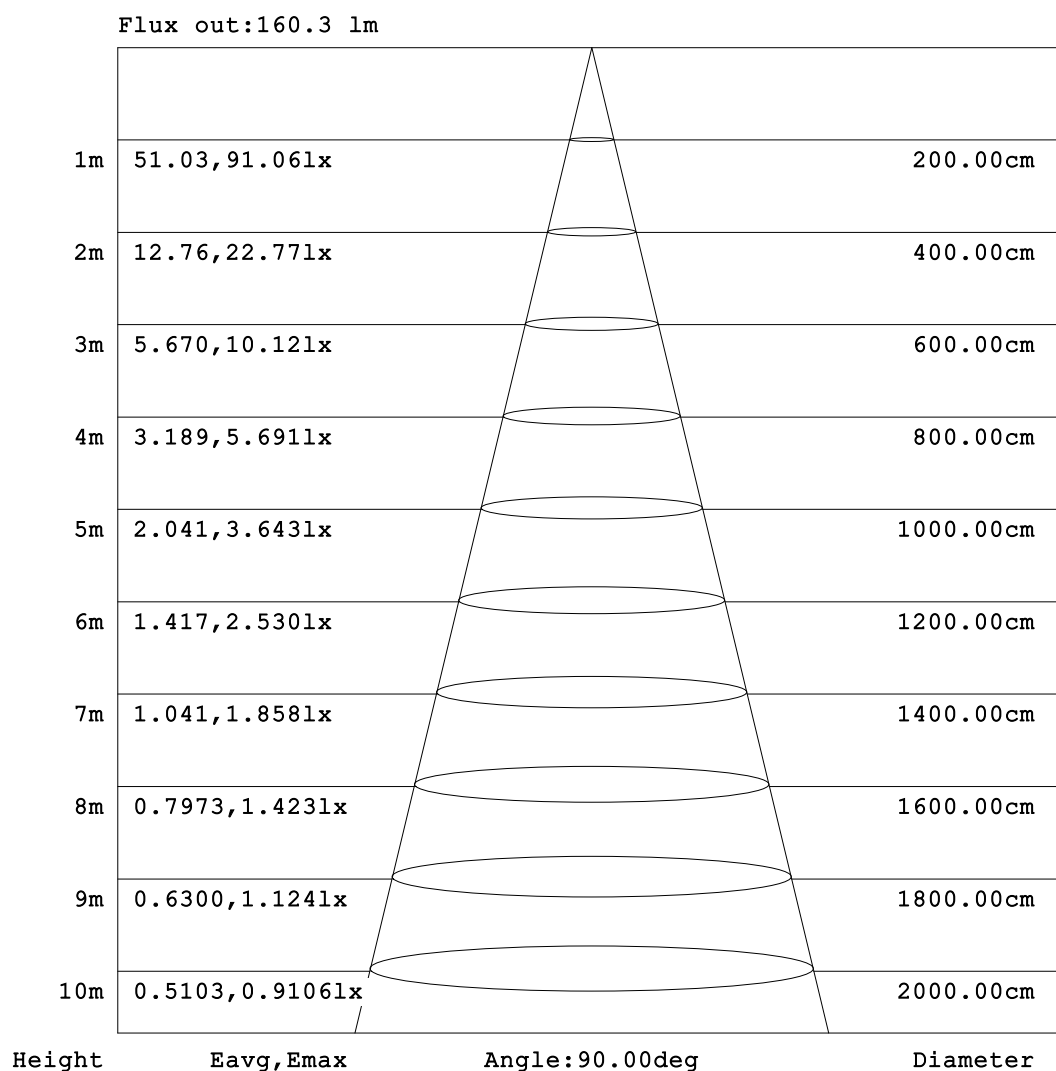


C Range: 0 - 360DEG
C Interval: 30.0DEG
Test Speed: HIGH
Temperature:25.3℃
Operators:
Test Date:2025-03-03

γ Range: 0 - 180DEG
γ Interval: 1.0DEG
Test System:EVERFINE GO-2000B_V1 SYSTEM V2.00.488
Humidity:65.0%
Test Distance:6.360m [K=1.0000]
Remarks:

AAI Figure

Test:U:24.00V I:0.6985A P:16.76W PF:1.000 Freq:0Hz Lamp Flux:839.032x1 lm		
NAME: SF24-24V-2835-288-U2-6500K	TYPE:	WEIGHT:
SPEC.:	DIM.: Length=1m	SERIAL No.:
MFR.: OLympia lighting	SUR.:	Shielding Angle:



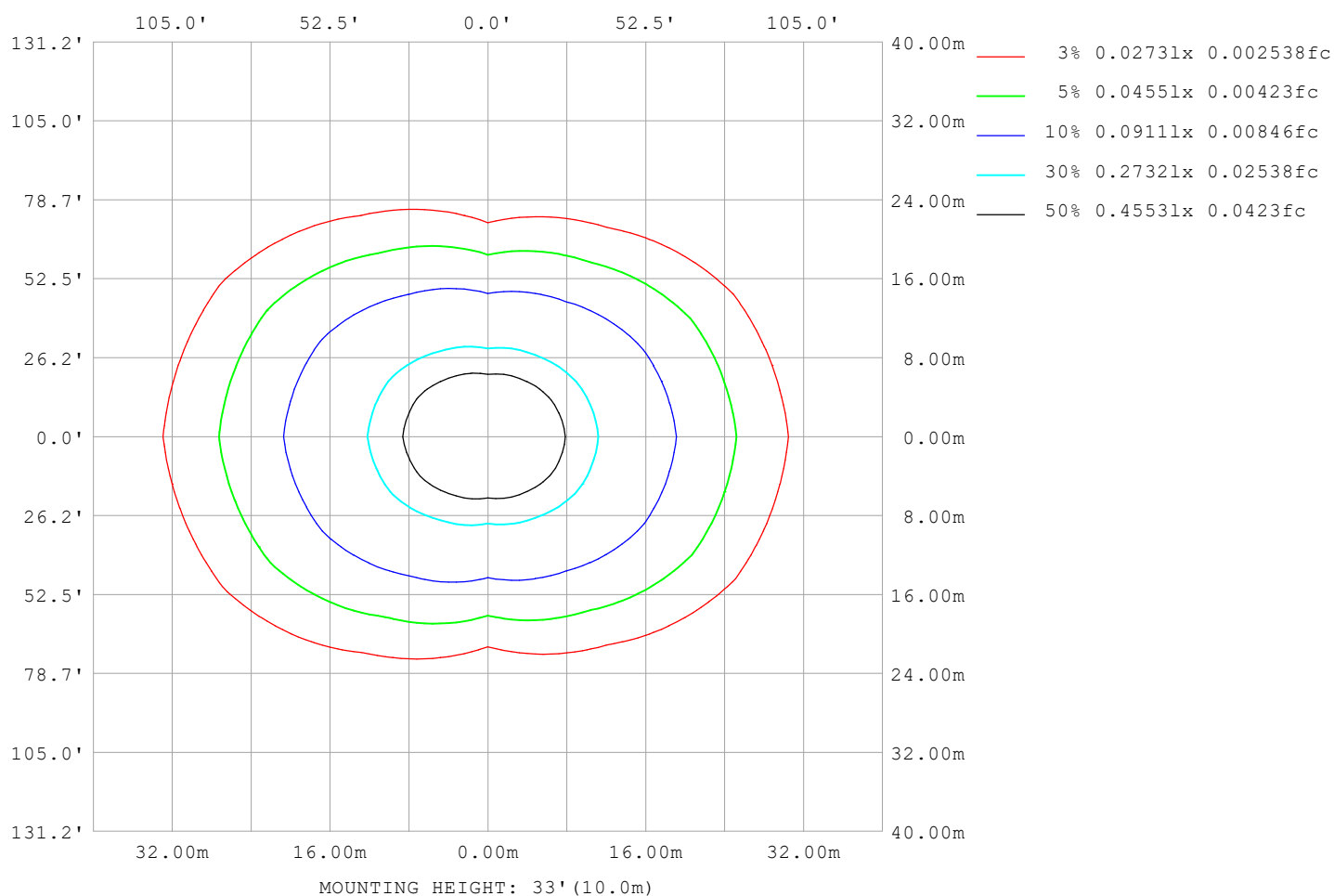
Note: The Curves indicate the illuminated area and the average illumination when the luminaire is at different distance.

C Range: 0 - 360DEG
C Interval: 30.0DEG
Test Speed: HIGH
Temperature: 25.3°C
Operators:
Test Date: 2025-03-03

γ Range: 0 - 180DEG
γ Interval: 1.0DEG
Test System: EVERFINE GO-2000B_V1 SYSTEM V2.00.488
Humidity: 65.0%
Test Distance: 6.360m [K=1.0000]
Remarks:

ISOLUX DIAGRAM

Test:U:24.00V I:0.6985A P:16.76W PF:1.000 Freq:0Hz Lamp Flux:839.032x1 lm		
NAME: SF24-24V-2835-288-U2-6500K	TYPE:	WEIGHT:
SPEC.:	DIM.: Length=1m	SERIAL No.:
MFR.: OLympia lighting	SUR.:	Shielding Angle:



C Range: 0 - 360DEG
C Interval: 30.0DEG
Test Speed: HIGH
Temperature: 25.3°C
Operators:
Test Date: 2025-03-03

γ Range: 0 - 180DEG
γ Interval: 1.0DEG
Test System: EVERFINE GO-2000B_V1 SYSTEM V2.00.488
Humidity: 65.0%
Test Distance: 6.360m [K=1.0000]
Remarks:

LED Avg.L Report

Test:U:24.00V I:0.6985A P:16.76W PF:1.000 Freq:0Hz Lamp Flux:839.032x1 lm		
NAME: SF24-24V-2835-288-U2-6500K	TYPE:	WEIGHT:
SPEC.:	DIM.: Length=1m	SERIAL No.:
MFR.: OLympia lighting	SUR.:	Shielding Angle:

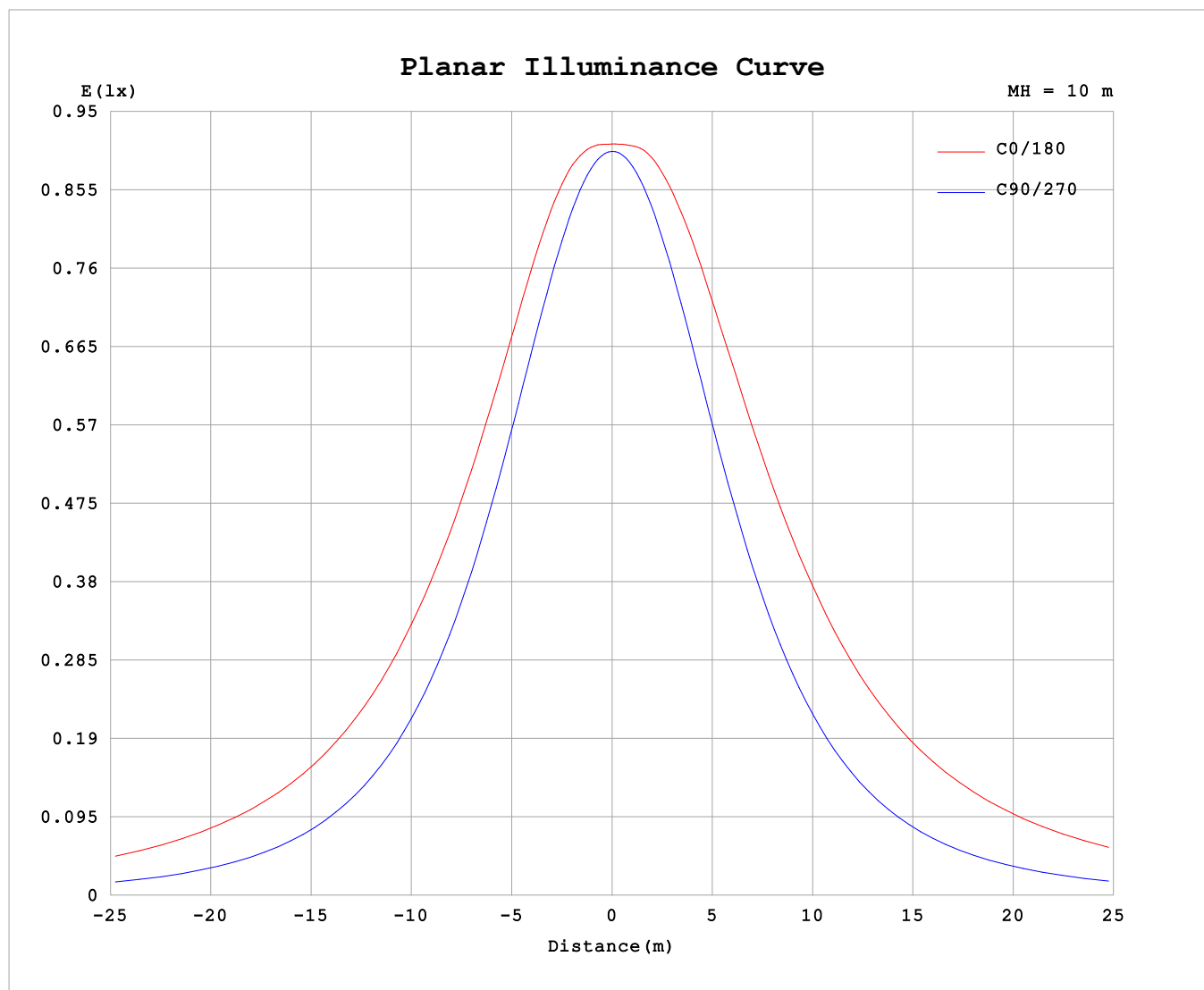
AvgL	cd/m2
L_0~180 (65) av	9877
L_0~180 (75) av	16029
L_0~180 (85) av	47412
L_90~270 (65) av	3593
L_90~270 (75) av	3712
L_90~270 (85) av	4669
L_45 (65) av	7088
L_45 (75) av	10904
L_45 (85) av	30880

Standard: GB/T 29293-2012

C Range: 0 - 360DEG
C Interval: 30.0DEG
Test Speed: HIGH
Temperature:25.3℃
Operators:
Test Date:2025-03-03

γ Range: 0 - 180DEG
γ Interval: 1.0DEG
Test System:EVERFINE GO-2000B_V1 SYSTEM V2.00.488
Humidity:65.0%
Test Distance:6.360m [K=1.0000]
Remarks:

Planar Illuminance Curve



C Range: 0 - 360DEG
C Interval: 30.0DEG
Test Speed: HIGH
Temperature: 25.3 °C
Operators:
Test Date: 2025-03-03

γ Range: 0 - 180DEG
 γ Interval: 1.0DEG
Test System: EVERFINE GO-2000B_V1 SYSTEM V2.00.488
Humidity: 65.0%
Test Distance: 6.360m [K=1.0000]
Remarks:

LUMINOUS DISTRIBUTION INTENSITY DATA

Test:U:24.00V I:0.6985A P:16.76W PF:1.000 Freq:0Hz Lamp Flux:839.032x1 lm		
NAME: SF24-24V-2835-288-U2-6500K	TYPE:	WEIGHT:
SPEC.:	DIM.: Length=1m	SERIAL No.:
MFR.: Olym pia lighting	SUR.:	Shielding Angle:

Table--1

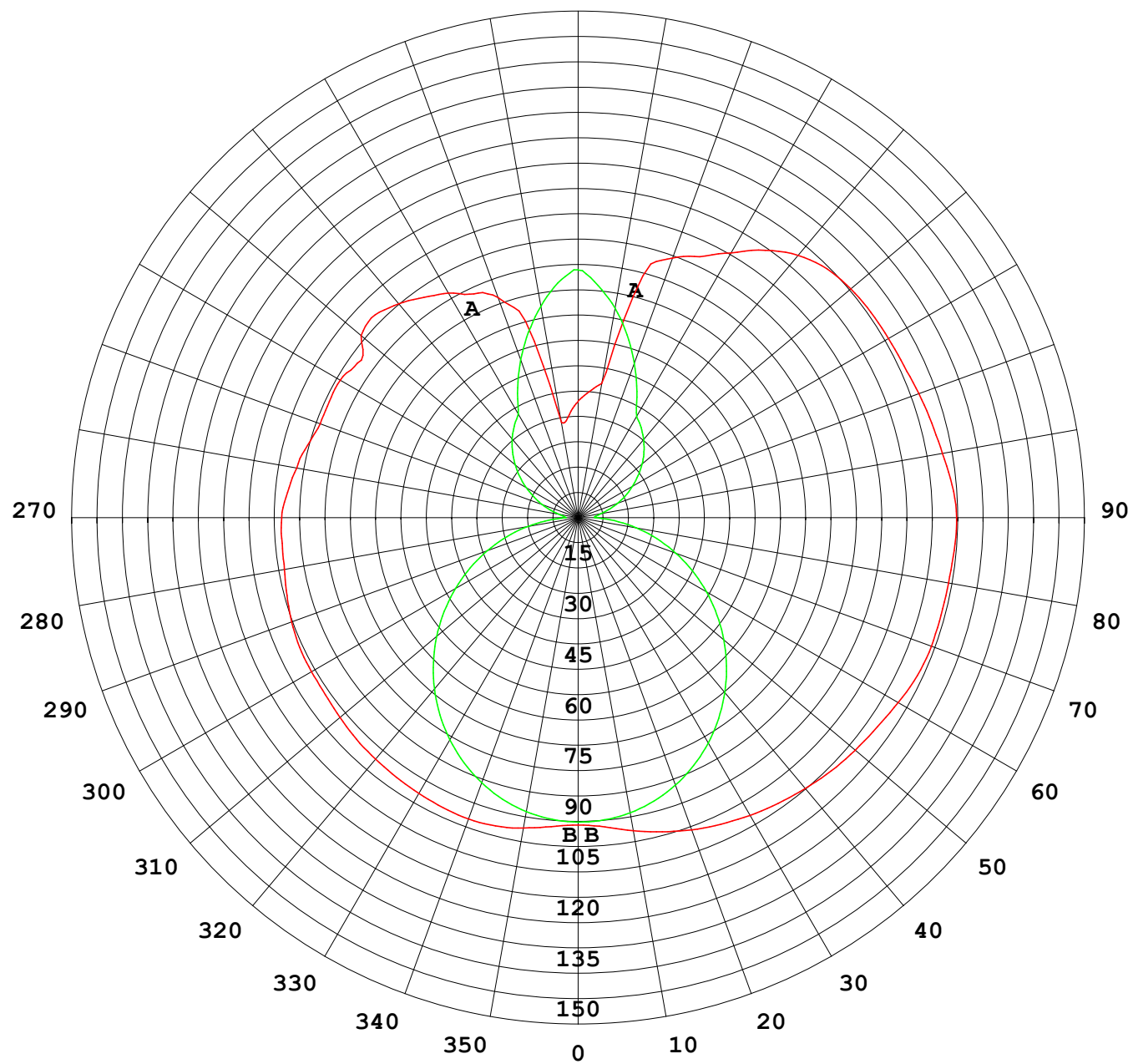
UNIT: cd

C (DEG) γ (DEG)	0	30	60	90	120	150	180	210	240	270	300	330						
0	90.4	90.4	90.4	90.4	90.4	90.4	90.4	90.4	90.4	90.4	90.4	90.4						
5	91.2	90.8	90.2	89.9	90.4	91.0	91.3	91.1	90.5	90.1	90.2	90.7						
10	92.7	91.9	89.7	88.6	90.2	92.4	93.5	92.6	90.5	89.0	89.8	91.4						
15	93.8	92.4	88.8	86.6	89.6	93.6	95.6	94.0	90.2	87.1	88.9	91.9						
20	94.3	92.4	87.3	83.8	88.3	94.3	97.7	95.0	89.1	84.5	87.5	91.9						
25	94.1	91.7	85.0	80.3	86.3	94.8	99.4	95.9	87.6	81.2	85.4	91.3						
30	93.6	90.4	82.2	76.2	83.9	95.5	101	96.6	85.4	77.3	82.6	90.1						
35	93.2	89.0	78.8	71.5	80.9	95.7	103	96.9	82.7	72.8	79.3	88.7						
40	92.7	87.4	74.8	66.4	77.5	95.6	104	97.0	79.7	67.8	75.4	87.2						
45	92.2	85.8	70.5	60.8	74.0	95.3	105	96.8	76.4	62.3	71.2	85.6						
50	91.4	84.1	66.1	54.8	70.3	94.9	106	96.6	73.0	56.5	66.7	83.9						
55	90.8	82.2	61.4	48.5	66.2	94.4	107	96.2	69.0	50.4	62.2	82.0						
60	90.5	80.6	56.7	42.0	61.8	94.0	109	95.9	64.9	44.0	57.4	80.2						
65	90.3	79.5	52.1	35.4	57.6	94.1	110	95.9	60.9	37.5	52.8	79.0						
70	89.6	78.3	48.0	28.7	54.0	93.9	111	95.9	57.4	30.9	48.4	77.8						
75	88.6	76.7	44.6	21.9	50.9	93.2	111	95.2	54.5	24.2	44.8	76.2						
80	87.7	75.3	41.7	15.2	48.4	92.5	111	94.5	52.0	17.5	41.7	74.6						
85	87.4	74.2	39.3	8.66	46.2	92.1	111	94.0	49.7	10.9	38.9	73.3						
90	87.1	73.9	37.6	3.77	44.6	92.1	111	94.0	47.9	5.08	36.8	72.7						
95	85.8	73.5	36.2	4.22	44.4	91.8	110	93.9	47.4	5.31	35.5	72.3						
100	84.1	71.1	31.3	5.70	45.7	90.9	109	92.9	48.6	6.86	30.5	70.4						
105	82.3	67.4	30.1	8.33	47.4	90.3	108	92.2	50.0	9.43	29.2	67.5						
110	80.7	66.0	30.3	11.3	50.2	90.1	107	91.8	52.3	12.6	29.0	65.6						
115	80.8	64.2	35.2	14.4	53.9	90.4	106	91.7	55.6	15.6	34.5	63.5						
120	80.8	64.0	38.5	17.8	57.3	91.0	105	92.1	58.9	18.6	36.9	66.2						
125	79.3	71.2	37.8	21.2	59.6	91.9	105	92.9	61.4	21.8	36.9	70.2						
130	83.3	71.6	38.0	24.4	61.6	92.4	105	93.5	63.2	24.8	38.5	68.1						
135	84.4	64.6	36.2	27.6	62.8	91.9	103	92.8	64.7	27.7	37.5	61.5						
140	82.1	55.7	32.3	30.5	62.8	89.6	101	90.6	66.2	30.3	36.7	58.0						
145	79.1	49.9	30.2	33.2	63.3	86.4	96.0	87.2	67.8	32.7	36.0	52.2						
150	76.2	45.6	27.9	35.6	65.8	83.8	89.9	84.5	69.2	34.8	35.5	45.0						
155	72.6	40.0	27.8	42.6	68.1	80.6	84.7	81.3	69.9	41.4	36.8	40.4						
160	68.8	31.6	36.4	49.9	69.5	77.8	81.2	79.1	70.3	48.9	42.0	38.1						
165	59.8	29.1	46.9	57.0	70.6	76.7	73.6	77.1	71.0	56.2	48.9	37.9						
170	28.4	36.4	55.8	63.8	71.2	76.0	40.1	75.6	70.8	63.2	58.2	43.8						
175	30.4	51.8	64.2	70.0	72.3	74.9	37.2	72.4	71.1	69.2	66.7	54.6						
180	34.1	65.5	71.6	73.6	73.6	68.9	34.3	65.4	71.6	73.5	73.7	68.7						

C Range: 0 - 360DEG
C Interval: 30.0DEG
Test Speed: HIGH
Temperature:25.3℃
Operators:
Test Date:2025-03-03

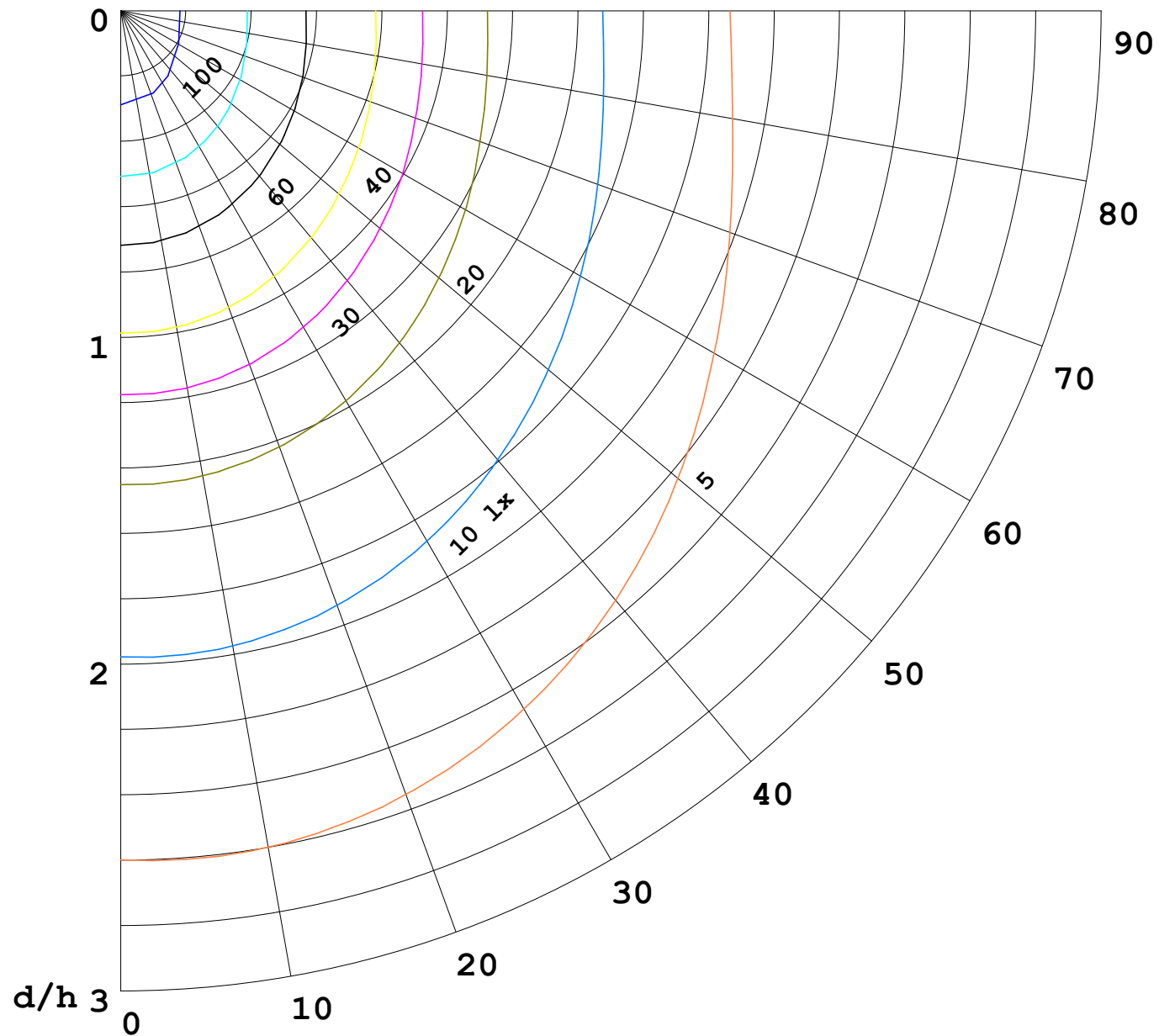
γ Range: 0 - 180DEG
γ Interval: 1.0DEG
Test System:EVERFINE GO-2000B_V1 SYSTEM V2.00.488
Humidity:65.0%
Test Distance:6.360m [K=1.0000]
Remarks:

I (cd)



1000 lm

$\kappa = 1$



F = 1000 lm
 K = 0.7
 Hcc = 0.8 m
 Hfc = 0.0 m
 Eave = 100 lx

	Pcc	Pw	Pfc
—————	70	50	30
—————	50	30	20

