

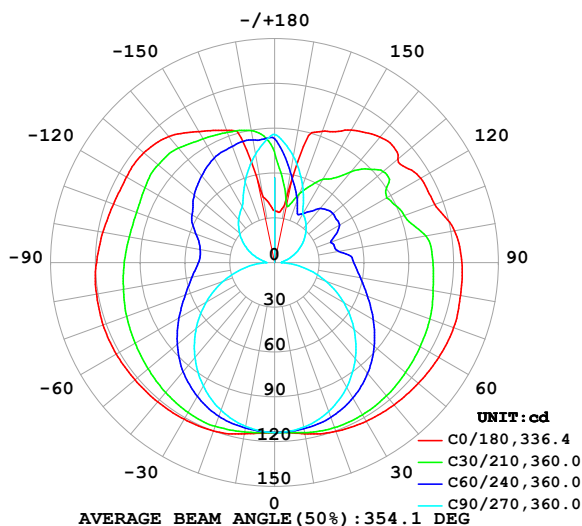
LUMINAIRE PHOTOMETRIC TEST REPORT

Test:U:24.00V I:0.7054A P:16.93W PF:1.000 Freq:0Hz
Lamp Flux:1032.48x1 lm

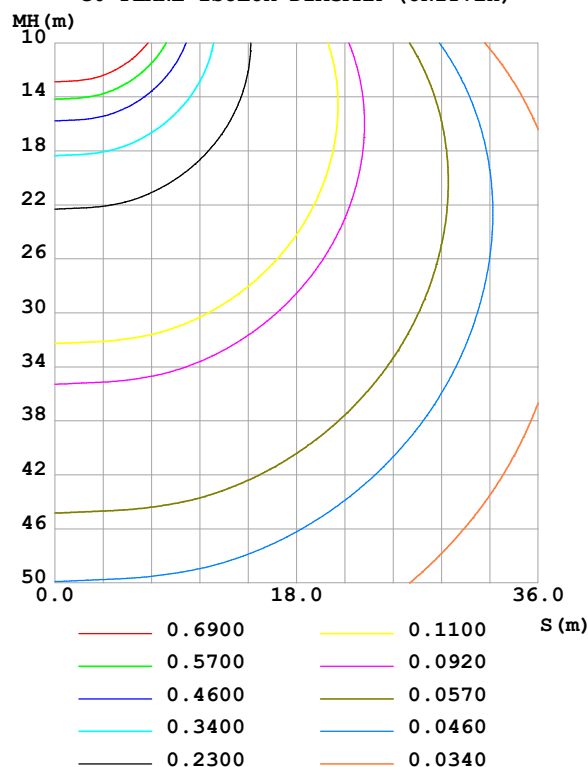
NAME: SF24-24V-2835-288-U2-LY	TYPE:	WEIGHT:
SPEC.:	DIM.: Length=1m	SERIAL No.:
MFR.: OLympia lighting	SUR.:	Shielding Angle:

DATA OF LAMP		PHOTOMETRIC DATA				Eff: 60.99 lm/W
MODEL	2835	I _{max} (cd)	127.7	S/MH(C0/180)	1.63	
NOMINAL POWER(W)	16	LOR(%)	100.0	S/MH(C90/270)	1.25	
RATED VOLTAGE(V)	24	TOTAL FLUX(lm)	1032.5	η UP,DN(C0-180)	21.7,28.3	
NOMINAL FLUX(lm)	1032.48	CIE CLASS	DIFFUSE	η UP,DN(C180-360)	22.0,28.0	
LAMPS INSIDE	1	η up (%)	43.8	CIBSE SHR NOM	1.75	
TEST VOLTAGE(V)		η down (%)	56.2	CIBSE SHR MAX	1.75	

LUMINOUS INTENSITY DISTRIBUTION DIAGRAM



C0 PLANE ISOLUX DIAGRAM (UNIT:lx)



C Range: 0 - 360DEG
C Interval: 30.0DEG
Test Speed: HIGH
Temperature: 25.3 °C
Operators:
Test Date: 2025-03-03

γ Range: 0 - 180DEG
γ Interval: 1.0DEG
Test System: EVERFINE GO-2000B_V1 SYSTEM V2.00.488
Humidity: 65.0%
Test Distance: 6.360m [K=1.0000]
Remarks:

ZONAL FLUX DIAGRAM

ZONAL FLUX DIAGRAM:

γ	C0	C45	C90	C135	C180	C225	C270	C315	γ	Φ zone	Φ total	%lum, lamp
10	116.4	114.3	112.0	114.3	116.4	113.9	111.5	113.5	0- 10	10.88	10.88	1.05,1.05
20	120.3	114.0	106.1	113.1	120.0	113.1	105.3	112.8	10- 20	32.24	43.12	4.18,4.18
30	122.7	111.3	96.64	109.7	121.2	109.8	95.53	110.0	20- 30	51.65	94.76	9.18,9.18
40	124.5	106.8	84.16	104.2	121.9	104.6	83.08	105.5	30- 40	67.38	162.1	15.7,15.7
50	125.8	100.9	69.54	97.58	122.2	97.94	68.59	99.60	40- 50	78.56	240.7	23.3,23.3
60	127.0	94.53	53.49	90.47	122.5	90.98	52.85	93.20	50- 60	84.93	325.6	31.5,31.5
70	127.7	88.54	36.71	83.95	122.3	84.68	36.53	87.20	60- 70	87.08	412.7	40,40
80	126.4	83.18	19.80	78.52	121.2	79.57	20.14	82.05	70- 80	85.78	498.5	48.3,48.3
90	125.4	79.62	4.654	74.48	119.3	75.93	5.799	78.45	80- 90	81.99	580.5	56.2,56.2
100	122.4	73.36	6.573	73.47	117.0	74.87	8.466	72.85	90-100	78.29	658.8	63.8,63.8
110	114.2	66.23	12.61	76.36	114.9	77.32	15.42	66.72	100-110	73.54	732.3	70.9,70.9
120	113.1	68.50	19.48	80.85	114.6	82.12	23.05	70.45	110-120	70.53	802.8	77.8,77.8
130	107.7	73.04	26.52	84.70	114.5	86.20	30.65	71.15	120-130	66.98	869.8	84.2,84.2
140	109.8	63.28	32.89	85.97	110.3	88.11	37.57	61.42	130-140	58.29	928.1	89.9,89.9
150	102.5	51.34	38.09	87.41	101.4	88.40	43.66	51.84	140-150	45.31	973.4	94.3,94.3
160	93.62	47.00	55.02	88.20	94.26	87.85	57.80	50.26	150-160	32.36	1006	97.4,97.4
170	39.28	52.78	72.49	88.69	44.66	86.63	73.89	62.45	160-170	19.99	1026	99.4,99.4
180	34.87	78.31	85.55	86.01	34.98	78.52	86.03	85.93	170-180	6.706	1032	100,100
DEG	LUMINOUS INTENSITY:cd									UNIT:lm		

Conical surface Flux(90deg): 200.34 lm

%lum = 19.4%

%lamp = 19.4%

Conical surface Flux(130deg): 369.14 lm

%lum = 35.8%

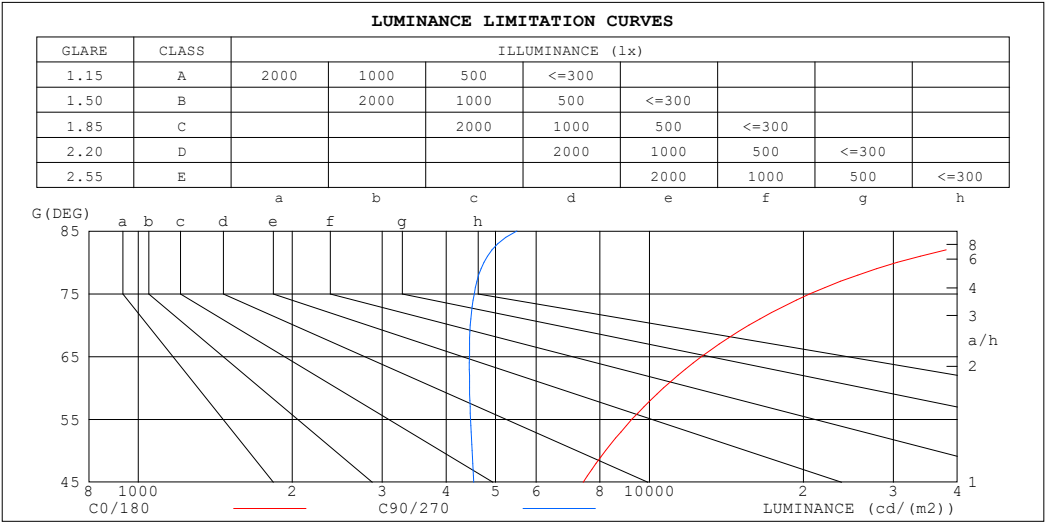
%lamp = 35.8%

C Range: 0 - 360DEG
 C Interval: 30.0DEG
 Test Speed: HIGH
 Temperature:25.3℃
 Operators:
 Test Date:2025-03-03

γ Range: 0 - 180DEG
 γ Interval: 1.0DEG
 Test System:EVERFINE GO-2000B_V1 SYSTEM V2.00.488
 Humidity:65.0%
 Test Distance:6.360m [K=1.0000]
 Remarks:

LUMINANCE LIMITATION CURVES

Test:U:24.00V I:0.7054A P:16.93W PF:1.000 Freq:0Hz Lamp Flux:1032.48x1 lm		
NAME: SF24-24V-2835-288-U2-LY	TYPE:	WEIGHT:
SPEC.:	DIM.: Length=1m	SERIAL No.:
MFR.: OLympia lighting	SUR.:	Shielding Angle:



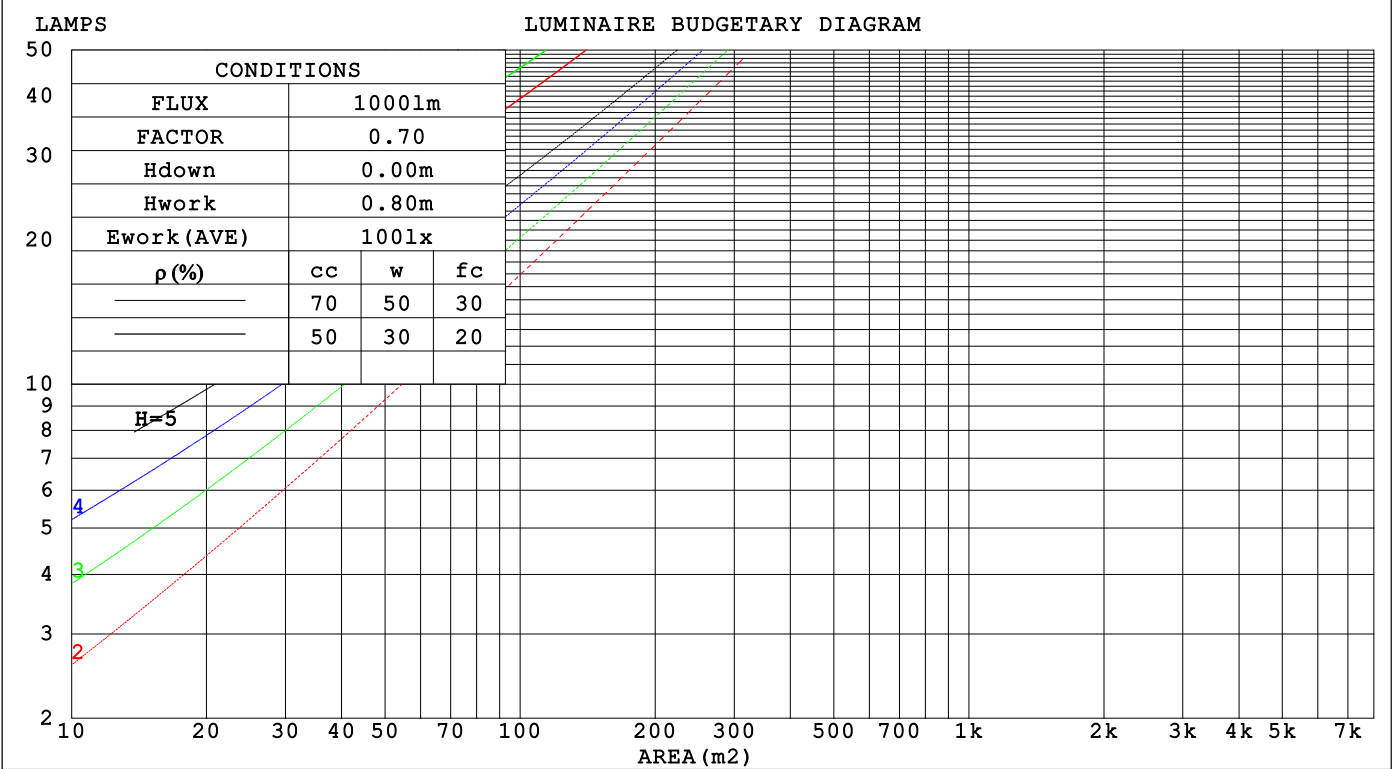
LUMINANCE cd/(m2)		
G (DEG)	C0/180	C90/270
85	60691	5502
80	30526	4741
75	20613	4541
70	15652	4462
65	12645	4443
60	10650	4448
55	9242	4467
50	8205	4497
45	7419	4531

C Range: 0 - 360DEG	γ Range: 0 - 180DEG
C Interval: 30.0DEG	γ Interval: 1.0DEG
Test Speed: HIGH	Test System:EVERFINE GO-2000B_V1 SYSTEM V2.00.488
Temperature:25.3℃	Humidity:65.0%
Operators:	Test Distance:6.360m [K=1.0000]
Test Date:2025-03-03	Remarks:

CU AND LUMINAIRE BUDGETARY ESTIMATE DIAGRAM

Test:U:24.00V I:0.7054A P:16.93W PF:1.000 Freq:0Hz		
Lamp Flux:1032.48x1 lm		
NAME: SF24-24V-2835-288-U2-LY	TYPE:	WEIGHT:
SPEC.:	DIM.: Length=1m	SERIAL No.:
MFR.: OLYmpia lighting	SUR.:	Shielding Angle:

pcc	80%			70%			50%			30%			10%			0
pw	50%	30%	10%	50%	30%	10%	50%	30%	10%	50%	30%	10%	50%	30%	10%	0
pfc	20%			20%			20%			20%			20%			0
RCR	RCR:Room Cavity Ratio			Coefficients of Utilization(CU)												
0.0	1.09	1.09	1.09	1.01	1.01	1.01	.87	.87	.87	.74	.74	.74	.62	.62	.62	.56
1.0	.89	.84	.79	.83	.78	.74	.70	.67	.63	.59	.56	.54	.49	.47	.45	.40
2.0	.76	.68	.62	.70	.64	.58	.60	.54	.50	.50	.46	.42	.41	.38	.35	.30
3.0	.66	.57	.50	.61	.53	.47	.52	.45	.40	.43	.38	.34	.35	.31	.28	.24
4.0	.58	.48	.41	.53	.45	.39	.45	.39	.33	.38	.33	.28	.31	.27	.23	.20
5.0	.51	.42	.35	.47	.39	.33	.40	.33	.28	.33	.28	.24	.27	.23	.20	.17
6.0	.45	.36	.30	.42	.34	.28	.36	.29	.24	.30	.25	.21	.25	.20	.17	.14
7.0	.41	.32	.26	.38	.30	.24	.32	.26	.21	.27	.22	.18	.22	.18	.15	.12
8.0	.37	.28	.23	.34	.27	.21	.29	.23	.19	.25	.20	.16	.20	.16	.13	.11
9.0	.34	.25	.20	.31	.24	.19	.27	.21	.16	.23	.18	.14	.19	.15	.12	.10
10.0	.31	.23	.18	.29	.22	.17	.25	.19	.15	.21	.16	.13	.17	.13	.11	.09



C Range: 0 - 360DEG
C Interval: 30.0DEG
Test Speed: HIGH
Temperature:25.3℃
Operators:
Test Date:2025-03-03

γ Range: 0 - 180DEG
γ Interval: 1.0DEG
Test System:EVERFINE GO-2000B_V1 SYSTEM V2.00.488
Humidity:65.0%
Test Distance:6.360m [K=1.0000]
Remarks:

WEC AND CCEC

Test:U:24.00V I:0.7054A P:16.93W PF:1.000 Freq:0Hz Lamp Flux:1032.48x1 lm		
NAME: SF24-24V-2835-288-U2-LY	TYPE:	WEIGHT:
SPEC.:	DIM.: Length=1m	SERIAL No.:
MFR.: OLympia lighting	SUR.:	Shielding Angle:

pcc	80%			70%			50%			30%			10%			0														
pw	50%	30%	10%	50%	30%	10%	50%	30%	10%	50%	30%	10%	50%	30%	10%	0														
pfc	20%			20%			20%			20%			20%			0														
RCR	RCR:Room Cavity Ratio															Wall Exitance Coefficients(WEC)														
0.0																														
1.0	.386	.219	.069	.365	.208	.066	.327	.187	.060	.291	.168	.054	.259	.150	.048															
2.0	.328	.180	.055	.309	.170	.052	.274	.152	.047	.242	.136	.042	.212	.120	.038															
3.0	.289	.154	.046	.272	.146	.044	.240	.130	.040	.210	.115	.035	.183	.101	.031															
4.0	.259	.135	.040	.243	.127	.038	.214	.114	.034	.187	.100	.030	.162	.088	.027															
5.0	.235	.120	.035	.221	.113	.033	.194	.101	.030	.169	.089	.026	.145	.078	.023															
6.0	.215	.108	.031	.202	.102	.029	.177	.091	.026	.154	.080	.023	.132	.069	.021															
7.0	.198	.098	.028	.186	.093	.026	.163	.082	.024	.141	.072	.021	.121	.063	.019															
8.0	.183	.090	.025	.172	.085	.024	.151	.075	.022	.131	.066	.019	.112	.058	.017															
9.0	.171	.083	.023	.160	.078	.022	.141	.070	.020	.122	.061	.017	.104	.053	.015															
10.0	.160	.077	.021	.150	.072	.020	.132	.064	.018	.114	.057	.016	.098	.049	.014															

pcc	80%			70%			50%			30%			10%			0
pw	50%	30%	10%	50%	30%	10%	50%	30%	10%	50%	30%	10%	50%	30%	10%	0
pfc	20%			20%			20%			20%			20%			0
RCR	RCR:Room Cavity Ratio						Ceiling Cavity Exitance Coefficients (CCEC)									
0.0	.524	.524	.524	.448	.448	.448	.306	.306	.306	.176	.176	.176	.056	.056	.056	
1.0	.522	.492	.465	.447	.422	.400	.305	.290	.277	.176	.168	.161	.056	.054	.052	
2.0	.516	.470	.432	.442	.405	.374	.303	.280	.261	.175	.163	.153	.056	.053	.050	
3.0	.509	.455	.412	.436	.392	.357	.299	.273	.251	.173	.159	.148	.056	.052	.048	
4.0	.501	.443	.399	.430	.383	.346	.296	.267	.244	.171	.156	.144	.055	.051	.047	
5.0	.494	.434	.390	.424	.375	.339	.292	.262	.239	.169	.154	.142	.055	.050	.047	
6.0	.487	.426	.383	.418	.369	.334	.289	.258	.236	.167	.152	.140	.054	.050	.046	
7.0	.480	.420	.378	.413	.364	.330	.285	.255	.234	.166	.150	.139	.054	.049	.046	
8.0	.474	.415	.375	.408	.360	.327	.282	.253	.232	.164	.149	.138	.053	.049	.046	
9.0	.468	.410	.372	.403	.356	.324	.279	.250	.230	.163	.148	.137	.053	.049	.046	
10.0	.462	.407	.370	.398	.353	.322	.276	.248	.229	.161	.147	.137	.052	.048	.045	

C Range: 0 - 360DEG
C Interval: 30.0DEG
Test Speed: HIGH
Temperature:25.3℃
Operators:
Test Date:2025-03-03

γ Range: 0 - 180DEG
γ Interval: 1.0DEG
Test System:EVERFINE GO-2000B_V1 SYSTEM V2.00.488
Humidity:65.0%
Test Distance:6.360m [K=1.0000]
Remarks:

UGR(Unified Glare Rating) Table

Test:U:24.00V I:0.7054A P:16.93W PF:1.000 Freq:0Hz Lamp Flux:1032.48x1 lm										
NAME: SF24-24V-2835-288-U2-LY					TYPE:			WEIGHT:		
SPEC.:					DIM.: Length=1m			SERIAL No.:		
MFR.: OLympia lighting					SUR.:			Shielding Angle:		
ceiling/cavity	0.7	0.7	0.5	0.5	0.3	0.7	0.7	0.5	0.5	0.3
walls	0.5	0.3	0.5	0.3	0.3	0.5	0.3	0.5	0.3	0.3
working plane	0.2	0.2	0.2	0.2	0.2	0.2	0.2	0.2	0.2	0.2
Room dimensions	Viewed crosswise					Viewed endwise				
x = 2H y = 2H	19.3	20.4	20.1	21.3	22.3	15.8	16.9	16.6	17.8	18.8
3H	22.6	23.6	23.5	24.5	25.6	17.6	18.6	18.4	19.5	20.5
4H	24.5	25.4	25.3	26.3	27.4	18.4	19.4	19.3	20.3	21.3
6H	26.6	27.5	27.4	28.3	29.4	19.2	20.1	20.0	20.9	22.1
8H	27.7	28.6	28.6	29.5	30.6	19.5	20.3	20.3	21.2	22.3
12H	29.1	29.9	29.9	30.8	31.9	19.7	20.6	20.6	21.5	22.6
4H 2H	19.8	20.8	20.7	21.7	22.8	17.5	18.4	18.3	19.3	20.4
3H	23.4	24.2	24.3	25.1	26.3	19.5	20.3	20.3	21.2	22.3
4H	25.5	26.2	26.4	27.1	28.3	20.5	21.2	21.4	22.2	23.3
6H	27.7	28.4	28.7	29.3	30.5	21.4	22.1	22.4	23.0	24.2
8H	29.0	29.6	29.9	30.6	31.8	21.9	22.5	22.8	23.4	24.6
12H	30.5	31.1	31.4	32.0	33.2	22.2	22.8	23.1	23.7	25.0
8H 4H	25.8	26.4	26.7	27.3	28.5	22.1	22.7	23.0	23.7	24.9
6H	28.4	28.9	29.3	29.9	31.1	23.4	24.0	24.4	24.9	26.2
8H	29.9	30.4	30.9	31.3	32.6	24.1	24.6	25.1	25.5	26.8
12H	31.6	32.1	32.6	33.0	34.3	24.7	25.1	25.7	26.1	27.4
12H 4H	25.8	26.4	26.7	27.3	28.5	22.7	23.3	23.6	24.2	25.4
6H	28.5	29.0	29.5	30.0	31.2	24.3	24.8	25.3	25.8	27.0
8H	30.1	30.6	31.1	31.5	32.8	25.2	25.6	26.1	26.6	27.8
Variations with the observer position at spacings(CIE Pub.117):										
S = 1.0H	+ 0.1 / - 0.1					+ 0.1 / - 0.1				
1.5H	+ 0.2 / - 0.3					+ 0.2 / - 0.2				
2.0H	+ 0.3 / - 0.4					+ 0.3 / - 0.4				

CIE Pub.117, 1032 lm Total Lamp Luminous Flux Correct ($8\log(F/F_0) = 0.1$)
Area: 0.024 m²

C Range: 0 - 360DEG
C Interval: 30.0DEG
Test Speed: HIGH
Temperature:25.3℃
Operators:
Test Date:2025-03-03

γ Range: 0 - 180DEG
γ Interval: 1.0DEG
Test System:EVERFINE GO-2000B_V1 SYSTEM V2.00.488
Humidity:65.0%
Test Distance:6.360m [K=1.0000]
Remarks:

UTILIZATION FACTORS TABLE

Test:U:24.00V I:0.7054A P:16.93W PF:1.000 Freq:0Hz Lamp Flux:1032.48x1 lm		
NAME: SF24-24V-2835-288-U2-LY	TYPE:	WEIGHT:
SPEC.:	DIM.: Length=1m	SERIAL No.:
MFR.: OLympia lighting	SUR.:	Shielding Angle:

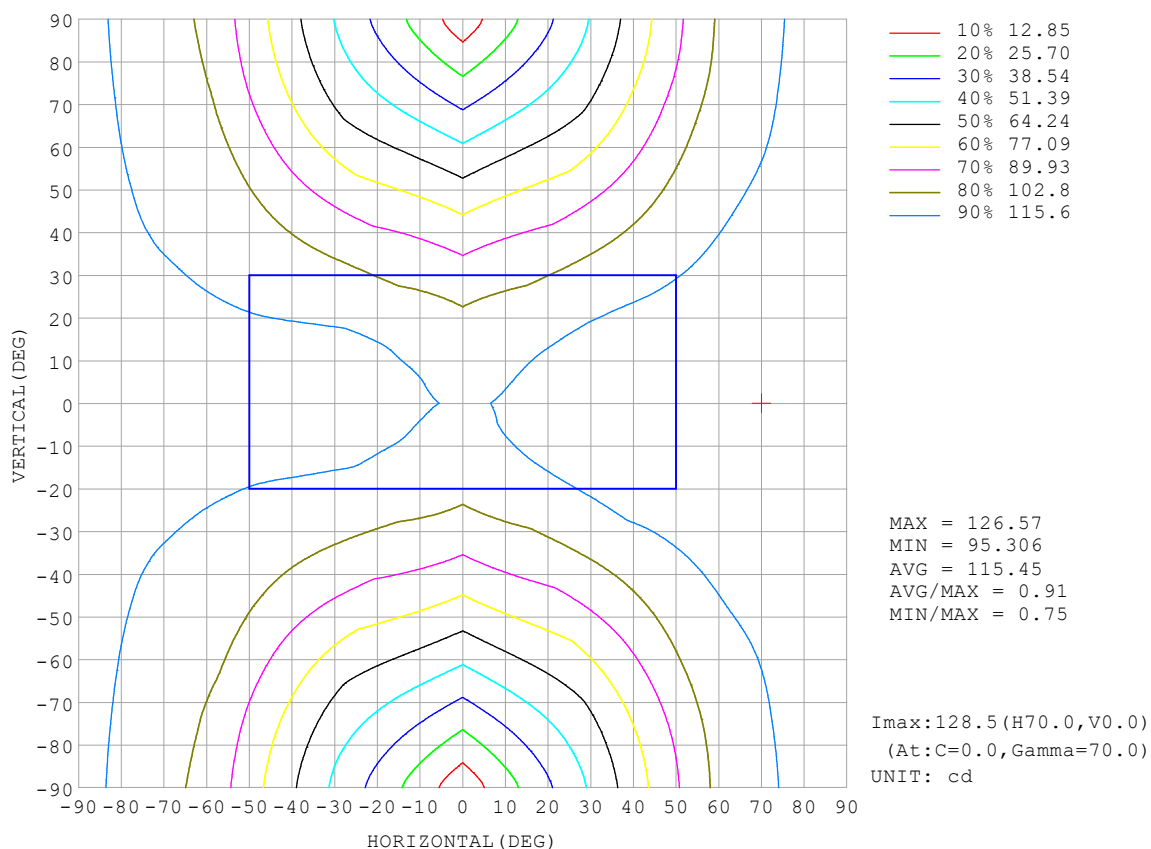
REFLECTANCE										
Ceiling	0.8	0.8	0.8	0.7	0.7	0.7	0.5	0.5	0.5	0
Walls	0.7	0.5	0.3	0.7	0.5	0.3	0.7	0.5	0.3	0
Working plane	0.2	0.2	0.2	0.2	0.2	0.2	0.2	0.2	0.2	0
ROOM INDEX	UTILIZATION FACTORS (PERCENT) $k(RI) \times RCR = 5$									
$k = 0.60$	40	27	20	38	26	20	34	24	19	11
0.80	48	35	27	46	34	26	41	31	24	15
1.00	56	42	34	53	40	32	47	38	30	19
1.25	63	49	40	59	47	39	52	42	35	22
1.50	68	55	46	63	52	44	55	46	39	25
2.00	75	63	54	70	60	52	61	53	46	29
2.50	80	69	60	75	65	57	65	57	51	32
3.00	84	74	66	78	69	62	68	61	55	35
4.00	89	80	73	83	75	69	71	65	60	38
5.00	92	85	78	86	79	73	74	69	64	41
ROOM INDEX	UF (total)									Direct
According to DIN EN 13032-2 2004			Suspended					SHRNOM = 1.25		

C Range: 0 - 360DEG
 C Interval: 30.0DEG
 Test Speed: HIGH
 Temperature: 25.3°C
 Operators:
 Test Date: 2025-03-03

γ Range: 0 - 180DEG
 γ Interval: 1.0DEG
 Test System: EVERFINE GO-2000B_V1 SYSTEM V2.00.488
 Humidity: 65.0%
 Test Distance: 6.360m [K=1.0000]
 Remarks:

ISOCANDELA DIAGRAM

Test:U:24.00V I:0.7054A P:16.93W PF:1.000 Freq:0Hz Lamp Flux:1032.48x1 lm		
NAME: SF24-24V-2835-288-U2-LY	TYPE:	WEIGHT:
SPEC.:	DIM.: Length=1m	SERIAL No.:
MFR.: OLympia lighting	SUR.:	Shielding Angle:

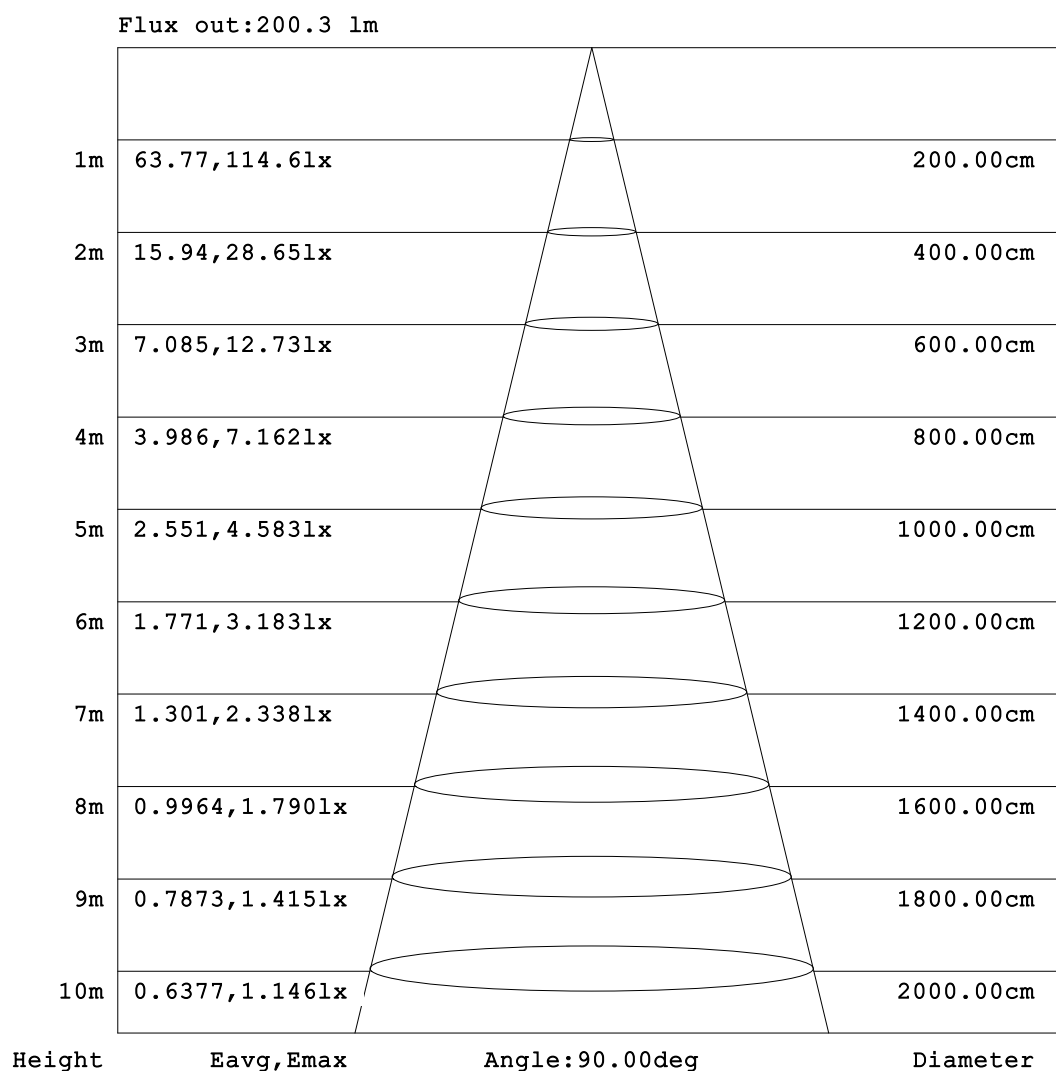


C Range: 0 - 360DEG
C Interval: 30.0DEG
Test Speed: HIGH
Temperature:25.3℃
Operators:
Test Date:2025-03-03

γ Range: 0 - 180DEG
γ Interval: 1.0DEG
Test System:EVERFINE GO-2000B_V1 SYSTEM V2.00.488
Humidity:65.0%
Test Distance:6.360m [K=1.0000]
Remarks:

AAI Figure

Test:U:24.00V I:0.7054A P:16.93W PF:1.000 Freq:0Hz Lamp Flux:1032.48lx 1m		
NAME: SF24-24V-2835-288-U2-LY	TYPE:	WEIGHT:
SPEC.:	DIM.: Length=1m	SERIAL No.:
MFR.: OLympia lighting	SUR.:	Shielding Angle:



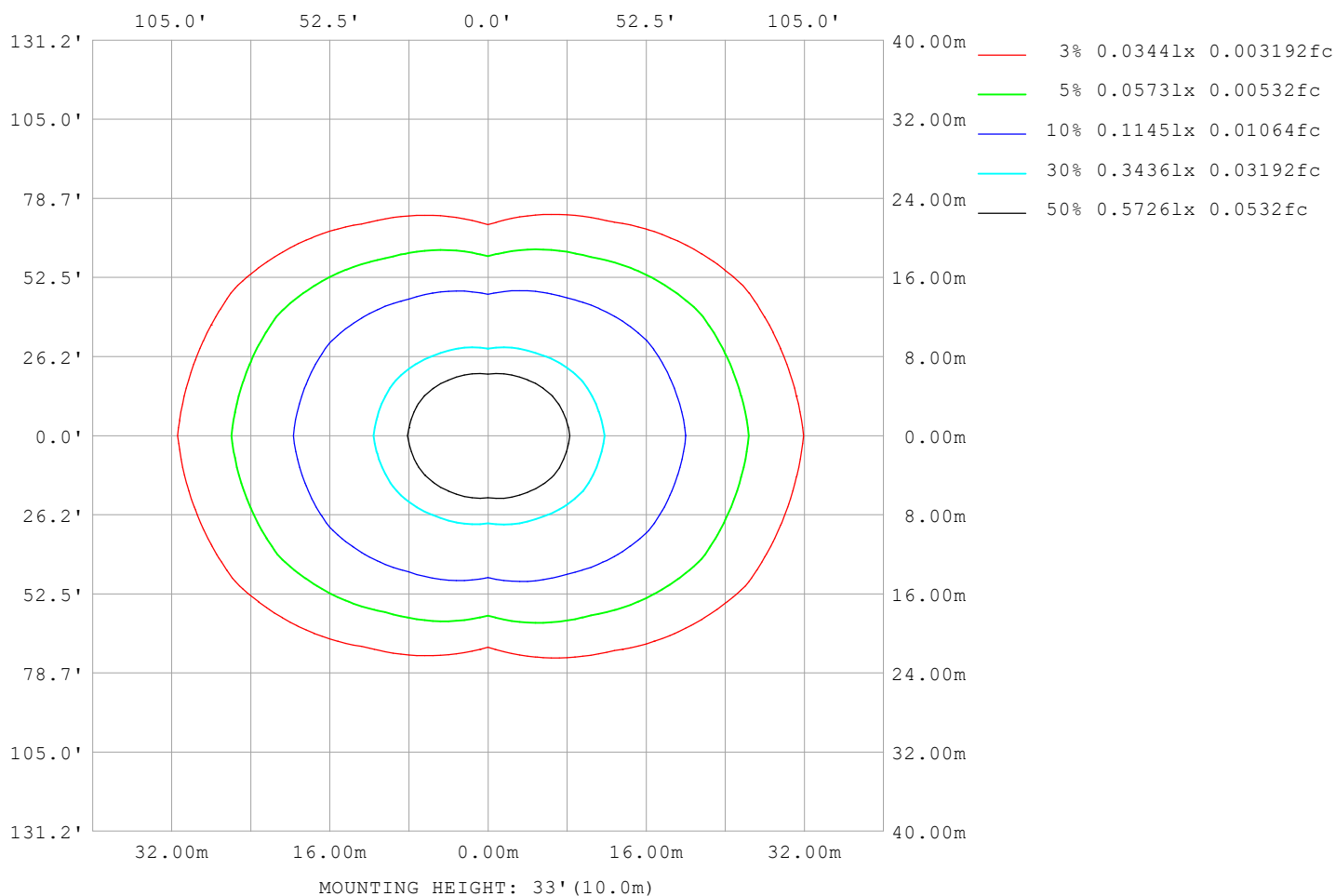
Note: The Curves indicate the illuminated area and the average illumination when the luminaire is at different distance.

C Range: 0 - 360DEG
C Interval: 30.0DEG
Test Speed: HIGH
Temperature: 25.3°C
Operators:
Test Date: 2025-03-03

γ Range: 0 - 180DEG
γ Interval: 1.0DEG
Test System: EVERFINE GO-2000B_V1 SYSTEM V2.00.488
Humidity: 65.0%
Test Distance: 6.360m [K=1.0000]
Remarks:

ISOLUX DIAGRAM

Test:U:24.00V I:0.7054A P:16.93W PF:1.000 Freq:0Hz Lamp Flux:1032.48x1 lm		
NAME: SF24-24V-2835-288-U2-LY	TYPE:	WEIGHT:
SPEC.:	DIM.: Length=1m	SERIAL No.:
MFR.: OLympia lighting	SUR.:	Shielding Angle:



C Range: 0 - 360DEG
C Interval: 30.0DEG
Test Speed: HIGH
Temperature: 25.3°C
Operators:
Test Date: 2025-03-03

γ Range: 0 - 180DEG
γ Interval: 1.0DEG
Test System: EVERFINE GO-2000B_V1 SYSTEM V2.00.488
Humidity: 65.0%
Test Distance: 6.360m [K=1.0000]
Remarks:

LED Avg.L Report

Test:U:24.00V I:0.7054A P:16.93W PF:1.000 Freq:0Hz Lamp Flux:1032.48x1 lm		
NAME: SF24-24V-2835-288-U2-LY	TYPE:	WEIGHT:
SPEC.:	DIM.: Length=1m	SERIAL No.:
MFR.: OLympia lighting	SUR.:	Shielding Angle:

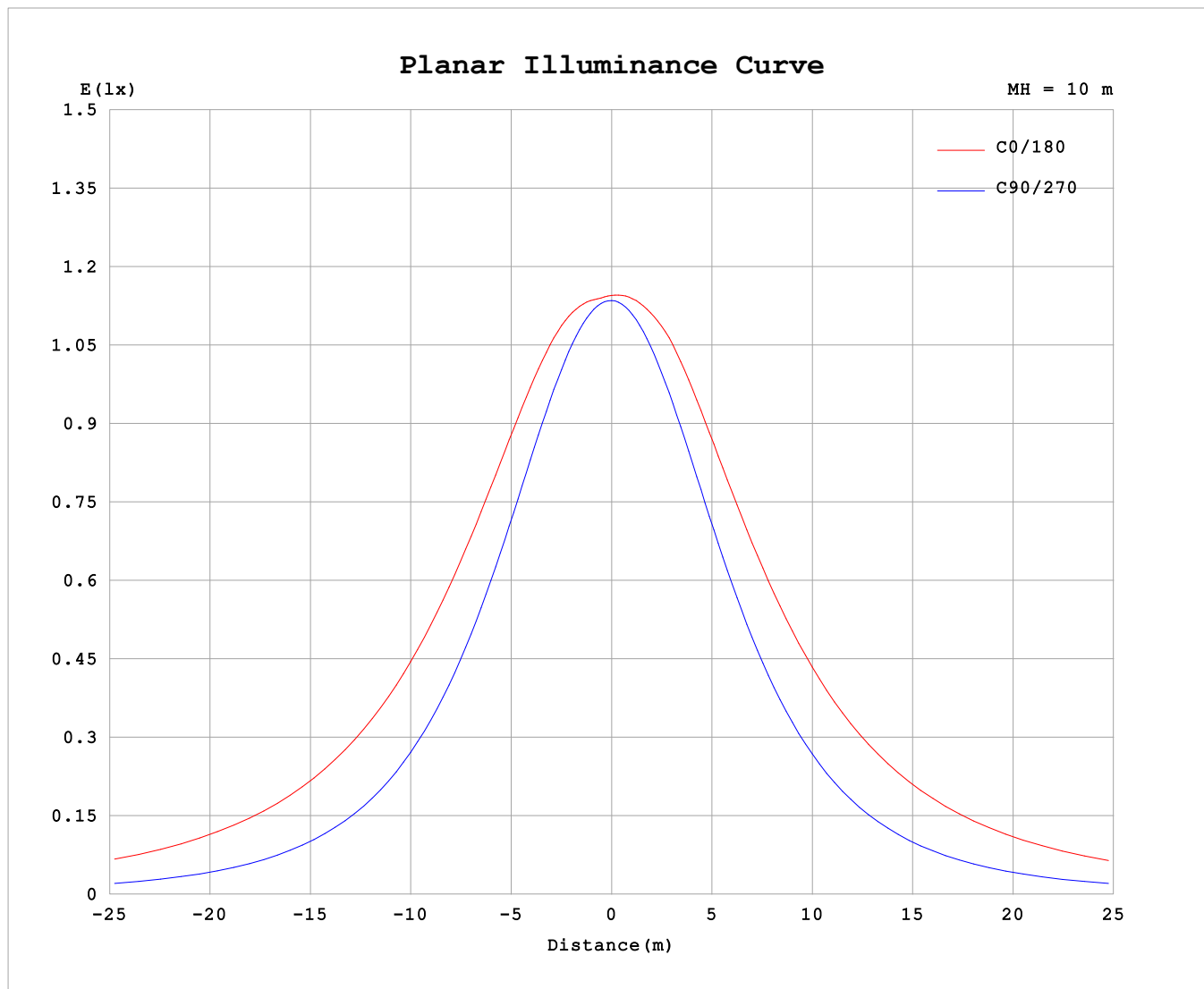
AvgL	cd/m2
L_0~180 (65) av	12323
L_0~180 (75) av	20038
L_0~180 (85) av	58977
L_90~270 (65) av	4432
L_90~270 (75) av	4556
L_90~270 (85) av	5664
L_45 (65) av	8829
L_45 (75) av	13553
L_45 (85) av	38283

Standard: GB/T 29293-2012

C Range: 0 - 360DEG
C Interval: 30.0DEG
Test Speed: HIGH
Temperature:25.3℃
Operators:
Test Date:2025-03-03

γ Range: 0 - 180DEG
γ Interval: 1.0DEG
Test System:EVERFINE GO-2000B_V1 SYSTEM V2.00.488
Humidity:65.0%
Test Distance:6.360m [K=1.0000]
Remarks:

Planar Illuminance Curve



C Range: 0 - 360DEG
C Interval: 30.0DEG
Test Speed: HIGH
Temperature: 25.3 °C
Operators:
Test Date: 2025-03-03

γ Range: 0 - 180DEG
 γ Interval: 1.0DEG
Test System: EVERFINE GO-2000B_V1 SYSTEM V2.00.488
Humidity: 65.0%
Test Distance: 6.360m [K=1.0000]
Remarks:

LUMINOUS DISTRIBUTION INTENSITY DATA

Test:U:24.00V I:0.7054A P:16.93W PF:1.000 Freq:0Hz Lamp Flux:1032.48x1 lm		
NAME: SF24-24V-2835-288-U2-LY	TYPE:	WEIGHT:
SPEC.:	DIM.: Length=1m	SERIAL No.:
MFR.: OLYMPIA lighting	SUR.:	Shielding Angle:

Table--1

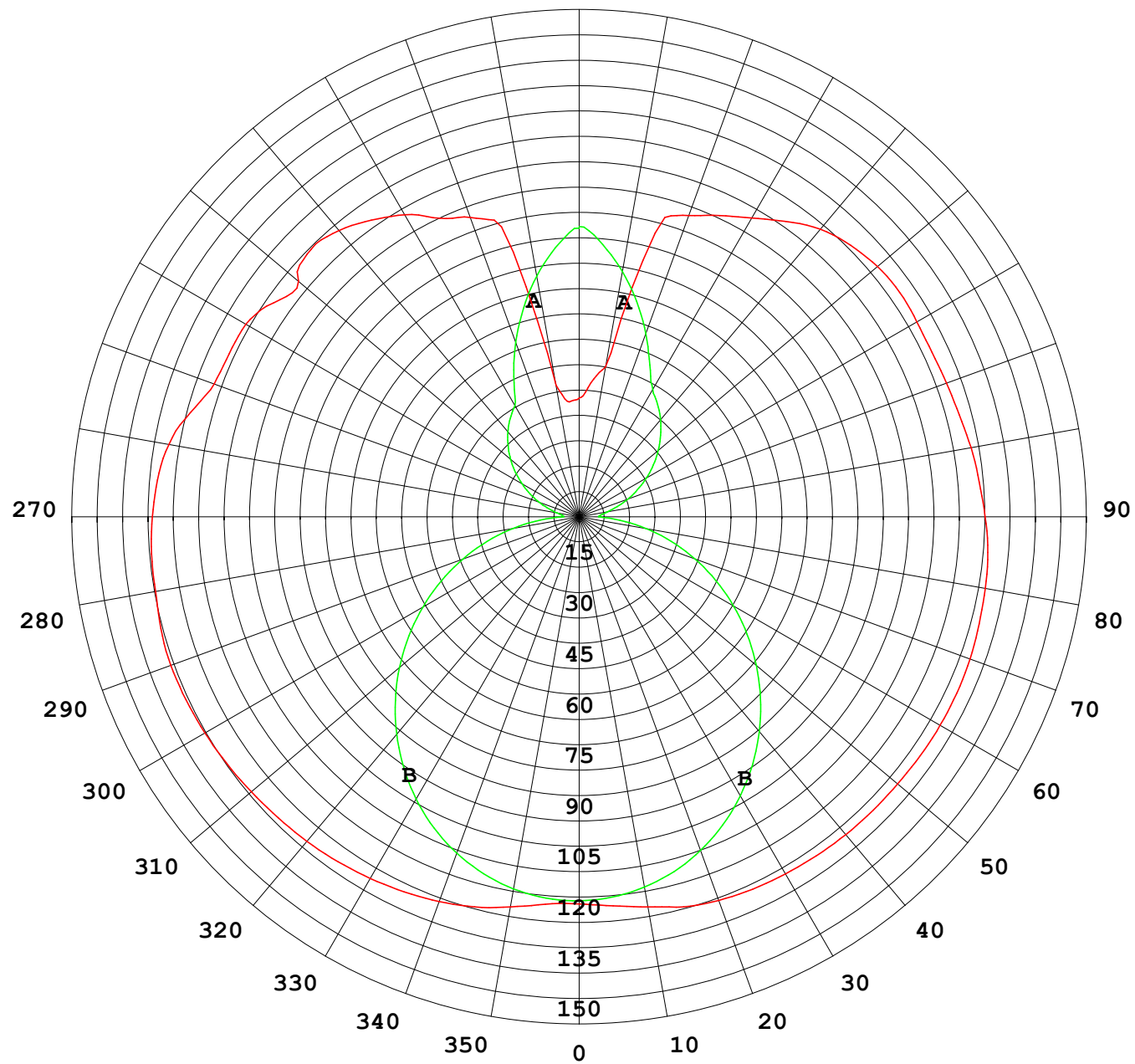
UNIT: cd

C (DEG) γ (DEG)	0	30	60	90	120	150	180	210	240	270	300	330							
0	114	114	114	114	114	114	114	114	114	114	114	114							
5	114	114	114	113	114	114	115	114	113	113	113	114							
10	116	116	113	112	113	115	116	115	113	111	112	115							
15	119	117	112	110	112	116	119	116	111	109	111	116							
20	120	118	110	106	110	116	120	117	110	105	109	116							
25	122	118	108	102	107	116	121	117	107	101	107	116							
30	123	118	105	96.6	104	115	121	116	104	95.5	104	116							
35	124	117	101	90.7	99.9	114	122	115	99.6	89.6	100	116							
40	124	117	97.0	84.2	95.3	113	122	114	95.5	83.1	95.9	115							
45	125	116	92.3	77.1	90.5	111	122	112	90.6	76.0	91.2	114							
50	126	115	87.2	69.5	85.2	110	122	111	85.2	68.6	86.1	113							
55	126	114	81.8	61.6	79.5	108	122	109	79.6	60.8	80.8	112							
60	127	113	76.4	53.5	73.7	107	123	108	74.0	52.9	75.4	111							
65	127	112	71.1	45.2	68.1	106	123	107	68.6	44.7	70.1	110							
70	128	111	66.3	36.7	63.1	105	122	106	63.8	36.5	65.2	109							
75	127	109	62.0	28.3	58.8	103	122	104	59.7	28.3	61.1	108							
80	126	108	58.4	19.8	55.0	102	121	103	56.2	20.1	57.5	107							
85	126	107	55.4	11.5	51.7	101	121	102	53.3	12.2	54.4	105							
90	125	106	53.0	4.65	49.3	99.7	119	101	51.1	5.80	52.2	105							
95	124	105	51.3	5.08	48.4	98.5	118	99.8	50.2	6.46	50.8	104							
100	122	103	43.7	6.57	49.0	97.9	117	99.0	50.7	8.47	43.8	102							
105	118	96.6	41.5	9.36	50.9	97.6	116	98.4	52.4	11.7	42.1	97.2							
110	114	92.5	40.0	12.6	55.1	97.6	115	98.5	56.1	15.4	40.5	92.9							
115	113	89.9	45.8	16.0	58.9	98.4	114	99.1	60.6	19.2	46.9	89.7							
120	113	86.6	50.3	19.5	61.9	99.8	115	100	63.9	23.0	49.3	91.6							
125	110	93.5	50.6	23.1	65.3	101	115	102	66.9	26.9	48.7	95.2							
130	108	94.9	51.1	26.5	68.0	101	114	102	70.4	30.7	50.6	91.7							
135	111	88.7	50.0	29.8	70.9	100	113	102	73.3	34.2	48.1	81.7							
140	110	79.3	47.3	32.9	73.7	98.2	110	100	76.0	37.6	46.6	76.2							
145	106	69.1	41.9	35.7	76.8	96.1	106	97.6	78.7	40.6	45.8	68.0							
150	102	64.6	38.1	38.1	80.0	94.8	101	95.8	80.9	43.7	45.1	58.5							
155	96.8	56.8	36.4	46.0	82.1	93.5	97.7	94.2	82.2	49.7	46.4	51.8							
160	93.6	49.5	44.5	55.0	83.4	93.0	94.3	92.9	82.8	57.8	52.3	48.2							
165	88.3	40.5	52.5	63.9	85.0	92.4	86.4	91.6	84.1	66.1	61.3	47.5							
170	39.3	43.9	61.6	72.5	85.3	92.1	44.7	89.8	83.5	73.9	71.4	53.5							
175	33.9	58.2	72.9	80.2	86.9	90.6	39.4	85.2	83.2	81.0	80.7	68.7							
180	34.9	73.5	83.1	85.6	88.8	83.3	35.0	73.9	83.1	86.0	88.8	83.0							

C Range: 0 - 360DEG
C Interval: 30.0DEG
Test Speed: HIGH
Temperature:25.3℃
Operators:
Test Date:2025-03-03

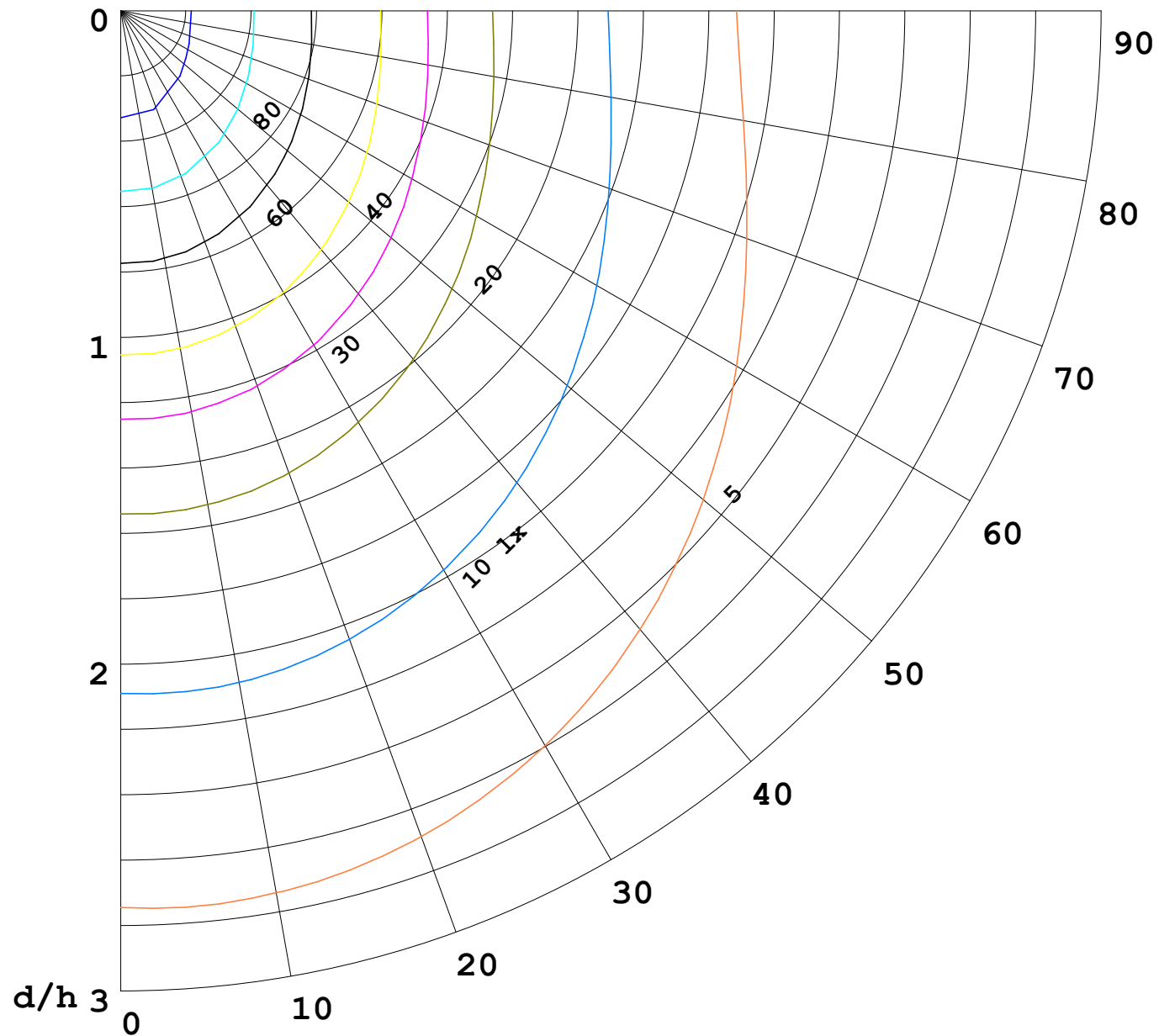
γ Range: 0 - 180DEG
γ Interval: 1.0DEG
Test System:EVERFINE GO-2000B_V1 SYSTEM V2.00.488
Humidity:65.0%
Test Distance:6.360m [K=1.0000]
Remarks:

I (cd)



1000 lm

$\kappa = 1$



F = 1000 lm
 K = 0.7
 Hcc = 0.8 m
 Hfc = 0.0 m
 Eave = 100 lx

	Pcc	Pw	Pfc
—————	70	50	30
—————	50	30	20

