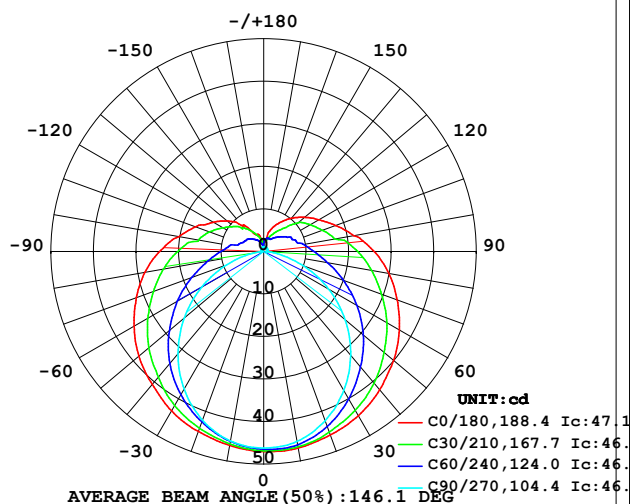


LUMINAIRE PHOTOMETRIC TEST REPORT

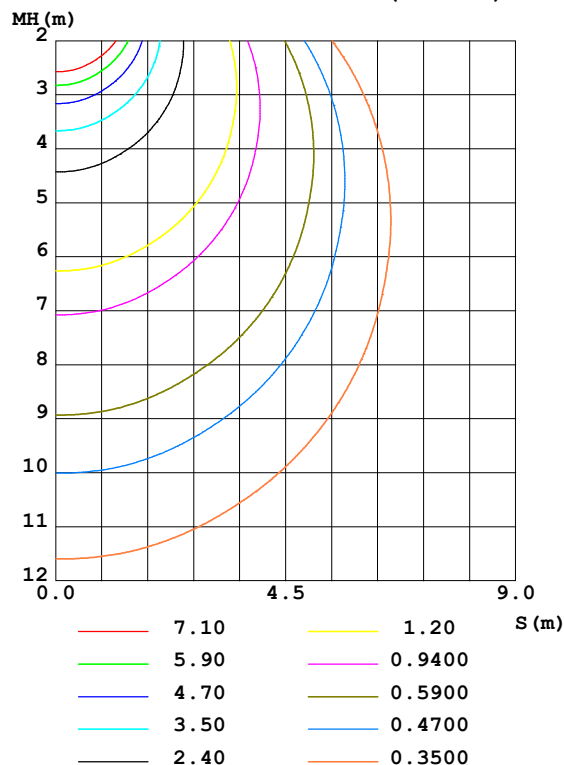
Test:U:24.00V I:0.3255A P:7.812W PF:1.000 Freq:50.00Hz Lamp Flux:232.617x1 lm		
NAME: SF21-24V-2835-120-2700+5700-90-2700	TYPE: 硅胶	WEIGHT:
SPEC.:	DIM.: 28mm*11.5mm	SERIAL No.:2021120901
MFR.: OLYMPIA	SUR.:1*0.016	Shielding Angle:

DATA OF LAMP		PHOTOMETRIC DATA Eff: 29.78 lm/W			
MODEL	2835	I _{max} (cd)	47.11	S/MH (C0/180)	1.38
NOMINAL POWER (W)	7.5	LOR (%)	100.0	S/MH (C90/270)	1.21
RATED VOLTAGE (V)	24	TOTAL FLUX (lm)	232.62	η UP, DN (C0-180)	11.2, 38.4
NOMINAL FLUX (lm)	232.617	CIE CLASS	SEMI-D.	η UP, DN (C180-360)	11.5, 38.8
LAMPS INSIDE	1	η up (%)	22.7	CIBSE SHR NOM	1.50
TEST VOLTAGE (V)	24	η down (%)	77.3	CIBSE SHR MAX	1.55

LUMINOUS INTENSITY DISTRIBUTION DIAGRAM



C0 PLANE ISOLUX DIAGRAM (UNIT: lx)



C Range: 0 - 360DEG
C Interval: 30.0DEG
Test Speed: HIGH
Temperature: 25.3DEG
Operators: LPC
Test Date: 2021-12-09

γ Range: 0 - 180DEG
γ Interval: 1.0DEG
Test System: EVERFINE GO-2000B_V1 SYSTEM V2.0.362
Humidity: 65.0%
Test Distance: 9.200m [K=1.0000]
Remarks:

ZONAL FLUX DIAGRAM

ZONAL FLUX DIAGRAM:

γ	C0	C45	C90	C135	C180	C225	C270	C315	γ	Φ zone	Φ total	%lum, lamp
10	46.91	46.40	45.34	44.86	46.30	45.64	45.22	45.99	0- 10	4.403	4.403	1.89,1.89
20	45.89	44.46	42.36	42.56	45.04	43.42	42.19	44.40	10- 20	12.69	17.09	7.35,7.35
30	44.56	41.55	37.74	39.28	43.30	40.39	37.41	41.63	20- 30	19.54	36.64	15.7,15.7
40	42.46	37.91	31.84	35.32	40.77	36.45	31.36	38.37	30- 40	24.36	60.99	26.2,26.2
50	39.87	33.77	25.01	30.83	38.30	32.09	24.37	34.55	40- 50	26.85	87.84	37.8,37.8
60	36.83	29.37	17.62	26.18	35.17	27.45	16.87	30.24	50- 60	27.00	114.8	49.4,49.4
70	33.41	24.76	10.03	21.58	31.86	22.80	9.298	25.80	60- 70	25.08	139.9	60.2,60.2
80	29.87	20.51	3.318	17.54	28.37	18.67	2.738	21.60	70- 80	21.76	161.7	69.5,69.5
90	26.00	16.98	0.6855	14.10	24.48	15.15	0.4621	18.07	80- 90	18.09	179.8	77.3,77.3
100	21.58	13.27	0.7592	11.01	20.27	11.83	0.5074	14.20	90-100	14.90	194.7	83.7,83.7
110	17.97	11.33	0.8082	8.972	17.05	9.693	0.5963	12.04	100-110	11.57	206.2	88.7,88.7
120	14.97	9.721	0.8644	7.245	13.74	8.127	0.6381	9.956	110-120	9.068	215.3	92.6,92.6
130	12.54	7.970	0.9247	6.006	11.17	6.903	0.7185	8.404	120-130	6.921	222.2	95.5,95.5
140	10.21	5.719	0.9750	4.787	7.928	5.574	0.8040	5.936	130-140	4.782	227.0	97.6,97.6
150	7.968	4.209	1.083	3.603	5.348	4.287	1.005	4.592	140-150	2.971	230.0	98.9,98.9
160	5.763	3.389	1.104	2.400	4.317	3.078	1.093	3.783	150-160	1.668	231.7	99.6,99.6
170	2.529	2.867	1.109	1.236	2.469	1.892	1.122	3.463	160-170	0.7744	232.4	99.9,99.9
180	1.171	1.143	1.106	1.179	1.176	1.146	1.151	1.184	170-180	0.1865	232.6	100,100
DEG	LUMINOUS INTENSITY:cd									UNIT:lm		

Conical surface Flux(90deg): 74.253 lm

%lum = 31.9%

%lamp = 31.9%

Conical surface Flux(120deg): 114.85 lm

%lum = 49.4%

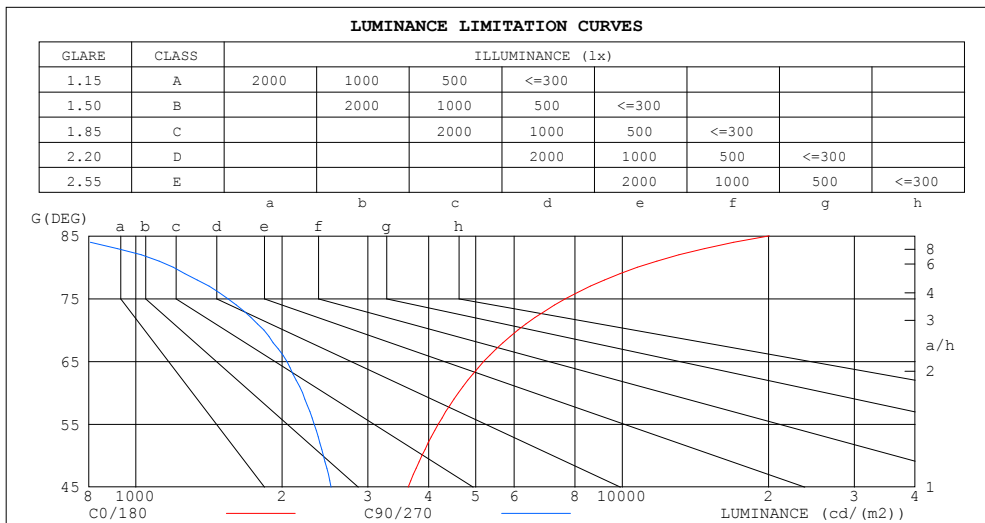
%lamp = 49.4%

C Range: 0 - 360DEG
 C Interval: 30.0DEG
 Test Speed: HIGH
 Temperature:25.3DEG
 Operators:LPC
 Test Date:2021-12-09

γ Range: 0 - 180DEG
 γ Interval: 1.0DEG
 Test System:EVERFINE GO-2000B_V1 SYSTEM V2.0.362
 Humidity:65.0%
 Test Distance:9.200m [K=1.0000]
 Remarks:

LUMINANCE LIMITATION CURVES

Test:U:24.00V I:0.3255A P:7.812W PF:1.000 Freq:50.00Hz Lamp Flux:232.617x1 lm		
NAME: SF21-24V-2835-120-2700+5700-90-2700	TYPE: 硅胶	WEIGHT:
SPEC.:	DIM.: 28mm*11.5mm	SERIAL No.:2021120901
MFR.: OLYMPIA	SUR.:1*0.016	Shielding Angle:



LUMINANCE cd/(m2)		
G (DEG)	C0/180	C90/270
85	20060	701
80	10752	1194
75	7650	1545
70	6106	1833
65	5195	2045
60	4604	2203
55	4188	2325
50	3877	2432
45	3633	2520

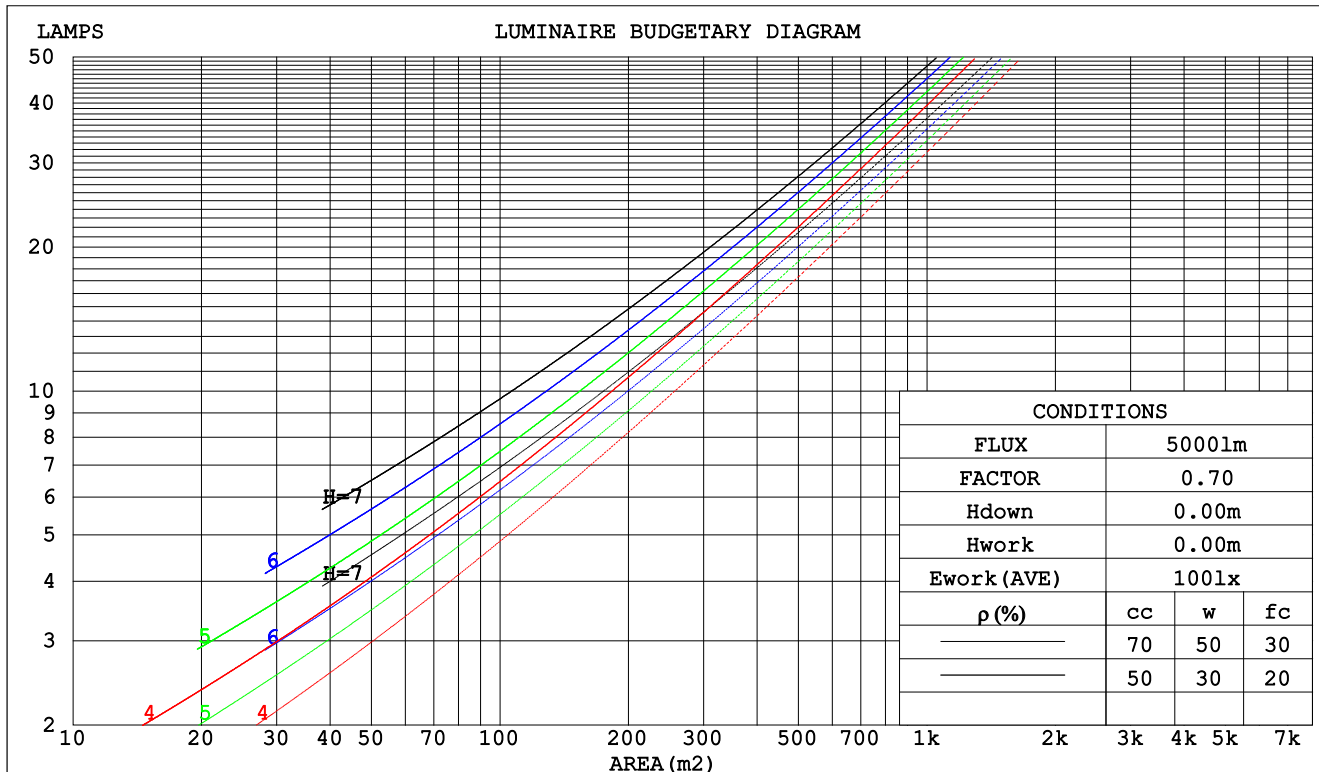
C Range: 0 - 360DEG
C Interval: 30.0DEG
Test Speed: HIGH
Temperature:25.3DEG
Operators:LPC
Test Date:2021-12-09

γ Range: 0 - 180DEG
 γ Interval: 1.0DEG
Test System:EVERFINE GO-2000B_V1 SYSTEM V2.0.362
Humidity:65.0%
Test Distance:9.200m [K=1.0000]
Remarks:

CU AND LUMINAIRE BUDGETARY ESTIMATE DIAGRAM

Test:U:24.00V I:0.3255A P:7.812W PF:1.000 Freq:50.00Hz Lamp Flux:232.617x1 lm		
NAME: SF21-24V-2835-120-2700+5700-90-2700	TYPE: 硅胶	WEIGHT:
SPEC.:	DIM.: 28mm*11.5mm	SERIAL No.:2021120901
MFR.: OLYMPIA	SUR.:1*0.016	Shielding Angle:

pcc	80%			70%			50%			30%			10%			0
pw	50%	30%	10%	50%	30%	10%	50%	30%	10%	50%	30%	10%	50%	30%	10%	0
pfc	20%			20%			20%			20%			20%			0
RCR	Coefficients of Utilization(CU)															
0.0	1.14	1.14	1.14	1.08	1.08	1.08	.98	.98	.98	.89	.89	.89	.81	.81	.81	.77
1.0	.94	.89	.84	.90	.85	.81	.81	.77	.74	.73	.70	.68	.66	.64	.62	.58
2.0	.81	.73	.66	.77	.70	.64	.69	.64	.59	.63	.58	.54	.56	.53	.49	.46
3.0	.70	.61	.54	.67	.58	.52	.60	.53	.48	.54	.49	.44	.49	.45	.41	.37
4.0	.61	.52	.45	.58	.50	.43	.53	.46	.40	.48	.42	.37	.43	.38	.34	.31
5.0	.54	.45	.38	.52	.43	.37	.47	.40	.34	.43	.37	.32	.39	.33	.29	.27
6.0	.49	.39	.33	.46	.38	.32	.42	.35	.30	.38	.32	.28	.35	.30	.26	.23
7.0	.44	.35	.28	.42	.34	.28	.38	.31	.26	.35	.29	.24	.32	.26	.22	.20
8.0	.40	.31	.25	.38	.30	.24	.35	.28	.23	.32	.26	.21	.29	.24	.20	.18
9.0	.36	.28	.22	.35	.27	.22	.32	.25	.20	.29	.23	.19	.27	.22	.18	.16
10.0	.33	.25	.20	.32	.25	.20	.30	.23	.18	.27	.21	.17	.25	.20	.16	.14



C Range: 0 - 360DEG
 C Interval: 30.0DEG
 Test Speed: HIGH
 Temperature:25.3DEG
 Operators:LPC
 Test Date:2021-12-09

γ Range: 0 - 180DEG
 γ Interval: 1.0DEG
 Test System:EVERFINE GO-2000B_V1 SYSTEM V2.0.362
 Humidity:65.0%
 Test Distance:9.200m [K=1.0000]
 Remarks:

WEC AND CCEC

Test:U:24.00V I:0.3255A P:7.812W PF:1.000 Freq:50.00Hz Lamp Flux:232.617x1 lm		
NAME: SF21-24V-2835-120-2700+5700-90-2700	TYPE: 硅胶	WEIGHT:
SPEC.:	DIM.: 28mm*11.5mm	SERIAL No.:2021120901
MFR.: OLYMPIA	SUR.:1*0.016	Shielding Angle:

pcc	80%			70%			50%			30%			10%			0	
pw	50%	30%	10%	50%	30%	10%	50%	30%	10%	50%	30%	10%	50%	30%	10%	0	
pfc	20%			20%			20%			20%			20%			0	
RCR	RCR:Room Cavity Ratio						Wall Exitance Coefficients(WEC)										
0.0																	
1.0	.388	.220	.070	.374	.213	.068	.347	.199	.064	.323	.186	.060	.300	.174	.056		
2.0	.334	.183	.056	.321	.177	.054	.297	.165	.051	.275	.154	.048	.254	.144	.045		
3.0	.296	.157	.047	.284	.152	.046	.262	.142	.043	.242	.133	.041	.223	.124	.038		
4.0	.266	.138	.041	.255	.134	.039	.235	.125	.037	.217	.117	.035	.200	.109	.033		
5.0	.241	.123	.036	.232	.119	.035	.214	.111	.033	.197	.104	.031	.181	.097	.029		
6.0	.221	.111	.032	.212	.107	.031	.196	.100	.029	.180	.094	.028	.166	.087	.026		
7.0	.204	.101	.029	.196	.097	.028	.181	.091	.026	.166	.085	.025	.153	.080	.023		
8.0	.189	.092	.026	.181	.089	.025	.168	.084	.024	.154	.078	.023	.142	.073	.021		
9.0	.176	.085	.024	.169	.082	.023	.156	.077	.022	.144	.072	.021	.133	.067	.019		
10.0	.165	.079	.022	.158	.076	.021	.146	.072	.020	.135	.067	.019	.125	.063	.018		

pcc	80%			70%			50%			30%			10%			0
pw	50%	30%	10%	50%	30%	10%	50%	30%	10%	50%	30%	10%	50%	30%	10%	0
pfc	20%			20%			20%			20%			20%			0
RCR	RCR:Room Cavity Ratio						Ceiling Cavity Exitance Coefficients(CCEC)									
0.0	.364	.364	.364	.311	.311	.311	.212	.212	.212	.122	.122	.122	.039	.039	.039	
1.0	.360	.330	.303	.308	.283	.261	.211	.195	.180	.121	.113	.105	.039	.036	.034	
2.0	.353	.307	.269	.303	.265	.232	.207	.183	.162	.120	.106	.095	.038	.034	.031	
3.0	.346	.291	.247	.297	.251	.214	.204	.174	.150	.118	.102	.089	.038	.033	.029	
4.0	.338	.279	.233	.290	.241	.203	.200	.168	.143	.115	.098	.084	.037	.032	.028	
5.0	.331	.269	.224	.284	.233	.194	.196	.163	.137	.113	.095	.081	.037	.031	.027	
6.0	.323	.261	.217	.278	.226	.189	.192	.158	.133	.111	.093	.079	.036	.030	.026	
7.0	.316	.255	.212	.272	.221	.184	.188	.155	.131	.109	.091	.078	.035	.030	.026	
8.0	.310	.249	.208	.266	.216	.181	.184	.152	.128	.107	.090	.077	.035	.029	.025	
9.0	.303	.244	.205	.261	.212	.178	.181	.149	.127	.105	.088	.076	.034	.029	.025	
10.0	.298	.240	.202	.256	.209	.176	.178	.147	.125	.104	.087	.075	.034	.029	.025	

C Range: 0 - 360DEG
 C Interval: 30.0DEG
 Test Speed: HIGH
 Temperature:25.3DEG
 Operators:LPC
 Test Date:2021-12-09

γ Range: 0 - 180DEG
 γ Interval: 1.0DEG
 Test System:EVERFINE GO-2000B_V1 SYSTEM V2.0.362
 Humidity:65.0%
 Test Distance:9.200m [K=1.0000]
 Remarks:

UGR(Unified Glare Rating) Table

Test:U:24.00V I:0.3255A P:7.812W PF:1.000 Freq:50.00Hz Lamp Flux:232.617x1 lm										
NAME: SF21-24V-2835-120-2700+5700-90-2700					TYPE:硅胶			WEIGHT:		
SPEC.:					DIM.: 28mm*11.5mm			SERIAL No.:2021120901		
MFR.: OLYMPIA					SUR.:1*0.016			Shielding Angle:		
ceiling/cavity	0.7	0.7	0.5	0.5	0.3	0.7	0.7	0.5	0.5	0.3
walls	0.5	0.3	0.5	0.3	0.3	0.5	0.3	0.5	0.3	0.3
working plane	0.2	0.2	0.2	0.2	0.2	0.2	0.2	0.2	0.2	0.2
Room dimensions	Viewed crosswise					Viewed endwise				
x = 2H y = 2H	22.1	23.4	22.6	24.0	24.6	19.4	20.7	20.0	21.3	21.9
3H	24.9	26.1	25.5	26.7	27.4	20.8	22.1	21.4	22.7	23.4
4H	26.5	27.6	27.1	28.2	29.0	21.4	22.5	22.0	23.2	23.9
6H	28.2	29.3	28.9	30.0	30.7	21.7	22.8	22.4	23.5	24.2
8H	29.2	30.3	29.9	30.9	31.7	21.8	22.9	22.5	23.5	24.3
12H	30.3	31.4	31.0	32.0	32.8	21.9	22.9	22.5	23.5	24.3
4H 2H	22.6	23.8	23.2	24.4	25.1	20.7	21.9	21.3	22.5	23.2
3H	25.7	26.7	26.3	27.4	28.1	22.5	23.5	23.2	24.2	25.0
4H	27.5	28.4	28.1	29.1	29.9	23.3	24.2	24.0	24.9	25.7
6H	29.4	30.3	30.1	31.0	31.8	23.9	24.8	24.6	25.5	26.3
8H	30.5	31.3	31.3	32.0	32.9	24.1	24.9	24.9	25.6	26.5
12H	31.8	32.5	32.5	33.3	34.1	24.3	25.0	25.0	25.7	26.6
8H 4H	27.8	28.6	28.5	29.3	30.2	24.6	25.4	25.3	26.1	27.0
6H	30.1	30.8	30.8	31.5	32.4	25.7	26.4	26.4	27.1	28.0
8H	31.4	32.0	32.2	32.8	33.7	26.2	26.8	26.9	27.5	28.4
12H	33.0	33.5	33.7	34.2	35.2	26.6	27.1	27.3	27.9	28.8
12H 4H	27.8	28.5	28.6	29.3	30.1	25.0	25.8	25.8	26.5	27.4
6H	30.2	30.8	31.0	31.6	32.5	26.4	27.0	27.2	27.8	28.7
8H	31.7	32.2	32.4	33.0	33.9	27.1	27.6	27.9	28.4	29.3
Variations with the observer position at spacings:										
S = 1.0H	+ 0.1 / - 0.1					+ 0.1 / - 0.1				
1.5H	+ 0.2 / - 0.3					+ 0.2 / - 0.3				
2.0H	+ 0.2 / - 0.3					+ 0.3 / - 0.4				

CIE Pub.117, 232.6 lm Total Lamp Luminous Flux Correct (8log(F/F0) = -5.1)

C Range: 0 - 360DEG
C Interval: 30.0DEG
Test Speed: HIGH
Temperature:25.3DEG
Operators:LPC
Test Date:2021-12-09

γ Range: 0 - 180DEG
γ Interval: 1.0DEG
Test System:EVERFINE GO-2000B_V1 SYSTEM V2.0.362
Humidity:65.0%
Test Distance:9.200m [K=1.0000]
Remarks:

UTILIZATION FACTORS TABLE

Test:U:24.00V I:0.3255A P:7.812W PF:1.000 Freq:50.00Hz Lamp Flux:232.617x1 lm		
NAME: SF21-24V-2835-120-2700+5700-90-2700	TYPE: 硅胶	WEIGHT:
SPEC.:	DIM.: 28mm*11.5mm	SERIAL No.:2021120901
MFR.: OLYMPIA	SUR.:1*0.016	Shielding Angle:

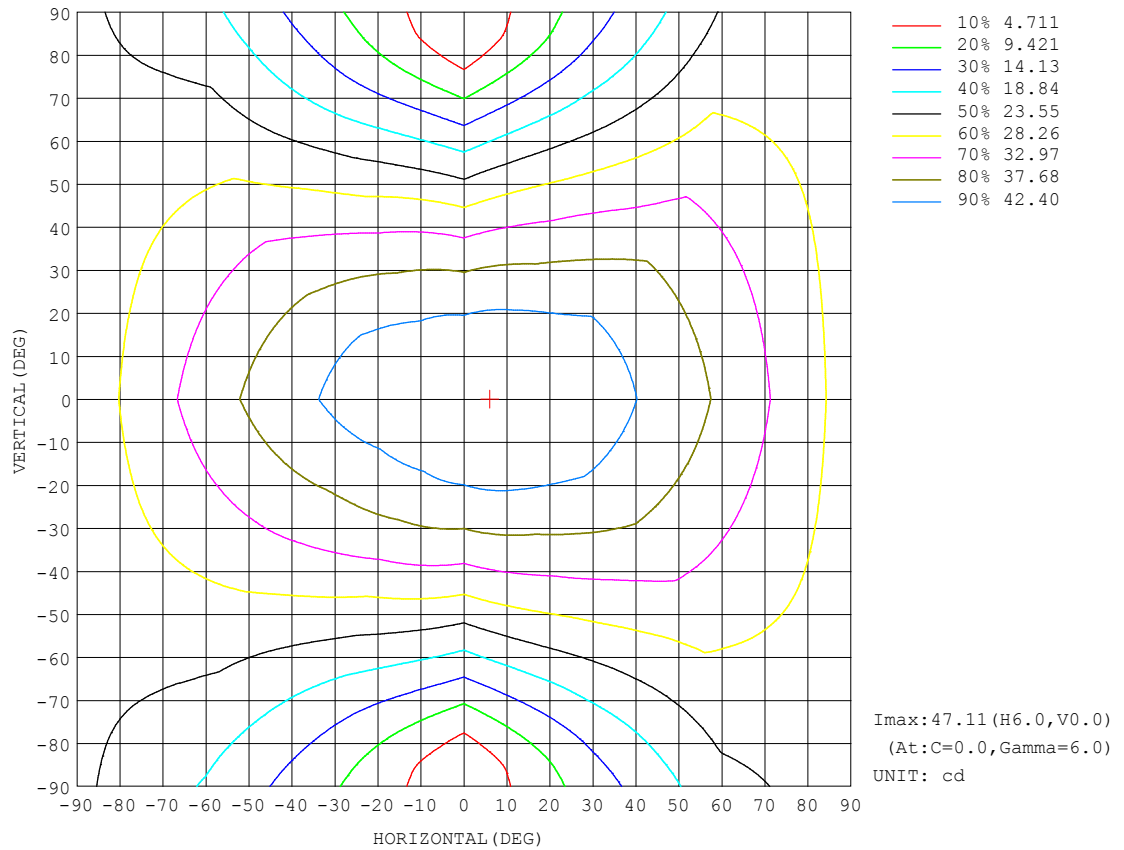
REFLECTANCE										
Ceiling	0.8	0.8	0.8	0.7	0.7	0.7	0.5	0.5	0.5	0
Walls	0.7	0.5	0.3	0.7	0.5	0.3	0.7	0.5	0.3	0
Working plane	0.2	0.2	0.2	0.2	0.2	0.2	0.2	0.2	0.2	0
ROOM INDEX	UTILIZATION FACTORS (PERCENT) $k(RI) \times RCR = 5$									
$k = 0.60$	46	34	27	45	33	26	43	32	26	19
0.80	55	42	34	53	41	34	50	40	33	25
1.00	63	50	41	61	49	41	57	49	39	30
1.25	70	57	48	67	55	47	62	52	45	35
1.50	75	62	54	72	61	53	67	57	50	39
2.00	82	71	62	79	69	61	72	64	57	45
2.50	87	76	68	83	74	66	76	68	62	49
3.00	91	81	73	87	78	71	79	72	67	52
4.00	95	87	80	91	84	78	83	77	72	56
5.00	98	91	85	94	87	82	86	80	76	59
ROOM INDEX	UF (total)									Direct
According to DIN EN 13032-2 2004			Suspended					SHRNOM = 1.25		

C Range: 0 - 360DEG
C Interval: 30.0DEG
Test Speed: HIGH
Temperature:25.3DEG
Operators:LPC
Test Date:2021-12-09

γ Range: 0 - 180DEG
 γ Interval: 1.0DEG
Test System:EVERFINE GO-2000B_V1 SYSTEM V2.0.362
Humidity:65.0%
Test Distance:9.200m [K=1.0000]
Remarks:

ISOCANDELA DIAGRAM

Test:U:24.00V I:0.3255A P:7.812W PF:1.000 Freq:50.00Hz Lamp Flux:232.617x1 lm		
NAME: SF21-24V-2835-120-2700+5700-90-2700	TYPE: 硅胶	WEIGHT:
SPEC.:	DIM.: 28mm*11.5mm	SERIAL No.:2021120901
MFR.: OLYMPIA	SUR.:1*0.016	Shielding Angle:

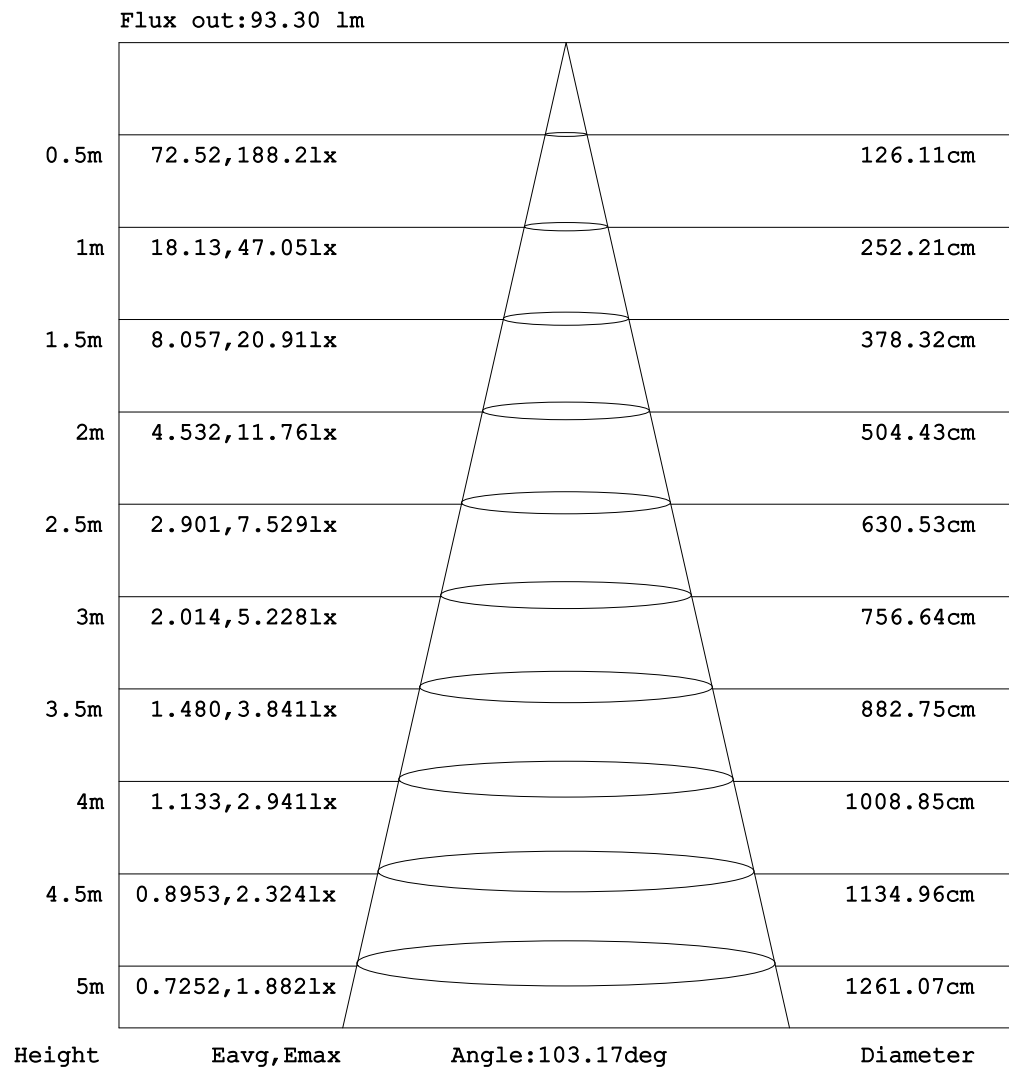


C Range: 0 - 360DEG
C Interval: 30.0DEG
Test Speed: HIGH
Temperature: 25.3DEG
Operators: LPC
Test Date: 2021-12-09

γ Range: 0 - 180DEG
 γ Interval: 1.0DEG
Test System: EVERFINE GO-2000B_V1 SYSTEM V2.0.362
Humidity: 65.0%
Test Distance: 9.200m [K=1.0000]
Remarks:

AAI Figure

Test:U:24.00V I:0.3255A P:7.812W PF:1.000 Freq:50.00Hz Lamp Flux:232.617x1 lm		
NAME: SF21-24V-2835-120-2700+5700-90-2700	TYPE: 硅胶	WEIGHT:
SPEC.:	DIM.: 28mm*11.5mm	SERIAL No.:2021120901
MFR.: OLYMPIA	SUR.:1*0.016	Shielding Angle:



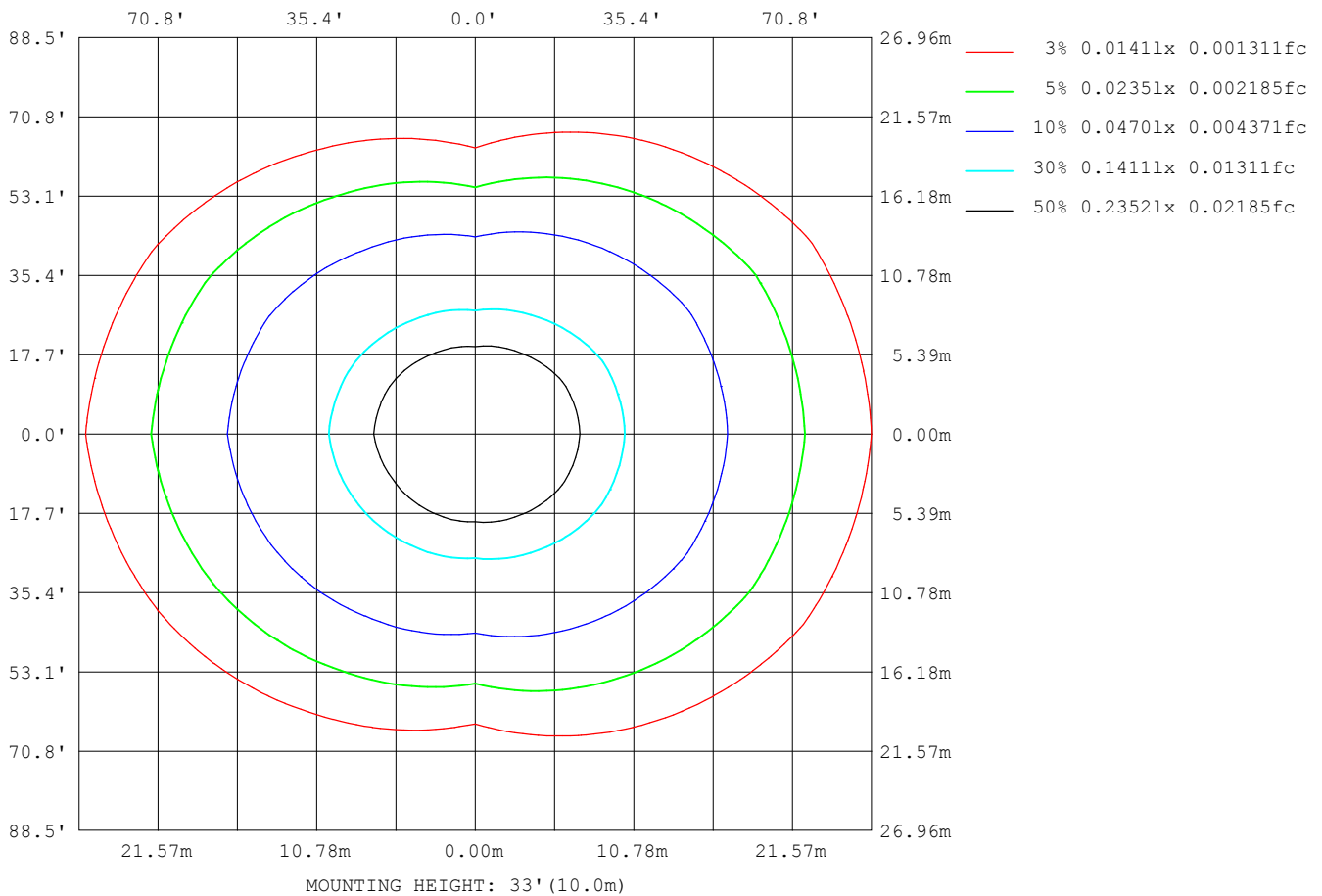
Note: The Curves indicate the illuminated area and the average illumination when the luminaire is at different distance.

C Range: 0 - 360DEG
 C Interval: 30.0DEG
 Test Speed: HIGH
 Temperature: 25.3DEG
 Operators: LPC
 Test Date: 2021-12-09

γ Range: 0 - 180DEG
 γ Interval: 1.0DEG
 Test System: EVERFINE GO-2000B_V1 SYSTEM V2.0.362
 Humidity: 65.0%
 Test Distance: 9.200m [K=1.0000]
 Remarks:

ISOLUX DIAGRAM

Test:U:24.00V I:0.3255A P:7.812W PF:1.000 Freq:50.00Hz Lamp Flux:232.617x1 lm		
NAME: SF21-24V-2835-120-2700+5700-90-2700	TYPE: 硅胶	WEIGHT:
SPEC.:	DIM.: 28mm*11.5mm	SERIAL No.:2021120901
MFR.: OLYMPIA	SUR.:1*0.016	Shielding Angle:



C Range: 0 - 360DEG
C Interval: 30.0DEG
Test Speed: HIGH
Temperature:25.3DEG
Operators:LPC
Test Date:2021-12-09

γ Range: 0 - 180DEG
γ Interval: 1.0DEG
Test System:EVERFINE GO-2000B_V1 SYSTEM V2.0.362
Humidity:65.0%
Test Distance:9.200m [K=1.0000]
Remarks:

LED Avg.L Report

Test:U:24.00V I:0.3255A P:7.812W PF:1.000 Freq:50.00Hz Lamp Flux:232.617x1 lm		
NAME: SF21-24V-2835-120-2700+5700-90-2700	TYPE:硅胶	WEIGHT:
SPEC.:	DIM.: 28mm*11.5mm	SERIAL No.:2021120901
MFR.: OLYMPIA	SUR.:1*0.016	Shielding Angle:

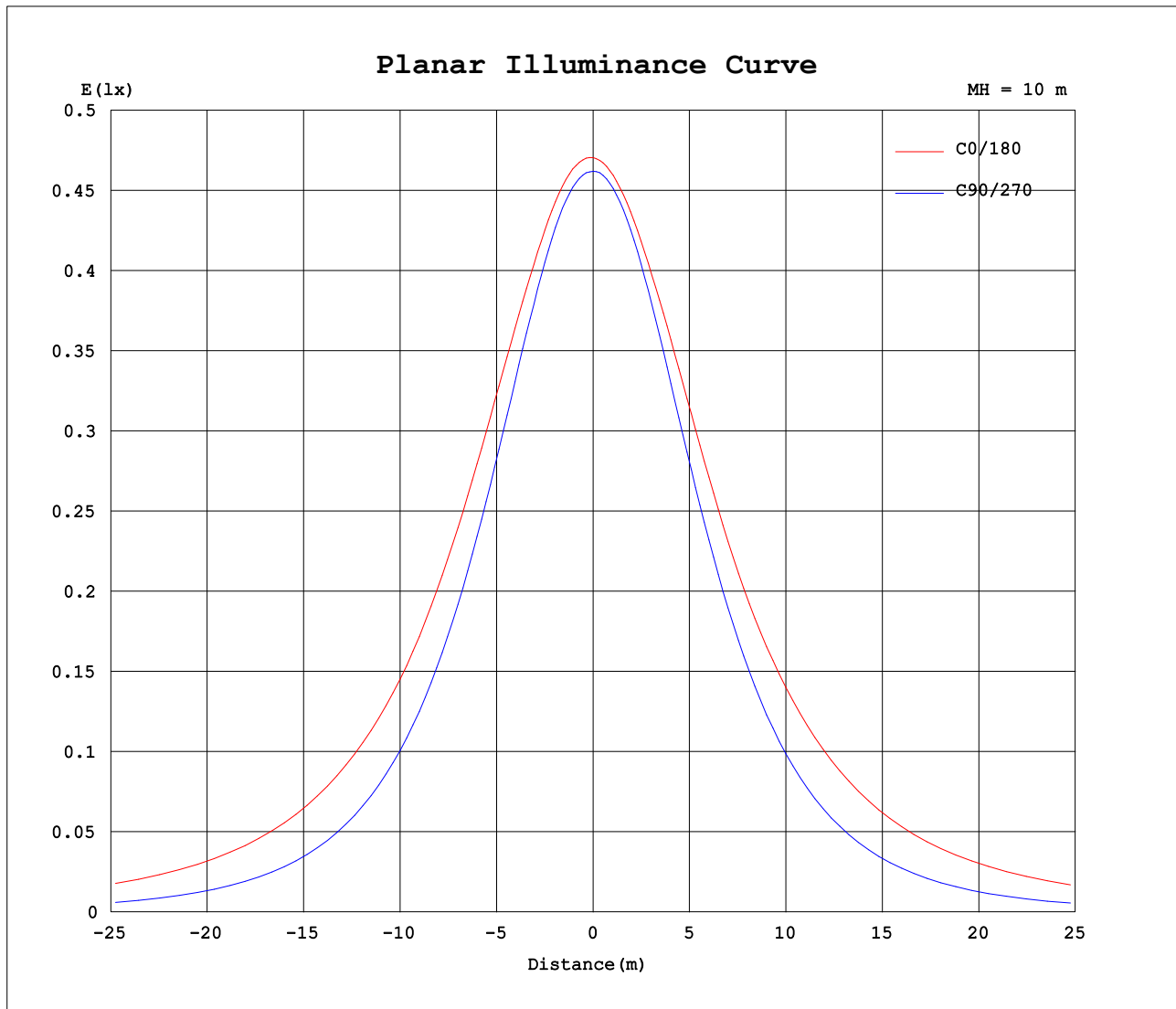
AvgL	cd/m2
L_0~180 (65) av	5077
L_0~180 (75) av	7465
L_0~180 (85) av	19526
L_90~270 (65) av	1989
L_90~270 (75) av	1470
L_90~270 (85) av	578
L_45 (65) av	3884
L_45 (75) av	5305
L_45 (85) av	13061

Standard: GB/T 29293-2012

C Range: 0 - 360DEG
C Interval: 30.0DEG
Test Speed: HIGH
Temperature:25.3DEG
Operators:LPC
Test Date:2021-12-09

γ Range: 0 - 180DEG
γ Interval: 1.0DEG
Test System:EVERFINE GO-2000B_V1 SYSTEM V2.0.362
Humidity:65.0%
Test Distance:9.200m [K=1.0000]
Remarks:

Planar Illuminance Curve



C Range: 0 - 360DEG
C Interval: 30.0DEG
Test Speed: HIGH
Temperature: 25.3DEG
Operators: LPC
Test Date: 2021-12-09

γ Range: 0 - 180DEG
 γ Interval: 1.0DEG
Test System: EVERFINE GO-2000B_V1 SYSTEM V2.0.362
Humidity: 65.0%
Test Distance: 9.200m [K=1.0000]
Remarks:

LUMINOUS DISTRIBUTION INTENSITY DATA

Test:U:24.00V I:0.3255A P:7.812W PF:1.000 Freq:50.00Hz Lamp Flux:232.617x1 lm		
NAME: SF21-24V-2835-120-2700+5700-90-2700	TYPE: 硅胶	WEIGHT:
SPEC.:	DIM.: 28mm*11.5mm	SERIAL No.:2021120901
MFR.: OLYMPIA	SUR.:1*0.016	Shielding Angle:

Table--1

UNIT: cd

C (DEG) γ (DEG)	0	30	60	90	120	150	180	210	240	270	300	330							
0	47.0	46.9	46.5	46.2	46.1	46.0	47.0	46.9	46.5	46.2	46.1	46.0							
5	47.1	46.9	46.5	46.0	45.7	45.5	46.8	46.5	46.1	46.0	46.1	46.3							
10	46.9	46.6	46.2	45.3	44.9	44.8	46.3	45.9	45.3	45.2	45.7	46.3							
15	46.4	46.1	45.2	44.1	43.6	44.0	45.7	45.1	44.1	43.9	44.9	45.9							
20	45.9	45.2	43.8	42.4	42.1	43.0	45.0	44.2	42.6	42.2	43.6	45.2							
25	45.3	44.1	42.0	40.2	40.4	41.7	44.3	43.1	40.9	40.0	41.9	44.4							
30	44.6	43.1	40.0	37.7	38.4	40.2	43.3	41.9	38.9	37.4	39.9	43.4							
35	43.6	41.9	37.8	34.9	36.1	38.5	42.1	40.3	36.8	34.5	37.8	42.4							
40	42.5	40.4	35.4	31.8	33.7	37.0	40.8	38.5	34.4	31.4	35.6	41.2							
45	41.1	38.7	33.1	28.5	31.0	35.3	39.6	36.9	31.7	28.0	33.3	39.8							
50	39.9	36.9	30.6	25.0	28.2	33.4	38.3	35.2	28.9	24.4	30.9	38.2							
55	38.4	35.2	28.0	21.3	25.6	31.5	36.8	33.4	26.1	20.7	28.4	36.4							
60	36.8	33.4	25.3	17.6	22.8	29.5	35.2	31.4	23.4	16.9	25.7	34.7							
65	35.1	31.5	22.6	13.8	20.1	27.6	33.5	29.5	20.7	13.1	23.1	33.0							
70	33.4	29.5	20.0	10.0	17.4	25.7	31.9	27.6	18.0	9.30	20.4	31.2							
75	31.7	27.6	17.5	6.40	15.0	23.9	30.1	25.8	15.5	5.78	18.0	29.3							
80	29.9	25.8	15.3	3.32	13.0	22.1	28.4	23.9	13.4	2.74	15.7	27.5							
85	28.0	24.0	13.4	0.98	11.2	20.2	26.5	22.1	11.6	0.64	13.8	25.7							
90	26.0	22.1	11.9	0.69	9.79	18.4	24.5	20.2	10.1	0.46	12.2	23.9							
95	24.0	20.3	10.6	0.69	8.69	16.8	22.5	18.5	8.92	0.47	10.9	22.2							
100	21.6	16.9	9.59	0.76	7.92	14.1	20.3	15.6	8.10	0.51	9.81	18.6							
105	19.7	15.9	8.15	0.78	5.88	13.3	18.6	14.7	6.17	0.59	7.80	17.7							
110	18.0	14.7	7.95	0.81	5.59	12.4	17.0	13.6	5.78	0.60	7.96	16.1							
115	16.4	13.6	7.37	0.83	5.11	10.7	15.0	12.3	5.27	0.60	6.72	14.6							
120	15.0	12.6	6.79	0.86	4.72	9.77	13.7	11.1	5.11	0.64	6.48	13.4							
125	13.7	11.7	6.07	0.89	4.49	8.95	12.5	10.1	4.93	0.67	6.06	12.5							
130	12.5	10.5	5.41	0.92	3.95	8.06	11.2	9.18	4.63	0.72	5.54	11.3							
135	11.4	8.73	4.88	0.95	3.71	6.94	9.91	8.27	4.23	0.76	4.93	9.39							
140	10.2	7.11	4.33	0.98	3.37	6.21	7.93	7.33	3.82	0.80	4.36	7.51							
145	9.07	6.02	3.85	1.00	3.03	5.26	7.24	6.36	3.45	0.85	3.93	6.54							
150	7.97	5.04	3.38	1.08	2.72	4.49	5.35	5.41	3.16	1.01	3.53	5.66							
155	6.90	4.21	3.31	1.09	2.18	3.77	4.45	4.57	2.76	1.04	3.72	4.80							
160	5.76	3.48	3.30	1.10	1.71	3.09	4.32	3.89	2.27	1.09	3.66	3.90							
165	4.76	2.88	3.23	1.11	1.20	2.31	3.93	3.22	1.88	1.11	3.57	3.39							
170	2.53	2.77	2.97	1.11	1.17	1.30	2.47	2.42	1.36	1.12	3.44	3.48							
175	2.00	2.41	2.79	1.11	1.14	1.13	1.58	1.77	1.20	1.13	3.26	3.22							
180	1.17	1.16	1.13	1.11	1.18	1.18	1.18	1.16	1.14	1.15	1.17	1.20							

C Range: 0 - 360DEG
C Interval: 30.0DEG
Test Speed: HIGH
Temperature:25.3DEG
Operators:LPC
Test Date:2021-12-09

γ Range: 0 - 180DEG
γ Interval: 1.0DEG
Test System:EVERFINE GO-2000B_V1 SYSTEM V2.0.362
Humidity:65.0%
Test Distance:9.200m [K=1.0000]
Remarks:

Photometric Data Table [cd]

G/C	0.0	30.0	60.0	90.0	120.0	150.0	180.0	210.0	240.0	270.0
0.0	47.05	46.86	46.48	46.19	46.11	45.99	47.05	46.86	46.48	46.19
3.0	47.11	46.89	46.55	46.15	45.93	45.71	46.91	46.68	46.30	46.14
6.0	47.11	46.86	46.52	45.94	45.58	45.36	46.70	46.43	45.97	45.87
9.0	46.98	46.70	46.29	45.56	45.12	44.94	46.41	46.06	45.52	45.42
12.0	46.75	46.46	45.78	44.87	44.45	44.49	46.05	45.61	44.91	44.77
15.0	46.45	46.10	45.15	44.07	43.64	44.00	45.67	45.14	44.14	43.93
18.0	46.10	45.58	44.37	43.05	42.76	43.45	45.28	44.57	43.27	42.94
21.0	45.79	44.95	43.45	41.95	41.77	42.77	44.91	43.99	42.31	41.77
24.0	45.44	44.35	42.41	40.67	40.72	41.99	44.47	43.39	41.25	40.44
27.0	45.03	43.74	41.25	39.23	39.60	41.13	43.93	42.64	40.12	39.00
30.0	44.56	43.09	40.01	37.74	38.37	40.19	43.30	41.86	38.93	37.41
33.0	44.01	42.37	38.68	36.07	37.05	39.14	42.60	40.97	37.66	35.70
36.0	43.40	41.56	37.32	34.31	35.66	38.16	41.79	39.98	36.30	33.91
39.0	42.71	40.71	35.90	32.47	34.18	37.30	40.98	38.90	34.86	32.00
42.0	41.91	39.77	34.50	30.53	32.61	36.32	40.35	37.83	33.34	30.00
45.0	41.10	38.73	33.07	28.51	31.00	35.28	39.65	36.94	31.74	27.95
48.0	40.37	37.65	31.62	26.46	29.33	34.21	38.86	35.95	30.08	25.82
51.0	39.61	36.58	30.10	24.30	27.71	33.06	38.02	34.88	28.37	23.62
54.0	38.74	35.59	28.53	22.10	26.13	31.88	37.12	33.79	26.68	21.44
57.0	37.81	34.54	26.93	19.87	24.50	30.69	36.16	32.63	25.09	19.16
60.0	36.83	33.43	25.30	17.62	22.83	29.53	35.17	31.44	23.45	16.87
63.0	35.81	32.27	23.67	15.30	21.18	28.36	34.20	30.26	21.80	14.59
66.0	34.79	31.08	22.04	13.06	19.55	27.25	33.20	29.11	20.16	12.30
69.0	33.75	29.89	20.49	10.77	17.92	26.12	32.20	27.96	18.54	10.05
72.0	32.73	28.72	19.02	8.527	16.44	25.01	31.18	26.87	16.96	7.867
75.0	31.68	27.60	17.54	6.398	15.04	23.91	30.15	25.76	15.52	5.781
78.0	30.60	26.51	16.13	4.448	13.78	22.81	29.08	24.66	14.21	3.860
81.0	29.50	25.41	14.84	2.795	12.63	21.69	28.00	23.57	13.02	2.225
84.0	28.36	24.32	13.71	1.348	11.58	20.56	26.88	22.48	11.94	0.8738
87.0	27.19	23.21	12.71	0.7034	10.61	19.46	25.67	21.33	10.96	0.4880
90.0	26.00	22.11	11.86	0.6855	9.788	18.41	24.48	20.22	10.08	0.4621
93.0	24.76	20.98	11.06	0.6836	9.084	17.43	23.31	19.17	9.335	0.4688
96.0	23.57	19.92	10.37	0.6987	8.511	16.50	22.16	18.16	8.728	0.4756
99.0	22.38	17.83	9.767	0.7340	8.048	14.36	20.80	15.68	8.236	0.4823
102.0	20.83	16.63	9.234	0.7692	7.506	13.83	19.59	15.25	7.795	0.5577
105.0	19.72	15.93	8.149	0.7842	5.884	13.30	18.60	14.66	6.172	0.5936
108.0	18.67	15.22	8.032	0.7992	5.649	12.76	17.65	14.05	6.034	0.5952
111.0	17.64	14.47	7.732	0.8122	5.514	11.86	16.76	13.24	5.668	0.5969
114.0	16.69	13.80	7.317	0.8243	5.183	10.97	15.41	12.58	5.337	0.5981
117.0	15.79	13.20	7.312	0.8493	4.977	10.28	14.51	11.84	5.171	0.6131
120.0	14.97	12.65	6.793	0.8644	4.715	9.774	13.74	11.15	5.106	0.6381
123.0	14.23	12.09	6.373	0.8845	4.379	9.276	13.01	10.51	4.876	0.6584
126.0	13.50	11.54	5.937	0.9046	4.418	8.763	12.24	9.907	4.864	0.6734
129.0	12.78	10.91	5.545	0.9098	4.088	8.236	11.44	9.325	4.703	0.7035
132.0	12.06	9.747	5.178	0.9298	3.870	7.713	10.64	8.852	4.482	0.7487
135.0	11.37	8.731	4.876	0.9499	3.715	6.942	9.908	8.274	4.231	0.7608
138.0	10.67	7.517	4.534	0.9600	3.509	6.542	8.789	7.532	3.989	0.7789
141.0	9.979	6.842	4.218	0.9801	3.283	6.019	7.340	7.089	3.743	0.8091
144.0	9.300	6.180	3.956	0.9952	3.082	5.461	7.560	6.540	3.522	0.8393
147.0	8.627	5.612	3.620	1.026	2.886	4.929	6.509	5.962	3.307	0.8993
150.0	7.968	5.039	3.378	1.083	2.720	4.487	5.348	5.409	3.165	1.005
153.0	7.330	4.497	3.277	1.089	2.409	4.069	4.598	4.937	2.919	1.030
156.0	6.716	4.055	3.322	1.096	2.077	3.642	4.361	4.439	2.678	1.065
159.0	6.079	3.612	3.307	1.102	1.820	3.215	4.312	4.012	2.366	1.089
162.0	5.334	3.195	3.262	1.107	1.434	2.843	4.241	3.670	2.085	1.101
165.0	4.762	2.885	3.227	1.107	1.205	2.311	3.933	3.223	1.884	1.112
168.0	2.716	2.854	3.087	1.108	1.176	1.833	3.134	2.750	1.632	1.119
171.0	2.433	2.729	2.935	1.109	1.164	1.136	2.136	2.293	1.332	1.123
174.0	2.093	2.487	2.820	1.110	1.144	1.129	1.643	1.891	1.234	1.128
177.0	1.805	1.988	2.160	1.111	1.126	1.126	1.471	1.354	1.136	1.151
180.0	1.171	1.161	1.126	1.106	1.176	1.181	1.176	1.156	1.136	1.151
G/C	300.0	330.0								
0.0	46.11	45.99								
3.0	46.12	46.18								
6.0	46.04	46.27								
9.0	45.82	46.28								
12.0	45.41	46.19								
15.0	44.86	45.94								
18.0	44.14	45.55								
21.0	43.25	45.09								
24.0	42.25	44.55								
27.0	41.11	43.97								
30.0	39.89	43.36								

C Range: 0 - 360DEG
 C Interval: 30.0DEG
 Test Speed: HIGH
 Temperature: 25.3DEG
 Operators: LPC
 Test Date: 2021-12-09

γ Range: 0 - 180DEG
 γ Interval: 1.0DEG
 Test System: EVERFINE GO-2000B_V1 SYSTEM V2.0.362
 Humidity: 65.0%
 Test Distance: 9.200m [K=1.0000]
 Remarks:

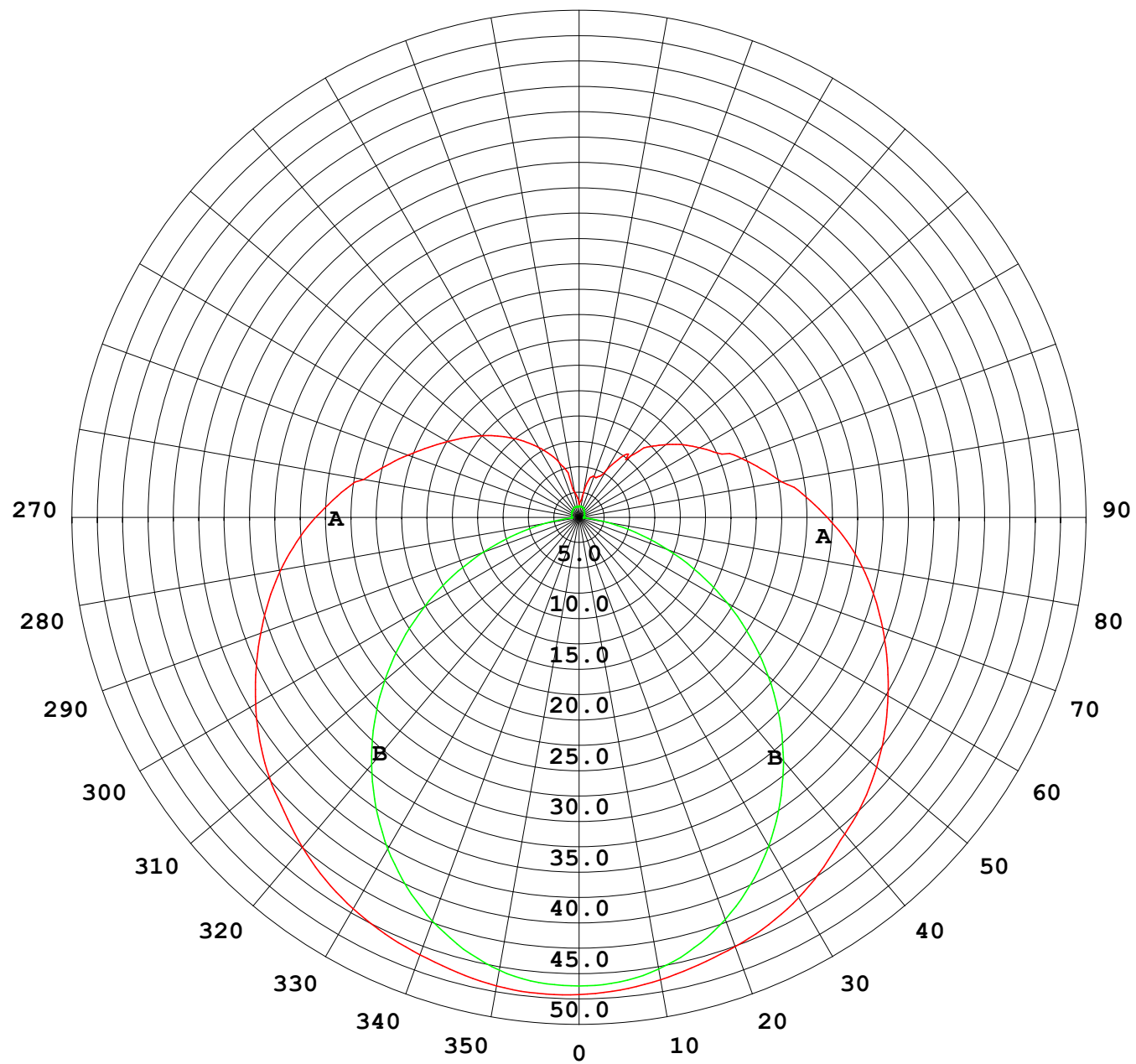
Photometric Data Table [cd]

33.0	38.63	42.79
36.0	37.35	42.15
39.0	36.02	41.42
42.0	34.67	40.63
45.0	33.30	39.77
48.0	31.91	38.84
51.0	30.43	37.83
54.0	28.90	36.78
57.0	27.34	35.72
60.0	25.75	34.74
63.0	24.14	33.73
66.0	22.52	32.66
69.0	20.93	31.54
72.0	19.46	30.40
75.0	18.01	29.28
78.0	16.62	28.19
81.0	15.28	27.15
84.0	14.13	26.08
87.0	13.09	24.99
90.0	12.20	23.94
93.0	11.44	22.89
96.0	10.72	21.86
99.0	10.07	19.49
102.0	9.186	18.36
105.0	7.801	17.68
108.0	8.151	16.83
111.0	7.872	15.83
114.0	7.335	14.88
117.0	6.873	14.04
120.0	6.477	13.44
123.0	6.226	12.83
126.0	5.949	12.39
129.0	5.662	11.72
132.0	5.306	10.42
135.0	4.934	9.391
138.0	4.557	8.316
141.0	4.226	7.379
144.0	4.020	6.757
147.0	3.798	6.178
150.0	3.528	5.655
153.0	3.615	5.153
156.0	3.724	4.615
159.0	3.704	4.082
162.0	3.658	3.615
165.0	3.568	3.387
168.0	3.513	3.498
171.0	3.417	3.418
174.0	3.282	3.268
177.0	2.875	3.136
180.0	1.166	1.201

C Range: 0 - 360DEG
C Interval: 30.0DEG
Test Speed: HIGH
Temperature: 25.3DEG
Operators: LPC
Test Date: 2021-12-09

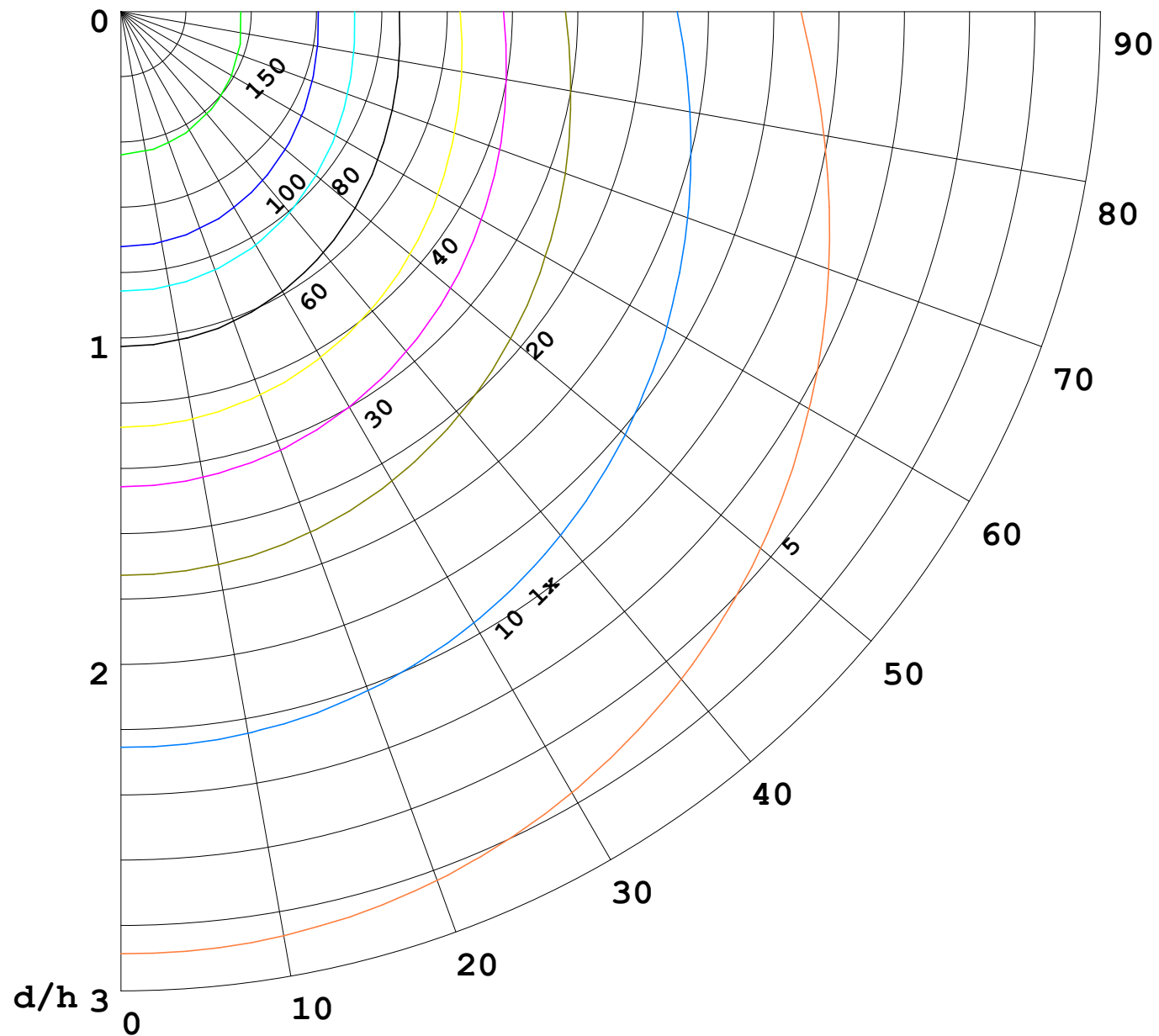
γ Range: 0 - 180DEG
γ Interval: 1.0DEG
Test System: EVERFINE GO-2000B_V1 SYSTEM V2.0.362
Humidity: 65.0%
Test Distance: 9.200m [K=1.0000]
Remarks:

I (cd)



1000 lm

$\kappa = 1$



F = 5000 lm
 K = 0.7
 Hcc = 0.0 m
 Hfc = 0.0 m
 Eave = 100 lx

	Pcc	Pw	Pfc
—	70	50	30
—	50	30	20

