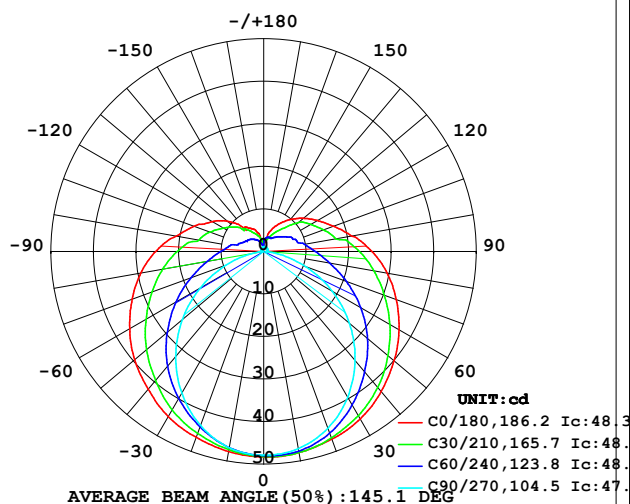


LUMINAIRE PHOTOMETRIC TEST REPORT

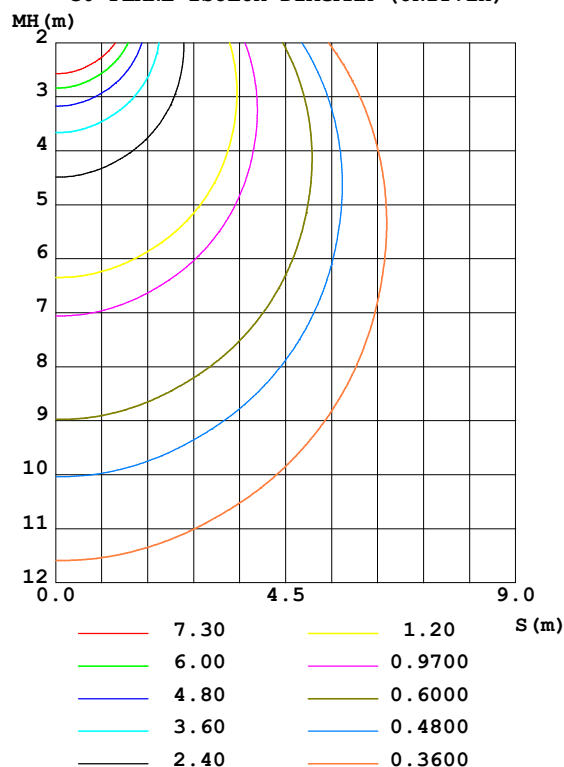
Test:U:24.00V I:0.3333A P:7.999W PF:1.000 Freq:50.00Hz Lamp Flux:237.784x1 lm		
NAME: SF21-24V-2835-120-3000+5700-80-5700	TYPE: 硅胶	WEIGHT:
SPEC.:	DIM.: 28mm*11.5mm	SERIAL No.:2021120905
MFR.: OLYMPIA	SUR.:1*0.016	Shielding Angle:

DATA OF LAMP		PHOTOMETRIC DATA Eff: 29.73 lm/W			
MODEL	2835	I _{max} (cd)	48.37	S/MH (C0/180)	1.40
NOMINAL POWER (W)	7.5	LOR (%)	100.0	S/MH (C90/270)	1.20
RATED VOLTAGE (V)	24	TOTAL FLUX (lm)	237.78	η UP, DN (C0-180)	11.1, 38.9
NOMINAL FLUX (lm)	237.784	CIE CLASS	SEMI-D.	η UP, DN (C180-360)	11.2, 38.8
LAMPS INSIDE	1	η up (%)	22.3	CIBSE SHR NOM	1.50
TEST VOLTAGE (V)	24	η down (%)	77.7	CIBSE SHR MAX	1.55

LUMINOUS INTENSITY DISTRIBUTION DIAGRAM



C0 PLANE ISOLUX DIAGRAM (UNIT: lx)



C Range: 0 - 360DEG
 C Interval: 30.0DEG
 Test Speed: HIGH
 Temperature: 25.3DEG
 Operators: LPC
 Test Date: 2021-12-09

γ Range: 0 - 180DEG
 γ Interval: 1.0DEG
 Test System: EVERFINE GO-2000B_V1 SYSTEM V2.0.362
 Humidity: 65.0%
 Test Distance: 9.200m [K=1.0000]
 Remarks:

ZONAL FLUX DIAGRAM

ZONAL FLUX DIAGRAM:

γ	C0	C45	C90	C135	C180	C225	C270	C315	γ	Φ zone	Φ total	%lum, lamp
10	48.01	47.84	47.08	46.84	47.75	47.08	46.82	47.72	0- 10	4.556	4.556	1.92,1.92
20	46.95	46.02	44.21	44.60	46.49	44.69	43.47	45.82	10- 20	13.13	17.69	7.44,7.44
30	45.44	43.10	39.56	41.28	44.87	41.48	38.49	42.87	20- 30	20.23	37.91	15.9,15.9
40	42.99	39.34	33.43	37.06	42.23	37.37	32.21	39.40	30- 40	25.19	63.10	26.5,26.5
50	40.04	35.00	26.34	32.39	39.61	32.79	24.99	35.33	40- 50	27.71	90.81	38.2,38.2
60	36.73	30.31	18.55	27.45	36.36	27.90	17.20	30.70	50- 60	27.77	118.6	49.9,49.9
70	33.18	25.47	10.57	22.62	32.92	23.07	9.399	25.94	60- 70	25.68	144.3	60.7,60.7
80	29.49	21.03	3.488	18.38	29.33	18.81	2.658	21.53	70- 80	22.17	166.4	70,70
90	25.47	17.34	0.6684	14.73	25.40	15.21	0.4439	17.85	80- 90	18.35	184.8	77.7,77.7
100	21.05	13.50	0.7693	11.21	20.86	11.81	0.5275	13.99	90-100	15.00	199.8	84,84
110	17.46	11.54	0.8193	9.225	17.44	9.665	0.6131	11.82	100-110	11.61	211.4	88.9,88.9
120	14.59	9.838	0.8795	7.425	14.06	7.994	0.6582	9.941	110-120	9.102	220.5	92.7,92.7
130	12.17	8.010	0.9399	6.269	11.04	6.705	0.7486	8.273	120-130	6.901	227.4	95.6,95.6
140	9.838	5.784	0.9902	5.093	7.133	5.383	0.8393	5.760	130-140	4.722	232.1	97.6,97.6
150	7.606	4.344	1.126	4.015	6.301	4.229	0.9950	4.446	140-150	2.965	235.1	98.9,98.9
160	5.421	3.525	1.130	2.819	5.074	3.141	1.065	3.601	150-160	1.735	236.8	99.6,99.6
170	2.383	2.995	1.133	1.560	2.104	1.978	1.084	3.226	160-170	0.7901	237.6	99.9,99.9
180	1.206	1.171	1.136	1.148	1.201	1.176	1.101	1.143	170-180	0.1880	237.8	100,100
DEG	LUMINOUS INTENSITY:cd									UNIT:lm		

Conical surface Flux(90deg): 76.796 lm

%lum = 32.3%

%lamp = 32.3%

Conical surface Flux(120deg): 118.58 lm

%lum = 49.9%

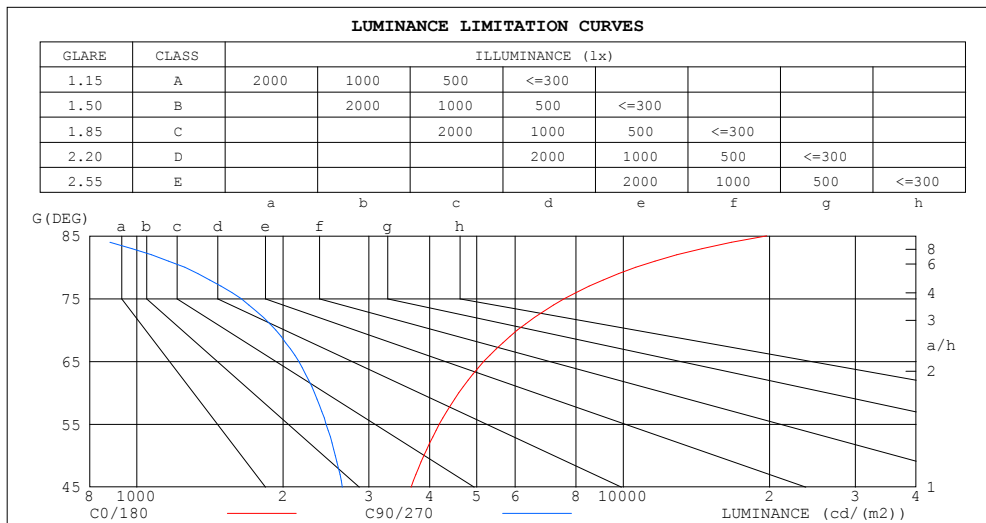
%lamp = 49.9%

C Range: 0 - 360DEG
 C Interval: 30.0DEG
 Test Speed: HIGH
 Temperature:25.3DEG
 Operators:LPC
 Test Date:2021-12-09

γ Range: 0 - 180DEG
 γ Interval: 1.0DEG
 Test System:EVERFINE GO-2000B_V1 SYSTEM V2.0.362
 Humidity:65.0%
 Test Distance:9.200m [K=1.0000]
 Remarks:

LUMINANCE LIMITATION CURVES

Test:U:24.00V I:0.3333A P:7.999W PF:1.000 Freq:50.00Hz Lamp Flux:237.784x1 lm		
NAME: SF21-24V-2835-120-3000+5700-80-5700	TYPE: 硅胶	WEIGHT:
SPEC.:	DIM.: 28mm*11.5mm	SERIAL No.:2021120905
MFR.: OLYMPIA	SUR.:1*0.016	Shielding Angle:



LUMINANCE cd/(m2)		
G (DEG)	C0/180	C90/270
85	19739	762
80	10612	1255
75	7575	1638
70	6064	1931
65	5171	2152
60	4591	2319
55	4188	2451
50	3893	2561
45	3666	2647

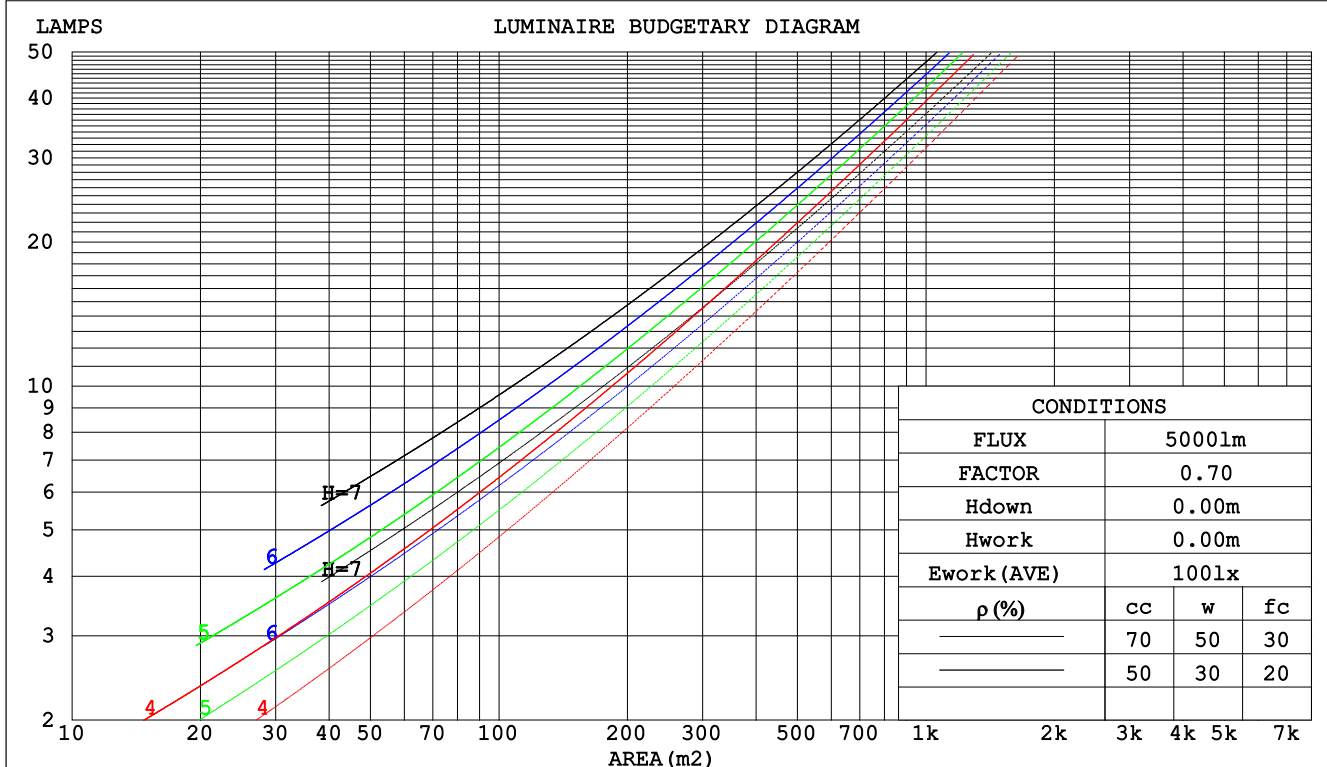
C Range: 0 - 360DEG
C Interval: 30.0DEG
Test Speed: HIGH
Temperature:25.3DEG
Operators:LPC
Test Date:2021-12-09

γ Range: 0 - 180DEG
 γ Interval: 1.0DEG
Test System:EVERFINE GO-2000B_V1 SYSTEM V2.0.362
Humidity:65.0%
Test Distance:9.200m [K=1.0000]
Remarks:

CU AND LUMINAIRE BUDGETARY ESTIMATE DIAGRAM

Test:U:24.00V I:0.3333A P:7.999W PF:1.000 Freq:50.00Hz Lamp Flux:237.784x1 lm		
NAME: SF21-24V-2835-120-3000+5700-80-5700	TYPE: 硅胶	WEIGHT:
SPEC.:	DIM.: 28mm*11.5mm	SERIAL No.:2021120905
MFR.: OLYMPIA	SUR.:1*0.016	Shielding Angle:

pcc	80%			70%			50%			30%			10%			0
pw	50%	30%	10%	50%	30%	10%	50%	30%	10%	50%	30%	10%	50%	30%	10%	0
pfc	20%			20%			20%			20%			20%			0
RCR	RCR:Room Cavity Ratio						Coefficients of Utilization(CU)									
0.0	1.14	1.14	1.14	1.09	1.09	1.09	.99	.99	.99	.90	.90	.90	.82	.82	.82	.78
1.0	.95	.89	.84	.90	.85	.81	.82	.78	.74	.74	.71	.68	.67	.64	.62	.58
2.0	.81	.73	.66	.77	.70	.64	.70	.64	.59	.63	.58	.54	.57	.53	.50	.46
3.0	.70	.61	.54	.67	.59	.52	.60	.54	.48	.55	.49	.45	.49	.45	.41	.38
4.0	.61	.52	.45	.59	.50	.43	.53	.46	.40	.48	.42	.37	.44	.39	.35	.32
5.0	.54	.45	.38	.52	.43	.37	.47	.40	.34	.43	.37	.32	.39	.34	.30	.27
6.0	.49	.39	.33	.47	.38	.32	.43	.35	.30	.39	.32	.28	.35	.30	.26	.23
7.0	.44	.35	.29	.42	.34	.28	.38	.31	.26	.35	.29	.24	.32	.27	.23	.20
8.0	.40	.31	.25	.38	.30	.25	.35	.28	.23	.32	.26	.22	.29	.24	.20	.18
9.0	.36	.28	.23	.35	.27	.22	.32	.25	.21	.30	.24	.19	.27	.22	.18	.16
10.0	.34	.26	.20	.32	.25	.20	.30	.23	.19	.27	.22	.17	.25	.20	.16	.14



C Range: 0 - 360DEG
 C Interval: 30.0DEG
 Test Speed: HIGH
 Temperature:25.3DEG
 Operators:LPC
 Test Date:2021-12-09

γ Range: 0 - 180DEG
 γ Interval: 1.0DEG
 Test System:EVERFINE GO-2000B_V1 SYSTEM V2.0.362
 Humidity:65.0%
 Test Distance:9.200m [K=1.0000]
 Remarks:

WEC AND CCEC

Test:U:24.00V I:0.3333A P:7.999W PF:1.000 Freq:50.00Hz Lamp Flux:237.784x1 lm		
NAME: SF21-24V-2835-120-3000+5700-80-5700	TYPE: 硅胶	WEIGHT:
SPEC.:	DIM.: 28mm*11.5mm	SERIAL No.:2021120905
MFR.: OLYMPIA	SUR.:1*0.016	Shielding Angle:

pcc	80%			70%			50%			30%			10%			0	
pw	50%	30%	10%	50%	30%	10%	50%	30%	10%	50%	30%	10%	50%	30%	10%	0	
pfc	20%			20%			20%			20%			20%			0	
RCR	RCR:Room Cavity Ratio						Wall Exitance Coefficients(WEC)										
0.0																	
1.0	.387	.220	.070	.373	.213	.068	.346	.199	.063	.322	.186	.060	.300	.174	.056		
2.0	.333	.183	.056	.320	.176	.054	.297	.165	.051	.275	.154	.048	.254	.144	.045		
3.0	.295	.157	.047	.284	.152	.046	.262	.142	.043	.242	.133	.041	.224	.124	.038		
4.0	.265	.138	.041	.255	.133	.039	.235	.125	.037	.217	.117	.035	.200	.109	.033		
5.0	.241	.123	.036	.232	.119	.035	.214	.111	.033	.197	.104	.031	.182	.097	.029		
6.0	.221	.111	.032	.212	.107	.031	.196	.100	.029	.181	.094	.028	.166	.088	.026		
7.0	.204	.101	.029	.196	.098	.028	.181	.091	.026	.167	.085	.025	.154	.080	.023		
8.0	.189	.092	.026	.182	.089	.025	.168	.084	.024	.155	.078	.023	.143	.073	.021		
9.0	.176	.085	.024	.169	.082	.023	.157	.077	.022	.145	.072	.021	.133	.068	.020		
10.0	.165	.079	.022	.158	.077	.021	.147	.072	.020	.136	.067	.019	.125	.063	.018		

pcc	80%			70%			50%			30%			10%			0
pw	50%	30%	10%	50%	30%	10%	50%	30%	10%	50%	30%	10%	50%	30%	10%	0
pfc	20%			20%			20%			20%			20%			0
RCR	RCR:Room Cavity Ratio						Ceiling Cavity Exitance Coefficients(CCEC)									
0.0	.360	.360	.360	.308	.308	.308	.210	.210	.210	.121	.121	.121	.039	.039	.039	
1.0	.357	.327	.300	.305	.280	.258	.209	.193	.178	.120	.112	.104	.039	.036	.034	
2.0	.350	.304	.265	.300	.262	.229	.206	.181	.160	.119	.105	.094	.038	.034	.031	
3.0	.343	.288	.244	.294	.248	.212	.202	.172	.148	.116	.101	.087	.037	.033	.029	
4.0	.335	.275	.230	.287	.238	.200	.198	.166	.141	.114	.097	.083	.037	.032	.027	
5.0	.327	.266	.220	.281	.230	.192	.194	.161	.135	.112	.094	.080	.036	.031	.026	
6.0	.320	.258	.213	.275	.223	.186	.190	.156	.131	.110	.092	.078	.036	.030	.026	
7.0	.313	.251	.208	.269	.218	.181	.186	.153	.129	.108	.090	.077	.035	.029	.025	
8.0	.306	.246	.204	.264	.213	.178	.182	.150	.126	.106	.088	.075	.034	.029	.025	
9.0	.300	.241	.201	.258	.209	.176	.179	.147	.125	.104	.087	.074	.034	.029	.025	
10.0	.294	.237	.199	.254	.206	.174	.176	.145	.123	.103	.086	.074	.033	.028	.024	

C Range: 0 - 360DEG
 C Interval: 30.0DEG
 Test Speed: HIGH
 Temperature:25.3DEG
 Operators:LPC
 Test Date:2021-12-09

γ Range: 0 - 180DEG
 γ Interval: 1.0DEG
 Test System:EVERFINE GO-2000B_V1 SYSTEM V2.0.362
 Humidity:65.0%
 Test Distance:9.200m [K=1.0000]
 Remarks:

UGR(Unified Glare Rating) Table

Test:U:24.00V I:0.3333A P:7.999W PF:1.000 Freq:50.00Hz Lamp Flux:237.784x1 lm										
NAME: SF21-24V-2835-120-3000+5700-80-5700					TYPE: 硅胶			WEIGHT:		
SPEC.:					DIM.: 28mm*11.5mm			SERIAL No.:2021120905		
MFR.: OLYMPIA					SUR.:1*0.016			Shielding Angle:		
ceiling/cavity	0.7	0.7	0.5	0.5	0.3	0.7	0.7	0.5	0.5	0.3
walls	0.5	0.3	0.5	0.3	0.3	0.5	0.3	0.5	0.3	0.3
working plane	0.2	0.2	0.2	0.2	0.2	0.2	0.2	0.2	0.2	0.2
Room dimensions	Viewed crosswise					Viewed endwise				
x = 2H y = 2H	22.0	23.4	22.6	23.9	24.6	19.6	20.9	20.1	21.4	22.1
3H	24.8	26.0	25.4	26.6	27.3	21.0	22.2	21.6	22.8	23.5
4H	26.4	27.5	27.0	28.1	28.8	21.5	22.7	22.2	23.3	24.0
6H	28.1	29.2	28.7	29.8	30.5	21.9	23.0	22.5	23.6	24.4
8H	29.1	30.1	29.7	30.8	31.5	22.0	23.0	22.6	23.7	24.4
12H	30.2	31.2	30.8	31.8	32.6	22.0	23.0	22.7	23.7	24.4
4H 2H	22.6	23.8	23.2	24.4	25.1	20.9	22.0	21.5	22.6	23.3
3H	25.6	26.7	26.3	27.3	28.1	22.6	23.7	23.3	24.3	25.1
4H	27.4	28.3	28.1	29.0	29.8	23.4	24.4	24.1	25.0	25.8
6H	29.3	30.2	30.0	30.9	31.7	24.1	24.9	24.8	25.6	26.4
8H	30.4	31.2	31.1	31.9	32.7	24.3	25.0	25.0	25.8	26.6
12H	31.7	32.4	32.4	33.1	34.0	24.4	25.1	25.1	25.8	26.7
8H 4H	27.7	28.5	28.5	29.2	30.1	24.7	25.5	25.4	26.2	27.0
6H	30.0	30.7	30.8	31.4	32.3	25.8	26.5	26.5	27.2	28.1
8H	31.3	31.9	32.1	32.7	33.6	26.3	26.9	27.0	27.6	28.5
12H	32.8	33.3	33.6	34.1	35.0	26.7	27.2	27.4	27.9	28.9
12H 4H	27.8	28.5	28.5	29.2	30.1	25.1	25.8	25.9	26.6	27.4
6H	30.1	30.7	30.9	31.5	32.4	26.5	27.1	27.2	27.8	28.7
8H	31.6	32.1	32.3	32.9	33.8	27.2	27.7	27.9	28.5	29.4
Variations with the observer position at spacings:										
S = 1.0H	+ 0.1 / - 0.1					+ 0.1 / - 0.1				
1.5H	+ 0.2 / - 0.3					+ 0.2 / - 0.3				
2.0H	+ 0.3 / - 0.4					+ 0.3 / - 0.4				

CIE Pub.117, 237.8 lm Total Lamp Luminous Flux Correct (8log(F/F0) = -5.0)

C Range: 0 - 360DEG
 C Interval: 30.0DEG
 Test Speed: HIGH
 Temperature:25.3DEG
 Operators:LPC
 Test Date:2021-12-09

γ Range: 0 - 180DEG
 γ Interval: 1.0DEG
 Test System:EVERFINE GO-2000B_V1 SYSTEM V2.0.362
 Humidity:65.0%
 Test Distance:9.200m [K=1.0000]
 Remarks:

UTILIZATION FACTORS TABLE

Test:U:24.00V I:0.3333A P:7.999W PF:1.000 Freq:50.00Hz Lamp Flux:237.784x1 lm		
NAME: SF21-24V-2835-120-3000+5700-80-5700	TYPE: 硅胶	WEIGHT:
SPEC.:	DIM.: 28mm*11.5mm	SERIAL No.:2021120905
MFR.: OLYMPIA	SUR.:1*0.016	Shielding Angle:

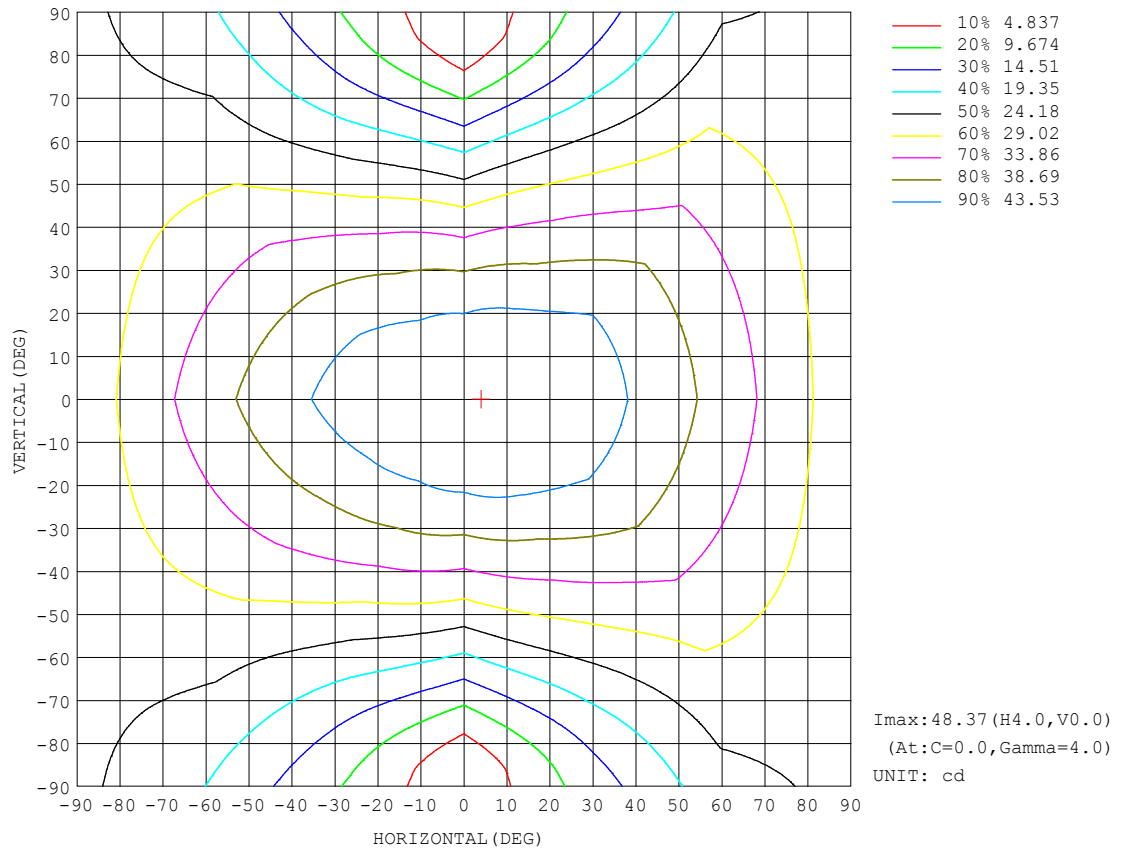
REFLECTANCE										
Ceiling	0.8	0.8	0.8	0.7	0.7	0.7	0.5	0.5	0.5	0
Walls	0.7	0.5	0.3	0.7	0.5	0.3	0.7	0.5	0.3	0
Working plane	0.2	0.2	0.2	0.2	0.2	0.2	0.2	0.2	0.2	0
ROOM INDEX	UTILIZATION FACTORS (PERCENT) $k(RI) \times RCR = 5$									
$k = 0.60$	46	34	27	45	33	26	43	32	26	19
0.80	55	42	34	54	42	34	51	40	33	25
1.00	63	50	42	61	49	41	57	49	40	30
1.25	70	57	49	67	56	48	63	53	46	36
1.50	75	63	54	72	61	53	67	57	50	39
2.00	82	71	63	79	69	61	73	64	58	45
2.50	87	77	68	83	74	66	76	69	63	49
3.00	91	81	74	87	78	71	79	73	67	52
4.00	95	87	81	91	84	78	83	78	73	57
5.00	99	91	85	94	88	82	86	81	76	60
ROOM INDEX	UF (total)									Direct
According to DIN EN 13032-2 2004			Suspended					SHRNOM = 1.25		

C Range: 0 - 360DEG
C Interval: 30.0DEG
Test Speed: HIGH
Temperature:25.3DEG
Operators:LPC
Test Date:2021-12-09

γ Range: 0 - 180DEG
 γ Interval: 1.0DEG
Test System:EVERFINE GO-2000B_V1 SYSTEM V2.0.362
Humidity:65.0%
Test Distance:9.200m [K=1.0000]
Remarks:

ISOCANDELA DIAGRAM

Test:U:24.00V I:0.3333A P:7.999W PF:1.000 Freq:50.00Hz Lamp Flux:237.784x1 lm		
NAME: SF21-24V-2835-120-3000+5700-80-5700	TYPE: 硅胶	WEIGHT:
SPEC.:	DIM.: 28mm*11.5mm	SERIAL No.:2021120905
MFR.: OLYMPIA	SUR.:1*0.016	Shielding Angle:

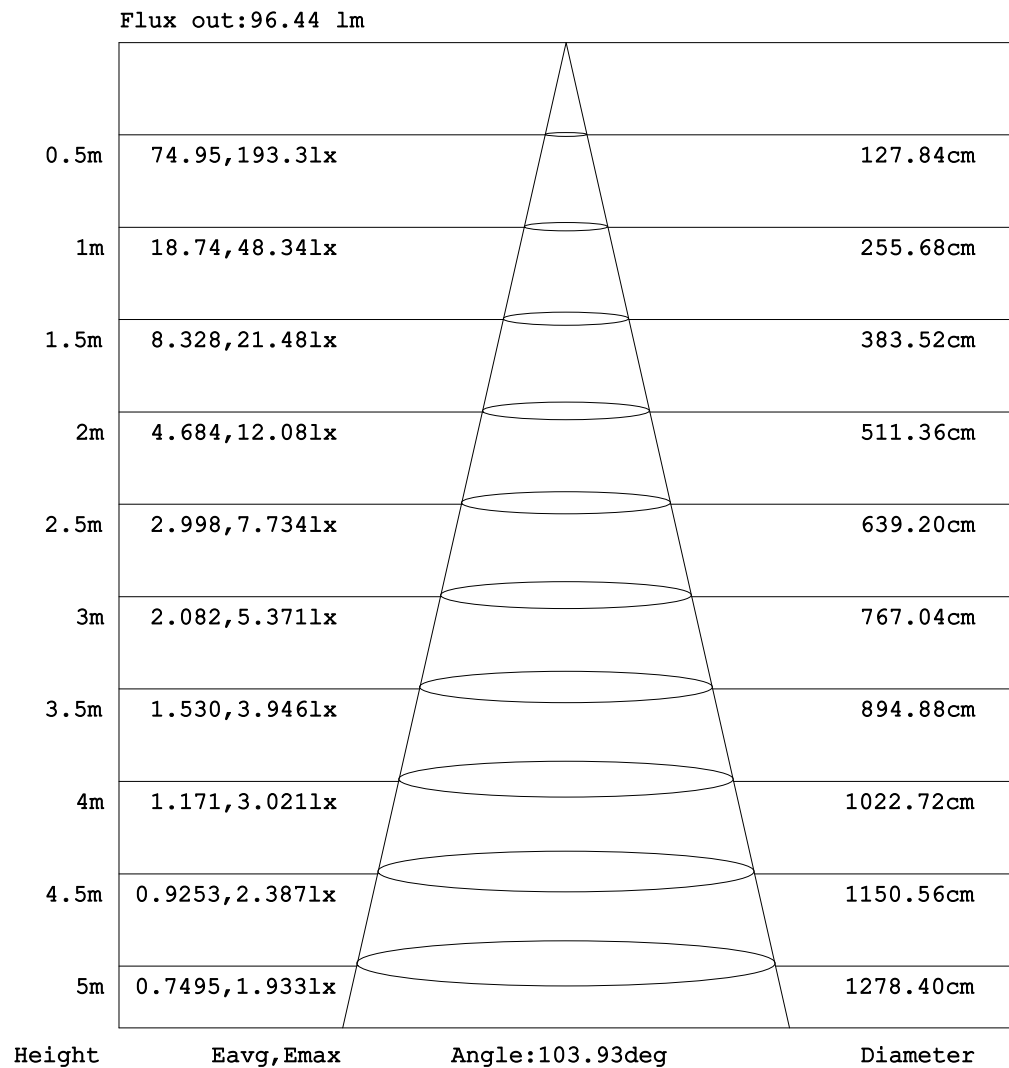


C Range: 0 - 360DEG
C Interval: 30.0DEG
Test Speed: HIGH
Temperature: 25.3DEG
Operators: LPC
Test Date: 2021-12-09

γ Range: 0 - 180DEG
 γ Interval: 1.0DEG
Test System: EVERFINE GO-2000B_V1 SYSTEM V2.0.362
Humidity: 65.0%
Test Distance: 9.200m [K=1.0000]
Remarks:

AAI Figure

Test:U:24.00V I:0.3333A P:7.999W PF:1.000 Freq:50.00Hz Lamp Flux:237.784x1 lm		
NAME: SF21-24V-2835-120-3000+5700-80-5700	TYPE: 硅胶	WEIGHT:
SPEC.:	DIM.: 28mm*11.5mm	SERIAL No.:2021120905
MFR.: OLYMPIA	SUR.:1*0.016	Shielding Angle:



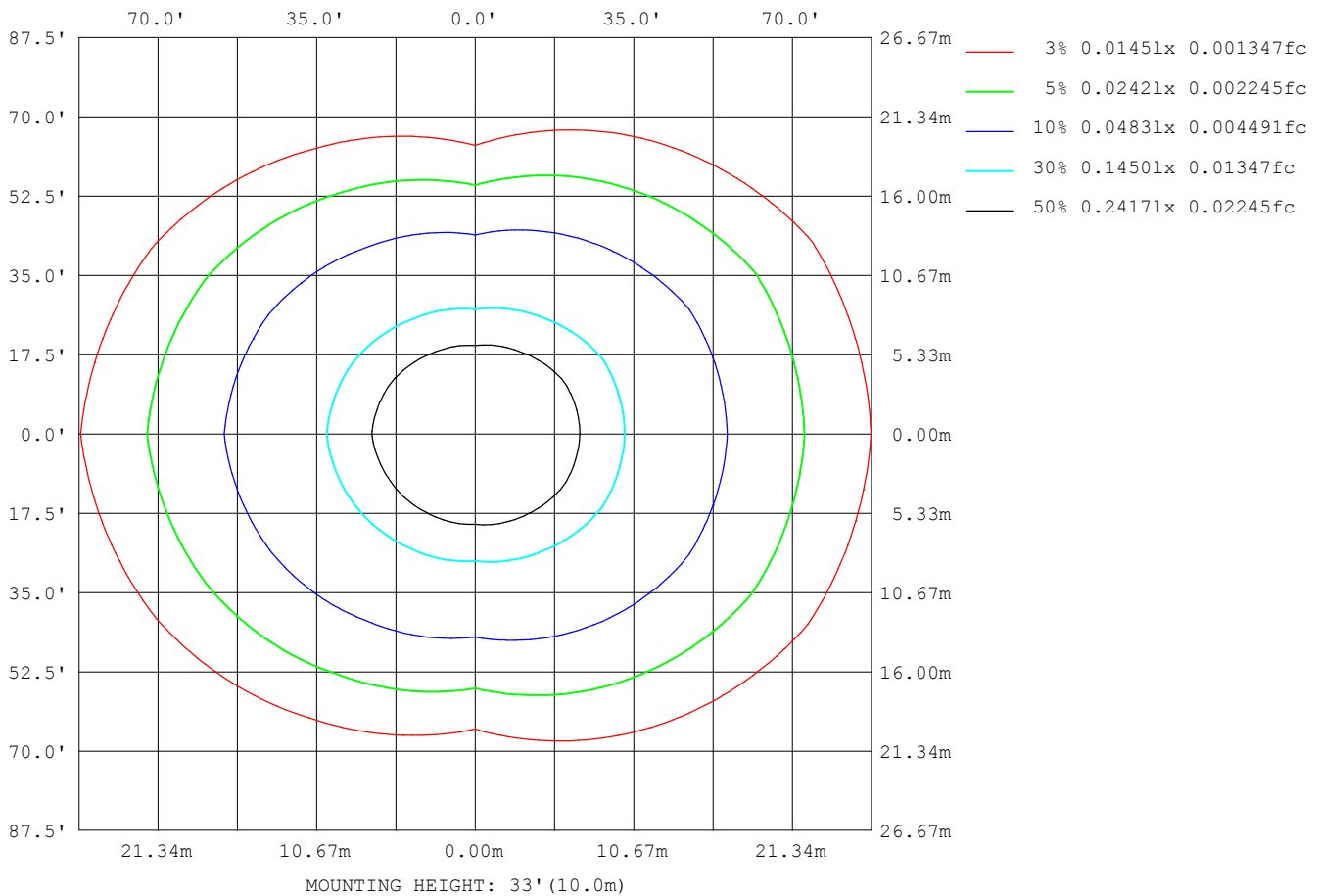
Note: The Curves indicate the illuminated area and the average illumination when the luminaire is at different distance.

C Range: 0 - 360DEG
 C Interval: 30.0DEG
 Test Speed: HIGH
 Temperature: 25.3DEG
 Operators: LPC
 Test Date: 2021-12-09

γ Range: 0 - 180DEG
 γ Interval: 1.0DEG
 Test System: EVERFINE GO-2000B_V1 SYSTEM V2.0.362
 Humidity: 65.0%
 Test Distance: 9.200m [K=1.0000]
 Remarks:

ISOLUX DIAGRAM

Test:U:24.00V I:0.3333A P:7.999W PF:1.000 Freq:50.00Hz Lamp Flux:237.784x1 lm		
NAME: SF21-24V-2835-120-3000+5700-80-5700	TYPE: 硅胶	WEIGHT:
SPEC.:	DIM.: 28mm*11.5mm	SERIAL No.:2021120905
MFR.: OLYMPIA	SUR.:1*0.016	Shielding Angle:



C Range: 0 - 360DEG
C Interval: 30.0DEG
Test Speed: HIGH
Temperature:25.3DEG
Operators:LPC
Test Date:2021-12-09

γ Range: 0 - 180DEG
 γ Interval: 1.0DEG
Test System:EVERFINE GO-2000B_V1 SYSTEM V2.0.362
Humidity:65.0%
Test Distance:9.200m [K=1.0000]
Remarks:

LED Avg.L Report

Test:U:24.00V I:0.3333A P:7.999W PF:1.000 Freq:50.00Hz Lamp Flux:237.784x1 lm		
NAME: SF21-24V-2835-120-3000+5700-80-5700	TYPE:硅胶	WEIGHT:
SPEC.:	DIM.: 28mm*11.5mm	SERIAL No.:2021120905
MFR.: OLYMPIA	SUR.:1*0.016	Shielding Angle:

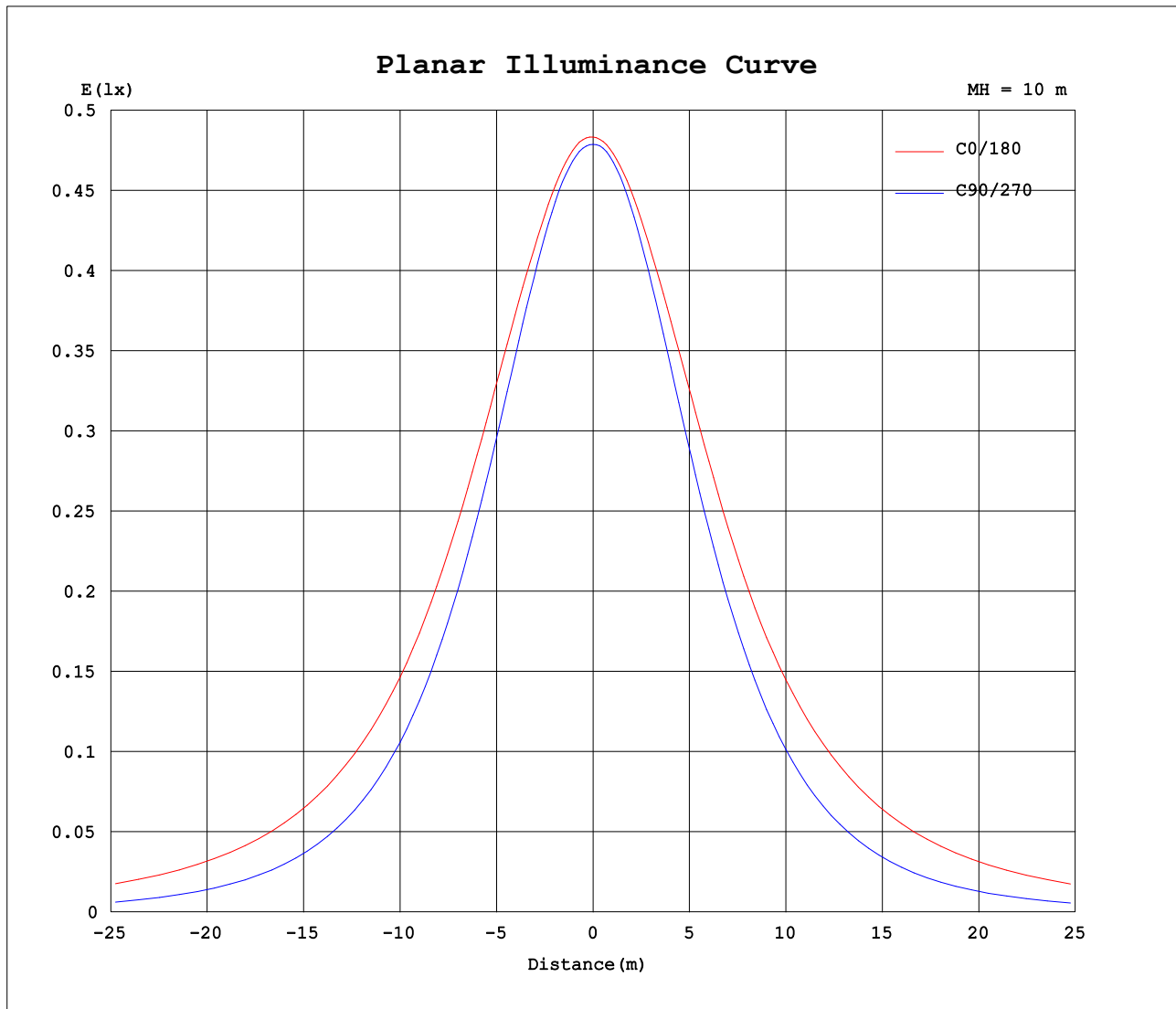
AvgL	cd/m2
L_0~180 (65) av	5150
L_0~180 (75) av	7549
L_0~180 (85) av	19701
L_90~270 (65) av	2059
L_90~270 (75) av	1518
L_90~270 (85) av	605
L_45 (65) av	3985
L_45 (75) av	5417
L_45 (85) av	13279

Standard: GB/T 29293-2012

C Range: 0 - 360DEG
C Interval: 30.0DEG
Test Speed: HIGH
Temperature:25.3DEG
Operators:LPC
Test Date:2021-12-09

γ Range: 0 - 180DEG
γ Interval: 1.0DEG
Test System:EVERFINE GO-2000B_V1 SYSTEM V2.0.362
Humidity:65.0%
Test Distance:9.200m [K=1.0000]
Remarks:

Planar Illuminance Curve



C Range: 0 - 360DEG
C Interval: 30.0DEG
Test Speed: HIGH
Temperature: 25.3DEG
Operators: LPC
Test Date: 2021-12-09

γ Range: 0 - 180DEG
 γ Interval: 1.0DEG
Test System: EVERFINE GO-2000B_V1 SYSTEM V2.0.362
Humidity: 65.0%
Test Distance: 9.200m [K=1.0000]
Remarks:

LUMINOUS DISTRIBUTION INTENSITY DATA

Test:U:24.00V I:0.3333A P:7.999W PF:1.000 Freq:50.00Hz Lamp Flux:237.784x1 lm		
NAME: SF21-24V-2835-120-3000+5700-80-5700	TYPE: 硅胶	WEIGHT:
SPEC.:	DIM.: 28mm*11.5mm	SERIAL No.:2021120905
MFR.: OLYMPIA	SUR.:1*0.016	Shielding Angle:

Table--1

UNIT: cd

C (DEG) γ (DEG)	0	30	60	90	120	150	180	210	240	270	300	330						
0	48.3	48.3	48.0	47.9	47.9	47.9	48.3	48.3	48.0	47.9	47.9	47.9						
5	48.3	48.3	48.0	47.7	47.6	47.5	48.1	47.9	47.6	47.7	47.9	48.1						
10	48.0	48.0	47.7	47.1	46.8	46.8	47.8	47.3	46.8	46.8	47.4	48.0						
15	47.5	47.5	46.8	45.9	45.6	46.0	47.2	46.5	45.5	45.4	46.4	47.6						
20	46.9	46.6	45.4	44.2	44.1	45.1	46.5	45.5	43.9	43.5	45.0	46.7						
25	46.3	45.6	43.7	42.1	42.4	43.8	45.8	44.4	42.0	41.2	43.1	45.7						
30	45.4	44.6	41.7	39.6	40.3	42.3	44.9	43.0	39.9	38.5	41.0	44.7						
35	44.3	43.2	39.4	36.6	38.0	40.5	43.7	41.4	37.7	35.5	38.8	43.6						
40	43.0	41.7	36.9	33.4	35.4	38.7	42.2	39.5	35.2	32.2	36.5	42.3						
45	41.5	40.0	34.5	30.0	32.6	37.0	41.0	37.8	32.5	28.7	34.2	40.7						
50	40.0	38.1	31.9	26.3	29.7	35.0	39.6	36.0	29.6	25.0	31.7	39.0						
55	38.4	36.2	29.2	22.5	26.8	33.0	38.1	34.0	26.7	21.1	29.0	37.1						
60	36.7	34.3	26.4	18.6	24.0	30.9	36.4	31.9	23.9	17.2	26.2	35.2						
65	35.0	32.2	23.5	14.6	21.1	28.9	34.7	29.9	21.0	13.3	23.4	33.2						
70	33.2	30.2	20.7	10.6	18.3	27.0	32.9	27.9	18.2	9.40	20.6	31.3						
75	31.4	28.3	18.1	6.78	15.8	25.1	31.2	26.0	15.7	5.79	18.0	29.3						
80	29.5	26.3	15.7	3.49	13.6	23.2	29.3	24.1	13.5	2.66	15.7	27.4						
85	27.5	24.4	13.8	1.06	11.8	21.2	27.4	22.3	11.7	0.62	13.6	25.5						
90	25.5	22.5	12.2	0.67	10.2	19.3	25.4	20.3	10.1	0.44	12.0	23.7						
95	23.4	20.6	10.9	0.70	8.77	17.3	23.4	18.5	8.91	0.45	10.7	21.9						
100	21.1	17.2	9.82	0.77	8.00	14.4	20.9	15.5	8.09	0.53	9.67	18.3						
105	19.2	16.2	8.29	0.79	5.99	13.6	19.0	14.6	6.27	0.61	8.17	17.3						
110	17.5	14.9	8.13	0.82	5.75	12.7	17.4	13.5	5.82	0.61	7.67	16.0						
115	15.9	13.8	7.52	0.85	5.23	11.0	15.4	12.2	5.21	0.62	6.68	14.7						
120	14.6	12.8	6.88	0.88	4.76	10.1	14.1	11.0	4.95	0.66	6.30	13.6						
125	13.4	11.9	6.11	0.91	4.55	9.29	12.7	9.98	4.66	0.70	5.83	12.3						
130	12.2	10.6	5.45	0.94	4.16	8.38	11.0	8.99	4.42	0.75	5.47	11.1						
135	11.0	8.74	4.94	0.97	4.09	7.27	9.38	7.98	4.10	0.78	4.85	9.14						
140	9.84	7.12	4.45	0.99	3.74	6.45	7.13	7.00	3.76	0.84	4.24	7.28						
145	8.70	6.04	4.03	1.02	3.39	5.59	7.01	6.13	3.45	0.87	3.78	6.38						
150	7.61	5.05	3.63	1.13	3.10	4.93	6.30	5.27	3.19	1.00	3.41	5.48						
155	6.56	4.22	3.59	1.13	2.59	4.31	5.81	4.60	2.79	1.03	3.42	4.64						
160	5.42	3.49	3.56	1.13	2.07	3.57	5.07	4.00	2.29	1.07	3.44	3.77						
165	4.42	2.92	3.47	1.13	1.50	2.79	4.32	3.39	1.86	1.08	3.35	3.22						
170	2.38	2.77	3.22	1.13	1.20	1.92	2.10	2.56	1.40	1.08	3.22	3.23						
175	1.87	2.40	2.96	1.14	1.18	1.26	1.82	1.75	1.23	1.09	3.03	2.99						
180	1.21	1.18	1.17	1.14	1.15	1.15	1.20	1.20	1.16	1.10	1.11	1.18						

C Range: 0 - 360DEG
C Interval: 30.0DEG
Test Speed: HIGH
Temperature:25.3DEG
Operators:LPC
Test Date:2021-12-09

γ Range: 0 - 180DEG
γ Interval: 1.0DEG
Test System:EVERFINE GO-2000B_V1 SYSTEM V2.0.362
Humidity:65.0%
Test Distance:9.200m [K=1.0000]
Remarks:

Photometric Data Table [cd]

G/C	0.0	30.0	60.0	90.0	120.0	150.0	180.0	210.0	240.0	270.0
0.0	48.34	48.25	48.00	47.87	47.93	47.93	48.34	48.25	48.00	47.87
3.0	48.36	48.27	48.04	47.83	47.78	47.71	48.25	48.08	47.82	47.83
6.0	48.29	48.23	48.01	47.62	47.46	47.40	48.09	47.83	47.49	47.54
9.0	48.10	48.09	47.78	47.26	47.00	46.98	47.83	47.46	47.02	47.06
12.0	47.83	47.84	47.34	46.62	46.38	46.52	47.53	47.00	46.34	46.32
15.0	47.49	47.48	46.75	45.89	45.63	46.02	47.16	46.48	45.52	45.40
18.0	47.15	47.01	46.01	44.93	44.74	45.46	46.75	45.92	44.56	44.33
21.0	46.84	46.41	45.12	43.80	43.76	44.85	46.36	45.31	43.50	43.06
24.0	46.46	45.81	44.08	42.57	42.71	44.07	45.94	44.63	42.39	41.67
27.0	45.99	45.21	42.92	41.08	41.55	43.19	45.46	43.88	41.19	40.15
30.0	45.44	44.55	41.65	39.56	40.30	42.26	44.87	43.02	39.95	38.49
33.0	44.80	43.78	40.29	37.82	38.93	41.19	44.17	42.08	38.62	36.73
36.0	44.09	42.94	38.87	36.01	37.51	40.08	43.38	41.03	37.21	34.86
39.0	43.27	42.05	37.42	34.13	35.96	39.05	42.52	39.91	35.72	32.86
42.0	42.40	41.08	35.95	32.10	34.33	38.04	41.71	38.80	34.14	30.80
45.0	41.48	40.03	34.47	29.95	32.65	36.98	40.98	37.78	32.48	28.69
48.0	40.63	38.92	32.93	27.84	30.91	35.84	40.18	36.72	30.78	26.48
51.0	39.73	37.73	31.35	25.58	29.14	34.66	39.32	35.58	29.02	24.22
54.0	38.77	36.58	29.72	23.28	27.40	33.42	38.39	34.43	27.25	21.95
57.0	37.76	35.45	28.05	20.94	25.70	32.18	37.41	33.19	25.56	19.61
60.0	36.73	34.27	26.35	18.55	23.96	30.95	36.36	31.94	23.86	17.20
63.0	35.68	33.03	24.64	16.15	22.21	29.73	35.35	30.73	22.13	14.88
66.0	34.62	31.83	22.93	13.75	20.50	28.55	34.32	29.51	20.44	12.51
69.0	33.54	30.60	21.25	11.36	18.80	27.36	33.26	28.31	18.75	10.18
72.0	32.47	29.41	19.68	9.014	17.21	26.21	32.23	27.18	17.14	7.938
75.0	31.37	28.26	18.12	6.785	15.75	25.06	31.16	26.02	15.66	5.786
78.0	30.24	27.10	16.66	4.699	14.41	23.92	30.07	24.88	14.31	3.795
81.0	29.11	25.93	15.31	2.910	13.20	22.77	28.96	23.76	13.09	2.140
84.0	27.92	24.81	14.13	1.474	12.11	21.61	27.80	22.64	11.99	0.7882
87.0	26.73	23.65	13.08	0.7134	11.10	20.44	26.64	21.45	10.98	0.5030
90.0	25.47	22.51	12.17	0.6684	10.15	19.31	25.40	20.33	10.09	0.4439
93.0	24.23	21.37	11.36	0.6886	9.220	18.12	24.21	19.24	9.335	0.4481
96.0	23.03	20.26	10.63	0.7087	8.596	16.98	22.92	18.18	8.722	0.4522
99.0	21.85	18.06	10.00	0.7440	8.133	14.58	21.43	15.78	8.231	0.5024
102.0	20.30	16.90	9.416	0.7793	7.597	14.15	20.10	15.19	7.822	0.6027
105.0	19.21	16.21	8.294	0.7943	5.993	13.64	19.04	14.59	6.267	0.6089
108.0	18.15	15.48	8.203	0.8093	5.785	13.09	18.06	13.95	6.099	0.6131
111.0	17.14	14.69	7.983	0.8243	5.680	12.16	17.14	13.11	5.698	0.6131
114.0	16.23	14.02	7.468	0.8394	5.319	11.24	15.82	12.48	5.306	0.6206
117.0	15.38	13.39	7.398	0.8595	5.047	10.54	14.84	11.72	5.075	0.6281
120.0	14.59	12.79	6.883	0.8795	4.760	10.09	14.06	11.04	4.949	0.6582
123.0	13.85	12.26	6.418	0.8996	4.496	9.603	13.26	10.39	4.744	0.6785
126.0	13.13	11.68	5.972	0.9148	4.499	9.125	12.38	9.772	4.623	0.7036
129.0	12.41	11.05	5.580	0.9299	4.278	8.562	11.37	9.169	4.472	0.7436
132.0	11.71	9.802	5.228	0.9549	4.116	7.989	10.34	8.631	4.286	0.7588
135.0	11.00	8.741	4.941	0.9701	4.086	7.273	9.380	7.978	4.095	0.7789
138.0	10.30	7.497	4.645	0.9900	3.906	6.584	8.071	7.288	3.914	0.8091
141.0	9.612	6.888	4.348	1.005	3.650	6.286	6.458	6.827	3.703	0.8393
144.0	8.933	6.196	4.117	1.015	3.433	5.818	7.120	6.268	3.507	0.8593
147.0	8.265	5.622	3.866	1.046	3.272	5.301	6.627	5.776	3.321	0.9194
150.0	7.606	5.054	3.634	1.126	3.096	4.934	6.301	5.268	3.190	0.9950
153.0	6.973	4.507	3.538	1.127	2.816	4.572	6.004	4.861	2.949	1.015
156.0	6.360	4.070	3.583	1.128	2.479	4.170	5.744	4.489	2.693	1.030
159.0	5.727	3.627	3.568	1.129	2.157	3.738	5.369	4.117	2.381	1.050
162.0	5.013	3.205	3.538	1.131	1.896	3.290	4.707	3.801	2.075	1.068
165.0	4.420	2.920	3.473	1.132	1.499	2.793	4.325	3.389	1.864	1.078
168.0	2.555	2.880	3.323	1.133	1.206	2.225	2.187	2.896	1.557	1.082
171.0	2.293	2.729	3.177	1.134	1.196	1.706	1.956	2.379	1.364	1.085
174.0	1.962	2.492	3.026	1.135	1.186	1.309	1.929	1.901	1.265	1.088
177.0	1.670	2.178	2.681	1.136	1.176	1.166	1.633	1.289	1.166	1.091
180.0	1.206	1.176	1.166	1.136	1.146	1.151	1.201	1.196	1.156	1.101
G/C	300.0	330.0								
0.0	47.93	47.93								
3.0	47.93	48.08								
6.0	47.83	48.08								
9.0	47.58	48.04								
12.0	47.06	47.93								
15.0	46.41	47.58								
18.0	45.56	47.10								
21.0	44.61	46.50								
24.0	43.49	45.94								
27.0	42.27	45.29								
30.0	40.99	44.75								

C Range: 0 - 360DEG
 C Interval: 30.0DEG
 Test Speed: HIGH
 Temperature: 25.3DEG
 Operators: LPC
 Test Date: 2021-12-09

γ Range: 0 - 180DEG
 γ Interval: 1.0DEG
 Test System: EVERFINE GO-2000B_V1 SYSTEM V2.0.362
 Humidity: 65.0%
 Test Distance: 9.200m [K=1.0000]
 Remarks:

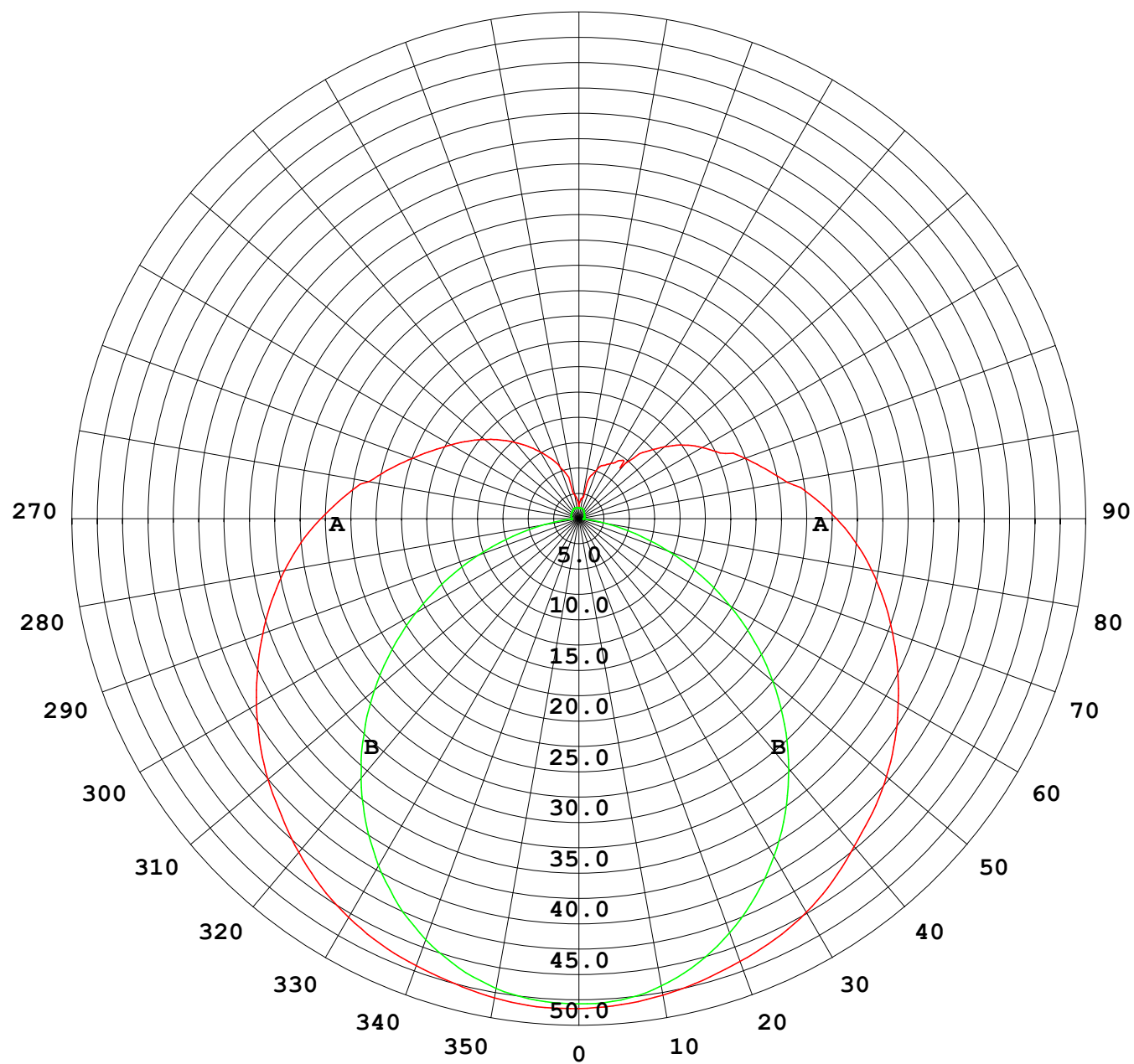
Photometric Data Table [cd]

33.0	39.70	44.10
36.0	38.36	43.35
39.0	37.00	42.55
42.0	35.59	41.66
45.0	34.20	40.72
48.0	32.73	39.70
51.0	31.17	38.59
54.0	29.56	37.47
57.0	27.92	36.30
60.0	26.23	35.17
63.0	24.54	34.04
66.0	22.85	32.84
69.0	21.17	31.66
72.0	19.57	30.46
75.0	18.04	29.31
78.0	16.58	28.16
81.0	15.22	27.05
84.0	14.01	25.92
87.0	12.95	24.78
90.0	12.02	23.67
93.0	11.22	22.58
96.0	10.48	21.47
99.0	9.859	19.37
102.0	9.299	17.90
105.0	8.166	17.26
108.0	7.969	16.50
111.0	7.607	15.70
114.0	7.246	14.93
117.0	6.657	14.26
120.0	6.301	13.58
123.0	6.050	12.79
126.0	5.739	12.14
129.0	5.567	11.46
132.0	5.236	10.09
135.0	4.848	9.139
138.0	4.451	8.084
141.0	4.155	7.282
144.0	3.864	6.621
147.0	3.638	6.022
150.0	3.407	5.484
153.0	3.398	4.987
156.0	3.433	4.459
159.0	3.467	3.927
162.0	3.418	3.469
165.0	3.347	3.222
168.0	3.272	3.267
171.0	3.171	3.182
174.0	3.080	3.026
177.0	2.891	2.900
180.0	1.111	1.176

C Range: 0 - 360DEG
C Interval: 30.0DEG
Test Speed: HIGH
Temperature:25.3DEG
Operators:LPC
Test Date:2021-12-09

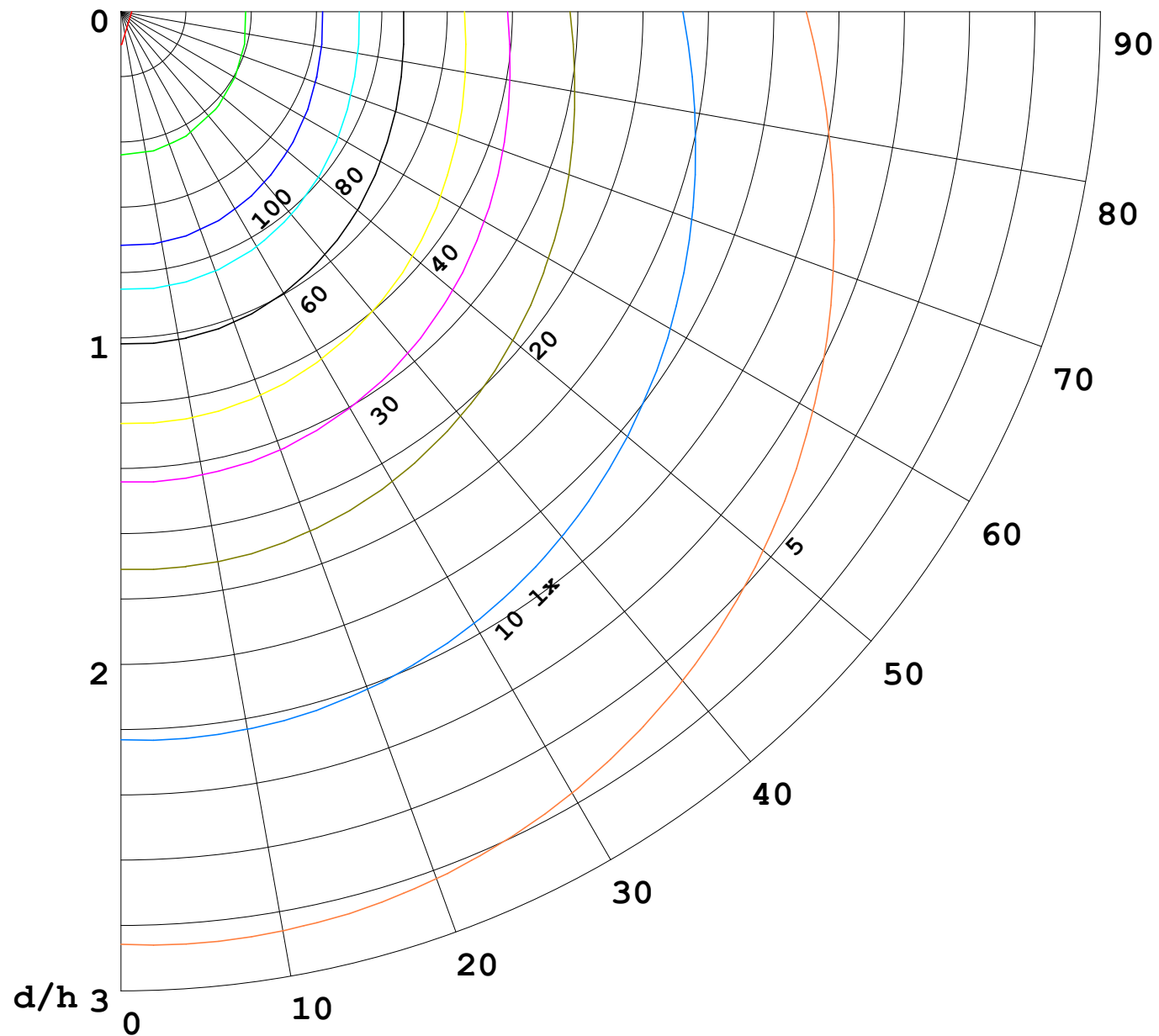
γ Range: 0 - 180DEG
γ Interval: 1.0DEG
Test System:EVERFINE GO-2000B_V1 SYSTEM V2.0.362
Humidity:65.0%
Test Distance:9.200m [K=1.0000]
Remarks:

I (cd)



1000 lm

$\kappa = 1$



F = 5000 lm
 K = 0.7
 Hcc = 0.0 m
 Hfc = 0.0 m
 Eave = 100 lx

	Pcc	Pw	Pfc
—	70	50	30
—	50	30	20

