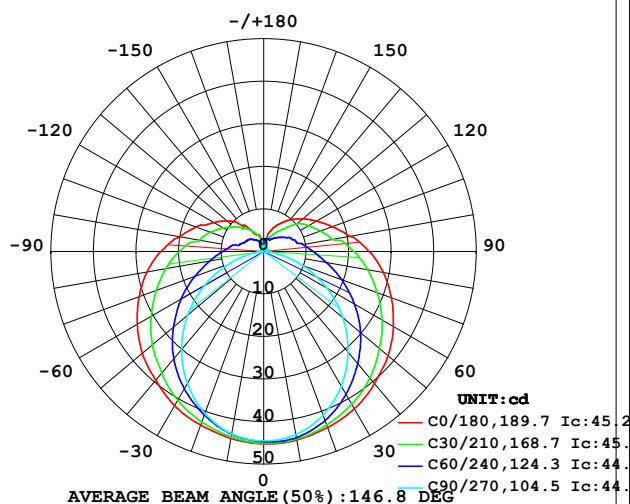


LUMINAIRE PHOTOMETRIC TEST REPORT

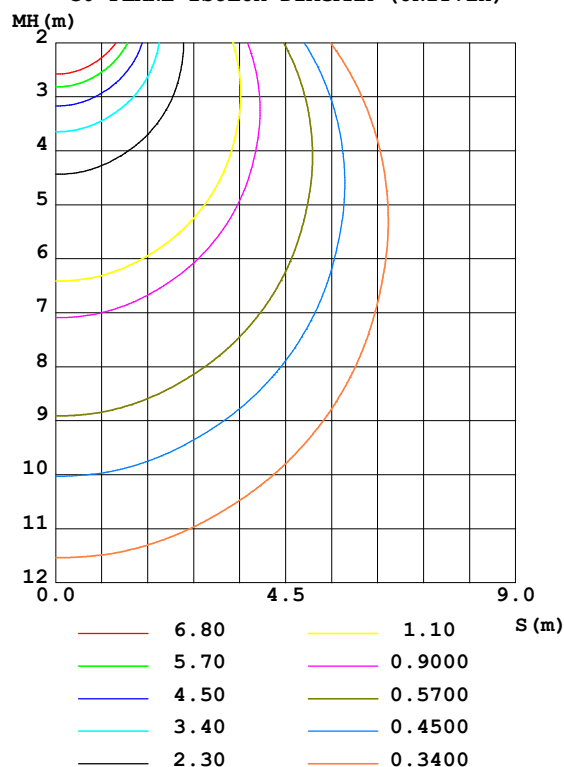
Test:U:24.00V I:0.3329A P:7.990W PF:1.000 Freq:50.00Hz Lamp Flux:225.09lx1 lm		
NAME: SF21-24V-2835-120-2700+5700-90-5700	TYPE: 硅胶	WEIGHT:
SPEC.:	DIM.: 28mm*11.5mm	SERIAL No.:2021120902
MFR.: OLYMPIA	SUR.:1*0.016	Shielding Angle:

DATA OF LAMP		PHOTOMETRIC DATA Eff: 28.17 lm/W			
MODEL	2835	I _{max} (cd)	45.26	S/MH (C0/180)	1.39
NOMINAL POWER (W)	7.5	LOR (%)	100.0	S/MH (C90/270)	1.21
RATED VOLTAGE (V)	24	TOTAL FLUX (lm)	225.09	η UP, DN (C0-180)	11.2, 38.4
NOMINAL FLUX (lm)	225.091	CIE CLASS	SEMI-D.	η UP, DN (C180-360)	11.7, 38.8
LAMPS INSIDE	1	η up (%)	22.9	CIBSE SHR NOM	1.50
TEST VOLTAGE (V)	24	η down (%)	77.1	CIBSE SHR MAX	1.55

LUMINOUS INTENSITY DISTRIBUTION DIAGRAM



C0 PLANE ISOLUX DIAGRAM (UNIT: lx)



C Range: 0 - 360DEG
C Interval: 30.0DEG
Test Speed: HIGH
Temperature: 25.3DEG
Operators: LPC
Test Date: 2021-12-09

γ Range: 0 - 180DEG
γ Interval: 1.0DEG
Test System: EVERFINE GO-2000B_V1 SYSTEM V2.0.362
Humidity: 65.0%
Test Distance: 9.200m [K=1.0000]
Remarks:

ZONAL FLUX DIAGRAM

ZONAL FLUX DIAGRAM:

γ	C0	C45	C90	C135	C180	C225	C270	C315	γ	Φ zone	Φ total	%lum, lamp
10	45.02	44.63	43.70	43.29	44.61	43.96	43.53	44.34	0- 10	4.241	4.241	1.88,1.88
20	44.01	42.84	40.94	41.12	43.43	41.79	40.51	42.75	10- 20	12.22	16.46	7.31,7.31
30	42.69	40.11	36.55	37.99	41.89	38.88	35.90	40.07	20- 30	18.83	35.29	15.7,15.7
40	40.58	36.62	30.87	34.18	39.47	35.11	30.07	36.96	30- 40	23.48	58.78	26.1,26.1
50	38.15	32.62	24.28	29.86	37.24	30.93	23.37	33.30	40- 50	25.90	84.68	37.6,37.6
60	35.20	28.39	17.08	25.39	34.30	26.50	16.14	29.17	50- 60	26.08	110.8	49.2,49.2
70	31.96	23.96	9.754	20.95	31.18	22.07	8.821	24.91	60- 70	24.24	135.0	60,60
80	28.55	19.86	3.232	17.06	27.84	18.12	2.558	20.90	70- 80	21.07	156.1	69.3,69.3
90	24.81	16.45	0.6384	13.73	24.14	14.75	0.4597	17.49	80- 90	17.55	173.6	77.1,77.1
100	20.59	12.88	0.7341	10.74	20.05	11.54	0.5324	13.71	90-100	14.48	188.1	83.6,83.6
110	17.15	11.03	0.7757	8.773	16.91	9.489	0.5952	11.71	100-110	11.27	199.4	88.6,88.6
120	14.34	9.376	0.8243	7.074	13.60	7.941	0.6313	9.848	110-120	8.853	208.2	92.5,92.5
130	11.99	7.630	0.8946	5.862	11.20	6.770	0.6926	8.236	120-130	6.736	215.0	95.5,95.5
140	9.723	5.485	0.9600	4.668	7.987	5.506	0.7739	5.732	130-140	4.659	219.6	97.6,97.6
150	7.546	4.005	1.131	3.503	5.484	4.345	0.9998	4.501	140-150	2.906	222.5	98.9,98.9
160	5.401	3.213	1.173	2.327	4.126	3.111	1.201	3.670	150-160	1.630	224.2	99.6,99.6
170	2.343	2.782	1.181	1.299	1.924	1.957	1.357	3.317	160-170	0.7533	224.9	99.9,99.9
180	1.131	1.118	1.136	1.400	1.131	1.103	1.447	1.405	170-180	0.1857	225.1	100,100
DEG	LUMINOUS INTENSITY:cd									UNIT:lm		

Conical surface Flux(90deg): 71.566 lm

%lum = 31.8%

%lamp = 31.8%

Conical surface Flux(120deg): 110.76 lm

%lum = 49.2%

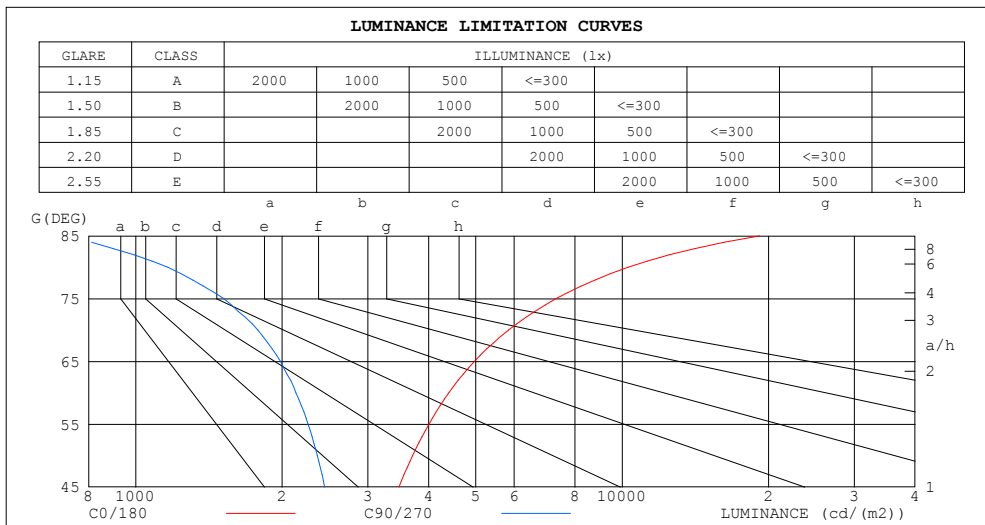
%lamp = 49.2%

C Range: 0 - 360DEG
 C Interval: 30.0DEG
 Test Speed: HIGH
 Temperature:25.3DEG
 Operators:LPC
 Test Date:2021-12-09

γ Range: 0 - 180DEG
 γ Interval: 1.0DEG
 Test System:EVERFINE GO-2000B_V1 SYSTEM V2.0.362
 Humidity:65.0%
 Test Distance:9.200m [K=1.0000]
 Remarks:

LUMINANCE LIMITATION CURVES

Test:U:24.00V I:0.3329A P:7.990W PF:1.000 Freq:50.00Hz Lamp Flux:225.09lx1 lm		
NAME: SF21-24V-2835-120-2700+5700-90-5700	TYPE: 硅胶	WEIGHT:
SPEC.:	DIM.: 28mm*11.5mm	SERIAL No.:2021120902
MFR.: OLYMPIA	SUR.:1*0.016	Shielding Angle:



LUMINANCE cd/(m2)		
G (DEG)	C0/180	C90/270
85	19176	701
80	10278	1163
75	7314	1517
70	5841	1782
65	4967	1984
60	4400	2134
55	4006	2260
50	3710	2361
45	3475	2445

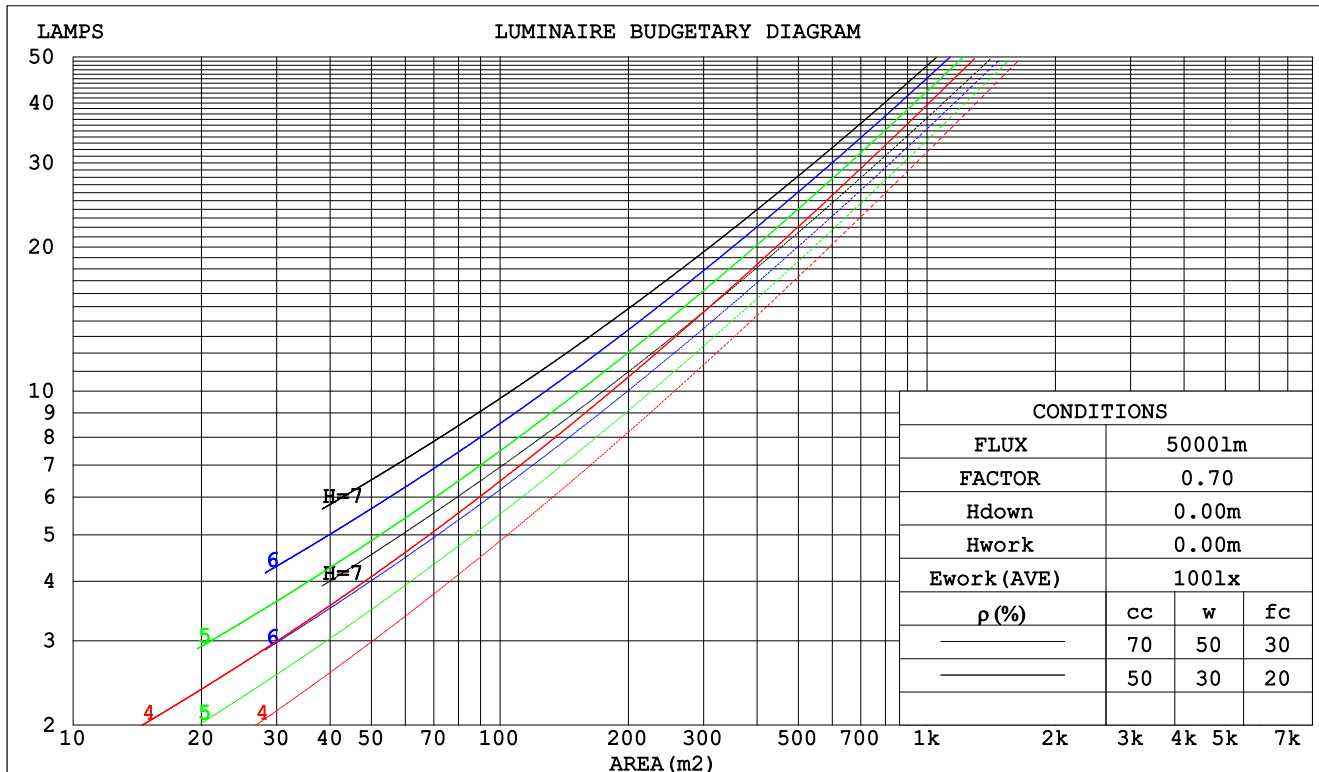
C Range: 0 - 360DEG
C Interval: 30.0DEG
Test Speed: HIGH
Temperature:25.3DEG
Operators:LPC
Test Date:2021-12-09

γ Range: 0 - 180DEG
 γ Interval: 1.0DEG
Test System:EVERFINE GO-2000B_V1 SYSTEM V2.0.362
Humidity:65.0%
Test Distance:9.200m [K=1.0000]
Remarks:

CU AND LUMINAIRE BUDGETARY ESTIMATE DIAGRAM

Test:U:24.00V I:0.3329A P:7.990W PF:1.000 Freq:50.00Hz Lamp Flux:225.091x1 lm		
NAME: SF21-24V-2835-120-2700+5700-90-5700	TYPE: 硅胶	WEIGHT:
SPEC.:	DIM.: 28mm*11.5mm	SERIAL No.:2021120902
MFR.: OLYMPIA	SUR.:1*0.016	Shielding Angle:

pcc	80%			70%			50%			30%			10%			0
pw	50%	30%	10%	50%	30%	10%	50%	30%	10%	50%	30%	10%	50%	30%	10%	0
pfc	20%			20%			20%			20%			20%			0
RCR	RCR:Room Cavity Ratio						Coefficients of Utilization(CU)									
0.0	1.14	1.14	1.14	1.08	1.08	1.08	.98	.98	.98	.89	.89	.89	.81	.81	.81	.77
1.0	.94	.89	.84	.90	.85	.81	.81	.77	.74	.73	.70	.67	.66	.64	.61	.58
2.0	.81	.73	.66	.77	.70	.63	.69	.64	.59	.63	.58	.54	.56	.53	.49	.46
3.0	.70	.61	.54	.66	.58	.52	.60	.53	.48	.54	.49	.44	.49	.44	.41	.37
4.0	.61	.52	.45	.58	.50	.43	.53	.46	.40	.48	.42	.37	.43	.38	.34	.31
5.0	.54	.45	.38	.52	.43	.37	.47	.40	.34	.43	.36	.32	.39	.33	.29	.26
6.0	.49	.39	.33	.46	.38	.32	.42	.35	.29	.38	.32	.27	.35	.30	.25	.23
7.0	.44	.35	.28	.42	.34	.28	.38	.31	.26	.35	.29	.24	.32	.26	.22	.20
8.0	.40	.31	.25	.38	.30	.24	.35	.28	.23	.32	.26	.21	.29	.24	.20	.18
9.0	.36	.28	.22	.35	.27	.22	.32	.25	.20	.29	.23	.19	.27	.22	.18	.16
10.0	.33	.25	.20	.32	.25	.20	.29	.23	.18	.27	.21	.17	.25	.20	.16	.14



C Range: 0 - 360DEG
 C Interval: 30.0DEG
 Test Speed: HIGH
 Temperature:25.3DEG
 Operators:LPC
 Test Date:2021-12-09

γ Range: 0 - 180DEG
 γ Interval: 1.0DEG
 Test System:EVERFINE GO-2000B_V1 SYSTEM V2.0.362
 Humidity:65.0%
 Test Distance:9.200m [K=1.0000]
 Remarks:

WEC AND CCEC

Test:U:24.00V I:0.3329A P:7.990W PF:1.000 Freq:50.00Hz Lamp Flux:225.091x1 lm		
NAME: SF21-24V-2835-120-2700+5700-90-5700	TYPE: 硅胶	WEIGHT:
SPEC.:	DIM.: 28mm*11.5mm	SERIAL No.:2021120902
MFR.: OLYMPIA	SUR.:1*0.016	Shielding Angle:

pcc	80%			70%			50%			30%			10%			0	
pw	50%	30%	10%	50%	30%	10%	50%	30%	10%	50%	30%	10%	50%	30%	10%	0	
pfc	20%			20%			20%			20%			20%			0	
RCR	RCR:Room Cavity Ratio						Wall Exitance Coeffcients(WEC)										
0.0																	
1.0	.388	.221	.070	.374	.213	.068	.347	.199	.064	.323	.186	.060	.300	.174	.056		
2.0	.334	.183	.056	.321	.177	.054	.297	.165	.051	.275	.154	.048	.254	.144	.045		
3.0	.296	.157	.047	.284	.152	.046	.262	.142	.043	.242	.133	.041	.223	.124	.038		
4.0	.266	.138	.041	.255	.134	.039	.235	.125	.037	.217	.116	.035	.200	.108	.033		
5.0	.241	.123	.036	.232	.119	.035	.214	.111	.033	.197	.104	.031	.181	.097	.029		
6.0	.221	.111	.032	.212	.107	.031	.196	.100	.029	.180	.094	.028	.166	.087	.026		
7.0	.204	.101	.029	.196	.097	.028	.180	.091	.026	.166	.085	.025	.153	.079	.023		
8.0	.189	.092	.026	.181	.089	.025	.167	.084	.024	.154	.078	.023	.142	.073	.021		
9.0	.176	.085	.024	.169	.082	.023	.156	.077	.022	.144	.072	.021	.133	.067	.019		
10.0	.165	.079	.022	.158	.076	.021	.146	.072	.020	.135	.067	.019	.124	.063	.018		

pcc	80%			70%			50%			30%			10%			0
pw	50%	30%	10%	50%	30%	10%	50%	30%	10%	50%	30%	10%	50%	30%	10%	0
pfc	20%			20%			20%			20%			20%			0
RCR	RCR:Room Cavity Ratio						Ceiling Cavity Exitance Coefficients(CCEC)									
0.0	.365	.365	.365	.312	.312	.312	.213	.213	.213	.122	.122	.122	.039	.039	.039	
1.0	.361	.331	.304	.309	.284	.262	.212	.196	.181	.122	.113	.105	.039	.036	.034	
2.0	.355	.309	.270	.304	.266	.233	.208	.184	.163	.120	.107	.095	.039	.035	.031	
3.0	.347	.292	.248	.298	.252	.215	.204	.175	.151	.118	.102	.089	.038	.033	.029	
4.0	.339	.280	.234	.291	.242	.204	.200	.169	.143	.116	.099	.085	.037	.032	.028	
5.0	.332	.270	.225	.285	.234	.196	.196	.163	.138	.114	.096	.082	.037	.031	.027	
6.0	.324	.262	.218	.279	.227	.190	.192	.159	.134	.112	.094	.080	.036	.031	.026	
7.0	.317	.256	.213	.273	.222	.185	.189	.155	.131	.110	.092	.078	.035	.030	.026	
8.0	.311	.250	.209	.268	.217	.182	.185	.152	.129	.108	.090	.077	.035	.029	.025	
9.0	.305	.246	.206	.262	.213	.180	.182	.150	.127	.106	.088	.076	.034	.029	.025	
10.0	.299	.242	.203	.258	.210	.178	.179	.148	.126	.104	.087	.075	.034	.029	.025	

C Range: 0 - 360DEG
 C Interval: 30.0DEG
 Test Speed: HIGH
 Temperature:25.3DEG
 Operators:LPC
 Test Date:2021-12-09

γ Range: 0 - 180DEG
 γ Interval: 1.0DEG
 Test System:EVERFINE GO-2000B_V1 SYSTEM V2.0.362
 Humidity:65.0%
 Test Distance:9.200m [K=1.0000]
 Remarks:

UGR(Unified Glare Rating) Table

Test:U:24.00V I:0.3329A P:7.990W PF:1.000 Freq:50.00Hz Lamp Flux:225.091x1 lm										
NAME: SF21-24V-2835-120-2700+5700-90-5700					TYPE: 硅胶			WEIGHT:		
SPEC.:					DIM.: 28mm*11.5mm			SERIAL No.:2021120902		
MFR.: OLYMPIA					SUR.:1*0.016			Shielding Angle:		
ceiling/cavity	0.7	0.7	0.5	0.5	0.3	0.7	0.7	0.5	0.5	0.3
walls	0.5	0.3	0.5	0.3	0.3	0.5	0.3	0.5	0.3	0.3
working plane	0.2	0.2	0.2	0.2	0.2	0.2	0.2	0.2	0.2	0.2
Room dimensions	Viewed crosswise					Viewed endwise				
x = 2H y = 2H	22.0	23.3	22.6	23.9	24.6	19.4	20.7	20.0	21.3	22.0
3H	24.8	26.0	25.4	26.6	27.3	20.9	22.1	21.5	22.7	23.4
4H	26.4	27.6	27.0	28.2	28.9	21.4	22.6	22.0	23.2	23.9
6H	28.2	29.2	28.8	29.9	30.6	21.8	22.9	22.4	23.5	24.2
8H	29.1	30.2	29.8	30.8	31.6	21.9	22.9	22.5	23.6	24.3
12H	30.3	31.3	30.9	31.9	32.7	21.9	22.9	22.6	23.6	24.3
4H 2H	22.6	23.7	23.2	24.3	25.1	20.7	21.9	21.4	22.5	23.2
3H	25.6	26.6	26.3	27.3	28.1	22.5	23.5	23.2	24.2	25.0
4H	27.4	28.3	28.1	29.0	29.8	23.3	24.3	24.0	25.0	25.8
6H	29.4	30.2	30.1	30.9	31.7	24.0	24.8	24.7	25.5	26.3
8H	30.5	31.3	31.2	32.0	32.8	24.2	25.0	24.9	25.7	26.5
12H	31.7	32.5	32.5	33.2	34.1	24.3	25.0	25.0	25.8	26.6
8H 4H	27.8	28.5	28.5	29.3	30.1	24.6	25.4	25.3	26.1	27.0
6H	30.0	30.7	30.8	31.4	32.3	25.7	26.4	26.5	27.1	28.0
8H	31.4	32.0	32.1	32.7	33.6	26.2	26.8	27.0	27.6	28.5
12H	32.9	33.4	33.7	34.2	35.1	26.6	27.1	27.4	27.9	28.8
12H 4H	27.8	28.5	28.5	29.2	30.1	25.1	25.8	25.8	26.5	27.4
6H	30.2	30.8	30.9	31.5	32.4	26.4	27.0	27.2	27.8	28.7
8H	31.6	32.1	32.4	32.9	33.8	27.1	27.6	27.9	28.4	29.4
Variations with the observer position at spacings:										
S = 1.0H	+ 0.1 / - 0.1					+ 0.1 / - 0.1				
1.5H	+ 0.2 / - 0.3					+ 0.2 / - 0.3				
2.0H	+ 0.2 / - 0.3					+ 0.3 / - 0.4				

CIE Pub.117, 225.1 lm Total Lamp Luminous Flux Correct (8log(F/F0) = -5.2)

C Range: 0 - 360DEG
C Interval: 30.0DEG
Test Speed: HIGH
Temperature:25.3DEG
Operators:LPC
Test Date:2021-12-09

γ Range: 0 - 180DEG
γ Interval: 1.0DEG
Test System:EVERFINE GO-2000B_V1 SYSTEM V2.0.362
Humidity:65.0%
Test Distance:9.200m [K=1.0000]
Remarks:

UTILIZATION FACTORS TABLE

Test:U:24.00V I:0.3329A P:7.990W PF:1.000 Freq:50.00Hz Lamp Flux:225.091x1 lm		
NAME: SF21-24V-2835-120-2700+5700-90-5700	TYPE: 硅胶	WEIGHT:
SPEC.:	DIM.: 28mm*11.5mm	SERIAL No.:2021120902
MFR.: OLYMPIA	SUR.:1*0.016	Shielding Angle:

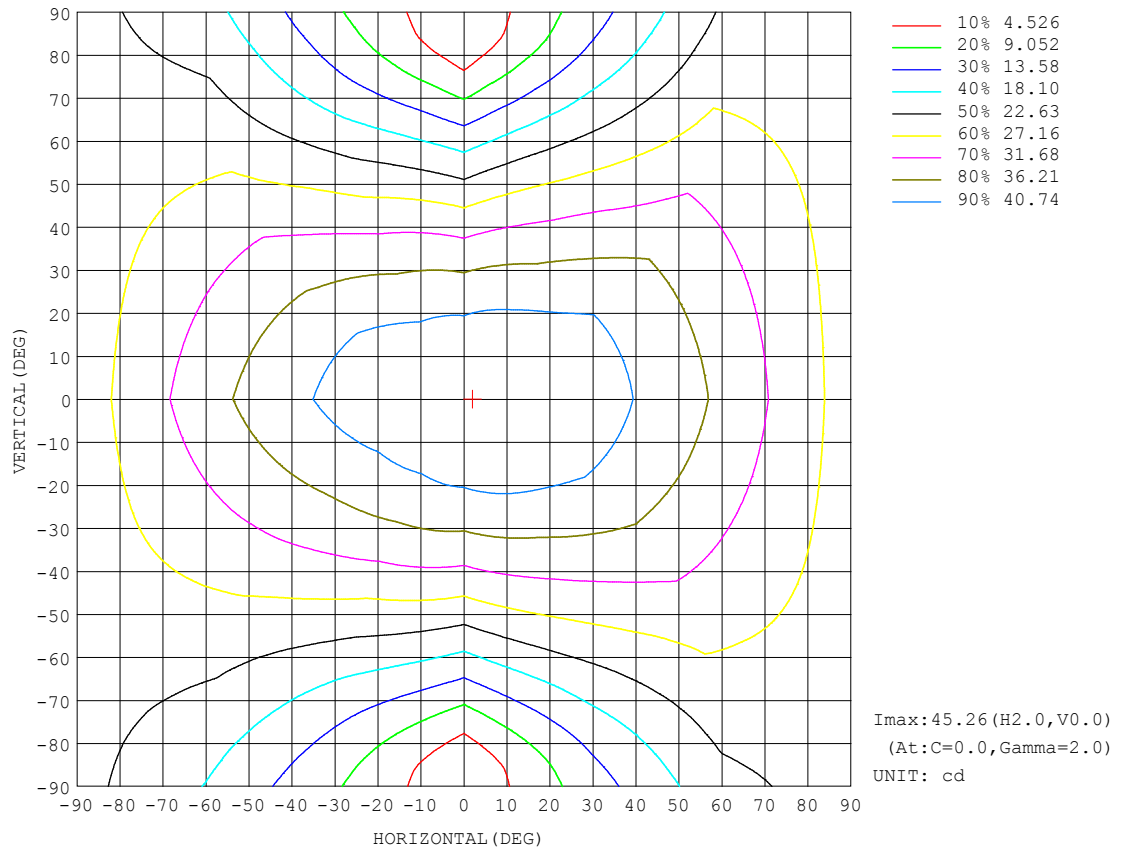
REFLECTANCE										
Ceiling	0.8	0.8	0.8	0.7	0.7	0.7	0.5	0.5	0.5	0
Walls	0.7	0.5	0.3	0.7	0.5	0.3	0.7	0.5	0.3	0
Working plane	0.2	0.2	0.2	0.2	0.2	0.2	0.2	0.2	0.2	0
ROOM INDEX	UTILIZATION FACTORS (PERCENT) $k(RI) \times RCR = 5$									
$k = 0.60$	46	34	26	45	33	26	43	32	26	19
0.80	55	42	34	53	41	34	50	40	33	24
1.00	63	50	41	61	49	41	57	49	39	30
1.25	70	57	48	67	55	47	62	52	45	35
1.50	75	62	54	72	61	52	66	57	50	39
2.00	82	71	62	79	68	61	72	64	57	45
2.50	87	76	68	83	73	66	76	68	62	48
3.00	90	81	73	86	78	71	79	72	66	52
4.00	95	87	80	91	84	77	83	77	72	56
5.00	98	91	85	94	87	82	85	80	76	59
ROOM INDEX	UF (total)									Direct
According to DIN EN 13032-2 2004			Suspended					SHRNOM = 1.25		

C Range: 0 - 360DEG
C Interval: 30.0DEG
Test Speed: HIGH
Temperature:25.3DEG
Operators:LPC
Test Date:2021-12-09

γ Range: 0 - 180DEG
 γ Interval: 1.0DEG
Test System:EVERFINE GO-2000B_V1 SYSTEM V2.0.362
Humidity:65.0%
Test Distance:9.200m [K=1.0000]
Remarks:

ISOCANDELA DIAGRAM

Test:U:24.00V I:0.3329A P:7.990W PF:1.000 Freq:50.00Hz Lamp Flux:225.09lx1 lm		
NAME: SF21-24V-2835-120-2700+5700-90-5700	TYPE: 硅胶	WEIGHT:
SPEC.:	DIM.: 28mm*11.5mm	SERIAL No.:2021120902
MFR.: OLYMPIA	SUR.:1*0.016	Shielding Angle:

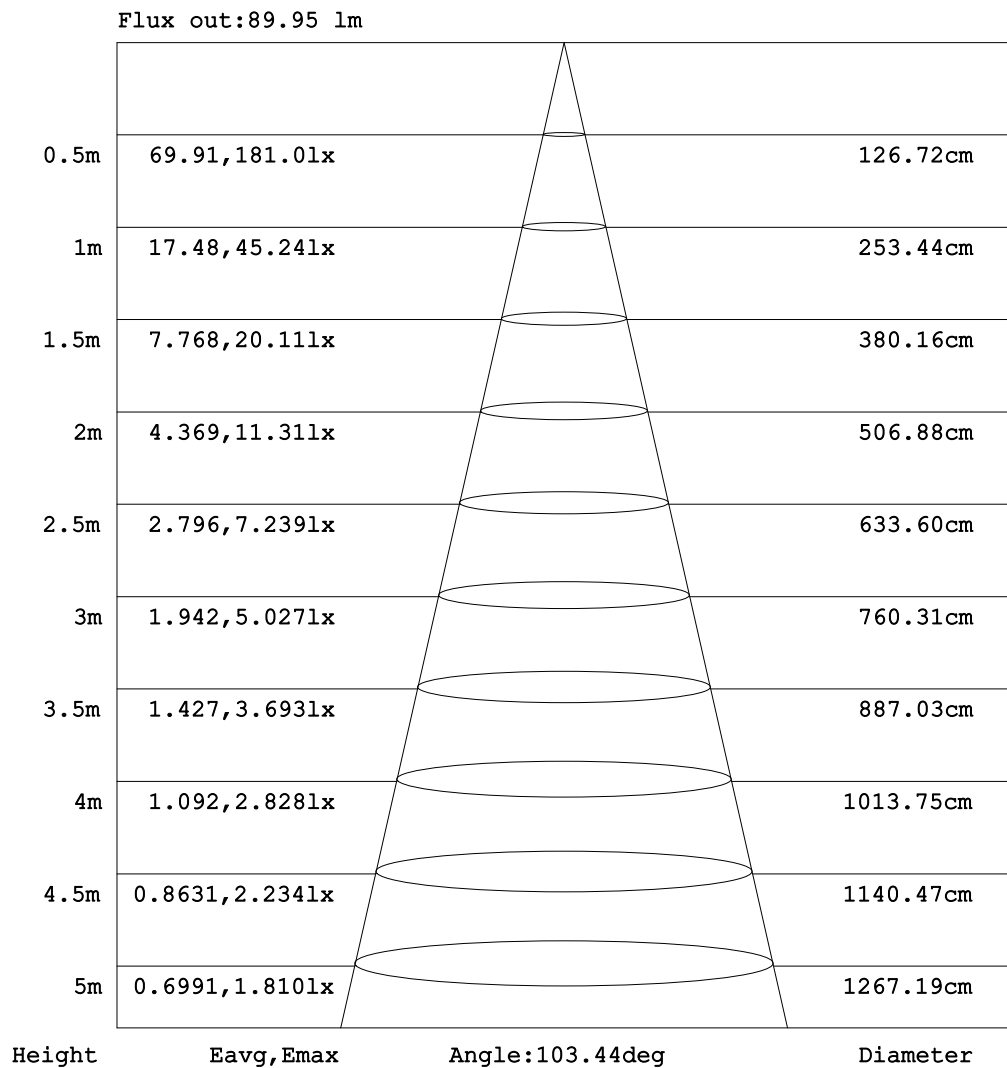


C Range: 0 - 360DEG
C Interval: 30.0DEG
Test Speed: HIGH
Temperature: 25.3DEG
Operators: LPC
Test Date: 2021-12-09

γ Range: 0 - 180DEG
 γ Interval: 1.0DEG
Test System: EVERFINE GO-2000B_V1 SYSTEM V2.0.362
Humidity: 65.0%
Test Distance: 9.200m [K=1.0000]
Remarks:

AAI Figure

Test:U:24.00V I:0.3329A P:7.990W PF:1.000 Freq:50.00Hz Lamp Flux:225.09lx1 lm		
NAME: SF21-24V-2835-120-2700+5700-90-5700	TYPE: 硅胶	WEIGHT:
SPEC.:	DIM.: 28mm*11.5mm	SERIAL No.:2021120902
MFR.: OLYMPIA	SUR.:1*0.016	Shielding Angle:



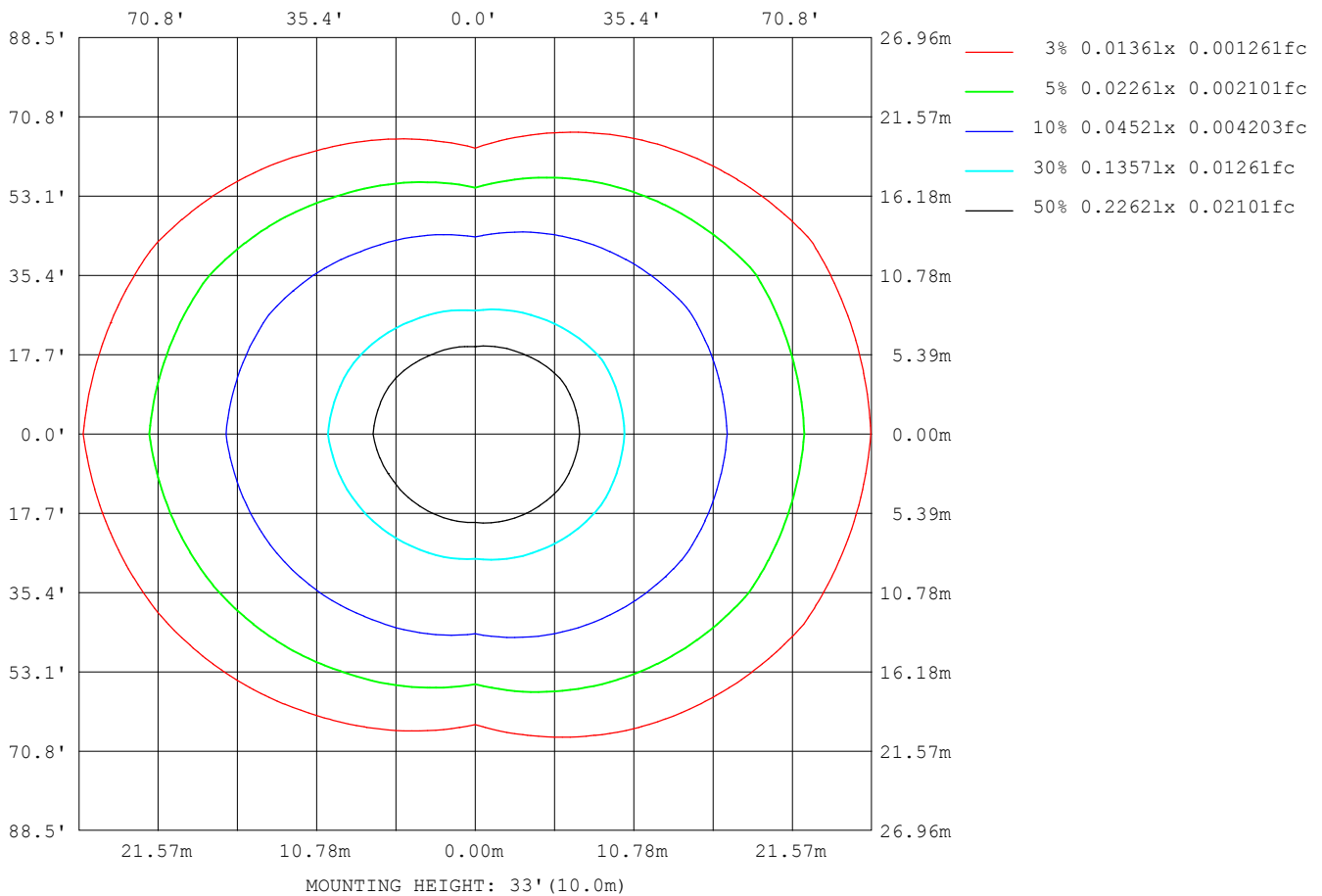
Note: The Curves indicate the illuminated area and the average illumination when the luminaire is at different distance.

C Range: 0 - 360DEG
 C Interval: 30.0DEG
 Test Speed: HIGH
 Temperature: 25.3DEG
 Operators: LPC
 Test Date: 2021-12-09

γ Range: 0 - 180DEG
 γ Interval: 1.0DEG
 Test System: EVERFINE GO-2000B_V1 SYSTEM V2.0.362
 Humidity: 65.0%
 Test Distance: 9.200m [K=1.0000]
 Remarks:

ISOLUX DIAGRAM

Test:U:24.00V I:0.3329A P:7.990W PF:1.000 Freq:50.00Hz Lamp Flux:225.09lx1 lm		
NAME: SF21-24V-2835-120-2700+5700-90-5700	TYPE: 硅胶	WEIGHT:
SPEC.:	DIM.: 28mm*11.5mm	SERIAL No.:2021120902
MFR.: OLYMPIA	SUR.:1*0.016	Shielding Angle:



C Range: 0 - 360DEG
C Interval: 30.0DEG
Test Speed: HIGH
Temperature:25.3DEG
Operators:LPC
Test Date:2021-12-09

γ Range: 0 - 180DEG
 γ Interval: 1.0DEG
Test System:EVERFINE GO-2000B_V1 SYSTEM V2.0.362
Humidity:65.0%
Test Distance:9.200m [K=1.0000]
Remarks:

LED Avg.L Report

Test:U:24.00V I:0.3329A P:7.990W PF:1.000 Freq:50.00Hz Lamp Flux:225.091x1 lm		
NAME: SF21-24V-2835-120-2700+5700-90-5700	TYPE:硅胶	WEIGHT:
SPEC.:	DIM.: 28mm*11.5mm	SERIAL No.:2021120902
MFR.: OLYMPIA	SUR.:1*0.016	Shielding Angle:

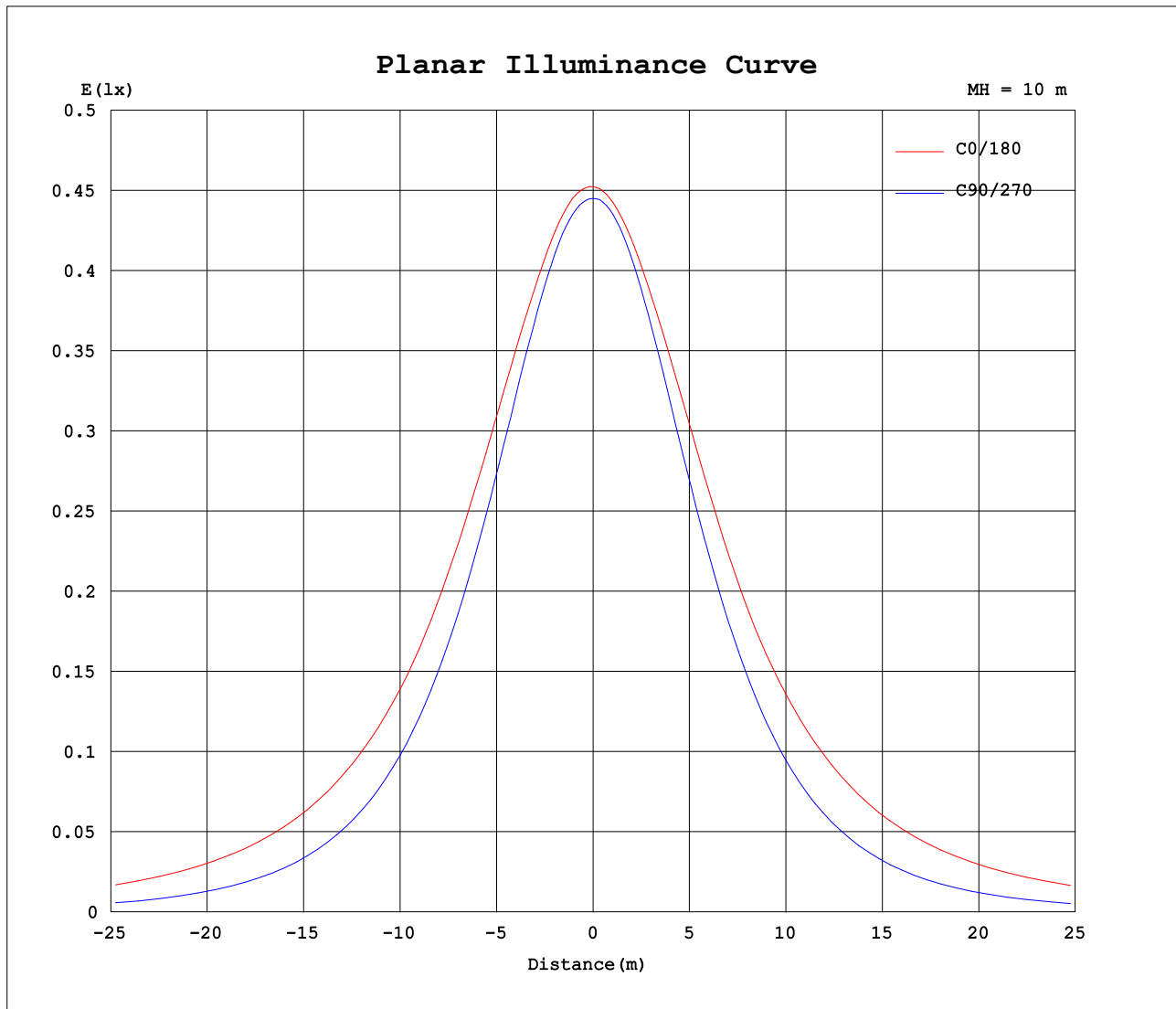
AvgL	cd/m2
L_0~180 (65) av	4906
L_0~180 (75) av	7225
L_0~180 (85) av	18930
L_90~270 (65) av	1912
L_90~270 (75) av	1415
L_90~270 (85) av	569
L_45 (65) av	3758
L_45 (75) av	5141
L_45 (85) av	12669

Standard: GB/T 29293-2012

C Range: 0 - 360DEG
C Interval: 30.0DEG
Test Speed: HIGH
Temperature:25.3DEG
Operators:LPC
Test Date:2021-12-09

γ Range: 0 - 180DEG
γ Interval: 1.0DEG
Test System:EVERFINE GO-2000B_V1 SYSTEM V2.0.362
Humidity:65.0%
Test Distance:9.200m [K=1.0000]
Remarks:

Planar Illuminance Curve



C Range: 0 - 360DEG
C Interval: 30.0DEG
Test Speed: HIGH
Temperature: 25.3DEG
Operators: LPC
Test Date: 2021-12-09

γ Range: 0 - 180DEG
 γ Interval: 1.0DEG
Test System: EVERFINE GO-2000B_V1 SYSTEM V2.0.362
Humidity: 65.0%
Test Distance: 9.200m [K=1.0000]
Remarks:

LUMINOUS DISTRIBUTION INTENSITY DATA

Test:U:24.00V I:0.3329A P:7.990W PF:1.000 Freq:50.00Hz Lamp Flux:225.091x1 lm		
NAME: SF21-24V-2835-120-2700+5700-90-5700	TYPE: 硅胶	WEIGHT:
SPEC.:	DIM.: 28mm*11.5mm	SERIAL No.:2021120902
MFR.: OLYMPIA	SUR.:1*0.016	Shielding Angle:

Table--1

UNIT: cd

C (DEG) γ (DEG)	0	30	60	90	120	150	180	210	240	270	300	330						
0	45.2	45.1	44.7	44.5	44.5	44.4	45.2	45.1	44.7	44.5	44.5	44.4						
5	45.3	45.1	44.8	44.3	44.1	43.9	45.0	44.8	44.4	44.3	44.4	44.6						
10	45.0	44.8	44.4	43.7	43.3	43.2	44.6	44.3	43.6	43.5	44.1	44.6						
15	44.5	44.3	43.5	42.5	42.1	42.5	44.0	43.5	42.4	42.3	43.2	44.3						
20	44.0	43.4	42.3	40.9	40.7	41.6	43.4	42.7	40.9	40.5	41.9	43.6						
25	43.4	42.5	40.7	38.9	39.0	40.3	42.8	41.6	39.2	38.3	40.2	42.7						
30	42.7	41.5	38.7	36.5	37.1	38.8	41.9	40.4	37.3	35.9	38.3	41.8						
35	41.7	40.2	36.6	33.8	35.0	37.2	40.8	39.0	35.2	33.1	36.3	40.8						
40	40.6	38.8	34.4	30.9	32.6	35.8	39.5	37.3	32.9	30.1	34.2	39.7						
45	39.3	37.2	32.1	27.7	30.0	34.2	38.5	35.7	30.4	26.8	32.0	38.4						
50	38.2	35.5	29.7	24.3	27.3	32.4	37.2	34.2	27.7	23.4	29.7	36.8						
55	36.8	33.9	27.2	20.7	24.8	30.5	35.9	32.4	25.0	19.8	27.3	35.1						
60	35.2	32.1	24.6	17.1	22.1	28.6	34.3	30.6	22.4	16.1	24.8	33.6						
65	33.6	30.3	22.0	13.4	19.5	26.8	32.8	28.7	19.8	12.4	22.2	31.9						
70	32.0	28.4	19.5	9.75	16.9	25.0	31.2	26.9	17.2	8.82	19.7	30.1						
75	30.3	26.6	17.2	6.28	14.6	23.2	29.6	25.1	14.9	5.43	17.4	28.3						
80	28.6	24.8	14.9	3.23	12.6	21.5	27.8	23.4	12.8	2.56	15.2	26.6						
85	26.7	23.0	13.1	0.98	11.0	19.6	26.1	21.7	11.1	0.61	13.3	24.9						
90	24.8	21.3	11.7	0.64	9.54	17.9	24.1	19.8	9.66	0.46	11.8	23.2						
95	22.9	19.5	10.4	0.67	8.48	16.4	22.3	18.2	8.55	0.48	10.6	21.5						
100	20.6	16.3	9.47	0.73	7.73	13.7	20.1	15.3	7.77	0.53	9.34	18.1						
105	18.8	15.4	8.04	0.75	5.78	13.0	18.4	14.4	5.96	0.59	7.89	17.1						
110	17.1	14.2	7.87	0.78	5.49	12.1	16.9	13.4	5.56	0.60	7.70	15.7						
115	15.7	13.1	7.27	0.80	5.01	10.4	14.9	12.1	5.05	0.61	6.86	14.3						
120	14.3	12.2	6.59	0.82	4.63	9.52	13.6	11.0	4.87	0.63	6.35	13.4						
125	13.1	11.3	5.82	0.86	4.38	8.70	12.4	9.99	4.69	0.66	5.83	12.4						
130	12.0	10.1	5.19	0.89	3.88	7.84	11.2	9.09	4.45	0.69	5.44	11.0						
135	10.8	8.35	4.69	0.93	3.63	6.80	9.97	8.21	4.08	0.74	4.86	9.14						
140	9.72	6.78	4.19	0.96	3.30	6.04	7.99	7.33	3.68	0.77	4.28	7.18						
145	8.61	5.73	3.76	1.01	2.96	5.14	7.34	6.46	3.32	0.83	3.86	6.44						
150	7.55	4.77	3.24	1.13	2.63	4.38	5.48	5.61	3.08	1.00	3.44	5.56						
155	6.53	3.98	3.13	1.16	2.13	3.68	4.47	4.76	2.60	1.11	3.59	4.70						
160	5.40	3.28	3.15	1.17	1.64	3.01	4.13	4.07	2.16	1.20	3.52	3.82						
165	4.44	2.72	3.14	1.18	1.12	2.22	3.88	3.28	1.78	1.31	3.45	3.30						
170	2.34	2.60	2.97	1.18	1.11	1.49	1.92	2.58	1.33	1.36	3.35	3.28						
175	1.83	2.16	2.81	1.18	1.10	1.21	1.66	1.81	1.16	1.41	3.17	3.13						
180	1.13	1.12	1.12	1.14	1.45	1.35	1.13	1.12	1.09	1.45	1.45	1.36						

C Range: 0 - 360DEG
C Interval: 30.0DEG
Test Speed: HIGH
Temperature:25.3DEG
Operators:LPC
Test Date:2021-12-09

γ Range: 0 - 180DEG
γ Interval: 1.0DEG
Test System:EVERFINE GO-2000B_V1 SYSTEM V2.0.362
Humidity:65.0%
Test Distance:9.200m [K=1.0000]
Remarks:

Photometric Data Table [cd]

G/C	0.0	30.0	60.0	90.0	120.0	150.0	180.0	210.0	240.0	270.0
0.0	45.24	45.11	44.74	44.50	44.47	44.39	45.24	45.11	44.74	44.50
3.0	45.26	45.11	44.80	44.45	44.27	44.12	45.14	44.98	44.56	44.45
6.0	45.25	45.05	44.77	44.25	43.96	43.79	44.96	44.74	44.24	44.20
9.0	45.09	44.88	44.55	43.89	43.51	43.38	44.70	44.42	43.81	43.75
12.0	44.84	44.62	44.11	43.26	42.88	42.94	44.39	44.01	43.17	43.08
15.0	44.53	44.25	43.55	42.55	42.15	42.52	44.04	43.53	42.43	42.25
18.0	44.21	43.76	42.82	41.60	41.33	41.96	43.66	43.02	41.53	41.25
21.0	43.91	43.18	41.99	40.56	40.36	41.32	43.31	42.46	40.58	40.10
24.0	43.56	42.65	41.02	39.33	39.37	40.58	42.92	41.85	39.56	38.80
27.0	43.14	42.09	39.94	37.97	38.28	39.74	42.45	41.19	38.45	37.42
30.0	42.69	41.48	38.75	36.55	37.13	38.84	41.89	40.44	37.32	35.90
33.0	42.14	40.76	37.49	34.94	35.85	37.83	41.24	39.60	36.10	34.25
36.0	41.53	39.99	36.20	33.24	34.50	36.92	40.50	38.67	34.78	32.53
39.0	40.83	39.15	34.85	31.48	33.07	36.08	39.71	37.65	33.38	30.69
42.0	40.06	38.22	33.49	29.62	31.57	35.15	39.08	36.62	31.92	28.78
45.0	39.32	37.24	32.12	27.66	30.00	34.15	38.45	35.73	30.37	26.81
48.0	38.66	36.19	30.71	25.69	28.39	33.11	37.74	34.82	28.79	24.76
51.0	37.89	35.18	29.25	23.60	26.85	32.03	36.97	33.82	27.16	22.67
54.0	37.06	34.24	27.74	21.47	25.31	30.88	36.14	32.79	25.55	20.56
57.0	36.16	33.21	26.21	19.30	23.74	29.76	35.25	31.71	24.02	18.37
60.0	35.20	32.14	24.64	17.08	22.14	28.63	34.30	30.56	22.45	16.14
63.0	34.23	31.05	23.06	14.86	20.54	27.52	33.39	29.44	20.87	14.01
66.0	33.26	29.86	21.49	12.68	18.96	26.44	32.44	28.34	19.30	11.74
69.0	32.28	28.77	19.98	10.47	17.39	25.38	31.49	27.25	17.74	9.560
72.0	31.30	27.65	18.57	8.321	15.96	24.30	30.52	26.19	16.24	7.490
75.0	30.29	26.59	17.15	6.282	14.62	23.22	29.55	25.14	14.86	5.434
78.0	29.26	25.52	15.79	4.358	13.40	22.19	28.54	24.09	13.61	3.648
81.0	28.20	24.44	14.54	2.704	12.29	21.11	27.50	23.05	12.46	2.039
84.0	27.11	23.39	13.44	1.358	11.28	20.00	26.43	22.02	11.45	0.8229
87.0	25.99	22.33	12.48	0.6782	10.35	18.97	25.30	20.91	10.50	0.4879
90.0	24.81	21.25	11.66	0.6384	9.542	17.91	24.14	19.84	9.657	0.4597
93.0	23.65	20.16	10.90	0.6634	8.868	17.00	23.02	18.83	8.953	0.4553
96.0	22.50	19.15	10.22	0.6735	8.310	16.08	21.92	17.86	8.371	0.4883
99.0	21.37	17.16	9.641	0.7088	7.862	14.06	20.58	15.49	7.904	0.5214
102.0	19.88	15.99	9.099	0.7424	7.330	13.50	19.40	15.01	7.505	0.5928
105.0	18.83	15.37	8.038	0.7549	5.783	12.99	18.42	14.44	5.955	0.5928
108.0	17.81	14.64	7.941	0.7674	5.559	12.44	17.49	13.85	5.823	0.5929
111.0	16.85	13.94	7.686	0.7799	5.419	11.62	16.61	13.04	5.457	0.5975
114.0	15.94	13.31	7.227	0.7991	5.082	10.68	15.32	12.41	5.115	0.6042
117.0	15.11	12.72	7.151	0.8191	4.876	9.995	14.38	11.68	4.955	0.6143
120.0	14.34	12.16	6.592	0.8243	4.630	9.517	13.60	11.01	4.874	0.6313
123.0	13.61	11.66	6.132	0.8493	4.248	9.025	12.88	10.37	4.714	0.6482
126.0	12.92	11.12	5.676	0.8645	4.313	8.522	12.17	9.787	4.633	0.6692
129.0	12.22	10.44	5.309	0.8896	3.998	8.009	11.45	9.234	4.527	0.6868
132.0	11.53	9.330	4.972	0.9046	3.755	7.507	10.69	8.766	4.306	0.7036
135.0	10.85	8.354	4.690	0.9298	3.634	6.796	9.973	8.208	4.080	0.7387
138.0	10.17	7.155	4.378	0.9399	3.433	6.316	8.885	7.500	3.844	0.7690
141.0	9.501	6.561	4.097	0.9700	3.217	5.858	7.290	7.133	3.608	0.7839
144.0	8.838	5.879	3.851	0.9902	3.016	5.336	7.616	6.620	3.397	0.8090
147.0	8.184	5.346	3.574	1.031	2.825	4.808	6.544	6.128	3.181	0.8592
150.0	7.546	4.773	3.238	1.131	2.629	4.376	5.484	5.610	3.079	0.9998
153.0	6.923	4.265	3.111	1.146	2.348	3.959	4.662	5.113	2.768	1.080
156.0	6.335	3.833	3.126	1.166	2.022	3.537	4.376	4.620	2.507	1.121
159.0	5.707	3.406	3.144	1.172	1.745	3.145	4.151	4.203	2.231	1.181
162.0	5.008	2.999	3.151	1.174	1.364	2.757	4.051	3.841	1.999	1.241
165.0	4.440	2.724	3.139	1.177	1.120	2.220	3.879	3.283	1.783	1.306
168.0	2.530	2.693	3.101	1.179	1.115	1.757	2.095	2.826	1.506	1.337
171.0	2.267	2.543	2.940	1.181	1.110	1.430	1.848	2.414	1.296	1.357
174.0	1.932	2.256	2.835	1.184	1.106	1.266	1.668	1.932	1.194	1.412
177.0	1.644	1.707	2.266	1.186	1.101	1.101	1.507	1.539	1.091	1.412
180.0	1.131	1.121	1.116	1.136	1.452	1.347	1.131	1.116	1.091	1.447
G/C	300.0	330.0								
0.0	44.47	44.39								
3.0	44.47	44.58								
6.0	44.41	44.66								
9.0	44.20	44.63								
12.0	43.75	44.59								
15.0	43.19	44.31								
18.0	42.46	43.93								
21.0	41.60	43.42								
24.0	40.61	42.94								
27.0	39.50	42.34								
30.0	38.33	41.81								

C Range: 0 - 360DEG
 C Interval: 30.0DEG
 Test Speed: HIGH
 Temperature: 25.3DEG
 Operators: LPC
 Test Date: 2021-12-09

γ Range: 0 - 180DEG
 γ Interval: 1.0DEG
 Test System: EVERFINE GO-2000B_V1 SYSTEM V2.0.362
 Humidity: 65.0%
 Test Distance: 9.200m [K=1.0000]
 Remarks:

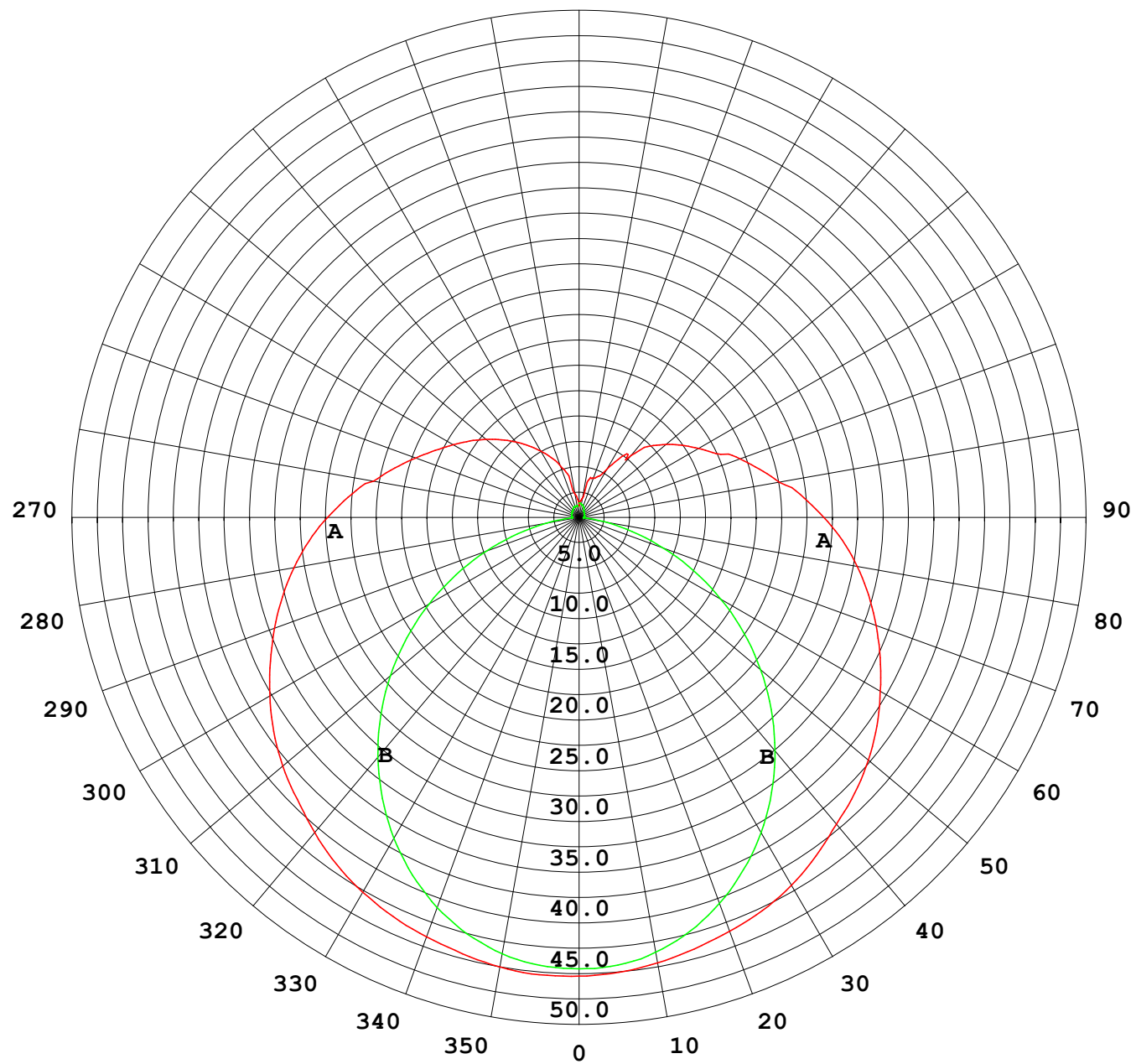
Photometric Data Table [cd]

33.0	37.15	41.26
36.0	35.90	40.63
39.0	34.63	39.94
42.0	33.33	39.18
45.0	32.02	38.36
48.0	30.68	37.47
51.0	29.27	36.52
54.0	27.80	35.49
57.0	26.32	34.48
60.0	24.78	33.55
63.0	23.24	32.59
66.0	21.70	31.57
69.0	20.16	30.48
72.0	18.75	29.41
75.0	17.36	28.33
78.0	16.04	27.29
81.0	14.76	26.29
84.0	13.64	25.24
87.0	12.66	24.20
90.0	11.81	23.17
93.0	11.07	22.18
96.0	10.38	21.19
99.0	9.572	18.96
102.0	8.967	17.83
105.0	7.891	17.15
108.0	7.949	16.38
111.0	7.657	15.41
114.0	7.392	14.56
117.0	6.832	13.91
120.0	6.346	13.35
123.0	5.980	12.74
126.0	5.718	12.15
129.0	5.527	11.44
132.0	5.211	10.22
135.0	4.858	9.140
138.0	4.482	8.004
141.0	4.130	7.172
144.0	3.939	6.661
147.0	3.733	6.078
150.0	3.438	5.565
153.0	3.489	5.078
156.0	3.588	4.525
159.0	3.573	4.017
162.0	3.523	3.529
165.0	3.448	3.297
168.0	3.417	3.292
171.0	3.327	3.277
174.0	3.191	3.187
177.0	2.870	3.041
180.0	1.447	1.362

C Range: 0 - 360DEG
 C Interval: 30.0DEG
 Test Speed: HIGH
 Temperature: 25.3DEG
 Operators: LPC
 Test Date: 2021-12-09

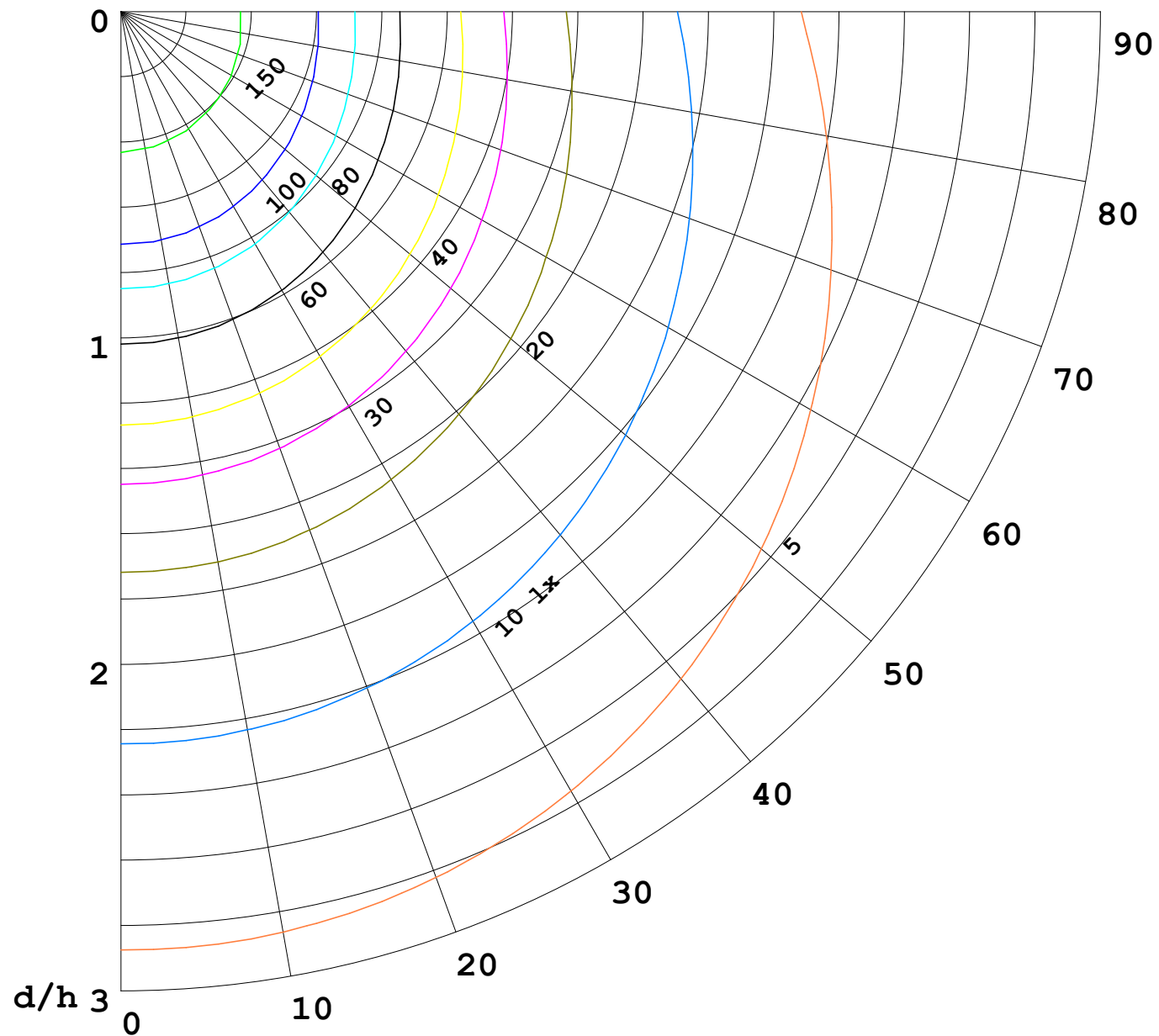
γ Range: 0 - 180DEG
 γ Interval: 1.0DEG
 Test System: EVERFINE GO-2000B_V1 SYSTEM V2.0.362
 Humidity: 65.0%
 Test Distance: 9.200m [K=1.0000]
 Remarks:

I (cd)



1000 lm

$\kappa = 1$



F = 5000 lm
 K = 0.7
 Hcc = 0.0 m
 Hfc = 0.0 m
 Eave = 100 lx

	Pcc	Pw	Pfc
—	70	50	30
—	50	30	20

