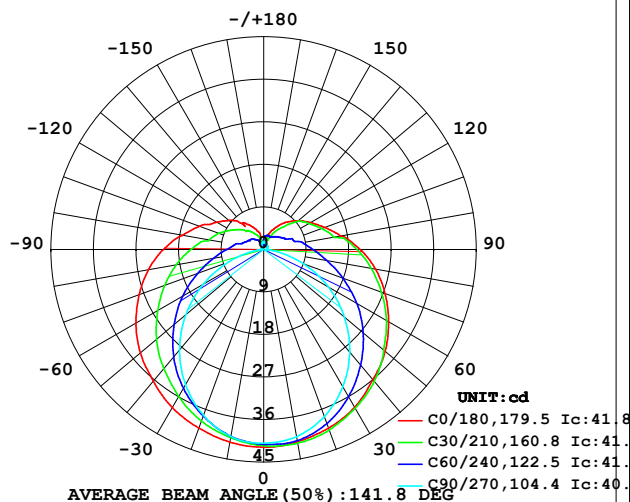


## LUMINAIRE PHOTOMETRIC TEST REPORT

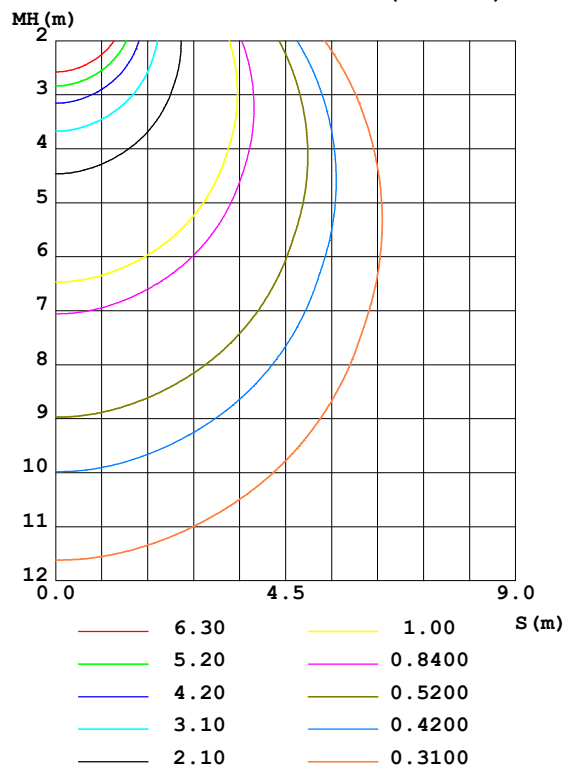
Test:U:24.00V I:0.3274A P:7.858W PF:1.000 Freq:50.00Hz Lamp Flux:199.783x1 lm		
NAME: SF21-24V-2835-120-2200+5700-80-2200	TYPE: 硅胶	WEIGHT:
SPEC.:	DIM.: 28mm*11.5mm	SERIAL No.:2021120806
MFR.: OLYMPIA	SUR.:1*0.016	Shielding Angle:

DATA OF LAMP		PHOTOMETRIC DATA Eff: 25.43 lm/W			
MODEL	2835	I <sub>max</sub> (cd)	41.83	S/MH (C0/180)	1.39
NOMINAL POWER (W)	7.5	LOR (%)	100.0	S/MH (C90/270)	1.21
RATED VOLTAGE (V)	24	TOTAL FLUX (lm)	199.78	η UP, DN (C0-180)	10.5, 38.8
NOMINAL FLUX (lm)	199.783	CIE CLASS	SEMI-D.	η UP, DN (C180-360)	11.2, 39.5
LAMPS INSIDE	1	η up (%)	21.7	CIBSE SHR NOM	1.50
TEST VOLTAGE (V)	24	η down (%)	78.3	CIBSE SHR MAX	1.55

LUMINOUS INTENSITY DISTRIBUTION DIAGRAM



C0 PLANE ISOLUX DIAGRAM (UNIT:lx)



C Range: 0 - 360DEG  
C Interval: 30.0DEG  
Test Speed: HIGH  
Temperature: 25.3DEG  
Operators: LPC  
Test Date: 2021-12-08

γ Range: 0 - 180DEG  
γ Interval: 1.0DEG  
Test System: EVERFINE GO-2000B\_V1 SYSTEM V2.0.362  
Humidity: 65.0%  
Test Distance: 9.200m [K=1.0000]  
Remarks:

## ZONAL FLUX DIAGRAM

## ZONAL FLUX DIAGRAM:

$\gamma$	C0	C45	C90	C135	C180	C225	C270	C315	$\gamma$	$\Phi$ zone	$\Phi$ total	%lum, lamp
10	41.30	41.35	40.22	39.71	41.38	40.28	40.18	41.12	0- 10	3.910	3.910	1.96,1.96
20	40.21	39.91	37.61	37.46	40.18	38.07	37.32	39.80	10- 20	11.26	15.17	7.6,7.6
30	38.53	37.38	33.55	34.24	38.66	34.96	33.10	37.48	20- 30	17.30	32.48	16.3,16.3
40	35.96	34.16	28.33	30.56	36.36	31.27	27.71	34.60	30- 40	21.48	53.96	27,27
50	33.56	30.34	22.31	26.38	34.07	27.17	21.51	31.07	40- 50	23.57	77.53	38.8,38.8
60	30.51	26.37	15.78	22.04	31.22	22.83	14.81	27.07	50- 60	23.54	101.1	50.6,50.6
70	27.35	22.17	9.030	17.81	28.05	18.57	8.041	22.99	60- 70	21.66	122.7	61.4,61.4
80	24.01	18.34	2.981	14.10	24.75	14.81	2.270	19.16	70- 80	18.55	141.3	70.7,70.7
90	20.42	15.09	0.5680	11.05	21.23	11.64	0.4214	15.91	80- 90	15.18	156.5	78.3,78.3
100	16.62	11.71	0.6487	8.514	17.42	8.953	0.4672	12.41	90-100	12.35	168.8	84.5,84.5
110	13.71	9.792	0.7438	6.902	14.47	7.303	0.5233	10.45	100-110	9.492	178.3	89.2,89.2
120	11.44	8.016	0.8293	5.548	11.55	6.004	0.5977	8.617	110-120	7.349	185.7	92.9,92.9
130	9.461	6.688	0.9299	4.644	9.592	4.996	0.7889	7.356	120-130	5.577	191.2	95.7,95.7
140	7.586	4.839	1.015	3.696	7.206	4.001	1.015	5.281	130-140	3.910	195.1	97.7,97.7
150	5.536	3.404	1.196	2.701	5.954	3.108	1.266	4.131	140-150	2.456	197.6	98.9,98.9
160	3.737	2.631	1.342	1.787	4.315	2.108	1.422	3.352	150-160	1.372	199.0	99.6,99.6
170	1.629	2.729	1.416	1.023	1.828	1.257	1.583	3.058	160-170	0.6450	199.6	99.9,99.9
180	1.030	1.073	1.412	1.606	1.015	1.008	1.734	1.593	170-180	0.1703	199.8	100,100
DEG	LUMINOUS INTENSITY:cd									UNIT:lm		

Conical surface Flux(90deg): 65.62 lm

%lum = 32.8%

%lamp = 32.8%

Conical surface Flux(120deg): 101.07 lm

%lum = 50.6%

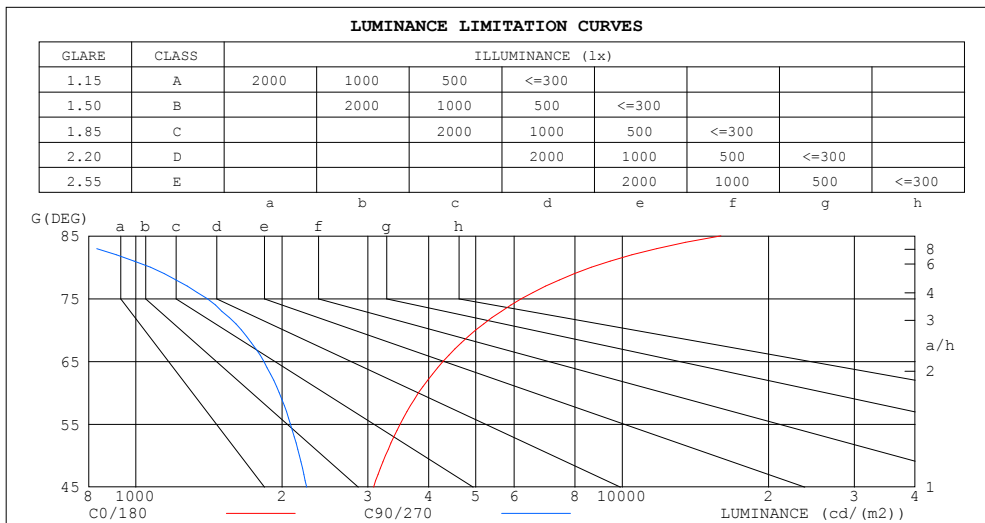
%lamp = 50.6%

C Range: 0 - 360DEG  
 C Interval: 30.0DEG  
 Test Speed: HIGH  
 Temperature:25.3DEG  
 Operators:LPC  
 Test Date:2021-12-08

$\gamma$  Range: 0 - 180DEG  
 $\gamma$  Interval: 1.0DEG  
 Test System:EVERFINE GO-2000B\_V1 SYSTEM V2.0.362  
 Humidity:65.0%  
 Test Distance:9.200m [K=1.0000]  
 Remarks:

## LUMINANCE LIMITATION CURVES

Test:U:24.00V I:0.3274A P:7.858W PF:1.000 Freq:50.00Hz Lamp Flux:199.783x1 lm		
NAME: SF21-24V-2835-120-2200+5700-80-2200	TYPE: 硅胶	WEIGHT:
SPEC.:	DIM.: 28mm*11.5mm	SERIAL No.:2021120806
MFR.: OLYMPIA	SUR.:1*0.016	Shielding Angle:



LUMINANCE cd/(m2)		
G (DEG)	C0/180	C90/270
85	15947	686
80	8641	1073
75	6210	1403
70	4999	1650
65	4282	1834
60	3814	1973
55	3495	2080
50	3263	2170
45	3081	2246

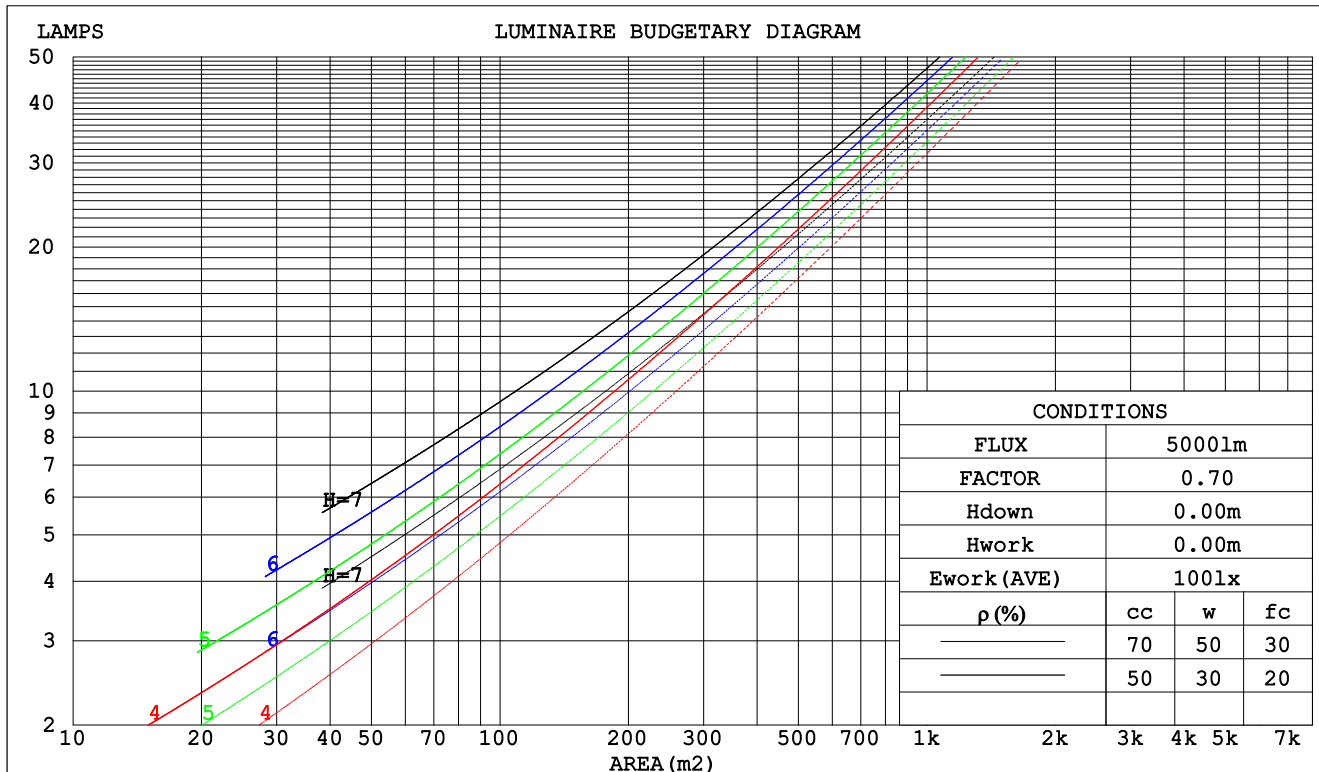
C Range: 0 - 360DEG  
C Interval: 30.0DEG  
Test Speed: HIGH  
Temperature:25.3DEG  
Operators:LPC  
Test Date:2021-12-08

$\gamma$  Range: 0 - 180DEG  
 $\gamma$  Interval: 1.0DEG  
Test System:EVERFINE GO-2000B\_V1 SYSTEM V2.0.362  
Humidity:65.0%  
Test Distance:9.200m [K=1.0000]  
Remarks:

## CU AND LUMINAIRE BUDGETARY ESTIMATE DIAGRAM

Test:U:24.00V I:0.3274A P:7.858W PF:1.000 Freq:50.00Hz Lamp Flux:199.783x1 lm		
NAME: SF21-24V-2835-120-2200+5700-80-2200	TYPE: 硅胶	WEIGHT:
SPEC.:	DIM.: 28mm*11.5mm	SERIAL No.:2021120806
MFR.: OLYMPIA	SUR.:1*0.016	Shielding Angle:

pcc	80%			70%			50%			30%			10%			0
pw	50%	30%	10%	50%	30%	10%	50%	30%	10%	50%	30%	10%	50%	30%	10%	0
pfc	20%			20%			20%			20%			20%			0
RCR	RCR:Room Cavity Ratio			Coefficients of Utilization(CU)												
0.0	1.14	1.14	1.14	1.09	1.09	1.09	.99	.99	.99	.90	.90	.90	.82	.82	.82	.78
1.0	.95	.89	.85	.90	.85	.81	.82	.78	.75	.74	.71	.68	.67	.65	.63	.59
2.0	.81	.73	.67	.77	.70	.64	.70	.64	.59	.63	.59	.55	.57	.54	.50	.47
3.0	.70	.61	.54	.67	.59	.52	.61	.54	.49	.55	.50	.45	.50	.45	.42	.38
4.0	.62	.52	.45	.59	.50	.44	.54	.46	.41	.49	.43	.38	.44	.39	.35	.32
5.0	.55	.45	.38	.52	.44	.37	.48	.40	.35	.43	.37	.32	.39	.34	.30	.27
6.0	.49	.40	.33	.47	.38	.32	.43	.35	.30	.39	.33	.28	.36	.30	.26	.24
7.0	.44	.35	.29	.42	.34	.28	.39	.32	.26	.35	.29	.25	.32	.27	.23	.21
8.0	.40	.31	.25	.38	.30	.25	.35	.28	.23	.32	.26	.22	.30	.24	.20	.18
9.0	.37	.28	.23	.35	.27	.22	.32	.26	.21	.30	.24	.20	.27	.22	.18	.16
10.0	.34	.26	.20	.32	.25	.20	.30	.23	.19	.28	.22	.18	.25	.20	.17	.15



C Range: 0 - 360DEG  
 C Interval: 30.0DEG  
 Test Speed: HIGH  
 Temperature:25.3DEG  
 Operators:LPC  
 Test Date:2021-12-08

γ Range: 0 - 180DEG  
 γ Interval: 1.0DEG  
 Test System:EVERFINE GO-2000B\_V1 SYSTEM V2.0.362  
 Humidity:65.0%  
 Test Distance:9.200m [K=1.0000]  
 Remarks:

## WEC AND CCEC

Test:U:24.00V I:0.3274A P:7.858W PF:1.000 Freq:50.00Hz Lamp Flux:199.783x1 lm		
NAME: SF21-24V-2835-120-2200+5700-80-2200	TYPE: 硅胶	WEIGHT:
SPEC.:	DIM.: 28mm*11.5mm	SERIAL No.:2021120806
MFR.: OLYMPIA	SUR.:1*0.016	Shielding Angle:

pcc	80%			70%			50%			30%			10%			0	
pw	50%	30%	10%	50%	30%	10%	50%	30%	10%	50%	30%	10%	50%	30%	10%	0	
pfc	20%			20%			20%			20%			20%			0	
RCR	RCR:Room Cavity Ratio						Wall Exitance Coefficients(WEC)										
0.0																	
1.0	.385	.219	.069	.371	.212	.067	.345	.198	.063	.322	.186	.060	.300	.174	.056		
2.0	.332	.182	.056	.320	.176	.054	.296	.165	.051	.275	.154	.048	.255	.144	.045		
3.0	.295	.157	.047	.283	.152	.046	.262	.142	.043	.242	.133	.041	.224	.124	.038		
4.0	.265	.138	.041	.255	.133	.039	.236	.125	.037	.218	.117	.035	.201	.109	.033		
5.0	.241	.123	.036	.232	.119	.035	.214	.111	.033	.198	.104	.031	.182	.097	.029		
6.0	.221	.111	.032	.212	.107	.031	.196	.101	.029	.181	.094	.028	.167	.088	.026		
7.0	.203	.101	.029	.196	.098	.028	.181	.092	.026	.167	.086	.025	.154	.080	.024		
8.0	.189	.092	.026	.182	.089	.025	.168	.084	.024	.155	.079	.023	.143	.074	.021		
9.0	.176	.085	.024	.169	.083	.023	.157	.078	.022	.145	.073	.021	.134	.068	.020		
10.0	.165	.079	.022	.159	.077	.021	.147	.072	.020	.136	.068	.019	.126	.063	.018		

pcc	80%			70%			50%			30%			10%			0
pw	50%	30%	10%	50%	30%	10%	50%	30%	10%	50%	30%	10%	50%	30%	10%	0
pfc	20%			20%			20%			20%			20%			0
RCR	RCR:Room Cavity Ratio						Ceiling Cavity Exitance Coefficients(CCEC)									
0.0	.356	.356	.356	.304	.304	.304	.207	.207	.207	.119	.119	.119	.038	.038	.038	
1.0	.352	.322	.295	.301	.276	.254	.206	.190	.176	.119	.110	.102	.038	.035	.033	
2.0	.345	.299	.261	.296	.258	.225	.203	.178	.157	.117	.104	.092	.037	.034	.030	
3.0	.338	.283	.239	.290	.244	.208	.199	.170	.146	.115	.099	.086	.037	.032	.028	
4.0	.330	.271	.225	.283	.234	.196	.195	.163	.138	.113	.095	.082	.036	.031	.027	
5.0	.322	.261	.216	.277	.226	.188	.191	.158	.132	.111	.093	.079	.036	.030	.026	
6.0	.315	.253	.209	.271	.219	.182	.187	.153	.129	.108	.090	.076	.035	.030	.025	
7.0	.308	.247	.203	.265	.214	.177	.183	.150	.126	.106	.088	.075	.034	.029	.025	
8.0	.301	.241	.200	.259	.209	.174	.180	.147	.123	.104	.087	.074	.034	.028	.024	
9.0	.295	.236	.196	.254	.205	.171	.176	.144	.122	.103	.085	.073	.033	.028	.024	
10.0	.289	.232	.194	.249	.202	.169	.173	.142	.120	.101	.084	.072	.033	.028	.024	

C Range: 0 - 360DEG  
C Interval: 30.0DEG  
Test Speed: HIGH  
Temperature:25.3DEG  
Operators:LPC  
Test Date:2021-12-08

γ Range: 0 - 180DEG  
γ Interval: 1.0DEG  
Test System:EVERFINE GO-2000B\_V1 SYSTEM V2.0.362  
Humidity:65.0%  
Test Distance:9.200m [K=1.0000]  
Remarks:

UGR(Unified Glare Rating) Table

Test:U:24.00V I:0.3274A P:7.858W PF:1.000 Freq:50.00Hz Lamp Flux:199.783x1 lm										
NAME: SF21-24V-2835-120-2200+5700-80-2200					TYPE: 硅胶			WEIGHT:		
SPEC.:					DIM.: 28mm*11.5mm			SERIAL No.:2021120806		
MFR.: OLYMPIA					SUR.:1*0.016			Shielding Angle:		
ceiling/cavity	0.7	0.7	0.5	0.5	0.3	0.7	0.7	0.5	0.5	0.3
walls	0.5	0.3	0.5	0.3	0.3	0.5	0.3	0.5	0.3	0.3
working plane	0.2	0.2	0.2	0.2	0.2	0.2	0.2	0.2	0.2	0.2
Room dimensions	Viewed crosswise					Viewed endwise				
x = 2H y = 2H	22.2	23.5	22.7	24.1	24.7	19.7	21.1	20.3	21.6	22.2
3H	24.9	26.1	25.5	26.7	27.4	21.2	22.4	21.7	23.0	23.6
4H	26.4	27.6	27.0	28.2	28.9	21.7	22.9	22.3	23.5	24.2
6H	28.1	29.2	28.7	29.8	30.5	22.1	23.2	22.7	23.8	24.5
8H	29.0	30.1	29.6	30.7	31.4	22.1	23.2	22.8	23.8	24.6
12H	30.1	31.1	30.7	31.7	32.5	22.2	23.2	22.8	23.8	24.6
4H 2H	22.8	23.9	23.4	24.5	25.2	21.1	22.2	21.7	22.8	23.5
3H	25.8	26.8	26.4	27.4	28.2	22.8	23.8	23.5	24.5	25.2
4H	27.5	28.4	28.2	29.1	29.9	23.6	24.6	24.3	25.2	26.0
6H	29.4	30.2	30.1	30.9	31.7	24.2	25.1	24.9	25.8	26.6
8H	30.4	31.2	31.1	31.9	32.8	24.5	25.2	25.2	25.9	26.8
12H	31.6	32.4	32.3	33.1	33.9	24.6	25.3	25.3	26.0	26.9
8H 4H	27.9	28.7	28.6	29.4	30.2	24.9	25.7	25.6	26.4	27.2
6H	30.1	30.8	30.9	31.5	32.4	26.0	26.7	26.7	27.4	28.3
8H	31.4	32.0	32.2	32.8	33.6	26.5	27.1	27.2	27.8	28.7
12H	32.9	33.4	33.6	34.1	35.1	26.9	27.4	27.6	28.2	29.1
12H 4H	27.9	28.6	28.6	29.4	30.2	25.4	26.1	26.1	26.8	27.6
6H	30.3	30.9	31.0	31.6	32.5	26.7	27.3	27.5	28.1	28.9
8H	31.7	32.2	32.4	33.0	33.9	27.4	27.9	28.2	28.7	29.6
Variations with the observer position at spacings:										
S = 1.0H	+ 0.1 / - 0.1					+ 0.1 / - 0.1				
1.5H	+ 0.2 / - 0.3					+ 0.2 / - 0.3				
2.0H	+ 0.3 / - 0.4					+ 0.3 / - 0.4				

CIE Pub.117, 199.8 lm Total Lamp Luminous Flux Correct (8log(F/F0) = -5.6)

C Range: 0 - 360DEG  
 C Interval: 30.0DEG  
 Test Speed: HIGH  
 Temperature:25.3DEG  
 Operators:LPC  
 Test Date:2021-12-08

γ Range: 0 - 180DEG  
 γ Interval: 1.0DEG  
 Test System:EVERFINE GO-2000B\_V1 SYSTEM V2.0.362  
 Humidity:65.0%  
 Test Distance:9.200m [K=1.0000]  
 Remarks:

## UTILIZATION FACTORS TABLE

Test:U:24.00V I:0.3274A P:7.858W PF:1.000 Freq:50.00Hz Lamp Flux:199.783x1 lm		
NAME: SF21-24V-2835-120-2200+5700-80-2200	TYPE: 硅胶	WEIGHT:
SPEC.:	DIM.: 28mm*11.5mm	SERIAL No.:2021120806
MFR.: OLYMPIA	SUR.:1*0.016	Shielding Angle:

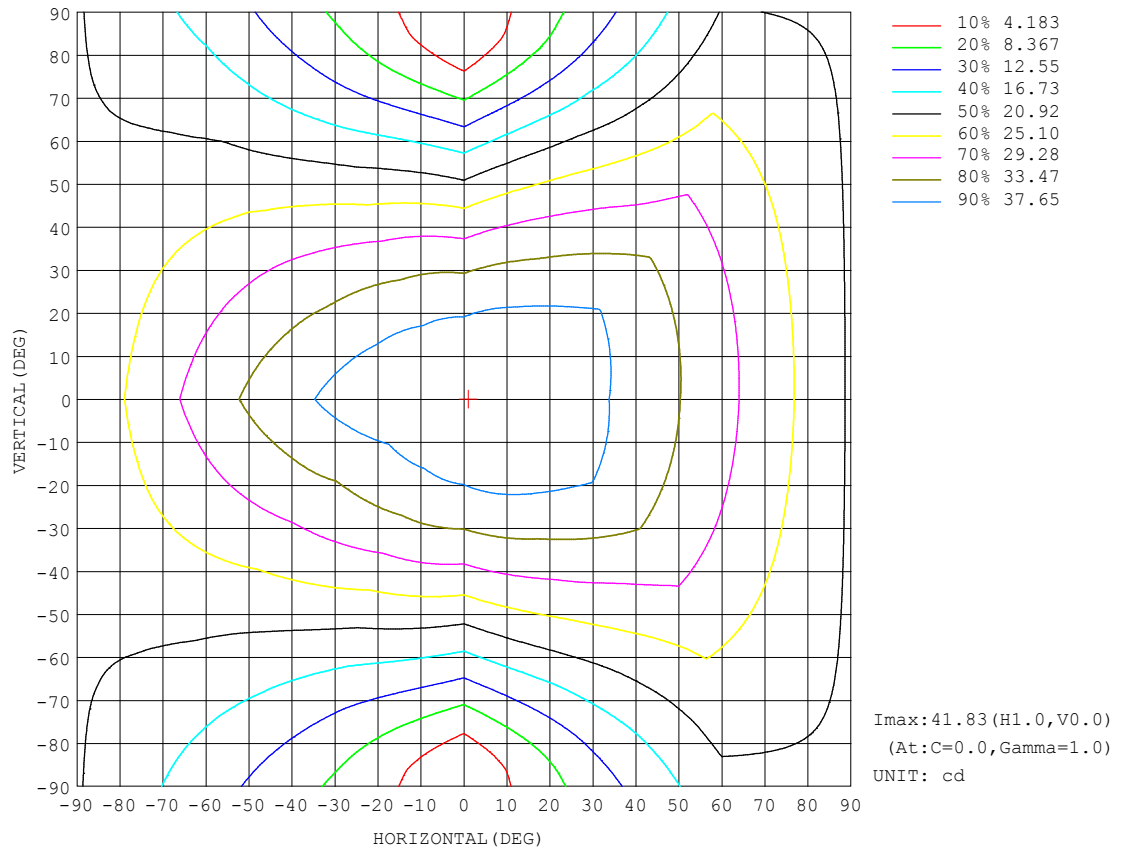
REFLECTANCE										
Ceiling	0.8	0.8	0.8	0.7	0.7	0.7	0.5	0.5	0.5	0
Walls	0.7	0.5	0.3	0.7	0.5	0.3	0.7	0.5	0.3	0
Working plane	0.2	0.2	0.2	0.2	0.2	0.2	0.2	0.2	0.2	0
ROOM INDEX	UTILIZATION FACTORS (PERCENT) $k(RI) \times RCR = 5$									
$k = 0.60$	47	34	27	45	34	27	43	33	26	19
0.80	56	43	35	54	42	34	51	40	33	25
1.00	63	50	42	61	49	41	57	49	40	31
1.25	70	58	49	68	56	48	63	53	46	36
1.50	75	63	54	73	61	53	67	58	51	40
2.00	83	72	63	79	69	61	73	65	58	46
2.50	87	77	69	84	74	67	77	69	63	50
3.00	91	82	74	87	79	72	80	73	67	53
4.00	96	88	81	92	84	78	84	78	73	58
5.00	99	92	86	94	88	83	86	81	77	61
ROOM INDEX	UF (total)									Direct
According to DIN EN 13032-2 2004			Suspended					SHRNOM = 1.25		

C Range: 0 - 360DEG  
 C Interval: 30.0DEG  
 Test Speed: HIGH  
 Temperature: 25.3DEG  
 Operators: LPC  
 Test Date: 2021-12-08

$\gamma$  Range: 0 - 180DEG  
 $\gamma$  Interval: 1.0DEG  
 Test System: EVERFINE GO-2000B\_V1 SYSTEM V2.0.362  
 Humidity: 65.0%  
 Test Distance: 9.200m [K=1.0000]  
 Remarks:

## ISOCANDELA DIAGRAM

Test:U:24.00V I:0.3274A P:7.858W PF:1.000 Freq:50.00Hz Lamp Flux:199.783x1 lm		
NAME: SF21-24V-2835-120-2200+5700-80-2200	TYPE: 硅胶	WEIGHT:
SPEC.:	DIM.: 28mm*11.5mm	SERIAL No.:2021120806
MFR.: OLYMPIA	SUR.:1*0.016	Shielding Angle:



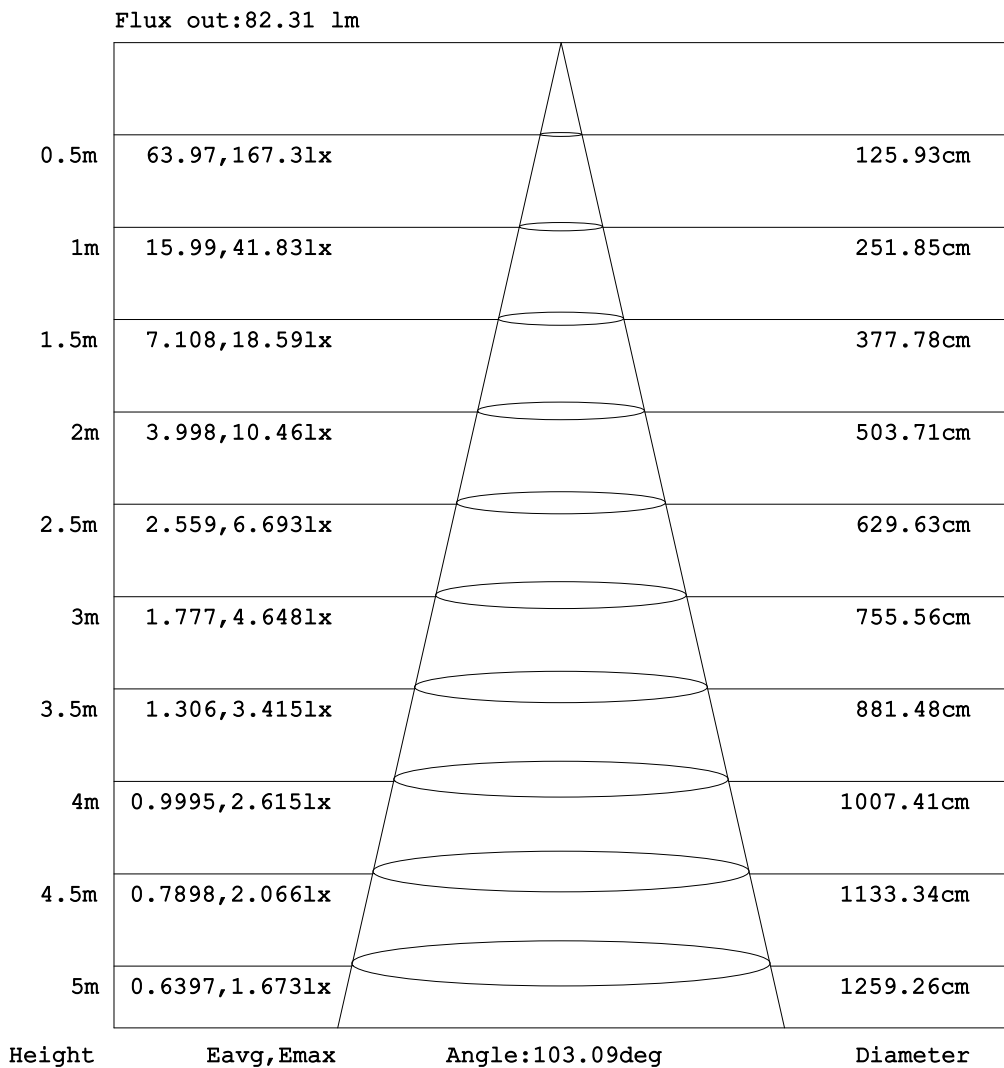
C Range: 0 - 360DEG  
C Interval: 30.0DEG  
Test Speed: HIGH  
Temperature: 25.3DEG  
Operators: LPC  
Test Date: 2021-12-08

$\gamma$  Range: 0 - 180DEG  
 $\gamma$  Interval: 1.0DEG  
Test System: EVERFINE GO-2000B\_V1 SYSTEM V2.0.362  
Humidity: 65.0%  
Test Distance: 9.200m [K=1.0000]  
Remarks:



## AAI Figure

Test:U:24.00V I:0.3274A P:7.858W PF:1.000 Freq:50.00Hz Lamp Flux:199.783x1 lm		
NAME: SF21-24V-2835-120-2200+5700-80-2200	TYPE: 硅胶	WEIGHT:
SPEC.:	DIM.: 28mm*11.5mm	SERIAL No.:2021120806
MFR.: OLYMPIA	SUR.:1*0.016	Shielding Angle:



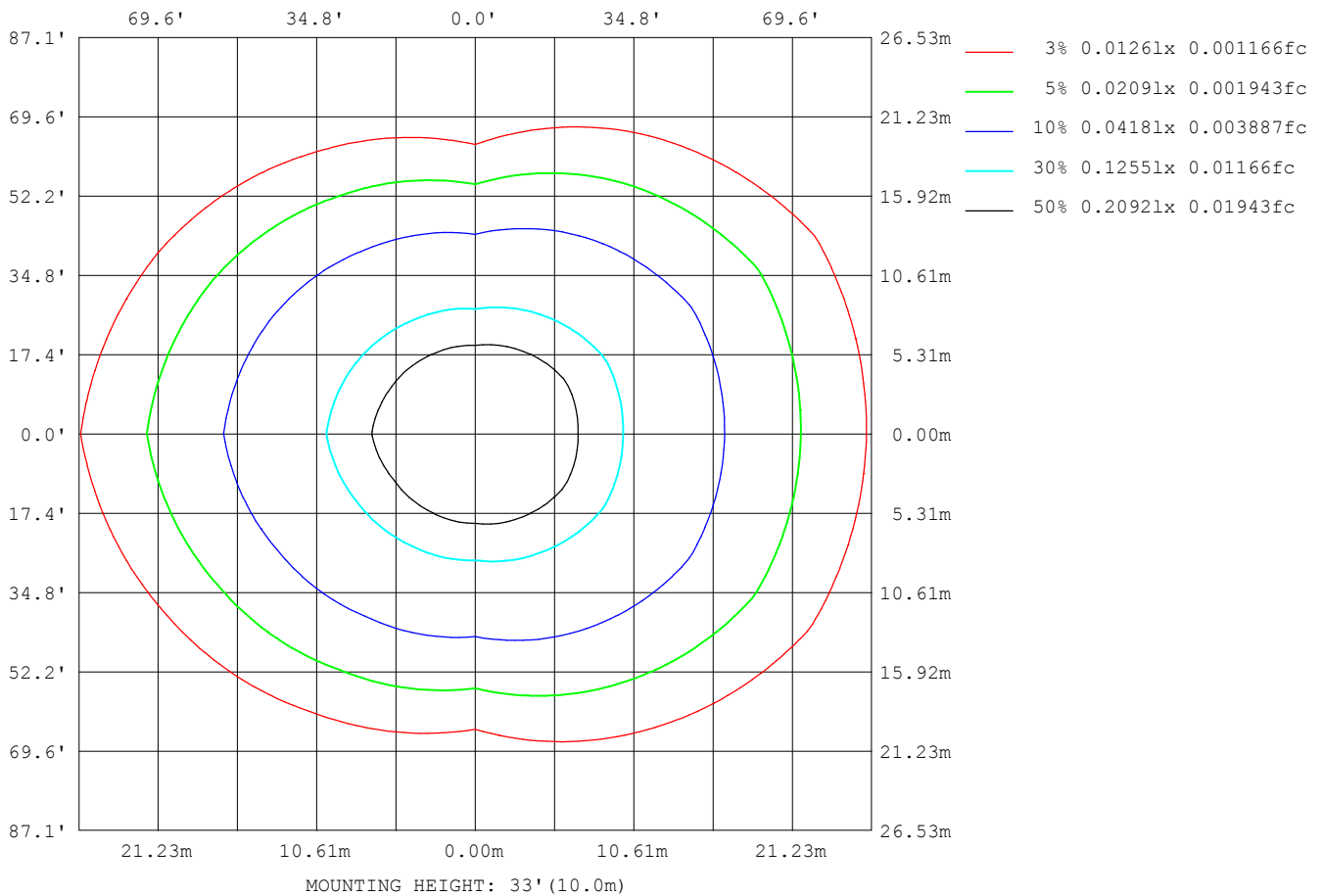
Note: The Curves indicate the illuminated area and the average illumination when the luminaire is at different distance.

C Range: 0 - 360DEG  
 C Interval: 30.0DEG  
 Test Speed: HIGH  
 Temperature: 25.3DEG  
 Operators: LPC  
 Test Date: 2021-12-08

γ Range: 0 - 180DEG  
 γ Interval: 1.0DEG  
 Test System: EVERFINE GO-2000B\_V1 SYSTEM V2.0.362  
 Humidity: 65.0%  
 Test Distance: 9.200m [K=1.0000]  
 Remarks:

## ISOLUX DIAGRAM

Test:U:24.00V I:0.3274A P:7.858W PF:1.000 Freq:50.00Hz Lamp Flux:199.783x1 lm		
NAME: SF21-24V-2835-120-2200+5700-80-2200	TYPE: 硅胶	WEIGHT:
SPEC.:	DIM.: 28mm*11.5mm	SERIAL No.:2021120806
MFR.: OLYMPIA	SUR.:1*0.016	Shielding Angle:



C Range: 0 - 360DEG  
C Interval: 30.0DEG  
Test Speed: HIGH  
Temperature:25.3DEG  
Operators:LPC  
Test Date:2021-12-08

$\gamma$  Range: 0 - 180DEG  
 $\gamma$  Interval: 1.0DEG  
Test System:EVERFINE GO-2000B\_V1 SYSTEM V2.0.362  
Humidity:65.0%  
Test Distance:9.200m [K=1.0000]  
Remarks:

## LED Avg.L Report

Test:U:24.00V I:0.3274A P:7.858W PF:1.000 Freq:50.00Hz Lamp Flux:199.783x1 lm		
NAME: SF21-24V-2835-120-2200+5700-80-2200	TYPE:硅胶	WEIGHT:
SPEC.:	DIM.: 28mm*11.5mm	SERIAL No.:2021120806
MFR.: OLYMPIA	SUR.:1*0.016	Shielding Angle:

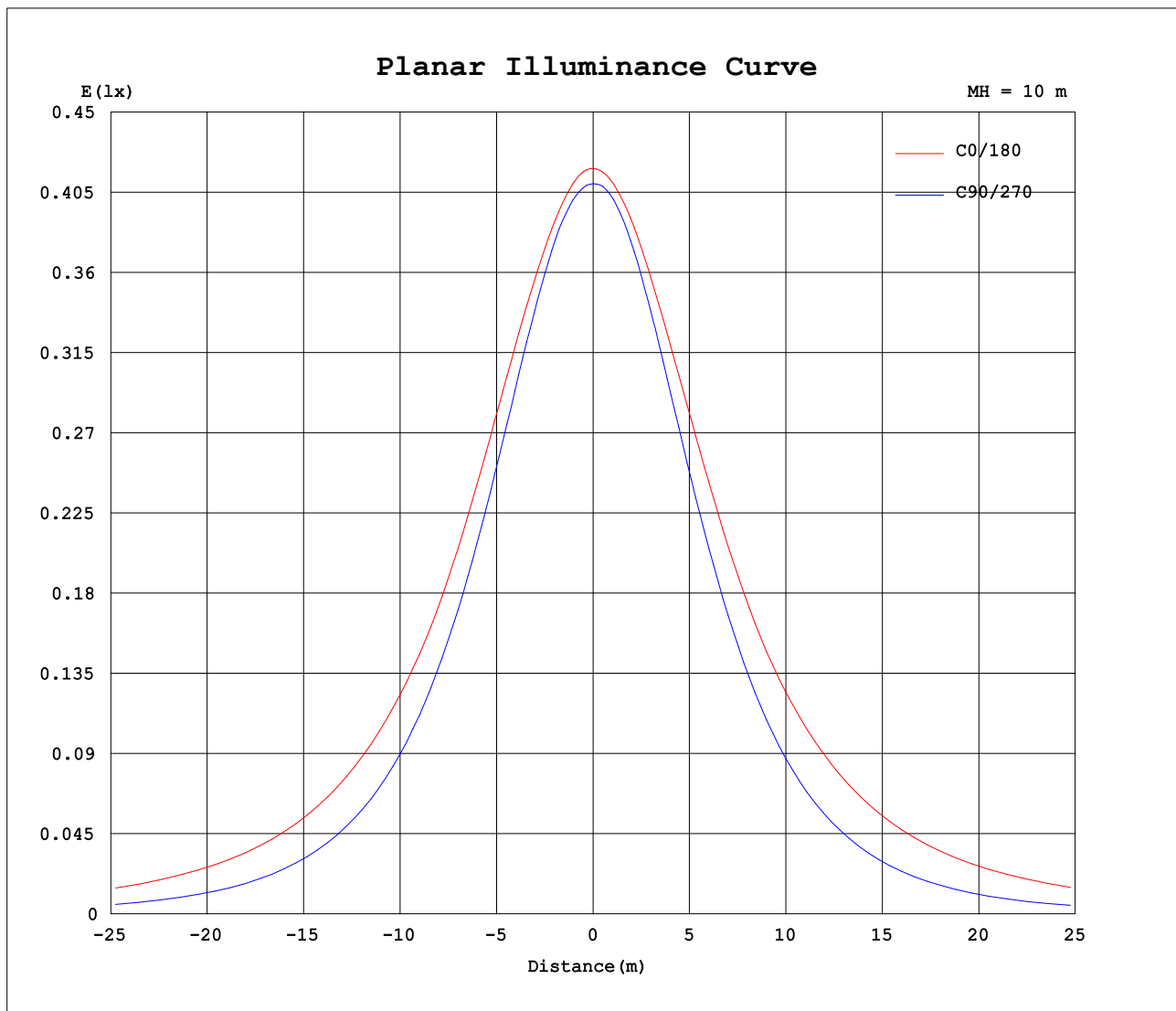
AvgL	cd/m2
L_0~180 (65) av	4333
L_0~180 (75) av	6295
L_0~180 (85) av	16225
L_90~270 (65) av	1760
L_90~270 (75) av	1294
L_90~270 (85) av	538
L_45 (65) av	3357
L_45 (75) av	4534
L_45 (85) av	10986

Standard: GB/T 29293-2012

C Range: 0 - 360DEG  
C Interval: 30.0DEG  
Test Speed: HIGH  
Temperature:25.3DEG  
Operators:LPC  
Test Date:2021-12-08

γ Range: 0 - 180DEG  
γ Interval: 1.0DEG  
Test System:EVERFINE GO-2000B\_V1 SYSTEM V2.0.362  
Humidity:65.0%  
Test Distance:9.200m [K=1.0000]  
Remarks:

## Planar Illuminance Curve



C Range: 0 - 360DEG  
C Interval: 30.0DEG  
Test Speed: HIGH  
Temperature: 25.3DEG  
Operators: LPC  
Test Date: 2021-12-08

$\gamma$  Range: 0 - 180DEG  
 $\gamma$  Interval: 1.0DEG  
Test System: EVERFINE GO-2000B\_V1 SYSTEM V2.0.362  
Humidity: 65.0%  
Test Distance: 9.200m [K=1.0000]  
Remarks:



## Photometric Data Table [cd]

G/C	0.0	30.0	60.0	90.0	120.0	150.0	180.0	210.0	240.0	270.0
0.0	41.83	41.54	41.25	40.99	40.99	40.95	41.83	41.54	41.25	40.99
3.0	41.81	41.70	41.30	40.91	40.73	40.62	41.79	41.30	41.05	40.98
6.0	41.64	41.70	41.31	40.71	40.37	40.23	41.67	40.97	40.75	40.78
9.0	41.39	41.66	41.15	40.37	39.93	39.82	41.46	40.57	40.32	40.37
12.0	41.11	41.51	40.81	39.81	39.34	39.36	41.19	40.11	39.70	39.75
15.0	40.78	41.27	40.30	39.11	38.61	38.82	40.85	39.61	38.96	38.96
18.0	40.45	40.93	39.68	38.22	37.79	38.18	40.45	39.07	38.11	38.08
21.0	40.08	40.47	38.91	37.27	36.88	37.48	40.06	38.40	37.20	36.94
24.0	39.64	39.91	38.03	36.14	35.88	36.64	39.65	37.64	36.18	35.84
27.0	39.13	39.35	37.06	34.87	34.81	35.76	39.19	36.84	35.10	34.45
30.0	38.53	38.77	35.98	33.55	33.64	34.85	38.66	35.95	33.96	33.10
33.0	37.83	38.13	34.81	32.08	32.39	33.95	38.05	35.01	32.74	31.61
36.0	37.06	37.45	33.60	30.51	31.07	33.11	37.36	34.07	31.46	29.99
39.0	36.20	36.68	32.35	28.89	29.68	32.22	36.61	33.16	30.11	28.29
42.0	35.52	35.83	31.06	27.19	28.24	31.24	35.88	32.28	28.70	26.53
45.0	34.86	34.91	29.77	25.41	26.78	30.21	35.23	31.33	27.22	24.70
48.0	34.10	33.91	28.42	23.58	25.33	29.14	34.57	30.31	25.73	22.79
51.0	33.28	32.82	27.06	21.69	23.89	28.02	33.81	29.23	24.26	20.85
54.0	32.39	31.84	25.65	19.75	22.41	26.91	32.99	28.14	22.80	18.89
57.0	31.45	30.96	24.21	17.81	20.91	25.80	32.14	27.01	21.32	16.86
60.0	30.51	30.01	22.73	15.78	19.39	24.69	31.22	25.87	19.79	14.81
63.0	29.60	29.01	21.24	13.75	17.88	23.59	30.27	24.79	18.26	12.77
66.0	28.65	27.94	19.72	11.74	16.42	22.52	29.32	23.72	16.79	10.73
69.0	27.69	26.88	18.28	9.689	14.98	21.45	28.36	22.63	15.33	8.720
72.0	26.72	25.83	16.97	7.703	13.66	20.39	27.40	21.58	13.95	6.761
75.0	25.72	24.80	15.65	5.810	12.41	19.39	26.42	20.52	12.68	4.906
78.0	24.70	23.81	14.38	4.026	11.27	18.31	25.43	19.48	11.51	3.216
81.0	23.66	22.76	13.19	2.484	10.24	17.27	24.42	18.45	10.44	1.818
84.0	22.60	21.81	12.15	1.288	9.271	16.29	23.37	17.40	9.475	0.7220
87.0	21.51	20.77	11.24	0.6079	8.426	15.31	22.32	16.38	8.606	0.4326
90.0	20.42	19.75	10.44	0.5680	7.712	14.39	21.23	15.44	7.848	0.4214
93.0	19.34	18.79	9.737	0.5881	7.128	13.55	20.16	14.52	7.220	0.4352
96.0	18.29	17.82	9.114	0.6081	6.676	12.78	19.12	13.67	6.718	0.4489
99.0	17.27	16.03	8.566	0.6334	6.294	11.01	17.97	11.89	6.306	0.4626
102.0	16.00	14.77	8.058	0.6716	5.922	10.65	16.81	11.45	5.965	0.5125
105.0	15.09	14.18	6.737	0.7059	4.591	10.23	15.88	10.96	4.799	0.5166
108.0	14.24	13.50	6.569	0.7338	4.388	9.799	15.02	10.48	4.687	0.5206
111.0	13.46	12.85	6.459	0.7438	4.268	9.169	14.20	9.853	4.376	0.5246
114.0	12.72	12.20	5.381	0.7640	4.001	8.391	13.14	9.314	4.095	0.5287
117.0	12.05	11.61	4.968	0.8092	3.841	7.844	12.19	8.717	3.920	0.5327
120.0	11.44	11.08	4.951	0.8293	3.675	7.422	11.55	8.173	3.834	0.5977
123.0	10.84	10.58	4.604	0.8645	3.562	7.055	10.93	7.656	3.653	0.6330
126.0	10.25	10.10	4.383	0.8996	3.463	6.648	10.35	7.168	3.568	0.6934
129.0	9.662	9.611	4.167	0.9198	3.278	6.241	9.773	6.721	3.442	0.7688
132.0	9.089	8.546	4.001	0.9450	3.101	5.849	9.220	6.334	3.266	0.8391
135.0	8.511	7.627	3.845	0.9751	2.956	5.379	8.662	5.901	3.090	0.9144
138.0	7.958	6.626	3.639	1.010	2.775	5.010	7.681	5.462	2.899	0.9848
141.0	7.405	5.978	3.488	1.020	2.559	4.638	6.319	5.102	2.718	1.045
144.0	6.802	5.271	3.358	1.040	2.378	4.291	6.949	4.710	2.568	1.111
147.0	6.184	4.581	3.197	1.071	2.147	3.894	6.322	4.328	2.407	1.176
150.0	5.536	3.772	3.036	1.196	1.871	3.532	5.954	3.976	2.240	1.266
153.0	4.973	3.013	2.960	1.246	1.644	3.175	5.451	3.630	1.969	1.327
156.0	4.455	2.306	3.065	1.282	1.288	2.838	5.014	3.293	1.723	1.372
159.0	3.967	2.151	3.086	1.327	1.447	2.401	4.526	2.986	1.476	1.407
162.0	3.474	2.368	3.088	1.367	1.167	1.964	4.059	2.690	1.119	1.457
165.0	3.112	2.485	3.079	1.407	1.038	1.486	3.773	2.258	1.096	1.503
168.0	1.735	2.491	3.036	1.412	1.032	1.521	1.995	1.780	1.072	1.568
171.0	1.579	2.457	2.960	1.417	1.025	1.015	1.728	1.163	1.048	1.603
174.0	1.368	2.372	2.870	1.422	1.015	1.010	1.527	1.034	1.024	1.648
177.0	1.227	2.276	2.760	1.427	1.000	1.000	1.326	1.030	1.000	1.684
180.0	1.030	1.030	1.116	1.412	1.739	1.473	1.015	1.010	1.005	1.734
G/C	300.0	330.0								
0.0	40.99	40.95								
3.0	41.06	41.21								
6.0	41.05	41.37								
9.0	40.89	41.45								
12.0	40.55	41.45								
15.0	40.06	41.24								
18.0	39.41	40.95								
21.0	38.64	40.57								
24.0	37.76	40.14								
27.0	36.80	39.66								
30.0	35.81	39.14								

C Range: 0 - 360DEG  
 C Interval: 30.0DEG  
 Test Speed: HIGH  
 Temperature: 25.3DEG  
 Operators: LPC  
 Test Date: 2021-12-08

γ Range: 0 - 180DEG  
 γ Interval: 1.0DEG  
 Test System: EVERFINE GO-2000B\_V1 SYSTEM V2.0.362  
 Humidity: 65.0%  
 Test Distance: 9.200m [K=1.0000]  
 Remarks:

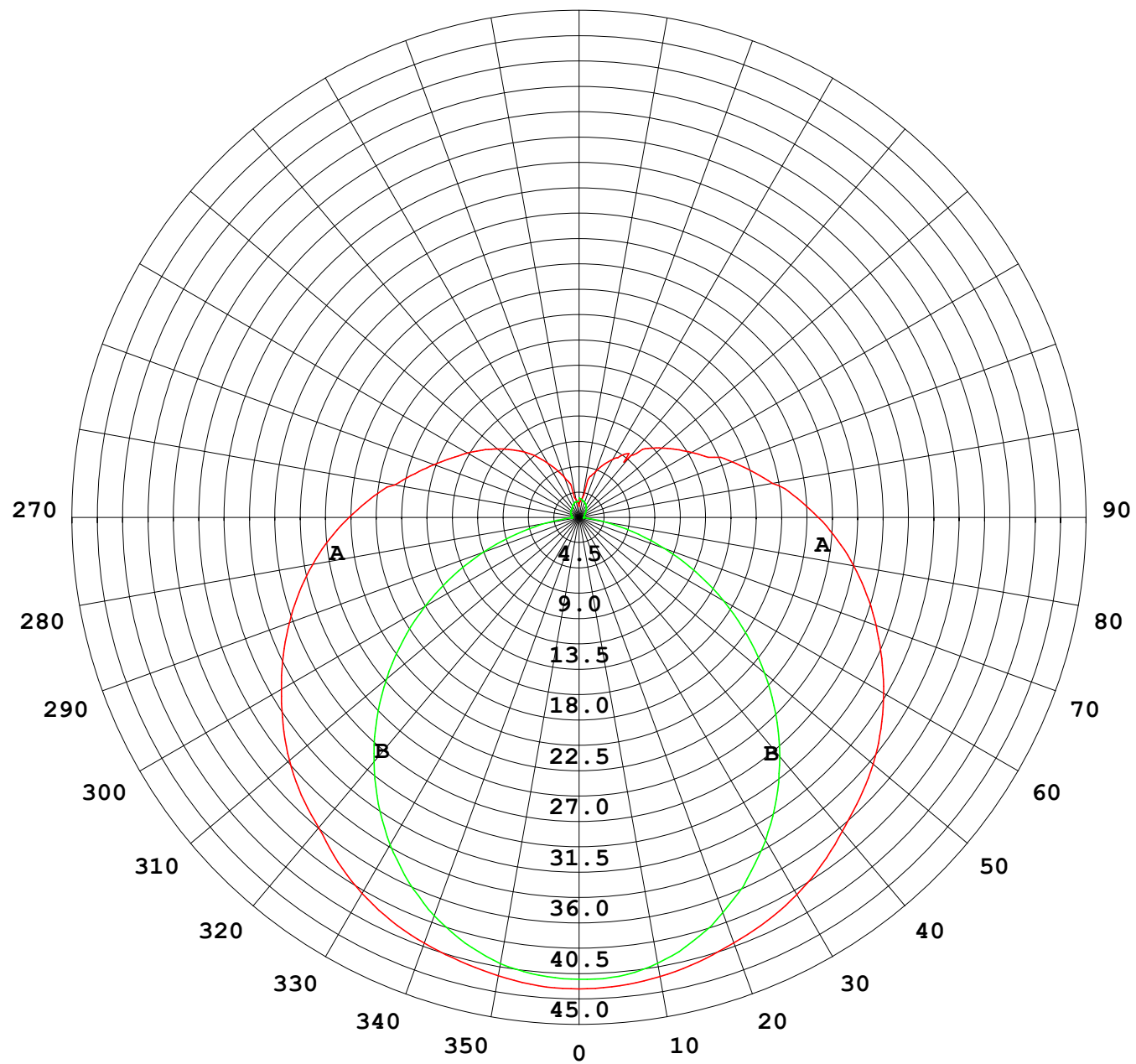
## Photometric Data Table [cd]

33.0	34.76	38.54
36.0	33.66	37.94
39.0	32.52	37.29
42.0	31.34	36.56
45.0	30.09	35.77
48.0	28.78	34.89
51.0	27.42	33.93
54.0	26.05	32.91
57.0	24.64	31.86
60.0	23.18	30.97
63.0	21.72	30.07
66.0	20.22	29.11
69.0	18.71	28.11
72.0	17.32	27.07
75.0	16.03	26.02
78.0	14.75	25.02
81.0	13.52	24.07
84.0	12.44	23.10
87.0	11.51	22.11
90.0	10.68	21.14
93.0	9.953	20.17
96.0	9.305	19.20
99.0	8.646	17.44
102.0	7.821	16.19
105.0	7.185	15.51
108.0	6.849	14.78
111.0	6.697	13.87
114.0	6.540	12.95
117.0	6.135	12.23
120.0	5.813	11.42
123.0	5.573	11.02
126.0	5.291	10.56
129.0	5.025	10.07
132.0	4.754	9.275
135.0	4.492	8.370
138.0	4.130	7.420
141.0	3.809	6.554
144.0	3.573	6.047
147.0	3.412	5.515
150.0	3.200	5.062
153.0	3.106	4.625
156.0	3.169	4.173
159.0	3.177	3.700
162.0	3.186	3.258
165.0	3.165	2.986
168.0	3.131	2.985
171.0	3.071	3.021
174.0	3.020	2.955
177.0	2.935	2.890
180.0	1.699	1.488

C Range: 0 - 360DEG  
C Interval: 30.0DEG  
Test Speed: HIGH  
Temperature:25.3DEG  
Operators:LPC  
Test Date:2021-12-08

γ Range: 0 - 180DEG  
γ Interval: 1.0DEG  
Test System:EVERFINE GO-2000B\_V1 SYSTEM V2.0.362  
Humidity:65.0%  
Test Distance:9.200m [K=1.0000]  
Remarks:

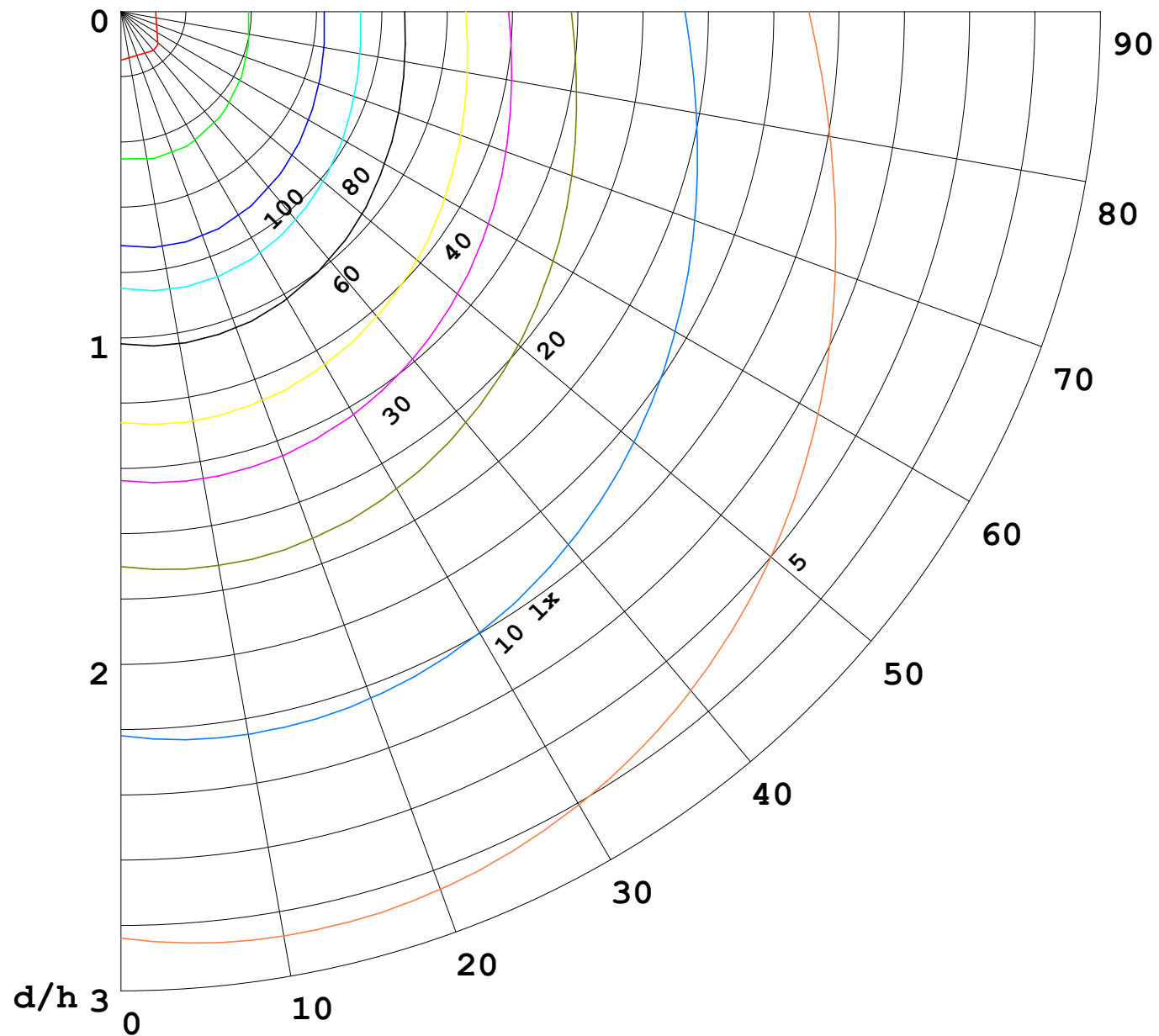
I (cd)





1000 lm

$\kappa = 1$



F = 5000 lm  
 K = 0.7  
 Hcc = 0.0 m  
 Hfc = 0.0 m  
 Eave = 100 lx

	Pcc	Pw	Pfc
—	70	50	30
—	50	30	20

