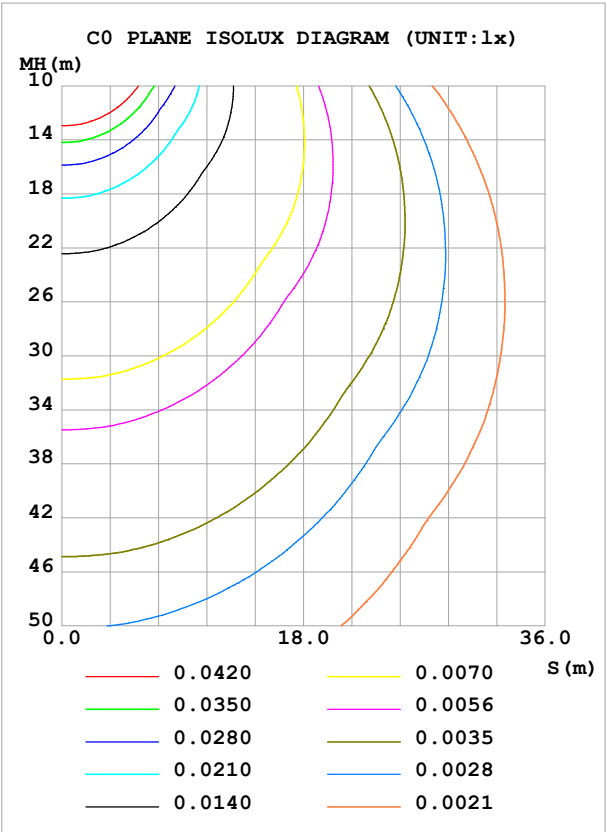
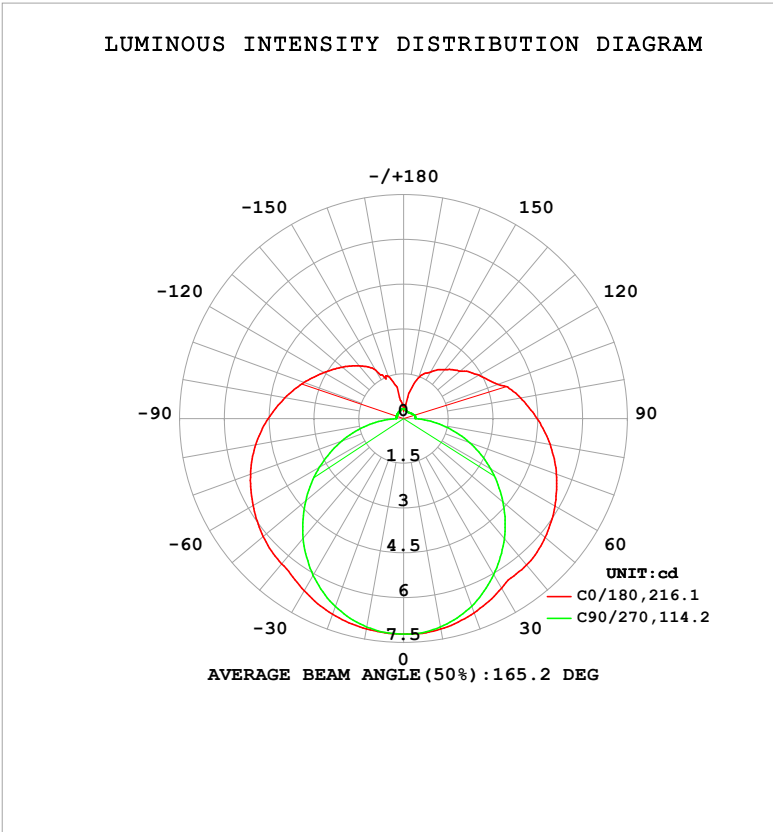


LUMINAIRE PHOTOMETRIC TEST REPORT

Test:U:24.00V I:0.1653A P:3.967W PF:1.000 Freq:0Hz Lamp Flux:41.1975x1 lm		
NAME: SF21-24V-5050-60-RGBW(2700)	TYPE:	WEIGHT:
SPEC.:	DIM.: Length=1m	SERIAL No.:
MFR.:	SUR.:	Shielding Angle:

DATA OF LAMP		PHOTOMETRIC DATA				Eff: 10.38 lm/W
MODEL		Imax (cd)	7.220	S/MH(C0/180)	1.38	
NOMINAL POWER(W)		LOR(%)	100.0	S/MH(C90/270)	1.25	
RATED VOLTAGE(V)		TOTAL FLUX(lm)	41.198	η UP,DN(C0-180)	14.1,35.8	
NOMINAL FLUX(lm)	41.1975	CIE CLASS	SEMI-D.	η UP,DN(C180-360)	14.2,36.0	
LAMPS INSIDE	1	η up (%)	28.3	CIBSE SHR NOM	1.50	
TEST VOLTAGE(V)		η down (%)	71.7	CIBSE SHR MAX	1.55	



C Range: 0 - 360DEG
C Interval: 22.5DEG
Test Speed: HIGH
Temperature:25.3℃
Operators:Cloud
Test Date:2024-09-30

γ Range: 0 - 180DEG
γ Interval: 1.0DEG
Test System:EVERFINE GO-2000B_V1 SYSTEM V2.00.488
Humidity:65.0%
Test Distance:6.360m [K=1.0000]
Remarks: RED

ZONAL FLUX DIAGRAM

ZONAL FLUX DIAGRAM:

γ	C0	C45	C90	C135	C180	C225	C270	C315	γ	Φ zone	Φ total	%lum, lamp
10	7.159	7.148	7.086	7.121	7.158	7.113	7.094	7.135	0- 10	0.6849	0.6849	1.66,1.66
20	6.922	6.840	6.683	6.808	6.969	6.836	6.702	6.842	10- 20	1.977	2.662	6.46,6.46
30	6.559	6.337	6.040	6.331	6.662	6.365	6.067	6.355	20- 30	3.046	5.708	13.9,13.9
40	6.405	5.709	5.255	5.708	6.352	5.757	5.241	5.729	30- 40	3.794	9.502	23.1,23.1
50	6.192	5.209	4.343	5.119	6.141	5.187	4.278	5.197	40- 50	4.245	13.75	33.4,33.4
60	5.861	4.671	3.371	4.555	5.822	4.635	3.257	4.668	50- 60	4.387	18.13	44,44
70	5.448	4.095	2.350	3.961	5.459	4.065	2.201	4.093	60- 70	4.230	22.36	54.3,54.3
80	4.984	3.560	1.324	3.446	5.030	3.544	1.158	3.544	70- 80	3.854	26.22	63.6,63.6
90	4.475	3.109	0.3971	2.991	4.539	3.070	0.2388	3.055	80- 90	3.335	29.55	71.7,71.7
100	3.985	2.746	0.3939	2.638	4.040	2.704	0.2646	2.705	90-100	2.863	32.42	78.7,78.7
110	3.356	2.155	0.3739	2.367	3.546	2.408	0.2646	1.769	100-110	2.402	34.82	84.5,84.5
120	2.918	1.919	0.3221	2.168	3.091	2.187	0.2617	1.812	110-120	1.975	36.79	89.3,89.3
130	2.472	1.563	0.2962	1.978	2.680	1.992	0.2704	1.548	120-130	1.594	38.39	93.2,93.2
140	2.152	1.201	0.2703	1.739	2.311	1.744	0.2818	1.311	130-140	1.215	39.60	96.1,96.1
150	1.803	1.001	0.2646	1.519	1.872	1.518	0.2933	1.067	140-150	0.8295	40.43	98.1,98.1
160	1.437	0.7214	0.2703	1.204	1.507	1.189	0.3163	0.7509	150-160	0.4914	40.92	99.3,99.3
170	0.4904	0.5905	0.3019	0.8171	0.6293	0.8195	0.3336	0.5773	160-170	0.2261	41.15	99.9,99.9
180	0.3163	0.3373	0.3278	0.3528	0.3340	0.3431	0.3364	0.3442	170-180	0.0496	41.20	100,100
DEG	LUMINOUS INTENSITY:cd									UNIT:lm		

Conical surface Flux(90deg): 11.586 lm

%lum = 28.1%

%lamp = 28.1%

Conical surface Flux(130deg): 20.282 lm

%lum = 49.2%

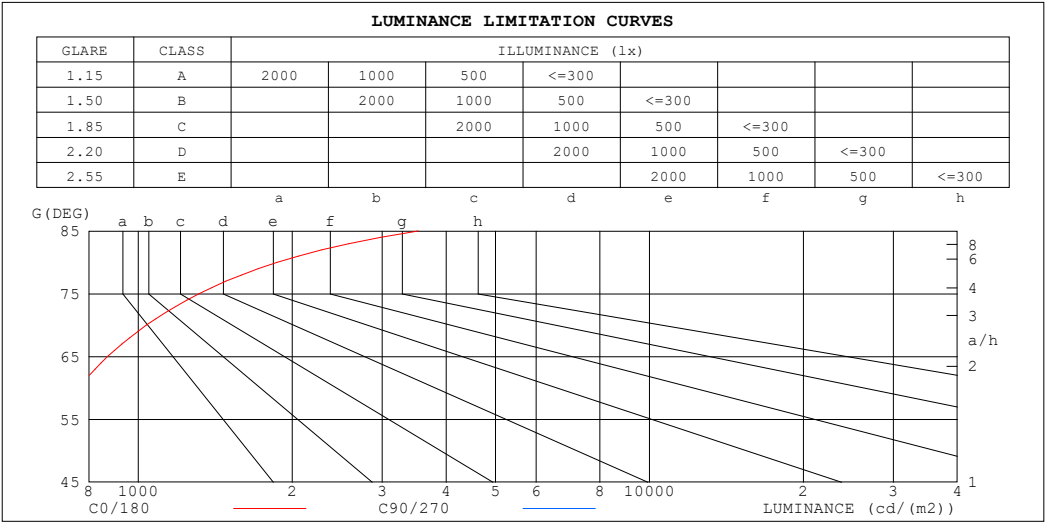
%lamp = 49.2%

C Range: 0 - 360DEG
 C Interval: 22.5DEG
 Test Speed: HIGH
 Temperature:25.3℃
 Operators:Cloud
 Test Date:2024-09-30

γ Range: 0 - 180DEG
 γ Interval: 1.0DEG
 Test System:EVERFINE GO-2000B_V1 SYSTEM V2.00.488
 Humidity:65.0%
 Test Distance:6.360m [K=1.0000]
 Remarks: RED

LUMINANCE LIMITATION CURVES

Test:U:24.00V I:0.1653A P:3.967W PF:1.000 Freq:0Hz Lamp Flux:41.1975x1 lm		
NAME: SF21-24V-5050-60-RGBW(2700)	TYPE:	WEIGHT:
SPEC.:	DIM.: Length=1m	SERIAL No.:
MFR.:	SUR.:	Shielding Angle:



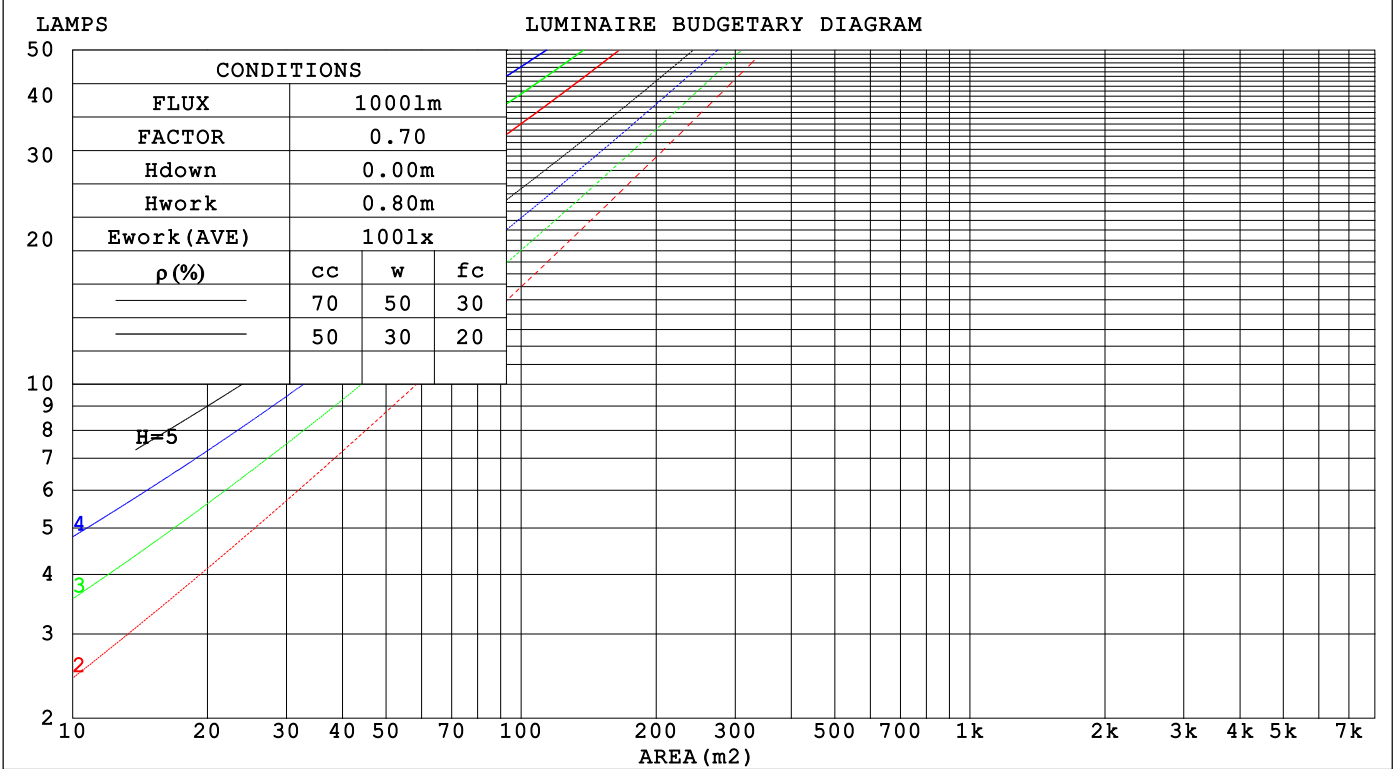
LUMINANCE cd/(m2)		
G (DEG)	C0/180	C90/270
85	3531	621
80	1868	510
75	1315	475
70	1037	460
65	871	453
60	763	451
55	685	451
50	627	452
45	582	455

C Range: 0 - 360DEG	γ Range: 0 - 180DEG
C Interval: 22.5DEG	γ Interval: 1.0DEG
Test Speed: HIGH	Test System:EVERFINE GO-2000B_V1 SYSTEM V2.00.488
Temperature:25.3℃	Humidity:65.0%
Operators:Cloud	Test Distance:6.360m [K=1.0000]
Test Date:2024-09-30	Remarks: RED

CU AND LUMINAIRE BUDGETARY ESTIMATE DIAGRAM

Test:U:24.00V I:0.1653A P:3.967W PF:1.000 Freq:0Hz																	
Lamp Flux:41.1975x1 lm																	
NAME: SF21-24V-5050-60-RGBW(2700)									TYPE:			WEIGHT:					
SPEC.:									DIM.: Length=1m			SERIAL No.:					
MFR.:									SUR.:			Shielding Angle:					

pcc	80%			70%			50%			30%			10%			0
pw	50%	30%	10%	50%	30%	10%	50%	30%	10%	50%	30%	10%	50%	30%	10%	0
pfc	20%			20%			20%			20%			20%			0
RCR	RCR:Room Cavity Ratio Coefficients of Utilization(CU)															
0.0	1.12	1.12	1.12	1.06	1.06	1.06	.95	.95	.95	.85	.85	.85	.76	.76	.76	.72
1.0	.93	.87	.82	.88	.83	.78	.78	.74	.71	.69	.66	.64	.61	.59	.57	.53
2.0	.79	.71	.65	.75	.68	.62	.67	.61	.56	.59	.54	.50	.52	.48	.45	.41
3.0	.68	.59	.52	.65	.57	.50	.58	.51	.46	.51	.46	.41	.45	.41	.37	.34
4.0	.60	.51	.43	.57	.48	.42	.51	.44	.38	.45	.39	.34	.40	.35	.31	.28
5.0	.53	.44	.37	.50	.42	.35	.45	.38	.32	.40	.34	.29	.35	.30	.27	.24
6.0	.48	.38	.32	.45	.37	.30	.40	.33	.28	.36	.30	.25	.32	.27	.23	.20
7.0	.43	.34	.28	.41	.32	.26	.37	.29	.24	.33	.27	.22	.29	.24	.20	.18
8.0	.39	.30	.24	.37	.29	.23	.33	.26	.22	.30	.24	.20	.27	.22	.18	.16
9.0	.35	.27	.22	.34	.26	.21	.30	.24	.19	.27	.22	.18	.25	.20	.16	.14
10.0	.33	.25	.19	.31	.24	.19	.28	.22	.17	.25	.20	.16	.23	.18	.15	.13



C Range: 0 - 360DEG
C Interval: 22.5DEG
Test Speed: HIGH
Temperature:25.3℃
Operators:Cloud
Test Date:2024-09-30

γ Range: 0 - 180DEG
γ Interval: 1.0DEG
Test System:EVERFINE GO-2000B_V1 SYSTEM V2.00.488
Humidity:65.0%
Test Distance:6.360m [K=1.0000]
Remarks: RED

WEC AND CCEC

Test:U:24.00V I:0.1653A P:3.967W PF:1.000 Freq:0Hz Lamp Flux:41.1975x1 lm					
NAME: SF21-24V-5050-60-RGBW(2700)			TYPE:		WEIGHT:
SPEC.:			DIM.: Length=1m		SERIAL No.:
MFR.:			SUR.:		Shielding Angle:

pcc	80%			70%			50%			30%			10%			0														
pw	50%	30%	10%	50%	30%	10%	50%	30%	10%	50%	30%	10%	50%	30%	10%	0														
pfc	20%			20%			20%			20%			20%			0														
RCR	RCR:Room Cavity Ratio															Wall Exitance Coefficients(WEC)														
0.0																														
1.0	.392	.223	.071	.376	.214	.068	.346	.199	.063	.319	.184	.059	.294	.170	.055															
2.0	.335	.184	.056	.321	.177	.054	.294	.163	.051	.269	.151	.047	.246	.139	.044															
3.0	.296	.157	.047	.283	.151	.046	.258	.140	.043	.236	.129	.040	.214	.119	.037															
4.0	.265	.138	.041	.253	.133	.039	.231	.123	.037	.210	.113	.034	.191	.104	.032															
5.0	.241	.123	.036	.230	.118	.034	.209	.109	.032	.190	.100	.030	.173	.092	.028															
6.0	.220	.110	.032	.210	.106	.031	.191	.098	.029	.174	.090	.027	.158	.083	.025															
7.0	.203	.100	.028	.194	.096	.027	.176	.089	.026	.160	.082	.024	.145	.075	.022															
8.0	.188	.092	.026	.179	.088	.025	.164	.082	.023	.149	.075	.022	.135	.069	.020															
9.0	.175	.085	.024	.167	.081	.023	.153	.075	.021	.139	.070	.020	.126	.064	.018															
10.0	.164	.078	.022	.156	.076	.021	.143	.070	.020	.130	.065	.018	.118	.059	.017															

pcc	80%			70%			50%			30%			10%			0
pw	50%	30%	10%	50%	30%	10%	50%	30%	10%	50%	30%	10%	50%	30%	10%	0
pfc	20%			20%			20%			20%			20%			0
RCR	RCR:Room Cavity Ratio						Ceiling Cavity Exitance Coefficients (CCEC)									
0.0	.406	.406	.406	.347	.347	.347	.237	.237	.237	.136	.136	.136	.043	.043	.043	
1.0	.403	.373	.345	.345	.320	.297	.236	.220	.205	.136	.127	.119	.043	.041	.039	
2.0	.397	.350	.311	.340	.302	.269	.233	.209	.188	.134	.121	.110	.043	.039	.036	
3.0	.389	.334	.290	.334	.288	.252	.229	.200	.177	.132	.117	.104	.043	.038	.034	
4.0	.382	.322	.277	.327	.278	.240	.225	.194	.169	.130	.114	.100	.042	.037	.033	
5.0	.374	.313	.267	.321	.270	.232	.221	.189	.164	.128	.111	.097	.041	.036	.032	
6.0	.367	.305	.260	.315	.264	.227	.217	.185	.160	.126	.109	.095	.041	.036	.031	
7.0	.360	.298	.255	.309	.259	.223	.214	.181	.158	.124	.107	.094	.040	.035	.031	
8.0	.353	.293	.252	.304	.254	.219	.210	.178	.156	.122	.105	.093	.040	.034	.031	
9.0	.347	.288	.249	.299	.250	.217	.207	.176	.154	.121	.104	.092	.039	.034	.030	
10.0	.341	.284	.246	.294	.247	.215	.204	.174	.153	.119	.103	.091	.039	.034	.030	

C Range: 0 - 360DEG
C Interval: 22.5DEG
Test Speed: HIGH
Temperature:25.3℃
Operators:Cloud
Test Date:2024-09-30

γ Range: 0 - 180DEG
γ Interval: 1.0DEG
Test System:EVERFINE GO-2000B_V1 SYSTEM V2.00.488
Humidity:65.0%
Test Distance:6.360m [K=1.0000]
Remarks: RED

UGR(Unified Glare Rating) Table

Test:U:24.00V I:0.1653A P:3.967W PF:1.000 Freq:0Hz Lamp Flux:41.1975x1 lm											
NAME: SF21-24V-5050-60-RGBW(2700)					TYPE:			WEIGHT:			
SPEC.:					DIM.: Length=1m			SERIAL No.:			
MFR.:					SUR.:			Shielding Angle:			
ceiling/cavity		0.7	0.7	0.5	0.5	0.3	0.7	0.7	0.5	0.5	0.3
walls		0.5	0.3	0.5	0.3	0.3	0.5	0.3	0.5	0.3	0.3
working plane		0.2	0.2	0.2	0.2	0.2	0.2	0.2	0.2	0.2	0.2
Room dimensions		Viewed crosswise					Viewed endwise				
x = 2H y = 2H		21.3	22.6	21.9	23.2	24.0	18.9	20.2	19.5	20.8	21.6
3H		24.2	25.4	24.9	26.1	26.9	20.7	21.9	21.4	22.6	23.4
4H		25.9	27.0	26.6	27.7	28.5	21.6	22.7	22.3	23.4	24.2
6H		27.7	28.7	28.4	29.4	30.3	22.4	23.4	23.1	24.1	25.0
8H		28.7	29.7	29.4	30.4	31.3	22.7	23.7	23.4	24.5	25.3
12H		29.9	30.8	30.6	31.6	32.4	23.1	24.0	23.8	24.7	25.6
4H 2H		21.9	23.0	22.5	23.6	24.5	20.2	21.3	20.8	22.0	22.8
3H		25.0	26.0	25.8	26.7	27.6	22.2	23.2	22.9	23.9	24.8
4H		26.9	27.8	27.6	28.5	29.4	23.2	24.1	24.0	24.8	25.7
6H		28.9	29.7	29.7	30.5	31.4	24.2	25.0	24.9	25.7	26.7
8H		30.1	30.8	30.8	31.6	32.5	24.6	25.3	25.4	26.1	27.1
12H		31.4	32.0	32.1	32.8	33.8	25.0	25.7	25.8	26.5	27.5
8H 4H		27.2	28.0	28.0	28.8	29.7	24.4	25.2	25.2	25.9	26.9
6H		29.6	30.2	30.4	31.0	32.0	25.7	26.3	26.5	27.2	28.1
8H		31.0	31.5	31.8	32.4	33.4	26.4	26.9	27.2	27.7	28.7
12H		32.5	33.0	33.4	33.9	34.9	27.0	27.5	27.8	28.3	29.3
12H 4H		27.3	28.0	28.1	28.8	29.7	24.8	25.5	25.6	26.3	27.3
6H		29.7	30.3	30.6	31.1	32.1	26.4	26.9	27.2	27.8	28.8
8H		31.2	31.7	32.0	32.5	33.6	27.2	27.7	28.0	28.5	29.5
Variations with the observer position at spacings(CIE Pub.117):											
S = 1.0H		+ 0.1 / - 0.1					+ 0.1 / - 0.1				
1.5H		+ 0.2 / - 0.3					+ 0.2 / - 0.2				
2.0H		+ 0.3 / - 0.4					+ 0.2 / - 0.4				

CIE Pub.117, 41.20 lm Total Lamp Luminous Flux Correct (8log(F/F0) = -11.1)
Area: 0.015 m2

C Range: 0 - 360DEG
C Interval: 22.5DEG
Test Speed: HIGH
Temperature:25.3℃
Operators:Cloud
Test Date:2024-09-30

γ Range: 0 - 180DEG
γ Interval: 1.0DEG
Test System:EVERFINE GO-2000B_V1 SYSTEM V2.00.488
Humidity:65.0%
Test Distance:6.360m [K=1.0000]
Remarks: RED

UTILIZATION FACTORS TABLE

Test:U:24.00V I:0.1653A P:3.967W PF:1.000 Freq:0Hz Lamp Flux:41.1975x1 lm		
NAME: SF21-24V-5050-60-RGBW(2700)	TYPE:	WEIGHT:
SPEC.:	DIM.: Length=1m	SERIAL No.:
MFR.:	SUR.:	Shielding Angle:

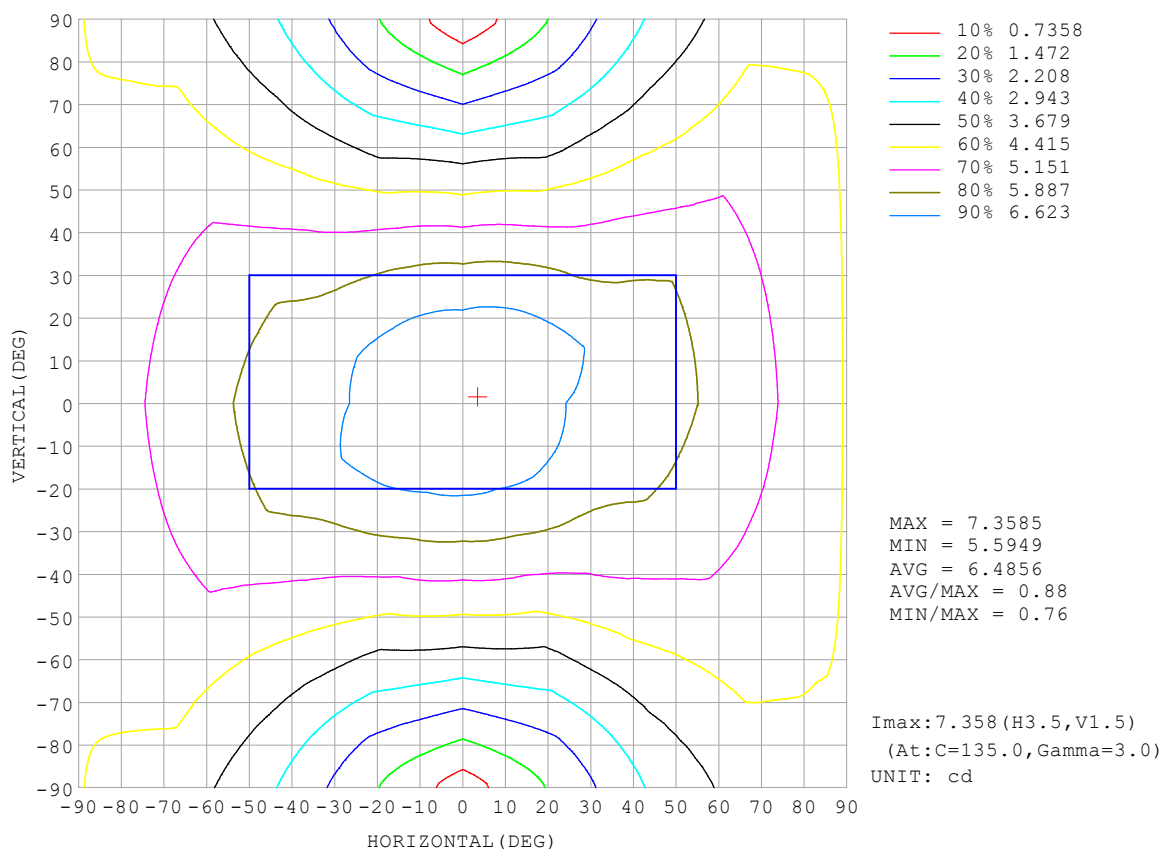
REFLECTANCE										
Ceiling	0.8	0.8	0.8	0.7	0.7	0.7	0.5	0.5	0.5	0
Walls	0.7	0.5	0.3	0.7	0.5	0.3	0.7	0.5	0.3	0
Working plane	0.2	0.2	0.2	0.2	0.2	0.2	0.2	0.2	0.2	0
ROOM INDEX	UTILIZATION FACTORS (PERCENT) $k(RI) \times RCR = 5$									
$k = 0.60$	44	32	25	43	31	24	40	30	24	17
0.80	53	40	32	51	39	31	48	37	30	22
1.00	61	47	39	58	46	38	54	46	36	27
1.25	68	54	46	65	53	44	59	49	42	31
1.50	73	60	51	69	58	50	63	54	47	35
2.00	80	68	60	76	66	58	69	61	54	40
2.50	85	74	66	81	71	63	73	65	59	44
3.00	89	79	71	84	75	68	76	69	63	47
4.00	93	85	78	89	81	75	80	74	69	51
5.00	97	89	83	92	85	79	82	77	73	54
ROOM INDEX	UF (total)									Direct
According to DIN EN 13032-2 2004			Suspended					SHRNOM = 1.25		

C Range: 0 - 360DEG
 C Interval: 22.5DEG
 Test Speed: HIGH
 Temperature: 25.3 °C
 Operators: Cloud
 Test Date: 2024-09-30

γ Range: 0 - 180DEG
 γ Interval: 1.0DEG
 Test System: EVERFINE GO-2000B_V1 SYSTEM V2.00.488
 Humidity: 65.0%
 Test Distance: 6.360m [K=1.0000]
 Remarks: RED

ISOCANDELA DIAGRAM

Test:U:24.00V I:0.1653A P:3.967W PF:1.000 Freq:0Hz Lamp Flux:41.1975x1 lm		
NAME: SF21-24V-5050-60-RGBW(2700)	TYPE:	WEIGHT:
SPEC.:	DIM.: Length=1m	SERIAL No.:
MFR.:	SUR.:	Shielding Angle:

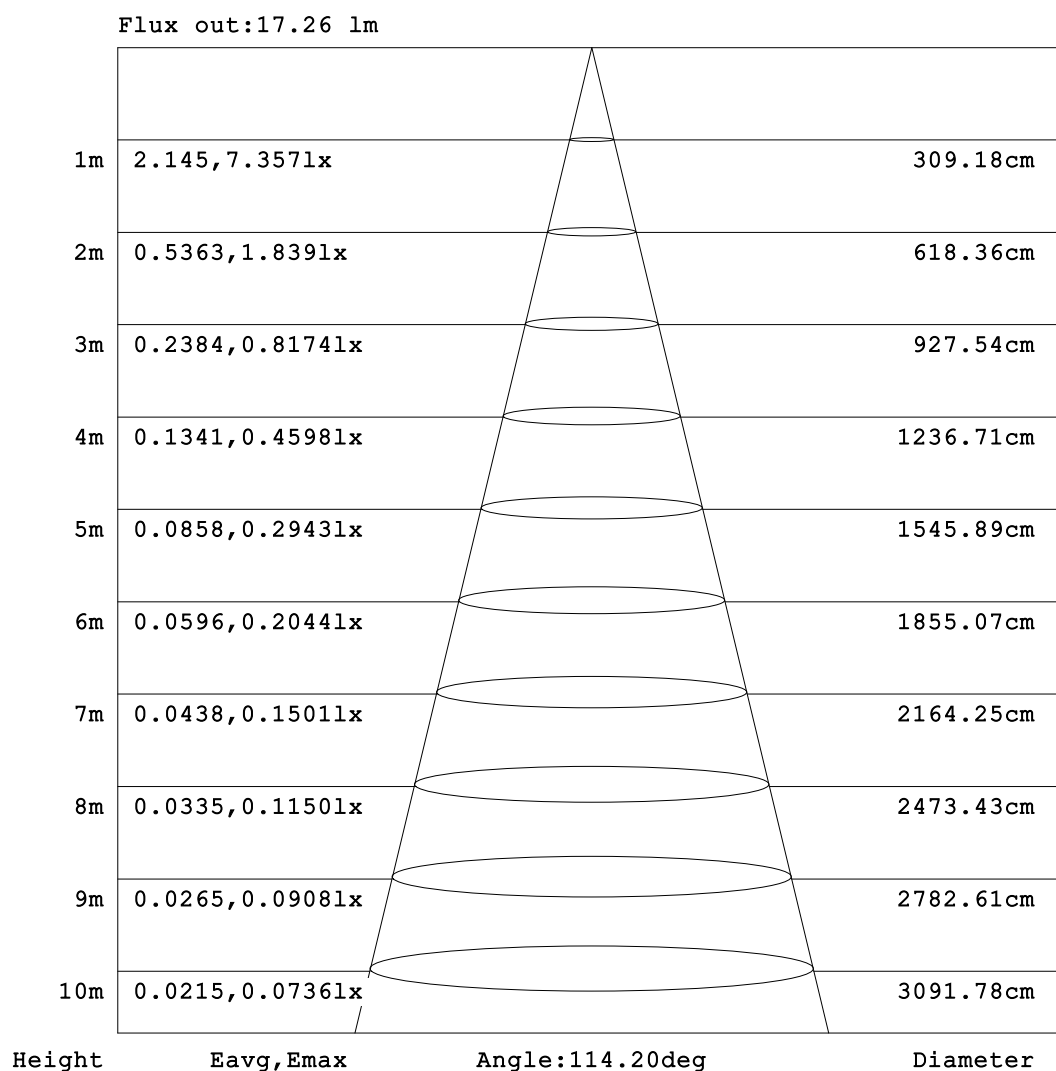


C Range: 0 - 360DEG
C Interval: 22.5DEG
Test Speed: HIGH
Temperature: 25.3°C
Operators: Cloud
Test Date: 2024-09-30

γ Range: 0 - 180DEG
γ Interval: 1.0DEG
Test System: EVERFINE GO-2000B_V1 SYSTEM V2.00.488
Humidity: 65.0%
Test Distance: 6.360m [K=1.0000]
Remarks: RED

AAI Figure

Test:U:24.00V I:0.1653A P:3.967W PF:1.000 Freq:0Hz Lamp Flux:41.1975x1 lm		
NAME: SF21-24V-5050-60-RGBW(2700)	TYPE:	WEIGHT:
SPEC.:	DIM.: Length=1m	SERIAL No.:
MFR.:	SUR.:	Shielding Angle:



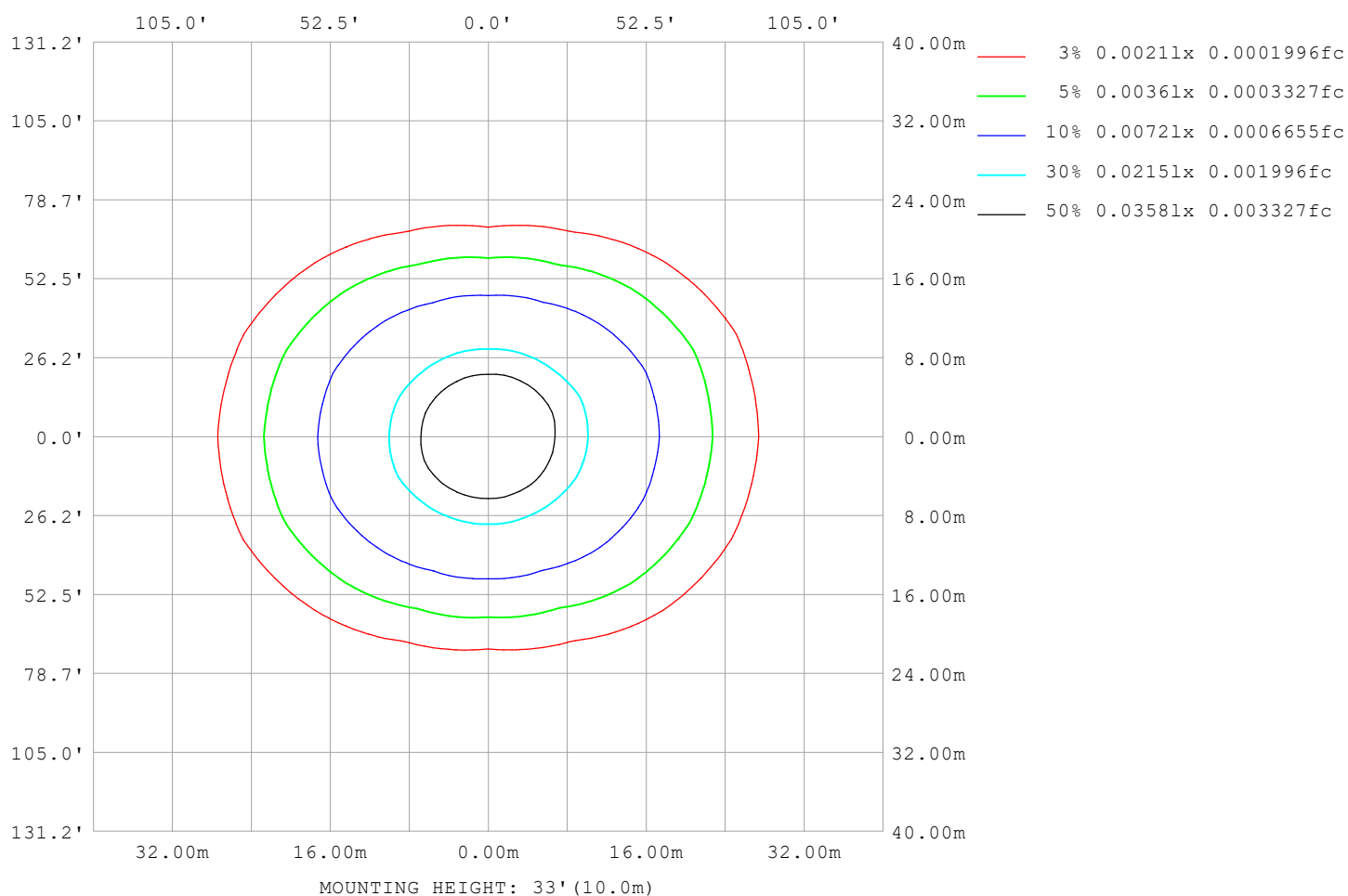
Note:The Curves indicate the illuminated area and the average illumination when the luminaire is at different distance.

C Range: 0 - 360DEG
C Interval: 22.5DEG
Test Speed: HIGH
Temperature:25.3℃
Operators:Cloud
Test Date:2024-09-30

γ Range: 0 - 180DEG
γ Interval: 1.0DEG
Test System:EVERFINE GO-2000B_V1 SYSTEM V2.00.488
Humidity:65.0%
Test Distance:6.360m [K=1.0000]
Remarks: RED

ISOLUX DIAGRAM

Test:U:24.00V I:0.1653A P:3.967W PF:1.000 Freq:0Hz Lamp Flux:41.1975x1 lm		
NAME: SF21-24V-5050-60-RGBW(2700)	TYPE:	WEIGHT:
SPEC.:	DIM.: Length=1m	SERIAL No.:
MFR.:	SUR.:	Shielding Angle:



C Range: 0 - 360DEG
C Interval: 22.5DEG
Test Speed: HIGH
Temperature: 25.3°C
Operators: Cloud
Test Date: 2024-09-30

γ Range: 0 - 180DEG
γ Interval: 1.0DEG
Test System: EVERFINE GO-2000B_V1 SYSTEM V2.00.488
Humidity: 65.0%
Test Distance: 6.360m [K=1.0000]
Remarks: RED

LED Avg.L Report

Test:U:24.00V I:0.1653A P:3.967W PF:1.000 Freq:0Hz Lamp Flux:41.1975x1 lm		
NAME: SF21-24V-5050-60-RGBW(2700)	TYPE:	WEIGHT:
SPEC.:	DIM.: Length=1m	SERIAL No.:
MFR.:	SUR.:	Shielding Angle:

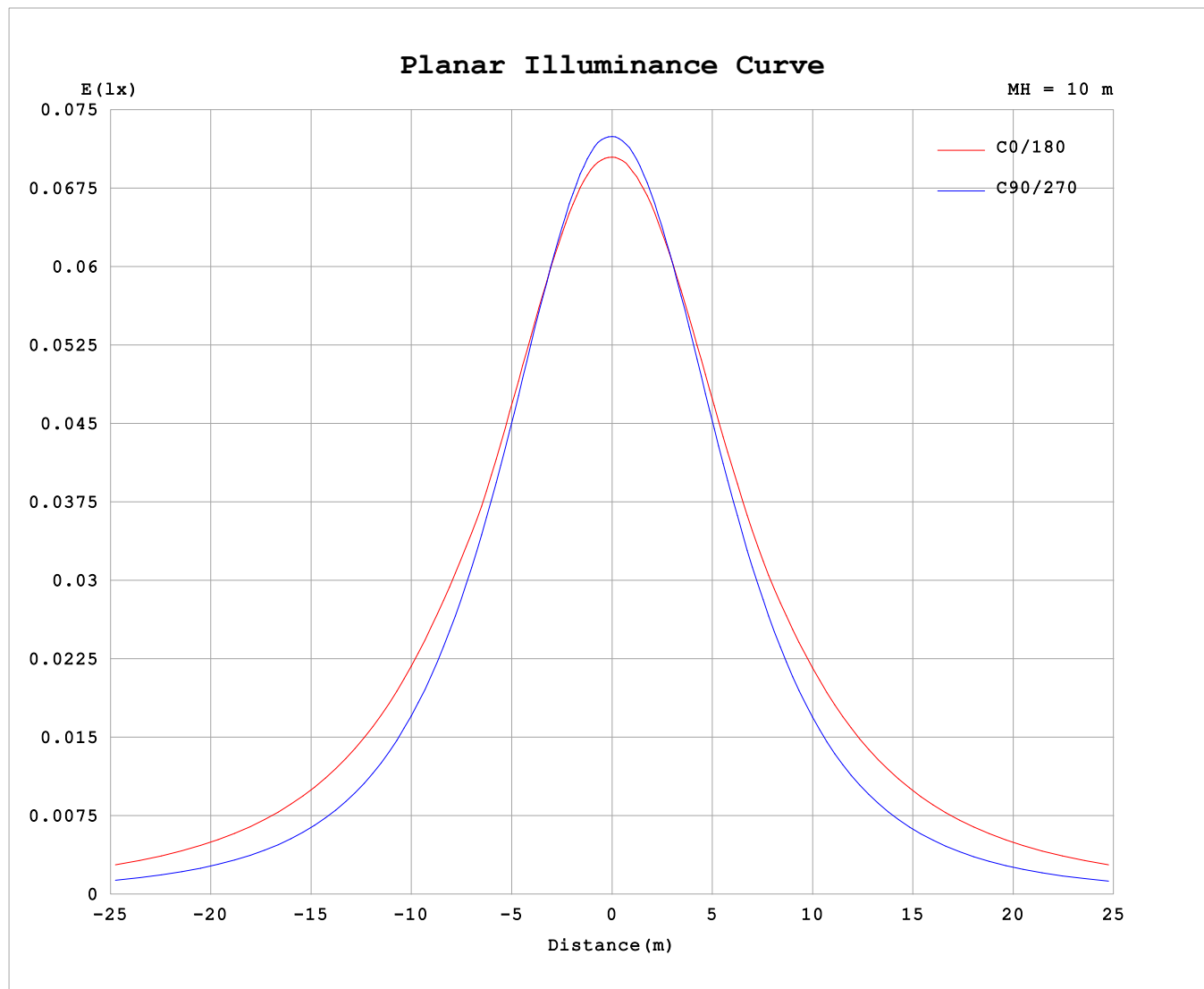
AvgL	cd/m2
L_0~180 (65) av	891
L_0~180 (75) av	1349
L_0~180 (85) av	3638
L_90~270 (65) av	441
L_90~270 (75) av	453
L_90~270 (85) av	560
L_45 (65) av	685
L_45 (75) av	974
L_45 (85) av	2510

Standard: GB/T 29293-2012

C Range: 0 - 360DEG
C Interval: 22.5DEG
Test Speed: HIGH
Temperature:25.3℃
Operators:Cloud
Test Date:2024-09-30

γ Range: 0 - 180DEG
γ Interval: 1.0DEG
Test System:EVERFINE GO-2000B_V1 SYSTEM V2.00.488
Humidity:65.0%
Test Distance:6.360m [K=1.0000]
Remarks: RED

Planar Illuminance Curve



C Range: 0 - 360DEG
C Interval: 22.5DEG
Test Speed: HIGH
Temperature: 25.3°C
Operators: Cloud
Test Date: 2024-09-30

γ Range: 0 - 180DEG
 γ Interval: 1.0DEG
Test System: EVERFINE GO-2000B_V1 SYSTEM V2.00.488
Humidity: 65.0%
Test Distance: 6.360m [K=1.0000]
Remarks: RED

LUMINOUS DISTRIBUTION INTENSITY DATA

Test:U:24.00V I:0.1653A P:3.967W PF:1.000 Freq:0Hz Lamp Flux:41.1975x1 lm																	
NAME: SF21-24V-5050-60-RGBW(2700)									TYPE:						WEIGHT:		
SPEC.:									DIM.: Length=1m						SERIAL No.:		
MFR.:									SUR.:						Shielding Angle:		

Table--1

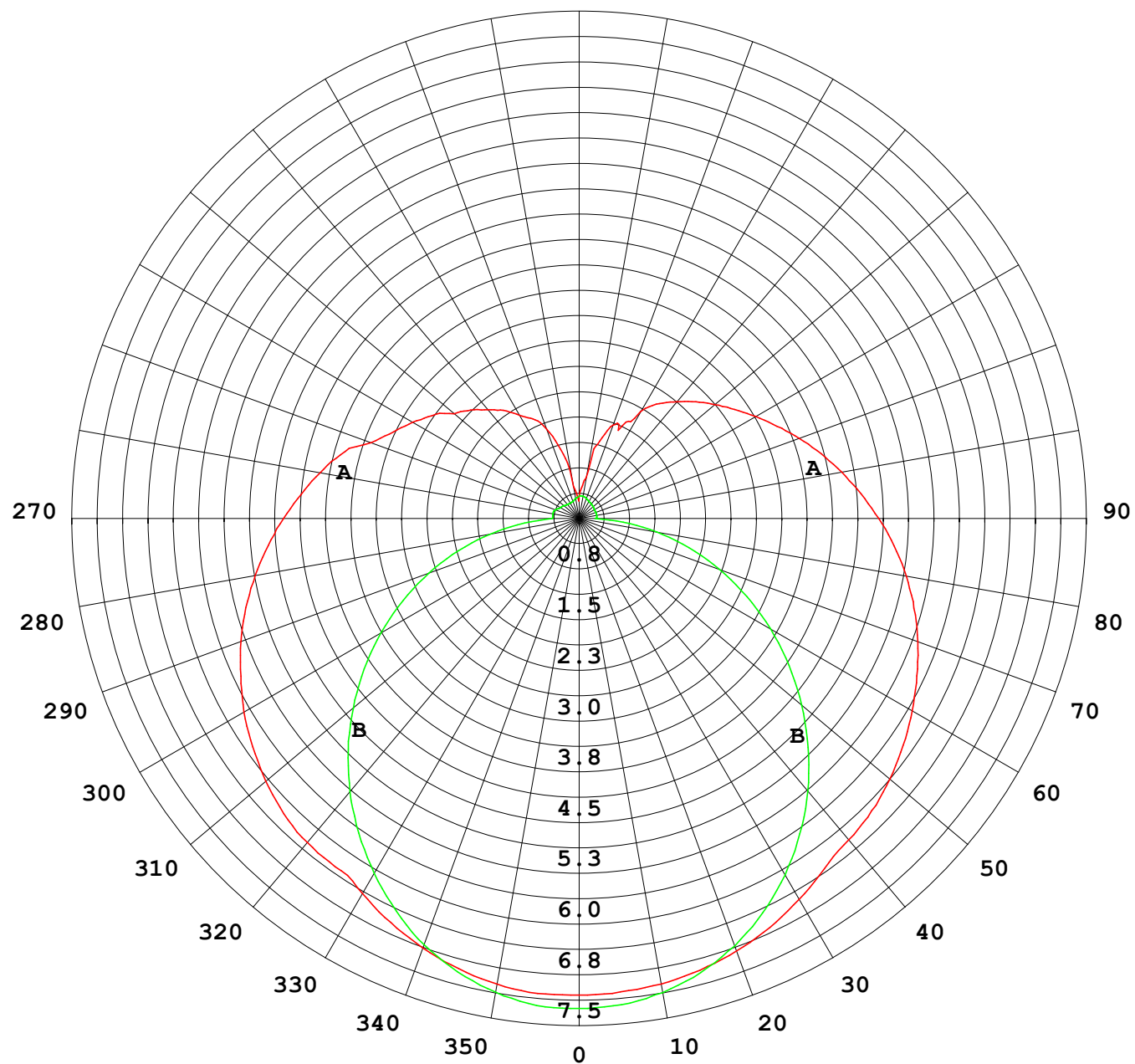
UNIT: cd

C (DEG) γ (DEG)	0	22.5	45	67.5	90	112.5	135	157.5	180	202.5	225	247.5	270	292.5	315	337.5			
0	7.22	7.22	7.22	7.22	7.22	7.22	7.22	7.22	7.22	7.22	7.22	7.22	7.22	7.22	7.22	7.22			
5	7.22	7.20	7.21	7.18	7.20	7.17	7.20	7.19	7.20	7.21	7.19	7.21	7.19	7.22	7.20	7.22			
10	7.16	7.14	7.15	7.08	7.09	7.07	7.12	7.13	7.16	7.16	7.11	7.11	7.09	7.13	7.13	7.18			
15	7.06	7.03	7.01	6.93	6.92	6.90	6.99	7.04	7.08	7.07	7.00	6.96	6.92	6.99	7.01	7.08			
20	6.92	6.88	6.84	6.71	6.68	6.69	6.81	6.90	6.97	6.94	6.84	6.76	6.70	6.79	6.84	6.93			
25	6.75	6.69	6.61	6.44	6.38	6.41	6.59	6.73	6.84	6.79	6.62	6.50	6.41	6.51	6.63	6.76			
30	6.56	6.48	6.34	6.11	6.04	6.09	6.33	6.54	6.66	6.59	6.37	6.18	6.07	6.19	6.36	6.54			
35	6.44	6.24	6.04	5.75	5.66	5.73	6.02	6.31	6.48	6.38	6.08	5.82	5.67	5.83	6.05	6.31			
40	6.40	6.15	5.71	5.36	5.25	5.35	5.71	6.11	6.35	6.20	5.76	5.43	5.24	5.42	5.73	6.20			
45	6.32	6.05	5.40	4.94	4.81	4.93	5.37	5.99	6.26	6.08	5.43	5.00	4.77	4.99	5.39	6.11			
50	6.19	5.90	5.21	4.50	4.34	4.50	5.12	5.81	6.14	5.91	5.19	4.55	4.28	4.54	5.20	5.95			
55	6.03	5.70	4.95	4.05	3.87	4.06	4.84	5.62	5.99	5.73	4.93	4.09	3.77	4.08	4.95	5.77			
60	5.86	5.50	4.67	3.61	3.37	3.62	4.56	5.41	5.82	5.53	4.63	3.63	3.26	3.61	4.67	5.56			
65	5.65	5.29	4.39	3.24	2.86	3.23	4.26	5.21	5.64	5.32	4.35	3.25	2.73	3.21	4.37	5.34			
70	5.45	5.05	4.10	2.87	2.35	2.85	3.96	4.99	5.46	5.10	4.06	2.86	2.20	2.84	4.09	5.11			
75	5.23	4.83	3.83	2.48	1.84	2.47	3.70	4.78	5.25	4.89	3.80	2.50	1.68	2.46	3.81	4.88			
80	4.98	4.58	3.56	2.14	1.32	2.12	3.45	4.54	5.03	4.66	3.54	2.16	1.16	2.12	3.54	4.63			
85	4.73	4.34	3.33	1.86	0.81	1.83	3.21	4.31	4.78	4.41	3.30	1.88	0.65	1.83	3.29	4.39			
90	4.48	4.10	3.11	1.65	0.40	1.61	2.99	4.06	4.54	4.17	3.07	1.67	0.24	1.61	3.06	4.14			
95	4.22	3.87	2.92	1.51	0.39	1.47	2.80	3.83	4.29	3.94	2.88	1.52	0.26	1.46	2.86	3.91			
100	3.98	3.65	2.75	1.19	0.39	1.40	2.64	3.61	4.04	3.70	2.70	1.44	0.26	0.92	2.70	3.69			
105	3.74	3.38	2.37	1.07	0.39	1.37	2.49	3.39	3.79	3.48	2.54	1.42	0.26	0.94	2.35	3.44			
110	3.36	2.99	2.16	1.12	0.37	1.36	2.37	3.17	3.55	3.26	2.41	1.41	0.26	1.00	1.77	3.08			
115	3.11	2.78	2.02	1.10	0.34	1.35	2.26	2.97	3.31	3.05	2.29	1.41	0.26	1.08	1.87	2.76			
120	2.92	2.59	1.92	1.00	0.32	1.32	2.17	2.79	3.09	2.86	2.19	1.40	0.26	1.13	1.81	2.34			
125	2.72	2.43	1.78	0.96	0.31	1.26	2.07	2.62	2.88	2.68	2.10	1.34	0.27	1.13	1.68	2.23			
130	2.47	2.31	1.56	0.93	0.30	1.24	1.98	2.46	2.68	2.52	1.99	1.30	0.27	1.06	1.55	2.10			
135	2.33	2.17	1.41	0.88	0.28	1.23	1.88	2.30	2.50	2.35	1.89	1.29	0.28	0.98	1.45	2.02			
140	2.15	1.98	1.20	0.78	0.27	1.14	1.74	2.13	2.31	2.19	1.74	1.22	0.28	0.90	1.31	1.86			
145	2.00	1.55	1.09	0.69	0.26	1.07	1.62	1.96	2.12	2.01	1.61	1.13	0.29	0.80	1.20	1.65			
150	1.80	1.22	1.00	0.60	0.26	1.00	1.52	1.75	1.87	1.80	1.52	1.09	0.29	0.70	1.07	1.46			
155	1.67	1.07	0.84	0.57	0.27	0.86	1.36	1.60	1.55	1.65	1.38	0.95	0.30	0.63	0.91	1.22			
160	1.44	0.86	0.72	0.55	0.27	0.75	1.20	1.42	1.51	1.47	1.19	0.83	0.32	0.60	0.75	0.98			
165	1.08	0.63	0.68	0.51	0.29	0.64	1.05	1.19	1.21	1.23	1.06	0.71	0.32	0.55	0.68	0.75			
170	0.49	0.49	0.59	0.46	0.30	0.54	0.82	0.97	0.63	1.03	0.82	0.60	0.33	0.50	0.58	0.58			
175	0.35	0.41	0.47	0.40	0.31	0.45	0.60	0.67	0.48	0.71	0.59	0.49	0.34	0.44	0.46	0.45			
180	0.32	0.35	0.34	0.34	0.33	0.33	0.35	0.35	0.33	0.36	0.34	0.34	0.34	0.35	0.34	0.34			

C Range: 0 - 360DEG
C Interval: 22.5DEG
Test Speed: HIGH
Temperature:25.3℃
Operators:Cloud
Test Date:2024-09-30

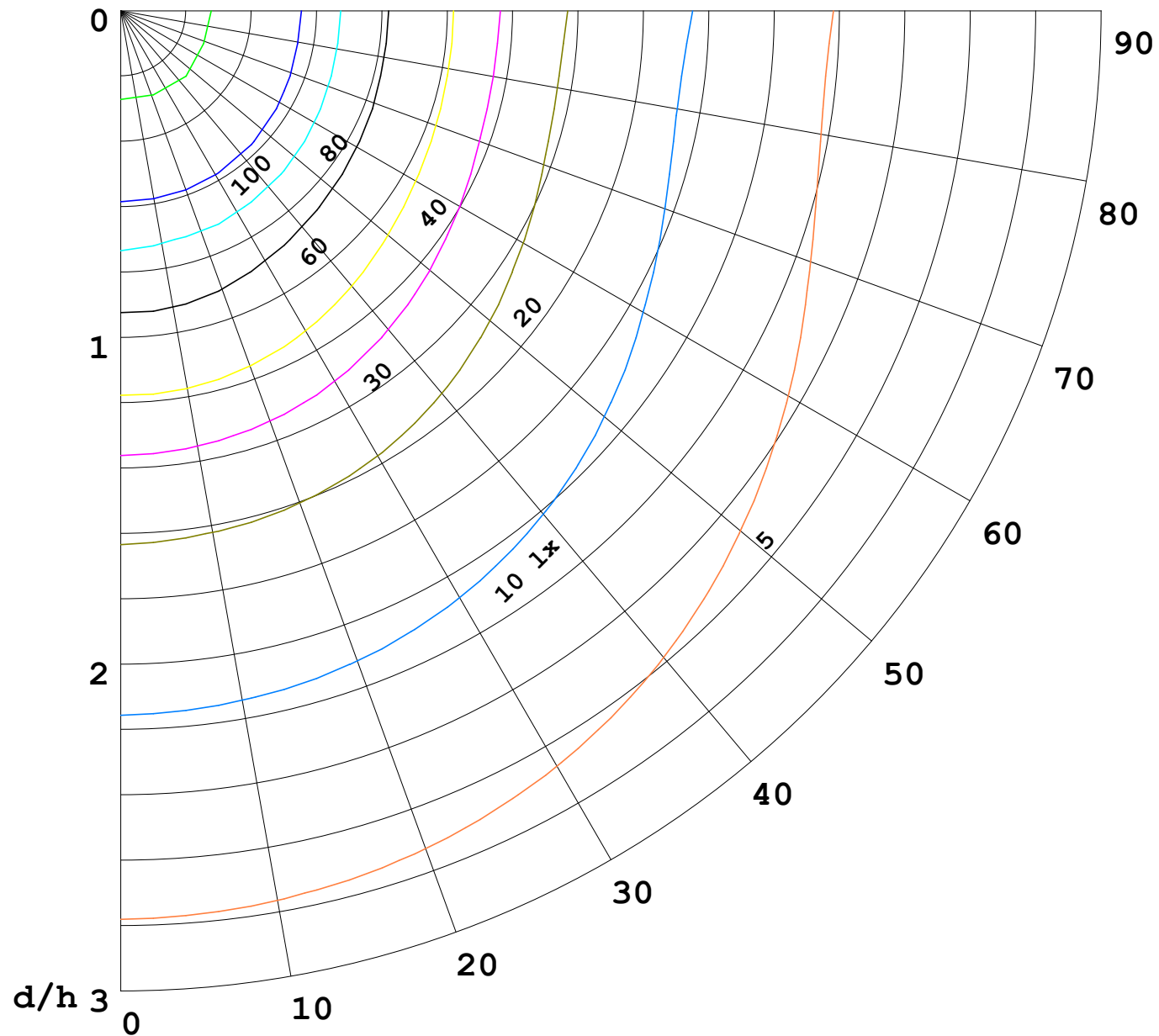
γ Range: 0 - 180DEG
γ Interval: 1.0DEG
Test System:EVERFINE GO-2000B_V1 SYSTEM V2.00.488
Humidity:65.0%
Test Distance:6.360m [K=1.0000]
Remarks: RED

I (cd)



1000 lm

$\kappa = 1$



F = 1000 lm
 K = 0.7
 Hcc = 0.8 m
 Hfc = 0.0 m
 Eave = 100 lx

	Pcc	Pw	Pfc
—————	70	50	30
—————	50	30	20

