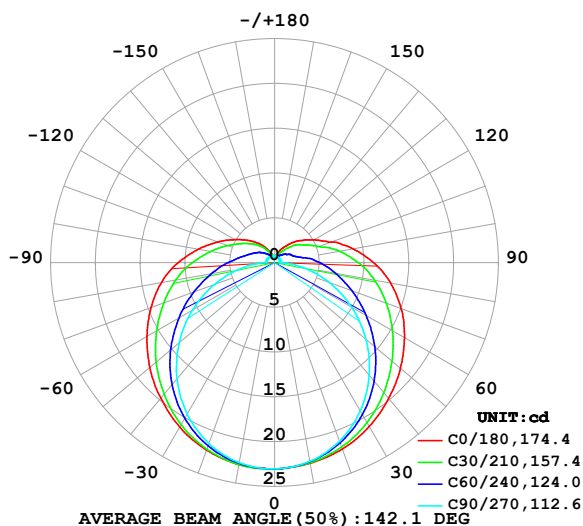


LUMINAIRE PHOTOMETRIC TEST REPORT

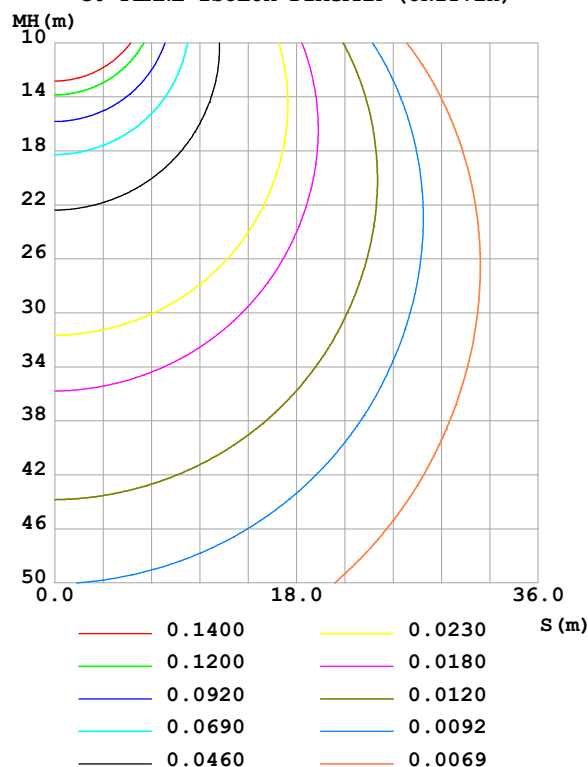
Test:U:24.00V I:0.1719A P:4.126W PF:1.000 Freq:0Hz Lamp Flux:109.051x1 lm		
NAME: SF21-24V-5050-60-RGBW(5000K)-G	TYPE:	WEIGHT:
SPEC.:	DIM.: Length=1m	SERIAL No.:
MFR.: Olym pia lighting	SUR.:	Shielding Angle:

DATA OF LAMP		PHOTOMETRIC DATA				Eff: 26.43 lm/W
MODEL	5050	I _{max} (cd)	23.05	S/MH(C0/180)	1.38	
NOMINAL POWER(W)		LOR(%)	100.0	S/MH(C90/270)	1.26	
RATED VOLTAGE(V)	24	TOTAL FLUX(lm)	109.06	η UP,DN(C0-180)	9.3,40.1	
NOMINAL FLUX(lm)	109.051	CIE CLASS	SEMI-D.	η UP,DN(C180-360)	9.7,40.9	
LAMPS INSIDE	1	η up (%)	19.0	CIBSE SHR NOM	1.50	
TEST VOLTAGE(V)		η down (%)	81.0	CIBSE SHR MAX	1.55	

LUMINOUS INTENSITY DISTRIBUTION DIAGRAM



C0 PLANE ISOLUX DIAGRAM (UNIT:lx)



C Range: 0 - 360DEG
C Interval: 30.0DEG
Test Speed: HIGH
Temperature:25.3℃
Operators:
Test Date:2025-03-07

γ Range: 0 - 180DEG
γ Interval: 1.0DEG
Test System:EVERFINE GO-2000B_V1 SYSTEM V2.00.488
Humidity:65.0%
Test Distance:6.360m [K=1.0000]
Remarks:

ZONAL FLUX DIAGRAM

ZONAL FLUX DIAGRAM:

γ	C0	C45	C90	C135	C180	C225	C270	C315	γ	Φ zone	Φ total	%lum, lamp
10	22.76	22.64	22.55	22.76	22.90	22.84	22.68	22.72	0- 10	2.185	2.185	2,2
20	22.14	21.66	21.22	21.81	22.27	21.97	21.49	21.84	10- 20	6.313	8.498	7.79,7.79
30	21.13	20.12	19.13	20.25	21.21	20.49	19.54	20.41	20- 30	9.743	18.24	16.7,16.7
40	19.81	18.12	16.43	18.21	19.77	18.50	16.96	18.50	30- 40	12.12	30.36	27.8,27.8
50	18.35	15.86	13.31	15.92	18.20	16.22	13.92	16.30	40- 50	13.28	43.64	40,40
60	16.75	13.49	9.920	13.49	16.47	13.77	10.58	13.97	50- 60	13.27	56.91	52.2,52.2
70	15.05	11.23	6.468	11.15	14.68	11.38	7.135	11.73	60- 70	12.29	69.20	63.5,63.5
80	13.14	9.123	3.189	9.025	12.83	9.192	3.827	9.610	70- 80	10.61	79.81	73.2,73.2
90	11.06	7.195	0.7662	7.071	10.77	7.200	0.9982	7.648	80- 90	8.548	88.35	81,81
100	8.914	5.323	0.5778	5.420	8.662	5.517	0.9627	5.776	90-100	6.581	94.93	87,87.1
110	6.740	3.769	0.6153	4.161	6.780	4.234	0.9589	4.215	100-110	4.872	99.81	91.5,91.5
120	5.109	2.940	0.6500	3.209	5.146	3.271	0.9389	3.236	110-120	3.500	103.3	94.7,94.7
130	3.863	2.295	0.6707	2.410	3.875	2.490	0.8926	2.461	120-130	2.455	105.8	97,97
140	2.835	1.590	0.6847	1.737	2.820	1.816	0.8320	1.672	130-140	1.600	107.4	98.4,98.5
150	1.934	1.085	0.7077	1.203	1.840	1.229	0.7858	1.127	140-150	0.9230	108.3	99.3,99.3
160	1.228	0.8400	0.7199	0.8469	1.100	0.8807	0.7441	0.8197	150-160	0.4795	108.8	99.7,99.7
170	0.7208	0.7312	0.7212	0.7246	0.7369	0.7390	0.7245	0.7322	160-170	0.2251	109.0	99.9,99.9
180	0.7090	0.7232	0.7222	0.7186	0.7119	0.7304	0.7222	0.7287	170-180	0.0693	109.1	100,100
DEG	LUMINOUS INTENSITY:cd									UNIT:lm		

Conical surface Flux(90deg): 36.93 lm

%lum = 33.9%

%lamp = 33.9%

Conical surface Flux(130deg): 63.23 lm

%lum = 58.0%

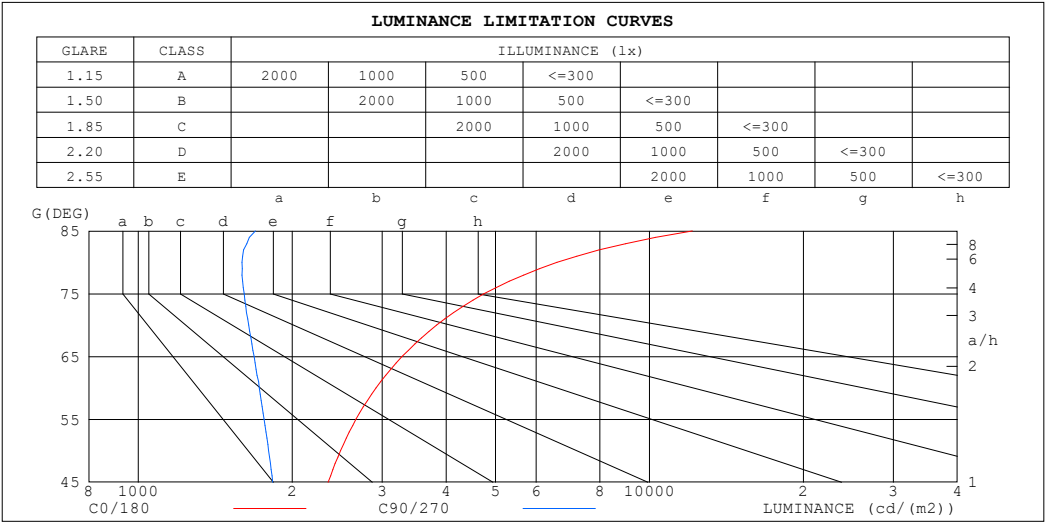
%lamp = 58.0%

C Range: 0 - 360DEG
 C Interval: 30.0DEG
 Test Speed: HIGH
 Temperature:25.3°C
 Operators:
 Test Date:2025-03-07

γ Range: 0 - 180DEG
 γ Interval: 1.0DEG
 Test System:EVERFINE GO-2000B_V1 SYSTEM V2.00.488
 Humidity:65.0%
 Test Distance:6.360m [K=1.0000]
 Remarks:

LUMINANCE LIMITATION CURVES

Test:U:24.00V I:0.1719A P:4.126W PF:1.000 Freq:0Hz Lamp Flux:109.051x1 lm		
NAME: SF21-24V-5050-60-RGBW(5000K) -G	TYPE:	WEIGHT:
SPEC.:	DIM.: Length=1m	SERIAL No.:
MFR.: OLympia lighting	SUR.:	Shielding Angle:



LUMINANCE cd/(m2)		
G (DEG)	C0/180	C90/270
85	12131	1693
80	6590	1596
75	4745	1612
70	3831	1643
65	3282	1684
60	2918	1724
55	2666	1762
50	2486	1798
45	2352	1832

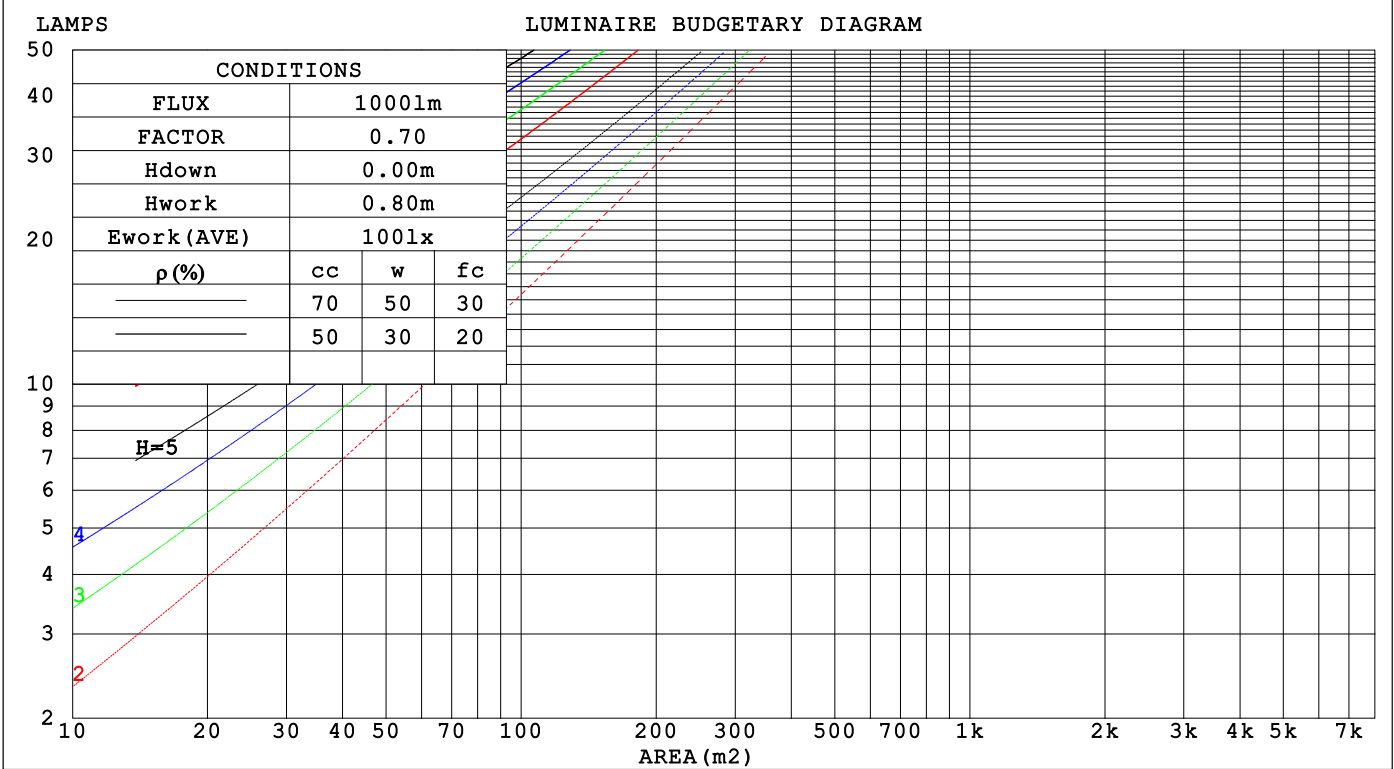
C Range: 0 - 360DEG
C Interval: 30.0DEG
Test Speed: HIGH
Temperature:25.3℃
Operators:
Test Date:2025-03-07

γ Range: 0 - 180DEG
γ Interval: 1.0DEG
Test System:EVERFINE GO-2000B_V1 SYSTEM V2.00.488
Humidity:65.0%
Test Distance:6.360m [K=1.0000]
Remarks:

CU AND LUMINAIRE BUDGETARY ESTIMATE DIAGRAM

Test:U:24.00V I:0.1719A P:4.126W PF:1.000 Freq:0Hz		
Lamp Flux:109.051x1 lm		
NAME: SF21-24V-5050-60-RGBW(5000K)-G	TYPE:	WEIGHT:
SPEC.:	DIM.: Length=1m	SERIAL No.:
MFR.: OLYMPIA lighting	SUR.:	Shielding Angle:

pcc	80%			70%			50%			30%			10%			0
p _w	50%	30%	10%	50%	30%	10%	50%	30%	10%	50%	30%	10%	50%	30%	10%	0
p _{fc}	20%			20%			20%			20%			20%			0
RCR	RCR:Room Cavity Ratio			Coefficients of Utilization(CU)												
0.0	1.15	1.15	1.15	1.10	1.10	1.10	1.01	1.01	1.01	.92	.92	.92	.85	.85	.85	.81
1.0	.95	.90	.85	.91	.86	.82	.83	.79	.76	.76	.73	.70	.69	.67	.64	.61
2.0	.81	.73	.67	.78	.70	.64	.71	.65	.60	.65	.60	.56	.59	.55	.52	.48
3.0	.70	.61	.54	.67	.59	.52	.62	.55	.49	.56	.51	.46	.51	.47	.43	.39
4.0	.62	.52	.45	.59	.50	.44	.54	.47	.41	.50	.43	.38	.45	.40	.36	.33
5.0	.55	.45	.38	.53	.44	.37	.48	.41	.35	.44	.38	.33	.40	.35	.31	.28
6.0	.49	.40	.33	.47	.38	.32	.43	.36	.30	.40	.33	.29	.37	.31	.27	.24
7.0	.44	.35	.29	.43	.34	.28	.39	.32	.27	.36	.30	.25	.33	.28	.24	.21
8.0	.40	.31	.25	.39	.30	.25	.36	.29	.24	.33	.27	.22	.30	.25	.21	.19
9.0	.37	.28	.23	.35	.28	.22	.33	.26	.21	.30	.24	.20	.28	.23	.19	.17
10.0	.34	.26	.20	.33	.25	.20	.30	.24	.19	.28	.22	.18	.26	.21	.17	.15



C Range: 0 - 360DEG
C Interval: 30.0DEG
Test Speed: HIGH
Temperature:25.3℃
Operators:
Test Date:2025-03-07

γ Range: 0 - 180DEG
γ Interval: 1.0DEG
Test System:EVERFINE GO-2000B_V1 SYSTEM V2.00.488
Humidity:65.0%
Test Distance:6.360m [K=1.0000]
Remarks:

WEC AND CCEC

Test:U:24.00V I:0.1719A P:4.126W PF:1.000 Freq:0Hz Lamp Flux:109.051x1 lm		
NAME: SF21-24V-5050-60-RGBW(5000K)-G	TYPE:	WEIGHT:
SPEC.:	DIM.: Length=1m	SERIAL No.:
MFR.: OLympia lighting	SUR.:	Shielding Angle:

pcc	80%			70%			50%			30%			10%			0														
pw	50%	30%	10%	50%	30%	10%	50%	30%	10%	50%	30%	10%	50%	30%	10%	0														
pfc	20%			20%			20%			20%			20%			0														
RCR	RCR:Room Cavity Ratio															Wall Exitance Coefficients(WEC)														
0.0																														
1.0	.390	.222	.070	.377	.215	.068	.353	.202	.065	.330	.190	.061	.310	.179	.058															
2.0	.336	.184	.057	.324	.179	.055	.302	.168	.052	.282	.158	.049	.263	.149	.047															
3.0	.298	.159	.047	.287	.154	.046	.267	.145	.044	.249	.136	.042	.232	.128	.040															
4.0	.268	.139	.041	.258	.135	.040	.240	.127	.038	.223	.120	.036	.207	.113	.034															
5.0	.243	.124	.036	.234	.120	.035	.218	.113	.033	.202	.107	.032	.188	.101	.030															
6.0	.222	.112	.032	.215	.108	.031	.200	.102	.030	.185	.096	.028	.172	.091	.027															
7.0	.205	.101	.029	.198	.099	.028	.184	.093	.027	.171	.088	.026	.159	.083	.024															
8.0	.190	.093	.026	.183	.090	.026	.171	.085	.024	.159	.081	.023	.148	.076	.022															
9.0	.177	.086	.024	.171	.083	.023	.159	.079	.022	.148	.074	.021	.138	.070	.020															
10.0	.166	.079	.022	.160	.077	.022	.149	.073	.021	.139	.069	.020	.130	.065	.019															

pcc	80%			70%			50%			30%			10%			0
pw	50%	30%	10%	50%	30%	10%	50%	30%	10%	50%	30%	10%	50%	30%	10%	0
pfc	20%			20%			20%			20%			20%			0
RCR	RCR:Room Cavity Ratio						Ceiling Cavity Exitance Coefficients (CCEC)									
0.0	.335	.335	.335	.286	.286	.286	.196	.196	.196	.112	.112	.112	.036	.036	.036	
1.0	.332	.301	.274	.284	.259	.236	.194	.178	.163	.112	.103	.095	.036	.033	.031	
2.0	.325	.279	.239	.278	.240	.207	.191	.166	.144	.110	.096	.085	.035	.031	.028	
3.0	.317	.262	.218	.272	.226	.189	.187	.157	.133	.108	.092	.078	.035	.030	.026	
4.0	.310	.250	.204	.266	.216	.177	.183	.150	.125	.106	.088	.074	.034	.029	.024	
5.0	.302	.240	.194	.259	.208	.169	.179	.145	.119	.103	.085	.071	.033	.028	.023	
6.0	.294	.232	.187	.253	.201	.163	.175	.141	.115	.101	.083	.069	.033	.027	.023	
7.0	.287	.225	.182	.247	.195	.159	.171	.137	.112	.099	.081	.067	.032	.026	.022	
8.0	.281	.220	.178	.242	.191	.155	.167	.134	.110	.097	.079	.066	.031	.026	.022	
9.0	.274	.215	.175	.236	.187	.153	.164	.131	.108	.095	.077	.065	.031	.025	.021	
10.0	.269	.211	.173	.231	.183	.151	.161	.129	.107	.094	.076	.064	.030	.025	.021	

C Range: 0 - 360DEG
C Interval: 30.0DEG
Test Speed: HIGH
Temperature:25.3℃
Operators:
Test Date:2025-03-07

γ Range: 0 - 180DEG
γ Interval: 1.0DEG
Test System:EVERFINE GO-2000B_V1 SYSTEM V2.00.488
Humidity:65.0%
Test Distance:6.360m [K=1.0000]
Remarks:

UGR(Unified Glare Rating) Table

Test:U:24.00V I:0.1719A P:4.126W PF:1.000 Freq:0Hz Lamp Flux:109.05lx1 lm										
NAME: SF21-24V-5050-60-RGBW(5000K)-G					TYPE:			WEIGHT:		
SPEC.:					DIM.: Length=1m			SERIAL No.:		
MFR.: OLympia lighting					SUR.:			Shielding Angle:		
ceiling/cavity	0.7	0.7	0.5	0.5	0.3	0.7	0.7	0.5	0.5	0.3
walls	0.5	0.3	0.5	0.3	0.3	0.5	0.3	0.5	0.3	0.3
working plane	0.2	0.2	0.2	0.2	0.2	0.2	0.2	0.2	0.2	0.2
Room dimensions	Viewed crosswise					Viewed endwise				
x = 2H y = 2H	23.6	25.0	24.1	25.5	26.1	21.5	22.9	22.0	23.4	24.0
3H	26.4	27.6	26.9	28.2	28.8	23.2	24.4	23.7	25.0	25.6
4H	27.9	29.1	28.5	29.7	30.3	23.9	25.1	24.5	25.7	26.3
6H	29.6	30.8	30.2	31.3	32.0	24.5	25.7	25.1	26.2	26.9
8H	30.6	31.7	31.2	32.3	32.9	24.8	25.9	25.4	26.5	27.1
12H	31.7	32.7	32.3	33.3	34.0	25.0	26.0	25.6	26.6	27.3
4H 2H	24.2	25.4	24.7	25.9	26.6	22.6	23.8	23.2	24.4	25.0
3H	27.2	28.2	27.8	28.8	29.5	24.5	25.6	25.1	26.2	26.9
4H	28.9	29.9	29.5	30.5	31.2	25.5	26.4	26.1	27.1	27.8
6H	30.8	31.7	31.5	32.4	33.1	26.3	27.2	27.0	27.8	28.6
8H	31.9	32.7	32.6	33.4	34.2	26.6	27.5	27.3	28.1	28.9
12H	33.1	33.9	33.8	34.6	35.4	26.9	27.7	27.6	28.4	29.2
8H 4H	29.3	30.1	29.9	30.7	31.5	26.5	27.3	27.2	28.0	28.8
6H	31.5	32.2	32.2	32.9	33.7	27.7	28.4	28.4	29.1	29.9
8H	32.8	33.4	33.5	34.1	35.0	28.3	28.9	29.0	29.6	30.5
12H	34.3	34.8	35.0	35.5	36.4	28.8	29.3	29.5	30.1	30.9
12H 4H	29.3	30.0	30.0	30.7	31.5	26.9	27.6	27.6	28.3	29.1
6H	31.6	32.2	32.3	33.0	33.8	28.3	28.9	29.0	29.6	30.5
8H	33.0	33.6	33.8	34.3	35.2	29.0	29.6	29.8	30.3	31.2
Variations with the observer position at spacings(CIE Pub.117):										
S = 1.0H	+ 0.1 / - 0.1					+ 0.1 / - 0.1				
1.5H	+ 0.2 / - 0.2					+ 0.2 / - 0.3				
2.0H	+ 0.2 / - 0.3					+ 0.2 / - 0.4				

CIE Pub.117, 109.1 lm Total Lamp Luminous Flux Correct (8log(F/F0) = -7.7)
Area: 0.0115 m2

C Range: 0 - 360DEG
C Interval: 30.0DEG
Test Speed: HIGH
Temperature:25.3℃
Operators:
Test Date:2025-03-07

γ Range: 0 - 180DEG
γ Interval: 1.0DEG
Test System:EVERFINE GO-2000B_V1 SYSTEM V2.00.488
Humidity:65.0%
Test Distance:6.360m [K=1.0000]
Remarks:

UTILIZATION FACTORS TABLE

Test:U:24.00V I:0.1719A P:4.126W PF:1.000 Freq:0Hz Lamp Flux:109.051x1 lm		
NAME: SF21-24V-5050-60-RGBW(5000K) -G	TYPE:	WEIGHT:
SPEC.:	DIM.: Length=1m	SERIAL No.:
MFR.: OLympia lighting	SUR.:	Shielding Angle:

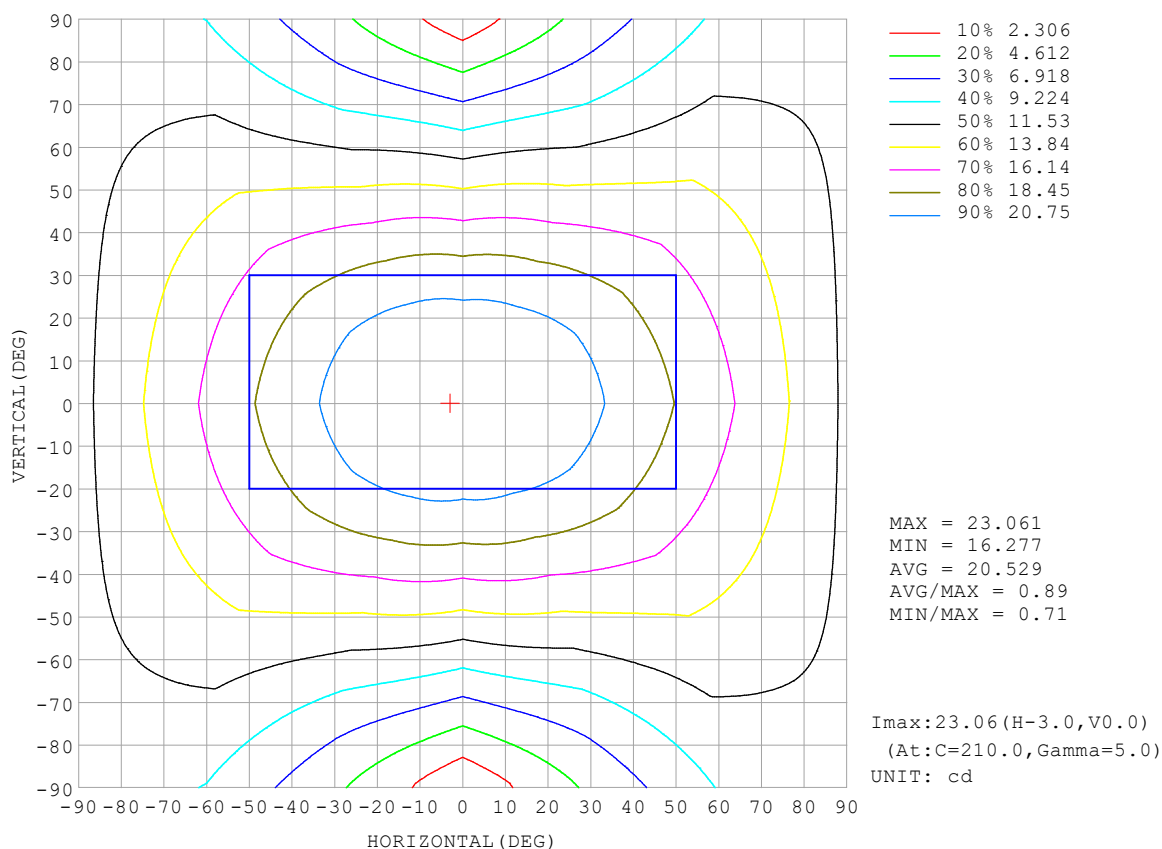
REFLECTANCE										
Ceiling	0.8	0.8	0.8	0.7	0.7	0.7	0.5	0.5	0.5	0
Walls	0.7	0.5	0.3	0.7	0.5	0.3	0.7	0.5	0.3	0
Working plane	0.2	0.2	0.2	0.2	0.2	0.2	0.2	0.2	0.2	0
ROOM INDEX	UTILIZATION FACTORS (PERCENT) $k(RI) \times RCR = 5$									
$k = 0.60$	47	35	28	46	34	27	44	33	27	20
0.80	56	43	35	55	43	35	52	41	34	26
1.00	64	51	43	62	50	42	58	50	41	32
1.25	71	58	50	69	57	49	64	54	47	37
1.50	76	64	55	73	62	54	68	59	52	41
2.00	83	72	64	80	70	62	74	66	59	47
2.50	88	77	69	84	75	68	78	70	64	51
3.00	92	82	75	88	79	72	81	74	68	55
4.00	96	88	82	92	85	79	85	79	74	59
5.00	99	92	86	95	89	83	88	82	78	63
ROOM INDEX	UF (total)									Direct
According to DIN EN 13032-2 2004			Suspended					SHRNOM = 1.25		

C Range: 0 - 360DEG
 C Interval: 30.0DEG
 Test Speed: HIGH
 Temperature: 25.3°C
 Operators:
 Test Date: 2025-03-07

γ Range: 0 - 180DEG
 γ Interval: 1.0DEG
 Test System: EVERFINE GO-2000B_V1 SYSTEM V2.00.488
 Humidity: 65.0%
 Test Distance: 6.360m [K=1.0000]
 Remarks:

ISOCANDELA DIAGRAM

Test:U:24.00V I:0.1719A P:4.126W PF:1.000 Freq:0Hz Lamp Flux:109.05lx1 lm		
NAME: SF21-24V-5050-60-RGBW(5000K)-G	TYPE:	WEIGHT:
SPEC.:	DIM.: Length=1m	SERIAL No.:
MFR.: OLympia lighting	SUR.:	Shielding Angle:

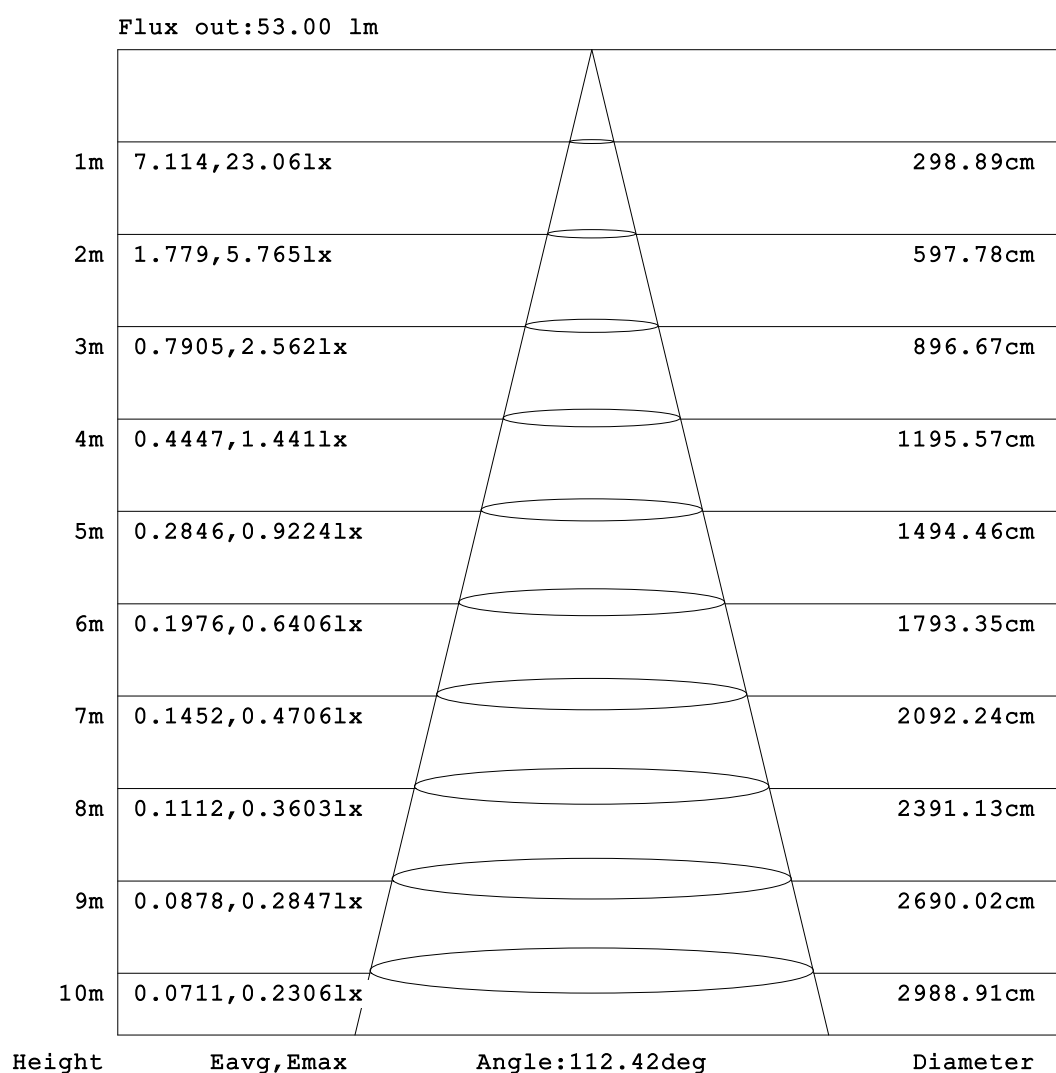


C Range: 0 - 360DEG
C Interval: 30.0DEG
Test Speed: HIGH
Temperature:25.3℃
Operators:
Test Date:2025-03-07

γ Range: 0 - 180DEG
γ Interval: 1.0DEG
Test System:EVERFINE GO-2000B_V1 SYSTEM V2.00.488
Humidity:65.0%
Test Distance:6.360m [K=1.0000]
Remarks:

AAI Figure

Test:U:24.00V I:0.1719A P:4.126W PF:1.000 Freq:0Hz Lamp Flux:109.051lx1 lm		
NAME: SF21-24V-5050-60-RGBW(5000K)-G	TYPE:	WEIGHT:
SPEC.:	DIM.: Length=1m	SERIAL No.:
MFR.: OLympia lighting	SUR.:	Shielding Angle:



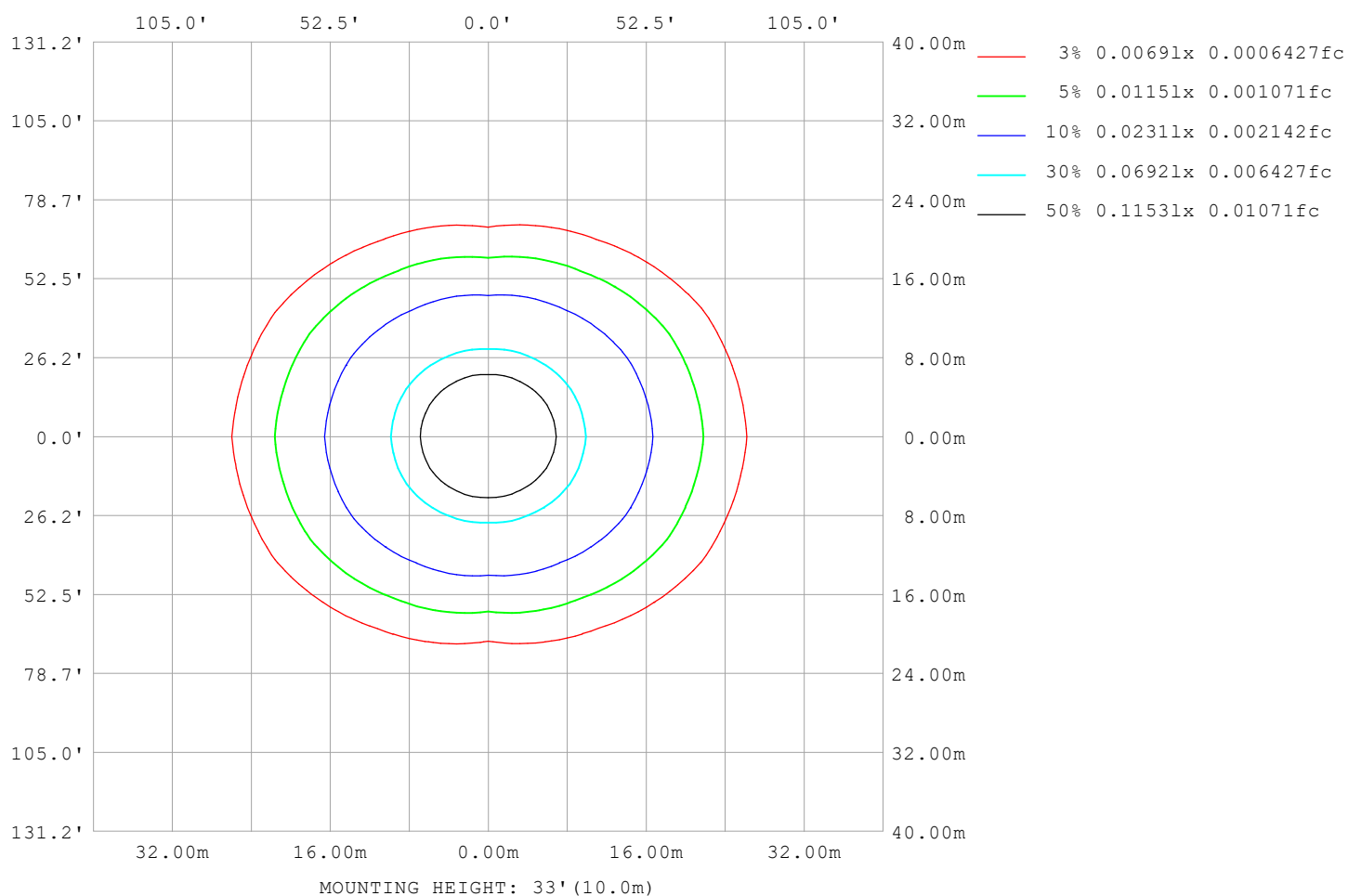
Note:The Curves indicate the illuminated area and the average illumination when the luminaire is at different distance.

C Range: 0 - 360DEG
C Interval: 30.0DEG
Test Speed: HIGH
Temperature:25.3℃
Operators:
Test Date:2025-03-07

γ Range: 0 - 180DEG
γ Interval: 1.0DEG
Test System:EVERFINE GO-2000B_V1 SYSTEM V2.00.488
Humidity:65.0%
Test Distance:6.360m [K=1.0000]
Remarks:

ISOLUX DIAGRAM

Test:U:24.00V I:0.1719A P:4.126W PF:1.000 Freq:0Hz Lamp Flux:109.05lx 1m		
NAME: SF21-24V-5050-60-RGBW(5000K)-G	TYPE:	WEIGHT:
SPEC.:	DIM.: Length=1m	SERIAL No.:
MFR.: OLympia lighting	SUR.:	Shielding Angle:



C Range: 0 - 360DEG
C Interval: 30.0DEG
Test Speed: HIGH
Temperature: 25.3°C
Operators:
Test Date: 2025-03-07

γ Range: 0 - 180DEG
γ Interval: 1.0DEG
Test System: EVERFINE GO-2000B_V1 SYSTEM V2.00.488
Humidity: 65.0%
Test Distance: 6.360m [K=1.0000]
Remarks:

LED Avg.L Report

Test:U:24.00V I:0.1719A P:4.126W PF:1.000 Freq:0Hz Lamp Flux:109.051x1 lm		
NAME: SF21-24V-5050-60-RGBW(5000K)-G	TYPE:	WEIGHT:
SPEC.:	DIM.: Length=1m	SERIAL No.:
MFR.: OLympia lighting	SUR.:	Shielding Angle:

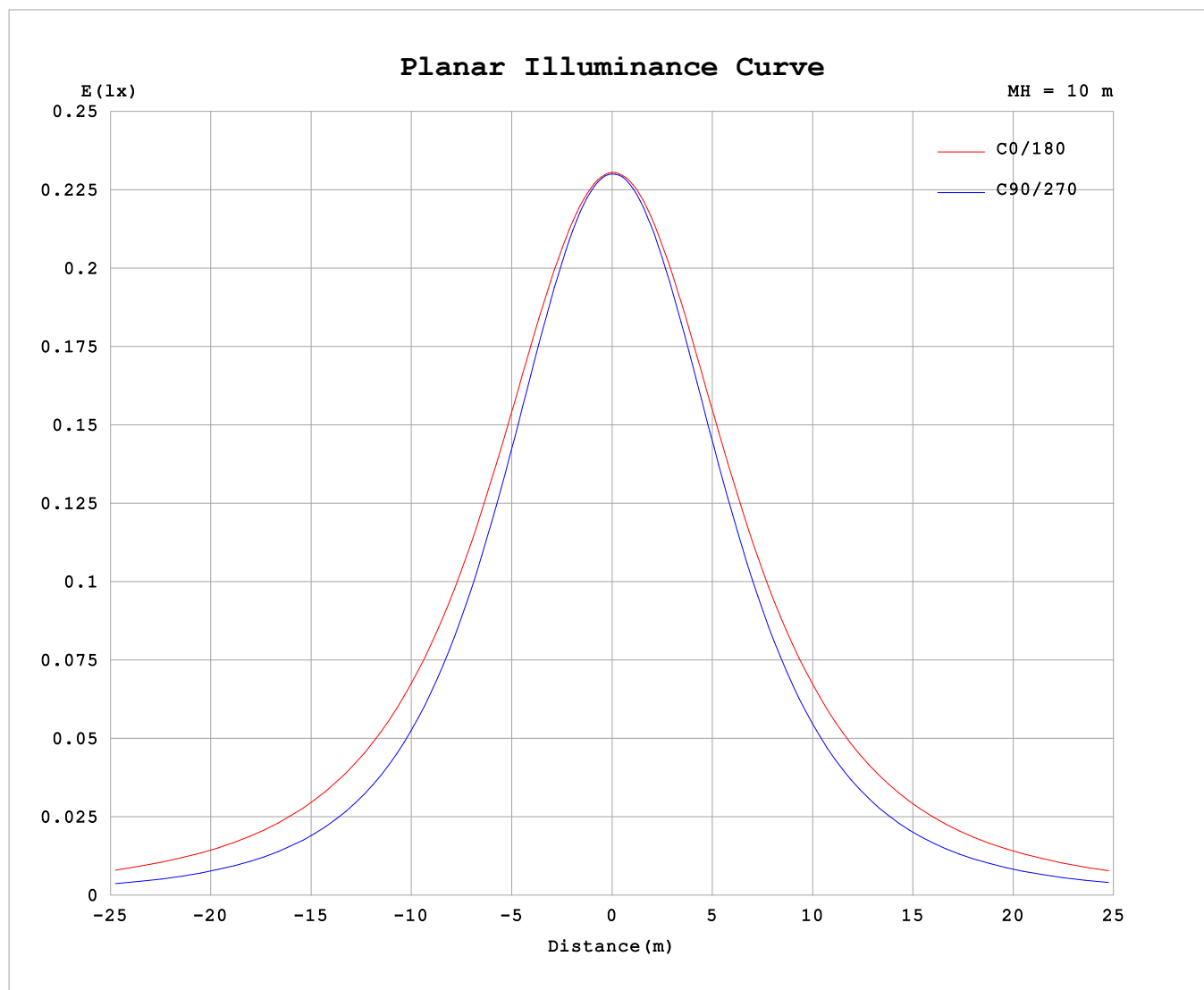
AvgL	cd/m2
L_0~180 (65) av	3241
L_0~180 (75) av	4683
L_0~180 (85) av	11958
L_90~270 (65) av	1753
L_90~270 (75) av	1720
L_90~270 (85) av	1994
L_45 (65) av	2585
L_45 (75) av	3484
L_45 (85) av	8381

Standard: GB/T 29293-2012

C Range: 0 - 360DEG
C Interval: 30.0DEG
Test Speed: HIGH
Temperature:25.3℃
Operators:
Test Date:2025-03-07

γ Range: 0 - 180DEG
γ Interval: 1.0DEG
Test System:EVERFINE GO-2000B_V1 SYSTEM V2.00.488
Humidity:65.0%
Test Distance:6.360m [K=1.0000]
Remarks:

Planar Illuminance Curve



C Range: 0 - 360DEG
C Interval: 30.0DEG
Test Speed: HIGH
Temperature: 25.3 °C
Operators:
Test Date: 2025-03-07

γ Range: 0 - 180DEG
 γ Interval: 1.0DEG
Test System: EVERFINE GO-2000B_V1 SYSTEM V2.00.488
Humidity: 65.0%
Test Distance: 6.360m [K=1.0000]
Remarks:

LUMINOUS DISTRIBUTION INTENSITY DATA

Test:U:24.00V I:0.1719A P:4.126W PF:1.000 Freq:0Hz Lamp Flux:109.051x1 lm		
NAME: SF21-24V-5050-60-RGBW(5000K)-G	TYPE:	WEIGHT:
SPEC.:	DIM.: Length=1m	SERIAL No.:
MFR.: Olym pia lighting	SUR.:	Shielding Angle:

Table--1

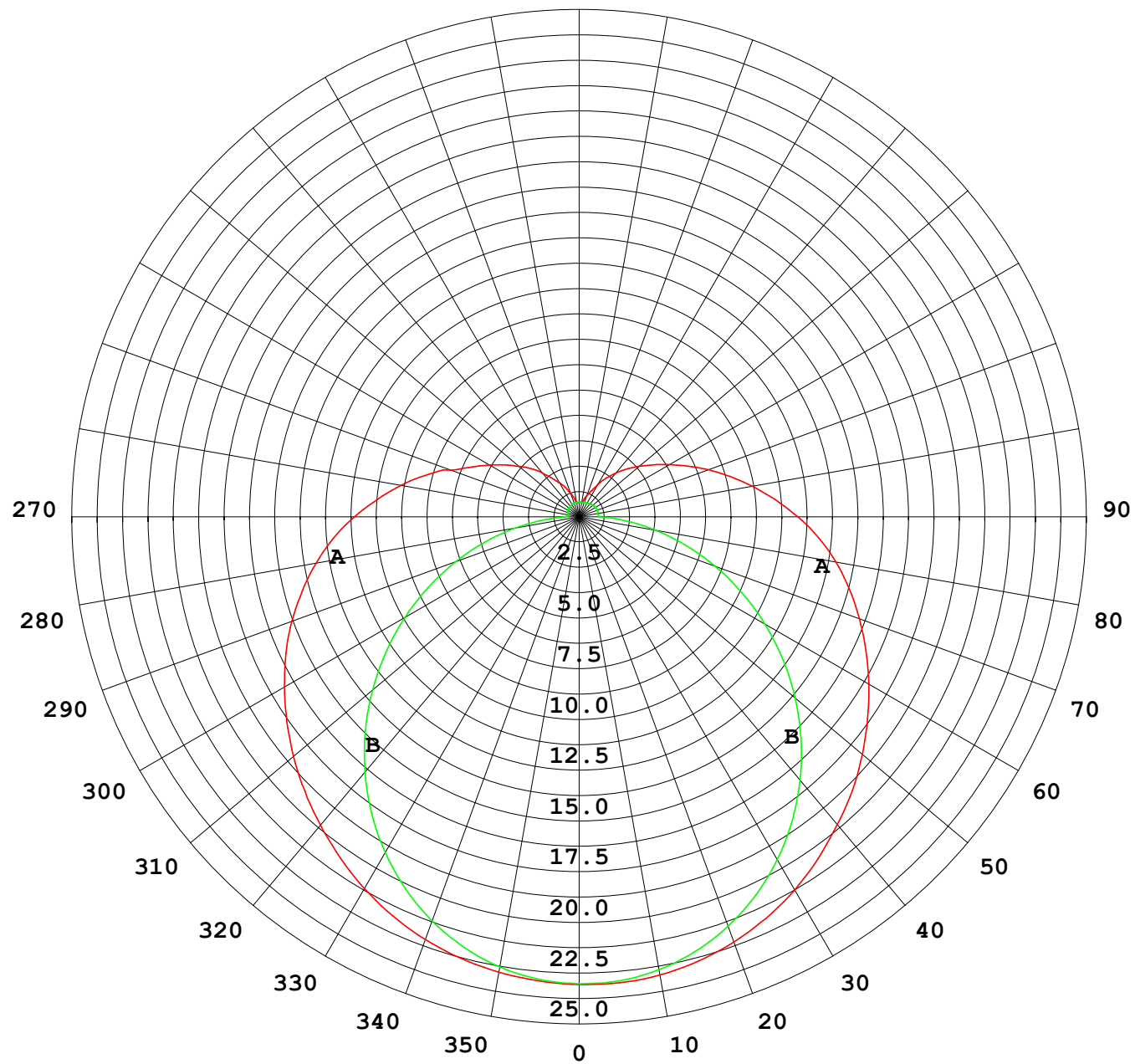
UNIT: cd

C (DEG) γ (DEG)	0	30	60	90	120	150	180	210	240	270	300	330							
0	23.0	23.0	23.0	23.0	23.0	23.0	23.0	23.0	23.0	23.0	23.0	23.0							
5	22.9	22.9	22.9	22.9	23.0	23.0	23.0	23.0	23.0	23.0	22.9	23.0							
10	22.8	22.7	22.6	22.5	22.7	22.8	22.9	22.9	22.8	22.7	22.7	22.8							
15	22.5	22.4	22.1	22.0	22.2	22.5	22.6	22.6	22.4	22.2	22.2	22.5							
20	22.1	21.9	21.4	21.2	21.6	22.0	22.3	22.2	21.8	21.5	21.6	22.0							
25	21.7	21.3	20.6	20.3	20.7	21.4	21.8	21.6	21.0	20.6	20.9	21.5							
30	21.1	20.6	19.6	19.1	19.8	20.7	21.2	20.9	20.1	19.5	20.0	20.8							
35	20.5	19.8	18.5	17.8	18.7	19.9	20.5	20.1	19.0	18.3	18.9	20.1							
40	19.8	19.0	17.3	16.4	17.4	19.0	19.8	19.2	17.8	17.0	17.8	19.2							
45	19.1	18.1	16.0	14.9	16.1	18.1	19.0	18.2	16.5	15.5	16.5	18.3							
50	18.4	17.1	14.6	13.3	14.7	17.1	18.2	17.3	15.2	13.9	15.2	17.4							
55	17.6	16.2	13.2	11.6	13.3	16.1	17.3	16.2	13.7	12.3	13.8	16.5							
60	16.8	15.2	11.8	9.92	11.9	15.1	16.5	15.2	12.3	10.6	12.4	15.5							
65	15.9	14.2	10.5	8.19	10.6	14.1	15.6	14.2	11.0	8.85	11.1	14.6							
70	15.0	13.3	9.18	6.47	9.24	13.1	14.7	13.2	9.60	7.13	9.84	13.6							
75	14.1	12.3	7.98	4.80	8.02	12.1	13.8	12.2	8.32	5.44	8.64	12.7							
80	13.1	11.3	6.90	3.19	6.91	11.1	12.8	11.2	7.17	3.83	7.55	11.7							
85	12.1	10.4	5.93	1.70	5.93	10.1	11.8	10.2	6.14	2.30	6.54	10.7							
90	11.1	9.35	5.04	0.77	5.02	9.11	10.8	9.19	5.21	1.00	5.62	9.67							
95	9.97	8.34	4.27	0.56	4.27	8.12	9.70	8.18	4.42	0.96	4.81	8.65							
100	8.91	7.39	3.25	0.58	3.65	7.19	8.66	7.25	3.78	0.96	3.85	7.70							
105	7.86	6.38	2.61	0.60	3.15	6.33	7.69	6.39	3.26	0.96	3.07	6.67							
110	6.74	5.30	2.24	0.62	2.77	5.55	6.78	5.60	2.87	0.96	2.68	5.75							
115	5.82	4.58	2.08	0.64	2.46	4.84	5.92	4.89	2.55	0.96	2.47	5.00							
120	5.11	3.98	1.90	0.65	2.19	4.23	5.15	4.28	2.27	0.94	2.10	4.37							
125	4.46	3.51	1.63	0.66	1.93	3.70	4.47	3.74	1.99	0.92	1.84	3.79							
130	3.86	3.11	1.48	0.67	1.60	3.22	3.88	3.26	1.72	0.89	1.61	3.31							
135	3.36	2.50	1.28	0.68	1.33	2.77	3.34	2.81	1.47	0.86	1.45	2.85							
140	2.83	2.06	1.12	0.68	1.12	2.35	2.82	2.38	1.25	0.83	1.21	2.14							
145	2.30	1.57	0.98	0.69	0.99	1.94	2.34	1.96	1.09	0.81	1.03	1.73							
150	1.93	1.33	0.84	0.71	0.88	1.53	1.84	1.55	0.90	0.79	0.90	1.36							
155	1.59	1.11	0.77	0.71	0.75	1.21	1.40	1.21	0.81	0.76	0.80	1.04							
160	1.23	0.93	0.75	0.72	0.72	0.98	1.10	1.01	0.75	0.74	0.74	0.90							
165	0.94	0.77	0.73	0.72	0.71	0.78	0.84	0.82	0.74	0.74	0.74	0.75							
170	0.72	0.73	0.73	0.72	0.71	0.73	0.74	0.74	0.73	0.72	0.73	0.74							
175	0.71	0.73	0.72	0.72	0.72	0.72	0.72	0.73	0.73	0.72	0.72	0.74							
180	0.71	0.72	0.72	0.72	0.72	0.72	0.71	0.73	0.73	0.72	0.72	0.74							

C Range: 0 - 360DEG
C Interval: 30.0DEG
Test Speed: HIGH
Temperature:25.3℃
Operators:
Test Date:2025-03-07

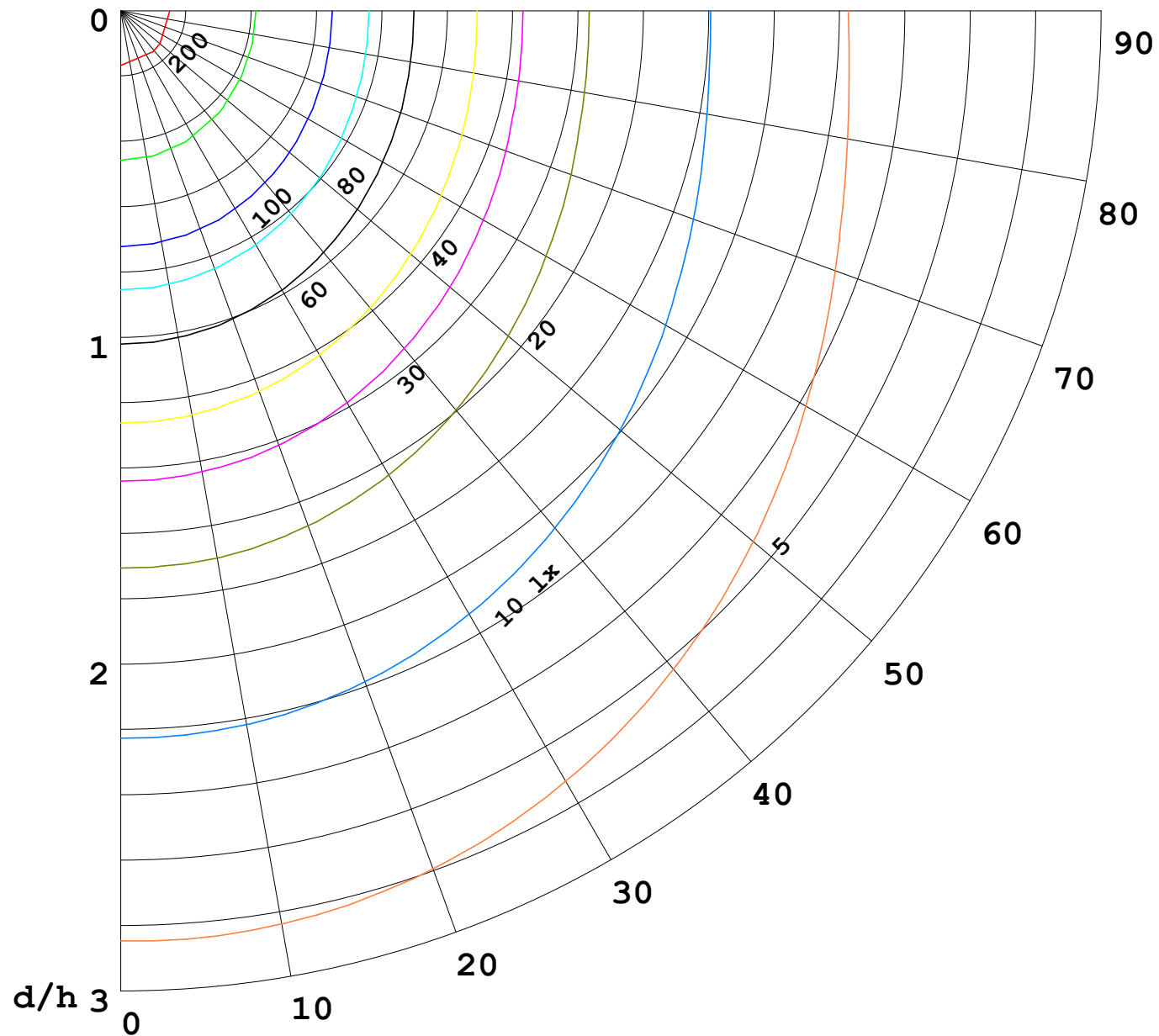
γ Range: 0 - 180DEG
γ Interval: 1.0DEG
Test System:EVERFINE GO-2000B_V1 SYSTEM V2.00.488
Humidity:65.0%
Test Distance:6.360m [K=1.0000]
Remarks:

I (cd)



1000 lm

$\kappa = 1$



F = 1000 lm
 K = 0.7
 Hcc = 0.8 m
 Hfc = 0.0 m
 Eave = 100 lx

	Pcc	Pw	Pfc
—————	70	50	30
—————	50	30	20

