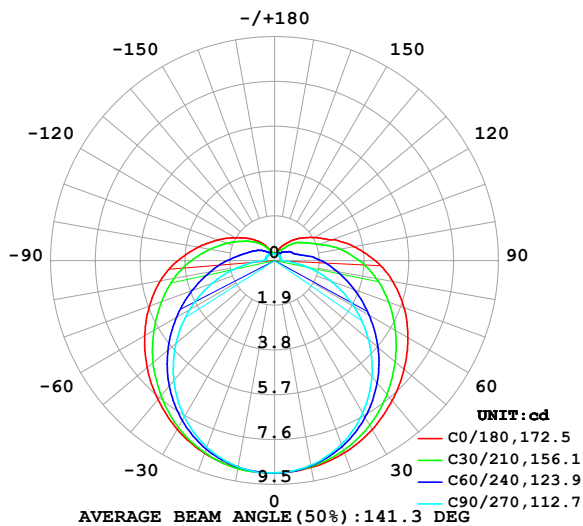


LUMINAIRE PHOTOMETRIC TEST REPORT

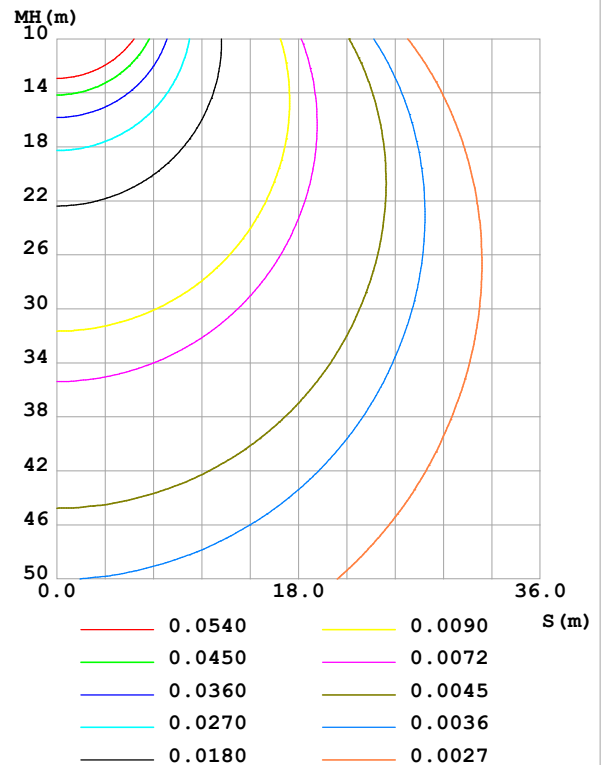
Test:U:24.00V I:0.1602A P:3.845W PF:1.000 Freq:0Hz Lamp Flux:42.4751x1 lm		
NAME: SF21-24V-5050-60-RGBW(5000K)-R	TYPE:	WEIGHT:
SPEC.:	DIM.: Length=1m	SERIAL No.:
MFR.: OLympia lighting	SUR.:	Shielding Angle:

DATA OF LAMP		PHOTOMETRIC DATA Eff: 11.05 lm/W			
MODEL	5050	I _{max} (cd)	9.008	S/MH(C0/180)	1.37
NOMINAL POWER(W)		LOR(%)	100.0	S/MH(C90/270)	1.26
RATED VOLTAGE(V)	24	TOTAL FLUX(lm)	42.480	η UP,DN(C0-180)	9.2,40.2
NOMINAL FLUX(lm)	42.4751	CIE CLASS	SEMI-D.	η UP,DN(C180-360)	9.6,40.9
LAMPS INSIDE	1	η up (%)	18.9	CIBSE SHR NOM	1.50
TEST VOLTAGE(V)		η down (%)	81.1	CIBSE SHR MAX	1.55

LUMINOUS INTENSITY DISTRIBUTION DIAGRAM



C0 PLANE ISOLUX DIAGRAM (UNIT:lx)



C Range: 0 - 360DEG
C Interval: 30.0DEG
Test Speed: HIGH
Temperature:25.3℃
Operators:
Test Date:2025-03-07

γ Range: 0 - 180DEG
γ Interval: 1.0DEG
Test System:EVERFINE GO-2000B_V1 SYSTEM V2.00.488
Humidity:65.0%
Test Distance:6.360m [K=1.0000]
Remarks:

ZONAL FLUX DIAGRAM

ZONAL FLUX DIAGRAM:

γ	C0	C45	C90	C135	C180	C225	C270	C315	γ	Φ zone	Φ total	%lum, lamp
10	8.913	8.861	8.814	8.902	8.945	8.936	8.890	8.894	0- 10	0.8548	0.8548	2.01,2.01
20	8.677	8.479	8.291	8.525	8.697	8.591	8.422	8.555	10- 20	2.470	3.325	7.83,7.83
30	8.279	7.874	7.479	7.913	8.270	8.006	7.660	7.989	20- 30	3.812	7.137	16.8,16.8
40	7.758	7.097	6.421	7.111	7.696	7.223	6.655	7.242	30- 40	4.739	11.88	28,28
50	7.173	6.204	5.196	6.205	7.059	6.325	5.462	6.380	40- 50	5.190	17.07	40.2,40.2
60	6.533	5.274	3.876	5.250	6.373	5.356	4.158	5.468	50- 60	5.179	22.24	52.4,52.4
70	5.844	4.374	2.524	4.325	5.649	4.418	2.815	4.580	60- 70	4.784	27.03	63.6,63.6
80	5.092	3.544	1.250	3.488	4.917	3.554	1.515	3.741	70- 80	4.120	31.15	73.3,73.3
90	4.267	2.786	0.3173	2.723	4.107	2.776	0.4224	2.974	80- 90	3.308	34.46	81.1,81.1
100	3.431	2.060	0.2528	2.082	3.294	2.122	0.4014	2.242	90-100	2.544	37.00	87.1,87.1
110	2.599	1.452	0.2587	1.599	2.571	1.630	0.3971	1.638	100-110	1.881	38.88	91.5,91.5
120	1.969	1.145	0.2703	1.238	1.954	1.265	0.3900	1.268	110-120	1.352	40.23	94.7,94.7
130	1.491	0.8862	0.2758	0.9393	1.470	0.9613	0.3688	0.9596	120-130	0.9512	41.18	96.9,97
140	1.113	0.6104	0.2837	0.6810	1.072	0.7102	0.3400	0.6551	130-140	0.6232	41.81	98.4,98.4
150	0.7699	0.4344	0.2920	0.4732	0.6856	0.4836	0.3210	0.4503	140-150	0.3618	42.17	99.3,99.3
160	0.5017	0.3392	0.2947	0.3376	0.4322	0.3566	0.3099	0.3343	150-160	0.1914	42.36	99.7,99.7
170	0.3027	0.2972	0.2947	0.2963	0.3029	0.3042	0.3013	0.3026	160-170	0.0916	42.45	99.9,99.9
180	0.2969	0.2945	0.2947	0.2915	0.2940	0.3017	0.2976	0.3001	170-180	0.0285	42.48	100,100
DEG	LUMINOUS INTENSITY:cd									UNIT:lm		

Conical surface Flux(90deg): 14.444 lm

%lum = 34.0%

%lamp = 34.0%

Conical surface Flux(130deg): 24.706 lm

%lum = 58.2%

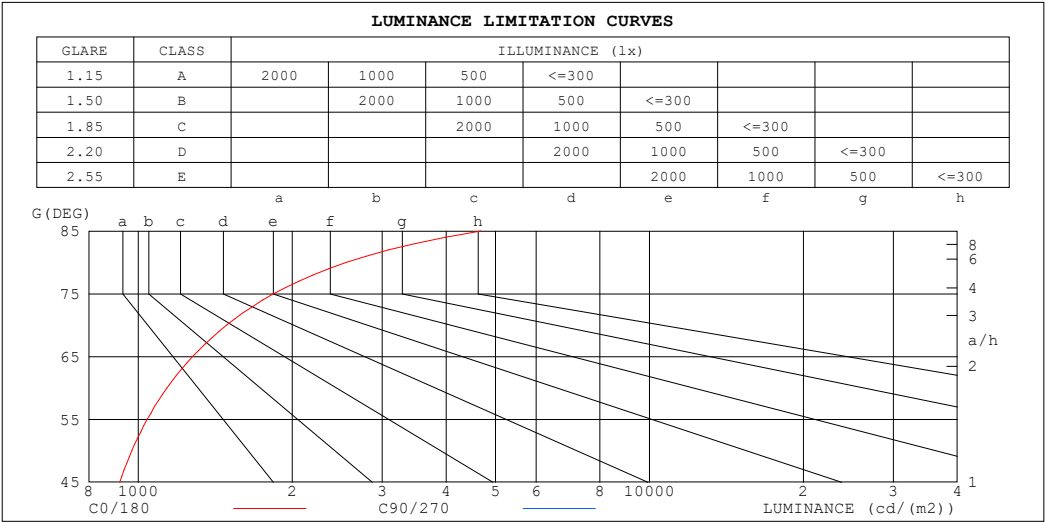
%lamp = 58.2%

C Range: 0 - 360DEG
 C Interval: 30.0DEG
 Test Speed: HIGH
 Temperature:25.3℃
 Operators:
 Test Date:2025-03-07

γ Range: 0 - 180DEG
 γ Interval: 1.0DEG
 Test System:EVERFINE GO-2000B_V1 SYSTEM V2.00.488
 Humidity:65.0%
 Test Distance:6.360m [K=1.0000]
 Remarks:

LUMINANCE LIMITATION CURVES

Test:U:24.00V I:0.1602A P:3.845W PF:1.000 Freq:0Hz Lamp Flux:42.4751x1 lm		
NAME: SF21-24V-5050-60-RGBW(5000K)-R	TYPE:	WEIGHT:
SPEC.:	DIM.: Length=1m	SERIAL No.:
MFR.: OLYMPIA lighting	SUR.:	Shielding Angle:



LUMINANCE cd/(m2)		
G (DEG)	C0/180	C90/270
85	4686	664
80	2553	625
75	1840	631
70	1488	641
65	1278	659
60	1138	673
55	1041	689
50	972	702
45	920	716

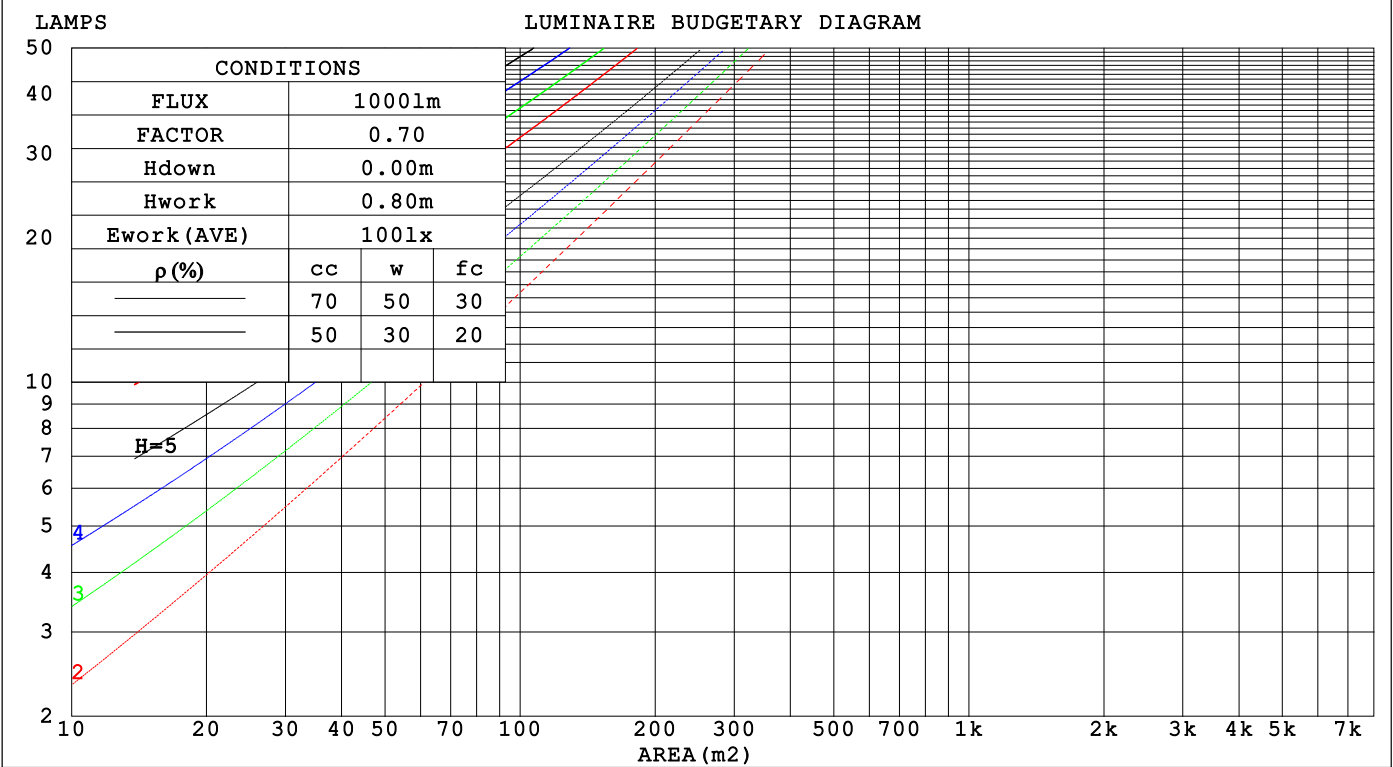
C Range: 0 - 360DEG
C Interval: 30.0DEG
Test Speed: HIGH
Temperature:25.3℃
Operators:
Test Date:2025-03-07

γ Range: 0 - 180DEG
γ Interval: 1.0DEG
Test System:EVERFINE GO-2000B_V1 SYSTEM V2.00.488
Humidity:65.0%
Test Distance:6.360m [K=1.0000]
Remarks:

CU AND LUMINAIRE BUDGETARY ESTIMATE DIAGRAM

Test:U:24.00V I:0.1602A P:3.845W PF:1.000 Freq:0Hz		
Lamp Flux:42.4751x1 lm		
NAME: SF21-24V-5050-60-RGBW(5000K)-R	TYPE:	WEIGHT:
SPEC.:	DIM.: Length=1m	SERIAL No.:
MFR.: OLYMPIA lighting	SUR.:	Shielding Angle:

pcc	80%			70%			50%			30%			10%			0
pw	50%	30%	10%	50%	30%	10%	50%	30%	10%	50%	30%	10%	50%	30%	10%	0
pfc	20%			20%			20%			20%			20%			0
RCR	RCR:Room Cavity Ratio			Coefficients of Utilization(CU)												
0.0	1.15	1.15	1.15	1.10	1.10	1.10	1.01	1.01	1.01	.92	.92	.92	.85	.85	.85	.81
1.0	.95	.90	.85	.91	.86	.82	.83	.79	.76	.76	.73	.70	.69	.67	.65	.61
2.0	.81	.73	.67	.78	.71	.64	.71	.65	.60	.65	.60	.56	.59	.55	.52	.49
3.0	.70	.61	.54	.67	.59	.52	.62	.55	.49	.56	.51	.46	.51	.47	.43	.40
4.0	.62	.52	.45	.59	.51	.44	.54	.47	.41	.50	.44	.39	.45	.40	.36	.33
5.0	.55	.45	.38	.53	.44	.37	.48	.41	.35	.44	.38	.33	.41	.35	.31	.28
6.0	.49	.40	.33	.47	.38	.32	.43	.36	.30	.40	.33	.29	.37	.31	.27	.24
7.0	.44	.35	.29	.43	.34	.28	.39	.32	.27	.36	.30	.25	.33	.28	.24	.21
8.0	.40	.32	.25	.39	.31	.25	.36	.29	.24	.33	.27	.22	.31	.25	.21	.19
9.0	.37	.28	.23	.35	.28	.22	.33	.26	.21	.30	.24	.20	.28	.23	.19	.17
10.0	.34	.26	.20	.33	.25	.20	.30	.24	.19	.28	.22	.18	.26	.21	.17	.15



C Range: 0 - 360DEG
C Interval: 30.0DEG
Test Speed: HIGH
Temperature:25.3℃
Operators:
Test Date:2025-03-07

γ Range: 0 - 180DEG
γ Interval: 1.0DEG
Test System:EVERFINE GO-2000B_V1 SYSTEM V2.00.488
Humidity:65.0%
Test Distance:6.360m [K=1.0000]
Remarks:

WEC AND CCEC

Test:U:24.00V I:0.1602A P:3.845W PF:1.000 Freq:0Hz Lamp Flux:42.4751x1 lm		
NAME: SF21-24V-5050-60-RGBW(5000K)-R	TYPE:	WEIGHT:
SPEC.:	DIM.: Length=1m	SERIAL No.:
MFR.: OLympia lighting	SUR.:	Shielding Angle:

pcc	80%			70%			50%			30%			10%			0														
pw	50%	30%	10%	50%	30%	10%	50%	30%	10%	50%	30%	10%	50%	30%	10%	0														
pfc	20%			20%			20%			20%			20%			0														
RCR	RCR:Room Cavity Ratio															Wall Exitance Coefficients(WEC)														
0.0																														
1.0	.389	.221	.070	.376	.215	.068	.352	.202	.065	.330	.190	.061	.309	.179	.058															
2.0	.336	.184	.056	.324	.178	.055	.302	.168	.052	.282	.158	.049	.263	.149	.047															
3.0	.298	.158	.047	.287	.154	.046	.267	.145	.044	.249	.136	.042	.231	.128	.040															
4.0	.267	.139	.041	.258	.135	.040	.240	.127	.038	.223	.120	.036	.207	.113	.034															
5.0	.243	.124	.036	.234	.120	.035	.218	.113	.033	.202	.107	.032	.188	.101	.030															
6.0	.222	.111	.032	.214	.108	.031	.199	.102	.030	.185	.096	.028	.172	.091	.027															
7.0	.205	.101	.029	.198	.099	.028	.184	.093	.027	.171	.088	.026	.159	.083	.024															
8.0	.190	.093	.026	.183	.090	.026	.171	.085	.024	.159	.081	.023	.148	.076	.022															
9.0	.177	.086	.024	.171	.083	.023	.159	.079	.022	.148	.074	.021	.138	.070	.020															
10.0	.166	.079	.022	.160	.077	.022	.149	.073	.021	.139	.069	.020	.130	.065	.019															

pcc	80%			70%			50%			30%			10%			0
pw	50%	30%	10%	50%	30%	10%	50%	30%	10%	50%	30%	10%	50%	30%	10%	0
pfc	20%			20%			20%			20%			20%			0
RCR	RCR:Room Cavity Ratio						Ceiling Cavity Exitance Coefficients (CCEC)									
0.0	.334	.334	.334	.286	.286	.286	.195	.195	.195	.112	.112	.112	.036	.036	.036	
1.0	.331	.301	.273	.283	.258	.235	.194	.177	.163	.111	.103	.095	.036	.033	.031	
2.0	.324	.278	.239	.278	.239	.206	.190	.165	.144	.110	.096	.084	.035	.031	.028	
3.0	.317	.261	.217	.272	.225	.188	.186	.157	.132	.108	.091	.078	.035	.030	.026	
4.0	.309	.249	.203	.265	.215	.176	.182	.150	.124	.105	.088	.074	.034	.029	.024	
5.0	.301	.239	.193	.259	.207	.168	.178	.145	.119	.103	.085	.070	.033	.028	.023	
6.0	.294	.231	.186	.252	.200	.162	.174	.140	.115	.101	.082	.068	.033	.027	.023	
7.0	.287	.225	.181	.247	.195	.158	.170	.137	.112	.099	.080	.067	.032	.026	.022	
8.0	.280	.219	.177	.241	.190	.155	.167	.133	.110	.097	.079	.065	.031	.026	.022	
9.0	.274	.214	.174	.236	.186	.152	.163	.131	.108	.095	.077	.064	.031	.025	.021	
10.0	.268	.210	.172	.231	.182	.150	.160	.128	.107	.093	.076	.064	.030	.025	.021	

C Range: 0 - 360DEG
C Interval: 30.0DEG
Test Speed: HIGH
Temperature:25.3℃
Operators:
Test Date:2025-03-07

γ Range: 0 - 180DEG
γ Interval: 1.0DEG
Test System:EVERFINE GO-2000B_V1 SYSTEM V2.00.488
Humidity:65.0%
Test Distance:6.360m [K=1.0000]
Remarks:

UGR(Unified Glare Rating) Table

Test:U:24.00V I:0.1602A P:3.845W PF:1.000 Freq:0Hz Lamp Flux:42.475lx1 lm											
NAME: SF21-24V-5050-60-RGBW(5000K)-R						TYPE:		WEIGHT:			
SPEC.:						DIM.: Length=1m		SERIAL No.:			
MFR.: OLympia lighting						SUR.:		Shielding Angle:			
ceiling/cavity	0.7	0.7	0.5	0.5	0.3	0.7	0.7	0.5	0.5	0.3	
walls	0.5	0.3	0.5	0.3	0.3	0.5	0.3	0.5	0.3	0.3	
working plane	0.2	0.2	0.2	0.2	0.2	0.2	0.2	0.2	0.2	0.2	
Room dimensions		Viewed crosswise					Viewed endwise				
x = 2H y = 2H	2H	23.6	25.0	24.1	25.5	26.1	21.5	22.9	22.0	23.4	24.0
	3H	26.4	27.6	26.9	28.2	28.8	23.2	24.5	23.7	25.0	25.6
	4H	27.9	29.1	28.5	29.7	30.3	23.9	25.1	24.5	25.7	26.4
	6H	29.6	30.7	30.2	31.3	32.0	24.6	25.7	25.2	26.3	27.0
	8H	30.5	31.6	31.1	32.2	32.9	24.8	25.9	25.4	26.5	27.2
	12H	31.6	32.7	32.2	33.3	34.0	25.0	26.1	25.6	26.7	27.4
4H	2H	24.2	25.4	24.7	25.9	26.6	22.7	23.9	23.2	24.4	25.1
	3H	27.2	28.2	27.8	28.8	29.5	24.6	25.6	25.2	26.2	26.9
	4H	28.9	29.9	29.5	30.5	31.2	25.5	26.5	26.1	27.1	27.8
	6H	30.8	31.7	31.5	32.3	33.1	26.3	27.2	27.0	27.9	28.6
	8H	31.9	32.7	32.5	33.4	34.1	26.7	27.5	27.4	28.2	28.9
	12H	33.1	33.8	33.8	34.5	35.3	27.0	27.7	27.7	28.4	29.2
8H	4H	29.2	30.1	29.9	30.7	31.5	26.6	27.4	27.2	28.0	28.8
	6H	31.5	32.2	32.2	32.9	33.7	27.8	28.4	28.5	29.1	30.0
	8H	32.7	33.4	33.5	34.1	34.9	28.3	28.9	29.0	29.7	30.5
	12H	34.2	34.8	35.0	35.5	36.4	28.8	29.4	29.6	30.1	31.0
12H	4H	29.3	30.0	30.0	30.7	31.5	26.9	27.7	27.6	28.3	29.1
	6H	31.6	32.2	32.3	32.9	33.8	28.3	28.9	29.0	29.7	30.5
	8H	33.0	33.5	33.7	34.3	35.1	29.1	29.6	29.8	30.3	31.2
Variations with the observer position at spacings(CIE Pub.117):											
S = 1.0H		+ 0.1 / - 0.1					+ 0.1 / - 0.1				
1.5H		+ 0.2 / - 0.2					+ 0.2 / - 0.3				
2.0H		+ 0.2 / - 0.3					+ 0.2 / - 0.4				

CIE Pub.117, 42.48 lm Total Lamp Luminous Flux Correct (8log(F/F0) = -11.0)
Area: 0.0115 m2

C Range: 0 - 360DEG
C Interval: 30.0DEG
Test Speed: HIGH
Temperature:25.3℃
Operators:
Test Date:2025-03-07

γ Range: 0 - 180DEG
γ Interval: 1.0DEG
Test System:EVERFINE GO-2000B_V1 SYSTEM V2.00.488
Humidity:65.0%
Test Distance:6.360m [K=1.0000]
Remarks:

UTILIZATION FACTORS TABLE

Test:U:24.00V I:0.1602A P:3.845W PF:1.000 Freq:0Hz Lamp Flux:42.4751x1 lm		
NAME: SF21-24V-5050-60-RGBW(5000K) -R	TYPE:	WEIGHT:
SPEC.:	DIM.: Length=1m	SERIAL No.:
MFR.: OLympia lighting	SUR.:	Shielding Angle:

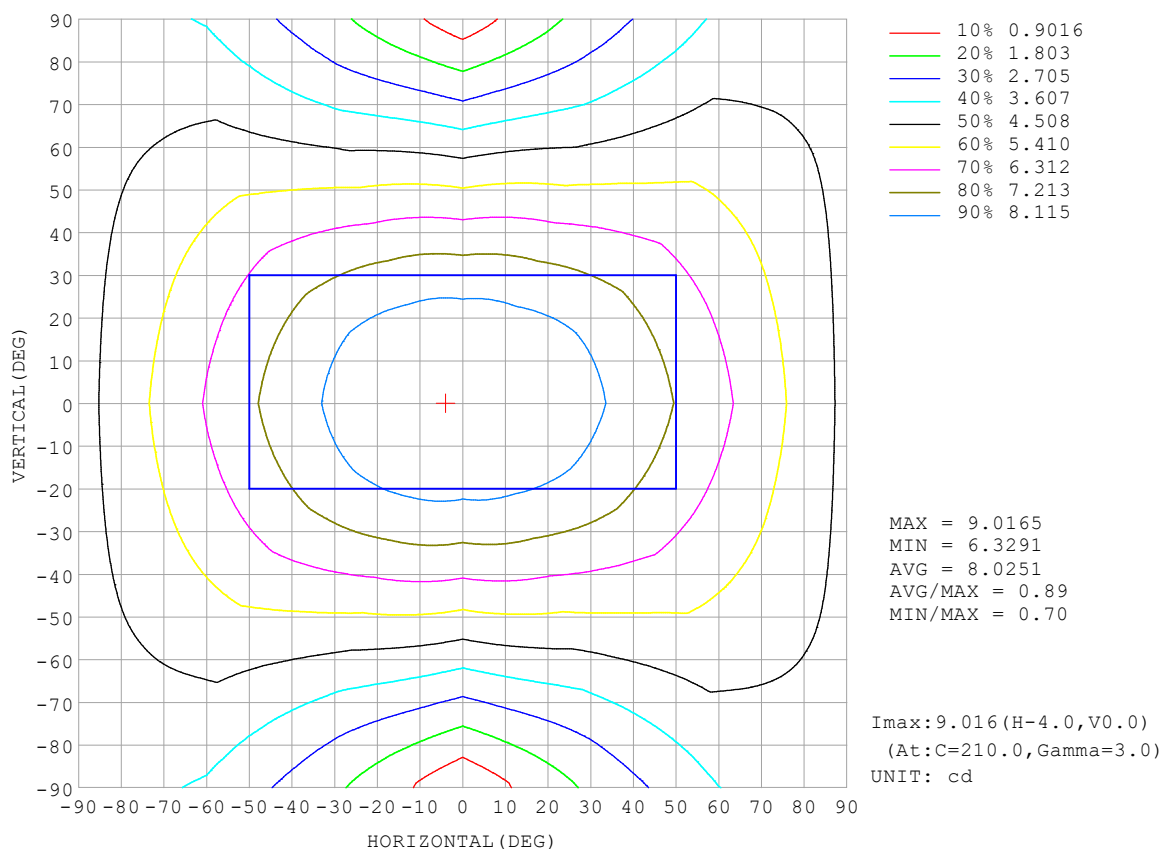
REFLECTANCE										
Ceiling	0.8	0.8	0.8	0.7	0.7	0.7	0.5	0.5	0.5	0
Walls	0.7	0.5	0.3	0.7	0.5	0.3	0.7	0.5	0.3	0
Working plane	0.2	0.2	0.2	0.2	0.2	0.2	0.2	0.2	0.2	0
ROOM INDEX	UTILIZATION FACTORS (PERCENT) $k(RI) \times RCR = 5$									
$k = 0.60$	47	35	28	46	34	27	44	34	27	20
0.80	56	43	35	55	43	35	52	41	34	26
1.00	64	51	43	62	50	42	59	50	41	32
1.25	71	58	50	69	57	49	64	54	47	37
1.50	76	64	55	73	62	54	68	59	52	41
2.00	83	72	64	80	70	62	74	66	59	48
2.50	88	78	69	84	75	68	78	70	64	51
3.00	92	82	75	88	79	73	81	74	69	55
4.00	96	88	82	92	85	79	85	79	74	60
5.00	99	92	86	95	89	84	88	83	78	63
ROOM INDEX	UF (total)									Direct
According to DIN EN 13032-2 2004			Suspended					SHRNOM = 1.25		

C Range: 0 - 360DEG
 C Interval: 30.0DEG
 Test Speed: HIGH
 Temperature: 25.3 °C
 Operators:
 Test Date: 2025-03-07

γ Range: 0 - 180DEG
 γ Interval: 1.0DEG
 Test System: EVERFINE GO-2000B_V1 SYSTEM V2.00.488
 Humidity: 65.0%
 Test Distance: 6.360m [K=1.0000]
 Remarks:

ISOCANDELA DIAGRAM

Test:U:24.00V I:0.1602A P:3.845W PF:1.000 Freq:0Hz Lamp Flux:42.4751x1 lm		
NAME: SF21-24V-5050-60-RGBW(5000K)-R	TYPE:	WEIGHT:
SPEC.:	DIM.: Length=1m	SERIAL No.:
MFR.: OLympia lighting	SUR.:	Shielding Angle:

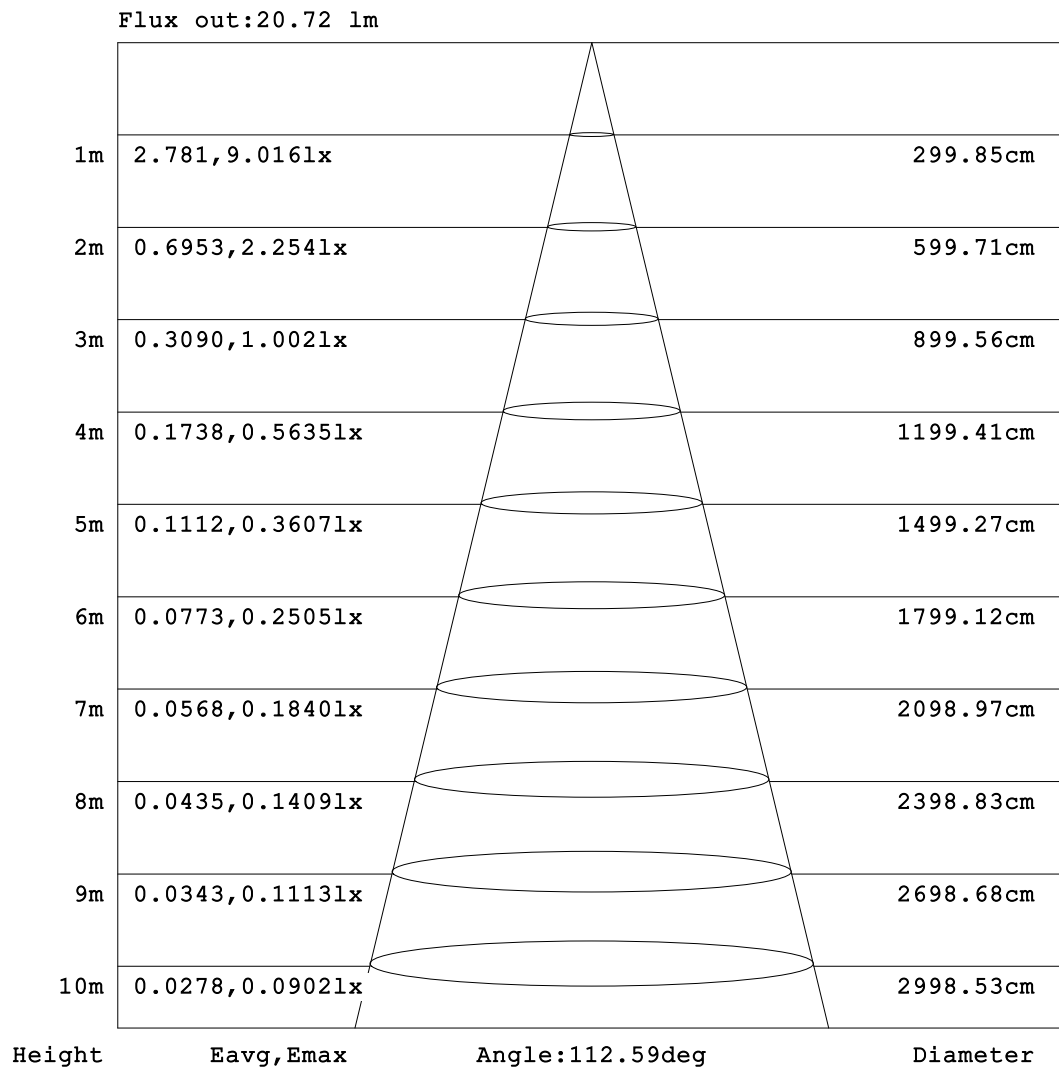


C Range: 0 - 360DEG
C Interval: 30.0DEG
Test Speed: HIGH
Temperature: 25.3°C
Operators:
Test Date: 2025-03-07

γ Range: 0 - 180DEG
γ Interval: 1.0DEG
Test System: EVERFINE GO-2000B_V1 SYSTEM V2.00.488
Humidity: 65.0%
Test Distance: 6.360m [K=1.0000]
Remarks:

AAI Figure

Test:U:24.00V I:0.1602A P:3.845W PF:1.000 Freq:0Hz Lamp Flux:42.4751lx1 lm		
NAME: SF21-24V-5050-60-RGBW(5000K)-R	TYPE:	WEIGHT:
SPEC.:	DIM.: Length=1m	SERIAL No.:
MFR.: OLympia lighting	SUR.:	Shielding Angle:



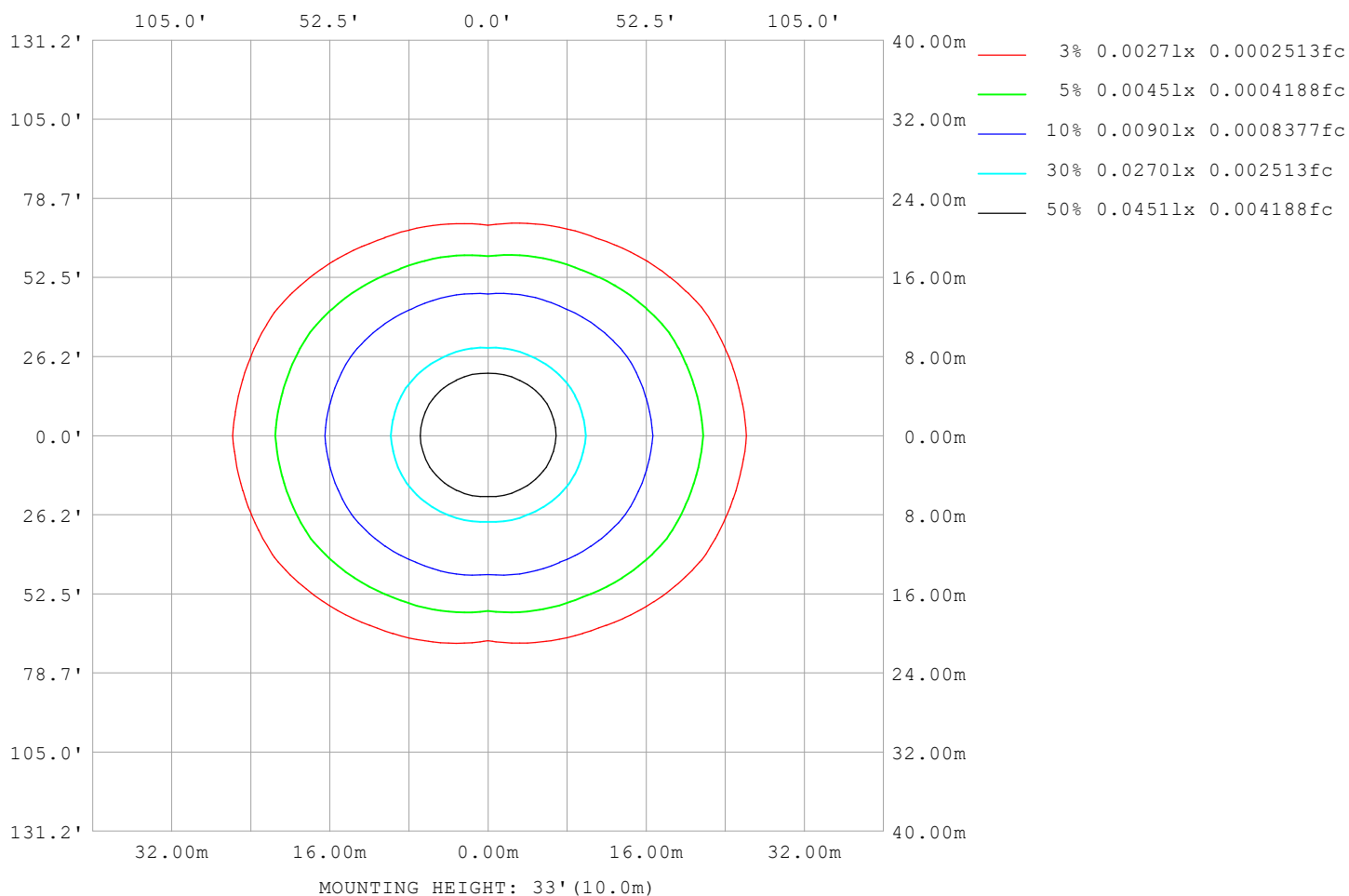
Note:The Curves indicate the illuminated area and the average illumination when the luminaire is at different distance.

C Range: 0 - 360DEG
C Interval: 30.0DEG
Test Speed: HIGH
Temperature:25.3℃
Operators:
Test Date:2025-03-07

γ Range: 0 - 180DEG
γ Interval: 1.0DEG
Test System:EVERFINE GO-2000B_V1 SYSTEM V2.00.488
Humidity:65.0%
Test Distance:6.360m [K=1.0000]
Remarks:

ISOLUX DIAGRAM

Test:U:24.00V I:0.1602A P:3.845W PF:1.000 Freq:0Hz Lamp Flux:42.475lx1 lm		
NAME: SF21-24V-5050-60-RGBW(5000K)-R	TYPE:	WEIGHT:
SPEC.:	DIM.: Length=1m	SERIAL No.:
MFR.: OLympia lighting	SUR.:	Shielding Angle:



C Range: 0 - 360DEG
C Interval: 30.0DEG
Test Speed: HIGH
Temperature: 25.3°C
Operators:
Test Date: 2025-03-07

γ Range: 0 - 180DEG
γ Interval: 1.0DEG
Test System: EVERFINE GO-2000B_V1 SYSTEM V2.00.488
Humidity: 65.0%
Test Distance: 6.360m [K=1.0000]
Remarks:

LED Avg.L Report

Test:U:24.00V I:0.1602A P:3.845W PF:1.000 Freq:0Hz Lamp Flux:42.4751x1 lm		
NAME: SF21-24V-5050-60-RGBW(5000K)-R	TYPE:	WEIGHT:
SPEC.:	DIM.: Length=1m	SERIAL No.:
MFR.: OLympia lighting	SUR.:	Shielding Angle:

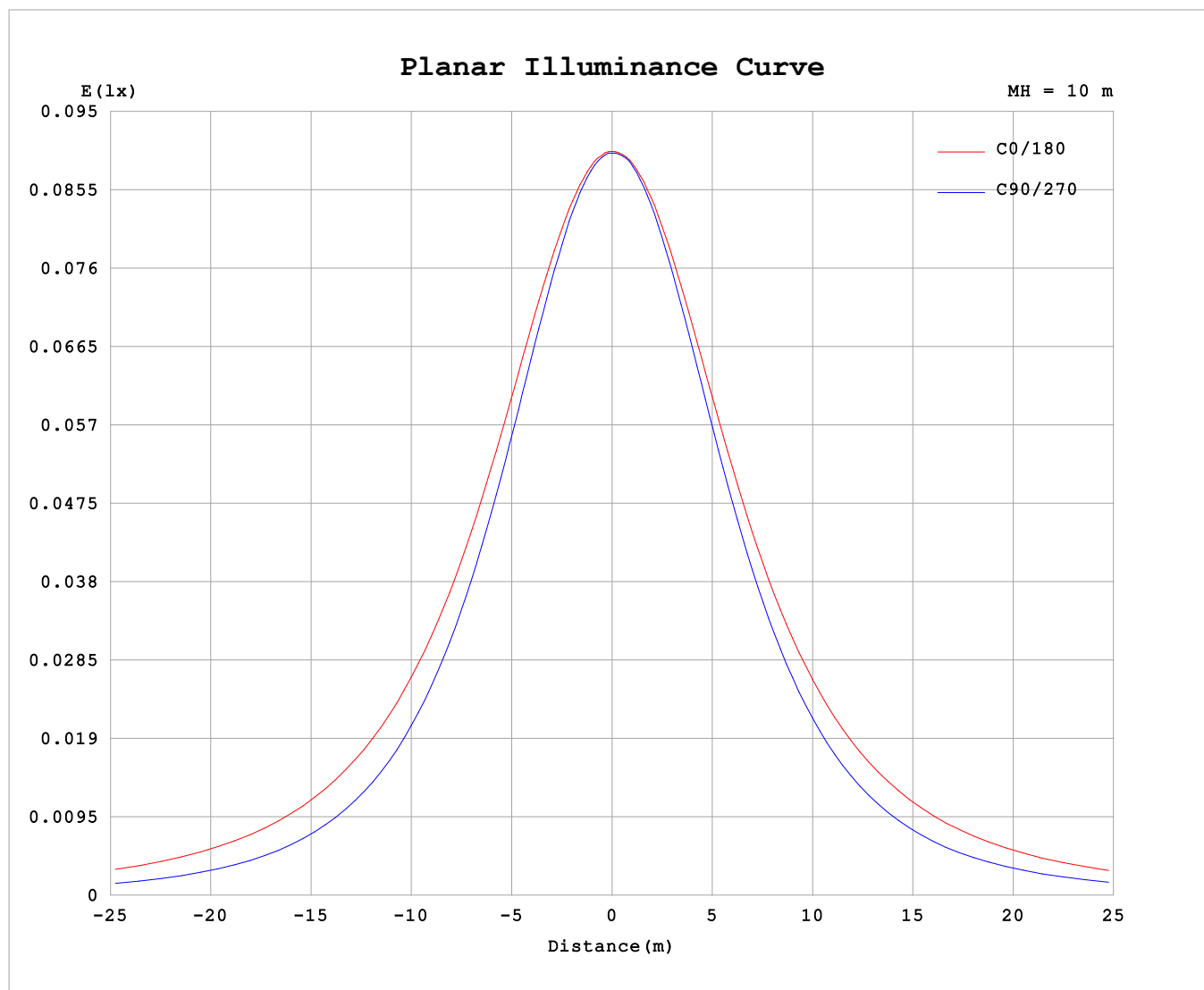
AvgL	cd/m2
L_0~180 (65) av	1256
L_0~180 (75) av	1808
L_0~180 (85) av	4597
L_90~270 (65) av	689
L_90~270 (75) av	678
L_90~270 (85) av	796
L_45 (65) av	1007
L_45 (75) av	1353
L_45 (85) av	3243

Standard: GB/T 29293-2012

C Range: 0 - 360DEG
C Interval: 30.0DEG
Test Speed: HIGH
Temperature:25.3℃
Operators:
Test Date:2025-03-07

γ Range: 0 - 180DEG
γ Interval: 1.0DEG
Test System:EVERFINE GO-2000B_V1 SYSTEM V2.00.488
Humidity:65.0%
Test Distance:6.360m [K=1.0000]
Remarks:

Planar Illuminance Curve



C Range: 0 - 360DEG
C Interval: 30.0DEG
Test Speed: HIGH
Temperature: 25.3 °C
Operators:
Test Date: 2025-03-07

γ Range: 0 - 180DEG
 γ Interval: 1.0DEG
Test System: EVERFINE GO-2000B_V1 SYSTEM V2.00.488
Humidity: 65.0%
Test Distance: 6.360m [K=1.0000]
Remarks:

LUMINOUS DISTRIBUTION INTENSITY DATA

Test:U:24.00V I:0.1602A P:3.845W PF:1.000 Freq:0Hz Lamp Flux:42.4751x1 lm		
NAME: SF21-24V-5050-60-RGBW(5000K)-R	TYPE:	WEIGHT:
SPEC.:	DIM.: Length=1m	SERIAL No.:
MFR.: OLYMPIA lighting	SUR.:	Shielding Angle:

Table--1

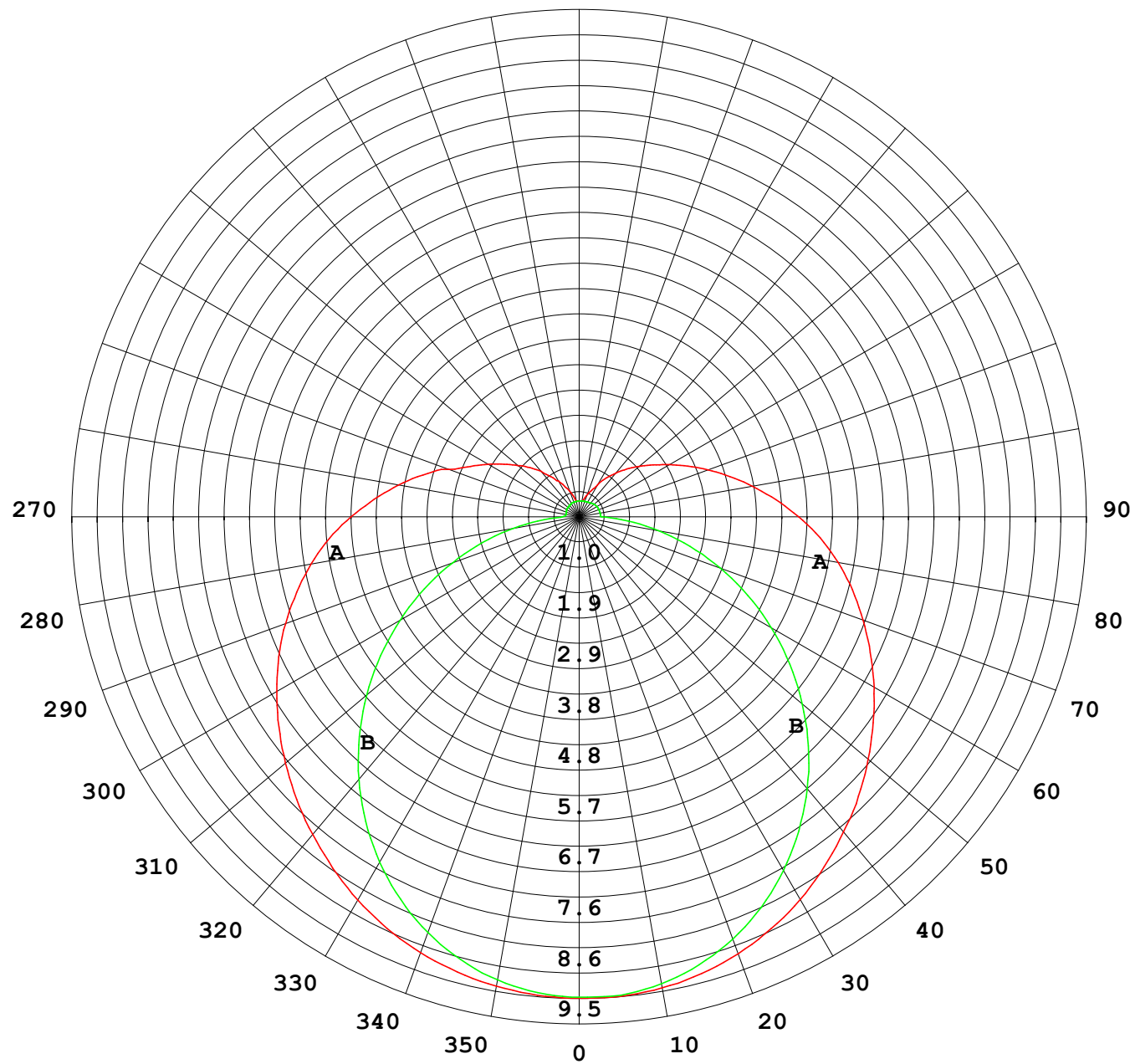
UNIT: cd

C (DEG) γ (DEG)	0	30	60	90	120	150	180	210	240	270	300	330						
0	9.01	9.01	9.01	9.01	9.01	9.01	9.01	9.01	9.01	9.01	9.01	9.01						
5	8.99	8.96	8.97	8.96	9.00	9.00	9.01	9.00	8.98	9.01	8.97	9.00						
10	8.91	8.88	8.85	8.81	8.88	8.92	8.94	8.97	8.90	8.89	8.87	8.92						
15	8.82	8.75	8.65	8.59	8.70	8.79	8.85	8.85	8.74	8.69	8.70	8.81						
20	8.68	8.57	8.39	8.29	8.44	8.61	8.70	8.67	8.51	8.42	8.47	8.64						
25	8.50	8.34	8.06	7.92	8.12	8.37	8.50	8.45	8.21	8.08	8.17	8.42						
30	8.28	8.07	7.68	7.48	7.74	8.09	8.27	8.17	7.84	7.66	7.82	8.16						
35	8.03	7.76	7.25	6.98	7.29	7.77	7.99	7.85	7.42	7.18	7.40	7.87						
40	7.76	7.42	6.77	6.42	6.82	7.40	7.70	7.49	6.95	6.65	6.95	7.53						
45	7.47	7.05	6.26	5.83	6.30	7.03	7.39	7.12	6.45	6.08	6.46	7.17						
50	7.17	6.68	5.72	5.20	5.76	6.65	7.06	6.74	5.91	5.46	5.94	6.82						
55	6.86	6.30	5.18	4.55	5.20	6.24	6.72	6.32	5.35	4.83	5.40	6.44						
60	6.53	5.91	4.64	3.88	4.66	5.84	6.37	5.91	4.80	4.16	4.88	6.06						
65	6.20	5.53	4.10	3.21	4.12	5.43	6.01	5.51	4.26	3.49	4.35	5.68						
70	5.84	5.15	3.59	2.52	3.60	5.05	5.65	5.11	3.73	2.82	3.84	5.31						
75	5.47	4.77	3.13	1.88	3.13	4.66	5.29	4.71	3.22	2.16	3.37	4.93						
80	5.09	4.38	2.71	1.25	2.69	4.28	4.92	4.33	2.78	1.51	2.94	4.54						
85	4.69	3.99	2.33	0.67	2.31	3.89	4.52	3.94	2.37	0.93	2.54	4.15						
90	4.27	3.60	1.98	0.32	1.96	3.49	4.11	3.54	2.01	0.42	2.19	3.76						
95	3.85	3.20	1.68	0.26	1.66	3.11	3.69	3.15	1.71	0.40	1.88	3.36						
100	3.43	2.84	1.28	0.25	1.42	2.75	3.29	2.79	1.45	0.40	1.50	2.99						
105	3.02	2.44	1.03	0.26	1.23	2.42	2.92	2.46	1.25	0.40	1.20	2.59						
110	2.60	2.02	0.88	0.26	1.08	2.11	2.57	2.15	1.11	0.40	1.05	2.22						
115	2.24	1.75	0.83	0.26	0.97	1.84	2.25	1.89	0.98	0.39	0.97	1.93						
120	1.97	1.53	0.76	0.27	0.87	1.61	1.95	1.65	0.88	0.39	0.84	1.70						
125	1.72	1.34	0.65	0.27	0.76	1.41	1.69	1.44	0.77	0.38	0.72	1.47						
130	1.49	1.19	0.59	0.28	0.66	1.22	1.47	1.26	0.67	0.37	0.64	1.28						
135	1.30	0.96	0.52	0.28	0.55	1.06	1.27	1.09	0.58	0.35	0.56	1.11						
140	1.11	0.78	0.44	0.28	0.46	0.90	1.07	0.93	0.49	0.34	0.48	0.83						
145	0.91	0.60	0.37	0.29	0.40	0.75	0.89	0.77	0.42	0.33	0.41	0.69						
150	0.77	0.51	0.36	0.29	0.35	0.59	0.69	0.62	0.35	0.32	0.36	0.54						
155	0.62	0.44	0.33	0.29	0.31	0.47	0.54	0.48	0.32	0.31	0.32	0.44						
160	0.50	0.37	0.31	0.29	0.29	0.38	0.43	0.41	0.30	0.31	0.31	0.36						
165	0.39	0.31	0.30	0.29	0.29	0.31	0.33	0.33	0.30	0.31	0.30	0.31						
170	0.30	0.30	0.30	0.29	0.29	0.30	0.30	0.31	0.30	0.30	0.30	0.30						
175	0.30	0.30	0.29	0.29	0.29	0.29	0.30	0.30	0.30	0.30	0.30	0.30						
180	0.30	0.29	0.29	0.29	0.29	0.29	0.29	0.30	0.30	0.30	0.30	0.30						

C Range: 0 - 360DEG
C Interval: 30.0DEG
Test Speed: HIGH
Temperature:25.3℃
Operators:
Test Date:2025-03-07

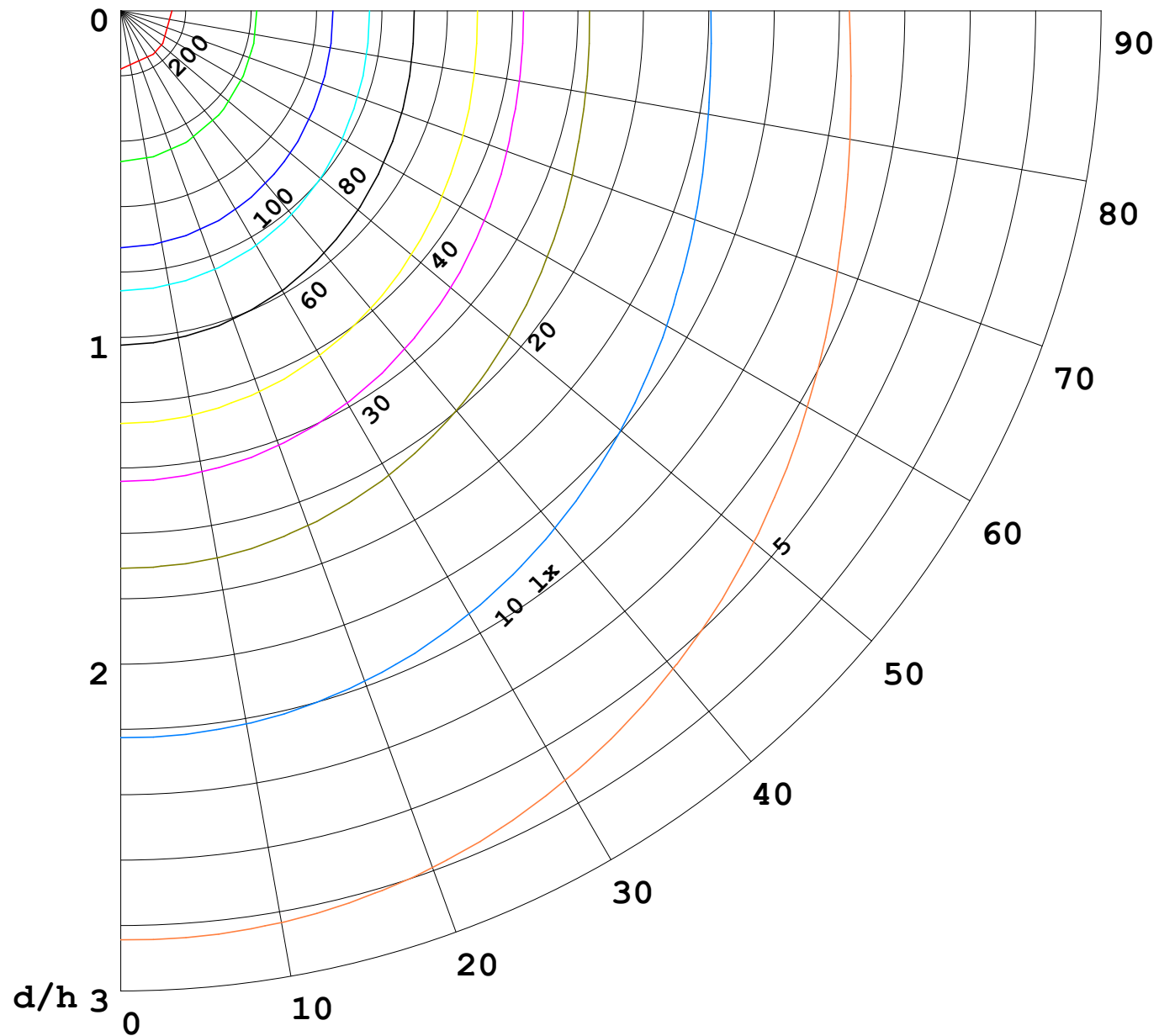
γ Range: 0 - 180DEG
γ Interval: 1.0DEG
Test System:EVERFINE GO-2000B_V1 SYSTEM V2.00.488
Humidity:65.0%
Test Distance:6.360m [K=1.0000]
Remarks:

I (cd)



1000 lm

$\kappa = 1$



F = 1000 lm
 K = 0.7
 Hcc = 0.8 m
 Hfc = 0.0 m
 Eave = 100 lx

	Pcc	Pw	Pfc
—————	70	50	30
—————	50	30	20

