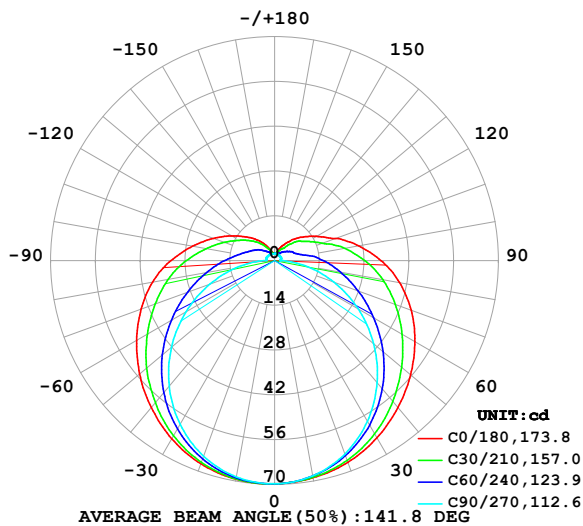


LUMINAIRE PHOTOMETRIC TEST REPORT

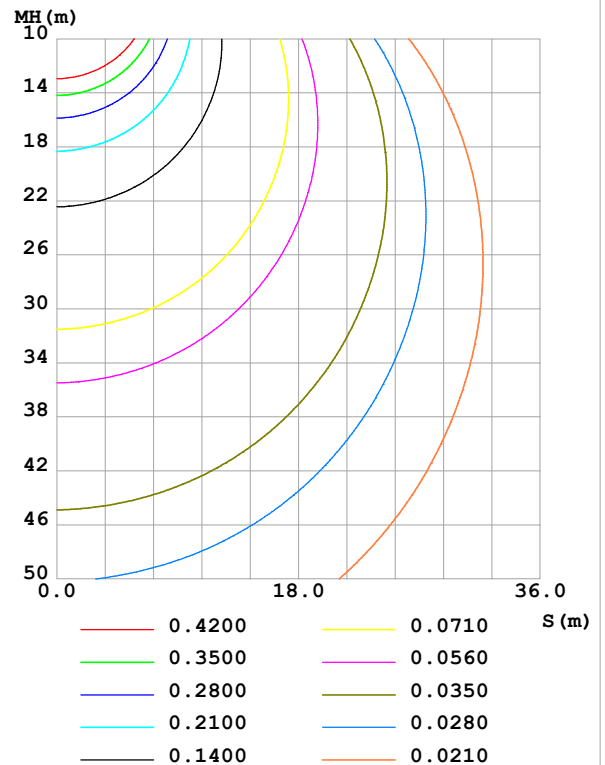
Test:U:24.00V I:0.7285A P:17.48W PF:1.000 Freq:0Hz Lamp Flux:329.99x1 lm		
NAME: SF21-24V-5050-60-RGBW(5000K)-ALL	TYPE:	WEIGHT:
SPEC.:	DIM.: Length=1m	SERIAL No.:
MFR.: Olymphia lighting	SUR.:	Shielding Angle:

DATA OF LAMP		PHOTOMETRIC DATA Eff: 18.87 lm/W			
MODEL	5050	Imax (cd)	69.83	S/MH(C0/180)	1.38
NOMINAL POWER(W)		LOR(%)	100.0	S/MH(C90/270)	1.26
RATED VOLTAGE(V)	24	TOTAL FLUX(lm)	329.99	η UP,DN(C0-180)	9.3,40.2
NOMINAL FLUX(lm)	329.99	CIE CLASS	SEMI-D.	η UP,DN(C180-360)	9.6,40.9
LAMPS INSIDE	1	η up (%)	18.9	CIBSE SHR NOM	1.50
TEST VOLTAGE(V)		η down (%)	81.1	CIBSE SHR MAX	1.55

LUMINOUS INTENSITY DISTRIBUTION DIAGRAM



C0 PLANE ISOLUX DIAGRAM (UNIT:lx)



C Range: 0 - 360DEG
C Interval: 30.0DEG
Test Speed: HIGH
Temperature:25.3℃
Operators:
Test Date:2025-03-10

γ Range: 0 - 180DEG
 γ Interval: 1.0DEG
Test System:EVERFINE GO-2000B_V1 SYSTEM V2.00.488
Humidity:65.0%
Test Distance:6.360m [K=1.0000]
Remarks:

ZONAL FLUX DIAGRAM

ZONAL FLUX DIAGRAM:

γ	C0	C45	C90	C135	C180	C225	C270	C315	γ	Φ zone	Φ total	%lum, lamp
10	68.94	68.60	68.37	68.96	69.44	69.16	68.68	68.82	0- 10	6.619	6.619	2.01,2.01
20	67.09	65.64	64.36	66.08	67.55	66.52	65.04	66.14	10- 20	19.13	25.75	7.8,7.8
30	63.99	60.99	58.03	61.42	64.33	62.00	59.11	61.75	20- 30	29.52	55.26	16.7,16.7
40	59.99	54.95	49.89	55.25	59.95	55.97	51.29	55.96	30- 40	36.72	91.98	27.9,27.9
50	55.53	48.07	40.40	48.30	55.10	49.06	42.05	49.28	40- 50	40.24	132.2	40.1,40.1
60	50.64	40.91	30.16	40.95	49.82	41.61	31.94	42.26	50- 60	40.20	172.4	52.3,52.3
70	45.45	34.03	19.71	33.85	44.40	34.34	21.51	35.43	60- 70	37.20	209.6	63.5,63.5
80	39.65	27.65	9.774	27.41	38.75	27.67	11.48	29.02	70- 80	32.11	241.7	73.3,73.3
90	33.29	21.77	1.787	21.46	32.45	21.64	2.895	23.05	80- 90	25.84	267.6	81.1,81.1
100	26.74	16.15	1.891	16.45	26.10	16.54	2.826	17.32	90-100	19.86	287.4	87.1,87.1
110	20.20	11.40	2.056	12.59	20.45	12.67	2.823	12.61	100-110	14.70	302.1	91.6,91.6
120	15.23	8.895	2.143	9.615	15.51	9.777	2.728	9.661	110-120	10.54	312.7	94.8,94.8
130	11.50	6.982	2.134	7.158	11.55	7.415	2.583	7.343	120-130	7.360	320.0	97,97
140	8.511	4.768	2.149	5.225	8.455	5.403	2.427	4.968	130-140	4.797	324.8	98.4,98.4
150	5.664	3.348	2.175	3.713	5.582	3.755	2.328	3.409	140-150	2.787	327.6	99.3,99.3
160	3.694	2.592	2.221	2.735	3.326	2.636	2.267	2.509	150-160	1.472	329.1	99.7,99.7
170	2.165	2.233	2.221	2.243	2.238	2.210	2.212	2.230	160-170	0.6895	329.8	99.9,99.9
180	2.159	2.234	2.224	2.237	2.168	2.230	2.209	2.237	170-180	0.2114	330.0	100,100
DEG	LUMINOUS INTENSITY:cd									UNIT:lm		

Conical surface Flux(90deg): 111.89 lm

%lum = 33.9%

%lamp = 33.9%

Conical surface Flux(130deg): 191.55 lm

%lum = 58.0%

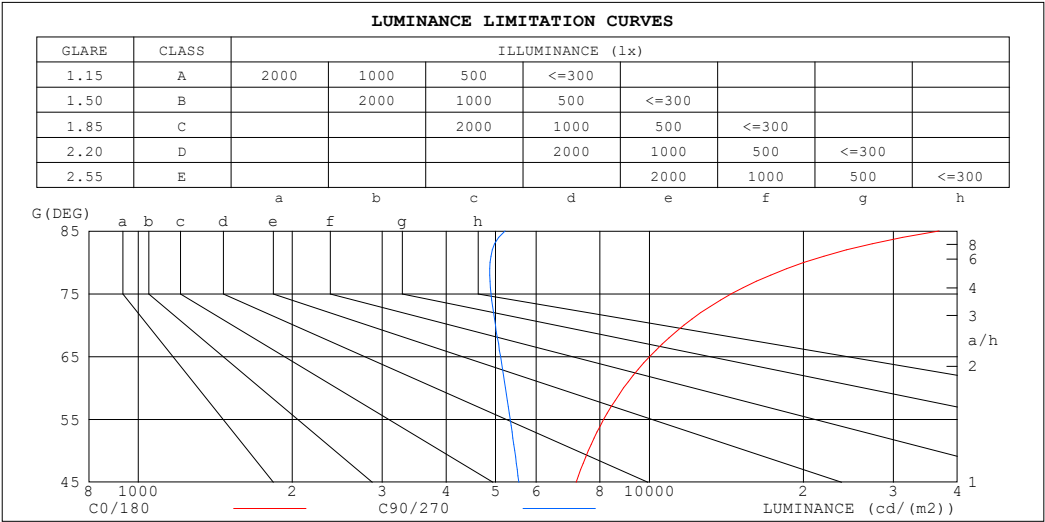
%lamp = 58.0%

C Range: 0 - 360DEG
 C Interval: 30.0DEG
 Test Speed: HIGH
 Temperature:25.3℃
 Operators:
 Test Date:2025-03-10

γ Range: 0 - 180DEG
 γ Interval: 1.0DEG
 Test System:EVERFINE GO-2000B_V1 SYSTEM V2.00.488
 Humidity:65.0%
 Test Distance:6.360m [K=1.0000]
 Remarks:

LUMINANCE LIMITATION CURVES

Test:U:24.00V I:0.7285A P:17.48W PF:1.000 Freq:0Hz Lamp Flux:329.99x1 lm		
NAME: SF21-24V-5050-60-RGBW(5000K)-ALL	TYPE:	WEIGHT:
SPEC.:	DIM.: Length=1m	SERIAL No.:
MFR.: OLympia lighting	SUR.:	Shielding Angle:



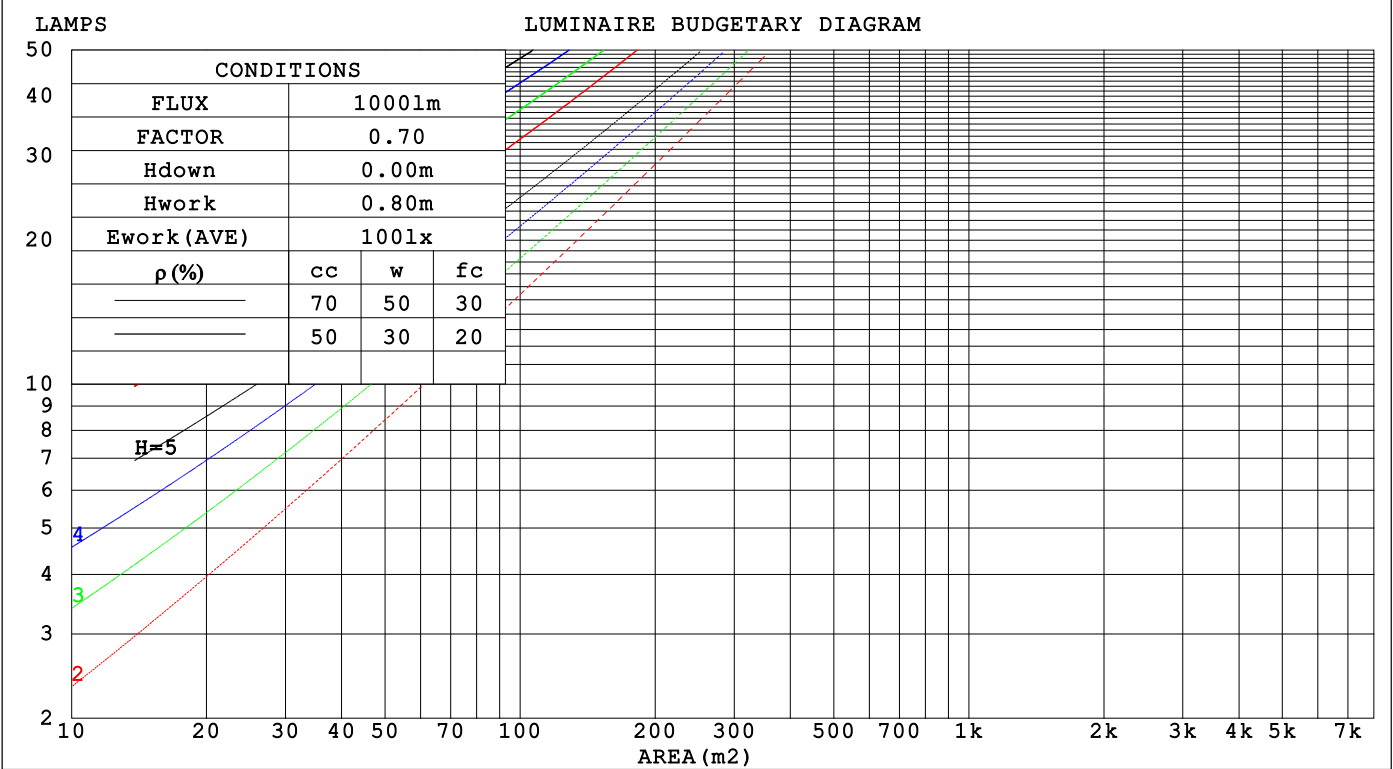
LUMINANCE cd/(m2)		
G (DEG)	C0/180	C90/270
85	36878	5221
80	20065	4878
75	14461	4899
70	11678	4994
65	10006	5110
60	8901	5227
55	8139	5340
50	7592	5448
45	7187	5550

C Range: 0 - 360DEG	γ Range: 0 - 180DEG
C Interval: 30.0DEG	γ Interval: 1.0DEG
Test Speed: HIGH	Test System:EVERFINE GO-2000B_V1 SYSTEM V2.00.488
Temperature:25.3℃	Humidity:65.0%
Operators:	Test Distance:6.360m [K=1.0000]
Test Date:2025-03-10	Remarks:

CU AND LUMINAIRE BUDGETARY ESTIMATE DIAGRAM

Test:U:24.00V I:0.7285A P:17.48W PF:1.000 Freq:0Hz Lamp Flux:329.99x1 lm		
NAME: SF21-24V-5050-60-RGBW(5000K)-ALL	TYPE:	WEIGHT:
SPEC.:	DIM.: Length=1m	SERIAL No.:
MFR.: OLYMPIA lighting	SUR.:	Shielding Angle:

pcc	80%			70%			50%			30%			10%			0
pw	50%	30%	10%	50%	30%	10%	50%	30%	10%	50%	30%	10%	50%	30%	10%	0
pfc	20%			20%			20%			20%			20%			0
RCR	RCR:Room Cavity Ratio			Coefficients of Utilization(CU)												
0.0	1.15	1.15	1.15	1.10	1.10	1.10	1.01	1.01	1.01	.92	.92	.92	.85	.85	.85	.81
1.0	.95	.90	.85	.91	.86	.82	.83	.79	.76	.76	.73	.70	.69	.67	.65	.61
2.0	.81	.73	.67	.78	.70	.64	.71	.65	.60	.65	.60	.56	.59	.55	.52	.48
3.0	.70	.61	.54	.67	.59	.52	.62	.55	.49	.56	.51	.46	.51	.47	.43	.40
4.0	.62	.52	.45	.59	.50	.44	.54	.47	.41	.50	.43	.38	.45	.40	.36	.33
5.0	.55	.45	.38	.53	.44	.37	.48	.41	.35	.44	.38	.33	.40	.35	.31	.28
6.0	.49	.40	.33	.47	.38	.32	.43	.36	.30	.40	.33	.29	.37	.31	.27	.24
7.0	.44	.35	.29	.43	.34	.28	.39	.32	.27	.36	.30	.25	.33	.28	.24	.21
8.0	.40	.31	.25	.39	.30	.25	.36	.29	.24	.33	.27	.22	.31	.25	.21	.19
9.0	.37	.28	.23	.35	.28	.22	.33	.26	.21	.30	.24	.20	.28	.23	.19	.17
10.0	.34	.26	.20	.33	.25	.20	.30	.24	.19	.28	.22	.18	.26	.21	.17	.15



C Range: 0 - 360DEG
C Interval: 30.0DEG
Test Speed: HIGH
Temperature:25.3℃
Operators:
Test Date:2025-03-10

γ Range: 0 - 180DEG
γ Interval: 1.0DEG
Test System:EVERFINE GO-2000B_V1 SYSTEM V2.00.488
Humidity:65.0%
Test Distance:6.360m [K=1.0000]
Remarks:

WEC AND CCEC

Test:U:24.00V I:0.7285A P:17.48W PF:1.000 Freq:0Hz Lamp Flux:329.99x1 lm		
NAME: SF21-24V-5050-60-RGBW(5000K)-ALL	TYPE:	WEIGHT:
SPEC.:	DIM.: Length=1m	SERIAL No.:
MFR.: OLympia lighting	SUR.:	Shielding Angle:

pcc	80%			70%			50%			30%			10%			0														
pw	50%	30%	10%	50%	30%	10%	50%	30%	10%	50%	30%	10%	50%	30%	10%	0														
pfc	20%			20%			20%			20%			20%			0														
RCR	RCR:Room Cavity Ratio															Wall Exitance Coefficients(WEC)														
0.0																														
1.0	.390	.222	.070	.377	.215	.068	.353	.202	.065	.330	.191	.061	.310	.179	.058															
2.0	.336	.184	.057	.324	.179	.055	.302	.168	.052	.282	.158	.050	.263	.149	.047															
3.0	.298	.158	.047	.287	.154	.046	.267	.145	.044	.249	.136	.042	.232	.128	.040															
4.0	.268	.139	.041	.258	.135	.040	.240	.127	.038	.223	.120	.036	.208	.113	.034															
5.0	.243	.124	.036	.234	.120	.035	.218	.113	.033	.203	.107	.032	.188	.101	.030															
6.0	.222	.112	.032	.215	.108	.031	.200	.102	.030	.186	.096	.028	.172	.091	.027															
7.0	.205	.101	.029	.198	.099	.028	.184	.093	.027	.171	.088	.026	.159	.083	.024															
8.0	.190	.093	.026	.183	.090	.026	.171	.085	.024	.159	.081	.023	.148	.076	.022															
9.0	.177	.086	.024	.171	.083	.023	.159	.079	.022	.148	.074	.021	.138	.070	.020															
10.0	.166	.079	.022	.160	.077	.022	.149	.073	.021	.139	.069	.020	.130	.065	.019															

pcc	80%			70%			50%			30%			10%			0
pw	50%	30%	10%	50%	30%	10%	50%	30%	10%	50%	30%	10%	50%	30%	10%	0
pfc	20%			20%			20%			20%			20%			0
RCR	RCR:Room Cavity Ratio						Ceiling Cavity Exitance Coefficients (CCEC)									
0.0	.335	.335	.335	.286	.286	.286	.195	.195	.195	.112	.112	.112	.036	.036	.036	
1.0	.331	.301	.273	.283	.258	.235	.194	.178	.163	.112	.103	.095	.036	.033	.031	
2.0	.324	.278	.239	.278	.239	.207	.190	.166	.144	.110	.096	.084	.035	.031	.028	
3.0	.317	.262	.217	.272	.226	.189	.187	.157	.132	.108	.092	.078	.035	.030	.026	
4.0	.309	.249	.203	.265	.215	.177	.182	.150	.124	.106	.088	.074	.034	.029	.024	
5.0	.301	.239	.194	.259	.207	.168	.178	.145	.119	.103	.085	.071	.033	.028	.023	
6.0	.294	.231	.187	.253	.200	.162	.174	.140	.115	.101	.083	.068	.033	.027	.023	
7.0	.287	.225	.181	.247	.195	.158	.170	.137	.112	.099	.080	.067	.032	.026	.022	
8.0	.280	.219	.177	.241	.190	.155	.167	.134	.110	.097	.079	.065	.031	.026	.022	
9.0	.274	.214	.174	.236	.186	.152	.163	.131	.108	.095	.077	.064	.031	.025	.021	
10.0	.268	.210	.172	.231	.183	.150	.160	.129	.107	.093	.076	.064	.030	.025	.021	

C Range: 0 - 360DEG
C Interval: 30.0DEG
Test Speed: HIGH
Temperature:25.3℃
Operators:
Test Date:2025-03-10

γ Range: 0 - 180DEG
γ Interval: 1.0DEG
Test System:EVERFINE GO-2000B_V1 SYSTEM V2.00.488
Humidity:65.0%
Test Distance:6.360m [K=1.0000]
Remarks:

UGR(Unified Glare Rating) Table

Test:U:24.00V I:0.7285A P:17.48W PF:1.000 Freq:0Hz Lamp Flux:329.99x1 lm											
NAME: SF21-24V-5050-60-RGBW(5000K)-ALL					TYPE:			WEIGHT:			
SPEC.:					DIM.: Length=1m			SERIAL No.:			
MFR.: OLympia lighting					SUR.:			Shielding Angle:			
ceiling/cavity	0.7	0.7	0.5	0.5	0.3	0.7	0.7	0.5	0.5	0.3	
walls	0.5	0.3	0.5	0.3	0.3	0.5	0.3	0.5	0.3	0.3	
working plane	0.2	0.2	0.2	0.2	0.2	0.2	0.2	0.2	0.2	0.2	
Room dimensions		Viewed crosswise					Viewed endwise				
x = 2H y = 2H	2H	23.7	25.0	24.2	25.5	26.1	21.5	22.9	22.0	23.4	24.0
	3H	26.4	27.7	27.0	28.2	28.9	23.2	24.4	23.7	25.0	25.6
	4H	28.0	29.2	28.5	29.7	30.4	23.9	25.1	24.5	25.7	26.3
	6H	29.7	30.8	30.3	31.4	32.1	24.6	25.7	25.1	26.3	26.9
	8H	30.6	31.7	31.2	32.3	33.0	24.8	25.9	25.4	26.5	27.2
	12H	31.7	32.8	32.3	33.4	34.1	25.0	26.1	25.6	26.7	27.4
4H	2H	24.2	25.4	24.8	26.0	26.6	22.6	23.9	23.2	24.4	25.1
	3H	27.2	28.3	27.8	28.9	29.6	24.6	25.6	25.2	26.2	26.9
	4H	29.0	29.9	29.6	30.6	31.3	25.5	26.5	26.1	27.1	27.8
	6H	30.9	31.8	31.5	32.4	33.2	26.3	27.2	27.0	27.9	28.6
	8H	31.9	32.8	32.6	33.4	34.2	26.7	27.5	27.4	28.2	28.9
	12H	33.2	33.9	33.9	34.6	35.4	27.0	27.7	27.7	28.4	29.2
8H	4H	29.3	30.1	30.0	30.8	31.6	26.6	27.4	27.2	28.0	28.8
	6H	31.5	32.2	32.2	32.9	33.7	27.8	28.4	28.5	29.1	30.0
	8H	32.8	33.4	33.5	34.2	35.0	28.3	28.9	29.0	29.7	30.5
	12H	34.3	34.8	35.0	35.6	36.4	28.8	29.4	29.6	30.1	31.0
12H	4H	29.3	30.1	30.0	30.8	31.6	26.9	27.7	27.6	28.4	29.2
	6H	31.7	32.3	32.4	33.0	33.8	28.3	29.0	29.1	29.7	30.5
	8H	33.1	33.6	33.8	34.3	35.2	29.1	29.6	29.8	30.3	31.2
Variations with the observer position at spacings(CIE Pub.117):											
S = 1.0H		+ 0.1 / - 0.1					+ 0.1 / - 0.1				
1.5H		+ 0.2 / - 0.2					+ 0.2 / - 0.3				
2.0H		+ 0.2 / - 0.3					+ 0.2 / - 0.4				

CIE Pub.117, 330.0 lm Total Lamp Luminous Flux Correct (8log(F/F0) = -3.9)
Area: 0.0115 m2

C Range: 0 - 360DEG
C Interval: 30.0DEG
Test Speed: HIGH
Temperature:25.3℃
Operators:
Test Date:2025-03-10

γ Range: 0 - 180DEG
γ Interval: 1.0DEG
Test System:EVERFINE GO-2000B_V1 SYSTEM V2.00.488
Humidity:65.0%
Test Distance:6.360m [K=1.0000]
Remarks:

UTILIZATION FACTORS TABLE

Test:U:24.00V I:0.7285A P:17.48W PF:1.000 Freq:0Hz Lamp Flux:329.99x1 lm		
NAME: SF21-24V-5050-60-RGBW(5000K)-ALL	TYPE:	WEIGHT:
SPEC.:	DIM.: Length=1m	SERIAL No.:
MFR.: OLympia lighting	SUR.:	Shielding Angle:

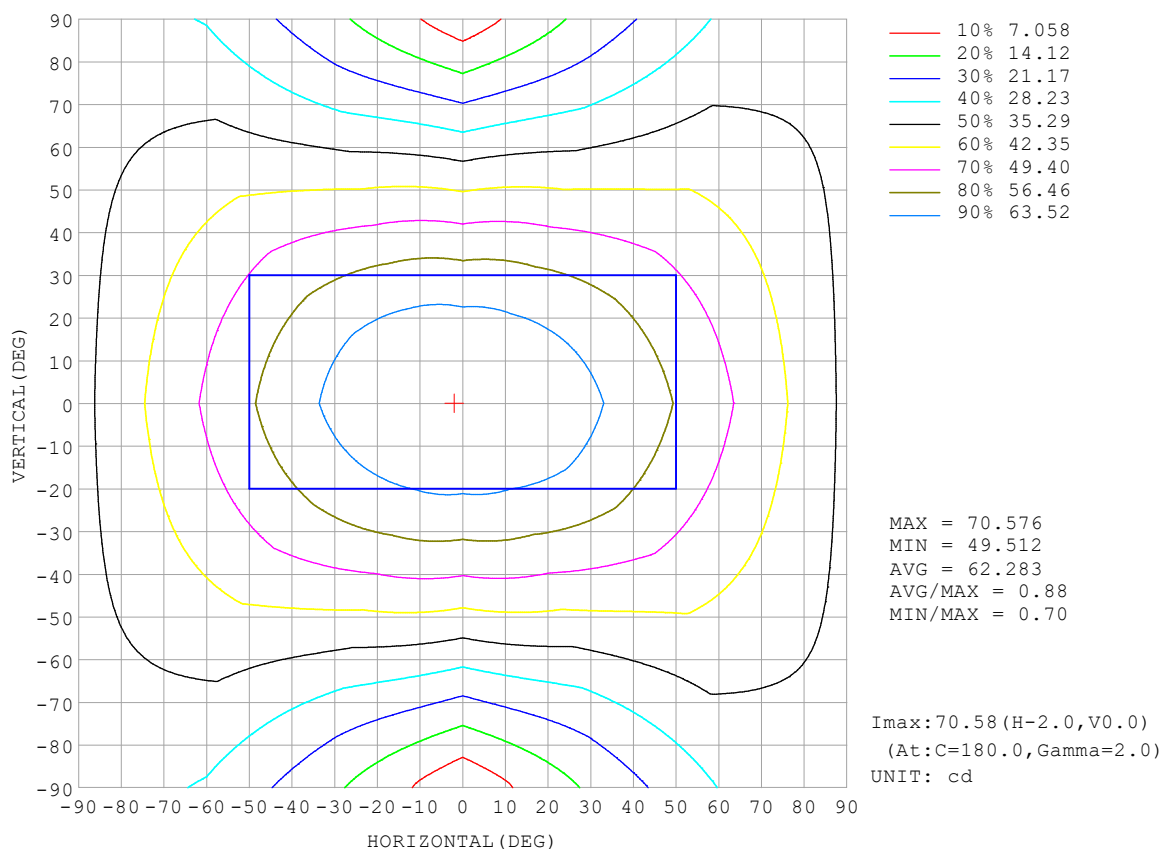
REFLECTANCE										
Ceiling	0.8	0.8	0.8	0.7	0.7	0.7	0.5	0.5	0.5	0
Walls	0.7	0.5	0.3	0.7	0.5	0.3	0.7	0.5	0.3	0
Working plane	0.2	0.2	0.2	0.2	0.2	0.2	0.2	0.2	0.2	0
ROOM INDEX	UTILIZATION FACTORS (PERCENT) $k(RI) \times RCR = 5$									
$k = 0.60$	47	35	28	46	34	27	44	33	27	20
0.80	56	43	35	55	43	35	52	41	34	26
1.00	64	51	43	62	50	42	58	50	41	32
1.25	71	58	50	69	57	49	64	54	47	37
1.50	76	64	55	73	62	54	68	59	52	41
2.00	83	72	64	80	70	62	74	66	59	47
2.50	88	77	69	84	75	68	78	70	64	51
3.00	92	82	75	88	79	73	81	74	68	55
4.00	96	88	82	92	85	79	85	79	74	60
5.00	99	92	86	95	89	83	88	83	78	63
ROOM INDEX	UF (total)									Direct
According to DIN EN 13032-2 2004			Suspended					SHRNOM = 1.25		

C Range: 0 - 360DEG
 C Interval: 30.0DEG
 Test Speed: HIGH
 Temperature: 25.3°C
 Operators:
 Test Date: 2025-03-10

γ Range: 0 - 180DEG
 γ Interval: 1.0DEG
 Test System: EVERFINE GO-2000B_V1 SYSTEM V2.00.488
 Humidity: 65.0%
 Test Distance: 6.360m [K=1.0000]
 Remarks:

ISOCANDELA DIAGRAM

Test:U:24.00V I:0.7285A P:17.48W PF:1.000 Freq:0Hz Lamp Flux:329.99x1 lm		
NAME: SF21-24V-5050-60-RGBW(5000K)-ALL	TYPE:	WEIGHT:
SPEC.:	DIM.: Length=1m	SERIAL No.:
MFR.: OLympia lighting	SUR.:	Shielding Angle:

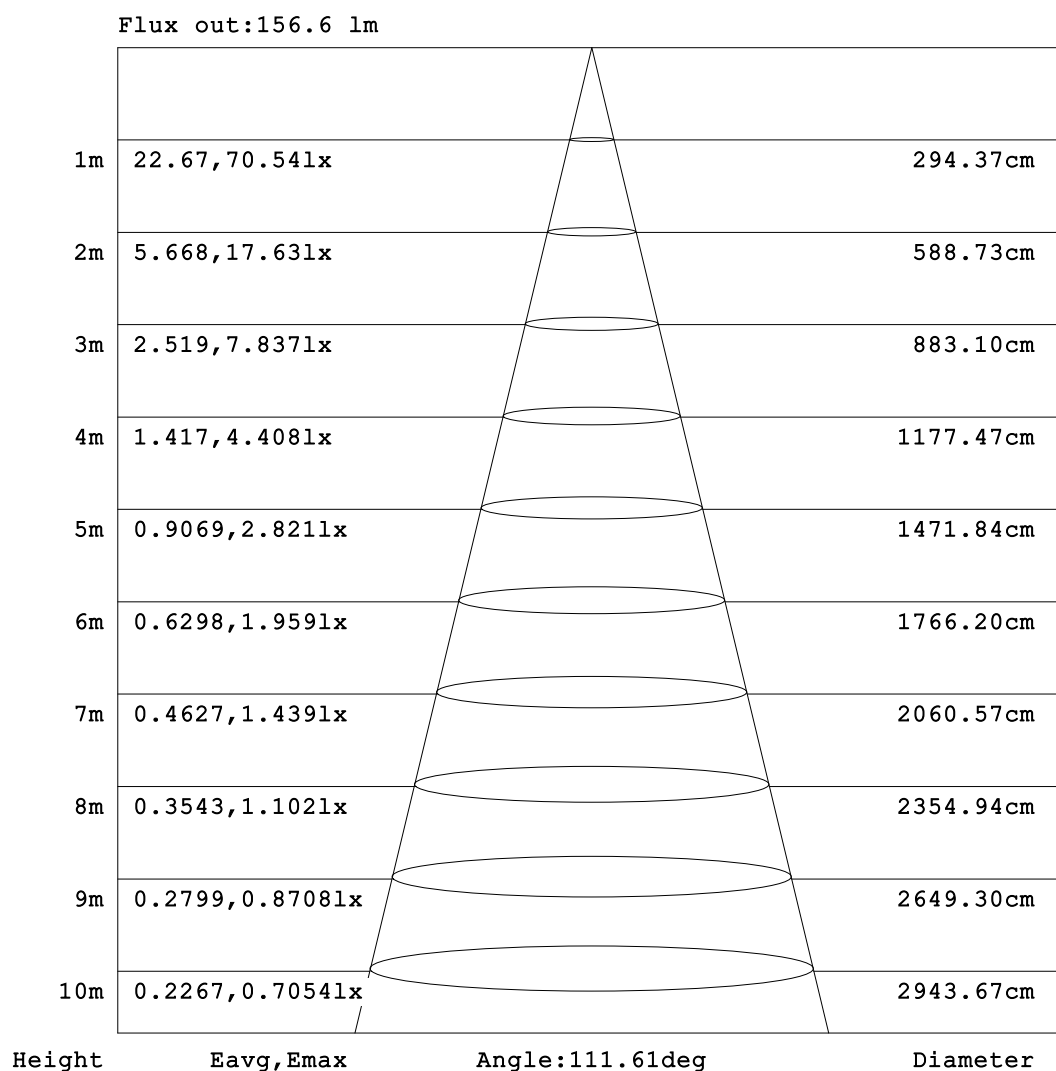


C Range: 0 - 360DEG
C Interval: 30.0DEG
Test Speed: HIGH
Temperature:25.3℃
Operators:
Test Date:2025-03-10

γ Range: 0 - 180DEG
γ Interval: 1.0DEG
Test System:EVERFINE GO-2000B_V1 SYSTEM V2.00.488
Humidity:65.0%
Test Distance:6.360m [K=1.0000]
Remarks:

AAI Figure

Test:U:24.00V I:0.7285A P:17.48W PF:1.000 Freq:0Hz Lamp Flux:329.99x1 lm		
NAME: SF21-24V-5050-60-RGBW(5000K)-ALL	TYPE:	WEIGHT:
SPEC.:	DIM.: Length=1m	SERIAL No.:
MFR.: OLympia lighting	SUR.:	Shielding Angle:



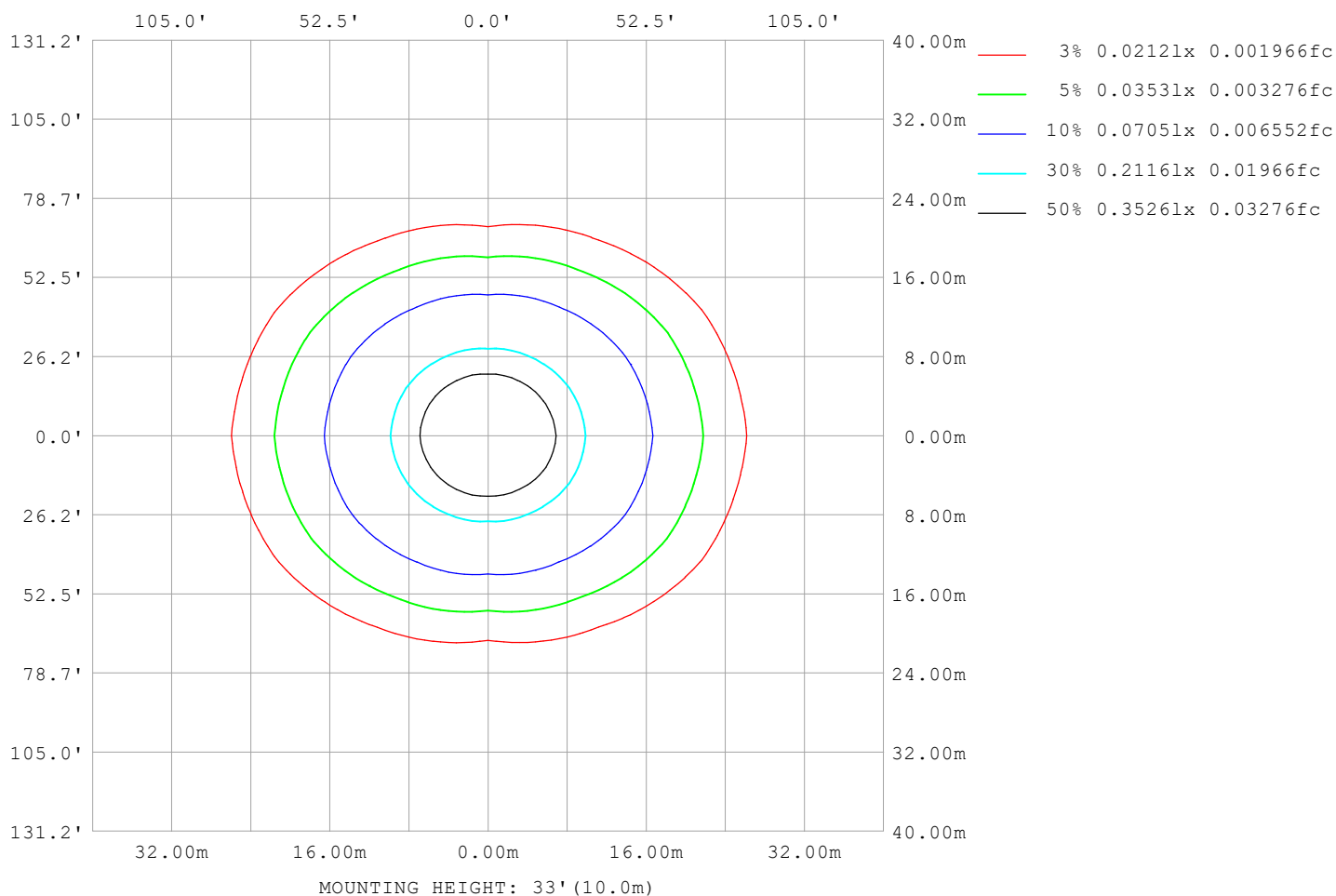
Note:The Curves indicate the illuminated area and the average illumination when the luminaire is at different distance.

C Range: 0 - 360DEG
C Interval: 30.0DEG
Test Speed: HIGH
Temperature:25.3℃
Operators:
Test Date:2025-03-10

γ Range: 0 - 180DEG
γ Interval: 1.0DEG
Test System:EVERFINE GO-2000B_V1 SYSTEM V2.00.488
Humidity:65.0%
Test Distance:6.360m [K=1.0000]
Remarks:

ISOLUX DIAGRAM

Test:U:24.00V I:0.7285A P:17.48W PF:1.000 Freq:0Hz Lamp Flux:329.99x1 lm		
NAME: SF21-24V-5050-60-RGBW(5000K)-ALL	TYPE:	WEIGHT:
SPEC.:	DIM.: Length=1m	SERIAL No.:
MFR.: OLympia lighting	SUR.:	Shielding Angle:



C Range: 0 - 360DEG
C Interval: 30.0DEG
Test Speed: HIGH
Temperature: 25.3°C
Operators:
Test Date: 2025-03-10

γ Range: 0 - 180DEG
γ Interval: 1.0DEG
Test System: EVERFINE GO-2000B_V1 SYSTEM V2.00.488
Humidity: 65.0%
Test Distance: 6.360m [K=1.0000]
Remarks:

LED Avg.L Report

Test:U:24.00V I:0.7285A P:17.48W PF:1.000 Freq:0Hz Lamp Flux:329.99x1 lm		
NAME: SF21-24V-5050-60-RGBW(5000K)-ALL	TYPE:	WEIGHT:
SPEC.:	DIM.: Length=1m	SERIAL No.:
MFR.: OLympia lighting	SUR.:	Shielding Angle:

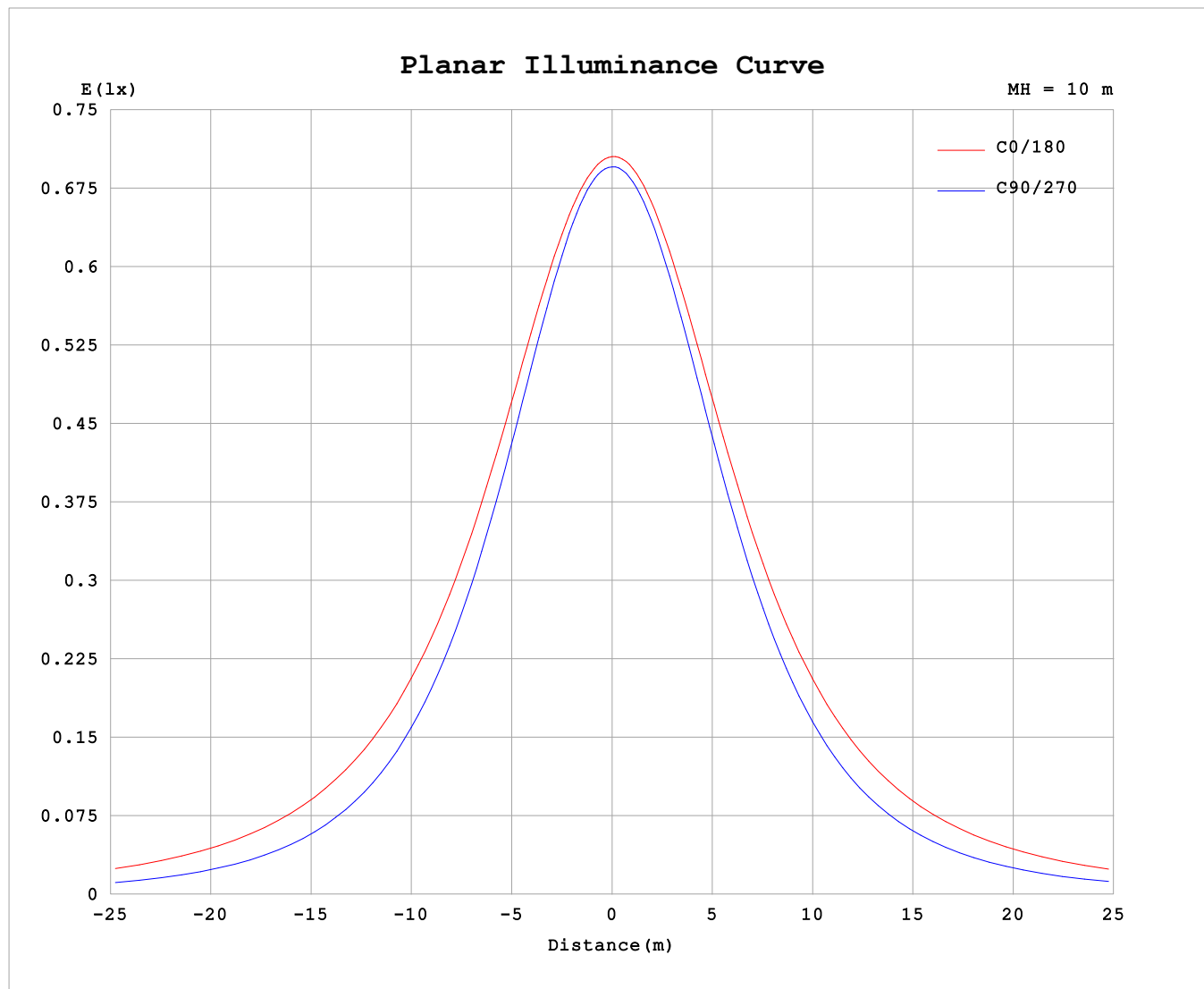
AvgL	cd/m2
L_0~180 (65) av	9798
L_0~180 (75) av	14147
L_0~180 (85) av	36056
L_90~270 (65) av	5313
L_90~270 (75) av	5212
L_90~270 (85) av	6046
L_45 (65) av	7824
L_45 (75) av	10539
L_45 (85) av	25330

Standard: GB/T 29293-2012

C Range: 0 - 360DEG
C Interval: 30.0DEG
Test Speed: HIGH
Temperature:25.3℃
Operators:
Test Date:2025-03-10

γ Range: 0 - 180DEG
γ Interval: 1.0DEG
Test System:EVERFINE GO-2000B_V1 SYSTEM V2.00.488
Humidity:65.0%
Test Distance:6.360m [K=1.0000]
Remarks:

Planar Illuminance Curve



C Range: 0 - 360DEG
C Interval: 30.0DEG
Test Speed: HIGH
Temperature: 25.3 °C
Operators:
Test Date: 2025-03-10

γ Range: 0 - 180DEG
 γ Interval: 1.0DEG
Test System: EVERFINE GO-2000B_V1 SYSTEM V2.00.488
Humidity: 65.0%
Test Distance: 6.360m [K=1.0000]
Remarks:

LUMINOUS DISTRIBUTION INTENSITY DATA

Test:U:24.00V I:0.7285A P:17.48W PF:1.000 Freq:0Hz Lamp Flux:329.99x1 lm		
NAME: SF21-24V-5050-60-RGBW(5000K)-ALL	TYPE:	WEIGHT:
SPEC.:	DIM.: Length=1m	SERIAL No.:
MFR.: Olym pia lighting	SUR.:	Shielding Angle:

Table--1

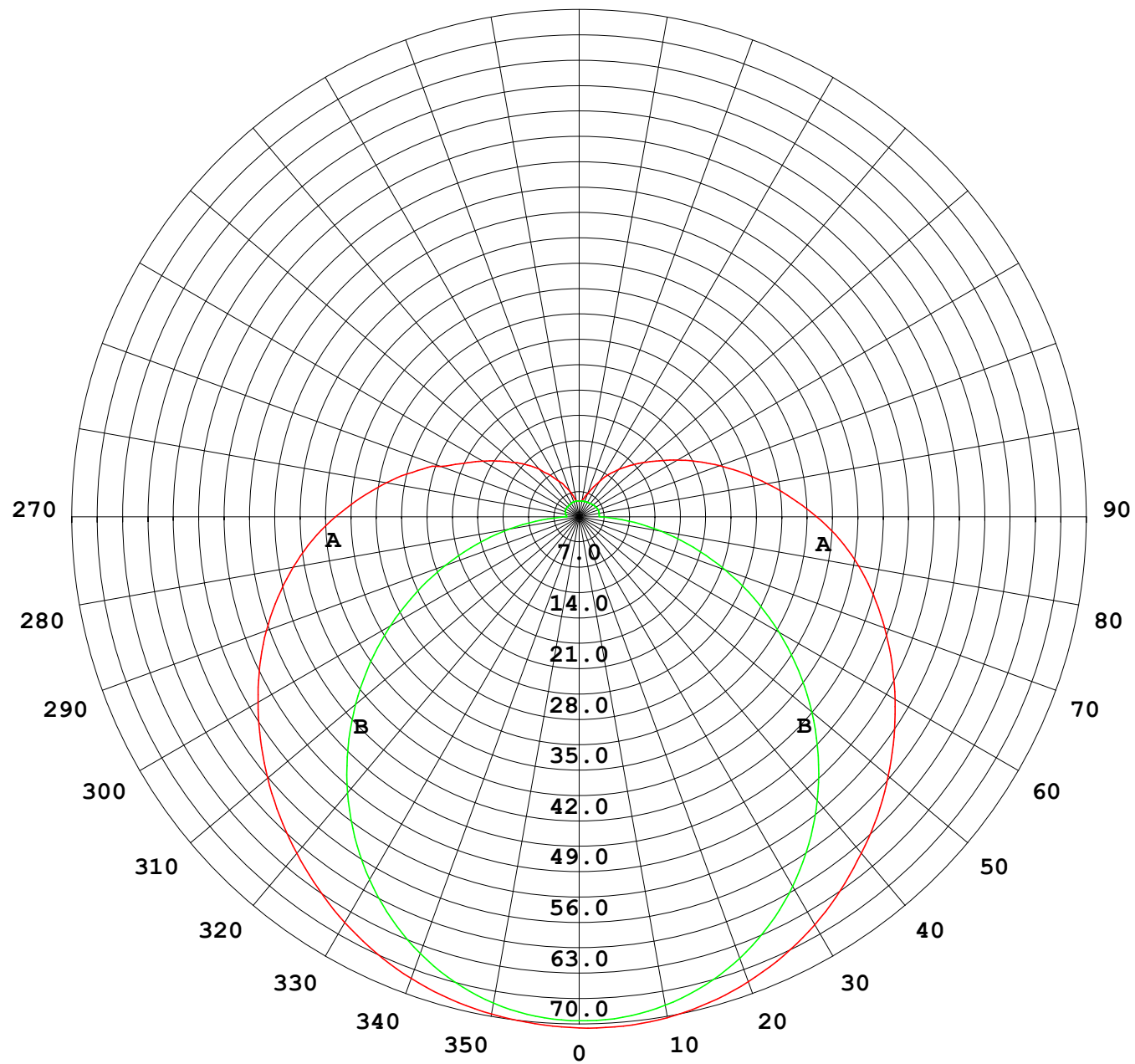
UNIT: cd

C (DEG) γ (DEG)	0	30	60	90	120	150	180	210	240	270	300	330							
0	69.8	69.8	69.8	69.8	69.8	69.8	69.8	69.8	69.8	69.8	69.8	69.8							
5	69.5	69.5	69.4	69.4	69.6	69.7	69.8	69.8	69.6	69.6	69.5	69.5							
10	68.9	68.8	68.4	68.4	68.7	69.2	69.4	69.3	69.0	68.7	68.7	68.9							
15	68.2	67.8	66.9	66.7	67.3	68.2	68.7	68.4	67.7	67.2	67.4	68.0							
20	67.1	66.4	64.8	64.4	65.3	66.8	67.6	67.1	65.9	65.0	65.6	66.7							
25	65.7	64.7	62.3	61.4	62.8	65.0	66.1	65.3	63.6	62.3	63.3	65.0							
30	64.0	62.6	59.4	58.0	59.9	62.9	64.3	63.2	60.8	59.1	60.5	63.0							
35	62.1	60.2	56.1	54.2	56.6	60.4	62.2	60.8	57.5	55.4	57.3	60.7							
40	60.0	57.5	52.4	49.9	52.8	57.7	60.0	58.0	53.9	51.3	53.8	58.1							
45	57.8	54.7	48.4	45.3	48.9	54.9	57.7	55.1	50.0	46.8	50.0	55.4							
50	55.5	51.9	44.3	40.4	44.7	51.9	55.1	52.3	45.9	42.1	46.0	52.6							
55	53.1	48.9	40.0	35.3	40.4	48.8	52.5	49.1	41.6	37.1	41.8	49.8							
60	50.6	46.0	35.8	30.2	36.2	45.7	49.8	45.9	37.3	31.9	37.6	46.9							
65	48.1	43.1	31.7	24.9	32.1	42.6	47.1	42.8	33.1	26.7	33.6	44.0							
70	45.4	40.2	27.8	19.7	28.1	39.6	44.4	39.7	28.9	21.5	29.7	41.2							
75	42.6	37.3	24.2	14.6	24.4	36.7	41.6	36.7	25.1	16.4	26.1	38.3							
80	39.6	34.3	21.0	9.77	21.0	33.8	38.8	33.8	21.6	11.5	22.8	35.3							
85	36.6	31.3	18.0	5.25	18.0	30.8	35.7	30.7	18.4	6.87	19.7	32.3							
90	33.3	28.2	15.3	1.79	15.3	27.7	32.4	27.6	15.6	2.89	16.9	29.2							
95	29.9	25.2	13.0	1.82	13.0	24.7	29.2	24.6	13.2	2.79	14.5	26.1							
100	26.7	22.4	9.92	1.89	11.1	21.9	26.1	21.7	11.3	2.83	11.5	23.2							
105	23.6	19.3	7.95	1.97	9.51	19.3	23.2	19.2	9.74	2.83	9.13	20.0							
110	20.2	16.0	6.77	2.06	8.29	16.9	20.4	16.8	8.55	2.82	7.97	17.3							
115	17.4	13.9	6.39	2.11	7.30	14.7	17.9	14.6	7.60	2.78	7.33	15.0							
120	15.2	12.1	5.72	2.14	6.42	12.8	15.5	12.8	6.75	2.73	6.25	13.1							
125	13.3	10.6	5.04	2.14	5.55	11.1	13.4	11.2	5.94	2.66	5.48	11.4							
130	11.5	9.44	4.51	2.13	4.77	9.55	11.6	9.71	5.11	2.58	4.79	9.90							
135	10.0	7.62	3.93	2.13	4.10	8.17	9.94	8.32	4.36	2.50	4.27	8.55							
140	8.51	6.09	3.44	2.15	3.57	6.89	8.46	7.05	3.75	2.43	3.65	6.29							
145	6.97	4.77	2.90	2.16	3.18	5.71	7.07	5.85	3.32	2.36	3.17	5.18							
150	5.66	4.14	2.56	2.17	2.79	4.63	5.58	4.70	2.80	2.33	2.75	4.07							
155	4.64	3.43	2.37	2.22	2.46	3.79	4.35	3.78	2.46	2.31	2.46	3.21							
160	3.69	2.89	2.30	2.22	2.31	3.16	3.33	3.00	2.27	2.27	2.28	2.74							
165	2.83	2.39	2.23	2.22	2.24	2.49	2.65	2.45	2.20	2.24	2.23	2.24							
170	2.17	2.24	2.23	2.22	2.22	2.26	2.24	2.23	2.19	2.21	2.22	2.24							
175	2.15	2.24	2.23	2.22	2.22	2.25	2.17	2.21	2.21	2.20	2.23	2.24							
180	2.16	2.24	2.23	2.22	2.22	2.25	2.17	2.23	2.23	2.21	2.23	2.24							

C Range: 0 - 360DEG
C Interval: 30.0DEG
Test Speed: HIGH
Temperature:25.3℃
Operators:
Test Date:2025-03-10

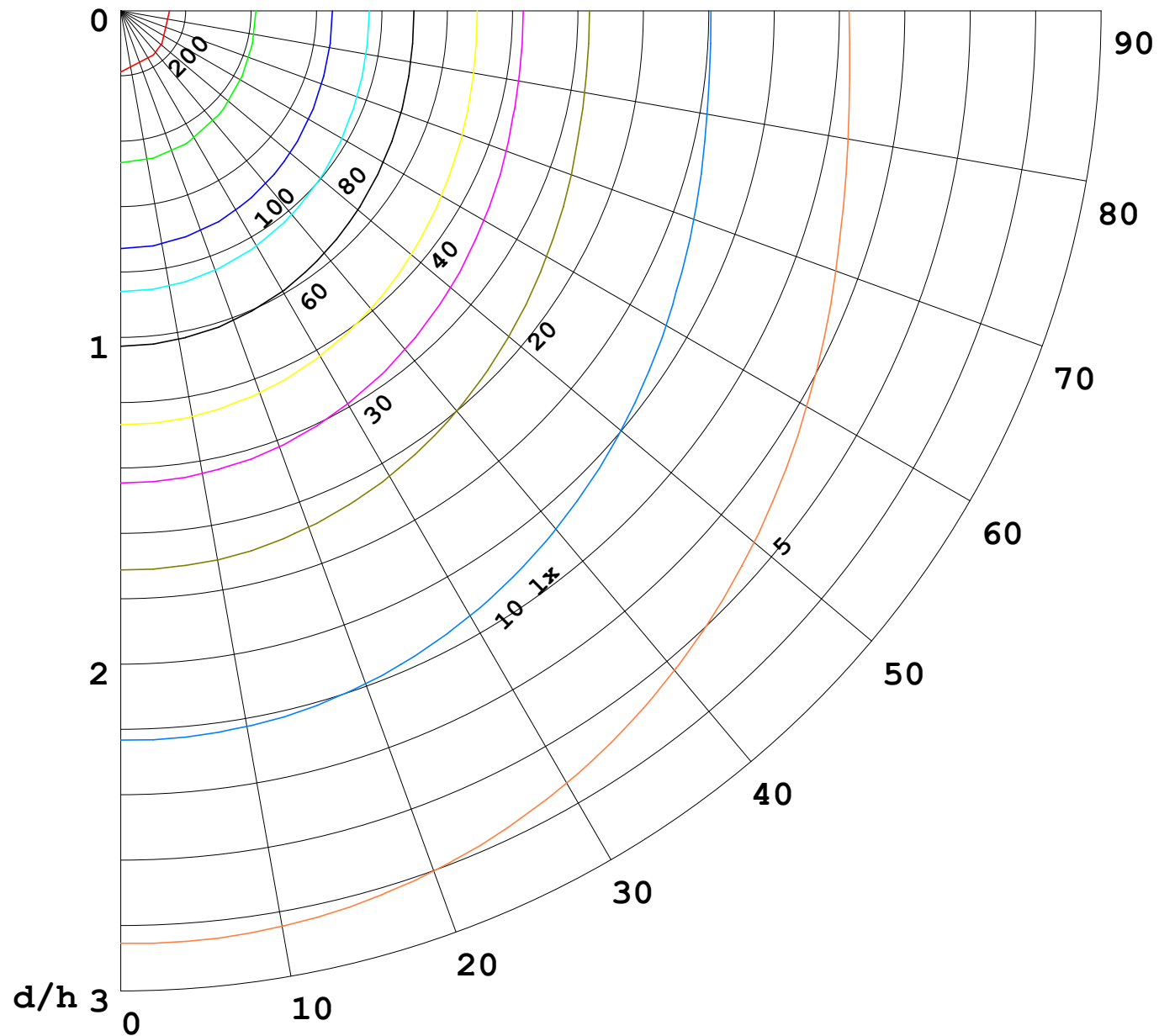
γ Range: 0 - 180DEG
γ Interval: 1.0DEG
Test System:EVERFINE GO-2000B_V1 SYSTEM V2.00.488
Humidity:65.0%
Test Distance:6.360m [K=1.0000]
Remarks:

I (cd)



1000 lm

$\kappa = 1$



F = 1000 lm
 K = 0.7
 Hcc = 0.8 m
 Hfc = 0.0 m
 Eave = 100 lx

	Pcc	Pw	Pfc
—————	70	50	30
—————	50	30	20

