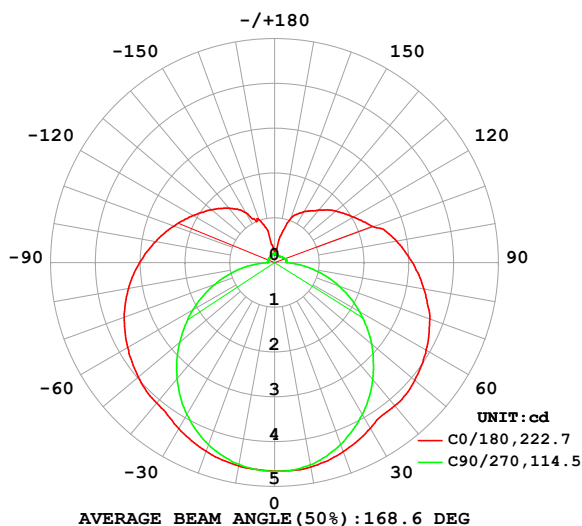


## LUMINAIRE PHOTOMETRIC TEST REPORT

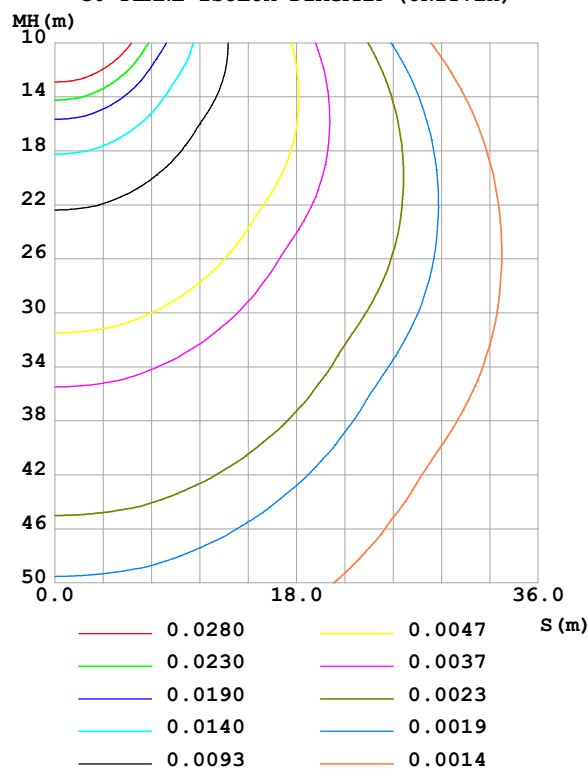
Test:U:24.00V I:0.1605A P:3.852W PF:1.000 Freq:0Hz Lamp Flux:27.3783x1 lm		
NAME: SF21-24V-5050-60-RGBW(4000)	TYPE:	WEIGHT:
SPEC.:	DIM.: Length=1m	SERIAL No.:
MFR.:	SUR.:	Shielding Angle:

DATA OF LAMP		PHOTOMETRIC DATA				Eff: 7.11 lm/W
MODEL		I <sub>max</sub> (cd)	4.665	S/MH(C0/180)	1.38	
NOMINAL POWER(W)		LOR(%)	100.0	S/MH(C90/270)	1.25	
RATED VOLTAGE(V)		TOTAL FLUX(lm)	27.378	η UP,DN(C0-180)	14.6,35.3	
NOMINAL FLUX(lm)	27.3783	CIE CLASS	SEMI-D.	η UP,DN(C180-360)	14.6,35.4	
LAMPS INSIDE	1	η up (%)	29.3	CIBSE SHR NOM	1.50	
TEST VOLTAGE(V)		η down (%)	70.7	CIBSE SHR MAX	1.55	

LUMINOUS INTENSITY DISTRIBUTION DIAGRAM



C0 PLANE ISOLUX DIAGRAM (UNIT:lx)



C Range: 0 - 360DEG  
C Interval: 22.5DEG  
Test Speed: HIGH  
Temperature: 25.3 °C  
Operators: Cloud  
Test Date: 2024-10-08

γ Range: 0 - 180DEG  
γ Interval: 1.0DEG  
Test System: EVERFINE GO-2000B\_V1 SYSTEM V2.00.488  
Humidity: 65.0%  
Test Distance: 6.360m [K=1.0000]  
Remarks: BLUE

## ZONAL FLUX DIAGRAM

## ZONAL FLUX DIAGRAM:

$\gamma$	C0	C45	C90	C135	C180	C225	C270	C315	$\gamma$	$\Phi$ zone	$\Phi$ total	%lum, lamp
10	4.639	4.627	4.587	4.593	4.610	4.587	4.575	4.601	0- 10	0.4424	0.4424	1.62,1.62
20	4.492	4.437	4.321	4.394	4.480	4.410	4.323	4.417	10- 20	1.278	1.720	6.28,6.28
30	4.273	4.119	3.920	4.077	4.281	4.104	3.919	4.117	20- 30	1.969	3.690	13.5,13.5
40	4.174	3.727	3.411	3.677	4.099	3.711	3.392	3.722	30- 40	2.458	6.147	22.5,22.5
50	4.085	3.403	2.833	3.314	3.975	3.362	2.765	3.388	40- 50	2.759	8.907	32.5,32.5
60	3.906	3.082	2.200	2.959	3.791	3.018	2.103	3.083	50- 60	2.869	11.78	43,43
70	3.690	2.739	1.532	2.591	3.574	2.654	1.421	2.717	60- 70	2.788	14.56	53.2,53.2
80	3.384	2.415	0.8735	2.271	3.314	2.325	0.7535	2.383	70- 80	2.561	17.12	62.5,62.5
90	3.081	2.115	0.2661	1.988	3.014	2.042	0.1532	2.092	80- 90	2.240	19.37	70.7,70.7
100	2.770	1.892	0.2630	1.769	2.703	1.817	0.1619	1.869	90-100	1.947	21.31	77.8,77.8
110	2.349	1.499	0.2602	1.605	2.394	1.626	0.1619	1.298	100-110	1.649	22.96	83.9,83.9
120	2.040	1.349	0.2198	1.478	2.106	1.496	0.1619	1.299	110-120	1.363	24.32	88.8,88.8
130	1.795	1.113	0.1995	1.354	1.843	1.366	0.1619	1.075	120-130	1.107	25.43	92.9,92.9
140	1.529	0.8928	0.1821	1.187	1.586	1.195	0.1705	0.9333	130-140	0.8467	26.28	96,96
150	1.313	0.7253	0.1792	1.037	1.295	1.037	0.1763	0.7432	140-150	0.5769	26.86	98.1,98.1
160	1.036	0.5028	0.1792	0.8156	1.024	0.8086	0.1937	0.5069	150-160	0.3390	27.19	99.3,99.3
170	0.3194	0.4045	0.1879	0.5305	0.4182	0.5282	0.2081	0.3887	160-170	0.1520	27.35	99.9,99.9
180	0.2077	0.2109	0.2023	0.2132	0.2250	0.2080	0.2081	0.2132	170-180	0.0318	27.38	100,100
DEG	LUMINOUS INTENSITY:cd									UNIT:lm		

Conical surface Flux(90deg): 7.5005 lm

%lum = 27.4%

%lamp = 27.4%

Conical surface Flux(130deg): 13.189 lm

%lum = 48.2%

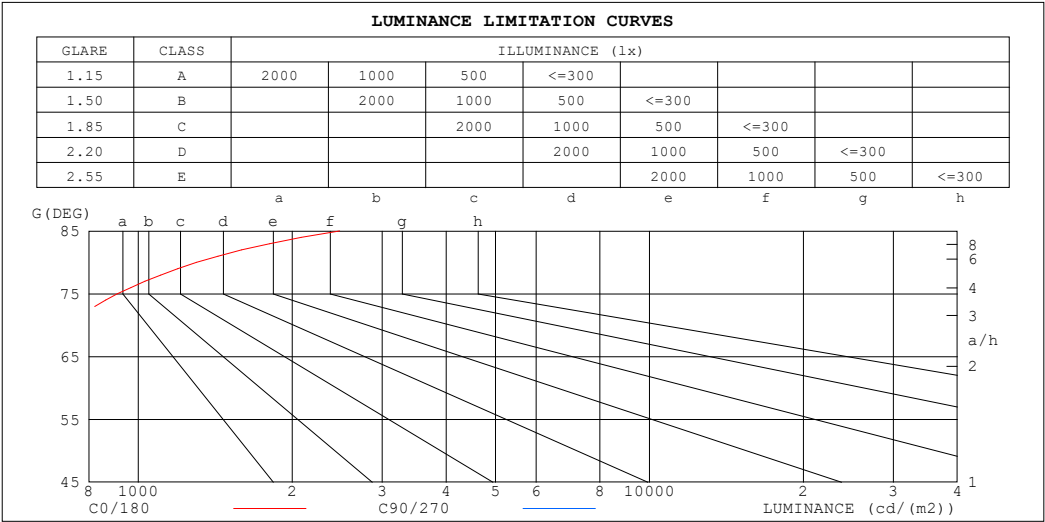
%lamp = 48.2%

C Range: 0 - 360DEG  
 C Interval: 22.5DEG  
 Test Speed: HIGH  
 Temperature:25.3℃  
 Operators:Cloud  
 Test Date:2024-10-08

$\gamma$  Range: 0 - 180DEG  
 $\gamma$  Interval: 1.0DEG  
 Test System:EVERFINE GO-2000B\_V1 SYSTEM V2.00.488  
 Humidity:65.0%  
 Test Distance:6.360m [K=1.0000]  
 Remarks: BLUE

LUMINANCE LIMITATION CURVES

Test:U:24.00V I:0.1605A P:3.852W PF:1.000 Freq:0Hz Lamp Flux:27.3783x1 lm		
NAME: SF21-24V-5050-60-RGBW(4000)	TYPE:	WEIGHT:
SPEC.:	DIM.: Length=1m	SERIAL No.:
MFR.:	SUR.:	Shielding Angle:



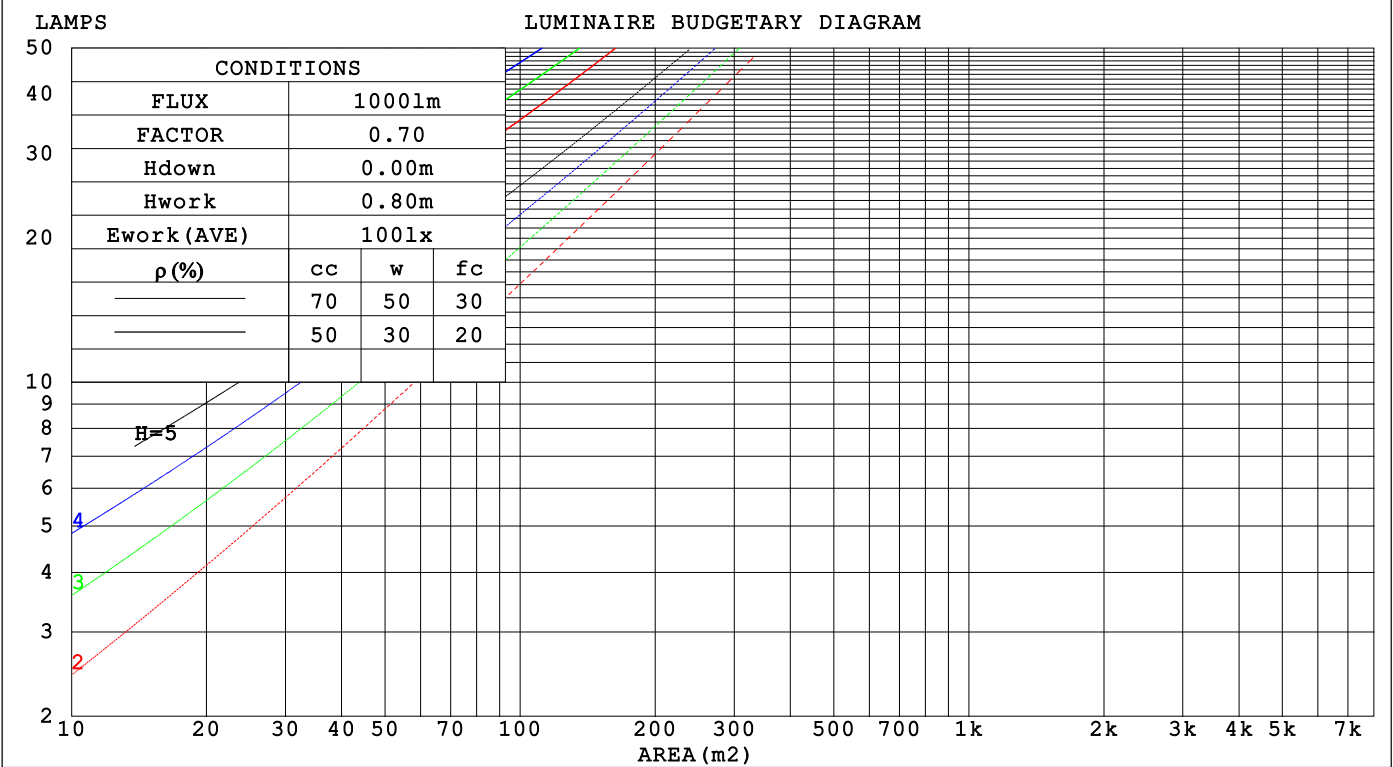
LUMINANCE cd/(m2)		
G (DEG)	C0/180	C90/270
85	2475	413
80	1300	335
75	910	309
70	720	298
65	600	293
60	521	293
55	466	292
50	424	293
45	392	294

C Range: 0 - 360DEG	γ Range: 0 - 180DEG
C Interval: 22.5DEG	γ Interval: 1.0DEG
Test Speed: HIGH	Test System:EVERFINE GO-2000B_V1 SYSTEM V2.00.488
Temperature:25.3℃	Humidity:65.0%
Operators:Cloud	Test Distance:6.360m [K=1.0000]
Test Date:2024-10-08	Remarks: BLUE

CU AND LUMINAIRE BUDGETARY ESTIMATE DIAGRAM

Test:U:24.00V I:0.1605A P:3.852W PF:1.000 Freq:0Hz																	
Lamp Flux:27.3783x1 lm																	
NAME: SF21-24V-5050-60-RGBW(4000)									TYPE:			WEIGHT:					
SPEC.:									DIM.: Length=1m			SERIAL No.:					
MFR.:									SUR.:			Shielding Angle:					

pcc	80%			70%			50%			30%			10%			0
pw	50%	30%	10%	50%	30%	10%	50%	30%	10%	50%	30%	10%	50%	30%	10%	0
pfc	20%			20%			20%			20%			20%			0
RCR	RCR:Room Cavity Ratio                      Coefficients of Utilization(CU)															
0.0	1.12	1.12	1.12	1.06	1.06	1.06	.95	.95	.95	.85	.85	.85	.75	.75	.75	.71
1.0	.93	.87	.82	.87	.82	.78	.78	.74	.70	.69	.66	.63	.60	.58	.56	.52
2.0	.79	.71	.64	.74	.67	.61	.66	.60	.55	.58	.54	.50	.51	.48	.44	.41
3.0	.68	.59	.52	.64	.56	.50	.57	.51	.45	.50	.45	.41	.44	.40	.36	.33
4.0	.60	.50	.43	.56	.48	.41	.50	.43	.38	.44	.39	.34	.39	.34	.30	.27
5.0	.53	.43	.37	.50	.41	.35	.45	.37	.32	.40	.34	.29	.35	.30	.26	.23
6.0	.47	.38	.31	.45	.36	.30	.40	.33	.28	.36	.30	.25	.31	.26	.23	.20
7.0	.43	.34	.27	.40	.32	.26	.36	.29	.24	.32	.26	.22	.29	.24	.20	.17
8.0	.39	.30	.24	.37	.29	.23	.33	.26	.21	.29	.24	.19	.26	.21	.18	.15
9.0	.35	.27	.21	.34	.26	.21	.30	.24	.19	.27	.21	.17	.24	.19	.16	.14
10.0	.32	.24	.19	.31	.23	.18	.28	.21	.17	.25	.20	.16	.22	.18	.14	.12



C Range: 0 - 360DEG  
C Interval: 22.5DEG  
Test Speed: HIGH  
Temperature:25.3℃  
Operators:Cloud  
Test Date:2024-10-08

γ Range: 0 - 180DEG  
γ Interval: 1.0DEG  
Test System:EVERFINE GO-2000B\_V1 SYSTEM V2.00.488  
Humidity:65.0%  
Test Distance:6.360m [K=1.0000]  
Remarks: BLUE

## WEC AND CCEC

Test:U:24.00V I:0.1605A P:3.852W PF:1.000 Freq:0Hz Lamp Flux:27.3783x1 lm		
NAME: SF21-24V-5050-60-RGBW(4000)	TYPE:	WEIGHT:
SPEC.:	DIM.: Length=1m	SERIAL No.:
MFR.:	SUR.:	Shielding Angle:

pcc	80%			70%			50%			30%			10%			0														
pw	50%	30%	10%	50%	30%	10%	50%	30%	10%	50%	30%	10%	50%	30%	10%	0														
pfc	20%			20%			20%			20%			20%			0														
RCR	RCR:Room Cavity Ratio															Wall Exitance Coefficients(WEC)														
0.0																														
1.0	.393	.223	.071	.377	.215	.068	.346	.199	.063	.318	.184	.059	.293	.170	.055															
2.0	.335	.184	.056	.321	.177	.054	.293	.163	.051	.268	.150	.047	.244	.138	.044															
3.0	.296	.157	.047	.283	.151	.046	.258	.140	.042	.234	.128	.039	.213	.118	.037															
4.0	.265	.138	.041	.253	.133	.039	.230	.122	.036	.209	.112	.034	.190	.103	.031															
5.0	.241	.123	.036	.229	.118	.034	.209	.109	.032	.189	.100	.030	.171	.091	.027															
6.0	.220	.110	.032	.210	.106	.031	.191	.098	.028	.173	.090	.026	.156	.082	.024															
7.0	.203	.100	.028	.193	.096	.027	.176	.089	.026	.159	.082	.024	.144	.075	.022															
8.0	.188	.092	.026	.179	.088	.025	.163	.081	.023	.148	.075	.022	.133	.068	.020															
9.0	.175	.085	.024	.167	.081	.023	.152	.075	.021	.138	.069	.020	.124	.063	.018															
10.0	.163	.078	.022	.156	.075	.021	.142	.070	.020	.129	.064	.018	.117	.059	.017															

pcc	80%			70%			50%			30%			10%			0
pw	50%	30%	10%	50%	30%	10%	50%	30%	10%	50%	30%	10%	50%	30%	10%	0
pfc	20%			20%			20%			20%			20%			0
RCR	RCR:Room Cavity Ratio						Ceiling Cavity Exitance Coefficients (CCEC)									
0.0	.413	.413	.413	.353	.353	.353	.241	.241	.241	.139	.139	.139	.044	.044	.044	
1.0	.411	.380	.353	.352	.326	.304	.240	.225	.210	.138	.130	.122	.044	.042	.039	
2.0	.404	.358	.319	.346	.308	.276	.237	.213	.192	.137	.124	.113	.044	.040	.037	
3.0	.397	.342	.298	.340	.295	.259	.234	.205	.181	.135	.120	.107	.043	.039	.035	
4.0	.389	.330	.284	.334	.285	.247	.230	.199	.174	.133	.116	.103	.043	.038	.034	
5.0	.382	.320	.275	.328	.277	.239	.226	.194	.169	.131	.114	.100	.042	.037	.033	
6.0	.374	.313	.268	.322	.271	.234	.222	.190	.165	.129	.111	.098	.042	.036	.032	
7.0	.367	.306	.263	.316	.265	.229	.218	.186	.163	.127	.110	.097	.041	.036	.032	
8.0	.361	.301	.260	.311	.261	.226	.215	.183	.161	.125	.108	.096	.040	.035	.032	
9.0	.355	.296	.257	.306	.257	.224	.212	.181	.159	.123	.107	.095	.040	.035	.031	
10.0	.349	.292	.254	.301	.254	.222	.209	.178	.158	.122	.105	.094	.039	.035	.031	

C Range: 0 - 360DEG  
C Interval: 22.5DEG  
Test Speed: HIGH  
Temperature:25.3℃  
Operators:Cloud  
Test Date:2024-10-08

γ Range: 0 - 180DEG  
γ Interval: 1.0DEG  
Test System:EVERFINE GO-2000B\_V1 SYSTEM V2.00.488  
Humidity:65.0%  
Test Distance:6.360m [K=1.0000]  
Remarks: BLUE

UGR(Unified Glare Rating) Table

Test:U:24.00V I:0.1605A P:3.852W PF:1.000 Freq:0Hz Lamp Flux:27.3783x1 lm											
NAME: SF21-24V-5050-60-RGBW(4000)					TYPE:			WEIGHT:			
SPEC.:					DIM.: Length=1m			SERIAL No.:			
MFR.:					SUR.:			Shielding Angle:			
ceiling/cavity	0.7	0.7	0.5	0.5	0.3	0.7	0.7	0.5	0.5	0.3	
walls	0.5	0.3	0.5	0.3	0.3	0.5	0.3	0.5	0.3	0.3	
working plane	0.2	0.2	0.2	0.2	0.2	0.2	0.2	0.2	0.2	0.2	
Room dimensions		Viewed crosswise					Viewed endwise				
x = 2H y = 2H	2H	21.4	22.6	22.0	23.3	24.1	18.7	20.0	19.4	20.7	21.4
	3H	24.4	25.6	25.1	26.2	27.1	20.6	21.7	21.2	22.4	23.2
	4H	26.1	27.2	26.8	27.9	28.7	21.4	22.5	22.1	23.2	24.1
	6H	27.9	29.0	28.6	29.7	30.5	22.2	23.3	23.0	24.0	24.9
	8H	29.0	30.0	29.7	30.7	31.6	22.6	23.6	23.3	24.3	25.2
	12H	30.1	31.1	30.9	31.8	32.7	22.9	23.9	23.7	24.6	25.5
4H	2H	21.9	23.0	22.6	23.7	24.6	20.1	21.2	20.8	21.9	22.7
	3H	25.2	26.1	25.9	26.9	27.8	22.1	23.1	22.8	23.8	24.7
	4H	27.1	28.0	27.8	28.7	29.6	23.1	24.0	23.9	24.8	25.7
	6H	29.2	29.9	29.9	30.7	31.7	24.1	24.9	24.9	25.6	26.6
	8H	30.3	31.0	31.1	31.8	32.8	24.5	25.3	25.3	26.1	27.0
	12H	31.6	32.3	32.4	33.1	34.1	24.9	25.6	25.7	26.4	27.4
8H	4H	27.4	28.2	28.2	28.9	29.9	24.4	25.1	25.2	25.9	26.9
	6H	29.8	30.4	30.6	31.3	32.3	25.7	26.3	26.5	27.1	28.1
	8H	31.2	31.8	32.0	32.6	33.6	26.3	26.9	27.2	27.7	28.7
	12H	32.8	33.3	33.6	34.1	35.2	26.9	27.4	27.8	28.3	29.3
12H	4H	27.4	28.1	28.2	28.9	29.9	24.8	25.5	25.6	26.3	27.3
	6H	29.9	30.5	30.8	31.3	32.4	26.4	26.9	27.2	27.8	28.8
	8H	31.4	31.9	32.3	32.8	33.8	27.2	27.7	28.0	28.5	29.6
Variations with the observer position at spacings(CIE Pub.117):											
S = 1.0H		+ 0.1 / - 0.1					+ 0.1 / - 0.1				
1.5H		+ 0.2 / - 0.3					+ 0.2 / - 0.2				
2.0H		+ 0.3 / - 0.4					+ 0.2 / - 0.4				

CIE Pub.117, 27.38 lm Total Lamp Luminous Flux Correct (8log(F/F0) = -12.5)  
Area: 0.015 m2

C Range: 0 - 360DEG  
C Interval: 22.5DEG  
Test Speed: HIGH  
Temperature:25.3℃  
Operators:Cloud  
Test Date:2024-10-08

γ Range: 0 - 180DEG  
γ Interval: 1.0DEG  
Test System:EVERFINE GO-2000B\_V1 SYSTEM V2.00.488  
Humidity:65.0%  
Test Distance:6.360m [K=1.0000]  
Remarks: BLUE

## UTILIZATION FACTORS TABLE

Test:U:24.00V I:0.1605A P:3.852W PF:1.000 Freq:0Hz Lamp Flux:27.3783x1 lm		
NAME: SF21-24V-5050-60-RGBW(4000)	TYPE:	WEIGHT:
SPEC.:	DIM.: Length=1m	SERIAL No.:
MFR.:	SUR.:	Shielding Angle:

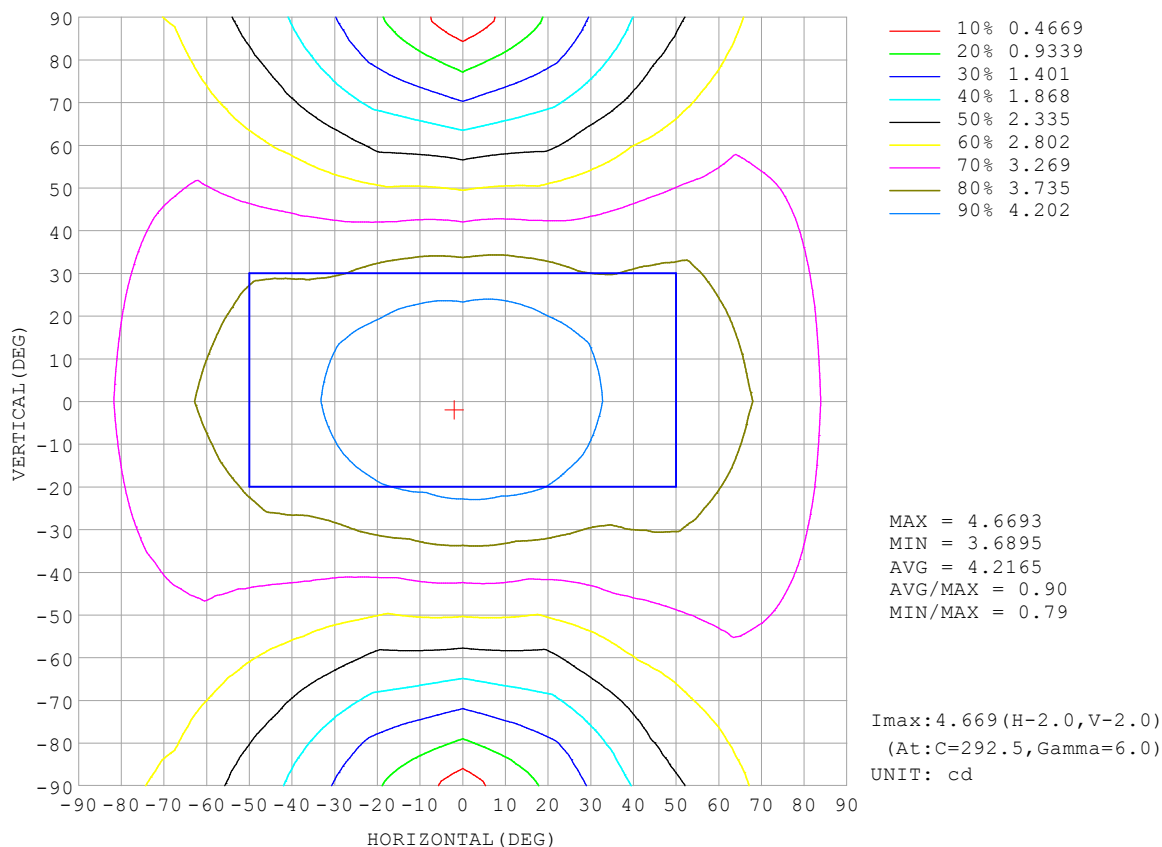
REFLECTANCE										
Ceiling	0.8	0.8	0.8	0.7	0.7	0.7	0.5	0.5	0.5	0
Walls	0.7	0.5	0.3	0.7	0.5	0.3	0.7	0.5	0.3	0
Working plane	0.2	0.2	0.2	0.2	0.2	0.2	0.2	0.2	0.2	0
ROOM INDEX	UTILIZATION FACTORS (PERCENT) $k(RI) \times RCR = 5$									
$k = 0.60$	44	31	24	42	31	24	40	29	23	16
0.80	53	40	31	51	38	31	47	37	30	21
1.00	60	47	38	58	45	37	53	45	36	26
1.25	67	54	45	64	52	44	59	49	42	31
1.50	72	60	51	69	57	49	63	53	46	34
2.00	80	68	59	76	65	57	69	60	53	39
2.50	84	74	65	80	70	63	72	64	58	43
3.00	88	78	70	84	75	68	75	68	62	46
4.00	93	85	78	88	81	74	79	73	68	50
5.00	96	89	82	91	85	79	82	76	72	53
ROOM INDEX	UF(total)									Direct
According to DIN EN 13032-2 2004			Suspended					SHRNOM = 1.25		

C Range: 0 - 360DEG  
 C Interval: 22.5DEG  
 Test Speed: HIGH  
 Temperature: 25.3°C  
 Operators: Cloud  
 Test Date: 2024-10-08

γ Range: 0 - 180DEG  
 γ Interval: 1.0DEG  
 Test System: EVERFINE GO-2000B\_V1 SYSTEM V2.00.488  
 Humidity: 65.0%  
 Test Distance: 6.360m [K=1.0000]  
 Remarks: BLUE

## ISOCANDELA DIAGRAM

Test:U:24.00V I:0.1605A P:3.852W PF:1.000 Freq:0Hz Lamp Flux:27.3783x1 lm		
NAME: SF21-24V-5050-60-RGBW(4000)	TYPE:	WEIGHT:
SPEC.:	DIM.: Length=1m	SERIAL No.:
MFR.:	SUR.:	Shielding Angle:



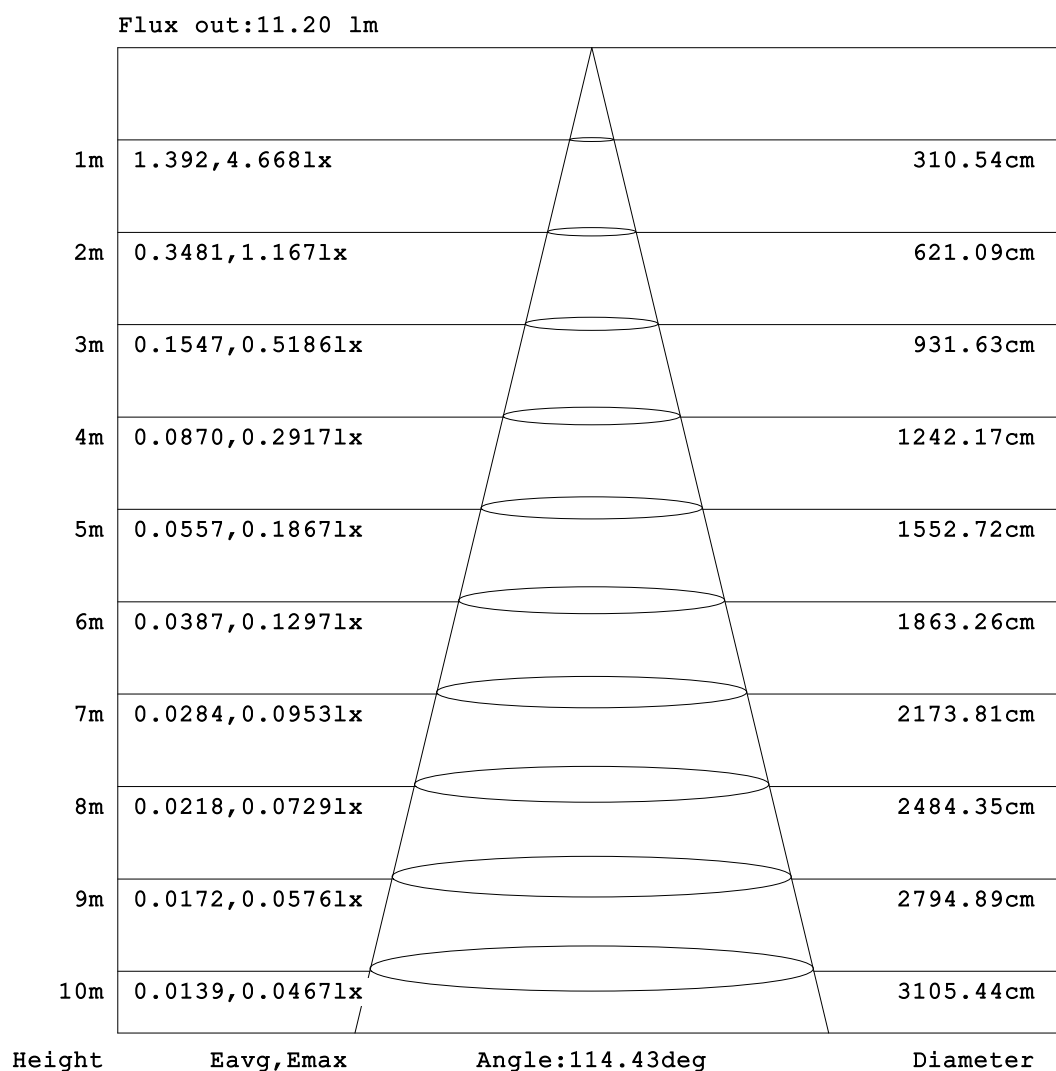
C Range: 0 - 360DEG  
C Interval: 22.5DEG  
Test Speed: HIGH  
Temperature: 25.3°C  
Operators: Cloud  
Test Date: 2024-10-08

γ Range: 0 - 180DEG  
γ Interval: 1.0DEG  
Test System: EVERFINE GO-2000B\_V1 SYSTEM V2.00.488  
Humidity: 65.0%  
Test Distance: 6.360m [K=1.0000]  
Remarks: BLUE



## AAI Figure

Test:U:24.00V I:0.1605A P:3.852W PF:1.000 Freq:0Hz Lamp Flux:27.3783x1 lm		
NAME: SF21-24V-5050-60-RGBW(4000)	TYPE:	WEIGHT:
SPEC.:	DIM.: Length=1m	SERIAL No.:
MFR.:	SUR.:	Shielding Angle:



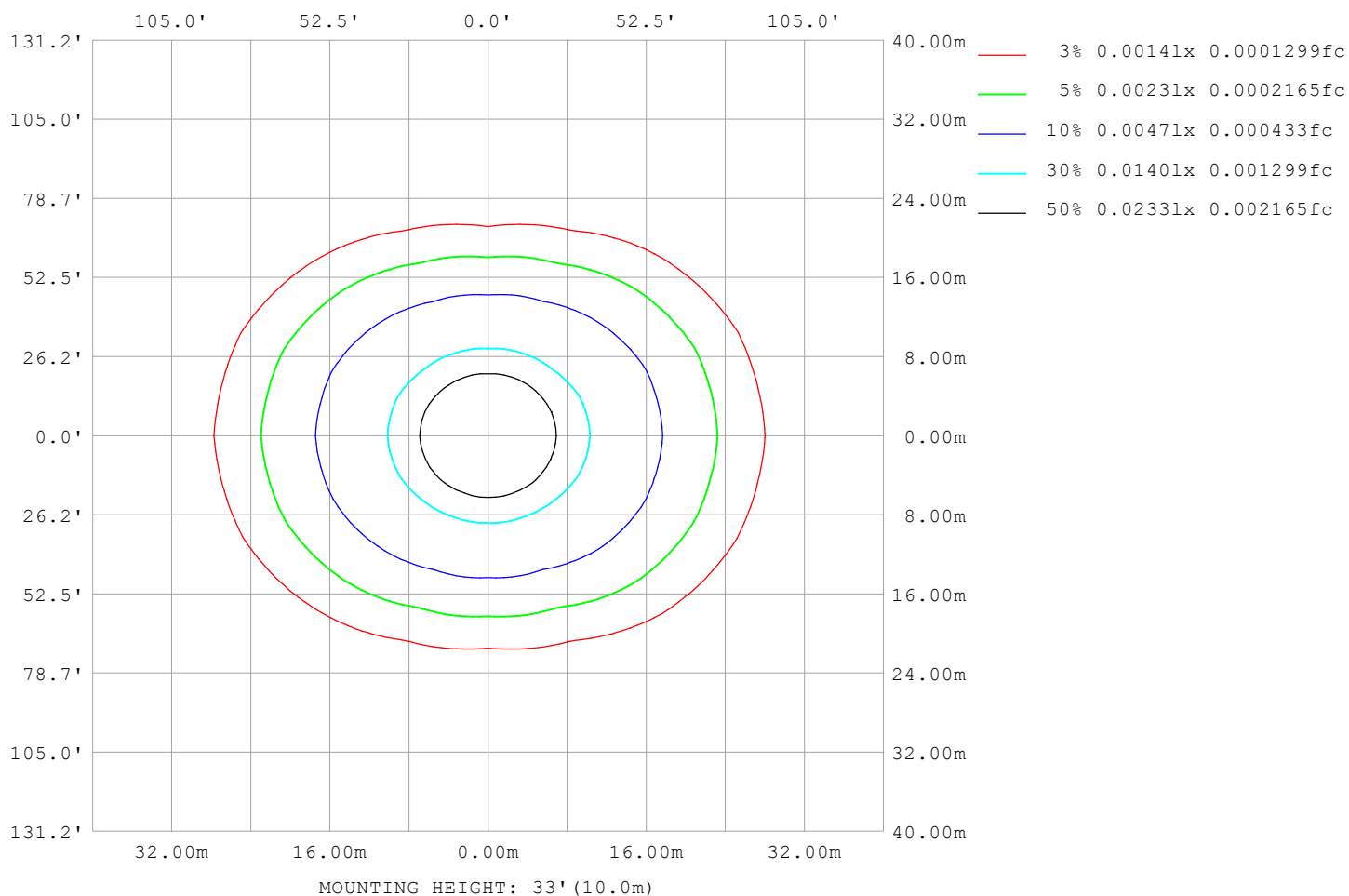
Note:The Curves indicate the illuminated area and the average illumination when the luminaire is at different distance.

C Range: 0 - 360DEG  
C Interval: 22.5DEG  
Test Speed: HIGH  
Temperature:25.3℃  
Operators:Cloud  
Test Date:2024-10-08

γ Range: 0 - 180DEG  
γ Interval: 1.0DEG  
Test System:EVERFINE GO-2000B\_V1 SYSTEM V2.00.488  
Humidity:65.0%  
Test Distance:6.360m [K=1.0000]  
Remarks: BLUE

## ISOLUX DIAGRAM

Test:U:24.00V I:0.1605A P:3.852W PF:1.000 Freq:0Hz Lamp Flux:27.3783x1 lm		
NAME: SF21-24V-5050-60-RGBW(4000)	TYPE:	WEIGHT:
SPEC.:	DIM.: Length=1m	SERIAL No.:
MFR.:	SUR.:	Shielding Angle:



C Range: 0 - 360DEG  
C Interval: 22.5DEG  
Test Speed: HIGH  
Temperature: 25.3°C  
Operators: Cloud  
Test Date: 2024-10-08

γ Range: 0 - 180DEG  
γ Interval: 1.0DEG  
Test System: EVERFINE GO-2000B\_V1 SYSTEM V2.00.488  
Humidity: 65.0%  
Test Distance: 6.360m [K=1.0000]  
Remarks: BLUE

## LED Avg.L Report

Test:U:24.00V I:0.1605A P:3.852W PF:1.000 Freq:0Hz Lamp Flux:27.3783x1 lm		
NAME: SF21-24V-5050-60-RGBW(4000)	TYPE:	WEIGHT:
SPEC.:	DIM.: Length=1m	SERIAL No.:
MFR.:	SUR.:	Shielding Angle:

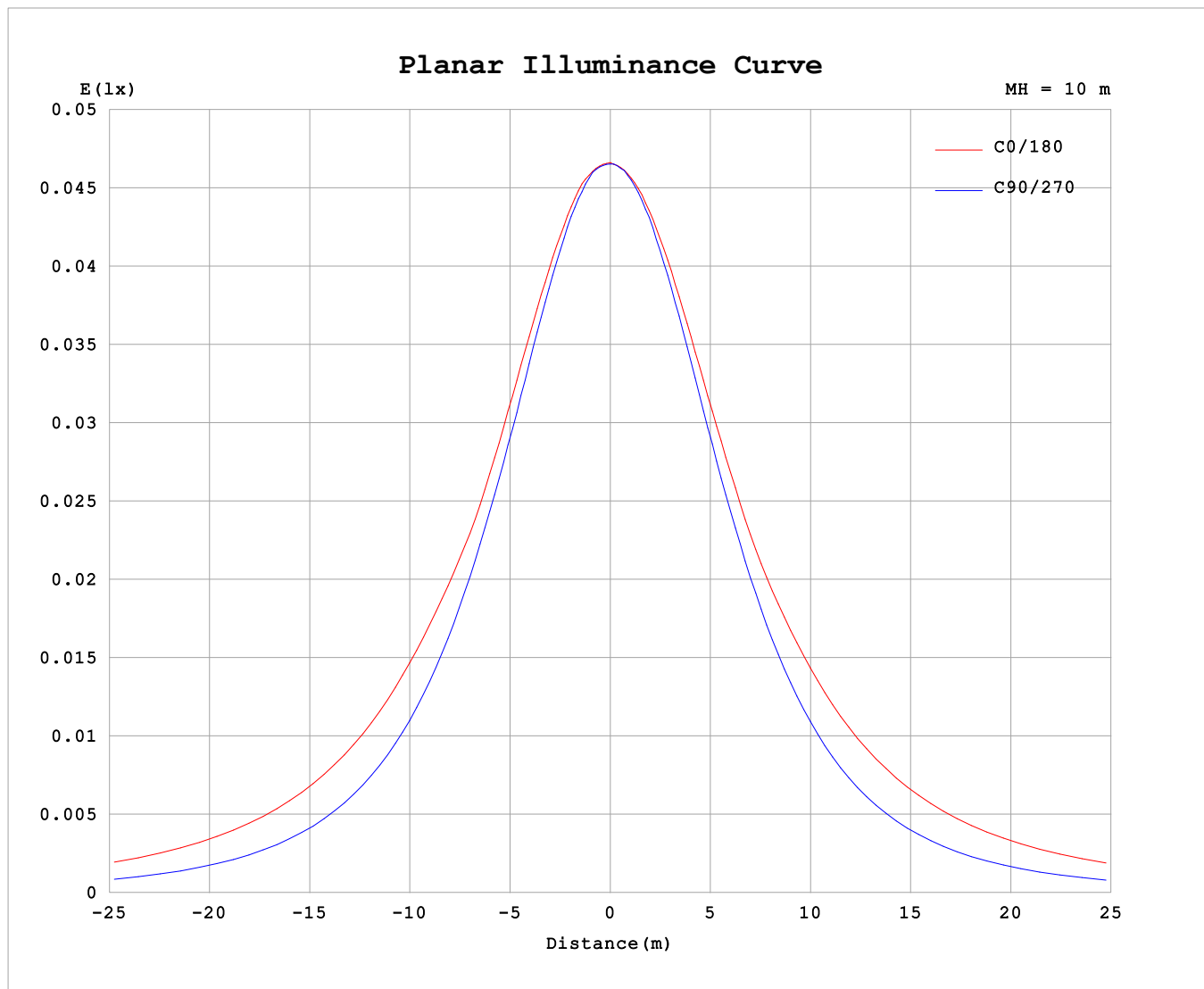
AvgL	cd/m2
L_0~180 (65) av	590
L_0~180 (75) av	899
L_0~180 (85) av	2448
L_90~270 (65) av	286
L_90~270 (75) av	293
L_90~270 (85) av	367
L_45 (65) av	451
L_45 (75) av	645
L_45 (85) av	1684

Standard: GB/T 29293-2012

C Range: 0 - 360DEG  
C Interval: 22.5DEG  
Test Speed: HIGH  
Temperature:25.3℃  
Operators:Cloud  
Test Date:2024-10-08

γ Range: 0 - 180DEG  
γ Interval: 1.0DEG  
Test System:EVERFINE GO-2000B\_V1 SYSTEM V2.00.488  
Humidity:65.0%  
Test Distance:6.360m [K=1.0000]  
Remarks: BLUE

## Planar Illuminance Curve



C Range: 0 - 360DEG  
C Interval: 22.5DEG  
Test Speed: HIGH  
Temperature: 25.3°C  
Operators: Cloud  
Test Date: 2024-10-08

$\gamma$  Range: 0 - 180DEG  
 $\gamma$  Interval: 1.0DEG  
Test System: EVERFINE GO-2000B\_V1 SYSTEM V2.00.488  
Humidity: 65.0%  
Test Distance: 6.360m [K=1.0000]  
Remarks: BLUE

## LUMINOUS DISTRIBUTION INTENSITY DATA

Test:U:24.00V I:0.1605A P:3.852W PF:1.000 Freq:0Hz Lamp Flux:27.3783x1 lm																	
NAME: SF21-24V-5050-60-RGBW(4000)									TYPE:						WEIGHT:		
SPEC.:									DIM.: Length=1m						SERIAL No.:		
MFR.:									SUR.:						Shielding Angle:		

Table--1

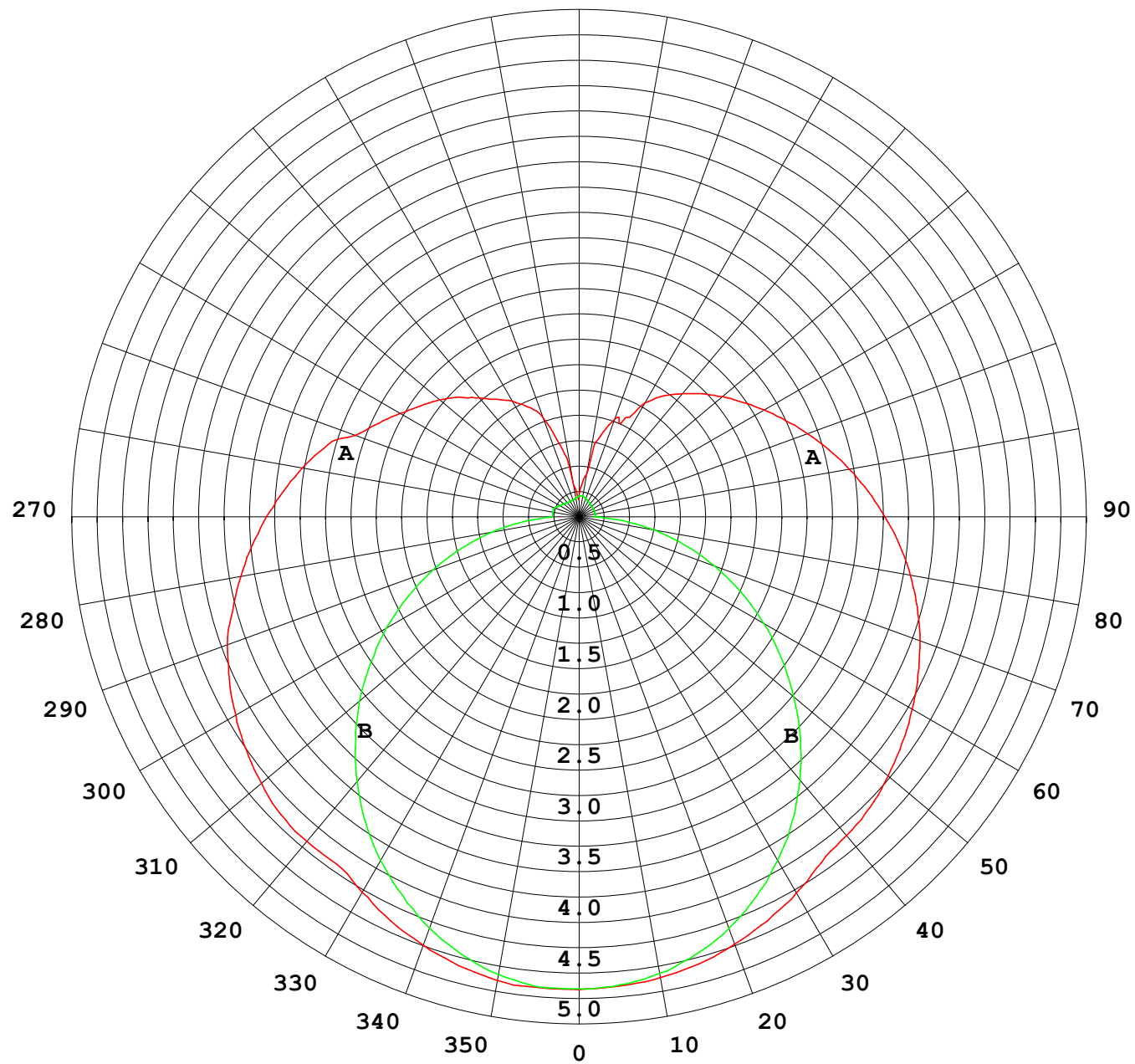
UNIT: cd

C (DEG) γ (DEG)		0	22.5	45	67.5	90	112.5	135	157.5	180	202.5	225	247.5	270	292.5	315	337.5			
0	4.66	4.66	4.66	4.66	4.66	4.66	4.66	4.66	4.66	4.66	4.66	4.66	4.66	4.66	4.66	4.66	4.66			
5	4.66	4.65	4.66	4.64	4.66	4.62	4.65	4.64	4.64	4.66	4.64	4.66	4.64	4.66	4.66	4.64	4.66			
10	4.64	4.61	4.63	4.58	4.59	4.56	4.59	4.59	4.61	4.63	4.59	4.61	4.58	4.62	4.60	4.65				
15	4.58	4.55	4.55	4.49	4.47	4.45	4.51	4.54	4.56	4.57	4.52	4.51	4.47	4.53	4.53	4.59				
20	4.49	4.46	4.44	4.35	4.32	4.31	4.39	4.45	4.48	4.48	4.41	4.37	4.32	4.40	4.42	4.50				
25	4.39	4.34	4.29	4.17	4.12	4.13	4.24	4.33	4.39	4.37	4.27	4.20	4.14	4.22	4.28	4.39				
30	4.27	4.21	4.12	3.96	3.92	3.93	4.08	4.20	4.28	4.25	4.10	4.00	3.92	4.02	4.12	4.26				
35	4.17	4.06	3.93	3.74	3.68	3.71	3.89	4.05	4.16	4.11	3.92	3.77	3.67	3.79	3.93	4.11				
40	4.17	4.00	3.73	3.49	3.41	3.46	3.68	3.94	4.10	4.00	3.71	3.51	3.39	3.53	3.72	4.04				
45	4.15	3.96	3.52	3.22	3.12	3.19	3.47	3.86	4.05	3.93	3.51	3.24	3.09	3.25	3.51	4.00				
50	4.09	3.87	3.40	2.93	2.83	2.92	3.31	3.77	3.98	3.83	3.36	2.95	2.77	2.96	3.39	3.92				
55	4.00	3.78	3.26	2.64	2.51	2.63	3.15	3.65	3.88	3.72	3.19	2.65	2.44	2.66	3.24	3.83				
60	3.91	3.66	3.08	2.34	2.20	2.34	2.96	3.52	3.79	3.60	3.02	2.36	2.10	2.37	3.08	3.72				
65	3.80	3.53	2.92	2.11	1.86	2.10	2.77	3.39	3.68	3.47	2.83	2.11	1.77	2.11	2.91	3.60				
70	3.69	3.41	2.74	1.88	1.53	1.86	2.59	3.27	3.57	3.35	2.65	1.87	1.42	1.88	2.72	3.45				
75	3.53	3.27	2.57	1.65	1.20	1.61	2.43	3.14	3.45	3.21	2.49	1.63	1.08	1.63	2.54	3.31				
80	3.38	3.12	2.41	1.43	0.87	1.39	2.27	3.00	3.31	3.08	2.32	1.41	0.75	1.40	2.38	3.16				
85	3.23	2.96	2.27	1.25	0.54	1.20	2.12	2.85	3.17	2.93	2.18	1.23	0.42	1.22	2.23	3.00				
90	3.08	2.81	2.11	1.11	0.27	1.06	1.99	2.71	3.01	2.77	2.04	1.10	0.15	1.09	2.09	2.85				
95	2.92	2.67	2.00	1.03	0.26	0.98	1.87	2.56	2.86	2.63	1.91	1.02	0.16	1.00	1.98	2.71				
100	2.77	2.53	1.89	0.83	0.26	0.94	1.77	2.42	2.70	2.49	1.82	0.97	0.16	0.81	1.87	2.57				
105	2.61	2.35	1.64	0.75	0.26	0.92	1.68	2.28	2.55	2.34	1.71	0.95	0.16	0.62	1.65	2.40				
110	2.35	2.10	1.50	0.78	0.26	0.92	1.61	2.15	2.39	2.21	1.63	0.95	0.16	0.70	1.30	2.17				
115	2.18	1.95	1.41	0.77	0.24	0.91	1.53	2.02	2.24	2.08	1.56	0.95	0.16	0.75	1.25	1.94				
120	2.04	1.83	1.35	0.74	0.22	0.89	1.48	1.91	2.11	1.95	1.50	0.95	0.16	0.79	1.30	1.53				
125	1.91	1.73	1.26	0.71	0.21	0.86	1.42	1.80	1.97	1.84	1.43	0.91	0.16	0.79	1.18	1.56				
130	1.79	1.63	1.11	0.68	0.20	0.84	1.35	1.69	1.84	1.73	1.37	0.89	0.16	0.75	1.07	1.55				
135	1.67	1.54	0.99	0.64	0.19	0.82	1.29	1.58	1.72	1.62	1.29	0.88	0.16	0.70	1.01	1.42				
140	1.53	1.40	0.89	0.56	0.18	0.77	1.19	1.47	1.59	1.50	1.20	0.82	0.17	0.63	0.93	1.31				
145	1.41	1.13	0.81	0.49	0.18	0.72	1.11	1.34	1.46	1.38	1.11	0.76	0.18	0.56	0.84	1.17				
150	1.31	0.89	0.73	0.43	0.18	0.66	1.04	1.20	1.29	1.23	1.04	0.72	0.18	0.47	0.74	1.03				
155	1.19	0.77	0.61	0.40	0.18	0.56	0.93	1.09	1.08	1.13	0.93	0.62	0.19	0.42	0.63	0.87				
160	1.04	0.61	0.50	0.38	0.18	0.48	0.82	0.97	1.02	1.00	0.81	0.53	0.19	0.40	0.51	0.69				
165	0.73	0.44	0.48	0.34	0.18	0.39	0.70	0.80	0.83	0.84	0.69	0.45	0.20	0.37	0.45	0.51				
170	0.32	0.33	0.40	0.31	0.19	0.32	0.53	0.64	0.42	0.67	0.53	0.37	0.21	0.34	0.39	0.39				
175	0.22	0.27	0.32	0.27	0.20	0.26	0.37	0.41	0.32	0.45	0.36	0.29	0.21	0.29	0.30	0.31				
180	0.21	0.21	0.21	0.21	0.20	0.21	0.21	0.21	0.23	0.22	0.21	0.21	0.21	0.22	0.21	0.21				

C Range: 0 - 360DEG  
C Interval: 22.5DEG  
Test Speed: HIGH  
Temperature:25.3℃  
Operators:Cloud  
Test Date:2024-10-08

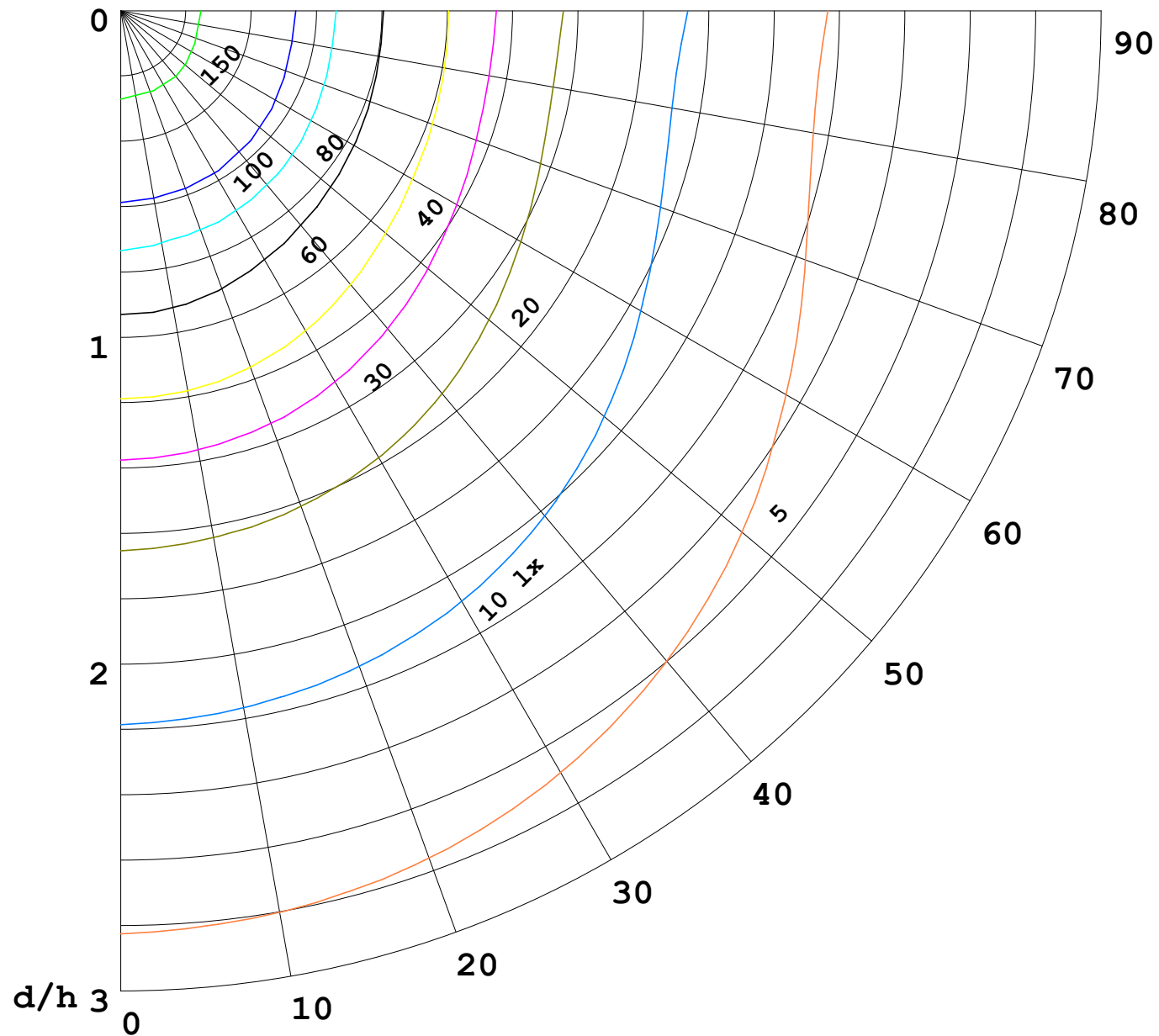
γ Range: 0 - 180DEG  
γ Interval: 1.0DEG  
Test System:EVERFINE GO-2000B\_V1 SYSTEM V2.00.488  
Humidity:65.0%  
Test Distance:6.360m [K=1.0000]  
Remarks: BLUE

I (cd)



1000 lm

$\kappa = 1$



F = 1000 lm  
 K = 0.7  
 Hcc = 0.8 m  
 Hfc = 0.0 m  
 Eave = 100 lx

	Pcc	Pw	Pfc
—————	70	50	30
—————	50	30	20

