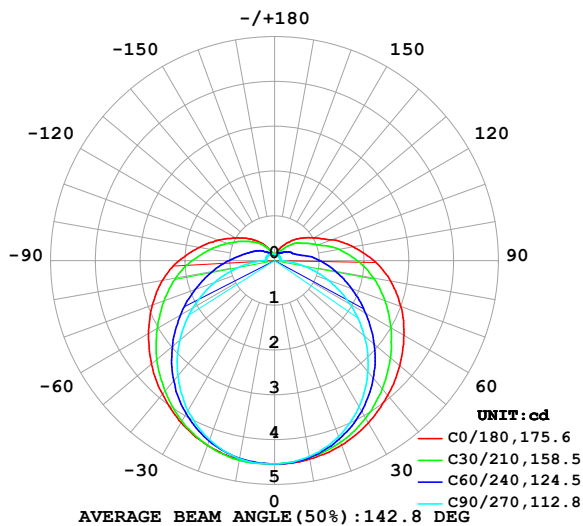


## LUMINAIRE PHOTOMETRIC TEST REPORT

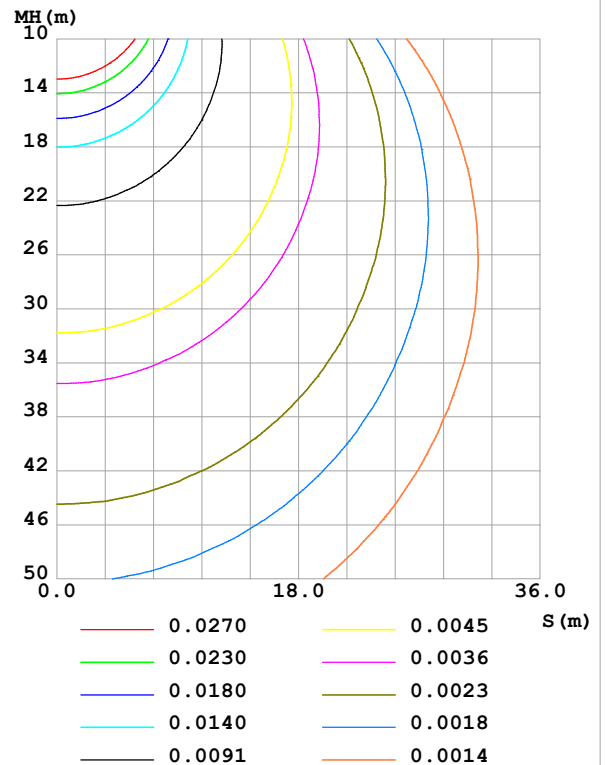
Test:U:24.00V I:0.1664A P:3.994W PF:1.000 Freq:0Hz Lamp Flux:21.6346x1 lm		
NAME: SF21-24V-5050-60-RGBW(5000K)-B	TYPE:	WEIGHT:
SPEC.:	DIM.: Length=1m	SERIAL No.:
MFR.: Olym pia lighting	SUR.:	Shielding Angle:

DATA OF LAMP		PHOTOMETRIC DATA				Eff: 5.42 lm/W
MODEL	5050	Imax (cd)	4.545	S/MH(C0/180)	1.38	
NOMINAL POWER(W)		LOR(%)	100.0	S/MH(C90/270)	1.27	
RATED VOLTAGE(V)	24	TOTAL FLUX(lm)	21.635	$\eta$ UP,DN(C0-180)	9.4,40.1	
NOMINAL FLUX(lm)	21.6346	CIE CLASS	SEMI-D.	$\eta$ UP,DN(C180-360)	9.8,40.8	
LAMPS INSIDE	1	$\eta$ up (%)	19.1	CIBSE SHR NOM	1.50	
TEST VOLTAGE(V)		$\eta$ down (%)	80.9	CIBSE SHR MAX	1.55	

LUMINOUS INTENSITY DISTRIBUTION DIAGRAM



C0 PLANE ISOLUX DIAGRAM (UNIT:lx)



C Range: 0 - 360DEG  
C Interval: 30.0DEG  
Test Speed: HIGH  
Temperature:25.3℃  
Operators:  
Test Date:2025-03-10

$\gamma$  Range: 0 - 180DEG  
 $\gamma$  Interval: 1.0DEG  
Test System:EVERFINE GO-2000B\_V1 SYSTEM V2.00.488  
Humidity:65.0%  
Test Distance:6.360m [K=1.0000]  
Remarks:

## ZONAL FLUX DIAGRAM

## ZONAL FLUX DIAGRAM:

$\gamma$	C0	C45	C90	C135	C180	C225	C270	C315	$\gamma$	$\Phi$ zone	$\Phi$ total	%lum, lamp
10	4.502	4.471	4.444	4.494	4.513	4.507	4.493	4.486	0- 10	0.4312	0.4312	1.99,1.99
20	4.384	4.277	4.181	4.311	4.392	4.337	4.256	4.312	10- 20	1.247	1.678	7.76,7.76
30	4.188	3.976	3.776	4.004	4.179	4.043	3.872	4.025	20- 30	1.924	3.602	16.7,16.7
40	3.928	3.587	3.241	3.607	3.896	3.654	3.364	3.657	30- 40	2.395	5.998	27.7,27.7
50	3.652	3.140	2.617	3.153	3.596	3.206	2.763	3.224	40- 50	2.629	8.626	39.9,39.9
60	3.335	2.672	1.947	2.675	3.250	2.727	2.104	2.766	50- 60	2.628	11.25	52,52
70	3.000	2.225	1.265	2.210	2.907	2.256	1.419	2.324	60- 70	2.436	13.69	63.3,63.3
80	2.626	1.815	0.6264	1.792	2.541	1.826	0.7748	1.913	70- 80	2.107	15.80	73,73
90	2.217	1.430	0.1185	1.408	2.135	1.436	0.2141	1.520	80- 90	1.700	17.50	80.9,80.9
100	1.784	1.063	0.1185	1.083	1.711	1.099	0.2051	1.153	90-100	1.312	18.81	86.9,86.9
110	1.358	0.7502	0.1271	0.8301	1.337	0.8456	0.2051	0.8403	100-110	0.9729	19.78	91.4,91.4
120	1.026	0.5843	0.1329	0.6439	1.011	0.6551	0.1994	0.6426	110-120	0.6985	20.48	94.7,94.7
130	0.7784	0.4530	0.1358	0.4865	0.7634	0.5006	0.1907	0.4909	120-130	0.4911	20.97	96.9,96.9
140	0.5853	0.3187	0.1416	0.3451	0.5559	0.3665	0.1791	0.3321	130-140	0.3214	21.29	98.4,98.4
150	0.3921	0.2222	0.1445	0.2382	0.3543	0.2510	0.1647	0.2267	140-150	0.1860	21.48	99.3,99.3
160	0.2566	0.1644	0.1474	0.1674	0.2103	0.1746	0.1589	0.1675	150-160	0.0963	21.57	99.7,99.7
170	0.1499	0.1486	0.1474	0.1473	0.1470	0.1487	0.1502	0.1501	160-170	0.0456	21.62	99.9,99.9
180	0.1470	0.1472	0.1474	0.1473	0.1470	0.1472	0.1474	0.1473	170-180	0.0141	21.63	100,100
DEG	LUMINOUS INTENSITY:cd									UNIT:lm		

Conical surface Flux(90deg): 7.2977 lm

%lum = 33.7%

%lamp = 33.7%

Conical surface Flux(130deg): 12.506 lm

%lum = 57.8%

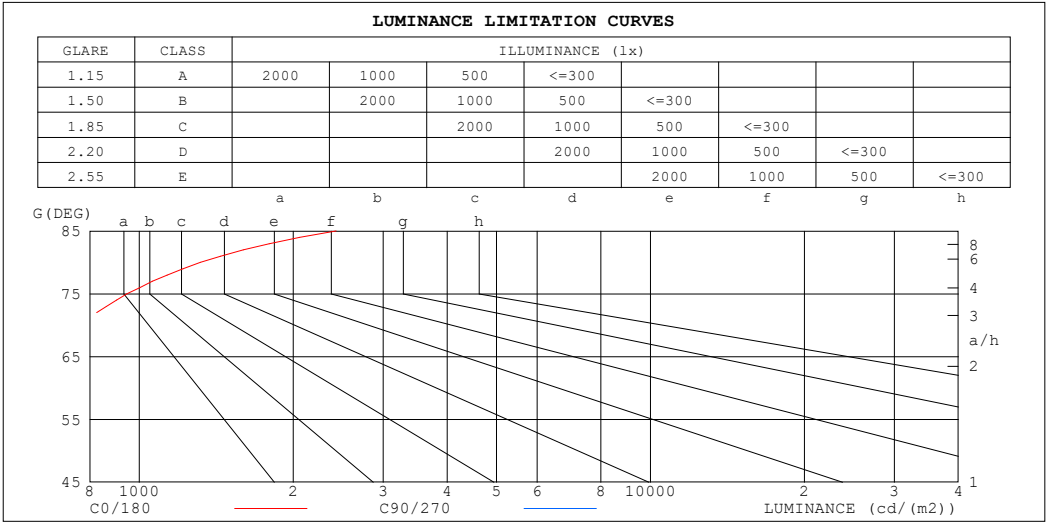
%lamp = 57.8%

C Range: 0 - 360DEG  
 C Interval: 30.0DEG  
 Test Speed: HIGH  
 Temperature:25.3℃  
 Operators:  
 Test Date:2025-03-10

$\gamma$  Range: 0 - 180DEG  
 $\gamma$  Interval: 1.0DEG  
 Test System:EVERFINE GO-2000B\_V1 SYSTEM V2.00.488  
 Humidity:65.0%  
 Test Distance:6.360m [K=1.0000]  
 Remarks:

LUMINANCE LIMITATION CURVES

Test:U:24.00V I:0.1664A P:3.994W PF:1.000 Freq:0Hz Lamp Flux:21.6346x1 lm		
NAME: SF21-24V-5050-60-RGBW(5000K) -B	TYPE:	WEIGHT:
SPEC.:	DIM.: Length=1m	SERIAL No.:
MFR.: OLympia lighting	SUR.:	Shielding Angle:



LUMINANCE cd/(m2)		
G (DEG)	C0/180	C90/270
85	2428	322
80	1317	313
75	947	314
70	764	321
65	654	331
60	581	338
55	530	346
50	495	354
45	467	362

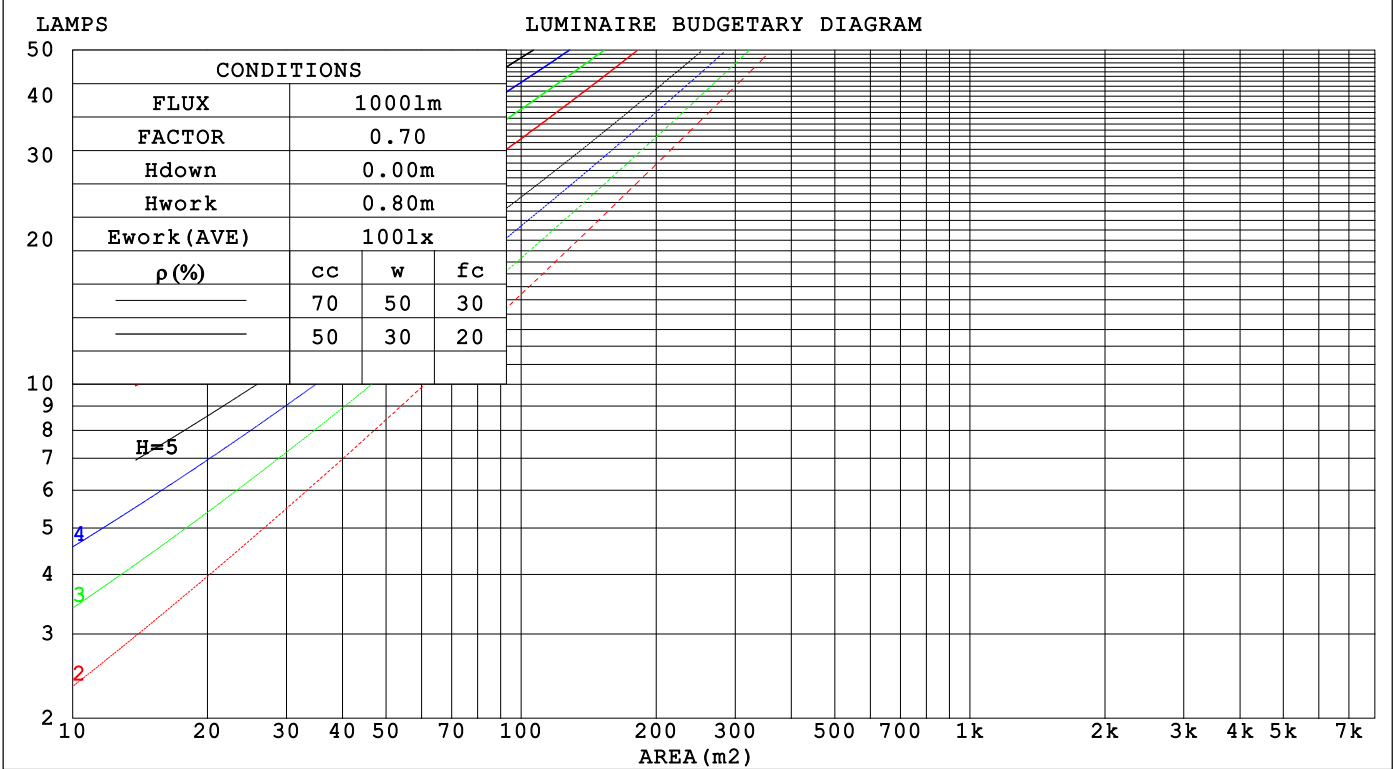
C Range: 0 - 360DEG  
C Interval: 30.0DEG  
Test Speed: HIGH  
Temperature:25.3℃  
Operators:  
Test Date:2025-03-10

γ Range: 0 - 180DEG  
γ Interval: 1.0DEG  
Test System:EVERFINE GO-2000B\_V1 SYSTEM V2.00.488  
Humidity:65.0%  
Test Distance:6.360m [K=1.0000]  
Remarks:

CU AND LUMINAIRE BUDGETARY ESTIMATE DIAGRAM

Test:U:24.00V I:0.1664A P:3.994W PF:1.000 Freq:0Hz		
Lamp Flux:21.6346x1 lm		
NAME: SF21-24V-5050-60-RGBW(5000K)-B	TYPE:	WEIGHT:
SPEC.:	DIM.: Length=1m	SERIAL No.:
MFR.: OLYMPIA lighting	SUR.:	Shielding Angle:

pcc	80%			70%			50%			30%			10%			0
pw	50%	30%	10%	50%	30%	10%	50%	30%	10%	50%	30%	10%	50%	30%	10%	0
pfc	20%			20%			20%			20%			20%			0
RCR	RCR:Room Cavity Ratio			Coefficients of Utilization(CU)												
0.0	1.14	1.14	1.14	1.10	1.10	1.10	1.00	1.00	1.00	.92	.92	.92	.84	.84	.84	.81
1.0	.95	.90	.85	.91	.86	.82	.83	.79	.75	.76	.73	.70	.69	.67	.64	.61
2.0	.81	.73	.67	.78	.70	.64	.71	.65	.60	.65	.60	.56	.59	.55	.52	.48
3.0	.70	.61	.54	.67	.59	.52	.61	.55	.49	.56	.50	.46	.51	.47	.43	.39
4.0	.62	.52	.45	.59	.50	.44	.54	.47	.41	.49	.43	.38	.45	.40	.36	.33
5.0	.55	.45	.38	.52	.44	.37	.48	.41	.35	.44	.38	.33	.40	.35	.31	.28
6.0	.49	.40	.33	.47	.38	.32	.43	.36	.30	.40	.33	.28	.36	.31	.27	.24
7.0	.44	.35	.29	.42	.34	.28	.39	.32	.26	.36	.30	.25	.33	.28	.24	.21
8.0	.40	.31	.25	.39	.30	.25	.36	.29	.23	.33	.27	.22	.30	.25	.21	.19
9.0	.37	.28	.23	.35	.27	.22	.33	.26	.21	.30	.24	.20	.28	.23	.19	.17
10.0	.34	.26	.20	.33	.25	.20	.30	.24	.19	.28	.22	.18	.26	.21	.17	.15



C Range: 0 - 360DEG  
C Interval: 30.0DEG  
Test Speed: HIGH  
Temperature:25.3℃  
Operators:  
Test Date:2025-03-10

γ Range: 0 - 180DEG  
γ Interval: 1.0DEG  
Test System:EVERFINE GO-2000B\_V1 SYSTEM V2.00.488  
Humidity:65.0%  
Test Distance:6.360m [K=1.0000]  
Remarks:

## WEC AND CCEC

Test:U:24.00V I:0.1664A P:3.994W PF:1.000 Freq:0Hz Lamp Flux:21.6346x1 lm		
NAME: SF21-24V-5050-60-RGBW(5000K)-B	TYPE:	WEIGHT:
SPEC.:	DIM.: Length=1m	SERIAL No.:
MFR.: OLympia lighting	SUR.:	Shielding Angle:

pcc	80%			70%			50%			30%			10%			0														
pw	50%	30%	10%	50%	30%	10%	50%	30%	10%	50%	30%	10%	50%	30%	10%	0														
pfc	20%			20%			20%			20%			20%			0														
RCR	RCR:Room Cavity Ratio															Wall Exitance Coefficients(WEC)														
0.0																														
1.0	.390	.222	.070	.377	.215	.068	.353	.202	.065	.330	.191	.061	.310	.179	.058															
2.0	.336	.184	.057	.324	.179	.055	.302	.168	.052	.282	.158	.049	.263	.149	.047															
3.0	.298	.159	.047	.287	.154	.046	.267	.145	.044	.249	.136	.042	.231	.128	.040															
4.0	.268	.139	.041	.258	.135	.040	.240	.127	.038	.223	.120	.036	.207	.113	.034															
5.0	.243	.124	.036	.234	.120	.035	.218	.113	.033	.202	.107	.032	.188	.100	.030															
6.0	.222	.112	.032	.215	.108	.031	.199	.102	.030	.185	.096	.028	.172	.091	.027															
7.0	.205	.101	.029	.198	.099	.028	.184	.093	.027	.171	.088	.026	.159	.083	.024															
8.0	.190	.093	.026	.183	.090	.026	.171	.085	.024	.159	.080	.023	.148	.076	.022															
9.0	.177	.086	.024	.171	.083	.023	.159	.079	.022	.148	.074	.021	.138	.070	.020															
10.0	.166	.079	.022	.160	.077	.022	.149	.073	.021	.139	.069	.020	.129	.065	.019															

pcc	80%			70%			50%			30%			10%			0
pw	50%	30%	10%	50%	30%	10%	50%	30%	10%	50%	30%	10%	50%	30%	10%	0
pfc	20%			20%			20%			20%			20%			0
RCR	RCR:Room Cavity Ratio						Ceiling Cavity Exitance Coefficients (CCEC)									
0.0	.336	.336	.336	.287	.287	.287	.196	.196	.196	.113	.113	.113	.036	.036	.036	
1.0	.333	.302	.275	.285	.259	.237	.195	.179	.164	.112	.103	.095	.036	.033	.031	
2.0	.326	.280	.241	.279	.241	.208	.191	.167	.145	.110	.097	.085	.035	.031	.028	
3.0	.319	.263	.219	.273	.227	.190	.187	.158	.133	.108	.092	.079	.035	.030	.026	
4.0	.311	.251	.205	.267	.217	.178	.183	.151	.125	.106	.088	.074	.034	.029	.024	
5.0	.303	.241	.195	.260	.208	.170	.179	.146	.120	.104	.086	.071	.033	.028	.023	
6.0	.296	.233	.188	.254	.202	.164	.175	.141	.116	.102	.083	.069	.033	.027	.023	
7.0	.288	.226	.183	.248	.196	.160	.171	.138	.113	.100	.081	.067	.032	.027	.022	
8.0	.282	.221	.179	.243	.192	.156	.168	.135	.111	.098	.079	.066	.032	.026	.022	
9.0	.275	.216	.176	.237	.188	.154	.164	.132	.109	.096	.078	.065	.031	.026	.022	
10.0	.270	.212	.174	.232	.184	.152	.161	.130	.108	.094	.077	.064	.030	.025	.021	

C Range: 0 - 360DEG  
C Interval: 30.0DEG  
Test Speed: HIGH  
Temperature:25.3℃  
Operators:  
Test Date:2025-03-10

γ Range: 0 - 180DEG  
γ Interval: 1.0DEG  
Test System:EVERFINE GO-2000B\_V1 SYSTEM V2.00.488  
Humidity:65.0%  
Test Distance:6.360m [K=1.0000]  
Remarks:

UGR(Unified Glare Rating) Table

Test:U:24.00V I:0.1664A P:3.994W PF:1.000 Freq:0Hz Lamp Flux:21.6346x1 lm											
NAME: SF21-24V-5050-60-RGBW(5000K)-B					TYPE:			WEIGHT:			
SPEC.:					DIM.: Length=1m			SERIAL No.:			
MFR.: OLympia lighting					SUR.:			Shielding Angle:			
ceiling/cavity	0.7	0.7	0.5	0.5	0.3	0.7	0.7	0.5	0.5	0.3	
walls	0.5	0.3	0.5	0.3	0.3	0.5	0.3	0.5	0.3	0.3	
working plane	0.2	0.2	0.2	0.2	0.2	0.2	0.2	0.2	0.2	0.2	
Room dimensions		Viewed crosswise					Viewed endwise				
x = 2H y = 2H	2H	23.6	25.0	24.1	25.5	26.1	21.5	22.8	22.0	23.4	24.0
	3H	26.4	27.6	26.9	28.2	28.8	23.1	24.4	23.7	25.0	25.6
	4H	27.9	29.1	28.5	29.7	30.3	23.9	25.1	24.4	25.6	26.3
	6H	29.6	30.8	30.2	31.4	32.0	24.5	25.6	25.1	26.2	26.9
	8H	30.6	31.7	31.2	32.3	33.0	24.7	25.8	25.3	26.4	27.1
	12H	31.7	32.7	32.3	33.4	34.1	24.9	26.0	25.5	26.6	27.3
4H	2H	24.1	25.3	24.7	25.9	26.6	22.6	23.8	23.2	24.4	25.0
	3H	27.2	28.2	27.8	28.8	29.5	24.5	25.6	25.1	26.2	26.9
	4H	28.9	29.9	29.6	30.5	31.3	25.5	26.4	26.1	27.1	27.8
	6H	30.8	31.7	31.5	32.4	33.1	26.3	27.2	26.9	27.8	28.6
	8H	31.9	32.7	32.6	33.4	34.2	26.6	27.4	27.3	28.1	28.9
	12H	33.2	33.9	33.8	34.6	35.4	26.9	27.7	27.6	28.4	29.2
8H	4H	29.3	30.1	29.9	30.7	31.5	26.5	27.3	27.2	28.0	28.8
	6H	31.5	32.2	32.2	32.9	33.7	27.7	28.4	28.4	29.1	29.9
	8H	32.8	33.4	33.5	34.1	35.0	28.3	28.9	29.0	29.6	30.5
	12H	34.3	34.8	35.0	35.6	36.4	28.8	29.3	29.5	30.1	30.9
12H	4H	29.3	30.0	30.0	30.7	31.5	26.9	27.6	27.6	28.3	29.1
	6H	31.6	32.2	32.3	33.0	33.8	28.3	28.9	29.0	29.6	30.5
	8H	33.0	33.6	33.8	34.3	35.2	29.0	29.6	29.8	30.3	31.2
Variations with the observer position at spacings(CIE Pub.117):											
S = 1.0H		+ 0.1 / - 0.1					+ 0.1 / - 0.1				
1.5H		+ 0.2 / - 0.2					+ 0.2 / - 0.3				
2.0H		+ 0.2 / - 0.3					+ 0.2 / - 0.4				

CIE Pub.117, 21.63 lm Total Lamp Luminous Flux Correct (8log(F/F0) = -13.3)  
Area: 0.0115 m2

C Range: 0 - 360DEG  
C Interval: 30.0DEG  
Test Speed: HIGH  
Temperature:25.3℃  
Operators:  
Test Date:2025-03-10

γ Range: 0 - 180DEG  
γ Interval: 1.0DEG  
Test System:EVERFINE GO-2000B\_V1 SYSTEM V2.00.488  
Humidity:65.0%  
Test Distance:6.360m [K=1.0000]  
Remarks:

## UTILIZATION FACTORS TABLE

Test:U:24.00V I:0.1664A P:3.994W PF:1.000 Freq:0Hz Lamp Flux:21.6346x1 lm		
NAME: SF21-24V-5050-60-RGBW(5000K) -B	TYPE:	WEIGHT:
SPEC.:	DIM.: Length=1m	SERIAL No.:
MFR.: OLympia lighting	SUR.:	Shielding Angle:

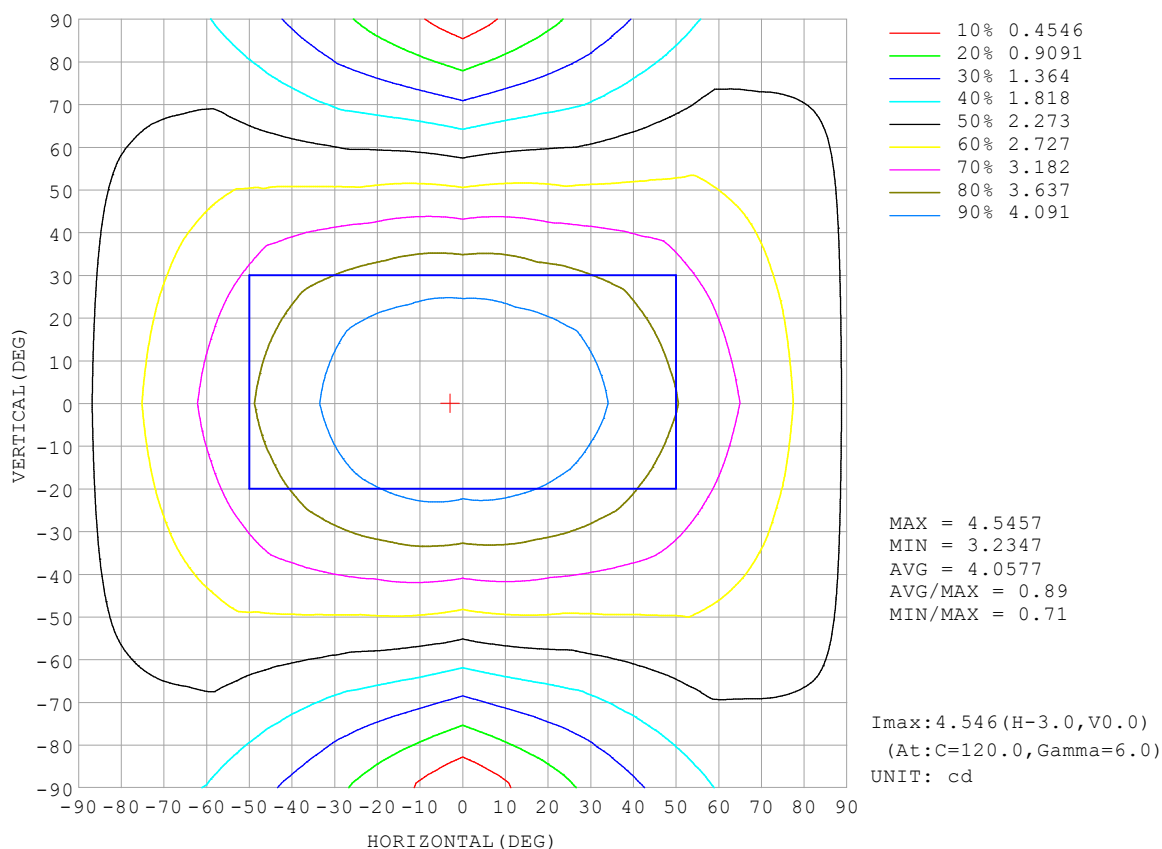
REFLECTANCE										
Ceiling	0.8	0.8	0.8	0.7	0.7	0.7	0.5	0.5	0.5	0
Walls	0.7	0.5	0.3	0.7	0.5	0.3	0.7	0.5	0.3	0
Working plane	0.2	0.2	0.2	0.2	0.2	0.2	0.2	0.2	0.2	0
ROOM INDEX	UTILIZATION FACTORS (PERCENT) $k(RI) \times RCR = 5$									
$k = 0.60$	47	35	27	46	34	27	44	33	27	20
0.80	56	43	35	55	42	35	52	41	34	26
1.00	64	51	42	62	50	42	58	50	41	32
1.25	71	58	49	68	57	49	64	54	47	37
1.50	76	64	55	73	62	54	68	59	52	41
2.00	83	72	64	80	70	62	74	66	59	47
2.50	88	77	69	84	75	68	78	70	64	51
3.00	92	82	74	88	79	72	81	74	68	55
4.00	96	88	81	92	85	79	85	79	74	59
5.00	99	92	86	95	89	83	87	82	78	62
ROOM INDEX	UF (total)									Direct
According to DIN EN 13032-2 2004			Suspended					SHRNOM = 1.25		

C Range: 0 - 360DEG  
 C Interval: 30.0DEG  
 Test Speed: HIGH  
 Temperature: 25.3°C  
 Operators:  
 Test Date: 2025-03-10

γ Range: 0 - 180DEG  
 γ Interval: 1.0DEG  
 Test System: EVERFINE GO-2000B\_V1 SYSTEM V2.00.488  
 Humidity: 65.0%  
 Test Distance: 6.360m [K=1.0000]  
 Remarks:

## ISOCANDELA DIAGRAM

Test:U:24.00V I:0.1664A P:3.994W PF:1.000 Freq:0Hz Lamp Flux:21.6346x1 lm		
NAME: SF21-24V-5050-60-RGBW(5000K)-B	TYPE:	WEIGHT:
SPEC.:	DIM.: Length=1m	SERIAL No.:
MFR.: OLympia lighting	SUR.:	Shielding Angle:



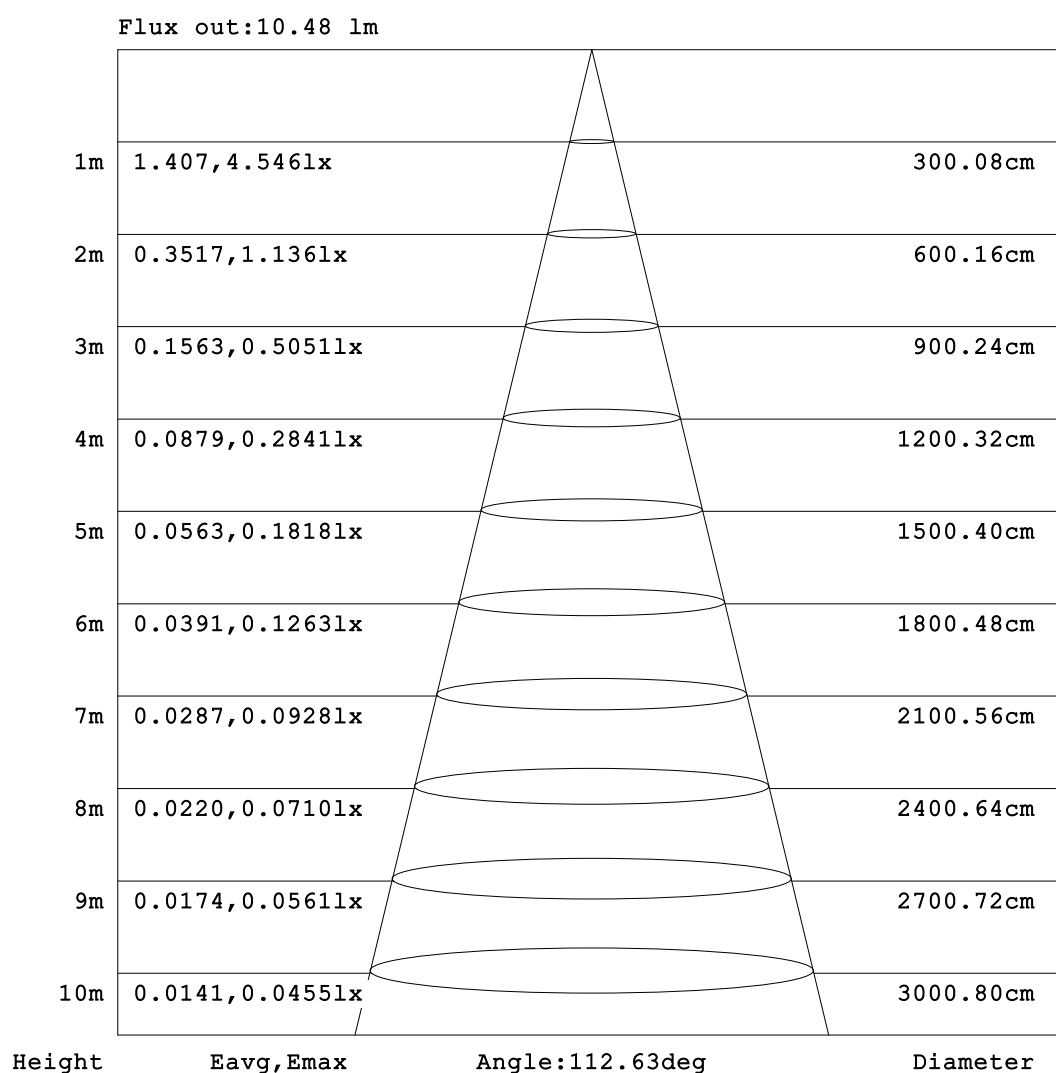
C Range: 0 - 360DEG  
C Interval: 30.0DEG  
Test Speed: HIGH  
Temperature: 25.3°C  
Operators:  
Test Date: 2025-03-10

γ Range: 0 - 180DEG  
γ Interval: 1.0DEG  
Test System: EVERFINE GO-2000B\_V1 SYSTEM V2.00.488  
Humidity: 65.0%  
Test Distance: 6.360m [K=1.0000]  
Remarks:



## AAI Figure

Test:U:24.00V I:0.1664A P:3.994W PF:1.000 Freq:0Hz Lamp Flux:21.6346x1 lm		
NAME: SF21-24V-5050-60-RGBW(5000K)-B	TYPE:	WEIGHT:
SPEC.:	DIM.: Length=1m	SERIAL No.:
MFR.: OLympia lighting	SUR.:	Shielding Angle:



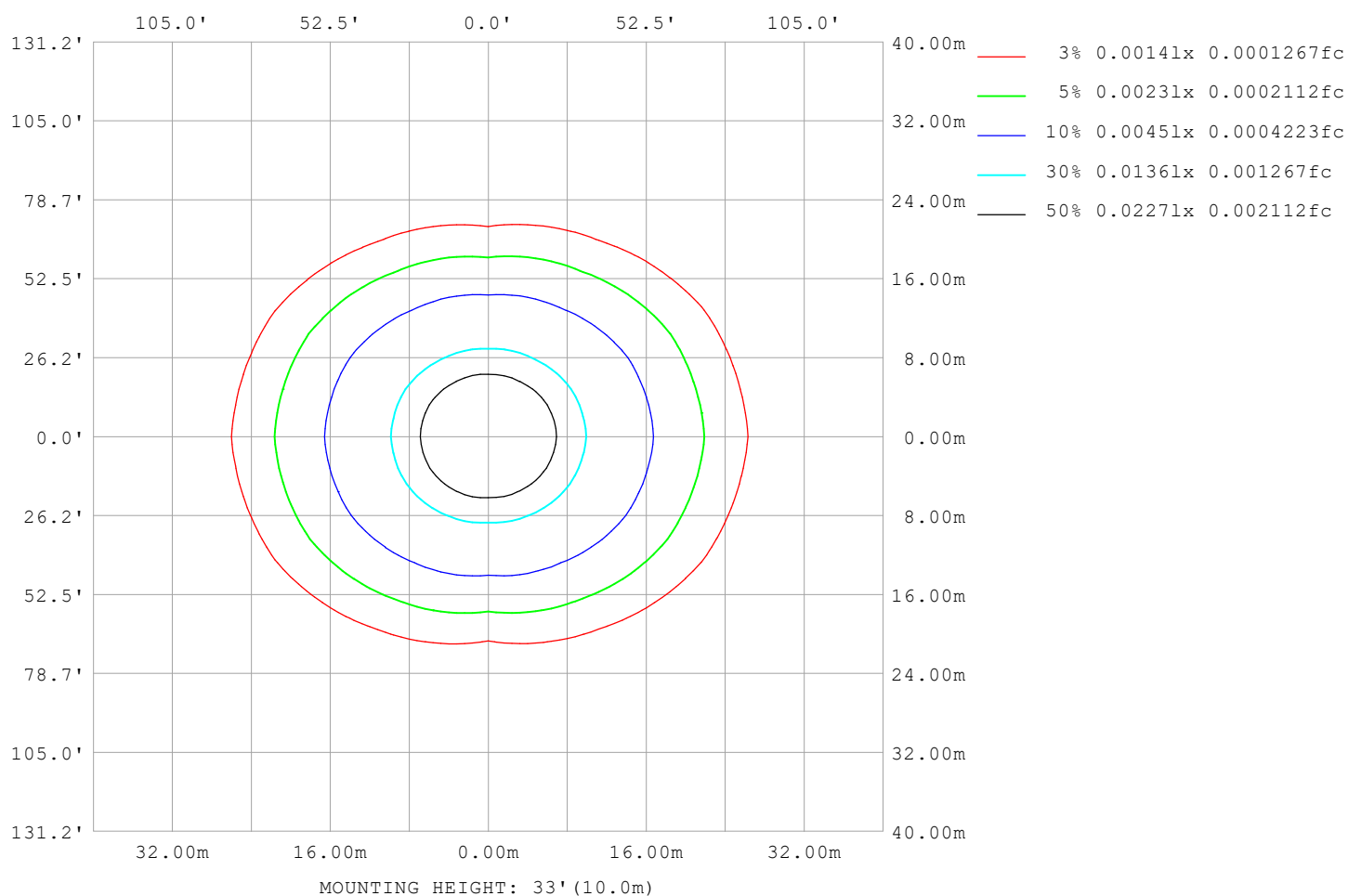
Note:The Curves indicate the illuminated area and the average illumination when the luminaire is at different distance.

C Range: 0 - 360DEG  
C Interval: 30.0DEG  
Test Speed: HIGH  
Temperature:25.3℃  
Operators:  
Test Date:2025-03-10

γ Range: 0 - 180DEG  
γ Interval: 1.0DEG  
Test System:EVERFINE GO-2000B\_V1 SYSTEM V2.00.488  
Humidity:65.0%  
Test Distance:6.360m [K=1.0000]  
Remarks:

## ISOLUX DIAGRAM

Test:U:24.00V I:0.1664A P:3.994W PF:1.000 Freq:0Hz Lamp Flux:21.6346x1 lm		
NAME: SF21-24V-5050-60-RGBW(5000K)-B	TYPE:	WEIGHT:
SPEC.:	DIM.: Length=1m	SERIAL No.:
MFR.: OLympia lighting	SUR.:	Shielding Angle:



C Range: 0 - 360DEG  
C Interval: 30.0DEG  
Test Speed: HIGH  
Temperature: 25.3°C  
Operators:  
Test Date: 2025-03-10

γ Range: 0 - 180DEG  
γ Interval: 1.0DEG  
Test System: EVERFINE GO-2000B\_V1 SYSTEM V2.00.488  
Humidity: 65.0%  
Test Distance: 6.360m [K=1.0000]  
Remarks:

## LED Avg.L Report

Test:U:24.00V I:0.1664A P:3.994W PF:1.000 Freq:0Hz Lamp Flux:21.6346x1 lm		
NAME: SF21-24V-5050-60-RGBW(5000K)-B	TYPE:	WEIGHT:
SPEC.:	DIM.: Length=1m	SERIAL No.:
MFR.: OLympia lighting	SUR.:	Shielding Angle:

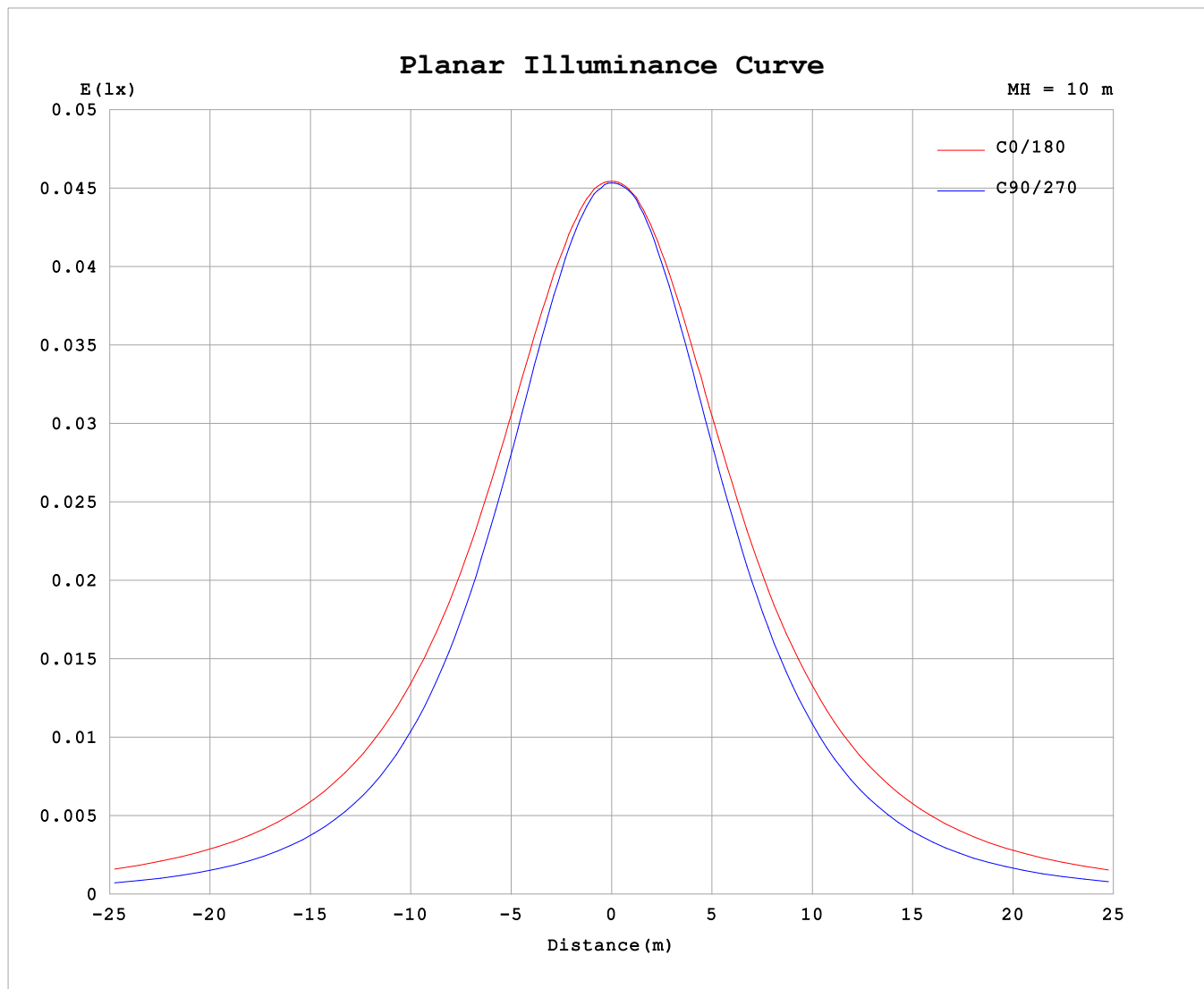
AvgL	cd/m2
L_0~180 (65) av	644
L_0~180 (75) av	931
L_0~180 (85) av	2382
L_90~270 (65) av	347
L_90~270 (75) av	341
L_90~270 (85) av	399
L_45 (65) av	513
L_45 (75) av	692
L_45 (85) av	1666

Standard: GB/T 29293-2012

C Range: 0 - 360DEG  
C Interval: 30.0DEG  
Test Speed: HIGH  
Temperature:25.3℃  
Operators:  
Test Date:2025-03-10

γ Range: 0 - 180DEG  
γ Interval: 1.0DEG  
Test System:EVERFINE GO-2000B\_V1 SYSTEM V2.00.488  
Humidity:65.0%  
Test Distance:6.360m [K=1.0000]  
Remarks:

## Planar Illuminance Curve



C Range: 0 - 360DEG  
C Interval: 30.0DEG  
Test Speed: HIGH  
Temperature: 25.3 °C  
Operators:  
Test Date: 2025-03-10

$\gamma$  Range: 0 - 180DEG  
 $\gamma$  Interval: 1.0DEG  
Test System: EVERFINE GO-2000B\_V1 SYSTEM V2.00.488  
Humidity: 65.0%  
Test Distance: 6.360m [K=1.0000]  
Remarks:

## LUMINOUS DISTRIBUTION INTENSITY DATA

Test:U:24.00V I:0.1664A P:3.994W PF:1.000 Freq:0Hz Lamp Flux:21.6346x1 lm		
NAME: SF21-24V-5050-60-RGBW(5000K)-B	TYPE:	WEIGHT:
SPEC.:	DIM.: Length=1m	SERIAL No.:
MFR.: OLYMPIA lighting	SUR.:	Shielding Angle:

Table--1

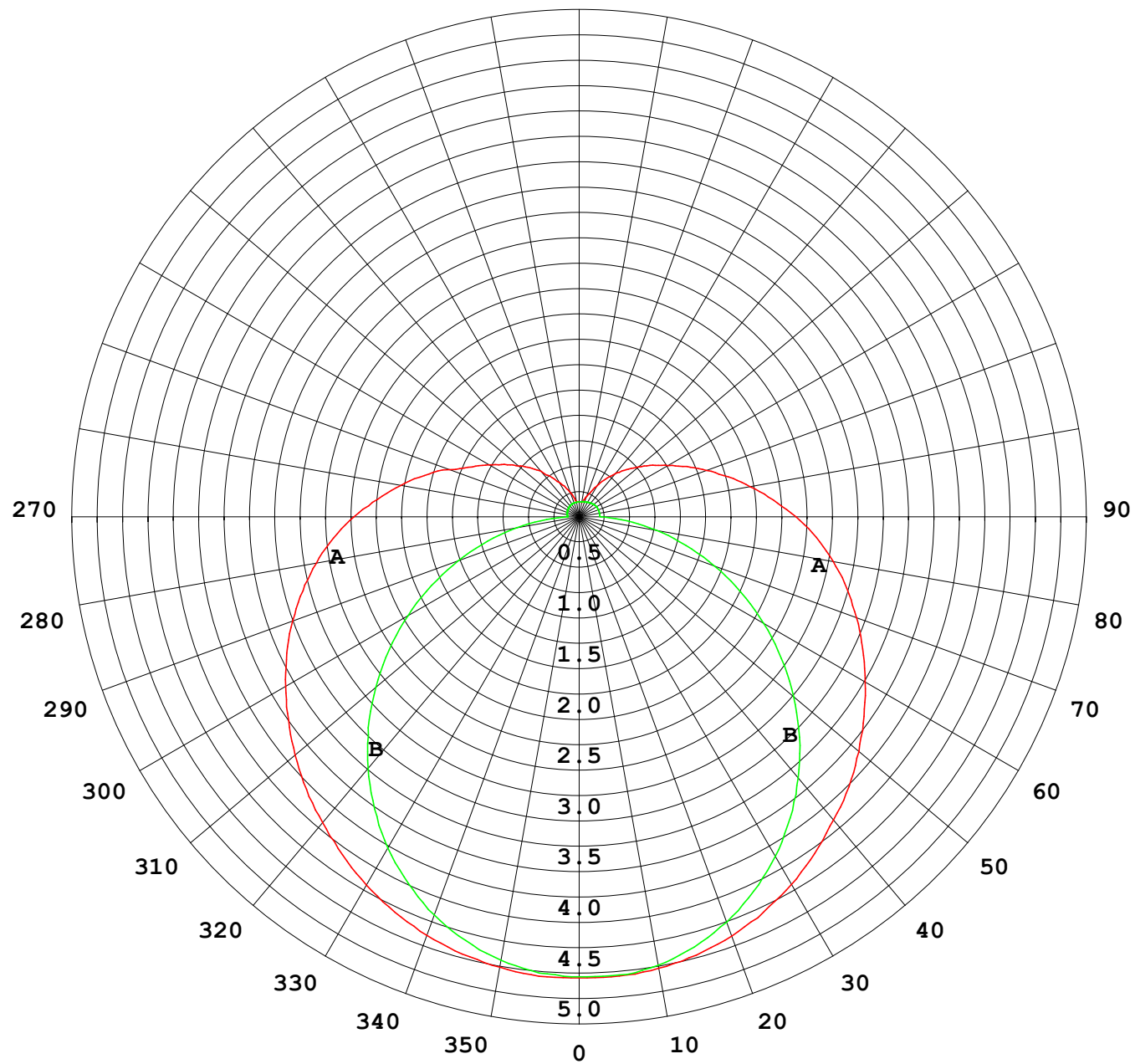
UNIT: cd

C (DEG) γ (DEG)	0	30	60	90	120	150	180	210	240	270	300	330						
0	4.54	4.54	4.54	4.54	4.54	4.54	4.54	4.54	4.54	4.54	4.54	4.54						
5	4.54	4.52	4.53	4.52	4.54	4.53	4.54	4.54	4.52	4.54	4.52	4.54						
10	4.50	4.47	4.47	4.44	4.49	4.50	4.51	4.53	4.49	4.49	4.47	4.50						
15	4.46	4.41	4.37	4.33	4.40	4.43	4.47	4.47	4.40	4.39	4.39	4.45						
20	4.38	4.31	4.24	4.18	4.28	4.35	4.39	4.39	4.28	4.26	4.26	4.36						
25	4.29	4.20	4.08	3.99	4.11	4.22	4.29	4.27	4.13	4.08	4.11	4.25						
30	4.19	4.07	3.89	3.78	3.92	4.09	4.18	4.14	3.94	3.87	3.93	4.12						
35	4.06	3.91	3.67	3.52	3.71	3.93	4.05	3.98	3.74	3.63	3.73	3.97						
40	3.93	3.74	3.43	3.24	3.46	3.75	3.90	3.80	3.51	3.36	3.50	3.81						
45	3.80	3.56	3.17	2.94	3.20	3.57	3.76	3.62	3.25	3.08	3.25	3.64						
50	3.65	3.38	2.90	2.62	2.92	3.38	3.60	3.43	2.98	2.76	2.99	3.46						
55	3.49	3.18	2.62	2.29	2.65	3.18	3.42	3.23	2.70	2.44	2.72	3.27						
60	3.33	2.99	2.35	1.95	2.38	2.97	3.25	3.02	2.43	2.10	2.45	3.08						
65	3.18	2.81	2.08	1.61	2.11	2.78	3.08	2.83	2.16	1.76	2.19	2.90						
70	3.00	2.62	1.83	1.26	1.84	2.58	2.91	2.62	1.89	1.42	1.94	2.71						
75	2.81	2.44	1.60	0.94	1.60	2.40	2.73	2.44	1.64	1.09	1.70	2.53						
80	2.63	2.25	1.38	0.63	1.38	2.20	2.54	2.24	1.41	0.77	1.49	2.34						
85	2.43	2.05	1.19	0.32	1.19	2.01	2.35	2.05	1.21	0.48	1.29	2.14						
90	2.22	1.85	1.01	0.12	1.01	1.81	2.14	1.84	1.03	0.21	1.10	1.94						
95	1.99	1.65	0.87	0.12	0.86	1.61	1.92	1.64	0.87	0.21	0.94	1.73						
100	1.78	1.47	0.66	0.12	0.74	1.43	1.71	1.45	0.74	0.21	0.76	1.55						
105	1.58	1.25	0.53	0.13	0.64	1.25	1.52	1.29	0.64	0.21	0.60	1.34						
110	1.36	1.04	0.46	0.13	0.57	1.09	1.34	1.13	0.57	0.21	0.53	1.15						
115	1.16	0.90	0.42	0.13	0.50	0.96	1.17	0.99	0.50	0.20	0.48	1.01						
120	1.03	0.78	0.39	0.13	0.45	0.84	1.01	0.87	0.44	0.20	0.41	0.88						
125	0.90	0.68	0.33	0.14	0.39	0.74	0.89	0.76	0.39	0.19	0.36	0.76						
130	0.78	0.61	0.30	0.14	0.34	0.63	0.76	0.66	0.34	0.19	0.31	0.67						
135	0.68	0.49	0.27	0.14	0.28	0.55	0.66	0.57	0.28	0.18	0.27	0.59						
140	0.59	0.40	0.23	0.14	0.23	0.46	0.56	0.49	0.24	0.18	0.23	0.43						
145	0.47	0.31	0.21	0.14	0.21	0.38	0.46	0.41	0.21	0.17	0.20	0.36						
150	0.39	0.25	0.19	0.14	0.18	0.29	0.35	0.33	0.18	0.16	0.17	0.28						
155	0.32	0.21	0.16	0.15	0.16	0.23	0.27	0.26	0.15	0.16	0.15	0.22						
160	0.26	0.18	0.15	0.15	0.15	0.19	0.21	0.20	0.15	0.16	0.15	0.19						
165	0.20	0.15	0.15	0.15	0.15	0.15	0.16	0.18	0.15	0.16	0.15	0.16						
170	0.15	0.15	0.15	0.15	0.15	0.15	0.15	0.15	0.15	0.15	0.15	0.15						
175	0.15	0.15	0.15	0.15	0.15	0.15	0.15	0.15	0.15	0.15	0.15	0.15						
180	0.15	0.15	0.15	0.15	0.15	0.15	0.15	0.15	0.15	0.15	0.15	0.15						

C Range: 0 - 360DEG  
C Interval: 30.0DEG  
Test Speed: HIGH  
Temperature:25.3℃  
Operators:  
Test Date:2025-03-10

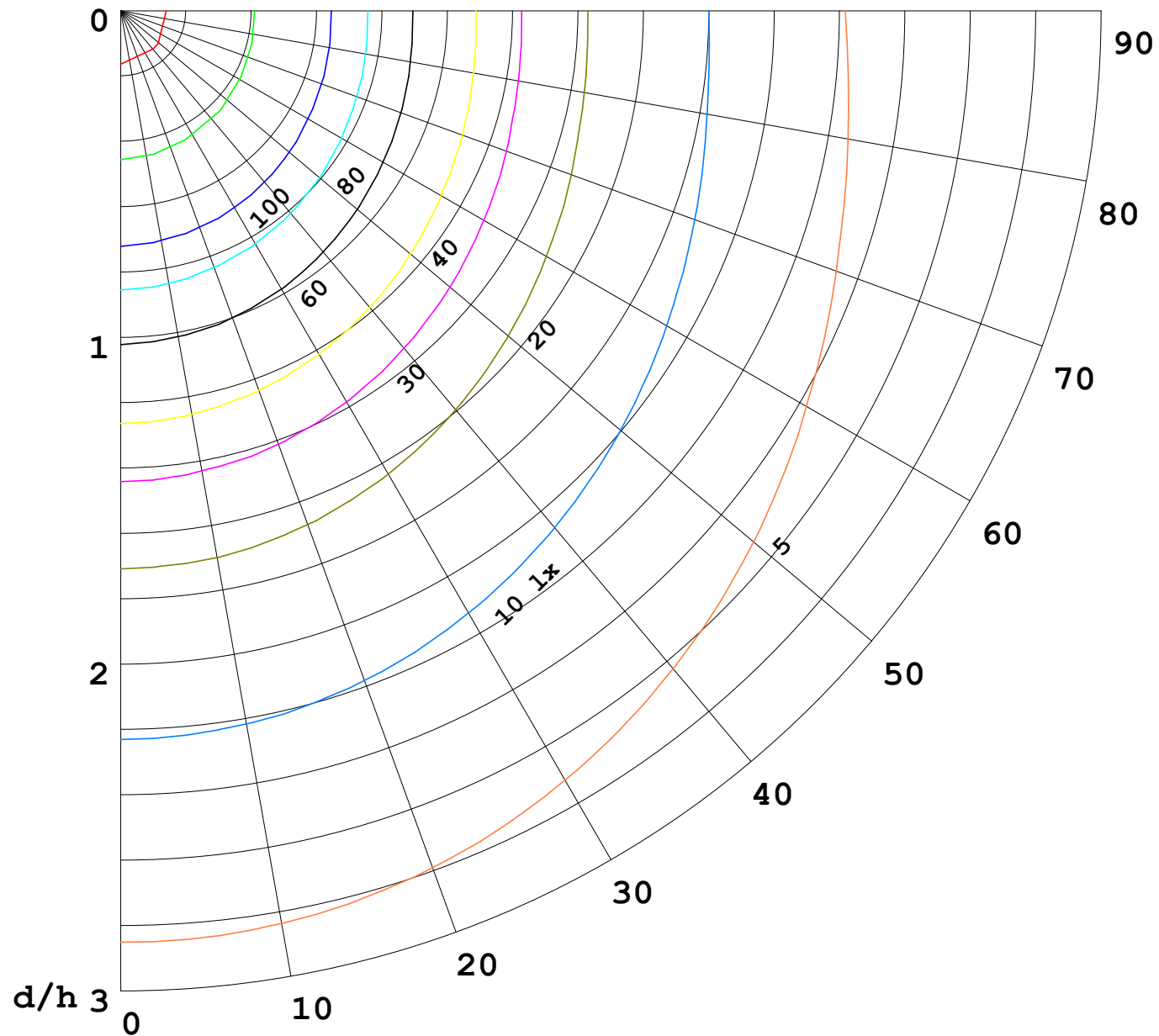
γ Range: 0 - 180DEG  
γ Interval: 1.0DEG  
Test System:EVERFINE GO-2000B\_V1 SYSTEM V2.00.488  
Humidity:65.0%  
Test Distance:6.360m [K=1.0000]  
Remarks:

I (cd)



1000 lm

$\kappa = 1$



F = 1000 lm  
 K = 0.7  
 Hcc = 0.8 m  
 Hfc = 0.0 m  
 Eave = 100 lx

	Pcc	Pw	Pfc
—————	70	50	30
—————	50	30	20

