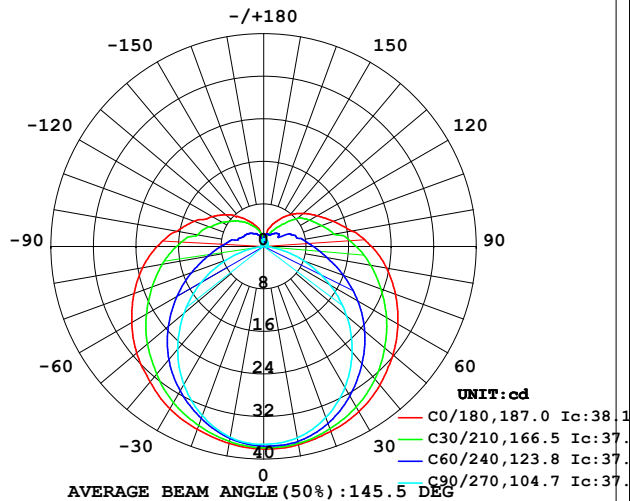


## LUMINAIRE PHOTOMETRIC TEST REPORT

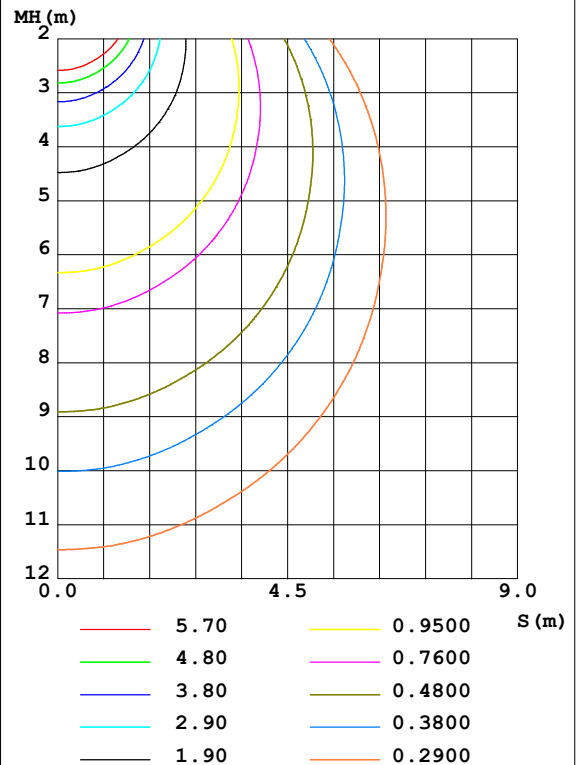
Test:U:24.00V I:0.6641A P:15.94W PF:1.000 Freq:50.00Hz Lamp Flux:186.529x1 lm		
NAME: SF21-24V-5050-72-RGB	TYPE: 硅胶	WEIGHT:
SPEC.:	DIM.: 28mm*11.5mm	SERIAL No.:2021121004
MFR.: OLYMPIA	SUR.:1*0.016	Shielding Angle:

DATA OF LAMP		PHOTOMETRIC DATA Eff: 11.70 lm/W			
MODEL	5050	I <sub>max</sub> (cd)	38.10	S/MH (C0/180)	1.39
NOMINAL POWER (W)	13	LOR (%)	100.0	S/MH (C90/270)	1.21
RATED VOLTAGE (V)	24	TOTAL FLUX (lm)	186.53	η UP, DN (C0-180)	11.0, 38.5
NOMINAL FLUX (lm)	186.529	CIE CLASS	SEMI-D.	η UP, DN (C180-360)	11.5, 38.9
LAMPS INSIDE	1	η up (%)	22.6	CIBSE SHR NOM	1.50
TEST VOLTAGE (V)	24	η down (%)	77.4	CIBSE SHR MAX	1.55

LUMINOUS INTENSITY DISTRIBUTION DIAGRAM



C0 PLANE ISOLUX DIAGRAM (UNIT: lx)



C Range: 0 - 360DEG  
C Interval: 30.0DEG  
Test Speed: HIGH  
Temperature: 25.3DEG  
Operators: LPC  
Test Date: 2021-12-10

γ Range: 0 - 180DEG  
γ Interval: 1.0DEG  
Test System: EVERFINE GO-2000B\_V1 SYSTEM V2.0.362  
Humidity: 65.0%  
Test Distance: 9.200m [K=1.0000]  
Remarks:

## ZONAL FLUX DIAGRAM

## ZONAL FLUX DIAGRAM:

$\gamma$	C0	C45	C90	C135	C180	C225	C270	C315	$\gamma$	$\Phi$ zone	$\Phi$ total	%lum, lamp
10	37.85	37.42	36.56	36.07	37.60	36.95	36.42	36.87	0- 10	3.550	3.550	1.9,1.9
20	37.00	35.94	34.24	34.29	36.59	35.11	33.84	35.45	10- 20	10.23	13.78	7.39,7.39
30	35.85	33.65	30.61	31.69	35.27	32.67	30.02	33.19	20- 30	15.76	29.54	15.8,15.8
40	34.01	30.69	25.88	28.50	33.22	29.54	25.18	30.55	30- 40	19.65	49.18	26.4,26.4
50	31.73	27.25	20.40	24.91	31.19	25.98	19.59	27.47	40- 50	21.64	70.82	38,38
60	29.15	23.55	14.36	21.14	28.65	22.15	13.57	23.94	50- 60	21.72	92.54	49.6,49.6
70	26.37	19.74	8.166	17.42	25.96	18.39	7.493	20.31	60- 70	20.11	112.6	60.4,60.4
80	23.46	16.26	2.625	14.17	23.14	15.03	2.175	16.93	70- 80	17.38	130.0	69.7,69.7
90	20.29	13.39	0.5467	11.43	20.04	12.22	0.3758	14.11	80- 90	14.42	144.4	77.4,77.4
100	16.76	10.44	0.5983	8.959	16.60	9.544	0.4319	10.98	90-100	11.86	156.3	83.8,83.8
110	13.92	8.930	0.6369	7.366	13.93	7.811	0.4798	9.103	100-110	9.195	165.5	88.7,88.7
120	11.64	6.873	0.6936	6.028	11.22	6.595	0.5125	7.186	110-120	7.166	172.7	92.6,92.6
130	9.702	5.957	0.7942	5.068	9.315	5.629	0.5928	6.637	120-130	5.415	178.1	95.5,95.5
140	7.837	4.326	0.9500	4.086	7.295	4.679	0.6332	4.605	130-140	3.860	181.9	97.5,97.5
150	5.897	2.983	1.166	3.151	5.496	3.722	0.8189	3.518	140-150	2.421	184.4	98.8,98.8
160	4.078	2.427	1.292	2.133	3.964	2.797	1.100	2.818	150-160	1.374	185.7	99.6,99.6
170	1.790	2.154	1.317	1.144	1.688	1.792	1.324	2.520	160-170	0.6333	186.4	99.9,99.9
180	0.9247	0.9750	1.287	1.412	0.9348	0.9097	1.432	1.400	170-180	0.1531	186.5	100,100
DEG	LUMINOUS INTENSITY:cd									UNIT:lm		

Conical surface Flux(90deg): 59.872 lm

%lum = 32.1%

%lamp = 32.1%

Conical surface Flux(120deg): 92.537 lm

%lum = 49.6%

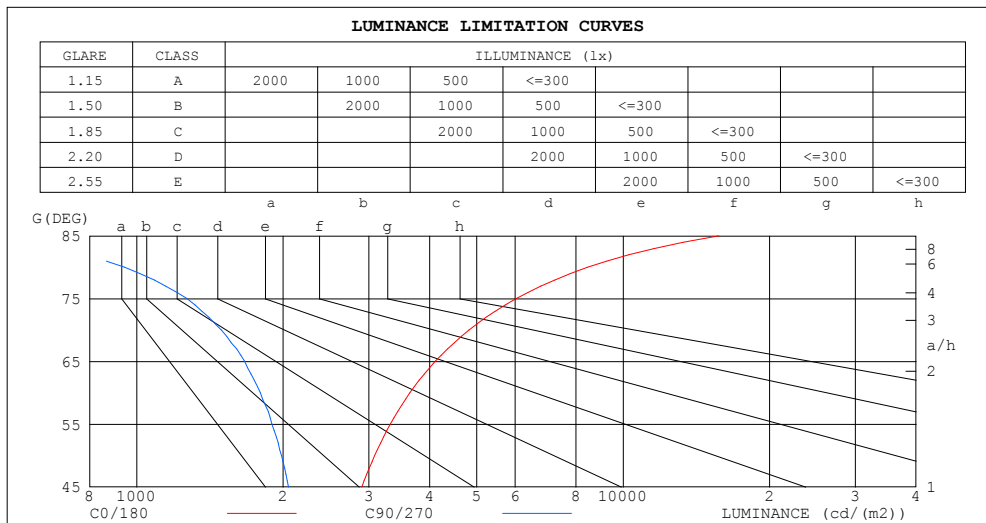
%lamp = 49.6%

C Range: 0 - 360DEG  
 C Interval: 30.0DEG  
 Test Speed: HIGH  
 Temperature:25.3DEG  
 Operators:LPC  
 Test Date:2021-12-10

$\gamma$  Range: 0 - 180DEG  
 $\gamma$  Interval: 1.0DEG  
 Test System:EVERFINE GO-2000B\_V1 SYSTEM V2.0.362  
 Humidity:65.0%  
 Test Distance:9.200m [K=1.0000]  
 Remarks:

## LUMINANCE LIMITATION CURVES

Test:U:24.00V I:0.6641A P:15.94W PF:1.000 Freq:50.00Hz Lamp Flux:186.529x1 lm		
NAME: SF21-24V-5050-72-RGB	TYPE: 硅胶	WEIGHT:
SPEC.:	DIM.: 28mm*11.5mm	SERIAL No.:2021121004
MFR.: OLYMPIA	SUR.:1*0.016	Shielding Angle:



LUMINANCE cd/(m2)		
G (DEG)	C0/180	C90/270
85	15723	579
80	8443	945
75	6022	1270
70	4819	1492
65	4106	1666
60	3644	1795
55	3321	1896
50	3085	1984
45	2903	2052

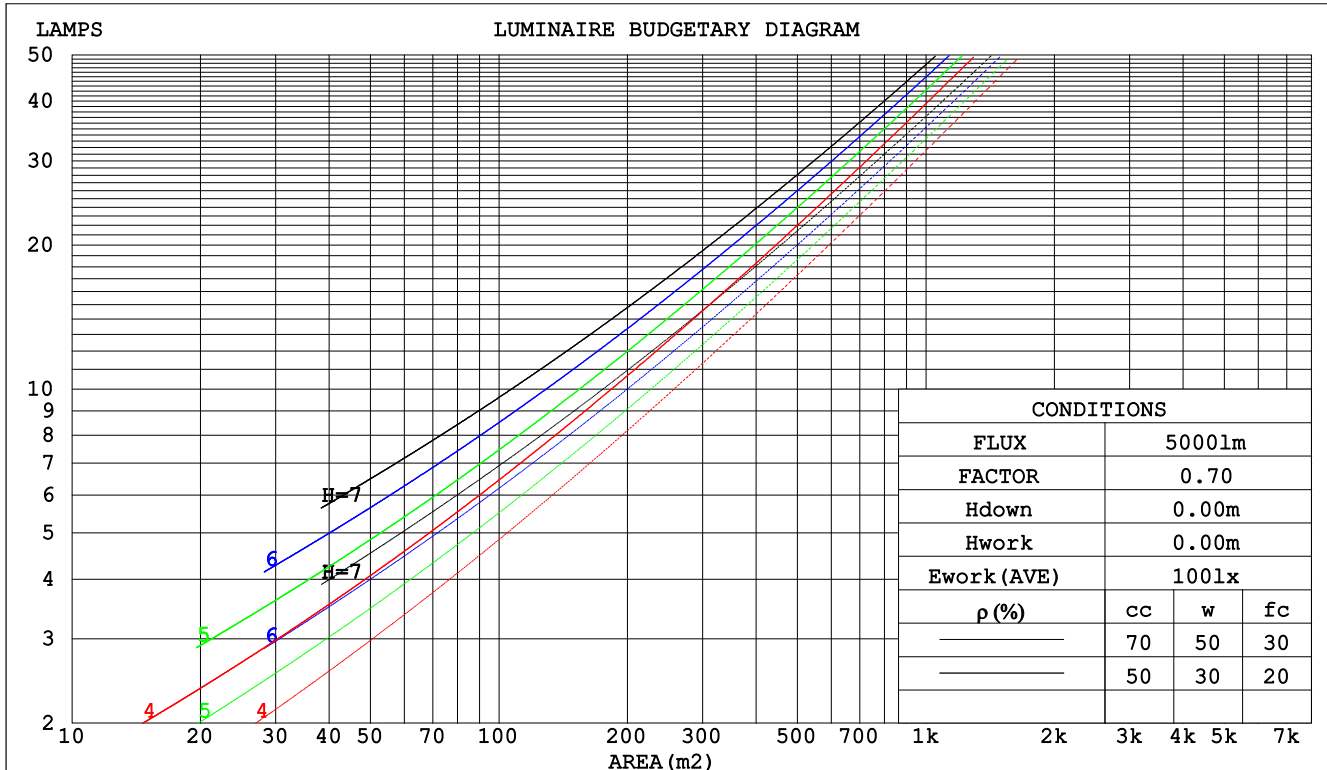
C Range: 0 - 360DEG  
C Interval: 30.0DEG  
Test Speed: HIGH  
Temperature:25.3DEG  
Operators:LPC  
Test Date:2021-12-10

$\gamma$  Range: 0 - 180DEG  
 $\gamma$  Interval: 1.0DEG  
Test System:EVERFINE GO-2000B\_V1 SYSTEM V2.0.362  
Humidity:65.0%  
Test Distance:9.200m [K=1.0000]  
Remarks:

## CU AND LUMINAIRE BUDGETARY ESTIMATE DIAGRAM

Test:U:24.00V I:0.6641A P:15.94W PF:1.000 Freq:50.00Hz Lamp Flux:186.529x1 lm		
NAME: SF21-24V-5050-72-RGB	TYPE: 硅胶	WEIGHT:
SPEC.:	DIM.: 28mm*11.5mm	SERIAL No.:2021121004
MFR.: OLYMPIA	SUR.:1*0.016	Shielding Angle:

pcc	80%			70%			50%			30%			10%			0
pw	50%	30%	10%	50%	30%	10%	50%	30%	10%	50%	30%	10%	50%	30%	10%	0
pfc	20%			20%			20%			20%			20%			0
RCR	RCR:Room Cavity Ratio						Coefficients of Utilization(CU)									
0.0	1.14	1.14	1.14	1.08	1.08	1.08	.99	.99	.99	.90	.90	.90	.81	.81	.81	.77
1.0	.94	.89	.84	.90	.85	.81	.81	.78	.74	.74	.71	.68	.66	.64	.62	.58
2.0	.81	.73	.66	.77	.70	.64	.70	.64	.59	.63	.58	.54	.57	.53	.50	.46
3.0	.70	.61	.54	.67	.58	.52	.60	.54	.48	.55	.49	.44	.49	.45	.41	.38
4.0	.61	.52	.45	.59	.50	.43	.53	.46	.40	.48	.42	.37	.43	.38	.34	.31
5.0	.54	.45	.38	.52	.43	.37	.47	.40	.34	.43	.37	.32	.39	.34	.29	.27
6.0	.49	.39	.33	.47	.38	.32	.42	.35	.30	.39	.32	.28	.35	.30	.26	.23
7.0	.44	.35	.29	.42	.34	.28	.38	.31	.26	.35	.29	.24	.32	.27	.23	.20
8.0	.40	.31	.25	.38	.30	.24	.35	.28	.23	.32	.26	.21	.29	.24	.20	.18
9.0	.36	.28	.22	.35	.27	.22	.32	.25	.21	.29	.24	.19	.27	.22	.18	.16
10.0	.33	.25	.20	.32	.25	.20	.30	.23	.18	.27	.21	.17	.25	.20	.16	.14



C Range: 0 - 360DEG  
 C Interval: 30.0DEG  
 Test Speed: HIGH  
 Temperature:25.3DEG  
 Operators:LPC  
 Test Date:2021-12-10

γ Range: 0 - 180DEG  
 γ Interval: 1.0DEG  
 Test System:EVERFINE GO-2000B\_V1 SYSTEM V2.0.362  
 Humidity:65.0%  
 Test Distance:9.200m [K=1.0000]  
 Remarks:

## WEC AND CCEC

Test:U:24.00V I:0.6641A P:15.94W PF:1.000 Freq:50.00Hz Lamp Flux:186.529x1 lm		
NAME: SF21-24V-5050-72-RGB	TYPE: 硅胶	WEIGHT:
SPEC.:	DIM.: 28mm*11.5mm	SERIAL No.:2021121004
MFR.: OLYMPIA	SUR.:1*0.016	Shielding Angle:

pcc	80%			70%			50%			30%			10%			0	
pw	50%	30%	10%	50%	30%	10%	50%	30%	10%	50%	30%	10%	50%	30%	10%	0	
pfc	20%			20%			20%			20%			20%			0	
RCR	RCR:Room Cavity Ratio						Wall Exitance Coefficients(WEC)										
0.0																	
1.0	.387	.220	.070	.373	.213	.068	.346	.199	.063	.322	.186	.060	.300	.174	.056		
2.0	.333	.183	.056	.320	.177	.054	.297	.165	.051	.274	.154	.048	.254	.144	.045		
3.0	.295	.157	.047	.284	.152	.046	.262	.142	.043	.242	.133	.041	.223	.124	.038		
4.0	.265	.138	.041	.255	.133	.039	.235	.125	.037	.217	.117	.035	.200	.109	.033		
5.0	.241	.123	.036	.232	.119	.035	.214	.111	.033	.197	.104	.031	.181	.097	.029		
6.0	.221	.111	.032	.212	.107	.031	.196	.100	.029	.180	.094	.028	.166	.087	.026		
7.0	.204	.101	.029	.196	.097	.028	.181	.091	.026	.166	.085	.025	.153	.080	.023		
8.0	.189	.092	.026	.181	.089	.025	.168	.084	.024	.155	.078	.023	.142	.073	.021		
9.0	.176	.085	.024	.169	.082	.023	.156	.077	.022	.144	.072	.021	.133	.068	.020		
10.0	.165	.079	.022	.158	.076	.021	.146	.072	.020	.135	.067	.019	.125	.063	.018		

pcc	80%			70%			50%			30%			10%			0	
pw	50%	30%	10%	50%	30%	10%	50%	30%	10%	50%	30%	10%	50%	30%	10%	0	
pfc	20%			20%			20%			20%			20%			0	
RCR	RCR:Room Cavity Ratio						Ceiling Cavity Exitance Coefficients(CCEC)										
0.0	.362	.362	.362	.310	.310	.310	.211	.211	.211	.121	.121	.121	.039	.039	.039		
1.0	.359	.329	.302	.307	.282	.260	.210	.194	.180	.121	.112	.104	.039	.036	.034		
2.0	.352	.306	.267	.302	.264	.231	.207	.182	.161	.119	.106	.095	.038	.034	.031		
3.0	.345	.290	.246	.296	.250	.213	.203	.174	.150	.117	.101	.088	.038	.033	.029		
4.0	.337	.278	.232	.289	.240	.202	.199	.167	.142	.115	.098	.084	.037	.032	.028		
5.0	.329	.268	.222	.283	.232	.193	.195	.162	.137	.113	.095	.081	.036	.031	.027		
6.0	.322	.260	.215	.277	.225	.188	.191	.158	.133	.111	.093	.079	.036	.030	.026		
7.0	.315	.253	.210	.271	.220	.183	.187	.154	.130	.109	.091	.077	.035	.030	.026		
8.0	.308	.248	.206	.265	.215	.180	.184	.151	.128	.107	.089	.076	.035	.029	.025		
9.0	.302	.243	.203	.260	.211	.177	.180	.148	.126	.105	.088	.075	.034	.029	.025		
10.0	.296	.239	.201	.255	.208	.175	.177	.146	.125	.103	.086	.074	.034	.028	.025		

C Range: 0 - 360DEG  
 C Interval: 30.0DEG  
 Test Speed: HIGH  
 Temperature:25.3DEG  
 Operators:LPC  
 Test Date:2021-12-10

γ Range: 0 - 180DEG  
 γ Interval: 1.0DEG  
 Test System:EVERFINE GO-2000B\_V1 SYSTEM V2.0.362  
 Humidity:65.0%  
 Test Distance:9.200m [K=1.0000]  
 Remarks:

UGR(Unified Glare Rating) Table

Test:U:24.00V I:0.6641A P:15.94W PF:1.000 Freq:50.00Hz Lamp Flux:186.529x1 lm										
NAME: SF21-24V-5050-72-RGB					TYPE: 硅胶			WEIGHT:		
SPEC.:					DIM.: 28mm*11.5mm			SERIAL No.:2021121004		
MFR.: OLYMPIA					SUR.:1*0.016			Shielding Angle:		
ceiling/cavity	0.7	0.7	0.5	0.5	0.3	0.7	0.7	0.5	0.5	0.3
walls	0.5	0.3	0.5	0.3	0.3	0.5	0.3	0.5	0.3	0.3
working plane	0.2	0.2	0.2	0.2	0.2	0.2	0.2	0.2	0.2	0.2
Room dimensions	Viewed crosswise					Viewed endwise				
x = 2H y = 2H	22.0	23.4	22.6	23.9	24.6	19.5	20.8	20.0	21.4	22.0
3H	24.8	26.0	25.4	26.6	27.3	20.9	22.1	21.5	22.7	23.4
4H	26.4	27.5	27.0	28.2	28.9	21.4	22.6	22.1	23.2	23.9
6H	28.1	29.2	28.8	29.9	30.6	21.8	22.9	22.4	23.5	24.2
8H	29.1	30.2	29.7	30.8	31.6	21.9	22.9	22.5	23.6	24.3
12H	30.2	31.2	30.9	31.9	32.7	21.9	22.9	22.5	23.6	24.3
4H 2H	22.6	23.7	23.2	24.4	25.1	20.8	21.9	21.4	22.5	23.3
3H	25.6	26.6	26.3	27.3	28.1	22.5	23.6	23.2	24.2	25.0
4H	27.4	28.3	28.1	29.0	29.8	23.3	24.3	24.0	24.9	25.7
6H	29.4	30.2	30.1	30.9	31.7	23.9	24.8	24.6	25.5	26.3
8H	30.4	31.2	31.2	31.9	32.8	24.1	24.9	24.8	25.6	26.5
12H	31.7	32.4	32.4	33.1	34.0	24.3	25.0	25.0	25.7	26.6
8H 4H	27.7	28.5	28.5	29.2	30.1	24.6	25.4	25.3	26.1	26.9
6H	30.0	30.7	30.8	31.4	32.3	25.7	26.3	26.4	27.1	28.0
8H	31.3	31.9	32.1	32.7	33.6	26.1	26.7	26.9	27.5	28.4
12H	32.8	33.4	33.6	34.1	35.1	26.5	27.0	27.3	27.8	28.7
12H 4H	27.8	28.5	28.5	29.2	30.1	25.0	25.7	25.8	26.5	27.3
6H	30.1	30.7	30.9	31.5	32.4	26.4	27.0	27.1	27.7	28.6
8H	31.6	32.1	32.3	32.9	33.8	27.0	27.6	27.8	28.3	29.3
Variations with the observer position at spacings:										
S = 1.0H	+ 0.1 / - 0.1					+ 0.1 / - 0.1				
1.5H	+ 0.2 / - 0.3					+ 0.2 / - 0.3				
2.0H	+ 0.2 / - 0.3					+ 0.3 / - 0.4				

CIE Pub.117, 186.5 lm Total Lamp Luminous Flux Correct (8log(F/F0) = -5.8)

C Range: 0 - 360DEG  
 C Interval: 30.0DEG  
 Test Speed: HIGH  
 Temperature:25.3DEG  
 Operators:LPC  
 Test Date:2021-12-10

γ Range: 0 - 180DEG  
 γ Interval: 1.0DEG  
 Test System:EVERFINE GO-2000B\_V1 SYSTEM V2.0.362  
 Humidity:65.0%  
 Test Distance:9.200m [K=1.0000]  
 Remarks:

### UTILIZATION FACTORS TABLE

Test:U:24.00V I:0.6641A P:15.94W PF:1.000 Freq:50.00Hz Lamp Flux:186.529x1 lm		
NAME: SF21-24V-5050-72-RGB	TYPE: 硅胶	WEIGHT:
SPEC.:	DIM.: 28mm*11.5mm	SERIAL No.:2021121004
MFR.: OLYMPIA	SUR.:1*0.016	Shielding Angle:

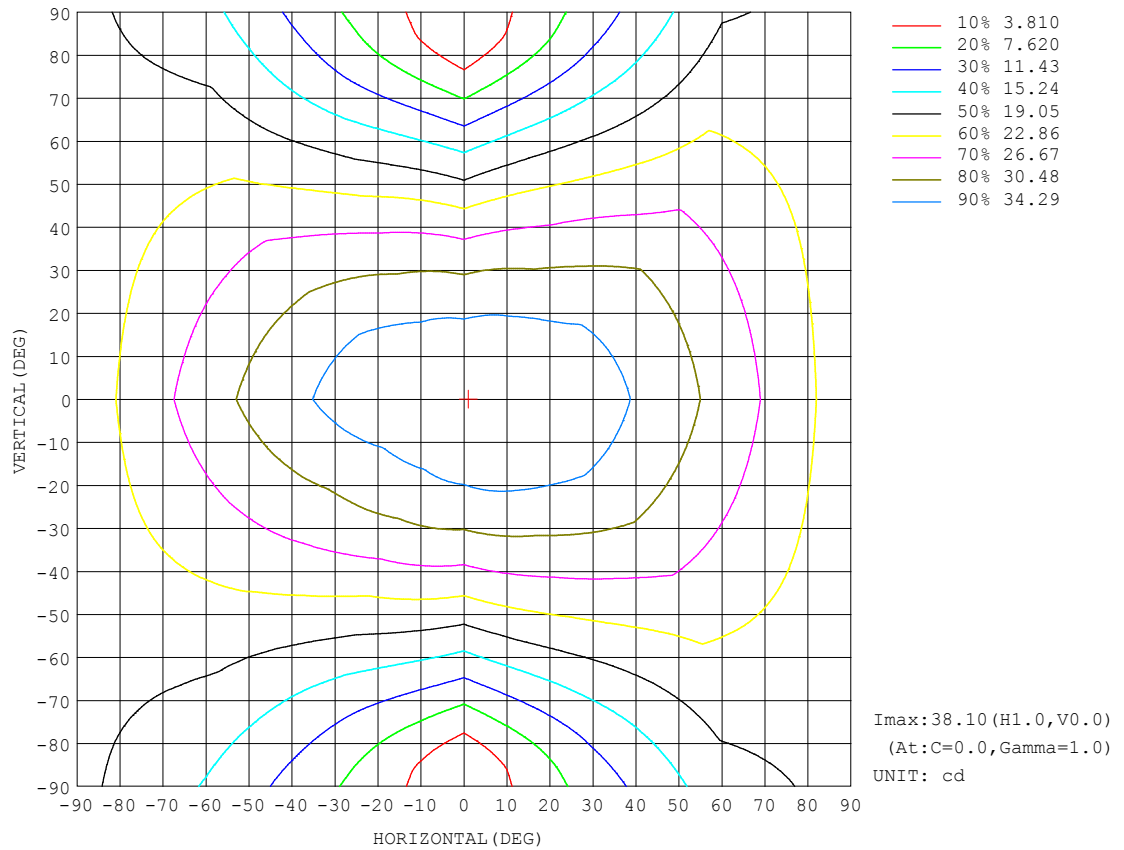
REFLECTANCE										
Ceiling	0.8	0.8	0.8	0.7	0.7	0.7	0.5	0.5	0.5	0
Walls	0.7	0.5	0.3	0.7	0.5	0.3	0.7	0.5	0.3	0
Working plane	0.2	0.2	0.2	0.2	0.2	0.2	0.2	0.2	0.2	0
ROOM INDEX	UTILIZATION FACTORS (PERCENT) $k(RI) \times RCR = 5$									
$k = 0.60$	46	34	27	45	33	26	43	32	26	19
0.80	55	42	34	54	41	34	50	40	33	25
1.00	63	50	41	61	49	41	57	49	39	30
1.25	70	57	48	67	56	47	63	53	46	35
1.50	75	63	54	72	61	53	67	57	50	39
2.00	82	71	63	79	69	61	73	64	58	45
2.50	87	76	68	83	74	66	76	69	62	49
3.00	91	81	73	87	78	71	79	72	67	52
4.00	95	87	80	91	84	78	83	77	72	57
5.00	98	91	85	94	88	82	86	81	76	60
ROOM INDEX	UF (total)									Direct
According to DIN EN 13032-2 2004			Suspended					SHRNOM = 1.25		

C Range: 0 - 360DEG  
C Interval: 30.0DEG  
Test Speed: HIGH  
Temperature:25.3DEG  
Operators:LPC  
Test Date:2021-12-10

$\gamma$  Range: 0 - 180DEG  
 $\gamma$  Interval: 1.0DEG  
Test System:EVERFINE GO-2000B\_V1 SYSTEM V2.0.362  
Humidity:65.0%  
Test Distance:9.200m [K=1.0000]  
Remarks:

## ISOCANDELA DIAGRAM

Test:U:24.00V I:0.6641A P:15.94W PF:1.000 Freq:50.00Hz Lamp Flux:186.529x1 lm		
NAME: SF21-24V-5050-72-RGB	TYPE: 硅胶	WEIGHT:
SPEC.:	DIM.: 28mm*11.5mm	SERIAL No.:2021121004
MFR.: OLYMPIA	SUR.:1*0.016	Shielding Angle:



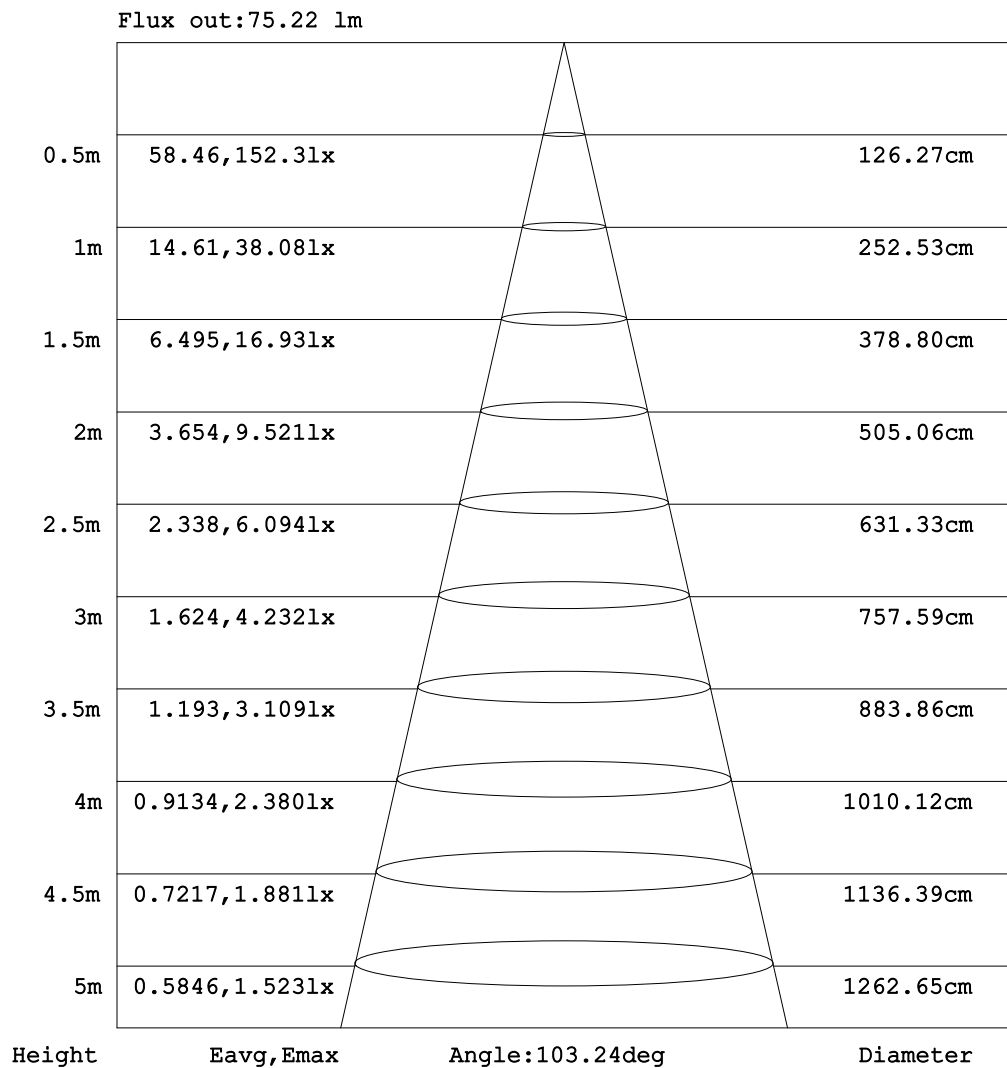
C Range: 0 - 360DEG  
C Interval: 30.0DEG  
Test Speed: HIGH  
Temperature: 25.3DEG  
Operators: LPC  
Test Date: 2021-12-10

γ Range: 0 - 180DEG  
γ Interval: 1.0DEG  
Test System: EVERFINE GO-2000B\_V1 SYSTEM V2.0.362  
Humidity: 65.0%  
Test Distance: 9.200m [K=1.0000]  
Remarks:



## AAI Figure

Test:U:24.00V I:0.6641A P:15.94W PF:1.000 Freq:50.00Hz Lamp Flux:186.529x1 lm		
NAME: SF21-24V-5050-72-RGB	TYPE: 硅胶	WEIGHT:
SPEC.:	DIM.: 28mm*11.5mm	SERIAL No.:2021121004
MFR.: OLYMPIA	SUR.:1*0.016	Shielding Angle:



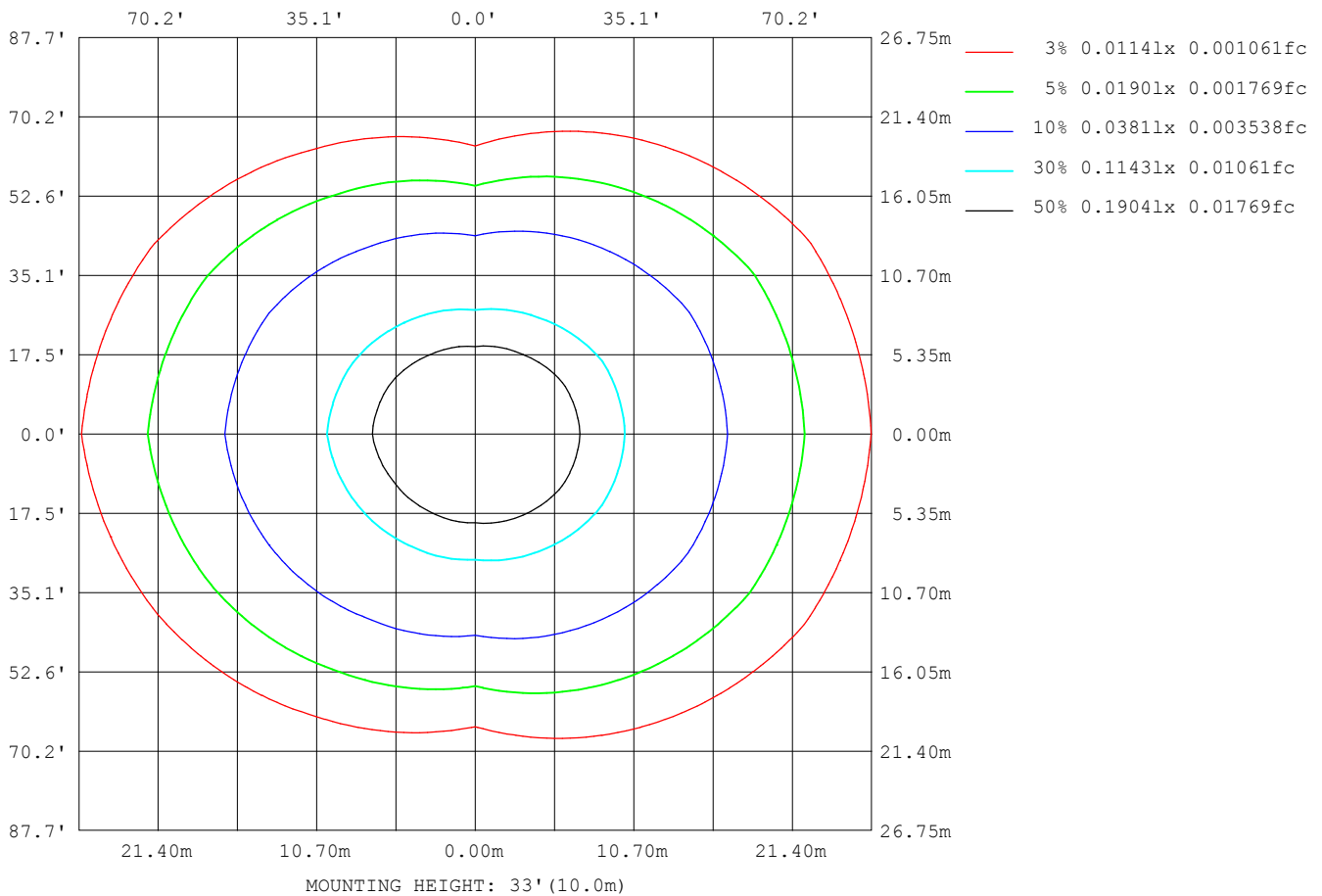
Note: The Curves indicate the illuminated area and the average illumination when the luminaire is at different distance.

C Range: 0 - 360DEG  
 C Interval: 30.0DEG  
 Test Speed: HIGH  
 Temperature: 25.3DEG  
 Operators: LPC  
 Test Date: 2021-12-10

γ Range: 0 - 180DEG  
 γ Interval: 1.0DEG  
 Test System: EVERFINE GO-2000B\_V1 SYSTEM V2.0.362  
 Humidity: 65.0%  
 Test Distance: 9.200m [K=1.0000]  
 Remarks:

## ISOLUX DIAGRAM

Test:U:24.00V I:0.6641A P:15.94W PF:1.000 Freq:50.00Hz Lamp Flux:186.529x1 lm		
NAME: SF21-24V-5050-72-RGB	TYPE: 硅胶	WEIGHT:
SPEC.:	DIM.: 28mm*11.5mm	SERIAL No.:2021121004
MFR.: OLYMPIA	SUR.:1*0.016	Shielding Angle:



C Range: 0 - 360DEG  
C Interval: 30.0DEG  
Test Speed: HIGH  
Temperature:25.3DEG  
Operators:LPC  
Test Date:2021-12-10

$\gamma$  Range: 0 - 180DEG  
 $\gamma$  Interval: 1.0DEG  
Test System:EVERFINE GO-2000B\_V1 SYSTEM V2.0.362  
Humidity:65.0%  
Test Distance:9.200m [K=1.0000]  
Remarks:

## LED Avg.L Report

Test:U:24.00V I:0.6641A P:15.94W PF:1.000 Freq:50.00Hz Lamp Flux:186.529x1 lm		
NAME: SF21-24V-5050-72-RGB	TYPE:硅胶	WEIGHT:
SPEC.:	DIM.: 28mm*11.5mm	SERIAL No.:2021121004
MFR.: OLYMPIA	SUR.:1*0.016	Shielding Angle:

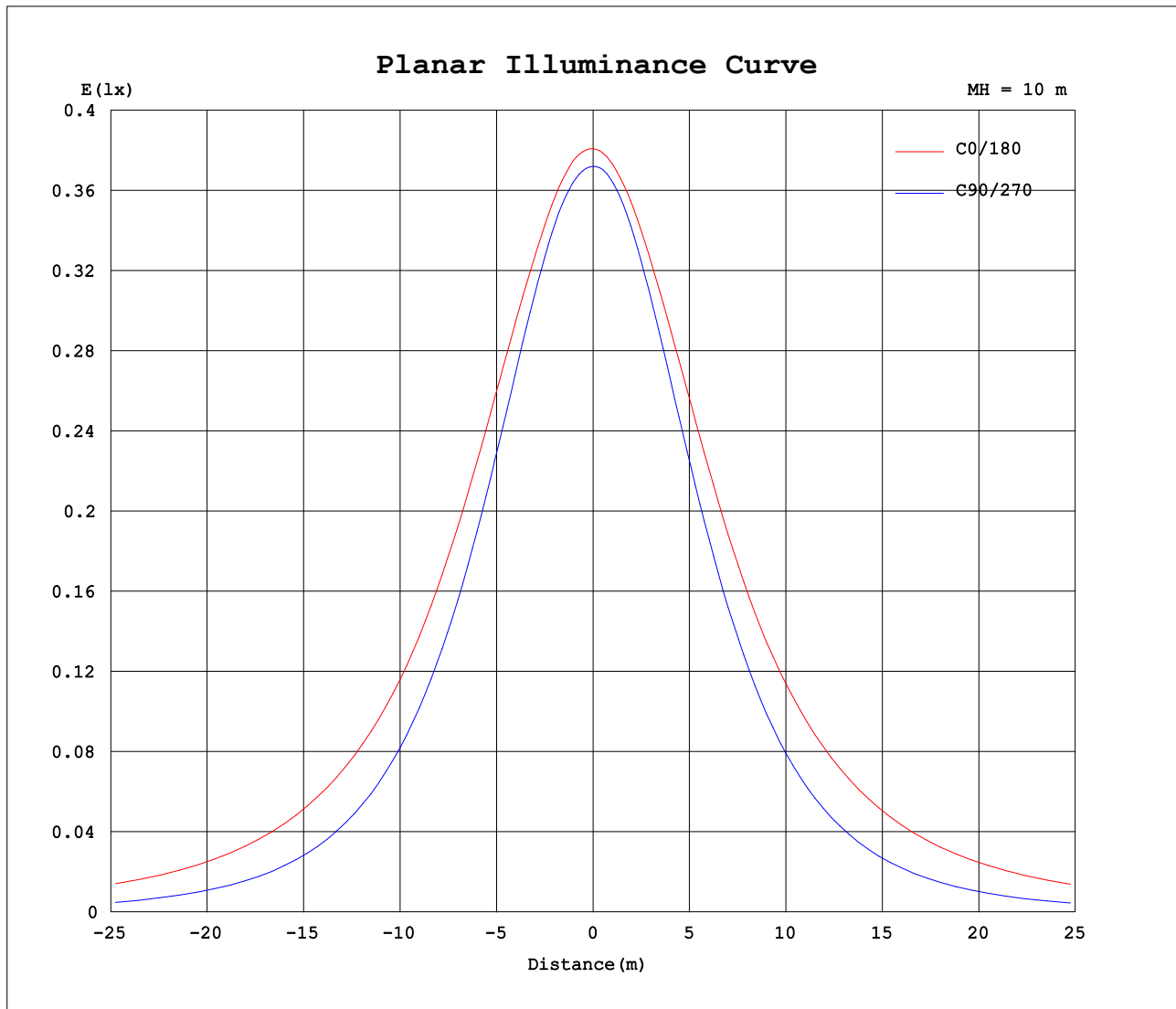
AvgL	cd/m2
L_0~180 (65) av	4073
L_0~180 (75) av	5978
L_0~180 (85) av	15620
L_90~270 (65) av	1609
L_90~270 (75) av	1196
L_90~270 (85) av	472
L_45 (65) av	3108
L_45 (75) av	4228
L_45 (85) av	10391

Standard: GB/T 29293-2012

C Range: 0 - 360DEG  
C Interval: 30.0DEG  
Test Speed: HIGH  
Temperature:25.3DEG  
Operators:LPC  
Test Date:2021-12-10

γ Range: 0 - 180DEG  
γ Interval: 1.0DEG  
Test System:EVERFINE GO-2000B\_V1 SYSTEM V2.0.362  
Humidity:65.0%  
Test Distance:9.200m [K=1.0000]  
Remarks:

## Planar Illuminance Curve



C Range: 0 - 360DEG  
C Interval: 30.0DEG  
Test Speed: HIGH  
Temperature: 25.3DEG  
Operators: LPC  
Test Date: 2021-12-10

$\gamma$  Range: 0 - 180DEG  
 $\gamma$  Interval: 1.0DEG  
Test System: EVERFINE GO-2000B\_V1 SYSTEM V2.0.362  
Humidity: 65.0%  
Test Distance: 9.200m [K=1.0000]  
Remarks:

## LUMINOUS DISTRIBUTION INTENSITY DATA

Test:U:24.00V I:0.6641A P:15.94W PF:1.000 Freq:50.00Hz Lamp Flux:186.529x1 lm		
NAME: SF21-24V-5050-72-RGB	TYPE: 硅胶	WEIGHT:
SPEC.:	DIM.: 28mm*11.5mm	SERIAL No.:2021121004
MFR.: OLYMPIA	SUR.:1*0.016	Shielding Angle:

Table--1

UNIT: cd

C (DEG) γ (DEG)	0	30	60	90	120	150	180	210	240	270	300	330							
0	38.1	37.9	37.5	37.2	37.1	36.9	38.1	37.9	37.5	37.2	37.1	36.9							
5	38.1	37.8	37.6	37.0	36.7	36.5	37.9	37.7	37.3	37.1	37.0	37.1							
10	37.8	37.6	37.2	36.6	36.1	36.0	37.6	37.2	36.7	36.4	36.7	37.1							
15	37.4	37.2	36.5	35.6	35.2	35.4	37.1	36.6	35.7	35.3	35.9	36.7							
20	37.0	36.5	35.4	34.2	33.9	34.6	36.6	35.8	34.4	33.8	34.8	36.1							
25	36.5	35.7	34.0	32.6	32.5	33.6	36.0	35.0	33.0	32.1	33.4	35.3							
30	35.8	34.9	32.4	30.6	30.9	32.4	35.3	33.9	31.4	30.0	31.8	34.6							
35	35.0	33.8	30.7	28.4	29.1	31.1	34.3	32.7	29.7	27.7	30.1	33.8							
40	34.0	32.6	28.8	25.9	27.2	29.8	33.2	31.3	27.8	25.2	28.3	32.8							
45	32.8	31.2	26.9	23.2	25.0	28.5	32.3	29.9	25.7	22.4	26.5	31.6							
50	31.7	29.7	24.8	20.4	22.8	27.0	31.2	28.5	23.4	19.6	24.6	30.3							
55	30.5	28.2	22.6	17.4	20.6	25.4	30.0	27.1	21.1	16.6	22.6	28.8							
60	29.2	26.7	20.4	14.4	18.4	23.9	28.6	25.5	18.9	13.6	20.5	27.4							
65	27.8	25.1	18.1	11.3	16.2	22.3	27.3	23.9	16.6	10.5	18.3	26.0							
70	26.4	23.5	16.0	8.17	14.0	20.8	26.0	22.3	14.4	7.49	16.2	24.5							
75	24.9	22.0	13.9	5.26	12.1	19.3	24.6	20.8	12.4	4.65	14.2	23.0							
80	23.5	20.4	12.1	2.62	10.5	17.9	23.1	19.4	10.7	2.17	12.3	21.6							
85	21.9	18.9	10.6	0.81	9.06	16.4	21.6	17.9	9.24	0.51	10.8	20.1							
90	20.3	17.4	9.34	0.55	7.89	15.0	20.0	16.4	8.03	0.38	9.53	18.7							
95	18.7	16.0	8.33	0.54	7.02	13.7	18.5	15.0	7.10	0.38	8.51	17.3							
100	16.8	13.3	7.55	0.60	6.41	11.5	16.6	12.6	6.44	0.43	7.46	14.5							
105	15.3	12.6	6.41	0.62	4.91	10.9	15.2	11.9	4.97	0.47	6.20	13.6							
110	13.9	11.6	6.26	0.64	4.69	10.0	13.9	10.9	4.74	0.48	5.95	12.3							
115	12.7	10.7	5.66	0.66	4.31	8.80	12.1	9.86	4.34	0.49	5.75	11.2							
120	11.6	9.95	3.79	0.69	4.03	8.03	11.2	9.05	4.14	0.51	5.19	9.19							
125	10.7	9.21	3.45	0.73	3.79	7.35	10.3	8.19	4.00	0.54	4.73	9.58							
130	9.70	8.20	3.71	0.79	3.49	6.65	9.32	7.47	3.79	0.59	4.29	8.98							
135	8.77	6.77	3.51	0.86	3.27	5.91	8.40	6.81	3.53	0.61	3.84	7.53							
140	7.84	5.42	3.23	0.95	2.93	5.25	7.30	6.11	3.25	0.63	3.38	5.83							
145	6.86	4.37	2.96	1.03	2.64	4.57	6.43	5.36	2.97	0.68	3.02	5.11							
150	5.90	3.46	2.50	1.17	2.37	3.93	5.50	4.66	2.78	0.82	2.65	4.38							
155	4.97	2.76	2.44	1.24	1.96	3.34	4.73	4.06	2.45	0.95	2.67	3.69							
160	4.08	2.40	2.45	1.29	1.56	2.71	3.96	3.52	2.07	1.10	2.69	2.95							
165	3.32	2.10	2.44	1.31	0.99	2.07	3.42	2.96	1.66	1.25	2.64	2.51							
170	1.79	2.00	2.31	1.32	0.93	1.36	1.69	2.29	1.30	1.32	2.55	2.49							
175	1.44	1.72	2.09	1.32	0.90	0.98	1.28	1.60	0.96	1.41	2.41	2.39							
180	0.92	0.92	1.03	1.29	1.47	1.35	0.93	0.91	0.90	1.43	1.45	1.35							

C Range: 0 - 360DEG  
C Interval: 30.0DEG  
Test Speed: HIGH  
Temperature:25.3DEG  
Operators:LPC  
Test Date:2021-12-10

γ Range: 0 - 180DEG  
γ Interval: 1.0DEG  
Test System:EVERFINE GO-2000B\_V1 SYSTEM V2.0.362  
Humidity:65.0%  
Test Distance:9.200m [K=1.0000]  
Remarks:

## Photometric Data Table [cd]

G/C	0.0	30.0	60.0	90.0	120.0	150.0	180.0	210.0	240.0	270.0
0.0	38.08	37.86	37.54	37.21	37.05	36.91	38.08	37.86	37.54	37.21
3.0	38.10	37.86	37.55	37.14	36.91	36.70	38.01	37.78	37.42	37.18
6.0	38.07	37.81	37.53	36.98	36.65	36.43	37.88	37.61	37.17	36.97
9.0	37.91	37.67	37.33	36.68	36.29	36.12	37.68	37.34	36.82	36.59
12.0	37.69	37.46	37.01	36.19	35.80	35.74	37.44	37.01	36.31	36.02
15.0	37.43	37.15	36.48	35.57	35.17	35.36	37.14	36.59	35.67	35.31
18.0	37.16	36.77	35.88	34.81	34.47	34.94	36.79	36.15	34.94	34.48
21.0	36.91	36.33	35.16	33.94	33.68	34.44	36.48	35.65	34.14	33.52
24.0	36.61	35.88	34.34	32.92	32.83	33.85	36.14	35.13	33.27	32.45
27.0	36.27	35.38	33.43	31.82	31.93	33.17	35.74	34.58	32.36	31.29
30.0	35.85	34.85	32.45	30.61	30.94	32.44	35.27	33.94	31.40	30.02
33.0	35.37	34.24	31.38	29.27	29.88	31.66	34.73	33.23	30.38	28.67
36.0	34.84	33.56	30.29	27.86	28.76	30.82	34.12	32.46	29.30	27.24
39.0	34.22	32.84	29.17	26.41	27.57	30.06	33.45	31.62	28.15	25.69
42.0	33.55	32.07	28.03	24.84	26.33	29.33	32.81	30.73	26.95	24.10
45.0	32.84	31.21	26.87	23.21	25.04	28.49	32.26	29.90	25.67	22.45
48.0	32.19	30.31	25.65	21.57	23.69	27.60	31.64	29.11	24.34	20.74
51.0	31.49	29.39	24.39	19.81	22.34	26.72	30.96	28.25	22.97	18.99
54.0	30.74	28.52	23.10	18.03	21.04	25.76	30.23	27.36	21.57	17.24
57.0	29.95	27.62	21.78	16.24	19.73	24.81	29.46	26.44	20.19	15.42
60.0	29.15	26.68	20.42	14.36	18.40	23.88	28.65	25.45	18.86	13.57
63.0	28.32	25.71	19.06	12.48	17.06	22.92	27.85	24.51	17.51	11.76
66.0	27.49	24.76	17.70	10.65	15.76	22.02	27.06	23.57	16.19	9.921
69.0	26.65	23.79	16.41	8.785	14.45	21.11	26.24	22.62	14.89	8.091
72.0	25.81	22.85	15.16	6.965	13.23	20.20	25.40	21.73	13.60	6.343
75.0	24.94	21.96	13.94	5.258	12.10	19.32	24.58	20.84	12.41	4.649
78.0	24.06	21.04	12.78	3.614	11.09	18.47	23.72	19.94	11.34	3.090
81.0	23.16	20.14	11.76	2.168	10.17	17.59	22.84	19.08	10.37	1.732
84.0	22.23	19.25	10.84	1.113	9.326	16.68	21.94	18.20	9.515	0.6717
87.0	21.29	18.34	10.04	0.5887	8.557	15.80	21.01	17.29	8.737	0.4074
90.0	20.29	17.43	9.340	0.5467	7.893	14.96	20.04	16.41	8.029	0.3758
93.0	19.32	16.55	8.707	0.5378	7.334	14.15	19.10	15.56	7.436	0.3811
96.0	18.36	15.68	8.154	0.5529	6.882	13.41	18.17	14.74	6.954	0.3865
99.0	17.41	14.06	7.681	0.5731	6.540	11.66	17.12	12.84	6.562	0.3918
102.0	16.17	13.11	7.239	0.6060	6.059	11.29	16.05	12.37	6.170	0.4597
105.0	15.30	12.56	6.414	0.6176	4.912	10.88	15.23	11.92	4.971	0.4672
108.0	14.46	11.98	6.353	0.6291	4.729	10.39	14.46	11.35	4.949	0.4747
111.0	13.66	11.41	6.024	0.6407	4.629	9.547	13.66	10.51	4.653	0.4823
114.0	12.92	10.88	5.659	0.6584	4.343	8.960	12.45	10.06	4.377	0.4898
117.0	12.25	10.40	5.224	0.6685	4.177	8.432	11.76	9.585	4.231	0.4974
120.0	11.64	9.955	3.790	0.6936	4.026	8.030	11.22	9.053	4.136	0.5125
123.0	11.03	9.502	3.247	0.7087	3.890	7.618	10.64	8.525	4.081	0.5276
126.0	10.47	9.055	3.622	0.7389	3.740	7.211	10.07	8.037	3.975	0.5427
129.0	9.898	8.541	3.749	0.7791	3.549	6.783	9.511	7.595	3.834	0.5628
132.0	9.320	7.582	3.619	0.8193	3.413	6.386	8.954	7.208	3.683	0.6000
135.0	8.767	6.772	3.509	0.8595	3.267	5.909	8.396	6.806	3.528	0.6108
138.0	8.214	5.783	3.353	0.9098	3.062	5.497	7.667	6.368	3.352	0.6182
141.0	7.646	5.174	3.172	0.9651	2.851	5.100	7.119	5.957	3.171	0.6332
144.0	7.058	4.552	3.016	1.010	2.674	4.688	6.592	5.480	3.015	0.6684
147.0	6.485	3.994	2.800	1.071	2.574	4.281	6.013	5.092	2.870	0.6834
150.0	5.897	3.461	2.504	1.166	2.368	3.934	5.496	4.660	2.783	0.8189
153.0	5.325	3.004	2.412	1.211	2.122	3.572	5.054	4.288	2.557	0.8993
156.0	4.806	2.668	2.462	1.246	1.856	3.205	4.587	3.966	2.371	0.9948
159.0	4.314	2.447	2.454	1.277	1.614	2.838	4.149	3.645	2.140	1.080
162.0	3.736	2.281	2.446	1.312	1.388	2.497	3.758	3.348	1.909	1.151
165.0	3.324	2.101	2.438	1.314	0.9866	2.075	3.416	2.956	1.663	1.246
168.0	1.908	2.085	2.408	1.316	0.9311	1.647	1.844	2.554	1.477	1.301
171.0	1.729	1.975	2.262	1.318	0.9253	1.114	1.627	2.152	1.179	1.335
174.0	1.529	1.774	2.157	1.320	0.9100	1.014	1.361	1.730	0.9852	1.387
177.0	1.302	1.471	1.671	1.322	0.8898	0.9147	1.166	1.373	0.9046	1.407
180.0	0.9247	0.9197	1.030	1.287	1.473	1.352	0.9348	0.9147	0.9046	1.432
G/C	300.0	330.0								
0.0	37.05	36.91								
3.0	37.04	37.03								
6.0	36.98	37.09								
9.0	36.78	37.09								
12.0	36.40	36.98								
15.0	35.91	36.74								
18.0	35.28	36.37								
21.0	34.55	35.96								
24.0	33.71	35.50								
27.0	32.79	35.03								
30.0	31.81	34.58								

C Range: 0 - 360DEG  
 C Interval: 30.0DEG  
 Test Speed: HIGH  
 Temperature: 25.3DEG  
 Operators: LPC  
 Test Date: 2021-12-10

γ Range: 0 - 180DEG  
 γ Interval: 1.0DEG  
 Test System: EVERFINE GO-2000B\_V1 SYSTEM V2.0.362  
 Humidity: 65.0%  
 Test Distance: 9.200m [K=1.0000]  
 Remarks:

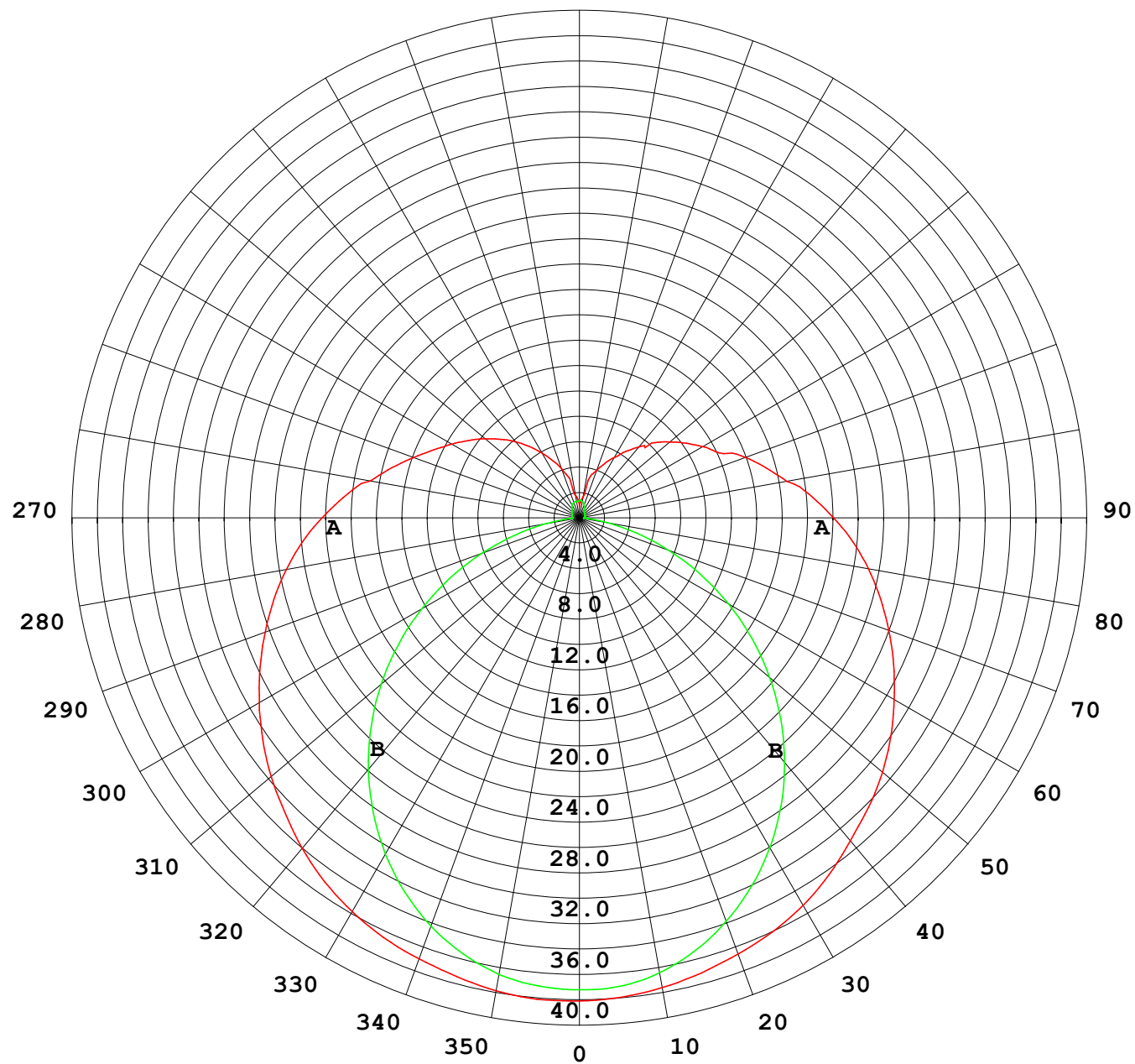
## Photometric Data Table [cd]

33.0	30.79	34.12
36.0	29.76	33.57
39.0	28.70	32.97
42.0	27.61	32.32
45.0	26.54	31.61
48.0	25.44	30.84
51.0	24.24	30.01
54.0	23.01	29.15
57.0	21.76	28.26
60.0	20.46	27.41
63.0	19.17	26.57
66.0	17.83	25.67
69.0	16.57	24.77
72.0	15.34	23.87
75.0	14.16	22.97
78.0	13.03	22.11
81.0	11.98	21.26
84.0	11.06	20.41
87.0	10.24	19.54
90.0	9.526	18.69
93.0	8.908	17.86
96.0	8.335	17.02
99.0	7.697	15.47
102.0	7.058	14.23
105.0	6.198	13.65
108.0	5.994	12.84
111.0	6.000	11.99
114.0	5.869	11.37
117.0	5.492	10.92
120.0	5.185	9.187
123.0	4.914	9.602
126.0	4.623	9.494
129.0	4.381	9.143
132.0	4.125	8.406
135.0	3.838	7.531
138.0	3.552	6.606
141.0	3.301	5.775
144.0	3.100	5.318
147.0	2.879	4.786
150.0	2.653	4.384
153.0	2.664	3.982
156.0	2.673	3.539
159.0	2.683	3.102
162.0	2.693	2.725
165.0	2.638	2.508
168.0	2.618	2.498
171.0	2.533	2.483
174.0	2.447	2.443
177.0	2.108	2.322
180.0	1.452	1.347

C Range: 0 - 360DEG  
 C Interval: 30.0DEG  
 Test Speed: HIGH  
 Temperature: 25.3DEG  
 Operators: LPC  
 Test Date: 2021-12-10

γ Range: 0 - 180DEG  
 γ Interval: 1.0DEG  
 Test System: EVERFINE GO-2000B\_V1 SYSTEM V2.0.362  
 Humidity: 65.0%  
 Test Distance: 9.200m [K=1.0000]  
 Remarks:

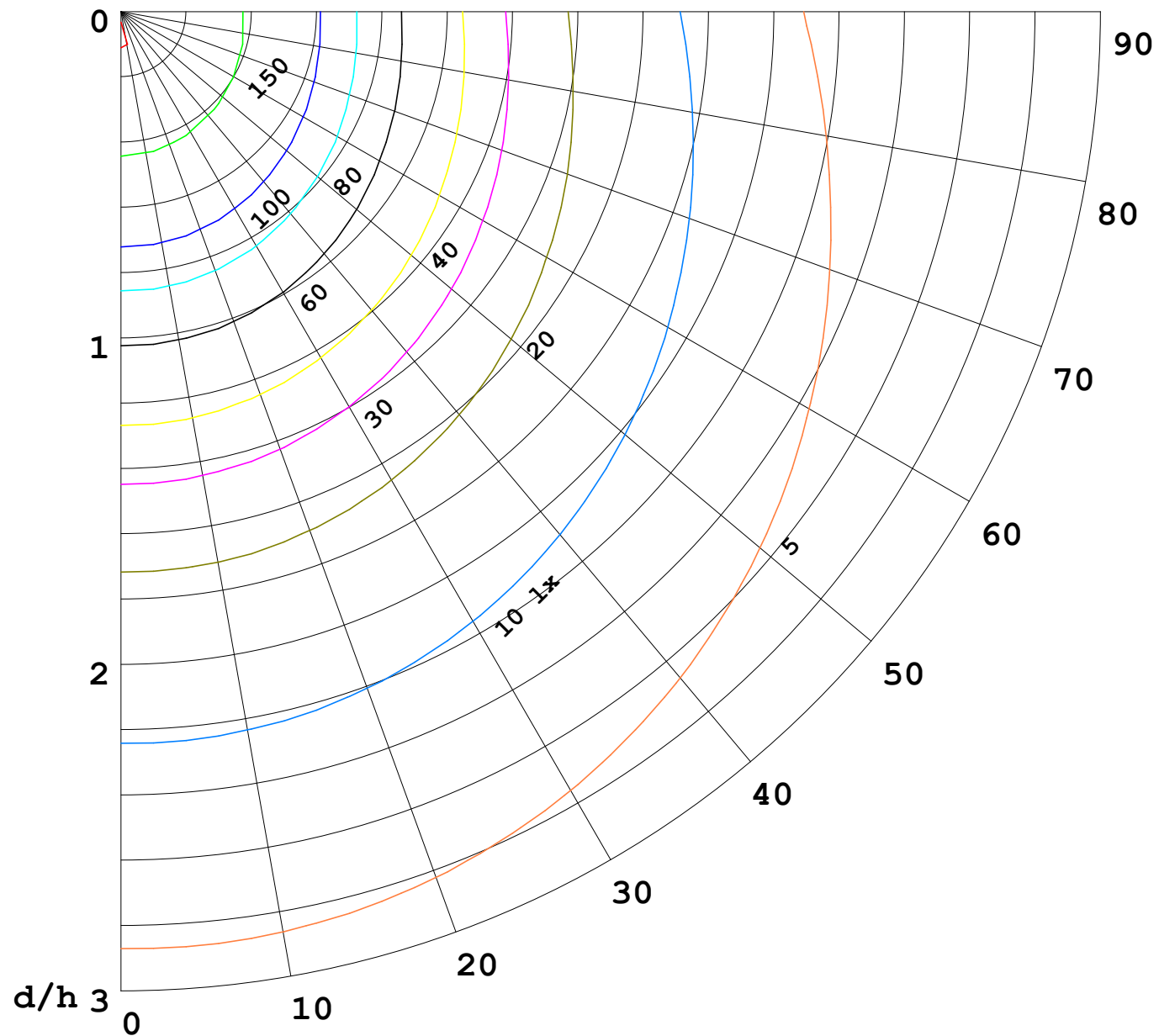
I (cd)





1000 lm

$\kappa = 1$



F = 5000 lm  
 K = 0.7  
 Hcc = 0.0 m  
 Hfc = 0.0 m  
 Eave = 100 lx

	Pcc	Pw	Pfc
—	70	50	30
—	50	30	20

