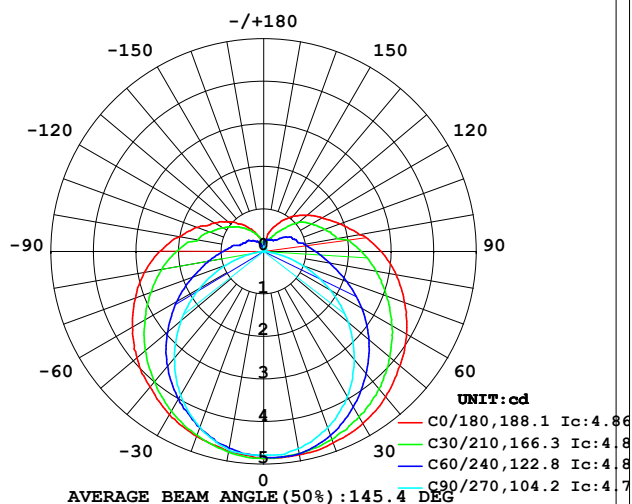


LUMINAIRE PHOTOMETRIC TEST REPORT

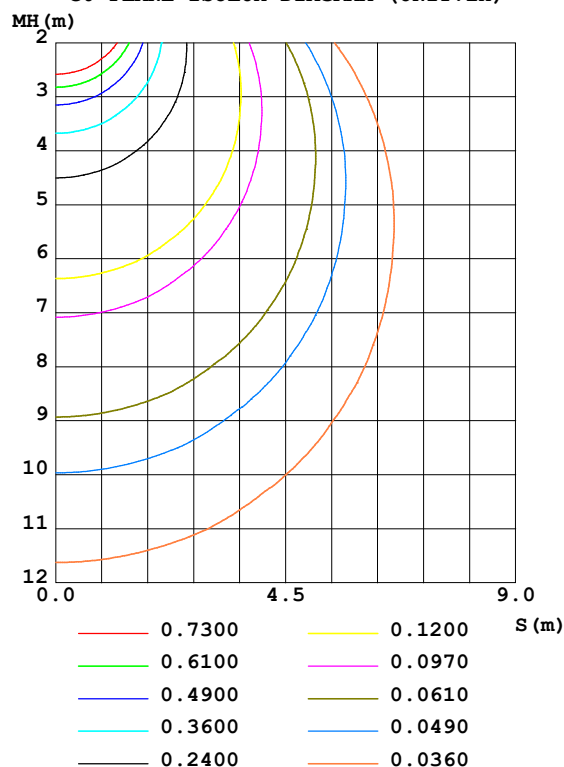
Test:U:24.00V I:0.2377A P:5.705W PF:1.000 Freq:50.00Hz Lamp Flux:23.814lx1 lm		
NAME: SF21-24V-5050-72-RGB-B	TYPE: 硅胶	WEIGHT:
SPEC.:	DIM.: 28mm*11.5mm	SERIAL No.:2021121003
MFR.: OLYMPIA	SUR.:1*0.016	Shielding Angle:

DATA OF LAMP		PHOTOMETRIC DATA				Eff: 4.17 lm/W
MODEL	5050	I _{max} (cd)	4.870	S/MH (C0/180)	1.36	
NOMINAL POWER (W)	5	LOR (%)	100.0	S/MH (C90/270)	1.22	
RATED VOLTAGE (V)	24	TOTAL FLUX (lm)	23.814	η UP, DN (C0-180)	11.1, 39.1	
NOMINAL FLUX (lm)	23.8141	CIE CLASS	SEMI-D.	η UP, DN (C180-360)	10.9, 38.9	
LAMPS INSIDE	1	η up (%)	22.0	CIBSE SHR NOM	1.50	
TEST VOLTAGE (V)	24	η down (%)	78.0	CIBSE SHR MAX	1.55	

LUMINOUS INTENSITY DISTRIBUTION DIAGRAM



C0 PLANE ISOLUX DIAGRAM (UNIT: lx)



C Range: 0 - 360DEG
C Interval: 30.0DEG
Test Speed: HIGH
Temperature: 25.3DEG
Operators: LPC
Test Date: 2021-12-10

γ Range: 0 - 180DEG
γ Interval: 1.0DEG
Test System: EVERFINE GO-2000B_V1 SYSTEM V2.0.362
Humidity: 65.0%
Test Distance: 9.200m [K=1.0000]
Remarks:

ZONAL FLUX DIAGRAM

ZONAL FLUX DIAGRAM:

γ	C0	C45	C90	C135	C180	C225	C270	C315	γ	Φ zone	Φ total	%lum, lamp
10	4.853	4.827	4.704	4.682	4.779	4.742	4.734	4.760	0- 10	0.4572	0.4572	1.92,1.92
20	4.790	4.649	4.402	4.445	4.619	4.496	4.393	4.609	10- 20	1.319	1.776	7.46,7.46
30	4.669	4.352	3.935	4.111	4.432	4.169	3.901	4.314	20- 30	2.033	3.809	16,16
40	4.463	3.983	3.316	3.687	4.156	3.754	3.267	3.980	30- 40	2.534	6.344	26.6,26.6
50	4.182	3.553	2.603	3.214	3.895	3.294	2.534	3.576	40- 50	2.790	9.134	38.4,38.4
60	3.880	3.073	1.803	2.714	3.563	2.797	1.745	3.113	50- 60	2.795	11.93	50.1,50.1
70	3.528	2.578	0.9894	2.224	3.206	2.299	0.9455	2.638	60- 70	2.582	14.51	60.9,60.9
80	3.162	2.138	0.2608	1.814	2.849	1.877	0.2367	2.204	70- 80	2.225	16.74	70.3,70.3
90	2.765	1.759	0.0251	1.447	2.447	1.503	0	1.827	80- 90	1.841	18.58	78,78
100	2.293	1.362	0.0402	1.121	2.000	1.168	0	1.428	90-100	1.510	20.09	84.3,84.3
110	1.910	1.168	0.0402	0.9094	1.663	0.9449	0	1.202	100-110	1.165	21.25	89.2,89.2
120	1.588	0.9976	0.0452	0.7363	1.337	0.7916	0	0.9703	110-120	0.9021	22.15	93,93
130	1.327	0.7688	0.0553	0.6030	1.090	0.6508	0	0.8468	120-130	0.6829	22.84	95.9,95.9
140	1.081	0.5125	0.0754	0.4799	0.8391	0.5227	0.0201	0.5555	130-140	0.4628	23.30	97.8,97.8
150	0.8194	0.3593	0.0754	0.3493	0.6031	0.4071	0.0402	0.4271	140-150	0.2833	23.58	99,99
160	0.5631	0.2883	0.0754	0.2086	0.3918	0.2714	0.0502	0.3226	150-160	0.1532	23.74	99.7,99.7
170	0.2211	0.2367	0.0754	0.0704	0.1205	0.1433	0.0704	0.2839	160-170	0.0638	23.80	99.9,99.9
180	0.0754	0.0804	0.0754	0.1231	0.0503	0.0678	0.1307	0.1256	170-180	0.0138	23.81	100,100
DEG	LUMINOUS INTENSITY:cd									UNIT:lm		

Conical surface Flux(90deg): 7.7225 lm

%lum = 32.4%

%lamp = 32.4%

Conical surface Flux(120deg): 11.929 lm

%lum = 50.1%

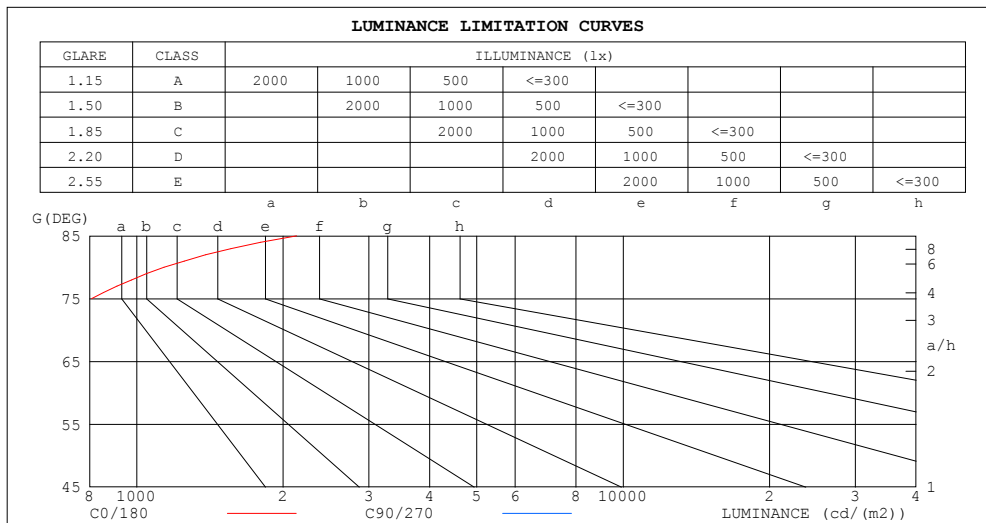
%lamp = 50.1%

C Range: 0 - 360DEG
 C Interval: 30.0DEG
 Test Speed: HIGH
 Temperature:25.3DEG
 Operators:LPC
 Test Date:2021-12-10

γ Range: 0 - 180DEG
 γ Interval: 1.0DEG
 Test System:EVERFINE GO-2000B_V1 SYSTEM V2.0.362
 Humidity:65.0%
 Test Distance:9.200m [K=1.0000]
 Remarks:

LUMINANCE LIMITATION CURVES

Test:U:24.00V I:0.2377A P:5.705W PF:1.000 Freq:50.00Hz Lamp Flux:23.8141x1 lm		
NAME: SF21-24V-5050-72-RGB-B	TYPE: 硅胶	WEIGHT:
SPEC.:	DIM.: 28mm*11.5mm	SERIAL No.:2021121003
MFR.: OLYMPIA	SUR.:1*0.016	Shielding Angle:



LUMINANCE cd/(m2)		
G (DEG)	C0/180	C90/270
85	2130	22
80	1138	94
75	808	147
70	645	181
65	548	207
60	485	225
55	440	241
50	407	253
45	382	262

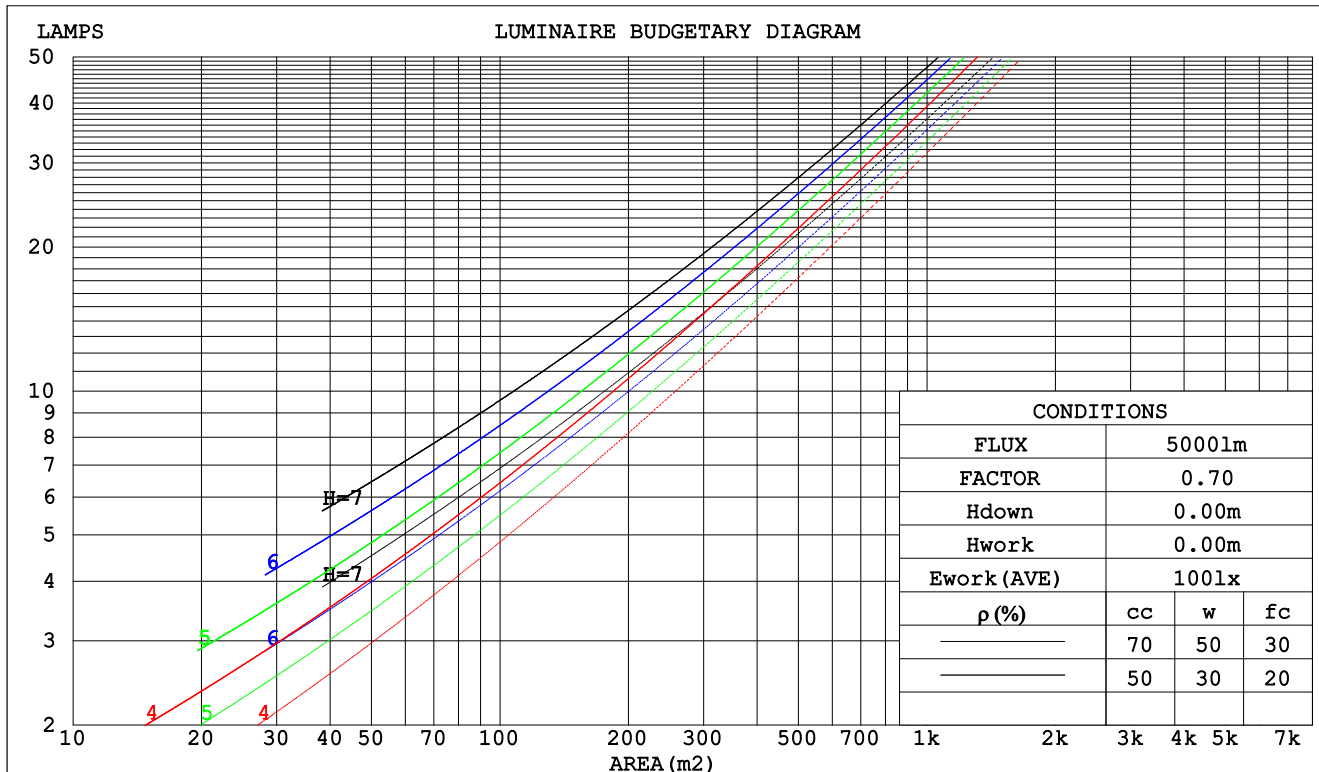
C Range: 0 - 360DEG
C Interval: 30.0DEG
Test Speed: HIGH
Temperature:25.3DEG
Operators:LPC
Test Date:2021-12-10

γ Range: 0 - 180DEG
 γ Interval: 1.0DEG
Test System:EVERFINE GO-2000B_V1 SYSTEM V2.0.362
Humidity:65.0%
Test Distance:9.200m [K=1.0000]
Remarks:

CU AND LUMINAIRE BUDGETARY ESTIMATE DIAGRAM

Test:U:24.00V I:0.2377A P:5.705W PF:1.000 Freq:50.00Hz Lamp Flux:23.814lx1 lm		
NAME: SF21-24V-5050-72-RGB-B	TYPE: 硅胶	WEIGHT:
SPEC.:	DIM.: 28mm*11.5mm	SERIAL No.:2021121003
MFR.: OLYMPIA	SUR.:1*0.016	Shielding Angle:

pcc	80%			70%			50%			30%			10%			0
pw	50%	30%	10%	50%	30%	10%	50%	30%	10%	50%	30%	10%	50%	30%	10%	0
pfc	20%			20%			20%			20%			20%			0
RCR	RCR:Room Cavity Ratio						Coefficients of Utilization(CU)									
0.0	1.14	1.14	1.14	1.09	1.09	1.09	.99	.99	.99	.90	.90	.90	.82	.82	.82	.78
1.0	.95	.89	.84	.90	.85	.81	.82	.78	.74	.74	.71	.68	.67	.65	.62	.59
2.0	.81	.73	.66	.77	.70	.64	.70	.64	.59	.63	.58	.54	.57	.53	.50	.46
3.0	.70	.61	.54	.67	.59	.52	.61	.54	.48	.55	.49	.45	.50	.45	.41	.38
4.0	.61	.52	.45	.59	.50	.43	.53	.46	.40	.48	.42	.37	.44	.39	.35	.32
5.0	.55	.45	.38	.52	.43	.37	.47	.40	.34	.43	.37	.32	.39	.34	.30	.27
6.0	.49	.39	.33	.47	.38	.32	.43	.35	.30	.39	.33	.28	.35	.30	.26	.23
7.0	.44	.35	.29	.42	.34	.28	.39	.31	.26	.35	.29	.24	.32	.27	.23	.20
8.0	.40	.31	.25	.38	.30	.25	.35	.28	.23	.32	.26	.22	.29	.24	.20	.18
9.0	.36	.28	.23	.35	.27	.22	.32	.25	.21	.30	.24	.19	.27	.22	.18	.16
10.0	.34	.26	.20	.32	.25	.20	.30	.23	.19	.27	.22	.17	.25	.20	.16	.14



C Range: 0 - 360DEG
 C Interval: 30.0DEG
 Test Speed: HIGH
 Temperature:25.3DEG
 Operators:LPC
 Test Date:2021-12-10

γ Range: 0 - 180DEG
 γ Interval: 1.0DEG
 Test System:EVERFINE GO-2000B_V1 SYSTEM V2.0.362
 Humidity:65.0%
 Test Distance:9.200m [K=1.0000]
 Remarks:

WEC AND CCEC

Test:U:24.00V I:0.2377A P:5.705W PF:1.000 Freq:50.00Hz Lamp Flux:23.8141x1 lm		
NAME: SF21-24V-5050-72-RGB-B	TYPE: 硅胶	WEIGHT:
SPEC.:	DIM.: 28mm*11.5mm	SERIAL No.:2021121003
MFR.: OLYMPIA	SUR.:1*0.016	Shielding Angle:

pcc	80%			70%			50%			30%			10%			0	
pw	50%	30%	10%	50%	30%	10%	50%	30%	10%	50%	30%	10%	50%	30%	10%	0	
pfc	20%			20%			20%			20%			20%			0	
RCR	RCR:Room Cavity Ratio						Wall Exitance Coefficients(WEC)										
0.0																	
1.0	.387	.220	.070	.373	.213	.068	.347	.199	.064	.323	.186	.060	.301	.174	.056		
2.0	.333	.183	.056	.321	.177	.054	.297	.165	.051	.275	.154	.048	.255	.144	.046		
3.0	.295	.157	.047	.284	.152	.046	.263	.142	.043	.243	.133	.041	.224	.124	.038		
4.0	.266	.138	.041	.255	.134	.039	.236	.125	.037	.218	.117	.035	.201	.109	.033		
5.0	.241	.123	.036	.232	.119	.035	.214	.112	.033	.198	.104	.031	.182	.097	.029		
6.0	.221	.111	.032	.212	.107	.031	.196	.101	.029	.181	.094	.028	.167	.088	.026		
7.0	.204	.101	.029	.196	.098	.028	.181	.092	.026	.167	.086	.025	.154	.080	.024		
8.0	.189	.092	.026	.182	.089	.025	.168	.084	.024	.155	.079	.023	.143	.073	.021		
9.0	.176	.085	.024	.169	.083	.023	.157	.078	.022	.145	.073	.021	.134	.068	.020		
10.0	.165	.079	.022	.159	.077	.021	.147	.072	.020	.136	.067	.019	.125	.063	.018		

pcc	80%			70%			50%			30%			10%			0
pw	50%	30%	10%	50%	30%	10%	50%	30%	10%	50%	30%	10%	50%	30%	10%	0
pfc	20%			20%			20%			20%			20%			0
RCR	RCR:Room Cavity Ratio						Ceiling Cavity Exitance Coefficients(CCEC)									
0.0	.358	.358	.358	.306	.306	.306	.209	.209	.209	.120	.120	.120	.038	.038	.038	
1.0	.355	.324	.297	.303	.278	.256	.208	.192	.177	.119	.111	.103	.038	.036	.033	
2.0	.348	.302	.263	.298	.260	.227	.204	.180	.159	.118	.105	.093	.038	.034	.030	
3.0	.340	.285	.242	.292	.246	.210	.200	.171	.147	.116	.100	.087	.037	.032	.028	
4.0	.333	.273	.228	.285	.236	.198	.196	.164	.139	.114	.096	.082	.037	.031	.027	
5.0	.325	.263	.218	.279	.228	.190	.192	.159	.134	.111	.093	.079	.036	.030	.026	
6.0	.318	.255	.211	.273	.221	.184	.188	.155	.130	.109	.091	.077	.035	.030	.026	
7.0	.311	.249	.206	.267	.216	.179	.185	.151	.127	.107	.089	.076	.035	.029	.025	
8.0	.304	.243	.202	.262	.211	.176	.181	.148	.125	.105	.087	.074	.034	.029	.025	
9.0	.298	.239	.199	.256	.207	.173	.178	.146	.123	.103	.086	.073	.034	.028	.024	
10.0	.292	.235	.196	.252	.204	.171	.175	.143	.122	.102	.085	.073	.033	.028	.024	

C Range: 0 - 360DEG
C Interval: 30.0DEG
Test Speed: HIGH
Temperature:25.3DEG
Operators:LPC
Test Date:2021-12-10

γ Range: 0 - 180DEG
γ Interval: 1.0DEG
Test System:EVERFINE GO-2000B_V1 SYSTEM V2.0.362
Humidity:65.0%
Test Distance:9.200m [K=1.0000]
Remarks:

UGR(Unified Glare Rating) Table

Test:U:24.00V I:0.2377A P:5.705W PF:1.000 Freq:50.00Hz Lamp Flux:23.8141x1 lm										
NAME: SF21-24V-5050-72-RGB-B					TYPE: 硅胶			WEIGHT:		
SPEC.:					DIM.: 28mm*11.5mm			SERIAL No.:2021121003		
MFR.: OLYMPIA					SUR.:1*0.016			Shielding Angle:		
ceiling/cavity	0.7	0.7	0.5	0.5	0.3	0.7	0.7	0.5	0.5	0.3
walls	0.5	0.3	0.5	0.3	0.3	0.5	0.3	0.5	0.3	0.3
working plane	0.2	0.2	0.2	0.2	0.2	0.2	0.2	0.2	0.2	0.2
Room dimensions	Viewed crosswise					Viewed endwise				
x = 2H y = 2H	22.2	23.6	22.8	24.1	24.8	19.6	20.9	20.1	21.4	22.1
3H	25.1	26.3	25.7	26.9	27.6	20.9	22.2	21.5	22.8	23.4
4H	26.7	27.8	27.3	28.4	29.1	21.4	22.6	22.0	23.2	23.9
6H	28.4	29.5	29.1	30.2	30.9	21.7	22.8	22.3	23.4	24.2
8H	29.4	30.5	30.1	31.1	31.9	21.8	22.8	22.4	23.4	24.2
12H	30.6	31.6	31.2	32.2	33.0	21.7	22.8	22.4	23.4	24.2
4H 2H	22.8	23.9	23.4	24.6	25.3	20.9	22.0	21.5	22.7	23.4
3H	25.9	26.9	26.5	27.5	28.3	22.6	23.6	23.3	24.3	25.0
4H	27.7	28.6	28.3	29.3	30.0	23.4	24.3	24.1	25.0	25.8
6H	29.6	30.5	30.3	31.2	32.0	23.9	24.8	24.6	25.5	26.3
8H	30.8	31.5	31.5	32.3	33.1	24.1	24.9	24.8	25.6	26.4
12H	32.0	32.8	32.8	33.5	34.3	24.2	24.9	24.9	25.6	26.5
8H 4H	28.0	28.8	28.7	29.5	30.3	24.7	25.5	25.4	26.2	27.0
6H	30.3	31.0	31.0	31.7	32.6	25.7	26.4	26.5	27.1	28.0
8H	31.6	32.2	32.4	33.0	33.9	26.2	26.8	26.9	27.5	28.4
12H	33.2	33.7	33.9	34.5	35.4	26.5	27.1	27.3	27.8	28.7
12H 4H	28.0	28.7	28.7	29.5	30.3	25.1	25.9	25.9	26.6	27.4
6H	30.4	31.0	31.2	31.8	32.7	26.5	27.1	27.2	27.8	28.7
8H	31.9	32.4	32.6	33.1	34.1	27.1	27.7	27.9	28.4	29.3
Variations with the observer position at spacings:										
S = 1.0H	+ 0.1 / - 0.1					+ 0.1 / - 0.1				
1.5H	+ 0.2 / - 0.3					+ 0.2 / - 0.3				
2.0H	+ 0.3 / - 0.3					+ 0.3 / - 0.4				

CIE Pub.117, 23.81 lm Total Lamp Luminous Flux Correct (8log(F/F0) = -13.0)

C Range: 0 - 360DEG
 C Interval: 30.0DEG
 Test Speed: HIGH
 Temperature:25.3DEG
 Operators:LPC
 Test Date:2021-12-10

γ Range: 0 - 180DEG
 γ Interval: 1.0DEG
 Test System:EVERFINE GO-2000B_V1 SYSTEM V2.0.362
 Humidity:65.0%
 Test Distance:9.200m [K=1.0000]
 Remarks:

UTILIZATION FACTORS TABLE

Test:U:24.00V I:0.2377A P:5.705W PF:1.000 Freq:50.00Hz Lamp Flux:23.814lx1 lm		
NAME: SF21-24V-5050-72-RGB-B	TYPE: 硅胶	WEIGHT:
SPEC.:	DIM.: 28mm*11.5mm	SERIAL No.:2021121003
MFR.: OLYMPIA	SUR.:1*0.016	Shielding Angle:

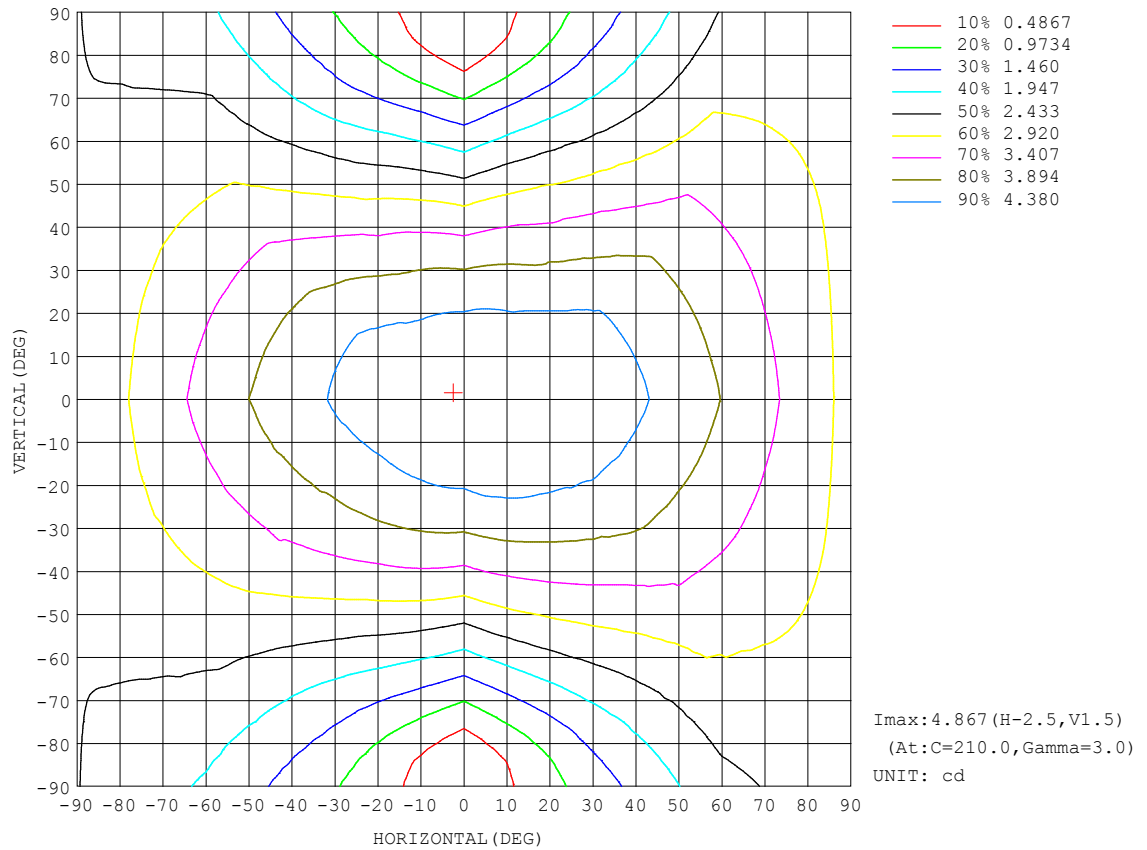
REFLECTANCE										
Ceiling	0.8	0.8	0.8	0.7	0.7	0.7	0.5	0.5	0.5	0
Walls	0.7	0.5	0.3	0.7	0.5	0.3	0.7	0.5	0.3	0
Working plane	0.2	0.2	0.2	0.2	0.2	0.2	0.2	0.2	0.2	0
ROOM INDEX	UTILIZATION FACTORS (PERCENT) $k(RI) \times RCR = 5$									
$k = 0.60$	46	34	27	45	34	27	43	32	26	19
0.80	56	42	34	54	42	34	51	40	33	25
1.00	63	50	42	61	49	41	57	49	40	31
1.25	70	57	49	68	56	48	63	53	46	36
1.50	75	63	54	72	61	53	67	58	51	39
2.00	82	71	63	79	69	61	73	65	58	46
2.50	87	77	68	83	74	67	77	69	63	49
3.00	91	81	74	87	78	71	80	73	67	53
4.00	96	87	81	91	84	78	84	78	73	57
5.00	99	91	85	94	88	82	86	81	76	60
ROOM INDEX	UF (total)									Direct
According to DIN EN 13032-2 2004			Suspended					SHRNOM = 1.25		

C Range: 0 - 360DEG
C Interval: 30.0DEG
Test Speed: HIGH
Temperature:25.3DEG
Operators:LPC
Test Date:2021-12-10

γ Range: 0 - 180DEG
 γ Interval: 1.0DEG
Test System:EVERFINE GO-2000B_V1 SYSTEM V2.0.362
Humidity:65.0%
Test Distance:9.200m [K=1.0000]
Remarks:

ISOCANDELA DIAGRAM

Test:U:24.00V I:0.2377A P:5.705W PF:1.000 Freq:50.00Hz Lamp Flux:23.8141x1 lm		
NAME: SF21-24V-5050-72-RGB-B	TYPE: 硅胶	WEIGHT:
SPEC.:	DIM.: 28mm*11.5mm	SERIAL No.:2021121003
MFR.: OLYMPIA	SUR.:1*0.016	Shielding Angle:

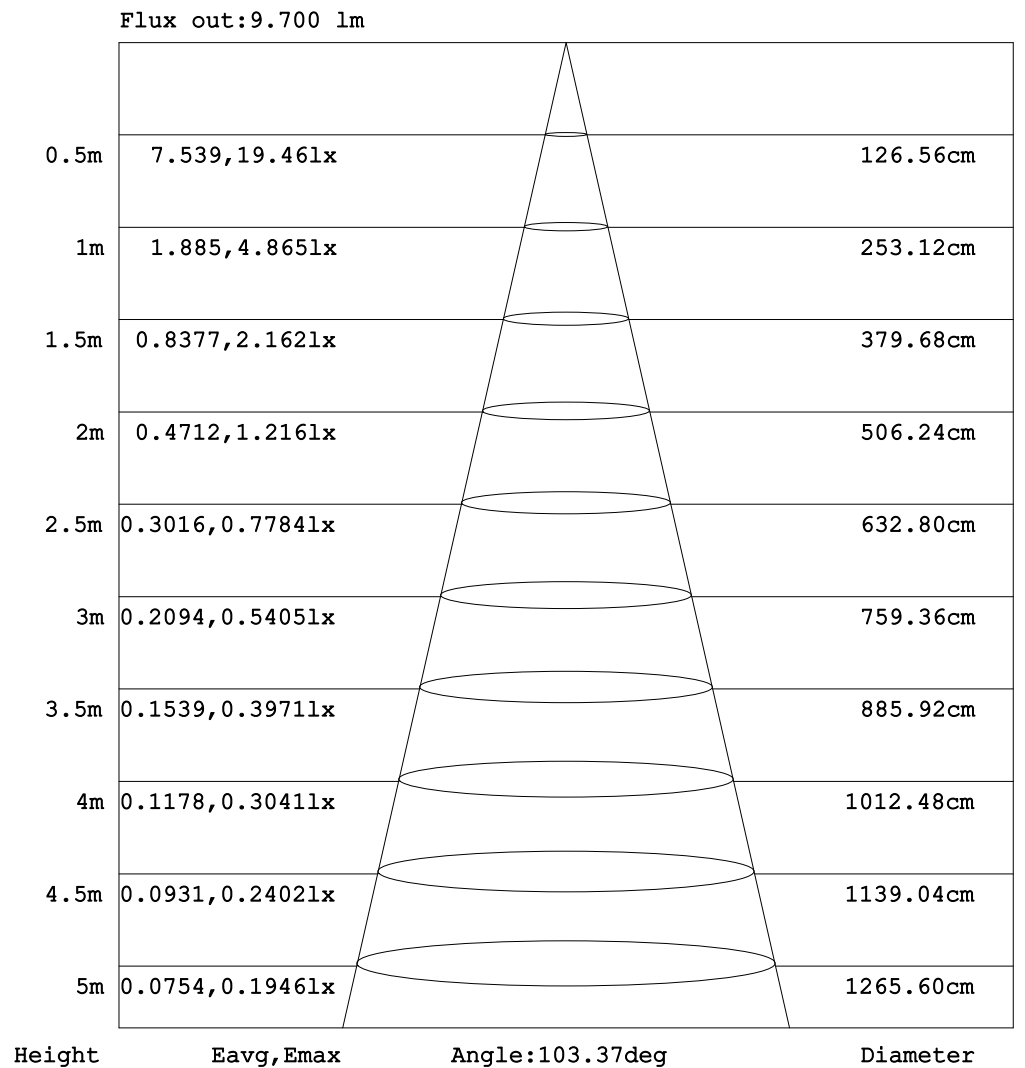


C Range: 0 - 360DEG
C Interval: 30.0DEG
Test Speed: HIGH
Temperature: 25.3DEG
Operators: LPC
Test Date: 2021-12-10

γ Range: 0 - 180DEG
 γ Interval: 1.0DEG
Test System: EVERFINE GO-2000B_V1 SYSTEM V2.0.362
Humidity: 65.0%
Test Distance: 9.200m [K=1.0000]
Remarks:

AAI Figure

Test:U:24.00V I:0.2377A P:5.705W PF:1.000 Freq:50.00Hz Lamp Flux:23.814lx1 lm		
NAME: SF21-24V-5050-72-RGB-B	TYPE: 硅胶	WEIGHT:
SPEC.:	DIM.: 28mm*11.5mm	SERIAL No.:2021121003
MFR.: OLYMPIA	SUR.:1*0.016	Shielding Angle:



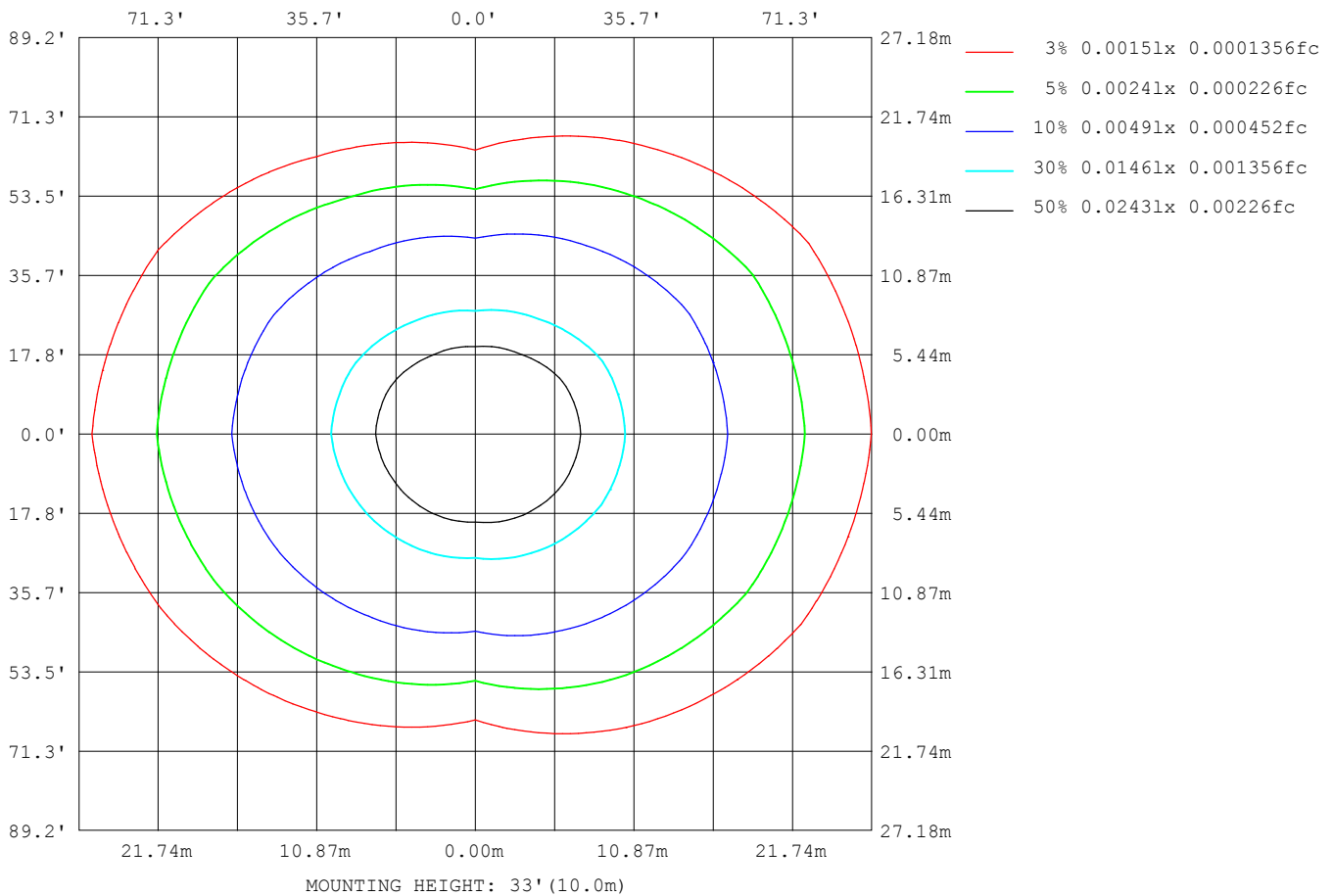
Note: The Curves indicate the illuminated area and the average illumination when the luminaire is at different distance.

C Range: 0 - 360DEG
 C Interval: 30.0DEG
 Test Speed: HIGH
 Temperature: 25.3DEG
 Operators: LPC
 Test Date: 2021-12-10

γ Range: 0 - 180DEG
 γ Interval: 1.0DEG
 Test System: EVERFINE GO-2000B_V1 SYSTEM V2.0.362
 Humidity: 65.0%
 Test Distance: 9.200m [K=1.0000]
 Remarks:

ISOLUX DIAGRAM

Test:U:24.00V I:0.2377A P:5.705W PF:1.000 Freq:50.00Hz Lamp Flux:23.814lx1 lm		
NAME: SF21-24V-5050-72-RGB-B	TYPE: 硅胶	WEIGHT:
SPEC.:	DIM.: 28mm*11.5mm	SERIAL No.:2021121003
MFR.: OLYMPIA	SUR.:1*0.016	Shielding Angle:



C Range: 0 - 360DEG
C Interval: 30.0DEG
Test Speed: HIGH
Temperature:25.3DEG
Operators:LPC
Test Date:2021-12-10

γ Range: 0 - 180DEG
 γ Interval: 1.0DEG
Test System:EVERFINE GO-2000B_V1 SYSTEM V2.0.362
Humidity:65.0%
Test Distance:9.200m [K=1.0000]
Remarks:

LED Avg.L Report

Test:U:24.00V I:0.2377A P:5.705W PF:1.000 Freq:50.00Hz Lamp Flux:23.8141x1 lm		
NAME: SF21-24V-5050-72-RGB-B	TYPE:硅胶	WEIGHT:
SPEC.:	DIM.: 28mm*11.5mm	SERIAL No.:2021121003
MFR.: OLYMPIA	SUR.:1*0.016	Shielding Angle:

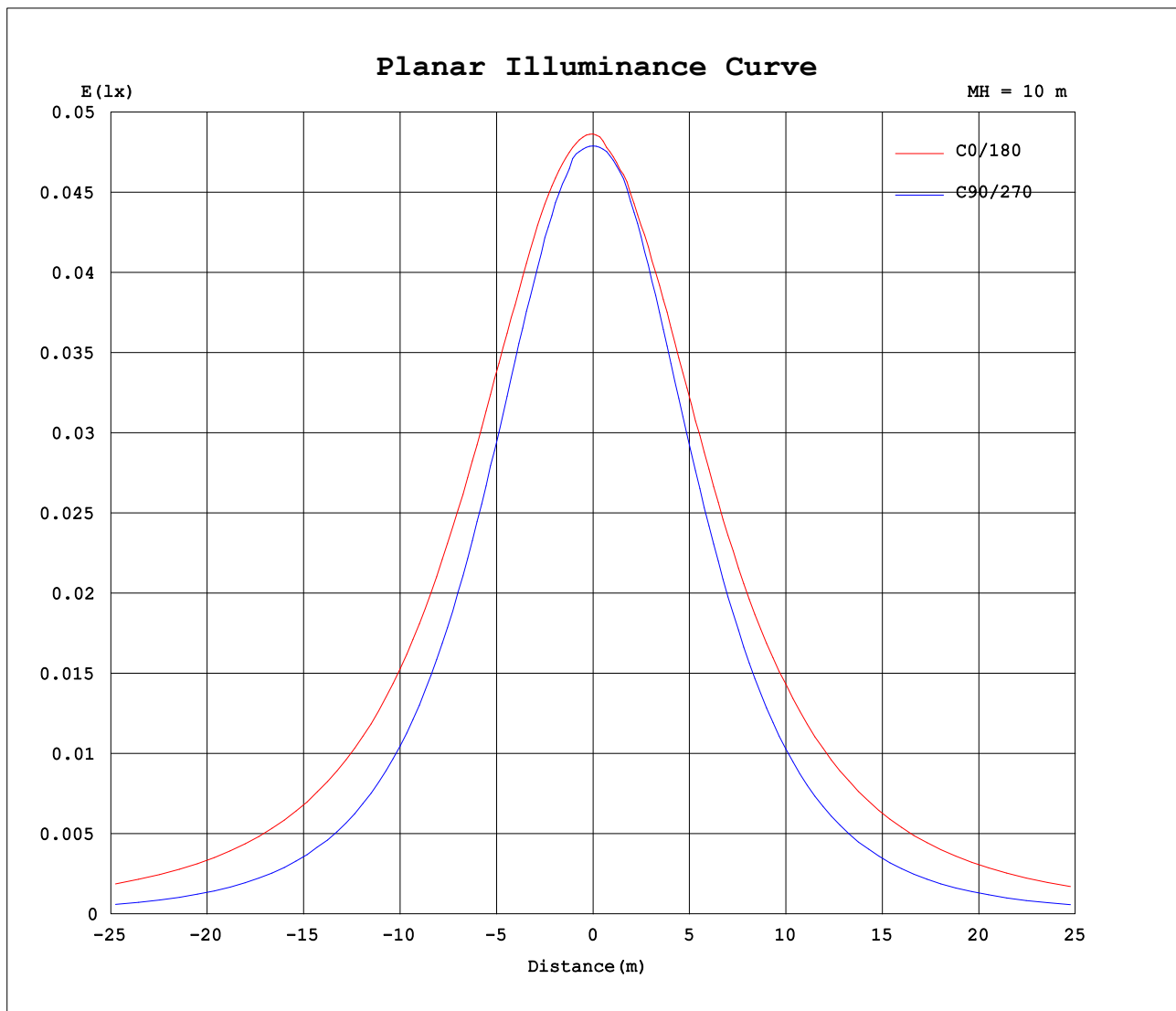
AvgL	cd/m2
L_0~180 (65) av	524
L_0~180 (75) av	771
L_0~180 (85) av	2015
L_90~270 (65) av	203
L_90~270 (75) av	141
L_90~270 (85) av	20
L_45 (65) av	400
L_45 (75) av	543
L_45 (85) av	1331

Standard: GB/T 29293-2012

C Range: 0 - 360DEG
C Interval: 30.0DEG
Test Speed: HIGH
Temperature:25.3DEG
Operators:LPC
Test Date:2021-12-10

γ Range: 0 - 180DEG
γ Interval: 1.0DEG
Test System:EVERFINE GO-2000B_V1 SYSTEM V2.0.362
Humidity:65.0%
Test Distance:9.200m [K=1.0000]
Remarks:

Planar Illuminance Curve



C Range: 0 - 360DEG
C Interval: 30.0DEG
Test Speed: HIGH
Temperature: 25.3DEG
Operators: LPC
Test Date: 2021-12-10

γ Range: 0 - 180DEG
 γ Interval: 1.0DEG
Test System: EVERFINE GO-2000B_V1 SYSTEM V2.0.362
Humidity: 65.0%
Test Distance: 9.200m [K=1.0000]
Remarks:

LUMINOUS DISTRIBUTION INTENSITY DATA

Test:U:24.00V I:0.2377A P:5.705W PF:1.000 Freq:50.00Hz Lamp Flux:23.8141x1 lm		
NAME: SF21-24V-5050-72-RGB-B	TYPE: 硅胶	WEIGHT:
SPEC.:	DIM.: 28mm*11.5mm	SERIAL No.:2021121003
MFR.: OLYMPIA	SUR.:1*0.016	Shielding Angle:

Table--1

UNIT: cd

C (DEG) γ (DEG)	0	30	60	90	120	150	180	210	240	270	300	330						
0	4.86	4.86	4.83	4.79	4.79	4.78	4.86	4.86	4.83	4.79	4.79	4.78						
5	4.86	4.85	4.85	4.79	4.79	4.72	4.81	4.85	4.77	4.78	4.78	4.80						
10	4.85	4.82	4.83	4.70	4.71	4.65	4.78	4.79	4.69	4.73	4.73	4.79						
15	4.84	4.77	4.73	4.57	4.58	4.56	4.70	4.69	4.56	4.58	4.63	4.77						
20	4.79	4.70	4.60	4.40	4.42	4.47	4.62	4.59	4.40	4.39	4.49	4.72						
25	4.74	4.61	4.42	4.19	4.24	4.34	4.53	4.48	4.21	4.17	4.31	4.63						
30	4.67	4.49	4.22	3.93	4.04	4.19	4.43	4.34	4.00	3.90	4.10	4.53						
35	4.58	4.37	3.99	3.65	3.79	4.01	4.30	4.17	3.77	3.60	3.89	4.43						
40	4.46	4.22	3.75	3.32	3.53	3.84	4.16	3.99	3.52	3.27	3.66	4.30						
45	4.33	4.06	3.49	2.96	3.26	3.66	4.06	3.82	3.25	2.91	3.41	4.16						
50	4.18	3.87	3.23	2.60	2.96	3.47	3.89	3.63	2.95	2.53	3.17	3.99						
55	4.04	3.67	2.95	2.22	2.66	3.26	3.73	3.44	2.65	2.15	2.90	3.80						
60	3.88	3.49	2.66	1.80	2.38	3.05	3.56	3.23	2.37	1.74	2.62	3.61						
65	3.70	3.28	2.36	1.40	2.08	2.85	3.39	3.02	2.07	1.34	2.33	3.42						
70	3.53	3.08	2.08	0.99	1.79	2.65	3.21	2.82	1.78	0.95	2.05	3.23						
75	3.35	2.87	1.81	0.61	1.56	2.46	3.04	2.62	1.52	0.56	1.79	3.03						
80	3.16	2.69	1.58	0.26	1.35	2.28	2.85	2.43	1.32	0.24	1.56	2.84						
85	2.97	2.49	1.38	0.03	1.16	2.07	2.65	2.24	1.12	0.03	1.35	2.66						
90	2.76	2.30	1.22	0.03	1.01	1.88	2.45	2.05	0.95	0.00	1.19	2.47						
95	2.55	2.11	1.09	0.03	0.89	1.72	2.24	1.87	0.84	0.00	1.07	2.29						
100	2.29	1.75	0.97	0.04	0.81	1.43	2.00	1.58	0.76	0.00	0.93	1.92						
105	2.09	1.65	0.83	0.04	0.61	1.36	1.83	1.49	0.57	0.00	0.78	1.81						
110	1.91	1.52	0.81	0.04	0.58	1.24	1.66	1.36	0.53	0.00	0.75	1.65						
115	1.73	1.41	0.74	0.04	0.53	1.08	1.46	1.23	0.48	0.00	0.69	1.40						
120	1.59	1.31	0.69	0.05	0.49	0.98	1.34	1.12	0.47	0.00	0.62	1.32						
125	1.46	1.20	0.58	0.05	0.46	0.88	1.23	1.01	0.45	0.00	0.54	1.29						
130	1.33	1.07	0.47	0.06	0.42	0.79	1.09	0.90	0.40	0.00	0.51	1.18						
135	1.21	0.86	0.38	0.06	0.39	0.68	0.97	0.82	0.36	0.00	0.44	0.97						
140	1.08	0.68	0.34	0.08	0.35	0.61	0.84	0.72	0.32	0.02	0.37	0.74						
145	0.95	0.54	0.34	0.08	0.31	0.52	0.73	0.63	0.29	0.05	0.32	0.66						
150	0.82	0.40	0.32	0.08	0.27	0.43	0.60	0.54	0.27	0.04	0.30	0.55						
155	0.68	0.31	0.31	0.08	0.22	0.35	0.52	0.46	0.21	0.04	0.29	0.46						
160	0.56	0.27	0.30	0.08	0.15	0.27	0.39	0.39	0.15	0.05	0.29	0.36						
165	0.44	0.21	0.30	0.08	0.08	0.19	0.32	0.32	0.12	0.06	0.28	0.30						
170	0.22	0.20	0.27	0.08	0.07	0.07	0.12	0.22	0.07	0.07	0.28	0.29						
175	0.17	0.18	0.25	0.08	0.07	0.08	0.07	0.12	0.07	0.08	0.22	0.28						
180	0.08	0.07	0.09	0.08	0.13	0.12	0.05	0.07	0.07	0.13	0.12	0.14						

C Range: 0 - 360DEG
C Interval: 30.0DEG
Test Speed: HIGH
Temperature:25.3DEG
Operators:LPC
Test Date:2021-12-10

γ Range: 0 - 180DEG
γ Interval: 1.0DEG
Test System:EVERFINE GO-2000B_V1 SYSTEM V2.0.362
Humidity:65.0%
Test Distance:9.200m [K=1.0000]
Remarks:

Photometric Data Table [cd]

G/C	0.0	30.0	60.0	90.0	120.0	150.0	180.0	210.0	240.0	270.0
0.0	4.865	4.865	4.829	4.790	4.790	4.780	4.865	4.865	4.829	4.790
3.0	4.865	4.865	4.850	4.790	4.795	4.749	4.839	4.870	4.789	4.790
6.0	4.860	4.844	4.847	4.789	4.780	4.709	4.800	4.835	4.774	4.778
9.0	4.855	4.830	4.835	4.724	4.729	4.674	4.784	4.805	4.709	4.760
12.0	4.850	4.810	4.795	4.654	4.669	4.619	4.734	4.749	4.649	4.674
15.0	4.845	4.774	4.734	4.573	4.584	4.563	4.699	4.694	4.558	4.584
18.0	4.815	4.724	4.659	4.473	4.493	4.513	4.649	4.644	4.468	4.483
21.0	4.775	4.684	4.569	4.372	4.388	4.458	4.613	4.579	4.382	4.353
24.0	4.750	4.624	4.453	4.236	4.277	4.377	4.548	4.513	4.241	4.217
27.0	4.719	4.553	4.348	4.086	4.167	4.282	4.493	4.428	4.146	4.061
30.0	4.669	4.488	4.217	3.935	4.036	4.186	4.432	4.338	4.000	3.901
33.0	4.614	4.412	4.086	3.759	3.900	4.076	4.352	4.242	3.879	3.730
36.0	4.559	4.332	3.946	3.568	3.750	3.975	4.276	4.141	3.733	3.539
39.0	4.483	4.251	3.800	3.382	3.589	3.884	4.181	4.031	3.568	3.333
42.0	4.413	4.151	3.644	3.176	3.428	3.769	4.116	3.925	3.412	3.132
45.0	4.327	4.060	3.493	2.965	3.257	3.658	4.060	3.820	3.251	2.910
48.0	4.232	3.955	3.338	2.748	3.071	3.553	3.955	3.709	3.070	2.684
51.0	4.157	3.824	3.177	2.517	2.901	3.427	3.859	3.594	2.889	2.458
54.0	4.076	3.709	3.011	2.281	2.720	3.302	3.764	3.473	2.708	2.217
57.0	3.976	3.603	2.835	2.045	2.554	3.176	3.668	3.348	2.532	1.981
60.0	3.880	3.487	2.659	1.803	2.378	3.050	3.563	3.227	2.366	1.745
63.0	3.775	3.357	2.488	1.552	2.202	2.925	3.462	3.106	2.190	1.513
66.0	3.669	3.246	2.307	1.316	2.026	2.804	3.352	2.981	2.015	1.267
69.0	3.564	3.111	2.132	1.070	1.855	2.688	3.251	2.860	1.834	1.026
72.0	3.458	3.005	1.971	0.8286	1.694	2.568	3.141	2.744	1.668	0.7948
75.0	3.348	2.870	1.810	0.6075	1.558	2.457	3.035	2.624	1.522	0.5636
78.0	3.242	2.764	1.654	0.3864	1.423	2.342	2.920	2.513	1.402	0.3674
81.0	3.131	2.643	1.538	0.1955	1.302	2.226	2.804	2.403	1.266	0.1814
84.0	3.006	2.533	1.418	0.0451	1.192	2.105	2.688	2.282	1.155	0.0406
87.0	2.885	2.412	1.312	0.0201	1.091	1.990	2.568	2.166	1.050	0.0150
90.0	2.765	2.296	1.222	0.0251	1.010	1.884	2.447	2.051	0.9546	0
93.0	2.634	2.186	1.141	0.0251	0.9350	1.774	2.316	1.935	0.8842	0
96.0	2.508	2.070	1.061	0.0302	0.8698	1.673	2.201	1.835	0.8238	0
99.0	2.383	1.874	1.000	0.0302	0.8244	1.457	2.070	1.589	0.7688	0
102.0	2.217	1.724	0.9500	0.0402	0.7593	1.412	1.939	1.548	0.7178	0
105.0	2.091	1.648	0.8294	0.0402	0.6134	1.357	1.834	1.488	0.5729	0
108.0	1.976	1.573	0.8193	0.0402	0.5880	1.296	1.739	1.408	0.5477	0
111.0	1.870	1.508	0.7844	0.0402	0.5780	1.171	1.628	1.302	0.5277	0
114.0	1.769	1.427	0.7421	0.0402	0.5328	1.100	1.492	1.252	0.4974	0
117.0	1.669	1.362	0.7359	0.0402	0.5078	1.030	1.402	1.186	0.4763	0
120.0	1.588	1.306	0.6888	0.0452	0.4877	0.9848	1.337	1.116	0.4673	0
123.0	1.508	1.236	0.6234	0.0452	0.4725	0.9196	1.266	1.056	0.4583	0
126.0	1.438	1.176	0.5631	0.0503	0.4524	0.8643	1.191	0.9803	0.4423	0
129.0	1.357	1.105	0.4927	0.0553	0.4222	0.8090	1.110	0.9249	0.4119	0
132.0	1.277	0.9847	0.4056	0.0553	0.4071	0.7588	1.040	0.8746	0.3776	0
135.0	1.206	0.8641	0.3842	0.0603	0.3871	0.6835	0.9747	0.8243	0.3646	0
138.0	1.131	0.7385	0.3519	0.0753	0.3569	0.6331	0.8793	0.7540	0.3516	0.0200
141.0	1.056	0.6480	0.3411	0.0754	0.3368	0.5977	0.8238	0.7038	0.3115	0.0201
144.0	0.9753	0.5577	0.3389	0.0754	0.3117	0.5177	0.7536	0.6434	0.2948	0.0251
147.0	0.8949	0.4723	0.3368	0.0754	0.2916	0.4723	0.6732	0.5982	0.2848	0.0402
150.0	0.8194	0.4018	0.3167	0.0754	0.2664	0.4321	0.6031	0.5429	0.2712	0.0402
153.0	0.7290	0.3565	0.3124	0.0754	0.2314	0.3718	0.5475	0.5027	0.2311	0.0402
156.0	0.6536	0.3064	0.3081	0.0754	0.1962	0.3265	0.4872	0.4574	0.1960	0.0402
159.0	0.5882	0.2822	0.3038	0.0754	0.1609	0.2813	0.4268	0.4122	0.1607	0.0452
162.0	0.5029	0.2411	0.2995	0.0754	0.1309	0.2310	0.3618	0.3770	0.1356	0.0553
165.0	0.4425	0.2111	0.3015	0.0754	0.0805	0.1857	0.3164	0.3218	0.1205	0.0603
168.0	0.2319	0.2061	0.2845	0.0754	0.0754	0.1156	0.1306	0.2616	0.0703	0.0703
171.0	0.2062	0.1985	0.2665	0.0754	0.0704	0.0704	0.1102	0.2062	0.0653	0.0753
174.0	0.1811	0.1909	0.2513	0.0754	0.0704	0.0754	0.0653	0.1460	0.0653	0.0804
177.0	0.1509	0.1406	0.2014	0.0754	0.0704	0.0754	0.0503	0.0805	0.0653	0.1104
180.0	0.0754	0.0704	0.0905	0.0754	0.1307	0.1156	0.0503	0.0704	0.0653	0.1307
G/C	300.0	330.0								
0.0	4.790	4.780								
3.0	4.785	4.795								
6.0	4.785	4.798								
9.0	4.744	4.789								
12.0	4.704	4.781								
15.0	4.634	4.773								
18.0	4.553	4.765								
21.0	4.467	4.704								
24.0	4.347	4.654								
27.0	4.226	4.589								
30.0	4.101	4.528								

C Range: 0 - 360DEG
 C Interval: 30.0DEG
 Test Speed: HIGH
 Temperature: 25.3DEG
 Operators: LPC
 Test Date: 2021-12-10

γ Range: 0 - 180DEG
 γ Interval: 1.0DEG
 Test System: EVERFINE GO-2000B_V1 SYSTEM V2.0.362
 Humidity: 65.0%
 Test Distance: 9.200m [K=1.0000]
 Remarks:

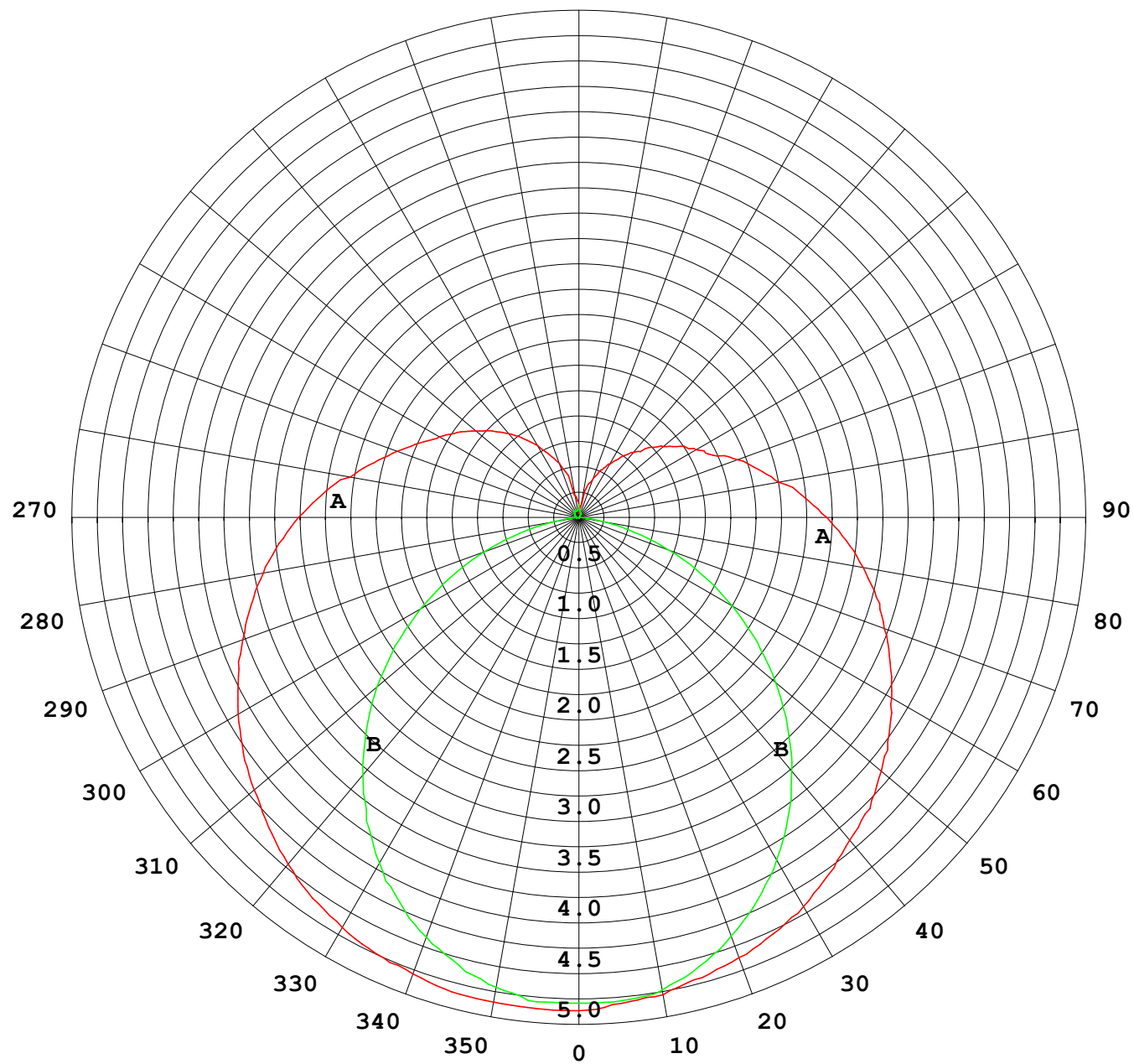
Photometric Data Table [cd]

33.0	3.975	4.478
36.0	3.834	4.398
39.0	3.699	4.327
42.0	3.578	4.242
45.0	3.412	4.157
48.0	3.271	4.061
51.0	3.110	3.951
54.0	2.950	3.835
57.0	2.784	3.724
60.0	2.618	3.609
63.0	2.452	3.498
66.0	2.286	3.388
69.0	2.105	3.267
72.0	1.954	3.147
75.0	1.789	3.031
78.0	1.643	2.915
81.0	1.512	2.805
84.0	1.397	2.694
87.0	1.276	2.579
90.0	1.186	2.468
93.0	1.110	2.362
96.0	1.035	2.252
99.0	0.9646	2.032
102.0	0.8791	1.875
105.0	0.7790	1.809
108.0	0.7668	1.729
111.0	0.7485	1.614
114.0	0.7134	1.468
117.0	0.6782	1.337
120.0	0.6229	1.318
123.0	0.5628	1.298
126.0	0.5427	1.272
129.0	0.5226	1.216
132.0	0.4773	1.096
135.0	0.4422	0.9703
138.0	0.3869	0.8146
141.0	0.3568	0.7388
144.0	0.3266	0.6837
147.0	0.3052	0.6133
150.0	0.3013	0.5530
153.0	0.2974	0.5028
156.0	0.2934	0.4424
159.0	0.2895	0.3822
162.0	0.2856	0.3268
165.0	0.2817	0.3041
168.0	0.2777	0.2966
171.0	0.2612	0.2891
174.0	0.2260	0.2815
177.0	0.1957	0.2714
180.0	0.1156	0.1357

C Range: 0 - 360DEG
 C Interval: 30.0DEG
 Test Speed: HIGH
 Temperature: 25.3DEG
 Operators: LPC
 Test Date: 2021-12-10

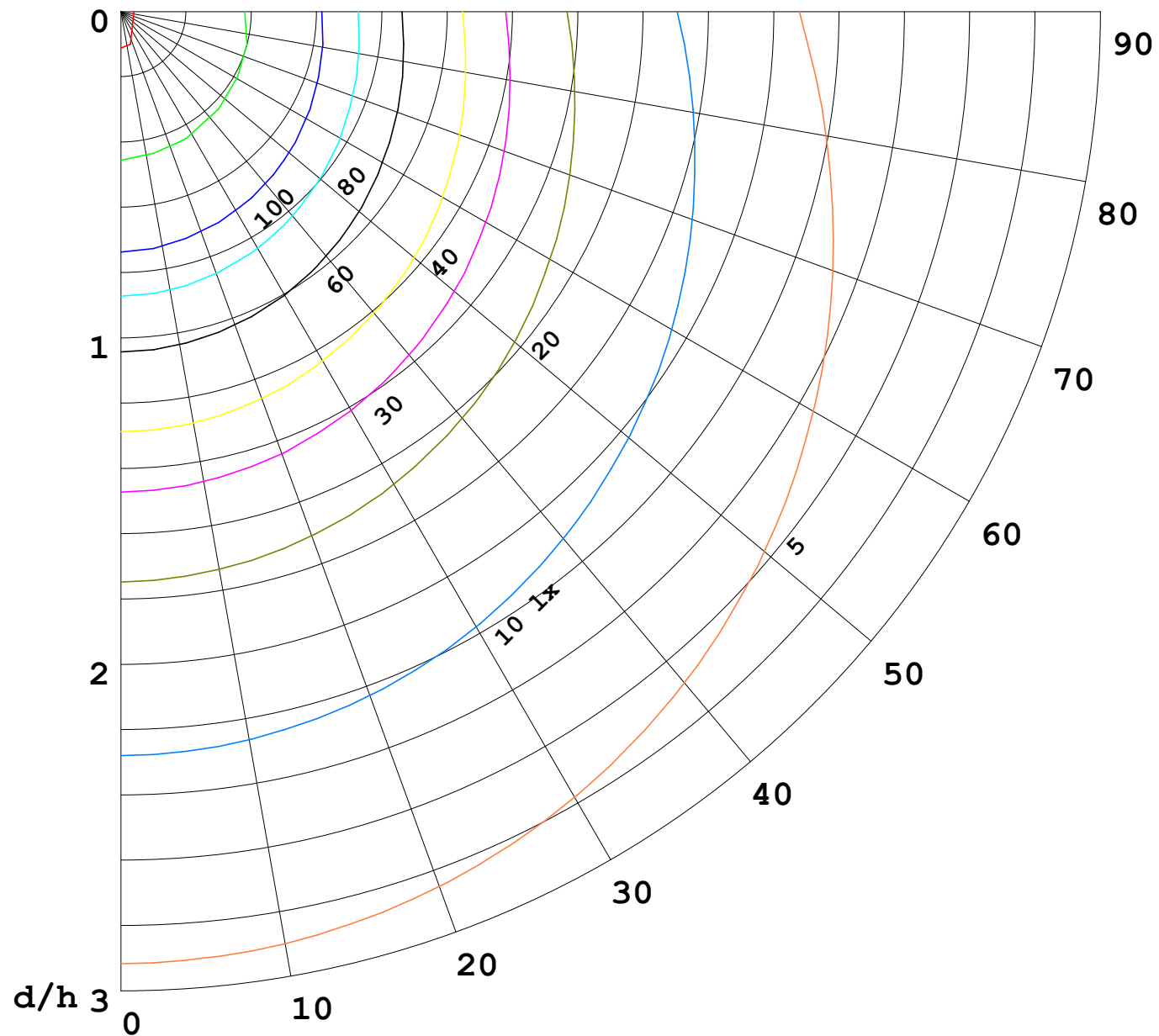
γ Range: 0 - 180DEG
 γ Interval: 1.0DEG
 Test System: EVERFINE GO-2000B_V1 SYSTEM V2.0.362
 Humidity: 65.0%
 Test Distance: 9.200m [K=1.0000]
 Remarks:

I (cd)



1000 lm

$\kappa = 1$



F = 5000 lm
 K = 0.7
 Hcc = 0.0 m
 Hfc = 0.0 m
 Eave = 100 lx

	Pcc	Pw	Pfc
—	70	50	30
—	50	30	20

