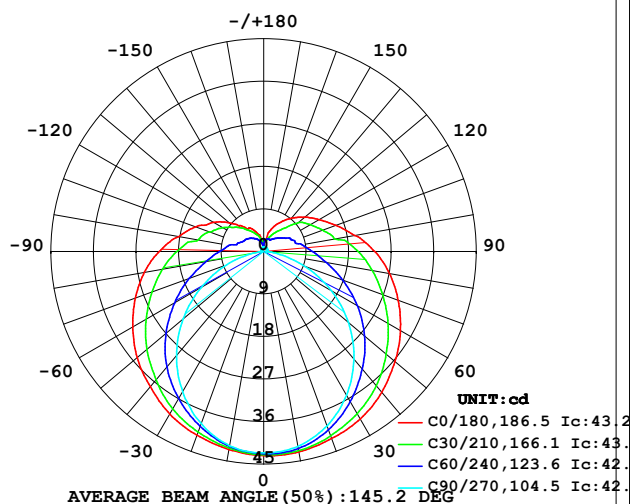


## LUMINAIRE PHOTOMETRIC TEST REPORT

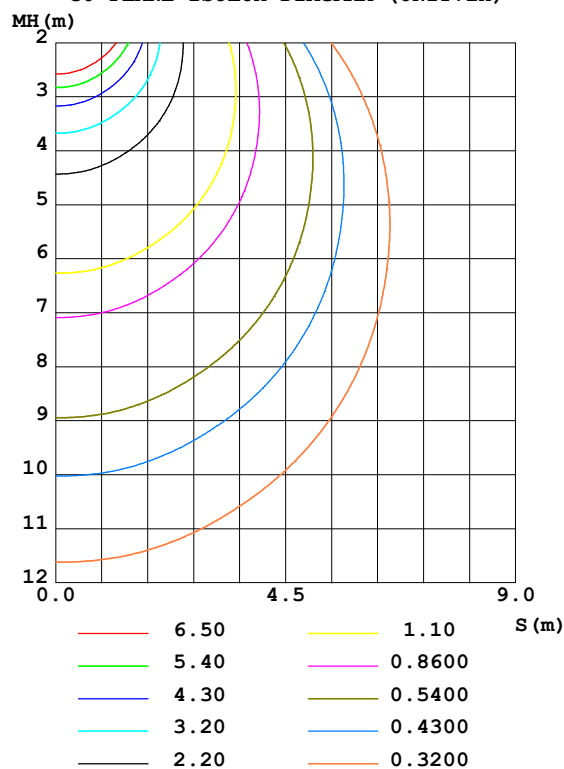
Test:U:48.00V I:0.2973A P:14.27W PF:1.000 Freq:50.00Hz Lamp Flux:211.962x1 lm		
NAME: SF21-48V-5050-60-RGB	TYPE: 硅胶	WEIGHT:
SPEC.:	DIM.: 28mm*11.5mm	SERIAL No.:2021120910
MFR.: OLYMPIA	SUR.:1*0.016	Shielding Angle:

DATA OF LAMP		PHOTOMETRIC DATA Eff: 14.85 lm/W			
MODEL	5050	I <sub>max</sub> (cd)	43.25	S/MH (C0/180)	1.38
NOMINAL POWER (W)	10	LOR (%)	100.0	S/MH (C90/270)	1.20
RATED VOLTAGE (V)	48	TOTAL FLUX (lm)	211.96	η UP, DN (C0-180)	11.4, 39.1
NOMINAL FLUX (lm)	211.962	CIE CLASS	SEMI-D.	η UP, DN (C180-360)	11.0, 38.5
LAMPS INSIDE	1	η up (%)	22.4	CIBSE SHR NOM	1.50
TEST VOLTAGE (V)	48	η down (%)	77.6	CIBSE SHR MAX	1.55

LUMINOUS INTENSITY DISTRIBUTION DIAGRAM



C0 PLANE ISOLUX DIAGRAM (UNIT: lx)



C Range: 0 - 360DEG  
C Interval: 30.0DEG  
Test Speed: HIGH  
Temperature: 25.3DEG  
Operators: LPC  
Test Date: 2021-12-09

γ Range: 0 - 180DEG  
γ Interval: 1.0DEG  
Test System: EVERFINE GO-2000B\_V1 SYSTEM V2.0.362  
Humidity: 65.0%  
Test Distance: 9.200m [K=1.0000]  
Remarks:

## ZONAL FLUX DIAGRAM

ZONAL FLUX DIAGRAM:

$\gamma$	C0	C45	C90	C135	C180	C225	C270	C315	$\gamma$	$\Phi$ zone	$\Phi$ total	%lum, lamp
10	43.06	42.57	41.86	41.68	42.54	42.06	41.72	42.13	0- 10	4.055	4.055	1.91,1.91
20	42.12	40.82	39.25	39.72	41.35	40.00	38.72	40.24	10- 20	11.68	15.73	7.42,7.42
30	40.90	38.14	35.10	37.00	39.74	37.22	34.29	37.50	20- 30	17.98	33.71	15.9,15.9
40	38.88	34.78	29.71	33.45	37.34	33.66	28.70	34.26	30- 40	22.41	56.13	26.5,26.5
50	36.28	30.85	23.41	29.48	34.94	29.64	22.29	30.52	40- 50	24.67	80.79	38.1,38.1
60	33.42	26.62	16.48	25.12	32.00	25.26	15.31	26.37	50- 60	24.72	105.5	49.8,49.8
70	30.30	22.32	9.337	20.83	28.89	20.96	8.404	22.14	60- 70	22.84	128.4	60.6,60.6
80	27.05	18.39	3.041	16.97	25.65	17.08	2.336	18.27	70- 80	19.71	148.1	69.9,69.9
90	23.52	15.16	0.5881	13.78	22.09	13.86	0.4183	15.07	80- 90	16.32	164.4	77.6,77.6
100	19.52	11.76	0.6788	10.89	18.29	10.83	0.4722	11.73	90-100	13.42	177.8	83.9,83.9
110	16.25	10.10	0.7242	8.914	15.33	8.826	0.5377	9.992	100-110	10.43	188.2	88.8,88.8
120	13.53	8.562	0.7790	7.199	12.32	7.404	0.5728	8.471	110-120	8.180	196.4	92.7,92.7
130	11.34	6.954	0.8293	6.020	9.405	6.152	0.6432	6.982	120-130	6.190	202.6	95.6,95.6
140	9.220	4.945	0.8795	5.003	6.978	4.959	0.7186	4.825	130-140	4.248	206.9	97.6,97.6
150	7.179	3.676	0.9675	4.073	5.768	3.985	0.8693	3.601	140-150	2.672	209.5	98.8,98.8
160	5.144	2.956	0.9796	3.023	4.105	3.018	0.9304	2.825	150-160	1.563	211.1	99.6,99.6
170	2.237	2.465	0.9917	1.930	1.889	1.902	0.9440	2.455	160-170	0.7123	211.8	99.9,99.9
180	1.060	1.035	1.005	1.015	1.060	1.035	0.9649	1.025	170-180	0.1626	212.0	100,100
DEG	LUMINOUS INTENSITY:cd									UNIT:lm		

Conical surface Flux(90deg): 68.314 lm

%lum = 32.2%

%lamp = 32.2%

Conical surface Flux(120deg): 105.51 lm

%lum = 49.8%

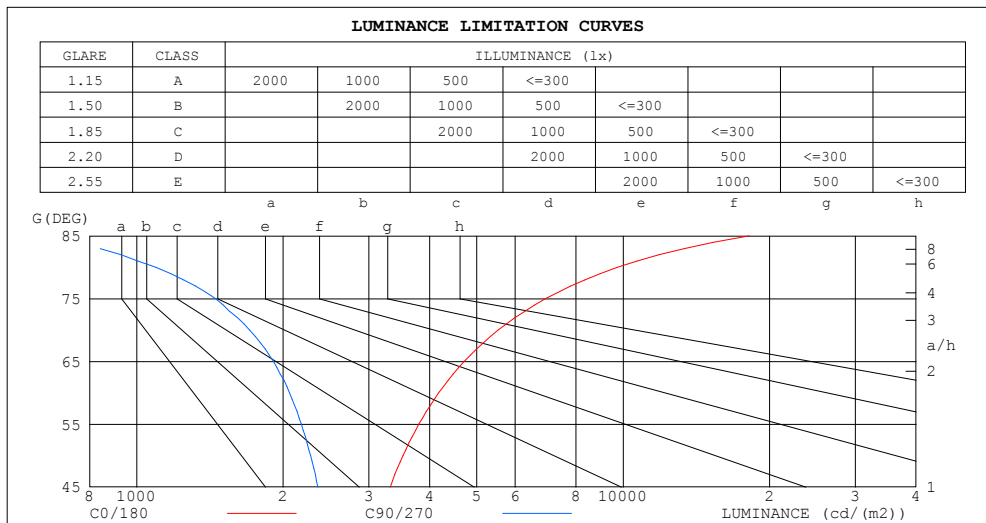
%lamp = 49.8%

C Range: 0 - 360DEG  
 C Interval: 30.0DEG  
 Test Speed: HIGH  
 Temperature:25.3DEG  
 Operators:LPC  
 Test Date:2021-12-09

$\gamma$  Range: 0 - 180DEG  
 $\gamma$  Interval: 1.0DEG  
 Test System:EVERFINE GO-2000B\_V1 SYSTEM V2.0.362  
 Humidity:65.0%  
 Test Distance:9.200m [K=1.0000]  
 Remarks:

## LUMINANCE LIMITATION CURVES

Test:U:48.00V I:0.2973A P:14.27W PF:1.000 Freq:50.00Hz Lamp Flux:211.962x1 lm		
NAME: SF21-48V-5050-60-RGB	TYPE: 硅胶	WEIGHT:
SPEC.:	DIM.: 28mm*11.5mm	SERIAL No.:2021120910
MFR.: OLYMPIA	SUR.:1*0.016	Shielding Angle:



LUMINANCE cd/(m2)		
G (DEG)	C0/180	C90/270
85	18149	661
80	9735	1095
75	6930	1453
70	5537	1706
65	4714	1910
60	4177	2060
55	3803	2179
50	3528	2277
45	3321	2357

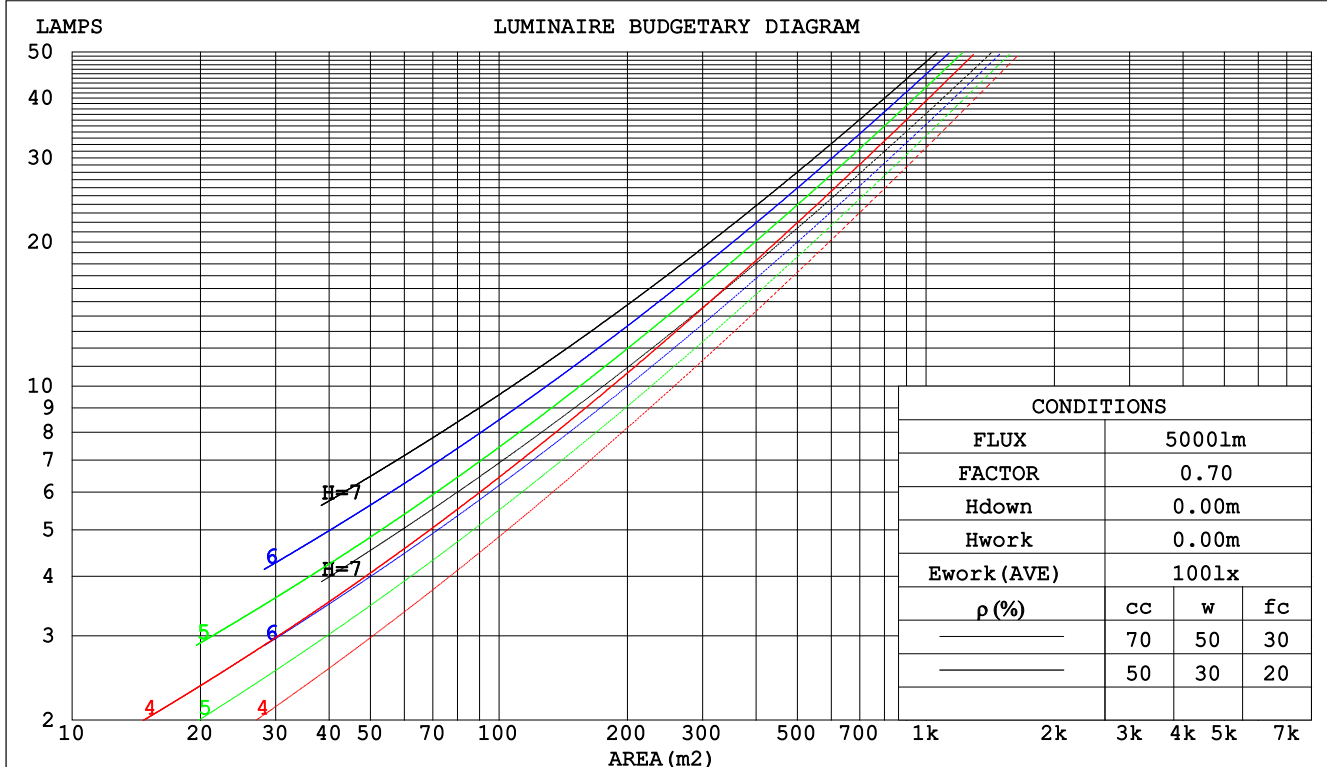
C Range: 0 - 360DEG  
C Interval: 30.0DEG  
Test Speed: HIGH  
Temperature:25.3DEG  
Operators:LPC  
Test Date:2021-12-09

$\gamma$  Range: 0 - 180DEG  
 $\gamma$  Interval: 1.0DEG  
Test System:EVERFINE GO-2000B\_V1 SYSTEM V2.0.362  
Humidity:65.0%  
Test Distance:9.200m [K=1.0000]  
Remarks:

## CU AND LUMINAIRE BUDGETARY ESTIMATE DIAGRAM

Test:U:48.00V I:0.2973A P:14.27W PF:1.000 Freq:50.00Hz Lamp Flux:211.962x1 lm		
NAME: SF21-48V-5050-60-RGB	TYPE:硅胶	WEIGHT:
SPEC.:	DIM.: 28mm*11.5mm	SERIAL No.:2021120910
MFR.: OLYMPIA	SUR.:1*0.016	Shielding Angle:

pcc	80%			70%			50%			30%			10%			0
pw	50%	30%	10%	50%	30%	10%	50%	30%	10%	50%	30%	10%	50%	30%	10%	0
pfc	20%			20%			20%			20%			20%			0
RCR	RCR:Room Cavity Ratio						Coefficients of Utilization(CU)									
0.0	1.14	1.14	1.14	1.08	1.08	1.08	.99	.99	.99	.90	.90	.90	.81	.81	.81	.78
1.0	.94	.89	.84	.90	.85	.81	.82	.78	.74	.74	.71	.68	.67	.64	.62	.58
2.0	.81	.73	.66	.77	.70	.64	.70	.64	.59	.63	.58	.54	.57	.53	.50	.46
3.0	.70	.61	.54	.67	.58	.52	.60	.54	.48	.55	.49	.44	.49	.45	.41	.38
4.0	.61	.52	.45	.59	.50	.43	.53	.46	.40	.48	.42	.37	.43	.39	.34	.31
5.0	.54	.45	.38	.52	.43	.37	.47	.40	.34	.43	.37	.32	.39	.34	.30	.27
6.0	.49	.39	.33	.47	.38	.32	.42	.35	.30	.39	.32	.28	.35	.30	.26	.23
7.0	.44	.35	.29	.42	.34	.28	.38	.31	.26	.35	.29	.24	.32	.27	.23	.20
8.0	.40	.31	.25	.38	.30	.25	.35	.28	.23	.32	.26	.22	.29	.24	.20	.18
9.0	.36	.28	.22	.35	.27	.22	.32	.25	.21	.30	.24	.19	.27	.22	.18	.16
10.0	.34	.26	.20	.32	.25	.20	.30	.23	.19	.27	.22	.17	.25	.20	.16	.14



C Range: 0 - 360DEG  
 C Interval: 30.0DEG  
 Test Speed: HIGH  
 Temperature:25.3DEG  
 Operators:LPC  
 Test Date:2021-12-09

γ Range: 0 - 180DEG  
 γ Interval: 1.0DEG  
 Test System:EVERFINE GO-2000B\_V1 SYSTEM V2.0.362  
 Humidity:65.0%  
 Test Distance:9.200m [K=1.0000]  
 Remarks:

## WEC AND CCEC

Test:U:48.00V I:0.2973A P:14.27W PF:1.000 Freq:50.00Hz Lamp Flux:211.962x1 lm		
NAME: SF21-48V-5050-60-RGB	TYPE: 硅胶	WEIGHT:
SPEC.:	DIM.: 28mm*11.5mm	SERIAL No.:2021120910
MFR.: OLYMPIA	SUR.:1*0.016	Shielding Angle:

pcc	80%			70%			50%			30%			10%			0	
pw	50%	30%	10%	50%	30%	10%	50%	30%	10%	50%	30%	10%	50%	30%	10%	0	
pfc	20%			20%			20%			20%			20%			0	
RCR	RCR:Room Cavity Ratio						Wall Exitance Coeffcients (WEC)										
0.0																	
1.0	.386	.220	.070	.372	.212	.067	.346	.199	.063	.322	.186	.060	.300	.174	.056		
2.0	.333	.182	.056	.320	.176	.054	.296	.165	.051	.274	.154	.048	.254	.144	.045		
3.0	.295	.157	.047	.284	.152	.046	.262	.142	.043	.242	.133	.041	.223	.124	.038		
4.0	.265	.138	.041	.255	.133	.039	.235	.125	.037	.217	.117	.035	.200	.109	.033		
5.0	.241	.123	.036	.232	.119	.035	.214	.111	.033	.197	.104	.031	.181	.097	.029		
6.0	.221	.111	.032	.212	.107	.031	.196	.100	.029	.180	.094	.028	.166	.087	.026		
7.0	.204	.101	.029	.196	.097	.028	.181	.091	.026	.167	.085	.025	.153	.080	.023		
8.0	.189	.092	.026	.181	.089	.025	.168	.084	.024	.155	.078	.023	.142	.073	.021		
9.0	.176	.085	.024	.169	.082	.023	.156	.077	.022	.144	.072	.021	.133	.068	.020		
10.0	.165	.079	.022	.158	.076	.021	.147	.072	.020	.135	.067	.019	.125	.063	.018		

pcc	80%			70%			50%			30%			10%			0	
pw	50%	30%	10%	50%	30%	10%	50%	30%	10%	50%	30%	10%	50%	30%	10%	0	
pfc	20%			20%			20%			20%			20%			0	
RCR	RCR:Room Cavity Ratio						Ceiling Cavity Exitance Coefficients(CCEC)										
0.0	.362	.362	.362	.309	.309	.309	.211	.211	.211	.121	.121	.121	.039	.039	.039		
1.0	.358	.328	.301	.306	.281	.259	.210	.194	.179	.121	.112	.104	.039	.036	.034		
2.0	.351	.305	.267	.301	.263	.230	.206	.182	.161	.119	.106	.094	.038	.034	.031		
3.0	.344	.289	.245	.295	.249	.213	.202	.173	.149	.117	.101	.088	.038	.033	.029		
4.0	.336	.277	.231	.288	.239	.201	.198	.167	.141	.115	.098	.084	.037	.032	.028		
5.0	.328	.267	.222	.282	.231	.193	.194	.161	.136	.113	.095	.081	.036	.031	.027		
6.0	.321	.259	.215	.276	.224	.187	.190	.157	.132	.110	.092	.079	.036	.030	.026		
7.0	.314	.253	.209	.270	.219	.183	.187	.153	.129	.108	.090	.077	.035	.030	.025		
8.0	.307	.247	.206	.265	.214	.179	.183	.150	.127	.107	.089	.076	.034	.029	.025		
9.0	.301	.242	.203	.259	.210	.177	.180	.148	.125	.105	.087	.075	.034	.029	.025		
10.0	.295	.238	.200	.255	.207	.175	.177	.146	.124	.103	.086	.074	.033	.028	.025		

C Range: 0 - 360DEG  
 C Interval: 30.0DEG  
 Test Speed: HIGH  
 Temperature:25.3DEG  
 Operators:LPC  
 Test Date:2021-12-09

γ Range: 0 - 180DEG  
 γ Interval: 1.0DEG  
 Test System:EVERFINE GO-2000B\_V1 SYSTEM V2.0.362  
 Humidity:65.0%  
 Test Distance:9.200m [K=1.0000]  
 Remarks:

### UGR(Unified Glare Rating) Table

Test:U:48.00V I:0.2973A P:14.27W PF:1.000 Freq:50.00Hz Lamp Flux:211.962x1 lm										
NAME: SF21-48V-5050-60-RGB					TYPE: 硅胶			WEIGHT:		
SPEC.:					DIM.: 28mm*11.5mm			SERIAL No.:2021120910		
MFR.: OLYMPIA					SUR.:1*0.016			Shielding Angle:		
ceiling/cavity	0.7	0.7	0.5	0.5	0.3	0.7	0.7	0.5	0.5	0.3
walls	0.5	0.3	0.5	0.3	0.3	0.5	0.3	0.5	0.3	0.3
working plane	0.2	0.2	0.2	0.2	0.2	0.2	0.2	0.2	0.2	0.2
Room dimensions	Viewed crosswise					Viewed endwise				
x = 2H y = 2H	22.1	23.4	22.6	24.0	24.6	19.4	20.8	20.0	21.3	22.0
3H	24.9	26.1	25.5	26.7	27.4	20.9	22.1	21.5	22.7	23.4
4H	26.5	27.6	27.1	28.2	28.9	21.4	22.6	22.0	23.2	23.9
6H	28.2	29.3	28.8	29.9	30.7	21.8	22.8	22.4	23.5	24.2
8H	29.2	30.2	29.8	30.9	31.6	21.8	22.9	22.5	23.5	24.3
12H	30.3	31.3	31.0	32.0	32.7	21.9	22.9	22.5	23.5	24.3
4H 2H	22.6	23.8	23.2	24.4	25.1	20.7	21.9	21.4	22.5	23.2
3H	25.7	26.7	26.3	27.3	28.1	22.5	23.5	23.1	24.2	24.9
4H	27.4	28.4	28.1	29.1	29.8	23.3	24.2	23.9	24.9	25.7
6H	29.4	30.2	30.1	30.9	31.8	23.9	24.7	24.6	25.4	26.2
8H	30.5	31.3	31.2	32.0	32.9	24.1	24.8	24.8	25.6	26.4
12H	31.8	32.5	32.5	33.2	34.1	24.2	24.9	24.9	25.6	26.5
8H 4H	27.8	28.6	28.5	29.3	30.1	24.5	25.3	25.3	26.0	26.9
6H	30.1	30.7	30.8	31.5	32.4	25.6	26.3	26.3	27.0	27.9
8H	31.4	32.0	32.1	32.7	33.6	26.1	26.7	26.8	27.4	28.3
12H	32.9	33.4	33.7	34.2	35.1	26.4	27.0	27.2	27.7	28.7
12H 4H	27.8	28.5	28.5	29.2	30.1	25.0	25.7	25.7	26.4	27.3
6H	30.2	30.8	30.9	31.5	32.4	26.3	26.9	27.1	27.7	28.6
8H	31.6	32.1	32.4	32.9	33.8	27.0	27.5	27.8	28.3	29.2
Variations with the observer position at spacings:										
S = 1.0H	+ 0.1 / - 0.1					+ 0.1 / - 0.1				
1.5H	+ 0.2 / - 0.3					+ 0.2 / - 0.3				
2.0H	+ 0.2 / - 0.3					+ 0.3 / - 0.4				

CIE Pub.117, 212.0 lm Total Lamp Luminous Flux Correct (8log(F/F0) = -5.4)

C Range: 0 - 360DEG  
C Interval: 30.0DEG  
Test Speed: HIGH  
Temperature:25.3DEG  
Operators:LPC  
Test Date:2021-12-09

γ Range: 0 - 180DEG  
γ Interval: 1.0DEG  
Test System:EVERFINE GO-2000B\_V1 SYSTEM V2.0.362  
Humidity:65.0%  
Test Distance:9.200m [K=1.0000]  
Remarks:

## UTILIZATION FACTORS TABLE

Test:U:48.00V I:0.2973A P:14.27W PF:1.000 Freq:50.00Hz Lamp Flux:211.962x1 lm		
NAME: SF21-48V-5050-60-RGB	TYPE: 硅胶	WEIGHT:
SPEC.:	DIM.: 28mm*11.5mm	SERIAL No.:2021120910
MFR.: OLYMPIA	SUR.:1*0.016	Shielding Angle:

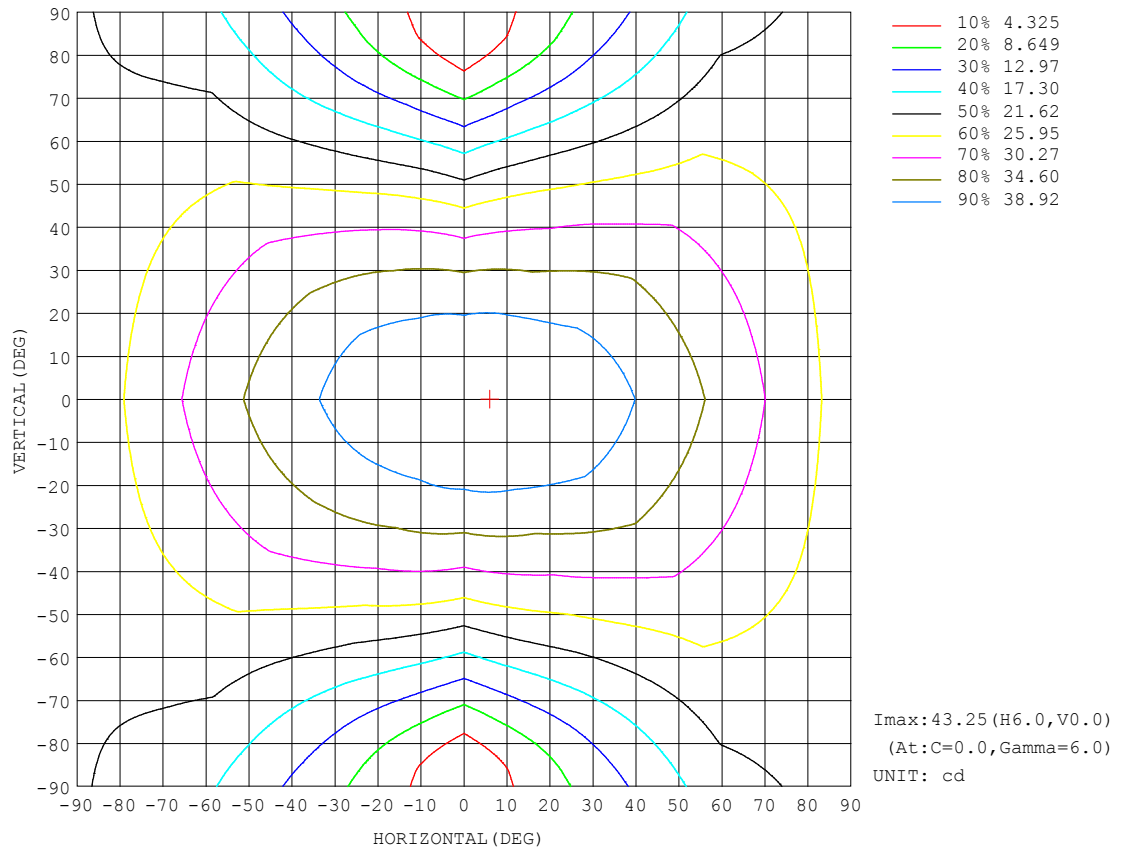
REFLECTANCE										
Ceiling	0.8	0.8	0.8	0.7	0.7	0.7	0.5	0.5	0.5	0
Walls	0.7	0.5	0.3	0.7	0.5	0.3	0.7	0.5	0.3	0
Working plane	0.2	0.2	0.2	0.2	0.2	0.2	0.2	0.2	0.2	0
ROOM INDEX	UTILIZATION FACTORS (PERCENT) $k(RI) \times RCR = 5$									
$k = 0.60$	46	34	27	45	33	26	43	32	26	19
0.80	55	42	34	54	42	34	51	40	33	25
1.00	63	50	42	61	49	41	57	49	39	30
1.25	70	57	49	67	56	48	63	53	46	35
1.50	75	63	54	72	61	53	67	57	50	39
2.00	82	71	63	79	69	61	73	64	58	45
2.50	87	76	68	83	74	66	76	69	62	49
3.00	91	81	74	87	78	71	79	73	67	52
4.00	95	87	81	91	84	78	83	77	72	57
5.00	98	91	85	94	88	82	86	81	76	60
ROOM INDEX	UF (total)									Direct
According to DIN EN 13032-2 2004			Suspended					SHRNOM = 1.25		

C Range: 0 - 360DEG  
 C Interval: 30.0DEG  
 Test Speed: HIGH  
 Temperature: 25.3DEG  
 Operators: LPC  
 Test Date: 2021-12-09

γ Range: 0 - 180DEG  
 γ Interval: 1.0DEG  
 Test System: EVERFINE GO-2000B\_V1 SYSTEM V2.0.362  
 Humidity: 65.0%  
 Test Distance: 9.200m [K=1.0000]  
 Remarks:

## ISOCANDELA DIAGRAM

Test:U:48.00V I:0.2973A P:14.27W PF:1.000 Freq:50.00Hz Lamp Flux:211.962x1 lm		
NAME: SF21-48V-5050-60-RGB	TYPE: 硅胶	WEIGHT:
SPEC.:	DIM.: 28mm*11.5mm	SERIAL No.:2021120910
MFR.: OLYMPIA	SUR.:1*0.016	Shielding Angle:



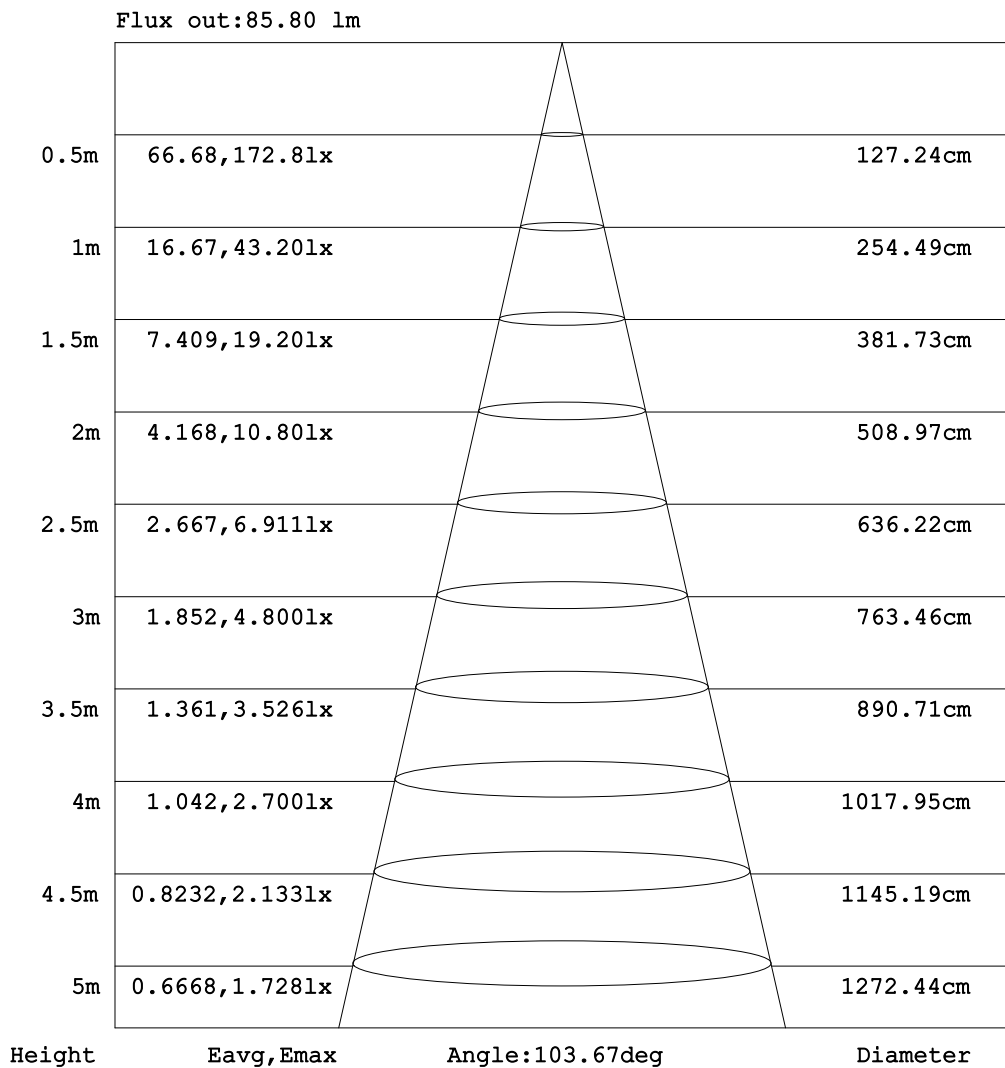
C Range: 0 - 360DEG  
C Interval: 30.0DEG  
Test Speed: HIGH  
Temperature: 25.3DEG  
Operators: LPC  
Test Date: 2021-12-09

$\gamma$  Range: 0 - 180DEG  
 $\gamma$  Interval: 1.0DEG  
Test System: EVERFINE GO-2000B\_V1 SYSTEM V2.0.362  
Humidity: 65.0%  
Test Distance: 9.200m [K=1.0000]  
Remarks:



### AAI Figure

Test:U:48.00V I:0.2973A P:14.27W PF:1.000 Freq:50.00Hz Lamp Flux:211.962x1 lm		
NAME: SF21-48V-5050-60-RGB	TYPE: 硅胶	WEIGHT:
SPEC.:	DIM.: 28mm*11.5mm	SERIAL No.:2021120910
MFR.: OLYMPIA	SUR.:1*0.016	Shielding Angle:



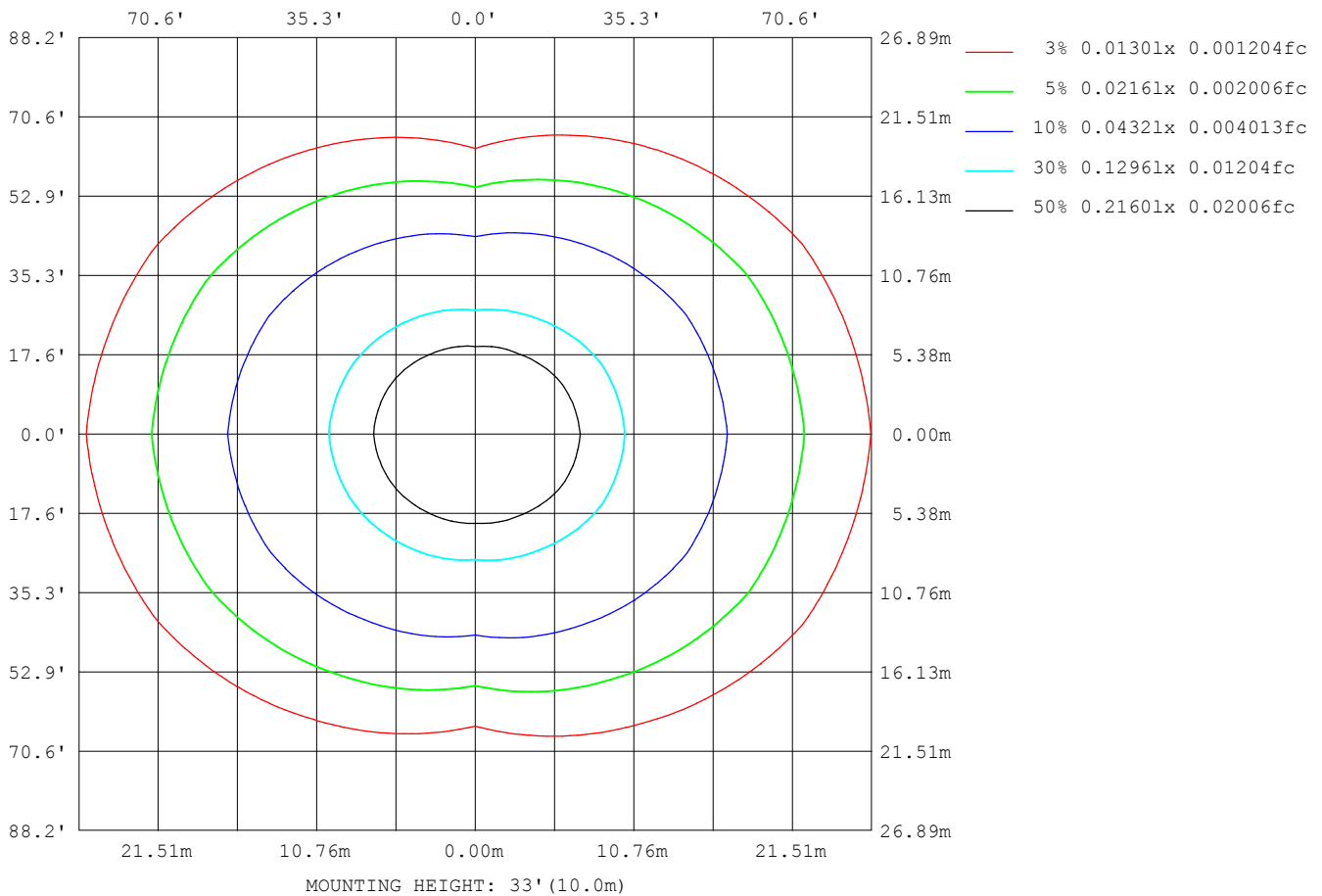
Note:The Curves indicate the illuminated area and the average illumination when the luminaire is at different distance.

C Range: 0 - 360DEG  
C Interval: 30.0DEG  
Test Speed: HIGH  
Temperature:25.3DEG  
Operators:LPC  
Test Date:2021-12-09

γ Range: 0 - 180DEG  
γ Interval: 1.0DEG  
Test System:EVERFINE GO-2000B\_V1 SYSTEM V2.0.362  
Humidity:65.0%  
Test Distance:9.200m [K=1.0000]  
Remarks:

## ISOLUX DIAGRAM

Test:U:48.00V I:0.2973A P:14.27W PF:1.000 Freq:50.00Hz Lamp Flux:211.962x1 lm		
NAME: SF21-48V-5050-60-RGB	TYPE: 硅胶	WEIGHT:
SPEC.:	DIM.: 28mm*11.5mm	SERIAL No.:2021120910
MFR.: OLYMPIA	SUR.:1*0.016	Shielding Angle:



C Range: 0 - 360DEG  
C Interval: 30.0DEG  
Test Speed: HIGH  
Temperature:25.3DEG  
Operators:LPC  
Test Date:2021-12-09

$\gamma$  Range: 0 - 180DEG  
 $\gamma$  Interval: 1.0DEG  
Test System:EVERFINE GO-2000B\_V1 SYSTEM V2.0.362  
Humidity:65.0%  
Test Distance:9.200m [K=1.0000]  
Remarks:

## LED Avg.L Report

Test:U:48.00V I:0.2973A P:14.27W PF:1.000 Freq:50.00Hz Lamp Flux:211.962x1 lm		
NAME: SF21-48V-5050-60-RGB	TYPE:硅胶	WEIGHT:
SPEC.:	DIM.: 28mm*11.5mm	SERIAL No.:2021120910
MFR.: OLYMPIA	SUR.:1*0.016	Shielding Angle:

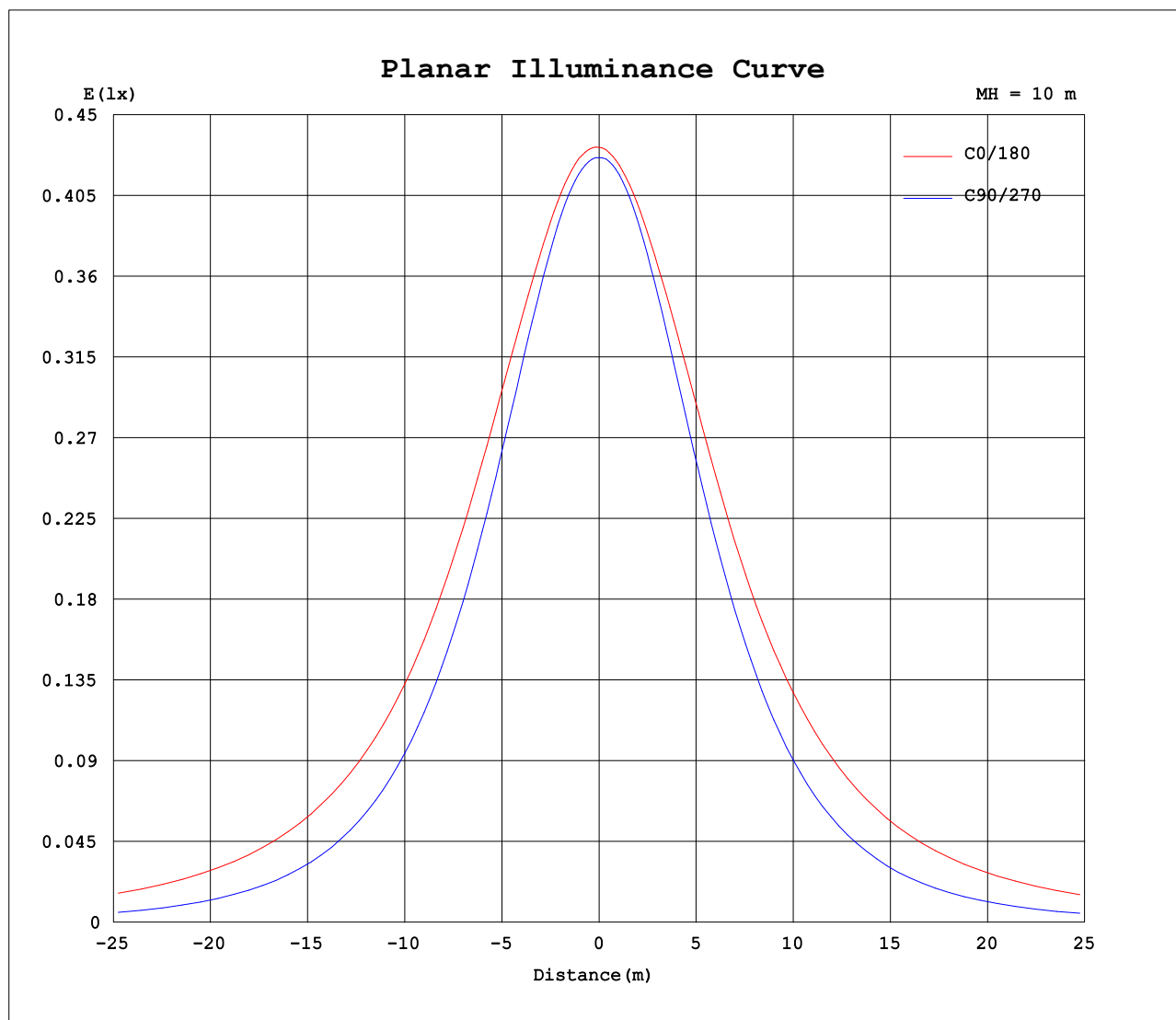
AvgL	cd/m2
L_0~180 (65) av	4609
L_0~180 (75) av	6759
L_0~180 (85) av	17652
L_90~270 (65) av	1828
L_90~270 (75) av	1347
L_90~270 (85) av	528
L_45 (65) av	3536
L_45 (75) av	4800
L_45 (85) av	11780

Standard: GB/T 29293-2012

C Range: 0 - 360DEG  
C Interval: 30.0DEG  
Test Speed: HIGH  
Temperature:25.3DEG  
Operators:LPC  
Test Date:2021-12-09

γ Range: 0 - 180DEG  
γ Interval: 1.0DEG  
Test System:EVERFINE GO-2000B\_V1 SYSTEM V2.0.362  
Humidity:65.0%  
Test Distance:9.200m [K=1.0000]  
Remarks:

## Planar Illuminance Curve



C Range: 0 - 360DEG  
C Interval: 30.0DEG  
Test Speed: HIGH  
Temperature: 25.3DEG  
Operators: LPC  
Test Date: 2021-12-09

$\gamma$  Range: 0 - 180DEG  
 $\gamma$  Interval: 1.0DEG  
Test System: EVERFINE GO-2000B\_V1 SYSTEM V2.0.362  
Humidity: 65.0%  
Test Distance: 9.200m [K=1.0000]  
Remarks:

## LUMINOUS DISTRIBUTION INTENSITY DATA

Test:U:48.00V I:0.2973A P:14.27W PF:1.000 Freq:50.00Hz Lamp Flux:211.962x1 lm		
NAME: SF21-48V-5050-60-RGB	TYPE: 硅胶	WEIGHT:
SPEC.:	DIM.: 28mm*11.5mm	SERIAL No.:2021120910
MFR.: OLYMPIA	SUR.:1*0.016	Shielding Angle:

Table--1

UNIT: cd

C (DEG) γ (DEG)	0	30	60	90	120	150	180	210	240	270	300	330						
0	43.2	43.0	42.8	42.6	42.5	42.5	43.2	43.0	42.8	42.6	42.5	42.5						
5	43.2	43.0	42.8	42.5	42.3	42.2	43.0	42.8	42.5	42.4	42.4	42.5						
10	43.1	42.8	42.4	41.9	41.7	41.7	42.5	42.2	41.9	41.7	42.0	42.3						
15	42.6	42.3	41.4	40.8	40.6	41.0	42.0	41.5	40.8	40.4	41.0	41.7						
20	42.1	41.5	40.2	39.3	39.3	40.1	41.4	40.6	39.4	38.7	39.6	40.9						
25	41.6	40.6	38.5	37.4	37.7	39.2	40.7	39.7	37.8	36.7	37.9	39.9						
30	40.9	39.6	36.7	35.1	36.0	38.0	39.7	38.5	36.0	34.3	35.9	39.1						
35	40.0	38.4	34.6	32.5	34.0	36.6	38.6	37.1	34.0	31.6	33.9	38.0						
40	38.9	37.1	32.5	29.7	31.9	35.0	37.3	35.4	31.9	28.7	31.8	36.7						
45	37.6	35.5	30.2	26.7	29.5	33.5	36.2	33.9	29.5	25.6	29.8	35.2						
50	36.3	33.8	27.9	23.4	27.0	32.0	34.9	32.3	27.0	22.3	27.5	33.5						
55	34.9	32.1	25.4	20.0	24.4	30.2	33.5	30.5	24.4	18.8	25.1	31.8						
60	33.4	30.4	22.9	16.5	21.8	28.4	32.0	28.7	21.8	15.3	22.6	30.1						
65	31.9	28.6	20.3	12.9	19.3	26.6	30.5	26.9	19.3	11.8	20.1	28.4						
70	30.3	26.8	17.8	9.34	16.9	24.8	28.9	25.1	16.8	8.40	17.7	26.6						
75	28.7	25.1	15.5	6.02	14.5	23.1	27.3	23.4	14.4	5.14	15.4	24.9						
80	27.0	23.4	13.4	3.04	12.6	21.4	25.6	21.8	12.4	2.34	13.3	23.2						
85	25.3	21.7	11.7	0.92	10.9	19.7	23.9	20.1	10.8	0.55	11.6	21.6						
90	23.5	20.0	10.3	0.59	9.56	18.0	22.1	18.4	9.35	0.42	10.2	19.9						
95	21.7	18.3	9.19	0.61	8.52	16.6	20.3	16.8	8.28	0.43	9.03	18.3						
100	19.5	15.2	8.30	0.68	7.76	14.0	18.3	14.1	7.51	0.47	8.12	15.3						
105	17.8	14.4	7.00	0.70	5.93	13.3	16.8	13.4	5.83	0.53	6.89	14.4						
110	16.2	13.3	6.92	0.72	5.65	12.2	15.3	12.1	5.52	0.54	6.66	13.3						
115	14.8	12.3	6.38	0.75	5.05	10.7	13.4	11.0	5.00	0.54	5.83	12.2						
120	13.5	11.4	5.70	0.78	4.68	9.71	12.3	10.1	4.73	0.57	5.56	11.4						
125	12.4	10.6	5.03	0.81	4.45	8.82	10.9	8.97	4.54	0.61	5.01	10.6						
130	11.3	9.43	4.47	0.83	4.15	7.89	9.40	8.01	4.29	0.64	4.46	9.51						
135	10.3	7.75	4.03	0.84	4.05	6.97	8.12	7.13	4.01	0.68	3.88	7.92						
140	9.22	6.29	3.59	0.88	3.71	6.30	6.98	6.26	3.65	0.72	3.42	6.23						
145	8.19	5.35	3.23	0.90	3.41	5.55	5.81	5.46	3.35	0.76	3.06	5.25						
150	7.18	4.46	2.89	0.97	3.20	4.95	5.77	4.80	3.18	0.87	2.70	4.50						
155	6.23	3.73	2.85	0.97	2.86	4.34	5.01	4.16	2.77	0.91	2.69	3.76						
160	5.14	3.07	2.84	0.98	2.43	3.61	4.10	3.63	2.40	0.93	2.68	2.97						
165	4.26	2.58	2.73	0.99	1.96	2.98	3.60	3.02	1.98	0.94	2.56	2.59						
170	2.24	2.46	2.47	0.99	1.58	2.28	1.89	2.23	1.57	0.94	2.41	2.50						
175	1.79	2.13	2.01	1.00	1.04	1.52	1.47	1.75	1.09	0.95	2.01	2.27						
180	1.06	1.05	1.03	1.01	1.01	1.02	1.06	1.05	1.03	0.96	0.96	1.09						

C Range: 0 - 360DEG  
C Interval: 30.0DEG  
Test Speed: HIGH  
Temperature:25.3DEG  
Operators:LPC  
Test Date:2021-12-09

γ Range: 0 - 180DEG  
γ Interval: 1.0DEG  
Test System:EVERFINE GO-2000B\_V1 SYSTEM V2.0.362  
Humidity:65.0%  
Test Distance:9.200m [K=1.0000]  
Remarks:

## Photometric Data Table [cd]

G/C	0.0	30.0	60.0	90.0	120.0	150.0	180.0	210.0	240.0	270.0
0.0	43.19	43.04	42.78	42.62	42.53	42.46	43.19	43.04	42.78	42.62
3.0	43.24	43.04	42.80	42.57	42.47	42.33	43.07	42.90	42.67	42.58
6.0	43.25	42.99	42.73	42.38	42.22	42.10	42.88	42.68	42.41	42.34
9.0	43.12	42.85	42.47	42.03	41.85	41.79	42.64	42.36	42.03	41.90
12.0	42.91	42.63	42.02	41.47	41.30	41.42	42.32	41.97	41.47	41.24
15.0	42.64	42.29	41.43	40.75	40.65	40.97	41.97	41.50	40.77	40.43
18.0	42.32	41.85	40.71	39.87	39.88	40.48	41.59	41.01	39.97	39.51
21.0	42.03	41.31	39.86	38.90	39.01	39.98	41.22	40.45	39.07	38.33
24.0	41.71	40.76	38.88	37.74	38.05	39.40	40.81	39.87	38.10	37.14
27.0	41.34	40.22	37.82	36.47	37.05	38.76	40.31	39.22	37.08	35.75
30.0	40.90	39.62	36.67	35.10	35.96	38.04	39.74	38.47	35.98	34.29
33.0	40.38	38.92	35.43	33.58	34.81	37.22	39.07	37.65	34.83	32.74
36.0	39.79	38.16	34.17	31.98	33.59	36.32	38.33	36.76	33.60	31.04
39.0	39.11	37.37	32.89	30.31	32.31	35.37	37.56	35.77	32.32	29.33
42.0	38.36	36.48	31.60	28.53	30.94	34.42	36.90	34.78	30.96	27.51
45.0	37.58	35.53	30.25	26.67	29.52	33.53	36.22	33.85	29.53	25.60
48.0	36.78	34.53	28.86	24.76	28.01	32.61	35.47	32.92	28.02	23.60
51.0	36.01	33.47	27.41	22.74	26.48	31.63	34.67	31.93	26.49	21.58
54.0	35.18	32.46	25.93	20.69	24.88	30.59	33.81	30.91	24.89	19.58
57.0	34.32	31.45	24.42	18.61	23.33	29.52	32.89	29.84	23.31	17.37
60.0	33.42	30.39	22.85	16.48	21.83	28.41	32.00	28.71	21.80	15.31
63.0	32.49	29.30	21.30	14.33	20.32	27.31	31.08	27.63	20.27	13.19
66.0	31.56	28.23	19.76	12.20	18.82	26.25	30.15	26.57	18.76	11.07
69.0	30.61	27.14	18.31	10.04	17.32	25.16	29.21	25.49	17.26	9.131
72.0	29.67	26.09	16.90	7.959	15.89	24.10	28.25	24.46	15.79	7.003
75.0	28.70	25.06	15.50	6.016	14.53	23.07	27.29	23.43	14.42	5.137
78.0	27.70	24.03	14.21	4.157	13.31	22.05	26.32	22.41	13.18	3.392
81.0	26.71	23.00	13.06	2.519	12.22	21.03	25.31	21.42	12.05	1.873
84.0	25.66	22.01	12.03	1.283	11.25	20.04	24.28	20.42	11.06	0.6922
87.0	24.61	20.99	11.14	0.6280	10.36	19.00	23.18	19.37	10.17	0.4376
90.0	23.52	19.97	10.34	0.5881	9.562	18.00	22.09	18.37	9.345	0.4183
93.0	22.40	18.98	9.611	0.6082	8.893	17.12	21.04	17.40	8.672	0.4272
96.0	21.33	18.00	8.998	0.6283	8.345	16.44	20.00	16.50	8.110	0.4361
99.0	20.26	16.01	8.455	0.6535	7.902	14.19	18.80	14.38	7.658	0.4472
102.0	18.84	15.02	7.958	0.6878	7.276	13.84	17.67	13.83	7.150	0.5226
105.0	17.84	14.45	7.002	0.7015	5.933	13.32	16.78	13.36	5.825	0.5305
108.0	16.88	13.73	6.966	0.7151	5.740	12.68	15.93	12.71	5.788	0.5348
111.0	15.95	13.07	6.667	0.7288	5.550	11.67	15.02	11.80	5.406	0.5391
114.0	15.07	12.46	6.352	0.7389	5.118	10.96	13.68	11.27	5.035	0.5434
117.0	14.27	11.91	6.281	0.7639	4.861	10.29	12.97	10.74	4.814	0.5477
120.0	13.53	11.42	5.702	0.7790	4.685	9.713	12.32	10.07	4.734	0.5728
123.0	12.85	10.92	5.313	0.7891	4.569	9.171	11.55	9.400	4.638	0.6020
126.0	12.19	10.42	4.906	0.8043	4.254	8.623	10.65	8.751	4.498	0.6141
129.0	11.56	9.832	4.580	0.8243	4.141	8.080	9.706	8.169	4.371	0.6332
132.0	10.91	8.702	4.273	0.8344	4.151	7.542	8.868	7.691	4.156	0.6732
135.0	10.26	7.746	4.027	0.8444	4.046	6.975	8.119	7.134	4.005	0.6785
138.0	9.631	6.663	3.760	0.8695	3.850	6.557	7.396	6.655	3.814	0.6985
141.0	9.019	6.044	3.514	0.8846	3.644	6.165	6.751	6.078	3.583	0.7336
144.0	8.395	5.512	3.298	0.8996	3.453	5.658	5.864	5.600	3.412	0.7548
147.0	7.787	4.994	3.097	0.9251	3.342	5.336	5.826	5.198	3.251	0.7988
150.0	7.179	4.461	2.891	0.9675	3.197	4.949	5.768	4.796	3.175	0.8693
153.0	6.616	3.994	2.824	0.9712	2.996	4.567	5.320	4.419	2.919	0.8845
156.0	6.048	3.582	2.849	0.9748	2.770	4.200	4.838	4.072	2.683	0.9246
159.0	5.411	3.190	2.840	0.9784	2.524	3.788	4.379	3.745	2.472	0.9285
162.0	4.826	2.823	2.815	0.9820	2.228	3.401	3.873	3.479	2.230	0.9341
165.0	4.259	2.583	2.729	0.9856	1.961	2.979	3.596	3.017	1.984	0.9398
168.0	2.400	2.548	2.584	0.9893	1.730	2.567	2.040	2.514	1.748	0.9423
171.0	2.152	2.447	2.428	0.9929	1.489	2.119	1.808	2.097	1.497	0.9448
174.0	1.876	2.206	2.237	0.9965	1.113	1.662	1.547	1.805	1.249	0.9473
177.0	1.604	1.777	1.565	1.000	1.025	1.045	1.316	1.394	1.025	0.9499
180.0	1.060	1.045	1.025	1.005	1.010	1.020	1.060	1.045	1.025	0.9649
G/C	300.0	330.0								
0.0	42.53	42.46								
3.0	42.51	42.51								
6.0	42.37	42.52								
9.0	42.10	42.39								
12.0	41.63	42.14								
15.0	40.99	41.74								
18.0	40.20	41.24								
21.0	39.30	40.66								
24.0	38.27	40.12								
27.0	37.15	39.61								
30.0	35.94	39.07								

C Range: 0 - 360DEG  
 C Interval: 30.0DEG  
 Test Speed: HIGH  
 Temperature: 25.3DEG  
 Operators: LPC  
 Test Date: 2021-12-09

γ Range: 0 - 180DEG  
 γ Interval: 1.0DEG  
 Test System: EVERFINE GO-2000B\_V1 SYSTEM V2.0.362  
 Humidity: 65.0%  
 Test Distance: 9.200m [K=1.0000]  
 Remarks:

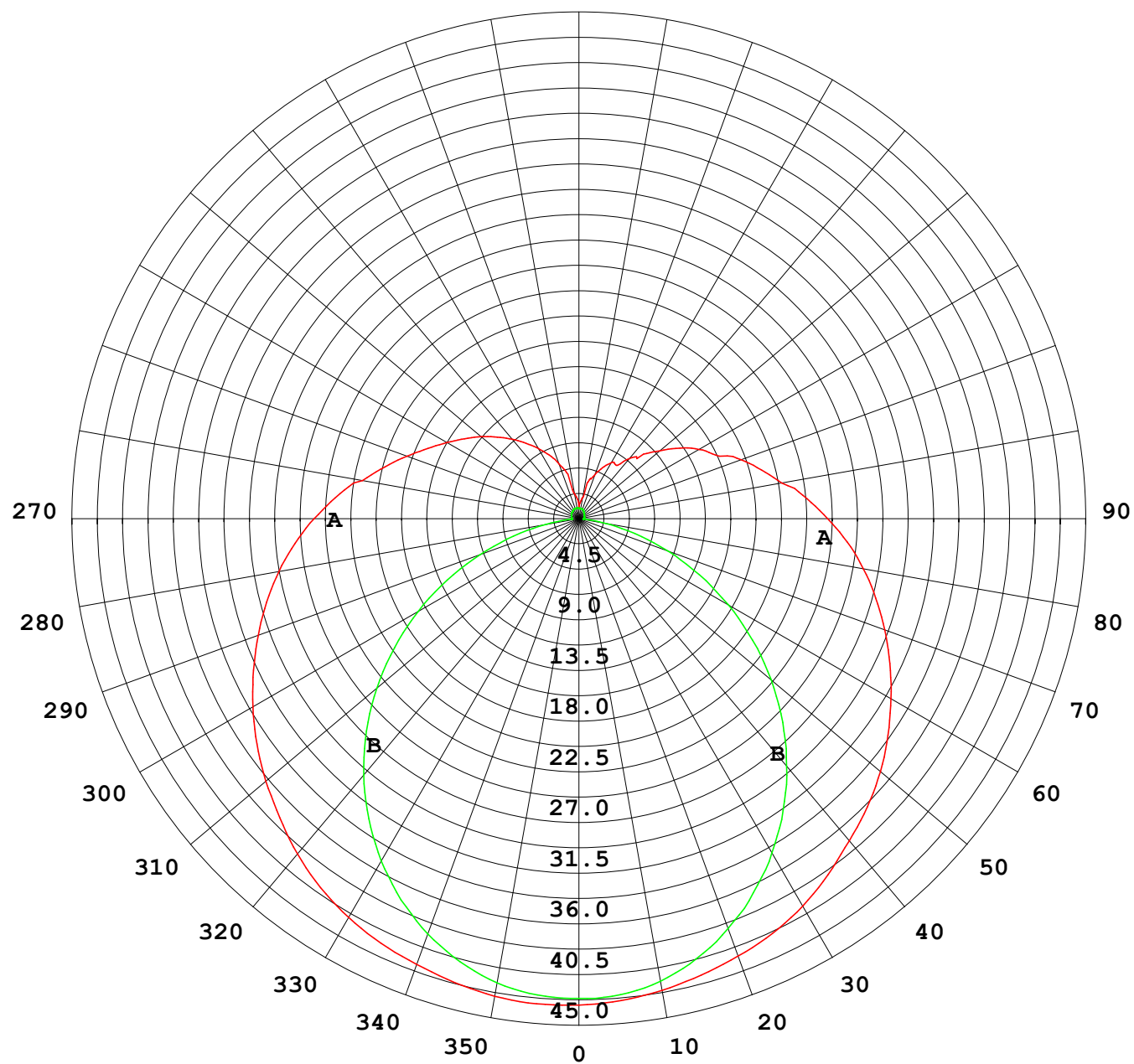
## Photometric Data Table [cd]

33.0	34.69	38.46
36.0	33.45	37.74
39.0	32.24	36.96
42.0	31.01	36.10
45.0	29.76	35.18
48.0	28.47	34.18
51.0	27.07	33.14
54.0	25.61	32.18
57.0	24.13	31.18
60.0	22.60	30.14
63.0	21.07	29.10
66.0	19.57	28.04
69.0	18.13	26.98
72.0	16.72	25.94
75.0	15.35	24.92
78.0	14.09	23.91
81.0	12.93	22.92
84.0	11.89	21.94
87.0	10.99	20.93
90.0	10.19	19.94
93.0	9.451	18.93
96.0	8.823	17.97
99.0	8.281	16.25
102.0	7.817	14.95
105.0	6.889	14.41
108.0	6.719	13.79
111.0	6.641	13.09
114.0	6.431	12.43
117.0	5.939	11.88
120.0	5.562	11.38
123.0	5.236	10.88
126.0	4.884	10.40
129.0	4.562	9.822
132.0	4.250	8.838
135.0	3.879	7.918
138.0	3.587	6.817
141.0	3.346	6.078
144.0	3.135	5.430
147.0	2.929	4.947
150.0	2.704	4.499
153.0	2.691	4.062
156.0	2.697	3.590
159.0	2.689	3.137
162.0	2.613	2.785
165.0	2.563	2.594
168.0	2.482	2.583
171.0	2.376	2.483
174.0	2.184	2.323
177.0	1.496	2.027
180.0	0.9649	1.086

C Range: 0 - 360DEG  
C Interval: 30.0DEG  
Test Speed: HIGH  
Temperature:25.3DEG  
Operators:LPC  
Test Date:2021-12-09

γ Range: 0 - 180DEG  
γ Interval: 1.0DEG  
Test System:EVERFINE GO-2000B\_V1 SYSTEM V2.0.362  
Humidity:65.0%  
Test Distance:9.200m [K=1.0000]  
Remarks:

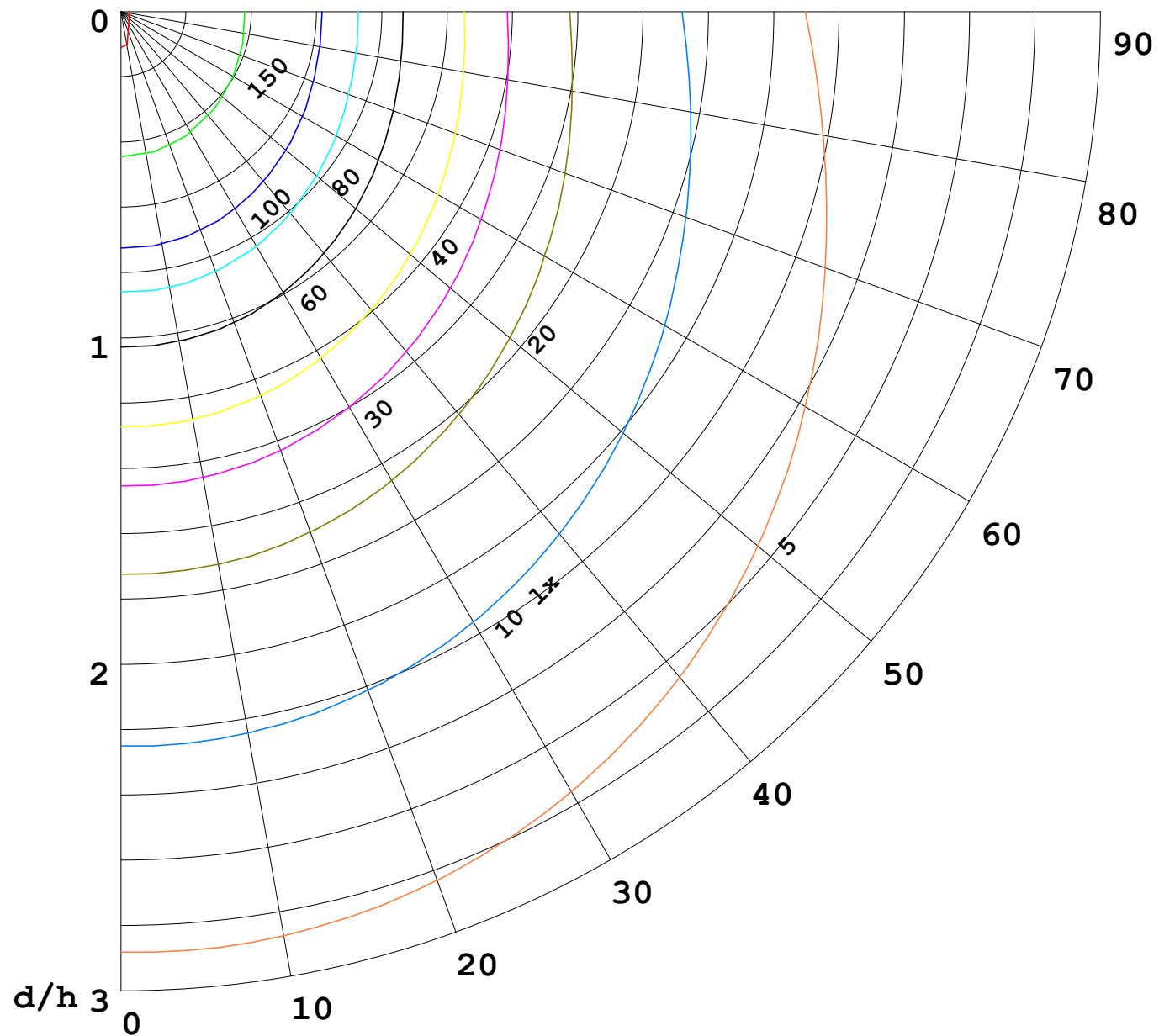
I (cd)





1000 lm

$\kappa = 1$



F = 5000 lm  
 K = 0.7  
 Hcc = 0.0 m  
 Hfc = 0.0 m  
 Eave = 100 lx

	Pcc	Pw	Pfc
—	70	50	30
—	50	30	20

