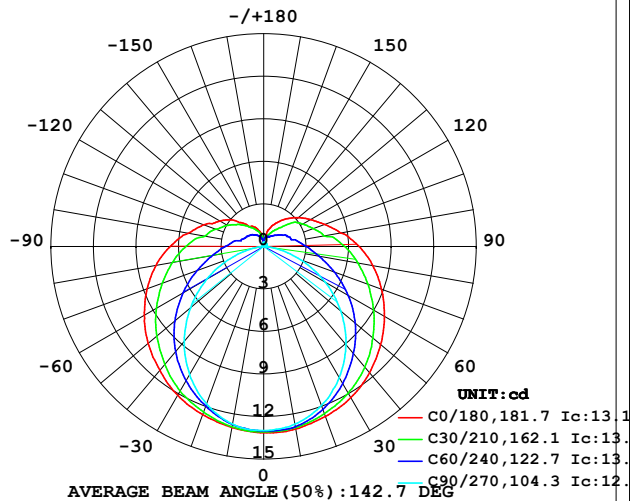


## LUMINAIRE PHOTOMETRIC TEST REPORT

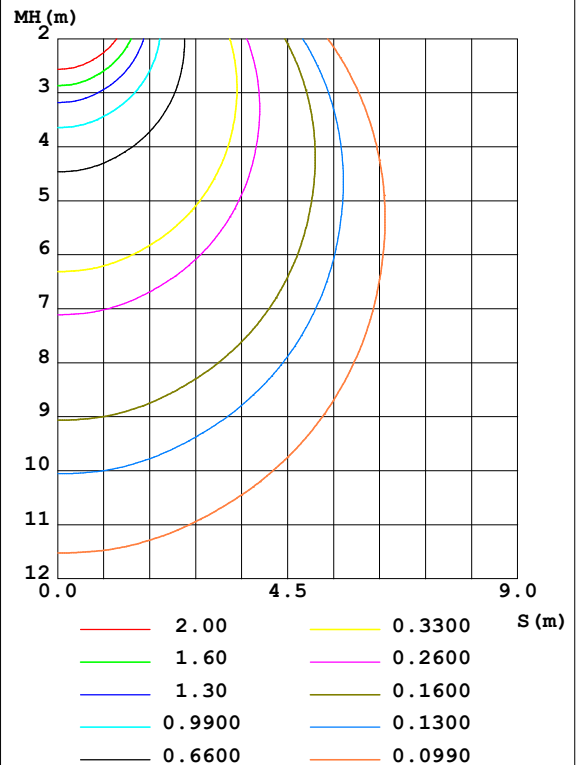
Test:U:48.00V I:0.1169A P:5.611W PF:1.000 Freq:50.00Hz Lamp Flux:63.0261x1 lm		
NAME: SF21-48V-5050-60-RGB-R	TYPE: 硅胶	WEIGHT:
SPEC.:	DIM.: 28mm*11.5mm	SERIAL No.:2021120907
MFR.: OLYMPIA	SUR.:1*0.016	Shielding Angle:

DATA OF LAMP		PHOTOMETRIC DATA Eff: 11.23 lm/W			
MODEL	5050	I <sub>max</sub> (cd)	13.15	S/MH(C0/180)	1.38
NOMINAL POWER(W)	3.3	LOR(%)	100.0	S/MH(C90/270)	1.20
RATED VOLTAGE(V)	48	TOTAL FLUX(lm)	63.026	η UP,DN(C0-180)	10.9,39.3
NOMINAL FLUX(lm)	63.0261	CIE CLASS	SEMI-D.	η UP,DN(C180-360)	10.8,39.1
LAMPS INSIDE	1	η up(%)	21.7	CIBSE SHR NOM	1.50
TEST VOLTAGE(V)	48	η down(%)	78.3	CIBSE SHR MAX	1.55

LUMINOUS INTENSITY DISTRIBUTION DIAGRAM



C0 PLANE ISOLUX DIAGRAM (UNIT:lx)



C Range: 0 - 360DEG  
C Interval: 30.0DEG  
Test Speed: HIGH  
Temperature:25.3DEG  
Operators:LPC  
Test Date:2021-12-09

γ Range: 0 - 180DEG  
γ Interval: 1.0DEG  
Test System:EVERFINE GO-2000B\_V1 SYSTEM V2.0.362  
Humidity:65.0%  
Test Distance:9.200m [K=1.0000]  
Remarks:

## ZONAL FLUX DIAGRAM

## ZONAL FLUX DIAGRAM:

$\gamma$	C0	C45	C90	C135	C180	C225	C270	C315	$\gamma$	$\Phi$ zone	$\Phi$ total	%lum, lamp
10	13.07	12.94	12.73	12.70	12.97	12.83	12.73	12.83	0- 10	1.234	1.234	1.96,1.96
20	12.76	12.38	11.93	12.10	12.61	12.20	11.81	12.23	10- 20	3.554	4.789	7.6,7.6
30	12.31	11.54	10.68	11.26	12.13	11.36	10.45	11.38	20- 30	5.468	10.26	16.3,16.3
40	11.63	10.48	9.025	10.14	11.40	10.27	8.721	10.36	30- 40	6.801	17.06	27.1,27.1
50	10.77	9.238	7.109	8.881	10.64	9.011	6.741	9.197	40- 50	7.456	24.51	38.9,38.9
60	9.836	7.908	4.998	7.506	9.719	7.651	4.640	7.887	50- 60	7.434	31.95	50.7,50.7
70	8.851	6.574	2.797	6.147	8.744	6.314	2.515	6.573	60- 70	6.821	38.77	61.5,61.5
80	7.821	5.355	0.8531	4.961	7.713	5.108	0.6697	5.375	70- 80	5.828	44.60	70.8,70.8
90	6.731	4.360	0.1908	3.990	6.603	4.101	0.0854	4.385	80- 90	4.779	49.38	78.3,78.3
100	5.536	3.342	0.1637	3.094	5.407	3.169	0.0804	3.373	90-100	3.883	53.26	84.5,84.5
110	4.570	2.849	0.1776	2.525	4.492	2.571	0.1255	2.854	100-110	2.986	56.24	89.2,89.2
120	3.810	2.395	0.2011	2.045	3.598	2.192	0.1317	2.400	110-120	2.335	58.58	92.9,92.9
130	3.172	1.935	0.2206	1.708	2.919	1.835	0.1370	1.973	120-130	1.770	60.35	95.8,95.8
140	2.564	1.357	0.2362	1.473	2.090	1.505	0.1457	1.349	130-140	1.217	61.57	97.7,97.7
150	1.976	1.000	0.2729	1.186	1.658	1.211	0.2010	1.032	140-150	0.7620	62.33	98.9,98.9
160	1.413	0.7969	0.2839	0.8620	1.306	0.9348	0.2274	0.7842	150-160	0.4473	62.78	99.6,99.6
170	0.6034	0.6409	0.2965	0.5578	0.5776	0.6082	0.2512	0.6684	160-170	0.2038	62.98	99.9,99.9
180	0.3166	0.3166	0.2915	0.2965	0.3367	0.3317	0.2865	0.2915	170-180	0.0462	63.03	100,100
DEG	LUMINOUS INTENSITY:cd									UNIT:lm		

Conical surface Flux(90deg): 20.746 lm

%lum = 32.9%

%lamp = 32.9%

Conical surface Flux(120deg): 31.947 lm

%lum = 50.7%

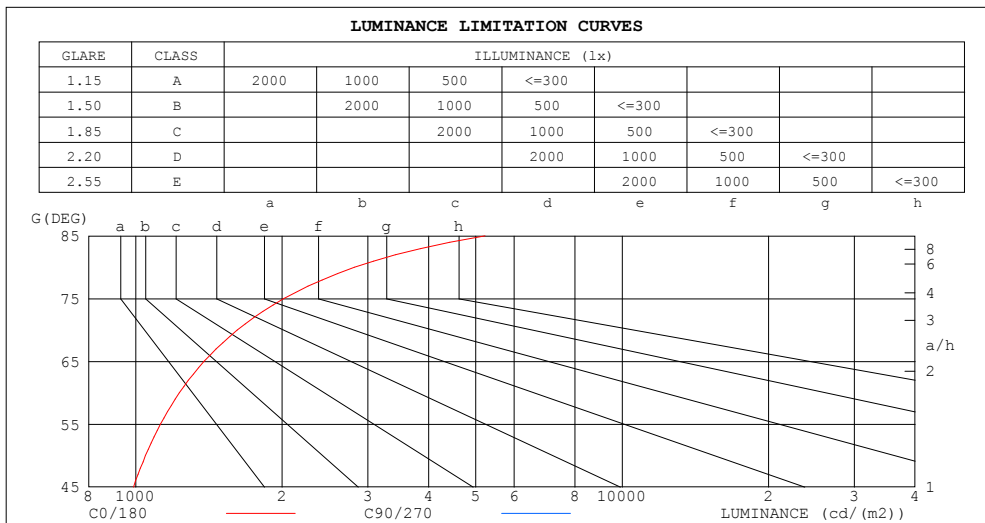
%lamp = 50.7%

C Range: 0 - 360DEG  
 C Interval: 30.0DEG  
 Test Speed: HIGH  
 Temperature:25.3DEG  
 Operators:LPC  
 Test Date:2021-12-09

$\gamma$  Range: 0 - 180DEG  
 $\gamma$  Interval: 1.0DEG  
 Test System:EVERFINE GO-2000B\_V1 SYSTEM V2.0.362  
 Humidity:65.0%  
 Test Distance:9.200m [K=1.0000]  
 Remarks:

## LUMINANCE LIMITATION CURVES

Test:U:48.00V I:0.1169A P:5.611W PF:1.000 Freq:50.00Hz Lamp Flux:63.0261x1 lm		
NAME: SF21-48V-5050-60-RGB-R	TYPE: 硅胶	WEIGHT:
SPEC.:	DIM.: 28mm*11.5mm	SERIAL No.:2021120907
MFR.: OLYMPIA	SUR.:1*0.016	Shielding Angle:



LUMINANCE cd/(m2)		
G (DEG)	C0/180	C90/270
85	5223	208
80	2815	307
75	2014	424
70	1617	511
65	1381	577
60	1230	625
55	1124	662
50	1047	691
45	990	716

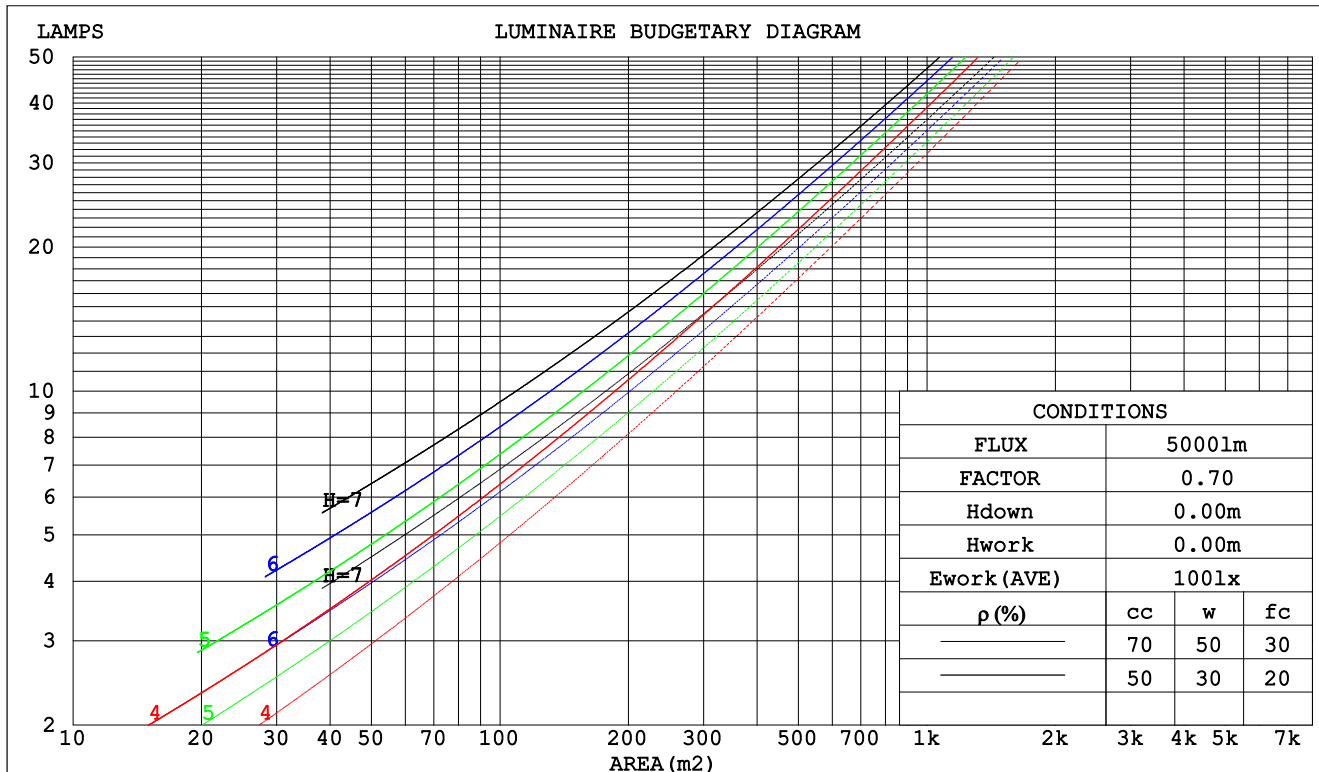
C Range: 0 - 360DEG  
C Interval: 30.0DEG  
Test Speed: HIGH  
Temperature:25.3DEG  
Operators:LPC  
Test Date:2021-12-09

$\gamma$  Range: 0 - 180DEG  
 $\gamma$  Interval: 1.0DEG  
Test System:EVERFINE GO-2000B\_V1 SYSTEM V2.0.362  
Humidity:65.0%  
Test Distance:9.200m [K=1.0000]  
Remarks:

## CU AND LUMINAIRE BUDGETARY ESTIMATE DIAGRAM

Test:U:48.00V I:0.1169A P:5.611W PF:1.000 Freq:50.00Hz Lamp Flux:63.0261x1 lm		
NAME: SF21-48V-5050-60-RGB-R	TYPE: 硅胶	WEIGHT:
SPEC.:	DIM.: 28mm*11.5mm	SERIAL No.:2021120907
MFR.: OLYMPIA	SUR.:1*0.016	Shielding Angle:

pcc	80%			70%			50%			30%			10%			0
pw	50%	30%	10%	50%	30%	10%	50%	30%	10%	50%	30%	10%	50%	30%	10%	0
pfc	20%			20%			20%			20%			20%			0
RCR	RCR:Room Cavity Ratio			Coefficients of Utilization(CU)												
0.0	1.14	1.14	1.14	1.09	1.09	1.09	.99	.99	.99	.90	.90	.90	.82	.82	.82	.78
1.0	.95	.89	.85	.90	.86	.81	.82	.78	.75	.74	.71	.68	.67	.65	.63	.59
2.0	.81	.73	.67	.77	.70	.64	.70	.64	.59	.63	.59	.55	.57	.54	.50	.47
3.0	.70	.61	.54	.67	.59	.52	.61	.54	.49	.55	.50	.45	.50	.45	.42	.38
4.0	.62	.52	.45	.59	.50	.44	.54	.46	.41	.49	.43	.38	.44	.39	.35	.32
5.0	.55	.45	.38	.52	.44	.37	.48	.40	.35	.43	.37	.32	.39	.34	.30	.27
6.0	.49	.40	.33	.47	.38	.32	.43	.35	.30	.39	.33	.28	.36	.30	.26	.24
7.0	.44	.35	.29	.42	.34	.28	.39	.32	.26	.35	.29	.25	.32	.27	.23	.21
8.0	.40	.31	.25	.38	.30	.25	.35	.28	.23	.32	.26	.22	.30	.24	.20	.18
9.0	.37	.28	.23	.35	.27	.22	.32	.26	.21	.30	.24	.20	.27	.22	.18	.16
10.0	.34	.26	.20	.32	.25	.20	.30	.23	.19	.28	.22	.18	.25	.20	.17	.15



C Range: 0 - 360DEG  
 C Interval: 30.0DEG  
 Test Speed: HIGH  
 Temperature:25.3DEG  
 Operators:LPC  
 Test Date:2021-12-09

γ Range: 0 - 180DEG  
 γ Interval: 1.0DEG  
 Test System:EVERFINE GO-2000B\_V1 SYSTEM V2.0.362  
 Humidity:65.0%  
 Test Distance:9.200m [K=1.0000]  
 Remarks:

## WEC AND CCEC

Test:U:48.00V I:0.1169A P:5.611W PF:1.000 Freq:50.00Hz Lamp Flux:63.0261x1 lm		
NAME: SF21-48V-5050-60-RGB-R	TYPE: 硅胶	WEIGHT:
SPEC.:	DIM.: 28mm*11.5mm	SERIAL No.:2021120907
MFR.: OLYMPIA	SUR.:1*0.016	Shielding Angle:

pcc	80%			70%			50%			30%			10%			0	
pw	50%	30%	10%	50%	30%	10%	50%	30%	10%	50%	30%	10%	50%	30%	10%	0	
pfc	20%			20%			20%			20%			20%			0	
RCR	RCR:Room Cavity Ratio						Wall Exitance Coefficients(WEC)										
0.0																	
1.0	.385	.219	.069	.371	.212	.067	.345	.198	.063	.321	.185	.059	.299	.174	.056		
2.0	.332	.182	.056	.320	.176	.054	.296	.165	.051	.274	.154	.048	.254	.144	.045		
3.0	.295	.157	.047	.283	.152	.046	.262	.142	.043	.242	.133	.041	.224	.124	.038		
4.0	.265	.138	.040	.255	.133	.039	.235	.125	.037	.218	.117	.035	.201	.109	.033		
5.0	.241	.123	.036	.232	.119	.035	.214	.111	.033	.198	.104	.031	.182	.097	.029		
6.0	.221	.111	.032	.212	.107	.031	.196	.100	.029	.181	.094	.028	.167	.088	.026		
7.0	.203	.101	.029	.196	.097	.028	.181	.091	.026	.167	.086	.025	.154	.080	.024		
8.0	.189	.092	.026	.182	.089	.025	.168	.084	.024	.155	.079	.023	.143	.074	.021		
9.0	.176	.085	.024	.169	.082	.023	.157	.078	.022	.145	.073	.021	.134	.068	.020		
10.0	.165	.079	.022	.158	.077	.021	.147	.072	.020	.136	.068	.019	.126	.063	.018		

pcc	80%			70%			50%			30%			10%			0	
pw	50%	30%	10%	50%	30%	10%	50%	30%	10%	50%	30%	10%	50%	30%	10%	0	
pfc	20%			20%			20%			20%			20%			0	
RCR	RCR:Room Cavity Ratio						Ceiling Cavity Exitance Coefficients(CCEC)										
0.0	.355	.355	.355	.304	.304	.304	.207	.207	.207	.119	.119	.119	.038	.038	.038		
1.0	.352	.322	.295	.301	.276	.254	.206	.190	.175	.119	.110	.102	.038	.035	.033		
2.0	.345	.299	.261	.296	.258	.225	.203	.178	.157	.117	.104	.092	.037	.034	.030		
3.0	.338	.283	.239	.289	.244	.207	.199	.170	.145	.115	.099	.086	.037	.032	.028		
4.0	.330	.270	.225	.283	.234	.196	.195	.163	.138	.113	.095	.081	.036	.031	.027		
5.0	.322	.261	.215	.277	.226	.187	.191	.158	.132	.110	.093	.078	.036	.030	.026		
6.0	.315	.253	.208	.271	.219	.181	.187	.153	.128	.108	.090	.076	.035	.029	.025		
7.0	.308	.246	.203	.265	.214	.177	.183	.150	.125	.106	.088	.075	.034	.029	.025		
8.0	.301	.241	.199	.259	.209	.174	.179	.147	.123	.104	.087	.073	.034	.028	.024		
9.0	.295	.236	.196	.254	.205	.171	.176	.144	.122	.103	.085	.072	.033	.028	.024		
10.0	.289	.232	.194	.249	.201	.169	.173	.142	.120	.101	.084	.072	.033	.028	.024		

C Range: 0 - 360DEG  
 C Interval: 30.0DEG  
 Test Speed: HIGH  
 Temperature:25.3DEG  
 Operators:LPC  
 Test Date:2021-12-09

γ Range: 0 - 180DEG  
 γ Interval: 1.0DEG  
 Test System:EVERFINE GO-2000B\_V1 SYSTEM V2.0.362  
 Humidity:65.0%  
 Test Distance:9.200m [K=1.0000]  
 Remarks:

UGR(Unified Glare Rating) Table

Test:U:48.00V I:0.1169A P:5.611W PF:1.000 Freq:50.00Hz Lamp Flux:63.0261x1 lm										
NAME: SF21-48V-5050-60-RGB-R					TYPE: 硅胶			WEIGHT:		
SPEC.:					DIM.: 28mm*11.5mm			SERIAL No.:2021120907		
MFR.: OLYMPIA					SUR.:1*0.016			Shielding Angle:		
ceiling/cavity	0.7	0.7	0.5	0.5	0.3	0.7	0.7	0.5	0.5	0.3
walls	0.5	0.3	0.5	0.3	0.3	0.5	0.3	0.5	0.3	0.3
working plane	0.2	0.2	0.2	0.2	0.2	0.2	0.2	0.2	0.2	0.2
Room dimensions	Viewed crosswise					Viewed endwise				
x = 2H y = 2H	22.0	23.4	22.6	23.9	24.6	19.6	20.9	20.1	21.4	22.1
3H	24.8	26.0	25.4	26.6	27.3	21.0	22.2	21.5	22.8	23.4
4H	26.4	27.5	27.0	28.1	28.8	21.5	22.6	22.1	23.2	23.9
6H	28.1	29.2	28.7	29.8	30.5	21.8	22.9	22.4	23.5	24.2
8H	29.0	30.1	29.7	30.7	31.5	21.9	22.9	22.5	23.6	24.3
12H	30.2	31.2	30.8	31.8	32.6	21.9	22.9	22.5	23.5	24.3
4H 2H	22.6	23.7	23.2	24.3	25.0	20.8	22.0	21.4	22.6	23.3
3H	25.6	26.6	26.2	27.3	28.0	22.5	23.6	23.2	24.2	25.0
4H	27.3	28.3	28.0	29.0	29.7	23.3	24.2	24.0	24.9	25.7
6H	29.3	30.1	30.0	30.8	31.6	23.9	24.7	24.6	25.4	26.2
8H	30.4	31.2	31.1	31.9	32.7	24.1	24.9	24.8	25.6	26.4
12H	31.6	32.3	32.3	33.1	33.9	24.2	24.9	24.9	25.6	26.5
8H 4H	27.7	28.5	28.4	29.2	30.0	24.5	25.3	25.2	26.0	26.9
6H	29.9	30.6	30.7	31.3	32.2	25.6	26.2	26.3	27.0	27.8
8H	31.2	31.8	32.0	32.6	33.5	26.0	26.6	26.8	27.4	28.3
12H	32.8	33.3	33.5	34.0	35.0	26.4	26.9	27.2	27.7	28.6
12H 4H	27.7	28.4	28.4	29.1	30.0	25.0	25.7	25.7	26.4	27.3
6H	30.1	30.6	30.8	31.4	32.3	26.3	26.9	27.0	27.6	28.5
8H	31.5	32.0	32.2	32.8	33.7	26.9	27.5	27.7	28.2	29.1
Variations with the observer position at spacings:										
S = 1.0H	+ 0.1 / - 0.1					+ 0.1 / - 0.1				
1.5H	+ 0.2 / - 0.3					+ 0.2 / - 0.3				
2.0H	+ 0.2 / - 0.3					+ 0.3 / - 0.4				

CIE Pub.117, 63.03 lm Total Lamp Luminous Flux Correct (8log(F/F0) = -9.6)

C Range: 0 - 360DEG  
C Interval: 30.0DEG  
Test Speed: HIGH  
Temperature:25.3DEG  
Operators:LPC  
Test Date:2021-12-09

γ Range: 0 - 180DEG  
γ Interval: 1.0DEG  
Test System:EVERFINE GO-2000B\_V1 SYSTEM V2.0.362  
Humidity:65.0%  
Test Distance:9.200m [K=1.0000]  
Remarks:

## UTILIZATION FACTORS TABLE

Test:U:48.00V I:0.1169A P:5.611W PF:1.000 Freq:50.00Hz Lamp Flux:63.0261x1 lm		
NAME: SF21-48V-5050-60-RGB-R	TYPE: 硅胶	WEIGHT:
SPEC.:	DIM.: 28mm*11.5mm	SERIAL No.:2021120907
MFR.: OLYMPIA	SUR.:1*0.016	Shielding Angle:

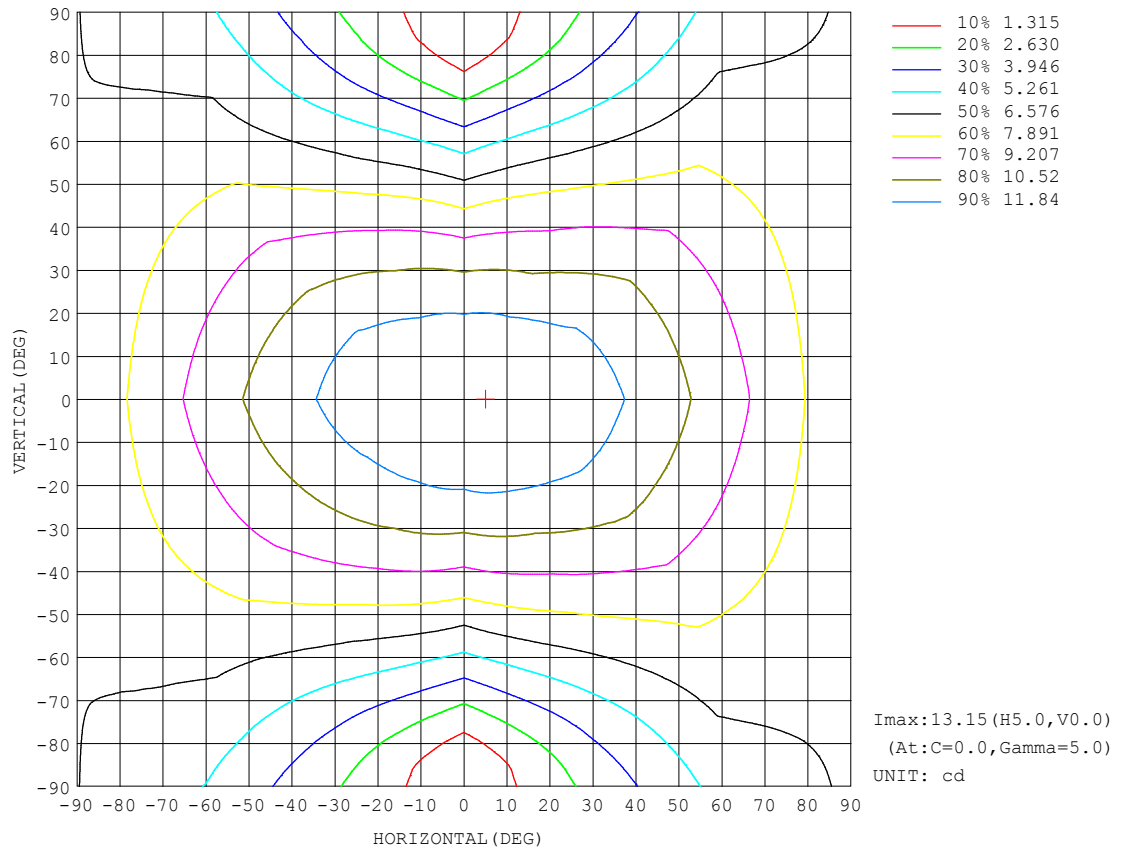
REFLECTANCE										
Ceiling	0.8	0.8	0.8	0.7	0.7	0.7	0.5	0.5	0.5	0
Walls	0.7	0.5	0.3	0.7	0.5	0.3	0.7	0.5	0.3	0
Working plane	0.2	0.2	0.2	0.2	0.2	0.2	0.2	0.2	0.2	0
ROOM INDEX	UTILIZATION FACTORS (PERCENT) $k(RI) \times RCR = 5$									
$k = 0.60$	47	34	27	45	34	27	43	33	26	20
0.80	56	43	35	54	42	34	51	40	33	25
1.00	63	50	42	61	49	41	58	49	40	31
1.25	70	58	49	68	56	48	63	53	46	36
1.50	75	63	54	73	61	53	67	58	51	40
2.00	83	72	63	79	69	62	73	65	58	46
2.50	87	77	69	84	74	67	77	69	63	50
3.00	91	82	74	87	79	72	80	73	67	53
4.00	96	88	81	92	84	78	84	78	73	58
5.00	99	92	86	94	88	83	86	81	77	61
ROOM INDEX	UF (total)									Direct
According to DIN EN 13032-2 2004			Suspended					SHRNOM = 1.25		

C Range: 0 - 360DEG  
 C Interval: 30.0DEG  
 Test Speed: HIGH  
 Temperature:25.3DEG  
 Operators:LPC  
 Test Date:2021-12-09

γ Range: 0 - 180DEG  
 γ Interval: 1.0DEG  
 Test System:EVERFINE GO-2000B\_V1 SYSTEM V2.0.362  
 Humidity:65.0%  
 Test Distance:9.200m [K=1.0000]  
 Remarks:

## ISOCANDELA DIAGRAM

Test:U:48.00V I:0.1169A P:5.611W PF:1.000 Freq:50.00Hz Lamp Flux:63.0261x1 lm		
NAME: SF21-48V-5050-60-RGB-R	TYPE: 硅胶	WEIGHT:
SPEC.:	DIM.: 28mm*11.5mm	SERIAL No.:2021120907
MFR.: OLYMPIA	SUR.:1*0.016	Shielding Angle:



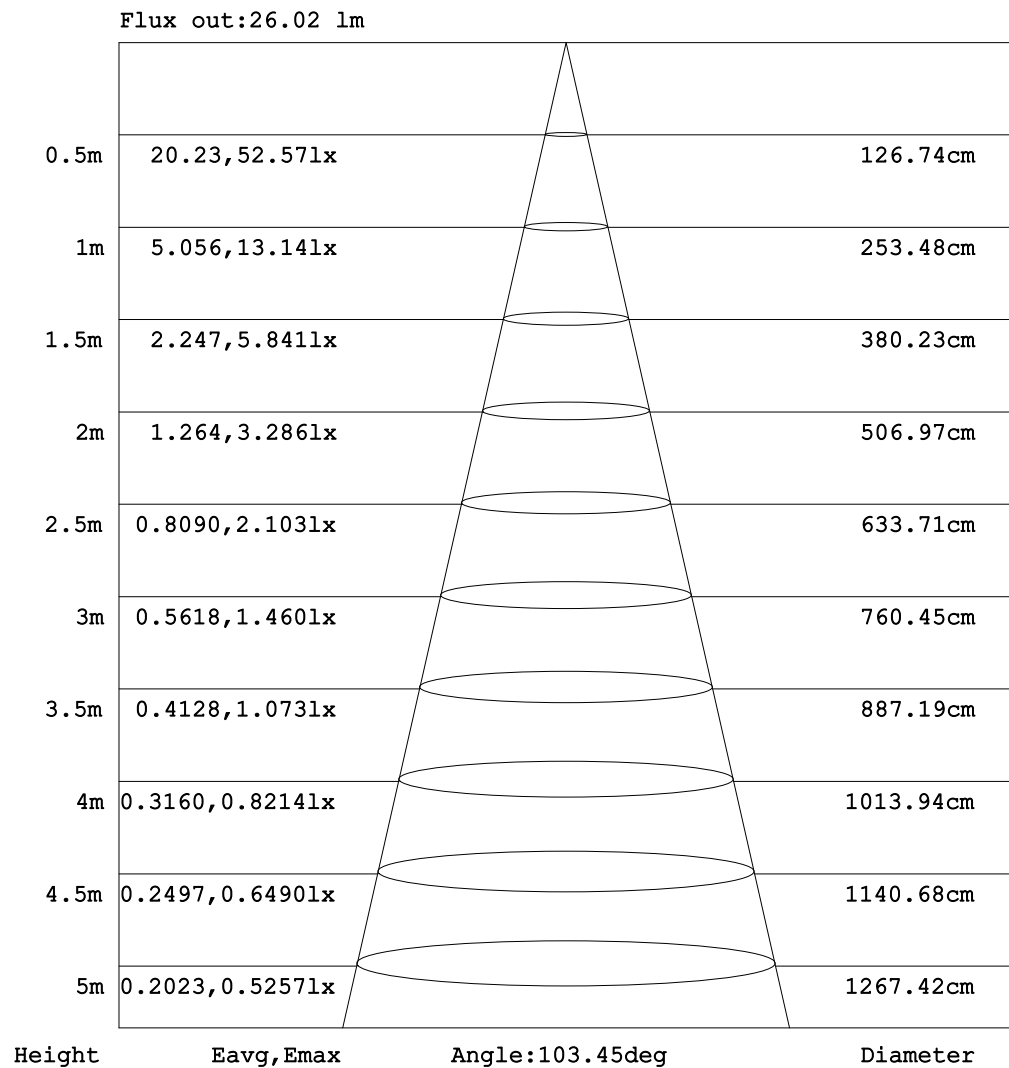
C Range: 0 - 360DEG  
C Interval: 30.0DEG  
Test Speed: HIGH  
Temperature:25.3DEG  
Operators:LPC  
Test Date:2021-12-09

$\gamma$  Range: 0 - 180DEG  
 $\gamma$  Interval: 1.0DEG  
Test System:EVERFINE GO-2000B\_V1 SYSTEM V2.0.362  
Humidity:65.0%  
Test Distance:9.200m [K=1.0000]  
Remarks:



## AAI Figure

Test:U:48.00V I:0.1169A P:5.611W PF:1.000 Freq:50.00Hz Lamp Flux:63.0261x1 lm		
NAME: SF21-48V-5050-60-RGB-R	TYPE: 硅胶	WEIGHT:
SPEC.:	DIM.: 28mm*11.5mm	SERIAL No.:2021120907
MFR.: OLYMPIA	SUR.:1*0.016	Shielding Angle:



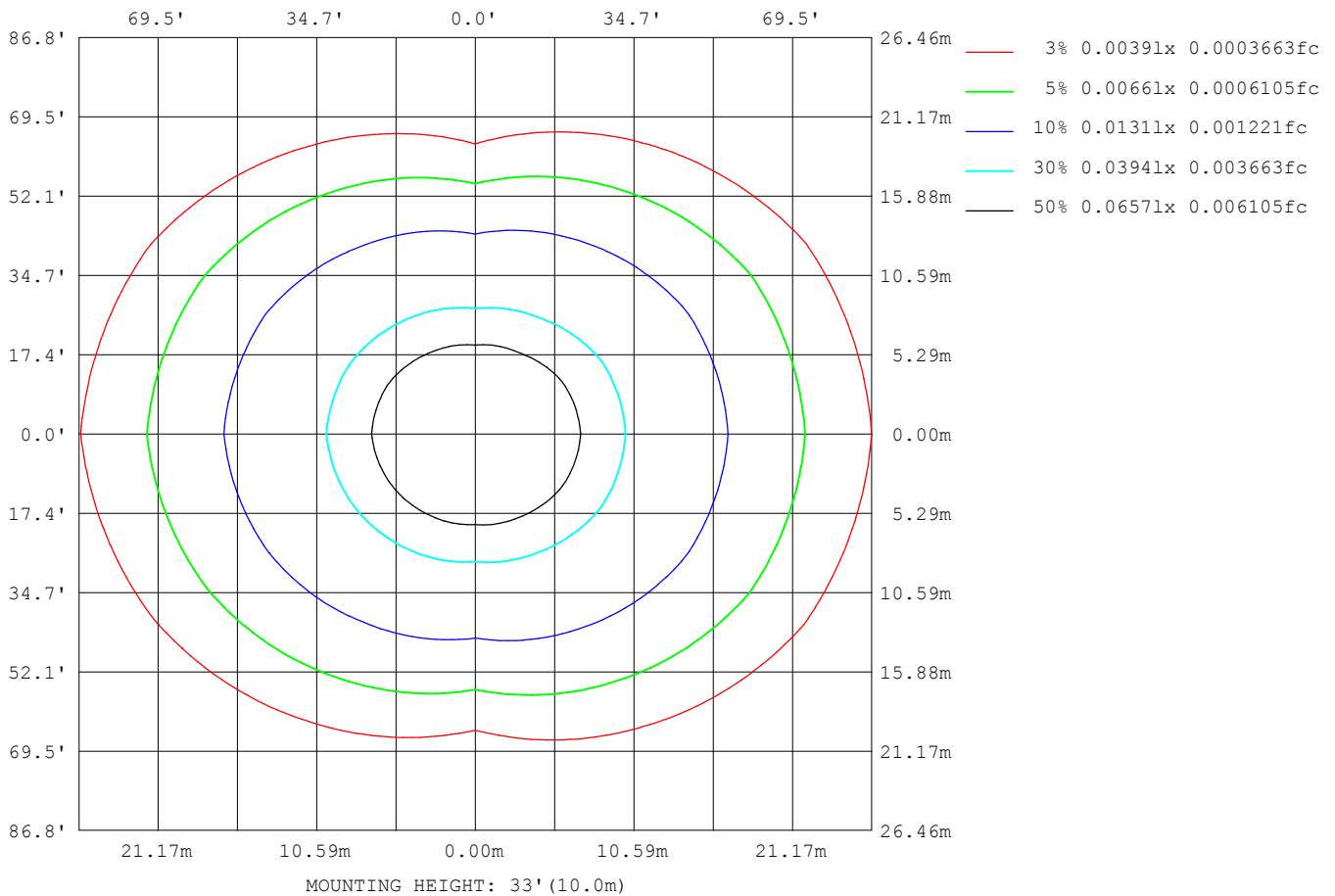
Note: The Curves indicate the illuminated area and the average illumination when the luminaire is at different distance.

C Range: 0 - 360DEG  
 C Interval: 30.0DEG  
 Test Speed: HIGH  
 Temperature: 25.3DEG  
 Operators: LPC  
 Test Date: 2021-12-09

γ Range: 0 - 180DEG  
 γ Interval: 1.0DEG  
 Test System: EVERFINE GO-2000B\_V1 SYSTEM V2.0.362  
 Humidity: 65.0%  
 Test Distance: 9.200m [K=1.0000]  
 Remarks:

## ISOLUX DIAGRAM

Test:U:48.00V I:0.1169A P:5.611W PF:1.000 Freq:50.00Hz Lamp Flux:63.0261x1 lm		
NAME: SF21-48V-5050-60-RGB-R	TYPE: 硅胶	WEIGHT:
SPEC.:	DIM.: 28mm*11.5mm	SERIAL No.:2021120907
MFR.: OLYMPIA	SUR.:1*0.016	Shielding Angle:



C Range: 0 - 360DEG  
C Interval: 30.0DEG  
Test Speed: HIGH  
Temperature:25.3DEG  
Operators:LPC  
Test Date:2021-12-09

$\gamma$  Range: 0 - 180DEG  
 $\gamma$  Interval: 1.0DEG  
Test System:EVERFINE GO-2000B\_V1 SYSTEM V2.0.362  
Humidity:65.0%  
Test Distance:9.200m [K=1.0000]  
Remarks:

## LED Avg.L Report

Test:U:48.00V I:0.1169A P:5.611W PF:1.000 Freq:50.00Hz Lamp Flux:63.0261x1 lm		
NAME: SF21-48V-5050-60-RGB-R	TYPE:硅胶	WEIGHT:
SPEC.:	DIM.: 28mm*11.5mm	SERIAL No.:2021120907
MFR.: OLYMPIA	SUR.:1*0.016	Shielding Angle:

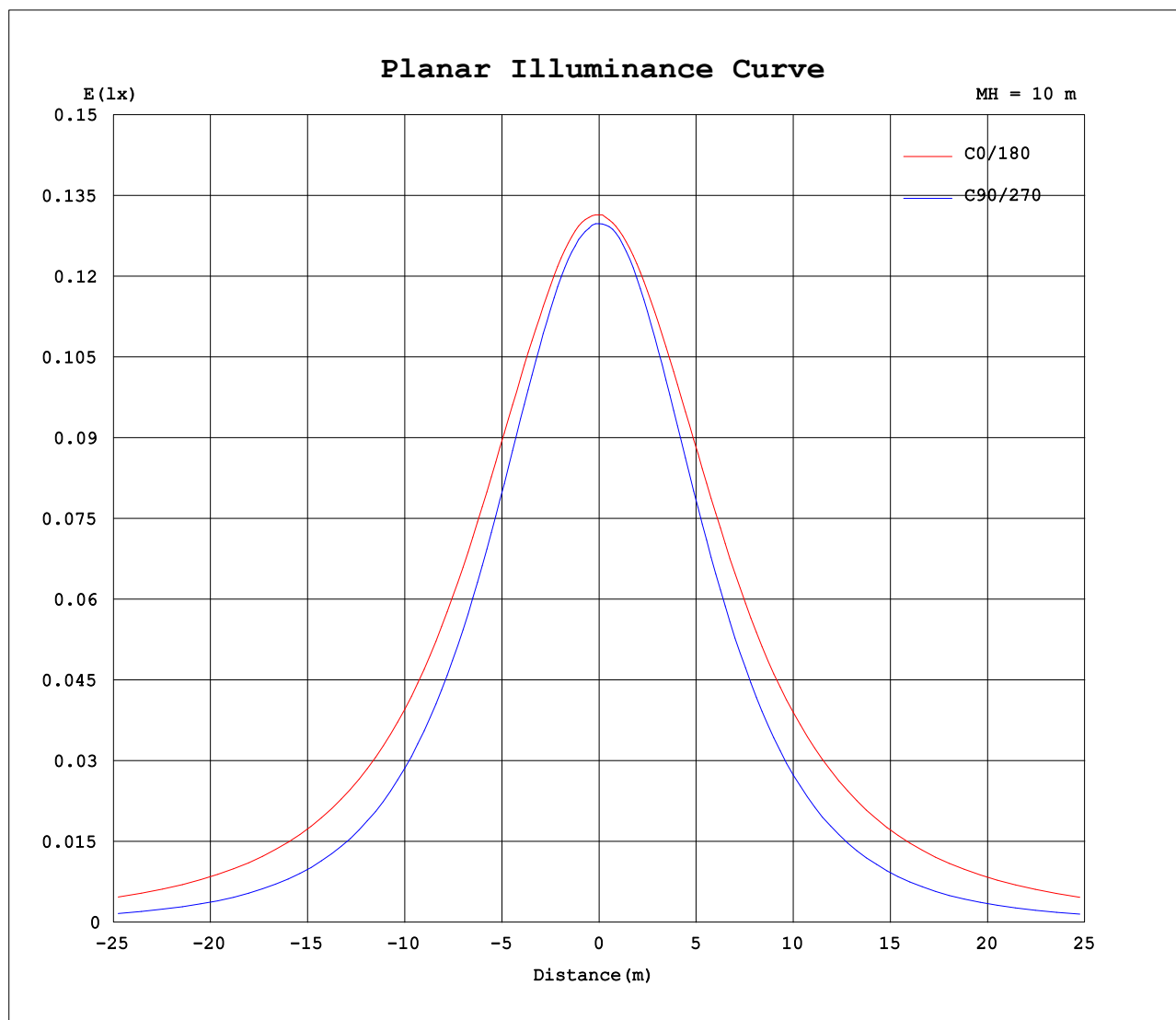
AvgL	cd/m2
L_0~180 (65) av	1374
L_0~180 (75) av	2001
L_0~180 (85) av	5182
L_90~270 (65) av	552
L_90~270 (75) av	396
L_90~270 (85) av	151
L_45 (65) av	1054
L_45 (75) av	1418
L_45 (85) av	3448

Standard: GB/T 29293-2012

C Range: 0 - 360DEG  
C Interval: 30.0DEG  
Test Speed: HIGH  
Temperature:25.3DEG  
Operators:LPC  
Test Date:2021-12-09

γ Range: 0 - 180DEG  
γ Interval: 1.0DEG  
Test System:EVERFINE GO-2000B\_V1 SYSTEM V2.0.362  
Humidity:65.0%  
Test Distance:9.200m [K=1.0000]  
Remarks:

## Planar Illuminance Curve



C Range: 0 - 360DEG  
C Interval: 30.0DEG  
Test Speed: HIGH  
Temperature: 25.3DEG  
Operators: LPC  
Test Date: 2021-12-09

$\gamma$  Range: 0 - 180DEG  
 $\gamma$  Interval: 1.0DEG  
Test System: EVERFINE GO-2000B\_V1 SYSTEM V2.0.362  
Humidity: 65.0%  
Test Distance: 9.200m [K=1.0000]  
Remarks:

## LUMINOUS DISTRIBUTION INTENSITY DATA

Test:U:48.00V I:0.1169A P:5.611W PF:1.000 Freq:50.00Hz Lamp Flux:63.0261x1 lm		
NAME: SF21-48V-5050-60-RGB-R	TYPE: 硅胶	WEIGHT:
SPEC.:	DIM.: 28mm*11.5mm	SERIAL No.:2021120907
MFR.: OLYMPIA	SUR.:1*0.016	Shielding Angle:

Table--1

UNIT: cd

C (DEG) γ (DEG)	0	30	60	90	120	150	180	210	240	270	300	330						
0	13.1	13.1	13.0	13.0	12.9	12.9	13.1	13.1	13.0	13.0	12.9	12.9						
5	13.2	13.1	13.0	12.9	12.9	12.8	13.1	13.1	12.9	13.0	12.9	12.9						
10	13.1	13.0	12.9	12.7	12.7	12.7	13.0	12.9	12.7	12.7	12.8	12.9						
15	12.9	12.8	12.6	12.4	12.4	12.5	12.8	12.7	12.4	12.3	12.5	12.7						
20	12.8	12.5	12.2	11.9	12.0	12.2	12.6	12.4	12.0	11.8	12.0	12.4						
25	12.6	12.3	11.7	11.4	11.5	11.9	12.4	12.1	11.5	11.2	11.5	12.2						
30	12.3	11.9	11.2	10.7	11.0	11.5	12.1	11.8	10.9	10.4	10.9	11.9						
35	12.0	11.6	10.5	9.89	10.4	11.1	11.8	11.4	10.3	9.62	10.2	11.5						
40	11.6	11.1	9.85	9.02	9.70	10.6	11.4	10.9	9.67	8.72	9.61	11.1						
45	11.2	10.6	9.17	8.10	8.97	10.1	11.0	10.3	8.95	7.75	8.97	10.6						
50	10.8	10.0	8.43	7.11	8.18	9.58	10.6	9.84	8.18	6.74	8.29	10.1						
55	10.3	9.52	7.66	6.07	7.36	9.04	10.2	9.31	7.37	5.72	7.53	9.57						
60	9.84	8.95	6.86	5.00	6.58	8.44	9.72	8.74	6.57	4.64	6.75	9.03						
65	9.34	8.38	6.07	3.90	5.79	7.85	9.24	8.16	5.79	3.57	5.97	8.47						
70	8.85	7.83	5.32	2.80	5.01	7.28	8.74	7.61	5.02	2.51	5.23	7.92						
75	8.34	7.28	4.60	1.76	4.29	6.74	8.24	7.06	4.29	1.52	4.53	7.39						
80	7.82	6.74	3.97	0.85	3.69	6.24	7.71	6.55	3.67	0.67	3.88	6.87						
85	7.28	6.24	3.44	0.29	3.18	5.73	7.17	6.02	3.17	0.13	3.35	6.37						
90	6.73	5.71	3.01	0.19	2.75	5.23	6.60	5.49	2.71	0.09	2.92	5.85						
95	6.18	5.20	2.65	0.16	2.44	4.77	6.05	5.00	2.38	0.08	2.56	5.35						
100	5.54	4.30	2.39	0.16	2.22	3.97	5.41	4.19	2.15	0.08	2.29	4.46						
105	5.04	4.06	2.00	0.17	1.67	3.76	4.93	3.95	1.65	0.12	1.92	4.17						
110	4.57	3.73	1.97	0.18	1.62	3.43	4.49	3.57	1.57	0.13	1.85	3.86						
115	4.16	3.43	1.82	0.18	1.48	3.02	3.90	3.25	1.45	0.13	1.64	3.53						
120	3.81	3.18	1.61	0.20	1.37	2.72	3.60	2.98	1.40	0.13	1.53	3.27						
125	3.49	2.94	1.42	0.21	1.31	2.45	3.28	2.68	1.33	0.13	1.40	3.03						
130	3.17	2.61	1.26	0.22	1.21	2.21	2.92	2.43	1.24	0.14	1.23	2.71						
135	2.87	2.10	1.13	0.23	1.19	2.01	2.38	2.15	1.18	0.14	1.06	2.26						
140	2.56	1.71	1.00	0.24	1.11	1.83	2.09	1.93	1.08	0.15	0.92	1.77						
145	2.26	1.44	0.90	0.24	1.01	1.61	1.72	1.67	1.01	0.17	0.84	1.51						
150	1.98	1.20	0.80	0.27	0.94	1.43	1.66	1.49	0.93	0.20	0.77	1.29						
155	1.71	0.99	0.77	0.28	0.84	1.25	1.51	1.31	0.84	0.22	0.77	1.07						
160	1.41	0.83	0.76	0.28	0.70	1.02	1.31	1.15	0.72	0.23	0.72	0.85						
165	1.16	0.68	0.75	0.30	0.59	0.83	1.12	0.92	0.61	0.24	0.69	0.74						
170	0.60	0.62	0.66	0.30	0.49	0.62	0.58	0.72	0.49	0.25	0.62	0.71						
175	0.48	0.53	0.51	0.30	0.33	0.38	0.46	0.58	0.40	0.27	0.50	0.65						
180	0.32	0.33	0.31	0.29	0.31	0.28	0.34	0.34	0.33	0.29	0.30	0.28						

C Range: 0 - 360DEG  
C Interval: 30.0DEG  
Test Speed: HIGH  
Temperature:25.3DEG  
Operators:LPC  
Test Date:2021-12-09

γ Range: 0 - 180DEG  
γ Interval: 1.0DEG  
Test System:EVERFINE GO-2000B\_V1 SYSTEM V2.0.362  
Humidity:65.0%  
Test Distance:9.200m [K=1.0000]  
Remarks:

Photometric Data Table [cd]

G/C	0.0	30.0	60.0	90.0	120.0	150.0	180.0	210.0	240.0	270.0
0.0	13.14	13.08	13.01	12.98	12.94	12.92	13.14	13.08	13.01	12.98
3.0	13.15	13.07	13.02	12.95	12.94	12.88	13.10	13.08	12.98	12.98
6.0	13.15	13.06	12.99	12.89	12.89	12.82	13.05	13.04	12.90	12.92
9.0	13.09	12.99	12.95	12.78	12.78	12.71	12.99	12.95	12.79	12.79
12.0	13.02	12.91	12.81	12.61	12.62	12.60	12.90	12.83	12.62	12.58
15.0	12.92	12.80	12.63	12.39	12.41	12.46	12.81	12.71	12.41	12.33
18.0	12.82	12.65	12.40	12.13	12.18	12.31	12.69	12.54	12.16	12.04
21.0	12.73	12.49	12.13	11.83	11.91	12.15	12.57	12.36	11.88	11.69
24.0	12.60	12.33	11.85	11.50	11.63	11.97	12.44	12.19	11.60	11.32
27.0	12.47	12.14	11.52	11.10	11.31	11.77	12.30	11.99	11.28	10.89
30.0	12.31	11.94	11.15	10.68	10.98	11.54	12.13	11.78	10.94	10.45
33.0	12.13	11.71	10.77	10.22	10.62	11.29	11.93	11.53	10.58	9.972
36.0	11.92	11.46	10.38	9.713	10.24	11.00	11.72	11.27	10.21	9.445
39.0	11.71	11.20	9.983	9.205	9.837	10.69	11.48	10.96	9.809	8.908
42.0	11.45	10.91	9.581	8.673	9.410	10.39	11.25	10.64	9.392	8.349
45.0	11.20	10.60	9.168	8.100	8.973	10.10	11.04	10.34	8.954	7.751
48.0	10.94	10.27	8.731	7.502	8.505	9.799	10.80	10.04	8.497	7.153
51.0	10.69	9.935	8.284	6.903	8.028	9.472	10.56	9.736	8.019	6.550
54.0	10.41	9.619	7.817	6.286	7.530	9.141	10.29	9.414	7.532	5.912
57.0	10.13	9.297	7.344	5.632	7.038	8.799	10.02	9.087	7.039	5.274
60.0	9.836	8.955	6.862	4.998	6.575	8.437	9.719	8.736	6.567	4.640
63.0	9.540	8.613	6.390	4.320	6.103	8.085	9.432	8.394	6.099	4.012
66.0	9.253	8.271	5.917	3.672	5.631	7.744	9.146	8.052	5.632	3.354
69.0	8.952	7.930	5.465	3.014	5.163	7.407	8.844	7.715	5.170	2.731
72.0	8.646	7.598	5.023	2.365	4.716	7.065	8.543	7.389	4.707	2.128
75.0	8.339	7.282	4.595	1.758	4.294	6.744	8.236	7.062	4.286	1.525
78.0	8.032	6.955	4.198	1.215	3.921	6.442	7.929	6.745	3.904	0.9966
81.0	7.716	6.648	3.851	0.7074	3.574	6.131	7.613	6.439	3.557	0.5338
84.0	7.394	6.341	3.534	0.3106	3.273	5.839	7.276	6.127	3.241	0.1771
87.0	7.062	6.025	3.258	0.2507	2.996	5.523	6.939	5.806	2.969	0.1056
90.0	6.731	5.708	3.011	0.1908	2.755	5.226	6.603	5.489	2.713	0.0854
93.0	6.399	5.417	2.785	0.1558	2.549	4.949	6.271	5.187	2.507	0.0804
96.0	6.072	5.105	2.594	0.1609	2.393	4.683	5.944	4.906	2.331	0.0804
99.0	5.751	4.526	2.438	0.1623	2.262	3.995	5.567	4.340	2.206	0.0804
102.0	5.328	4.236	2.287	0.1664	2.077	3.915	5.206	4.101	2.039	0.1004
105.0	5.037	4.060	2.001	0.1706	1.674	3.764	4.929	3.951	1.653	0.1219
108.0	4.750	3.854	1.990	0.1748	1.628	3.578	4.668	3.750	1.648	0.1241
111.0	4.479	3.663	1.891	0.1790	1.598	3.276	4.397	3.474	1.543	0.1263
114.0	4.237	3.492	1.804	0.1832	1.493	3.090	3.989	3.317	1.462	0.1284
117.0	4.021	3.337	1.759	0.1910	1.428	2.899	3.779	3.157	1.425	0.1306
120.0	3.810	3.181	1.609	0.2011	1.367	2.724	3.598	2.981	1.404	0.1317
123.0	3.614	3.045	1.508	0.2161	1.337	2.553	3.407	2.800	1.357	0.1333
126.0	3.428	2.889	1.387	0.2144	1.257	2.397	3.206	2.629	1.316	0.1349
129.0	3.237	2.723	1.292	0.2192	1.214	2.256	2.994	2.468	1.271	0.1365
132.0	3.051	2.392	1.206	0.2234	1.202	2.131	2.738	2.327	1.231	0.1381
135.0	2.865	2.105	1.131	0.2262	1.190	2.005	2.382	2.151	1.181	0.1397
138.0	2.679	1.819	1.051	0.2329	1.156	1.910	2.221	2.016	1.110	0.1407
141.0	2.499	1.643	0.9803	0.2379	1.091	1.799	2.040	1.865	1.055	0.1507
144.0	2.327	1.492	0.9200	0.2430	1.025	1.653	1.754	1.714	1.010	0.1558
147.0	2.147	1.342	0.8646	0.2564	0.9752	1.533	1.694	1.598	0.9598	0.1859
150.0	1.976	1.201	0.7993	0.2729	0.9399	1.432	1.658	1.488	0.9346	0.2010
153.0	1.815	1.080	0.7749	0.2772	0.8796	1.321	1.533	1.382	0.8692	0.2210
156.0	1.659	0.9546	0.7685	0.2804	0.8195	1.191	1.487	1.282	0.7990	0.2199
159.0	1.483	0.8542	0.7620	0.2830	0.7341	1.075	1.366	1.176	0.7635	0.2255
162.0	1.322	0.7638	0.7555	0.2856	0.6586	0.9595	1.206	1.111	0.6733	0.2312
165.0	1.162	0.6784	0.7491	0.2965	0.5933	0.8340	1.115	0.9204	0.6129	0.2372
168.0	0.6537	0.6532	0.7038	0.2965	0.5230	0.7133	0.5830	0.7945	0.5226	0.2462
171.0	0.5732	0.6081	0.6584	0.2965	0.4677	0.5774	0.5427	0.7137	0.4772	0.2513
174.0	0.4979	0.5377	0.5833	0.2965	0.3524	0.4267	0.4822	0.6287	0.4367	0.2633
177.0	0.4424	0.3965	0.4174	0.2965	0.3267	0.2764	0.4068	0.5079	0.3267	0.2714
180.0	0.3166	0.3267	0.3066	0.2915	0.3116	0.2814	0.3367	0.3367	0.3267	0.2865
G/C	300.0	330.0								
0.0	12.94	12.92								
3.0	12.93	12.93								
6.0	12.89	12.92								
9.0	12.81	12.91								
12.0	12.66	12.84								
15.0	12.45	12.73								
18.0	12.21	12.57								
21.0	11.92	12.39								
24.0	11.61	12.21								
27.0	11.26	12.04								
30.0	10.89	11.88								

C Range: 0 - 360DEG  
 C Interval: 30.0DEG  
 Test Speed: HIGH  
 Temperature: 25.3DEG  
 Operators: LPC  
 Test Date: 2021-12-09

γ Range: 0 - 180DEG  
 γ Interval: 1.0DEG  
 Test System: EVERFINE GO-2000B\_V1 SYSTEM V2.0.362  
 Humidity: 65.0%  
 Test Distance: 9.200m [K=1.0000]  
 Remarks:

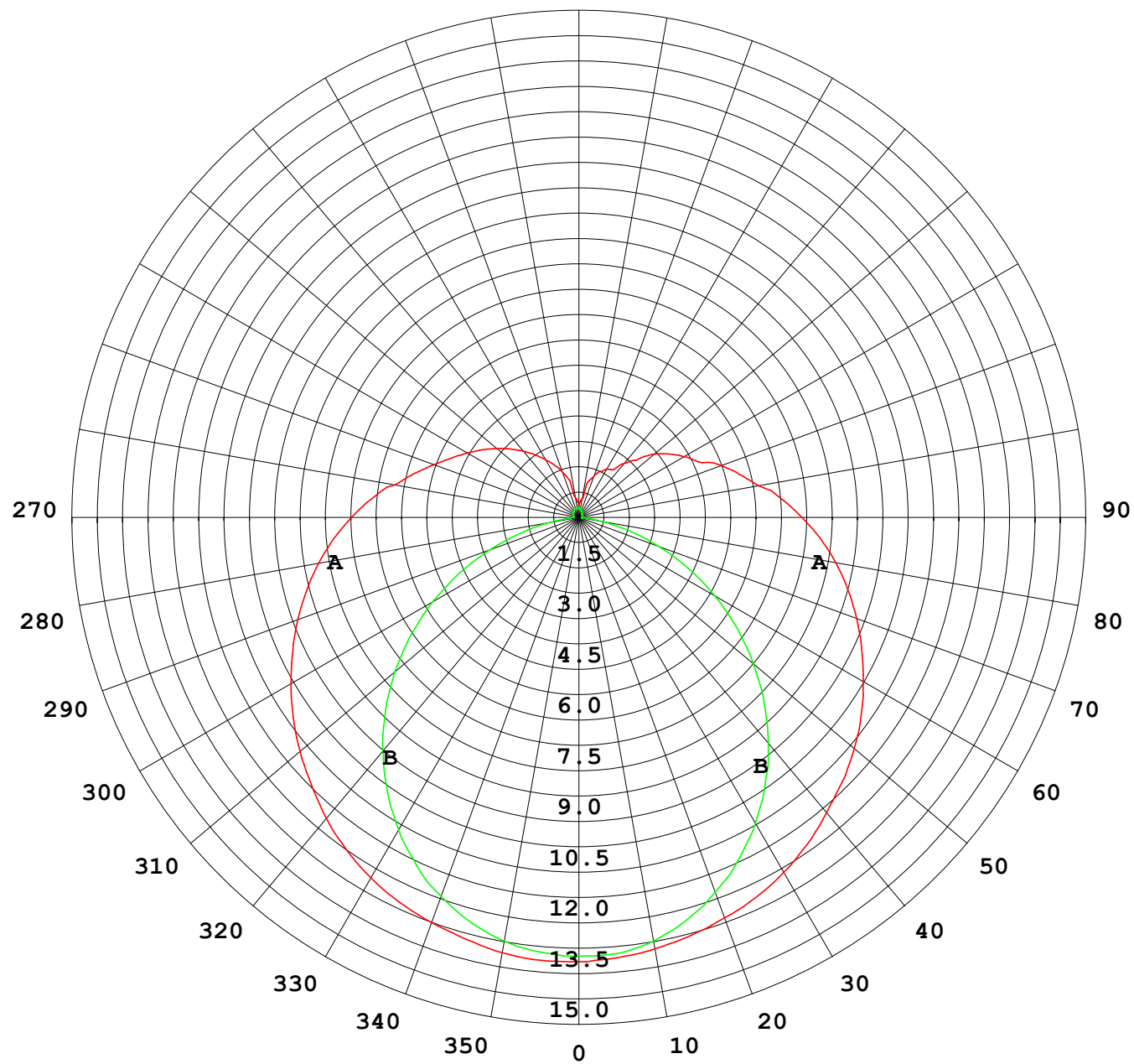
## Photometric Data Table [cd]

33.0	10.50	11.69
36.0	10.12	11.45
39.0	9.748	11.20
42.0	9.357	10.93
45.0	8.970	10.64
48.0	8.577	10.32
51.0	8.145	9.992
54.0	7.683	9.675
57.0	7.220	9.354
60.0	6.748	9.027
63.0	6.285	8.706
66.0	5.818	8.369
69.0	5.371	8.032
72.0	4.929	7.706
75.0	4.527	7.389
78.0	4.120	7.077
81.0	3.763	6.765
84.0	3.446	6.469
87.0	3.165	6.152
90.0	2.919	5.851
93.0	2.693	5.549
96.0	2.512	5.248
99.0	2.336	4.922
102.0	2.195	4.643
105.0	1.925	4.372
108.0	1.878	4.172
111.0	1.839	3.996
114.0	1.792	3.780
117.0	1.792	3.584
120.0	1.648	3.423
123.0	1.527	3.272
126.0	1.442	3.121
129.0	1.347	2.986
132.0	1.256	2.800
135.0	1.171	2.514
138.0	1.055	2.262
141.0	0.9897	1.931
144.0	0.9143	1.724
147.0	0.8443	1.553
150.0	0.7738	1.418
153.0	0.7714	1.292
156.0	0.7689	1.161
159.0	0.7538	1.026
162.0	0.7236	0.9049
165.0	0.6885	0.7993
168.0	0.6884	0.7439
171.0	0.6681	0.7258
174.0	0.6131	0.7137
177.0	0.5571	0.6586
180.0	0.3463	0.5484
180.0	0.3015	0.2814

C Range: 0 - 360DEG  
 C Interval: 30.0DEG  
 Test Speed: HIGH  
 Temperature: 25.3DEG  
 Operators: LPC  
 Test Date: 2021-12-09

γ Range: 0 - 180DEG  
 γ Interval: 1.0DEG  
 Test System: EVERFINE GO-2000B\_V1 SYSTEM V2.0.362  
 Humidity: 65.0%  
 Test Distance: 9.200m [K=1.0000]  
 Remarks:

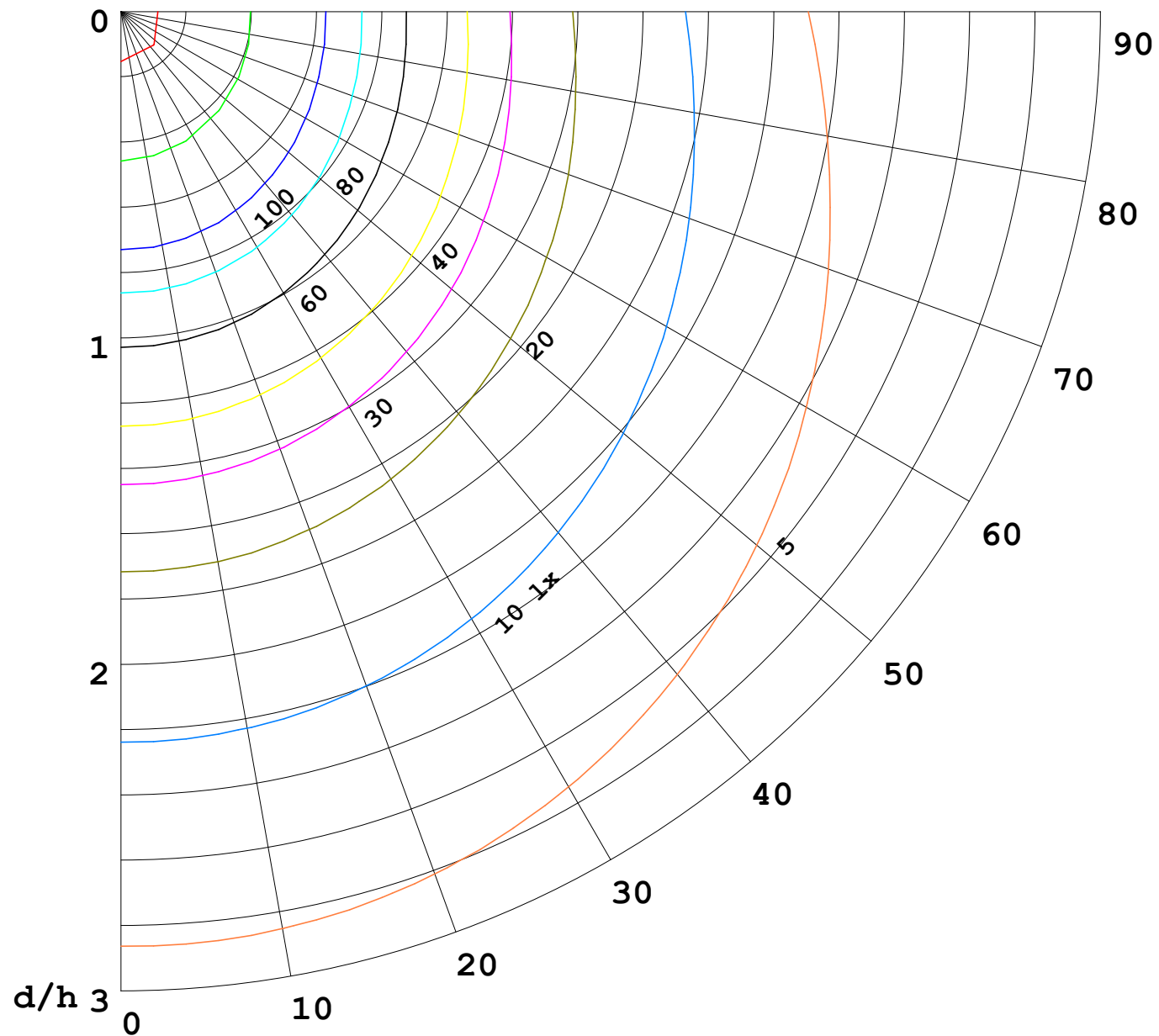
I (cd)





1000 lm

$\kappa = 1$



F = 5000 lm  
 K = 0.7  
 Hcc = 0.0 m  
 Hfc = 0.0 m  
 Eave = 100 lx

	Pcc	Pw	Pfc
—	70	50	30
—	50	30	20

