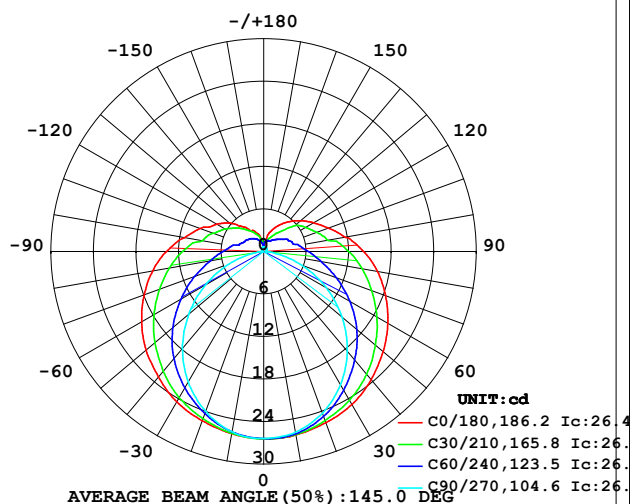


LUMINAIRE PHOTOMETRIC TEST REPORT

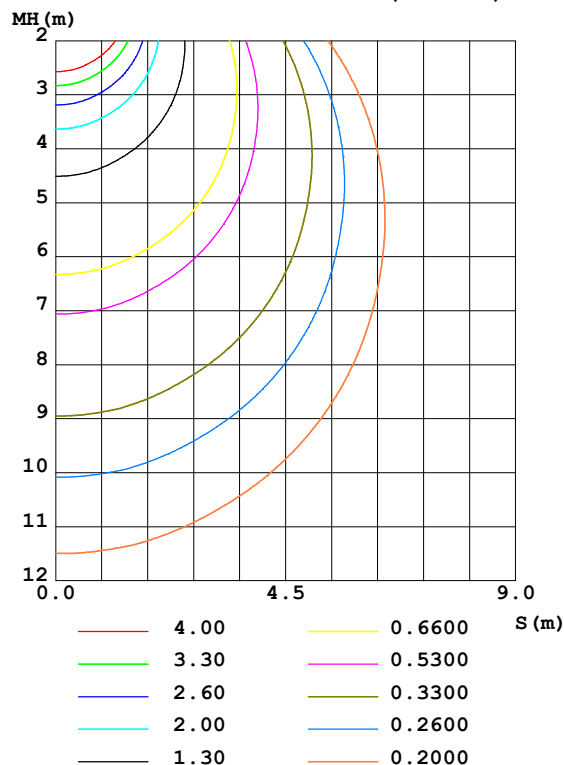
Test:U:48.00V I:0.0803A P:3.854W PF:1.000 Freq:50.00Hz Lamp Flux:130.53lx1 lm		
NAME: SF21-48V-5050-60-RGB-G	TYPE: 硅胶	WEIGHT:
SPEC.:	DIM.: 28mm*11.5mm	SERIAL No.:2021120908
MFR.: OLYMPIA	SUR.:1*0.016	Shielding Angle:

DATA OF LAMP		PHOTOMETRIC DATA Eff: 33.87 lm/W			
MODEL	5050	I _{max} (cd)	26.45	S/MH (C0/180)	1.40
NOMINAL POWER (W)	3.3	LOR (%)	100.0	S/MH (C90/270)	1.21
RATED VOLTAGE (V)	48	TOTAL FLUX (lm)	130.53	η UP, DN (C0-180)	11.2, 38.9
NOMINAL FLUX (lm)	130.531	CIE CLASS	SEMI-D.	η UP, DN (C180-360)	11.2, 38.7
LAMPS INSIDE	1	η up (%)	22.4	CIBSE SHR NOM	1.50
TEST VOLTAGE (V)	48	η down (%)	77.6	CIBSE SHR MAX	1.55

LUMINOUS INTENSITY DISTRIBUTION DIAGRAM



C0 PLANE ISOLUX DIAGRAM (UNIT: lx)



C Range: 0 - 360DEG
C Interval: 30.0DEG
Test Speed: HIGH
Temperature: 25.3DEG
Operators: LPC
Test Date: 2021-12-09

γ Range: 0 - 180DEG
γ Interval: 1.0DEG
Test System: EVERFINE GO-2000B_V1 SYSTEM V2.0.362
Humidity: 65.0%
Test Distance: 9.200m [K=1.0000]
Remarks:

ZONAL FLUX DIAGRAM

ZONAL FLUX DIAGRAM:

γ	C0	C45	C90	C135	C180	C225	C270	C315	γ	Φ zone	Φ total	%lum, lamp
10	26.29	26.17	25.89	25.91	26.10	25.95	25.83	26.18	0- 10	2.504	2.504	1.92,1.92
20	25.71	25.06	24.28	24.69	25.40	24.71	24.00	25.00	10- 20	7.211	9.716	7.44,7.44
30	24.91	23.40	21.70	22.98	24.51	23.03	21.28	23.30	20- 30	11.11	20.82	16,16
40	23.60	21.29	18.35	20.75	23.10	20.88	17.83	21.29	30- 40	13.84	34.67	26.6,26.6
50	22.01	18.85	14.44	18.23	21.66	18.39	13.82	18.96	40- 50	15.22	49.89	38.2,38.2
60	20.23	16.23	10.16	15.47	19.87	15.68	9.522	16.38	50- 60	15.24	65.13	49.9,49.9
70	18.31	13.58	5.746	12.79	17.95	13.01	5.195	13.74	60- 70	14.07	79.20	60.7,60.7
80	16.31	11.17	1.827	10.39	15.91	10.59	1.445	11.33	70- 80	12.11	91.31	70,70
90	14.11	9.157	0.3518	8.426	13.71	8.594	0.2471	9.330	80- 90	10.00	101.3	77.6,77.6
100	11.69	7.089	0.4022	6.591	11.34	6.703	0.2761	7.241	90-100	8.206	109.5	83.9,83.9
110	9.712	6.073	0.4273	5.437	9.517	5.484	0.2990	6.167	100-110	6.366	115.9	88.8,88.8
120	8.128	5.152	0.4574	4.460	7.673	4.672	0.3216	5.217	110-120	5.006	120.9	92.6,92.6
130	6.776	4.156	0.4875	3.792	6.265	3.953	0.3700	4.295	120-130	3.826	124.7	95.5,95.5
140	5.485	2.925	0.5227	3.151	4.547	3.247	0.4070	2.955	130-140	2.639	127.4	97.6,97.6
150	4.243	2.166	0.5896	2.570	3.372	2.659	0.5174	2.207	140-150	1.657	129.0	98.8,98.8
160	3.032	1.733	0.6051	1.932	2.683	2.015	0.5778	1.714	150-160	0.9696	130.0	99.6,99.6
170	1.282	1.422	0.6358	1.251	1.261	1.359	0.6081	1.477	160-170	0.4468	130.4	99.9,99.9
180	0.7237	0.6835	0.6533	0.6785	0.7086	0.7036	0.6232	0.6584	170-180	0.1020	130.5	100,100
DEG	LUMINOUS INTENSITY:cd									UNIT:lm		

Conical surface Flux(90deg): 42.191 lm

%lum = 32.3%

%lamp = 32.3%

Conical surface Flux(120deg): 65.132 lm

%lum = 49.9%

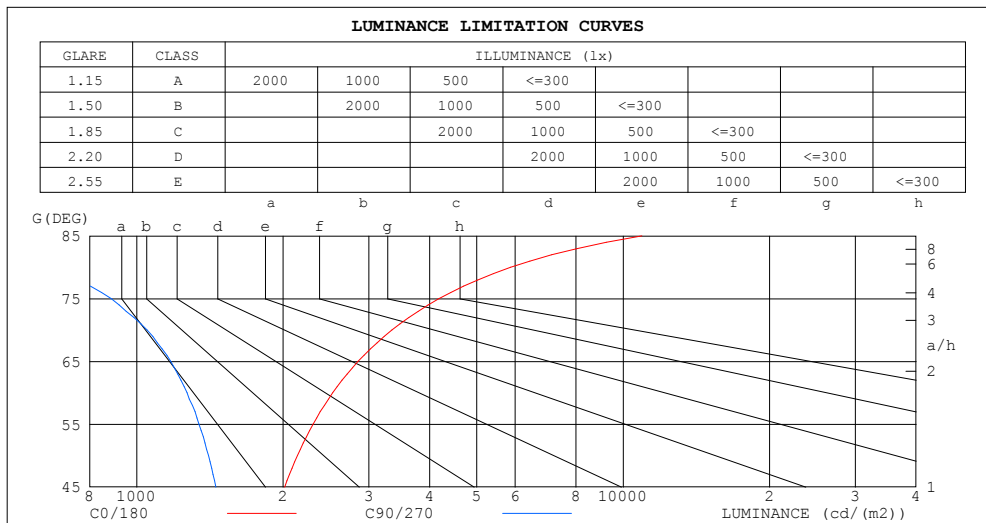
%lamp = 49.9%

C Range: 0 - 360DEG
 C Interval: 30.0DEG
 Test Speed: HIGH
 Temperature:25.3DEG
 Operators:LPC
 Test Date:2021-12-09

γ Range: 0 - 180DEG
 γ Interval: 1.0DEG
 Test System:EVERFINE GO-2000B_V1 SYSTEM V2.0.362
 Humidity:65.0%
 Test Distance:9.200m [K=1.0000]
 Remarks:

LUMINANCE LIMITATION CURVES

Test:U:48.00V I:0.0803A P:3.854W PF:1.000 Freq:50.00Hz Lamp Flux:130.53lx1 lm		
NAME: SF21-48V-5050-60-RGB-G	TYPE: 硅胶	WEIGHT:
SPEC.:	DIM.: 28mm*11.5mm	SERIAL No.:2021120908
MFR.: OLYMPIA	SUR.:1*0.016	Shielding Angle:



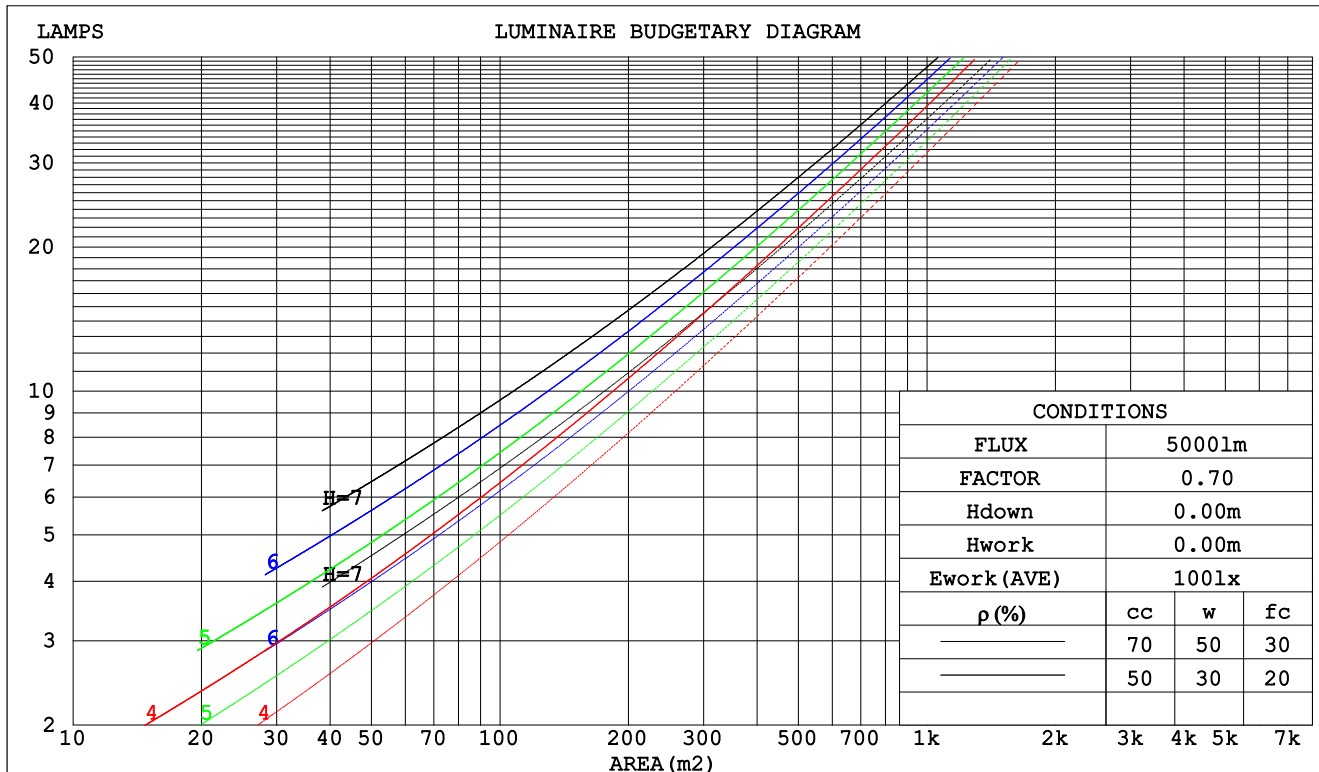
C Range: 0 - 360DEG
C Interval: 30.0DEG
Test Speed: HIGH
Temperature:25.3DEG
Operators:LPC
Test Date:2021-12-09

γ Range: 0 - 180DEG
γ Interval: 1.0DEG
Test System:EVERFINE GO-2000B_V1 SYSTEM V2.0.362
Humidity:65.0%
Test Distance:9.200m [K=1.0000]
Remarks:

CU AND LUMINAIRE BUDGETARY ESTIMATE DIAGRAM

Test:U:48.00V I:0.0803A P:3.854W PF:1.000 Freq:50.00Hz Lamp Flux:130.53lx1 lm		
NAME: SF21-48V-5050-60-RGB-G	TYPE:硅胶	WEIGHT:
SPEC.:	DIM.: 28mm*11.5mm	SERIAL No.:2021120908
MFR.: OLYMPIA	SUR.:1*0.016	Shielding Angle:

pcc	80%			70%			50%			30%			10%			0
pw	50%	30%	10%	50%	30%	10%	50%	30%	10%	50%	30%	10%	50%	30%	10%	0
pfc	20%			20%			20%			20%			20%			0
RCR	Coefficients of Utilization(CU)															
	RCR:Room Cavity Ratio															
0.0	1.14	1.14	1.14	1.08	1.08	1.08	.99	.99	.99	.90	.90	.90	.81	.81	.81	.78
1.0	.95	.89	.84	.90	.85	.81	.82	.78	.74	.74	.71	.68	.67	.64	.62	.58
2.0	.81	.73	.66	.77	.70	.64	.70	.64	.59	.63	.58	.54	.57	.53	.50	.46
3.0	.70	.61	.54	.67	.59	.52	.60	.54	.48	.55	.49	.45	.49	.45	.41	.38
4.0	.61	.52	.45	.59	.50	.43	.53	.46	.40	.48	.42	.37	.44	.39	.35	.32
5.0	.55	.45	.38	.52	.43	.37	.47	.40	.34	.43	.37	.32	.39	.34	.30	.27
6.0	.49	.39	.33	.47	.38	.32	.43	.35	.30	.39	.32	.28	.35	.30	.26	.23
7.0	.44	.35	.29	.42	.34	.28	.39	.31	.26	.35	.29	.24	.32	.27	.23	.20
8.0	.40	.31	.25	.38	.30	.25	.35	.28	.23	.32	.26	.22	.29	.24	.20	.18
9.0	.36	.28	.23	.35	.27	.22	.32	.25	.21	.30	.24	.19	.27	.22	.18	.16
10.0	.34	.26	.20	.32	.25	.20	.30	.23	.19	.27	.22	.17	.25	.20	.16	.14



C Range: 0 - 360DEG
 C Interval: 30.0DEG
 Test Speed: HIGH
 Temperature:25.3DEG
 Operators:LPC
 Test Date:2021-12-09

γ Range: 0 - 180DEG
 γ Interval: 1.0DEG
 Test System:EVERFINE GO-2000B_V1 SYSTEM V2.0.362
 Humidity:65.0%
 Test Distance:9.200m [K=1.0000]
 Remarks:

WEC AND CCEC

Test:U:48.00V I:0.0803A P:3.854W PF:1.000 Freq:50.00Hz Lamp Flux:130.531x1 lm		
NAME: SF21-48V-5050-60-RGB-G	TYPE: 硅胶	WEIGHT:
SPEC.:	DIM.: 28mm*11.5mm	SERIAL No.:2021120908
MFR.: OLYMPIA	SUR.:1*0.016	Shielding Angle:

pcc	80%			70%			50%			30%			10%			0	
pw	50%	30%	10%	50%	30%	10%	50%	30%	10%	50%	30%	10%	50%	30%	10%	0	
pfc	20%			20%			20%			20%			20%			0	
RCR	RCR:Room Cavity Ratio						Wall Exitance Coefficients(WEC)										
0.0																	
1.0	.386	.219	.070	.372	.212	.067	.346	.198	.063	.321	.185	.059	.299	.173	.056		
2.0	.333	.182	.056	.320	.176	.054	.296	.165	.051	.274	.154	.048	.254	.144	.045		
3.0	.295	.157	.047	.283	.152	.046	.262	.142	.043	.242	.133	.041	.223	.124	.038		
4.0	.265	.138	.041	.255	.133	.039	.235	.125	.037	.217	.116	.035	.200	.109	.033		
5.0	.241	.123	.036	.231	.119	.035	.214	.111	.033	.197	.104	.031	.181	.097	.029		
6.0	.221	.111	.032	.212	.107	.031	.196	.100	.029	.180	.094	.028	.166	.087	.026		
7.0	.203	.101	.029	.196	.097	.028	.181	.091	.026	.167	.085	.025	.153	.080	.023		
8.0	.189	.092	.026	.181	.089	.025	.168	.084	.024	.155	.078	.023	.142	.073	.021		
9.0	.176	.085	.024	.169	.082	.023	.156	.077	.022	.144	.072	.021	.133	.068	.020		
10.0	.164	.079	.022	.158	.076	.021	.147	.072	.020	.135	.067	.019	.125	.063	.018		

pcc	80%			70%			50%			30%			10%			0
pw	50%	30%	10%	50%	30%	10%	50%	30%	10%	50%	30%	10%	50%	30%	10%	0
pfc	20%			20%			20%			20%			20%			0
RCR	RCR:Room Cavity Ratio						Ceiling Cavity Exitance Coefficients(CCEC)									
0.0	.361	.361	.361	.309	.309	.309	.211	.211	.211	.121	.121	.121	.039	.039	.039	
1.0	.358	.327	.300	.306	.281	.258	.209	.193	.179	.120	.112	.104	.039	.036	.034	
2.0	.351	.305	.266	.300	.262	.230	.206	.182	.160	.119	.106	.094	.038	.034	.031	
3.0	.343	.289	.245	.294	.249	.212	.202	.173	.149	.117	.101	.088	.037	.033	.029	
4.0	.336	.276	.231	.288	.239	.200	.198	.166	.141	.115	.097	.084	.037	.032	.027	
5.0	.328	.266	.221	.282	.231	.192	.194	.161	.136	.112	.095	.081	.036	.031	.027	
6.0	.321	.259	.214	.276	.224	.186	.190	.157	.132	.110	.092	.078	.036	.030	.026	
7.0	.314	.252	.209	.270	.218	.182	.186	.153	.129	.108	.090	.077	.035	.030	.025	
8.0	.307	.247	.205	.264	.214	.179	.183	.150	.127	.106	.089	.076	.034	.029	.025	
9.0	.301	.242	.202	.259	.210	.176	.179	.148	.125	.105	.087	.075	.034	.029	.025	
10.0	.295	.238	.200	.254	.206	.174	.176	.145	.124	.103	.086	.074	.033	.028	.024	

C Range: 0 - 360DEG
 C Interval: 30.0DEG
 Test Speed: HIGH
 Temperature:25.3DEG
 Operators:LPC
 Test Date:2021-12-09

γ Range: 0 - 180DEG
 γ Interval: 1.0DEG
 Test System:EVERFINE GO-2000B_V1 SYSTEM V2.0.362
 Humidity:65.0%
 Test Distance:9.200m [K=1.0000]
 Remarks:

UGR(Unified Glare Rating) Table

Test:U:48.00V I:0.0803A P:3.854W PF:1.000 Freq:50.00Hz Lamp Flux:130.531x1 lm										
NAME: SF21-48V-5050-60-RGB-G					TYPE: 硅胶			WEIGHT:		
SPEC.:					DIM.: 28mm*11.5mm			SERIAL No.:2021120908		
MFR.: OLYMPIA					SUR.:1*0.016			Shielding Angle:		
ceiling/cavity	0.7	0.7	0.5	0.5	0.3	0.7	0.7	0.5	0.5	0.3
walls	0.5	0.3	0.5	0.3	0.3	0.5	0.3	0.5	0.3	0.3
working plane	0.2	0.2	0.2	0.2	0.2	0.2	0.2	0.2	0.2	0.2
Room dimensions	Viewed crosswise					Viewed endwise				
x = 2H y = 2H	22.0	23.3	22.5	23.9	24.5	19.4	20.8	20.0	21.3	22.0
3H	24.8	26.0	25.4	26.6	27.3	20.9	22.1	21.4	22.7	23.4
4H	26.3	27.5	26.9	28.1	28.8	21.4	22.5	22.0	23.2	23.9
6H	28.1	29.2	28.7	29.8	30.5	21.7	22.8	22.4	23.4	24.2
8H	29.0	30.1	29.7	30.7	31.5	21.8	22.9	22.4	23.5	24.2
12H	30.2	31.2	30.8	31.8	32.6	21.8	22.8	22.5	23.5	24.2
4H 2H	22.5	23.7	23.1	24.3	25.0	20.7	21.9	21.3	22.5	23.2
3H	25.6	26.6	26.2	27.2	28.0	22.5	23.5	23.1	24.1	24.9
4H	27.3	28.3	28.0	28.9	29.7	23.2	24.2	23.9	24.8	25.6
6H	29.3	30.1	30.0	30.8	31.6	23.8	24.7	24.5	25.4	26.2
8H	30.4	31.2	31.1	31.9	32.7	24.0	24.8	24.7	25.5	26.4
12H	31.6	32.4	32.4	33.1	33.9	24.1	24.9	24.9	25.6	26.4
8H 4H	27.7	28.4	28.4	29.2	30.0	24.5	25.3	25.2	26.0	26.8
6H	29.9	30.6	30.7	31.3	32.2	25.5	26.2	26.3	26.9	27.8
8H	31.3	31.8	32.0	32.6	33.5	26.0	26.6	26.8	27.4	28.3
12H	32.8	33.3	33.6	34.1	35.0	26.4	26.9	27.1	27.7	28.6
12H 4H	27.7	28.4	28.4	29.1	30.0	24.9	25.6	25.6	26.4	27.2
6H	30.1	30.6	30.8	31.4	32.3	26.2	26.8	27.0	27.6	28.5
8H	31.5	32.0	32.3	32.8	33.7	26.9	27.4	27.7	28.2	29.1
Variations with the observer position at spacings:										
S = 1.0H	+ 0.1 / - 0.1					+ 0.1 / - 0.1				
1.5H	+ 0.2 / - 0.3					+ 0.2 / - 0.3				
2.0H	+ 0.2 / - 0.3					+ 0.3 / - 0.4				

CIE Pub.117, 130.5 lm Total Lamp Luminous Flux Correct (8log(F/F0) = -7.1)

C Range: 0 - 360DEG
C Interval: 30.0DEG
Test Speed: HIGH
Temperature:25.3DEG
Operators:LPC
Test Date:2021-12-09

γ Range: 0 - 180DEG
γ Interval: 1.0DEG
Test System:EVERFINE GO-2000B_V1 SYSTEM V2.0.362
Humidity:65.0%
Test Distance:9.200m [K=1.0000]
Remarks:

UTILIZATION FACTORS TABLE

Test:U:48.00V I:0.0803A P:3.854W PF:1.000 Freq:50.00Hz Lamp Flux:130.53lx1 lm		
NAME: SF21-48V-5050-60-RGB-G	TYPE: 硅胶	WEIGHT:
SPEC.:	DIM.: 28mm*11.5mm	SERIAL No.:2021120908
MFR.: OLYMPIA	SUR.:1*0.016	Shielding Angle:

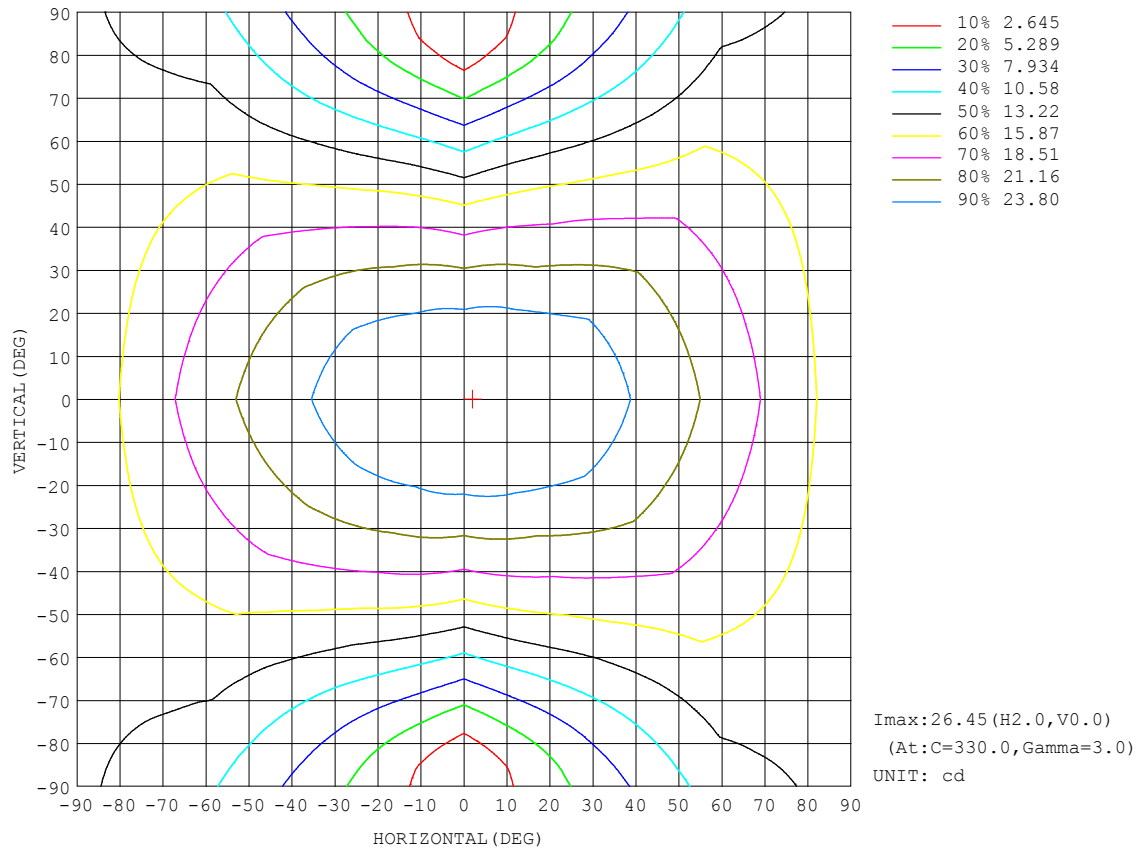
REFLECTANCE										
Ceiling	0.8	0.8	0.8	0.7	0.7	0.7	0.5	0.5	0.5	0
Walls	0.7	0.5	0.3	0.7	0.5	0.3	0.7	0.5	0.3	0
Working plane	0.2	0.2	0.2	0.2	0.2	0.2	0.2	0.2	0.2	0
ROOM INDEX	UTILIZATION FACTORS (PERCENT) $k(RI) \times RCR = 5$									
$k = 0.60$	46	34	27	45	33	26	43	32	26	19
0.80	55	42	34	54	42	34	51	40	33	25
1.00	63	50	42	61	49	41	57	49	40	30
1.25	70	57	49	67	56	48	63	53	46	36
1.50	75	63	54	72	61	53	67	57	50	39
2.00	82	71	63	79	69	61	73	64	58	45
2.50	87	77	68	83	74	66	76	69	63	49
3.00	91	81	74	87	78	71	79	73	67	52
4.00	96	87	81	91	84	78	83	78	73	57
5.00	99	91	85	94	88	82	86	81	76	60
ROOM INDEX	UF (total)									Direct
According to DIN EN 13032-2 2004			Suspended					SHRNOM = 1.25		

C Range: 0 - 360DEG
C Interval: 30.0DEG
Test Speed: HIGH
Temperature:25.3DEG
Operators:LPC
Test Date:2021-12-09

γ Range: 0 - 180DEG
 γ Interval: 1.0DEG
Test System:EVERFINE GO-2000B_V1 SYSTEM V2.0.362
Humidity:65.0%
Test Distance:9.200m [K=1.0000]
Remarks:

ISOCANDELA DIAGRAM

Test:U:48.00V I:0.0803A P:3.854W PF:1.000 Freq:50.00Hz Lamp Flux:130.53lx1 lm		
NAME: SF21-48V-5050-60-RGB-G	TYPE: 硅胶	WEIGHT:
SPEC.:	DIM.: 28mm*11.5mm	SERIAL No.:2021120908
MFR.: OLYMPIA	SUR.:1*0.016	Shielding Angle:

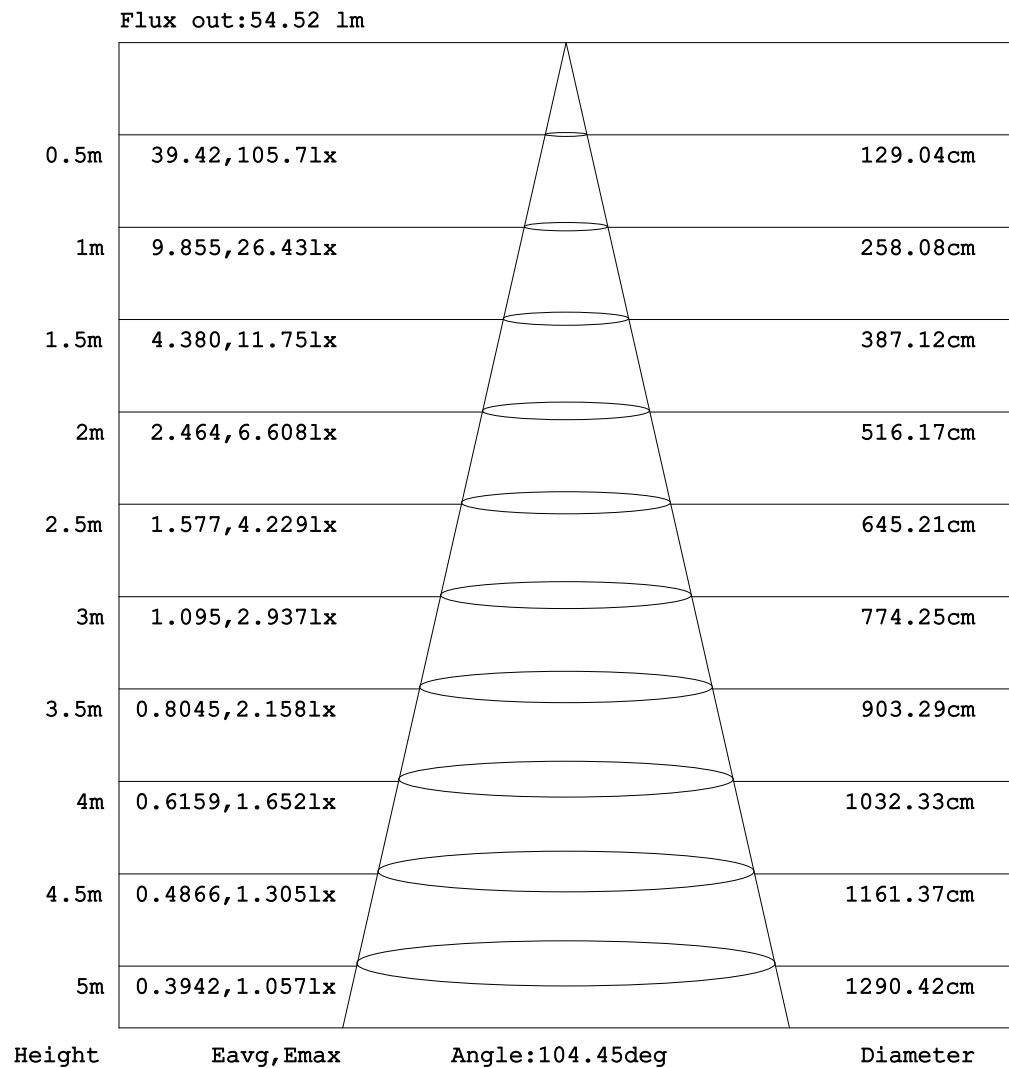


C Range: 0 - 360DEG
C Interval: 30.0DEG
Test Speed: HIGH
Temperature:25.3DEG
Operators:LPC
Test Date:2021-12-09

γ Range: 0 - 180DEG
 γ Interval: 1.0DEG
Test System:EVERFINE GO-2000B_V1 SYSTEM V2.0.362
Humidity:65.0%
Test Distance:9.200m [K=1.0000]
Remarks:

AAI Figure

Test:U:48.00V I:0.0803A P:3.854W PF:1.000 Freq:50.00Hz Lamp Flux:130.53lx1 lm		
NAME: SF21-48V-5050-60-RGB-G	TYPE: 硅胶	WEIGHT:
SPEC.:	DIM.: 28mm*11.5mm	SERIAL No.:2021120908
MFR.: OLYMPIA	SUR.:1*0.016	Shielding Angle:



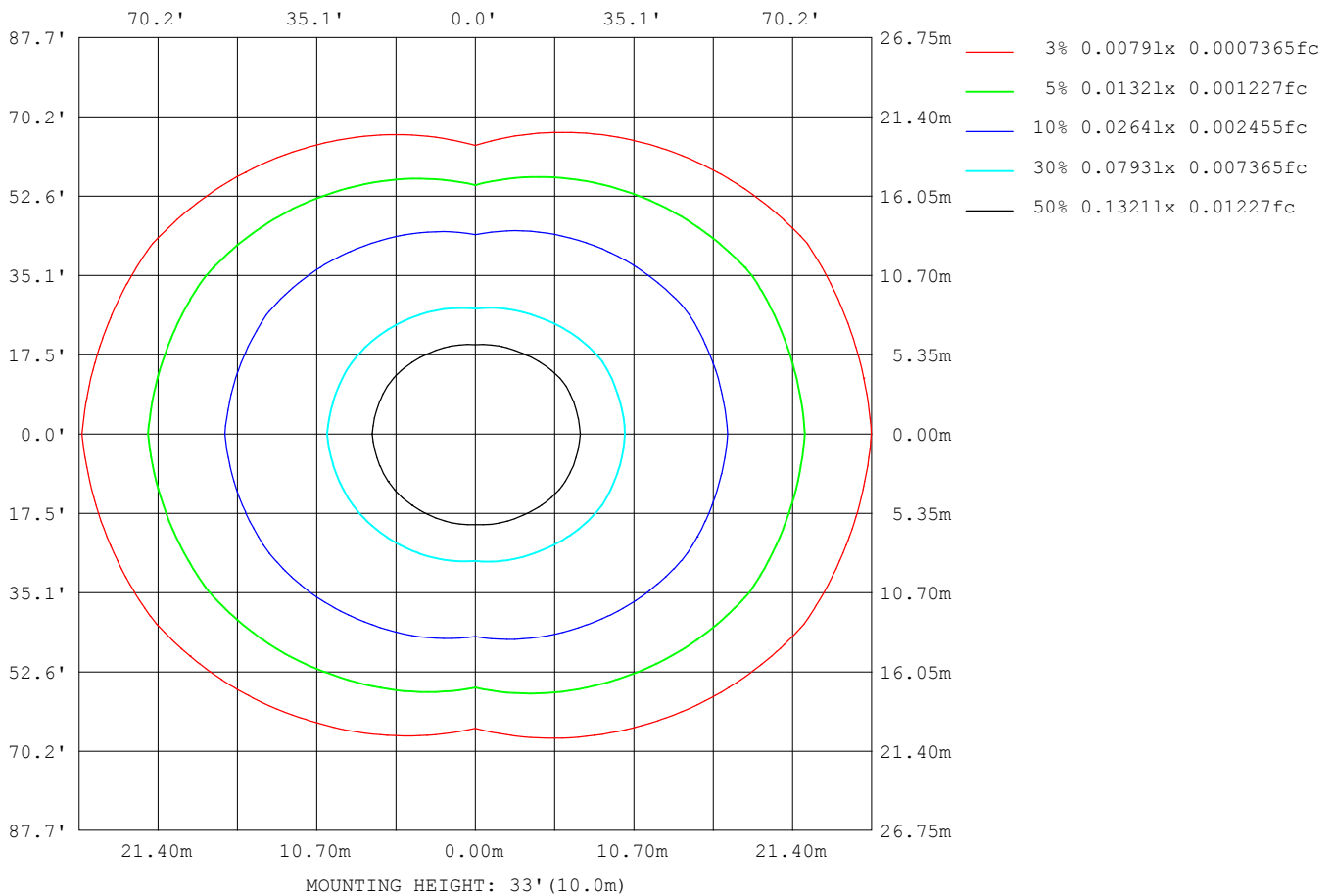
Note: The Curves indicate the illuminated area and the average illumination when the luminaire is at different distance.

C Range: 0 - 360DEG
 C Interval: 30.0DEG
 Test Speed: HIGH
 Temperature: 25.3DEG
 Operators: LPC
 Test Date: 2021-12-09

γ Range: 0 - 180DEG
 γ Interval: 1.0DEG
 Test System: EVERFINE GO-2000B_V1 SYSTEM V2.0.362
 Humidity: 65.0%
 Test Distance: 9.200m [K=1.0000]
 Remarks:

ISOLUX DIAGRAM

Test:U:48.00V I:0.0803A P:3.854W PF:1.000 Freq:50.00Hz Lamp Flux:130.53lx1 lm		
NAME: SF21-48V-5050-60-RGB-G	TYPE: 硅胶	WEIGHT:
SPEC.:	DIM.: 28mm*11.5mm	SERIAL No.:2021120908
MFR.: OLYMPIA	SUR.:1*0.016	Shielding Angle:



C Range: 0 - 360DEG
 C Interval: 30.0DEG
 Test Speed: HIGH
 Temperature: 25.3DEG
 Operators: LPC
 Test Date: 2021-12-09

γ Range: 0 - 180DEG
 γ Interval: 1.0DEG
 Test System: EVERFINE GO-2000B_V1 SYSTEM V2.0.362
 Humidity: 65.0%
 Test Distance: 9.200m [K=1.0000]
 Remarks:

LED Avg.L Report

Test:U:48.00V I:0.0803A P:3.854W PF:1.000 Freq:50.00Hz Lamp Flux:130.531x1 lm		
NAME: SF21-48V-5050-60-RGB-G	TYPE:硅胶	WEIGHT:
SPEC.:	DIM.: 28mm*11.5mm	SERIAL No.:2021120908
MFR.: OLYMPIA	SUR.:1*0.016	Shielding Angle:

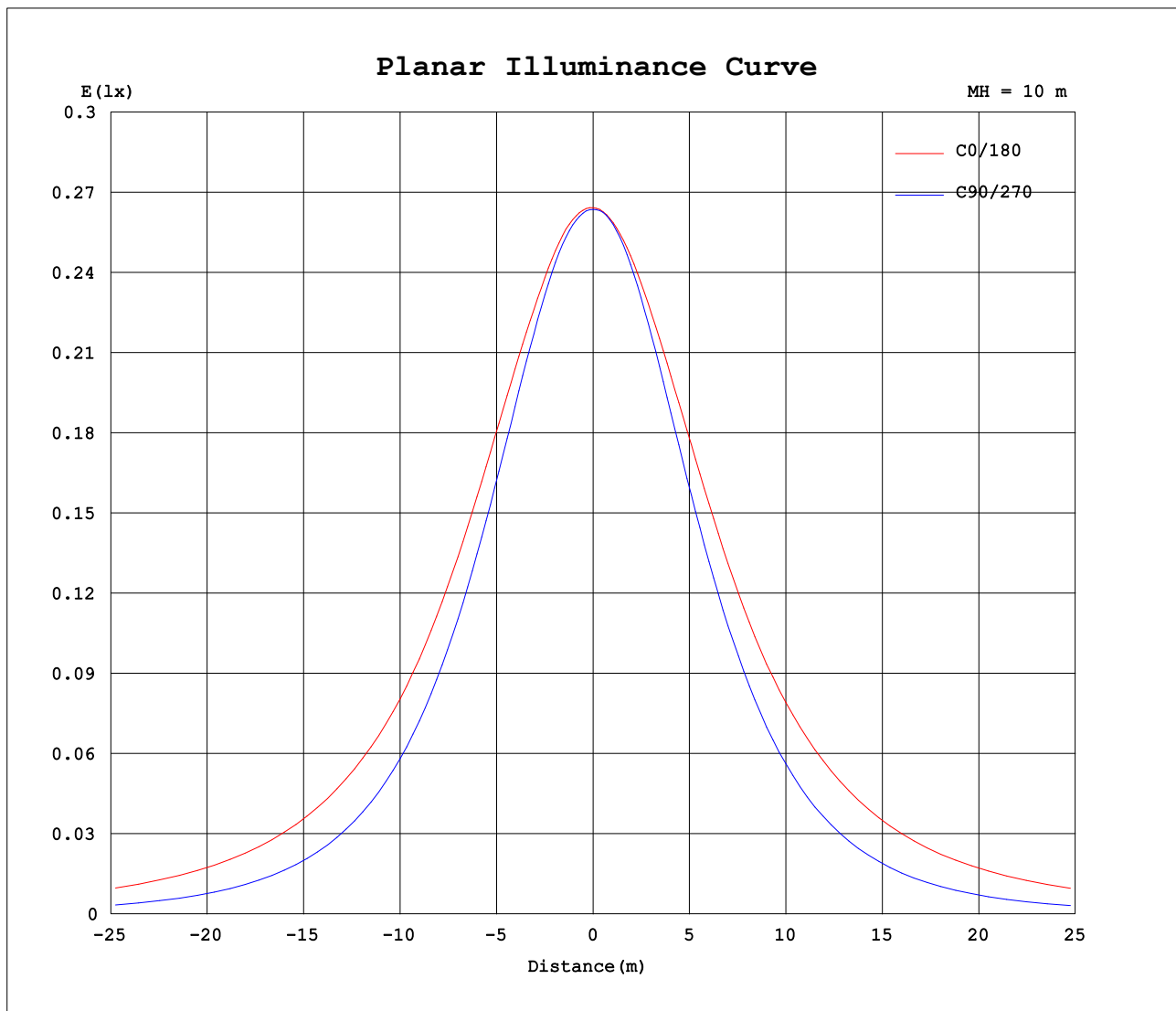
AvgL	cd/m2
L_0~180 (65) av	2825
L_0~180 (75) av	4138
L_0~180 (85) av	10783
L_90~270 (65) av	1129
L_90~270 (75) av	825
L_90~270 (85) av	301
L_45 (65) av	2179
L_45 (75) av	2956
L_45 (85) av	7235

Standard: GB/T 29293-2012

C Range: 0 - 360DEG
C Interval: 30.0DEG
Test Speed: HIGH
Temperature:25.3DEG
Operators:LPC
Test Date:2021-12-09

γ Range: 0 - 180DEG
γ Interval: 1.0DEG
Test System:EVERFINE GO-2000B_V1 SYSTEM V2.0.362
Humidity:65.0%
Test Distance:9.200m [K=1.0000]
Remarks:

Planar Illuminance Curve



C Range: 0 - 360DEG
C Interval: 30.0DEG
Test Speed: HIGH
Temperature: 25.3DEG
Operators: LPC
Test Date: 2021-12-09

γ Range: 0 - 180DEG
 γ Interval: 1.0DEG
Test System: EVERFINE GO-2000B_V1 SYSTEM V2.0.362
Humidity: 65.0%
Test Distance: 9.200m [K=1.0000]
Remarks:

LUMINOUS DISTRIBUTION INTENSITY DATA

Test:U:48.00V I:0.0803A P:3.854W PF:1.000 Freq:50.00Hz Lamp Flux:130.531x1 lm		
NAME: SF21-48V-5050-60-RGB-G	TYPE: 硅胶	WEIGHT:
SPEC.:	DIM.: 28mm*11.5mm	SERIAL No.:2021120908
MFR.: OLYMPIA	SUR.:1*0.016	Shielding Angle:

Table--1

UNIT: cd

C (DEG) γ (DEG)	0	30	60	90	120	150	180	210	240	270	300	330						
0	26.4	26.4	26.4	26.4	26.4	26.4	26.4	26.4	26.4	26.4	26.4	26.4						
5	26.4	26.4	26.4	26.3	26.3	26.2	26.3	26.3	26.2	26.3	26.3	26.4						
10	26.3	26.2	26.1	25.9	25.9	25.9	26.1	26.0	25.8	25.8	26.0	26.3						
15	26.0	25.9	25.5	25.2	25.2	25.5	25.8	25.6	25.2	25.0	25.4	26.0						
20	25.7	25.4	24.7	24.3	24.4	25.0	25.4	25.1	24.3	24.0	24.6	25.4						
25	25.4	24.8	23.7	23.1	23.4	24.4	25.0	24.5	23.3	22.7	23.5	24.9						
30	24.9	24.2	22.6	21.7	22.3	23.6	24.5	23.8	22.2	21.3	22.3	24.3						
35	24.3	23.5	21.3	20.1	21.1	22.7	23.9	23.0	21.0	19.6	21.0	23.6						
40	23.6	22.6	20.0	18.3	19.8	21.7	23.1	22.0	19.7	17.8	19.8	22.8						
45	22.8	21.6	18.6	16.5	18.3	20.7	22.4	21.0	18.3	15.9	18.5	21.9						
50	22.0	20.6	17.2	14.4	16.7	19.7	21.7	20.0	16.7	13.8	17.1	20.8						
55	21.1	19.5	15.6	12.3	15.1	18.6	20.8	19.0	15.1	11.7	15.6	19.8						
60	20.2	18.4	14.0	10.2	13.5	17.5	19.9	17.9	13.5	9.52	14.0	18.7						
65	19.3	17.3	12.4	7.95	11.9	16.3	18.9	16.8	11.9	7.33	12.4	17.6						
70	18.3	16.2	10.9	5.75	10.3	15.2	17.9	15.6	10.4	5.19	10.9	16.5						
75	17.3	15.2	9.49	3.67	8.89	14.2	17.0	14.6	8.91	3.16	9.49	15.5						
80	16.3	14.1	8.22	1.83	7.65	13.1	15.9	13.5	7.65	1.44	8.21	14.5						
85	15.2	13.1	7.16	0.52	6.64	12.1	14.8	12.5	6.62	0.32	7.14	13.4						
90	14.1	12.0	6.31	0.35	5.79	11.1	13.7	11.4	5.74	0.25	6.29	12.4						
95	13.0	11.0	5.61	0.36	5.15	10.1	12.6	10.5	5.08	0.26	5.55	11.4						
100	11.7	9.12	5.06	0.40	4.70	8.48	11.3	8.80	4.60	0.28	4.99	9.49						
105	10.7	8.64	4.27	0.41	3.57	8.07	10.4	8.31	3.59	0.30	4.22	8.93						
110	9.71	7.95	4.19	0.43	3.46	7.41	9.52	7.56	3.41	0.30	4.09	8.25						
115	8.86	7.35	3.85	0.44	3.14	6.54	8.32	6.88	3.13	0.30	3.55	7.58						
120	8.13	6.84	3.46	0.46	2.92	6.00	7.67	6.33	3.01	0.32	3.39	7.04						
125	7.44	6.34	3.05	0.48	2.78	5.52	7.00	5.73	2.89	0.36	3.04	6.54						
130	6.78	5.62	2.69	0.49	2.61	4.97	6.26	5.19	2.72	0.37	2.71	5.88						
135	6.13	4.58	2.42	0.51	2.56	4.40	5.33	4.60	2.58	0.38	2.35	4.89						
140	5.48	3.70	2.15	0.52	2.35	3.95	4.55	4.11	2.38	0.41	2.06	3.85						
145	4.85	3.15	1.93	0.54	2.16	3.50	3.95	3.62	2.22	0.44	1.84	3.23						
150	4.24	2.62	1.71	0.59	2.02	3.13	3.37	3.23	2.09	0.52	1.63	2.78						
155	3.68	2.18	1.67	0.60	1.82	2.74	3.20	2.82	1.83	0.55	1.63	2.30						
160	3.03	1.81	1.65	0.61	1.55	2.32	2.68	2.44	1.59	0.58	1.61	1.82						
165	2.51	1.52	1.61	0.63	1.31	1.89	2.40	2.06	1.38	0.61	1.53	1.59						
170	1.28	1.39	1.45	0.64	1.07	1.44	1.26	1.61	1.11	0.61	1.42	1.54						
175	1.02	1.15	1.11	0.64	0.73	1.01	1.02	1.20	0.93	0.61	1.11	1.38						
180	0.72	0.70	0.66	0.65	0.67	0.69	0.71	0.71	0.69	0.62	0.63	0.69						

C Range: 0 - 360DEG
C Interval: 30.0DEG
Test Speed: HIGH
Temperature:25.3DEG
Operators:LPC
Test Date:2021-12-09

γ Range: 0 - 180DEG
γ Interval: 1.0DEG
Test System:EVERFINE GO-2000B_V1 SYSTEM V2.0.362
Humidity:65.0%
Test Distance:9.200m [K=1.0000]
Remarks:

Photometric Data Table [cd]

G/C	0.0	30.0	60.0	90.0	120.0	150.0	180.0	210.0	240.0	270.0
0.0	26.43	26.43	26.39	26.37	26.40	26.41	26.43	26.43	26.39	26.37
3.0	26.44	26.43	26.41	26.33	26.37	26.32	26.38	26.41	26.32	26.36
6.0	26.41	26.37	26.36	26.21	26.21	26.19	26.29	26.29	26.17	26.22
9.0	26.34	26.26	26.20	26.00	25.98	26.00	26.15	26.11	25.94	25.96
12.0	26.18	26.09	25.91	25.64	25.65	25.76	25.98	25.89	25.60	25.55
15.0	25.99	25.87	25.54	25.21	25.24	25.48	25.78	25.62	25.19	25.05
18.0	25.82	25.59	25.09	24.66	24.76	25.18	25.55	25.32	24.68	24.48
21.0	25.65	25.26	24.56	24.06	24.23	24.87	25.33	24.97	24.15	23.75
24.0	25.45	24.94	23.96	23.34	23.64	24.50	25.10	24.63	23.55	23.03
27.0	25.20	24.61	23.29	22.54	23.00	24.10	24.83	24.26	22.91	22.16
30.0	24.91	24.23	22.57	21.70	22.32	23.64	24.51	23.83	22.23	21.28
33.0	24.58	23.79	21.82	20.76	21.61	23.12	24.14	23.35	21.53	20.33
36.0	24.20	23.30	21.04	19.75	20.85	22.55	23.71	22.81	20.78	19.30
39.0	23.76	22.78	20.25	18.71	20.04	21.96	23.25	22.23	19.98	18.20
42.0	23.28	22.22	19.45	17.61	19.20	21.33	22.80	21.61	19.16	17.06
45.0	22.78	21.63	18.61	16.46	18.30	20.74	22.39	21.00	18.28	15.91
48.0	22.32	20.99	17.74	15.26	17.36	20.15	21.98	20.44	17.36	14.62
51.0	21.85	20.35	16.87	14.02	16.41	19.52	21.50	19.83	16.41	13.44
54.0	21.33	19.73	15.94	12.76	15.41	18.85	20.99	19.22	15.43	12.11
57.0	20.78	19.10	15.00	11.49	14.43	18.18	20.44	18.56	14.44	10.81
60.0	20.23	18.43	14.04	10.16	13.47	17.47	19.87	17.88	13.48	9.522
63.0	19.65	17.76	13.07	8.826	12.52	16.82	19.32	17.20	12.54	8.196
66.0	19.08	17.09	12.12	7.510	11.58	16.13	18.74	16.54	11.61	6.879
69.0	18.51	16.44	11.23	6.183	10.64	15.47	18.15	15.86	10.68	5.627
72.0	17.92	15.79	10.35	4.881	9.729	14.81	17.55	15.21	9.761	4.406
75.0	17.32	15.16	9.492	3.671	8.894	14.18	16.95	14.57	8.913	3.165
78.0	16.72	14.51	8.702	2.520	8.114	13.54	16.34	13.94	8.134	2.054
81.0	16.09	13.89	7.993	1.510	7.430	12.90	15.71	13.32	7.421	1.173
84.0	15.45	13.28	7.355	0.7417	6.812	12.32	15.05	12.69	6.798	0.4044
87.0	14.79	12.66	6.797	0.3567	6.274	11.68	14.39	12.06	6.255	0.2516
90.0	14.11	12.00	6.314	0.3518	5.786	11.07	13.71	11.45	5.743	0.2471
93.0	13.44	11.39	5.871	0.3568	5.379	10.50	13.05	10.84	5.326	0.2558
96.0	12.78	10.80	5.485	0.3620	5.052	9.954	12.40	10.27	4.974	0.2645
99.0	12.12	9.620	5.153	0.3871	4.785	9.613	11.67	9.096	4.693	0.2732
102.0	11.27	8.985	4.851	0.4072	4.405	8.352	10.96	8.600	4.378	0.2864
105.0	10.67	8.638	4.273	0.4147	3.575	8.070	10.41	8.313	3.588	0.2972
108.0	10.09	8.216	4.237	0.4223	3.478	7.673	9.878	7.912	3.552	0.2982
111.0	9.531	7.829	4.047	0.4298	3.408	7.045	9.326	7.335	3.336	0.2993
114.0	9.028	7.472	3.840	0.4406	3.172	6.663	8.496	7.027	3.161	0.3004
117.0	8.556	7.146	3.809	0.4531	3.031	6.306	8.050	6.705	3.045	0.3015
120.0	8.128	6.844	3.460	0.4574	2.920	6.000	7.673	6.333	3.010	0.3216
123.0	7.711	6.548	3.222	0.4704	2.835	5.719	7.281	5.967	2.955	0.3416
126.0	7.314	6.231	2.971	0.4788	2.754	5.417	6.863	5.595	2.849	0.3645
129.0	6.912	5.853	2.760	0.4853	2.624	5.085	6.421	5.278	2.754	0.3686
132.0	6.525	5.175	2.574	0.4976	2.594	4.768	5.898	4.986	2.653	0.3727
135.0	6.128	4.576	2.418	0.5127	2.563	4.397	5.333	4.605	2.578	0.3769
138.0	5.746	3.974	2.252	0.5177	2.468	4.115	4.823	4.343	2.467	0.3920
141.0	5.359	3.562	2.101	0.5227	2.317	3.859	4.452	3.972	2.357	0.4170
144.0	4.982	3.241	1.971	0.5328	2.187	3.528	4.075	3.685	2.251	0.4322
147.0	4.605	2.929	1.840	0.5530	2.116	3.362	3.532	3.468	2.151	0.4472
150.0	4.243	2.618	1.714	0.5896	2.016	3.125	3.372	3.232	2.085	0.5174
153.0	3.906	2.326	1.658	0.5943	1.900	2.879	3.381	2.991	1.954	0.5427
156.0	3.574	2.095	1.663	0.5989	1.765	2.648	3.100	2.745	1.779	0.5528
159.0	3.178	1.874	1.655	0.6036	1.594	2.397	2.833	2.518	1.643	0.5628
162.0	2.861	1.678	1.646	0.6082	1.433	2.170	2.612	2.362	1.502	0.6080
165.0	2.514	1.518	1.608	0.6283	1.307	1.894	2.396	2.062	1.377	0.6080
168.0	1.393	1.462	1.513	0.6328	1.177	1.632	1.307	1.649	1.206	0.6081
171.0	1.237	1.362	1.413	0.6373	1.016	1.346	1.231	1.514	1.075	0.6081
174.0	1.056	1.196	1.267	0.6418	0.8054	1.080	1.080	1.267	0.9744	0.6081
177.0	0.9702	0.8940	0.9053	0.6433	0.7137	0.6985	0.9343	1.051	0.7532	0.6081
180.0	0.7237	0.7036	0.6634	0.6533	0.6684	0.6885	0.7086	0.7137	0.6936	0.6232
G/C	300.0	330.0								
0.0	26.40	26.41								
3.0	26.37	26.45								
6.0	26.28	26.43								
9.0	26.12	26.38								
12.0	25.81	26.22								
15.0	25.42	25.98								
18.0	24.95	25.67								
21.0	24.39	25.31								
24.0	23.74	24.97								
27.0	23.04	24.65								
30.0	22.30	24.31								

C Range: 0 - 360DEG
 C Interval: 30.0DEG
 Test Speed: HIGH
 Temperature: 25.3DEG
 Operators: LPC
 Test Date: 2021-12-09

γ Range: 0 - 180DEG
 γ Interval: 1.0DEG
 Test System: EVERFINE GO-2000B_V1 SYSTEM V2.0.362
 Humidity: 65.0%
 Test Distance: 9.200m [K=1.0000]
 Remarks:

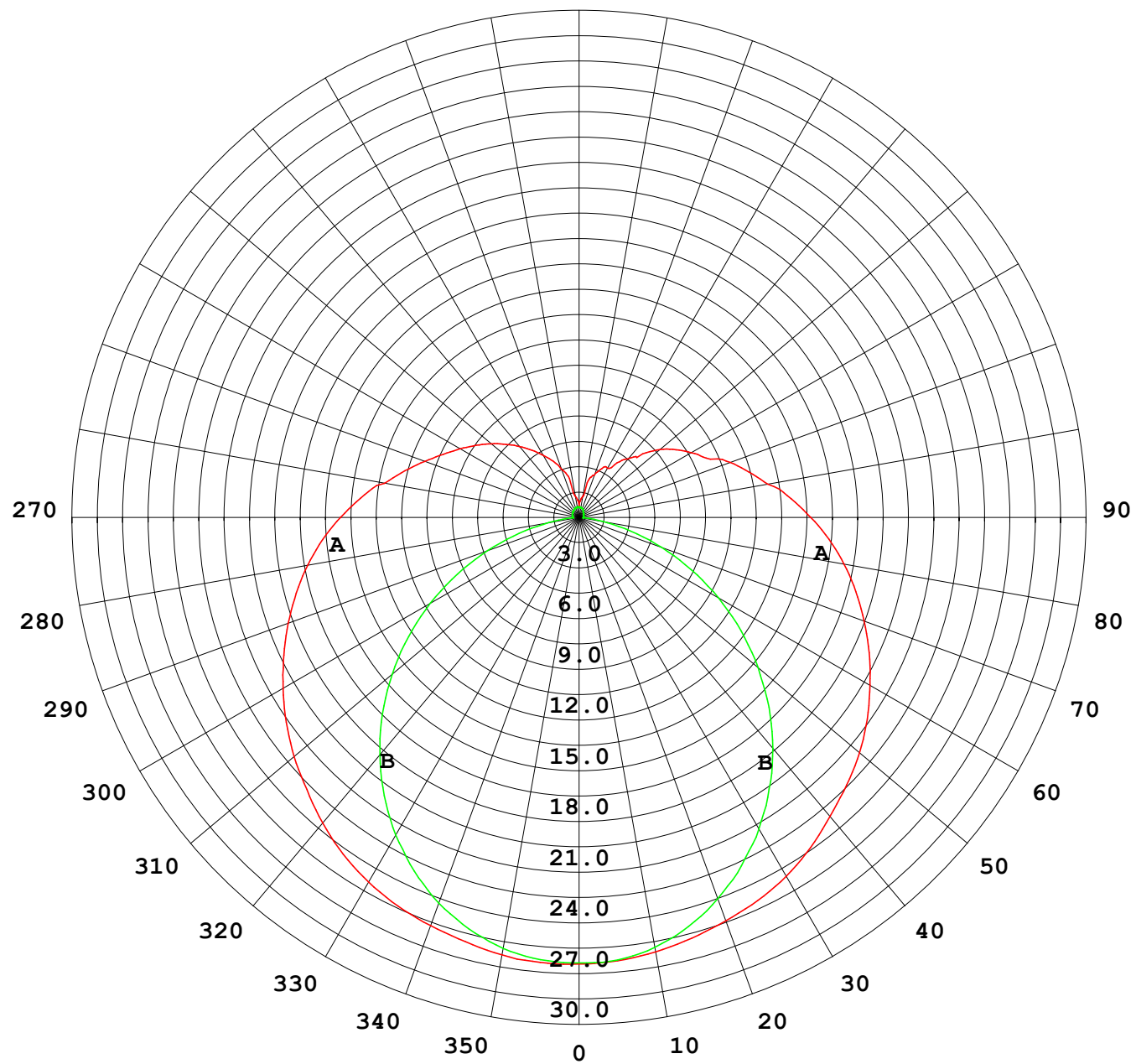
Photometric Data Table [cd]

33.0	21.52	23.93
36.0	20.76	23.49
39.0	20.00	22.99
42.0	19.25	22.45
45.0	18.47	21.89
48.0	17.67	21.27
51.0	16.80	20.62
54.0	15.89	20.01
57.0	14.96	19.39
60.0	14.01	18.74
63.0	13.05	18.08
66.0	12.11	17.42
69.0	11.22	16.77
72.0	10.33	16.12
75.0	9.486	15.49
78.0	8.702	14.86
81.0	7.983	14.24
84.0	7.340	13.62
87.0	6.768	12.98
90.0	6.285	12.38
93.0	5.818	11.76
96.0	5.421	11.15
99.0	5.095	10.04
102.0	4.793	9.278
105.0	4.221	8.927
108.0	4.131	8.545
111.0	4.064	8.108
114.0	3.936	7.705
117.0	3.648	7.359
120.0	3.391	7.042
123.0	3.186	6.735
126.0	2.970	6.444
129.0	2.773	6.082
132.0	2.577	5.460
135.0	2.346	4.892
138.0	2.161	4.213
141.0	2.020	3.745
144.0	1.889	3.348
147.0	1.748	3.046
150.0	1.633	2.780
153.0	1.626	2.494
156.0	1.633	2.202
159.0	1.633	1.926
162.0	1.558	1.709
165.0	1.528	1.588
168.0	1.477	1.588
171.0	1.366	1.523
174.0	1.240	1.418
177.0	0.8086	1.147
180.0	0.6282	0.6885

C Range: 0 - 360DEG
 C Interval: 30.0DEG
 Test Speed: HIGH
 Temperature: 25.3DEG
 Operators: LPC
 Test Date: 2021-12-09

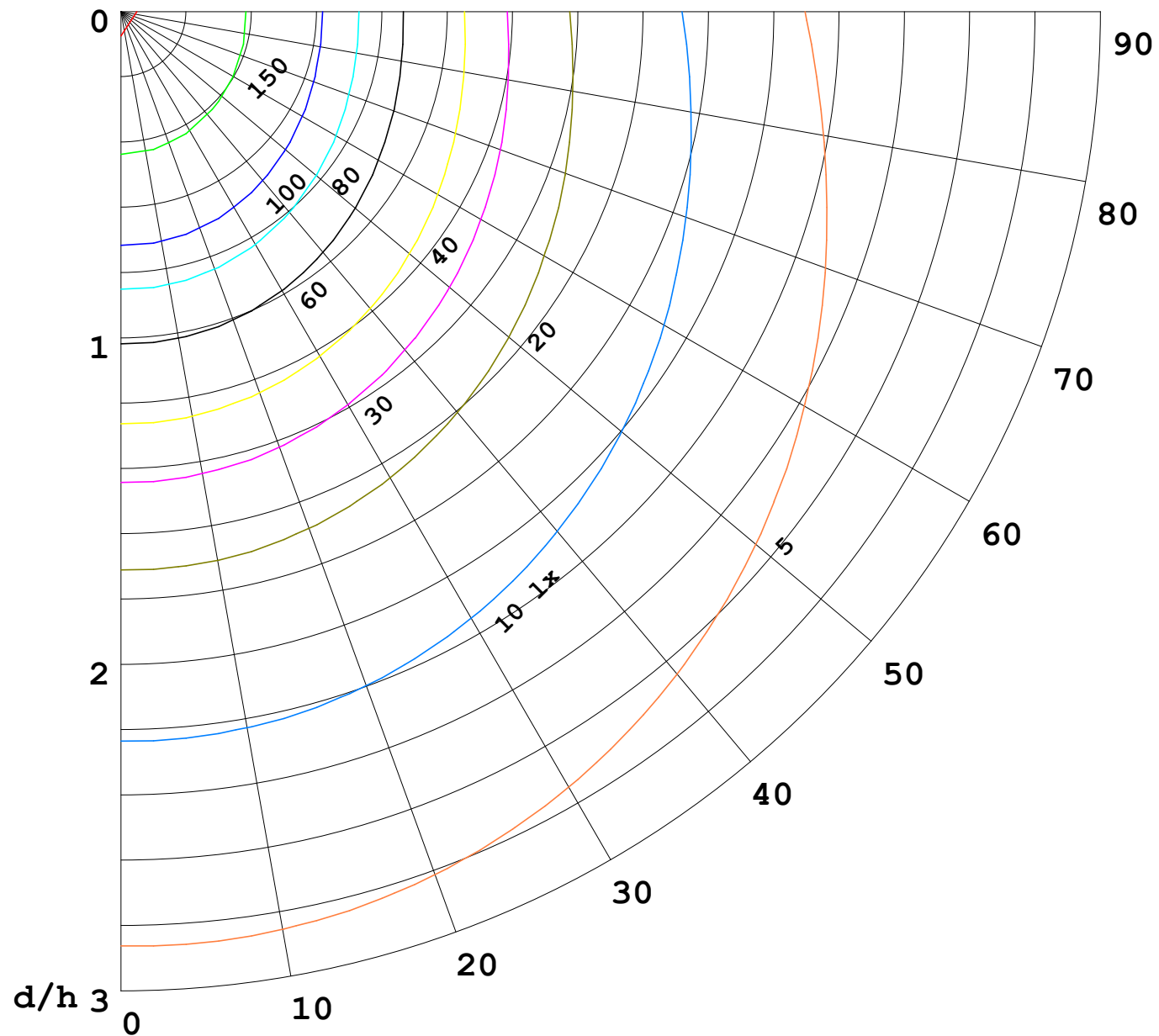
γ Range: 0 - 180DEG
 γ Interval: 1.0DEG
 Test System: EVERFINE GO-2000B_V1 SYSTEM V2.0.362
 Humidity: 65.0%
 Test Distance: 9.200m [K=1.0000]
 Remarks:

I (cd)



1000 lm

$\kappa = 1$



F = 5000 lm
 K = 0.7
 Hcc = 0.0 m
 Hfc = 0.0 m
 Eave = 100 lx

	Pcc	Pw	Pfc
—	70	50	30
—	50	30	20

