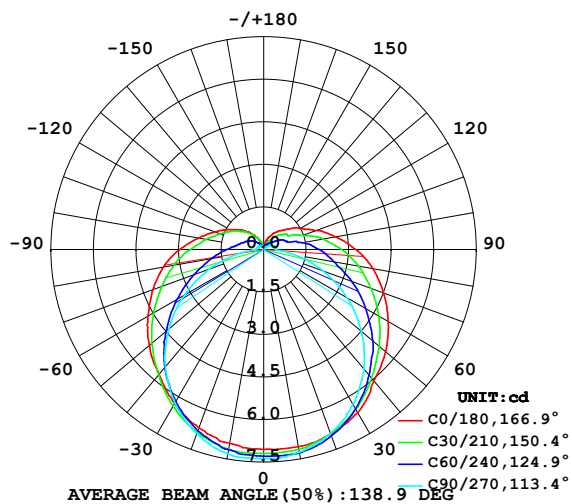


LUMINAIRE PHOTOMETRIC TEST REPORT

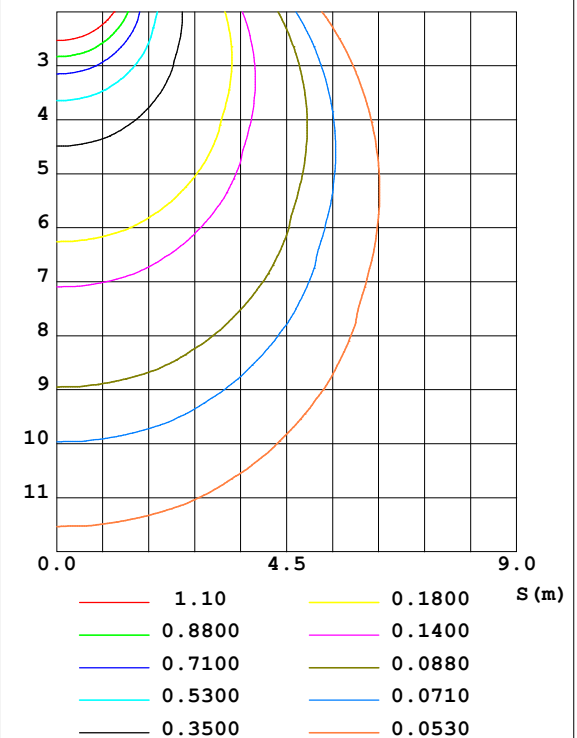
Test:U:24.00V I:0.2370A P:5.688W PF:1.000 Lamp Flux:33.4725x1 lm		
NAME: SF21-24V-5050-70-SPI4-RGBW-5000K-R	TYPE: 硅胶	WEIGHT:
DIM.: 28MM*11.5MM	SPEC.:	SERIAL No.:202303006
MFR.: OLYMPIA	SUR.:1.0*0.0115	PROTECTION ANGLE:

DATA OF LAMP		PHOTOMETRIC DATA				Eff: 5.89 lm/W
MODEL	5050	I _{max} (cd)	7.535	S/MH (C0/180)	1.40	
NOMINAL POWER (W)	18	LOR (%)	100.0	S/MH (C90/270)	1.27	
RATED VOLTAGE (V)	24	TOTAL FLUX (lm)	33.473	η UP, DN (C0-180)	9.0, 41.4	
NOMINAL FLUX (lm)	33.4725	CIE CLASS	SEMI-D.	η UP, DN (C180-360)	9.0, 40.5	
LAMPS INSIDE	1	η up (%)	18.0	CIBSE SHR NOM	1.50	
TEST VOLTAGE (V)	24.0	η down (%)	82.0	CIBSE SHR MAX	1.55	

LUMINOUS INTENSITY DISTRIBUTION DIAGRAM



C0 PLANE ISOLUX DIAGRAM (UNIT: lx)



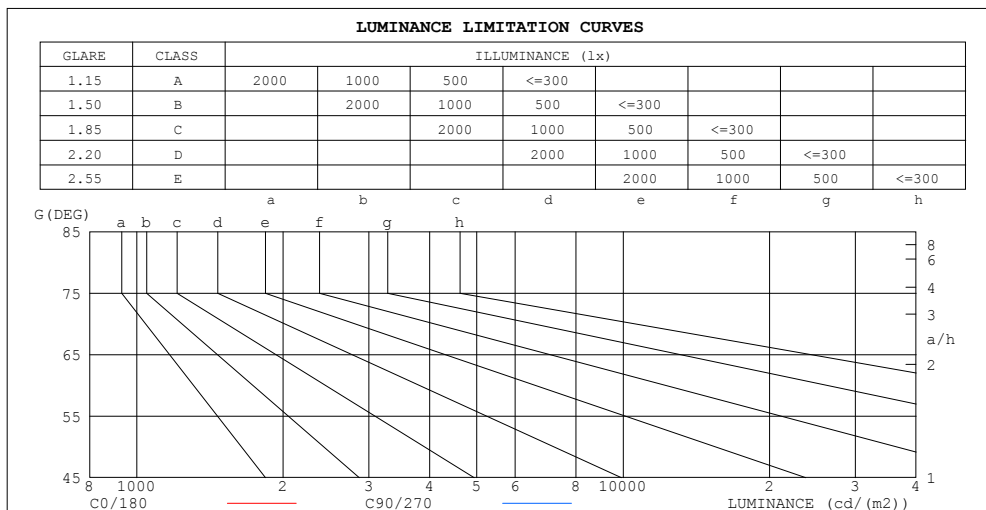
C Range: 0 - 360DEG
C Interval: 30.0DEG
Test Speed: HIGH
Temperature: 25.3DEG
Operators: WFW
Test Date: 2023-03-04

γ Range: 0 - 180DEG
γ Interval: 1.0DEG
Test System: EVERFINE GO-2000B_V1 SYSTEM V2.0.269
Humidity: 65.0%
Test Distance: 10.800m [K=1.0000]
Remarks:

ZONAL FLUX DIAGRAM
AND LUMINANCE LIMITATION CURVES

ZONAL FLUX DIAGRAM:

γ	C0	C45	C90	C135	C180	C225	C270	C315	γ	Φ zone	Φ total	%lum, lamp
10	7.057	7.220	7.258	7.376	6.946	7.155	7.314	7.449	0- 10	0.6955	0.6955	2.08,2.08
20	6.933	6.954	6.905	7.047	6.697	6.832	6.906	7.185	10- 20	2.014	2.710	8.1,8.1
30	6.635	6.493	6.302	6.524	6.274	6.285	6.255	6.718	20- 30	3.105	5.815	17.4,17.4
40	6.047	5.849	5.498	5.804	5.748	5.596	5.403	6.063	30- 40	3.843	9.657	28.9,28.9
50	5.611	5.170	4.494	4.997	5.270	4.824	4.371	5.243	40- 50	4.174	13.83	41.3,41.3
60	5.070	4.412	3.393	4.169	4.716	4.010	3.228	4.436	50- 60	4.134	17.96	53.7,53.7
70	4.496	3.671	2.229	3.342	4.155	3.220	2.058	3.674	60- 70	3.765	21.73	64.9,64.9
80	3.914	2.954	1.093	2.642	3.587	2.542	0.9011	2.961	70- 80	3.181	24.91	74.4,74.4
90	3.256	2.351	0.4086	1.998	2.957	1.950	0.2840	2.351	80- 90	2.525	27.44	82,82
100	2.584	1.763	0.4017	1.527	2.333	1.503	0.2493	1.776	90-100	1.946	29.38	87.8,87.8
110	1.961	1.177	0.3877	1.198	1.821	1.184	0.2286	1.320	100-110	1.443	30.82	92.1,92.1
120	1.490	0.8347	0.3046	0.9211	1.412	0.9489	0.2147	1.077	110-120	1.034	31.86	95.2,95.2
130	1.136	0.6303	0.1663	0.7131	1.066	0.7271	0.1939	0.8139	120-130	0.7245	32.58	97.3,97.3
140	0.8591	0.4190	0.0831	0.4883	0.7822	0.5161	0.1801	0.5749	130-140	0.4621	33.05	98.7,98.7
150	0.6236	0.2735	0.0831	0.3152	0.5054	0.3324	0.1317	0.3221	140-150	0.2571	33.30	99.5,99.5
160	0.4088	0.1628	0.0831	0.1765	0.2629	0.1975	0.0970	0.1906	150-160	0.1173	33.42	99.8,99.8
170	0.1594	0.1108	0.0831	0.1004	0.0831	0.1108	0.0970	0.1282	160-170	0.0428	33.46	100,100
180	0.1039	0.0970	0.0831	0.1004	0.0831	0.0970	0.0970	0.1004	170-180	0.0100	33.47	100,100
DEG	LUMINOUS INTENSITY:cd									UNIT:lm		



LUMINANCE cd/(m2)		
G (DEG)	C0/180	C90/270
85	412	71
80	225	63
75	163	64
70	131	65
65	113	67
60	101	68
55	93	69
50	87	70
45	83	71

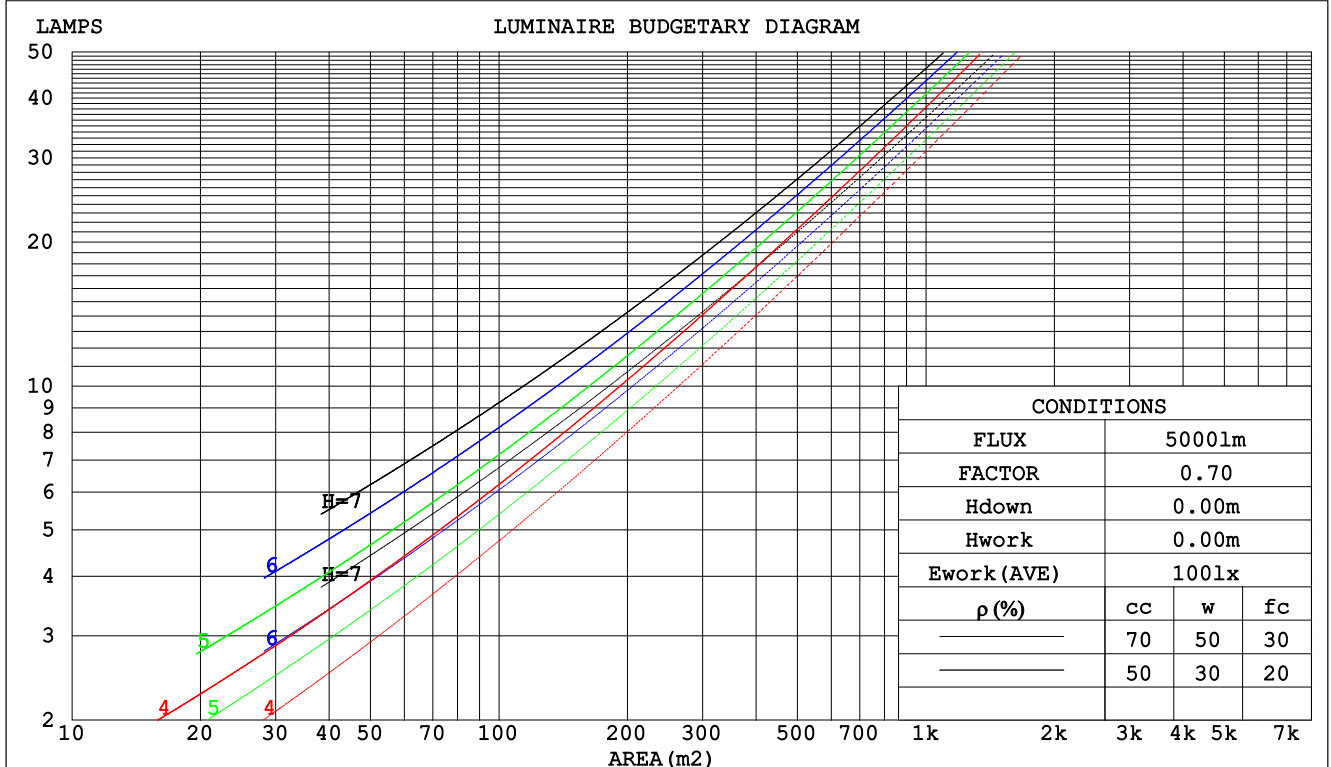
C Range: 0 - 360DEG
C Interval: 30.0DEG
Test Speed: HIGH
Temperature:25.3DEG
Operators:WFW
Test Date:2023-03-04

γ Range: 0 - 180DEG
 γ Interval: 1.0DEG
Test System:EVERFINE GO-2000B_V1 SYSTEM V2.0.269
Humidity:65.0%
Test Distance:10.800m [K=1.0000]
Remarks:

CU AND LUMINAIRE BUDGETARY ESTIMATE DIAGRAM

Test:U:24.00V I:0.2370A P:5.688W PF:1.000 Lamp Flux:33.4725x1 lm		
NAME: SF21-24V-5050-70-SPI4-RGBW-5000K-R	TYPE: 硅胶	WEIGHT:
DIM.: 28MM*11.5MM	SPEC.:	SERIAL No.:202303006
MFR.: OLYMPIA	SUR.:1.0*0.0115	PROTECTION ANGLE:

pcc	80%			70%			50%			30%			10%			0
pw	50%	30%	10%	50%	30%	10%	50%	30%	10%	50%	30%	10%	50%	30%	10%	0
pfc	20%			20%			20%			20%			20%			0
RCR	RCR:Room Cavity Ratio						Coefficients of Utilization(CU)									
0.0	1.15	1.15	1.15	1.10	1.10	1.10	1.01	1.01	1.01	.93	.93	.93	.85	.85	.85	.82
1.0	.96	.90	.85	.92	.87	.82	.84	.80	.76	.77	.74	.71	.70	.68	.66	.62
2.0	.82	.74	.67	.78	.71	.65	.72	.66	.61	.66	.61	.57	.60	.56	.53	.50
3.0	.71	.62	.55	.68	.60	.53	.62	.55	.50	.57	.51	.47	.52	.48	.44	.41
4.0	.62	.53	.46	.60	.51	.44	.55	.48	.42	.50	.44	.39	.46	.41	.37	.34
5.0	.55	.46	.39	.53	.44	.38	.49	.41	.36	.45	.39	.34	.41	.36	.32	.29
6.0	.50	.40	.33	.48	.39	.33	.44	.36	.31	.41	.34	.29	.37	.32	.28	.25
7.0	.45	.36	.29	.43	.35	.29	.40	.32	.27	.37	.30	.26	.34	.28	.24	.22
8.0	.41	.32	.26	.39	.31	.25	.36	.29	.24	.34	.27	.23	.31	.26	.22	.19
9.0	.37	.29	.23	.36	.28	.23	.33	.26	.21	.31	.25	.20	.29	.23	.19	.17
10.0	.34	.26	.21	.33	.25	.20	.31	.24	.19	.29	.23	.18	.27	.21	.18	.16



C Range: 0 - 360DEG
C Interval: 30.0DEG
Test Speed: HIGH
Temperature:25.3DEG
Operators:WFW
Test Date:2023-03-04

γ Range: 0 - 180DEG
γ Interval: 1.0DEG
Test System:EVERFINE GO-2000B_V1 SYSTEM V2.0.269
Humidity:65.0%
Test Distance:10.800m [K=1.0000]
Remarks:

WEC AND CCEC

Test:U:24.00V I:0.2370A P:5.688W PF:1.000 Lamp Flux:33.4725x1 lm					
NAME: SF21-24V-5050-70-SPI4-RGBW-5000K-R			TYPE: 硅胶		WEIGHT:
DIM.: 28MM*11.5MM			SPEC.:		SERIAL No.:202303006
MFR.: OLYMPIA			SUR.:1.0*0.0115		PROTECTION ANGLE:

pcc	80%			70%			50%			30%			10%			0	
pw	50%	30%	10%	50%	30%	10%	50%	30%	10%	50%	30%	10%	50%	30%	10%	0	
pfc	20%			20%			20%			20%			20%			0	
RCR	RCR:Room Cavity Ratio						Wall Exitance Coefficients(WEC)										
0.0																	
1.0	.385	.219	.069	.373	.213	.068	.349	.200	.064	.327	.189	.061	.307	.178	.057		
2.0	.333	.183	.056	.322	.177	.055	.300	.167	.052	.280	.157	.049	.262	.148	.047		
3.0	.296	.157	.047	.286	.153	.046	.266	.144	.044	.248	.136	.042	.231	.128	.040		
4.0	.266	.138	.041	.257	.134	.040	.239	.127	.038	.223	.120	.036	.208	.113	.034		
5.0	.242	.123	.036	.234	.120	.035	.218	.113	.033	.203	.107	.032	.189	.101	.030		
6.0	.222	.111	.032	.214	.108	.031	.199	.102	.030	.186	.097	.028	.173	.091	.027		
7.0	.205	.101	.029	.197	.098	.028	.184	.093	.027	.172	.088	.026	.160	.083	.024		
8.0	.190	.093	.026	.183	.090	.025	.171	.085	.024	.159	.081	.023	.149	.076	.022		
9.0	.177	.086	.024	.171	.083	.023	.160	.079	.022	.149	.075	.021	.139	.071	.020		
10.0	.165	.079	.022	.160	.077	.022	.150	.073	.021	.140	.069	.020	.130	.066	.019		

pcc	80%			70%			50%			30%			10%			0
pw	50%	30%	10%	50%	30%	10%	50%	30%	10%	50%	30%	10%	50%	30%	10%	0
pfc	20%			20%			20%			20%			20%			0
RCR	RCR:Room Cavity Ratio			Ceiling Cavity Exitance Coefficients(CCEC)												
0.0	.328	.328	.328	.280	.280	.280	.191	.191	.191	.110	.110	.110	.035	.035	.035	
1.0	.324	.294	.267	.277	.252	.230	.190	.174	.159	.109	.100	.092	.035	.032	.030	
2.0	.317	.271	.232	.272	.233	.201	.186	.162	.140	.107	.094	.082	.034	.030	.027	
3.0	.310	.255	.211	.266	.220	.183	.182	.153	.128	.105	.089	.076	.034	.029	.025	
4.0	.302	.242	.197	.259	.209	.171	.178	.146	.120	.103	.085	.071	.033	.028	.023	
5.0	.294	.232	.187	.253	.201	.162	.174	.140	.115	.101	.082	.068	.032	.027	.022	
6.0	.287	.224	.180	.246	.194	.157	.170	.136	.111	.099	.080	.066	.032	.026	.022	
7.0	.280	.218	.175	.241	.189	.152	.166	.132	.108	.097	.078	.064	.031	.026	.021	
8.0	.273	.212	.171	.235	.184	.149	.163	.129	.106	.095	.076	.063	.031	.025	.021	
9.0	.267	.207	.168	.230	.180	.146	.159	.127	.104	.093	.075	.062	.030	.025	.020	
10.0	.261	.203	.165	.225	.177	.144	.156	.124	.102	.091	.073	.061	.030	.024	.020	

C Range: 0 - 360DEG
 C Interval: 30.0DEG
 Test Speed: HIGH
 Temperature:25.3DEG
 Operators:WFW
 Test Date:2023-03-04

γ Range: 0 - 180DEG
 γ Interval: 1.0DEG
 Test System:EVERFINE GO-2000B_V1 SYSTEM V2.0.269
 Humidity:65.0%
 Test Distance:10.800m [K=1.0000]
 Remarks:

Uncorrected UGR Table

Test:U:24.00V I:0.2370A P:5.688W PF:1.000 Lamp Flux:33.4725x1 lm												
NAME: SF21-24V-5050-70-SPI4-RGBW-5000K-R					TYPE:硅胶			WEIGHT:				
DIM.: 28MM*11.5MM					SPEC.:			SERIAL No.:202303006				
MFR.: OLYMPIA					SUR.:1.0*0.0115			PROTECTION ANGLE:				
ceiling/cavity	0.7	0.7	0.5	0.5	0.3	0.7	0.7	0.5	0.5	0.3		
walls	0.5	0.3	0.5	0.3	0.3	0.5	0.3	0.5	0.3	0.3		
working plane	0.2	0.2	0.2	0.2	0.2	0.2	0.2	0.2	0.2	0.2		
Room dimensions		Viewed crosswise					Viewed endwise					
x = 2H y = 2H	3H	6.5	7.8	7.1	8.3	8.9	4.2	5.5	4.8	6.0	6.6	
	4H	8.0	9.2	8.6	9.8	10.4	5.0	6.2	5.6	6.8	7.4	
	6H	9.7	10.8	10.3	11.4	12.1	5.6	6.8	6.2	7.3	8.0	
	8H	10.6	11.7	11.2	12.3	13.0	5.9	7.0	6.5	7.6	8.2	
	12H	11.7	12.7	12.3	13.3	14.0	6.1	7.2	6.7	7.7	8.4	
	4H	2H	4.5	5.7	5.0	6.2	6.9	3.5	4.7	4.1	5.3	5.9
	3H	7.4	8.4	8.0	9.0	9.7	5.6	6.6	6.2	7.2	7.9	
	4H	9.1	10.0	9.7	10.6	11.4	6.6	7.5	7.2	8.2	8.9	
	6H	10.9	11.8	11.6	12.4	13.2	7.4	8.3	8.1	8.9	9.7	
	8H	12.0	12.8	12.6	13.4	14.2	7.8	8.6	8.5	9.3	10.0	
	12H	13.2	13.9	13.8	14.6	15.4	8.1	8.9	8.8	9.5	10.3	
	8H	4H	9.5	10.3	10.1	10.9	11.7	7.5	8.3	8.1	9.0	9.7
	6H	11.6	12.3	12.3	13.0	13.8	8.8	9.5	9.5	10.2	11.0	
	8H	12.9	13.5	13.6	14.2	15.0	9.4	10.0	10.1	10.7	11.6	
	12H	14.3	14.9	15.0	15.6	16.4	10.0	10.5	10.7	11.3	12.1	
	12H	4H	9.5	10.3	10.2	10.9	11.7	7.8	8.5	8.4	9.2	10.0
	6H	11.8	12.4	12.5	13.1	13.9	9.3	9.9	10.0	10.6	11.4	
	8H	13.1	13.7	13.9	14.4	15.3	10.1	10.6	10.8	11.3	12.2	
Variations with the observer position at spacings:												
S = 1.0H	+ 0.1 / - 0.1					+ 0.1 / - 0.1						
1.5H	+ 0.2 / - 0.2					+ 0.2 / - 0.3						
2.0H	+ 0.2 / - 0.3					+ 0.3 / - 0.4						

CIE Pub.117 Corrected 33.47 lm Total Lamp Luminous Flux. (8log(F/F0) = -11.8)

C Range: 0 - 360DEG
 C Interval: 30.0DEG
 Test Speed: HIGH
 Temperature:25.3DEG
 Operators:WFW
 Test Date:2023-03-04

γ Range: 0 - 180DEG
 γ Interval: 1.0DEG
 Test System:EVERFINE GO-2000B_V1 SYSTEM V2.0.269
 Humidity:65.0%
 Test Distance:10.800m [K=1.0000]
 Remarks:

UTILIZATION FACTORS TABLE

Test:U:24.00V I:0.2370A P:5.688W PF:1.000 Lamp Flux:33.4725x1 lm		
NAME: SF21-24V-5050-70-SPI4-RGBW-5000K-R	TYPE: 硅胶	WEIGHT:
DIM.: 28MM*11.5MM	SPEC.:	SERIAL No.:202303006
MFR.: OLYMPIA	SUR.:1.0*0.0115	PROTECTION ANGLE:

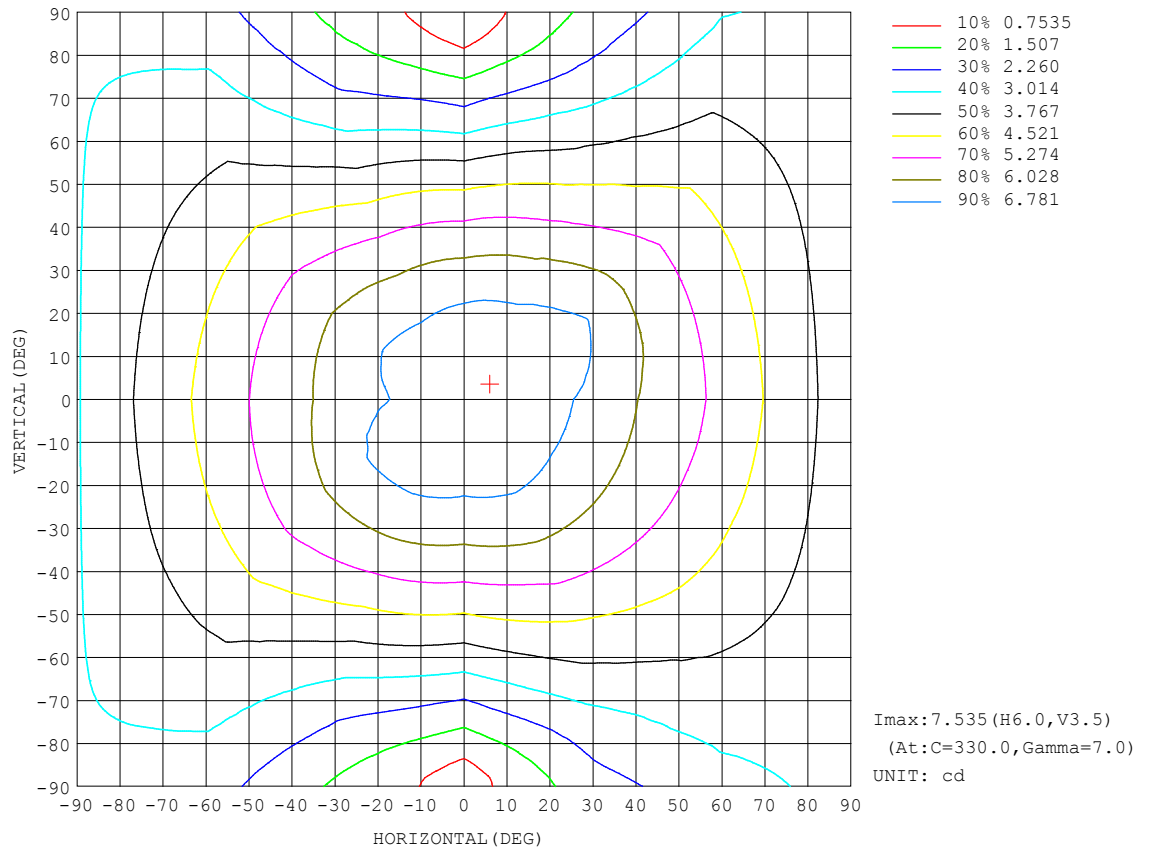
REFLECTANCE										
Ceiling	0.8	0.8	0.8	0.7	0.7	0.7	0.5	0.5	0.5	0
Walls	0.7	0.5	0.3	0.7	0.5	0.3	0.7	0.5	0.3	0
Working plane	0.2	0.2	0.2	0.2	0.2	0.2	0.2	0.2	0.2	0
ROOM INDEX	UTILIZATION FACTORS (PERCENT) $k(RI) \times RCR = 5$									
$k = 0.60$	48	35	28	47	35	28	45	34	28	21
0.80	57	44	36	55	43	36	53	42	35	27
1.00	65	52	43	63	51	43	59	51	42	33
1.25	72	59	50	69	58	50	65	55	48	38
1.50	77	64	56	74	63	55	69	60	53	42
2.00	84	73	65	81	71	63	75	67	60	49
2.50	88	78	70	85	76	68	79	71	65	52
3.00	92	83	75	89	80	73	82	75	69	56
4.00	97	89	82	93	86	80	86	80	75	61
5.00	100	93	87	96	90	84	88	83	79	64
ROOM INDEX	UF (total)									Direct
According to DIN EN 13032-2 2004			Suspended					SHRNM = 1.25		

C Range: 0 - 360DEG
 C Interval: 30.0DEG
 Test Speed: HIGH
 Temperature: 25.3DEG
 Operators: WFW
 Test Date: 2023-03-04

γ Range: 0 - 180DEG
 γ Interval: 1.0DEG
 Test System: EVERFINE GO-2000B_V1 SYSTEM V2.0.269
 Humidity: 65.0%
 Test Distance: 10.800m [K=1.0000]
 Remarks:

ISOCANDELA DIAGRAM

Test:U:24.00V I:0.2370A P:5.688W PF:1.000 Lamp Flux:33.4725x1 lm		
NAME: SF21-24V-5050-70-SPI4-RGBW-5000K-R	TYPE: 硅胶	WEIGHT:
DIM.: 28MM*11.5MM	SPEC.:	SERIAL No.:202303006
MFR.: OLYMPIA	SUR.:1.0*0.0115	PROTECTION ANGLE:

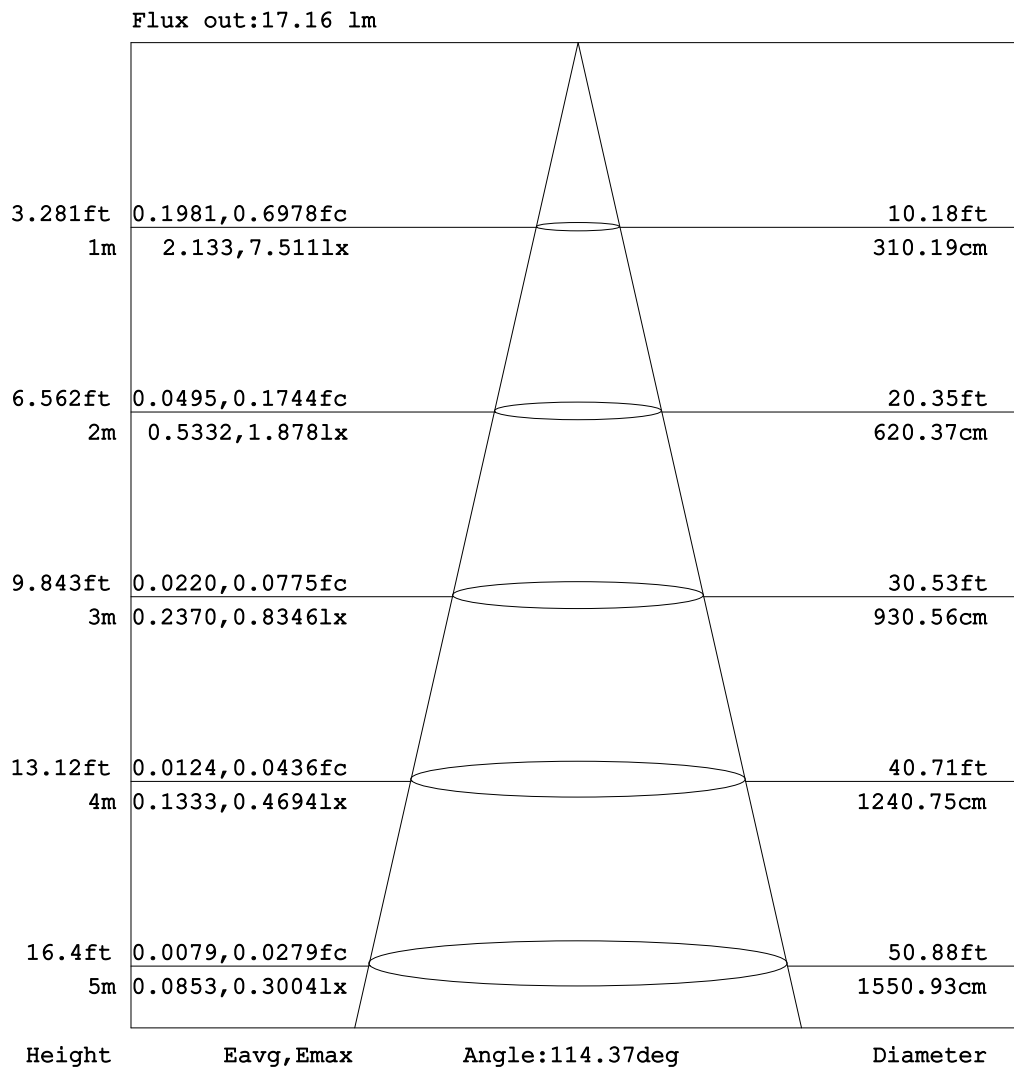


C Range: 0 - 360DEG
C Interval: 30.0DEG
Test Speed: HIGH
Temperature:25.3DEG
Operators:WFW
Test Date:2023-03-04

γ Range: 0 - 180DEG
 γ Interval: 1.0DEG
Test System:EVERFINE GO-2000B_V1 SYSTEM V2.0.269
Humidity:65.0%
Test Distance:10.800m [K=1.0000]
Remarks:

AAI Figure

Test:U:24.00V I:0.2370A P:5.688W PF:1.000 Lamp Flux:33.4725x1 lm		
NAME: SF21-24V-5050-70-SPI4-RGBW-5000K-R	TYPE: 硅胶	WEIGHT:
DIM.: 28MM*11.5MM	SPEC.:	SERIAL No.:202303006
MFR.: OLYMPIA	SUR.:1.0*0.0115	PROTECTION ANGLE:



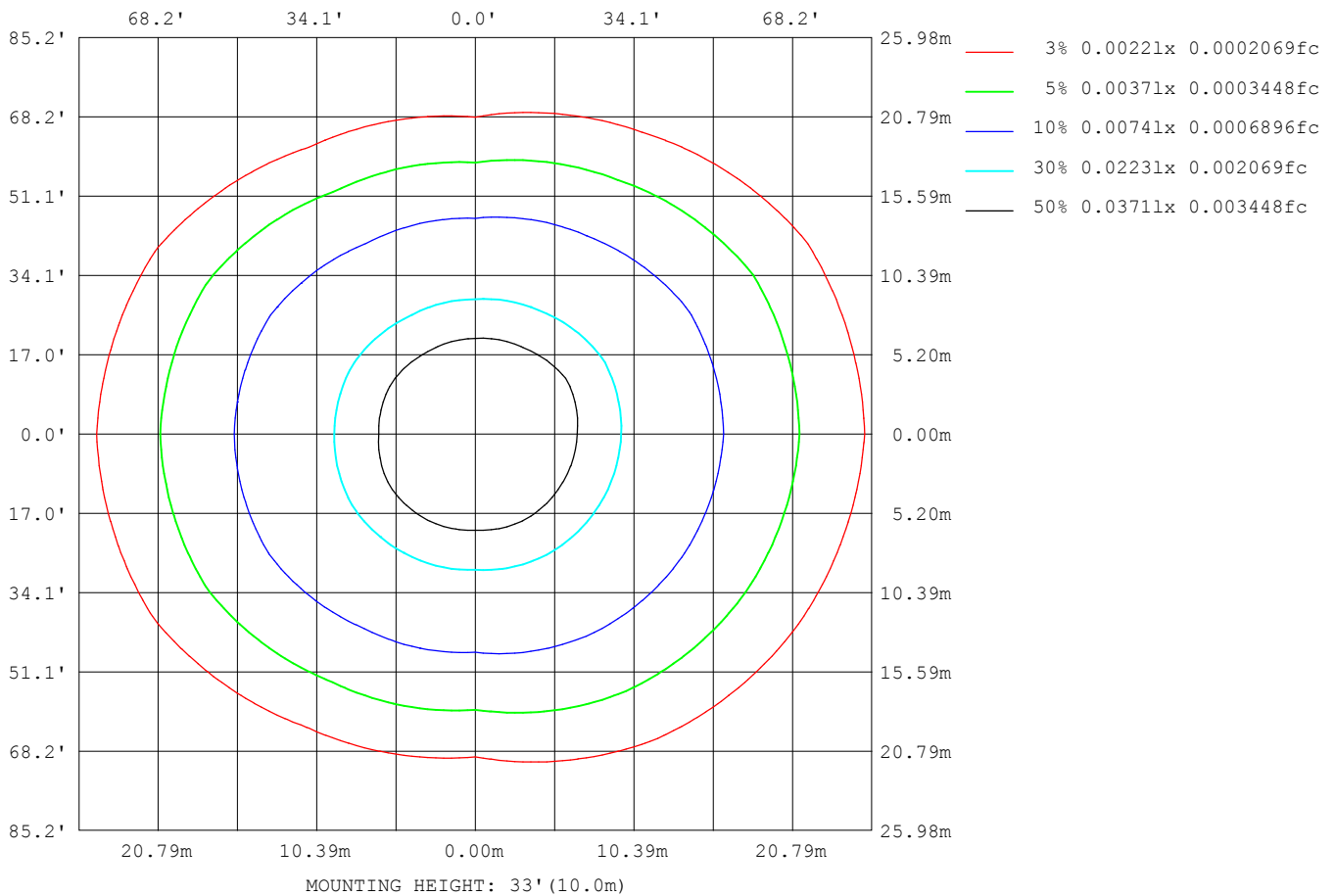
Note:The Curves indicate the illuminated area and the average illumination when the luminaire is at different distance.

C Range: 0 - 360DEG
C Interval: 30.0DEG
Test Speed: HIGH
Temperature:25.3DEG
Operators:WFW
Test Date:2023-03-04

γ Range: 0 - 180DEG
γ Interval: 1.0DEG
Test System:EVERFINE GO-2000B_V1 SYSTEM V2.0.269
Humidity:65.0%
Test Distance:10.800m [K=1.0000]
Remarks:

ISOLUX DIAGRAM

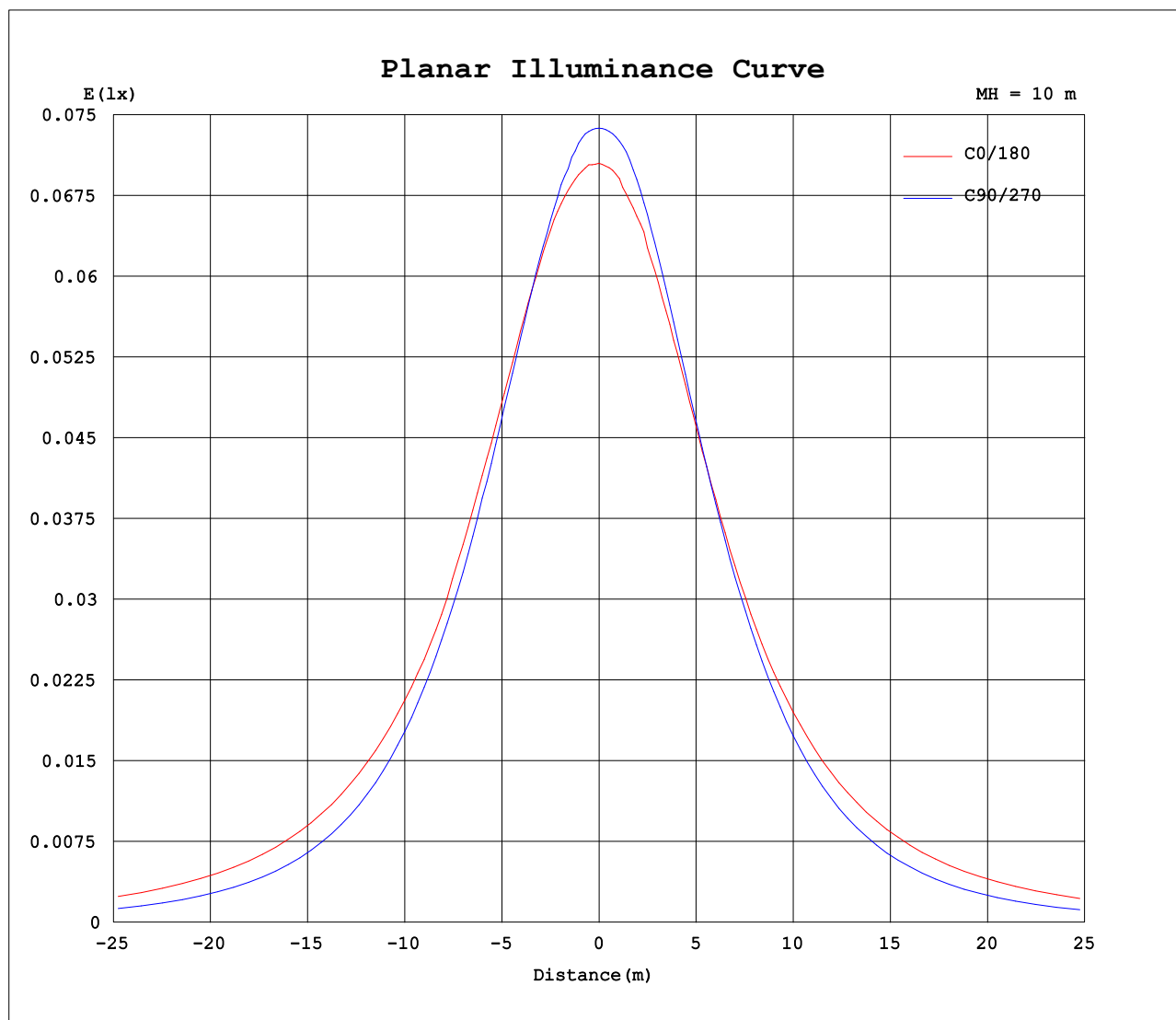
Test:U:24.00V I:0.2370A P:5.688W PF:1.000 Lamp Flux:33.4725x1 lm		
NAME: SF21-24V-5050-70-SPI4-RGBW-5000K-R	TYPE: 硅胶	WEIGHT:
DIM.: 28MM*11.5MM	SPEC.:	SERIAL No.:202303006
MFR.: OLYMPIA	SUR.:1.0*0.0115	PROTECTION ANGLE:



C Range: 0 - 360DEG
C Interval: 30.0DEG
Test Speed: HIGH
Temperature:25.3DEG
Operators:WFW
Test Date:2023-03-04

γ Range: 0 - 180DEG
 γ Interval: 1.0DEG
Test System:EVERFINE GO-2000B_V1 SYSTEM V2.0.269
Humidity:65.0%
Test Distance:10.800m [K=1.0000]
Remarks:

Planar Illuminance Curve



C Range: 0 - 360DEG
C Interval: 30.0DEG
Test Speed: HIGH
Temperature: 25.3DEG
Operators: WFW
Test Date: 2023-03-04

γ Range: 0 - 180DEG
 γ Interval: 1.0DEG
Test System: EVERFINE GO-2000B_V1 SYSTEM V2.0.269
Humidity: 65.0%
Test Distance: 10.800m [K=1.0000]
Remarks:

LUMINOUS DISTRIBUTION INTENSITY DATA

Test:U:24.00V I:0.2370A P:5.688W PF:1.000 Lamp Flux:33.4725x1 lm		
NAME: SF21-24V-5050-70-SPI4-RGBW-5000K-R	TYPE: 硅胶	WEIGHT:
DIM.: 28MM*11.5MM	SPEC.:	SERIAL No.:202303006
MFR.: OLYMPIA	SUR.:1.0*0.0115	PROTECTION ANGLE:

Table--1

UNIT: cd

C (DEG) γ (DEG)	0	30	60	90	120	150	180	210	240	270	300	330						
0	7.05	7.20	7.29	7.38	7.47	7.50	7.05	7.20	7.29	7.38	7.47	7.50						
5	7.06	7.19	7.29	7.37	7.47	7.47	7.03	7.20	7.26	7.38	7.43	7.53						
10	7.06	7.15	7.29	7.26	7.38	7.38	6.95	7.15	7.16	7.31	7.36	7.54						
15	7.03	7.05	7.18	7.10	7.22	7.25	6.84	7.04	7.01	7.15	7.25	7.47						
20	6.93	6.91	7.00	6.90	7.03	7.06	6.70	6.86	6.80	6.91	7.04	7.33						
25	6.79	6.72	6.77	6.64	6.77	6.82	6.50	6.65	6.52	6.60	6.79	7.18						
30	6.64	6.50	6.49	6.30	6.46	6.59	6.27	6.38	6.19	6.25	6.47	6.96						
35	6.39	6.23	6.16	5.91	6.11	6.25	6.03	6.09	5.82	5.84	6.13	6.72						
40	6.05	5.91	5.78	5.50	5.70	5.91	5.75	5.77	5.42	5.40	5.73	6.40						
45	5.84	5.60	5.39	5.02	5.24	5.60	5.52	5.46	4.97	4.90	5.31	5.93						
50	5.61	5.32	5.02	4.49	4.75	5.25	5.27	5.15	4.49	4.37	4.87	5.62						
55	5.35	5.02	4.57	3.95	4.25	4.92	5.00	4.83	4.01	3.81	4.41	5.30						
60	5.07	4.68	4.14	3.39	3.76	4.58	4.72	4.48	3.54	3.23	3.92	4.95						
65	4.79	4.36	3.74	2.82	3.27	4.22	4.44	4.15	3.07	2.64	3.48	4.62						
70	4.50	4.03	3.31	2.23	2.81	3.88	4.15	3.82	2.62	2.06	3.07	4.28						
75	4.21	3.70	2.88	1.66	2.38	3.57	3.87	3.51	2.20	1.45	2.65	3.96						
80	3.91	3.39	2.51	1.09	2.03	3.25	3.59	3.21	1.87	0.90	2.29	3.63						
85	3.59	3.07	2.24	0.62	1.70	2.92	3.29	2.91	1.56	0.47	2.01	3.31						
90	3.26	2.74	1.96	0.41	1.41	2.59	2.96	2.59	1.31	0.28	1.73	2.97						
95	2.91	2.42	1.69	0.41	1.19	2.27	2.64	2.29	1.09	0.27	1.51	2.63						
100	2.58	2.14	1.39	0.40	1.04	2.01	2.33	2.06	0.94	0.25	1.24	2.31						
105	2.28	1.81	1.13	0.40	0.92	1.76	2.08	1.83	0.84	0.23	1.05	2.02						
110	1.96	1.48	0.87	0.39	0.82	1.57	1.82	1.62	0.75	0.23	0.94	1.70						
115	1.70	1.25	0.78	0.33	0.74	1.36	1.61	1.45	0.68	0.21	0.84	1.49						
120	1.49	0.98	0.69	0.30	0.66	1.18	1.41	1.30	0.60	0.21	0.82	1.33						
125	1.35	0.96	0.53	0.27	0.56	1.05	1.23	1.16	0.52	0.20	0.72	1.17						
130	1.14	0.82	0.44	0.17	0.48	0.95	1.07	1.00	0.45	0.19	0.62	1.01						
135	0.96	0.71	0.37	0.10	0.41	0.77	0.93	0.87	0.39	0.18	0.59	0.88						
140	0.86	0.55	0.29	0.08	0.34	0.64	0.78	0.73	0.30	0.18	0.49	0.66						
145	0.73	0.43	0.25	0.08	0.28	0.51	0.64	0.62	0.26	0.17	0.37	0.48						
150	0.62	0.33	0.21	0.08	0.22	0.41	0.51	0.49	0.17	0.13	0.20	0.44						
155	0.50	0.24	0.18	0.08	0.18	0.30	0.37	0.39	0.11	0.10	0.15	0.35						
160	0.41	0.16	0.17	0.08	0.14	0.21	0.26	0.30	0.10	0.10	0.10	0.28						
165	0.30	0.10	0.15	0.08	0.10	0.14	0.15	0.21	0.10	0.10	0.09	0.21						
170	0.16	0.09	0.13	0.08	0.10	0.10	0.08	0.12	0.10	0.10	0.09	0.17						
175	0.12	0.09	0.12	0.08	0.10	0.10	0.08	0.11	0.10	0.10	0.09	0.13						
180	0.10	0.10	0.09	0.08	0.10	0.10	0.08	0.10	0.10	0.10	0.09	0.11						

C Range: 0 - 360DEG
C Interval: 30.0DEG
Test Speed: HIGH
Temperature:25.3DEG
Operators:WFW
Test Date:2023-03-04

γ Range: 0 - 180DEG
γ Interval: 1.0DEG
Test System:EVERFINE GO-2000B_V1 SYSTEM V2.0.269
Humidity:65.0%
Test Distance:10.800m [K=1.0000]
Remarks:

Photometric Data Table [cd]

G/C	0.0	30.0	60.0	90.0	120.0	150.0	180.0	210.0	240.0	270.0
0.0	7.050	7.196	7.286	7.376	7.473	7.501	7.050	7.196	7.286	7.376
3.0	7.064	7.189	7.293	7.376	7.473	7.480	7.037	7.196	7.265	7.376
6.0	7.057	7.175	7.293	7.355	7.459	7.466	7.022	7.196	7.258	7.376
9.0	7.057	7.161	7.293	7.265	7.404	7.390	6.953	7.175	7.175	7.348
12.0	7.057	7.140	7.238	7.196	7.328	7.348	6.933	7.106	7.147	7.265
15.0	7.030	7.050	7.175	7.099	7.224	7.251	6.836	7.037	7.008	7.148
18.0	6.961	6.967	7.072	7.001	7.113	7.140	6.745	6.940	6.897	7.016
21.0	6.905	6.877	6.954	6.849	6.989	7.015	6.642	6.822	6.738	6.850
24.0	6.822	6.780	6.816	6.690	6.829	6.911	6.551	6.684	6.572	6.677
27.0	6.732	6.635	6.663	6.503	6.657	6.725	6.406	6.545	6.392	6.469
30.0	6.635	6.496	6.490	6.302	6.463	6.586	6.274	6.379	6.191	6.255
33.0	6.490	6.350	6.289	6.080	6.248	6.357	6.136	6.213	5.976	6.012
36.0	6.331	6.163	6.089	5.831	6.019	6.163	5.963	6.033	5.748	5.756
39.0	6.096	5.970	5.860	5.595	5.777	5.956	5.803	5.839	5.505	5.493
42.0	5.950	5.810	5.625	5.325	5.521	5.755	5.658	5.645	5.256	5.223
45.0	5.839	5.602	5.389	5.020	5.237	5.595	5.519	5.458	4.972	4.904
48.0	5.707	5.429	5.195	4.709	4.953	5.388	5.374	5.264	4.688	4.586
51.0	5.562	5.256	4.932	4.390	4.655	5.194	5.215	5.084	4.397	4.254
54.0	5.403	5.069	4.669	4.058	4.351	4.979	5.048	4.890	4.099	3.935
57.0	5.237	4.875	4.399	3.725	4.046	4.792	4.903	4.682	3.815	3.582
60.0	5.070	4.681	4.142	3.393	3.762	4.577	4.716	4.481	3.538	3.228
63.0	4.904	4.487	3.900	3.067	3.457	4.362	4.543	4.267	3.247	2.868
66.0	4.731	4.280	3.651	2.693	3.180	4.148	4.370	4.073	2.970	2.501
69.0	4.558	4.086	3.395	2.354	2.903	3.940	4.217	3.879	2.707	2.162
72.0	4.385	3.912	3.132	2.014	2.633	3.746	4.044	3.699	2.444	1.802
75.0	4.212	3.698	2.875	1.661	2.383	3.573	3.871	3.512	2.202	1.449
78.0	4.031	3.518	2.640	1.322	2.175	3.379	3.711	3.332	2.001	1.123
81.0	3.851	3.345	2.466	0.9826	1.968	3.178	3.532	3.165	1.800	0.7973
84.0	3.658	3.137	2.286	0.7056	1.760	2.984	3.351	2.965	1.620	0.5410
87.0	3.464	2.943	2.134	0.4843	1.573	2.791	3.158	2.792	1.468	0.3606
90.0	3.256	2.742	1.961	0.4086	1.407	2.590	2.957	2.591	1.308	0.2840
93.0	3.048	2.548	1.787	0.4086	1.268	2.396	2.776	2.411	1.164	0.2702
96.0	2.847	2.368	1.663	0.4017	1.157	2.216	2.582	2.244	1.059	0.2564
99.0	2.653	2.174	1.455	0.4017	1.060	2.057	2.396	2.113	0.9625	0.2493
102.0	2.466	2.029	1.240	0.4017	0.9975	1.925	2.243	1.967	0.8932	0.2425
105.0	2.279	1.814	1.130	0.4017	0.9214	1.759	2.084	1.829	0.8379	0.2286
108.0	2.134	1.592	0.8728	0.4017	0.8591	1.627	1.925	1.704	0.7755	0.2286
111.0	1.905	1.406	0.8316	0.3738	0.8105	1.530	1.779	1.586	0.7339	0.2354
114.0	1.753	1.274	0.8035	0.3256	0.7483	1.392	1.648	1.476	0.7130	0.2148
117.0	1.600	1.121	0.7552	0.3116	0.6997	1.288	1.523	1.386	0.6510	0.2147
120.0	1.490	0.9835	0.6859	0.3046	0.6581	1.184	1.412	1.302	0.5956	0.2147
123.0	1.413	0.9834	0.5892	0.2770	0.6026	1.087	1.295	1.212	0.5608	0.2078
126.0	1.303	0.9418	0.5059	0.2700	0.5473	1.045	1.198	1.122	0.5124	0.2008
129.0	1.157	0.8242	0.4434	0.1731	0.4921	0.9420	1.101	1.025	0.4775	0.1939
132.0	1.053	0.7687	0.3881	0.1522	0.4435	0.8585	1.031	0.9422	0.4086	0.1871
135.0	0.9631	0.7061	0.3671	0.1038	0.4087	0.7685	0.9345	0.8660	0.3948	0.1801
138.0	0.9006	0.6093	0.3187	0.0831	0.3604	0.7061	0.8379	0.7828	0.3322	0.1801
141.0	0.8314	0.5193	0.2635	0.0831	0.3325	0.6231	0.7476	0.7136	0.2906	0.1801
144.0	0.7690	0.4706	0.2631	0.0831	0.2911	0.5400	0.6646	0.6443	0.2631	0.1800
147.0	0.6997	0.3809	0.2356	0.0831	0.2633	0.4913	0.6158	0.5611	0.2145	0.1524
150.0	0.6236	0.3323	0.2148	0.0831	0.2218	0.4085	0.5054	0.4918	0.1730	0.1317
153.0	0.5542	0.2700	0.1871	0.0831	0.2009	0.3598	0.4152	0.4365	0.1451	0.1108
156.0	0.4918	0.2283	0.1801	0.0831	0.1664	0.2838	0.3528	0.3810	0.0970	0.1039
159.0	0.4296	0.1730	0.1663	0.0831	0.1456	0.2559	0.2700	0.3187	0.0970	0.0970
162.0	0.3605	0.1524	0.1456	0.0831	0.1248	0.1662	0.2146	0.2565	0.0970	0.0970
165.0	0.2982	0.1038	0.1454	0.0831	0.1041	0.1383	0.1522	0.2078	0.0970	0.0970
168.0	0.2287	0.0900	0.1386	0.0831	0.1039	0.0970	0.0900	0.1663	0.0970	0.0970
171.0	0.1524	0.0900	0.1316	0.0831	0.1039	0.0970	0.0831	0.1247	0.0970	0.0970
174.0	0.1316	0.0900	0.1177	0.0831	0.1039	0.0970	0.0831	0.1108	0.0970	0.0970
177.0	0.1178	0.0900	0.1177	0.0831	0.1039	0.0970	0.0831	0.1108	0.0970	0.0970
180.0	0.1039	0.1039	0.0900	0.0831	0.1039	0.0970	0.0831	0.0970	0.0970	0.0970
G/C	300.0	330.0								
0.0	7.473	7.501								
3.0	7.459	7.514								
6.0	7.417	7.535								
9.0	7.376	7.535								
12.0	7.314	7.528								
15.0	7.251	7.473								
18.0	7.133	7.404								
21.0	6.988	7.307								
24.0	6.835	7.203								
27.0	6.676	7.099								
30.0	6.475	6.961								

C Range: 0 - 360DEG
 C Interval: 30.0DEG
 Test Speed: HIGH
 Temperature: 25.3DEG
 Operators: WFW
 Test Date: 2023-03-04

γ Range: 0 - 180DEG
 γ Interval: 1.0DEG
 Test System: EVERFINE GO-2000B_V1 SYSTEM V2.0.269
 Humidity: 65.0%
 Test Distance: 10.800m [K=1.0000]
 Remarks:

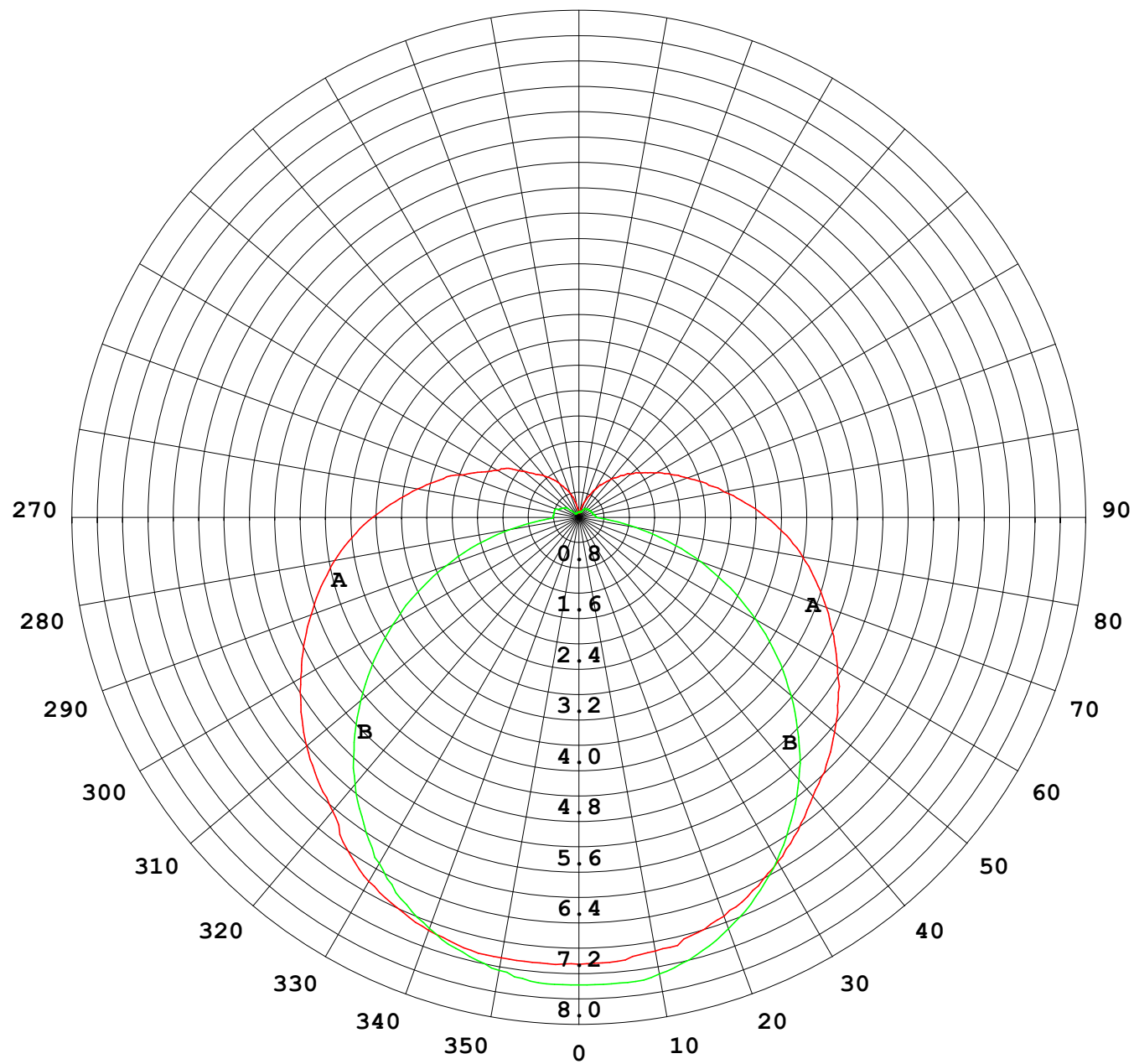
Photometric Data Table [cd]

33.0	6.267	6.829
36.0	6.046	6.656
39.0	5.810	6.469
42.0	5.581	6.248
45.0	5.311	5.929
48.0	5.055	5.728
51.0	4.798	5.555
54.0	4.494	5.368
57.0	4.210	5.167
60.0	3.919	4.952
63.0	3.683	4.759
66.0	3.400	4.558
69.0	3.143	4.343
72.0	2.901	4.142
75.0	2.652	3.955
78.0	2.430	3.754
81.0	2.236	3.567
84.0	2.063	3.373
87.0	1.897	3.173
90.0	1.731	2.972
93.0	1.586	2.771
96.0	1.474	2.570
99.0	1.288	2.369
102.0	1.163	2.203
105.0	1.053	2.016
108.0	0.9762	1.801
111.0	0.9350	1.649
114.0	0.8518	1.531
117.0	0.8450	1.420
120.0	0.8236	1.330
123.0	0.7478	1.240
126.0	0.7061	1.122
129.0	0.6369	1.032
132.0	0.6164	0.9699
135.0	0.5882	0.8798
138.0	0.5122	0.7828
141.0	0.4499	0.6442
144.0	0.3877	0.4850
147.0	0.3254	0.4848
150.0	0.2007	0.4435
153.0	0.1593	0.3464
156.0	0.1383	0.3394
159.0	0.1038	0.2979
162.0	0.0900	0.2495
165.0	0.0900	0.2149
168.0	0.0900	0.1871
171.0	0.0900	0.1662
174.0	0.0900	0.1387
177.0	0.0900	0.1247
180.0	0.0900	0.1108

C Range: 0 - 360DEG
C Interval: 30.0DEG
Test Speed: HIGH
Temperature:25.3DEG
Operators:WFW
Test Date:2023-03-04

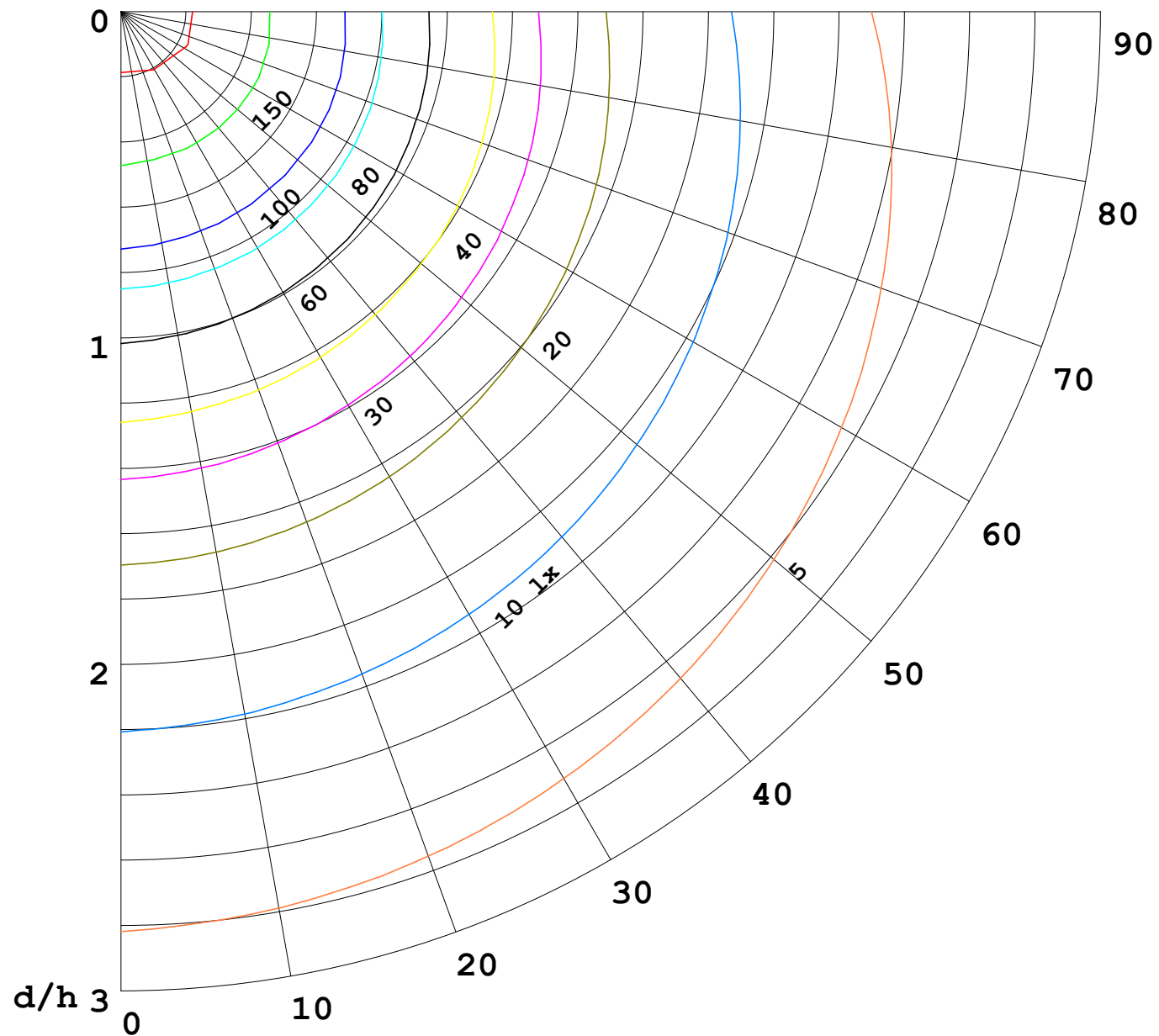
γ Range: 0 - 180DEG
γ Interval: 1.0DEG
Test System:EVERFINE GO-2000B_V1 SYSTEM V2.0.269
Humidity:65.0%
Test Distance:10.800m [K=1.0000]
Remarks:

I (cd)



1000 lm

$\kappa = 1$



F = 5000 lm
 K = 0.7
 Hcc = 0.0 m
 Hfc = 0.0 m
 Eave = 100 lx

	Pcc	Pw	Pfc
—	70	50	30
—	50	30	20

