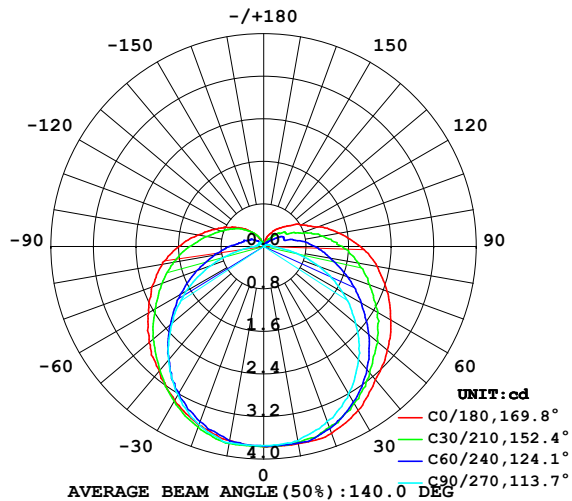


LUMINAIRE PHOTOMETRIC TEST REPORT

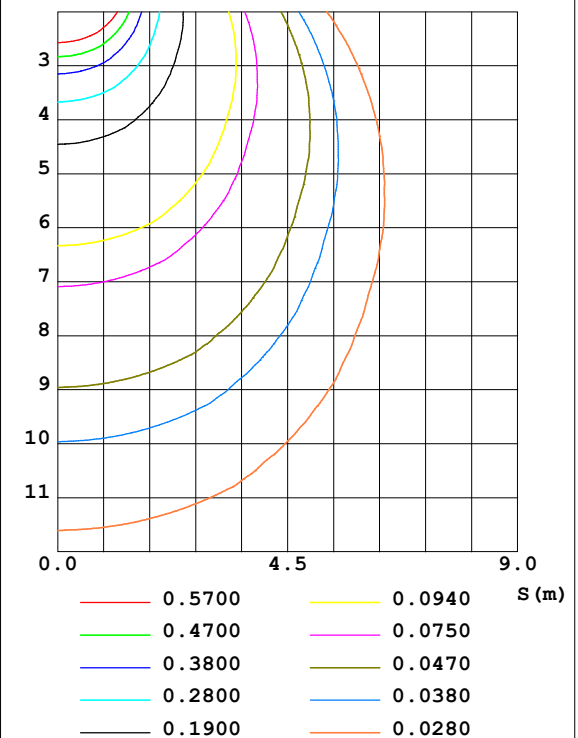
Test:U:24.00V I:0.2381A P:5.714W PF:1.000 Lamp Flux:17.2454x1 lm		
NAME: SF21-24V-5050-70-SPI4-RGBW-5000K-B	TYPE: 硅胶	WEIGHT:
DIM.: 28MM*11.5MM	SPEC.:	SERIAL No.:202303006
MFR.: OLYMPIA	SUR.:1.0*0.0115	PROTECTION ANGLE:

DATA OF LAMP		PHOTOMETRIC DATA				Eff: 3.02 lm/W
MODEL	5050	I _{max} (cd)	3.774	S/MH (C0/180)	1.40	
NOMINAL POWER (W)	18	LOR (%)	100.0	S/MH (C90/270)	1.27	
RATED VOLTAGE (V)	24	TOTAL FLUX (lm)	17.245	η UP, DN (C0-180)	8.5, 41.5	
NOMINAL FLUX (lm)	17.2454	CIE CLASS	SEMI-D.	η UP, DN (C180-360)	8.9, 41.0	
LAMPS INSIDE	1	η up (%)	17.4	CIBSE SHR NOM	1.50	
TEST VOLTAGE (V)	24.0	η down (%)	82.6	CIBSE SHR MAX	1.55	

LUMINOUS INTENSITY DISTRIBUTION DIAGRAM



C0 PLANE ISOLUX DIAGRAM (UNIT:lx)



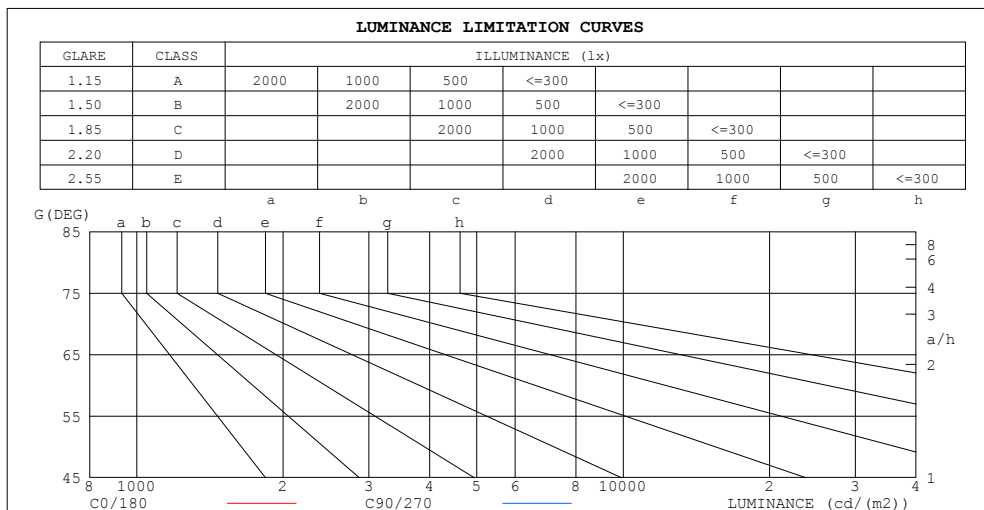
C Range: 0 - 360DEG
C Interval: 30.0DEG
Test Speed: HIGH
Temperature: 25.3DEG
Operators: WFW
Test Date: 2023-03-04

γ Range: 0 - 180DEG
γ Interval: 1.0DEG
Test System: EVERFINE GO-2000B_V1 SYSTEM V2.0.269
Humidity: 65.0%
Test Distance: 10.800m [K=1.0000]
Remarks:

ZONAL FLUX DIAGRAM AND LUMINANCE LIMITATION CURVES

ZONAL FLUX DIAGRAM:

γ	C0	C45	C90	C135	C180	C225	C270	C315	γ	Φ zone	Φ total	%lum, lamp
10	3.768	3.747	3.712	3.726	3.705	3.736	3.747	3.736	0- 10	0.3573	0.3573	2.07,2.07
20	3.740	3.633	3.497	3.553	3.573	3.560	3.560	3.643	10- 20	1.039	1.397	8.1,8.1
30	3.560	3.390	3.199	3.269	3.345	3.276	3.221	3.428	20- 30	1.605	3.002	17.4,17.4
40	3.269	3.061	2.777	2.909	3.054	2.905	2.785	3.117	30- 40	1.989	4.991	28.9,28.9
50	3.034	2.691	2.257	2.490	2.818	2.503	2.252	2.694	40- 50	2.158	7.149	41.5,41.5
60	2.764	2.303	1.703	2.081	2.500	2.084	1.683	2.306	50- 60	2.139	9.287	53.9,53.9
70	2.466	1.901	1.108	1.673	2.243	1.690	1.060	1.929	60- 70	1.958	11.24	65.2,65.2
80	2.168	1.544	0.5121	1.309	1.932	1.330	0.4851	1.583	70- 80	1.665	12.91	74.9,74.9
90	1.822	1.222	0.1593	0.9905	1.599	1.022	0.1595	1.264	80- 90	1.327	14.24	82.6,82.6
100	1.448	0.8935	0.1247	0.7445	1.253	0.7585	0.1385	0.9627	90-100	1.017	15.25	88.5,88.5
110	1.081	0.5748	0.0831	0.5679	0.9624	0.5956	0.1108	0.7099	100-110	0.7388	15.99	92.7,92.7
120	0.8175	0.4329	0.0554	0.4259	0.7201	0.4710	0.1108	0.5679	110-120	0.5215	16.51	95.8,95.8
130	0.6028	0.2909	0.0276	0.3082	0.5400	0.3359	0.1039	0.4362	120-130	0.3581	16.87	97.8,97.8
140	0.4435	0.1799	0	0.2043	0.3668	0.2217	0.1107	0.2667	130-140	0.2173	17.09	99.1,99.1
150	0.3051	0.0866	0	0.1142	0.2008	0.1315	0.0346	0.1178	140-150	0.1073	17.20	99.7,99.7
160	0.1871	0.0415	0	0.0312	0.0623	0.0485	0.0069	0.0554	150-160	0.0386	17.24	99.9,99.9
170	0.0418	0.0173	0	0.0069	0.0069	0.0139	0.0001	0.0208	160-170	0.0090	17.24	100,100
180	0.0208	0.0069	0	0.0104	0	0.0139	0	0.0035	170-180	0.0011	17.25	100,100
DEG	LUMINOUS INTENSITY:cd									UNIT:lm		



LUMINANCE cd/(m2)		
G (DEG)	C0/180	C90/270
85	230	30
80	125	29
75	89	32
70	72	32
65	62	33
60	55	34
55	51	35
50	47	35
45	45	36

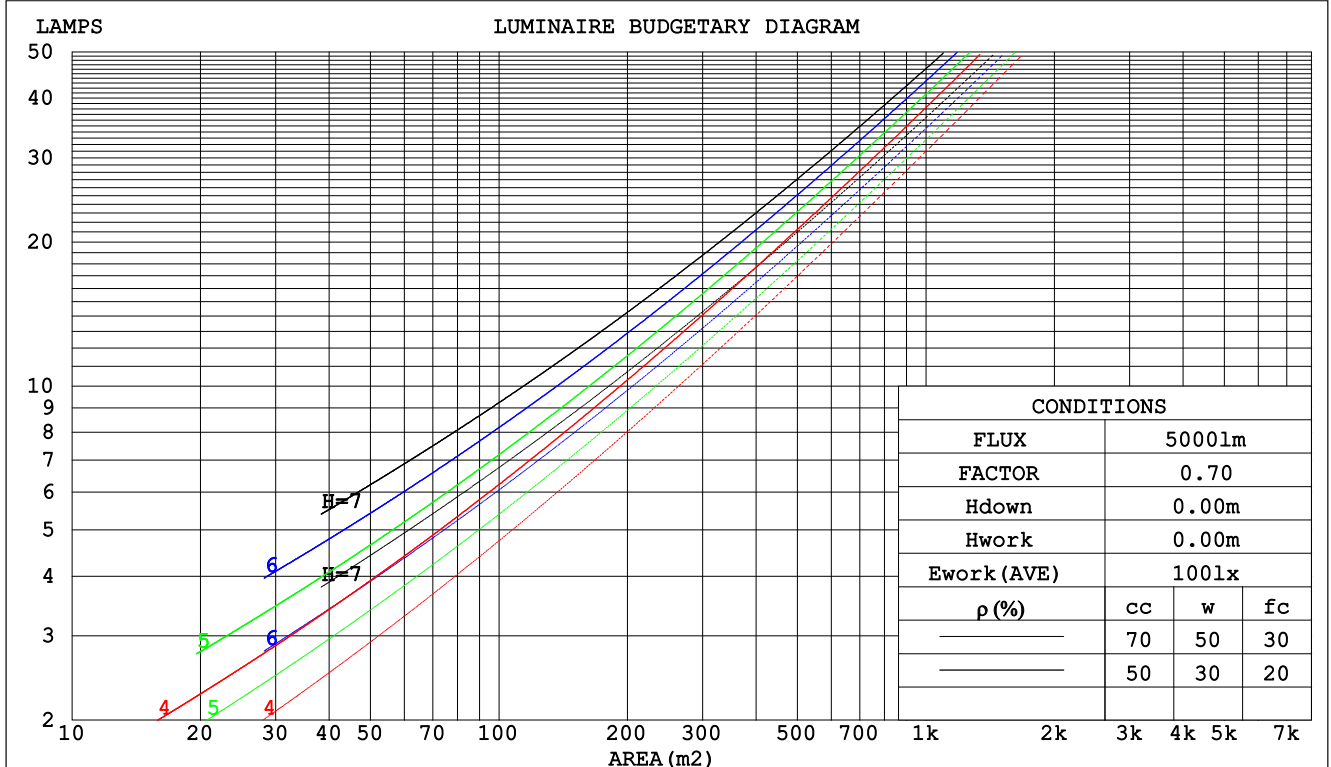
C Range: 0 - 360DEG
C Interval: 30.0DEG
Test Speed: HIGH
Temperature:25.3DEG
Operators:WFW
Test Date:2023-03-04

γ Range: 0 - 180DEG
 γ Interval: 1.0DEG
Test System:EVERFINE GO-2000B_V1 SYSTEM V2.0.269
Humidity:65.0%
Test Distance:10.800m [K=1.0000]
Remarks:

CU AND LUMINAIRE BUDGETARY ESTIMATE DIAGRAM

Test:U:24.00V I:0.2381A P:5.714W PF:1.000 Lamp Flux:17.2454x1 lm		
NAME: SF21-24V-5050-70-SPI4-RGBW-5000K-B	TYPE: 硅胶	WEIGHT:
DIM.: 28MM*11.5MM	SPEC.:	SERIAL No.:202303006
MFR.: OLYMPIA	SUR.:1.0*0.0115	PROTECTION ANGLE:

pcc	80%			70%			50%			30%			10%			0
pw	50%	30%	10%	50%	30%	10%	50%	30%	10%	50%	30%	10%	50%	30%	10%	0
pfc	20%			20%			20%			20%			20%			0
RCR	RCR:Room Cavity Ratio						Coefficients of Utilization(CU)									
0.0	1.15	1.15	1.15	1.10	1.10	1.10	1.01	1.01	1.01	.93	.93	.93	.86	.86	.86	.83
1.0	.96	.90	.85	.92	.87	.82	.84	.80	.76	.77	.74	.71	.71	.68	.66	.62
2.0	.82	.74	.67	.78	.71	.65	.72	.66	.61	.66	.61	.57	.60	.56	.53	.50
3.0	.71	.62	.55	.68	.60	.53	.62	.55	.50	.57	.52	.47	.52	.48	.44	.41
4.0	.62	.53	.46	.60	.51	.44	.55	.48	.42	.50	.44	.39	.46	.41	.37	.34
5.0	.55	.46	.39	.53	.44	.38	.49	.41	.36	.45	.39	.34	.41	.36	.32	.29
6.0	.49	.40	.33	.48	.39	.33	.44	.36	.31	.41	.34	.29	.37	.32	.28	.25
7.0	.45	.36	.29	.43	.34	.28	.40	.32	.27	.37	.30	.26	.34	.29	.24	.22
8.0	.41	.32	.26	.39	.31	.25	.36	.29	.24	.34	.27	.23	.31	.26	.22	.19
9.0	.37	.29	.23	.36	.28	.22	.33	.26	.21	.31	.25	.20	.29	.23	.19	.17
10.0	.34	.26	.21	.33	.25	.20	.31	.24	.19	.29	.23	.18	.27	.21	.18	.16



C Range: 0 - 360DEG
C Interval: 30.0DEG
Test Speed: HIGH
Temperature:25.3DEG
Operators:WFW
Test Date:2023-03-04

γ Range: 0 - 180DEG
γ Interval: 1.0DEG
Test System:EVERFINE GO-2000B_V1 SYSTEM V2.0.269
Humidity:65.0%
Test Distance:10.800m [K=1.0000]
Remarks:

WEC AND CCEC

Test:U:24.00V I:0.2381A P:5.714W PF:1.000 Lamp Flux:17.2454x1 lm					
NAME: SF21-24V-5050-70-SPI4-RGBW-5000K-B			TYPE: 硅胶		WEIGHT:
DIM.: 28MM*11.5MM			SPEC.:		SERIAL No.:202303006
MFR.: OLYMPIA			SUR.:1.0*0.0115		PROTECTION ANGLE:

pcc	80%			70%			50%			30%			10%			0	
pw	50%	30%	10%	50%	30%	10%	50%	30%	10%	50%	30%	10%	50%	30%	10%	0	
pfc	20%			20%			20%			20%			20%			0	
RCR	RCR:Room Cavity Ratio						Wall Exitance Coefficients(WEC)										
0.0																	
1.0	.388	.221	.070	.375	.214	.068	.352	.202	.064	.330	.190	.061	.310	.180	.058		
2.0	.335	.184	.056	.324	.178	.055	.302	.168	.052	.283	.159	.050	.265	.150	.047		
3.0	.297	.158	.047	.287	.154	.046	.268	.145	.044	.250	.137	.042	.233	.129	.040		
4.0	.267	.139	.041	.258	.135	.040	.241	.128	.038	.224	.121	.036	.209	.114	.035		
5.0	.243	.124	.036	.234	.120	.035	.219	.114	.034	.204	.108	.032	.190	.102	.031		
6.0	.222	.111	.032	.215	.108	.031	.200	.103	.030	.187	.097	.029	.174	.092	.027		
7.0	.205	.101	.029	.198	.099	.028	.185	.093	.027	.173	.088	.026	.161	.084	.025		
8.0	.190	.093	.026	.184	.090	.026	.172	.086	.024	.160	.081	.023	.150	.077	.022		
9.0	.177	.086	.024	.171	.083	.023	.160	.079	.022	.150	.075	.021	.140	.071	.021		
10.0	.166	.079	.022	.160	.077	.022	.150	.074	.021	.140	.070	.020	.131	.066	.019		

pcc	80%			70%			50%			30%			10%			0
pw	50%	30%	10%	50%	30%	10%	50%	30%	10%	50%	30%	10%	50%	30%	10%	0
pfc	20%			20%			20%			20%			20%			0
RCR	RCR:Room Cavity Ratio			Ceiling Cavity Exitance Coefficients(CCEC)												
0.0	.323	.323	.323	.276	.276	.276	.189	.189	.189	.108	.108	.108	.035	.035	.035	
1.0	.320	.289	.262	.274	.248	.226	.187	.171	.156	.108	.099	.091	.034	.032	.029	
2.0	.313	.267	.228	.268	.230	.197	.184	.159	.137	.106	.092	.080	.034	.030	.026	
3.0	.305	.250	.206	.262	.216	.179	.180	.150	.125	.104	.088	.074	.033	.028	.024	
4.0	.298	.238	.192	.255	.205	.167	.176	.143	.117	.102	.084	.069	.033	.027	.023	
5.0	.290	.228	.182	.249	.197	.158	.171	.138	.112	.099	.081	.066	.032	.026	.022	
6.0	.282	.220	.175	.243	.190	.152	.167	.133	.108	.097	.078	.064	.031	.026	.021	
7.0	.275	.213	.170	.237	.185	.148	.164	.130	.105	.095	.076	.062	.031	.025	.021	
8.0	.269	.208	.166	.231	.180	.145	.160	.126	.103	.093	.075	.061	.030	.024	.020	
9.0	.262	.203	.163	.226	.176	.142	.157	.124	.101	.091	.073	.060	.030	.024	.020	
10.0	.256	.199	.160	.221	.173	.140	.153	.121	.099	.089	.072	.059	.029	.024	.020	

C Range: 0 - 360DEG
 C Interval: 30.0DEG
 Test Speed: HIGH
 Temperature:25.3DEG
 Operators:WFW
 Test Date:2023-03-04

γ Range: 0 - 180DEG
 γ Interval: 1.0DEG
 Test System:EVERFINE GO-2000B_V1 SYSTEM V2.0.269
 Humidity:65.0%
 Test Distance:10.800m [K=1.0000]
 Remarks:

Uncorrected UGR Table

Test:U:24.00V I:0.2381A P:5.714W PF:1.000 Lamp Flux:17.2454x1 lm											
NAME: SF21-24V-5050-70-SPI4-RGBW-5000K-B					TYPE:硅胶			WEIGHT:			
DIM.: 28MM*11.5MM					SPEC.:			SERIAL No.:202303006			
MFR.: OLYMPIA					SUR.:1.0*0.0115			PROTECTION ANGLE:			
ceiling/cavity	0.7	0.7	0.5	0.5	0.3	0.7	0.7	0.5	0.5	0.3	
walls	0.5	0.3	0.5	0.3	0.3	0.5	0.3	0.5	0.3	0.3	
working plane	0.2	0.2	0.2	0.2	0.2	0.2	0.2	0.2	0.2	0.2	
Room dimensions	Viewed crosswise					Viewed endwise					
x = 2H y = 2H	1.8	3.2	2.3	3.7	4.2	0.1	1.5	0.6	2.0	2.6	
	3H	4.5	5.8	5.0	6.3	6.9	1.8	3.1	2.4	3.6	4.2
	4H	6.1	7.3	6.6	7.8	8.4	2.6	3.8	3.1	4.3	4.9
	6H	7.8	8.9	8.3	9.5	10.1	3.1	4.3	3.7	4.9	5.5
	8H	8.7	9.8	9.3	10.4	11.1	3.4	4.5	3.9	5.0	5.7
	12H	9.8	10.9	10.4	11.5	12.2	3.5	4.6	4.1	5.2	5.8
4H	2H	2.4	3.6	2.9	4.1	4.8	1.2	2.4	1.7	2.9	3.6
	3H	5.3	6.4	5.9	7.0	7.7	3.2	4.3	3.8	4.9	5.5
	4H	7.1	8.0	7.7	8.6	9.3	4.2	5.1	4.8	5.7	6.4
	6H	9.0	9.9	9.6	10.5	11.2	5.0	5.9	5.6	6.5	7.2
	8H	10.1	10.9	10.7	11.5	12.3	5.3	6.1	6.0	6.8	7.5
	12H	11.3	12.1	12.0	12.7	13.5	5.6	6.3	6.2	7.0	7.8
8H	4H	7.4	8.3	8.1	8.9	9.7	5.1	6.0	5.8	6.6	7.4
	6H	9.6	10.3	10.3	11.0	11.8	6.4	7.1	7.1	7.8	8.6
	8H	10.9	11.6	11.6	12.3	13.1	7.0	7.6	7.7	8.3	9.1
	12H	12.4	13.0	13.1	13.7	14.5	7.5	8.0	8.2	8.8	9.6
12H	4H	7.5	8.2	8.1	8.9	9.7	5.4	6.2	6.1	6.9	7.6
	6H	9.8	10.4	10.5	11.1	11.9	6.9	7.5	7.6	8.2	9.0
	8H	11.2	11.7	11.9	12.4	13.3	7.7	8.2	8.4	8.9	9.8
Variations with the observer position at spacings:											
S = 1.0H	+ 0.1 / - 0.1					+ 0.1 / - 0.1					
1.5H	+ 0.2 / - 0.2					+ 0.2 / - 0.3					
2.0H	+ 0.2 / - 0.3					+ 0.3 / - 0.5					

CIE Pub.117 Corrected 17.25 lm Total Lamp Luminous Flux. (8log(F/F0) = -14.1)

C Range: 0 - 360DEG
 C Interval: 30.0DEG
 Test Speed: HIGH
 Temperature:25.3DEG
 Operators:WFW
 Test Date:2023-03-04

γ Range: 0 - 180DEG
 γ Interval: 1.0DEG
 Test System:EVERFINE GO-2000B_V1 SYSTEM V2.0.269
 Humidity:65.0%
 Test Distance:10.800m [K=1.0000]
 Remarks:

UTILIZATION FACTORS TABLE

Test:U:24.00V I:0.2381A P:5.714W PF:1.000 Lamp Flux:17.2454x1 lm		
NAME: SF21-24V-5050-70-SPI4-RGBW-5000K-B	TYPE: 硅胶	WEIGHT:
DIM.: 28MM*11.5MM	SPEC.:	SERIAL No.:202303006
MFR.: OLYMPIA	SUR.:1.0*0.0115	PROTECTION ANGLE:

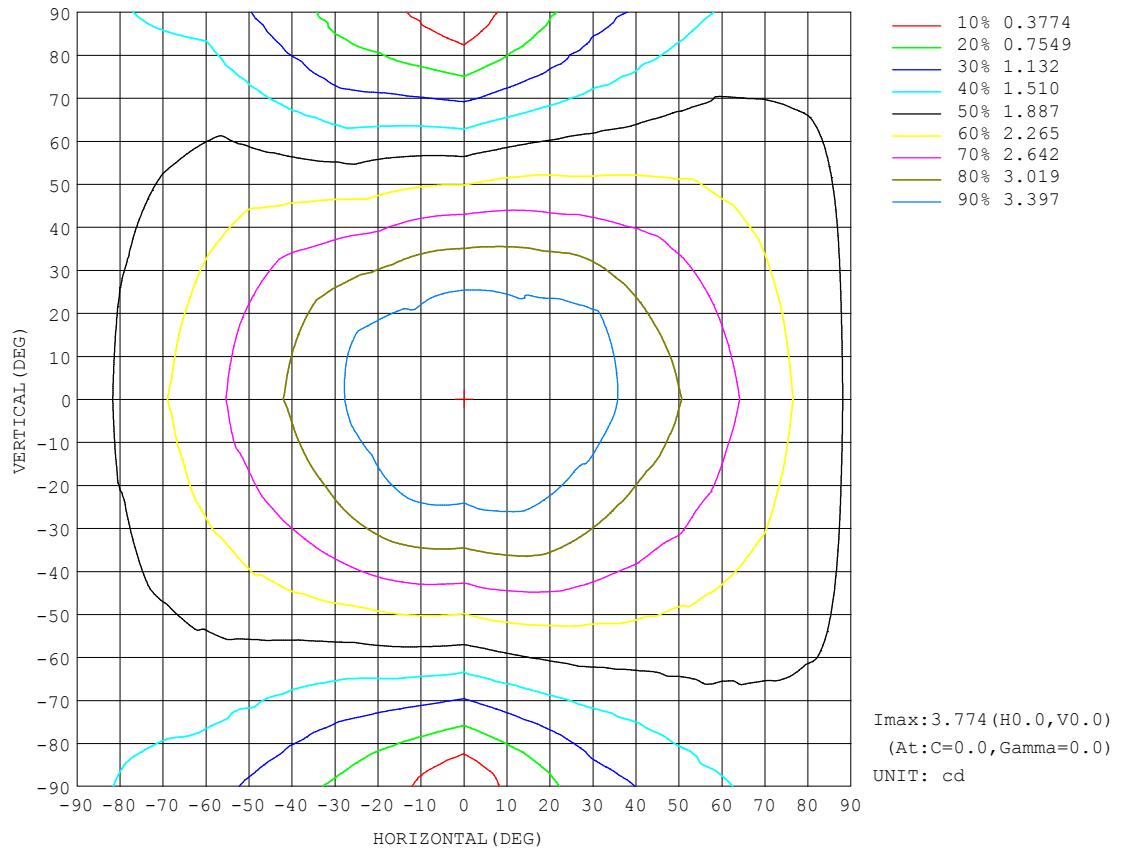
REFLECTANCE										
Ceiling	0.8	0.8	0.8	0.7	0.7	0.7	0.5	0.5	0.5	0
Walls	0.7	0.5	0.3	0.7	0.5	0.3	0.7	0.5	0.3	0
Working plane	0.2	0.2	0.2	0.2	0.2	0.2	0.2	0.2	0.2	0
ROOM INDEX	UTILIZATION FACTORS (PERCENT) $k(RI) \times RCR = 5$									
$k = 0.60$	48	36	28	47	35	28	45	34	28	21
0.80	57	44	36	56	43	36	53	42	35	27
1.00	65	52	43	63	51	43	59	51	42	33
1.25	72	59	50	69	58	50	65	55	48	38
1.50	77	64	56	74	63	55	69	60	53	43
2.00	84	73	65	81	71	63	75	67	60	49
2.50	88	78	70	85	76	69	79	71	65	53
3.00	92	83	75	89	80	73	82	75	70	56
4.00	97	89	82	93	86	80	86	80	75	61
5.00	100	93	87	96	90	84	88	83	79	64
ROOM INDEX	UF(total)									Direct
According to DIN EN 13032-2 2004			Suspended					SHRNM = 1.25		

C Range: 0 - 360DEG
 C Interval: 30.0DEG
 Test Speed: HIGH
 Temperature:25.3DEG
 Operators:WFW
 Test Date:2023-03-04

γ Range: 0 - 180DEG
 γ Interval: 1.0DEG
 Test System:EVERFINE GO-2000B_V1 SYSTEM V2.0.269
 Humidity:65.0%
 Test Distance:10.800m [K=1.0000]
 Remarks:

ISOCANDELA DIAGRAM

Test:U:24.00V I:0.2381A P:5.714W PF:1.000 Lamp Flux:17.2454x1 lm		
NAME: SF21-24V-5050-70-SPI4-RGBW-5000K-B	TYPE: 硅胶	WEIGHT:
DIM.: 28MM*11.5MM	SPEC.:	SERIAL No.:202303006
MFR.: OLYMPIA	SUR.:1.0*0.0115	PROTECTION ANGLE:

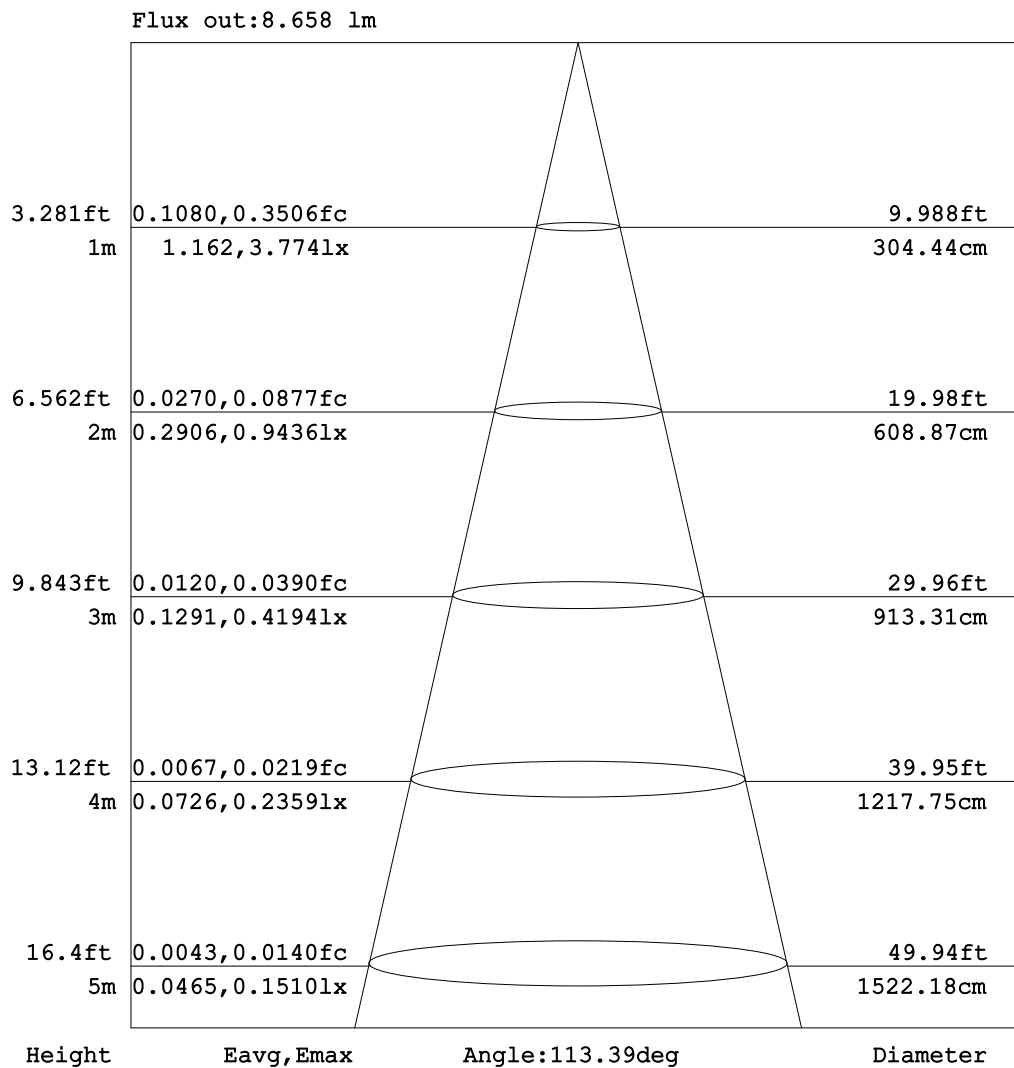


C Range: 0 - 360DEG
C Interval: 30.0DEG
Test Speed: HIGH
Temperature: 25.3DEG
Operators: WFW
Test Date: 2023-03-04

γ Range: 0 - 180DEG
 γ Interval: 1.0DEG
Test System: EVERFINE GO-2000B_V1 SYSTEM V2.0.269
Humidity: 65.0%
Test Distance: 10.800m [K=1.0000]
Remarks:

AAI Figure

Test:U:24.00V I:0.2381A P:5.714W PF:1.000 Lamp Flux:17.2454x1 lm		
NAME: SF21-24V-5050-70-SPI4-RGBW-5000K-B	TYPE: 硅胶	WEIGHT:
DIM.: 28MM*11.5MM	SPEC.:	SERIAL No.:202303006
MFR.: OLYMPIA	SUR.:1.0*0.0115	PROTECTION ANGLE:



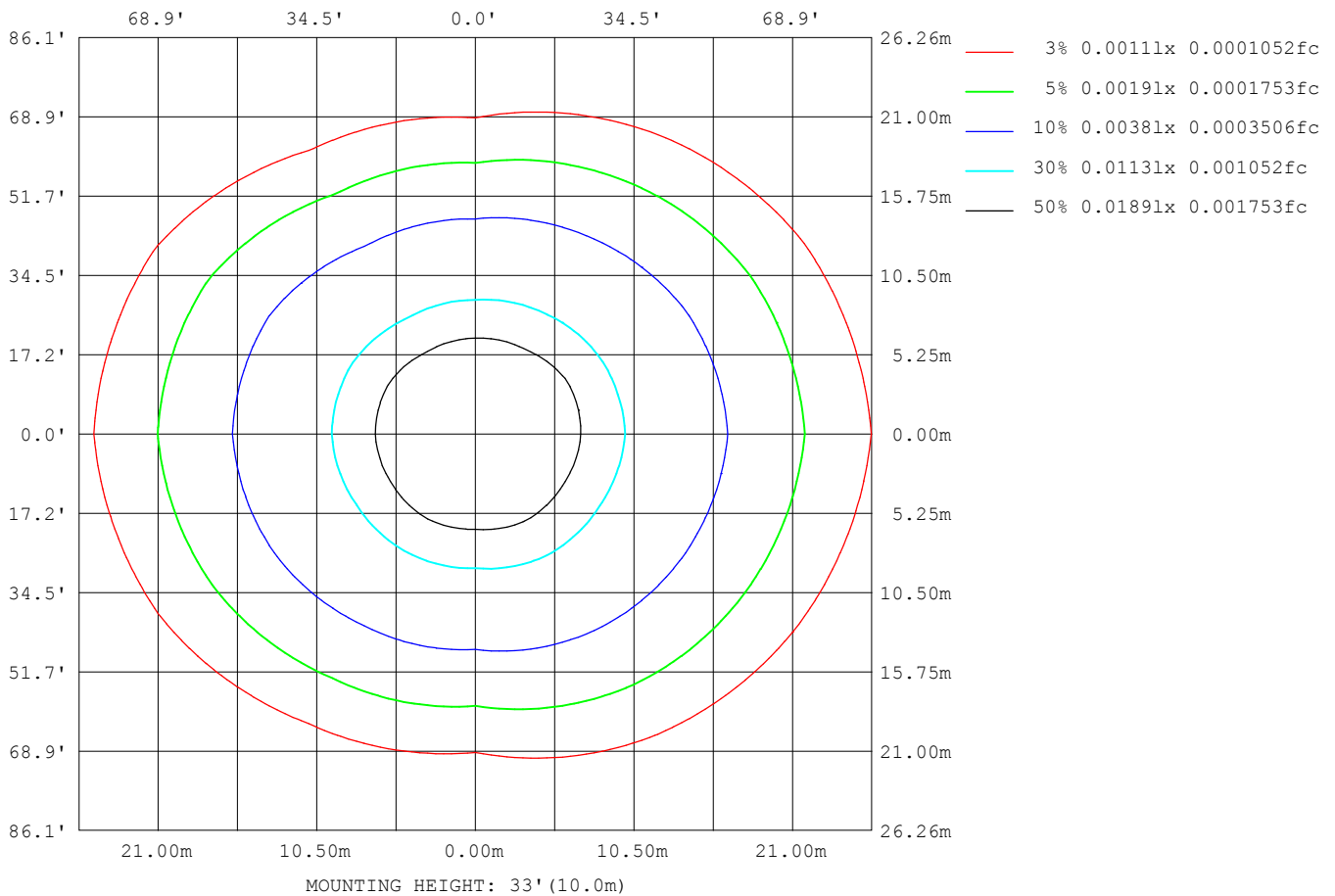
Note:The Curves indicate the illuminated area and the average illumination when the luminaire is at different distance.

C Range: 0 - 360DEG
C Interval: 30.0DEG
Test Speed: HIGH
Temperature:25.3DEG
Operators:WFW
Test Date:2023-03-04

γ Range: 0 - 180DEG
γ Interval: 1.0DEG
Test System:EVERFINE GO-2000B_V1 SYSTEM V2.0.269
Humidity:65.0%
Test Distance:10.800m [K=1.0000]
Remarks:

ISOLUX DIAGRAM

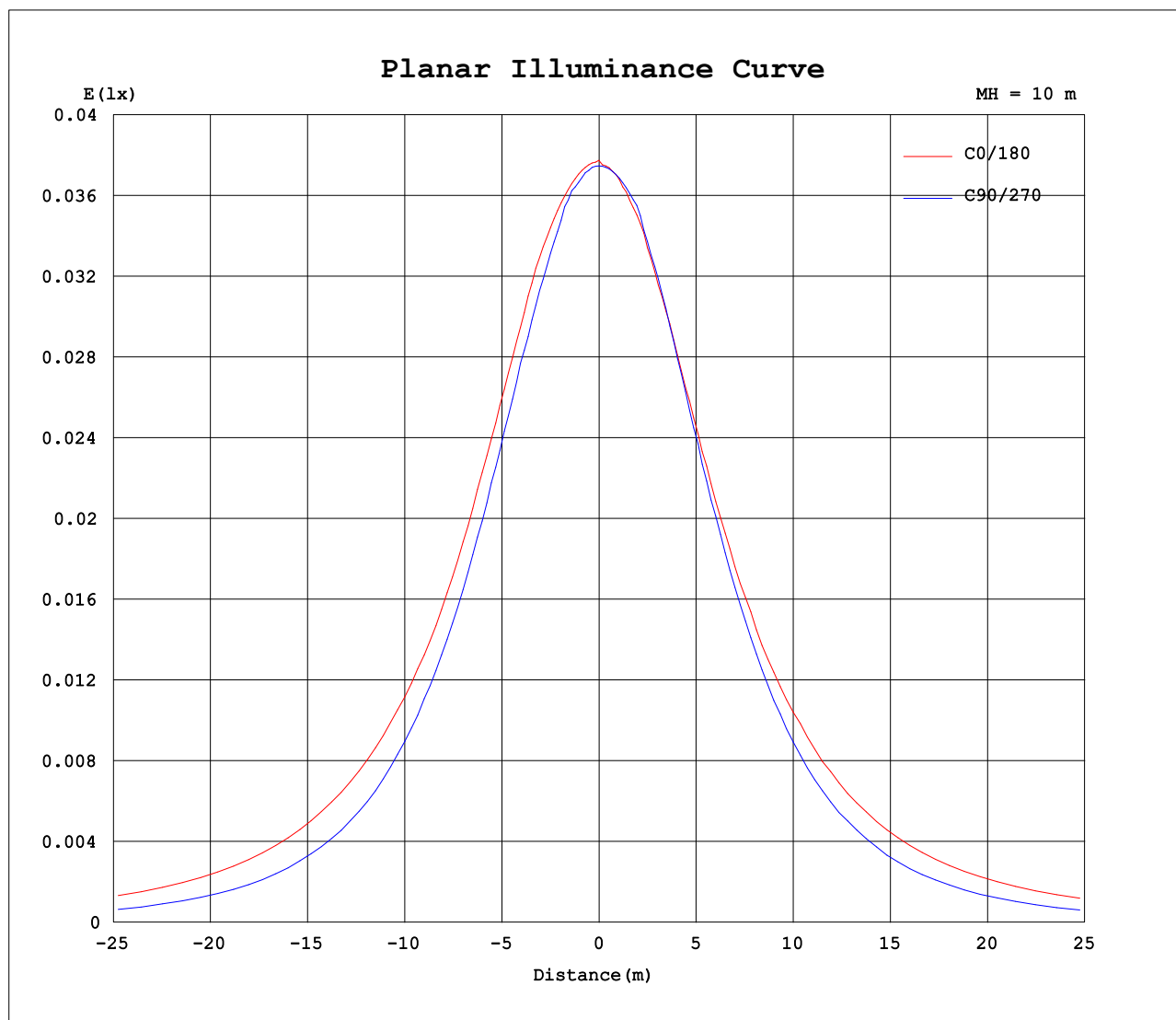
Test:U:24.00V I:0.2381A P:5.714W PF:1.000 Lamp Flux:17.2454x1 lm		
NAME: SF21-24V-5050-70-SPI4-RGBW-5000K-B	TYPE: 硅胶	WEIGHT:
DIM.: 28MM*11.5MM	SPEC.:	SERIAL No.:202303006
MFR.: OLYMPIA	SUR.:1.0*0.0115	PROTECTION ANGLE:



C Range: 0 - 360DEG
C Interval: 30.0DEG
Test Speed: HIGH
Temperature:25.3DEG
Operators:WFW
Test Date:2023-03-04

γ Range: 0 - 180DEG
 γ Interval: 1.0DEG
Test System:EVERFINE GO-2000B_V1 SYSTEM V2.0.269
Humidity:65.0%
Test Distance:10.800m [K=1.0000]
Remarks:

Planar Illuminance Curve



C Range: 0 - 360DEG
C Interval: 30.0DEG
Test Speed: HIGH
Temperature: 25.3DEG
Operators: WFW
Test Date: 2023-03-04

γ Range: 0 - 180DEG
 γ Interval: 1.0DEG
Test System: EVERFINE GO-2000B_V1 SYSTEM V2.0.269
Humidity: 65.0%
Test Distance: 10.800m [K=1.0000]
Remarks:

LUMINOUS DISTRIBUTION INTENSITY DATA

Test:U:24.00V I:0.2381A P:5.714W PF:1.000 Lamp Flux:17.2454x1 lm		
NAME: SF21-24V-5050-70-SPI4-RGBW-5000K-B	TYPE: 硅胶	WEIGHT:
DIM.: 28MM*11.5MM	SPEC.:	SERIAL No.:202303006
MFR.: OLYMPIA	SUR.:1.0*0.0115	PROTECTION ANGLE:

Table--1

UNIT: cd

C (DEG) γ (DEG)	0	30	60	90	120	150	180	210	240	270	300	330						
0	3.77	3.76	3.75	3.75	3.75	3.75	3.77	3.76	3.75	3.75	3.75	3.75						
5	3.77	3.76	3.75	3.73	3.75	3.73	3.75	3.76	3.74	3.75	3.75	3.75						
10	3.77	3.74	3.75	3.71	3.75	3.71	3.71	3.76	3.71	3.75	3.72	3.75						
15	3.77	3.72	3.73	3.61	3.68	3.61	3.65	3.71	3.60	3.67	3.66	3.75						
20	3.74	3.62	3.64	3.50	3.57	3.53	3.57	3.62	3.50	3.56	3.57	3.71						
25	3.66	3.53	3.53	3.37	3.44	3.39	3.47	3.51	3.38	3.41	3.44	3.66						
30	3.56	3.41	3.37	3.20	3.28	3.26	3.34	3.37	3.19	3.22	3.30	3.56						
35	3.43	3.26	3.22	3.00	3.10	3.10	3.21	3.22	3.03	3.02	3.14	3.44						
40	3.27	3.10	3.02	2.78	2.89	2.93	3.05	3.03	2.78	2.78	2.95	3.28						
45	3.16	2.92	2.81	2.53	2.65	2.76	2.94	2.87	2.55	2.53	2.75	3.01						
50	3.03	2.80	2.58	2.26	2.39	2.59	2.82	2.72	2.29	2.25	2.53	2.85						
55	2.91	2.62	2.33	1.99	2.15	2.43	2.65	2.54	2.05	1.98	2.31	2.69						
60	2.76	2.49	2.12	1.70	1.90	2.26	2.50	2.35	1.81	1.68	2.08	2.53						
65	2.62	2.28	1.91	1.41	1.66	2.08	2.38	2.19	1.56	1.38	1.88	2.36						
70	2.47	2.12	1.68	1.11	1.42	1.93	2.24	2.03	1.35	1.06	1.66	2.20						
75	2.31	1.97	1.46	0.82	1.21	1.77	2.09	1.88	1.11	0.76	1.47	2.05						
80	2.17	1.81	1.27	0.51	1.01	1.61	1.93	1.72	0.93	0.49	1.28	1.88						
85	2.00	1.63	1.12	0.26	0.85	1.46	1.77	1.56	0.78	0.28	1.14	1.72						
90	1.82	1.48	0.96	0.16	0.70	1.28	1.60	1.39	0.65	0.16	0.98	1.54						
95	1.63	1.29	0.83	0.14	0.59	1.12	1.43	1.23	0.52	0.14	0.87	1.37						
100	1.45	1.14	0.65	0.12	0.51	0.98	1.25	1.09	0.43	0.14	0.72	1.21						
105	1.27	0.94	0.52	0.10	0.44	0.84	1.09	0.96	0.39	0.11	0.62	1.04						
110	1.08	0.74	0.41	0.08	0.39	0.74	0.96	0.85	0.34	0.11	0.55	0.87						
115	0.92	0.64	0.42	0.06	0.35	0.64	0.84	0.76	0.29	0.11	0.50	0.77						
120	0.82	0.49	0.37	0.06	0.30	0.55	0.72	0.67	0.28	0.11	0.46	0.67						
125	0.73	0.48	0.26	0.06	0.26	0.51	0.62	0.59	0.21	0.11	0.40	0.58						
130	0.60	0.39	0.19	0.03	0.21	0.40	0.54	0.50	0.17	0.10	0.37	0.50						
135	0.52	0.31	0.16	0.00	0.17	0.32	0.44	0.42	0.15	0.10	0.30	0.43						
140	0.44	0.24	0.12	0.00	0.14	0.27	0.37	0.35	0.09	0.11	0.22	0.31						
145	0.38	0.17	0.09	0.00	0.11	0.19	0.28	0.28	0.06	0.08	0.08	0.23						
150	0.31	0.10	0.07	0.00	0.08	0.15	0.20	0.23	0.03	0.03	0.05	0.19						
155	0.25	0.06	0.05	0.00	0.05	0.08	0.16	0.17	0.01	0.01	0.01	0.15						
160	0.19	0.03	0.05	0.00	0.03	0.03	0.06	0.10	0.00	0.01	0.00	0.11						
165	0.13	0.01	0.04	0.00	0.01	0.00	0.01	0.08	0.00	0.01	0.00	0.07						
170	0.04	0.01	0.03	0.00	0.01	0.00	0.01	0.03	0.00	0.00	0.00	0.04						
175	0.03	0.01	0.01	0.00	0.01	0.01	0.01	0.02	0.01	0.00	0.00	0.03						
180	0.02	0.01	0.01	0.00	0.01	0.01	0.00	0.02	0.01	0.00	0.00	0.01						

C Range: 0 - 360DEG
C Interval: 30.0DEG
Test Speed: HIGH
Temperature:25.3DEG
Operators:WFW
Test Date:2023-03-04

γ Range: 0 - 180DEG
γ Interval: 1.0DEG
Test System:EVERFINE GO-2000B_V1 SYSTEM V2.0.269
Humidity:65.0%
Test Distance:10.800m [K=1.0000]
Remarks:

Photometric Data Table [cd]

G/C	0.0	30.0	60.0	90.0	120.0	150.0	180.0	210.0	240.0	270.0
0.0	3.774	3.761	3.754	3.747	3.747	3.747	3.774	3.761	3.754	3.747
3.0	3.768	3.761	3.754	3.740	3.747	3.733	3.754	3.761	3.747	3.747
6.0	3.768	3.754	3.754	3.726	3.747	3.719	3.740	3.761	3.740	3.747
9.0	3.768	3.747	3.754	3.712	3.747	3.705	3.712	3.761	3.719	3.747
12.0	3.768	3.719	3.754	3.657	3.719	3.643	3.698	3.747	3.657	3.740
15.0	3.768	3.719	3.726	3.608	3.678	3.608	3.650	3.705	3.601	3.671
18.0	3.768	3.657	3.671	3.553	3.615	3.560	3.601	3.657	3.546	3.616
21.0	3.713	3.601	3.622	3.484	3.553	3.497	3.546	3.595	3.483	3.539
24.0	3.671	3.546	3.553	3.400	3.470	3.421	3.477	3.532	3.387	3.449
27.0	3.622	3.484	3.470	3.303	3.373	3.352	3.421	3.449	3.290	3.352
30.0	3.560	3.407	3.373	3.199	3.276	3.262	3.345	3.366	3.186	3.221
33.0	3.477	3.324	3.283	3.089	3.172	3.165	3.269	3.276	3.075	3.103
36.0	3.387	3.255	3.179	2.950	3.055	3.068	3.172	3.172	2.950	2.972
39.0	3.304	3.151	3.069	2.825	2.930	2.950	3.088	3.075	2.818	2.833
42.0	3.228	3.033	2.937	2.701	2.792	2.846	3.019	2.965	2.701	2.681
45.0	3.158	2.923	2.805	2.534	2.653	2.756	2.943	2.874	2.548	2.528
48.0	3.089	2.846	2.674	2.375	2.494	2.659	2.867	2.771	2.389	2.362
51.0	3.013	2.749	2.535	2.209	2.342	2.569	2.777	2.681	2.243	2.189
54.0	2.944	2.652	2.390	2.050	2.189	2.486	2.701	2.577	2.098	2.044
57.0	2.854	2.583	2.251	1.890	2.051	2.375	2.597	2.466	1.953	1.857
60.0	2.764	2.486	2.120	1.703	1.898	2.264	2.500	2.355	1.814	1.683
63.0	2.674	2.368	1.988	1.530	1.746	2.154	2.424	2.251	1.655	1.497
66.0	2.591	2.264	1.857	1.371	1.607	2.057	2.327	2.161	1.516	1.316
69.0	2.507	2.147	1.725	1.170	1.469	1.960	2.265	2.064	1.385	1.143
72.0	2.404	2.064	1.587	0.9829	1.330	1.863	2.161	1.967	1.253	0.9425
75.0	2.314	1.967	1.462	0.8167	1.212	1.773	2.091	1.877	1.115	0.7555
78.0	2.217	1.863	1.344	0.6298	1.095	1.710	2.001	1.787	0.9969	0.5892
81.0	2.140	1.773	1.240	0.4634	0.9838	1.593	1.925	1.676	0.9205	0.4367
84.0	2.037	1.683	1.150	0.2975	0.8868	1.489	1.814	1.593	0.8031	0.3121
87.0	1.926	1.599	1.046	0.1868	0.7968	1.378	1.703	1.496	0.7134	0.2150
90.0	1.822	1.482	0.9630	0.1593	0.6999	1.281	1.599	1.392	0.6507	0.1595
93.0	1.704	1.385	0.8729	0.1385	0.6305	1.177	1.496	1.288	0.5607	0.1524
96.0	1.587	1.281	0.8037	0.1385	0.5682	1.087	1.399	1.205	0.4985	0.1385
99.0	1.483	1.156	0.6999	0.1247	0.5197	1.011	1.288	1.122	0.4568	0.1317
102.0	1.379	1.073	0.5821	0.1245	0.4780	0.9347	1.184	1.039	0.4154	0.1109
105.0	1.275	0.9418	0.5198	0.1038	0.4435	0.8379	1.094	0.9628	0.3878	0.1108
108.0	1.178	0.8443	0.4086	0.0901	0.4089	0.7755	1.031	0.8936	0.3804	0.1108
111.0	1.039	0.7202	0.4086	0.0762	0.3811	0.7203	0.9348	0.8313	0.3185	0.1108
114.0	0.9560	0.6440	0.4155	0.0692	0.3602	0.6509	0.8654	0.7759	0.3046	0.1108
117.0	0.8868	0.5330	0.4087	0.0623	0.3325	0.6025	0.8167	0.7204	0.2770	0.1108
120.0	0.8175	0.4917	0.3742	0.0554	0.3048	0.5470	0.7201	0.6650	0.2770	0.1108
123.0	0.7758	0.4848	0.2913	0.0554	0.2840	0.5125	0.6716	0.6234	0.2285	0.1108
126.0	0.6998	0.4706	0.2426	0.0555	0.2494	0.4984	0.6025	0.5750	0.2077	0.1039
129.0	0.6235	0.3878	0.2009	0.0414	0.2218	0.4086	0.5539	0.5197	0.1800	0.1039
132.0	0.5750	0.3808	0.1734	0	0.1872	0.4016	0.4986	0.4779	0.1593	0.1039
135.0	0.5197	0.3115	0.1593	0	0.1732	0.3185	0.4431	0.4226	0.1521	0.1039
138.0	0.4711	0.2701	0.1178	0	0.1455	0.2770	0.4014	0.3880	0.1107	0.1039
141.0	0.4364	0.2146	0.1178	0	0.1317	0.2562	0.3461	0.3464	0.0829	0.0971
144.0	0.3949	0.1800	0.0970	0	0.1177	0.2077	0.3045	0.3049	0.0623	0.0833
147.0	0.3466	0.1660	0.0831	0	0.1039	0.1662	0.2700	0.2564	0.0623	0.0693
150.0	0.3051	0.1039	0.0693	0	0.0763	0.1522	0.2008	0.2287	0.0344	0.0346
153.0	0.2634	0.0692	0.0554	0	0.0556	0.1037	0.1593	0.1940	0.0069	0.0208
156.0	0.2356	0.0554	0.0485	0	0.0416	0.0691	0.1244	0.1594	0.0069	0.0139
159.0	0.2009	0.0484	0.0485	0	0.0415	0.0415	0.0760	0.0970	0	0.0069
162.0	0.1527	0.0069	0.0416	0	0.0209	0	0.0486	0.0970	0	0.0069
165.0	0.1316	0.0069	0.0416	0	0.0139	0	0.0069	0.0761	0	0.0069
168.0	0.0763	0.0069	0.0277	0	0.0139	0	0.0069	0.0416	0	0.0069
171.0	0.0278	0.0069	0.0277	0	0.0139	0	0.0069	0.0277	0	0
174.0	0.0277	0.0069	0.0208	0	0.0139	0.0001	0.0069	0.0208	0.0001	0
177.0	0.0277	0.0069	0.0069	0	0.0139	0.0069	0.0069	0.0208	0.0069	0
180.0	0.0208	0.0069	0.0069	0	0.0139	0.0069	0	0.0208	0.0069	0
G/C	300.0	330.0								
0.0	3.747	3.747								
3.0	3.747	3.747								
6.0	3.733	3.754								
9.0	3.719	3.754								
12.0	3.698	3.754								
15.0	3.657	3.754								
18.0	3.601	3.740								
21.0	3.525	3.705								
24.0	3.476	3.664								
27.0	3.380	3.622								
30.0	3.296	3.560								

C Range: 0 - 360DEG
 C Interval: 30.0DEG
 Test Speed: HIGH
 Temperature: 25.3DEG
 Operators: WFW
 Test Date: 2023-03-04

γ Range: 0 - 180DEG
 γ Interval: 1.0DEG
 Test System: EVERFINE GO-2000B_V1 SYSTEM V2.0.269
 Humidity: 65.0%
 Test Distance: 10.800m [K=1.0000]
 Remarks:

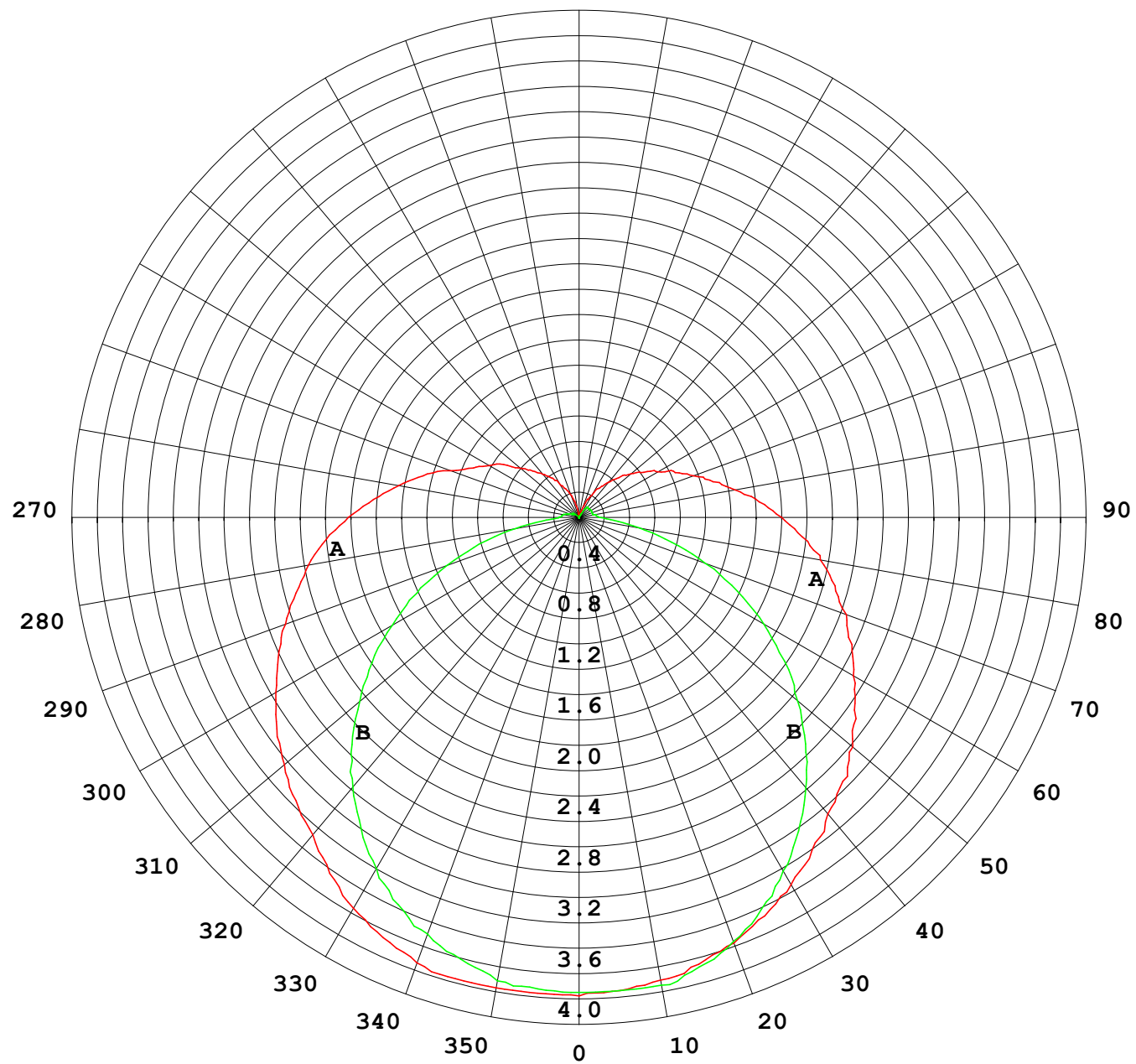
Photometric Data Table [cd]

33.0	3.186	3.498
36.0	3.096	3.415
39.0	2.991	3.332
42.0	2.867	3.200
45.0	2.749	3.013
48.0	2.611	2.916
51.0	2.493	2.819
54.0	2.361	2.729
57.0	2.202	2.618
60.0	2.084	2.528
63.0	1.960	2.431
66.0	1.828	2.321
69.0	1.703	2.224
72.0	1.585	2.147
75.0	1.475	2.050
78.0	1.364	1.940
81.0	1.274	1.849
84.0	1.150	1.753
87.0	1.066	1.656
90.0	0.9832	1.545
93.0	0.9208	1.441
96.0	0.8516	1.344
99.0	0.7477	1.240
102.0	0.6715	1.157
105.0	0.6162	1.039
108.0	0.5954	0.9215
111.0	0.5401	0.8520
114.0	0.4987	0.7827
117.0	0.4918	0.7273
120.0	0.4639	0.6720
123.0	0.4430	0.6166
126.0	0.3947	0.5267
129.0	0.3877	0.5126
132.0	0.3254	0.4780
135.0	0.3046	0.4296
138.0	0.2699	0.3605
141.0	0.2077	0.2842
144.0	0.1242	0.2286
147.0	0.0485	0.2354
150.0	0.0485	0.1871
153.0	0.0069	0.1454
156.0	0.0137	0.1386
159.0	0	0.1177
162.0	0	0.0902
165.0	0	0.0693
168.0	0	0.0485
171.0	0	0.0416
174.0	0	0.0277
177.0	0	0.0208
180.0	0	0.0069

C Range: 0 - 360DEG
C Interval: 30.0DEG
Test Speed: HIGH
Temperature:25.3DEG
Operators:WFW
Test Date:2023-03-04

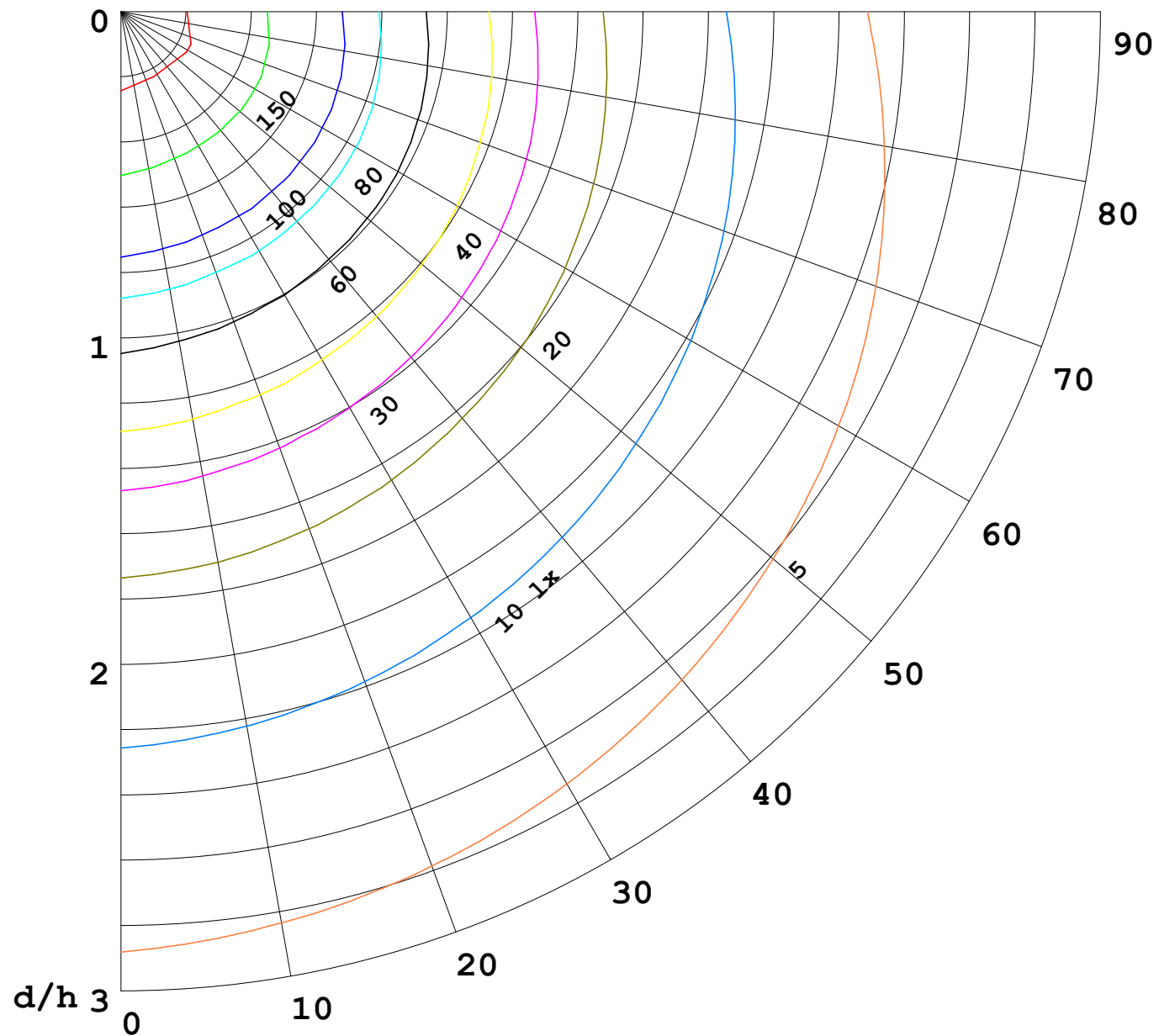
γ Range: 0 - 180DEG
γ Interval: 1.0DEG
Test System:EVERFINE GO-2000B_V1 SYSTEM V2.0.269
Humidity:65.0%
Test Distance:10.800m [K=1.0000]
Remarks:

I (cd)



1000 lm

$\kappa = 1$



F = 5000 lm
 K = 0.7
 Hcc = 0.0 m
 Hfc = 0.0 m
 Eave = 100 lx

	Pcc	Pw	Pfc
—	70	50	30
—	50	30	20

