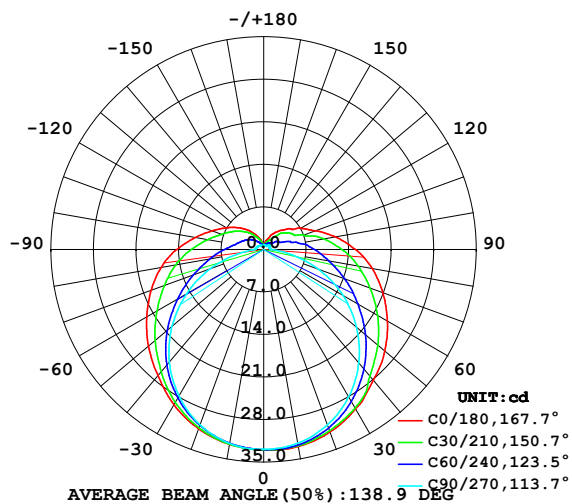


LUMINAIRE PHOTOMETRIC TEST REPORT

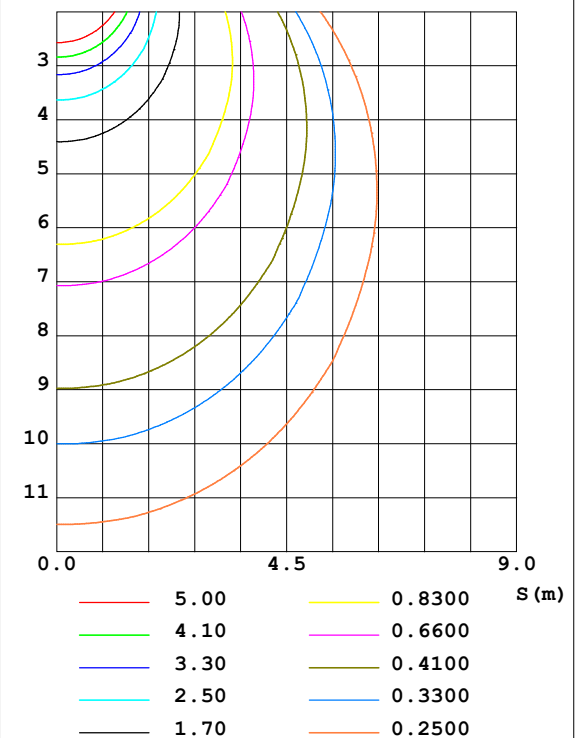
Test:U:24.00V I:0.2378A P:5.707W PF:1.000 Lamp Flux:151.736x1 lm		
NAME: SF21-24V-5050-70-SPI4-RGBW-4000K-W	TYPE: 硅胶	WEIGHT:
DIM.: 28MM*11.5MM	SPEC.:	SERIAL No.:202303005
MFR.: OLYMPIA	SUR.:1.0*0.0115	PROTECTION ANGLE:

DATA OF LAMP		PHOTOMETRIC DATA Eff: 26.59 lm/W			
MODEL	5050	I _{max} (cd)	33.06	S/MH (C0/180)	1.37
NOMINAL POWER (W)	18	LOR (%)	100.0	S/MH (C90/270)	1.27
RATED VOLTAGE (V)	24	TOTAL FLUX (lm)	151.74	η UP, DN (C0-180)	9.1, 40.9
NOMINAL FLUX (lm)	151.736	CIE CLASS	SEMI-D.	η UP, DN (C180-360)	9.4, 40.6
LAMPS INSIDE	1	η up (%)	18.5	CIBSE SHR NOM	1.50
TEST VOLTAGE (V)	24.0	η down (%)	81.5	CIBSE SHR MAX	1.50

LUMINOUS INTENSITY DISTRIBUTION DIAGRAM



C0 PLANE ISOLUX DIAGRAM (UNIT:lx)



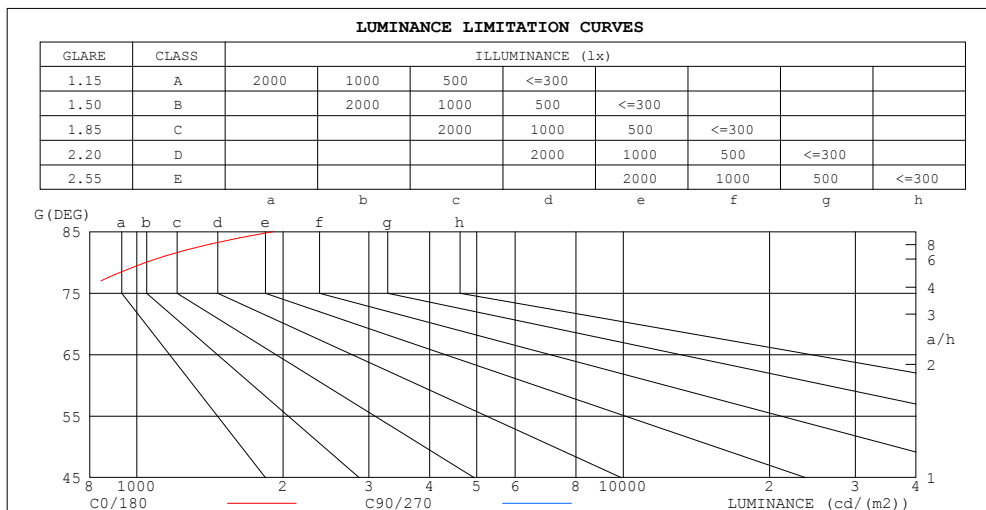
C Range: 0 - 360DEG
C Interval: 30.0DEG
Test Speed: HIGH
Temperature: 25.3DEG
Operators: WFW
Test Date: 2023-03-04

γ Range: 0 - 180DEG
γ Interval: 1.0DEG
Test System: EVERFINE GO-2000B_V1 SYSTEM V2.0.269
Humidity: 65.0%
Test Distance: 10.800m [K=1.0000]
Remarks:

ZONAL FLUX DIAGRAM AND LUMINANCE LIMITATION CURVES

ZONAL FLUX DIAGRAM:

γ	C0	C45	C90	C135	C180	C225	C270	C315	γ	Φ zone	Φ total	%lum, lamp
10	32.93	32.74	32.36	32.31	32.56	32.45	32.41	32.66	0- 10	3.126	3.126	2.06,2.06
20	31.96	31.49	30.71	30.84	31.39	31.01	30.68	31.46	10- 20	9.036	12.16	8.02,8.02
30	30.30	29.49	28.00	28.51	29.52	28.67	27.89	29.30	20- 30	13.93	26.09	17.2,17.2
40	28.09	26.45	24.35	25.39	27.09	25.53	24.17	26.36	30- 40	17.25	43.33	28.6,28.6
50	26.02	23.20	19.96	21.87	24.76	22.02	19.73	23.13	40- 50	18.76	62.09	40.9,40.9
60	23.52	19.77	15.05	18.17	22.22	18.32	14.70	19.75	50- 60	18.61	80.70	53.2,53.2
70	20.86	16.42	9.636	14.69	19.72	14.87	9.368	16.38	60- 70	17.01	97.71	64.4,64.4
80	18.14	13.34	4.338	11.63	17.15	11.84	4.291	13.21	70- 80	14.42	112.1	73.9,73.9
90	15.11	10.63	1.094	8.945	14.30	9.191	1.517	10.43	80- 90	11.49	123.6	81.5,81.5
100	12.05	8.031	1.004	6.867	11.46	7.096	1.351	7.770	90-100	8.888	132.5	87.3,87.3
110	8.967	5.348	1.011	5.475	9.043	5.652	1.247	5.580	100-110	6.579	139.1	91.7,91.7
120	7.032	3.968	1.164	4.377	7.167	4.547	1.115	4.208	110-120	4.706	143.8	94.8,94.8
130	5.348	3.036	1.177	3.411	5.622	3.581	0.9836	3.338	120-130	3.383	147.2	97,97
140	4.005	2.091	0.7064	2.569	4.230	2.680	0.8935	2.324	130-140	2.237	149.4	98.5,98.5
150	2.965	1.437	0.7134	1.752	2.894	1.828	0.7412	1.548	140-150	1.298	150.7	99.3,99.3
160	1.718	1.046	0.7203	1.177	1.862	1.223	0.6581	1.146	150-160	0.6692	151.4	99.8,99.8
170	0.8730	0.8206	0.7204	0.7583	0.8445	0.8174	0.6580	0.8381	160-170	0.2822	151.7	100,100
180	0.7618	0.7411	0.7480	0.7445	0.7549	0.7445	0.7411	0.7445	170-180	0.0728	151.7	100,100
DEG	LUMINOUS INTENSITY:cd									UNIT:lm		



LUMINANCE cd/(m2)		
G (DEG)	C0/180	C90/270
85	1914	252
80	1045	250
75	754	268
70	610	282
65	525	293
60	470	301
55	433	306
50	405	310
45	384	314

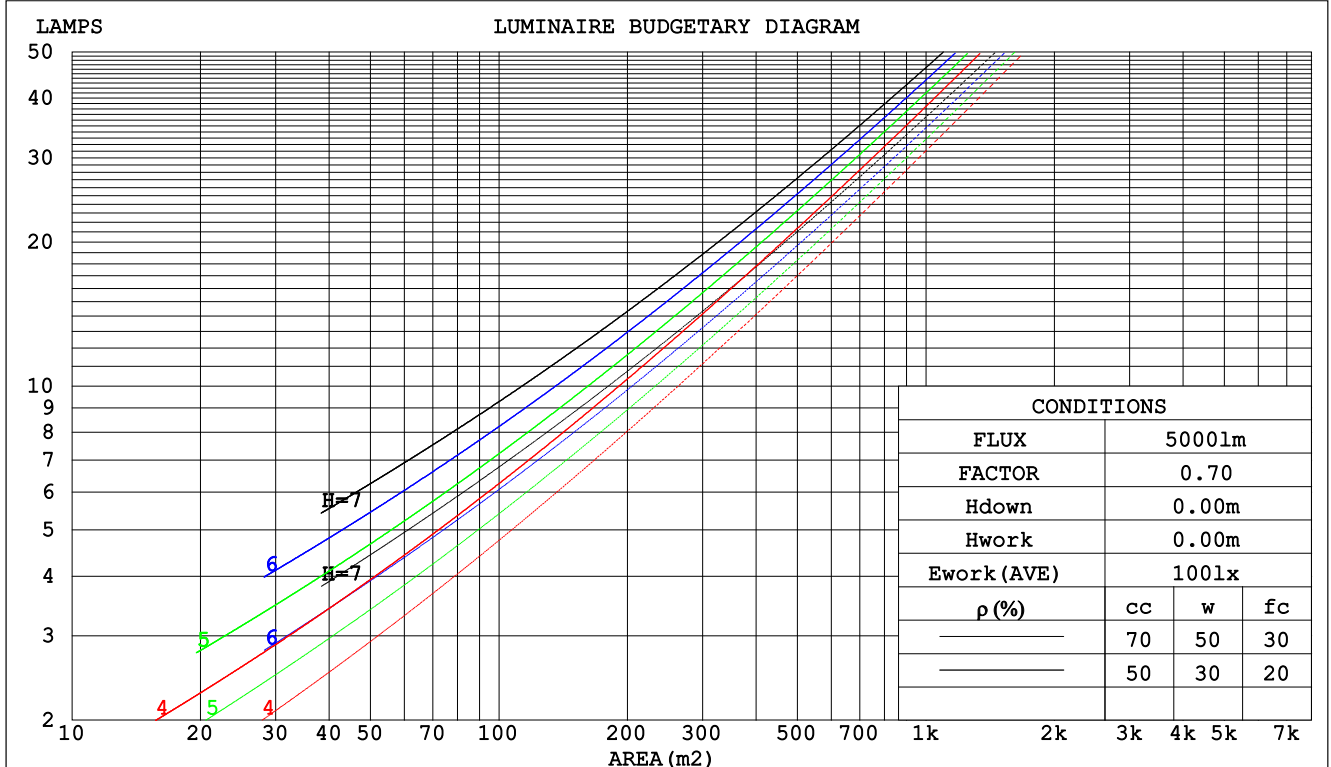
C Range: 0 - 360DEG
C Interval: 30.0DEG
Test Speed: HIGH
Temperature:25.3DEG
Operators:WFW
Test Date:2023-03-04

γ Range: 0 - 180DEG
 γ Interval: 1.0DEG
Test System:EVERFINE GO-2000B_V1 SYSTEM V2.0.269
Humidity:65.0%
Test Distance:10.800m [K=1.0000]
Remarks:

CU AND LUMINAIRE BUDGETARY ESTIMATE DIAGRAM

Test:U:24.00V I:0.2378A P:5.707W PF:1.000 Lamp Flux:151.736x1 lm		
NAME: SF21-24V-5050-70-SPI4-RGBW-4000K-W	TYPE: 硅胶	WEIGHT:
DIM.: 28MM*11.5MM	SPEC.:	SERIAL No.:202303005
MFR.: OLYMPIA	SUR.:1.0*0.0115	PROTECTION ANGLE:

pcc	80%			70%			50%			30%			10%			0
pw	50%	30%	10%	50%	30%	10%	50%	30%	10%	50%	30%	10%	50%	30%	10%	0
pfc	20%			20%			20%			20%			20%			0
RCR	RCR:Room Cavity Ratio															



C Range: 0 - 360DEG
C Interval: 30.0DEG
Test Speed: HIGH
Temperature:25.3DEG
Operators:WFW
Test Date:2023-03-04

γ Range: 0 - 180DEG
γ Interval: 1.0DEG
Test System:EVERFINE GO-2000B_V1 SYSTEM V2.0.269
Humidity:65.0%
Test Distance:10.800m [K=1.0000]
Remarks:

WEC AND CCEC

Test:U:24.00V I:0.2378A P:5.707W PF:1.000 Lamp Flux:151.736x1 lm					
NAME: SF21-24V-5050-70-SPI4-RGBW-4000K-W			TYPE: 硅胶		WEIGHT:
DIM.: 28MM*11.5MM			SPEC.:		SERIAL No.:202303005
MFR.: OLYMPIA			SUR.:1.0*0.0115		PROTECTION ANGLE:

pcc	80%			70%			50%			30%			10%			0	
pw	50%	30%	10%	50%	30%	10%	50%	30%	10%	50%	30%	10%	50%	30%	10%	0	
pfc	20%			20%			20%			20%			20%			0	
RCR	RCR:Room Cavity Ratio						Wall Exitance Coefficients(WEC)										
0.0																	
1.0	.386	.219	.070	.373	.213	.068	.349	.200	.064	.327	.188	.060	.306	.177	.057		
2.0	.333	.183	.056	.322	.177	.055	.300	.167	.052	.280	.157	.049	.261	.148	.047		
3.0	.296	.158	.047	.285	.153	.046	.266	.144	.044	.247	.136	.042	.231	.128	.039		
4.0	.266	.138	.041	.257	.134	.040	.239	.127	.038	.222	.119	.036	.207	.112	.034		
5.0	.242	.123	.036	.233	.120	.035	.217	.113	.033	.202	.107	.032	.188	.100	.030		
6.0	.222	.111	.032	.214	.108	.031	.199	.102	.030	.185	.096	.028	.172	.091	.027		
7.0	.204	.101	.029	.197	.098	.028	.184	.093	.027	.171	.088	.026	.159	.083	.024		
8.0	.190	.093	.026	.183	.090	.025	.171	.085	.024	.159	.081	.023	.148	.076	.022		
9.0	.177	.085	.024	.171	.083	.023	.159	.079	.022	.148	.074	.021	.138	.070	.020		
10.0	.165	.079	.022	.160	.077	.022	.149	.073	.021	.139	.069	.020	.130	.065	.019		

pcc	80%			70%			50%			30%			10%			0
pw	50%	30%	10%	50%	30%	10%	50%	30%	10%	50%	30%	10%	50%	30%	10%	0
pfc	20%			20%			20%			20%			20%			0
RCR	RCR:Room Cavity Ratio						Ceiling Cavity Exitance Coefficients(CCEC)									
0.0	.332	.332	.332	.283	.283	.283	.193	.193	.193	.111	.111	.111	.036	.036	.036	
1.0	.328	.298	.271	.281	.256	.233	.192	.176	.161	.110	.102	.094	.035	.033	.030	
2.0	.321	.275	.236	.275	.237	.204	.188	.164	.142	.109	.095	.084	.035	.031	.027	
3.0	.314	.259	.215	.269	.223	.186	.185	.155	.131	.107	.090	.077	.034	.029	.025	
4.0	.306	.246	.200	.262	.213	.174	.180	.148	.123	.104	.087	.073	.034	.028	.024	
5.0	.298	.236	.191	.256	.204	.166	.176	.143	.117	.102	.084	.069	.033	.027	.023	
6.0	.291	.228	.184	.250	.198	.160	.172	.138	.113	.100	.081	.067	.032	.027	.022	
7.0	.284	.222	.178	.244	.192	.155	.169	.135	.110	.098	.079	.066	.032	.026	.022	
8.0	.277	.216	.174	.238	.188	.152	.165	.132	.108	.096	.078	.064	.031	.025	.021	
9.0	.271	.211	.171	.233	.183	.150	.162	.129	.106	.094	.076	.063	.030	.025	.021	
10.0	.265	.207	.169	.228	.180	.147	.158	.127	.105	.092	.075	.063	.030	.025	.021	

C Range: 0 - 360DEG
 C Interval: 30.0DEG
 Test Speed: HIGH
 Temperature:25.3DEG
 Operators:WFW
 Test Date:2023-03-04

γ Range: 0 - 180DEG
 γ Interval: 1.0DEG
 Test System:EVERFINE GO-2000B_V1 SYSTEM V2.0.269
 Humidity:65.0%
 Test Distance:10.800m [K=1.0000]
 Remarks:

Uncorrected UGR Table

Test:U:24.00V I:0.2378A P:5.707W PF:1.000 Lamp Flux:151.736x1 lm										
NAME: SF21-24V-5050-70-SPI4-RGBW-4000K-W					TYPE:硅胶			WEIGHT:		
DIM.: 28MM*11.5MM					SPEC.:			SERIAL No.:202303005		
MFR.: OLYMPIA					SUR.:1.0*0.0115			PROTECTION ANGLE:		
ceiling/cavity	0.7	0.7	0.5	0.5	0.3	0.7	0.7	0.5	0.5	0.3
walls	0.5	0.3	0.5	0.3	0.3	0.5	0.3	0.5	0.3	0.3
working plane	0.2	0.2	0.2	0.2	0.2	0.2	0.2	0.2	0.2	0.2
Room dimensions	Viewed crosswise					Viewed endwise				
x = 2H y = 2H	9.2	10.6	9.7	11.1	11.7	7.5	8.9	8.0	9.4	10.0
3H	11.9	13.2	12.4	13.7	14.3	9.2	10.5	9.7	11.0	11.6
4H	13.4	14.6	14.0	15.2	15.8	9.9	11.1	10.5	11.7	12.3
6H	15.1	16.2	15.7	16.8	17.5	10.5	11.6	11.1	12.2	12.9
8H	16.0	17.1	16.6	17.7	18.4	10.7	11.8	11.3	12.4	13.1
12H	17.1	18.1	17.7	18.7	19.4	10.9	11.9	11.5	12.5	13.2
4H 2H	9.8	11.0	10.4	11.6	12.2	8.6	9.8	9.1	10.3	11.0
3H	12.7	13.8	13.3	14.4	15.1	10.5	11.6	11.2	12.2	12.9
4H	14.4	15.4	15.1	16.0	16.7	11.5	12.5	12.1	13.1	13.8
6H	16.3	17.2	17.0	17.8	18.6	12.3	13.2	13.0	13.8	14.6
8H	17.4	18.2	18.0	18.8	19.6	12.6	13.4	13.3	14.1	14.9
12H	18.6	19.3	19.2	20.0	20.8	12.9	13.6	13.6	14.3	15.1
8H 4H	14.8	15.6	15.5	16.3	17.1	12.5	13.3	13.2	14.0	14.7
6H	17.0	17.7	17.7	18.4	19.2	13.7	14.4	14.4	15.1	15.9
8H	18.3	18.9	19.0	19.6	20.4	14.3	14.9	15.0	15.6	16.5
12H	19.7	20.3	20.4	21.0	21.8	14.8	15.4	15.5	16.1	16.9
12H 4H	14.8	15.6	15.5	16.3	17.1	12.8	13.6	13.5	14.2	15.0
6H	17.1	17.8	17.9	18.5	19.3	14.3	14.9	15.0	15.6	16.4
8H	18.5	19.1	19.2	19.8	20.6	15.0	15.6	15.8	16.3	17.2
Variations with the observer position at spacings:										
S = 1.0H	+ 0.1 / - 0.1					+ 0.1 / - 0.1				
1.5H	+ 0.2 / - 0.3					+ 0.2 / - 0.3				
2.0H	+ 0.2 / - 0.3					+ 0.2 / - 0.4				

CIE Pub.117 Corrected 151.7 lm Total Lamp Luminous Flux. (8log(F/F0) = -6.6)

C Range: 0 - 360DEG
 C Interval: 30.0DEG
 Test Speed: HIGH
 Temperature:25.3DEG
 Operators:WFW
 Test Date:2023-03-04

γ Range: 0 - 180DEG
 γ Interval: 1.0DEG
 Test System:EVERFINE GO-2000B_V1 SYSTEM V2.0.269
 Humidity:65.0%
 Test Distance:10.800m [K=1.0000]
 Remarks:

UTILIZATION FACTORS TABLE

Test:U:24.00V I:0.2378A P:5.707W PF:1.000 Lamp Flux:151.736x1 lm		
NAME: SF21-24V-5050-70-SPI4-RGBW-4000K-W	TYPE: 硅胶	WEIGHT:
DIM.: 28MM*11.5MM	SPEC.:	SERIAL No.:202303005
MFR.: OLYMPIA	SUR.:1.0*0.0115	PROTECTION ANGLE:

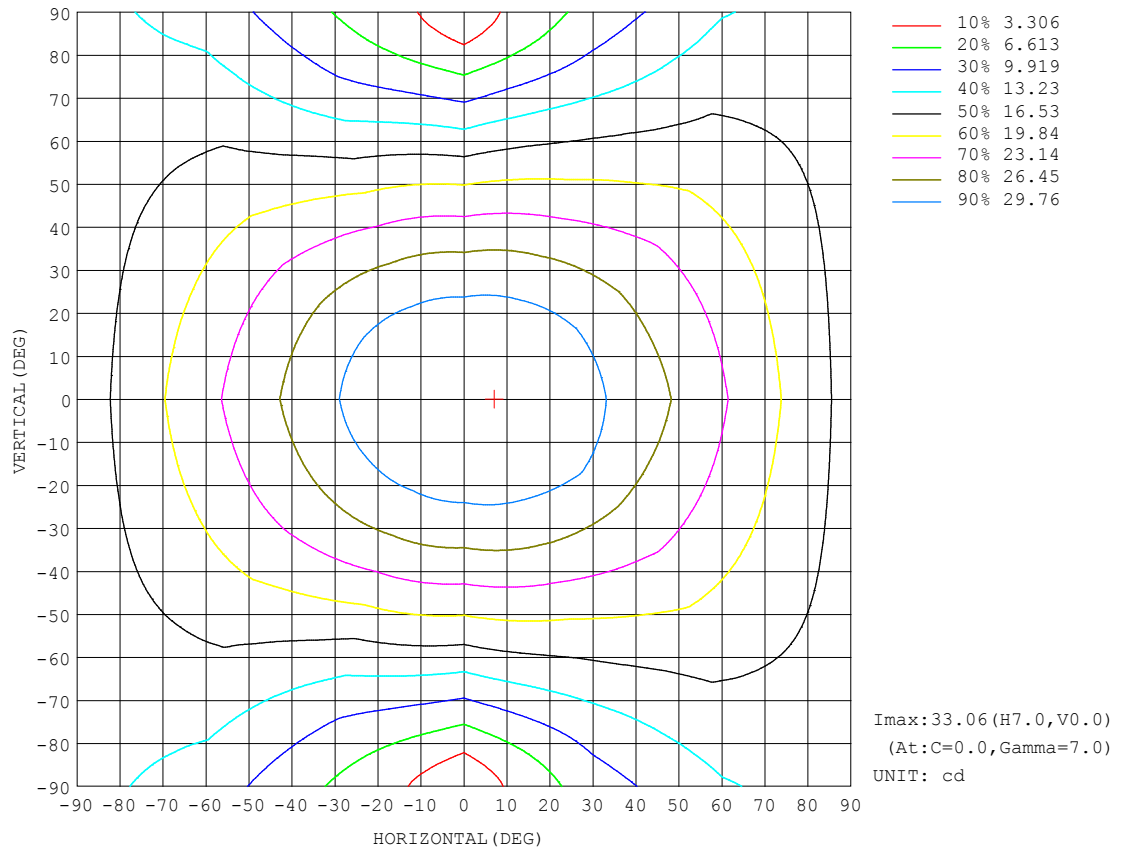
REFLECTANCE										
Ceiling	0.8	0.8	0.8	0.7	0.7	0.7	0.5	0.5	0.5	0
Walls	0.7	0.5	0.3	0.7	0.5	0.3	0.7	0.5	0.3	0
Working plane	0.2	0.2	0.2	0.2	0.2	0.2	0.2	0.2	0.2	0
ROOM INDEX	UTILIZATION FACTORS (PERCENT) $k(RI) \times RCR = 5$									
$k = 0.60$	48	35	28	47	35	28	45	34	27	21
0.80	57	44	36	55	43	35	52	42	35	27
1.00	64	52	43	63	51	43	59	51	41	33
1.25	71	59	50	69	57	49	65	55	48	38
1.50	76	64	56	74	63	55	69	59	52	42
2.00	84	73	64	81	71	63	75	67	60	48
2.50	88	78	70	85	76	68	79	71	65	52
3.00	92	83	75	88	80	73	82	75	69	56
4.00	97	89	82	93	86	80	86	80	75	60
5.00	100	93	87	96	89	84	88	83	79	63
ROOM INDEX	UF (total)									Direct
According to DIN EN 13032-2 2004			Suspended					SHRNM = 1.25		

C Range: 0 - 360DEG
 C Interval: 30.0DEG
 Test Speed: HIGH
 Temperature: 25.3DEG
 Operators: WFW
 Test Date: 2023-03-04

γ Range: 0 - 180DEG
 γ Interval: 1.0DEG
 Test System: EVERFINE GO-2000B_V1 SYSTEM V2.0.269
 Humidity: 65.0%
 Test Distance: 10.800m [K=1.0000]
 Remarks:

ISOCANDELA DIAGRAM

Test:U:24.00V I:0.2378A P:5.707W PF:1.000 Lamp Flux:151.736x1 lm		
NAME: SF21-24V-5050-70-SPI4-RGBW-4000K-W	TYPE: 硅胶	WEIGHT:
DIM.: 28MM*11.5MM	SPEC.:	SERIAL No.:202303005
MFR.: OLYMPIA	SUR.:1.0*0.0115	PROTECTION ANGLE:

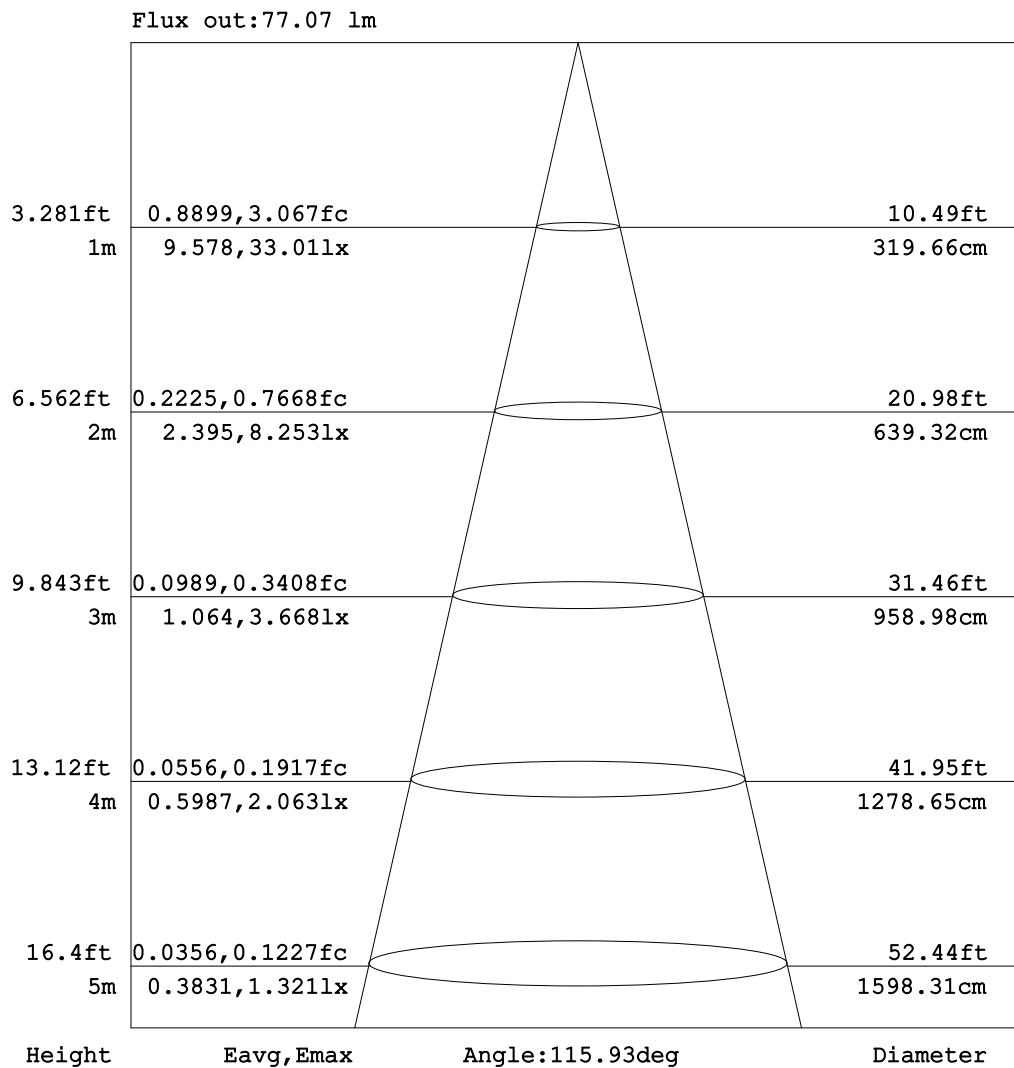


C Range: 0 - 360DEG
C Interval: 30.0DEG
Test Speed: HIGH
Temperature: 25.3DEG
Operators: WFW
Test Date: 2023-03-04

γ Range: 0 - 180DEG
 γ Interval: 1.0DEG
Test System: EVERFINE GO-2000B_V1 SYSTEM V2.0.269
Humidity: 65.0%
Test Distance: 10.800m [K=1.0000]
Remarks:

AAI Figure

Test:U:24.00V I:0.2378A P:5.707W PF:1.000 Lamp Flux:151.736x1 lm		
NAME: SF21-24V-5050-70-SPI4-RGBW-4000K-W	TYPE: 硅胶	WEIGHT:
DIM.: 28MM*11.5MM	SPEC.:	SERIAL No.:202303005
MFR.: OLYMPIA	SUR.:1.0*0.0115	PROTECTION ANGLE:



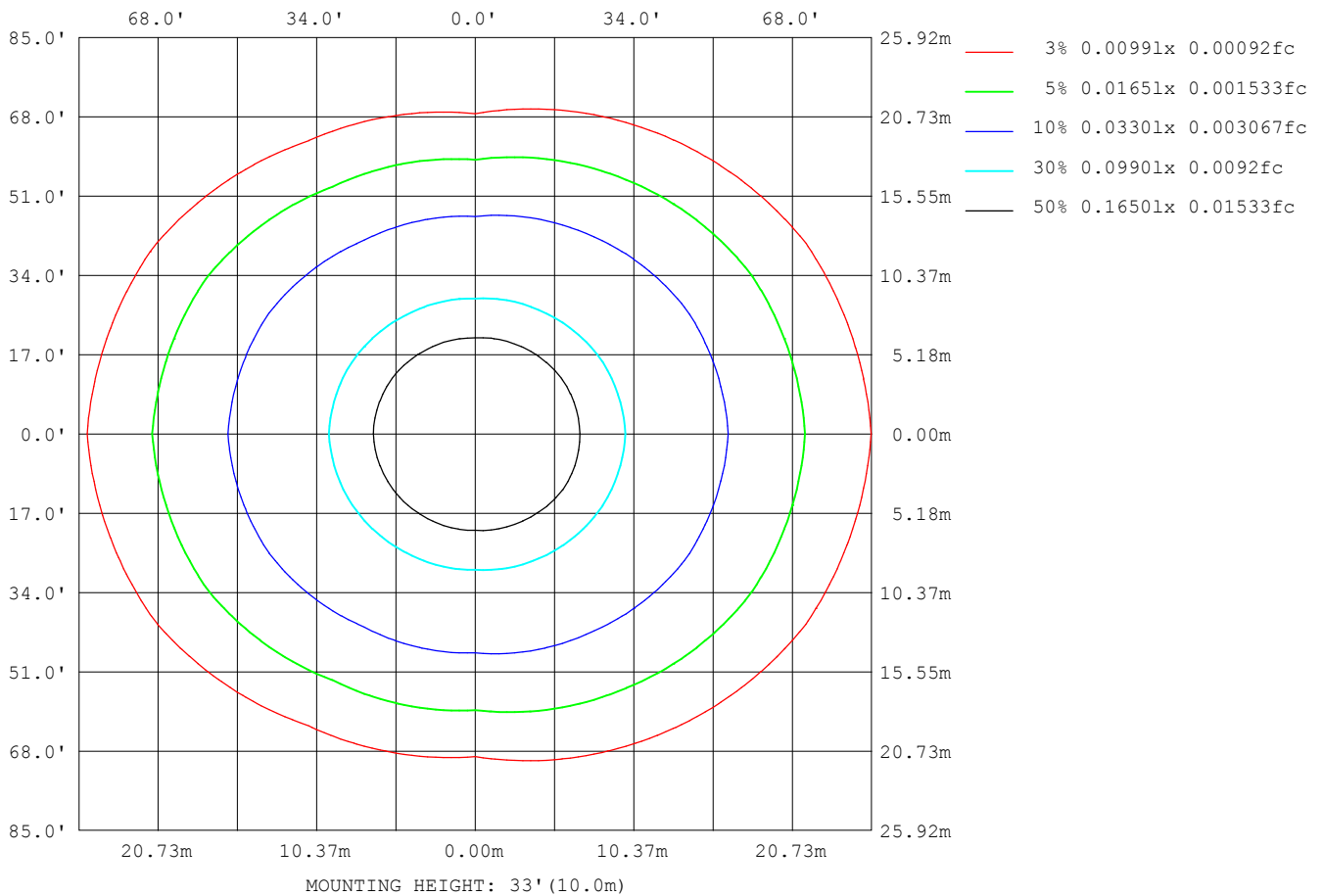
Note: The Curves indicate the illuminated area and the average illumination when the luminaire is at different distance.

C Range: 0 - 360DEG
C Interval: 30.0DEG
Test Speed: HIGH
Temperature: 25.3DEG
Operators: WFW
Test Date: 2023-03-04

γ Range: 0 - 180DEG
γ Interval: 1.0DEG
Test System: EVERFINE GO-2000B_V1 SYSTEM V2.0.269
Humidity: 65.0%
Test Distance: 10.800m [K=1.0000]
Remarks:

ISOLUX DIAGRAM

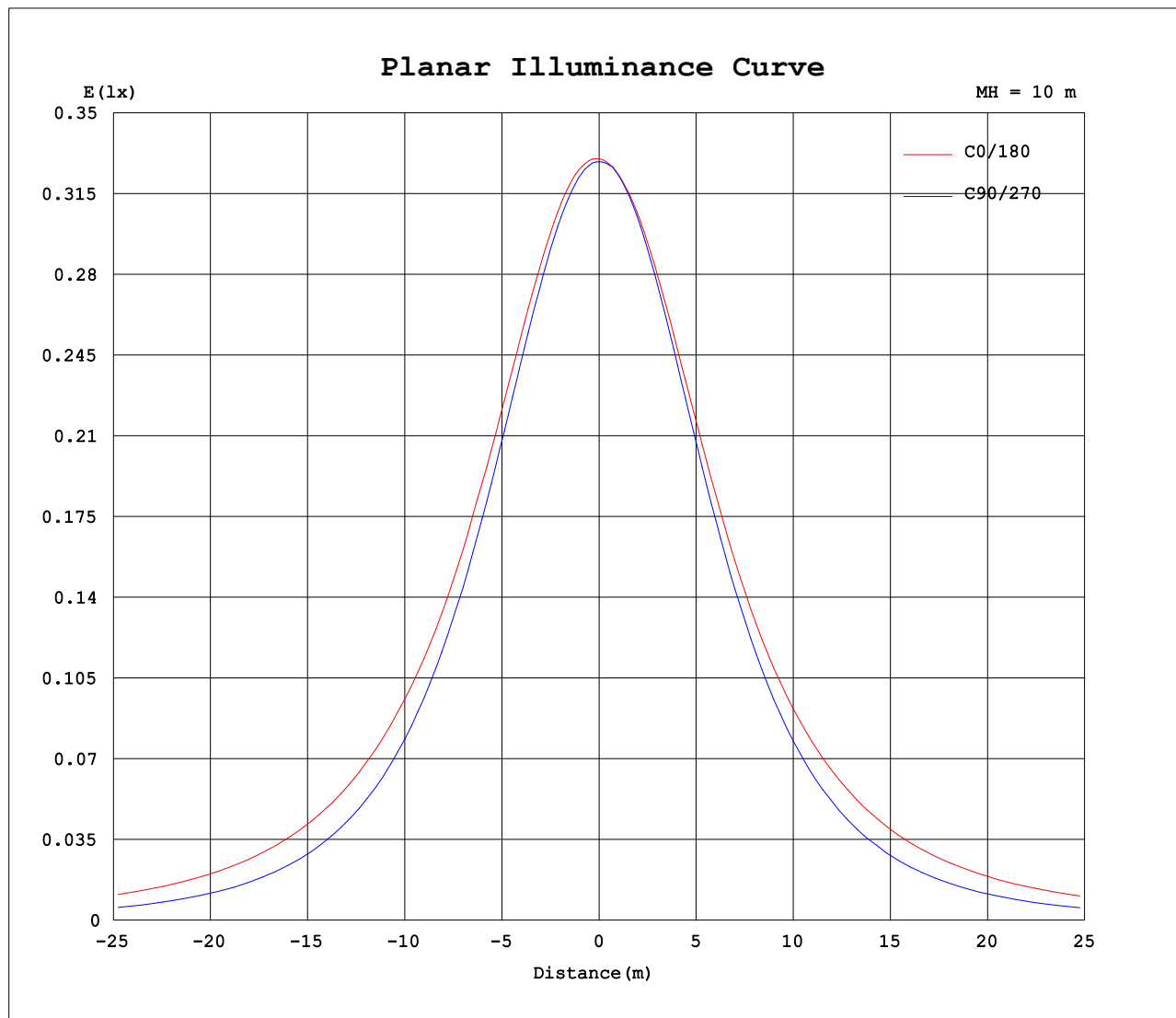
Test:U:24.00V I:0.2378A P:5.707W PF:1.000 Lamp Flux:151.736x1 lm		
NAME: SF21-24V-5050-70-SPI4-RGBW-4000K-W	TYPE: 硅胶	WEIGHT:
DIM.: 28MM*11.5MM	SPEC.:	SERIAL No.:202303005
MFR.: OLYMPIA	SUR.:1.0*0.0115	PROTECTION ANGLE:



C Range: 0 - 360DEG
C Interval: 30.0DEG
Test Speed: HIGH
Temperature:25.3DEG
Operators:WFW
Test Date:2023-03-04

γ Range: 0 - 180DEG
 γ Interval: 1.0DEG
Test System:EVERFINE GO-2000B_V1 SYSTEM V2.0.269
Humidity:65.0%
Test Distance:10.800m [K=1.0000]
Remarks:

Planar Illuminance Curve



C Range: 0 - 360DEG
C Interval: 30.0DEG
Test Speed: HIGH
Temperature: 25.3DEG
Operators: WFW
Test Date: 2023-03-04

γ Range: 0 - 180DEG
 γ Interval: 1.0DEG
Test System: EVERFINE GO-2000B_V1 SYSTEM V2.0.269
Humidity: 65.0%
Test Distance: 10.800m [K=1.0000]
Remarks:

LUMINOUS DISTRIBUTION INTENSITY DATA

Test:U:24.00V I:0.2378A P:5.707W PF:1.000 Lamp Flux:151.736x1 lm		
NAME: SF21-24V-5050-70-SPI4-RGBW-4000K-W	TYPE: 硅胶	WEIGHT:
DIM.: 28MM*11.5MM	SPEC.:	SERIAL No.:202303005
MFR.: OLYMPIA	SUR.:1.0*0.0115	PROTECTION ANGLE:

Table--1

UNIT: cd

C (DEG) γ (DEG)	0	30	60	90	120	150	180	210	240	270	300	330							
0	33.0	33.0	32.9	32.9	32.9	32.8	33.0	33.0	32.9	32.9	32.9	32.8							
5	33.1	33.0	33.0	32.8	32.7	32.7	32.9	32.9	32.8	32.8	32.8	32.9							
10	32.9	32.8	32.7	32.4	32.3	32.3	32.6	32.5	32.4	32.4	32.5	32.8							
15	32.5	32.4	32.1	31.7	31.6	31.7	32.1	32.0	31.7	31.7	32.0	32.4							
20	32.0	31.7	31.3	30.7	30.7	31.0	31.4	31.2	30.8	30.7	31.1	31.8							
25	31.2	31.0	30.2	29.5	29.6	30.0	30.5	30.2	29.6	29.4	30.1	30.9							
30	30.3	30.1	28.9	28.0	28.2	28.9	29.5	29.1	28.2	27.9	28.7	29.9							
35	29.2	29.1	27.4	26.3	26.6	27.5	28.3	27.8	26.6	26.1	27.2	28.6							
40	28.1	27.2	25.7	24.3	24.8	26.0	27.1	26.3	24.8	24.2	25.5	27.2							
45	27.1	25.8	23.8	22.2	22.8	24.5	25.9	24.8	22.8	22.0	23.6	25.8							
50	26.0	24.5	21.9	20.0	20.6	23.1	24.8	23.3	20.7	19.7	21.7	24.5							
55	24.8	23.1	19.9	17.6	18.4	21.6	23.5	21.8	18.5	17.3	19.8	23.1							
60	23.5	21.7	17.9	15.1	16.3	20.1	22.2	20.3	16.4	14.7	17.9	21.6							
65	22.2	20.1	16.0	12.4	14.2	18.6	21.0	18.8	14.3	12.1	16.0	20.2							
70	20.9	18.6	14.2	9.64	12.2	17.2	19.7	17.4	12.3	9.37	14.1	18.7							
75	19.5	17.2	12.4	6.94	10.3	15.9	18.5	16.0	10.5	6.75	12.2	17.3							
80	18.1	15.8	10.9	4.34	8.76	14.5	17.2	14.7	8.98	4.29	10.6	15.9							
85	16.7	14.4	9.55	2.19	7.40	13.1	15.8	13.3	7.64	2.36	9.14	14.5							
90	15.1	12.9	8.38	1.09	6.20	11.7	14.3	11.9	6.47	1.52	7.84	13.0							
95	13.5	11.5	7.36	1.05	5.25	10.3	12.8	10.6	5.52	1.45	6.69	11.6							
100	12.0	10.1	5.96	1.00	4.57	9.17	11.5	9.39	4.81	1.35	5.30	10.2							
105	10.5	8.59	4.64	1.00	4.10	8.10	10.2	8.29	4.31	1.30	4.35	8.80							
110	8.97	6.96	3.74	1.01	3.71	7.24	9.04	7.38	3.93	1.25	3.70	7.45							
115	7.90	5.56	2.88	1.01	3.35	6.47	8.04	6.60	3.54	1.18	3.15	6.57							
120	7.03	5.30	2.64	1.16	2.99	5.76	7.17	5.91	3.19	1.12	2.74	5.67							
125	5.75	4.77	2.02	1.21	2.67	5.14	6.36	5.27	2.85	1.04	2.55	5.11							
130	5.35	4.25	1.82	1.18	2.32	4.50	5.62	4.66	2.50	0.98	2.23	4.45							
135	4.53	3.60	1.59	1.04	2.01	3.91	4.91	4.07	2.15	0.94	1.99	3.77							
140	4.00	2.77	1.41	0.71	1.75	3.39	4.23	3.52	1.84	0.89	1.68	2.97							
145	3.47	1.94	1.25	0.71	1.52	2.80	3.59	2.98	1.53	0.82	1.43	2.47							
150	2.96	1.76	1.12	0.71	1.22	2.28	2.89	2.38	1.28	0.74	1.20	1.89							
155	2.26	1.41	1.00	0.71	1.01	1.88	2.34	2.00	1.00	0.69	1.05	1.68							
160	1.72	1.16	0.94	0.72	0.88	1.47	1.86	1.62	0.82	0.66	0.89	1.41							
165	1.43	0.92	0.87	0.72	0.78	1.03	1.34	1.17	0.73	0.66	0.82	1.13							
170	0.87	0.84	0.80	0.72	0.75	0.77	0.84	0.90	0.73	0.66	0.73	0.94							
175	0.79	0.73	0.77	0.74	0.75	0.74	0.75	0.76	0.74	0.67	0.73	0.80							
180	0.76	0.73	0.75	0.75	0.75	0.74	0.75	0.75	0.74	0.74	0.73	0.75							

C Range: 0 - 360DEG
C Interval: 30.0DEG
Test Speed: HIGH
Temperature:25.3DEG
Operators:WFW
Test Date:2023-03-04

γ Range: 0 - 180DEG
γ Interval: 1.0DEG
Test System:EVERFINE GO-2000B_V1 SYSTEM V2.0.269
Humidity:65.0%
Test Distance:10.800m [K=1.0000]
Remarks:

Photometric Data Table [cd]

G/C	0.0	30.0	60.0	90.0	120.0	150.0	180.0	210.0	240.0	270.0
0.0	33.01	33.00	32.93	32.88	32.87	32.84	33.01	33.00	32.93	32.88
3.0	33.06	33.01	32.95	32.84	32.85	32.74	32.92	32.96	32.86	32.88
6.0	33.06	32.96	32.93	32.72	32.69	32.60	32.79	32.82	32.70	32.77
9.0	32.98	32.86	32.74	32.46	32.43	32.39	32.63	32.62	32.45	32.52
12.0	32.79	32.68	32.46	32.13	32.07	32.11	32.40	32.35	32.13	32.16
15.0	32.55	32.36	32.09	31.69	31.63	31.75	32.08	31.99	31.71	31.70
18.0	32.21	31.99	31.62	31.13	31.11	31.30	31.68	31.58	31.19	31.12
21.0	31.83	31.58	31.06	30.48	30.52	30.80	31.23	31.03	30.58	30.45
24.0	31.36	31.14	30.43	29.76	29.81	30.26	30.71	30.49	29.90	29.68
27.0	30.84	30.64	29.69	28.93	29.03	29.59	30.15	29.79	29.11	28.84
30.0	30.30	30.13	28.86	28.00	28.16	28.86	29.52	29.10	28.24	27.89
33.0	29.78	29.54	27.98	27.01	27.24	28.05	28.83	28.29	27.28	26.85
36.0	28.99	28.79	27.03	25.93	26.23	27.17	28.09	27.46	26.27	25.77
39.0	28.31	27.51	26.03	24.74	25.15	26.30	27.33	26.57	25.18	24.56
42.0	27.70	26.66	24.94	23.53	24.00	25.41	26.63	25.64	24.02	23.33
45.0	27.12	25.81	23.81	22.24	22.80	24.54	25.94	24.77	22.82	22.03
48.0	26.50	25.03	22.67	20.88	21.52	23.66	25.24	23.90	21.57	20.62
51.0	25.79	24.25	21.49	19.48	20.21	22.80	24.52	23.03	20.27	19.20
54.0	25.05	23.40	20.28	18.07	18.88	21.89	23.75	22.14	18.94	17.73
57.0	24.29	22.53	19.07	16.54	17.54	20.99	22.98	21.21	17.64	16.20
60.0	23.52	21.65	17.89	15.05	16.27	20.08	22.22	20.27	16.37	14.70
63.0	22.73	20.74	16.76	13.42	15.00	19.24	21.47	19.41	15.15	13.09
66.0	21.94	19.84	15.68	11.84	13.75	18.37	20.69	18.50	13.91	11.50
69.0	21.14	18.96	14.56	10.18	12.55	17.53	19.98	17.68	12.73	9.929
72.0	20.32	18.05	13.48	8.541	11.40	16.66	19.22	16.85	11.59	8.357
75.0	19.53	17.21	12.45	6.936	10.32	15.85	18.45	16.04	10.51	6.751
78.0	18.70	16.35	11.47	5.349	9.347	15.04	17.68	15.24	9.561	5.240
81.0	17.86	15.53	10.61	3.853	8.473	14.22	16.88	14.44	8.703	3.888
84.0	16.98	14.66	9.803	2.573	7.656	13.38	16.07	13.60	7.892	2.691
87.0	16.07	13.78	9.069	1.591	6.887	12.55	15.20	12.79	7.152	1.858
90.0	15.11	12.89	8.376	1.094	6.201	11.69	14.30	11.91	6.466	1.517
93.0	14.15	12.01	7.731	1.053	5.598	10.88	13.43	11.10	5.864	1.462
96.0	13.23	11.18	7.191	1.046	5.099	10.10	12.56	10.33	5.359	1.420
99.0	12.35	10.35	6.238	1.011	4.676	9.376	11.73	9.608	4.916	1.365
102.0	11.38	9.569	5.605	1.004	4.364	8.732	10.93	8.950	4.584	1.330
105.0	10.47	8.591	4.643	1.004	4.101	8.102	10.19	8.292	4.307	1.295
108.0	9.706	7.298	4.387	1.004	3.866	7.575	9.451	7.738	4.058	1.274
111.0	8.743	6.758	3.473	1.011	3.637	7.070	8.828	7.211	3.836	1.240
114.0	8.105	5.706	2.883	1.011	3.408	6.620	8.233	6.761	3.614	1.191
117.0	7.537	5.506	2.785	1.039	3.201	6.170	7.679	6.332	3.393	1.150
120.0	7.032	5.297	2.639	1.164	2.993	5.761	7.167	5.909	3.185	1.115
123.0	6.341	5.041	2.418	1.212	2.792	5.387	6.689	5.542	2.984	1.074
126.0	5.735	4.653	1.885	1.212	2.612	4.999	6.211	5.147	2.797	1.025
129.0	5.459	4.369	1.821	1.184	2.397	4.618	5.761	4.773	2.582	0.9975
132.0	4.989	4.058	1.739	1.163	2.196	4.259	5.352	4.427	2.368	0.9628
135.0	4.531	3.599	1.587	1.045	2.009	3.912	4.909	4.066	2.153	0.9419
138.0	4.254	2.963	1.482	0.7614	1.843	3.580	4.486	3.741	1.980	0.9143
141.0	3.887	2.636	1.386	0.7064	1.697	3.275	4.092	3.415	1.759	0.8866
144.0	3.561	1.994	1.289	0.7064	1.566	2.929	3.704	3.090	1.592	0.8313
147.0	3.249	1.946	1.205	0.7064	1.434	2.583	3.213	2.730	1.426	0.7896
150.0	2.965	1.758	1.115	0.7134	1.220	2.285	2.894	2.376	1.280	0.7412
153.0	2.640	1.530	1.039	0.7134	1.102	2.042	2.534	2.168	1.066	0.7203
156.0	2.100	1.371	0.9905	0.7134	0.9906	1.800	2.229	1.912	0.9555	0.6926
159.0	1.754	1.212	0.9490	0.7203	0.9007	1.544	1.952	1.684	0.8584	0.6718
162.0	1.649	1.052	0.9075	0.7203	0.8244	1.225	1.668	1.448	0.7685	0.6580
165.0	1.434	0.9208	0.8658	0.7203	0.7759	1.031	1.342	1.171	0.7341	0.6580
168.0	1.192	0.8655	0.8380	0.7203	0.7551	0.8585	1.045	0.9978	0.7341	0.6580
171.0	0.8452	0.7892	0.8034	0.7342	0.7480	0.7411	0.8029	0.8591	0.7341	0.6580
174.0	0.7965	0.7341	0.7689	0.7411	0.7480	0.7411	0.7549	0.7758	0.7411	0.6580
177.0	0.7757	0.7341	0.7619	0.7480	0.7480	0.7411	0.7549	0.7618	0.7411	0.7202
180.0	0.7618	0.7272	0.7549	0.7480	0.7480	0.7411	0.7549	0.7480	0.7411	0.7411
G/C	300.0	330.0								
0.0	32.87	32.84								
3.0	32.86	32.90								
6.0	32.79	32.90								
9.0	32.62	32.84								
12.0	32.34	32.66								
15.0	31.97	32.38								
18.0	31.50	32.05								
21.0	30.94	31.61								
24.0	30.30	31.10								
27.0	29.56	30.54								
30.0	28.73	29.87								

C Range: 0 - 360DEG
 C Interval: 30.0DEG
 Test Speed: HIGH
 Temperature: 25.3DEG
 Operators: WFW
 Test Date: 2023-03-04

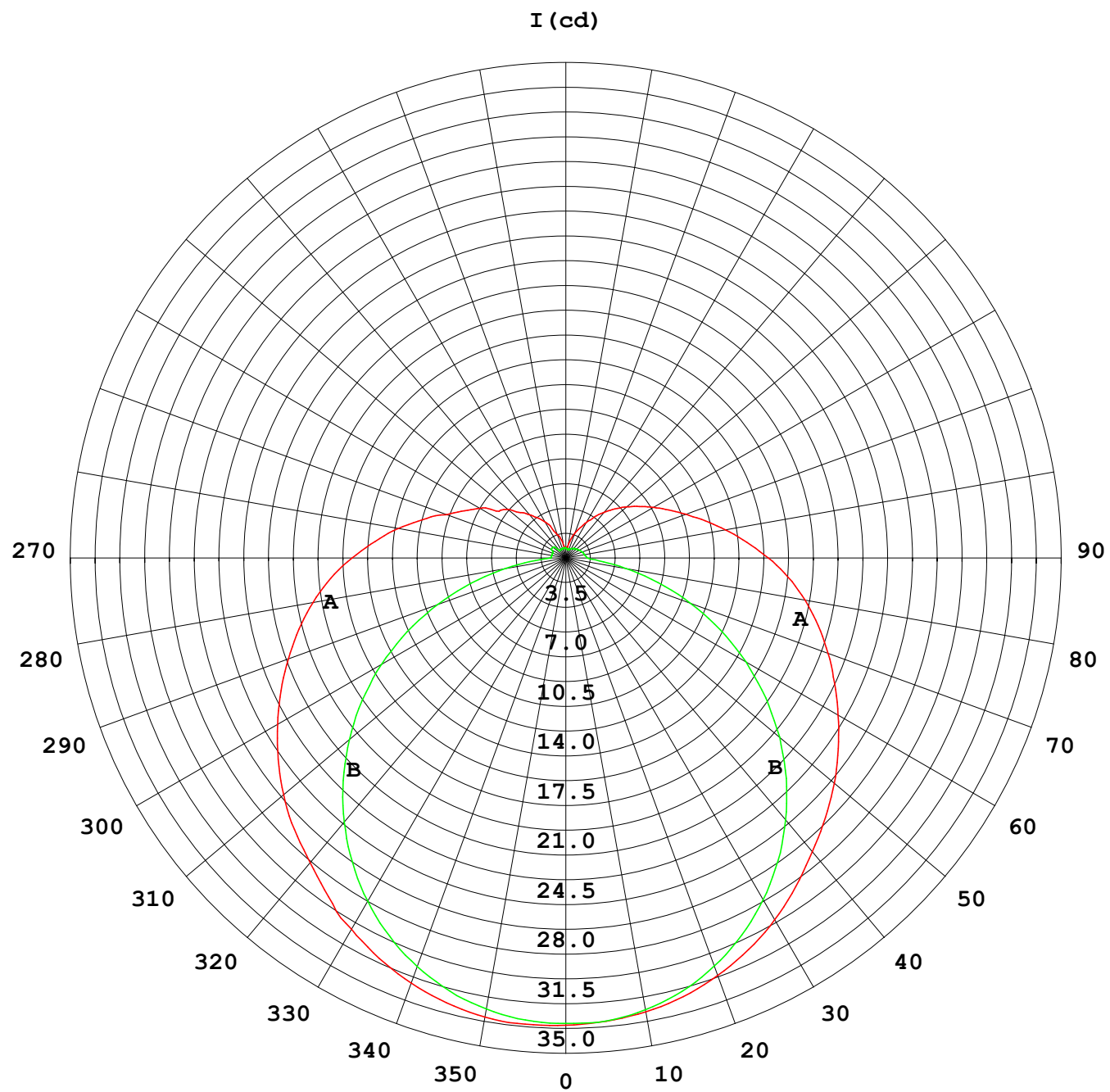
γ Range: 0 - 180DEG
 γ Interval: 1.0DEG
 Test System: EVERFINE GO-2000B_V1 SYSTEM V2.0.269
 Humidity: 65.0%
 Test Distance: 10.800m [K=1.0000]
 Remarks:

Photometric Data Table [cd]

33.0	27.82	29.15
36.0	26.85	28.38
39.0	25.82	27.55
42.0	24.74	26.68
45.0	23.62	25.83
48.0	22.51	25.02
51.0	21.38	24.23
54.0	20.22	23.44
57.0	19.07	22.55
60.0	17.86	21.65
63.0	16.75	20.77
66.0	15.59	19.86
69.0	14.46	19.00
72.0	13.31	18.13
75.0	12.21	17.27
78.0	11.19	16.43
81.0	10.25	15.60
84.0	9.388	14.75
87.0	8.613	13.91
90.0	7.844	13.01
93.0	7.131	12.14
96.0	6.479	11.31
99.0	5.572	10.48
102.0	4.853	9.691
105.0	4.354	8.805
108.0	3.925	7.967
111.0	3.629	7.274
114.0	3.329	6.733
117.0	3.018	6.138
120.0	2.743	5.673
123.0	2.714	5.341
126.0	2.492	4.988
129.0	2.299	4.566
132.0	2.119	4.246
135.0	1.987	3.769
138.0	1.821	3.367
141.0	1.627	2.909
144.0	1.468	2.578
147.0	1.343	2.210
150.0	1.205	1.891
153.0	1.101	1.808
156.0	0.9692	1.676
159.0	0.9139	1.462
162.0	0.8585	1.296
165.0	0.8172	1.129
168.0	0.7616	0.9976
171.0	0.7341	0.9076
174.0	0.7341	0.8245
177.0	0.7341	0.7896
180.0	0.7341	0.7549

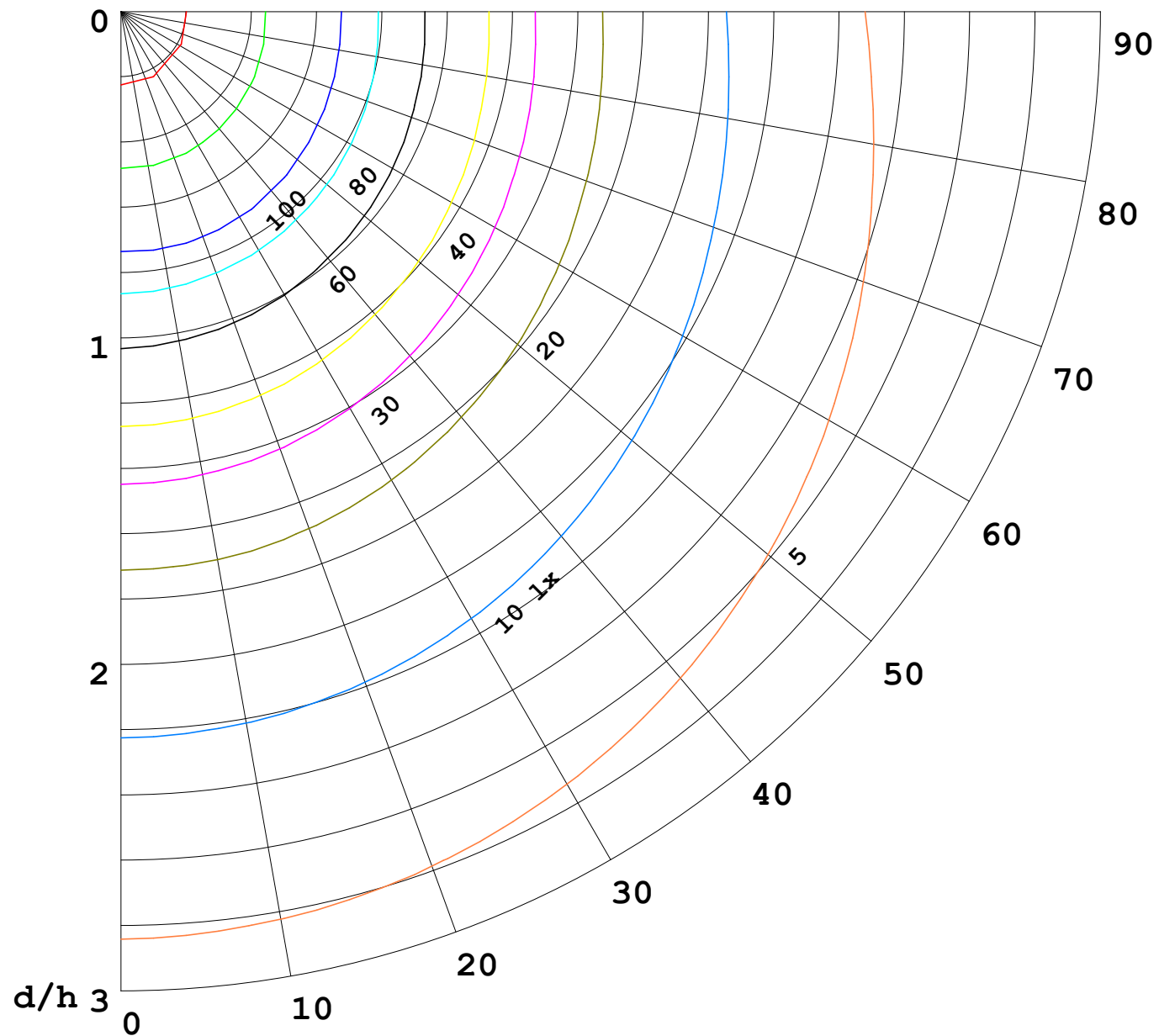
C Range: 0 - 360DEG
C Interval: 30.0DEG
Test Speed: HIGH
Temperature: 25.3DEG
Operators: WFW
Test Date: 2023-03-04

γ Range: 0 - 180DEG
γ Interval: 1.0DEG
Test System: EVERFINE GO-2000B_V1 SYSTEM V2.0.269
Humidity: 65.0%
Test Distance: 10.800m [K=1.0000]
Remarks:



1000 lm

$\kappa = 1$



F = 5000 lm
 K = 0.7
 Hcc = 0.0 m
 Hfc = 0.0 m
 Eave = 100 lx

	Pcc	Pw	Pfc
—	70	50	30
—	50	30	20

