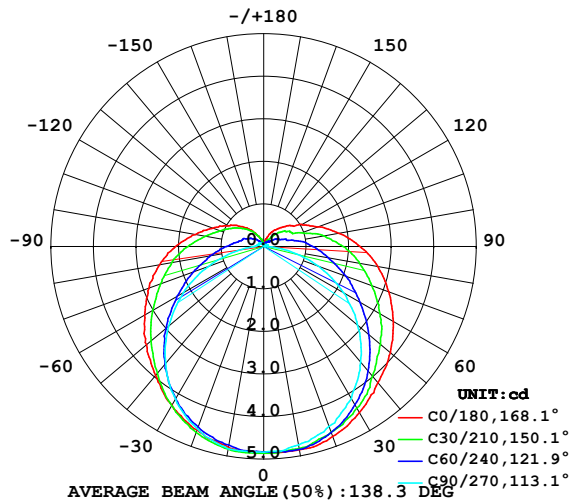


## LUMINAIRE PHOTOMETRIC TEST REPORT

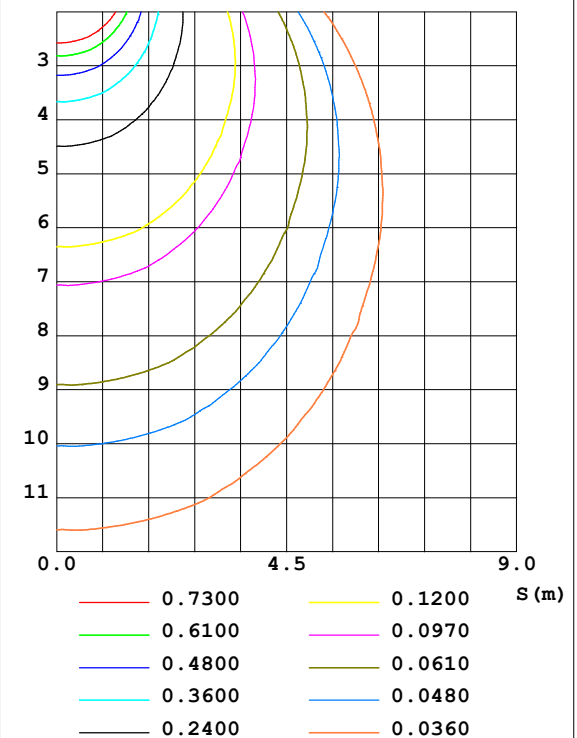
Test:U:24.00V I:0.2391A P:5.738W PF:1.000 Lamp Flux:22.0758x1 lm		
NAME: SF21-24V-5050-70-SPI4-RGBW-4000K-B	TYPE: 硅胶	WEIGHT:
DIM.: 28MM*11.5MM	SPEC.:	SERIAL No.:202303005
MFR.: OLYMPIA	SUR.:1.0*0.0115	PROTECTION ANGLE:

DATA OF LAMP		PHOTOMETRIC DATA				Eff: 3.85 lm/W
MODEL	5050	I <sub>max</sub> (cd)	4.869	S/MH (C0/180)	1.38	
NOMINAL POWER (W)	18	LOR (%)	100.0	S/MH (C90/270)	1.26	
RATED VOLTAGE (V)	24	TOTAL FLUX (lm)	22.076	η UP, DN (C0-180)	8.5, 41.2	
NOMINAL FLUX (lm)	22.0758	CIE CLASS	SEMI-D.	η UP, DN (C180-360)	9.1, 41.2	
LAMPS INSIDE	1	η up (%)	17.6	CIBSE SHR NOM	1.50	
TEST VOLTAGE (V)	24.0	η down (%)	82.4	CIBSE SHR MAX	1.55	

LUMINOUS INTENSITY DISTRIBUTION DIAGRAM



C0 PLANE ISOLUX DIAGRAM (UNIT: lx)



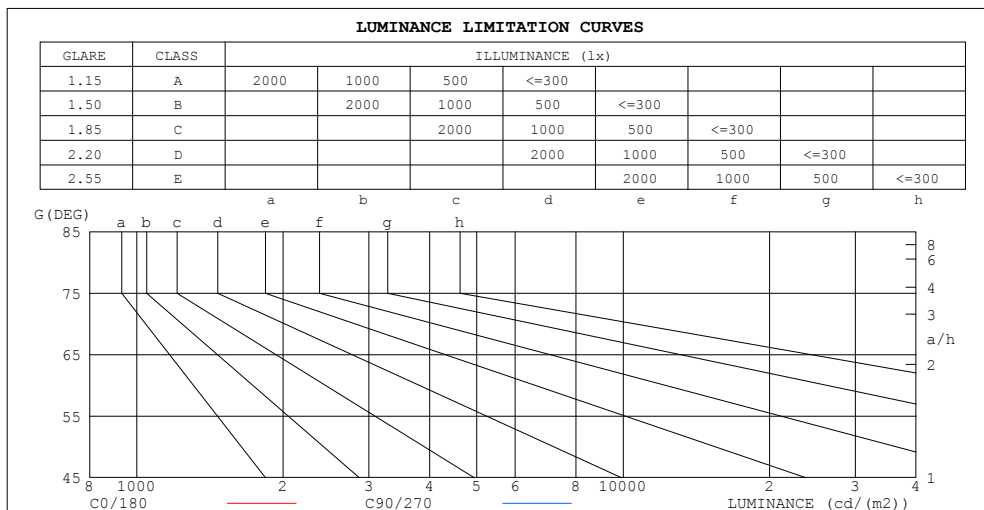
C Range: 0 - 360DEG  
C Interval: 30.0DEG  
Test Speed: HIGH  
Temperature: 25.3DEG  
Operators: WFW  
Test Date: 2023-03-04

γ Range: 0 - 180DEG  
γ Interval: 1.0DEG  
Test System: EVERFINE GO-2000B\_V1 SYSTEM V2.0.269  
Humidity: 65.0%  
Test Distance: 10.800m [K=1.0000]  
Remarks:

ZONAL FLUX DIAGRAM  
AND LUMINANCE LIMITATION CURVES

## ZONAL FLUX DIAGRAM:

$\gamma$	C0	C45	C90	C135	C180	C225	C270	C315	$\gamma$	$\Phi$ zone	$\Phi$ total	%lum, lamp
10	4.855	4.834	4.737	4.758	4.799	4.786	4.827	4.803	0- 10	0.4603	0.4603	2.09,2.09
20	4.751	4.647	4.502	4.540	4.592	4.581	4.564	4.661	10- 20	1.334	1.795	8.13,8.13
30	4.509	4.343	4.127	4.187	4.315	4.235	4.149	4.349	20- 30	2.057	3.852	17.4,17.4
40	4.177	3.903	3.552	3.716	3.954	3.750	3.588	3.937	30- 40	2.545	6.396	29,29
50	3.893	3.408	2.881	3.193	3.601	3.227	2.923	3.463	40- 50	2.764	9.160	41.5,41.5
60	3.519	2.881	2.153	2.639	3.234	2.683	2.182	2.957	50- 60	2.736	11.90	53.9,53.9
70	3.131	2.383	1.378	2.140	2.867	2.168	1.386	2.469	60- 70	2.496	14.39	65.2,65.2
80	2.729	1.915	0.5948	1.687	2.486	1.741	0.6377	2.012	70- 80	2.116	16.51	74.8,74.8
90	2.265	1.513	0.0831	1.281	2.070	1.326	0.2217	1.614	80- 90	1.685	18.19	82.4,82.4
100	1.801	1.112	0.0831	0.9662	1.641	1.004	0.1594	1.229	90-100	1.292	19.49	88.3,88.3
110	1.344	0.7205	0.0831	0.7480	1.267	0.8001	0.1385	0.9073	100-110	0.9425	20.43	92.5,92.5
120	1.039	0.5298	0.0831	0.5887	0.9763	0.6234	0.1385	0.6615	110-120	0.6659	21.09	95.6,95.6
130	0.7691	0.3602	0.0623	0.4535	0.7408	0.4710	0.1178	0.4606	120-130	0.4573	21.55	97.6,97.6
140	0.5542	0.2285	0.0277	0.3116	0.5330	0.3290	0.0901	0.2841	130-140	0.2822	21.83	98.9,98.9
150	0.4018	0.1420	0.0346	0.1732	0.3183	0.1974	0.0555	0.1593	140-150	0.1487	21.98	99.6,99.6
160	0.2011	0.0692	0.0346	0.0865	0.1662	0.1247	0.0416	0.1039	150-160	0.0662	22.05	99.9,99.9
170	0.0762	0.0589	0.0346	0.0554	0.0554	0.0659	0.0485	0.0589	160-170	0.0226	22.07	100,100
180	0.0623	0.0416	0.0346	0.0519	0.0554	0.0519	0.0346	0.0450	170-180	0.0052	22.08	100,100
DEG	LUMINOUS INTENSITY:cd									UNIT:lm		



LUMINANCE cd/(m2)		
G (DEG)	C0/180	C90/270
85	288	30
80	157	34
75	113	37
70	92	40
65	79	42
60	70	43
55	65	44
50	61	45
45	57	46

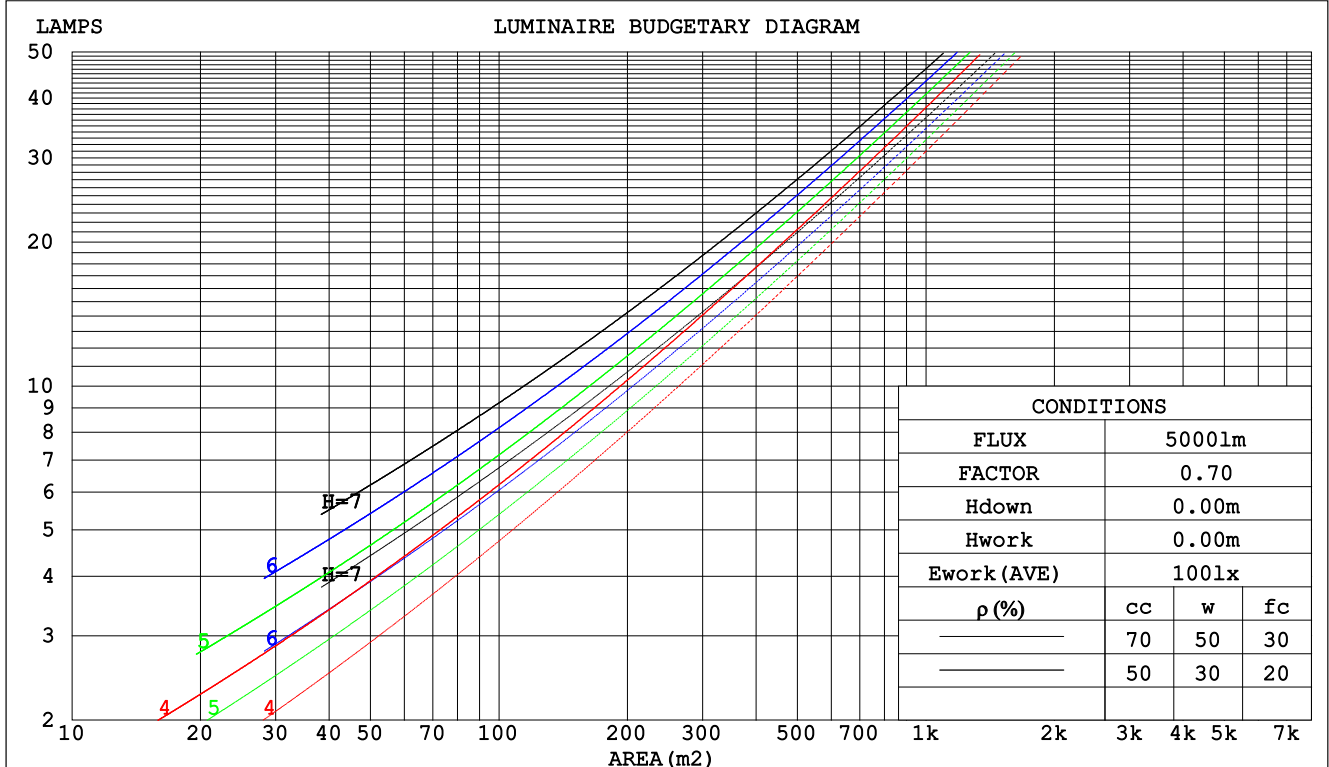
C Range: 0 - 360DEG  
C Interval: 30.0DEG  
Test Speed: HIGH  
Temperature:25.3DEG  
Operators:WFW  
Test Date:2023-03-04

$\gamma$  Range: 0 - 180DEG  
 $\gamma$  Interval: 1.0DEG  
Test System:EVERFINE GO-2000B\_V1 SYSTEM V2.0.269  
Humidity:65.0%  
Test Distance:10.800m [K=1.0000]  
Remarks:

## CU AND LUMINAIRE BUDGETARY ESTIMATE DIAGRAM

Test:U:24.00V I:0.2391A P:5.738W PF:1.000 Lamp Flux:22.0758x1 lm		
NAME: SF21-24V-5050-70-SPI4-RGBW-4000K-B	TYPE: 硅胶	WEIGHT:
DIM.: 28MM*11.5MM	SPEC.:	SERIAL No.:202303005
MFR.: OLYMPIA	SUR.:1.0*0.0115	PROTECTION ANGLE:

pcc	80%			70%			50%			30%			10%			0
pw	50%	30%	10%	50%	30%	10%	50%	30%	10%	50%	30%	10%	50%	30%	10%	0
pfc	20%			20%			20%			20%			20%			0
RCR	RCR:Room Cavity Ratio			Coefficients of Utilization(CU)												
0.0	1.15	1.15	1.15	1.10	1.10	1.10	1.01	1.01	1.01	.93	.93	.93	.86	.86	.86	.82
1.0	.96	.90	.85	.92	.87	.82	.84	.80	.77	.77	.74	.71	.71	.68	.66	.62
2.0	.82	.74	.67	.78	.71	.65	.72	.66	.61	.66	.61	.57	.60	.56	.53	.50
3.0	.71	.62	.55	.68	.60	.53	.62	.56	.50	.57	.52	.47	.52	.48	.44	.41
4.0	.62	.53	.46	.60	.51	.44	.55	.48	.42	.51	.44	.39	.46	.41	.37	.34
5.0	.55	.46	.39	.53	.44	.38	.49	.41	.36	.45	.39	.34	.41	.36	.32	.29
6.0	.50	.40	.33	.48	.39	.33	.44	.37	.31	.41	.34	.29	.37	.32	.28	.25
7.0	.45	.36	.29	.43	.35	.29	.40	.32	.27	.37	.30	.26	.34	.29	.24	.22
8.0	.41	.32	.26	.39	.31	.25	.36	.29	.24	.34	.27	.23	.31	.26	.22	.20
9.0	.37	.29	.23	.36	.28	.23	.33	.26	.22	.31	.25	.20	.29	.23	.19	.17
10.0	.34	.26	.21	.33	.25	.20	.31	.24	.19	.29	.23	.19	.27	.21	.18	.16



C Range: 0 - 360DEG  
C Interval: 30.0DEG  
Test Speed: HIGH  
Temperature:25.3DEG  
Operators:WFW  
Test Date:2023-03-04

γ Range: 0 - 180DEG  
γ Interval: 1.0DEG  
Test System:EVERFINE GO-2000B\_V1 SYSTEM V2.0.269  
Humidity:65.0%  
Test Distance:10.800m [K=1.0000]  
Remarks:

## WEC AND CCEC

Test:U:24.00V I:0.2391A P:5.738W PF:1.000 Lamp Flux:22.0758x1 lm		
NAME: SF21-24V-5050-70-SPI4-RGBW-4000K-B	TYPE: 硅胶	WEIGHT:
DIM.: 28MM*11.5MM	SPEC.:	SERIAL No.:202303005
MFR.: OLYMPIA	SUR.:1.0*0.0115	PROTECTION ANGLE:

pcc	80%			70%			50%			30%			10%			0	
pw	50%	30%	10%	50%	30%	10%	50%	30%	10%	50%	30%	10%	50%	30%	10%	0	
pfc	20%			20%			20%			20%			20%			0	
RCR	RCR:Room Cavity Ratio						Wall Exitance Coefficients(WEC)										
0.0																	
1.0	.387	.220	.070	.374	.213	.068	.351	.201	.064	.329	.190	.061	.309	.179	.058		
2.0	.334	.183	.056	.323	.178	.055	.301	.168	.052	.282	.158	.049	.264	.149	.047		
3.0	.297	.158	.047	.286	.153	.046	.267	.145	.044	.249	.137	.042	.233	.129	.040		
4.0	.267	.139	.041	.258	.135	.040	.240	.127	.038	.224	.120	.036	.209	.113	.035		
5.0	.242	.124	.036	.234	.120	.035	.218	.114	.033	.203	.107	.032	.190	.101	.030		
6.0	.222	.111	.032	.214	.108	.031	.200	.103	.030	.187	.097	.028	.174	.092	.027		
7.0	.205	.101	.029	.198	.099	.028	.185	.093	.027	.172	.088	.026	.161	.083	.025		
8.0	.190	.093	.026	.184	.090	.026	.171	.086	.024	.160	.081	.023	.149	.077	.022		
9.0	.177	.086	.024	.171	.083	.023	.160	.079	.022	.149	.075	.021	.140	.071	.020		
10.0	.166	.079	.022	.160	.077	.022	.150	.073	.021	.140	.070	.020	.131	.066	.019		

pcc	80%			70%			50%			30%			10%			0
pw	50%	30%	10%	50%	30%	10%	50%	30%	10%	50%	30%	10%	50%	30%	10%	0
pfc	20%			20%			20%			20%			20%			0
RCR	RCR:Room Cavity Ratio						Ceiling Cavity Exitance Coefficients(CCEC)									
0.0	.324	.324	.324	.277	.277	.277	.189	.189	.189	.109	.109	.109	.035	.035	.035	
1.0	.321	.291	.263	.274	.249	.227	.188	.172	.157	.108	.099	.091	.035	.032	.029	
2.0	.314	.268	.229	.269	.230	.198	.184	.159	.138	.106	.093	.081	.034	.030	.026	
3.0	.306	.251	.207	.263	.217	.180	.180	.151	.126	.104	.088	.074	.033	.029	.024	
4.0	.299	.239	.193	.256	.206	.168	.176	.144	.118	.102	.084	.070	.033	.027	.023	
5.0	.291	.229	.183	.250	.198	.159	.172	.138	.113	.100	.081	.067	.032	.027	.022	
6.0	.283	.221	.176	.244	.191	.153	.168	.134	.109	.097	.079	.065	.031	.026	.021	
7.0	.276	.214	.171	.238	.186	.149	.164	.130	.106	.095	.077	.063	.031	.025	.021	
8.0	.270	.209	.167	.232	.181	.146	.161	.127	.103	.093	.075	.062	.030	.025	.020	
9.0	.263	.204	.164	.227	.177	.143	.157	.124	.102	.092	.073	.061	.030	.024	.020	
10.0	.257	.200	.161	.222	.174	.141	.154	.122	.100	.090	.072	.060	.029	.024	.020	

C Range: 0 - 360DEG  
 C Interval: 30.0DEG  
 Test Speed: HIGH  
 Temperature:25.3DEG  
 Operators:WFW  
 Test Date:2023-03-04

γ Range: 0 - 180DEG  
 γ Interval: 1.0DEG  
 Test System:EVERFINE GO-2000B\_V1 SYSTEM V2.0.269  
 Humidity:65.0%  
 Test Distance:10.800m [K=1.0000]  
 Remarks:

### Uncorrected UGR Table

Test:U:24.00V I:0.2391A P:5.738W PF:1.000 Lamp Flux:22.0758x1 lm											
NAME: SF21-24V-5050-70-SPI4-RGBW-4000K-B						TYPE:硅胶			WEIGHT:		
DIM.: 28MM*11.5MM						SPEC.:			SERIAL No.:202303005		
MFR.: OLYMPIA						SUR.:1.0*0.0115			PROTECTION ANGLE:		
ceiling/cavity	0.7	0.7	0.5	0.5	0.3	0.7	0.7	0.5	0.5	0.3	
walls	0.5	0.3	0.5	0.3	0.3	0.5	0.3	0.5	0.3	0.3	
working plane	0.2	0.2	0.2	0.2	0.2	0.2	0.2	0.2	0.2	0.2	
Room dimensions	Viewed crosswise					Viewed endwise					
x = 2H y = 2H	2.6	4.0	3.1	4.5	5.1	0.8	2.2	1.3	2.7	3.3	
	3H	5.3	6.6	5.9	7.1	7.7	2.5	3.8	3.0	4.3	4.9
	4H	6.9	8.1	7.4	8.6	9.2	3.2	4.4	3.7	4.9	5.6
	6H	8.6	9.7	9.1	10.3	10.9	3.7	4.9	4.3	5.4	6.1
	8H	9.5	10.6	10.1	11.2	11.8	3.9	5.0	4.5	5.6	6.2
	12H	10.6	11.6	11.2	12.2	12.9	4.0	5.0	4.6	5.6	6.3
4H	2H	3.2	4.4	3.8	5.0	5.6	1.9	3.1	2.5	3.7	4.3
	3H	6.1	7.2	6.7	7.8	8.5	3.9	4.9	4.4	5.5	6.2
	4H	7.9	8.8	8.5	9.4	10.1	4.8	5.7	5.4	6.4	7.1
	6H	9.8	10.6	10.4	11.3	12.0	5.5	6.4	6.2	7.0	7.8
	8H	10.8	11.6	11.5	12.3	13.1	5.8	6.6	6.5	7.3	8.0
	12H	12.0	12.8	12.7	13.5	14.2	6.0	6.8	6.7	7.5	8.2
8H	4H	8.2	9.0	8.9	9.7	10.4	5.8	6.6	6.4	7.2	8.0
	6H	10.4	11.1	11.1	11.8	12.6	6.9	7.6	7.6	8.3	9.1
	8H	11.7	12.3	12.4	13.0	13.8	7.5	8.1	8.2	8.8	9.6
	12H	13.2	13.7	13.9	14.4	15.3	8.0	8.5	8.7	9.2	10.1
12H	4H	8.3	9.0	8.9	9.7	10.4	6.1	6.8	6.8	7.5	8.3
	6H	10.5	11.2	11.2	11.9	12.7	7.5	8.1	8.2	8.8	9.6
	8H	11.9	12.5	12.7	13.2	14.0	8.2	8.8	8.9	9.5	10.3
Variations with the observer position at spacings:											
S = 1.0H	+ 0.1 / - 0.1					+ 0.1 / - 0.1					
1.5H	+ 0.2 / - 0.2					+ 0.2 / - 0.3					
2.0H	+ 0.2 / - 0.3					+ 0.2 / - 0.4					

CIE Pub.117 Corrected 22.08 lm Total Lamp Luminous Flux. (8log(F/F0) = -13.2)

C Range: 0 - 360DEG  
C Interval: 30.0DEG  
Test Speed: HIGH  
Temperature:25.3DEG  
Operators:WFW  
Test Date:2023-03-04

γ Range: 0 - 180DEG  
γ Interval: 1.0DEG  
Test System:EVERFINE GO-2000B\_V1 SYSTEM V2.0.269  
Humidity:65.0%  
Test Distance:10.800m [K=1.0000]  
Remarks:

## UTILIZATION FACTORS TABLE

Test:U:24.00V I:0.2391A P:5.738W PF:1.000 Lamp Flux:22.0758x1 lm		
NAME: SF21-24V-5050-70-SPI4-RGBW-4000K-B	TYPE: 硅胶	WEIGHT:
DIM.: 28MM*11.5MM	SPEC.:	SERIAL No.:202303005
MFR.: OLYMPIA	SUR.:1.0*0.0115	PROTECTION ANGLE:

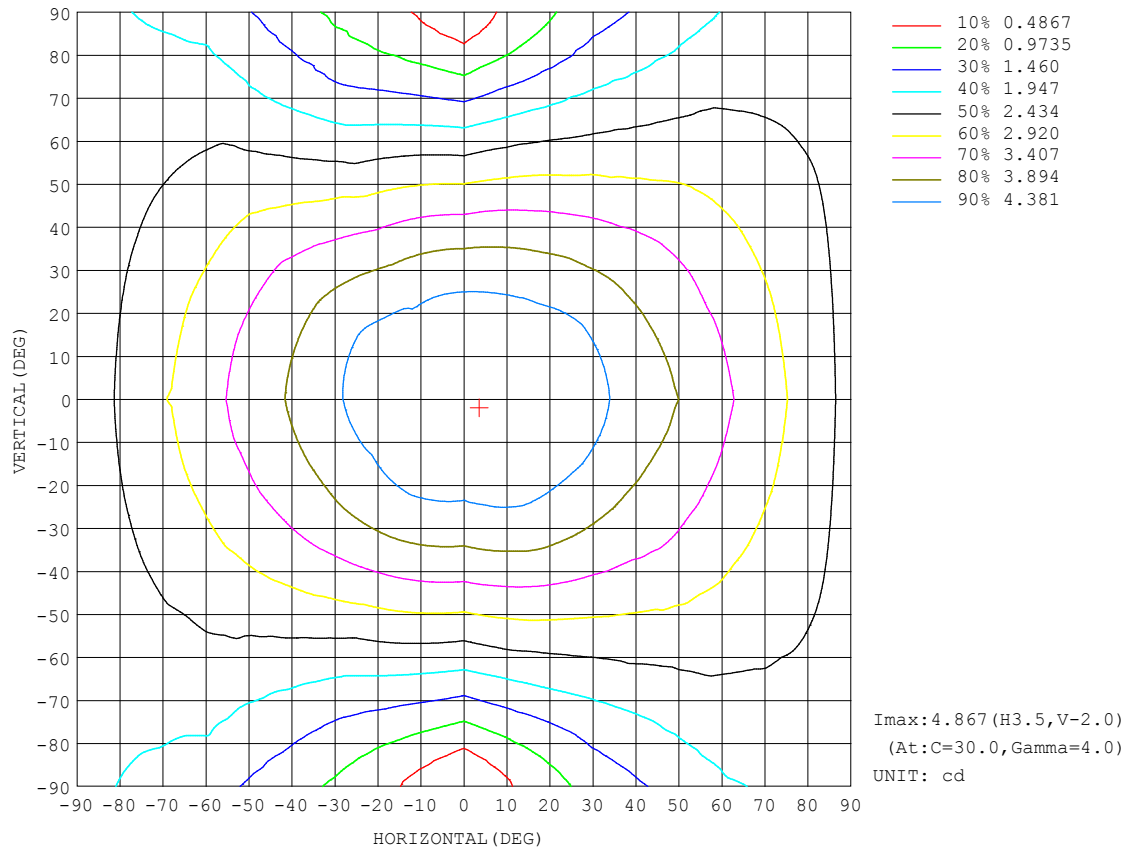
REFLECTANCE										
Ceiling	0.8	0.8	0.8	0.7	0.7	0.7	0.5	0.5	0.5	0
Walls	0.7	0.5	0.3	0.7	0.5	0.3	0.7	0.5	0.3	0
Working plane	0.2	0.2	0.2	0.2	0.2	0.2	0.2	0.2	0.2	0
ROOM INDEX	UTILIZATION FACTORS (PERCENT) $k(RI) \times RCR = 5$									
$k = 0.60$	48	36	28	47	35	28	45	34	28	21
0.80	57	44	36	56	43	36	53	42	35	27
1.00	65	52	43	63	51	43	59	51	42	33
1.25	72	59	50	69	58	50	65	55	48	39
1.50	77	65	56	74	63	55	69	60	53	43
2.00	84	73	65	81	71	63	75	67	60	49
2.50	88	78	70	85	76	69	79	71	65	53
3.00	92	83	75	89	80	73	82	75	70	56
4.00	97	89	82	93	86	80	86	80	75	61
5.00	100	93	87	96	90	84	88	83	79	64
ROOM INDEX	UF (total)									Direct
According to DIN EN 13032-2 2004			Suspended					SHRNM = 1.25		

C Range: 0 - 360DEG  
 C Interval: 30.0DEG  
 Test Speed: HIGH  
 Temperature: 25.3DEG  
 Operators: WFW  
 Test Date: 2023-03-04

$\gamma$  Range: 0 - 180DEG  
 $\gamma$  Interval: 1.0DEG  
 Test System: EVERFINE GO-2000B\_V1 SYSTEM V2.0.269  
 Humidity: 65.0%  
 Test Distance: 10.800m [K=1.0000]  
 Remarks:

## ISOCANDELA DIAGRAM

Test:U:24.00V I:0.2391A P:5.738W PF:1.000 Lamp Flux:22.0758x1 lm		
NAME: SF21-24V-5050-70-SPI4-RGBW-4000K-B	TYPE: 硅胶	WEIGHT:
DIM.: 28MM*11.5MM	SPEC.:	SERIAL No.:202303005
MFR.: OLYMPIA	SUR.:1.0*0.0115	PROTECTION ANGLE:

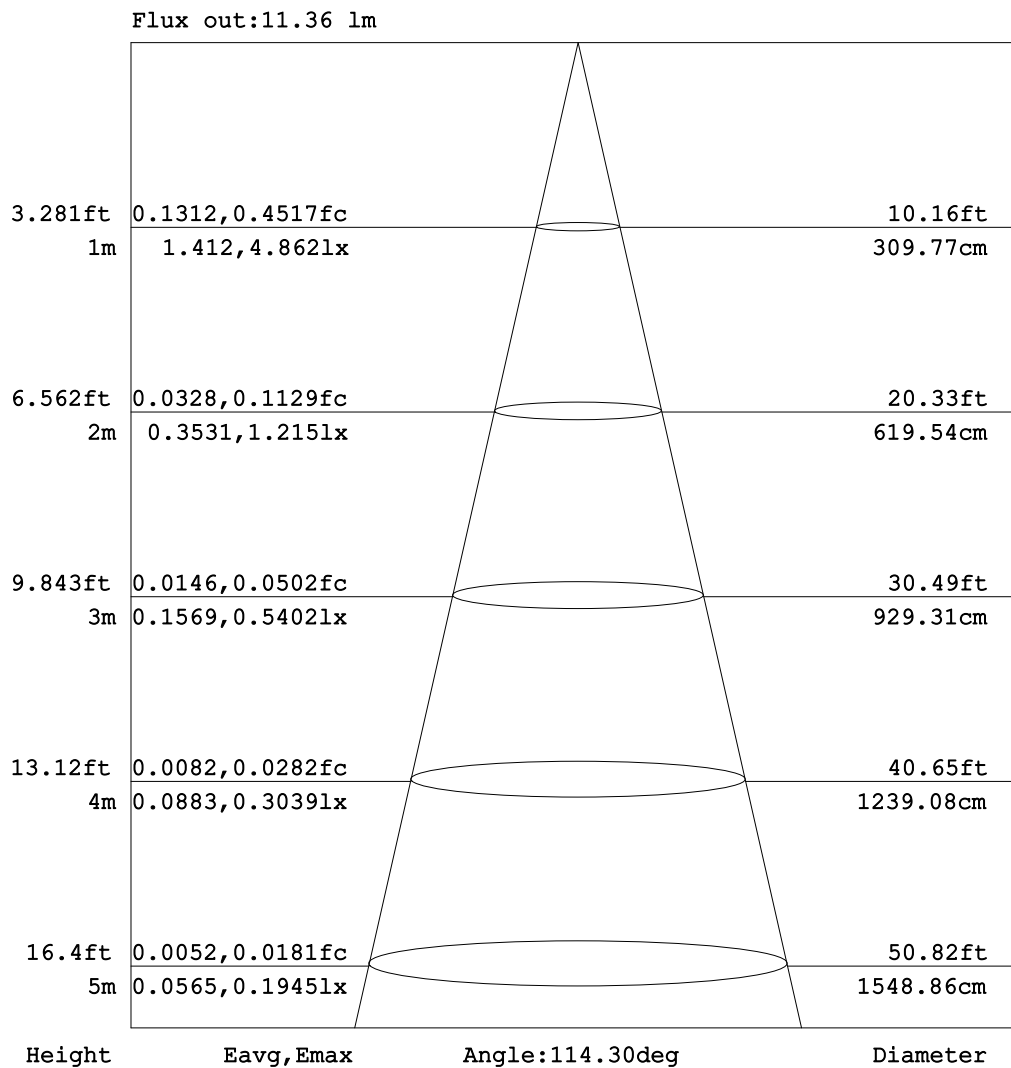


C Range: 0 - 360DEG  
C Interval: 30.0DEG  
Test Speed: HIGH  
Temperature: 25.3DEG  
Operators: WFW  
Test Date: 2023-03-04

$\gamma$  Range: 0 - 180DEG  
 $\gamma$  Interval: 1.0DEG  
Test System: EVERFINE GO-2000B\_V1 SYSTEM V2.0.269  
Humidity: 65.0%  
Test Distance: 10.800m [K=1.0000]  
Remarks:

## AAI Figure

Test:U:24.00V I:0.2391A P:5.738W PF:1.000 Lamp Flux:22.0758x1 lm		
NAME: SF21-24V-5050-70-SPI4-RGBW-4000K-B	TYPE: 硅胶	WEIGHT:
DIM.: 28MM*11.5MM	SPEC.:	SERIAL No.:202303005
MFR.: OLYMPIA	SUR.:1.0*0.0115	PROTECTION ANGLE:



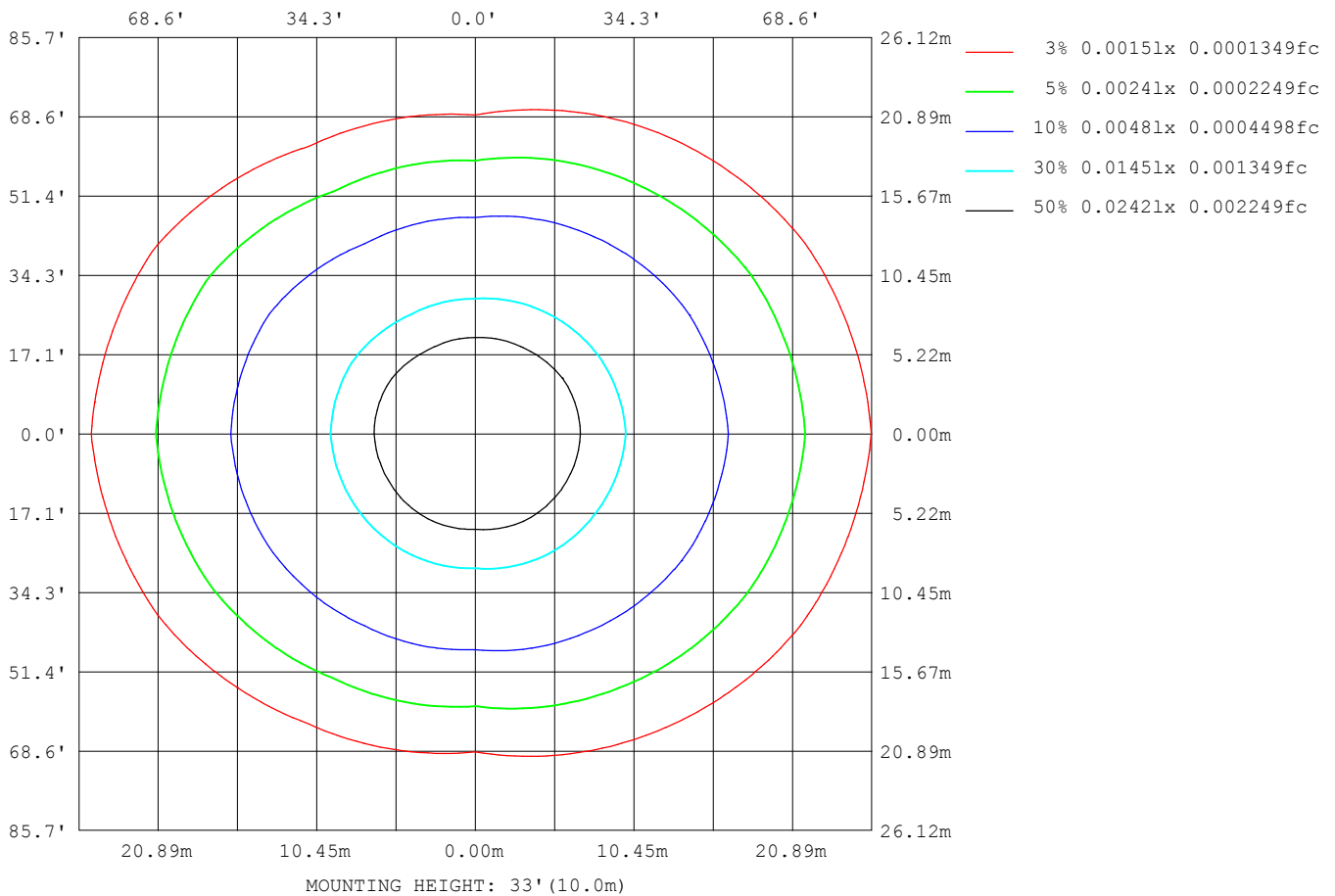
Note: The Curves indicate the illuminated area and the average illumination when the luminaire is at different distance.

C Range: 0 - 360DEG  
C Interval: 30.0DEG  
Test Speed: HIGH  
Temperature: 25.3DEG  
Operators: WFW  
Test Date: 2023-03-04

γ Range: 0 - 180DEG  
γ Interval: 1.0DEG  
Test System: EVERFINE GO-2000B\_V1 SYSTEM V2.0.269  
Humidity: 65.0%  
Test Distance: 10.800m [K=1.0000]  
Remarks:

## ISOLUX DIAGRAM

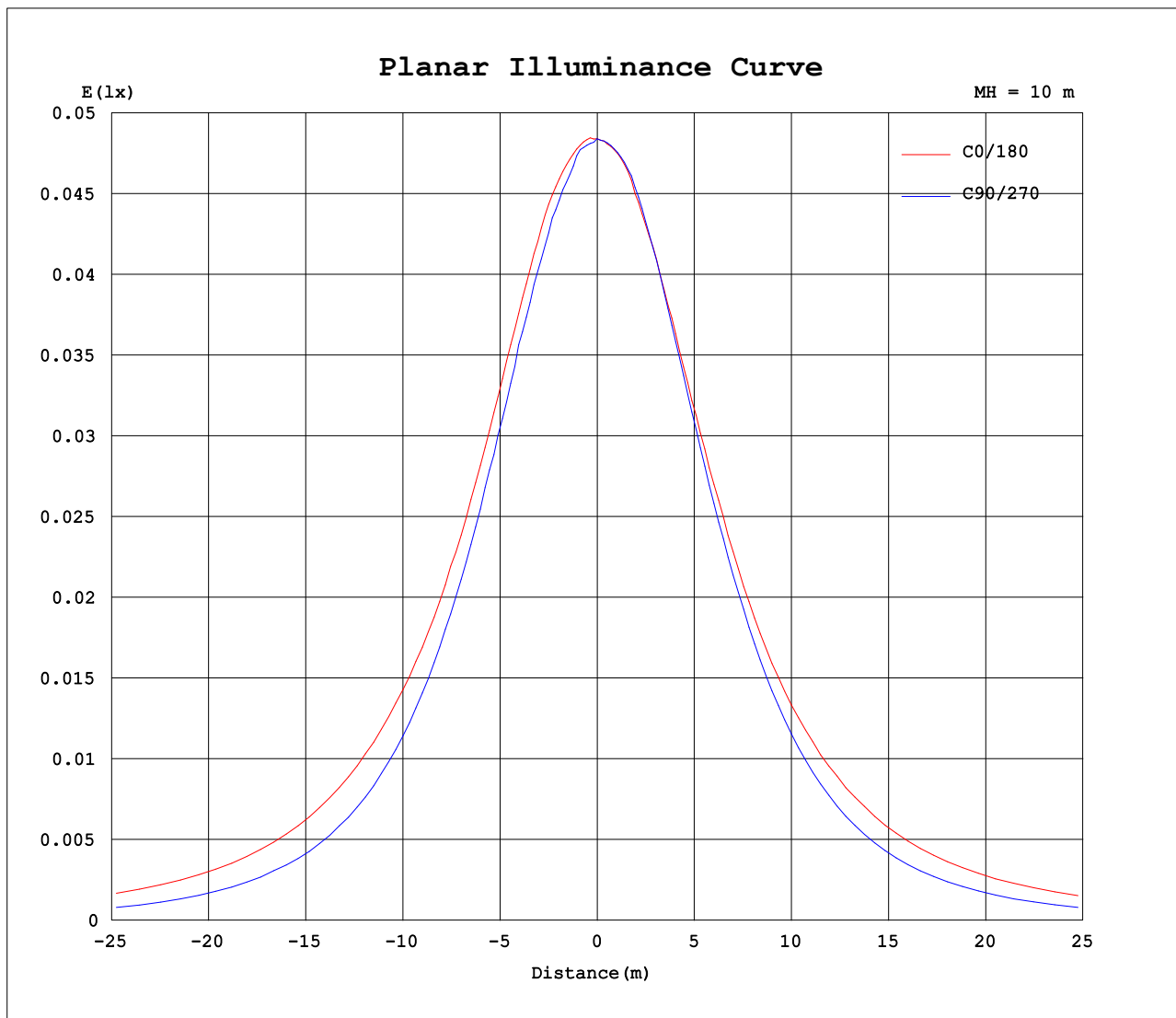
Test:U:24.00V I:0.2391A P:5.738W PF:1.000 Lamp Flux:22.0758x1 lm		
NAME: SF21-24V-5050-70-SPI4-RGBW-4000K-B	TYPE: 硅胶	WEIGHT:
DIM.: 28MM*11.5MM	SPEC.:	SERIAL No.:202303005
MFR.: OLYMPIA	SUR.:1.0*0.0115	PROTECTION ANGLE:



C Range: 0 - 360DEG  
C Interval: 30.0DEG  
Test Speed: HIGH  
Temperature: 25.3DEG  
Operators: WFW  
Test Date: 2023-03-04

$\gamma$  Range: 0 - 180DEG  
 $\gamma$  Interval: 1.0DEG  
Test System: EVERFINE GO-2000B\_V1 SYSTEM V2.0.269  
Humidity: 65.0%  
Test Distance: 10.800m [K=1.0000]  
Remarks:

## Planar Illuminance Curve



C Range: 0 - 360DEG  
C Interval: 30.0DEG  
Test Speed: HIGH  
Temperature: 25.3DEG  
Operators: WFW  
Test Date: 2023-03-04

$\gamma$  Range: 0 - 180DEG  
 $\gamma$  Interval: 1.0DEG  
Test System: EVERFINE GO-2000B\_V1 SYSTEM V2.0.269  
Humidity: 65.0%  
Test Distance: 10.800m [K=1.0000]  
Remarks:

## LUMINOUS DISTRIBUTION INTENSITY DATA

Test:U:24.00V I:0.2391A P:5.738W PF:1.000 Lamp Flux:22.0758x1 lm		
NAME: SF21-24V-5050-70-SPI4-RGBW-4000K-B	TYPE: 硅胶	WEIGHT:
DIM.: 28MM*11.5MM	SPEC.:	SERIAL No.:202303005
MFR.: OLYMPIA	SUR.:1.0*0.0115	PROTECTION ANGLE:

Table--1

UNIT: cd

C (DEG) γ (DEG)	0	30	60	90	120	150	180	210	240	270	300	330						
0	4.84	4.86	4.83	4.84	4.83	4.83	4.84	4.86	4.83	4.84	4.83	4.83						
5	4.86	4.83	4.83	4.83	4.83	4.82	4.83	4.86	4.82	4.83	4.83	4.84						
10	4.86	4.82	4.85	4.74	4.80	4.72	4.80	4.83	4.74	4.83	4.76	4.84						
15	4.85	4.74	4.77	4.64	4.70	4.64	4.70	4.76	4.65	4.72	4.69	4.81						
20	4.75	4.64	4.65	4.50	4.56	4.52	4.59	4.65	4.51	4.56	4.58	4.74						
25	4.65	4.53	4.49	4.31	4.39	4.38	4.47	4.50	4.36	4.38	4.41	4.61						
30	4.51	4.39	4.29	4.13	4.18	4.20	4.31	4.33	4.14	4.15	4.24	4.46						
35	4.34	4.24	4.08	3.84	3.94	4.00	4.16	4.12	3.90	3.89	4.02	4.29						
40	4.18	3.98	3.82	3.55	3.66	3.77	3.95	3.89	3.61	3.59	3.82	4.06						
45	4.04	3.76	3.53	3.23	3.36	3.55	3.77	3.67	3.31	3.27	3.54	3.84						
50	3.89	3.59	3.23	2.88	3.04	3.34	3.60	3.46	3.00	2.92	3.28	3.65						
55	3.71	3.39	2.92	2.53	2.72	3.14	3.42	3.23	2.66	2.55	2.98	3.44						
60	3.52	3.16	2.60	2.15	2.39	2.89	3.23	3.01	2.35	2.18	2.70	3.21						
65	3.32	2.94	2.32	1.77	2.10	2.68	3.05	2.78	2.05	1.79	2.40	3.01						
70	3.13	2.71	2.06	1.38	1.79	2.49	2.87	2.58	1.76	1.39	2.15	2.79						
75	2.93	2.50	1.79	0.96	1.53	2.26	2.69	2.38	1.48	0.99	1.90	2.58						
80	2.73	2.29	1.54	0.59	1.29	2.08	2.49	2.20	1.29	0.64	1.65	2.37						
85	2.51	2.08	1.34	0.26	1.09	1.88	2.28	1.99	1.05	0.36	1.46	2.17						
90	2.27	1.87	1.16	0.08	0.90	1.66	2.07	1.78	0.87	0.22	1.27	1.96						
95	2.04	1.63	1.00	0.08	0.76	1.47	1.85	1.58	0.73	0.19	1.11	1.74						
100	1.80	1.44	0.78	0.08	0.65	1.28	1.64	1.39	0.62	0.16	0.93	1.53						
105	1.58	1.19	0.57	0.08	0.58	1.12	1.47	1.23	0.55	0.16	0.77	1.32						
110	1.34	0.95	0.49	0.08	0.51	0.98	1.27	1.09	0.51	0.14	0.71	1.11						
115	1.18	0.75	0.40	0.08	0.46	0.87	1.14	0.98	0.44	0.14	0.60	0.97						
120	1.04	0.71	0.35	0.08	0.42	0.76	0.98	0.86	0.39	0.14	0.49	0.83						
125	0.85	0.62	0.27	0.08	0.35	0.66	0.87	0.76	0.33	0.13	0.38	0.74						
130	0.77	0.54	0.18	0.06	0.30	0.60	0.74	0.67	0.28	0.12	0.28	0.64						
135	0.65	0.42	0.17	0.04	0.25	0.50	0.63	0.58	0.22	0.10	0.21	0.53						
140	0.55	0.30	0.15	0.03	0.22	0.40	0.53	0.48	0.17	0.09	0.17	0.40						
145	0.48	0.19	0.14	0.03	0.18	0.31	0.43	0.41	0.12	0.08	0.09	0.32						
150	0.40	0.17	0.12	0.03	0.12	0.22	0.32	0.32	0.08	0.06	0.07	0.25						
155	0.32	0.10	0.08	0.03	0.10	0.17	0.26	0.24	0.08	0.05	0.07	0.19						
160	0.20	0.06	0.08	0.03	0.08	0.10	0.17	0.19	0.06	0.04	0.05	0.16						
165	0.16	0.06	0.08	0.03	0.06	0.06	0.08	0.12	0.06	0.06	0.03	0.12						
170	0.08	0.06	0.06	0.03	0.06	0.06	0.06	0.08	0.06	0.05	0.03	0.08						
175	0.06	0.06	0.06	0.03	0.06	0.06	0.06	0.07	0.06	0.05	0.03	0.06						
180	0.06	0.05	0.03	0.03	0.05	0.06	0.06	0.05	0.06	0.03	0.04	0.05						

C Range: 0 - 360DEG  
C Interval: 30.0DEG  
Test Speed: HIGH  
Temperature:25.3DEG  
Operators:WFW  
Test Date:2023-03-04

γ Range: 0 - 180DEG  
γ Interval: 1.0DEG  
Test System:EVERFINE GO-2000B\_V1 SYSTEM V2.0.269  
Humidity:65.0%  
Test Distance:10.800m [K=1.0000]  
Remarks:

Photometric Data Table [cd]

G/C	0.0	30.0	60.0	90.0	120.0	150.0	180.0	210.0	240.0	270.0
0.0	4.841	4.862	4.827	4.841	4.827	4.834	4.841	4.862	4.827	4.841
3.0	4.855	4.862	4.834	4.820	4.827	4.834	4.827	4.862	4.820	4.834
6.0	4.855	4.827	4.855	4.813	4.827	4.785	4.827	4.862	4.820	4.834
9.0	4.855	4.820	4.848	4.744	4.814	4.730	4.813	4.855	4.765	4.827
12.0	4.855	4.813	4.827	4.703	4.758	4.703	4.751	4.807	4.709	4.786
15.0	4.848	4.744	4.772	4.640	4.696	4.640	4.703	4.758	4.647	4.717
18.0	4.800	4.696	4.710	4.577	4.613	4.598	4.640	4.703	4.584	4.641
21.0	4.737	4.633	4.620	4.481	4.537	4.488	4.585	4.620	4.481	4.530
24.0	4.675	4.578	4.530	4.363	4.433	4.405	4.495	4.530	4.377	4.426
27.0	4.585	4.481	4.419	4.252	4.308	4.314	4.418	4.433	4.266	4.294
30.0	4.509	4.391	4.295	4.127	4.177	4.197	4.315	4.329	4.141	4.149
33.0	4.419	4.301	4.163	3.947	4.038	4.086	4.238	4.211	3.982	4.010
36.0	4.308	4.176	4.031	3.788	3.886	3.954	4.113	4.073	3.829	3.837
39.0	4.211	4.024	3.872	3.608	3.720	3.816	3.989	3.941	3.684	3.651
42.0	4.121	3.906	3.706	3.435	3.547	3.712	3.878	3.810	3.497	3.463
45.0	4.045	3.760	3.533	3.234	3.360	3.553	3.774	3.671	3.310	3.270
48.0	3.955	3.656	3.353	3.040	3.173	3.435	3.691	3.546	3.150	3.062
51.0	3.844	3.532	3.166	2.818	2.972	3.303	3.587	3.415	2.936	2.840
54.0	3.747	3.421	2.986	2.604	2.778	3.158	3.483	3.283	2.728	2.626
57.0	3.630	3.289	2.792	2.375	2.584	3.026	3.352	3.152	2.534	2.404
60.0	3.519	3.158	2.605	2.153	2.390	2.888	3.234	3.013	2.354	2.182
63.0	3.401	3.040	2.445	1.938	2.203	2.763	3.123	2.875	2.160	1.954
66.0	3.283	2.881	2.272	1.703	2.030	2.625	3.019	2.750	1.987	1.711
69.0	3.166	2.749	2.120	1.454	1.850	2.507	2.922	2.625	1.814	1.469
72.0	3.048	2.618	1.940	1.205	1.684	2.396	2.818	2.507	1.641	1.240
75.0	2.930	2.500	1.787	0.9621	1.531	2.258	2.694	2.376	1.482	0.9912
78.0	2.806	2.368	1.635	0.7266	1.379	2.147	2.562	2.258	1.357	0.7901
81.0	2.681	2.264	1.503	0.4981	1.247	2.057	2.451	2.161	1.212	0.5753
84.0	2.549	2.133	1.386	0.2975	1.123	1.952	2.320	2.037	1.094	0.4229
87.0	2.411	2.001	1.261	0.1589	1.012	1.807	2.195	1.905	0.9762	0.2843
90.0	2.265	1.870	1.157	0.0831	0.9007	1.662	2.070	1.780	0.8724	0.2217
93.0	2.134	1.731	1.060	0.0831	0.8038	1.537	1.946	1.663	0.7961	0.2008
96.0	1.995	1.599	0.9769	0.0831	0.7344	1.426	1.814	1.545	0.7201	0.1871
99.0	1.857	1.482	0.8248	0.0831	0.6652	1.309	1.703	1.434	0.6438	0.1731
102.0	1.704	1.371	0.7206	0.0831	0.6165	1.212	1.572	1.330	0.5956	0.1524
105.0	1.580	1.191	0.5683	0.0831	0.5818	1.122	1.474	1.233	0.5471	0.1592
108.0	1.462	1.018	0.5610	0.0831	0.5336	1.039	1.343	1.136	0.5264	0.1385
111.0	1.309	0.9207	0.4712	0.0831	0.5057	0.9625	1.246	1.060	0.5193	0.1385
114.0	1.199	0.7480	0.4088	0.0831	0.4712	0.8863	1.156	0.9907	0.4569	0.1385
117.0	1.115	0.7272	0.3948	0.0831	0.4433	0.8242	1.066	0.9351	0.4086	0.1385
120.0	1.039	0.7134	0.3463	0.0831	0.4156	0.7617	0.9763	0.8590	0.3877	0.1385
123.0	0.9218	0.6440	0.3257	0.0831	0.3810	0.7202	0.9278	0.8036	0.3598	0.1385
126.0	0.8381	0.6165	0.2495	0.0693	0.3464	0.6371	0.8516	0.7412	0.3183	0.1316
129.0	0.7966	0.5539	0.2078	0.0761	0.3186	0.6094	0.7616	0.6927	0.2839	0.1247
132.0	0.7207	0.4986	0.1662	0.0623	0.2841	0.5263	0.7062	0.6304	0.2631	0.1177
135.0	0.6513	0.4223	0.1731	0.0416	0.2495	0.4987	0.6301	0.5818	0.2216	0.1039
138.0	0.6027	0.3597	0.1731	0.0277	0.2148	0.4224	0.5951	0.5196	0.1869	0.1039
141.0	0.5472	0.2907	0.1524	0.0277	0.2079	0.3946	0.5123	0.4779	0.1661	0.0900
144.0	0.4850	0.1870	0.1386	0.0278	0.1871	0.3254	0.4568	0.4295	0.1452	0.0763
147.0	0.4503	0.1869	0.1316	0.0346	0.1525	0.2770	0.3809	0.3671	0.1037	0.0761
150.0	0.4018	0.1663	0.1178	0.0346	0.1248	0.2216	0.3183	0.3187	0.0762	0.0555
153.0	0.3534	0.1176	0.0902	0.0346	0.1178	0.1869	0.2770	0.2772	0.0762	0.0485
156.0	0.2707	0.0900	0.0762	0.0346	0.0970	0.1662	0.2214	0.2286	0.0762	0.0485
159.0	0.2218	0.0623	0.0762	0.0346	0.0762	0.1313	0.1799	0.2010	0.0623	0.0416
162.0	0.1871	0.0554	0.0762	0.0346	0.0762	0.0623	0.1591	0.1664	0.0554	0.0416
165.0	0.1595	0.0554	0.0830	0.0346	0.0555	0.0623	0.0829	0.1177	0.0554	0.0553
168.0	0.1248	0.0555	0.0761	0.0346	0.0554	0.0554	0.0554	0.0902	0.0554	0.0485
171.0	0.0693	0.0623	0.0554	0.0346	0.0554	0.0554	0.0554	0.0831	0.0554	0.0485
174.0	0.0623	0.0554	0.0554	0.0346	0.0554	0.0554	0.0554	0.0555	0.0554	0.0485
177.0	0.0623	0.0554	0.0554	0.0346	0.0554	0.0554	0.0554	0.0555	0.0554	0.0346
180.0	0.0623	0.0485	0.0346	0.0346	0.0485	0.0554	0.0554	0.0485	0.0554	0.0346
G/C	300.0	330.0								
0.0	4.827	4.834								
3.0	4.827	4.834								
6.0	4.827	4.841								
9.0	4.792	4.841								
12.0	4.744	4.841								
15.0	4.689	4.814								
18.0	4.619	4.765								
21.0	4.543	4.703								
24.0	4.460	4.640								
27.0	4.376	4.551								
30.0	4.238	4.461								

C Range: 0 - 360DEG  
C Interval: 30.0DEG  
Test Speed: HIGH  
Temperature: 25.3DEG  
Operators: WFW  
Test Date: 2023-03-04

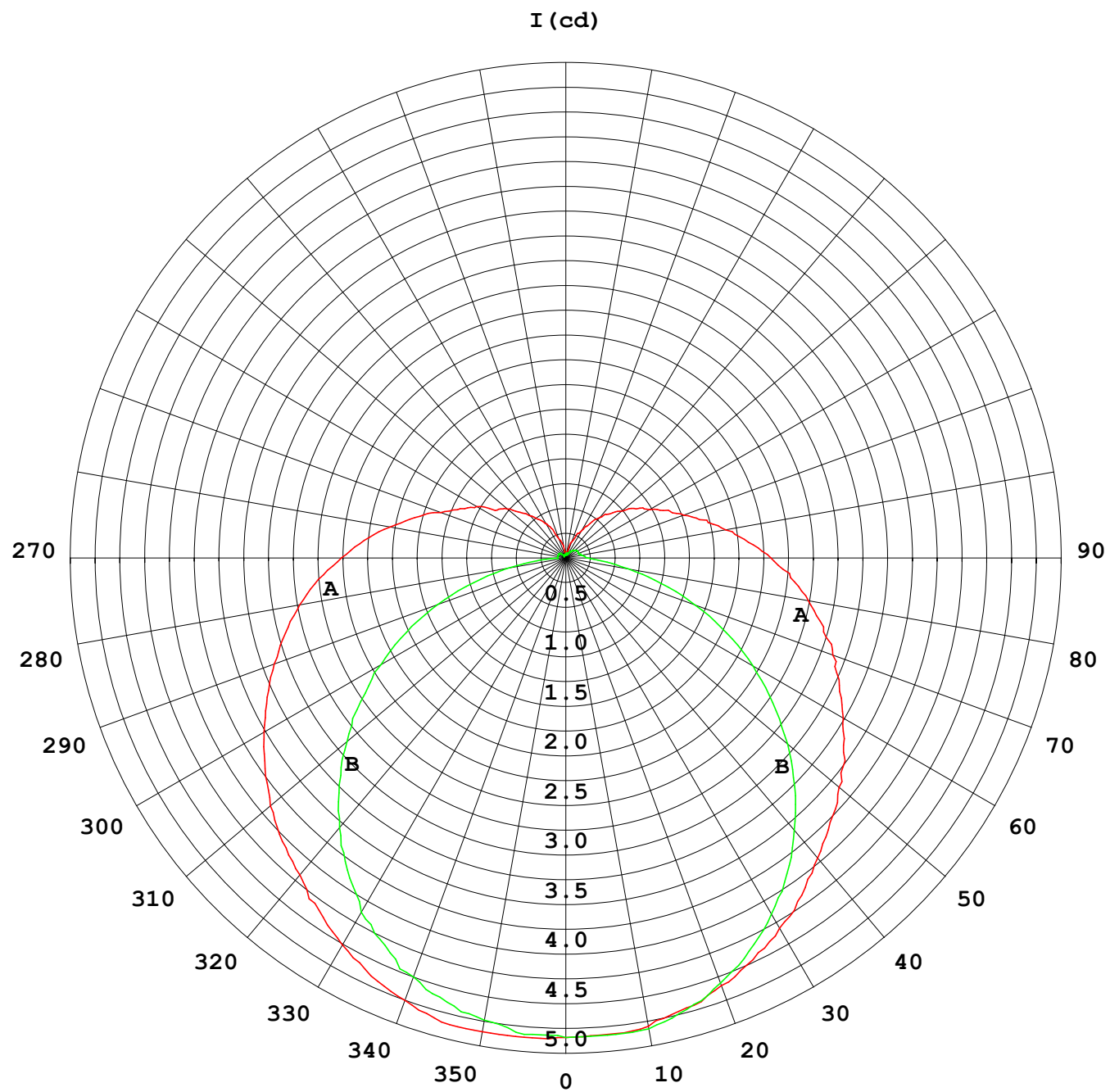
γ Range: 0 - 180DEG  
γ Interval: 1.0DEG  
Test System: EVERFINE GO-2000B\_V1 SYSTEM V2.0.269  
Humidity: 65.0%  
Test Distance: 10.800m [K=1.0000]  
Remarks:

## Photometric Data Table [cd]

33.0	4.106	4.350
36.0	3.975	4.232
39.0	3.850	4.108
42.0	3.705	3.976
45.0	3.538	3.844
48.0	3.379	3.713
51.0	3.213	3.609
54.0	3.040	3.484
57.0	2.860	3.359
60.0	2.700	3.214
63.0	2.513	3.089
66.0	2.354	2.965
69.0	2.188	2.833
72.0	2.056	2.701
75.0	1.897	2.577
78.0	1.738	2.452
81.0	1.607	2.334
84.0	1.489	2.203
87.0	1.378	2.092
90.0	1.267	1.960
93.0	1.170	1.815
96.0	1.080	1.697
99.0	0.9418	1.566
102.0	0.8379	1.448
105.0	0.7685	1.323
108.0	0.7203	1.185
111.0	0.6786	1.081
114.0	0.6231	0.9975
117.0	0.5330	0.9006
120.0	0.4918	0.8313
123.0	0.4152	0.7758
126.0	0.3461	0.7204
129.0	0.2907	0.6582
132.0	0.2701	0.6095
135.0	0.2146	0.5336
138.0	0.1662	0.4711
141.0	0.1659	0.3948
144.0	0.1106	0.3326
147.0	0.0761	0.2703
150.0	0.0693	0.2493
153.0	0.0693	0.2218
156.0	0.0693	0.1939
159.0	0.0485	0.1663
162.0	0.0484	0.1386
165.0	0.0346	0.1178
168.0	0.0346	0.0901
171.0	0.0346	0.0762
174.0	0.0346	0.0693
177.0	0.0346	0.0555
180.0	0.0416	0.0485

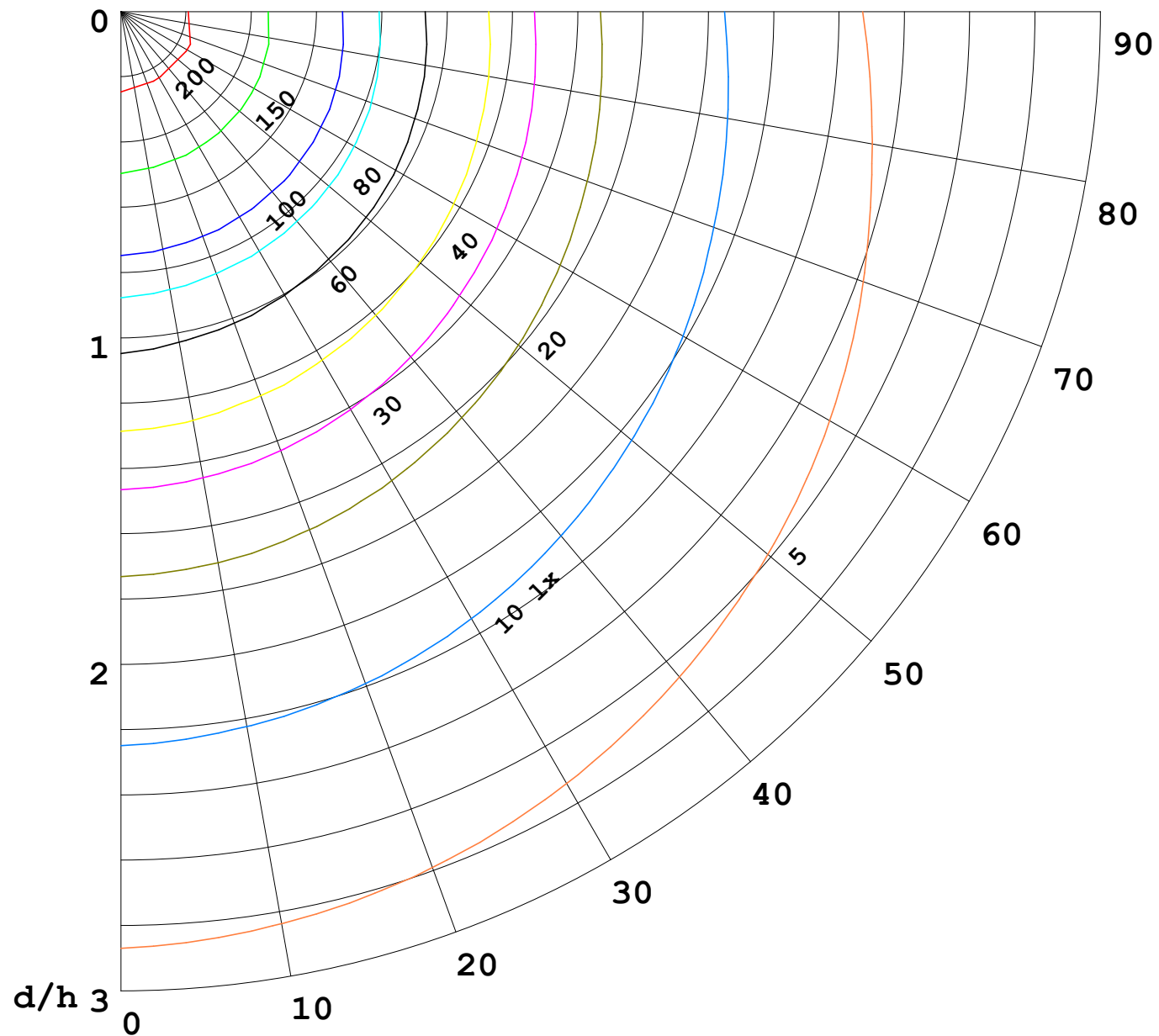
C Range: 0 - 360DEG  
C Interval: 30.0DEG  
Test Speed: HIGH  
Temperature:25.3DEG  
Operators:WFW  
Test Date:2023-03-04

γ Range: 0 - 180DEG  
γ Interval: 1.0DEG  
Test System:EVERFINE GO-2000B\_V1 SYSTEM V2.0.269  
Humidity:65.0%  
Test Distance:10.800m [K=1.0000]  
Remarks:



1000 lm

$\kappa = 1$



F = 5000 lm  
 K = 0.7  
 Hcc = 0.0 m  
 Hfc = 0.0 m  
 Eave = 100 lx

	Pcc	Pw	Pfc
—	70	50	30
—	50	30	20

