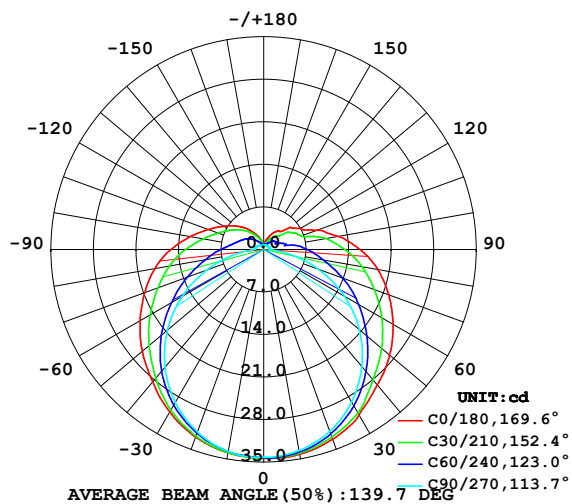


## LUMINAIRE PHOTOMETRIC TEST REPORT

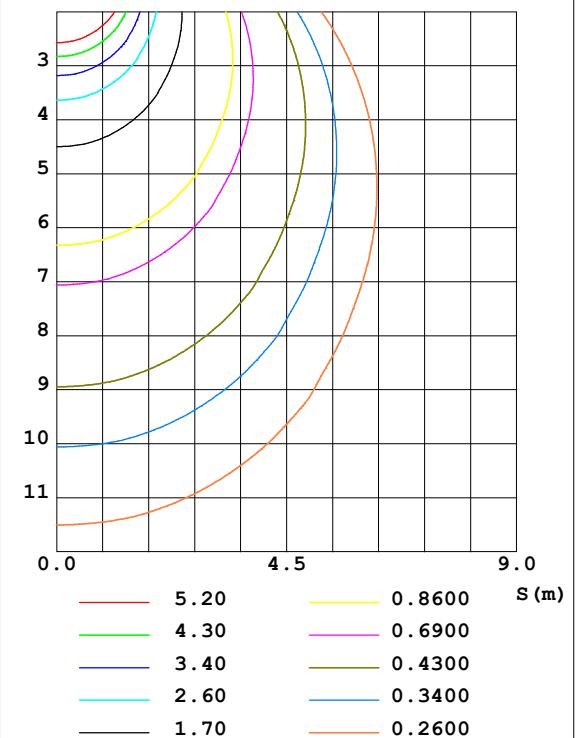
Test:U:24.00V I:0.2386A P:5.726W PF:1.000 Lamp Flux:157.707x1 lm		
NAME: SF21-24V-5050-70-SPI4-RGBW-3000K-W	TYPE: 硅胶	WEIGHT:
DIM.: 28MM*11.5MM	SPEC.:	SERIAL No.:202303003
MFR.: OLYMPIA	SUR.:1.0*0.0115	PROTECTION ANGLE:

DATA OF LAMP		PHOTOMETRIC DATA Eff: 27.54 lm/W			
MODEL	5050	I <sub>max</sub> (cd)	34.41	S/MH (C0/180)	1.36
NOMINAL POWER (W)	18	LOR (%)	100.0	S/MH (C90/270)	1.26
RATED VOLTAGE (V)	24	TOTAL FLUX (lm)	157.71	η UP, DN (C0-180)	9.1, 40.8
NOMINAL FLUX (lm)	157.707	CIE CLASS	SEMI-D.	η UP, DN (C180-360)	9.4, 40.7
LAMPS INSIDE	1	η up (%)	18.5	CIBSE SHR NOM	1.50
TEST VOLTAGE (V)	24.0	η down (%)	81.5	CIBSE SHR MAX	1.50

LUMINOUS INTENSITY DISTRIBUTION DIAGRAM



C0 PLANE ISOLUX DIAGRAM (UNIT:lx)



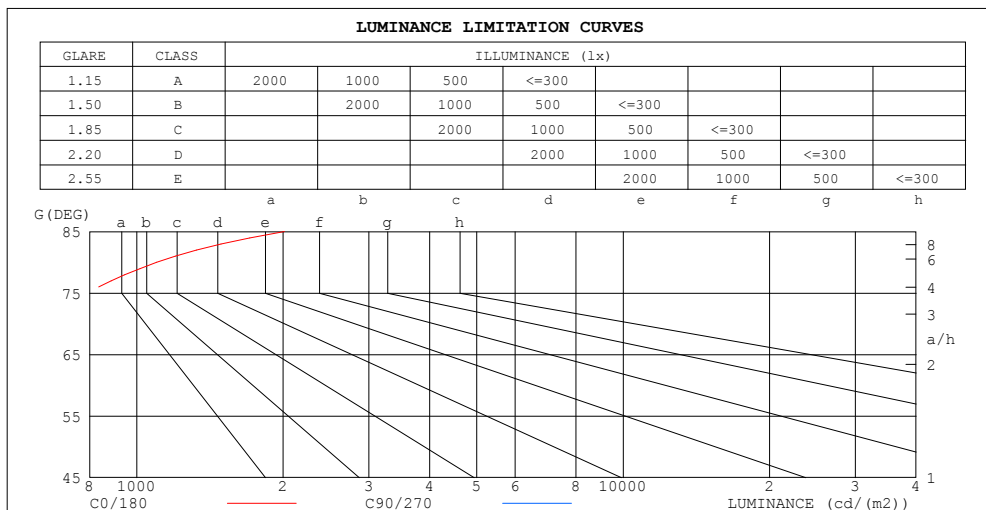
C Range: 0 - 360DEG  
C Interval: 30.0DEG  
Test Speed: HIGH  
Temperature: 25.3DEG  
Operators: WFW  
Test Date: 2023-03-04

γ Range: 0 - 180DEG  
γ Interval: 1.0DEG  
Test System: EVERFINE GO-2000B\_V1 SYSTEM V2.0.269  
Humidity: 65.0%  
Test Distance: 10.800m [K=1.0000]  
Remarks:

### ZONAL FLUX DIAGRAM AND LUMINANCE LIMITATION CURVES

#### ZONAL FLUX DIAGRAM:

$\gamma$	C0	C45	C90	C135	C180	C225	C270	C315	$\gamma$	$\Phi$ zone	$\Phi$ total	%lum, lamp
10	34.23	33.96	33.59	33.62	33.98	33.84	33.76	33.88	0- 10	3.252	3.252	2.06,2.06
20	33.22	32.57	31.82	32.17	32.83	32.43	31.96	32.51	10- 20	9.395	12.65	8.02,8.02
30	31.39	30.37	28.95	29.83	30.92	30.07	29.08	30.15	20- 30	14.47	27.12	17.2,17.2
40	29.11	27.12	25.14	26.65	28.42	26.89	25.26	27.04	30- 40	17.91	45.03	28.6,28.6
50	27.06	23.75	20.57	23.02	26.09	23.31	20.69	23.64	40- 50	19.50	64.53	40.9,40.9
60	24.59	20.23	15.33	19.26	23.47	19.54	15.47	20.00	50- 60	19.37	83.90	53.2,53.2
70	21.92	16.64	9.574	15.65	20.85	15.94	9.998	16.58	60- 70	17.71	101.6	64.4,64.4
80	19.07	13.19	4.068	12.49	18.21	12.74	4.727	13.25	70- 80	14.99	116.6	73.9,73.9
90	15.86	10.25	0.9765	9.738	15.28	9.970	1.594	10.36	80- 90	11.92	128.5	81.5,81.5
100	12.46	7.206	0.9627	7.552	12.30	7.692	1.441	7.688	90-100	9.185	137.7	87.3,87.3
110	9.238	4.786	0.9627	6.067	9.687	6.105	1.364	5.552	100-110	6.739	144.5	91.6,91.6
120	7.003	3.982	0.9419	4.914	7.679	4.921	1.171	4.229	110-120	4.876	149.3	94.7,94.7
130	5.667	2.929	0.8381	3.858	6.030	3.861	0.9907	3.300	120-130	3.548	152.9	96.9,96.9
140	3.989	2.227	0.7688	2.940	4.549	2.885	0.8519	2.394	130-140	2.322	155.2	98.4,98.4
150	3.132	1.551	0.7688	2.109	3.129	2.012	0.7203	1.624	140-150	1.396	156.6	99.3,99.3
160	1.989	1.101	0.7757	1.423	2.035	1.372	0.6787	1.133	150-160	0.7291	157.3	99.8,99.8
170	0.9423	0.8450	0.7757	0.9002	0.8586	0.8936	0.7272	0.8415	160-170	0.3067	157.6	100,100
180	0.7965	0.7861	0.7757	0.7792	0.8103	0.7999	0.7341	0.7618	170-180	0.0778	157.7	100,100
DEG	LUMINOUS INTENSITY:cd									UNIT:lm		



LUMINANCE cd/(m2)		
G (DEG)	C0/180	C90/270
85	2011	218
80	1098	234
75	792	261
70	641	280
65	551	296
60	492	307
55	451	314
50	421	320
45	398	324

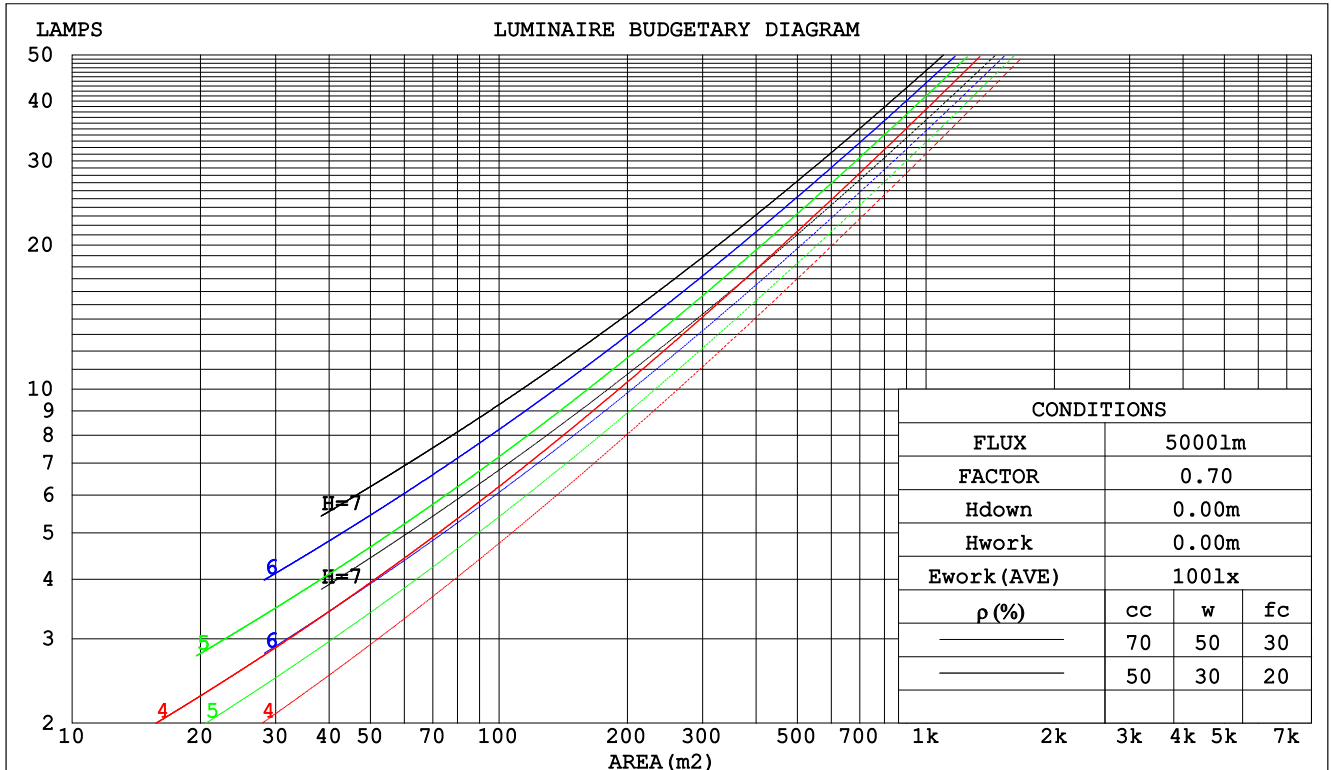
C Range: 0 - 360DEG  
C Interval: 30.0DEG  
Test Speed: HIGH  
Temperature:25.3DEG  
Operators:WFW  
Test Date:2023-03-04

$\gamma$  Range: 0 - 180DEG  
 $\gamma$  Interval: 1.0DEG  
Test System:EVERFINE GO-2000B\_V1 SYSTEM V2.0.269  
Humidity:65.0%  
Test Distance:10.800m [K=1.0000]  
Remarks:

## CU AND LUMINAIRE BUDGETARY ESTIMATE DIAGRAM

Test:U:24.00V I:0.2386A P:5.726W PF:1.000 Lamp Flux:157.707x1 lm		
NAME: SF21-24V-5050-70-SPI4-RGBW-3000K-W	TYPE: 硅胶	WEIGHT:
DIM.: 28MM*11.5MM	SPEC.:	SERIAL No.:202303003
MFR.: OLYMPIA	SUR.:1.0*0.0115	PROTECTION ANGLE:

pcc	80%			70%			50%			30%			10%			0
pw	50%	30%	10%	50%	30%	10%	50%	30%	10%	50%	30%	10%	50%	30%	10%	0
pfc	20%			20%			20%			20%			20%			0
RCR	RCR:Room Cavity Ratio						Coefficients of Utilization(CU)									
0.0	1.15	1.15	1.15	1.10	1.10	1.10	1.01	1.01	1.01	.93	.93	.93	.85	.85	.85	.81
1.0	.95	.90	.85	.91	.87	.82	.84	.80	.76	.76	.73	.70	.70	.67	.65	.62
2.0	.82	.74	.67	.78	.71	.65	.71	.66	.61	.65	.61	.56	.60	.56	.52	.49
3.0	.71	.62	.55	.68	.60	.53	.62	.55	.50	.57	.51	.46	.52	.47	.43	.40
4.0	.62	.53	.46	.60	.51	.44	.55	.47	.42	.50	.44	.39	.46	.41	.37	.34
5.0	.55	.46	.39	.53	.44	.38	.49	.41	.35	.45	.38	.33	.41	.36	.31	.29
6.0	.49	.40	.33	.47	.39	.32	.44	.36	.31	.40	.34	.29	.37	.32	.27	.25
7.0	.45	.36	.29	.43	.34	.28	.40	.32	.27	.37	.30	.25	.34	.28	.24	.22
8.0	.41	.32	.26	.39	.31	.25	.36	.29	.24	.33	.27	.23	.31	.25	.21	.19
9.0	.37	.29	.23	.36	.28	.22	.33	.26	.21	.31	.25	.20	.29	.23	.19	.17
10.0	.34	.26	.21	.33	.25	.20	.31	.24	.19	.28	.23	.18	.26	.21	.17	.16



C Range: 0 - 360DEG  
C Interval: 30.0DEG  
Test Speed: HIGH  
Temperature:25.3DEG  
Operators:WFW  
Test Date:2023-03-04

γ Range: 0 - 180DEG  
γ Interval: 1.0DEG  
Test System:EVERFINE GO-2000B\_V1 SYSTEM V2.0.269  
Humidity:65.0%  
Test Distance:10.800m [K=1.0000]  
Remarks:

## WEC AND CCEC

Test:U:24.00V I:0.2386A P:5.726W PF:1.000 Lamp Flux:157.707x1 lm					
NAME: SF21-24V-5050-70-SPI4-RGBW-3000K-W			TYPE: 硅胶		WEIGHT:
DIM.: 28MM*11.5MM			SPEC.:		SERIAL No.:202303003
MFR.: OLYMPIA			SUR.:1.0*0.0115		PROTECTION ANGLE:

pcc	80%			70%			50%			30%			10%			0	
pw	50%	30%	10%	50%	30%	10%	50%	30%	10%	50%	30%	10%	50%	30%	10%	0	
pfc	20%			20%			20%			20%			20%			0	
RCR	RCR:Room Cavity Ratio						Wall Exitance Coefficients(WEC)										
0.0																	
1.0	.386	.219	.069	.373	.213	.068	.349	.200	.064	.327	.188	.060	.306	.177	.057		
2.0	.333	.183	.056	.322	.177	.055	.300	.167	.052	.280	.157	.049	.261	.148	.047		
3.0	.296	.158	.047	.286	.153	.046	.266	.144	.044	.248	.136	.042	.231	.128	.040		
4.0	.266	.138	.041	.257	.134	.040	.239	.127	.038	.222	.119	.036	.207	.112	.034		
5.0	.242	.123	.036	.233	.120	.035	.217	.113	.033	.202	.107	.032	.188	.100	.030		
6.0	.222	.111	.032	.214	.108	.031	.199	.102	.030	.185	.096	.028	.172	.091	.027		
7.0	.204	.101	.029	.197	.098	.028	.184	.093	.027	.171	.088	.026	.159	.083	.024		
8.0	.190	.093	.026	.183	.090	.025	.171	.085	.024	.159	.081	.023	.148	.076	.022		
9.0	.177	.085	.024	.171	.083	.023	.159	.079	.022	.148	.074	.021	.138	.070	.020		
10.0	.165	.079	.022	.160	.077	.022	.149	.073	.021	.139	.069	.020	.130	.065	.019		

pcc	80%			70%			50%			30%			10%			0
pw	50%	30%	10%	50%	30%	10%	50%	30%	10%	50%	30%	10%	50%	30%	10%	0
pfc	20%			20%			20%			20%			20%			0
RCR	RCR:Room Cavity Ratio			Ceiling Cavity Exitance Coefficients(CCEC)												
0.0	.331	.331	.331	.283	.283	.283	.193	.193	.193	.111	.111	.111	.036	.036	.036	
1.0	.328	.298	.270	.280	.255	.233	.192	.176	.161	.110	.102	.094	.035	.033	.030	
2.0	.321	.275	.236	.275	.237	.204	.188	.164	.142	.109	.095	.083	.035	.031	.027	
3.0	.313	.258	.214	.269	.223	.186	.184	.155	.130	.107	.090	.077	.034	.029	.025	
4.0	.306	.246	.200	.262	.212	.174	.180	.148	.122	.104	.087	.072	.034	.028	.024	
5.0	.298	.236	.190	.256	.204	.166	.176	.143	.117	.102	.084	.069	.033	.027	.023	
6.0	.290	.228	.183	.250	.198	.160	.172	.138	.113	.100	.081	.067	.032	.027	.022	
7.0	.283	.222	.178	.244	.192	.155	.168	.135	.110	.098	.079	.066	.032	.026	.022	
8.0	.277	.216	.174	.238	.187	.152	.165	.132	.108	.096	.078	.064	.031	.025	.021	
9.0	.270	.211	.171	.233	.183	.149	.161	.129	.106	.094	.076	.063	.030	.025	.021	
10.0	.265	.207	.169	.228	.180	.147	.158	.126	.105	.092	.075	.062	.030	.025	.021	

C Range: 0 - 360DEG  
 C Interval: 30.0DEG  
 Test Speed: HIGH  
 Temperature:25.3DEG  
 Operators:WFW  
 Test Date:2023-03-04

γ Range: 0 - 180DEG  
 γ Interval: 1.0DEG  
 Test System:EVERFINE GO-2000B\_V1 SYSTEM V2.0.269  
 Humidity:65.0%  
 Test Distance:10.800m [K=1.0000]  
 Remarks:

## Uncorrected UGR Table

Test:U:24.00V I:0.2386A P:5.726W PF:1.000 Lamp Flux:157.707x1 lm										
NAME: SF21-24V-5050-70-SPI4-RGBW-3000K-W					TYPE:硅胶			WEIGHT:		
DIM.: 28MM*11.5MM					SPEC.:			SERIAL No.:202303003		
MFR.: OLYMPIA					SUR.:1.0*0.0115			PROTECTION ANGLE:		
ceiling/cavity	0.7	0.7	0.5	0.5	0.3	0.7	0.7	0.5	0.5	0.3
walls	0.5	0.3	0.5	0.3	0.3	0.5	0.3	0.5	0.3	0.3
working plane	0.2	0.2	0.2	0.2	0.2	0.2	0.2	0.2	0.2	0.2
Room dimensions										
Viewed crosswise										
Viewed endwise										
x = 2H y = 2H										
3H										
4H										
6H										
8H										
12H										
4H 2H										
3H										
4H										
6H										
8H										
12H										
8H 4H										
6H										
8H										
12H										
12H 4H										
6H										
8H										
Variations with the observer position at spacings:										
S = 1.0H										
1.5H										
2.0H										

CIE Pub.117 Corrected 157.7 lm Total Lamp Luminous Flux. (8log(F/F0) = -6.4)

C Range: 0 - 360DEG  
 C Interval: 30.0DEG  
 Test Speed: HIGH  
 Temperature:25.3DEG  
 Operators:WFW  
 Test Date:2023-03-04

γ Range: 0 - 180DEG  
 γ Interval: 1.0DEG  
 Test System:EVERFINE GO-2000B\_V1 SYSTEM V2.0.269  
 Humidity:65.0%  
 Test Distance:10.800m [K=1.0000]  
 Remarks:

## UTILIZATION FACTORS TABLE

Test:U:24.00V I:0.2386A P:5.726W PF:1.000 Lamp Flux:157.707x1 lm		
NAME: SF21-24V-5050-70-SPI4-RGBW-3000K-W	TYPE: 硅胶	WEIGHT:
DIM.: 28MM*11.5MM	SPEC.:	SERIAL No.:202303003
MFR.: OLYMPIA	SUR.:1.0*0.0115	PROTECTION ANGLE:

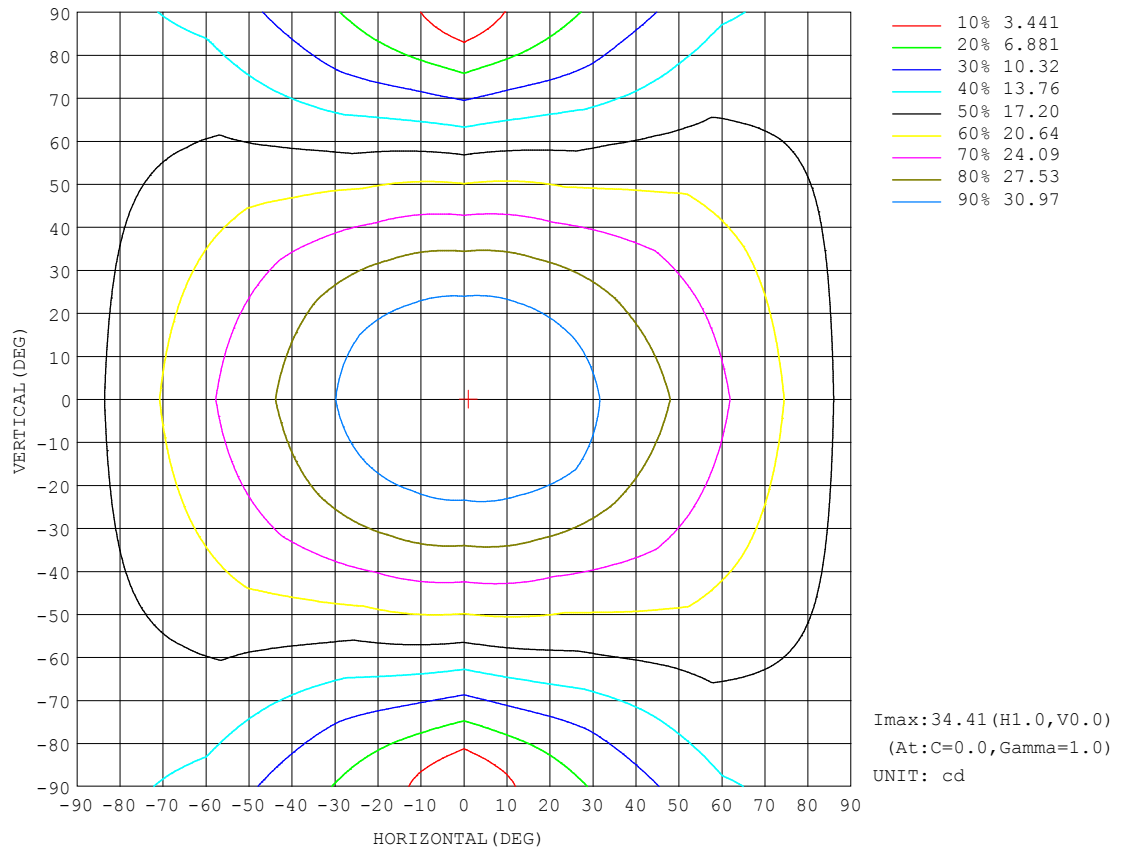
REFLECTANCE										
Ceiling	0.8	0.8	0.8	0.7	0.7	0.7	0.5	0.5	0.5	0
Walls	0.7	0.5	0.3	0.7	0.5	0.3	0.7	0.5	0.3	0
Working plane	0.2	0.2	0.2	0.2	0.2	0.2	0.2	0.2	0.2	0
ROOM INDEX	UTILIZATION FACTORS (PERCENT) $k(RI) \times RCR = 5$									
$k = 0.60$	48	35	28	47	35	28	45	34	27	21
0.80	57	44	36	55	43	35	52	42	35	27
1.00	65	52	43	63	51	43	59	51	41	33
1.25	71	59	50	69	57	49	65	55	48	38
1.50	76	64	56	74	63	55	69	59	53	42
2.00	84	73	64	81	71	63	75	67	60	48
2.50	88	78	70	85	76	68	79	71	65	52
3.00	92	83	75	88	80	73	82	75	69	56
4.00	97	89	82	93	86	80	86	80	75	60
5.00	100	93	87	96	89	84	88	83	79	63
ROOM INDEX	UF (total)									Direct
According to DIN EN 13032-2 2004			Suspended					SHRNM = 1.25		

C Range: 0 - 360DEG  
 C Interval: 30.0DEG  
 Test Speed: HIGH  
 Temperature: 25.3DEG  
 Operators: WFW  
 Test Date: 2023-03-04

$\gamma$  Range: 0 - 180DEG  
 $\gamma$  Interval: 1.0DEG  
 Test System: EVERFINE GO-2000B\_V1 SYSTEM V2.0.269  
 Humidity: 65.0%  
 Test Distance: 10.800m [K=1.0000]  
 Remarks:

## ISOCANDELA DIAGRAM

Test:U:24.00V I:0.2386A P:5.726W PF:1.000 Lamp Flux:157.707x1 lm		
NAME: SF21-24V-5050-70-SPI4-RGBW-3000K-W	TYPE: 硅胶	WEIGHT:
DIM.: 28MM*11.5MM	SPEC.:	SERIAL No.:202303003
MFR.: OLYMPIA	SUR.:1.0*0.0115	PROTECTION ANGLE:

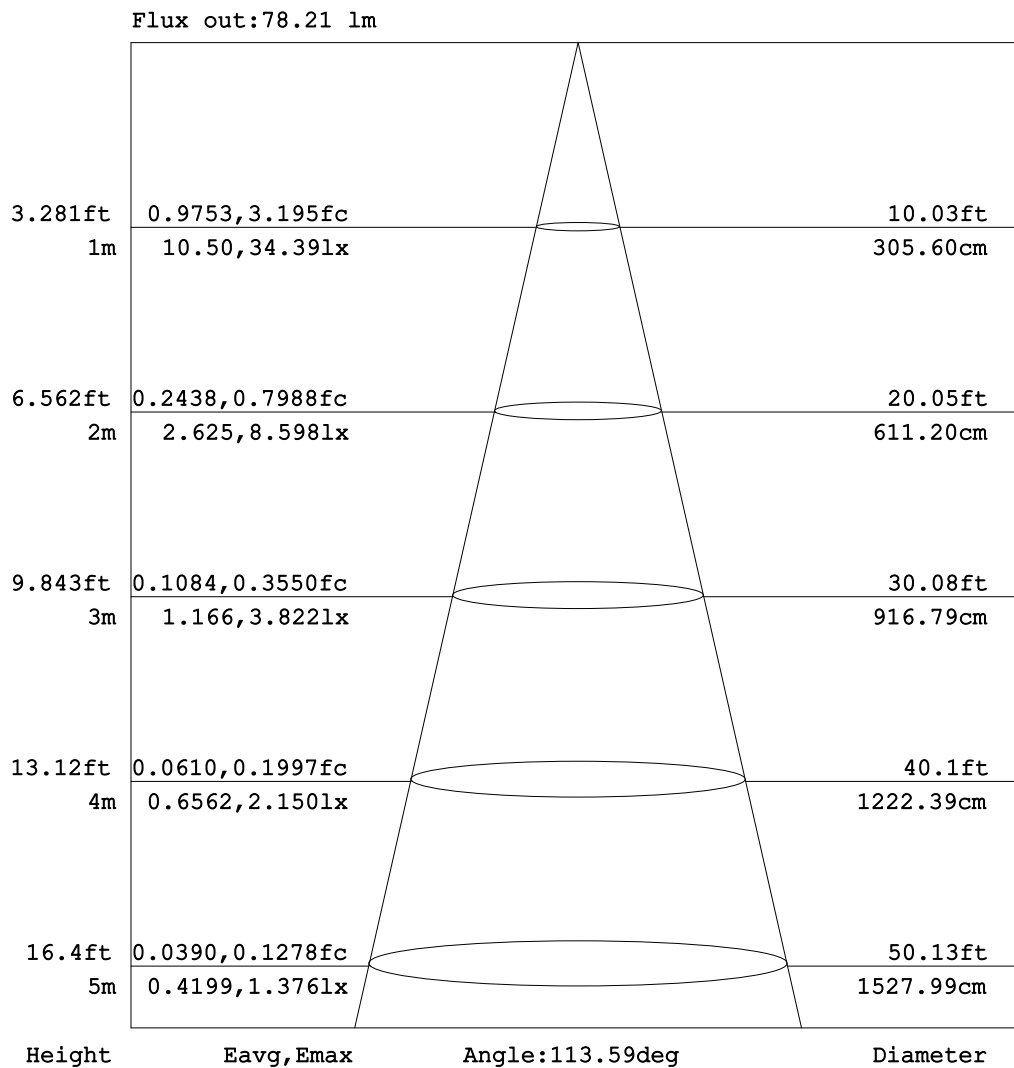


C Range: 0 - 360DEG  
C Interval: 30.0DEG  
Test Speed: HIGH  
Temperature:25.3DEG  
Operators:WFW  
Test Date:2023-03-04

$\gamma$  Range: 0 - 180DEG  
 $\gamma$  Interval: 1.0DEG  
Test System:EVERFINE GO-2000B\_V1 SYSTEM V2.0.269  
Humidity:65.0%  
Test Distance:10.800m [K=1.0000]  
Remarks:

## AAI Figure

Test:U:24.00V I:0.2386A P:5.726W PF:1.000 Lamp Flux:157.707x1 lm		
NAME: SF21-24V-5050-70-SPI4-RGBW-3000K-W	TYPE: 硅胶	WEIGHT:
DIM.: 28MM*11.5MM	SPEC.:	SERIAL No.:202303003
MFR.: OLYMPIA	SUR.:1.0*0.0115	PROTECTION ANGLE:



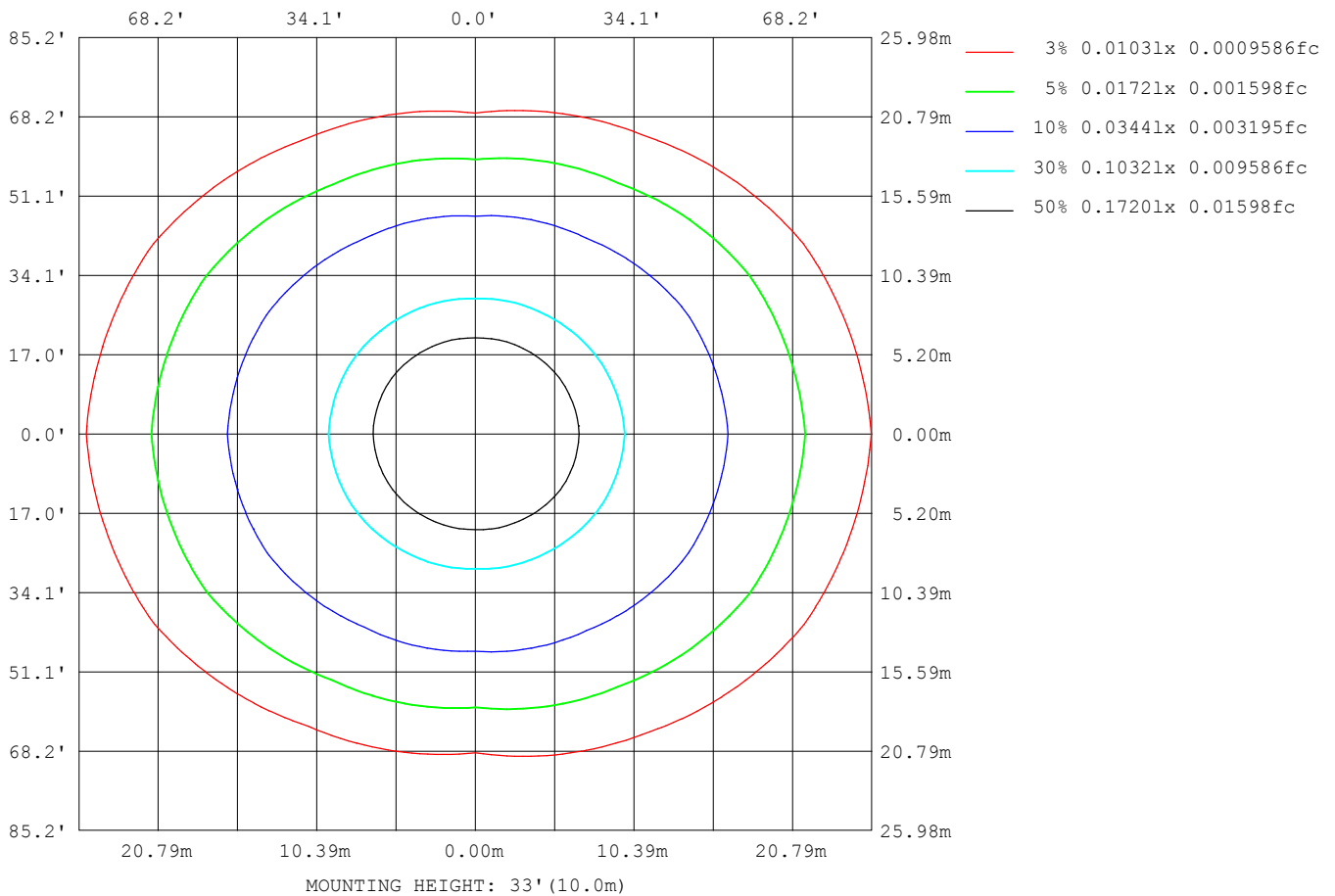
Note: The Curves indicate the illuminated area and the average illumination when the luminaire is at different distance.

C Range: 0 - 360DEG  
C Interval: 30.0DEG  
Test Speed: HIGH  
Temperature: 25.3DEG  
Operators: WFW  
Test Date: 2023-03-04

γ Range: 0 - 180DEG  
γ Interval: 1.0DEG  
Test System: EVERFINE GO-2000B\_V1 SYSTEM V2.0.269  
Humidity: 65.0%  
Test Distance: 10.800m [K=1.0000]  
Remarks:

## ISOLUX DIAGRAM

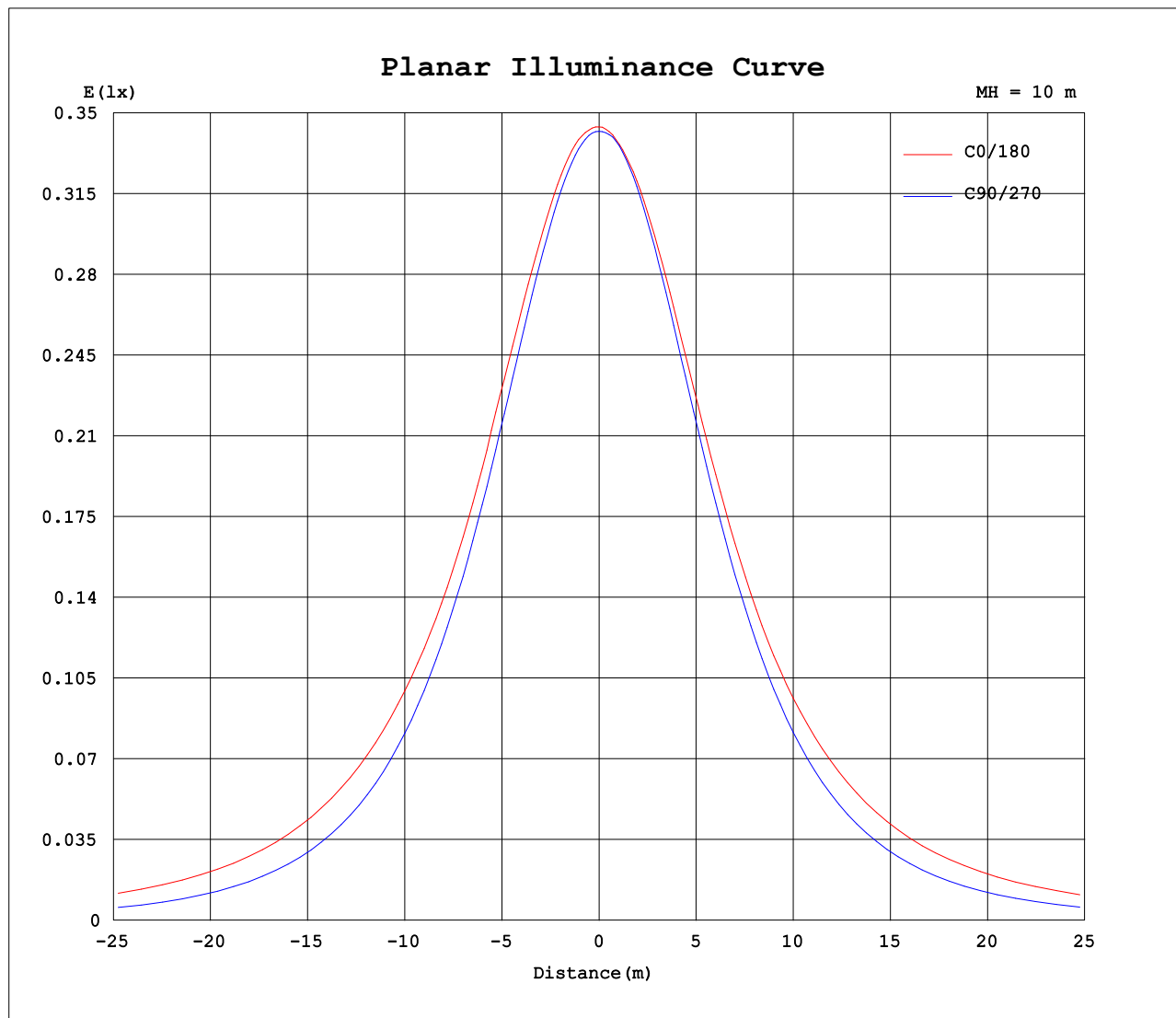
Test:U:24.00V I:0.2386A P:5.726W PF:1.000 Lamp Flux:157.707x1 lm		
NAME: SF21-24V-5050-70-SPI4-RGBW-3000K-W	TYPE: 硅胶	WEIGHT:
DIM.: 28MM*11.5MM	SPEC.:	SERIAL No.:202303003
MFR.: OLYMPIA	SUR.:1.0*0.0115	PROTECTION ANGLE:



C Range: 0 - 360DEG  
C Interval: 30.0DEG  
Test Speed: HIGH  
Temperature:25.3DEG  
Operators:WFW  
Test Date:2023-03-04

$\gamma$  Range: 0 - 180DEG  
 $\gamma$  Interval: 1.0DEG  
Test System:EVERFINE GO-2000B\_V1 SYSTEM V2.0.269  
Humidity:65.0%  
Test Distance:10.800m [K=1.0000]  
Remarks:

## Planar Illuminance Curve



C Range: 0 - 360DEG  
C Interval: 30.0DEG  
Test Speed: HIGH  
Temperature: 25.3DEG  
Operators: WFW  
Test Date: 2023-03-04

$\gamma$  Range: 0 - 180DEG  
 $\gamma$  Interval: 1.0DEG  
Test System: EVERFINE GO-2000B\_V1 SYSTEM V2.0.269  
Humidity: 65.0%  
Test Distance: 10.800m [K=1.0000]  
Remarks:

## LUMINOUS DISTRIBUTION INTENSITY DATA

Test:U:24.00V I:0.2386A P:5.726W PF:1.000 Lamp Flux:157.707x1 lm		
NAME: SF21-24V-5050-70-SPI4-RGBW-3000K-W	TYPE: 硅胶	WEIGHT:
DIM.: 28MM*11.5MM	SPEC.:	SERIAL No.:202303003
MFR.: OLYMPIA	SUR.:1.0*0.0115	PROTECTION ANGLE:

Table--1

UNIT: cd

C (DEG) γ (DEG)	0	30	60	90	120	150	180	210	240	270	300	330							
0	34.4	34.3	34.3	34.2	34.2	34.1	34.4	34.3	34.3	34.2	34.2	34.1							
5	34.4	34.3	34.2	34.0	34.1	34.0	34.2	34.2	34.1	34.2	34.1	34.2							
10	34.2	34.1	33.9	33.6	33.6	33.6	34.0	33.9	33.7	33.8	33.8	34.0							
15	33.8	33.6	33.2	32.8	32.9	33.1	33.5	33.4	33.1	33.0	33.2	33.5							
20	33.2	32.8	32.3	31.8	32.0	32.4	32.8	32.7	32.2	32.0	32.3	32.7							
25	32.5	32.0	31.1	30.5	30.8	31.4	32.0	31.7	31.0	30.6	31.1	31.8							
30	31.4	31.1	29.7	29.0	29.4	30.3	30.9	30.5	29.6	29.1	29.7	30.6							
35	30.2	29.5	28.0	27.1	27.7	28.9	29.7	29.2	28.0	27.3	28.0	29.3							
40	29.1	28.0	26.2	25.1	25.9	27.4	28.4	27.7	26.1	25.3	26.2	27.9							
45	28.1	26.7	24.2	22.9	23.8	25.9	27.3	26.1	24.1	23.1	24.2	26.5							
50	27.1	25.3	22.2	20.6	21.6	24.4	26.1	24.6	22.0	20.7	22.1	25.2							
55	25.9	23.9	20.1	18.0	19.4	22.9	24.8	23.1	19.8	18.2	19.9	23.8							
60	24.6	22.5	18.0	15.3	17.1	21.4	23.5	21.6	17.5	15.5	17.7	22.3							
65	23.3	20.9	16.0	12.5	14.9	19.9	22.2	20.0	15.4	12.7	15.8	20.8							
70	21.9	19.4	13.9	9.57	12.9	18.4	20.9	18.5	13.3	10.00	13.8	19.3							
75	20.5	17.9	11.8	6.75	11.0	17.0	19.5	17.1	11.4	7.27	11.8	17.8							
80	19.1	16.4	9.94	4.07	9.35	15.6	18.2	15.8	9.73	4.73	10.1	16.4							
85	17.5	14.9	8.48	1.90	7.96	14.2	16.8	14.3	8.34	2.64	8.77	14.9							
90	15.9	13.4	7.15	0.98	6.73	12.7	15.3	12.9	7.08	1.59	7.41	13.3							
95	14.2	11.8	6.06	0.96	5.76	11.3	13.8	11.4	6.02	1.52	6.25	11.8							
100	12.5	10.5	3.96	0.96	5.04	10.1	12.3	10.1	5.25	1.44	4.96	10.4							
105	10.7	8.51	3.65	0.96	4.55	8.94	10.9	8.98	4.68	1.40	3.96	8.98							
110	9.24	6.50	3.07	0.96	4.15	7.98	9.69	7.97	4.24	1.36	3.48	7.63							
115	7.59	6.14	2.17	0.96	3.78	7.19	8.62	7.12	3.83	1.30	3.07	6.56							
120	7.00	5.51	2.45	0.94	3.42	6.41	7.68	6.38	3.46	1.17	2.70	5.76							
125	6.15	4.99	2.31	0.89	3.06	5.68	6.83	5.69	3.09	1.07	2.50	5.19							
130	5.67	3.72	2.14	0.84	2.68	5.03	6.03	5.04	2.69	0.99	2.10	4.50							
135	4.35	3.25	2.08	0.77	2.33	4.41	5.27	4.41	2.27	0.95	1.90	3.53							
140	3.99	2.87	1.58	0.77	2.06	3.82	4.55	3.82	1.95	0.85	1.63	3.16							
145	3.65	2.31	1.31	0.77	1.82	3.25	3.83	3.23	1.65	0.73	1.38	2.35							
150	3.13	1.96	1.14	0.77	1.57	2.64	3.13	2.60	1.43	0.72	1.17	2.08							
155	2.56	1.55	1.04	0.77	1.26	2.17	2.53	2.19	1.16	0.69	0.96	1.74							
160	1.99	1.24	0.96	0.78	1.08	1.77	2.03	1.79	0.96	0.68	0.88	1.39							
165	1.54	0.96	0.91	0.78	0.93	1.29	1.42	1.30	0.83	0.68	0.82	1.08							
170	0.94	0.85	0.84	0.78	0.85	0.95	0.86	1.01	0.78	0.73	0.75	0.94							
175	0.83	0.78	0.79	0.78	0.82	0.78	0.81	0.85	0.78	0.73	0.74	0.82							
180	0.80	0.78	0.79	0.78	0.78	0.78	0.81	0.82	0.78	0.73	0.73	0.79							

C Range: 0 - 360DEG  
C Interval: 30.0DEG  
Test Speed: HIGH  
Temperature:25.3DEG  
Operators:WFW  
Test Date:2023-03-04

γ Range: 0 - 180DEG  
γ Interval: 1.0DEG  
Test System:EVERFINE GO-2000B\_V1 SYSTEM V2.0.269  
Humidity:65.0%  
Test Distance:10.800m [K=1.0000]  
Remarks:

## Photometric Data Table [cd]

G/C	0.0	30.0	60.0	90.0	120.0	150.0	180.0	210.0	240.0	270.0
0.0	34.39	34.34	34.30	34.20	34.18	34.12	34.39	34.34	34.30	34.20
3.0	34.40	34.33	34.31	34.16	34.15	34.07	34.32	34.32	34.20	34.21
6.0	34.40	34.27	34.19	33.99	33.99	33.92	34.19	34.19	34.07	34.12
9.0	34.30	34.13	33.97	33.71	33.71	33.71	34.02	34.03	33.86	33.85
12.0	34.09	33.89	33.65	33.33	33.35	33.45	33.81	33.76	33.52	33.49
15.0	33.81	33.55	33.23	32.84	32.90	33.12	33.51	33.43	33.10	33.02
18.0	33.46	33.13	32.71	32.29	32.37	32.72	33.13	33.00	32.57	32.41
21.0	33.10	32.67	32.08	31.59	31.74	32.22	32.67	32.49	31.96	31.71
24.0	32.64	32.19	31.37	30.82	31.04	31.66	32.15	31.90	31.26	30.94
27.0	32.15	31.64	30.57	29.95	30.26	30.98	31.57	31.27	30.46	30.06
30.0	31.39	31.05	29.69	28.95	29.38	30.28	30.92	30.54	29.60	29.08
33.0	30.66	30.28	28.73	27.92	28.42	29.48	30.23	29.73	28.65	28.05
36.0	29.98	29.20	27.69	26.77	27.38	28.62	29.47	28.90	27.61	26.90
39.0	29.31	28.33	26.59	25.55	26.27	27.72	28.68	27.96	26.52	25.68
42.0	28.74	27.44	25.43	24.29	25.06	26.81	27.94	27.01	25.37	24.40
45.0	28.15	26.68	24.23	22.94	23.80	25.86	27.26	26.10	24.10	23.07
48.0	27.53	25.88	23.01	21.52	22.52	24.98	26.57	25.20	22.86	21.66
51.0	26.83	25.08	21.75	20.06	21.18	24.12	25.84	24.32	21.56	20.19
54.0	26.13	24.19	20.48	18.56	19.81	23.24	25.08	23.42	20.21	18.68
57.0	25.37	23.34	19.23	16.94	18.43	22.33	24.28	22.49	18.84	17.10
60.0	24.59	22.45	18.02	15.33	17.08	21.44	23.47	21.57	17.52	15.47
63.0	23.79	21.52	16.83	13.65	15.80	20.54	22.69	20.62	16.26	13.89
66.0	22.98	20.62	15.59	11.89	14.52	19.63	21.89	19.73	14.98	12.19
69.0	22.18	19.72	14.30	10.17	13.28	18.75	21.11	18.83	13.77	10.58
72.0	21.33	18.79	13.00	8.486	12.10	17.85	20.32	17.97	12.56	8.953
75.0	20.50	17.91	11.75	6.749	10.99	17.02	19.55	17.14	11.41	7.270
78.0	19.64	17.04	10.60	5.135	9.970	16.20	18.76	16.31	10.36	5.739
81.0	18.77	16.16	9.637	3.556	9.069	15.35	17.94	15.47	9.437	4.270
84.0	17.84	15.26	8.758	2.254	8.231	14.51	17.09	14.62	8.605	3.003
87.0	16.85	14.33	7.933	1.301	7.441	13.63	16.22	13.74	7.817	2.066
90.0	15.86	13.35	7.150	0.9765	6.734	12.74	15.28	12.86	7.076	1.594
93.0	14.86	12.44	6.464	0.9696	6.111	11.90	14.34	12.00	6.411	1.531
96.0	13.90	11.56	5.862	0.9627	5.598	11.09	13.45	11.16	5.843	1.496
99.0	12.87	10.73	4.722	0.9627	5.161	10.31	12.58	10.39	5.373	1.454
102.0	11.67	9.679	3.778	0.9627	4.828	9.590	11.72	9.663	4.978	1.427
105.0	10.74	8.507	3.651	0.9627	4.551	8.939	10.94	8.984	4.681	1.399
108.0	10.14	6.958	3.346	0.9627	4.309	8.330	10.19	8.354	4.404	1.371
111.0	8.903	6.434	2.952	0.9627	4.073	7.832	9.451	7.786	4.148	1.358
114.0	7.913	6.198	2.240	0.9627	3.851	7.354	8.828	7.280	3.919	1.309
117.0	7.191	5.920	2.242	0.9557	3.637	6.904	8.239	6.817	3.691	1.254
120.0	7.003	5.512	2.452	0.9419	3.422	6.405	7.679	6.380	3.462	1.171
123.0	6.457	5.200	2.383	0.9487	3.207	5.983	7.166	5.957	3.254	1.115
126.0	5.979	4.839	2.252	0.8725	2.993	5.553	6.675	5.562	3.033	1.053
129.0	5.804	3.959	2.161	0.8380	2.764	5.165	6.190	5.168	2.804	1.018
132.0	5.039	3.359	2.092	0.8307	2.529	4.799	5.719	4.780	2.520	0.9698
135.0	4.352	3.254	2.085	0.7688	2.335	4.411	5.269	4.413	2.271	0.9490
138.0	3.990	2.992	1.823	0.7688	2.182	4.044	4.833	4.052	2.084	0.8867
141.0	3.982	2.755	1.490	0.7688	2.009	3.711	4.410	3.706	1.897	0.8313
144.0	3.755	2.375	1.351	0.7688	1.864	3.365	4.001	3.374	1.717	0.7827
147.0	3.450	2.167	1.254	0.7688	1.711	2.970	3.496	2.986	1.558	0.7272
150.0	3.132	1.959	1.143	0.7688	1.573	2.645	3.129	2.598	1.426	0.7203
153.0	2.792	1.675	1.053	0.7688	1.351	2.361	2.755	2.362	1.211	0.6926
156.0	2.453	1.495	1.032	0.7688	1.226	2.091	2.430	2.113	1.094	0.6789
159.0	2.106	1.295	0.9768	0.7688	1.122	1.842	2.112	1.864	0.9900	0.6787
162.0	1.788	1.094	0.9350	0.7757	1.018	1.584	1.834	1.615	0.9205	0.6787
165.0	1.539	0.9557	0.9074	0.7757	0.9285	1.288	1.419	1.303	0.8311	0.6787
168.0	1.275	0.9139	0.8659	0.7757	0.8728	1.066	1.154	1.116	0.7757	0.7272
171.0	0.9145	0.8380	0.8380	0.7757	0.8450	0.9069	0.8379	0.9631	0.7757	0.7341
174.0	0.8520	0.8238	0.8104	0.7757	0.8243	0.8238	0.8103	0.8591	0.7757	0.7341
177.0	0.7968	0.7826	0.7895	0.7757	0.8036	0.7757	0.8103	0.8173	0.7757	0.7341
180.0	0.7965	0.7826	0.7895	0.7757	0.7826	0.7757	0.8103	0.8172	0.7826	0.7341
G/C	300.0	330.0								
0.0	34.18	34.12								
3.0	34.17	34.16								
6.0	34.07	34.17								
9.0	33.89	34.03								
12.0	33.58	33.78								
15.0	33.18	33.48								
18.0	32.67	33.06								
21.0	32.06	32.55								
24.0	31.36	32.00								
27.0	30.55	31.33								
30.0	29.68	30.63								

C Range: 0 - 360DEG  
 C Interval: 30.0DEG  
 Test Speed: HIGH  
 Temperature: 25.3DEG  
 Operators: WFW  
 Test Date: 2023-03-04

γ Range: 0 - 180DEG  
 γ Interval: 1.0DEG  
 Test System: EVERFINE GO-2000B\_V1 SYSTEM V2.0.269  
 Humidity: 65.0%  
 Test Distance: 10.800m [K=1.0000]  
 Remarks:

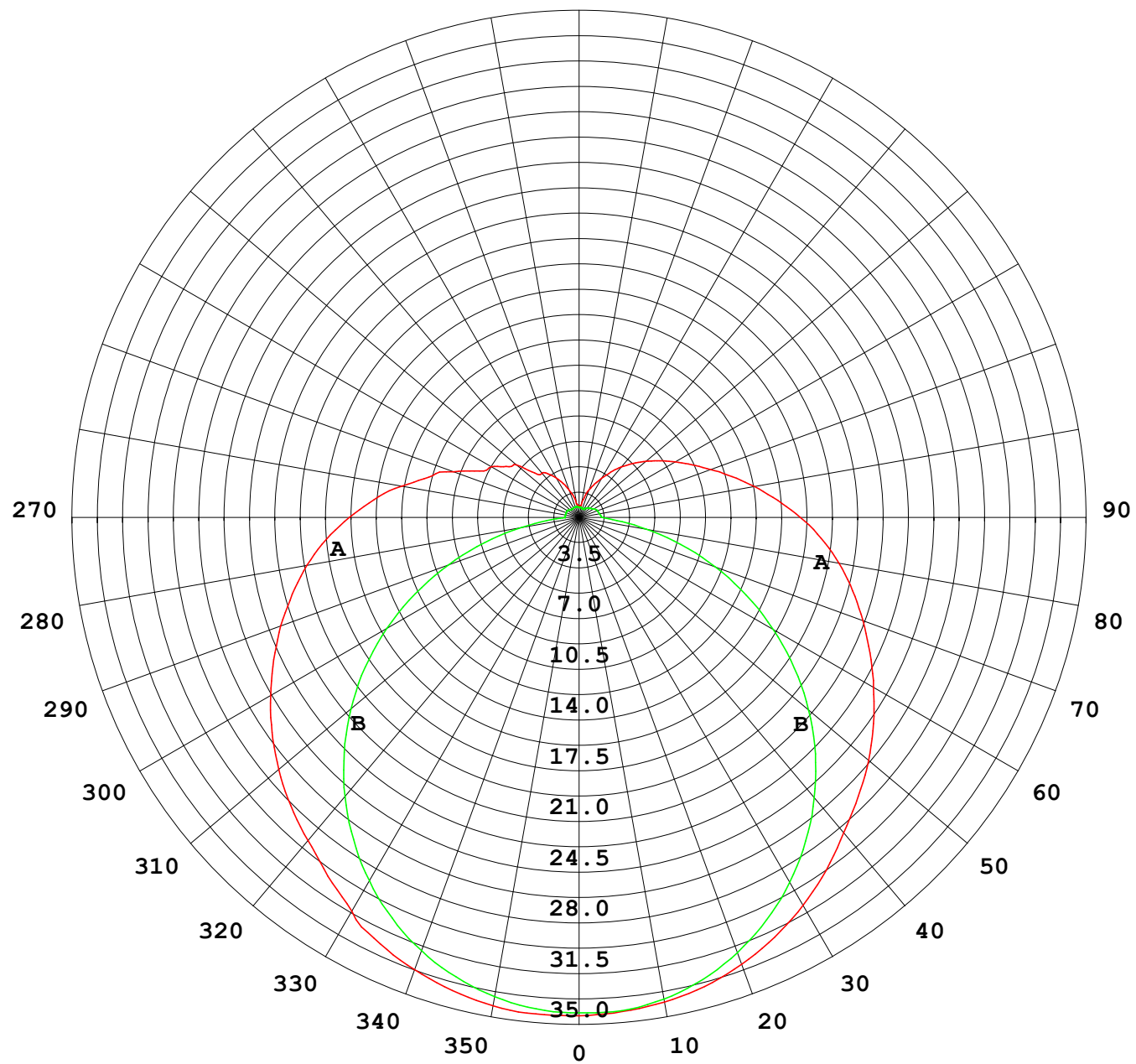
## Photometric Data Table [cd]

33.0	28.72	29.89
36.0	27.66	29.07
39.0	26.56	28.20
42.0	25.39	27.30
45.0	24.16	26.51
48.0	22.94	25.72
51.0	21.68	24.91
54.0	20.32	24.07
57.0	18.95	23.20
60.0	17.71	22.28
63.0	16.53	21.37
66.0	15.38	20.47
69.0	14.23	19.59
72.0	12.99	18.72
75.0	11.80	17.84
78.0	10.76	16.97
81.0	9.831	16.08
84.0	9.042	15.18
87.0	8.218	14.28
90.0	7.415	13.30
93.0	6.695	12.38
96.0	6.051	11.53
99.0	5.240	10.67
102.0	4.500	9.865
105.0	3.960	8.978
108.0	3.587	8.098
111.0	3.435	7.385
114.0	3.198	6.726
117.0	2.721	6.214
120.0	2.701	5.757
123.0	2.638	5.417
126.0	2.457	5.064
129.0	2.181	4.586
132.0	2.001	4.275
135.0	1.897	3.534
138.0	1.724	3.394
141.0	1.585	3.021
144.0	1.433	2.605
147.0	1.295	2.092
150.0	1.170	2.078
153.0	1.031	1.809
156.0	0.9418	1.663
159.0	0.8864	1.455
162.0	0.8380	1.282
165.0	0.8240	1.081
168.0	0.7618	0.9768
171.0	0.7479	0.9006
174.0	0.7411	0.8450
177.0	0.7411	0.8105
180.0	0.7341	0.7895

C Range: 0 - 360DEG  
C Interval: 30.0DEG  
Test Speed: HIGH  
Temperature:25.3DEG  
Operators:WFW  
Test Date:2023-03-04

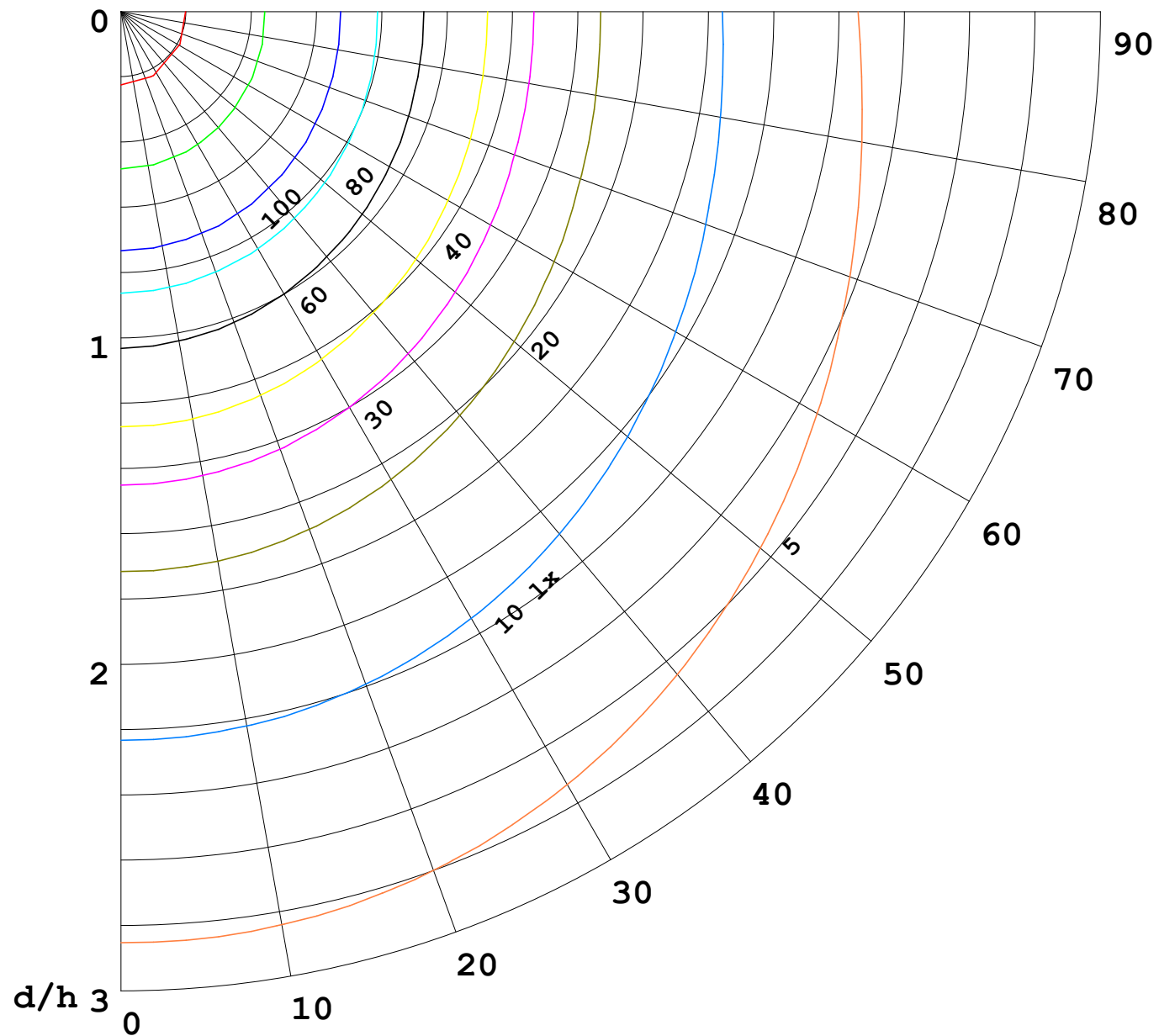
γ Range: 0 - 180DEG  
γ Interval: 1.0DEG  
Test System:EVERFINE GO-2000B\_V1 SYSTEM V2.0.269  
Humidity:65.0%  
Test Distance:10.800m [K=1.0000]  
Remarks:

I (cd)



1000 lm

$\kappa = 1$



F = 5000 lm  
 K = 0.7  
 Hcc = 0.0 m  
 Hfc = 0.0 m  
 Eave = 100 lx

	Pcc	Pw	Pfc
—	70	50	30
—	50	30	20

