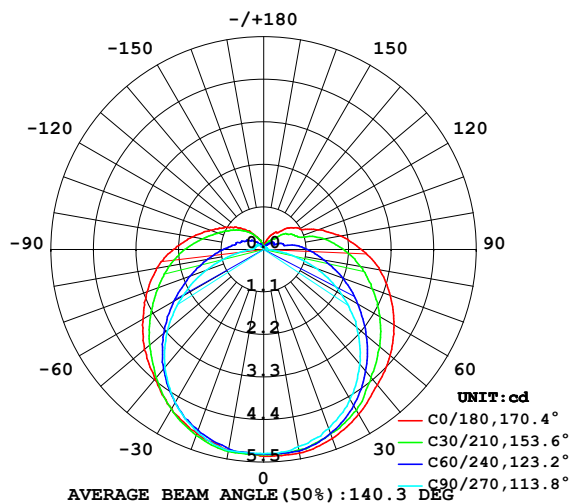


LUMINAIRE PHOTOMETRIC TEST REPORT

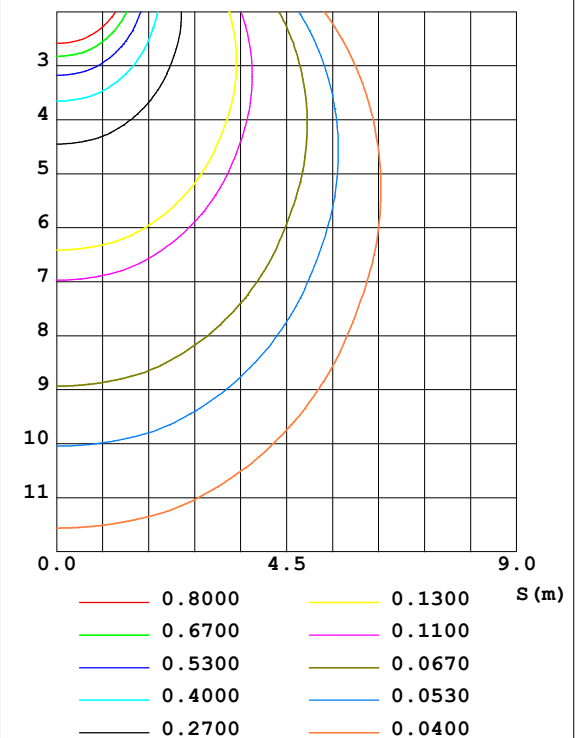
Test:U:24.00V I:0.2404A P:5.769W PF:1.000 Lamp Flux:24.4782x1 lm		
NAME: SF21-24V-5050-70-SPI4-RGBW-3000K-B	TYPE: 硅胶	WEIGHT:
DIM.: 28MM*11.5MM	SPEC.:	SERIAL No.:202303003
MFR.: OLYMPIA	SUR.:1.0*0.0115	PROTECTION ANGLE:

DATA OF LAMP		PHOTOMETRIC DATA				Eff: 4.24 lm/W
MODEL	5050	I _{max} (cd)	5.347	S/MH (C0/180)	1.37	
NOMINAL POWER (W)	18	LOR (%)	100.0	S/MH (C90/270)	1.26	
RATED VOLTAGE (V)	24	TOTAL FLUX (lm)	24.478	η UP, DN (C0-180)	8.6, 40.8	
NOMINAL FLUX (lm)	24.4782	CIE CLASS	SEMI-D.	η UP, DN (C180-360)	9.4, 41.2	
LAMPS INSIDE	1	η up (%)	18.0	CIBSE SHR NOM	1.50	
TEST VOLTAGE (V)	24.0	η down (%)	82.0	CIBSE SHR MAX	1.50	

LUMINOUS INTENSITY DISTRIBUTION DIAGRAM



C0 PLANE ISOLUX DIAGRAM (UNIT:lx)



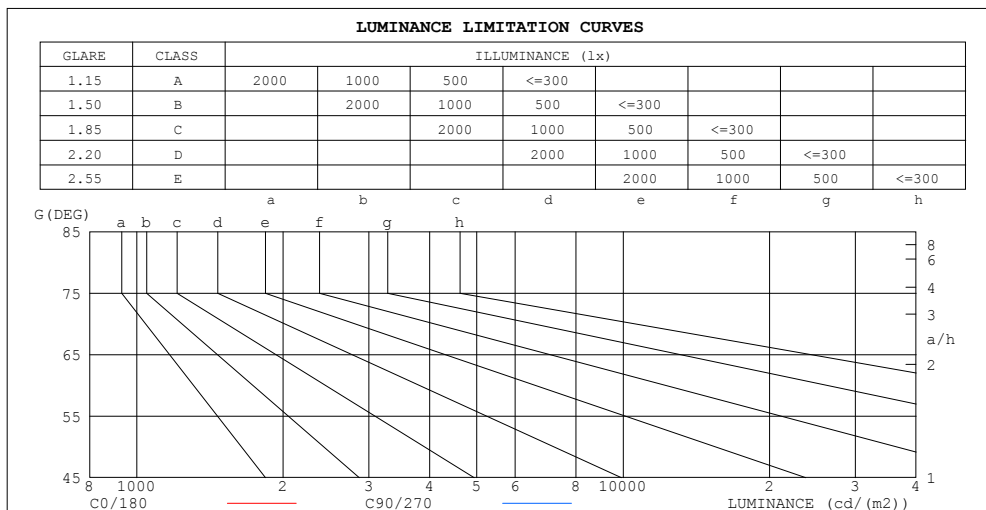
C Range: 0 - 360DEG
C Interval: 30.0DEG
Test Speed: HIGH
Temperature: 25.3DEG
Operators: WFW
Test Date: 2023-03-04

γ Range: 0 - 180DEG
γ Interval: 1.0DEG
Test System: EVERFINE GO-2000B_V1 SYSTEM V2.0.269
Humidity: 65.0%
Test Distance: 10.800m [K=1.0000]
Remarks:

ZONAL FLUX DIAGRAM AND LUMINANCE LIMITATION CURVES

ZONAL FLUX DIAGRAM:

γ	C0	C45	C90	C135	C180	C225	C270	C315	γ	Φ zone	Φ total	%lum, lamp
10	5.347	5.277	5.180	5.219	5.270	5.270	5.277	5.281	0- 10	0.5040	0.5040	2.06,2.06
20	5.201	5.063	4.931	4.987	5.062	5.045	5.022	5.042	10- 20	1.461	1.965	8.03,8.03
30	4.918	4.730	4.467	4.620	4.758	4.678	4.572	4.710	20- 30	2.252	4.217	17.2,17.2
40	4.578	4.211	3.864	4.118	4.383	4.179	3.976	4.228	30- 40	2.785	7.003	28.6,28.6
50	4.267	3.692	3.144	3.546	4.037	3.612	3.242	3.754	40- 50	3.034	10.04	41,41
60	3.893	3.137	2.326	2.961	3.601	3.030	2.418	3.220	50- 60	3.018	13.05	53.3,53.3
70	3.477	2.590	1.474	2.424	3.206	2.465	1.600	2.704	60- 70	2.766	15.82	64.6,64.6
80	3.048	2.064	0.6016	1.919	2.818	1.974	0.7901	2.209	70- 80	2.358	18.18	74.3,74.3
90	2.528	1.600	0.0900	1.493	2.333	1.545	0.2981	1.766	80- 90	1.882	20.06	82,82
100	2.030	1.116	0.0762	1.150	1.876	1.177	0.2493	1.350	90-100	1.450	21.51	87.9,87.9
110	1.497	0.7065	0.0762	0.9107	1.475	0.9283	0.2355	0.9836	100-110	1.058	22.57	92.2,92.2
120	1.087	0.5539	0.0762	0.7237	1.163	0.7513	0.2078	0.6995	110-120	0.7478	23.32	95.2,95.2
130	0.8661	0.4395	0.0762	0.5576	0.8655	0.5609	0.2008	0.4815	120-130	0.5275	23.84	97.4,97.4
140	0.5750	0.2770	0.0762	0.3948	0.6232	0.3914	0.1107	0.3222	130-140	0.3282	24.17	98.7,98.7
150	0.4641	0.1800	0.0762	0.2563	0.3878	0.2666	0.0693	0.1869	140-150	0.1825	24.35	99.5,99.5
160	0.2772	0.0899	0.0762	0.1524	0.2145	0.1662	0.0623	0.1178	150-160	0.0857	24.44	99.8,99.8
170	0.1109	0.0762	0.0762	0.0831	0.0554	0.1005	0.0623	0.0900	160-170	0.0314	24.47	100,100
180	0.0762	0.0796	0.0693	0.0796	0.0485	0.0831	0.0693	0.0658	170-180	0.0076	24.48	100,100
DEG	LUMINOUS INTENSITY:cd									UNIT:lm		



LUMINANCE cd/(m2)		
G (DEG)	C0/180	C90/270
85	322	26
80	176	35
75	126	40
70	102	43
65	87	45
60	78	47
55	71	48
50	66	49
45	63	50

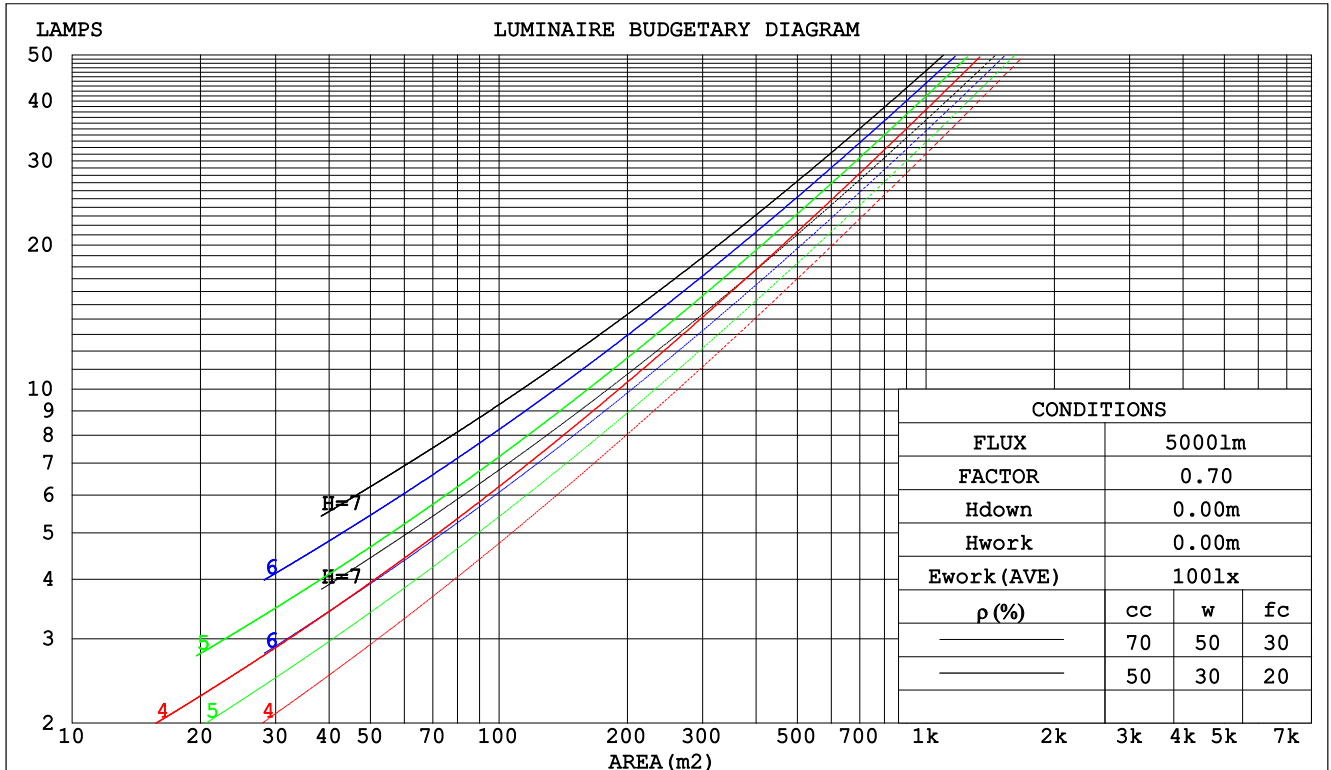
C Range: 0 - 360DEG
C Interval: 30.0DEG
Test Speed: HIGH
Temperature:25.3DEG
Operators:WFW
Test Date:2023-03-04

γ Range: 0 - 180DEG
 γ Interval: 1.0DEG
Test System:EVERFINE GO-2000B_V1 SYSTEM V2.0.269
Humidity:65.0%
Test Distance:10.800m [K=1.0000]
Remarks:

CU AND LUMINAIRE BUDGETARY ESTIMATE DIAGRAM

Test:U:24.00V I:0.2404A P:5.769W PF:1.000 Lamp Flux:24.4782x1 lm		
NAME: SF21-24V-5050-70-SPI4-RGBW-3000K-B	TYPE: 硅胶	WEIGHT:
DIM.: 28MM*11.5MM	SPEC.:	SERIAL No.:202303003
MFR.: OLYMPIA	SUR.:1.0*0.0115	PROTECTION ANGLE:

pcc	80%			70%			50%			30%			10%			0
pw	50%	30%	10%	50%	30%	10%	50%	30%	10%	50%	30%	10%	50%	30%	10%	0
pfc	20%			20%			20%			20%			20%			0
RCR	RCR:Room Cavity Ratio						Coefficients of Utilization(CU)									
0.0	1.15	1.15	1.15	1.10	1.10	1.10	1.01	1.01	1.01	.93	.93	.93	.85	.85	.85	.82
1.0	.95	.90	.85	.91	.87	.82	.84	.80	.76	.77	.74	.71	.70	.68	.65	.62
2.0	.82	.74	.67	.78	.71	.65	.72	.66	.61	.65	.61	.57	.60	.56	.53	.49
3.0	.71	.62	.55	.68	.60	.53	.62	.55	.50	.57	.51	.46	.52	.47	.43	.40
4.0	.62	.53	.45	.60	.51	.44	.55	.47	.42	.50	.44	.39	.46	.41	.37	.34
5.0	.55	.46	.39	.53	.44	.38	.49	.41	.35	.45	.38	.33	.41	.36	.31	.29
6.0	.49	.40	.33	.47	.39	.32	.44	.36	.31	.40	.34	.29	.37	.32	.27	.25
7.0	.45	.35	.29	.43	.34	.28	.40	.32	.27	.37	.30	.26	.34	.28	.24	.22
8.0	.40	.32	.26	.39	.31	.25	.36	.29	.24	.34	.27	.23	.31	.26	.21	.19
9.0	.37	.29	.23	.36	.28	.22	.33	.26	.21	.31	.25	.20	.29	.23	.19	.17
10.0	.34	.26	.21	.33	.25	.20	.31	.24	.19	.29	.23	.18	.27	.21	.17	.16



C Range: 0 - 360DEG
C Interval: 30.0DEG
Test Speed: HIGH
Temperature:25.3DEG
Operators:WFW
Test Date:2023-03-04

γ Range: 0 - 180DEG
γ Interval: 1.0DEG
Test System:EVERFINE GO-2000B_V1 SYSTEM V2.0.269
Humidity:65.0%
Test Distance:10.800m [K=1.0000]
Remarks:

WEC AND CCEC

Test:U:24.00V I:0.2404A P:5.769W PF:1.000 Lamp Flux:24.4782x1 lm					
NAME: SF21-24V-5050-70-SPI4-RGBW-3000K-B			TYPE: 硅胶		WEIGHT:
DIM.: 28MM*11.5MM			SPEC.:		SERIAL No.:202303003
MFR.: OLYMPIA			SUR.:1.0*0.0115		PROTECTION ANGLE:

pcc	80%			70%			50%			30%			10%			0	
pw	50%	30%	10%	50%	30%	10%	50%	30%	10%	50%	30%	10%	50%	30%	10%	0	
pfc	20%			20%			20%			20%			20%			0	
RCR	RCR:Room Cavity Ratio						Wall Exitance Coefficients(WEC)										
0.0																	
1.0	.388	.221	.070	.375	.214	.068	.351	.201	.064	.329	.190	.061	.309	.179	.058		
2.0	.335	.183	.056	.323	.178	.055	.302	.168	.052	.282	.158	.049	.263	.149	.047		
3.0	.297	.158	.047	.287	.153	.046	.267	.145	.044	.249	.136	.042	.232	.129	.040		
4.0	.267	.139	.041	.258	.135	.040	.240	.127	.038	.224	.120	.036	.208	.113	.034		
5.0	.243	.124	.036	.234	.120	.035	.218	.114	.033	.203	.107	.032	.189	.101	.030		
6.0	.222	.111	.032	.214	.108	.031	.200	.102	.030	.186	.097	.028	.173	.091	.027		
7.0	.205	.101	.029	.198	.099	.028	.184	.093	.027	.172	.088	.026	.160	.083	.024		
8.0	.190	.093	.026	.184	.090	.026	.171	.086	.024	.160	.081	.023	.149	.076	.022		
9.0	.177	.086	.024	.171	.083	.023	.160	.079	.022	.149	.075	.021	.139	.071	.020		
10.0	.166	.079	.022	.160	.077	.022	.150	.073	.021	.140	.069	.020	.130	.066	.019		

pcc	80%			70%			50%			30%			10%			0
pw	50%	30%	10%	50%	30%	10%	50%	30%	10%	50%	30%	10%	50%	30%	10%	0
pfc	20%			20%			20%			20%			20%			0
RCR	RCR:Room Cavity Ratio						Ceiling Cavity Exitance Coefficients(CCEC)									
0.0	.328	.328	.328	.280	.280	.280	.191	.191	.191	.110	.110	.110	.035	.035	.035	
1.0	.324	.294	.267	.278	.252	.230	.190	.174	.159	.109	.100	.092	.035	.032	.030	
2.0	.318	.271	.232	.272	.234	.201	.186	.162	.140	.107	.094	.082	.034	.030	.027	
3.0	.310	.255	.211	.266	.220	.183	.182	.153	.128	.105	.089	.076	.034	.029	.025	
4.0	.302	.242	.197	.259	.209	.171	.178	.146	.120	.103	.085	.071	.033	.028	.023	
5.0	.294	.233	.187	.253	.201	.163	.174	.141	.115	.101	.083	.068	.033	.027	.022	
6.0	.287	.225	.180	.247	.194	.157	.170	.136	.111	.099	.080	.066	.032	.026	.022	
7.0	.280	.218	.175	.241	.189	.152	.166	.132	.108	.097	.078	.064	.031	.026	.021	
8.0	.273	.212	.171	.235	.184	.149	.163	.129	.106	.095	.076	.063	.031	.025	.021	
9.0	.267	.208	.168	.230	.180	.146	.159	.127	.104	.093	.075	.062	.030	.025	.021	
10.0	.261	.203	.165	.225	.177	.144	.156	.124	.102	.091	.073	.061	.030	.024	.020	

C Range: 0 - 360DEG
 C Interval: 30.0DEG
 Test Speed: HIGH
 Temperature:25.3DEG
 Operators:WFW
 Test Date:2023-03-04

γ Range: 0 - 180DEG
 γ Interval: 1.0DEG
 Test System:EVERFINE GO-2000B_V1 SYSTEM V2.0.269
 Humidity:65.0%
 Test Distance:10.800m [K=1.0000]
 Remarks:

Uncorrected UGR Table

Test:U:24.00V I:0.2404A P:5.769W PF:1.000 Lamp Flux:24.4782x1 lm											
NAME: SF21-24V-5050-70-SPI4-RGBW-3000K-B						TYPE:硅胶			WEIGHT:		
DIM.: 28MM*11.5MM						SPEC.:			SERIAL No.:202303003		
MFR.: OLYMPIA						SUR.:1.0*0.0115			PROTECTION ANGLE:		
ceiling/cavity	0.7	0.7	0.5	0.5	0.3	0.7	0.7	0.5	0.5	0.3	
walls	0.5	0.3	0.5	0.3	0.3	0.5	0.3	0.5	0.3	0.3	
working plane	0.2	0.2	0.2	0.2	0.2	0.2	0.2	0.2	0.2	0.2	
Room dimensions		Viewed crosswise					Viewed endwise				
x = 2H y = 2H	2H	2.9	4.3	3.4	4.8	5.4	1.0	2.4	1.5	2.9	3.4
	3H	5.7	6.9	6.2	7.5	8.1	2.6	3.9	3.1	4.4	5.0
	4H	7.2	8.4	7.8	9.0	9.6	3.3	4.5	3.8	5.0	5.7
	6H	8.9	10.1	9.5	10.6	11.3	3.7	4.9	4.3	5.5	6.1
	8H	9.9	11.0	10.5	11.6	12.2	3.9	5.0	4.5	5.6	6.2
	12H	11.0	12.0	11.6	12.6	13.3	4.0	5.0	4.6	5.6	6.3
4H	2H	3.5	4.7	4.0	5.2	5.9	2.1	3.3	2.6	3.8	4.5
	3H	6.5	7.5	7.1	8.1	8.8	4.0	5.0	4.6	5.6	6.3
	4H	8.2	9.2	8.8	9.8	10.5	4.8	5.8	5.5	6.4	7.1
	6H	10.1	11.0	10.8	11.6	12.4	5.5	6.4	6.2	7.1	7.8
	8H	11.2	12.0	11.9	12.7	13.4	5.8	6.6	6.5	7.3	8.0
	12H	12.4	13.2	13.1	13.9	14.6	6.0	6.7	6.6	7.4	8.2
8H	4H	8.5	9.3	9.2	10.0	10.8	5.9	6.7	6.5	7.3	8.1
	6H	10.8	11.5	11.5	12.1	12.9	7.0	7.7	7.7	8.3	9.1
	8H	12.0	12.7	12.7	13.4	14.2	7.5	8.1	8.2	8.8	9.6
	12H	13.5	14.1	14.3	14.8	15.6	7.9	8.4	8.6	9.1	10.0
12H	4H	8.6	9.3	9.2	10.0	10.8	6.2	7.0	6.9	7.6	8.4
	6H	10.9	11.5	11.6	12.2	13.0	7.5	8.2	8.2	8.9	9.7
	8H	12.3	12.8	13.0	13.5	14.4	8.2	8.8	8.9	9.5	10.3
Variations with the observer position at spacings:											
S = 1.0H	+ 0.1 / - 0.1					+ 0.1 / - 0.1					
1.5H	+ 0.2 / - 0.2					+ 0.2 / - 0.3					
2.0H	+ 0.2 / - 0.3					+ 0.2 / - 0.4					

CIE Pub.117 Corrected 24.48 lm Total Lamp Luminous Flux. (8log(F/F0) = -12.9)

C Range: 0 - 360DEG
 C Interval: 30.0DEG
 Test Speed: HIGH
 Temperature:25.3DEG
 Operators:WFW
 Test Date:2023-03-04

γ Range: 0 - 180DEG
 γ Interval: 1.0DEG
 Test System:EVERFINE GO-2000B_V1 SYSTEM V2.0.269
 Humidity:65.0%
 Test Distance:10.800m [K=1.0000]
 Remarks:

UTILIZATION FACTORS TABLE

Test:U:24.00V I:0.2404A P:5.769W PF:1.000 Lamp Flux:24.4782x1 lm		
NAME: SF21-24V-5050-70-SPI4-RGBW-3000K-B	TYPE: 硅胶	WEIGHT:
DIM.: 28MM*11.5MM	SPEC.:	SERIAL No.:202303003
MFR.: OLYMPIA	SUR.:1.0*0.0115	PROTECTION ANGLE:

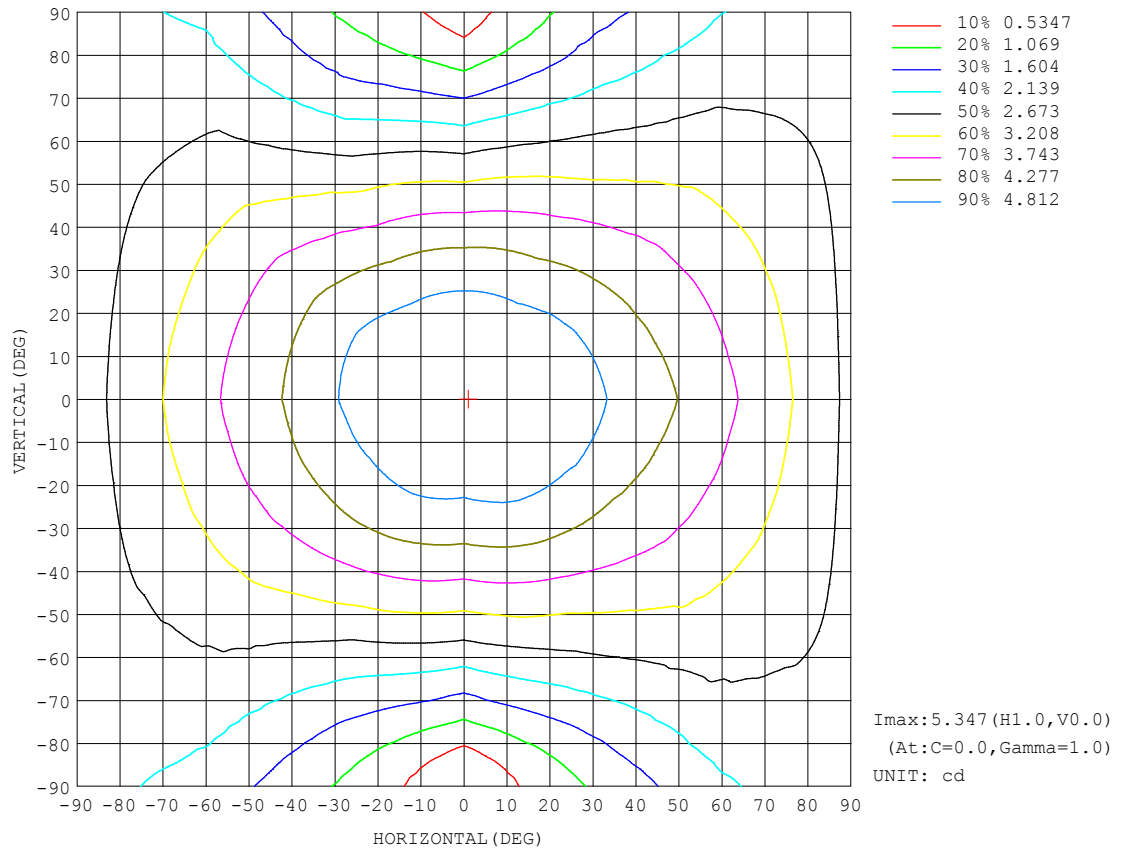
REFLECTANCE										
Ceiling	0.8	0.8	0.8	0.7	0.7	0.7	0.5	0.5	0.5	0
Walls	0.7	0.5	0.3	0.7	0.5	0.3	0.7	0.5	0.3	0
Working plane	0.2	0.2	0.2	0.2	0.2	0.2	0.2	0.2	0.2	0
ROOM INDEX	UTILIZATION FACTORS (PERCENT) $k(RI) \times RCR = 5$									
$k = 0.60$	48	35	28	47	35	28	45	34	27	21
0.80	57	44	36	55	43	35	52	42	35	27
1.00	65	52	43	63	51	43	59	51	41	33
1.25	71	59	50	69	57	49	65	55	48	38
1.50	77	64	56	74	63	55	69	60	53	42
2.00	84	73	64	81	71	63	75	67	60	48
2.50	88	78	70	85	76	68	79	71	65	52
3.00	92	83	75	88	80	73	82	75	69	56
4.00	97	89	82	93	86	80	86	80	75	61
5.00	100	93	87	96	89	84	88	83	79	64
ROOM INDEX	UF(total)									Direct
According to DIN EN 13032-2 2004			Suspended					SHRNM = 1.25		

C Range: 0 - 360DEG
 C Interval: 30.0DEG
 Test Speed: HIGH
 Temperature:25.3DEG
 Operators:WFW
 Test Date:2023-03-04

γ Range: 0 - 180DEG
 γ Interval: 1.0DEG
 Test System:EVERFINE GO-2000B_V1 SYSTEM V2.0.269
 Humidity:65.0%
 Test Distance:10.800m [K=1.0000]
 Remarks:

ISOCANDELA DIAGRAM

Test:U:24.00V I:0.2404A P:5.769W PF:1.000 Lamp Flux:24.4782x1 lm		
NAME: SF21-24V-5050-70-SPI4-RGBW-3000K-B	TYPE: 硅胶	WEIGHT:
DIM.: 28MM*11.5MM	SPEC.:	SERIAL No.:202303003
MFR.: OLYMPIA	SUR.:1.0*0.0115	PROTECTION ANGLE:

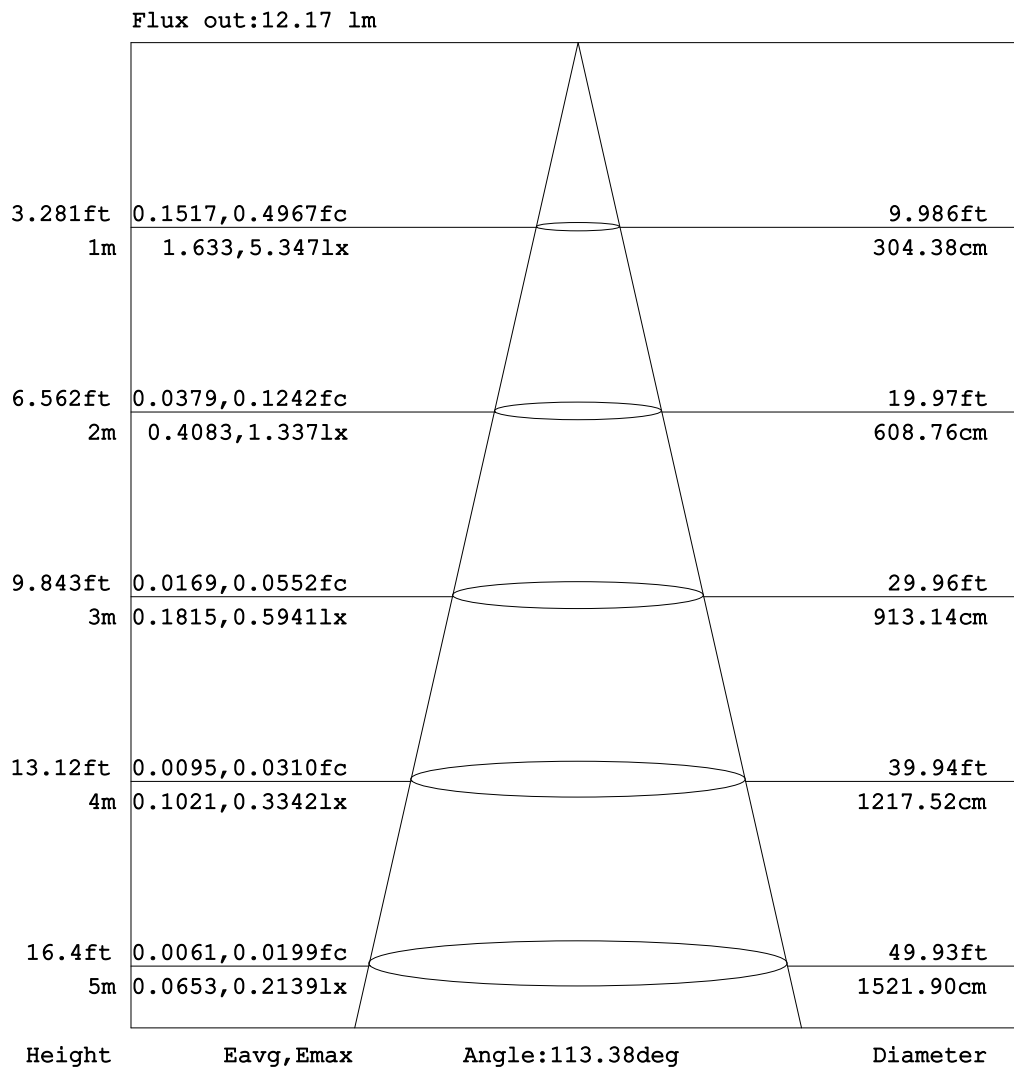


C Range: 0 - 360DEG
C Interval: 30.0DEG
Test Speed: HIGH
Temperature:25.3DEG
Operators:WFW
Test Date:2023-03-04

γ Range: 0 - 180DEG
 γ Interval: 1.0DEG
Test System:EVERFINE GO-2000B_V1 SYSTEM V2.0.269
Humidity:65.0%
Test Distance:10.800m [K=1.0000]
Remarks:

AAI Figure

Test:U:24.00V I:0.2404A P:5.769W PF:1.000 Lamp Flux:24.4782x1 lm		
NAME: SF21-24V-5050-70-SPI4-RGBW-3000K-B	TYPE: 硅胶	WEIGHT:
DIM.: 28MM*11.5MM	SPEC.:	SERIAL No.:202303003
MFR.: OLYMPIA	SUR.:1.0*0.0115	PROTECTION ANGLE:



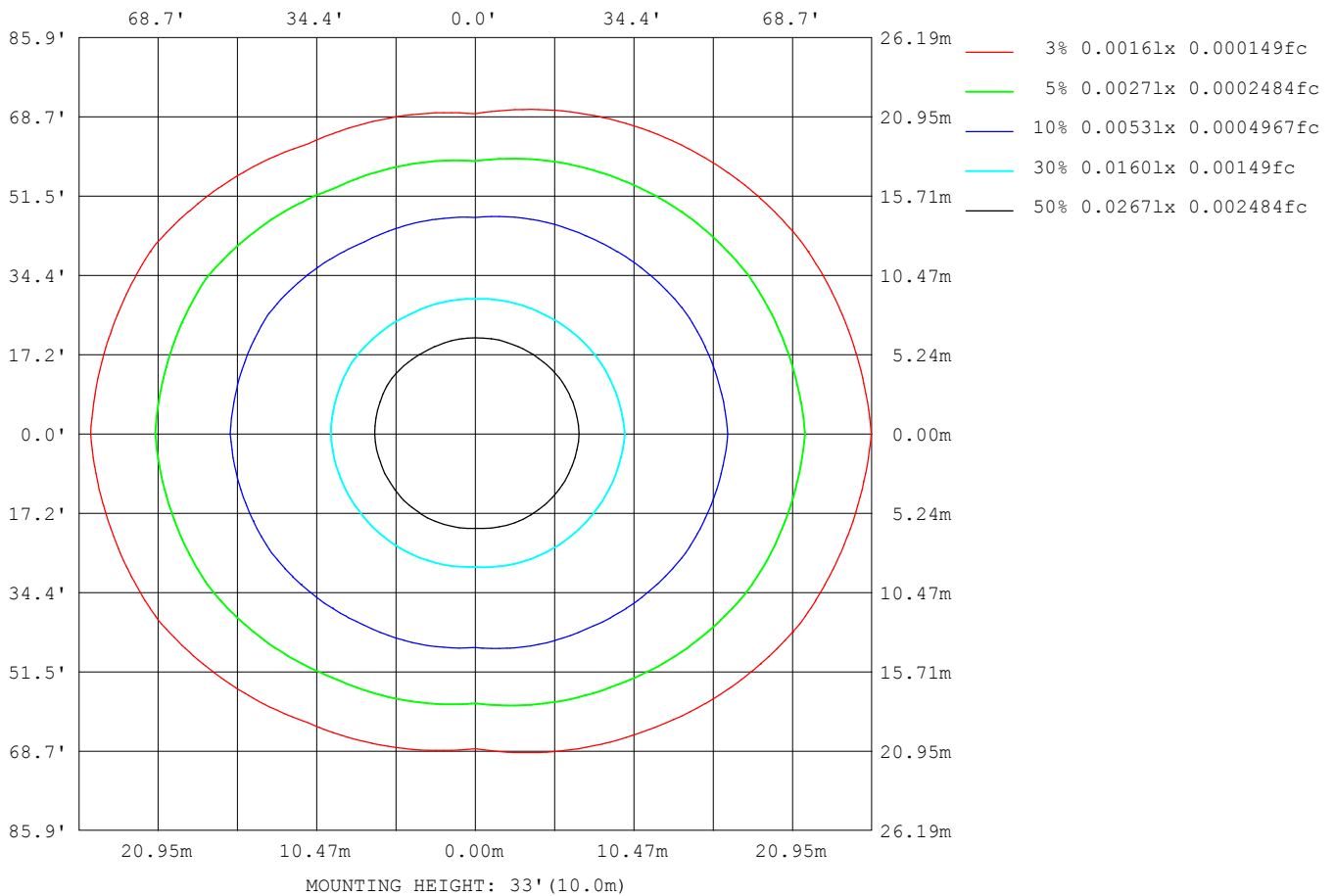
Note:The Curves indicate the illuminated area and the average illumination when the luminaire is at different distance.

C Range: 0 - 360DEG
C Interval: 30.0DEG
Test Speed: HIGH
Temperature:25.3DEG
Operators:WFW
Test Date:2023-03-04

γ Range: 0 - 180DEG
γ Interval: 1.0DEG
Test System:EVERFINE GO-2000B_V1 SYSTEM V2.0.269
Humidity:65.0%
Test Distance:10.800m [K=1.0000]
Remarks:

ISOLUX DIAGRAM

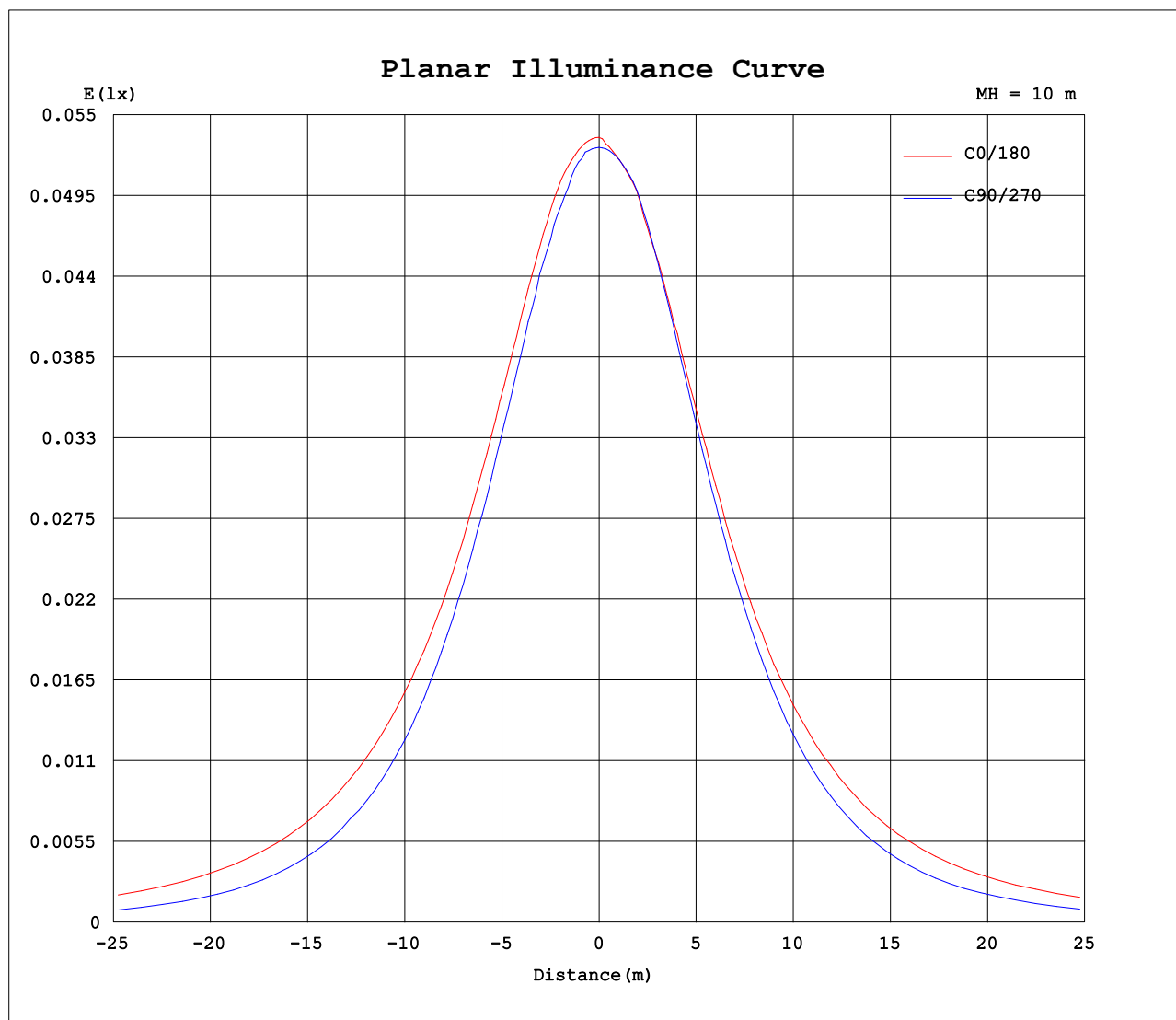
Test:U:24.00V I:0.2404A P:5.769W PF:1.000 Lamp Flux:24.4782x1 lm		
NAME: SF21-24V-5050-70-SPI4-RGBW-3000K-B	TYPE: 硅胶	WEIGHT:
DIM.: 28MM*11.5MM	SPEC.:	SERIAL No.:202303003
MFR.: OLYMPIA	SUR.:1.0*0.0115	PROTECTION ANGLE:



C Range: 0 - 360DEG
C Interval: 30.0DEG
Test Speed: HIGH
Temperature:25.3DEG
Operators:WFW
Test Date:2023-03-04

γ Range: 0 - 180DEG
 γ Interval: 1.0DEG
Test System:EVERFINE GO-2000B_V1 SYSTEM V2.0.269
Humidity:65.0%
Test Distance:10.800m [K=1.0000]
Remarks:

Planar Illuminance Curve



C Range: 0 - 360DEG
C Interval: 30.0DEG
Test Speed: HIGH
Temperature: 25.3DEG
Operators: WFW
Test Date: 2023-03-04

γ Range: 0 - 180DEG
 γ Interval: 1.0DEG
Test System: EVERFINE GO-2000B_V1 SYSTEM V2.0.269
Humidity: 65.0%
Test Distance: 10.800m [K=1.0000]
Remarks:

LUMINOUS DISTRIBUTION INTENSITY DATA

Test:U:24.00V I:0.2404A P:5.769W PF:1.000 Lamp Flux:24.4782x1 lm		
NAME: SF21-24V-5050-70-SPI4-RGBW-3000K-B	TYPE: 硅胶	WEIGHT:
DIM.: 28MM*11.5MM	SPEC.:	SERIAL No.:202303003
MFR.: OLYMPIA	SUR.:1.0*0.0115	PROTECTION ANGLE:

Table--1

UNIT: cd

C (DEG) γ (DEG)	0	30	60	90	120	150	180	210	240	270	300	330						
0	5.35	5.31	5.29	5.28	5.28	5.29	5.35	5.31	5.29	5.28	5.28	5.29						
5	5.35	5.31	5.29	5.26	5.28	5.25	5.28	5.31	5.27	5.28	5.26	5.29						
10	5.35	5.26	5.29	5.18	5.25	5.19	5.27	5.31	5.24	5.28	5.26	5.30						
15	5.29	5.19	5.21	5.08	5.14	5.11	5.16	5.24	5.12	5.18	5.15	5.25						
20	5.20	5.07	5.06	4.93	4.99	4.98	5.06	5.12	4.97	5.02	4.99	5.09						
25	5.07	4.95	4.88	4.71	4.81	4.83	4.92	4.96	4.83	4.82	4.83	4.98						
30	4.92	4.81	4.65	4.47	4.59	4.65	4.76	4.77	4.58	4.57	4.61	4.81						
35	4.74	4.56	4.41	4.18	4.33	4.44	4.58	4.56	4.31	4.29	4.36	4.61						
40	4.58	4.32	4.10	3.86	4.03	4.20	4.38	4.33	4.03	3.98	4.08	4.38						
45	4.44	4.12	3.80	3.52	3.72	3.95	4.19	4.08	3.70	3.62	3.82	4.16						
50	4.27	3.92	3.46	3.14	3.37	3.73	4.04	3.85	3.37	3.24	3.55	3.96						
55	4.09	3.70	3.13	2.74	3.01	3.50	3.81	3.62	3.04	2.84	3.23	3.75						
60	3.89	3.48	2.80	2.33	2.65	3.28	3.60	3.37	2.69	2.42	2.92	3.52						
65	3.69	3.25	2.49	1.90	2.31	3.03	3.40	3.14	2.33	2.02	2.64	3.28						
70	3.48	2.99	2.19	1.47	2.02	2.83	3.21	2.90	2.03	1.60	2.36	3.05						
75	3.27	2.77	1.86	1.02	1.73	2.60	3.01	2.69	1.72	1.17	2.08	2.83						
80	3.05	2.54	1.59	0.60	1.47	2.37	2.82	2.47	1.47	0.79	1.82	2.60						
85	2.81	2.31	1.34	0.23	1.25	2.15	2.59	2.26	1.26	0.49	1.61	2.36						
90	2.53	2.07	1.13	0.09	1.05	1.94	2.33	2.04	1.05	0.30	1.41	2.13						
95	2.27	1.83	0.94	0.09	0.89	1.71	2.09	1.82	0.87	0.27	1.25	1.89						
100	2.03	1.60	0.63	0.08	0.78	1.52	1.88	1.61	0.75	0.25	1.04	1.66						
105	1.73	1.32	0.53	0.08	0.70	1.34	1.65	1.42	0.71	0.24	0.84	1.42						
110	1.50	0.95	0.46	0.08	0.63	1.19	1.47	1.25	0.61	0.24	0.75	1.21						
115	1.25	0.88	0.31	0.08	0.57	1.05	1.28	1.12	0.51	0.22	0.65	1.04						
120	1.09	0.80	0.30	0.08	0.51	0.93	1.16	1.00	0.51	0.21	0.50	0.90						
125	0.98	0.72	0.30	0.08	0.46	0.82	1.00	0.89	0.39	0.21	0.39	0.80						
130	0.87	0.58	0.30	0.08	0.39	0.73	0.87	0.78	0.34	0.20	0.27	0.69						
135	0.73	0.38	0.23	0.08	0.34	0.60	0.75	0.67	0.27	0.16	0.21	0.55						
140	0.58	0.35	0.20	0.08	0.28	0.51	0.62	0.58	0.21	0.11	0.18	0.46						
145	0.55	0.27	0.16	0.08	0.24	0.42	0.50	0.48	0.17	0.08	0.12	0.35						
150	0.46	0.21	0.15	0.08	0.20	0.31	0.39	0.37	0.16	0.07	0.08	0.29						
155	0.37	0.18	0.08	0.08	0.15	0.26	0.30	0.31	0.08	0.06	0.06	0.24						
160	0.28	0.10	0.08	0.08	0.13	0.17	0.21	0.25	0.08	0.06	0.06	0.18						
165	0.21	0.07	0.08	0.08	0.10	0.09	0.12	0.17	0.08	0.06	0.05	0.13						
170	0.11	0.07	0.08	0.08	0.08	0.08	0.06	0.12	0.08	0.06	0.08	0.10						
175	0.08	0.07	0.08	0.07	0.08	0.08	0.06	0.09	0.08	0.08	0.06	0.08						
180	0.08	0.08	0.08	0.07	0.08	0.08	0.05	0.08	0.08	0.07	0.06	0.07						

C Range: 0 - 360DEG
C Interval: 30.0DEG
Test Speed: HIGH
Temperature:25.3DEG
Operators:WFW
Test Date:2023-03-04

γ Range: 0 - 180DEG
γ Interval: 1.0DEG
Test System:EVERFINE GO-2000B_V1 SYSTEM V2.0.269
Humidity:65.0%
Test Distance:10.800m [K=1.0000]
Remarks:

Photometric Data Table [cd]

G/C	0.0	30.0	60.0	90.0	120.0	150.0	180.0	210.0	240.0	270.0
0.0	5.347	5.305	5.291	5.277	5.277	5.291	5.347	5.305	5.291	5.277
3.0	5.347	5.305	5.291	5.278	5.277	5.257	5.305	5.305	5.277	5.277
6.0	5.347	5.291	5.291	5.264	5.277	5.243	5.277	5.305	5.271	5.277
9.0	5.347	5.271	5.291	5.194	5.264	5.194	5.271	5.305	5.256	5.277
12.0	5.333	5.270	5.257	5.153	5.209	5.160	5.235	5.284	5.173	5.250
15.0	5.292	5.187	5.208	5.076	5.139	5.111	5.160	5.236	5.118	5.181
18.0	5.236	5.139	5.125	4.979	5.063	5.028	5.118	5.160	5.035	5.084
21.0	5.174	5.056	5.028	4.875	4.959	4.959	5.028	5.084	4.938	4.987
24.0	5.098	4.973	4.918	4.758	4.855	4.875	4.952	4.987	4.834	4.862
27.0	5.021	4.896	4.793	4.626	4.731	4.772	4.862	4.897	4.709	4.724
30.0	4.918	4.806	4.655	4.467	4.586	4.654	4.758	4.772	4.584	4.572
33.0	4.821	4.681	4.509	4.307	4.440	4.515	4.640	4.655	4.425	4.412
36.0	4.703	4.501	4.343	4.134	4.274	4.398	4.536	4.516	4.266	4.232
39.0	4.599	4.377	4.163	3.933	4.101	4.252	4.398	4.364	4.086	4.038
42.0	4.516	4.245	3.983	3.726	3.907	4.100	4.287	4.225	3.919	3.838
45.0	4.440	4.120	3.796	3.518	3.720	3.947	4.190	4.080	3.705	3.623
48.0	4.336	3.982	3.602	3.296	3.512	3.823	4.079	3.934	3.504	3.401
51.0	4.232	3.864	3.401	3.068	3.298	3.698	3.975	3.810	3.303	3.166
54.0	4.128	3.733	3.194	2.825	3.083	3.566	3.850	3.657	3.088	2.910
57.0	4.017	3.608	3.000	2.590	2.854	3.407	3.726	3.519	2.880	2.674
60.0	3.893	3.476	2.799	2.326	2.646	3.275	3.601	3.373	2.686	2.418
63.0	3.775	3.324	2.626	2.077	2.446	3.130	3.483	3.228	2.478	2.175
66.0	3.650	3.179	2.432	1.821	2.245	2.985	3.379	3.096	2.271	1.926
69.0	3.526	3.040	2.238	1.537	2.078	2.846	3.255	2.958	2.091	1.670
72.0	3.394	2.929	2.065	1.274	1.892	2.715	3.130	2.819	1.911	1.421
75.0	3.270	2.770	1.864	1.024	1.725	2.604	3.012	2.688	1.717	1.171
78.0	3.131	2.625	1.691	0.7473	1.566	2.479	2.881	2.556	1.592	0.9425
81.0	3.020	2.493	1.524	0.4911	1.427	2.334	2.763	2.431	1.412	0.7208
84.0	2.854	2.375	1.393	0.2766	1.296	2.195	2.618	2.300	1.288	0.5408
87.0	2.688	2.202	1.254	0.1589	1.171	2.077	2.486	2.182	1.163	0.3952
90.0	2.528	2.070	1.129	0.0900	1.046	1.939	2.333	2.044	1.045	0.2981
93.0	2.376	1.918	1.012	0.0900	0.9423	1.821	2.188	1.898	0.9281	0.2771
96.0	2.217	1.780	0.9214	0.0830	0.8592	1.689	2.056	1.767	0.8516	0.2701
99.0	2.078	1.641	0.7488	0.0762	0.7899	1.551	1.925	1.649	0.7686	0.2495
102.0	1.898	1.488	0.5334	0.0762	0.7480	1.433	1.793	1.524	0.7341	0.2425
105.0	1.732	1.315	0.5333	0.0762	0.6996	1.336	1.655	1.420	0.7057	0.2424
108.0	1.621	1.038	0.5058	0.0762	0.6513	1.260	1.530	1.316	0.6232	0.2355
111.0	1.441	0.9419	0.4503	0.0762	0.6097	1.156	1.419	1.233	0.6160	0.2355
114.0	1.289	0.8796	0.3191	0.0762	0.5819	1.066	1.316	1.150	0.5262	0.2286
117.0	1.143	0.8517	0.2910	0.0762	0.5404	0.9833	1.219	1.067	0.4987	0.2078
120.0	1.087	0.8031	0.3047	0.0762	0.5127	0.9348	1.163	0.9974	0.5052	0.2078
123.0	1.039	0.7340	0.3047	0.0762	0.4712	0.8792	1.046	0.9282	0.4223	0.2078
126.0	0.9561	0.7130	0.3047	0.0762	0.4434	0.7825	0.9695	0.8659	0.3947	0.2078
129.0	0.8937	0.6229	0.3047	0.0762	0.4019	0.7272	0.9205	0.7967	0.3804	0.2009
132.0	0.8381	0.4982	0.2703	0.0762	0.3602	0.6647	0.8310	0.7343	0.3047	0.2008
135.0	0.7276	0.3809	0.2287	0.0762	0.3394	0.6025	0.7477	0.6720	0.2701	0.1595
138.0	0.6236	0.3877	0.2217	0.0762	0.3118	0.5469	0.6715	0.6165	0.2422	0.1039
141.0	0.5543	0.3254	0.1940	0.0762	0.2840	0.4917	0.6164	0.5543	0.2008	0.0902
144.0	0.5541	0.2770	0.1664	0.0762	0.2563	0.4293	0.5398	0.5058	0.1731	0.0831
147.0	0.5059	0.2631	0.1524	0.0762	0.2287	0.3946	0.4569	0.4434	0.1731	0.0762
150.0	0.4641	0.2076	0.1524	0.0762	0.2010	0.3115	0.3878	0.3742	0.1590	0.0693
153.0	0.4226	0.1801	0.1247	0.0762	0.1594	0.2770	0.3391	0.3464	0.0899	0.0761
156.0	0.3603	0.1799	0.0831	0.0762	0.1455	0.2284	0.2770	0.3048	0.0831	0.0623
159.0	0.2980	0.1107	0.0831	0.0762	0.1385	0.1869	0.2421	0.2495	0.0831	0.0623
162.0	0.2427	0.0693	0.0831	0.0762	0.1248	0.1660	0.1799	0.2148	0.0831	0.0623
165.0	0.2079	0.0693	0.0831	0.0762	0.1039	0.0900	0.1176	0.1664	0.0831	0.0623
168.0	0.1595	0.0693	0.0831	0.0762	0.0970	0.0831	0.0760	0.1317	0.0831	0.0623
171.0	0.1040	0.0693	0.0831	0.0762	0.0900	0.0831	0.0554	0.1109	0.0831	0.0623
174.0	0.0970	0.0693	0.0831	0.0761	0.0831	0.0831	0.0554	0.0970	0.0831	0.0830
177.0	0.0831	0.0693	0.0831	0.0623	0.0831	0.0831	0.0554	0.0900	0.0831	0.0693
180.0	0.0762	0.0831	0.0762	0.0693	0.0762	0.0831	0.0485	0.0831	0.0831	0.0693
G/C	300.0	330.0								
0.0	5.277	5.291								
3.0	5.277	5.291								
6.0	5.264	5.291								
9.0	5.264	5.298								
12.0	5.187	5.291								
15.0	5.153	5.250								
18.0	5.056	5.174								
21.0	4.965	5.084								
24.0	4.862	5.022								
27.0	4.737	4.918								
30.0	4.612	4.807								

C Range: 0 - 360DEG
 C Interval: 30.0DEG
 Test Speed: HIGH
 Temperature: 25.3DEG
 Operators: WFW
 Test Date: 2023-03-04

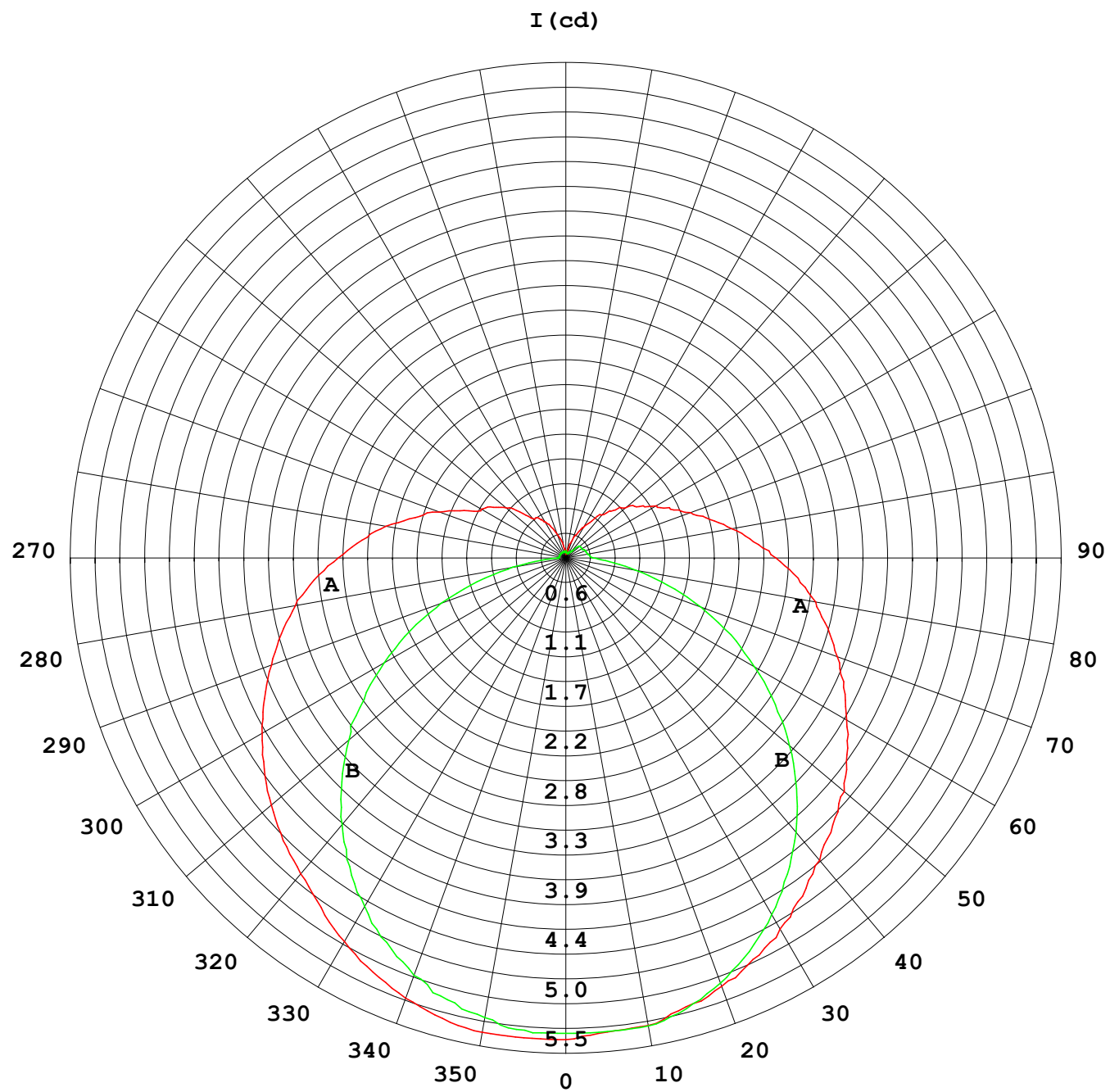
γ Range: 0 - 180DEG
 γ Interval: 1.0DEG
 Test System: EVERFINE GO-2000B_V1 SYSTEM V2.0.269
 Humidity: 65.0%
 Test Distance: 10.800m [K=1.0000]
 Remarks:

Photometric Data Table [cd]

33.0	4.487	4.696
36.0	4.300	4.564
39.0	4.141	4.433
42.0	3.975	4.281
45.0	3.823	4.163
48.0	3.670	4.038
51.0	3.483	3.914
54.0	3.303	3.789
57.0	3.081	3.643
60.0	2.922	3.519
63.0	2.742	3.387
66.0	2.583	3.235
69.0	2.403	3.096
72.0	2.236	2.972
75.0	2.084	2.826
78.0	1.925	2.688
81.0	1.786	2.549
84.0	1.648	2.418
87.0	1.523	2.265
90.0	1.405	2.127
93.0	1.295	1.981
96.0	1.198	1.843
99.0	1.059	1.704
102.0	0.9417	1.579
105.0	0.8447	1.420
108.0	0.7894	1.289
111.0	0.7409	1.171
114.0	0.6921	1.067
117.0	0.5674	0.9837
120.0	0.4984	0.9006
123.0	0.4155	0.8451
126.0	0.3807	0.7897
129.0	0.3043	0.7067
132.0	0.2491	0.6719
135.0	0.2145	0.5475
138.0	0.1801	0.4987
141.0	0.1802	0.4435
144.0	0.1384	0.3880
147.0	0.0968	0.2979
150.0	0.0829	0.2909
153.0	0.0554	0.2426
156.0	0.0554	0.2286
159.0	0.0554	0.1940
162.0	0.0553	0.1663
165.0	0.0485	0.1316
168.0	0.0762	0.1109
171.0	0.0762	0.0970
174.0	0.0760	0.0831
177.0	0.0623	0.0831
180.0	0.0623	0.0693

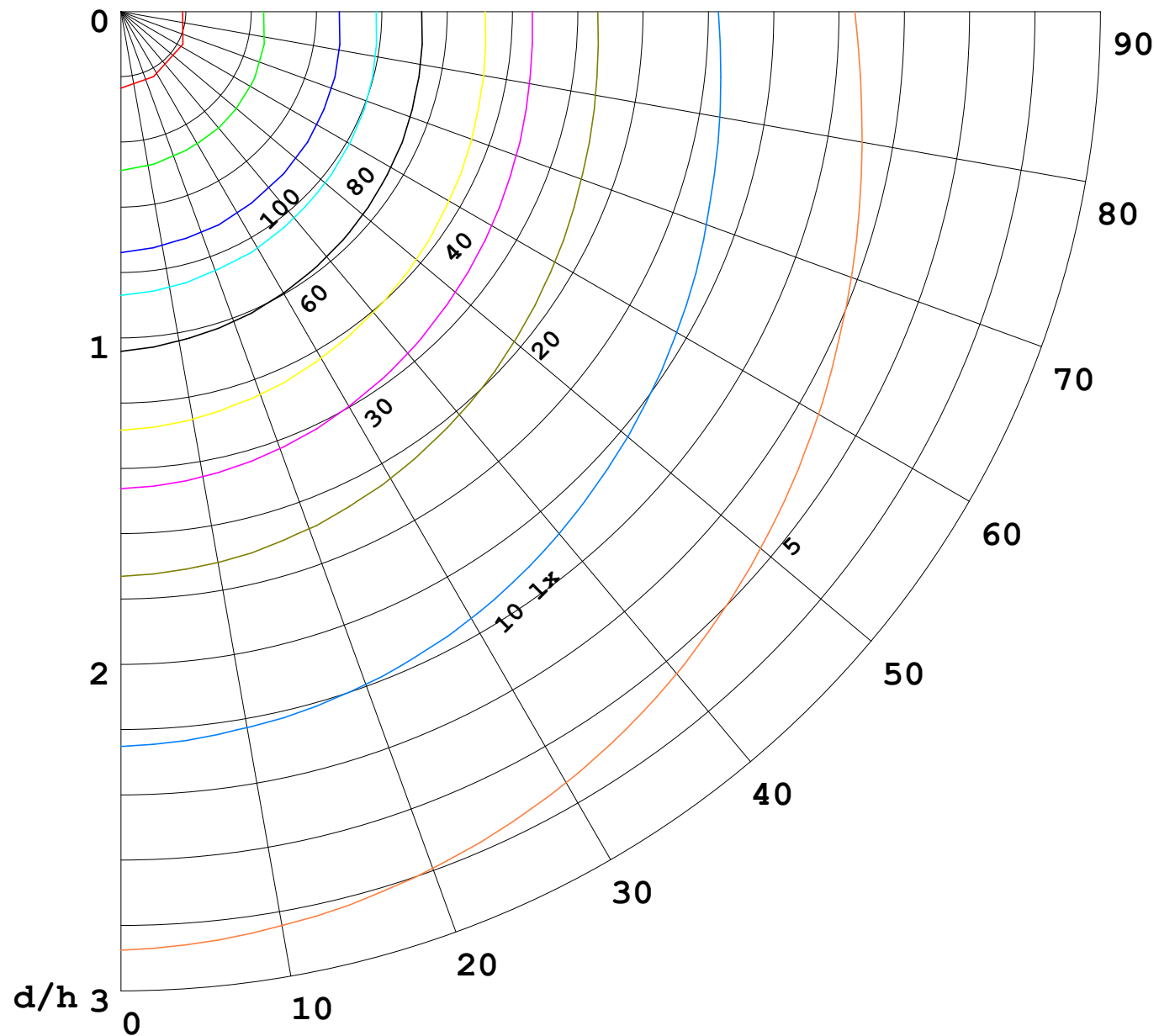
C Range: 0 - 360DEG
C Interval: 30.0DEG
Test Speed: HIGH
Temperature:25.3DEG
Operators:WFW
Test Date:2023-03-04

γ Range: 0 - 180DEG
γ Interval: 1.0DEG
Test System:EVERFINE GO-2000B_V1 SYSTEM V2.0.269
Humidity:65.0%
Test Distance:10.800m [K=1.0000]
Remarks:



1000 lm

$\kappa = 1$



F = 5000 lm
 K = 0.7
 Hcc = 0.0 m
 Hfc = 0.0 m
 Eave = 100 lx

	Pcc	Pw	Pfc
—	70	50	30
—	50	30	20

