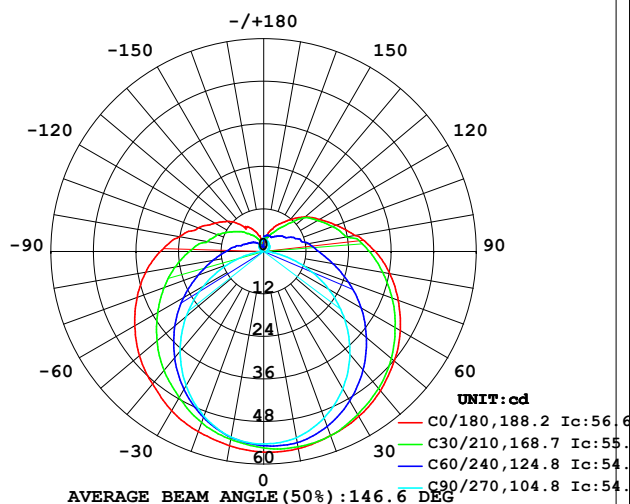


## LUMINAIRE PHOTOMETRIC TEST REPORT

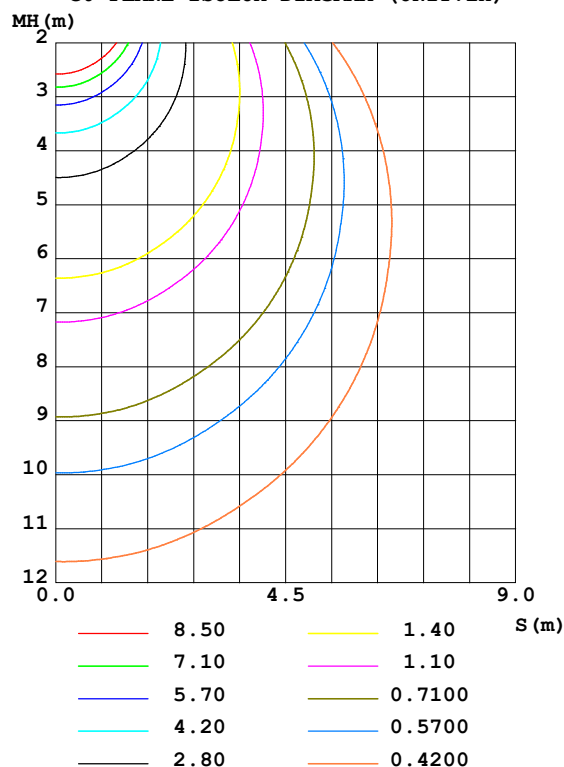
Test:U:24.00V I:0.8385A P:20.12W PF:1.000 Freq:50.00Hz Lamp Flux:277.492x1 lm		
NAME: SF21-24V-5050-70-DMX4-RGBW(2700)	TYPE: 硅胶	WEIGHT:
SPEC.:	DIM.: 28mm*11.5mm	SERIAL No.:2021121606
MFR.: OLYMPIA	SUR.:1*0.016	Shielding Angle:

DATA OF LAMP		PHOTOMETRIC DATA Eff: 13.79 lm/W			
MODEL	5050	I <sub>max</sub> (cd)	56.68	S/MH (C0/180)	1.37
NOMINAL POWER (W)	18	LOR (%)	100.0	S/MH (C90/270)	1.20
RATED VOLTAGE (V)	24	TOTAL FLUX (lm)	277.49	η UP, DN (C0-180)	11.6, 38.8
NOMINAL FLUX (lm)	277.492	CIE CLASS	SEMI-D.	η UP, DN (C180-360)	11.3, 38.2
LAMPS INSIDE	1	η up (%)	23.0	CIBSE SHR NOM	1.50
TEST VOLTAGE (V)	24	η down (%)	77.0	CIBSE SHR MAX	1.55

LUMINOUS INTENSITY DISTRIBUTION DIAGRAM



C0 PLANE ISOLUX DIAGRAM (UNIT: lx)



C Range: 0 - 360DEG  
C Interval: 30.0DEG  
Test Speed: HIGH  
Temperature: 25.3DEG  
Operators: LPC  
Test Date: 2021-12-16

γ Range: 0 - 180DEG  
γ Interval: 1.0DEG  
Test System: EVERFINE GO-2000B\_V1 SYSTEM V2.0.362  
Humidity: 65.0%  
Test Distance: 9.200m [K=1.0000]  
Remarks:

## ZONAL FLUX DIAGRAM

## ZONAL FLUX DIAGRAM:

$\gamma$	C0	C45	C90	C135	C180	C225	C270	C315	$\gamma$	$\Phi$ zone	$\Phi$ total	%lum, lamp
10	56.48	55.36	53.37	52.54	55.64	53.52	53.15	54.28	0- 10	5.204	5.204	1.88,1.88
20	55.26	53.91	49.94	49.67	54.06	50.57	49.38	52.72	10- 20	15.03	20.23	7.29,7.29
30	53.75	50.85	44.71	45.45	51.89	46.30	43.76	49.88	20- 30	23.16	43.39	15.6,15.6
40	51.28	47.03	37.81	40.66	48.80	41.44	36.69	46.28	30- 40	28.89	72.28	26,26
50	48.11	42.42	29.87	35.30	45.77	36.03	28.54	41.93	40- 50	31.90	104.2	37.5,37.5
60	44.50	37.28	21.13	29.71	42.01	30.31	19.68	36.95	50- 60	32.11	136.3	49.1,49.1
70	40.40	32.02	12.10	24.29	38.01	24.80	10.86	31.87	60- 70	29.87	166.1	59.9,59.9
80	36.14	26.96	3.945	19.52	33.80	19.94	3.121	26.92	70- 80	25.97	192.1	69.2,69.2
90	31.51	22.68	0.8192	15.59	29.15	15.85	0.6134	22.69	80- 90	21.61	213.7	77,77
100	26.14	18.24	0.9051	12.18	24.11	12.20	0.7133	18.35	90-100	17.92	231.6	83.5,83.5
110	21.80	15.58	1.221	9.862	19.65	9.971	0.7536	15.57	100-110	13.99	245.6	88.5,88.5
120	18.17	12.81	1.599	7.792	15.97	7.959	1.150	13.05	110-120	10.93	256.6	92.5,92.5
130	15.17	10.83	1.965	6.374	13.21	6.383	1.588	11.05	120-130	8.283	264.9	95.4,95.4
140	11.74	7.703	2.252	4.857	9.623	4.953	1.980	7.849	130-140	5.768	270.6	97.5,97.5
150	9.008	5.721	2.629	3.450	7.767	3.579	2.407	6.094	140-150	3.541	274.2	98.8,98.8
160	6.630	4.771	3.086	2.271	5.531	2.462	2.884	5.045	150-160	2.067	276.2	99.5,99.5
170	2.861	4.338	3.488	1.339	2.371	1.353	3.387	4.634	160-170	0.9859	277.2	99.9,99.9
180	1.372	2.111	3.664	3.234	1.382	1.902	3.794	3.269	170-180	0.2739	277.5	100,100
DEG	LUMINOUS INTENSITY:cd									UNIT:lm		

Conical surface Flux(90deg): 88.028 lm

%lum = 31.7%

%lamp = 31.7%

Conical surface Flux(120deg): 136.28 lm

%lum = 49.1%

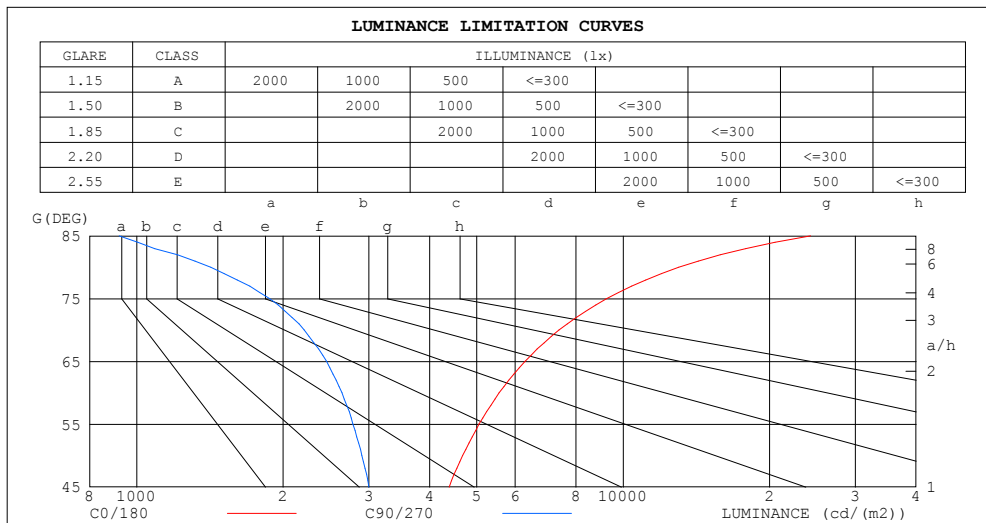
%lamp = 49.1%

C Range: 0 - 360DEG  
 C Interval: 30.0DEG  
 Test Speed: HIGH  
 Temperature:25.3DEG  
 Operators:LPC  
 Test Date:2021-12-16

$\gamma$  Range: 0 - 180DEG  
 $\gamma$  Interval: 1.0DEG  
 Test System:EVERFINE GO-2000B\_V1 SYSTEM V2.0.362  
 Humidity:65.0%  
 Test Distance:9.200m [K=1.0000]  
 Remarks:

## LUMINANCE LIMITATION CURVES

Test:U:24.00V I:0.8385A P:20.12W PF:1.000 Freq:50.00Hz Lamp Flux:277.492x1 lm		
NAME: SF21-24V-5050-70-DMX4-RGBW(2700)	TYPE: 硅胶	WEIGHT:
SPEC.:	DIM.: 28mm*11.5mm	SERIAL No.:2021121606
MFR.: OLYMPIA	SUR.:1*0.016	Shielding Angle:



LUMINANCE cd/(m2)		
G (DEG)	C0/180	C90/270
85	24284	920
80	13008	1420
75	9250	1876
70	7382	2211
65	6281	2456
60	5562	2641
55	5057	2781
50	4678	2904
45	4389	3001

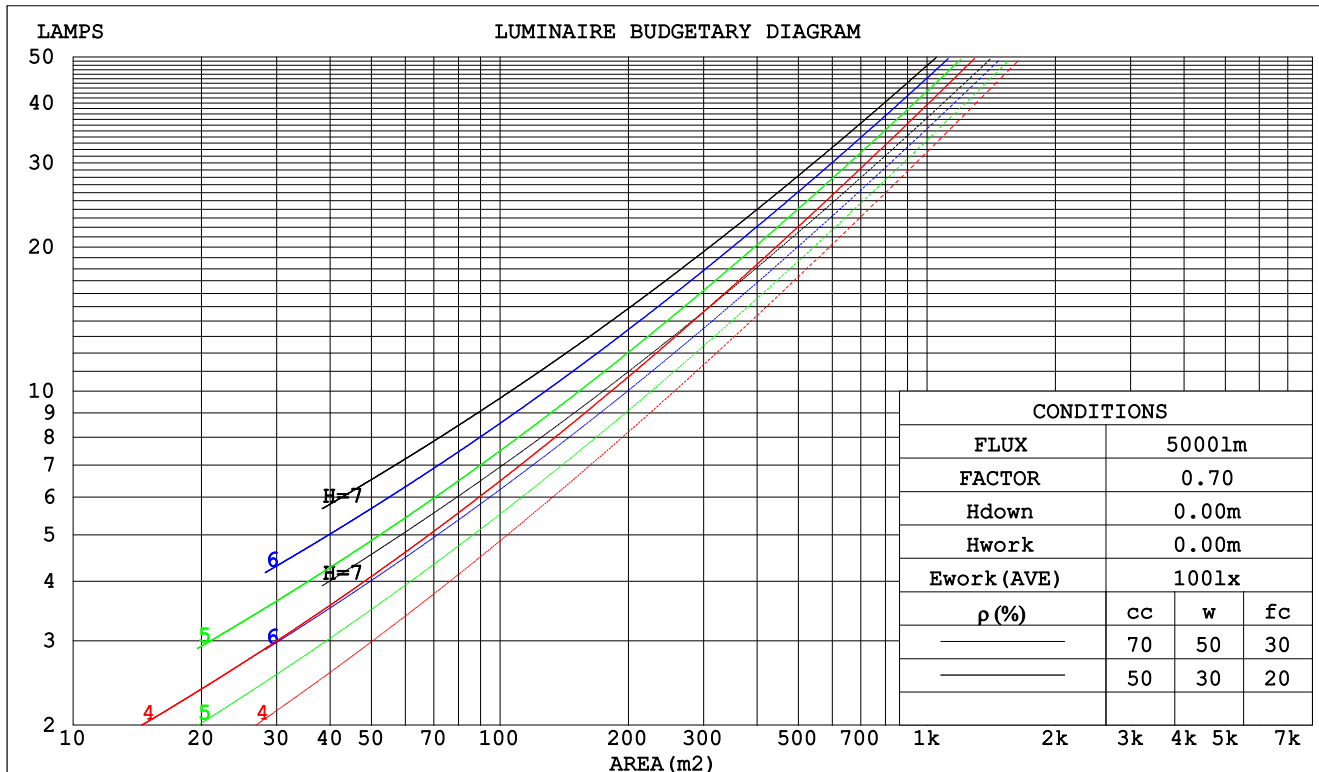
C Range: 0 - 360DEG  
C Interval: 30.0DEG  
Test Speed: HIGH  
Temperature:25.3DEG  
Operators:LPC  
Test Date:2021-12-16

$\gamma$  Range: 0 - 180DEG  
 $\gamma$  Interval: 1.0DEG  
Test System:EVERFINE GO-2000B\_V1 SYSTEM V2.0.362  
Humidity:65.0%  
Test Distance:9.200m [K=1.0000]  
Remarks:

## CU AND LUMINAIRE BUDGETARY ESTIMATE DIAGRAM

Test:U:24.00V I:0.8385A P:20.12W PF:1.000 Freq:50.00Hz Lamp Flux:277.492x1 lm		
NAME: SF21-24V-5050-70-DMX4-RGBW(2700)	TYPE: 硅胶	WEIGHT:
SPEC.:	DIM.: 28mm*11.5mm	SERIAL No.:2021121606
MFR.: OLYMPIA	SUR.:1*0.016	Shielding Angle:

pcc	80%			70%			50%			30%			10%			0
pw	50%	30%	10%	50%	30%	10%	50%	30%	10%	50%	30%	10%	50%	30%	10%	0
pfc	20%			20%			20%			20%			20%			0
RCR	RCR:Room Cavity Ratio						Coefficients of Utilization(CU)									
0.0	1.14	1.14	1.14	1.08	1.08	1.08	.98	.98	.98	.89	.89	.89	.81	.81	.81	.77
1.0	.94	.89	.84	.90	.85	.80	.81	.77	.74	.73	.70	.67	.66	.64	.61	.58
2.0	.81	.73	.66	.77	.69	.63	.69	.63	.58	.62	.58	.54	.56	.52	.49	.46
3.0	.70	.61	.54	.66	.58	.52	.60	.53	.48	.54	.49	.44	.49	.44	.40	.37
4.0	.61	.52	.45	.58	.50	.43	.53	.46	.40	.48	.42	.37	.43	.38	.34	.31
5.0	.54	.45	.38	.52	.43	.37	.47	.40	.34	.43	.36	.32	.38	.33	.29	.26
6.0	.49	.39	.33	.46	.38	.32	.42	.35	.29	.38	.32	.27	.35	.29	.25	.23
7.0	.44	.35	.28	.42	.33	.28	.38	.31	.26	.35	.29	.24	.32	.26	.22	.20
8.0	.40	.31	.25	.38	.30	.24	.35	.28	.23	.32	.26	.21	.29	.24	.20	.18
9.0	.36	.28	.22	.35	.27	.22	.32	.25	.20	.29	.23	.19	.27	.22	.18	.16
10.0	.33	.25	.20	.32	.25	.19	.29	.23	.18	.27	.21	.17	.25	.20	.16	.14



C Range: 0 - 360DEG  
 C Interval: 30.0DEG  
 Test Speed: HIGH  
 Temperature:25.3DEG  
 Operators:LPC  
 Test Date:2021-12-16

γ Range: 0 - 180DEG  
 γ Interval: 1.0DEG  
 Test System:EVERFINE GO-2000B\_V1 SYSTEM V2.0.362  
 Humidity:65.0%  
 Test Distance:9.200m [K=1.0000]  
 Remarks:

## WEC AND CCEC

Test:U:24.00V I:0.8385A P:20.12W PF:1.000 Freq:50.00Hz Lamp Flux:277.492x1 lm		
NAME: SF21-24V-5050-70-DMX4-RGBW(2700)	TYPE: 硅胶	WEIGHT:
SPEC.:	DIM.: 28mm*11.5mm	SERIAL No.:2021121606
MFR.: OLYMPIA	SUR.:1*0.016	Shielding Angle:

pcc	80%			70%			50%			30%			10%			0	
pw	50%	30%	10%	50%	30%	10%	50%	30%	10%	50%	30%	10%	50%	30%	10%	0	
pfc	20%			20%			20%			20%			20%			0	
RCR	RCR:Room Cavity Ratio						Wall Exitance Coefficients(WEC)										
0.0																	
1.0	.388	.221	.070	.374	.213	.068	.347	.199	.064	.322	.186	.060	.300	.174	.056		
2.0	.334	.183	.056	.321	.177	.054	.297	.165	.051	.274	.154	.048	.254	.144	.045		
3.0	.296	.157	.047	.284	.152	.046	.262	.142	.043	.242	.132	.041	.223	.123	.038		
4.0	.266	.138	.041	.255	.133	.039	.235	.125	.037	.217	.116	.035	.199	.108	.033		
5.0	.241	.123	.036	.232	.119	.035	.213	.111	.033	.197	.104	.031	.181	.097	.029		
6.0	.221	.111	.032	.212	.107	.031	.196	.100	.029	.180	.094	.027	.166	.087	.026		
7.0	.204	.101	.029	.196	.097	.028	.180	.091	.026	.166	.085	.025	.153	.079	.023		
8.0	.189	.092	.026	.181	.089	.025	.167	.084	.024	.154	.078	.023	.142	.073	.021		
9.0	.176	.085	.024	.169	.082	.023	.156	.077	.022	.144	.072	.021	.132	.067	.019		
10.0	.165	.079	.022	.158	.076	.021	.146	.072	.020	.135	.067	.019	.124	.062	.018		

pcc	80%			70%			50%			30%			10%			0
pw	50%	30%	10%	50%	30%	10%	50%	30%	10%	50%	30%	10%	50%	30%	10%	0
pfc	20%			20%			20%			20%			20%			0
RCR	RCR:Room Cavity Ratio						Ceiling Cavity Exitance Coefficients(CCEC)									
0.0	.366	.366	.366	.312	.312	.312	.213	.213	.213	.123	.123	.123	.039	.039	.039	
1.0	.362	.332	.305	.310	.285	.262	.212	.196	.181	.122	.113	.105	.039	.037	.034	
2.0	.356	.309	.271	.305	.266	.234	.209	.184	.163	.120	.107	.096	.039	.035	.031	
3.0	.348	.293	.249	.298	.253	.216	.205	.176	.152	.118	.103	.089	.038	.033	.029	
4.0	.340	.281	.235	.292	.243	.204	.201	.169	.144	.116	.099	.085	.037	.032	.028	
5.0	.333	.271	.226	.286	.235	.196	.197	.164	.139	.114	.096	.082	.037	.031	.027	
6.0	.325	.263	.219	.280	.228	.190	.193	.160	.135	.112	.094	.080	.036	.031	.026	
7.0	.318	.257	.214	.274	.223	.186	.189	.156	.132	.110	.092	.079	.036	.030	.026	
8.0	.312	.251	.210	.268	.218	.183	.186	.153	.130	.108	.090	.077	.035	.030	.026	
9.0	.305	.247	.207	.263	.214	.180	.182	.150	.128	.106	.089	.076	.034	.029	.025	
10.0	.300	.242	.204	.258	.210	.178	.179	.148	.127	.105	.088	.076	.034	.029	.025	

C Range: 0 - 360DEG  
 C Interval: 30.0DEG  
 Test Speed: HIGH  
 Temperature:25.3DEG  
 Operators:LPC  
 Test Date:2021-12-16

γ Range: 0 - 180DEG  
 γ Interval: 1.0DEG  
 Test System:EVERFINE GO-2000B\_V1 SYSTEM V2.0.362  
 Humidity:65.0%  
 Test Distance:9.200m [K=1.0000]  
 Remarks:

UGR(Unified Glare Rating) Table

Test:U:24.00V I:0.8385A P:20.12W PF:1.000 Freq:50.00Hz Lamp Flux:277.492x1 lm										
NAME: SF21-24V-5050-70-DMX4-RGBW(2700)					TYPE: 硅胶			WEIGHT:		
SPEC.:					DIM.: 28mm*11.5mm			SERIAL No.:2021121606		
MFR.: OLYMPIA					SUR.:1*0.016			Shielding Angle:		
ceiling/cavity	0.7	0.7	0.5	0.5	0.3	0.7	0.7	0.5	0.5	0.3
walls	0.5	0.3	0.5	0.3	0.3	0.5	0.3	0.5	0.3	0.3
working plane	0.2	0.2	0.2	0.2	0.2	0.2	0.2	0.2	0.2	0.2
Room dimensions	Viewed crosswise					Viewed endwise				
x = 2H y = 2H	22.4	23.7	22.9	24.3	24.9	19.6	20.9	20.2	21.5	22.2
3H	25.2	26.4	25.8	27.0	27.7	21.1	22.3	21.7	22.9	23.6
4H	26.7	27.9	27.4	28.5	29.2	21.6	22.8	22.3	23.4	24.1
6H	28.5	29.6	29.1	30.2	30.9	22.0	23.1	22.6	23.7	24.5
8H	29.4	30.5	30.1	31.1	31.9	22.1	23.1	22.7	23.8	24.5
12H	30.5	31.6	31.2	32.2	33.0	22.1	23.1	22.8	23.8	24.6
4H 2H	23.0	24.1	23.6	24.7	25.5	21.1	22.2	21.7	22.8	23.6
3H	26.1	27.1	26.7	27.7	28.5	22.9	23.9	23.5	24.5	25.3
4H	27.8	28.8	28.5	29.4	30.2	23.7	24.6	24.4	25.3	26.1
6H	29.8	30.6	30.5	31.3	32.1	24.3	25.1	25.0	25.8	26.7
8H	30.9	31.6	31.6	32.3	33.2	24.5	25.3	25.2	26.0	26.9
12H	32.1	32.8	32.8	33.5	34.4	24.6	25.4	25.4	26.1	27.0
8H 4H	28.2	29.0	28.9	29.7	30.6	25.1	25.8	25.8	26.6	27.4
6H	30.5	31.2	31.2	31.9	32.8	26.2	26.8	26.9	27.6	28.5
8H	31.8	32.4	32.6	33.2	34.1	26.7	27.2	27.4	28.0	28.9
12H	33.3	33.8	34.1	34.6	35.5	27.1	27.6	27.8	28.3	29.3
12H 4H	28.2	28.9	29.0	29.7	30.6	25.5	26.2	26.3	27.0	27.8
6H	30.6	31.2	31.4	32.0	32.9	26.9	27.5	27.7	28.3	29.2
8H	32.1	32.6	32.9	33.4	34.3	27.6	28.1	28.4	28.9	29.9
Variations with the observer position at spacings:										
S = 1.0H	+ 0.1 / - 0.1					+ 0.1 / - 0.1				
1.5H	+ 0.2 / - 0.3					+ 0.2 / - 0.3				
2.0H	+ 0.3 / - 0.4					+ 0.3 / - 0.4				

CIE Pub.117, 277.5 lm Total Lamp Luminous Flux Correct (8log(F/F0) = -4.5)

C Range: 0 - 360DEG  
 C Interval: 30.0DEG  
 Test Speed: HIGH  
 Temperature:25.3DEG  
 Operators:LPC  
 Test Date:2021-12-16

γ Range: 0 - 180DEG  
 γ Interval: 1.0DEG  
 Test System:EVERFINE GO-2000B\_V1 SYSTEM V2.0.362  
 Humidity:65.0%  
 Test Distance:9.200m [K=1.0000]  
 Remarks:

### UTILIZATION FACTORS TABLE

Test:U:24.00V I:0.8385A P:20.12W PF:1.000 Freq:50.00Hz Lamp Flux:277.492x1 lm		
NAME: SF21-24V-5050-70-DMX4-RGBW(2700)	TYPE: 硅胶	WEIGHT:
SPEC.:	DIM.: 28mm*11.5mm	SERIAL No.:2021121606
MFR.: OLYMPIA	SUR.:1*0.016	Shielding Angle:

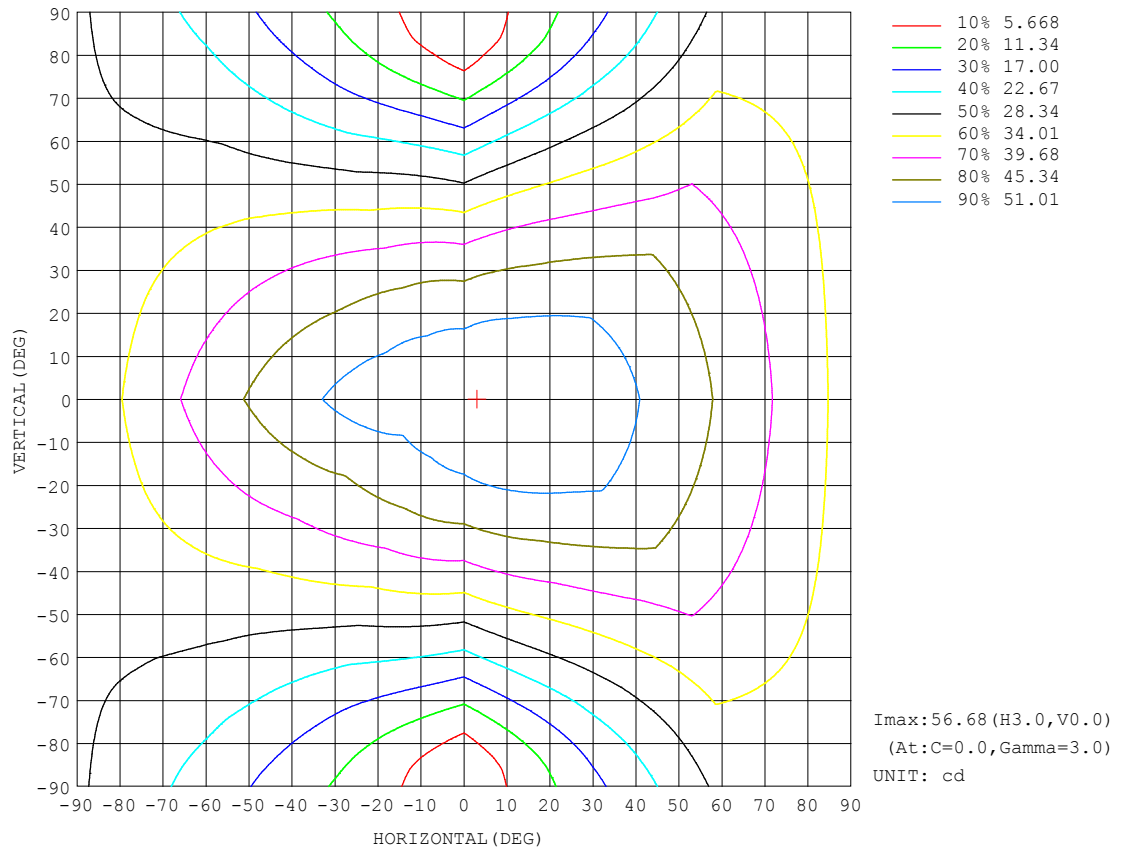
REFLECTANCE										
Ceiling	0.8	0.8	0.8	0.7	0.7	0.7	0.5	0.5	0.5	0
Walls	0.7	0.5	0.3	0.7	0.5	0.3	0.7	0.5	0.3	0
Working plane	0.2	0.2	0.2	0.2	0.2	0.2	0.2	0.2	0.2	0
ROOM INDEX	UTILIZATION FACTORS (PERCENT) $k(RI) \times RCR = 5$									
$k = 0.60$	46	34	26	45	33	26	43	32	26	19
0.80	55	42	34	53	41	33	50	40	32	24
1.00	63	50	41	61	48	40	57	49	39	30
1.25	70	57	48	67	55	47	62	52	45	35
1.50	75	62	54	72	60	52	66	57	50	39
2.00	82	71	62	79	68	61	72	64	57	45
2.50	87	76	68	83	73	66	76	68	62	48
3.00	90	81	73	86	78	71	79	72	66	52
4.00	95	87	80	91	84	77	83	77	72	56
5.00	98	91	85	94	87	82	85	80	76	59
ROOM INDEX	UF (total)									Direct
According to DIN EN 13032-2 2004			Suspended					SHRNOM = 1.25		

C Range: 0 - 360DEG  
C Interval: 30.0DEG  
Test Speed: HIGH  
Temperature:25.3DEG  
Operators:LPC  
Test Date:2021-12-16

$\gamma$  Range: 0 - 180DEG  
 $\gamma$  Interval: 1.0DEG  
Test System:EVERFINE GO-2000B\_V1 SYSTEM V2.0.362  
Humidity:65.0%  
Test Distance:9.200m [K=1.0000]  
Remarks:

## ISOCANDELA DIAGRAM

Test:U:24.00V I:0.8385A P:20.12W PF:1.000 Freq:50.00Hz Lamp Flux:277.492x1 lm		
NAME: SF21-24V-5050-70-DMX4-RGBW(2700)	TYPE: 硅胶	WEIGHT:
SPEC.:	DIM.: 28mm*11.5mm	SERIAL No.:2021121606
MFR.: OLYMPIA	SUR.:1*0.016	Shielding Angle:



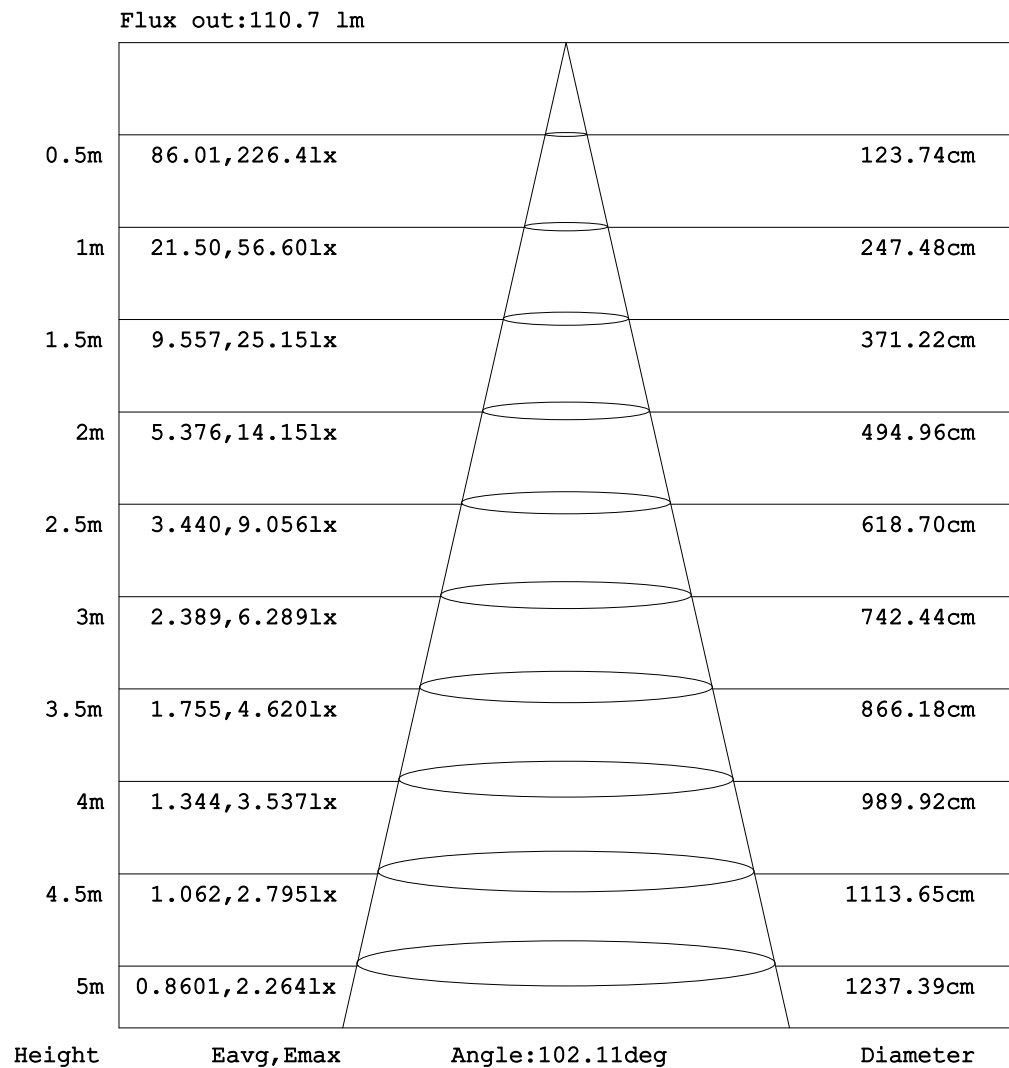
C Range: 0 - 360DEG  
C Interval: 30.0DEG  
Test Speed: HIGH  
Temperature:25.3DEG  
Operators:LPC  
Test Date:2021-12-16

$\gamma$  Range: 0 - 180DEG  
 $\gamma$  Interval: 1.0DEG  
Test System:EVERFINE GO-2000B\_V1 SYSTEM V2.0.362  
Humidity:65.0%  
Test Distance:9.200m [K=1.0000]  
Remarks:



## AAI Figure

Test:U:24.00V I:0.8385A P:20.12W PF:1.000 Freq:50.00Hz Lamp Flux:277.492x1 lm		
NAME: SF21-24V-5050-70-DMX4-RGBW(2700)	TYPE: 硅胶	WEIGHT:
SPEC.:	DIM.: 28mm*11.5mm	SERIAL No.:2021121606
MFR.: OLYMPIA	SUR.:1*0.016	Shielding Angle:



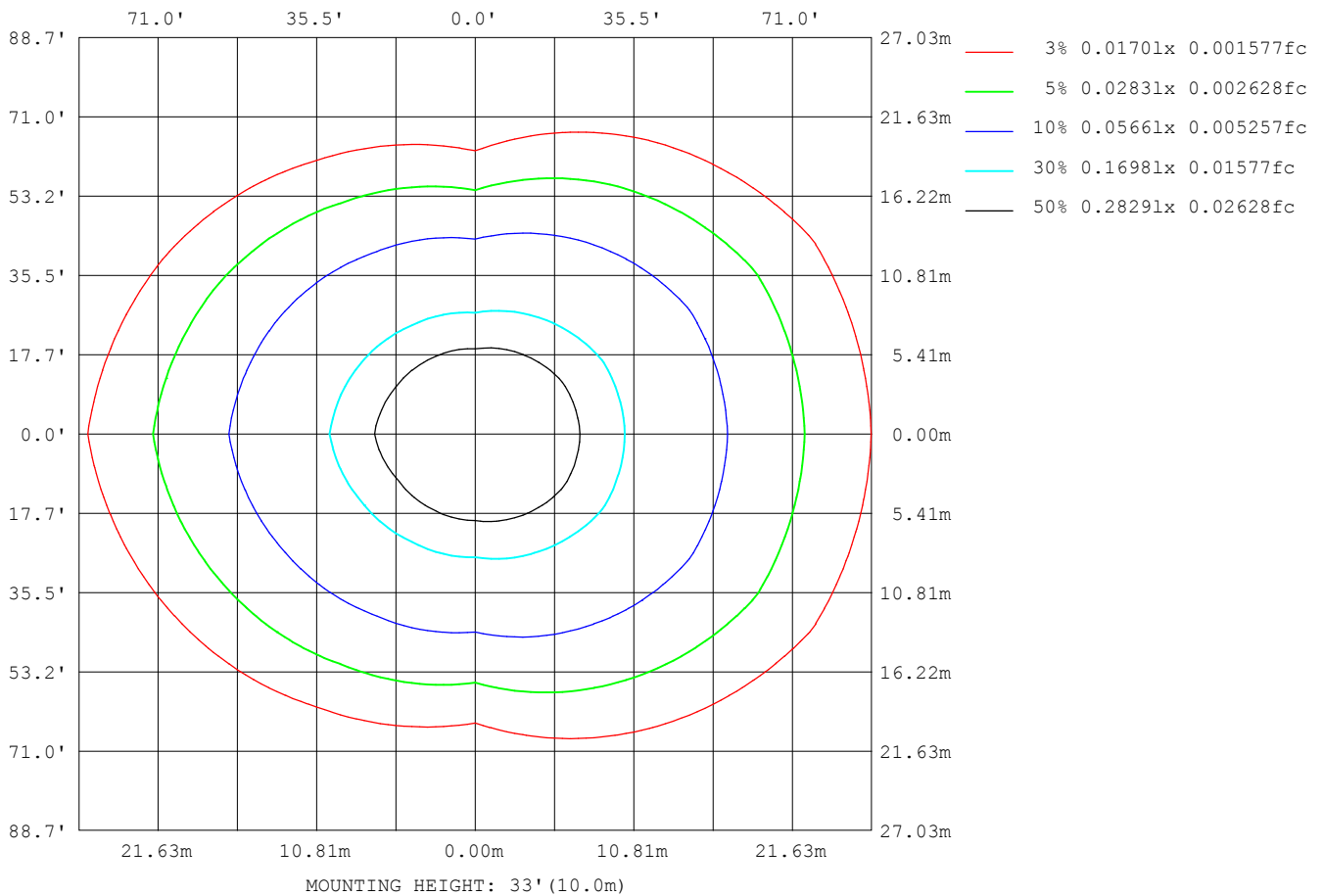
Note: The Curves indicate the illuminated area and the average illumination when the luminaire is at different distance.

C Range: 0 - 360DEG  
 C Interval: 30.0DEG  
 Test Speed: HIGH  
 Temperature: 25.3DEG  
 Operators: LPC  
 Test Date: 2021-12-16

$\gamma$  Range: 0 - 180DEG  
 $\gamma$  Interval: 1.0DEG  
 Test System: EVERFINE GO-2000B\_V1 SYSTEM V2.0.362  
 Humidity: 65.0%  
 Test Distance: 9.200m [K=1.0000]  
 Remarks:

## ISOLUX DIAGRAM

Test:U:24.00V I:0.8385A P:20.12W PF:1.000 Freq:50.00Hz Lamp Flux:277.492x1 lm		
NAME: SF21-24V-5050-70-DMX4-RGBW(2700)	TYPE: 硅胶	WEIGHT:
SPEC.:	DIM.: 28mm*11.5mm	SERIAL No.:2021121606
MFR.: OLYMPIA	SUR.:1*0.016	Shielding Angle:



C Range: 0 - 360DEG  
C Interval: 30.0DEG  
Test Speed: HIGH  
Temperature:25.3DEG  
Operators:LPC  
Test Date:2021-12-16

$\gamma$  Range: 0 - 180DEG  
 $\gamma$  Interval: 1.0DEG  
Test System:EVERFINE GO-2000B\_V1 SYSTEM V2.0.362  
Humidity:65.0%  
Test Distance:9.200m [K=1.0000]  
Remarks:

## LED Avg.L Report

Test:U:24.00V I:0.8385A P:20.12W PF:1.000 Freq:50.00Hz Lamp Flux:277.492x1 lm		
NAME: SF21-24V-5050-70-DMX4-RGBW(2700)	TYPE:硅胶	WEIGHT:
SPEC.:	DIM.: 28mm*11.5mm	SERIAL No.:2021121606
MFR.: OLYMPIA	SUR.:1*0.016	Shielding Angle:

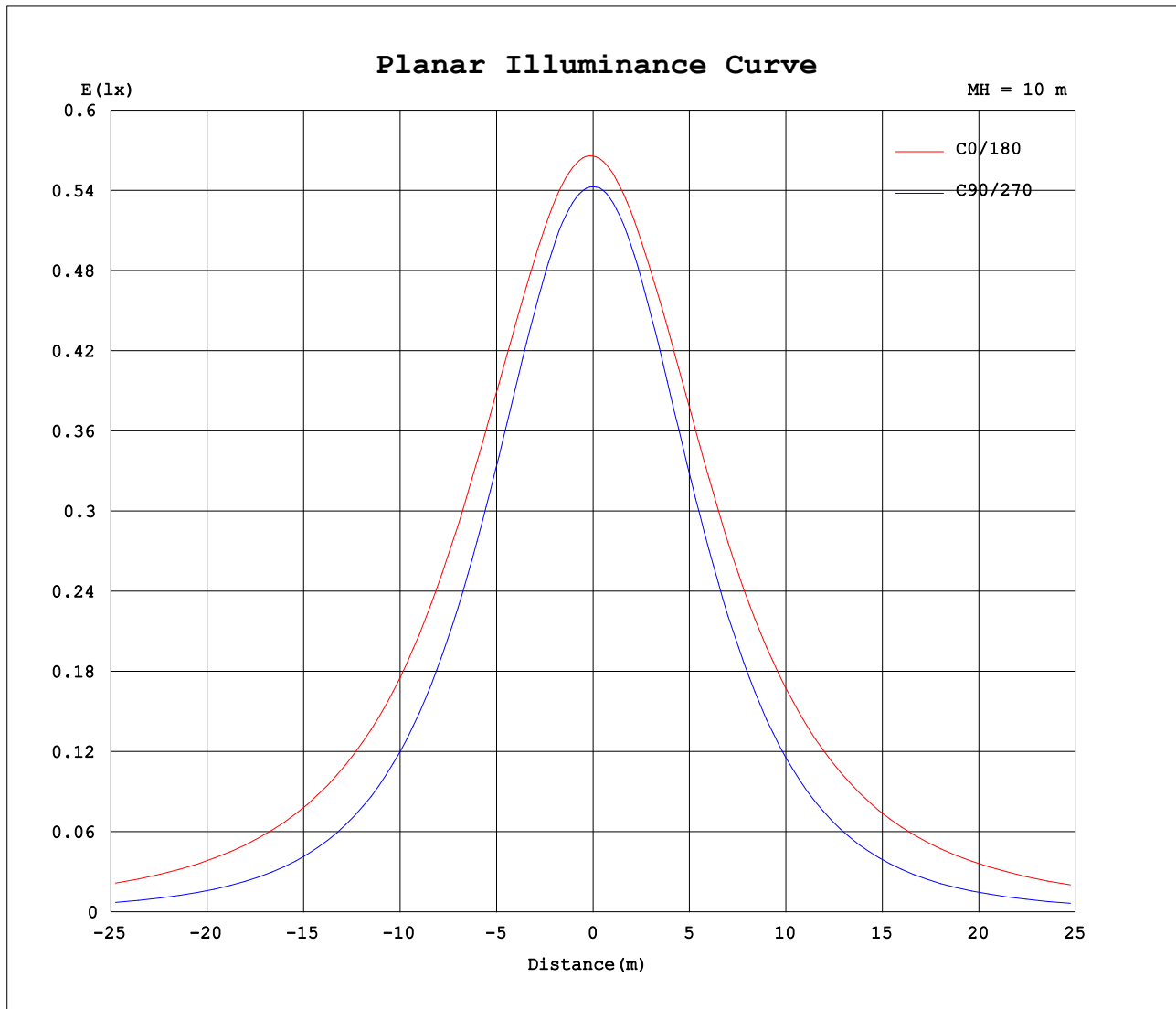
AvgL	cd/m2
L_0~180(65)av	6101
L_0~180(75)av	8966
L_0~180(85)av	23453
L_90~270(65)av	2354
L_90~270(75)av	1744
L_90~270(85)av	742
L_45(65)av	4610
L_45(75)av	6318
L_45(85)av	15540

Standard: GB/T 29293-2012

C Range: 0 - 360DEG  
C Interval: 30.0DEG  
Test Speed: HIGH  
Temperature:25.3DEG  
Operators:LPC  
Test Date:2021-12-16

γ Range: 0 - 180DEG  
γ Interval: 1.0DEG  
Test System:EVERFINE GO-2000B\_V1 SYSTEM V2.0.362  
Humidity:65.0%  
Test Distance:9.200m [K=1.0000]  
Remarks:

## Planar Illuminance Curve



C Range: 0 - 360DEG  
C Interval: 30.0DEG  
Test Speed: HIGH  
Temperature: 25.3DEG  
Operators: LPC  
Test Date: 2021-12-16

$\gamma$  Range: 0 - 180DEG  
 $\gamma$  Interval: 1.0DEG  
Test System: EVERFINE GO-2000B\_V1 SYSTEM V2.0.362  
Humidity: 65.0%  
Test Distance: 9.200m [K=1.0000]  
Remarks:

## LUMINOUS DISTRIBUTION INTENSITY DATA

Test:U:24.00V I:0.8385A P:20.12W PF:1.000 Freq:50.00Hz Lamp Flux:277.492x1 lm		
NAME: SF21-24V-5050-70-DMX4-RGBW(2700)	TYPE: 硅胶	WEIGHT:
SPEC.:	DIM.: 28mm*11.5mm	SERIAL No.:2021121606
MFR.: OLYMPIA	SUR.:1*0.016	Shielding Angle:

Table--1

UNIT: cd

C (DEG) γ (DEG)	0	30	60	90	120	150	180	210	240	270	300	330						
0	56.6	55.4	54.8	54.3	54.1	53.9	56.6	55.4	54.8	54.3	54.1	53.9						
5	56.7	55.9	54.9	54.1	53.6	53.2	56.2	54.7	54.2	54.1	54.2	54.5						
10	56.5	56.0	54.8	53.4	52.7	52.4	55.6	53.8	53.2	53.1	53.9	54.6						
15	55.9	55.8	53.9	51.9	51.2	51.4	54.8	52.8	51.7	51.5	53.0	54.5						
20	55.3	55.3	52.5	49.9	49.3	50.0	54.1	51.4	49.8	49.4	51.5	53.9						
25	54.6	54.3	50.8	47.5	47.1	48.2	53.1	49.6	47.5	46.8	49.6	53.2						
30	53.8	53.1	48.6	44.7	44.6	46.3	51.9	47.7	44.9	43.8	47.6	52.2						
35	52.6	51.8	46.2	41.4	41.9	44.5	50.4	45.7	42.1	40.3	45.4	50.9						
40	51.3	50.4	43.6	37.8	38.8	42.5	48.8	43.8	39.1	36.7	43.0	49.6						
45	49.7	48.8	40.8	34.0	35.7	40.3	47.4	41.6	35.9	32.7	40.3	48.1						
50	48.1	47.0	37.8	29.9	32.6	38.0	45.8	39.3	32.8	28.5	37.4	46.5						
55	46.4	45.0	34.8	25.5	29.3	35.7	43.9	36.9	29.5	24.2	34.4	44.6						
60	44.5	42.8	31.8	21.1	26.0	33.4	42.0	34.5	26.1	19.7	31.4	42.5						
65	42.5	40.8	28.6	16.6	22.7	31.2	40.0	32.2	22.8	15.2	28.3	40.6						
70	40.4	38.6	25.5	12.1	19.6	28.9	38.0	29.9	19.7	10.9	25.2	38.5						
75	38.3	36.3	22.5	7.77	16.9	26.7	36.0	27.7	16.9	6.68	22.3	36.4						
80	36.1	34.1	19.8	3.94	14.6	24.5	33.8	25.4	14.5	3.12	19.6	34.3						
85	33.9	32.0	17.4	1.28	12.5	22.3	31.5	23.1	12.4	0.79	17.2	32.2						
90	31.5	29.8	15.6	0.82	10.9	20.3	29.1	21.0	10.7	0.61	15.3	30.1						
95	29.0	27.8	14.1	0.85	9.68	18.5	26.9	19.1	9.46	0.61	13.8	28.1						
100	26.1	23.5	13.0	0.91	8.77	15.6	24.1	16.2	8.22	0.71	12.6	24.1						
105	23.9	22.3	11.1	1.09	6.64	14.7	22.0	14.9	6.59	0.73	10.8	22.7						
110	21.8	20.7	10.5	1.22	6.20	13.5	19.6	14.0	5.94	0.75	10.1	21.1						
115	19.9	19.1	9.42	1.42	5.53	11.6	17.5	12.4	5.28	0.92	9.10	19.1						
120	18.2	17.6	8.02	1.60	5.09	10.5	16.0	11.1	4.86	1.15	8.46	17.6						
125	16.7	16.3	7.13	1.79	4.67	9.52	14.5	9.85	4.42	1.39	7.82	16.3						
130	15.2	14.8	6.82	1.97	4.26	8.49	13.2	8.75	4.02	1.59	7.29	14.8						
135	13.5	12.1	6.20	2.13	3.82	7.36	11.6	7.70	3.68	1.80	6.73	12.6						
140	11.7	9.77	5.64	2.25	3.41	6.30	9.62	6.63	3.28	1.98	5.92	9.77						
145	10.2	8.11	5.15	2.34	2.83	5.30	8.50	5.69	2.82	2.15	5.36	8.55						
150	9.01	6.76	4.68	2.63	2.27	4.63	7.77	4.87	2.29	2.41	4.79	7.39						
155	7.92	5.69	4.65	2.86	1.98	3.74	6.65	3.96	1.75	2.65	4.73	6.35						
160	6.63	4.81	4.73	3.09	1.84	2.70	5.53	3.16	1.76	2.88	4.87	5.22						
165	5.52	4.12	4.74	3.31	1.37	2.01	4.58	2.22	1.32	3.14	4.87	4.37						
170	2.86	4.06	4.62	3.49	1.36	1.32	2.37	1.38	1.32	3.39	4.80	4.46						
175	2.35	3.81	4.38	3.61	1.33	1.31	1.81	1.38	1.33	3.62	4.66	4.37						
180	1.37	1.36	2.86	3.66	3.57	2.90	1.38	1.35	2.45	3.79	3.64	2.90						

C Range: 0 - 360DEG  
C Interval: 30.0DEG  
Test Speed: HIGH  
Temperature:25.3DEG  
Operators:LPC  
Test Date:2021-12-16

γ Range: 0 - 180DEG  
γ Interval: 1.0DEG  
Test System:EVERFINE GO-2000B\_V1 SYSTEM V2.0.362  
Humidity:65.0%  
Test Distance:9.200m [K=1.0000]  
Remarks:

## Photometric Data Table [cd]

G/C	0.0	30.0	60.0	90.0	120.0	150.0	180.0	210.0	240.0	270.0
0.0	56.58	55.43	54.78	54.28	54.13	53.94	56.58	55.43	54.78	54.28
3.0	56.68	55.76	54.94	54.22	53.83	53.53	56.41	55.00	54.47	54.23
6.0	56.64	55.91	54.92	53.97	53.40	53.08	56.15	54.52	54.04	53.94
9.0	56.55	55.94	54.86	53.55	52.87	52.62	55.77	53.99	53.45	53.42
12.0	56.30	55.94	54.50	52.79	52.12	52.05	55.34	53.42	52.69	52.60
15.0	55.95	55.81	53.85	51.89	51.18	51.38	54.85	52.75	51.73	51.54
18.0	55.54	55.55	53.09	50.80	50.13	50.58	54.37	52.00	50.61	50.36
21.0	55.14	55.14	52.18	49.45	48.94	49.67	53.89	51.01	49.37	48.86
24.0	54.76	54.56	51.13	48.06	47.61	48.57	53.34	50.03	48.00	47.38
27.0	54.31	53.81	49.94	46.41	46.18	47.39	52.68	48.82	46.51	45.57
30.0	53.75	53.08	48.62	44.71	44.64	46.25	51.89	47.66	44.95	43.76
33.0	53.11	52.30	47.22	42.75	42.98	45.19	51.00	46.46	43.29	41.79
36.0	52.40	51.53	45.73	40.70	41.26	44.09	50.02	45.35	41.54	39.65
39.0	51.57	50.70	44.16	38.60	39.43	42.92	49.07	44.18	39.72	37.42
42.0	50.65	49.83	42.53	36.37	37.54	41.67	48.28	42.93	37.80	35.08
45.0	49.65	48.85	40.80	33.96	35.69	40.33	47.42	41.63	35.90	32.71
48.0	48.71	47.79	39.02	31.56	33.84	38.97	46.46	40.24	34.03	30.24
51.0	47.80	46.64	37.23	29.03	31.94	37.55	45.43	38.81	32.13	27.68
54.0	46.77	45.37	35.42	26.42	29.98	36.18	44.32	37.40	30.14	25.09
57.0	45.67	44.12	33.61	23.82	27.99	34.79	43.16	35.97	28.13	22.40
60.0	44.50	42.81	31.75	21.13	26.00	33.41	42.01	34.51	26.12	19.68
63.0	43.30	41.60	29.87	18.40	24.02	32.06	40.83	33.12	24.11	17.06
66.0	42.07	40.37	27.98	15.71	22.08	30.71	39.63	31.76	22.15	14.41
69.0	40.82	39.03	26.09	12.96	20.23	29.36	38.42	30.36	20.29	11.74
72.0	39.57	37.66	24.22	10.32	18.52	28.07	37.20	29.01	18.54	9.180
75.0	38.31	36.32	22.52	7.769	16.94	26.74	35.95	27.66	16.93	6.677
78.0	37.01	34.98	20.86	5.352	15.47	25.41	34.67	26.28	15.43	4.354
81.0	35.69	33.67	19.29	3.297	14.15	23.99	33.37	24.91	14.07	2.508
84.0	34.33	32.40	17.85	1.680	12.89	22.77	32.02	23.57	12.78	0.9641
87.0	32.93	31.09	16.62	0.8941	11.81	21.47	30.57	22.24	11.67	0.6488
90.0	31.51	29.81	15.56	0.8192	10.88	20.30	29.15	21.01	10.70	0.6134
93.0	30.02	28.56	14.66	0.8344	10.11	19.19	27.76	19.84	9.903	0.6133
96.0	28.58	27.34	13.88	0.8544	9.486	18.15	26.40	18.76	9.265	0.6132
99.0	27.15	24.83	13.17	0.8847	8.938	15.77	24.70	16.47	8.257	0.6729
102.0	25.23	23.11	12.44	1.026	8.355	15.29	23.29	15.76	7.850	0.7214
105.0	23.92	22.31	11.10	1.086	6.642	14.68	21.98	14.91	6.587	0.7335
108.0	22.64	21.35	10.91	1.161	6.318	14.03	20.12	14.30	6.300	0.7456
111.0	21.40	20.32	10.21	1.252	6.087	13.28	19.30	13.74	5.788	0.7738
114.0	20.23	19.40	9.524	1.367	5.660	11.93	18.18	12.71	5.406	0.9042
117.0	19.16	18.47	8.883	1.503	5.374	11.13	16.83	11.85	5.105	1.010
120.0	18.17	17.59	8.025	1.599	5.087	10.50	15.97	11.05	4.864	1.150
123.0	17.25	16.81	7.393	1.719	4.841	9.929	15.16	10.30	4.433	1.316
126.0	16.38	16.11	7.062	1.825	4.599	9.341	14.28	9.616	4.377	1.427
129.0	15.50	15.30	6.906	1.930	4.278	8.703	13.49	8.933	4.055	1.558
132.0	14.49	13.87	6.600	2.036	4.107	8.115	12.67	8.370	3.939	1.673
135.0	13.45	12.11	6.203	2.126	3.815	7.361	11.64	7.697	3.683	1.799
138.0	12.40	10.70	5.866	2.201	3.564	6.568	10.37	6.886	3.457	1.920
141.0	11.43	9.375	5.520	2.272	3.293	6.165	9.069	6.300	3.200	2.020
144.0	10.53	8.421	5.248	2.332	2.916	5.472	8.792	5.875	2.924	2.116
147.0	9.703	7.632	4.966	2.398	2.595	5.065	8.425	5.389	2.597	2.216
150.0	9.008	6.757	4.685	2.629	2.273	4.627	7.767	4.872	2.286	2.407
153.0	8.360	6.044	4.568	2.770	1.886	4.114	7.103	4.319	1.898	2.553
156.0	7.692	5.497	4.689	2.900	2.114	3.547	6.441	3.891	1.836	2.693
159.0	6.742	4.964	4.724	3.041	2.331	2.923	5.891	3.379	2.112	2.834
162.0	6.275	4.461	4.754	3.182	1.390	2.335	4.996	2.816	1.386	2.995
165.0	5.521	4.118	4.739	3.312	1.368	2.007	4.581	2.218	1.318	3.136
168.0	3.059	4.082	4.725	3.423	1.361	2.107	2.562	1.999	1.320	3.286
171.0	2.760	4.045	4.574	3.528	1.347	1.322	2.250	1.382	1.323	3.432
174.0	2.449	3.844	4.443	3.579	1.332	1.317	1.914	1.377	1.325	3.573
177.0	2.127	3.689	4.293	3.654	1.312	1.302	1.601	1.372	1.327	3.684
180.0	1.372	1.362	2.860	3.664	3.568	2.900	1.382	1.352	2.453	3.794
G/C	300.0	330.0								
0.0	54.13	53.94								
3.0	54.23	54.28								
6.0	54.21	54.52								
9.0	54.03	54.64								
12.0	53.59	54.65								
15.0	52.97	54.49								
18.0	52.15	54.19								
21.0	51.16	53.80								
24.0	50.03	53.34								
27.0	48.84	52.81								
30.0	47.60	52.15								

C Range: 0 - 360DEG  
 C Interval: 30.0DEG  
 Test Speed: HIGH  
 Temperature: 25.3DEG  
 Operators: LPC  
 Test Date: 2021-12-16

γ Range: 0 - 180DEG  
 γ Interval: 1.0DEG  
 Test System: EVERFINE GO-2000B\_V1 SYSTEM V2.0.362  
 Humidity: 65.0%  
 Test Distance: 9.200m [K=1.0000]  
 Remarks:

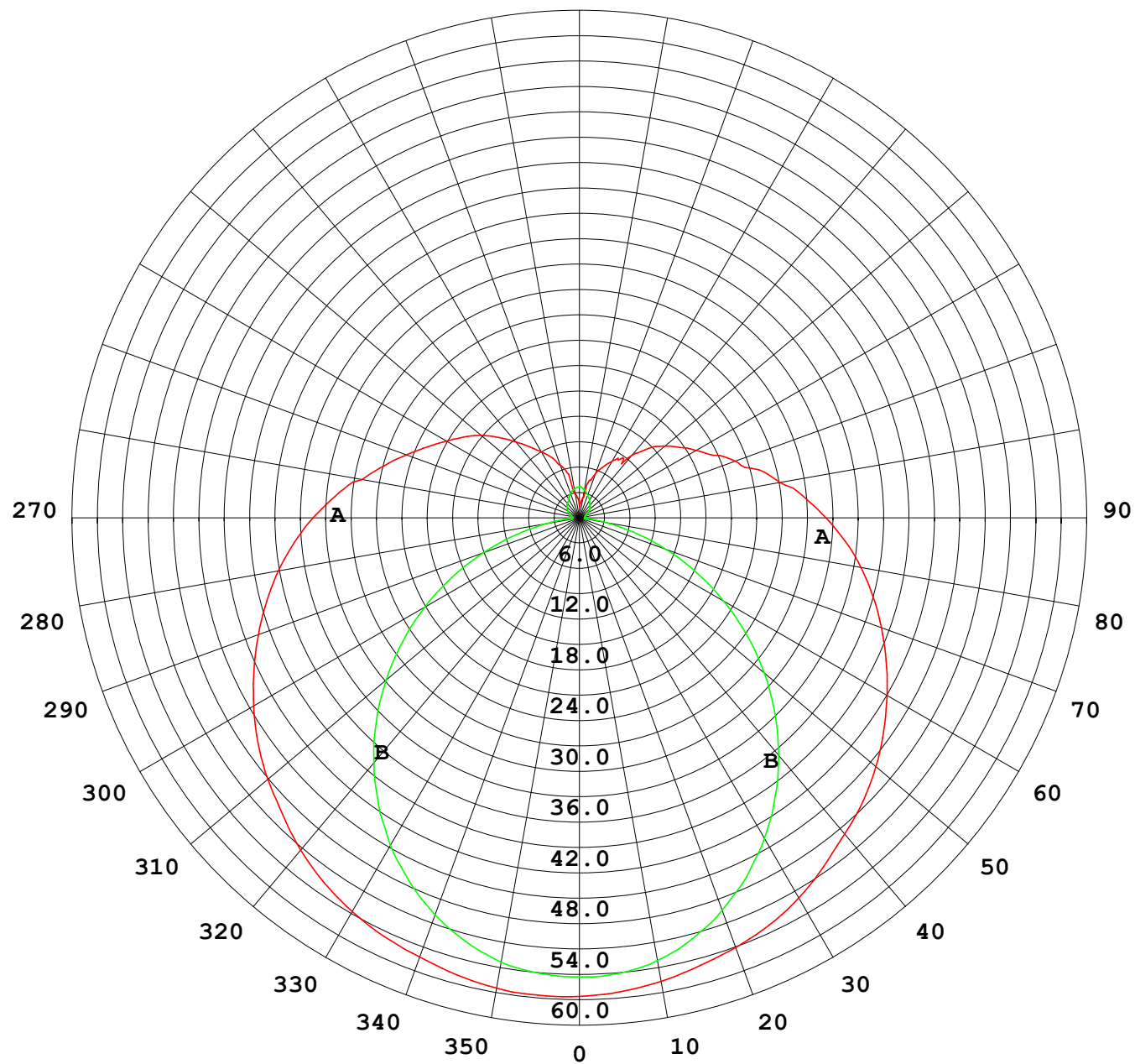
## Photometric Data Table [cd]

33.0	46.28	51.40
36.0	44.90	50.62
39.0	43.46	49.86
42.0	41.94	49.05
45.0	40.30	48.14
48.0	38.57	47.17
51.0	36.79	46.11
54.0	35.01	45.00
57.0	33.23	43.78
60.0	31.41	42.50
63.0	29.56	41.31
66.0	27.69	40.18
69.0	25.83	38.95
72.0	23.98	37.68
75.0	22.27	36.39
78.0	20.64	35.08
81.0	19.07	33.84
84.0	17.61	32.59
87.0	16.36	31.33
90.0	15.28	30.10
93.0	14.37	28.89
96.0	13.59	27.69
99.0	12.85	25.27
102.0	12.16	23.51
105.0	10.75	22.66
108.0	10.15	21.72
111.0	9.939	20.74
114.0	9.802	19.37
117.0	9.155	18.48
120.0	8.461	17.65
123.0	8.195	16.85
126.0	7.719	16.03
129.0	7.392	15.20
132.0	7.070	13.89
135.0	6.728	12.57
138.0	6.225	10.78
141.0	5.788	9.541
144.0	5.457	8.799
147.0	5.140	8.038
150.0	4.793	7.394
153.0	4.654	6.772
156.0	4.765	6.143
159.0	4.870	5.455
162.0	4.872	4.807
165.0	4.874	4.373
168.0	4.859	4.452
171.0	4.774	4.463
174.0	4.694	4.403
177.0	4.558	4.297
180.0	3.639	2.900

C Range: 0 - 360DEG  
 C Interval: 30.0DEG  
 Test Speed: HIGH  
 Temperature: 25.3DEG  
 Operators: LPC  
 Test Date: 2021-12-16

γ Range: 0 - 180DEG  
 γ Interval: 1.0DEG  
 Test System: EVERFINE GO-2000B\_V1 SYSTEM V2.0.362  
 Humidity: 65.0%  
 Test Distance: 9.200m [K=1.0000]  
 Remarks:

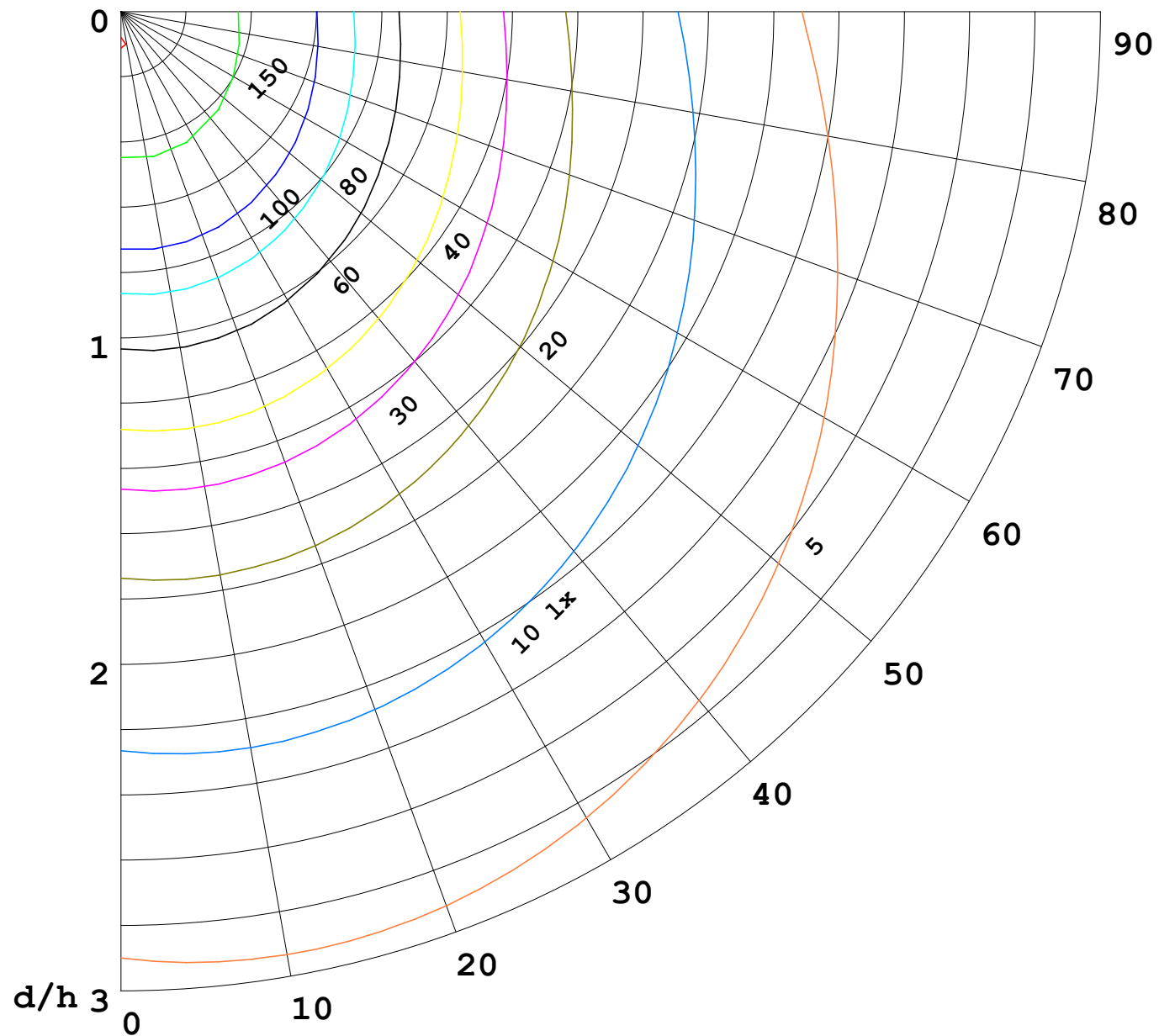
I (cd)





1000 lm

$\kappa = 1$



F = 5000 lm  
 K = 0.7  
 Hcc = 0.0 m  
 Hfc = 0.0 m  
 Eave = 100 lx

	Pcc	Pw	Pfc
—	70	50	30
—	50	30	20

