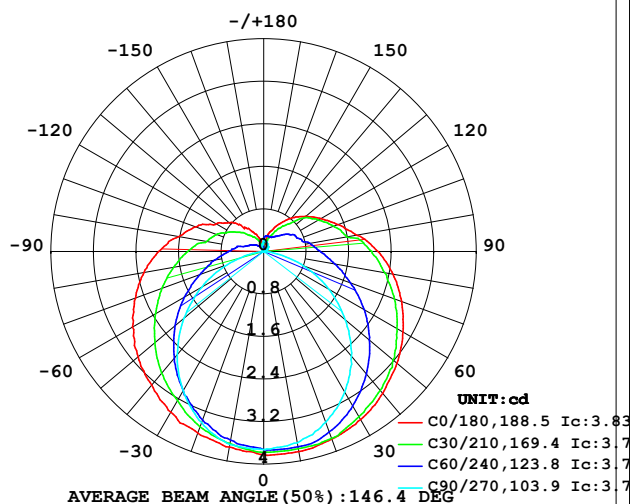


## LUMINAIRE PHOTOMETRIC TEST REPORT

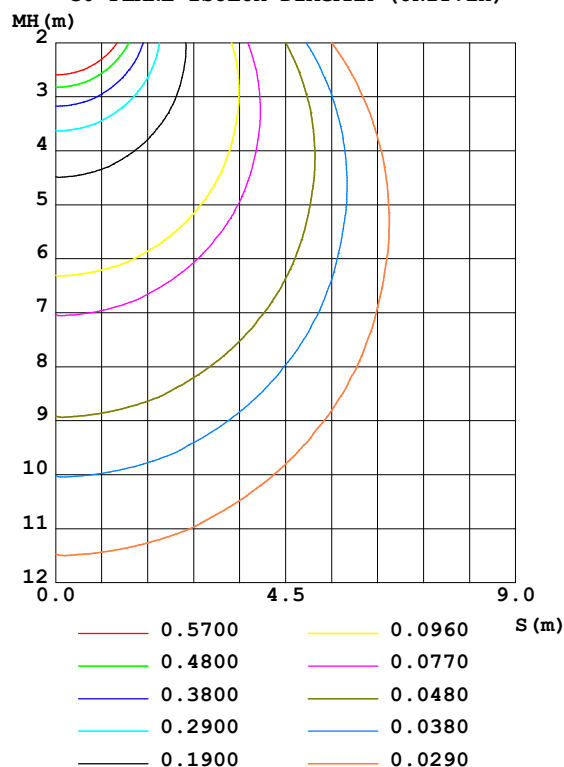
Test:U:24.00V I:0.3214A P:7.714W PF:1.000 Freq:50.00Hz Lamp Flux:18.7349x1 lm		
NAME: SF21-24V-5050-70-DMX4-RGBW(2700)-B	TYPE: 硅胶	WEIGHT:
SPEC.:	DIM.: 28mm*11.5mm	SERIAL No.:2021121604
MFR.: OLYMPIA	SUR.:1*0.016	Shielding Angle:

DATA OF LAMP		PHOTOMETRIC DATA				Eff: 2.43 lm/W
MODEL	5050	I <sub>max</sub> (cd)	3.834	S/MH (C0/180)	1.38	
NOMINAL POWER (W)	4.5	LOR (%)	100.0	S/MH (C90/270)	1.22	
RATED VOLTAGE (V)	24	TOTAL FLUX (lm)	18.735	η UP, DN (C0-180)	11.4, 39.2	
NOMINAL FLUX (lm)	18.7349	CIE CLASS	SEMI-D.	η UP, DN (C180-360)	10.8, 38.5	
LAMPS INSIDE	1	η up (%)	22.3	CIBSE SHR NOM	1.50	
TEST VOLTAGE (V)	24	η down (%)	77.7	CIBSE SHR MAX	1.55	

LUMINOUS INTENSITY DISTRIBUTION DIAGRAM



C0 PLANE ISOLUX DIAGRAM (UNIT: lx)



C Range: 0 - 360DEG  
C Interval: 30.0DEG  
Test Speed: HIGH  
Temperature: 25.3DEG  
Operators: LPC  
Test Date: 2021-12-16

γ Range: 0 - 180DEG  
γ Interval: 1.0DEG  
Test System: EVERFINE GO-2000B\_V1 SYSTEM V2.0.362  
Humidity: 65.0%  
Test Distance: 9.200m [K=1.0000]  
Remarks:

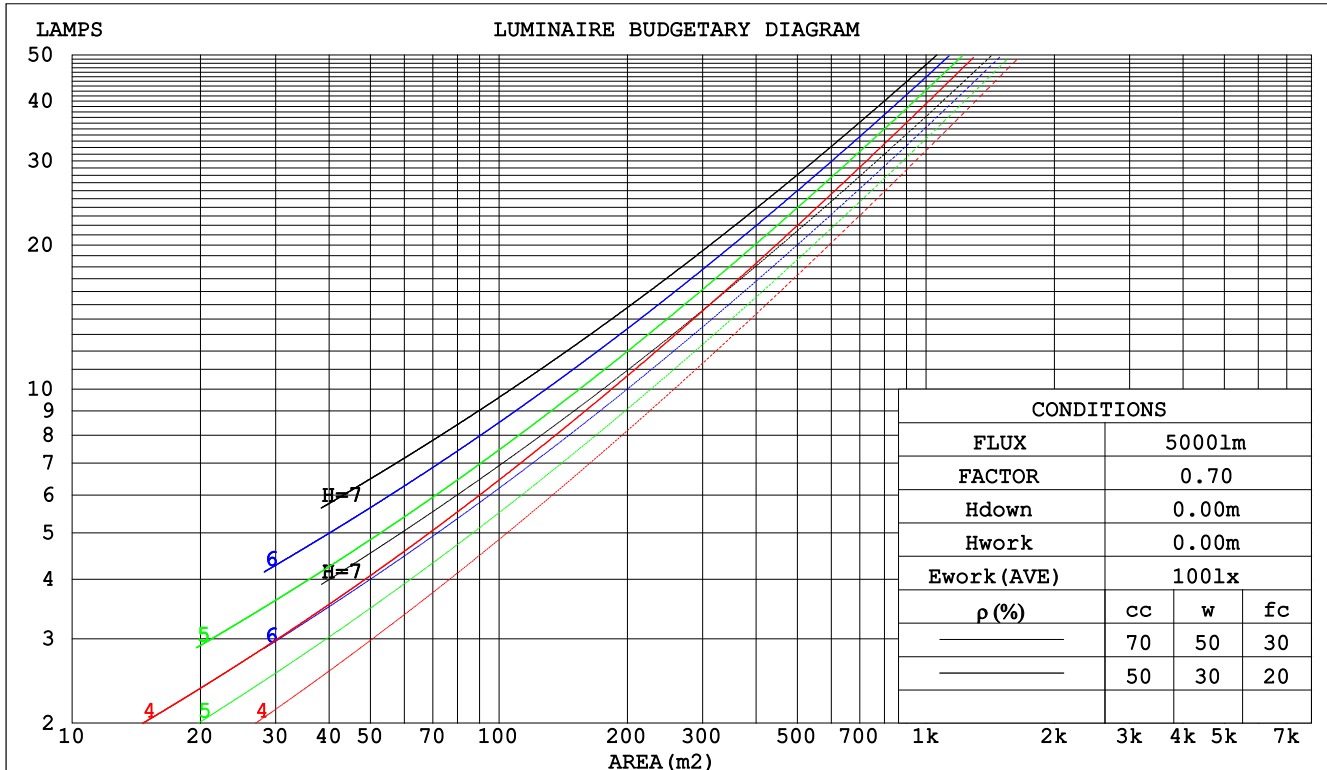




## CU AND LUMINAIRE BUDGETARY ESTIMATE DIAGRAM

Test:U:24.00V I:0.3214A P:7.714W PF:1.000 Freq:50.00Hz Lamp Flux:18.7349x1 lm		
NAME: SF21-24V-5050-70-DMX4-RGBW(2700)-B	TYPE: 硅胶	WEIGHT:
SPEC.:	DIM.: 28mm*11.5mm	SERIAL No.:2021121604
MFR.: OLYMPIA	SUR.:1*0.016	Shielding Angle:

pcc	80%			70%			50%			30%			10%			0
pw	50%	30%	10%	50%	30%	10%	50%	30%	10%	50%	30%	10%	50%	30%	10%	0
pfc	20%			20%			20%			20%			20%			0
RCR	RCR:Room Cavity Ratio						Coefficients of Utilization(CU)									
0.0	1.14	1.14	1.14	1.09	1.09	1.09	.99	.99	.99	.90	.90	.90	.82	.82	.82	.78
1.0	.94	.89	.84	.90	.85	.81	.82	.78	.74	.74	.71	.68	.67	.64	.62	.58
2.0	.81	.73	.66	.77	.70	.64	.70	.64	.59	.63	.58	.54	.57	.53	.50	.46
3.0	.70	.61	.54	.67	.58	.52	.60	.54	.48	.55	.49	.44	.49	.45	.41	.38
4.0	.61	.52	.45	.59	.50	.43	.53	.46	.40	.48	.42	.37	.43	.39	.34	.31
5.0	.54	.45	.38	.52	.43	.37	.47	.40	.34	.43	.37	.32	.39	.34	.30	.27
6.0	.49	.39	.33	.47	.38	.32	.42	.35	.30	.39	.32	.28	.35	.30	.26	.23
7.0	.44	.35	.29	.42	.34	.28	.38	.31	.26	.35	.29	.24	.32	.27	.23	.20
8.0	.40	.31	.25	.38	.30	.24	.35	.28	.23	.32	.26	.22	.29	.24	.20	.18
9.0	.36	.28	.22	.35	.27	.22	.32	.25	.21	.29	.24	.19	.27	.22	.18	.16
10.0	.33	.25	.20	.32	.25	.20	.30	.23	.18	.27	.21	.17	.25	.20	.16	.14



C Range: 0 - 360DEG  
 C Interval: 30.0DEG  
 Test Speed: HIGH  
 Temperature:25.3DEG  
 Operators:LPC  
 Test Date:2021-12-16

γ Range: 0 - 180DEG  
 γ Interval: 1.0DEG  
 Test System:EVERFINE GO-2000B\_V1 SYSTEM V2.0.362  
 Humidity:65.0%  
 Test Distance:9.200m [K=1.0000]  
 Remarks:

## WEC AND CCEC

Test:U:24.00V I:0.3214A P:7.714W PF:1.000 Freq:50.00Hz Lamp Flux:18.7349x1 lm		
NAME: SF21-24V-5050-70-DMX4-RGBW(2700)-B	TYPE: 硅胶	WEIGHT:
SPEC.:	DIM.: 28mm*11.5mm	SERIAL No.:2021121604
MFR.: OLYMPIA	SUR.:1*0.016	Shielding Angle:

pcc	80%			70%			50%			30%			10%			0	
pw	50%	30%	10%	50%	30%	10%	50%	30%	10%	50%	30%	10%	50%	30%	10%	0	
pfc	20%			20%			20%			20%			20%			0	
RCR	RCR:Room Cavity Ratio						Wall Exitance Coeffcients(WEC)										
0.0																	
1.0	.388	.221	.070	.374	.213	.068	.348	.199	.064	.324	.187	.060	.301	.175	.056		
2.0	.334	.183	.056	.321	.177	.055	.297	.165	.051	.276	.155	.048	.255	.144	.046		
3.0	.296	.157	.047	.284	.152	.046	.263	.142	.043	.243	.133	.041	.224	.124	.038		
4.0	.266	.138	.041	.256	.134	.040	.236	.125	.037	.218	.117	.035	.201	.109	.033		
5.0	.241	.123	.036	.232	.119	.035	.214	.112	.033	.198	.104	.031	.182	.097	.029		
6.0	.221	.111	.032	.212	.107	.031	.196	.101	.029	.181	.094	.028	.167	.088	.026		
7.0	.204	.101	.029	.196	.098	.028	.181	.092	.026	.167	.086	.025	.154	.080	.023		
8.0	.189	.092	.026	.182	.089	.025	.168	.084	.024	.155	.079	.023	.143	.073	.021		
9.0	.176	.085	.024	.169	.083	.023	.157	.077	.022	.145	.073	.021	.133	.068	.020		
10.0	.165	.079	.022	.159	.077	.021	.147	.072	.020	.136	.067	.019	.125	.063	.018		

pcc	80%			70%			50%			30%			10%			0
pw	50%	30%	10%	50%	30%	10%	50%	30%	10%	50%	30%	10%	50%	30%	10%	0
pfc	20%			20%			20%			20%			20%			0
RCR	RCR:Room Cavity Ratio						Ceiling Cavity Exitance Coefficients(CCEC)									
0.0	.360	.360	.360	.308	.308	.308	.210	.210	.210	.121	.121	.121	.039	.039	.039	
1.0	.357	.326	.299	.305	.280	.258	.209	.193	.178	.120	.112	.104	.038	.036	.033	
2.0	.350	.304	.265	.300	.262	.229	.205	.181	.160	.118	.105	.094	.038	.034	.031	
3.0	.343	.288	.244	.294	.248	.211	.202	.172	.148	.116	.101	.087	.037	.033	.029	
4.0	.335	.275	.230	.287	.238	.200	.198	.166	.141	.114	.097	.083	.037	.032	.027	
5.0	.327	.266	.220	.281	.230	.191	.194	.160	.135	.112	.094	.080	.036	.031	.026	
6.0	.320	.258	.213	.275	.223	.186	.190	.156	.131	.110	.092	.078	.035	.030	.026	
7.0	.313	.251	.208	.269	.218	.181	.186	.153	.128	.108	.090	.076	.035	.029	.025	
8.0	.306	.246	.204	.263	.213	.178	.182	.150	.126	.106	.088	.075	.034	.029	.025	
9.0	.300	.241	.201	.258	.209	.175	.179	.147	.125	.104	.087	.074	.034	.028	.025	
10.0	.294	.237	.199	.253	.206	.173	.176	.145	.123	.103	.086	.073	.033	.028	.024	

C Range: 0 - 360DEG  
 C Interval: 30.0DEG  
 Test Speed: HIGH  
 Temperature:25.3DEG  
 Operators:LPC  
 Test Date:2021-12-16

γ Range: 0 - 180DEG  
 γ Interval: 1.0DEG  
 Test System:EVERFINE GO-2000B\_V1 SYSTEM V2.0.362  
 Humidity:65.0%  
 Test Distance:9.200m [K=1.0000]  
 Remarks:



### UTILIZATION FACTORS TABLE

Test:U:24.00V I:0.3214A P:7.714W PF:1.000 Freq:50.00Hz Lamp Flux:18.7349x1 lm		
NAME: SF21-24V-5050-70-DMX4-RGBW(2700) -B	TYPE: 硅胶	WEIGHT:
SPEC.:	DIM.: 28mm*11.5mm	SERIAL No.:2021121604
MFR.: OLYMPIA	SUR.:1*0.016	Shielding Angle:

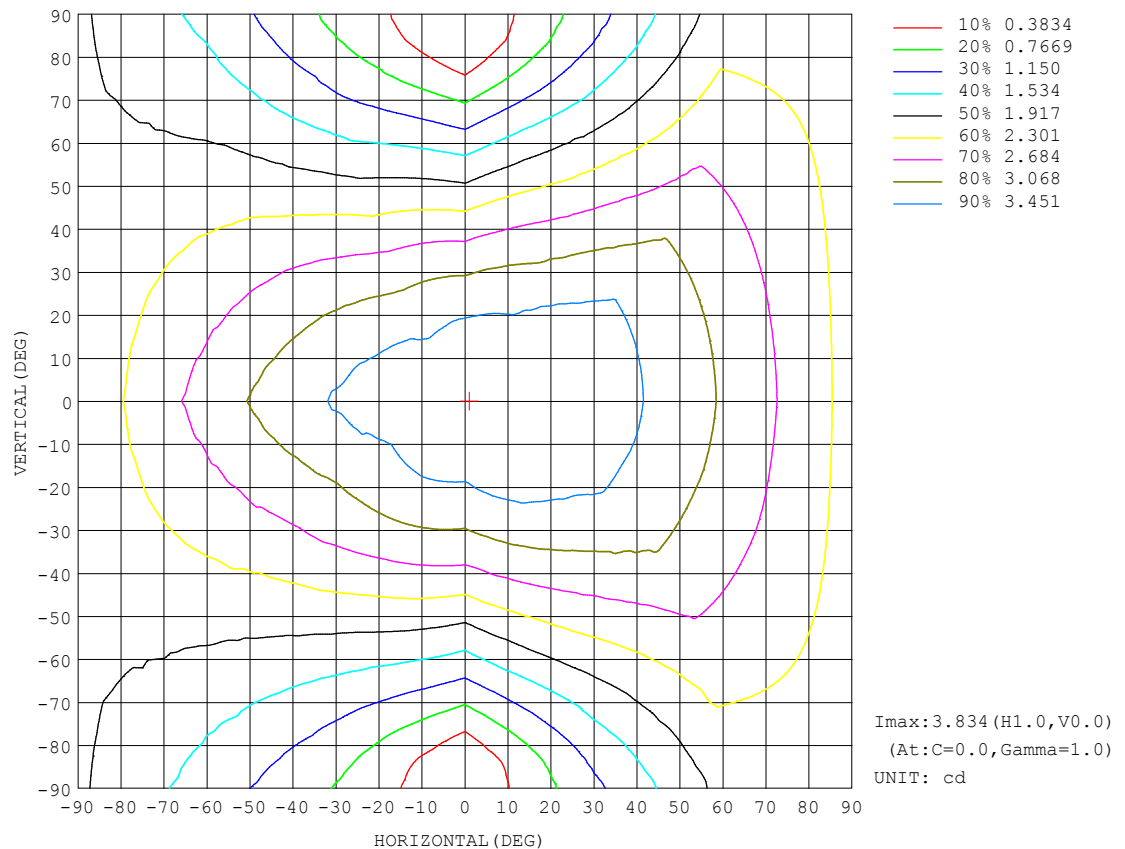
REFLECTANCE										
Ceiling	0.8	0.8	0.8	0.7	0.7	0.7	0.5	0.5	0.5	0
Walls	0.7	0.5	0.3	0.7	0.5	0.3	0.7	0.5	0.3	0
Working plane	0.2	0.2	0.2	0.2	0.2	0.2	0.2	0.2	0.2	0
ROOM INDEX	UTILIZATION FACTORS (PERCENT) $k(RI) \times RCR = 5$									
$k = 0.60$	46	34	27	45	33	26	43	32	26	19
0.80	55	42	34	54	41	34	51	40	33	25
1.00	63	50	41	61	49	41	57	49	39	30
1.25	70	57	48	67	56	47	63	53	46	35
1.50	75	63	54	72	61	53	67	57	50	39
2.00	82	71	63	79	69	61	73	64	58	45
2.50	87	76	68	83	74	66	76	69	62	49
3.00	91	81	73	87	78	71	79	72	67	52
4.00	95	87	80	91	84	78	83	77	72	57
5.00	98	91	85	94	88	82	86	81	76	60
ROOM INDEX	UF (total)									Direct
According to DIN EN 13032-2 2004			Suspended					SHRNOM = 1.25		

C Range: 0 - 360DEG  
C Interval: 30.0DEG  
Test Speed: HIGH  
Temperature:25.3DEG  
Operators:LPC  
Test Date:2021-12-16

$\gamma$  Range: 0 - 180DEG  
 $\gamma$  Interval: 1.0DEG  
Test System:EVERFINE GO-2000B\_V1 SYSTEM V2.0.362  
Humidity:65.0%  
Test Distance:9.200m [K=1.0000]  
Remarks:

### ISOCANDELA DIAGRAM

Test:U:24.00V I:0.3214A P:7.714W PF:1.000 Freq:50.00Hz Lamp Flux:18.7349x1 lm		
NAME: SF21-24V-5050-70-DMX4-RGBW(2700)-B	TYPE:硅胶	WEIGHT:
SPEC.:	DIM.: 28mm*11.5mm	SERIAL No.:2021121604
MFR.: OLYMPIA	SUR.:1*0.016	Shielding Angle:



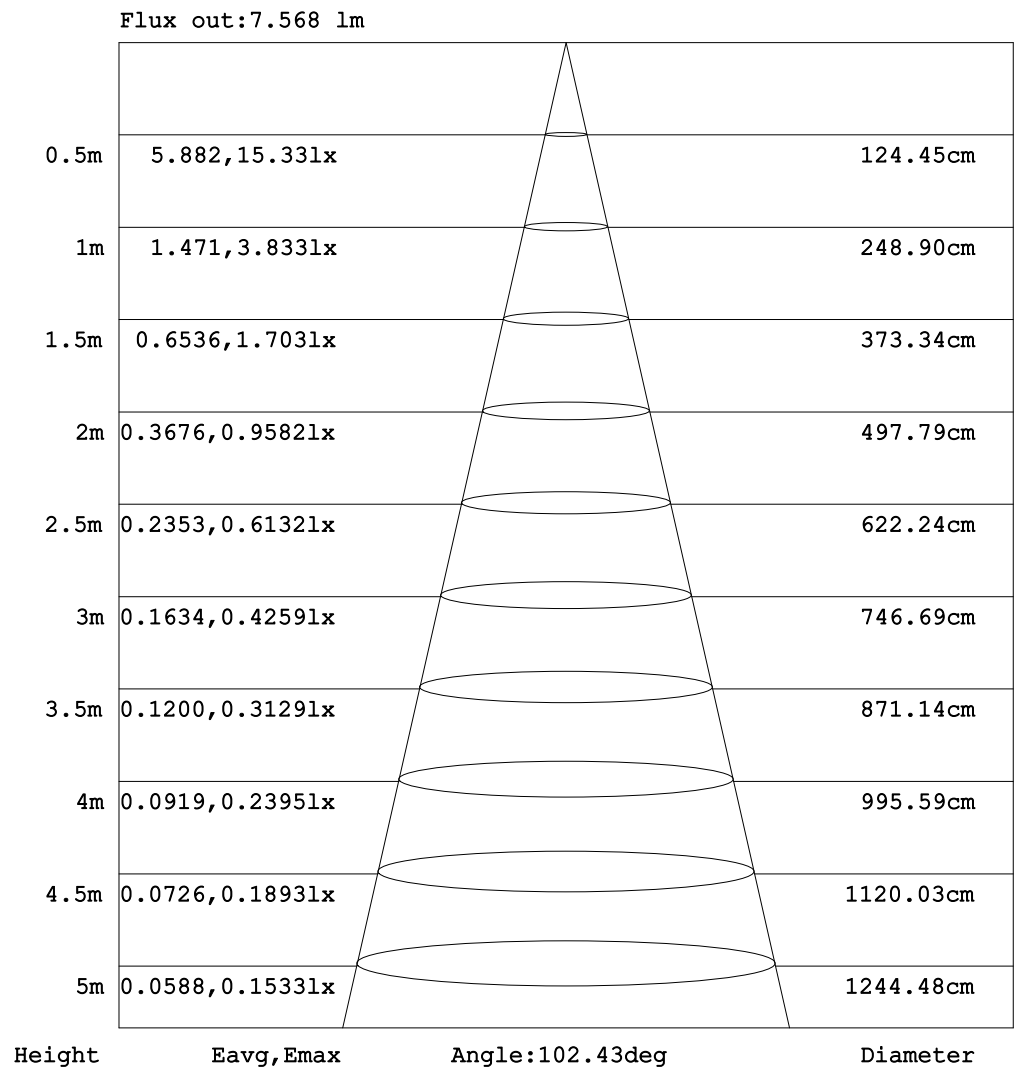
C Range: 0 - 360DEG  
C Interval: 30.0DEG  
Test Speed: HIGH  
Temperature:25.3DEG  
Operators:LPC  
Test Date:2021-12-16

γ Range: 0 - 180DEG  
 γ Interval: 1.0DEG  
 Test System:EVERFINE GO-2000B\_V1 SYSTEM V2.0.362  
 Humidity:65.0%  
 Test Distance:9.200m [K=1.0000]  
 Remarks:



## AAI Figure

Test:U:24.00V I:0.3214A P:7.714W PF:1.000 Freq:50.00Hz Lamp Flux:18.7349x1 lm		
NAME: SF21-24V-5050-70-DMX4-RGBW(2700)-B	TYPE:硅胶	WEIGHT:
SPEC.:	DIM.: 28mm*11.5mm	SERIAL No.:2021121604
MFR.: OLYMPIA	SUR.:1*0.016	Shielding Angle:



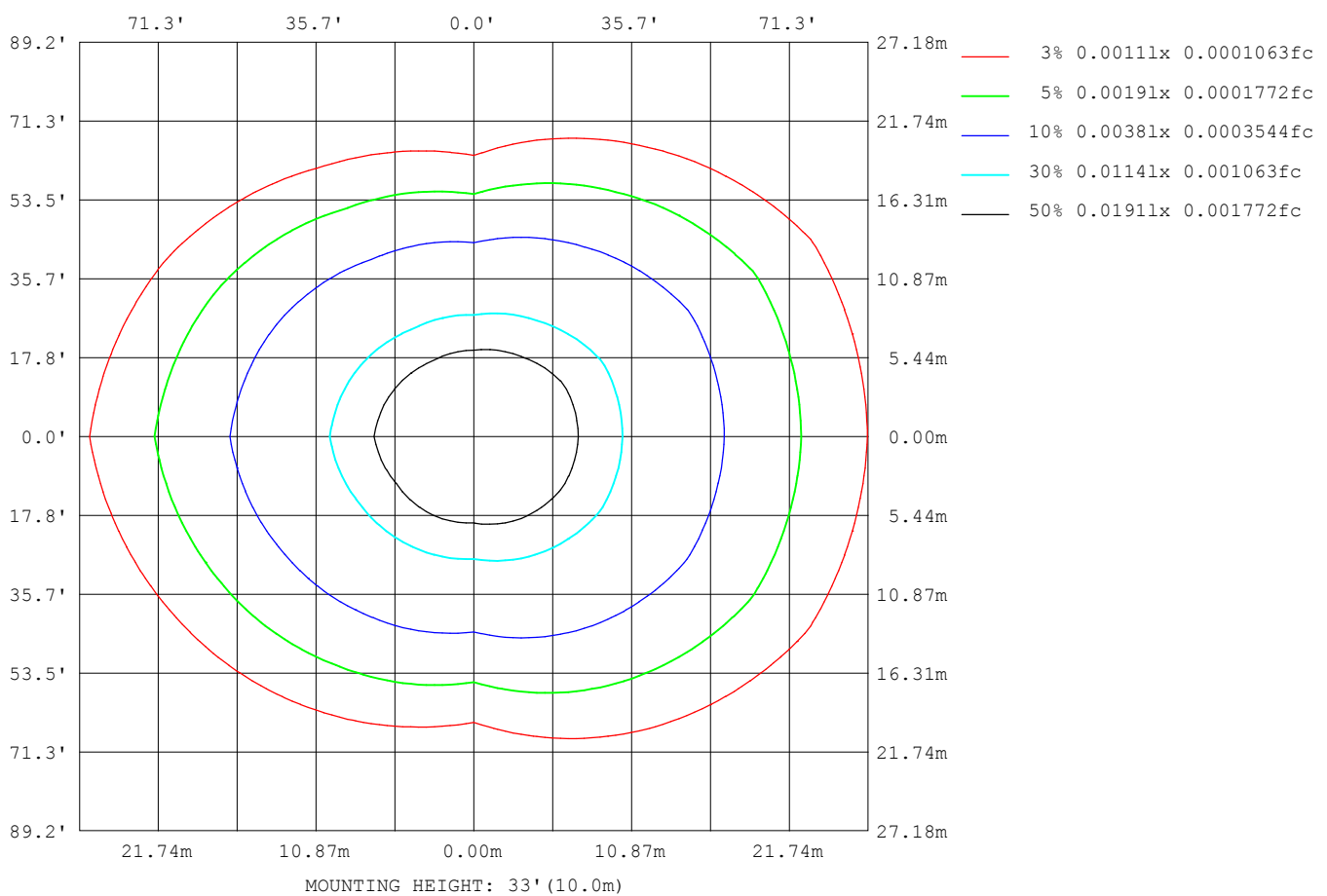
Note: The Curves indicate the illuminated area and the average illumination when the luminaire is at different distance.

C Range: 0 - 360DEG  
C Interval: 30.0DEG  
Test Speed: HIGH  
Temperature:25.3DEG  
Operators:LPC  
Test Date:2021-12-16

γ Range: 0 - 180DEG  
 γ Interval: 1.0DEG  
 Test System:EVERFINE GO-2000B\_V1 SYSTEM V2.0.362  
 Humidity:65.0%  
 Test Distance:9.200m [K=1.0000]  
 Remarks:

## ISOLUX DIAGRAM

Test:U:24.00V I:0.3214A P:7.714W PF:1.000 Freq:50.00Hz Lamp Flux:18.7349x1 lm		
NAME: SF21-24V-5050-70-DMX4-RGBW(2700)-B	TYPE:硅胶	WEIGHT:
SPEC.:	DIM.: 28mm*11.5mm	SERIAL No.:2021121604
MFR.: OLYMPIA	SUR.:1*0.016	Shielding Angle:



C Range: 0 - 360DEG  
C Interval: 30.0DEG  
Test Speed: HIGH  
Temperature:25.3DEG  
Operators:LPC  
Test Date:2021-12-16

γ Range: 0 - 180DEG  
 γ Interval: 1.0DEG  
 Test System:EVERFINE GO-2000B\_V1 SYSTEM V2.0.362  
 Humidity:65.0%  
 Test Distance:9.200m [K=1.0000]  
 Remarks:





## LUMINOUS DISTRIBUTION INTENSITY DATA

Test:U:24.00V I:0.3214A P:7.714W PF:1.000 Freq:50.00Hz Lamp Flux:18.7349x1 lm		
NAME: SF21-24V-5050-70-DMX4-RGBW(2700)-B	TYPE: 硅胶	WEIGHT:
SPEC.:	DIM.: 28mm*11.5mm	SERIAL No.:2021121604
MFR.: OLYMPIA	SUR.:1*0.016	Shielding Angle:

Table--1

UNIT: cd

C (DEG) γ (DEG)	0	30	60	90	120	150	180	210	240	270	300	330						
0	3.81	3.77	3.72	3.72	3.73	3.73	3.81	3.77	3.72	3.72	3.73	3.73						
5	3.83	3.77	3.74	3.69	3.73	3.66	3.77	3.73	3.67	3.71	3.73	3.75						
10	3.82	3.77	3.73	3.65	3.66	3.60	3.73	3.67	3.60	3.68	3.69	3.76						
15	3.79	3.76	3.71	3.57	3.57	3.54	3.68	3.60	3.50	3.57	3.64	3.76						
20	3.75	3.74	3.61	3.41	3.45	3.44	3.63	3.51	3.37	3.42	3.53	3.75						
25	3.71	3.66	3.49	3.26	3.30	3.35	3.58	3.39	3.20	3.24	3.41	3.72						
30	3.65	3.59	3.35	3.05	3.13	3.18	3.49	3.24	3.03	3.03	3.25	3.65						
35	3.57	3.50	3.19	2.83	2.94	3.06	3.40	3.12	2.84	2.79	3.10	3.56						
40	3.48	3.41	3.01	2.57	2.71	2.92	3.28	2.99	2.61	2.53	2.92	3.47						
45	3.37	3.30	2.81	2.30	2.49	2.78	3.19	2.84	2.39	2.25	2.74	3.38						
50	3.27	3.18	2.60	2.00	2.27	2.60	3.09	2.67	2.18	1.96	2.53	3.26						
55	3.16	3.05	2.40	1.71	2.04	2.43	2.96	2.51	1.95	1.65	2.33	3.13						
60	3.03	2.89	2.18	1.42	1.81	2.28	2.85	2.35	1.72	1.35	2.12	2.99						
65	2.90	2.76	1.96	1.11	1.59	2.11	2.70	2.19	1.50	1.04	1.89	2.85						
70	2.76	2.61	1.74	0.80	1.37	1.96	2.56	2.04	1.29	0.72	1.68	2.70						
75	2.62	2.46	1.54	0.50	1.18	1.79	2.44	1.87	1.09	0.42	1.48	2.55						
80	2.47	2.31	1.36	0.22	1.02	1.66	2.29	1.72	0.93	0.18	1.30	2.41						
85	2.32	2.17	1.20	0.03	0.87	1.50	2.13	1.58	0.77	0.02	1.13	2.27						
90	2.15	2.04	1.07	0.03	0.74	1.35	1.97	1.43	0.67	0.00	1.00	2.12						
95	1.98	1.88	0.97	0.03	0.65	1.25	1.81	1.30	0.58	0.00	0.90	1.98						
100	1.77	1.58	0.89	0.03	0.59	1.03	1.63	1.10	0.51	0.00	0.82	1.69						
105	1.62	1.51	0.75	0.04	0.44	0.95	1.49	1.02	0.38	0.00	0.68	1.59						
110	1.49	1.40	0.72	0.05	0.40	0.87	1.36	0.94	0.33	0.00	0.63	1.49						
115	1.36	1.30	0.67	0.07	0.36	0.75	1.20	0.84	0.29	0.00	0.59	1.35						
120	1.24	1.18	0.64	0.08	0.33	0.67	1.05	0.74	0.25	0.00	0.54	1.25						
125	1.14	1.09	0.57	0.08	0.29	0.59	0.92	0.64	0.21	0.00	0.48	1.15						
130	1.03	0.99	0.50	0.09	0.26	0.51	0.85	0.56	0.20	0.04	0.44	1.05						
135	0.92	0.80	0.43	0.12	0.23	0.43	0.76	0.47	0.16	0.04	0.40	0.88						
140	0.82	0.66	0.38	0.12	0.20	0.36	0.56	0.40	0.13	0.05	0.34	0.70						
145	0.71	0.54	0.35	0.13	0.16	0.28	0.53	0.33	0.11	0.06	0.30	0.58						
150	0.60	0.44	0.31	0.16	0.13	0.24	0.43	0.29	0.06	0.08	0.30	0.51						
155	0.51	0.34	0.30	0.17	0.09	0.18	0.36	0.23	0.05	0.11	0.30	0.40						
160	0.41	0.27	0.30	0.18	0.09	0.10	0.28	0.17	0.05	0.13	0.29	0.33						
165	0.34	0.22	0.30	0.19	0.05	0.07	0.23	0.10	0.04	0.13	0.28	0.27						
170	0.15	0.21	0.30	0.19	0.05	0.04	0.07	0.05	0.04	0.16	0.27	0.27						
175	0.12	0.20	0.28	0.20	0.04	0.04	0.05	0.05	0.04	0.17	0.25	0.26						
180	0.04	0.04	0.16	0.20	0.17	0.16	0.05	0.05	0.11	0.21	0.21	0.17						

C Range: 0 - 360DEG  
C Interval: 30.0DEG  
Test Speed: HIGH  
Temperature:25.3DEG  
Operators:LPC  
Test Date:2021-12-16

γ Range: 0 - 180DEG  
γ Interval: 1.0DEG  
Test System:EVERFINE GO-2000B\_V1 SYSTEM V2.0.362  
Humidity:65.0%  
Test Distance:9.200m [K=1.0000]  
Remarks:

Photometric Data Table [cd]

G/C	0.0	30.0	60.0	90.0	120.0	150.0	180.0	210.0	240.0	270.0
0.0	3.815	3.774	3.724	3.724	3.734	3.729	3.815	3.774	3.724	3.724
3.0	3.830	3.774	3.739	3.699	3.734	3.689	3.779	3.754	3.684	3.719
6.0	3.825	3.772	3.735	3.684	3.714	3.654	3.769	3.724	3.664	3.704
9.0	3.821	3.769	3.731	3.654	3.674	3.623	3.739	3.684	3.613	3.689
12.0	3.816	3.766	3.727	3.603	3.629	3.583	3.724	3.644	3.583	3.644
15.0	3.795	3.764	3.709	3.568	3.569	3.538	3.679	3.599	3.498	3.569
18.0	3.769	3.746	3.654	3.482	3.498	3.493	3.659	3.543	3.412	3.488
21.0	3.744	3.737	3.594	3.387	3.423	3.417	3.613	3.483	3.342	3.398
24.0	3.719	3.684	3.523	3.282	3.332	3.347	3.583	3.413	3.246	3.282
27.0	3.684	3.638	3.448	3.171	3.237	3.257	3.563	3.327	3.131	3.162
30.0	3.649	3.588	3.353	3.050	3.131	3.176	3.493	3.242	3.025	3.031
33.0	3.609	3.528	3.252	2.920	3.016	3.106	3.427	3.171	2.914	2.890
36.0	3.563	3.488	3.152	2.769	2.890	3.025	3.372	3.091	2.784	2.739
39.0	3.498	3.422	3.041	2.618	2.760	2.945	3.302	3.011	2.673	2.584
42.0	3.438	3.362	2.925	2.457	2.624	2.859	3.251	2.925	2.527	2.418
45.0	3.372	3.302	2.810	2.296	2.493	2.784	3.186	2.840	2.392	2.252
48.0	3.317	3.256	2.684	2.120	2.358	2.673	3.126	2.739	2.261	2.076
51.0	3.252	3.166	2.564	1.949	2.222	2.568	3.060	2.639	2.130	1.895
54.0	3.182	3.085	2.433	1.769	2.086	2.467	3.010	2.538	1.995	1.714
57.0	3.111	2.990	2.312	1.588	1.945	2.372	2.925	2.443	1.859	1.538
60.0	3.026	2.895	2.182	1.417	1.810	2.281	2.849	2.352	1.723	1.347
63.0	2.945	2.819	2.046	1.241	1.669	2.191	2.769	2.252	1.578	1.162
66.0	2.870	2.734	1.910	1.045	1.543	2.080	2.683	2.156	1.452	0.9755
69.0	2.785	2.648	1.785	0.8539	1.413	1.980	2.608	2.066	1.326	0.7845
72.0	2.699	2.553	1.654	0.6779	1.292	1.889	2.518	1.970	1.201	0.6037
75.0	2.619	2.462	1.543	0.4971	1.181	1.794	2.437	1.875	1.090	0.4227
78.0	2.528	2.372	1.433	0.3162	1.076	1.703	2.352	1.779	1.010	0.2668
81.0	2.438	2.276	1.322	0.1804	0.9854	1.613	2.261	1.689	0.8942	0.1360
84.0	2.342	2.201	1.222	0.0501	0.8949	1.518	2.161	1.594	0.8087	0.0205
87.0	2.252	2.116	1.146	0.0251	0.8145	1.437	2.070	1.518	0.7234	0
90.0	2.151	2.035	1.066	0.0251	0.7440	1.352	1.975	1.428	0.6681	0
93.0	2.046	1.940	1.000	0.0251	0.6887	1.281	1.879	1.352	0.6031	0
96.0	1.950	1.859	0.9500	0.0251	0.6385	1.206	1.799	1.272	0.5527	0
99.0	1.845	1.658	0.8998	0.0252	0.6032	1.030	1.663	1.111	0.5176	0
102.0	1.714	1.553	0.8496	0.0352	0.5531	1.000	1.558	1.061	0.4821	0
105.0	1.624	1.513	0.7540	0.0402	0.4374	0.9548	1.492	1.015	0.3768	0
108.0	1.548	1.447	0.7439	0.0453	0.4072	0.9196	1.412	0.9751	0.3466	0
111.0	1.458	1.377	0.6988	0.0503	0.3921	0.8540	1.332	0.9299	0.3165	0
114.0	1.377	1.322	0.6736	0.0604	0.3670	0.7588	1.261	0.8646	0.2953	0
117.0	1.302	1.246	0.6659	0.0704	0.3468	0.6985	1.135	0.7841	0.2772	0
120.0	1.242	1.181	0.6384	0.0804	0.3267	0.6682	1.045	0.7389	0.2461	0
123.0	1.171	1.136	0.5930	0.0804	0.3016	0.6180	0.9997	0.6786	0.2251	0
126.0	1.106	1.075	0.5530	0.0804	0.2865	0.5828	0.9145	0.6183	0.2061	0.0100
129.0	1.051	1.015	0.5079	0.0905	0.2715	0.5226	0.8642	0.5781	0.1960	0.0251
132.0	0.9853	0.9194	0.4675	0.1006	0.2513	0.4873	0.8189	0.5329	0.1858	0.0352
135.0	0.9250	0.7987	0.4273	0.1164	0.2313	0.4322	0.7586	0.4676	0.1608	0.0352
138.0	0.8647	0.7034	0.4021	0.1189	0.2112	0.3769	0.6882	0.4123	0.1407	0.0402
141.0	0.7993	0.6330	0.3720	0.1260	0.1910	0.3518	0.5731	0.3821	0.1255	0.0452
144.0	0.7340	0.5627	0.3468	0.1257	0.1709	0.2964	0.5426	0.3410	0.1104	0.0552
147.0	0.6686	0.5174	0.3267	0.1408	0.1409	0.2765	0.5221	0.3228	0.0804	0.0603
150.0	0.6032	0.4422	0.3117	0.1608	0.1257	0.2411	0.4272	0.2916	0.0552	0.0753
153.0	0.5430	0.3667	0.3056	0.1609	0.0906	0.1961	0.3867	0.2514	0.0452	0.0954
156.0	0.4928	0.3264	0.3040	0.1709	0.0854	0.1507	0.3568	0.2212	0.0452	0.1155
159.0	0.4223	0.2763	0.3024	0.1800	0.0854	0.1154	0.3013	0.1761	0.0452	0.1256
162.0	0.3871	0.2211	0.3008	0.1910	0.0605	0.0653	0.2563	0.1358	0.0402	0.1319
165.0	0.3368	0.2157	0.2993	0.1920	0.0503	0.0653	0.2311	0.0956	0.0402	0.1338
168.0	0.1609	0.2103	0.2977	0.1930	0.0452	0.0452	0.1003	0.0804	0.0402	0.1357
171.0	0.1408	0.2049	0.3015	0.1940	0.0452	0.0402	0.0703	0.0453	0.0402	0.1508
174.0	0.1157	0.1996	0.2865	0.1950	0.0502	0.0402	0.0502	0.0452	0.0402	0.1608
177.0	0.1005	0.1909	0.2714	0.1960	0.0402	0.0402	0.0452	0.0452	0.0402	0.1859
180.0	0.0402	0.0402	0.1608	0.1960	0.1658	0.1608	0.0452	0.0452	0.1106	0.2061
G/C	300.0	330.0								
0.0	3.734	3.729								
3.0	3.734	3.739								
6.0	3.729	3.754								
9.0	3.714	3.759								
12.0	3.674	3.758								
15.0	3.643	3.757								
18.0	3.568	3.756								
21.0	3.503	3.755								
24.0	3.422	3.734								
27.0	3.342	3.699								
30.0	3.252	3.654								

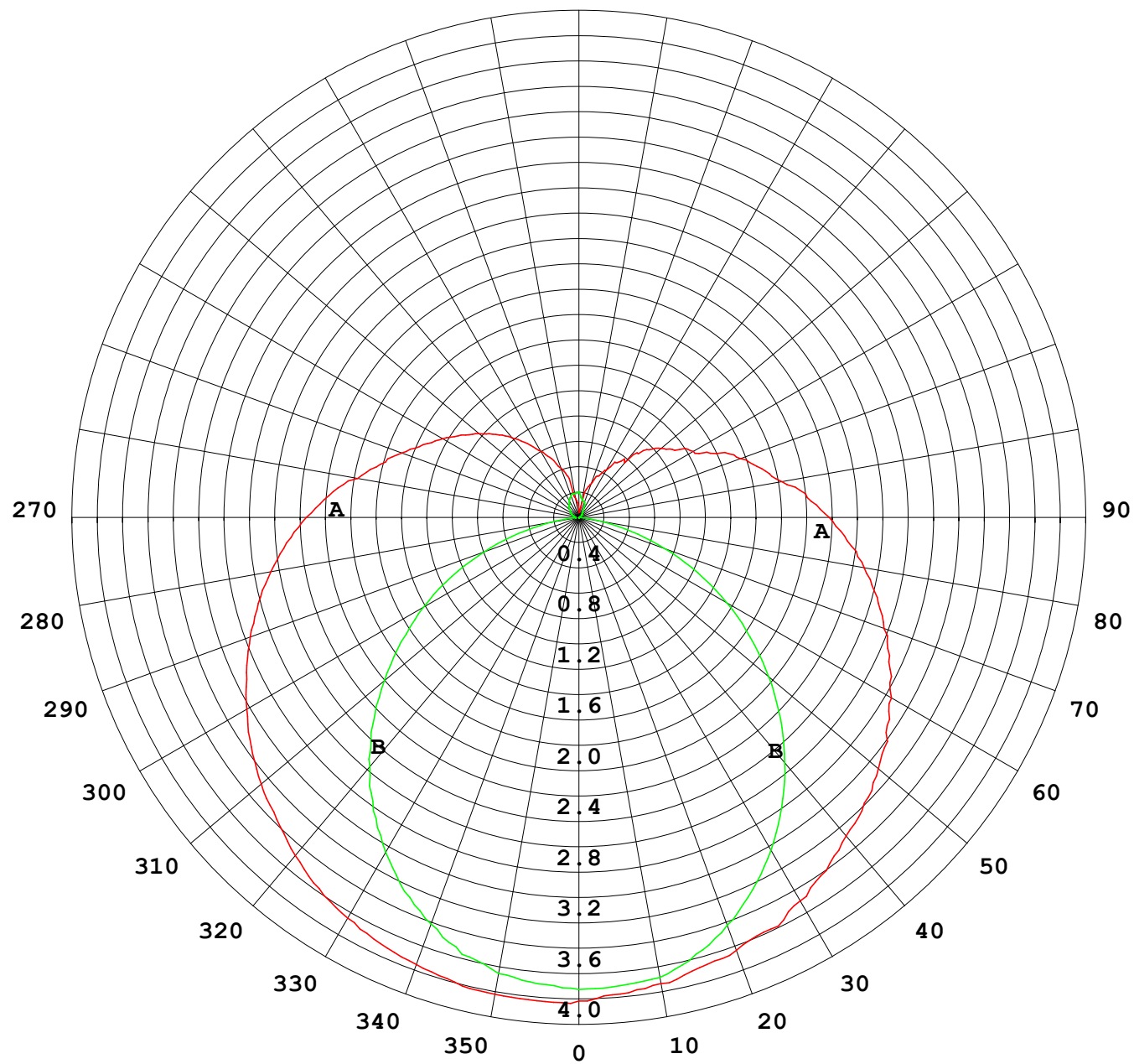
```

γ Range: 0 - 180DEG
γ Interval: 1.0DEG
Test System:EVERFINE GO-2000B_V1 SYSTEM V2.0.362
Humidity:65.0%
Test Distance:9.200m [K=1.0000]
Remarks:

```



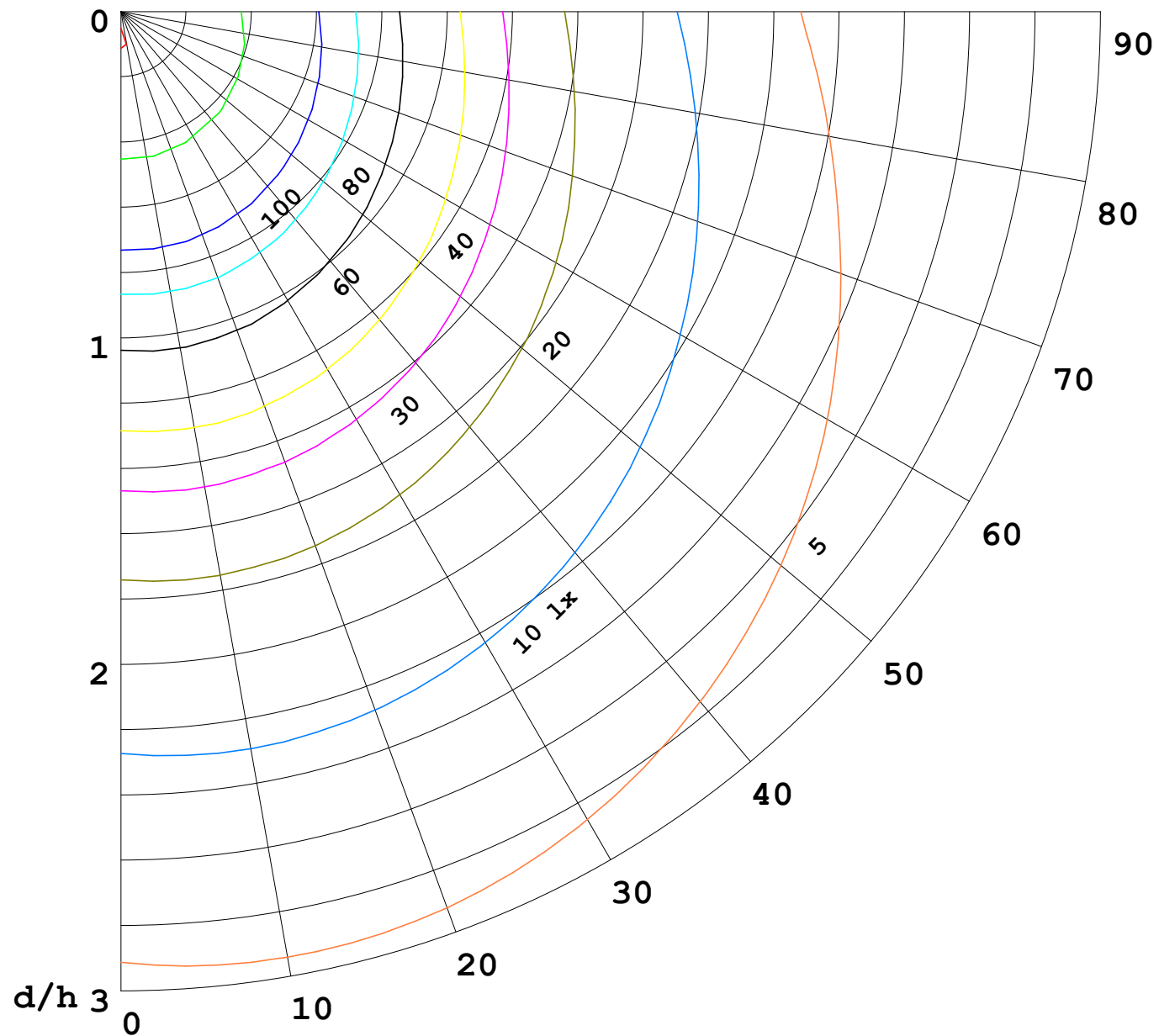
I (cd)





1000 lm

$\kappa = 1$



F = 5000 lm  
 K = 0.7  
 Hcc = 0.0 m  
 Hfc = 0.0 m  
 Eave = 100 lx

	Pcc	Pw	Pfc
—	70	50	30
—	50	30	20

