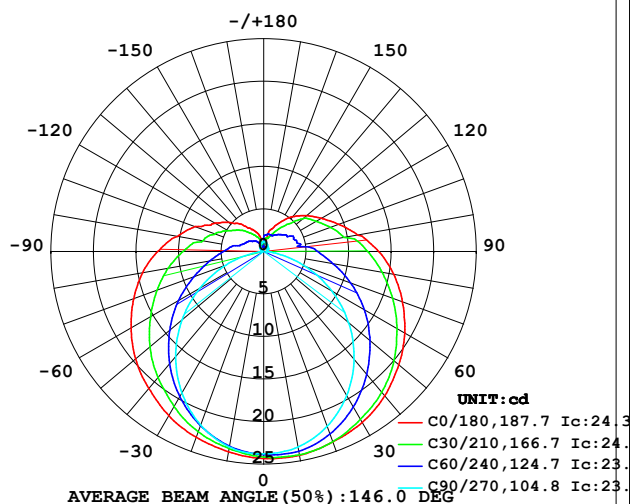


LUMINAIRE PHOTOMETRIC TEST REPORT

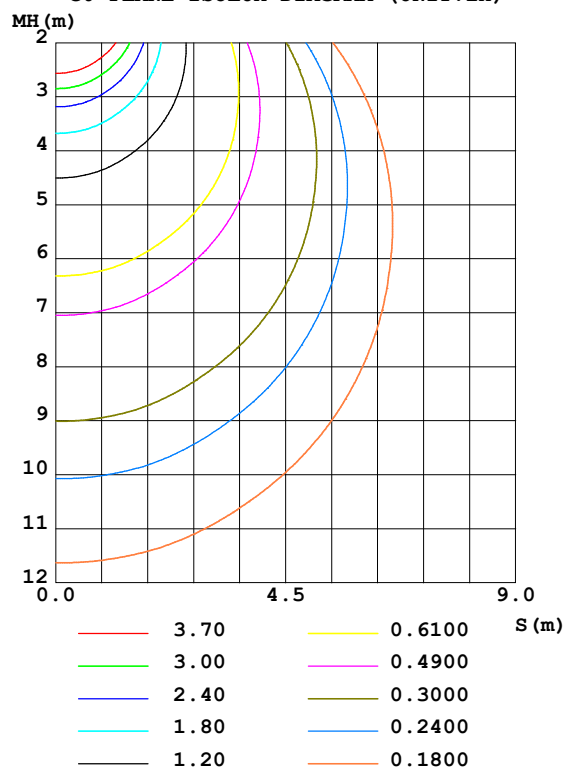
| | | |
|---|-------------------|-----------------------|
| Test:U:24.00V I:0.3234A P:7.762W PF:1.000 Freq:50.00Hz Lamp Flux:120.215x1 lm | | |
| NAME: SF21-24V-5050-70-DMX4-RGBW(5000) -G | TYPE: 硅胶 | WEIGHT: |
| SPEC.: | DIM.: 28mm*11.5mm | SERIAL No.:2021121707 |
| MFR.: OLYMPIA | SUR.:1*0.016 | Shielding Angle: |

| DATA OF LAMP | | PHOTOMETRIC DATA Eff: 15.49 lm/W | | | |
|------------------|---------|----------------------------------|---------|-------------------|-----------|
| MODEL | 5050 | I _{max} (cd) | 24.38 | S/MH (C0/180) | 1.37 |
| NOMINAL POWER(W) | 4.5 | LOR(%) | 100.0 | S/MH (C90/270) | 1.21 |
| RATED VOLTAGE(V) | 24 | TOTAL FLUX(lm) | 120.22 | η UP,DN(C0-180) | 11.4,38.8 |
| NOMINAL FLUX(lm) | 120.215 | CIE CLASS | SEMI-D. | η UP,DN(C180-360) | 11.3,38.5 |
| LAMPS INSIDE | 1 | η up (%) | 22.7 | CIBSE SHR NOM | 1.50 |
| TEST VOLTAGE(V) | 24 | η down (%) | 77.3 | CIBSE SHR MAX | 1.55 |

LUMINOUS INTENSITY DISTRIBUTION DIAGRAM



C0 PLANE ISOLUX DIAGRAM (UNIT:lx)



C Range: 0 - 360DEG
C Interval: 30.0DEG
Test Speed: HIGH
Temperature: 25.3DEG
Operators: LPC
Test Date: 2021-12-17

γ Range: 0 - 180DEG
γ Interval: 1.0DEG
Test System: EVERFINE GO-2000B_V1 SYSTEM V2.0.362
Humidity: 65.0%
Test Distance: 9.200m [K=1.0000]
Remarks:

ZONAL FLUX DIAGRAM

ZONAL FLUX DIAGRAM:

| γ | C0 | C45 | C90 | C135 | C180 | C225 | C270 | C315 | γ | Φ zone | Φ total | %lum, lamp |
|----------|-----------------------|--------|--------|--------|--------|--------|--------|-------|----------|-------------|--------------|------------|
| 10 | 24.33 | 24.05 | 23.33 | 23.10 | 23.91 | 23.38 | 23.34 | 23.83 | 0- 10 | 2.271 | 2.271 | 1.89,1.89 |
| 20 | 23.81 | 23.31 | 21.87 | 21.90 | 23.24 | 22.15 | 21.72 | 23.11 | 10- 20 | 6.557 | 8.828 | 7.34,7.34 |
| 30 | 23.19 | 21.93 | 19.54 | 20.10 | 22.30 | 20.38 | 19.23 | 21.82 | 20- 30 | 10.11 | 18.94 | 15.8,15.8 |
| 40 | 22.15 | 20.21 | 16.55 | 18.00 | 21.01 | 18.27 | 16.11 | 20.25 | 30- 40 | 12.61 | 31.54 | 26.2,26.2 |
| 50 | 20.74 | 18.16 | 13.04 | 15.64 | 19.66 | 15.93 | 12.52 | 18.31 | 40- 50 | 13.91 | 45.45 | 37.8,37.8 |
| 60 | 19.14 | 15.89 | 9.214 | 13.18 | 18.00 | 13.46 | 8.642 | 16.10 | 50- 60 | 13.98 | 59.43 | 49.4,49.4 |
| 70 | 17.36 | 13.50 | 5.253 | 10.79 | 16.27 | 11.04 | 4.747 | 13.81 | 60- 70 | 12.97 | 72.41 | 60.2,60.2 |
| 80 | 15.52 | 11.21 | 1.706 | 8.692 | 14.45 | 8.913 | 1.344 | 11.59 | 70- 80 | 11.23 | 83.64 | 69.6,69.6 |
| 90 | 13.53 | 9.298 | 0.3524 | 6.933 | 12.45 | 7.114 | 0.2413 | 9.747 | 80- 90 | 9.306 | 92.95 | 77.3,77.3 |
| 100 | 11.24 | 6.961 | 0.3822 | 5.425 | 10.31 | 5.521 | 0.2661 | 7.832 | 90-100 | 7.665 | 100.6 | 83.7,83.7 |
| 110 | 9.380 | 6.152 | 0.4624 | 4.256 | 8.590 | 4.357 | 0.2881 | 6.689 | 100-110 | 5.954 | 106.6 | 88.6,88.6 |
| 120 | 7.822 | 5.405 | 0.5329 | 3.523 | 6.673 | 3.594 | 0.3566 | 5.636 | 110-120 | 4.666 | 111.2 | 92.5,92.5 |
| 130 | 6.570 | 4.553 | 0.6132 | 2.889 | 5.375 | 2.918 | 0.5226 | 4.765 | 120-130 | 3.554 | 114.8 | 95.5,95.5 |
| 140 | 5.359 | 3.337 | 0.6685 | 2.254 | 4.225 | 2.297 | 0.7035 | 3.491 | 130-140 | 2.477 | 117.3 | 97.5,97.5 |
| 150 | 4.027 | 2.445 | 0.7843 | 1.573 | 3.129 | 1.741 | 0.9246 | 2.631 | 140-150 | 1.551 | 118.8 | 98.8,98.8 |
| 160 | 2.850 | 1.966 | 0.9650 | 1.043 | 2.366 | 1.171 | 1.020 | 2.165 | 150-160 | 0.8778 | 119.7 | 99.6,99.6 |
| 170 | 1.262 | 1.807 | 1.101 | 0.6494 | 0.9944 | 0.6126 | 1.101 | 1.936 | 160-170 | 0.4138 | 120.1 | 99.9,99.9 |
| 180 | 0.5679 | 0.8066 | 1.116 | 1.068 | 0.5629 | 0.6810 | 1.201 | 1.083 | 170-180 | 0.1097 | 120.2 | 100,100 |
| DEG | LUMINOUS INTENSITY:cd | | | | | | | | | UNIT:lm | | |

Conical surface Flux(90deg): 38.416 lm

%lum = 32.0%

%lamp = 32.0%

Conical surface Flux(120deg): 59.434 lm

%lum = 49.4%

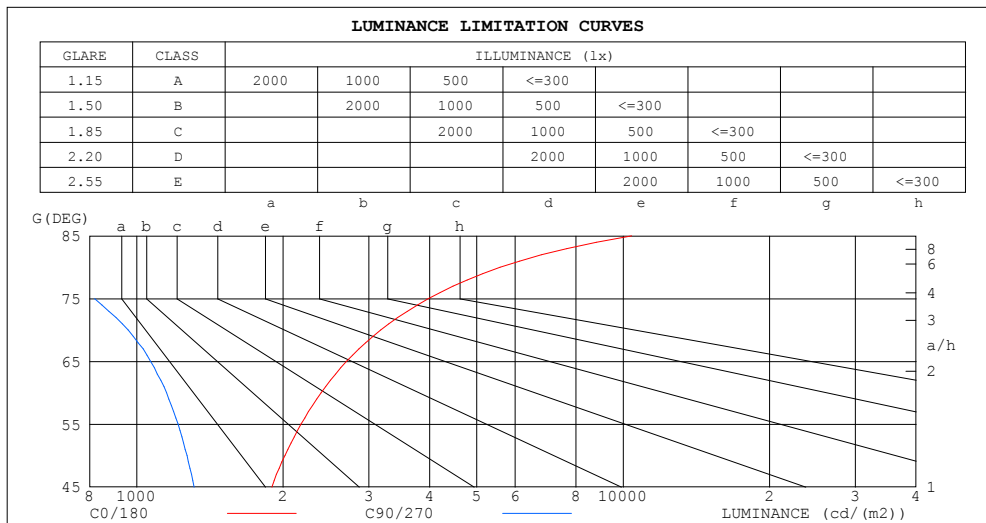
%lamp = 49.4%

C Range: 0 - 360DEG
 C Interval: 30.0DEG
 Test Speed: HIGH
 Temperature:25.3DEG
 Operators:LPC
 Test Date:2021-12-17

γ Range: 0 - 180DEG
 γ Interval: 1.0DEG
 Test System:EVERFINE GO-2000B_V1 SYSTEM V2.0.362
 Humidity:65.0%
 Test Distance:9.200m [K=1.0000]
 Remarks:

LUMINANCE LIMITATION CURVES

| | | |
|---|-------------------|-----------------------|
| Test:U:24.00V I:0.3234A P:7.762W PF:1.000 Freq:50.00Hz Lamp Flux:120.215x1 lm | | |
| NAME: SF21-24V-5050-70-DMX4-RGBW(5000) -G | TYPE: 硅胶 | WEIGHT: |
| SPEC.: | DIM.: 28mm*11.5mm | SERIAL No.:2021121707 |
| MFR.: OLYMPIA | SUR.:1*0.016 | Shielding Angle: |



| LUMINANCE cd/(m2) | | |
|-------------------|--------|---------|
| G (DEG) | C0/180 | C90/270 |
| 85 | 10410 | 359 |
| 80 | 5585 | 614 |
| 75 | 3975 | 819 |
| 70 | 3172 | 960 |
| 65 | 2699 | 1068 |
| 60 | 2393 | 1152 |
| 55 | 2176 | 1215 |
| 50 | 2016 | 1268 |
| 45 | 1896 | 1312 |

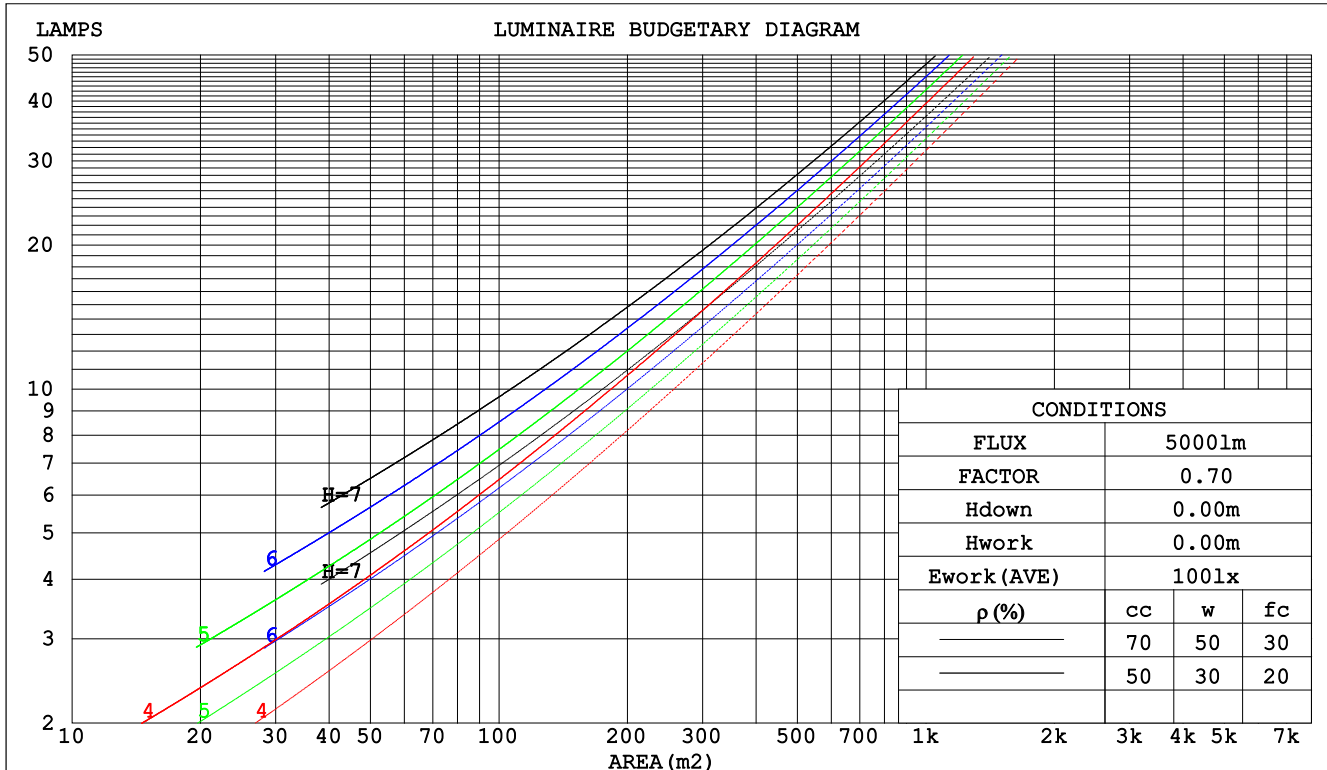
C Range: 0 - 360DEG
C Interval: 30.0DEG
Test Speed: HIGH
Temperature:25.3DEG
Operators:LPC
Test Date:2021-12-17

γ Range: 0 - 180DEG
 γ Interval: 1.0DEG
Test System:EVERFINE GO-2000B_V1 SYSTEM V2.0.362
Humidity:65.0%
Test Distance:9.200m [K=1.0000]
Remarks:

CU AND LUMINAIRE BUDGETARY ESTIMATE DIAGRAM

| | | |
|---|-------------------|-----------------------|
| Test:U:24.00V I:0.3234A P:7.762W PF:1.000 Freq:50.00Hz Lamp Flux:120.215x1 lm | | |
| NAME: SF21-24V-5050-70-DMX4-RGBW(5000) -G | TYPE: 硅胶 | WEIGHT: |
| SPEC.: | DIM.: 28mm*11.5mm | SERIAL No.:2021121707 |
| MFR.: OLYMPIA | SUR.:1*0.016 | Shielding Angle: |

| pcc | 80% | | | 70% | | | 50% | | | 30% | | | 10% | | | 0 |
|------|-----------------------|------|------|------|------|------|---------------------------------|-----|-----|-----|-----|-----|-----|-----|-----|-----|
| pw | 50% | 30% | 10% | 50% | 30% | 10% | 50% | 30% | 10% | 50% | 30% | 10% | 50% | 30% | 10% | 0 |
| pfc | 20% | | | 20% | | | 20% | | | 20% | | | 20% | | | 0 |
| RCR | RCR:Room Cavity Ratio | | | | | | Coefficients of Utilization(CU) | | | | | | | | | |
| 0.0 | 1.14 | 1.14 | 1.14 | 1.08 | 1.08 | 1.08 | .99 | .99 | .99 | .89 | .89 | .89 | .81 | .81 | .81 | .77 |
| 1.0 | .94 | .89 | .84 | .90 | .85 | .81 | .81 | .77 | .74 | .74 | .70 | .68 | .66 | .64 | .62 | .58 |
| 2.0 | .81 | .73 | .66 | .77 | .70 | .64 | .69 | .64 | .59 | .63 | .58 | .54 | .56 | .53 | .49 | .46 |
| 3.0 | .70 | .61 | .54 | .67 | .58 | .52 | .60 | .53 | .48 | .54 | .49 | .44 | .49 | .45 | .41 | .37 |
| 4.0 | .61 | .52 | .45 | .58 | .50 | .43 | .53 | .46 | .40 | .48 | .42 | .37 | .43 | .38 | .34 | .31 |
| 5.0 | .54 | .45 | .38 | .52 | .43 | .37 | .47 | .40 | .34 | .43 | .37 | .32 | .39 | .34 | .29 | .27 |
| 6.0 | .49 | .39 | .33 | .46 | .38 | .32 | .42 | .35 | .30 | .38 | .32 | .28 | .35 | .30 | .26 | .23 |
| 7.0 | .44 | .35 | .29 | .42 | .34 | .28 | .38 | .31 | .26 | .35 | .29 | .24 | .32 | .26 | .22 | .20 |
| 8.0 | .40 | .31 | .25 | .38 | .30 | .24 | .35 | .28 | .23 | .32 | .26 | .21 | .29 | .24 | .20 | .18 |
| 9.0 | .36 | .28 | .22 | .35 | .27 | .22 | .32 | .25 | .20 | .29 | .23 | .19 | .27 | .22 | .18 | .16 |
| 10.0 | .33 | .25 | .20 | .32 | .25 | .20 | .30 | .23 | .18 | .27 | .21 | .17 | .25 | .20 | .16 | .14 |



C Range: 0 - 360DEG
 C Interval: 30.0DEG
 Test Speed: HIGH
 Temperature:25.3DEG
 Operators:LPC
 Test Date:2021-12-17

γ Range: 0 - 180DEG
 γ Interval: 1.0DEG
 Test System:EVERFINE GO-2000B_V1 SYSTEM V2.0.362
 Humidity:65.0%
 Test Distance:9.200m [K=1.0000]
 Remarks:

WEC AND CCEC

| | | |
|---|-------------------|-----------------------|
| Test:U:24.00V I:0.3234A P:7.762W PF:1.000 Freq:50.00Hz Lamp Flux:120.215x1 lm | | |
| NAME: SF21-24V-5050-70-DMX4-RGBW(5000) -G | TYPE: 硅胶 | WEIGHT: |
| SPEC.: | DIM.: 28mm*11.5mm | SERIAL No.:2021121707 |
| MFR.: OLYMPIA | SUR.:1*0.016 | Shielding Angle: |

| pcc | 80% | | | 70% | | | 50% | | | 30% | | | 10% | | | 0 | |
|------|-----------------------|------|------|------|------|------|---------------------------------|------|------|------|------|------|------|------|------|---|--|
| pw | 50% | 30% | 10% | 50% | 30% | 10% | 50% | 30% | 10% | 50% | 30% | 10% | 50% | 30% | 10% | 0 | |
| pfc | 20% | | | 20% | | | 20% | | | 20% | | | 20% | | | 0 | |
| RCR | RCR:Room Cavity Ratio | | | | | | Wall Exitance Coeffcients (WEC) | | | | | | | | | | |
| 0.0 | | | | | | | | | | | | | | | | | |
| 1.0 | .387 | .220 | .070 | .373 | .213 | .068 | .347 | .199 | .064 | .322 | .186 | .060 | .300 | .174 | .056 | | |
| 2.0 | .333 | .183 | .056 | .321 | .177 | .054 | .297 | .165 | .051 | .275 | .154 | .048 | .254 | .144 | .045 | | |
| 3.0 | .295 | .157 | .047 | .284 | .152 | .046 | .262 | .142 | .043 | .242 | .133 | .041 | .223 | .124 | .038 | | |
| 4.0 | .266 | .138 | .041 | .255 | .133 | .039 | .235 | .125 | .037 | .217 | .117 | .035 | .200 | .109 | .033 | | |
| 5.0 | .241 | .123 | .036 | .232 | .119 | .035 | .214 | .111 | .033 | .197 | .104 | .031 | .181 | .097 | .029 | | |
| 6.0 | .221 | .111 | .032 | .212 | .107 | .031 | .196 | .100 | .029 | .180 | .094 | .028 | .166 | .087 | .026 | | |
| 7.0 | .204 | .101 | .029 | .196 | .097 | .028 | .181 | .091 | .026 | .166 | .085 | .025 | .153 | .080 | .023 | | |
| 8.0 | .189 | .092 | .026 | .181 | .089 | .025 | .168 | .084 | .024 | .155 | .078 | .023 | .142 | .073 | .021 | | |
| 9.0 | .176 | .085 | .024 | .169 | .082 | .023 | .156 | .077 | .022 | .144 | .072 | .021 | .133 | .067 | .019 | | |
| 10.0 | .165 | .079 | .022 | .158 | .076 | .021 | .146 | .072 | .020 | .135 | .067 | .019 | .125 | .063 | .018 | | |

| pcc | 80% | | | 70% | | | 50% | | | 30% | | | 10% | | | 0 | |
|------|-----------------------|------|------|------|------|------|--|------|------|------|------|------|------|------|------|---|--|
| pw | 50% | 30% | 10% | 50% | 30% | 10% | 50% | 30% | 10% | 50% | 30% | 10% | 50% | 30% | 10% | 0 | |
| pfc | 20% | | | 20% | | | 20% | | | 20% | | | 20% | | | 0 | |
| RCR | RCR:Room Cavity Ratio | | | | | | Ceiling Cavity Exitance Coefficients(CCEC) | | | | | | | | | | |
| 0.0 | .363 | .363 | .363 | .310 | .310 | .310 | .212 | .212 | .212 | .122 | .122 | .122 | .039 | .039 | .039 | | |
| 1.0 | .360 | .330 | .302 | .308 | .283 | .260 | .211 | .195 | .180 | .121 | .113 | .105 | .039 | .036 | .034 | | |
| 2.0 | .353 | .307 | .268 | .303 | .264 | .232 | .207 | .183 | .162 | .120 | .106 | .095 | .038 | .034 | .031 | | |
| 3.0 | .346 | .291 | .247 | .296 | .251 | .214 | .203 | .174 | .150 | .118 | .102 | .089 | .038 | .033 | .029 | | |
| 4.0 | .338 | .278 | .233 | .290 | .241 | .202 | .199 | .168 | .143 | .115 | .098 | .084 | .037 | .032 | .028 | | |
| 5.0 | .330 | .269 | .223 | .284 | .233 | .194 | .195 | .162 | .137 | .113 | .095 | .081 | .036 | .031 | .027 | | |
| 6.0 | .323 | .261 | .216 | .278 | .226 | .188 | .192 | .158 | .133 | .111 | .093 | .079 | .036 | .030 | .026 | | |
| 7.0 | .316 | .254 | .211 | .272 | .221 | .184 | .188 | .155 | .130 | .109 | .091 | .078 | .035 | .030 | .026 | | |
| 8.0 | .309 | .249 | .207 | .266 | .216 | .181 | .184 | .152 | .128 | .107 | .089 | .076 | .035 | .029 | .025 | | |
| 9.0 | .303 | .244 | .204 | .261 | .212 | .178 | .181 | .149 | .127 | .105 | .088 | .075 | .034 | .029 | .025 | | |
| 10.0 | .297 | .240 | .202 | .256 | .208 | .176 | .178 | .147 | .125 | .104 | .087 | .075 | .034 | .028 | .025 | | |

C Range: 0 - 360DEG
 C Interval: 30.0DEG
 Test Speed: HIGH
 Temperature:25.3DEG
 Operators:LPC
 Test Date:2021-12-17

γ Range: 0 - 180DEG
 γ Interval: 1.0DEG
 Test System:EVERFINE GO-2000B_V1 SYSTEM V2.0.362
 Humidity:65.0%
 Test Distance:9.200m [K=1.0000]
 Remarks:

UGR(Unified Glare Rating) Table

| | | | | | | | | | | | |
|---|---------------|------------------|------|------|------|-------------------|----------------|-----------------------|------|------|------|
| Test:U:24.00V I:0.3234A P:7.762W PF:1.000 Freq:50.00Hz Lamp Flux:120.215x1 lm | | | | | | | | | | | |
| NAME: SF21-24V-5050-70-DMX4-RGBW(5000) -G | | | | | | TYPE:硅胶 | | WEIGHT: | | | |
| SPEC.: | | | | | | DIM.: 28mm*11.5mm | | SERIAL No.:2021121707 | | | |
| MFR.: OLYMPIA | | | | | | SUR.:1*0.016 | | Shielding Angle: | | | |
| ceiling/cavity | 0.7 | 0.7 | 0.5 | 0.5 | 0.3 | 0.7 | 0.7 | 0.5 | 0.5 | 0.3 | |
| walls | 0.5 | 0.3 | 0.5 | 0.3 | 0.3 | 0.5 | 0.3 | 0.5 | 0.3 | 0.3 | |
| working plane | 0.2 | 0.2 | 0.2 | 0.2 | 0.2 | 0.2 | 0.2 | 0.2 | 0.2 | 0.2 | |
| Room dimensions | | Viewed crosswise | | | | | Viewed endwise | | | | |
| x = 2H y = 2H | 22.3 | 23.6 | 22.8 | 24.2 | 24.8 | 19.6 | 20.9 | 20.2 | 21.5 | 22.2 | |
| | 3H | 25.1 | 26.3 | 25.7 | 26.9 | 27.6 | 21.1 | 22.3 | 21.7 | 22.9 | 23.6 |
| | 4H | 26.6 | 27.8 | 27.2 | 28.4 | 29.1 | 21.6 | 22.8 | 22.2 | 23.4 | 24.1 |
| | 6H | 28.4 | 29.5 | 29.0 | 30.1 | 30.8 | 22.0 | 23.0 | 22.6 | 23.7 | 24.4 |
| | 8H | 29.3 | 30.4 | 30.0 | 31.0 | 31.8 | 22.0 | 23.1 | 22.7 | 23.7 | 24.5 |
| | 12H | 30.4 | 31.5 | 31.1 | 32.1 | 32.9 | 22.1 | 23.1 | 22.7 | 23.7 | 24.5 |
| 4H | 2H | 22.8 | 24.0 | 23.5 | 24.6 | 25.3 | 21.0 | 22.2 | 21.6 | 22.8 | 23.5 |
| | 3H | 25.9 | 26.9 | 26.6 | 27.6 | 28.4 | 22.8 | 23.8 | 23.4 | 24.5 | 25.2 |
| | 4H | 27.7 | 28.6 | 28.4 | 29.3 | 30.1 | 23.6 | 24.5 | 24.3 | 25.2 | 26.0 |
| | 6H | 29.6 | 30.5 | 30.3 | 31.2 | 32.0 | 24.2 | 25.0 | 24.9 | 25.7 | 26.6 |
| | 8H | 30.7 | 31.5 | 31.4 | 32.2 | 33.1 | 24.4 | 25.2 | 25.1 | 25.9 | 26.8 |
| | 12H | 32.0 | 32.7 | 32.7 | 33.4 | 34.3 | 24.5 | 25.3 | 25.3 | 26.0 | 26.9 |
| 8H | 4H | 28.0 | 28.8 | 28.8 | 29.5 | 30.4 | 24.9 | 25.7 | 25.6 | 26.4 | 27.3 |
| | 6H | 30.3 | 31.0 | 31.1 | 31.7 | 32.6 | 26.0 | 26.7 | 26.8 | 27.4 | 28.3 |
| | 8H | 31.6 | 32.2 | 32.4 | 33.0 | 33.9 | 26.5 | 27.1 | 27.2 | 27.8 | 28.7 |
| | 12H | 33.2 | 33.7 | 33.9 | 34.4 | 35.4 | 26.9 | 27.4 | 27.6 | 28.2 | 29.1 |
| 12H | 4H | 28.1 | 28.8 | 28.8 | 29.5 | 30.4 | 25.4 | 26.1 | 26.1 | 26.8 | 27.7 |
| | 6H | 30.5 | 31.0 | 31.2 | 31.8 | 32.7 | 26.7 | 27.3 | 27.5 | 28.1 | 29.0 |
| | 8H | 31.9 | 32.4 | 32.7 | 33.2 | 34.1 | 27.4 | 27.9 | 28.2 | 28.7 | 29.6 |
| Variations with the observer position at spacings: | | | | | | | | | | | |
| S = 1.0H | + 0.1 / - 0.1 | | | | | + 0.1 / - 0.1 | | | | | |
| 1.5H | + 0.2 / - 0.3 | | | | | + 0.2 / - 0.3 | | | | | |
| 2.0H | + 0.3 / - 0.4 | | | | | + 0.3 / - 0.4 | | | | | |

CIE Pub.117, 120.2 lm Total Lamp Luminous Flux Correct (8log(F/F0) = -7.4)

C Range: 0 - 360DEG
C Interval: 30.0DEG
Test Speed: HIGH
Temperature:25.3DEG
Operators:LPC
Test Date:2021-12-17

γ Range: 0 - 180DEG
γ Interval: 1.0DEG
Test System:EVERFINE GO-2000B_V1 SYSTEM V2.0.362
Humidity:65.0%
Test Distance:9.200m [K=1.0000]
Remarks:

UTILIZATION FACTORS TABLE

| | | |
|---|-------------------|-----------------------|
| Test:U:24.00V I:0.3234A P:7.762W PF:1.000 Freq:50.00Hz Lamp Flux:120.215x1 lm | | |
| NAME: SF21-24V-5050-70-DMX4-RGBW(5000) -G | TYPE: 硅胶 | WEIGHT: |
| SPEC.: | DIM.: 28mm*11.5mm | SERIAL No.:2021121707 |
| MFR.: OLYMPIA | SUR.:1*0.016 | Shielding Angle: |

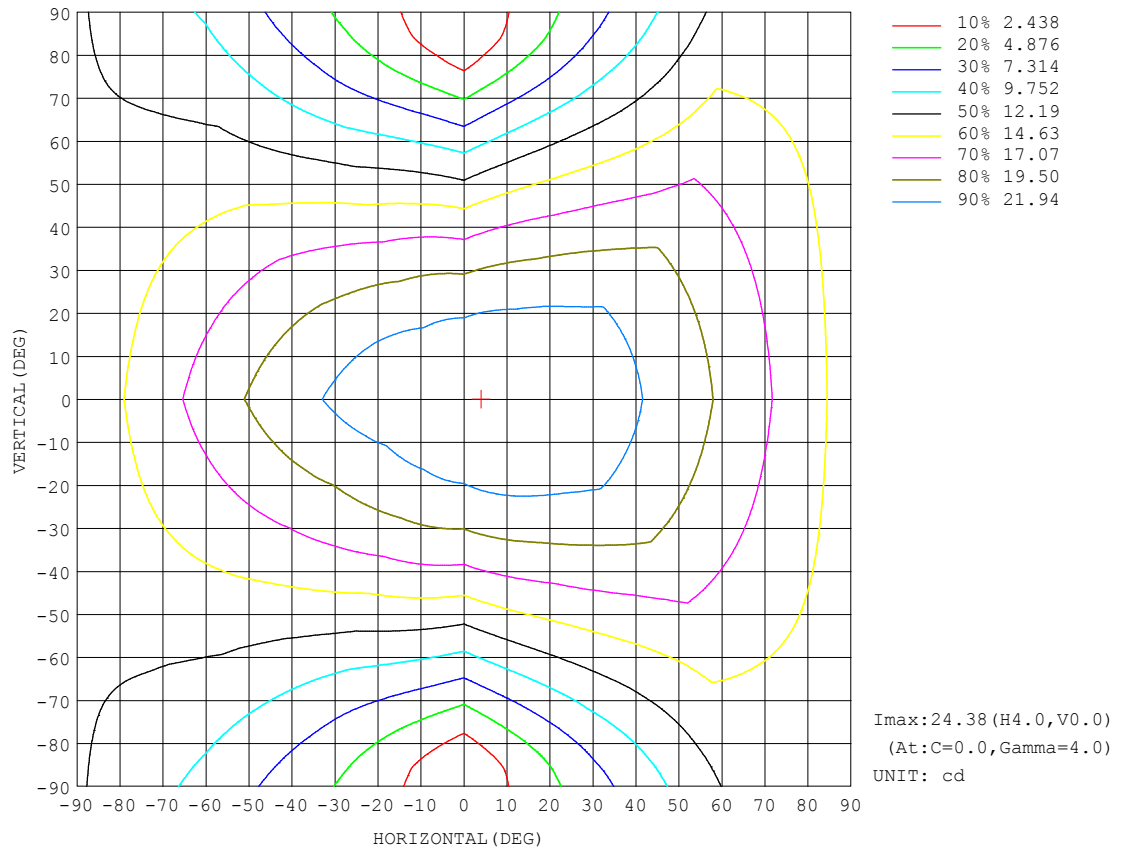
| REFLECTANCE | | | | | | | | | | |
|----------------------------------|--|-----|-----------|-----|-----|-----|-----|---------------|-----|--------|
| Ceiling | 0.8 | 0.8 | 0.8 | 0.7 | 0.7 | 0.7 | 0.5 | 0.5 | 0.5 | 0 |
| Walls | 0.7 | 0.5 | 0.3 | 0.7 | 0.5 | 0.3 | 0.7 | 0.5 | 0.3 | 0 |
| Working plane | 0.2 | 0.2 | 0.2 | 0.2 | 0.2 | 0.2 | 0.2 | 0.2 | 0.2 | 0 |
| ROOM INDEX | UTILIZATION FACTORS (PERCENT) $k(RI) \times RCR = 5$ | | | | | | | | | |
| $k = 0.60$ | 46 | 34 | 27 | 45 | 33 | 26 | 43 | 32 | 26 | 19 |
| 0.80 | 55 | 42 | 34 | 54 | 41 | 34 | 50 | 40 | 33 | 25 |
| 1.00 | 63 | 50 | 41 | 61 | 49 | 41 | 57 | 49 | 39 | 30 |
| 1.25 | 70 | 57 | 48 | 67 | 55 | 47 | 62 | 53 | 45 | 35 |
| 1.50 | 75 | 62 | 54 | 72 | 61 | 53 | 67 | 57 | 50 | 39 |
| 2.00 | 82 | 71 | 62 | 79 | 69 | 61 | 73 | 64 | 58 | 45 |
| 2.50 | 87 | 76 | 68 | 83 | 74 | 66 | 76 | 68 | 62 | 49 |
| 3.00 | 91 | 81 | 73 | 87 | 78 | 71 | 79 | 72 | 67 | 52 |
| 4.00 | 95 | 87 | 80 | 91 | 84 | 78 | 83 | 77 | 72 | 56 |
| 5.00 | 98 | 91 | 85 | 94 | 88 | 82 | 86 | 81 | 76 | 59 |
| ROOM INDEX | UF (total) | | | | | | | | | Direct |
| According to DIN EN 13032-2 2004 | | | Suspended | | | | | SHRNOM = 1.25 | | |

C Range: 0 - 360DEG
C Interval: 30.0DEG
Test Speed: HIGH
Temperature:25.3DEG
Operators:LPC
Test Date:2021-12-17

γ Range: 0 - 180DEG
 γ Interval: 1.0DEG
Test System:EVERFINE GO-2000B_V1 SYSTEM V2.0.362
Humidity:65.0%
Test Distance:9.200m [K=1.0000]
Remarks:

ISOCANDELA DIAGRAM

| | | |
|---|-------------------|-----------------------|
| Test:U:24.00V I:0.3234A P:7.762W PF:1.000 Freq:50.00Hz Lamp Flux:120.215x1 lm | | |
| NAME: SF21-24V-5050-70-DMX4-RGBW(5000) -G | TYPE: 硅胶 | WEIGHT: |
| SPEC.: | DIM.: 28mm*11.5mm | SERIAL No.:2021121707 |
| MFR.: OLYMPIA | SUR.:1*0.016 | Shielding Angle: |

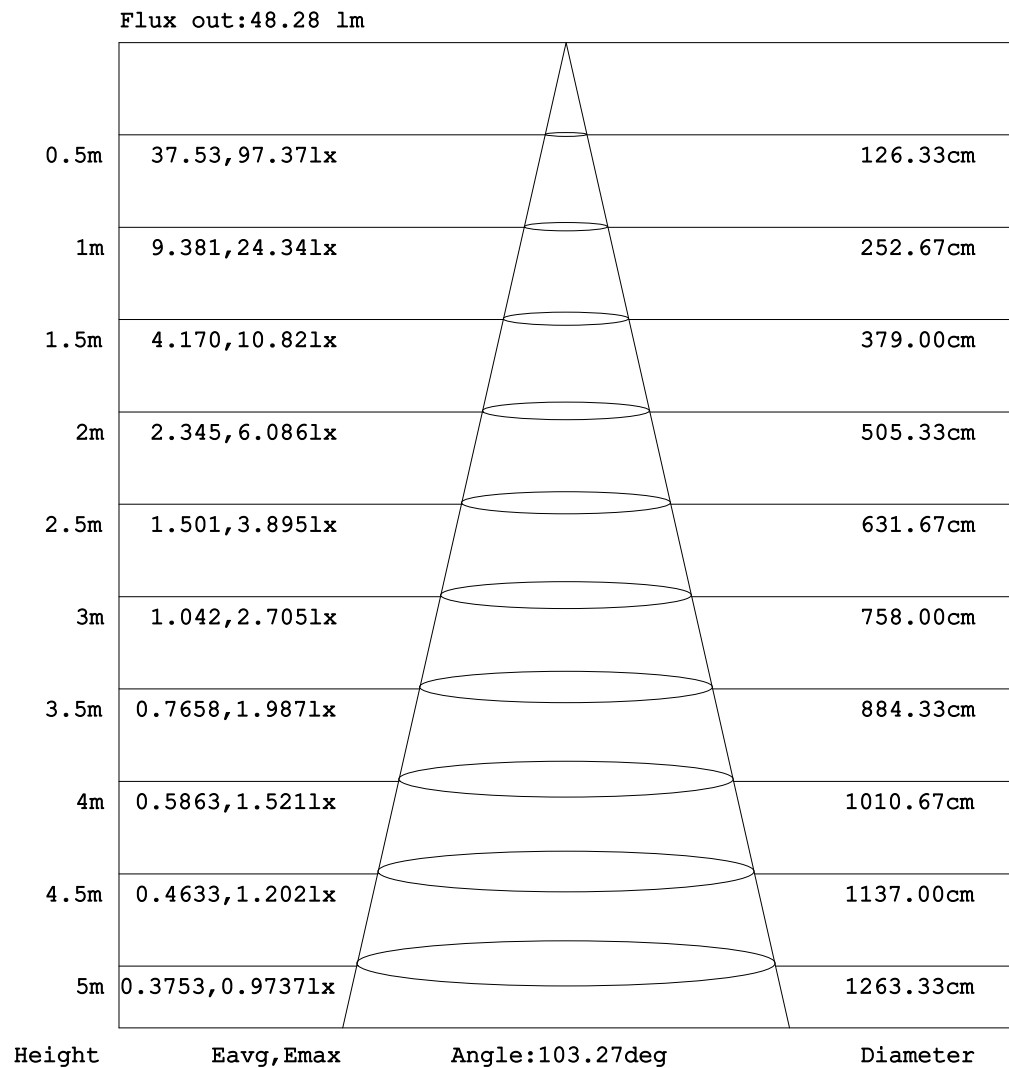


C Range: 0 - 360DEG
C Interval: 30.0DEG
Test Speed: HIGH
Temperature:25.3DEG
Operators:LPC
Test Date:2021-12-17

γ Range: 0 - 180DEG
 γ Interval: 1.0DEG
Test System:EVERFINE GO-2000B_V1 SYSTEM V2.0.362
Humidity:65.0%
Test Distance:9.200m [K=1.0000]
Remarks:

AAI Figure

| | | |
|---|-------------------|-----------------------|
| Test:U:24.00V I:0.3234A P:7.762W PF:1.000 Freq:50.00Hz Lamp Flux:120.215x1 lm | | |
| NAME: SF21-24V-5050-70-DMX4-RGBW(5000) -G | TYPE: 硅胶 | WEIGHT: |
| SPEC.: | DIM.: 28mm*11.5mm | SERIAL No.:2021121707 |
| MFR.: OLYMPIA | SUR.:1*0.016 | Shielding Angle: |



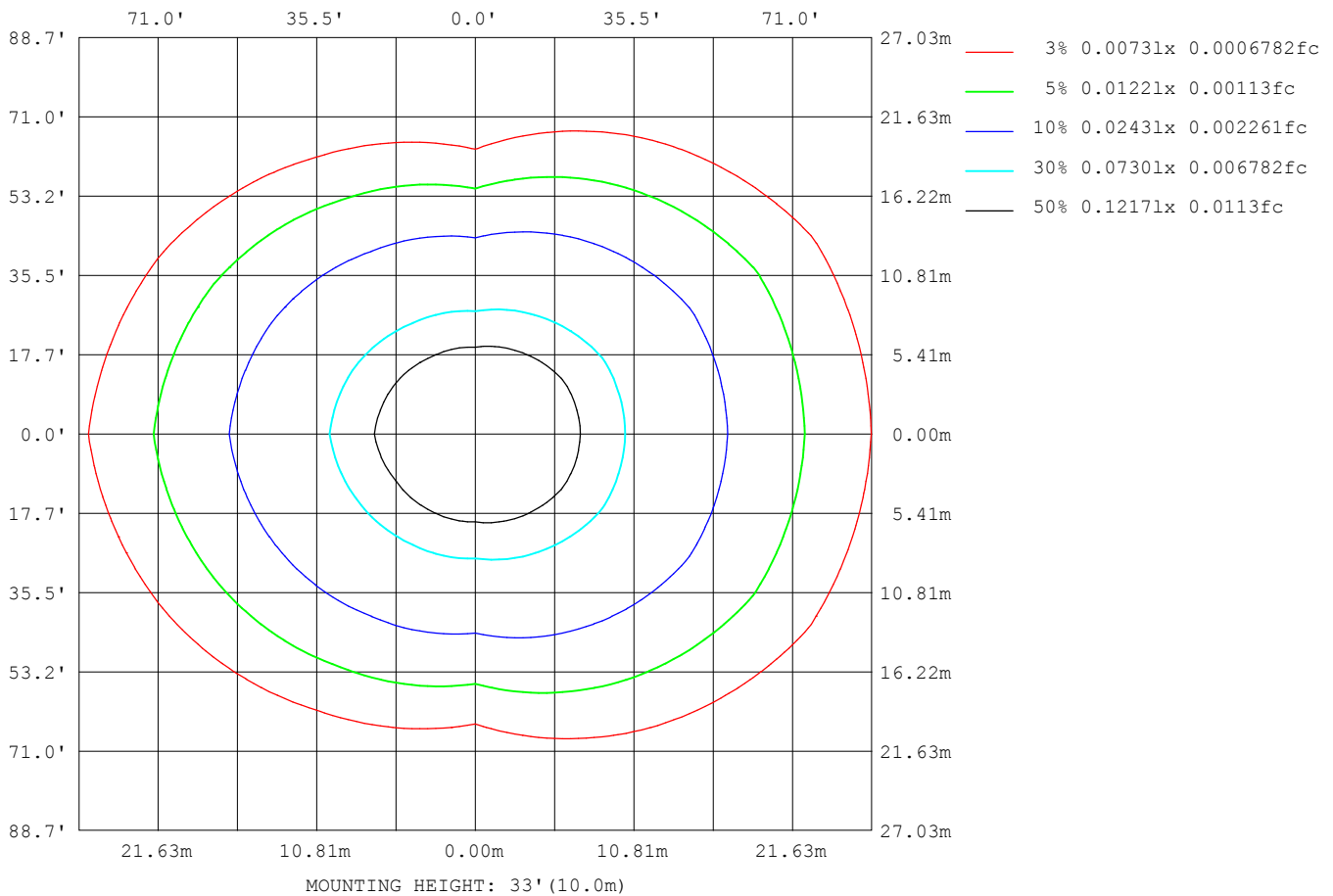
Note: The Curves indicate the illuminated area and the average illumination when the luminaire is at different distance.

C Range: 0 - 360DEG
 C Interval: 30.0DEG
 Test Speed: HIGH
 Temperature: 25.3DEG
 Operators: LPC
 Test Date: 2021-12-17

γ Range: 0 - 180DEG
 γ Interval: 1.0DEG
 Test System: EVERFINE GO-2000B_V1 SYSTEM V2.0.362
 Humidity: 65.0%
 Test Distance: 9.200m [K=1.0000]
 Remarks:

ISOLUX DIAGRAM

| | | |
|---|-------------------|-----------------------|
| Test:U:24.00V I:0.3234A P:7.762W PF:1.000 Freq:50.00Hz Lamp Flux:120.215x1 lm | | |
| NAME: SF21-24V-5050-70-DMX4-RGBW(5000) -G | TYPE: 硅胶 | WEIGHT: |
| SPEC.: | DIM.: 28mm*11.5mm | SERIAL No.:2021121707 |
| MFR.: OLYMPIA | SUR.:1*0.016 | Shielding Angle: |



C Range: 0 - 360DEG
C Interval: 30.0DEG
Test Speed: HIGH
Temperature:25.3DEG
Operators:LPC
Test Date:2021-12-17

γ Range: 0 - 180DEG
 γ Interval: 1.0DEG
Test System:EVERFINE GO-2000B_V1 SYSTEM V2.0.362
Humidity:65.0%
Test Distance:9.200m [K=1.0000]
Remarks:

LED Avg.L Report

| | | |
|---|-------------------|-----------------------|
| Test:U:24.00V I:0.3234A P:7.762W PF:1.000 Freq:50.00Hz Lamp Flux:120.215x1 lm | | |
| NAME: SF21-24V-5050-70-DMX4-RGBW(5000) -G | TYPE:硅胶 | WEIGHT: |
| SPEC.: | DIM.: 28mm*11.5mm | SERIAL No.:2021121707 |
| MFR.: OLYMPIA | SUR.:1*0.016 | Shielding Angle: |

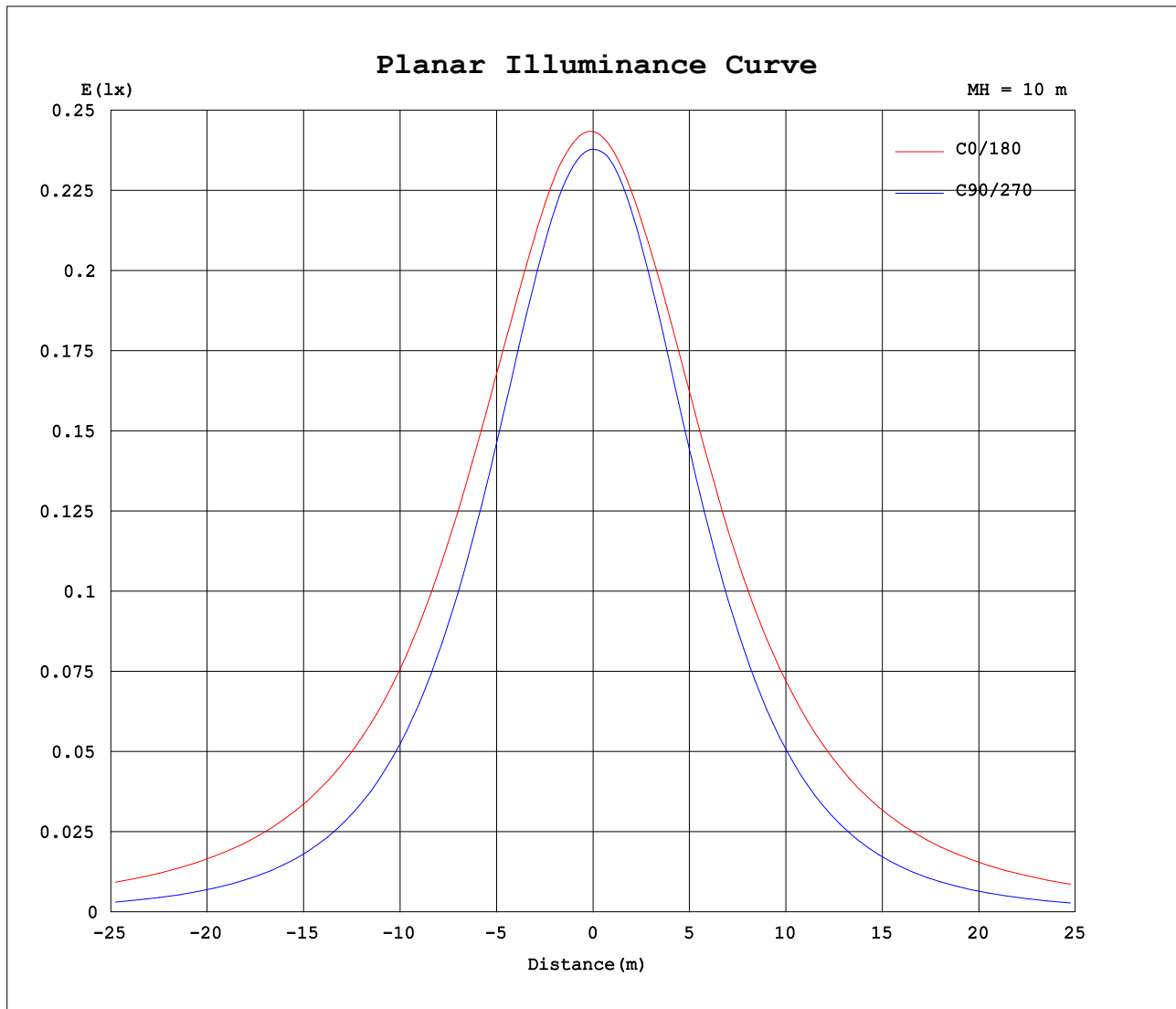
| AvgL | cd/m2 |
|------------------|-------|
| L_0~180 (65) av | 2617 |
| L_0~180 (75) av | 3844 |
| L_0~180 (85) av | 10039 |
| L_90~270 (65) av | 1029 |
| L_90~270 (75) av | 758 |
| L_90~270 (85) av | 290 |
| L_45 (65) av | 2011 |
| L_45 (75) av | 2744 |
| L_45 (85) av | 6714 |

Standard: GB/T 29293-2012

C Range: 0 - 360DEG
C Interval: 30.0DEG
Test Speed: HIGH
Temperature:25.3DEG
Operators:LPC
Test Date:2021-12-17

γ Range: 0 - 180DEG
γ Interval: 1.0DEG
Test System:EVERFINE GO-2000B_V1 SYSTEM V2.0.362
Humidity:65.0%
Test Distance:9.200m [K=1.0000]
Remarks:

Planar Illuminance Curve



C Range: 0 - 360DEG
C Interval: 30.0DEG
Test Speed: HIGH
Temperature: 25.3DEG
Operators: LPC
Test Date: 2021-12-17

γ Range: 0 - 180DEG
 γ Interval: 1.0DEG
Test System: EVERFINE GO-2000B_V1 SYSTEM V2.0.362
Humidity: 65.0%
Test Distance: 9.200m [K=1.0000]
Remarks:

LUMINOUS DISTRIBUTION INTENSITY DATA

| | | |
|---|-------------------|-----------------------|
| Test:U:24.00V I:0.3234A P:7.762W PF:1.000 Freq:50.00Hz Lamp Flux:120.215x1 lm | | |
| NAME: SF21-24V-5050-70-DMX4-RGBW(5000) -G | TYPE: 硅胶 | WEIGHT: |
| SPEC.: | DIM.: 28mm*11.5mm | SERIAL No.:2021121707 |
| MFR.: OLYMPIA | SUR.:1*0.016 | Shielding Angle: |

Table--1

UNIT: cd

| C (DEG) γ (DEG) | 0 | 30 | 60 | 90 | 120 | 150 | 180 | 210 | 240 | 270 | 300 | 330 | | | | | | |
|--------------------|------|------|------|------|------|------|------|------|------|------|------|------|--|--|--|--|--|--|
| 0 | 24.3 | 24.2 | 23.9 | 23.8 | 23.8 | 23.8 | 24.3 | 24.2 | 23.9 | 23.8 | 23.8 | 23.8 | | | | | | |
| 5 | 24.4 | 24.3 | 23.9 | 23.7 | 23.5 | 23.4 | 24.2 | 23.9 | 23.7 | 23.7 | 23.8 | 24.0 | | | | | | |
| 10 | 24.3 | 24.3 | 23.9 | 23.3 | 23.1 | 23.1 | 23.9 | 23.5 | 23.2 | 23.3 | 23.6 | 24.0 | | | | | | |
| 15 | 24.1 | 24.1 | 23.4 | 22.7 | 22.5 | 22.6 | 23.6 | 23.1 | 22.6 | 22.6 | 23.2 | 24.0 | | | | | | |
| 20 | 23.8 | 23.8 | 22.8 | 21.9 | 21.7 | 22.1 | 23.2 | 22.5 | 21.8 | 21.7 | 22.5 | 23.7 | | | | | | |
| 25 | 23.5 | 23.3 | 22.0 | 20.8 | 20.8 | 21.3 | 22.8 | 21.9 | 20.8 | 20.6 | 21.7 | 23.3 | | | | | | |
| 30 | 23.2 | 22.8 | 21.1 | 19.5 | 19.7 | 20.5 | 22.3 | 21.1 | 19.7 | 19.2 | 20.8 | 22.8 | | | | | | |
| 35 | 22.7 | 22.2 | 20.0 | 18.1 | 18.5 | 19.7 | 21.7 | 20.2 | 18.5 | 17.7 | 19.8 | 22.3 | | | | | | |
| 40 | 22.1 | 21.6 | 18.8 | 16.5 | 17.2 | 18.8 | 21.0 | 19.3 | 17.2 | 16.1 | 18.8 | 21.7 | | | | | | |
| 45 | 21.4 | 20.9 | 17.6 | 14.8 | 15.8 | 17.9 | 20.4 | 18.4 | 15.8 | 14.4 | 17.6 | 21.1 | | | | | | |
| 50 | 20.7 | 20.0 | 16.3 | 13.0 | 14.4 | 16.9 | 19.7 | 17.4 | 14.4 | 12.5 | 16.3 | 20.3 | | | | | | |
| 55 | 20.0 | 19.0 | 15.0 | 11.2 | 13.0 | 15.8 | 18.9 | 16.4 | 13.0 | 10.6 | 15.0 | 19.5 | | | | | | |
| 60 | 19.1 | 18.1 | 13.7 | 9.21 | 11.5 | 14.8 | 18.0 | 15.3 | 11.6 | 8.64 | 13.7 | 18.5 | | | | | | |
| 65 | 18.3 | 17.1 | 12.3 | 7.22 | 10.1 | 13.8 | 17.1 | 14.3 | 10.1 | 6.70 | 12.3 | 17.6 | | | | | | |
| 70 | 17.4 | 16.1 | 10.9 | 5.25 | 8.72 | 12.9 | 16.3 | 13.3 | 8.74 | 4.75 | 10.9 | 16.7 | | | | | | |
| 75 | 16.5 | 15.1 | 9.55 | 3.39 | 7.52 | 11.9 | 15.4 | 12.4 | 7.50 | 2.89 | 9.60 | 15.7 | | | | | | |
| 80 | 15.5 | 14.1 | 8.28 | 1.71 | 6.49 | 10.9 | 14.5 | 11.4 | 6.42 | 1.34 | 8.40 | 14.8 | | | | | | |
| 85 | 14.5 | 13.2 | 7.18 | 0.50 | 5.57 | 9.93 | 13.5 | 10.4 | 5.47 | 0.31 | 7.35 | 13.9 | | | | | | |
| 90 | 13.5 | 12.2 | 6.37 | 0.35 | 4.84 | 9.03 | 12.5 | 9.49 | 4.74 | 0.24 | 6.52 | 13.0 | | | | | | |
| 95 | 12.5 | 11.4 | 5.61 | 0.35 | 4.30 | 8.24 | 11.5 | 8.65 | 4.21 | 0.25 | 5.87 | 12.1 | | | | | | |
| 100 | 11.2 | 9.55 | 4.37 | 0.38 | 3.90 | 6.95 | 10.3 | 7.29 | 3.75 | 0.27 | 5.35 | 10.3 | | | | | | |
| 105 | 10.3 | 9.02 | 4.06 | 0.44 | 2.91 | 6.54 | 9.45 | 6.84 | 2.87 | 0.28 | 4.57 | 9.75 | | | | | | |
| 110 | 9.38 | 8.35 | 3.95 | 0.46 | 2.76 | 5.75 | 8.59 | 6.10 | 2.62 | 0.29 | 4.37 | 9.01 | | | | | | |
| 115 | 8.56 | 7.71 | 3.92 | 0.49 | 2.51 | 5.19 | 7.37 | 5.51 | 2.37 | 0.30 | 3.95 | 8.31 | | | | | | |
| 120 | 7.82 | 7.13 | 3.68 | 0.53 | 2.33 | 4.71 | 6.67 | 4.91 | 2.28 | 0.36 | 3.61 | 7.66 | | | | | | |
| 125 | 7.17 | 6.64 | 3.32 | 0.58 | 2.17 | 4.29 | 5.98 | 4.34 | 2.13 | 0.43 | 3.39 | 6.97 | | | | | | |
| 130 | 6.57 | 6.01 | 3.09 | 0.61 | 1.94 | 3.84 | 5.37 | 3.94 | 1.90 | 0.52 | 3.12 | 6.41 | | | | | | |
| 135 | 5.95 | 4.94 | 2.82 | 0.64 | 1.75 | 3.39 | 4.70 | 3.52 | 1.73 | 0.62 | 2.84 | 5.04 | | | | | | |
| 140 | 5.36 | 4.06 | 2.61 | 0.67 | 1.55 | 2.96 | 4.23 | 3.00 | 1.59 | 0.70 | 2.53 | 4.45 | | | | | | |
| 145 | 4.71 | 3.37 | 2.40 | 0.69 | 1.36 | 2.45 | 3.55 | 2.63 | 1.45 | 0.78 | 2.28 | 3.73 | | | | | | |
| 150 | 4.03 | 2.70 | 2.19 | 0.78 | 1.11 | 2.04 | 3.13 | 2.29 | 1.20 | 0.92 | 2.03 | 3.23 | | | | | | |
| 155 | 3.42 | 2.18 | 2.13 | 0.87 | 0.81 | 1.70 | 2.76 | 1.91 | 0.90 | 0.99 | 2.07 | 2.72 | | | | | | |
| 160 | 2.85 | 1.80 | 2.13 | 0.97 | 0.77 | 1.32 | 2.37 | 1.66 | 0.68 | 1.02 | 2.07 | 2.26 | | | | | | |
| 165 | 2.44 | 1.62 | 2.13 | 1.05 | 0.58 | 0.82 | 1.94 | 1.24 | 0.57 | 1.08 | 2.07 | 1.89 | | | | | | |
| 170 | 1.26 | 1.59 | 2.02 | 1.10 | 0.57 | 0.73 | 0.99 | 0.65 | 0.57 | 1.10 | 1.98 | 1.89 | | | | | | |
| 175 | 1.05 | 1.50 | 1.94 | 1.11 | 0.55 | 0.61 | 0.73 | 0.59 | 0.57 | 1.17 | 1.89 | 1.83 | | | | | | |
| 180 | 0.57 | 0.56 | 1.05 | 1.12 | 1.15 | 0.99 | 0.56 | 0.56 | 0.80 | 1.20 | 1.18 | 0.99 | | | | | | |

C Range: 0 - 360DEG
C Interval: 30.0DEG
Test Speed: HIGH
Temperature:25.3DEG
Operators:LPC
Test Date:2021-12-17

γ Range: 0 - 180DEG
γ Interval: 1.0DEG
Test System:EVERFINE GO-2000B_V1 SYSTEM V2.0.362
Humidity:65.0%
Test Distance:9.200m [K=1.0000]
Remarks:

Photometric Data Table [cd]

| G/C | 0.0 | 30.0 | 60.0 | 90.0 | 120.0 | 150.0 | 180.0 | 210.0 | 240.0 | 270.0 |
|-------|--------|--------|-------|--------|--------|--------|--------|--------|--------|--------|
| 0.0 | 24.33 | 24.16 | 23.89 | 23.78 | 23.80 | 23.75 | 24.33 | 24.16 | 23.89 | 23.78 |
| 3.0 | 24.37 | 24.26 | 23.94 | 23.74 | 23.67 | 23.59 | 24.25 | 24.02 | 23.77 | 23.78 |
| 6.0 | 24.36 | 24.26 | 23.92 | 23.63 | 23.48 | 23.37 | 24.13 | 23.82 | 23.59 | 23.68 |
| 9.0 | 24.34 | 24.26 | 23.90 | 23.43 | 23.23 | 23.15 | 23.97 | 23.60 | 23.34 | 23.44 |
| 12.0 | 24.25 | 24.22 | 23.71 | 23.11 | 22.89 | 22.91 | 23.78 | 23.35 | 22.99 | 23.08 |
| 15.0 | 24.11 | 24.10 | 23.45 | 22.70 | 22.50 | 22.63 | 23.57 | 23.08 | 22.57 | 22.64 |
| 18.0 | 23.93 | 23.95 | 23.10 | 22.22 | 22.06 | 22.30 | 23.37 | 22.78 | 22.10 | 22.11 |
| 21.0 | 23.76 | 23.71 | 22.69 | 21.67 | 21.56 | 21.93 | 23.16 | 22.42 | 21.59 | 21.50 |
| 24.0 | 23.60 | 23.42 | 22.21 | 21.03 | 21.00 | 21.49 | 22.92 | 22.02 | 21.01 | 20.79 |
| 27.0 | 23.42 | 23.10 | 21.68 | 20.31 | 20.40 | 21.00 | 22.63 | 21.57 | 20.37 | 20.05 |
| 30.0 | 23.19 | 22.78 | 21.09 | 19.54 | 19.73 | 20.48 | 22.30 | 21.05 | 19.71 | 19.23 |
| 33.0 | 22.92 | 22.45 | 20.45 | 18.70 | 19.03 | 19.98 | 21.94 | 20.52 | 19.01 | 18.35 |
| 36.0 | 22.62 | 22.10 | 19.77 | 17.80 | 18.27 | 19.49 | 21.52 | 20.00 | 18.26 | 17.42 |
| 39.0 | 22.27 | 21.73 | 19.08 | 16.88 | 17.48 | 19.00 | 21.13 | 19.51 | 17.48 | 16.44 |
| 42.0 | 21.88 | 21.31 | 18.35 | 15.88 | 16.65 | 18.46 | 20.78 | 18.99 | 16.66 | 15.42 |
| 45.0 | 21.45 | 20.85 | 17.59 | 14.84 | 15.81 | 17.86 | 20.39 | 18.44 | 15.81 | 14.38 |
| 48.0 | 21.00 | 20.34 | 16.83 | 13.78 | 14.97 | 17.27 | 19.97 | 17.85 | 14.98 | 13.28 |
| 51.0 | 20.59 | 19.81 | 16.06 | 12.67 | 14.14 | 16.65 | 19.51 | 17.24 | 14.15 | 12.15 |
| 54.0 | 20.13 | 19.24 | 15.28 | 11.54 | 13.28 | 16.04 | 19.03 | 16.62 | 13.31 | 11.01 |
| 57.0 | 19.65 | 18.64 | 14.48 | 10.38 | 12.41 | 15.42 | 18.52 | 15.98 | 12.44 | 9.839 |
| 60.0 | 19.14 | 18.11 | 13.67 | 9.214 | 11.54 | 14.81 | 18.00 | 15.35 | 11.58 | 8.642 |
| 63.0 | 18.62 | 17.52 | 12.84 | 8.012 | 10.66 | 14.24 | 17.49 | 14.73 | 10.71 | 7.487 |
| 66.0 | 18.08 | 16.94 | 11.98 | 6.832 | 9.783 | 13.64 | 16.96 | 14.14 | 9.837 | 6.326 |
| 69.0 | 17.54 | 16.34 | 11.16 | 5.641 | 8.974 | 13.06 | 16.44 | 13.54 | 9.008 | 5.139 |
| 72.0 | 17.01 | 15.70 | 10.33 | 4.484 | 8.220 | 12.46 | 15.91 | 12.95 | 8.224 | 3.999 |
| 75.0 | 16.46 | 15.11 | 9.552 | 3.390 | 7.521 | 11.88 | 15.37 | 12.37 | 7.501 | 2.888 |
| 78.0 | 15.89 | 14.52 | 8.778 | 2.329 | 6.878 | 11.30 | 14.82 | 11.80 | 6.823 | 1.872 |
| 81.0 | 15.32 | 13.94 | 8.044 | 1.420 | 6.294 | 10.70 | 14.28 | 11.21 | 6.215 | 1.063 |
| 84.0 | 14.73 | 13.37 | 7.380 | 0.6967 | 5.742 | 10.13 | 13.69 | 10.62 | 5.652 | 0.3990 |
| 87.0 | 14.12 | 12.78 | 6.812 | 0.3658 | 5.254 | 9.573 | 13.06 | 10.04 | 5.155 | 0.2464 |
| 90.0 | 13.53 | 12.23 | 6.369 | 0.3524 | 4.836 | 9.030 | 12.45 | 9.490 | 4.738 | 0.2413 |
| 93.0 | 12.90 | 11.71 | 5.987 | 0.3482 | 4.494 | 8.552 | 11.86 | 8.977 | 4.396 | 0.2487 |
| 96.0 | 12.28 | 11.18 | 5.341 | 0.3518 | 4.208 | 8.090 | 11.29 | 8.495 | 4.120 | 0.2562 |
| 99.0 | 11.69 | 10.13 | 4.034 | 0.3620 | 3.976 | 7.045 | 10.59 | 7.407 | 3.839 | 0.2636 |
| 102.0 | 10.86 | 9.377 | 4.418 | 0.4143 | 3.541 | 6.799 | 9.954 | 7.137 | 3.405 | 0.2714 |
| 105.0 | 10.29 | 9.020 | 4.061 | 0.4353 | 2.911 | 6.542 | 9.446 | 6.836 | 2.870 | 0.2797 |
| 108.0 | 9.742 | 8.618 | 4.091 | 0.4523 | 2.800 | 6.225 | 8.919 | 6.405 | 2.723 | 0.2847 |
| 111.0 | 9.219 | 8.226 | 3.945 | 0.4674 | 2.704 | 5.618 | 8.224 | 6.017 | 2.547 | 0.2897 |
| 114.0 | 8.711 | 7.834 | 3.894 | 0.4875 | 2.553 | 5.316 | 7.581 | 5.600 | 2.407 | 0.2947 |
| 117.0 | 8.254 | 7.467 | 3.905 | 0.5076 | 2.398 | 4.985 | 6.950 | 5.308 | 2.367 | 0.2997 |
| 120.0 | 7.822 | 7.131 | 3.680 | 0.5329 | 2.332 | 4.714 | 6.673 | 4.911 | 2.276 | 0.3566 |
| 123.0 | 7.425 | 6.819 | 3.277 | 0.5630 | 2.237 | 4.467 | 6.211 | 4.549 | 2.196 | 0.3969 |
| 126.0 | 7.052 | 6.543 | 3.307 | 0.5931 | 2.121 | 4.211 | 5.864 | 4.262 | 2.085 | 0.4522 |
| 129.0 | 6.696 | 6.235 | 3.157 | 0.6131 | 1.971 | 3.934 | 5.492 | 4.016 | 1.930 | 0.5123 |
| 132.0 | 6.324 | 5.597 | 2.976 | 0.6232 | 1.865 | 3.643 | 5.079 | 3.760 | 1.794 | 0.5627 |
| 135.0 | 5.952 | 4.943 | 2.820 | 0.6433 | 1.749 | 3.387 | 4.698 | 3.519 | 1.729 | 0.6231 |
| 138.0 | 5.595 | 4.386 | 2.689 | 0.6584 | 1.629 | 3.125 | 4.426 | 3.277 | 1.653 | 0.6834 |
| 141.0 | 5.243 | 3.904 | 2.564 | 0.6735 | 1.513 | 2.879 | 4.129 | 2.951 | 1.558 | 0.7185 |
| 144.0 | 4.846 | 3.517 | 2.438 | 0.6835 | 1.413 | 2.542 | 3.683 | 2.664 | 1.497 | 0.7688 |
| 147.0 | 4.429 | 3.115 | 2.307 | 0.6989 | 1.277 | 2.341 | 3.277 | 2.493 | 1.361 | 0.8340 |
| 150.0 | 4.027 | 2.703 | 2.187 | 0.7843 | 1.106 | 2.040 | 3.129 | 2.287 | 1.196 | 0.9246 |
| 153.0 | 3.655 | 2.361 | 2.121 | 0.8445 | 0.9605 | 1.834 | 2.919 | 2.076 | 1.010 | 0.9548 |
| 156.0 | 3.298 | 2.090 | 2.130 | 0.8947 | 0.7992 | 1.628 | 2.688 | 1.875 | 0.8386 | 0.9901 |
| 159.0 | 2.896 | 1.869 | 2.129 | 0.9450 | 0.8991 | 1.396 | 2.437 | 1.719 | 0.7680 | 1.010 |
| 162.0 | 2.725 | 1.703 | 2.128 | 1.000 | 0.6642 | 1.120 | 2.215 | 1.513 | 0.5927 | 1.045 |
| 165.0 | 2.439 | 1.623 | 2.126 | 1.046 | 0.5780 | 0.8243 | 1.944 | 1.242 | 0.5662 | 1.080 |
| 168.0 | 1.345 | 1.601 | 2.056 | 1.086 | 0.5730 | 0.7781 | 1.075 | 0.9507 | 0.5699 | 1.096 |
| 171.0 | 1.217 | 1.578 | 2.000 | 1.103 | 0.5663 | 0.7047 | 0.9292 | 0.6423 | 0.5709 | 1.106 |
| 174.0 | 1.086 | 1.513 | 1.955 | 1.109 | 0.5562 | 0.6313 | 0.7834 | 0.6051 | 0.5719 | 1.166 |
| 177.0 | 0.9554 | 1.452 | 1.885 | 1.116 | 0.5528 | 0.5579 | 0.6076 | 0.5680 | 0.5729 | 1.171 |
| 180.0 | 0.5679 | 0.5629 | 1.050 | 1.116 | 1.151 | 0.9850 | 0.5629 | 0.5579 | 0.8041 | 1.201 |
| G/C | 300.0 | 330.0 | | | | | | | | |
| 0.0 | 23.80 | 23.75 | | | | | | | | |
| 3.0 | 23.83 | 23.91 | | | | | | | | |
| 6.0 | 23.80 | 24.00 | | | | | | | | |
| 9.0 | 23.70 | 24.02 | | | | | | | | |
| 12.0 | 23.50 | 24.01 | | | | | | | | |
| 15.0 | 23.20 | 23.95 | | | | | | | | |
| 18.0 | 22.84 | 23.80 | | | | | | | | |
| 21.0 | 22.39 | 23.61 | | | | | | | | |
| 24.0 | 21.91 | 23.39 | | | | | | | | |
| 27.0 | 21.37 | 23.13 | | | | | | | | |
| 30.0 | 20.81 | 22.82 | | | | | | | | |

C Range: 0 - 360DEG
 C Interval: 30.0DEG
 Test Speed: HIGH
 Temperature: 25.3DEG
 Operators: LPC
 Test Date: 2021-12-17

γ Range: 0 - 180DEG
 γ Interval: 1.0DEG
 Test System: EVERFINE GO-2000B_V1 SYSTEM V2.0.362
 Humidity: 65.0%
 Test Distance: 9.200m [K=1.0000]
 Remarks:

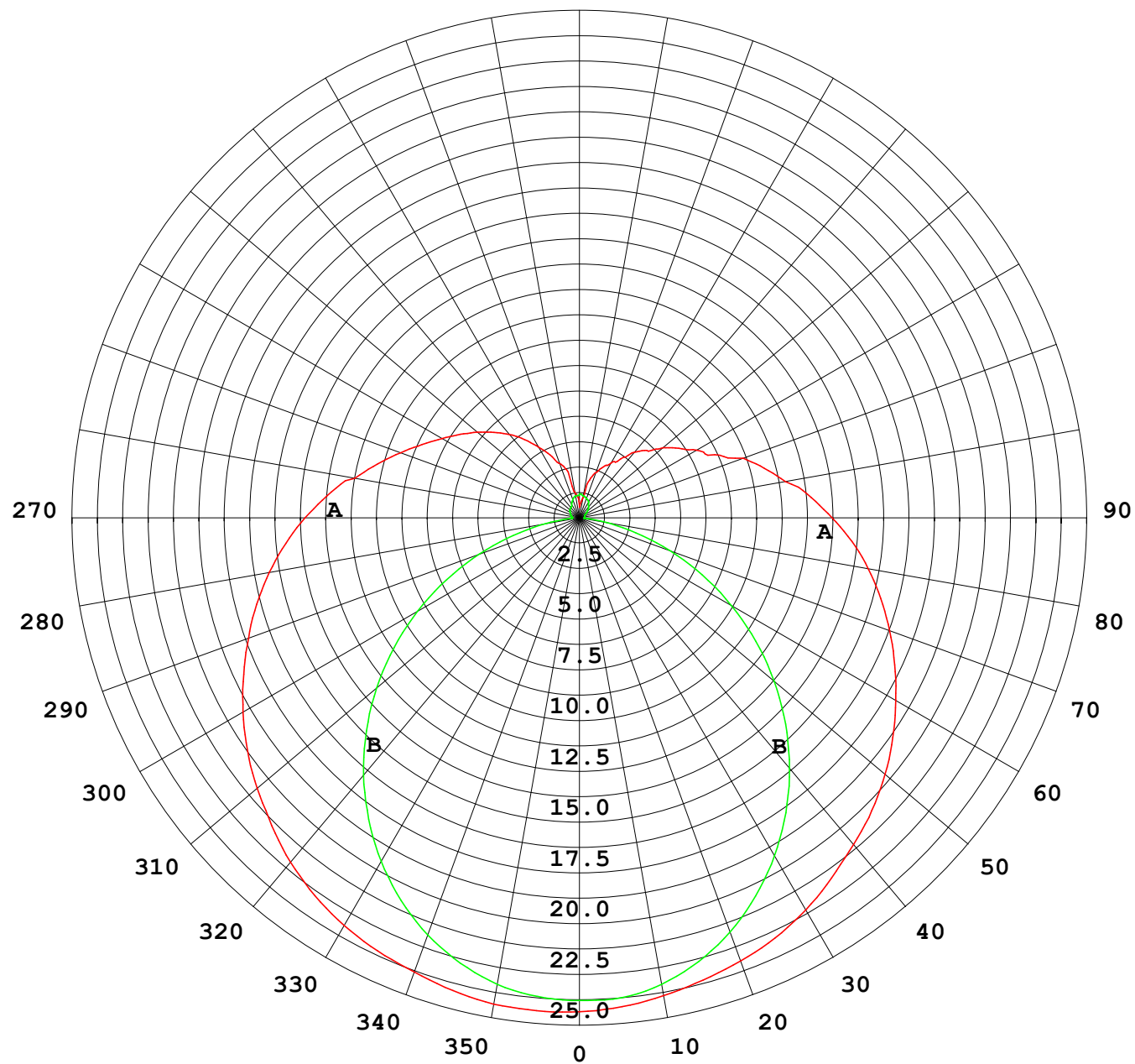
Photometric Data Table [cd]

| | | |
|-------|-------|--------|
| 33.0 | 20.23 | 22.50 |
| 36.0 | 19.62 | 22.17 |
| 39.0 | 18.98 | 21.85 |
| 42.0 | 18.30 | 21.48 |
| 45.0 | 17.58 | 21.07 |
| 48.0 | 16.82 | 20.63 |
| 51.0 | 16.05 | 20.15 |
| 54.0 | 15.27 | 19.64 |
| 57.0 | 14.48 | 19.08 |
| 60.0 | 13.67 | 18.52 |
| 63.0 | 12.84 | 17.99 |
| 66.0 | 12.01 | 17.45 |
| 69.0 | 11.18 | 16.92 |
| 72.0 | 10.36 | 16.34 |
| 75.0 | 9.597 | 15.74 |
| 78.0 | 8.878 | 15.19 |
| 81.0 | 8.169 | 14.61 |
| 84.0 | 7.536 | 14.08 |
| 87.0 | 6.979 | 13.53 |
| 90.0 | 6.522 | 12.97 |
| 93.0 | 6.115 | 12.44 |
| 96.0 | 5.758 | 11.93 |
| 99.0 | 5.447 | 10.78 |
| 102.0 | 5.174 | 10.08 |
| 105.0 | 4.568 | 9.751 |
| 108.0 | 4.457 | 9.309 |
| 111.0 | 4.181 | 8.867 |
| 114.0 | 3.990 | 8.449 |
| 117.0 | 3.949 | 8.047 |
| 120.0 | 3.613 | 7.660 |
| 123.0 | 3.462 | 7.298 |
| 126.0 | 3.347 | 6.811 |
| 129.0 | 3.181 | 6.570 |
| 132.0 | 3.020 | 5.997 |
| 135.0 | 2.844 | 5.039 |
| 138.0 | 2.613 | 4.605 |
| 141.0 | 2.457 | 4.249 |
| 144.0 | 2.302 | 3.820 |
| 147.0 | 2.181 | 3.554 |
| 150.0 | 2.035 | 3.227 |
| 153.0 | 2.011 | 2.961 |
| 156.0 | 2.067 | 2.624 |
| 159.0 | 2.071 | 2.358 |
| 162.0 | 2.074 | 2.057 |
| 165.0 | 2.071 | 1.890 |
| 168.0 | 2.045 | 1.895 |
| 171.0 | 1.960 | 1.882 |
| 174.0 | 1.895 | 1.870 |
| 177.0 | 1.849 | 1.779 |
| 180.0 | 1.181 | 0.9850 |

C Range: 0 - 360DEG
 C Interval: 30.0DEG
 Test Speed: HIGH
 Temperature: 25.3DEG
 Operators: LPC
 Test Date: 2021-12-17

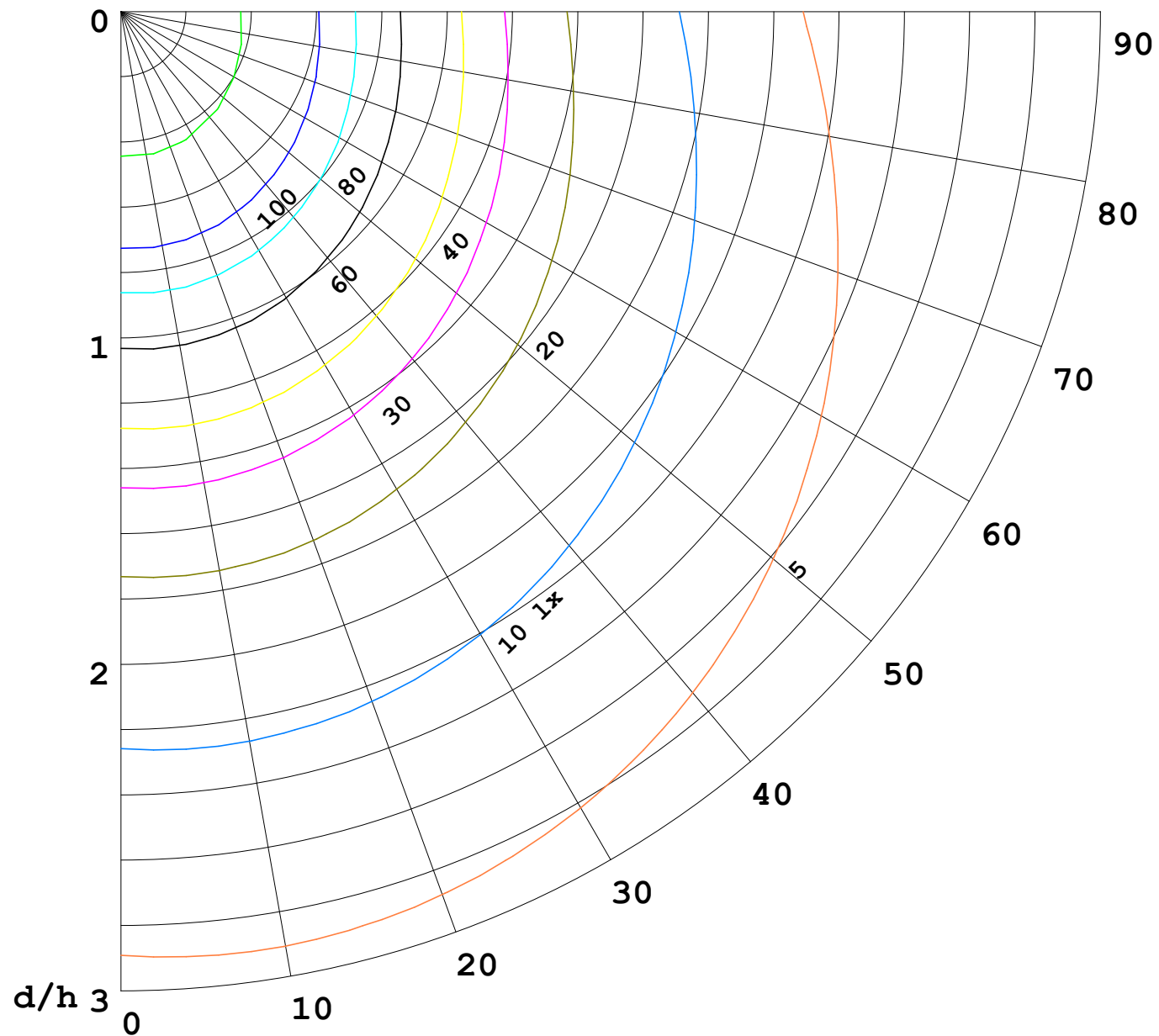
γ Range: 0 - 180DEG
 γ Interval: 1.0DEG
 Test System: EVERFINE GO-2000B_V1 SYSTEM V2.0.362
 Humidity: 65.0%
 Test Distance: 9.200m [K=1.0000]
 Remarks:

I (cd)



1000 lm

$\kappa = 1$



F = 5000 lm
 K = 0.7
 Hcc = 0.0 m
 Hfc = 0.0 m
 Eave = 100 lx

| | Pcc | Pw | Pfc |
|---|-----|----|-----|
| — | 70 | 50 | 30 |
| — | 50 | 30 | 20 |

