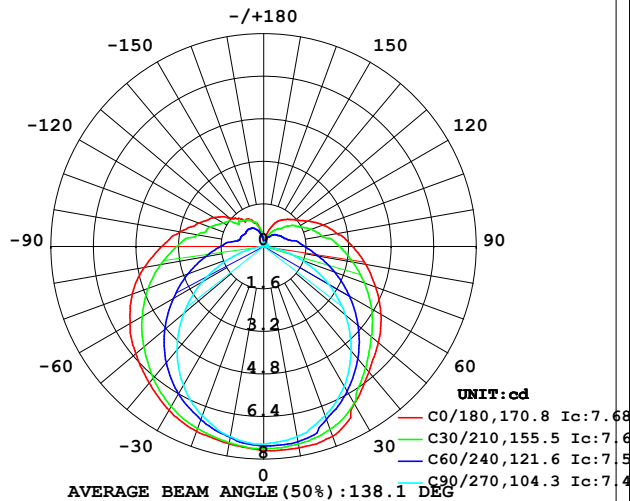


LUMINAIRE PHOTOMETRIC TEST REPORT

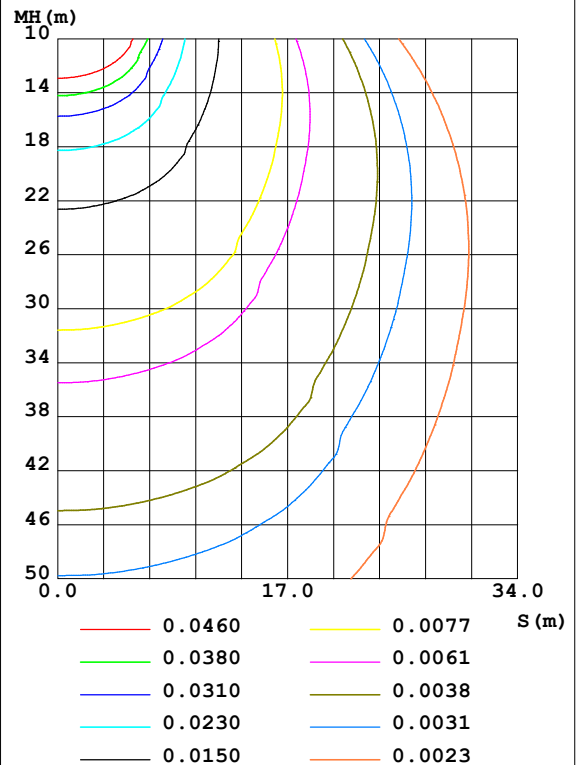
Test:U:24.00V I:0.3197A P:7.674W PF:1.000 Freq:50.00Hz Lamp Flux:35.422x1 lm		
NAME: SF21-24V-5050-70-DMX4-RGBW(5000K)-R	TYPE: 硅胶	WEIGHT:
SPEC.:	DIM.: 28mm*11.5mm	SERIAL No.:20211009
MFR.: OLYMPIA	SUR.:1*0.016	Shielding Angle:

DATA OF LAMP		PHOTOMETRIC DATA				Eff: 4.62 lm/W
MODEL	5050	I _{max} (cd)	7.689	S/MH (C0/180)	1.39	
NOMINAL POWER (W)	4.5	LOR (%)	100.0	S/MH (C90/270)	1.21	
RATED VOLTAGE (V)	24	TOTAL FLUX (lm)	35.422	η UP, DN (C0-180)	10.4, 38.8	
NOMINAL FLUX (lm)	35.422	CIE CLASS	SEMI-D.	η UP, DN (C180-360)	11.0, 39.9	
LAMPS INSIDE	1	η up (%)	21.4	CIBSE SHR NOM	1.50	
TEST VOLTAGE (V)	24	η down (%)	78.6	CIBSE SHR MAX	1.50	

LUMINOUS INTENSITY DISTRIBUTION DIAGRAM



C0 PLANE ISOLUX DIAGRAM (UNIT: lx)



C Range: 0 - 360DEG
C Interval: 30.0DEG
Test Speed: HIGH
Temperature: 25.3DEG
Operators: LPC
Test Date: 2021-10-09

γ Range: 0 - 180DEG
γ Interval: 1.0DEG
Test System: EVERFINE GO-2000B_V1 SYSTEM V2.0.362
Humidity: 65.0%
Test Distance: 9.200m [K=1.0000]
Remarks:

UTILIZATION FACTORS TABLE

Test:U:24.00V I:0.3197A P:7.674W PF:1.000 Freq:50.00Hz Lamp Flux:35.422x1 lm		
NAME: SF21-24V-5050-70-DMX4-RGBW(5000K)-R	TYPE:硅胶	WEIGHT:
SPEC.:	DIM.: 28mm*11.5mm	SERIAL No.:20211009
MFR.: OLYMPIA	SUR.:1*0.016	Shielding Angle:

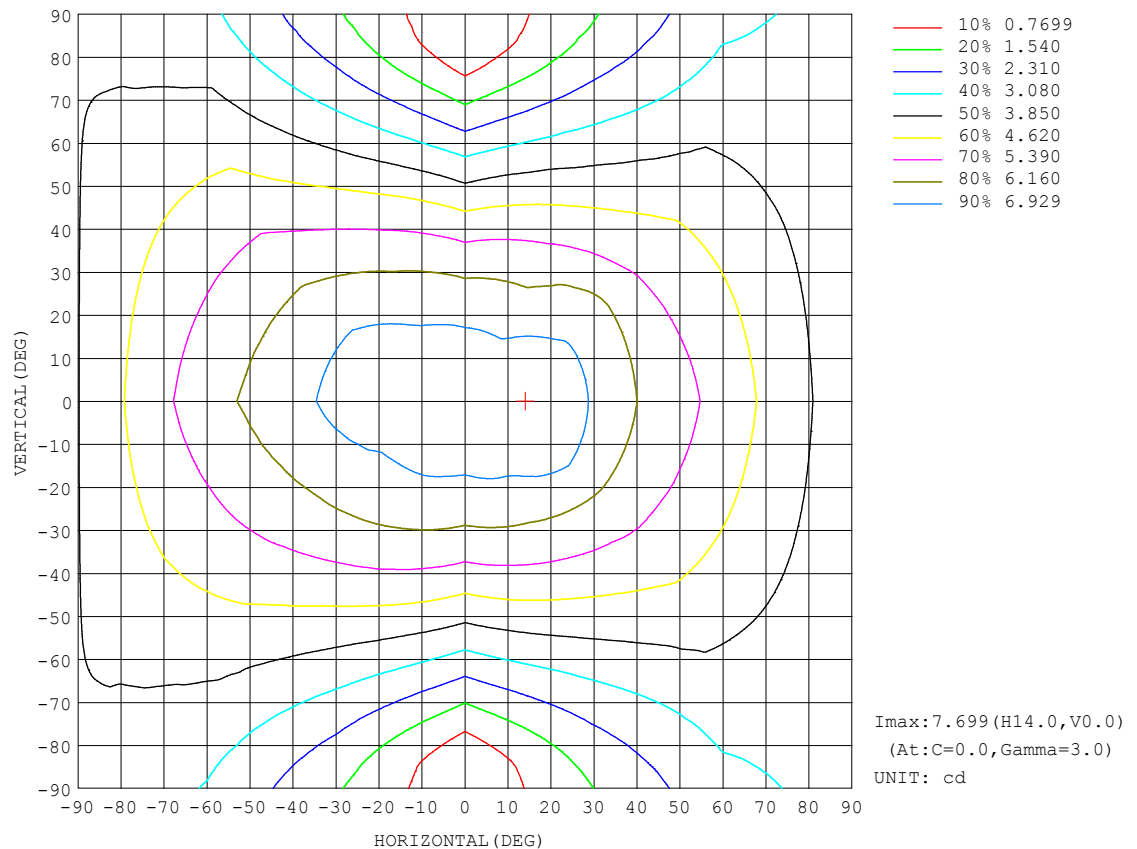
REFLECTANCE										
Ceiling	0.8	0.8	0.8	0.7	0.7	0.7	0.5	0.5	0.5	0
Walls	0.7	0.5	0.3	0.7	0.5	0.3	0.7	0.5	0.3	0
Working plane	0.2	0.2	0.2	0.2	0.2	0.2	0.2	0.2	0.2	0
ROOM INDEX	UTILIZATION FACTORS (PERCENT) $k(RI) \times RCR = 5$									
$k = 0.60$	47	35	28	46	34	27	44	33	27	20
0.80	56	43	35	54	42	35	51	41	34	26
1.00	64	51	43	62	50	42	58	50	41	32
1.25	71	58	50	68	57	49	64	54	47	37
1.50	76	64	55	73	62	54	68	58	51	41
2.00	83	72	64	80	70	62	74	65	59	47
2.50	88	77	69	84	75	67	77	70	64	50
3.00	91	82	75	87	79	72	80	74	68	54
4.00	96	88	81	92	85	79	84	78	74	58
5.00	99	92	86	95	88	83	87	82	77	61
ROOM INDEX	UF (total)									Direct
According to DIN EN 13032-2 2004			Suspended					SHRNOM = 1.25		

C Range: 0 - 360DEG
C Interval: 30.0DEG
Test Speed: HIGH
Temperature:25.3DEG
Operators:LPC
Test Date:2021-10-09

γ Range: 0 - 180DEG
 γ Interval: 1.0DEG
Test System:EVERFINE GO-2000B_V1 SYSTEM V2.0.362
Humidity:65.0%
Test Distance:9.200m [K=1.0000]
Remarks:

ISOCANDELA DIAGRAM

Test:U:24.00V I:0.3197A P:7.674W PF:1.000 Freq:50.00Hz Lamp Flux:35.422x1 lm		
NAME: SF21-24V-5050-70-DMX4-RGBW(5000K)-R	TYPE:硅胶	WEIGHT:
SPEC.:	DIM.: 28mm*11.5mm	SERIAL No.:20211009
MFR.: OLYMPIA	SUR.:1*0.016	Shielding Angle:



C Range: 0 - 360DEG
C Interval: 30.0DEG
Test Speed: HIGH
Temperature:25.3DEG
Operators:LPC
Test Date:2021-10-09

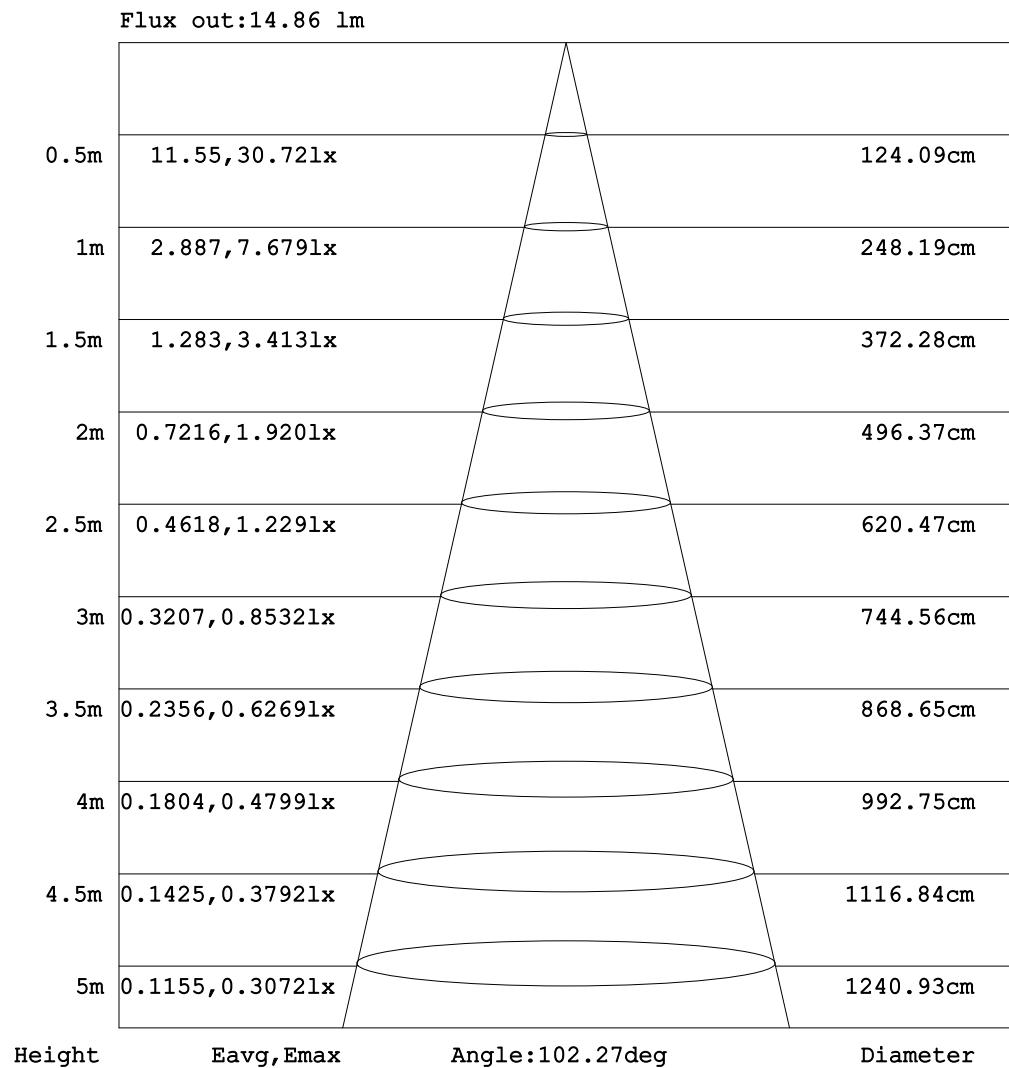
```

Range: 0 - 180DEG
Interval: 1.0DEG
Test System:EVERFINE GO-2000B_V1 SYSTEM V2.0.362
Humidity:65.0%
Test Distance:9.200m [K=1.0000]
Remarks:

```


AAI Figure

Test:U:24.00V I:0.3197A P:7.674W PF:1.000 Freq:50.00Hz Lamp Flux:35.422x1 lm		
NAME: SF21-24V-5050-70-DMX4-RGBW(5000K)-R	TYPE:硅胶	WEIGHT:
SPEC.:	DIM.: 28mm*11.5mm	SERIAL No.:20211009
MFR.: OLYMPIA	SUR.:1*0.016	Shielding Angle:



Note: The Curves indicate the illuminated area and the average illumination when the luminaire is at different distance.

C Range: 0 - 360DEG
C Interval: 30.0DEG
Test Speed: HIGH
Temperature:25.3DEG
Operators:LPC
Test Date:2021-10-09

```

γ Range: 0 - 180DEG
γ Interval: 1.0DEG
Test System:EVERFINE GO-2000B_V1 SYSTEM V2.0.362
Humidity:65.0%
Test Distance:9.200m [K=1.0000]
Remarks:

```

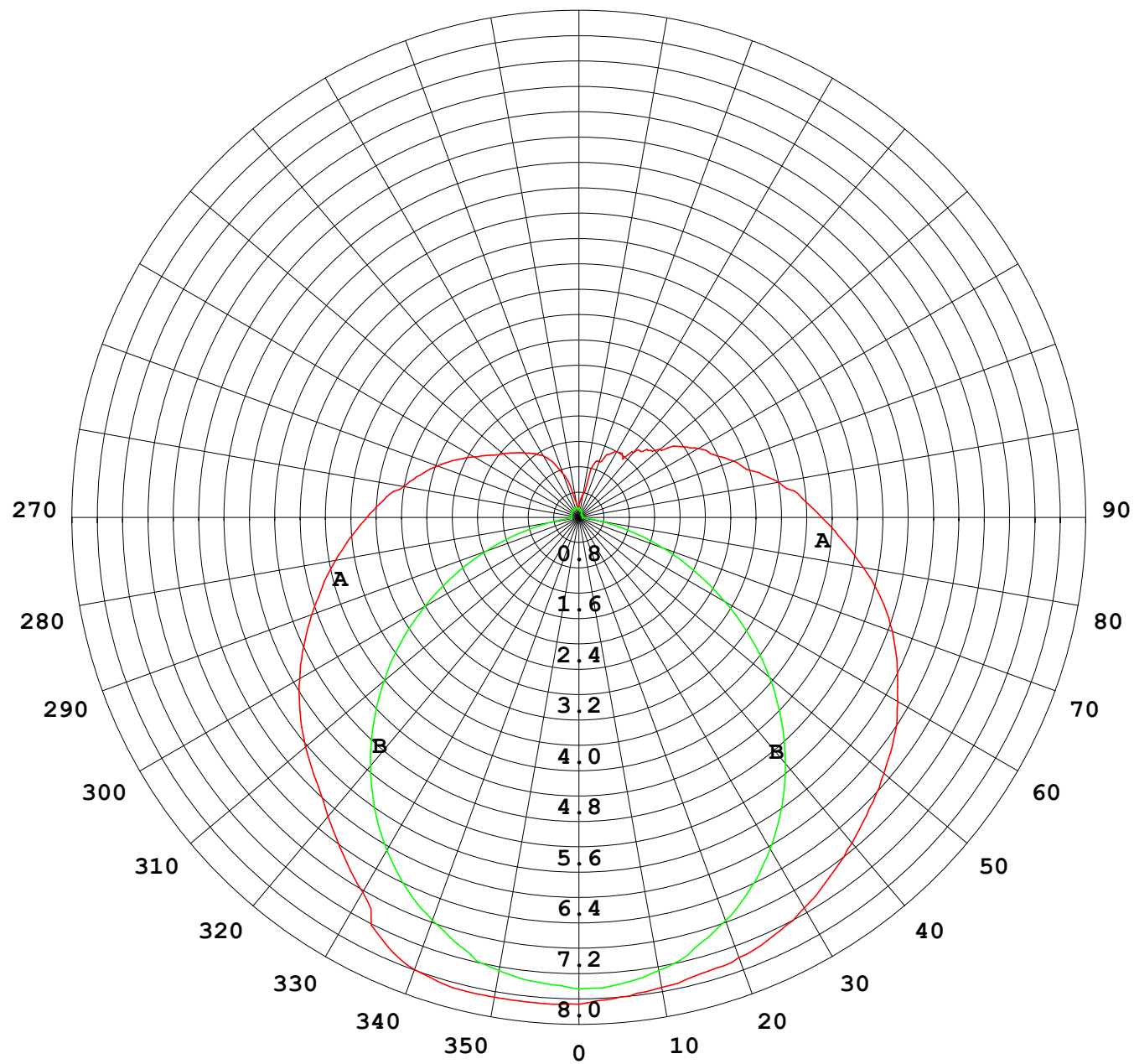

Photometric Data Table [cd]

G/C	0.0	30.0	60.0	90.0	120.0	150.0	180.0	210.0	240.0	270.0
0.0	7.679	7.604	7.503	7.438	7.393	7.342	7.679	7.604	7.503	7.438
3.0	7.689	7.604	7.503	7.388	7.383	7.282	7.624	7.604	7.473	7.433
6.0	7.688	7.589	7.491	7.353	7.338	7.247	7.594	7.559	7.428	7.370
9.0	7.687	7.554	7.473	7.287	7.277	7.197	7.543	7.504	7.327	7.288
12.0	7.686	7.508	7.413	7.207	7.192	7.141	7.513	7.453	7.227	7.197
15.0	7.685	7.453	7.338	7.046	7.107	7.091	7.453	7.388	7.141	7.042
18.0	7.624	7.383	7.052	6.870	6.996	7.041	7.433	7.333	7.020	6.881
21.0	7.564	7.287	6.846	6.704	6.871	6.976	7.383	7.262	6.875	6.720
24.0	7.414	7.176	6.690	6.523	6.725	6.890	7.307	7.182	6.729	6.514
27.0	7.218	7.005	6.494	6.302	6.554	6.779	7.217	7.077	6.583	6.293
30.0	6.826	6.804	6.288	6.065	6.368	6.664	7.116	6.956	6.407	6.037
33.0	6.630	6.462	6.062	5.809	6.162	6.543	7.000	6.825	6.221	5.770
36.0	6.424	6.246	5.831	5.517	5.951	6.377	6.875	6.685	6.005	5.484
39.0	6.223	6.030	5.590	5.221	5.720	6.211	6.739	6.519	5.784	5.173
42.0	6.027	5.819	5.343	4.914	5.469	6.025	6.618	6.348	5.548	4.856
45.0	5.871	5.613	5.087	4.583	5.228	5.844	6.488	6.172	5.296	4.519
48.0	5.725	5.422	4.821	4.246	4.956	5.679	6.377	5.996	5.035	4.172
51.0	5.579	5.246	4.539	3.904	4.680	5.498	6.236	5.830	4.763	3.806
54.0	5.428	5.050	4.268	3.547	4.404	5.322	6.121	5.654	4.487	3.439
57.0	5.263	4.869	3.996	3.180	4.132	5.131	5.985	5.474	4.205	3.057
60.0	5.087	4.688	3.725	2.808	3.861	4.940	5.814	5.272	3.924	2.655
63.0	4.911	4.492	3.449	2.436	3.599	4.754	5.648	5.077	3.653	2.273
66.0	4.730	4.296	3.187	2.065	3.338	4.558	5.492	4.886	3.386	1.896
69.0	4.544	4.101	2.936	1.688	3.087	4.362	5.322	4.695	3.120	1.534
72.0	4.363	3.904	2.690	1.326	2.836	4.161	5.141	4.499	2.864	1.182
75.0	4.187	3.714	2.448	0.9741	2.589	3.970	4.935	4.288	2.613	0.8352
78.0	4.016	3.523	2.222	0.6425	2.363	3.764	4.718	4.081	2.376	0.5185
81.0	3.845	3.342	2.016	0.3662	2.147	3.568	4.477	3.865	2.155	0.2670
84.0	3.674	3.176	1.835	0.1504	1.946	3.397	4.251	3.654	1.954	0.0859
87.0	3.504	3.005	1.669	0.1164	1.775	3.196	4.045	3.458	1.788	0.0603
90.0	3.348	2.854	1.543	0.1177	1.624	3.030	3.834	3.267	1.633	0.0553
93.0	3.202	2.714	1.443	0.1189	1.523	2.879	3.648	3.101	1.507	0.0553
96.0	3.061	2.583	1.357	0.1202	1.408	2.737	3.487	2.956	1.392	0.0603
99.0	2.861	2.241	1.277	0.1168	1.187	2.322	3.251	2.593	1.186	0.0653
102.0	2.729	2.186	1.091	0.1201	0.9307	2.276	3.055	2.443	1.015	0.0653
105.0	2.594	2.080	0.9753	0.1234	0.9146	2.075	2.839	2.242	0.9547	0.0653
108.0	2.473	1.975	0.9148	0.1252	0.9187	1.954	2.683	2.216	0.9347	0.0653
111.0	2.337	1.859	0.8399	0.1270	0.9097	1.814	2.543	2.101	0.9348	0.0653
114.0	2.197	1.734	0.8181	0.1289	0.9096	1.784	2.387	1.991	0.9344	0.0653
117.0	2.051	1.613	0.7964	0.1307	0.9022	1.723	2.291	1.870	0.9077	0.0653
120.0	1.920	1.518	0.7740	0.1350	0.8917	1.638	2.181	1.774	0.8810	0.0653
123.0	1.790	1.432	0.7489	0.1385	0.8751	1.563	2.040	1.699	0.8618	0.0653
126.0	1.674	1.362	0.7138	0.1405	0.8703	1.467	1.914	1.624	0.8574	0.0653
129.0	1.593	1.241	0.6736	0.1425	0.8655	1.397	1.679	1.428	0.8647	0.0653
132.0	1.518	1.136	0.6564	0.1444	0.8607	1.281	1.558	1.247	0.8684	0.0653
135.0	1.443	0.9997	0.6384	0.1482	0.8559	1.251	1.522	1.332	0.8720	0.0653
138.0	1.377	0.9094	0.6082	0.1520	0.8511	1.205	1.427	1.272	0.8694	0.0653
141.0	1.307	0.8443	0.5630	0.1558	0.8293	1.166	1.336	1.241	0.8543	0.0653
144.0	1.247	0.7939	0.5229	0.1558	0.8207	1.106	1.186	1.221	0.8393	0.0653
147.0	1.181	0.7285	0.4776	0.1558	0.8121	1.075	1.215	1.166	0.8301	0.0703
150.0	1.121	0.6581	0.4264	0.1558	0.8091	1.020	1.197	1.161	0.7990	0.0871
153.0	1.026	0.5876	0.4082	0.1558	0.7791	0.9547	1.141	1.111	0.7637	0.1072
156.0	0.9002	0.4973	0.3770	0.1558	0.7188	0.9196	1.085	1.020	0.7035	0.1156
159.0	0.7693	0.4069	0.3369	0.1558	0.6536	0.8694	0.9398	0.9901	0.6681	0.1206
162.0	0.6539	0.3314	0.3017	0.1558	0.5882	0.8189	0.9347	0.9501	0.5979	0.1256
165.0	0.5081	0.2764	0.2266	0.1558	0.5030	0.7534	0.8339	0.7741	0.5226	0.1291
168.0	0.2717	0.2259	0.1710	0.1558	0.4425	0.6129	0.4018	0.7341	0.4523	0.1295
171.0	0.1815	0.2008	0.1669	0.1558	0.3873	0.4872	0.3514	0.6085	0.4216	0.1299
174.0	0.1659	0.1758	0.1632	0.1558	0.2520	0.4016	0.2813	0.5080	0.3562	0.1303
177.0	0.1658	0.1508	0.1608	0.1558	0.1661	0.1658	0.2311	0.4375	0.2056	0.1307
180.0	0.1608	0.1508	0.1608	0.1558	0.1558	0.1558	0.1709	0.1658	0.1608	0.1307
G/C	300.0	330.0								
0.0	7.393	7.342								
3.0	7.393	7.358								
6.0	7.388	7.373								
9.0	7.302	7.433								
12.0	7.171	7.422								
15.0	7.095	7.412								
18.0	6.844	7.248								
21.0	6.704	7.147								
24.0	6.528	7.031								
27.0	6.342	6.921								
30.0	6.146	6.800								

C Range: 0 - 360DEG
 C Interval: 30.0DEG
 Test Speed: HIGH
 Temperature: 25.3DEG
 Operators: LPC
 Test Date: 2021-10-09

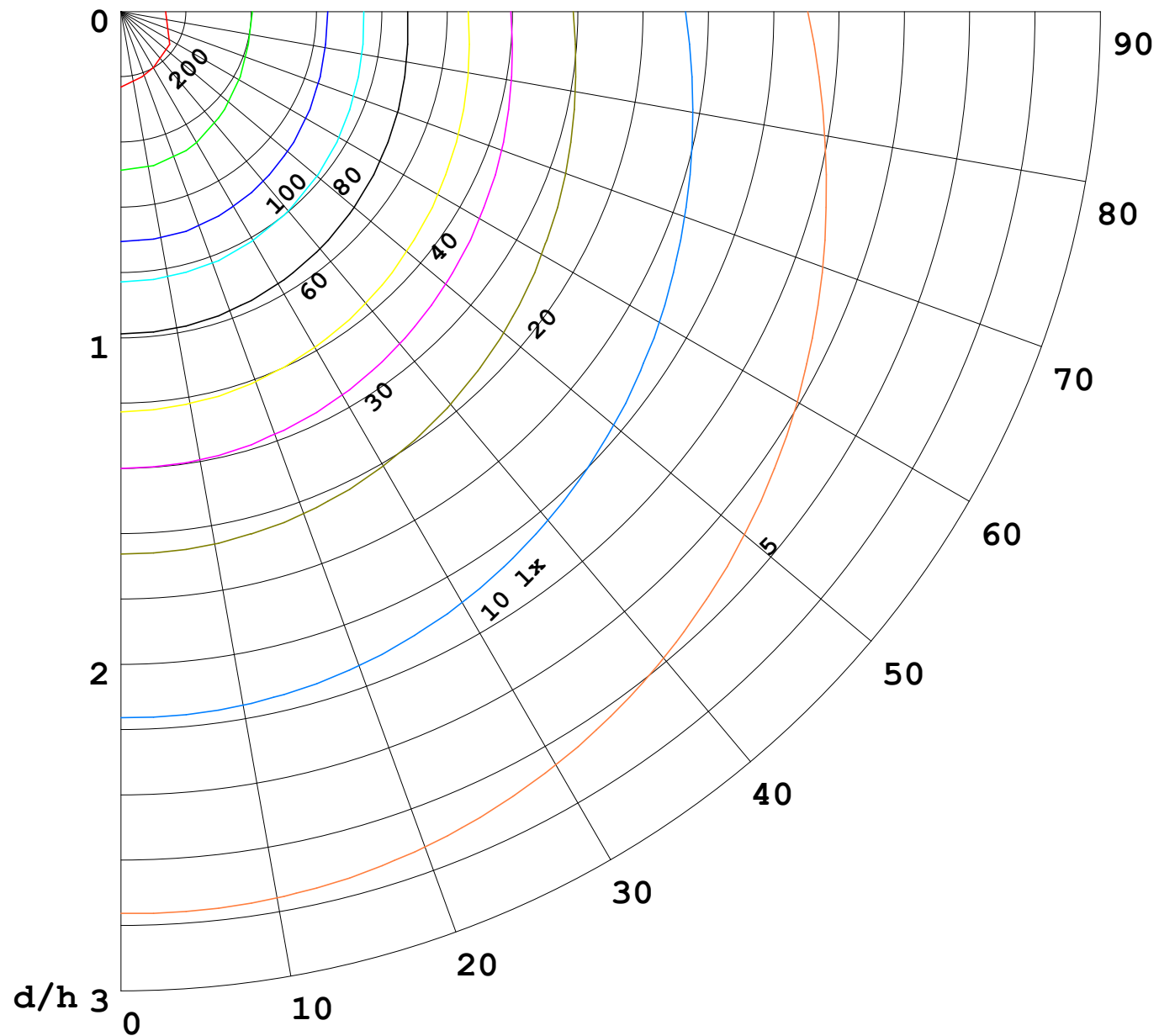
γ Range: 0 - 180DEG
 γ Interval: 1.0DEG
 Test System: EVERFINE GO-2000B_V1 SYSTEM V2.0.362
 Humidity: 65.0%
 Test Distance: 9.200m [K=1.0000]
 Remarks:

I (cd)



1000 lm

$\kappa = 1$



$F = 1000 \text{ lm}$
 $K = 0.7$
 $H_{cc} = 0.8 \text{ m}$
 $H_{fc} = 0.0 \text{ m}$
 $E_{ave} = 100 \text{ lx}$

	P_{cc}	P_w	P_{fc}
—————	70	50	30
—————	50	30	20

