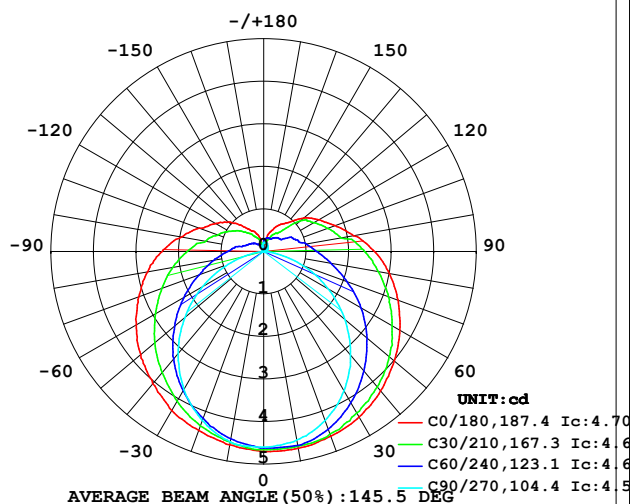


## LUMINAIRE PHOTOMETRIC TEST REPORT

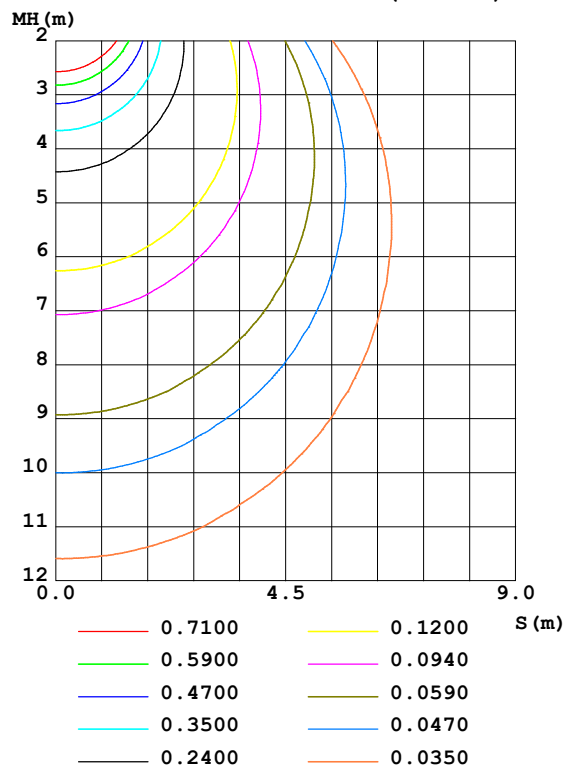
Test:U:24.00V I:0.3210A P:7.704W PF:1.000 Freq:50.00Hz Lamp Flux:22.8775x1 lm		
NAME: SF21-24V-5050-70-DMX4-RGBW(4000)-B	TYPE: 硅胶	WEIGHT:
SPEC.:	DIM.: 28mm*11.5mm	SERIAL No.:2021121703
MFR.: OLYMPIA	SUR.:1*0.016	Shielding Angle:

DATA OF LAMP		PHOTOMETRIC DATA				Eff: 2.97 lm/W
MODEL	5050	I <sub>max</sub> (cd)	4.707	S/MH(C0/180)	1.37	
NOMINAL POWER(W)	4.5	LOR(%)	100.0	S/MH(C90/270)	1.22	
RATED VOLTAGE(V)	24	TOTAL FLUX(lm)	22.877	η UP,DN(C0-180)	11.1,39.3	
NOMINAL FLUX(lm)	22.8775	CIE CLASS	SEMI-D.	η UP,DN(C180-360)	10.8,38.7	
LAMPS INSIDE	1	η up(%)	21.9	CIBSE SHR NOM	1.50	
TEST VOLTAGE(V)	24	η down(%)	78.1	CIBSE SHR MAX	1.55	

LUMINOUS INTENSITY DISTRIBUTION DIAGRAM



C0 PLANE ISOLUX DIAGRAM (UNIT:lx)



C Range: 0 - 360DEG  
C Interval: 30.0DEG  
Test Speed: HIGH  
Temperature: 25.3DEG  
Operators: LPC  
Test Date: 2021-12-17

γ Range: 0 - 180DEG  
γ Interval: 1.0DEG  
Test System: EVERFINE GO-2000B\_V1 SYSTEM V2.0.362  
Humidity: 65.0%  
Test Distance: 9.200m [K=1.0000]  
Remarks:

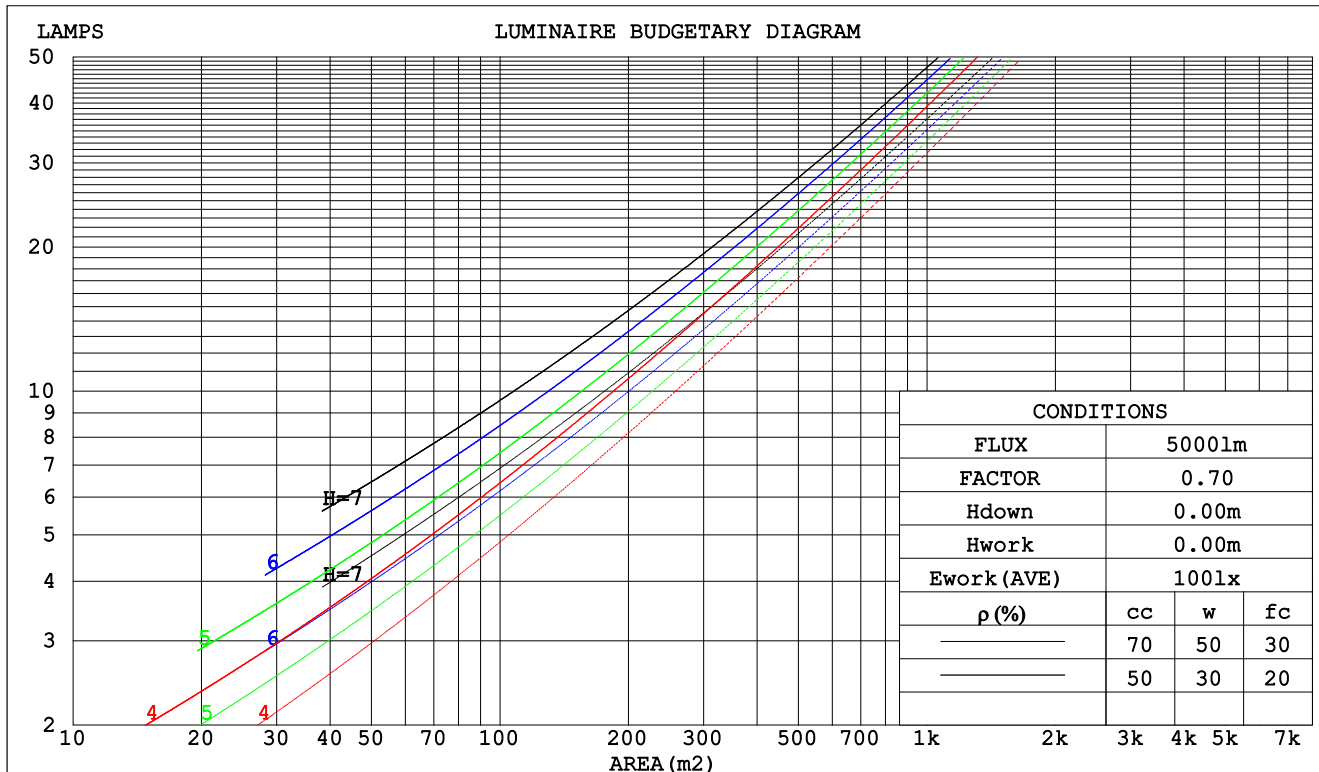




## CU AND LUMINAIRE BUDGETARY ESTIMATE DIAGRAM

Test:U:24.00V I:0.3210A P:7.704W PF:1.000 Freq:50.00Hz Lamp Flux:22.8775x1 lm		
NAME: SF21-24V-5050-70-DMX4-RGBW(4000)-B	TYPE: 硅胶	WEIGHT:
SPEC.:	DIM.: 28mm*11.5mm	SERIAL No.:2021121703
MFR.: OLYMPIA	SUR.:1*0.016	Shielding Angle:

pcc	80%			70%			50%			30%			10%			0
pw	50%	30%	10%	50%	30%	10%	50%	30%	10%	50%	30%	10%	50%	30%	10%	0
pfc	20%			20%			20%			20%			20%			0
RCR	Coefficients of Utilization(CU)															
0.0	1.14	1.14	1.14	1.09	1.09	1.09	.99	.99	.99	.90	.90	.90	.82	.82	.82	.78
1.0	.95	.89	.84	.90	.85	.81	.82	.78	.74	.74	.71	.68	.67	.65	.62	.59
2.0	.81	.73	.66	.77	.70	.64	.70	.64	.59	.63	.58	.54	.57	.53	.50	.46
3.0	.70	.61	.54	.67	.59	.52	.61	.54	.48	.55	.49	.45	.50	.45	.41	.38
4.0	.61	.52	.45	.59	.50	.43	.53	.46	.40	.48	.42	.37	.44	.39	.35	.32
5.0	.55	.45	.38	.52	.43	.37	.47	.40	.34	.43	.37	.32	.39	.34	.30	.27
6.0	.49	.39	.33	.47	.38	.32	.43	.35	.30	.39	.33	.28	.35	.30	.26	.23
7.0	.44	.35	.29	.42	.34	.28	.39	.31	.26	.35	.29	.24	.32	.27	.23	.20
8.0	.40	.31	.25	.38	.30	.25	.35	.28	.23	.32	.26	.22	.29	.24	.20	.18
9.0	.37	.28	.23	.35	.27	.22	.32	.25	.21	.30	.24	.19	.27	.22	.18	.16
10.0	.34	.26	.20	.32	.25	.20	.30	.23	.19	.27	.22	.17	.25	.20	.16	.14



C Range: 0 - 360DEG  
 C Interval: 30.0DEG  
 Test Speed: HIGH  
 Temperature:25.3DEG  
 Operators:LPC  
 Test Date:2021-12-17

γ Range: 0 - 180DEG  
 γ Interval: 1.0DEG  
 Test System:EVERFINE GO-2000B\_V1 SYSTEM V2.0.362  
 Humidity:65.0%  
 Test Distance:9.200m [K=1.0000]  
 Remarks:

## WEC AND CCEC

Test:U:24.00V I:0.3210A P:7.704W PF:1.000 Freq:50.00Hz Lamp Flux:22.8775x1 lm		
NAME: SF21-24V-5050-70-DMX4-RGBW(4000)-B	TYPE: 硅胶	WEIGHT:
SPEC.:	DIM.: 28mm*11.5mm	SERIAL No.:2021121703
MFR.: OLYMPIA	SUR.:1*0.016	Shielding Angle:

pcc	80%			70%			50%			30%			10%			0	
pw	50%	30%	10%	50%	30%	10%	50%	30%	10%	50%	30%	10%	50%	30%	10%	0	
pfc	20%			20%			20%			20%			20%			0	
RCR	RCR:Room Cavity Ratio						Wall Exitance Coefficients(WEC)										
0.0																	
1.0	.387	.220	.070	.373	.213	.068	.347	.199	.064	.323	.186	.060	.301	.175	.056		
2.0	.333	.183	.056	.321	.177	.054	.297	.165	.051	.275	.155	.048	.255	.144	.046		
3.0	.296	.157	.047	.284	.152	.046	.263	.142	.043	.243	.133	.041	.225	.124	.038		
4.0	.266	.138	.041	.255	.134	.039	.236	.125	.037	.218	.117	.035	.201	.109	.033		
5.0	.241	.123	.036	.232	.119	.035	.214	.112	.033	.198	.104	.031	.182	.097	.029		
6.0	.221	.111	.032	.212	.107	.031	.196	.101	.029	.181	.094	.028	.167	.088	.026		
7.0	.204	.101	.029	.196	.098	.028	.181	.092	.026	.167	.086	.025	.154	.080	.024		
8.0	.189	.092	.026	.182	.089	.025	.168	.084	.024	.155	.079	.023	.143	.074	.021		
9.0	.176	.085	.024	.169	.083	.023	.157	.078	.022	.145	.073	.021	.134	.068	.020		
10.0	.165	.079	.022	.159	.077	.021	.147	.072	.020	.136	.067	.019	.125	.063	.018		

pcc	80%			70%			50%			30%			10%			0
pw	50%	30%	10%	50%	30%	10%	50%	30%	10%	50%	30%	10%	50%	30%	10%	0
pfc	20%			20%			20%			20%			20%			0
RCR	RCR:Room Cavity Ratio						Ceiling Cavity Exitance Coefficients(CCEC)									
0.0	.358	.358	.358	.306	.306	.306	.209	.209	.209	.120	.120	.120	.038	.038	.038	
1.0	.354	.324	.297	.303	.278	.255	.207	.191	.177	.119	.111	.103	.038	.036	.033	
2.0	.347	.301	.263	.298	.259	.227	.204	.179	.158	.118	.104	.093	.038	.034	.030	
3.0	.340	.285	.241	.291	.246	.209	.200	.171	.147	.116	.100	.086	.037	.032	.028	
4.0	.332	.273	.227	.285	.236	.197	.196	.164	.139	.113	.096	.082	.036	.031	.027	
5.0	.325	.263	.217	.279	.227	.189	.192	.159	.134	.111	.093	.079	.036	.030	.026	
6.0	.317	.255	.211	.273	.221	.183	.188	.155	.130	.109	.091	.077	.035	.030	.025	
7.0	.310	.249	.205	.267	.215	.179	.184	.151	.127	.107	.089	.075	.035	.029	.025	
8.0	.303	.243	.201	.261	.211	.176	.181	.148	.125	.105	.087	.074	.034	.029	.025	
9.0	.297	.238	.198	.256	.207	.173	.177	.145	.123	.103	.086	.073	.033	.028	.024	
10.0	.291	.234	.196	.251	.203	.171	.174	.143	.122	.102	.085	.073	.033	.028	.024	

C Range: 0 - 360DEG  
 C Interval: 30.0DEG  
 Test Speed: HIGH  
 Temperature:25.3DEG  
 Operators:LPC  
 Test Date:2021-12-17

γ Range: 0 - 180DEG  
 γ Interval: 1.0DEG  
 Test System:EVERFINE GO-2000B\_V1 SYSTEM V2.0.362  
 Humidity:65.0%  
 Test Distance:9.200m [K=1.0000]  
 Remarks:



### UTILIZATION FACTORS TABLE

Test:U:24.00V I:0.3210A P:7.704W PF:1.000 Freq:50.00Hz Lamp Flux:22.8775x1 lm		
NAME: SF21-24V-5050-70-DMX4-RGBW(4000)-B	TYPE:硅胶	WEIGHT:
SPEC.:	DIM.: 28mm*11.5mm	SERIAL No.:2021121703
MFR.: OLYMPIA	SUR.:1*0.016	Shielding Angle:

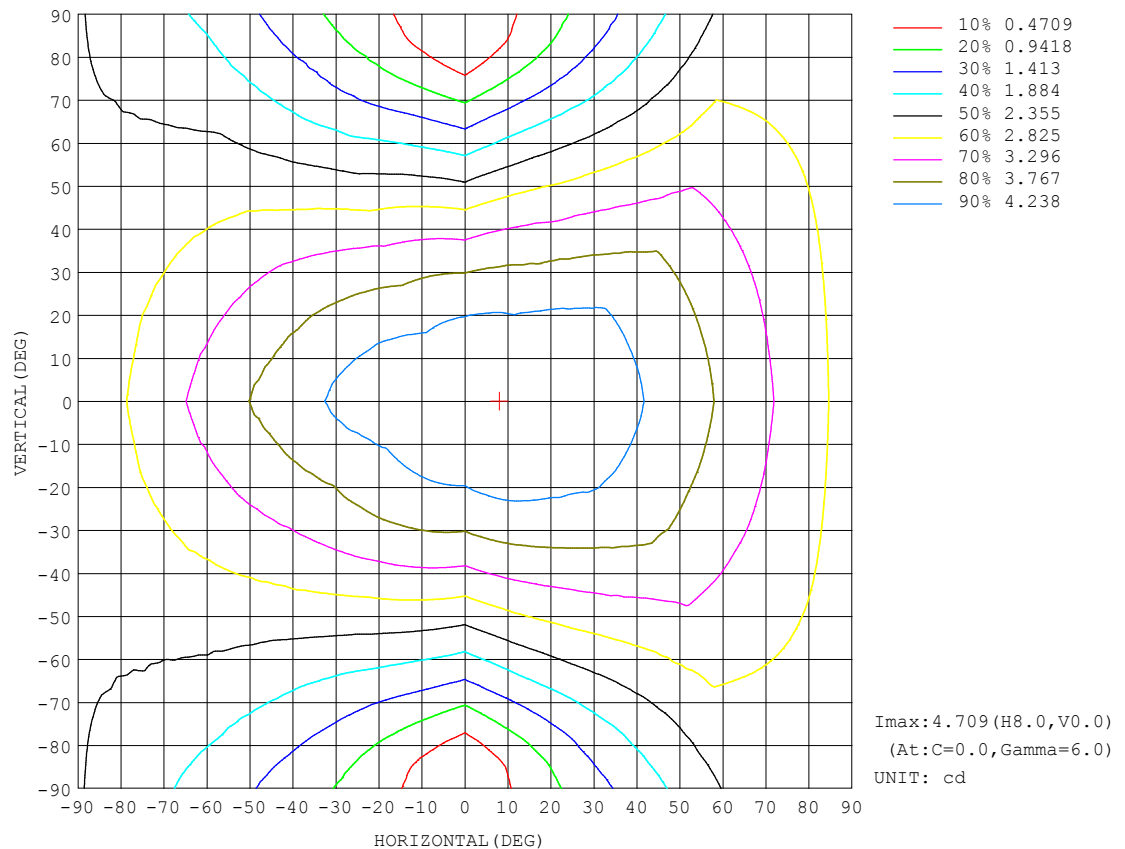
REFLECTANCE										
Ceiling	0.8	0.8	0.8	0.7	0.7	0.7	0.5	0.5	0.5	0
Walls	0.7	0.5	0.3	0.7	0.5	0.3	0.7	0.5	0.3	0
Working plane	0.2	0.2	0.2	0.2	0.2	0.2	0.2	0.2	0.2	0
ROOM INDEX	UTILIZATION FACTORS (PERCENT) $k(RI) \times RCR = 5$									
$k = 0.60$	46	34	27	45	34	27	43	33	26	19
0.80	56	42	34	54	42	34	51	40	33	25
1.00	63	50	42	61	49	41	57	49	40	31
1.25	70	57	49	68	56	48	63	53	46	36
1.50	75	63	54	72	61	53	67	58	51	40
2.00	82	71	63	79	69	61	73	65	58	46
2.50	87	77	68	83	74	67	77	69	63	49
3.00	91	81	74	87	78	71	80	73	67	53
4.00	96	87	81	91	84	78	84	78	73	57
5.00	99	91	85	94	88	82	86	81	76	60
ROOM INDEX	UF (total)									Direct
According to DIN EN 13032-2 2004			Suspended					SHRNOM = 1.25		

C Range: 0 - 360DEG  
C Interval: 30.0DEG  
Test Speed: HIGH  
Temperature:25.3DEG  
Operators:LPC  
Test Date:2021-12-17

$\gamma$  Range: 0 - 180DEG  
 $\gamma$  Interval: 1.0DEG  
Test System:EVERFINE GO-2000B\_V1 SYSTEM V2.0.362  
Humidity:65.0%  
Test Distance:9.200m [K=1.0000]  
Remarks:

### ISOCANDELA DIAGRAM

Test:U:24.00V I:0.3210A P:7.704W PF:1.000 Freq:50.00Hz Lamp Flux:22.8775x1 lm		
NAME: SF21-24V-5050-70-DMX4-RGBW(4000)-B	TYPE:硅胶	WEIGHT:
SPEC.:	DIM.: 28mm*11.5mm	SERIAL No.:2021121703
MFR.: OLYMPIA	SUR.:1*0.016	Shielding Angle:



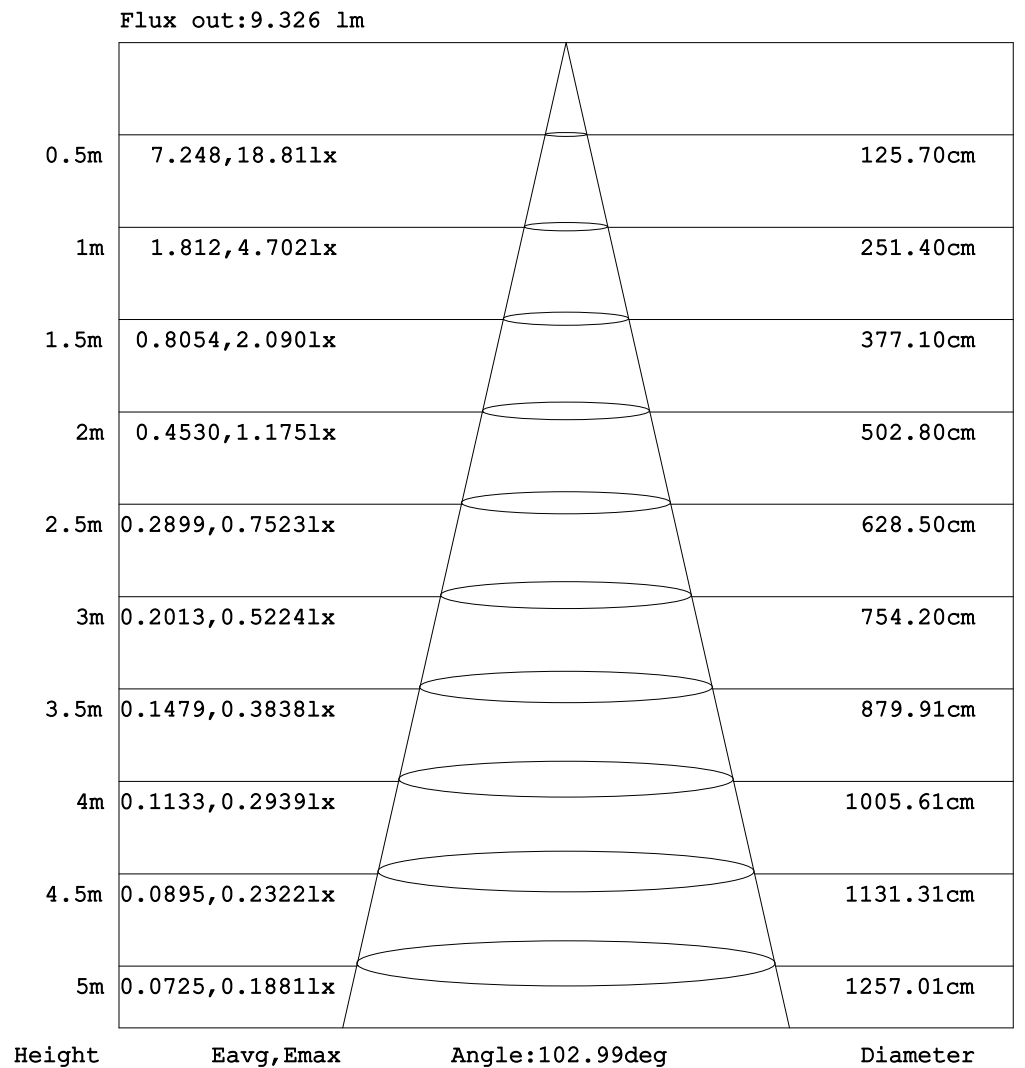
C Range: 0 - 360DEG  
C Interval: 30.0DEG  
Test Speed: HIGH  
Temperature:25.3DEG  
Operators:LPC  
Test Date:2021-12-17

γ Range: 0 - 180DEG  
 γ Interval: 1.0DEG  
 Test System:EVERFINE GO-2000B\_V1 SYSTEM V2.0.362  
 Humidity:65.0%  
 Test Distance:9.200m [K=1.0000]  
 Remarks:



## AAI Figure

Test:U:24.00V I:0.3210A P:7.704W PF:1.000 Freq:50.00Hz Lamp Flux:22.8775x1 lm		
NAME: SF21-24V-5050-70-DMX4-RGBW(4000)-B	TYPE:硅胶	WEIGHT:
SPEC.:	DIM.: 28mm*11.5mm	SERIAL No.:2021121703
MFR.: OLYMPIA	SUR.:1*0.016	Shielding Angle:



Note: The Curves indicate the illuminated area and the average illumination when the luminaire is at different distance.

C Range: 0 - 360DEG  
C Interval: 30.0DEG  
Test Speed: HIGH  
Temperature:25.3DEG  
Operators:LPC  
Test Date:2021-12-17

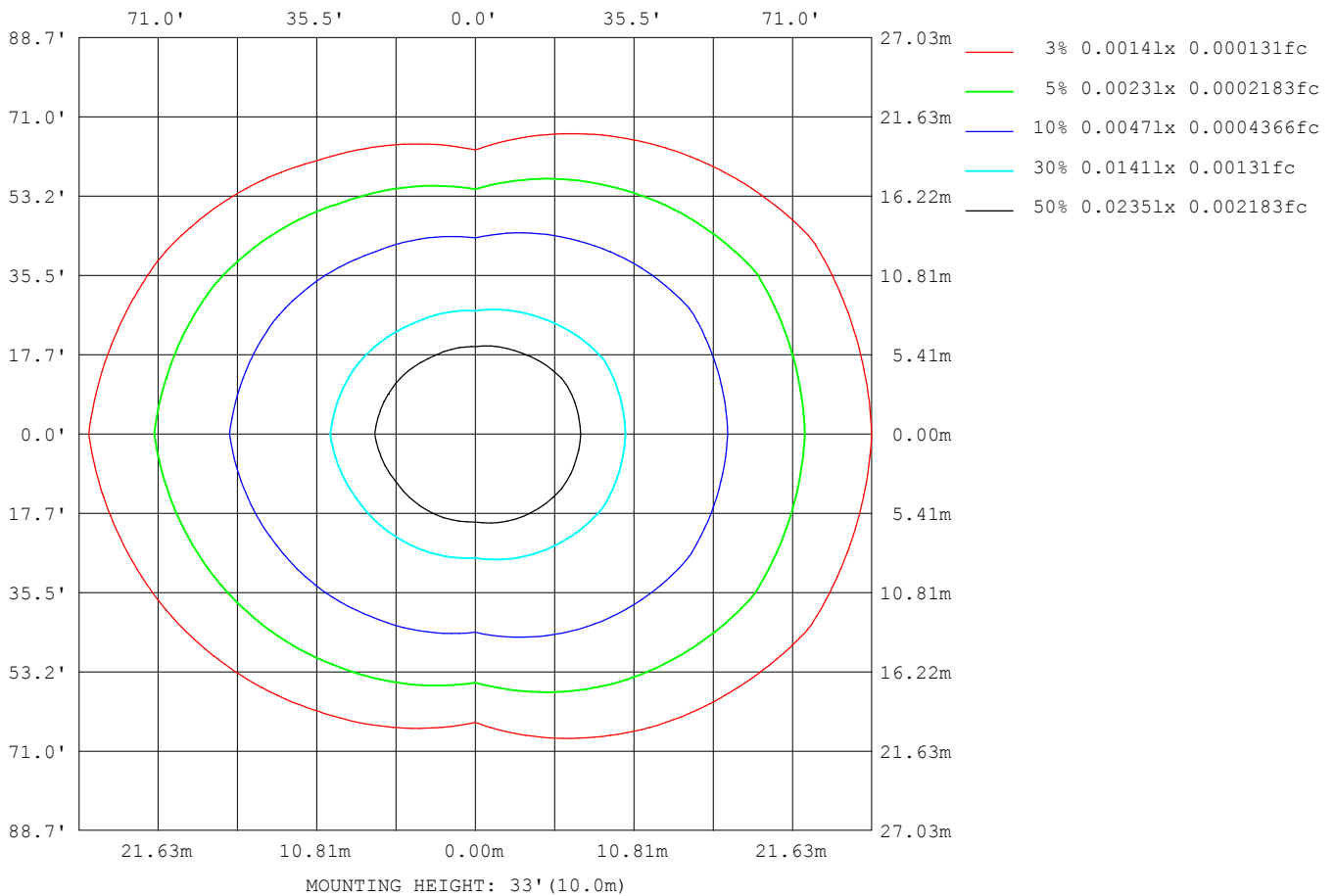
```

γ Range: 0 - 180DEG
γ Interval: 1.0DEG
Test System:EVERFINE GO-2000B_V1 SYSTEM V2.0.362
Humidity:65.0%
Test Distance:9.200m [K=1.0000]
Remarks:

```

# ISOLUX DIAGRAM

Test:U:24.00V I:0.3210A P:7.704W PF:1.000 Freq:50.00Hz Lamp Flux:22.8775x1 lm		
NAME: SF21-24V-5050-70-DMX4-RGBW(4000)-B	TYPE:硅胶	WEIGHT:
SPEC.:	DIM.: 28mm*11.5mm	SERIAL No.:2021121703
MFR.: OLYMPIA	SUR.:1*0.016	Shielding Angle:



C Range: 0 - 360DEG  
C Interval: 30.0DEG  
Test Speed: HIGH  
Temperature: 25.3DEG  
Operators: LPC  
Test Date: 2021-12-17

```

γ Range: 0 - 180DEG
γ Interval: 1.0DEG
Test System:EVERFINE GO-2000B_V1 SYSTEM V2.0.362
Humidity:65.0%
Test Distance:9.200m [K=1.0000]
Remarks:

```





## LUMINOUS DISTRIBUTION INTENSITY DATA

Test:U:24.00V I:0.3210A P:7.704W PF:1.000 Freq:50.00Hz Lamp Flux:22.8775x1 lm		
NAME: SF21-24V-5050-70-DMX4-RGBW(4000)-B	TYPE: 硅胶	WEIGHT:
SPEC.:	DIM.: 28mm*11.5mm	SERIAL No.:2021121703
MFR.: OLYMPIA	SUR.:1*0.016	Shielding Angle:

Table--1

UNIT: cd

C (DEG) γ (DEG)	0	30	60	90	120	150	180	210	240	270	300	330						
0	4.70	4.66	4.62	4.60	4.62	4.59	4.70	4.66	4.62	4.60	4.62	4.59						
5	4.71	4.66	4.63	4.57	4.60	4.54	4.66	4.63	4.55	4.59	4.62	4.62						
10	4.70	4.65	4.63	4.50	4.51	4.47	4.62	4.55	4.47	4.54	4.55	4.62						
15	4.67	4.64	4.56	4.39	4.39	4.37	4.54	4.46	4.34	4.41	4.46	4.61						
20	4.62	4.57	4.45	4.23	4.24	4.26	4.47	4.36	4.17	4.23	4.33	4.59						
25	4.57	4.48	4.29	4.03	4.08	4.13	4.40	4.22	4.00	4.01	4.17	4.51						
30	4.49	4.38	4.10	3.78	3.87	3.98	4.32	4.07	3.78	3.75	4.00	4.42						
35	4.40	4.29	3.90	3.49	3.63	3.81	4.18	3.89	3.56	3.45	3.80	4.32						
40	4.28	4.16	3.66	3.18	3.37	3.62	4.06	3.72	3.30	3.13	3.58	4.20						
45	4.15	4.02	3.42	2.84	3.10	3.44	3.91	3.54	3.02	2.79	3.34	4.07						
50	4.01	3.85	3.17	2.50	2.81	3.25	3.77	3.34	2.73	2.42	3.10	3.92						
55	3.86	3.67	2.91	2.12	2.52	3.04	3.64	3.14	2.45	2.04	2.84	3.74						
60	3.69	3.49	2.64	1.75	2.24	2.85	3.46	2.94	2.17	1.65	2.57	3.56						
65	3.52	3.32	2.36	1.39	1.96	2.64	3.29	2.74	1.88	1.28	2.29	3.37						
70	3.36	3.12	2.09	0.99	1.69	2.45	3.12	2.55	1.61	0.89	2.03	3.19						
75	3.18	2.92	1.83	0.62	1.46	2.28	2.95	2.36	1.39	0.52	1.76	3.00						
80	3.00	2.74	1.60	0.28	1.25	2.07	2.77	2.17	1.18	0.21	1.52	2.81						
85	2.81	2.57	1.41	0.04	1.08	1.88	2.60	1.98	0.99	0.02	1.33	2.63						
90	2.61	2.37	1.25	0.04	0.93	1.71	2.39	1.80	0.85	0.00	1.18	2.45						
95	2.40	2.20	1.13	0.04	0.81	1.57	2.20	1.63	0.76	0.00	1.05	2.29						
100	2.15	1.84	1.02	0.04	0.74	1.31	1.96	1.39	0.67	0.00	0.94	1.94						
105	1.97	1.72	0.87	0.06	0.53	1.22	1.79	1.29	0.51	0.00	0.79	1.82						
110	1.78	1.60	0.80	0.07	0.50	1.06	1.61	1.15	0.43	0.00	0.76	1.68						
115	1.62	1.49	0.75	0.08	0.46	0.94	1.43	1.07	0.40	0.00	0.68	1.56						
120	1.50	1.36	0.64	0.08	0.43	0.86	1.32	0.96	0.37	0.00	0.60	1.44						
125	1.37	1.26	0.50	0.10	0.40	0.77	1.19	0.84	0.33	0.04	0.57	1.33						
130	1.22	1.12	0.48	0.11	0.36	0.69	1.09	0.75	0.31	0.04	0.51	1.20						
135	1.05	0.83	0.46	0.12	0.33	0.60	0.94	0.64	0.28	0.04	0.45	0.97						
140	0.89	0.59	0.43	0.14	0.30	0.53	0.79	0.57	0.22	0.06	0.39	0.80						
145	0.79	0.53	0.39	0.15	0.25	0.43	0.65	0.50	0.21	0.07	0.34	0.67						
150	0.72	0.46	0.35	0.17	0.22	0.35	0.56	0.41	0.16	0.11	0.30	0.58						
155	0.62	0.38	0.34	0.19	0.16	0.27	0.52	0.34	0.11	0.12	0.30	0.47						
160	0.51	0.30	0.34	0.20	0.10	0.20	0.43	0.28	0.05	0.13	0.29	0.39						
165	0.42	0.26	0.33	0.20	0.08	0.12	0.31	0.18	0.05	0.14	0.28	0.32						
170	0.19	0.23	0.31	0.21	0.07	0.06	0.17	0.08	0.05	0.17	0.27	0.30						
175	0.15	0.20	0.29	0.21	0.06	0.06	0.07	0.07	0.05	0.20	0.24	0.29						
180	0.06	0.06	0.22	0.21	0.20	0.19	0.07	0.06	0.14	0.20	0.21	0.20						

C Range: 0 - 360DEG  
C Interval: 30.0DEG  
Test Speed: HIGH  
Temperature:25.3DEG  
Operators:LPC  
Test Date:2021-12-17

γ Range: 0 - 180DEG  
γ Interval: 1.0DEG  
Test System:EVERFINE GO-2000B\_V1 SYSTEM V2.0.362  
Humidity:65.0%  
Test Distance:9.200m [K=1.0000]  
Remarks:

### Photometric Data Table [cd]

G/C	0.0	30.0	60.0	90.0	120.0	150.0	180.0	210.0	240.0	270.0
0.0	4.699	4.659	4.624	4.599	4.624	4.588	4.699	4.659	4.624	4.599
3.0	4.704	4.659	4.624	4.588	4.619	4.553	4.679	4.654	4.578	4.599
6.0	4.707	4.657	4.626	4.553	4.584	4.538	4.654	4.609	4.538	4.590
9.0	4.698	4.655	4.628	4.528	4.528	4.473	4.619	4.574	4.488	4.569
12.0	4.690	4.649	4.609	4.453	4.468	4.427	4.583	4.523	4.422	4.498
15.0	4.674	4.636	4.564	4.387	4.393	4.372	4.538	4.463	4.337	4.408
18.0	4.644	4.611	4.493	4.297	4.312	4.307	4.503	4.403	4.246	4.307
21.0	4.609	4.558	4.418	4.191	4.212	4.242	4.458	4.332	4.141	4.182
24.0	4.579	4.513	4.323	4.070	4.116	4.151	4.422	4.257	4.045	4.051
27.0	4.543	4.467	4.212	3.930	3.996	4.066	4.387	4.167	3.910	3.906
30.0	4.493	4.382	4.101	3.779	3.870	3.975	4.322	4.071	3.784	3.755
33.0	4.428	4.317	3.986	3.613	3.735	3.884	4.226	3.961	3.653	3.574
36.0	4.373	4.252	3.850	3.432	3.584	3.754	4.151	3.855	3.497	3.388
39.0	4.307	4.176	3.715	3.246	3.428	3.653	4.071	3.750	3.347	3.197
42.0	4.227	4.101	3.569	3.050	3.262	3.563	3.990	3.639	3.186	2.996
45.0	4.151	4.015	3.418	2.844	3.096	3.437	3.915	3.538	3.025	2.790
48.0	4.061	3.920	3.267	2.633	2.921	3.327	3.829	3.423	2.849	2.569
51.0	3.981	3.824	3.117	2.422	2.750	3.201	3.749	3.302	2.683	2.348
54.0	3.890	3.739	2.961	2.196	2.579	3.085	3.664	3.177	2.527	2.122
57.0	3.800	3.598	2.805	1.979	2.413	2.955	3.568	3.056	2.336	1.890
60.0	3.694	3.488	2.639	1.748	2.237	2.849	3.462	2.940	2.170	1.654
63.0	3.599	3.377	2.478	1.517	2.066	2.724	3.362	2.820	1.999	1.433
66.0	3.493	3.266	2.307	1.306	1.900	2.598	3.256	2.704	1.839	1.207
69.0	3.393	3.166	2.142	1.070	1.739	2.497	3.171	2.584	1.668	0.9656
72.0	3.292	3.045	1.981	0.8386	1.589	2.377	3.050	2.473	1.517	0.7395
75.0	3.182	2.920	1.835	0.6177	1.463	2.276	2.950	2.362	1.392	0.5233
78.0	3.071	2.814	1.684	0.4115	1.337	2.151	2.849	2.247	1.261	0.3272
81.0	2.966	2.699	1.568	0.2257	1.217	2.040	2.739	2.136	1.165	0.1612
84.0	2.850	2.593	1.448	0.0751	1.111	1.929	2.623	2.021	1.035	0.0305
87.0	2.729	2.482	1.347	0.0352	1.006	1.809	2.522	1.905	0.9345	0.0100
90.0	2.609	2.372	1.247	0.0352	0.9250	1.713	2.387	1.800	0.8491	0
93.0	2.478	2.281	1.171	0.0352	0.8546	1.603	2.281	1.699	0.7788	0
96.0	2.358	2.166	1.101	0.0352	0.8042	1.523	2.161	1.608	0.7284	0
99.0	2.237	1.934	1.041	0.0352	0.7491	1.322	2.010	1.413	0.6784	0
102.0	2.071	1.804	0.9003	0.0553	0.6487	1.271	1.899	1.357	0.5923	0
105.0	1.965	1.724	0.8697	0.0553	0.5279	1.221	1.794	1.292	0.5126	0
108.0	1.855	1.658	0.8495	0.0603	0.5047	1.125	1.688	1.197	0.4622	0
111.0	1.749	1.573	0.8041	0.0704	0.4926	1.040	1.538	1.131	0.4321	0
114.0	1.654	1.513	0.7608	0.0754	0.4675	0.9648	1.457	1.086	0.4059	0
117.0	1.573	1.432	0.7407	0.0804	0.4523	0.9296	1.397	1.010	0.3878	0
120.0	1.498	1.362	0.6438	0.0804	0.4272	0.8643	1.316	0.9550	0.3658	0
123.0	1.418	1.311	0.5530	0.0956	0.4121	0.8240	1.246	0.8847	0.3477	0.0050
126.0	1.342	1.261	0.4926	0.1006	0.3871	0.7689	1.171	0.8244	0.3266	0.0302
129.0	1.257	1.170	0.4825	0.1106	0.3720	0.6985	1.095	0.7792	0.3016	0.0402
132.0	1.151	1.015	0.4735	0.1156	0.3468	0.6782	1.020	0.7238	0.2914	0.0402
135.0	1.046	0.8287	0.4575	0.1246	0.3317	0.6030	0.9396	0.6435	0.2762	0.0402
138.0	0.9501	0.6831	0.4423	0.1307	0.3067	0.5327	0.8392	0.5932	0.2311	0.0502
141.0	0.8647	0.5826	0.4222	0.1357	0.2866	0.5122	0.7535	0.5580	0.2181	0.0603
144.0	0.8093	0.5377	0.3922	0.1458	0.2614	0.4372	0.6732	0.5177	0.2061	0.0753
147.0	0.7691	0.5125	0.3720	0.1509	0.2463	0.3818	0.6229	0.4425	0.1910	0.0754
150.0	0.7188	0.4623	0.3469	0.1709	0.2162	0.3515	0.5579	0.4072	0.1606	0.1105
153.0	0.6586	0.4120	0.3405	0.1810	0.1711	0.2964	0.5327	0.3720	0.1206	0.1170
156.0	0.5983	0.3568	0.3384	0.1961	0.1459	0.2713	0.4973	0.3418	0.0903	0.1211
159.0	0.5228	0.3214	0.3364	0.2016	0.1107	0.2159	0.4421	0.3017	0.0552	0.1252
162.0	0.4776	0.2764	0.3344	0.2032	0.0805	0.1556	0.3816	0.2464	0.0503	0.1293
165.0	0.4173	0.2591	0.3324	0.2048	0.0754	0.1155	0.3114	0.1811	0.0503	0.1407
168.0	0.2068	0.2382	0.3217	0.2063	0.0654	0.0503	0.1987	0.1359	0.0503	0.1557
171.0	0.1860	0.2262	0.3116	0.2079	0.0653	0.0603	0.1486	0.0655	0.0503	0.1659
174.0	0.1559	0.2060	0.2916	0.2095	0.0603	0.0603	0.0803	0.0653	0.0503	0.1960
177.0	0.1209	0.2010	0.2815	0.2111	0.0603	0.0603	0.0653	0.0653	0.0504	0.2011
180.0	0.0603	0.0603	0.2161	0.2111	0.1960	0.1860	0.0653	0.0603	0.1357	0.2010
G/C	300.0	330.0								
0.0	4.624	4.588								
3.0	4.624	4.614								
6.0	4.608	4.618								
9.0	4.563	4.616								
12.0	4.533	4.614								
15.0	4.463	4.611								
18.0	4.392	4.609								
21.0	4.302	4.579								
24.0	4.206	4.533								
27.0	4.096	4.478								
30.0	3.995	4.423								

C Range: 0 - 360DEG  
C Interval: 30.0DEG  
Test Speed: HIGH  
Temperature: 25.3DEG  
Operators: LPC  
Test Date: 2021-12-17

```

✓ Range: 0 - 180DEG
✓ Interval: 1.0DEG
Test System:EVERFINE GO-2000B_V1 SYSTEM V2.0.362
Humidity:65.0%
Test Distance:9.200m [K=1.0000]
Remarks:

```

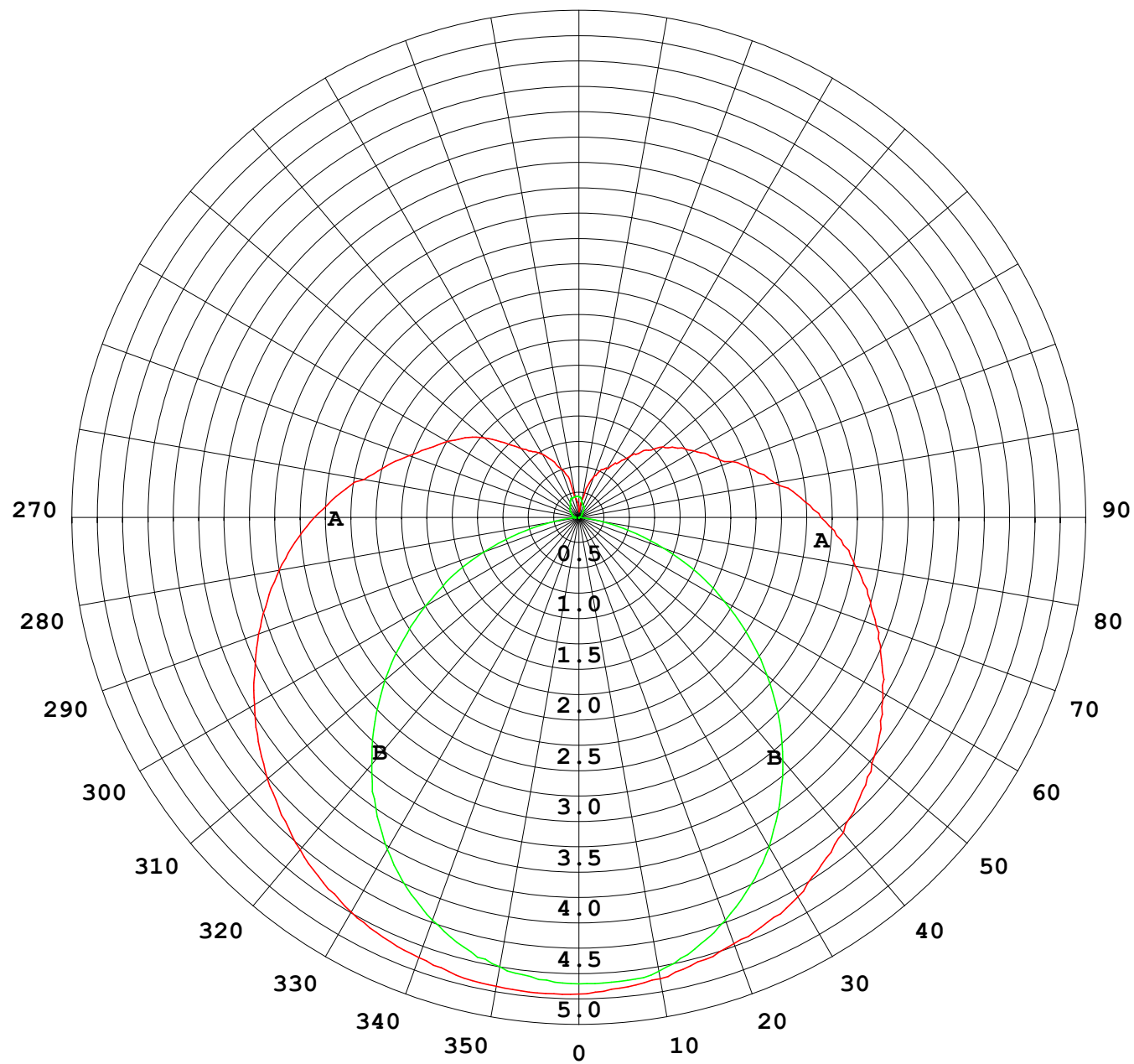
## Photometric Data Table [cd]

33.0	3.889	4.357
36.0	3.754	4.292
39.0	3.638	4.227
42.0	3.487	4.151
45.0	3.342	4.071
48.0	3.196	3.976
51.0	3.045	3.880
54.0	2.884	3.780
57.0	2.728	3.664
60.0	2.568	3.558
63.0	2.407	3.453
66.0	2.241	3.337
69.0	2.075	3.227
72.0	1.909	3.106
75.0	1.759	2.996
78.0	1.623	2.890
81.0	1.492	2.780
84.0	1.372	2.674
87.0	1.261	2.568
90.0	1.176	2.453
93.0	1.090	2.352
96.0	1.020	2.252
99.0	0.9547	2.017
102.0	0.9190	1.890
105.0	0.7939	1.825
108.0	0.7704	1.734
111.0	0.7601	1.654
114.0	0.6884	1.583
117.0	0.6731	1.508
120.0	0.6030	1.438
123.0	0.5930	1.372
126.0	0.5527	1.312
129.0	0.5195	1.242
132.0	0.4923	1.126
135.0	0.4522	0.9702
138.0	0.4119	0.8495
141.0	0.3668	0.7394
144.0	0.3486	0.6937
147.0	0.3166	0.6334
150.0	0.3049	0.5781
153.0	0.3004	0.5078
156.0	0.2959	0.4524
159.0	0.2914	0.4122
162.0	0.2869	0.3569
165.0	0.2824	0.3167
168.0	0.2779	0.3083
171.0	0.2712	0.3012
174.0	0.2512	0.2902
177.0	0.2311	0.2715
180.0	0.2111	0.1960

C Range: 0 - 360DEG  
 C Interval: 30.0DEG  
 Test Speed: HIGH  
 Temperature:25.3DEG  
 Operators:LPC  
 Test Date:2021-12-17

γ Range: 0 - 180DEG  
 γ Interval: 1.0DEG  
 Test System:EVERFINE GO-2000B\_V1 SYSTEM V2.0.362  
 Humidity:65.0%  
 Test Distance:9.200m [K=1.0000]  
 Remarks:

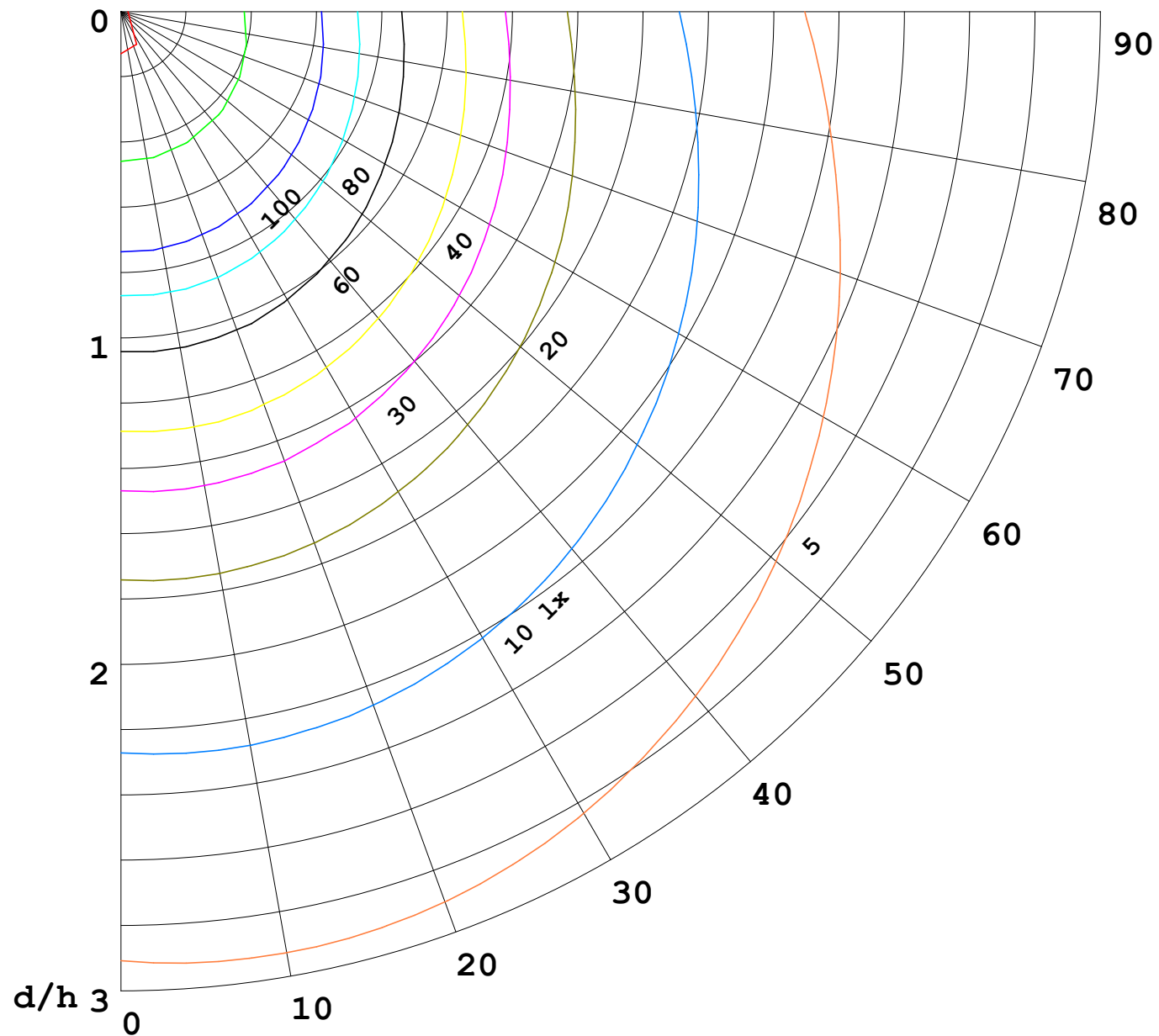
I (cd)





1000 lm

$\kappa = 1$



F = 5000 lm  
 K = 0.7  
 Hcc = 0.0 m  
 Hfc = 0.0 m  
 Eave = 100 lx

	Pcc	Pw	Pfc
—	70	50	30
—	50	30	20

