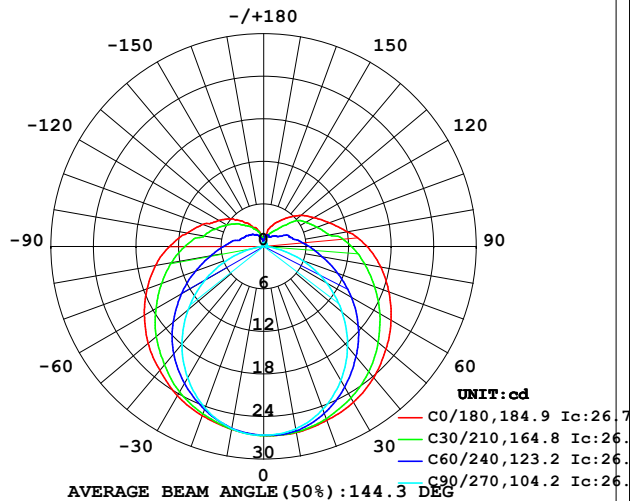


## LUMINAIRE PHOTOMETRIC TEST REPORT

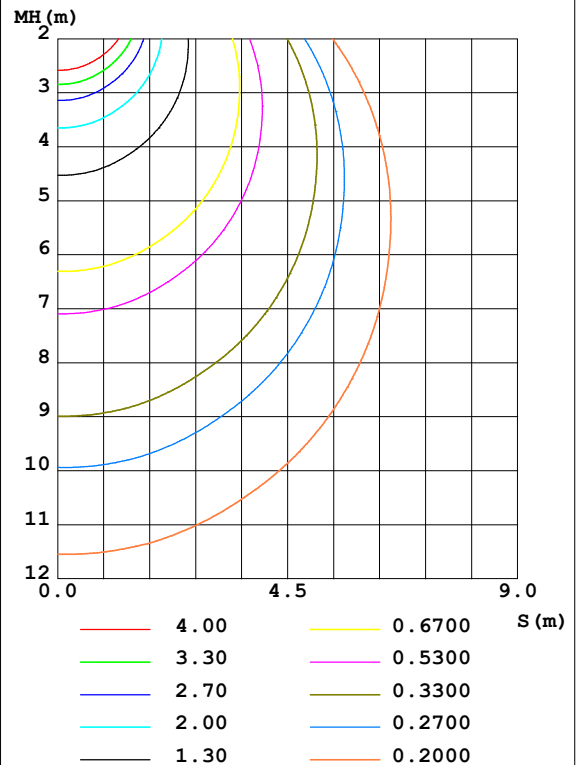
Test:U:24.00V I:0.3203A P:7.687W PF:1.000 Freq:50.00Hz Lamp Flux:130.683x1 lm		
NAME: SF21-24V-5050-70-DMX4-RGBW(3000)-W	TYPE: 硅胶	WEIGHT:
SPEC.:	DIM.: 28mm*11.5mm	SERIAL No.:2021121610
MFR.: OLYMPIA	SUR.:1*0.016	Shielding Angle:

DATA OF LAMP		PHOTOMETRIC DATA Eff: 17.00 lm/W			
MODEL	5050	I <sub>max</sub> (cd)	26.72	S/MH (C0/180)	1.37
NOMINAL POWER (W)	4.5	LOR (%)	100.0	S/MH (C90/270)	1.21
RATED VOLTAGE (V)	24	TOTAL FLUX (lm)	130.68	η UP, DN (C0-180)	11.2, 39.4
NOMINAL FLUX (lm)	130.683	CIE CLASS	SEMI-D.	η UP, DN (C180-360)	10.8, 38.6
LAMPS INSIDE	1	η up (%)	22.0	CIBSE SHR NOM	1.50
TEST VOLTAGE (V)	24	η down (%)	78.0	CIBSE SHR MAX	1.55

LUMINOUS INTENSITY DISTRIBUTION DIAGRAM



C0 PLANE ISOLUX DIAGRAM (UNIT: lx)



C Range: 0 - 360DEG  
 C Interval: 30.0DEG  
 Test Speed: HIGH  
 Temperature: 25.3DEG  
 Operators: LPC  
 Test Date: 2021-12-16

γ Range: 0 - 180DEG  
 γ Interval: 1.0DEG  
 Test System: EVERFINE GO-2000B\_V1 SYSTEM V2.0.362  
 Humidity: 65.0%  
 Test Distance: 9.200m [K=1.0000]  
 Remarks:

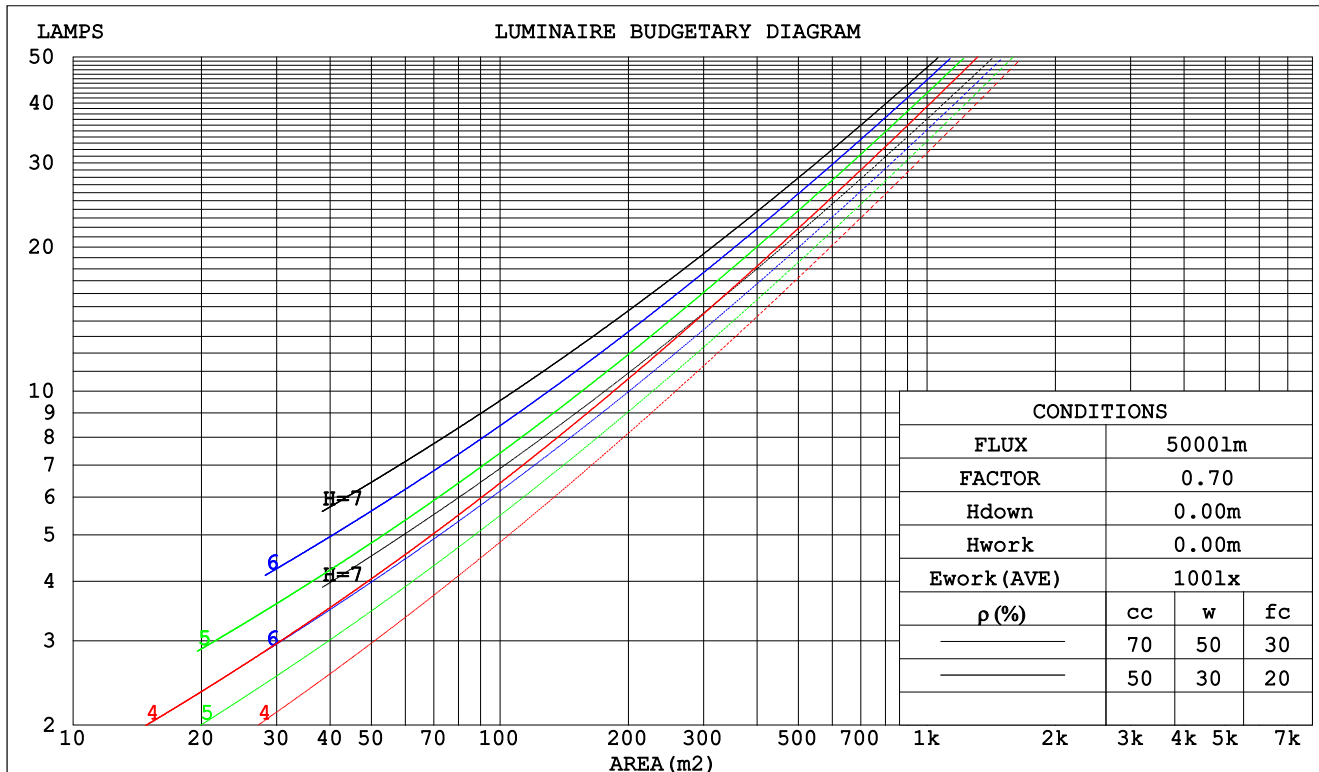




## CU AND LUMINAIRE BUDGETARY ESTIMATE DIAGRAM

Test:U:24.00V I:0.3203A P:7.687W PF:1.000 Freq:50.00Hz Lamp Flux:130.683x1 lm		
NAME: SF21-24V-5050-70-DMX4-RGBW(3000)-W	TYPE: 硅胶	WEIGHT:
SPEC.:	DIM.: 28mm*11.5mm	SERIAL No.:2021121610
MFR.: OLYMPIA	SUR.:1*0.016	Shielding Angle:

pcc	80%			70%			50%			30%			10%			0
pw	50%	30%	10%	50%	30%	10%	50%	30%	10%	50%	30%	10%	50%	30%	10%	0
pfc	20%			20%			20%			20%			20%			0
RCR	Coefficients of Utilization(CU)															
	RCR:Room Cavity Ratio															
0.0	1.14	1.14	1.14	1.09	1.09	1.09	.99	.99	.99	.90	.90	.90	.82	.82	.82	.78
1.0	.95	.89	.84	.90	.85	.81	.82	.78	.74	.74	.71	.68	.67	.65	.62	.59
2.0	.81	.73	.66	.77	.70	.64	.70	.64	.59	.63	.59	.54	.57	.53	.50	.47
3.0	.70	.61	.54	.67	.59	.52	.61	.54	.48	.55	.49	.45	.50	.45	.41	.38
4.0	.62	.52	.45	.59	.50	.43	.53	.46	.40	.48	.42	.38	.44	.39	.35	.32
5.0	.55	.45	.38	.52	.43	.37	.47	.40	.34	.43	.37	.32	.39	.34	.30	.27
6.0	.49	.40	.33	.47	.38	.32	.43	.35	.30	.39	.33	.28	.35	.30	.26	.23
7.0	.44	.35	.29	.42	.34	.28	.39	.31	.26	.35	.29	.24	.32	.27	.23	.20
8.0	.40	.31	.25	.38	.30	.25	.35	.28	.23	.32	.26	.22	.29	.24	.20	.18
9.0	.37	.28	.23	.35	.27	.22	.32	.25	.21	.30	.24	.19	.27	.22	.18	.16
10.0	.34	.26	.20	.32	.25	.20	.30	.23	.19	.27	.22	.18	.25	.20	.16	.15



C Range: 0 - 360DEG  
 C Interval: 30.0DEG  
 Test Speed: HIGH  
 Temperature:25.3DEG  
 Operators:LPC  
 Test Date:2021-12-16

γ Range: 0 - 180DEG  
 γ Interval: 1.0DEG  
 Test System:EVERFINE GO-2000B\_V1 SYSTEM V2.0.362  
 Humidity:65.0%  
 Test Distance:9.200m [K=1.0000]  
 Remarks:

## WEC AND CCEC

Test:U:24.00V I:0.3203A P:7.687W PF:1.000 Freq:50.00Hz Lamp Flux:130.683x1 lm		
NAME: SF21-24V-5050-70-DMX4-RGBW(3000)-W	TYPE: 硅胶	WEIGHT:
SPEC.:	DIM.: 28mm*11.5mm	SERIAL No.:2021121610
MFR.: OLYMPIA	SUR.:1*0.016	Shielding Angle:

pcc	80%			70%			50%			30%			10%			0	
pw	50%	30%	10%	50%	30%	10%	50%	30%	10%	50%	30%	10%	50%	30%	10%	0	
pfc	20%			20%			20%			20%			20%			0	
RCR	RCR:Room Cavity Ratio						Wall Exitance Coefficients(WEC)										
0.0																	
1.0	.386	.220	.070	.372	.212	.067	.346	.199	.063	.322	.186	.060	.300	.174	.056		
2.0	.333	.182	.056	.320	.176	.054	.297	.165	.051	.275	.154	.048	.255	.144	.045		
3.0	.295	.157	.047	.284	.152	.046	.262	.142	.043	.242	.133	.041	.224	.124	.038		
4.0	.265	.138	.041	.255	.133	.039	.236	.125	.037	.218	.117	.035	.201	.109	.033		
5.0	.241	.123	.036	.232	.119	.035	.214	.111	.033	.197	.104	.031	.182	.097	.029		
6.0	.221	.111	.032	.212	.107	.031	.196	.100	.029	.181	.094	.028	.167	.088	.026		
7.0	.204	.101	.029	.196	.098	.028	.181	.091	.026	.167	.086	.025	.154	.080	.024		
8.0	.189	.092	.026	.182	.089	.025	.168	.084	.024	.155	.079	.023	.143	.073	.021		
9.0	.176	.085	.024	.169	.083	.023	.157	.077	.022	.145	.073	.021	.134	.068	.020		
10.0	.165	.079	.022	.158	.077	.021	.147	.072	.020	.136	.067	.019	.125	.063	.018		

pcc	80%			70%			50%			30%			10%			0
pw	50%	30%	10%	50%	30%	10%	50%	30%	10%	50%	30%	10%	50%	30%	10%	0
pfc	20%			20%			20%			20%			20%			0
RCR	RCR:Room Cavity Ratio						Ceiling Cavity Exitance Coefficients(CCEC)									
0.0	.358	.358	.358	.306	.306	.306	.209	.209	.209	.120	.120	.120	.038	.038	.038	
1.0	.355	.325	.297	.303	.279	.256	.208	.192	.177	.119	.111	.103	.038	.036	.033	
2.0	.348	.302	.263	.298	.260	.228	.204	.180	.159	.118	.105	.093	.038	.034	.030	
3.0	.340	.286	.242	.292	.246	.210	.200	.171	.147	.116	.100	.087	.037	.032	.028	
4.0	.333	.273	.228	.285	.236	.198	.196	.165	.139	.114	.096	.082	.037	.031	.027	
5.0	.325	.263	.218	.279	.228	.190	.192	.159	.134	.111	.094	.079	.036	.031	.026	
6.0	.318	.256	.211	.273	.221	.184	.188	.155	.130	.109	.091	.077	.035	.030	.026	
7.0	.311	.249	.206	.267	.216	.179	.185	.151	.127	.107	.089	.076	.035	.029	.025	
8.0	.304	.244	.202	.262	.211	.176	.181	.148	.125	.105	.088	.074	.034	.029	.025	
9.0	.298	.239	.199	.257	.207	.174	.178	.146	.123	.104	.086	.074	.034	.028	.024	
10.0	.292	.235	.197	.252	.204	.172	.175	.143	.122	.102	.085	.073	.033	.028	.024	

C Range: 0 - 360DEG  
 C Interval: 30.0DEG  
 Test Speed: HIGH  
 Temperature:25.3DEG  
 Operators:LPC  
 Test Date:2021-12-16

γ Range: 0 - 180DEG  
 γ Interval: 1.0DEG  
 Test System:EVERFINE GO-2000B\_V1 SYSTEM V2.0.362  
 Humidity:65.0%  
 Test Distance:9.200m [K=1.0000]  
 Remarks:

UGR(Unified Glare Rating) Table

Test:U:24.00V I:0.3203A P:7.687W PF:1.000 Freq:50.00Hz Lamp Flux:130.683x1 lm										
NAME: SF21-24V-5050-70-DMX4-RGBW(3000)-W					TYPE: 硅胶			WEIGHT:		
SPEC.:					DIM.: 28mm*11.5mm			SERIAL No.:2021121610		
MFR.: OLYMPIA					SUR.:1*0.016			Shielding Angle:		
ceiling/cavity	0.7	0.7	0.5	0.5	0.3	0.7	0.7	0.5	0.5	0.3
walls	0.5	0.3	0.5	0.3	0.3	0.5	0.3	0.5	0.3	0.3
working plane	0.2	0.2	0.2	0.2	0.2	0.2	0.2	0.2	0.2	0.2
Room dimensions	Viewed crosswise					Viewed endwise				
x = 2H y = 2H	22.1	23.5	22.7	24.0	24.7	19.5	20.9	20.1	21.4	22.1
3H	24.9	26.2	25.5	26.8	27.4	21.0	22.2	21.5	22.8	23.4
4H	26.5	27.7	27.1	28.3	29.0	21.5	22.7	22.1	23.3	24.0
6H	28.3	29.4	28.9	30.0	30.7	21.8	22.9	22.5	23.5	24.3
8H	29.2	30.3	29.9	30.9	31.7	21.9	23.0	22.5	23.6	24.3
12H	30.4	31.4	31.0	32.0	32.8	21.9	22.9	22.6	23.6	24.3
4H 2H	22.7	23.8	23.3	24.4	25.2	20.8	22.0	21.4	22.6	23.3
3H	25.7	26.8	26.4	27.4	28.2	22.6	23.6	23.2	24.2	25.0
4H	27.5	28.4	28.2	29.1	29.9	23.4	24.3	24.0	25.0	25.7
6H	29.5	30.3	30.2	31.0	31.8	24.0	24.8	24.6	25.5	26.3
8H	30.6	31.4	31.3	32.1	32.9	24.1	24.9	24.9	25.6	26.5
12H	31.8	32.6	32.6	33.3	34.1	24.3	25.0	25.0	25.7	26.6
8H 4H	27.8	28.6	28.6	29.3	30.2	24.6	25.4	25.3	26.1	27.0
6H	30.1	30.8	30.9	31.5	32.4	25.7	26.3	26.4	27.1	28.0
8H	31.5	32.0	32.2	32.8	33.7	26.1	26.7	26.9	27.5	28.4
12H	33.0	33.5	33.7	34.3	35.2	26.5	27.0	27.3	27.8	28.7
12H 4H	27.9	28.6	28.6	29.3	30.2	25.1	25.8	25.8	26.5	27.4
6H	30.2	30.8	31.0	31.6	32.5	26.4	27.0	27.1	27.7	28.6
8H	31.7	32.2	32.5	33.0	33.9	27.1	27.6	27.8	28.4	29.3
Variations with the observer position at spacings:										
S = 1.0H	+ 0.1 / - 0.1					+ 0.1 / - 0.1				
1.5H	+ 0.2 / - 0.3					+ 0.2 / - 0.3				
2.0H	+ 0.2 / - 0.3					+ 0.3 / - 0.4				

CIE Pub.117, 130.7 lm Total Lamp Luminous Flux Correct (8log(F/F0) = -7.1)

C Range: 0 - 360DEG  
 C Interval: 30.0DEG  
 Test Speed: HIGH  
 Temperature:25.3DEG  
 Operators:LPC  
 Test Date:2021-12-16

γ Range: 0 - 180DEG  
 γ Interval: 1.0DEG  
 Test System:EVERFINE GO-2000B\_V1 SYSTEM V2.0.362  
 Humidity:65.0%  
 Test Distance:9.200m [K=1.0000]  
 Remarks:

### UTILIZATION FACTORS TABLE

Test:U:24.00V I:0.3203A P:7.687W PF:1.000 Freq:50.00Hz Lamp Flux:130.683x1 lm		
NAME: SF21-24V-5050-70-DMX4-RGBW(3000)-W	TYPE:硅胶	WEIGHT:
SPEC.:	DIM.: 28mm*11.5mm	SERIAL No.:2021121610
MFR.: OLYMPIA	SUR.:1*0.016	Shielding Angle:

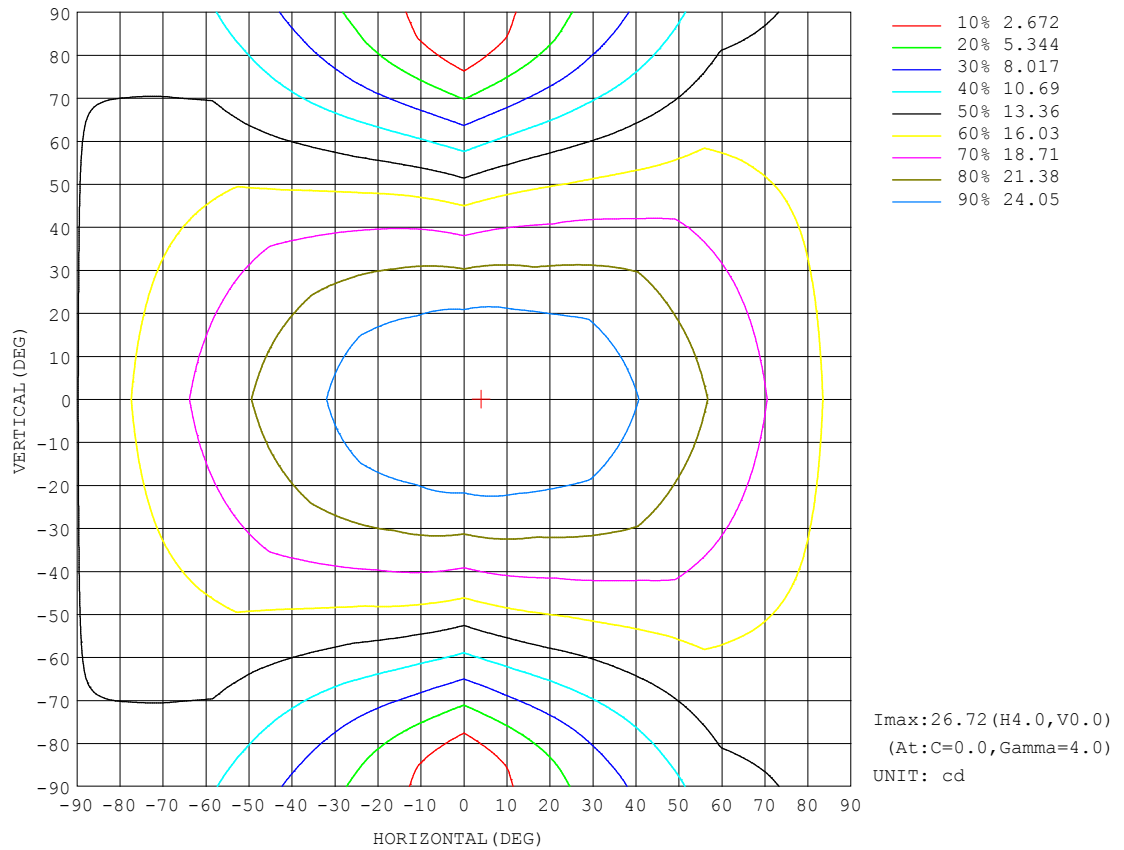
REFLECTANCE										
Ceiling	0.8	0.8	0.8	0.7	0.7	0.7	0.5	0.5	0.5	0
Walls	0.7	0.5	0.3	0.7	0.5	0.3	0.7	0.5	0.3	0
Working plane	0.2	0.2	0.2	0.2	0.2	0.2	0.2	0.2	0.2	0
ROOM INDEX	UTILIZATION FACTORS (PERCENT) $k(RI) \times RCR = 5$									
$k = 0.60$	46	34	27	45	34	27	43	33	26	19
0.80	56	43	34	54	42	34	51	40	33	25
1.00	63	50	42	61	49	41	57	49	40	31
1.25	70	57	49	68	56	48	63	53	46	36
1.50	75	63	54	72	61	53	67	58	51	40
2.00	83	71	63	79	69	61	73	65	58	46
2.50	87	77	69	83	74	67	77	69	63	49
3.00	91	81	74	87	78	71	80	73	67	53
4.00	96	87	81	91	84	78	84	78	73	57
5.00	99	92	86	94	88	82	86	81	77	60
ROOM INDEX	UF(total)									Direct
According to DIN EN 13032-2 2004			Suspended					SHRNOM = 1.25		

C Range: 0 - 360DEG  
C Interval: 30.0DEG  
Test Speed: HIGH  
Temperature:25.3DEG  
Operators:LPC  
Test Date:2021-12-16

$\gamma$  Range: 0 - 180DEG  
 $\gamma$  Interval: 1.0DEG  
Test System:EVERFINE GO-2000B\_V1 SYSTEM V2.0.362  
Humidity:65.0%  
Test Distance:9.200m [K=1.0000]  
Remarks:

## ISOCANDELA DIAGRAM

Test:U:24.00V I:0.3203A P:7.687W PF:1.000 Freq:50.00Hz Lamp Flux:130.683x1 lm		
NAME: SF21-24V-5050-70-DMX4-RGBW(3000)-W	TYPE:硅胶	WEIGHT:
SPEC.:	DIM.: 28mm*11.5mm	SERIAL No.:2021121610
MFR.: OLYMPIA	SUR.:1*0.016	Shielding Angle:



C Range: 0 - 360DEG  
C Interval: 30.0DEG  
Test Speed: HIGH  
Temperature:25.3DEG  
Operators:LPC  
Test Date:2021-12-16

```

γ Range: 0 - 180DEG
γ Interval: 1.0DEG
Test System:EVERFINE GO-2000B_V1 SYSTEM V2.0.362
Humidity:65.0%
Test Distance:9.200m [K=1.0000]
Remarks:

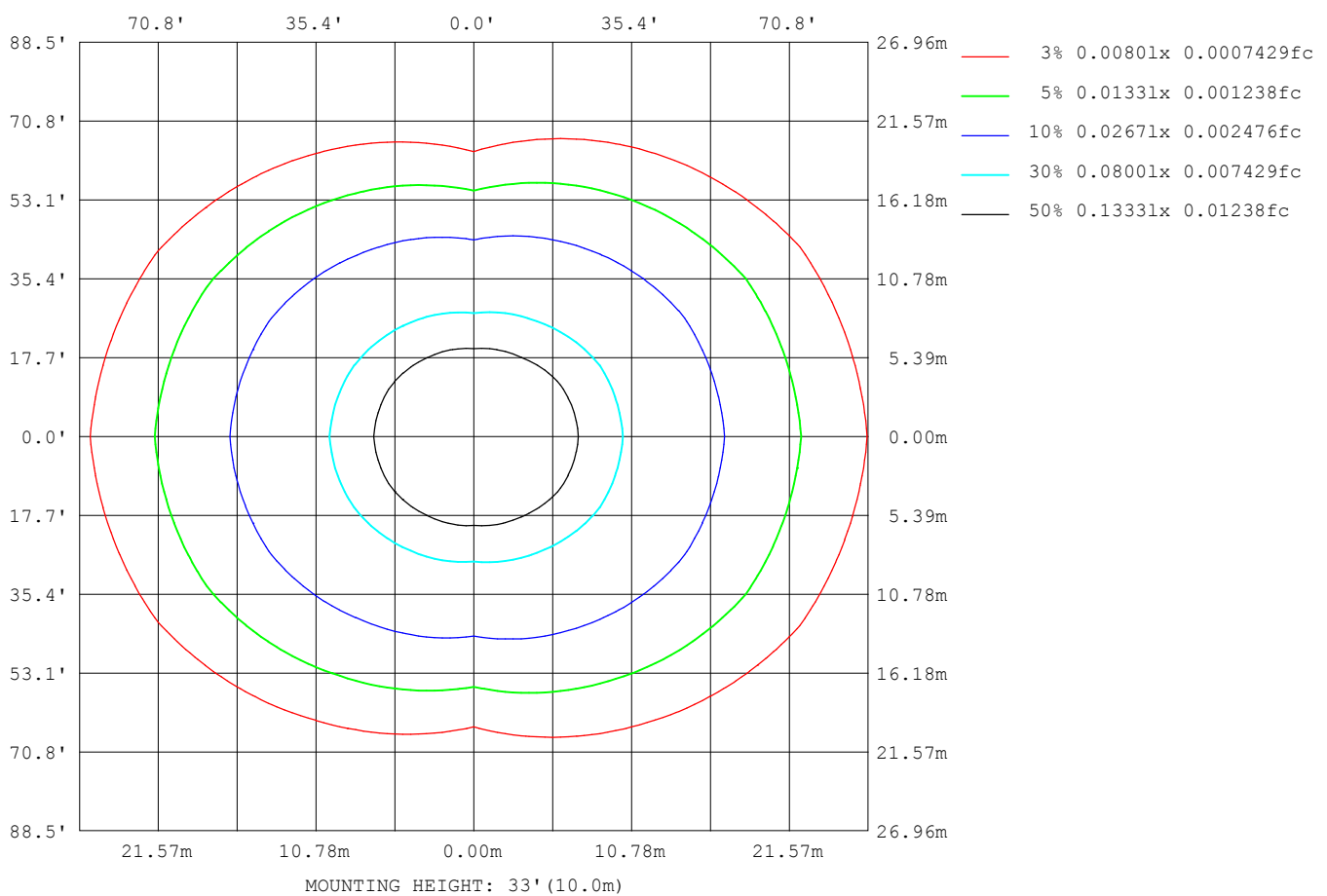
```





## ISOLUX DIAGRAM

Test:U:24.00V I:0.3203A P:7.687W PF:1.000 Freq:50.00Hz Lamp Flux:130.683x1 lm		
NAME: SF21-24V-5050-70-DMX4-RGBW(3000)-W	TYPE:硅胶	WEIGHT:
SPEC.:	DIM.: 28mm*11.5mm	SERIAL No.:2021121610
MFR.: OLYMPIA	SUR.:1*0.016	Shielding Angle:



C Range: 0 - 360DEG  
C Interval: 30.0DEG  
Test Speed: HIGH  
Temperature:25.3DEG  
Operators:LPC  
Test Date:2021-12-16

```

Range: 0 - 180DEG
Interval: 1.0DEG
Test System:EVERFINE GO-2000B_V1 SYSTEM V2.0.362
Humidity:65.0%
Test Distance:9.200m [K=1.0000]
Remarks:

```





## LUMINOUS DISTRIBUTION INTENSITY DATA

Test:U:24.00V I:0.3203A P:7.687W PF:1.000 Freq:50.00Hz Lamp Flux:130.683x1 lm		
NAME: SF21-24V-5050-70-DMX4-RGBW(3000)-W	TYPE: 硅胶	WEIGHT:
SPEC.:	DIM.: 28mm*11.5mm	SERIAL No.:2021121610
MFR.: OLYMPIA	SUR.:1*0.016	Shielding Angle:

Table--1

UNIT: cd

C (DEG) γ (DEG)	0	30	60	90	120	150	180	210	240	270	300	330						
0	26.7	26.7	26.6	26.6	26.7	26.7	26.7	26.7	26.6	26.6	26.7	26.7						
5	26.7	26.7	26.7	26.5	26.5	26.5	26.5	26.5	26.4	26.5	26.6	26.7						
10	26.7	26.6	26.4	26.1	26.1	26.1	26.2	26.2	26.0	26.1	26.3	26.6						
15	26.4	26.3	25.8	25.4	25.4	25.7	25.8	25.7	25.3	25.3	25.7	26.3						
20	26.1	25.9	25.0	24.4	24.6	25.1	25.4	25.1	24.5	24.2	24.8	25.7						
25	25.8	25.3	24.0	23.2	23.6	24.5	24.9	24.5	23.5	22.9	23.8	25.1						
30	25.4	24.7	22.9	21.8	22.4	23.7	24.3	23.7	22.3	21.5	22.5	24.6						
35	24.8	23.9	21.6	20.2	21.2	22.8	23.6	22.8	21.1	19.8	21.2	23.9						
40	24.2	23.1	20.3	18.4	19.8	21.8	22.8	21.8	19.8	18.0	20.0	23.1						
45	23.4	22.1	18.9	16.5	18.3	20.8	22.1	20.8	18.3	16.0	18.7	22.1						
50	22.5	21.1	17.4	14.5	16.8	19.8	21.3	19.8	16.7	14.0	17.2	21.1						
55	21.7	20.0	15.9	12.4	15.1	18.7	20.4	18.7	15.0	11.8	15.7	20.0						
60	20.8	18.9	14.3	10.2	13.5	17.6	19.4	17.5	13.4	9.60	14.2	18.9						
65	19.8	17.8	12.7	8.04	11.9	16.5	18.5	16.4	11.8	7.41	12.6	17.8						
70	18.8	16.7	11.1	5.85	10.4	15.4	17.5	15.3	10.3	5.22	11.0	16.7						
75	17.8	15.6	9.68	3.71	8.94	14.3	16.5	14.3	8.82	3.16	9.58	15.6						
80	16.8	14.5	8.38	1.85	7.72	13.3	15.5	13.2	7.58	1.42	8.28	14.5						
85	15.7	13.5	7.30	0.52	6.70	12.2	14.4	12.2	6.55	0.30	7.18	13.5						
90	14.6	12.4	6.43	0.38	5.84	11.2	13.3	11.1	5.67	0.25	6.31	12.4						
95	13.4	11.4	5.63	0.37	5.19	10.2	12.2	10.1	5.01	0.24	5.57	11.4						
100	12.0	9.38	5.01	0.40	4.71	8.57	11.0	8.58	4.50	0.24	4.99	9.51						
105	10.8	8.68	4.27	0.42	3.59	8.04	10.0	7.98	3.52	0.28	4.21	8.87						
110	9.85	8.03	3.99	0.43	3.42	7.14	9.14	7.19	3.34	0.29	4.06	8.15						
115	8.97	7.42	3.75	0.45	3.25	6.49	8.00	6.67	3.08	0.30	3.64	7.48						
120	8.18	6.87	3.05	0.46	3.12	5.98	7.36	6.07	2.96	0.30	3.21	6.91						
125	7.50	6.37	2.51	0.48	2.87	5.53	6.71	5.51	2.70	0.33	2.89	6.38						
130	6.82	5.51	2.31	0.50	2.65	5.05	6.08	5.01	2.51	0.36	2.70	5.71						
135	6.07	4.23	2.12	0.51	2.54	4.52	5.39	4.32	2.42	0.37	2.32	4.72						
140	5.32	3.39	1.90	0.52	2.28	3.91	4.68	3.89	2.22	0.38	2.06	3.76						
145	4.65	2.77	1.68	0.54	2.10	3.45	4.06	3.48	2.04	0.43	1.83	3.17						
150	4.06	2.38	1.58	0.56	1.97	3.04	3.30	2.92	1.97	0.46	1.63	2.67						
155	3.54	2.00	1.72	0.57	1.73	2.63	2.95	2.62	1.71	0.48	1.59	2.25						
160	3.00	1.62	1.70	0.57	1.46	2.20	2.51	2.25	1.37	0.50	1.56	1.80						
165	2.44	1.36	1.65	0.57	1.18	1.80	2.03	1.77	1.15	0.52	1.52	1.58						
170	1.18	1.40	1.51	0.57	0.94	1.31	1.08	1.41	0.92	0.53	1.46	1.53						
175	1.06	1.31	1.15	0.57	0.60	0.85	0.77	0.92	0.58	0.53	1.11	1.38						
180	0.61	0.60	0.59	0.57	0.58	0.58	0.61	0.61	0.58	0.54	0.54	0.59						

C Range: 0 - 360DEG  
C Interval: 30.0DEG  
Test Speed: HIGH  
Temperature:25.3DEG  
Operators:LPC  
Test Date:2021-12-16

γ Range: 0 - 180DEG  
γ Interval: 1.0DEG  
Test System:EVERFINE GO-2000B\_V1 SYSTEM V2.0.362  
Humidity:65.0%  
Test Distance:9.200m [K=1.0000]  
Remarks:

## Photometric Data Table [cd]

G/C	0.0	30.0	60.0	90.0	120.0	150.0	180.0	210.0	240.0	270.0
0.0	26.66	26.70	26.63	26.61	26.66	26.65	26.66	26.70	26.63	26.61
3.0	26.71	26.70	26.65	26.58	26.61	26.57	26.57	26.60	26.54	26.62
6.0	26.71	26.69	26.63	26.45	26.46	26.41	26.43	26.45	26.38	26.47
9.0	26.69	26.62	26.49	26.24	26.22	26.20	26.25	26.24	26.13	26.21
12.0	26.57	26.49	26.22	25.87	25.87	25.96	26.04	25.97	25.78	25.80
15.0	26.42	26.29	25.84	25.41	25.44	25.66	25.79	25.68	25.34	25.29
18.0	26.22	26.05	25.39	24.86	24.93	25.34	25.56	25.34	24.83	24.70
21.0	26.04	25.75	24.85	24.22	24.38	25.00	25.31	24.99	24.27	24.00
24.0	25.85	25.37	24.26	23.51	23.76	24.63	25.03	24.63	23.67	23.22
27.0	25.64	25.02	23.60	22.67	23.11	24.20	24.71	24.19	23.02	22.37
30.0	25.37	24.66	22.88	21.82	22.42	23.74	24.33	23.71	22.33	21.45
33.0	25.04	24.24	22.13	20.86	21.70	23.20	23.89	23.20	21.62	20.46
36.0	24.70	23.77	21.34	19.83	20.92	22.62	23.42	22.61	20.85	19.43
39.0	24.30	23.27	20.54	18.77	20.10	22.01	22.94	21.99	20.03	18.32
42.0	23.84	22.72	19.73	17.67	19.25	21.39	22.52	21.37	19.18	17.17
45.0	23.35	22.12	18.90	16.50	18.34	20.80	22.10	20.79	18.27	16.01
48.0	22.84	21.51	18.03	15.27	17.39	20.21	21.61	20.20	17.32	14.78
51.0	22.37	20.85	17.12	14.06	16.42	19.58	21.11	19.58	16.36	13.52
54.0	21.87	20.20	16.20	12.79	15.42	18.93	20.57	18.93	15.36	12.25
57.0	21.33	19.57	15.25	11.51	14.44	18.25	19.99	18.25	14.36	10.94
60.0	20.75	18.92	14.29	10.24	13.49	17.56	19.44	17.55	13.40	9.602
63.0	20.18	18.24	13.32	8.896	12.54	16.90	18.86	16.89	12.45	8.302
66.0	19.60	17.56	12.35	7.580	11.61	16.24	18.28	16.22	11.52	6.965
69.0	19.00	16.88	11.44	6.278	10.67	15.57	17.69	15.55	10.58	5.637
72.0	18.41	16.20	10.55	4.952	9.769	14.93	17.11	14.91	9.661	4.376
75.0	17.80	15.55	9.683	3.711	8.939	14.31	16.51	14.26	8.823	3.160
78.0	17.19	14.91	8.868	2.540	8.175	13.67	15.90	13.64	8.054	2.048
81.0	16.57	14.29	8.144	1.535	7.496	13.05	15.29	13.01	7.355	1.128
84.0	15.91	13.66	7.491	0.7417	6.878	12.43	14.65	12.40	6.732	0.3842
87.0	15.25	13.03	6.918	0.4028	6.335	11.78	13.97	11.74	6.185	0.2464
90.0	14.58	12.40	6.435	0.3759	5.837	11.16	13.30	11.12	5.673	0.2452
93.0	13.89	11.77	5.967	0.3769	5.419	10.57	12.65	10.53	5.255	0.2440
96.0	13.18	11.13	5.480	0.3770	5.082	10.00	12.01	9.963	4.904	0.2427
99.0	12.36	9.732	5.097	0.3971	4.786	8.644	11.17	8.663	4.593	0.2415
102.0	11.50	9.105	4.736	0.4072	4.206	8.362	10.58	8.384	4.148	0.2692
105.0	10.85	8.678	4.267	0.4172	3.594	8.040	10.03	7.977	3.518	0.2777
108.0	10.24	8.301	4.172	0.4272	3.467	7.693	9.481	7.620	3.452	0.2848
111.0	9.667	7.909	3.846	0.4366	3.389	6.975	8.973	7.107	3.276	0.2920
114.0	9.134	7.528	3.855	0.4447	3.277	6.613	8.150	6.796	3.106	0.2991
117.0	8.641	7.191	3.619	0.4523	3.132	6.251	7.718	6.409	3.010	0.3027
120.0	8.184	6.875	3.053	0.4624	3.116	5.980	7.357	6.072	2.965	0.3046
123.0	7.766	6.578	2.675	0.4794	3.001	5.724	6.979	5.735	2.874	0.3065
126.0	7.369	6.251	2.448	0.4855	2.795	5.427	6.592	5.389	2.664	0.3417
129.0	6.967	5.767	2.332	0.4926	2.689	5.150	6.215	5.102	2.587	0.3563
132.0	6.525	5.018	2.247	0.5016	2.589	4.839	5.826	4.811	2.473	0.3632
135.0	6.073	4.231	2.116	0.5076	2.538	4.522	5.391	4.318	2.422	0.3700
138.0	5.610	3.703	1.981	0.5177	2.383	4.241	4.874	4.012	2.321	0.3769
141.0	5.183	3.230	1.850	0.5277	2.247	3.814	4.456	3.785	2.141	0.3919
144.0	4.771	2.869	1.714	0.5378	2.131	3.587	4.145	3.564	2.050	0.4170
147.0	4.399	2.623	1.629	0.5580	2.076	3.266	3.813	3.308	1.980	0.4392
150.0	4.057	2.381	1.583	0.5617	1.966	3.044	3.299	2.921	1.969	0.4573
153.0	3.761	2.145	1.653	0.5654	1.825	2.774	2.926	2.744	1.799	0.4724
156.0	3.389	1.919	1.715	0.5657	1.679	2.537	2.924	2.529	1.632	0.4845
159.0	3.086	1.693	1.705	0.5661	1.519	2.281	2.662	2.327	1.422	0.5025
162.0	2.786	1.477	1.694	0.5664	1.338	2.070	2.341	2.162	1.281	0.5125
165.0	2.439	1.357	1.649	0.5667	1.182	1.799	2.034	1.770	1.145	0.5232
168.0	1.287	1.401	1.568	0.5670	1.041	1.492	1.175	1.559	1.035	0.5249
171.0	1.156	1.398	1.478	0.5673	0.8702	1.210	1.029	1.342	0.8585	0.5266
174.0	1.061	1.337	1.328	0.5676	0.6137	0.9688	0.8137	1.016	0.5879	0.5296
177.0	0.9957	0.9886	0.8311	0.5679	0.6031	0.5830	0.6728	0.6250	0.5830	0.5327
180.0	0.6131	0.5981	0.5930	0.5679	0.5830	0.5830	0.6081	0.6081	0.5830	0.5378
G/C	300.0	330.0								
0.0	26.66	26.65								
3.0	26.64	26.70								
6.0	26.56	26.68								
9.0	26.38	26.67								
12.0	26.08	26.50								
15.0	25.68	26.28								
18.0	25.20	25.96								
21.0	24.63	25.60								
24.0	24.00	25.25								
27.0	23.28	24.92								
30.0	22.52	24.58								

C Range: 0 - 360DEG  
 C Interval: 30.0DEG  
 Test Speed: HIGH  
 Temperature: 25.3DEG  
 Operators: LPC  
 Test Date: 2021-12-16

γ Range: 0 - 180DEG  
 γ Interval: 1.0DEG  
 Test System: EVERFINE GO-2000B\_V1 SYSTEM V2.0.362  
 Humidity: 65.0%  
 Test Distance: 9.200m [K=1.0000]  
 Remarks:

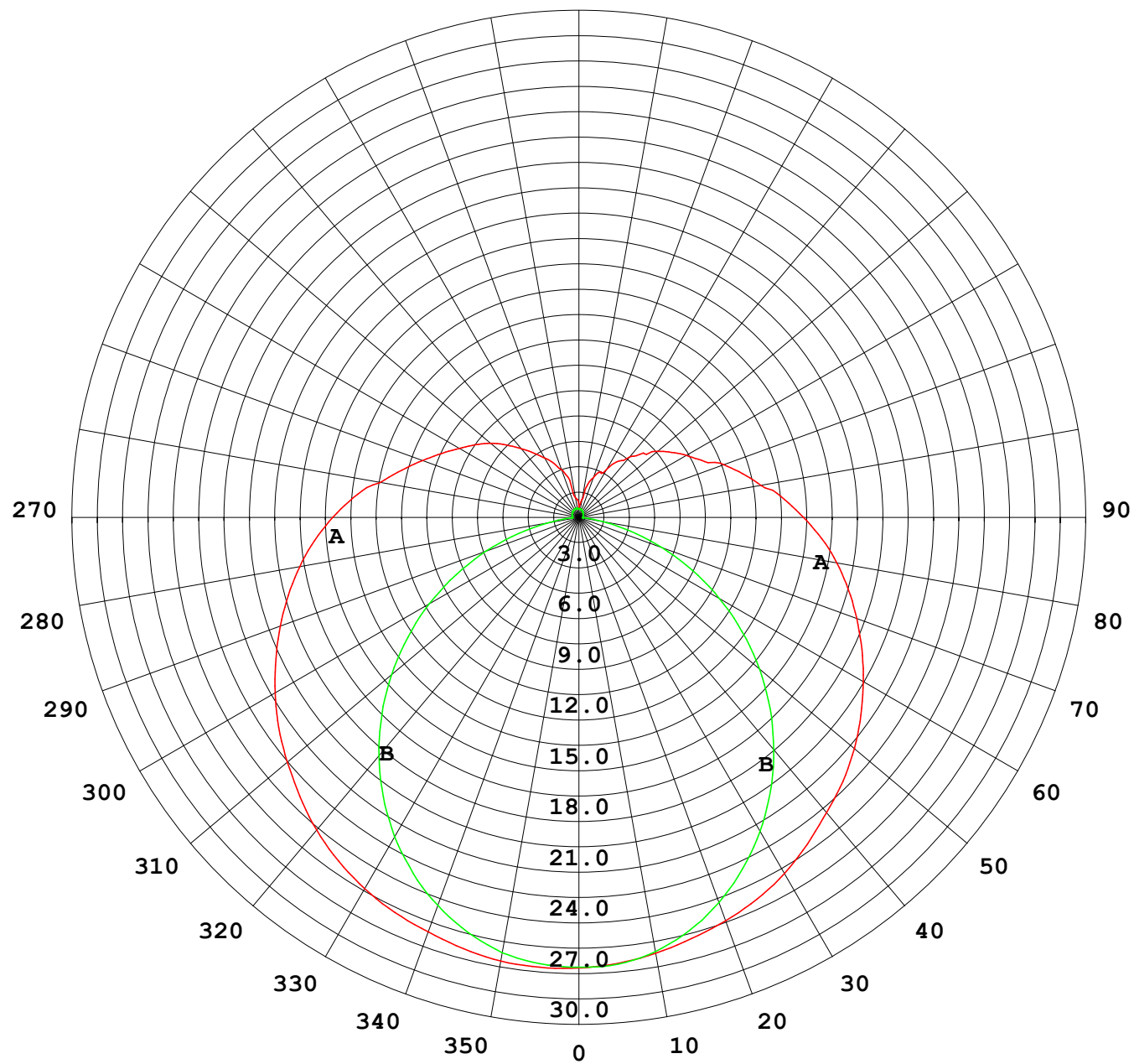
## Photometric Data Table [cd]

33.0	21.75	24.19
36.0	20.97	23.73
39.0	20.21	23.23
42.0	19.45	22.69
45.0	18.66	22.12
48.0	17.84	21.50
51.0	16.96	20.84
54.0	16.05	20.19
57.0	15.12	19.57
60.0	14.17	18.90
63.0	13.20	18.23
66.0	12.24	17.56
69.0	11.34	16.90
72.0	10.45	16.23
75.0	9.581	15.58
78.0	8.782	14.94
81.0	8.043	14.31
84.0	7.380	13.68
87.0	6.803	13.03
90.0	6.311	12.41
93.0	5.843	11.78
96.0	5.441	11.15
99.0	5.095	9.868
102.0	4.777	9.299
105.0	4.206	8.867
108.0	4.136	8.429
111.0	3.956	8.017
114.0	3.614	7.605
117.0	3.502	7.243
120.0	3.211	6.911
123.0	3.060	6.600
126.0	2.844	6.258
129.0	2.748	5.856
132.0	2.537	5.220
135.0	2.316	4.715
138.0	2.146	4.037
141.0	2.030	3.505
144.0	1.884	3.288
147.0	1.723	3.016
150.0	1.630	2.675
153.0	1.607	2.398
156.0	1.583	2.157
159.0	1.568	1.886
162.0	1.548	1.669
165.0	1.518	1.578
168.0	1.497	1.558
171.0	1.427	1.513
174.0	1.260	1.418
177.0	0.8064	1.078
180.0	0.5428	0.5930

C Range: 0 - 360DEG  
 C Interval: 30.0DEG  
 Test Speed: HIGH  
 Temperature: 25.3DEG  
 Operators: LPC  
 Test Date: 2021-12-16

γ Range: 0 - 180DEG  
 γ Interval: 1.0DEG  
 Test System: EVERFINE GO-2000B\_V1 SYSTEM V2.0.362  
 Humidity: 65.0%  
 Test Distance: 9.200m [K=1.0000]  
 Remarks:

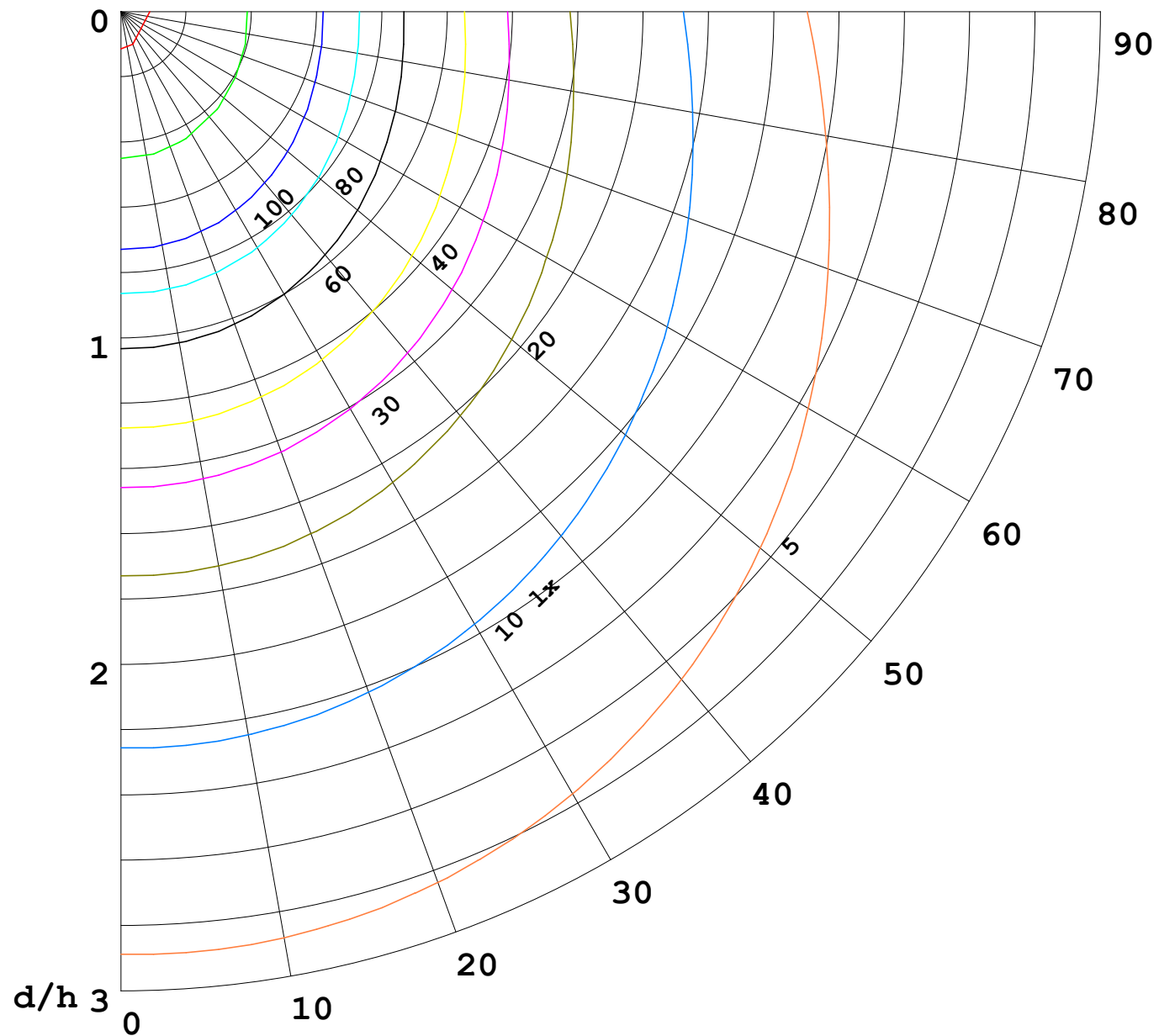
I (cd)





1000 lm

$\kappa = 1$



F = 5000 lm  
 K = 0.7  
 Hcc = 0.0 m  
 Hfc = 0.0 m  
 Eave = 100 lx

	Pcc	Pw	Pfc
—	70	50	30
—	50	30	20

