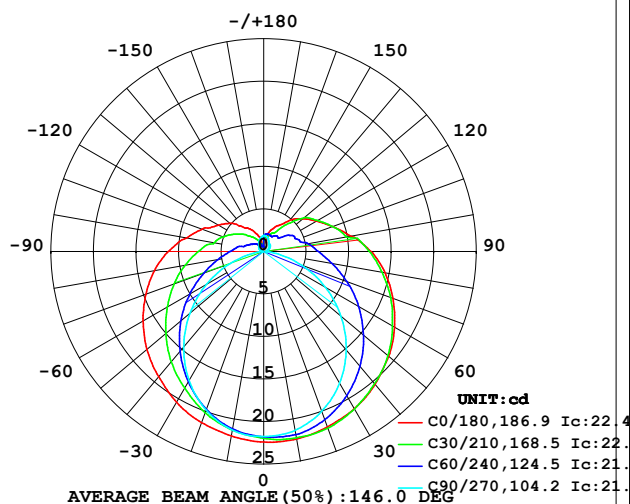


## LUMINAIRE PHOTOMETRIC TEST REPORT

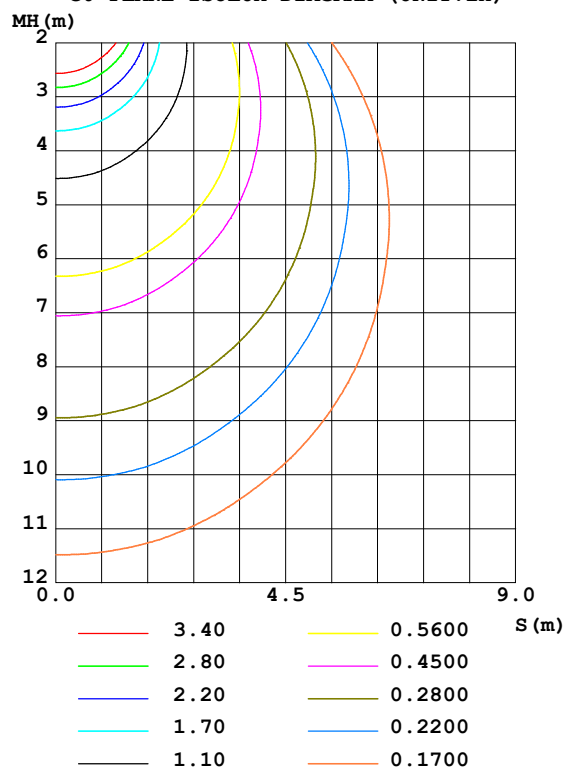
Test:U:24.00V I:0.1903A P:4.567W PF:1.000 Freq:50.00Hz Lamp Flux:110.577x1 lm		
NAME: SF21-24V-5050-56-DMX4SM-RGBW(4000K)-W	TYPE: 硅胶	WEIGHT:
SPEC.:	DIM.: 28mm*11.5mm	SERIAL No.:2021121509
MFR.: OLYMPIA	SUR.:1*0.016	Shielding Angle:

DATA OF LAMP		PHOTOMETRIC DATA Eff: 24.21 lm/W			
MODEL	5050	I <sub>max</sub> (cd)	22.44	S/MH (C0/180)	1.37
NOMINAL POWER(W)	3.75	LOR(%)	100.0	S/MH (C90/270)	1.21
RATED VOLTAGE(V)	24	TOTAL FLUX(lm)	110.58	η UP,DN(C0-180)	11.7,38.8
NOMINAL FLUX(lm)	110.577	CIE CLASS	SEMI-D.	η UP,DN(C180-360)	11.4,38.1
LAMPS INSIDE	1	η up (%)	23.1	CIBSE SHR NOM	1.50
TEST VOLTAGE(V)	24	η down (%)	76.9	CIBSE SHR MAX	1.55

LUMINOUS INTENSITY DISTRIBUTION DIAGRAM



C0 PLANE ISOLUX DIAGRAM (UNIT:lx)



C Range: 0 - 360DEG  
C Interval: 30.0DEG  
Test Speed: HIGH  
Temperature: 25.3DEG  
Operators: LPC  
Test Date: 2021-12-15

γ Range: 0 - 180DEG  
γ Interval: 1.0DEG  
Test System: EVERFINE GO-2000B\_V1 SYSTEM V2.0.362  
Humidity: 65.0%  
Test Distance: 9.200m [K=1.0000]  
Remarks:

## ZONAL FLUX DIAGRAM

## ZONAL FLUX DIAGRAM:

$\gamma$	C0	C45	C90	C135	C180	C225	C270	C315	$\gamma$	$\Phi$ zone	$\Phi$ total	%lum, lamp
10	22.40	22.04	21.35	21.19	22.02	21.24	21.32	21.95	0- 10	2.081	2.081	1.88,1.88
20	21.93	21.57	19.99	19.89	21.40	19.95	19.82	21.43	10- 20	6.009	8.090	7.32,7.32
30	21.34	20.46	17.86	18.12	20.48	18.13	17.53	20.36	20- 30	9.256	17.35	15.7,15.7
40	20.38	18.96	15.10	16.06	19.20	16.11	14.64	18.93	30- 40	11.53	28.88	26.1,26.1
50	19.18	17.19	11.86	13.81	17.92	13.87	11.33	17.23	40- 50	12.70	41.58	37.6,37.6
60	17.78	15.18	8.350	11.49	16.38	11.55	7.778	15.25	50- 60	12.76	54.34	49.1,49.1
70	16.17	13.15	4.761	9.301	14.74	9.350	4.229	13.24	60- 70	11.86	66.20	59.9,59.9
80	14.48	11.15	1.505	7.365	13.04	7.415	1.183	11.26	70- 80	10.30	76.50	69.2,69.2
90	12.62	9.433	0.3151	5.800	11.21	5.822	0.1844	9.549	80- 90	8.566	85.07	76.9,76.9
100	10.41	7.587	0.3420	4.518	9.220	4.526	0.2009	7.769	90-100	7.111	92.18	83.4,83.4
110	8.611	6.416	0.4927	3.600	7.713	3.594	0.4018	6.702	100-110	5.569	97.75	88.4,88.4
120	7.168	5.571	0.6987	2.817	6.196	2.903	0.6130	5.704	110-120	4.390	102.1	92.4,92.4
130	6.007	4.347	0.8897	2.271	5.155	2.297	0.7639	4.830	120-130	3.335	105.5	95.4,95.4
140	4.791	3.289	1.045	1.623	3.748	1.669	0.9145	3.564	130-140	2.293	107.8	97.5,97.5
150	3.544	2.294	1.257	1.125	2.989	1.174	1.146	2.689	140-150	1.406	109.2	98.7,98.7
160	2.745	2.080	1.573	0.6695	2.045	0.8657	1.477	2.236	150-160	0.8490	110.0	99.5,99.5
170	1.186	1.922	1.809	0.7242	0.8790	0.5797	1.728	2.015	160-170	0.4298	110.5	99.9,99.9
180	0.5227	1.538	1.895	1.751	0.5177	1.621	1.895	1.782	170-180	0.1232	110.6	100,100
DEG	LUMINOUS INTENSITY:cd									UNIT:lm		

Conical surface Flux(90deg): 35.151 lm

%lum = 31.8%

%lamp = 31.8%

Conical surface Flux(120deg): 54.344 lm

%lum = 49.1%

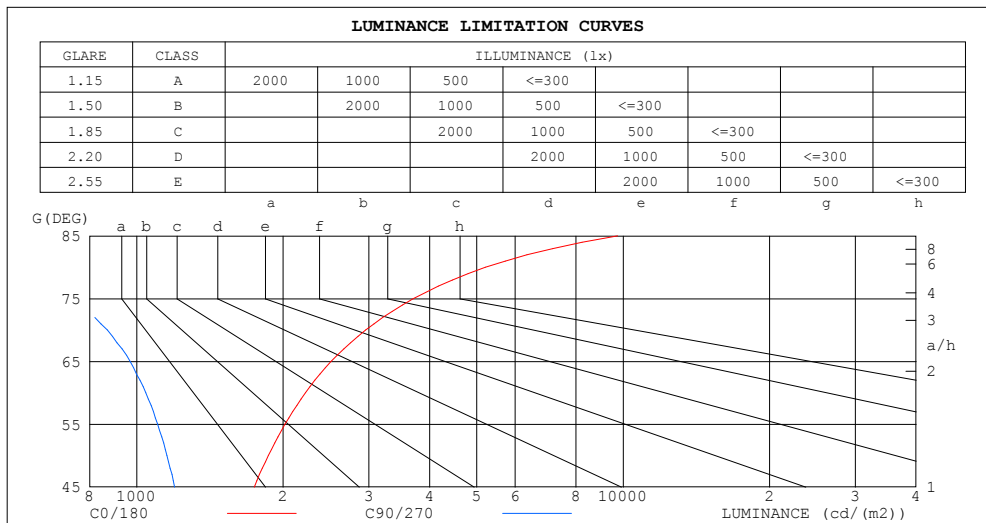
%lamp = 49.1%

C Range: 0 - 360DEG  
 C Interval: 30.0DEG  
 Test Speed: HIGH  
 Temperature:25.3DEG  
 Operators:LPC  
 Test Date:2021-12-15

$\gamma$  Range: 0 - 180DEG  
 $\gamma$  Interval: 1.0DEG  
 Test System:EVERFINE GO-2000B\_V1 SYSTEM V2.0.362  
 Humidity:65.0%  
 Test Distance:9.200m [K=1.0000]  
 Remarks:

## LUMINANCE LIMITATION CURVES

Test:U:24.00V I:0.1903A P:4.567W PF:1.000 Freq:50.00Hz Lamp Flux:110.577x1 lm		
NAME: SF21-24V-5050-56-DMX4SM-RGBW(4000K)-W	TYPE: 硅胶	WEIGHT:
SPEC.:	DIM.: 28mm*11.5mm	SERIAL No.:2021121509
MFR.: OLYMPIA	SUR.:1*0.016	Shielding Angle:



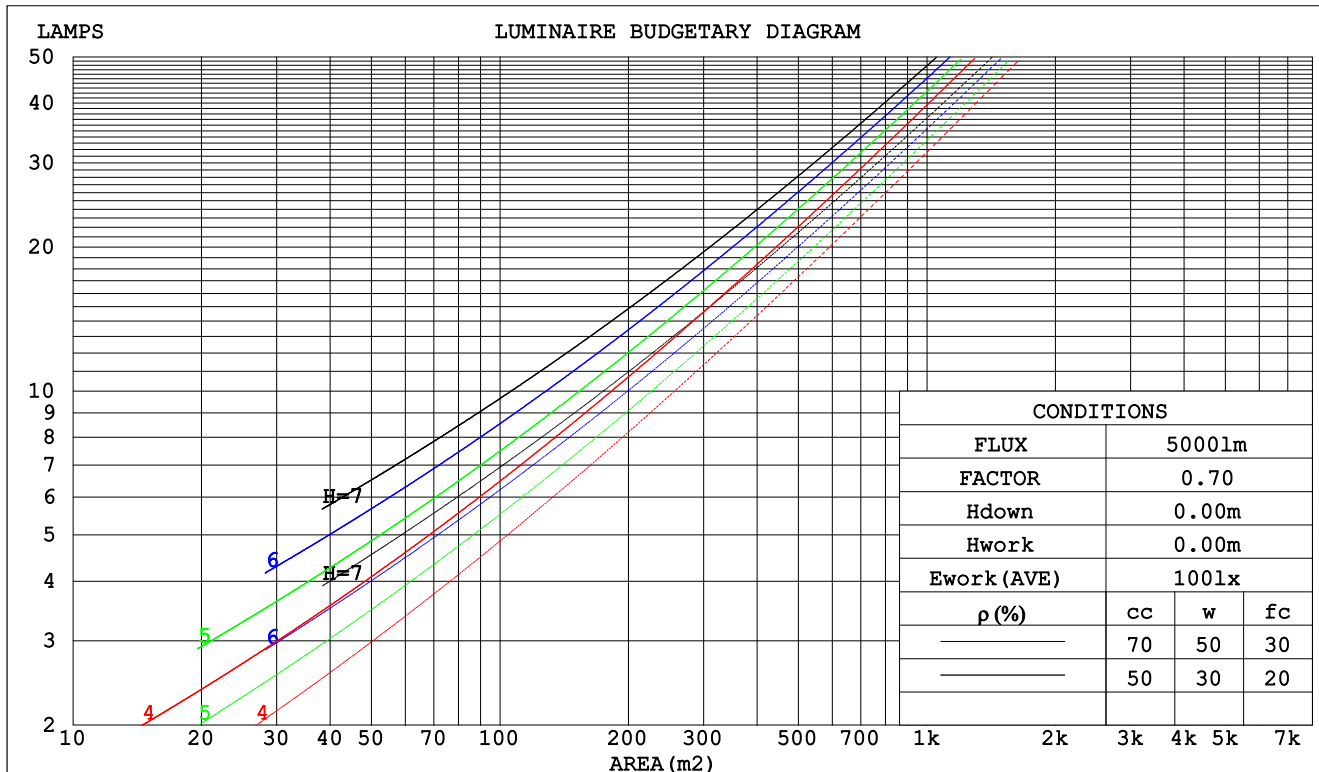
C Range: 0 - 360DEG  
C Interval: 30.0DEG  
Test Speed: HIGH  
Temperature:25.3DEG  
Operators:LPC  
Test Date:2021-12-15

γ Range: 0 - 180DEG  
γ Interval: 1.0DEG  
Test System:EVERFINE GO-2000B\_V1 SYSTEM V2.0.362  
Humidity:65.0%  
Test Distance:9.200m [K=1.0000]  
Remarks:

## CU AND LUMINAIRE BUDGETARY ESTIMATE DIAGRAM

Test:U:24.00V I:0.1903A P:4.567W PF:1.000 Freq:50.00Hz Lamp Flux:110.577x1 lm		
NAME: SF21-24V-5050-56-DMX4SM-RGBW(4000K)-W	TYPE: 硅胶	WEIGHT:
SPEC.:	DIM.: 28mm*11.5mm	SERIAL No.:2021121509
MFR.: OLYMPIA	SUR.:1*0.016	Shielding Angle:

pcc	80%			70%			50%			30%			10%			0
pw	50%	30%	10%	50%	30%	10%	50%	30%	10%	50%	30%	10%	50%	30%	10%	0
pfc	20%			20%			20%			20%			20%			0
RCR	RCR:Room Cavity Ratio						Coefficients of Utilization(CU)									
0.0	1.14	1.14	1.14	1.08	1.08	1.08	.98	.98	.98	.89	.89	.89	.81	.81	.81	.77
1.0	.94	.89	.84	.90	.85	.81	.81	.77	.74	.73	.70	.67	.66	.64	.61	.58
2.0	.81	.73	.66	.77	.70	.64	.69	.63	.59	.62	.58	.54	.56	.52	.49	.46
3.0	.70	.61	.54	.66	.58	.52	.60	.53	.48	.54	.49	.44	.49	.44	.41	.37
4.0	.61	.52	.45	.58	.50	.43	.53	.46	.40	.48	.42	.37	.43	.38	.34	.31
5.0	.54	.45	.38	.52	.43	.37	.47	.40	.34	.43	.36	.32	.38	.33	.29	.26
6.0	.49	.39	.33	.46	.38	.32	.42	.35	.29	.38	.32	.27	.35	.30	.25	.23
7.0	.44	.35	.28	.42	.34	.28	.38	.31	.26	.35	.29	.24	.32	.26	.22	.20
8.0	.40	.31	.25	.38	.30	.24	.35	.28	.23	.32	.26	.21	.29	.24	.20	.18
9.0	.36	.28	.22	.35	.27	.22	.32	.25	.20	.29	.23	.19	.27	.22	.18	.16
10.0	.33	.25	.20	.32	.25	.20	.29	.23	.18	.27	.21	.17	.25	.20	.16	.14



C Range: 0 - 360DEG  
 C Interval: 30.0DEG  
 Test Speed: HIGH  
 Temperature:25.3DEG  
 Operators:LPC  
 Test Date:2021-12-15

γ Range: 0 - 180DEG  
 γ Interval: 1.0DEG  
 Test System:EVERFINE GO-2000B\_V1 SYSTEM V2.0.362  
 Humidity:65.0%  
 Test Distance:9.200m [K=1.0000]  
 Remarks:

## WEC AND CCEC

Test:U:24.00V I:0.1903A P:4.567W PF:1.000 Freq:50.00Hz Lamp Flux:110.577x1 lm		
NAME: SF21-24V-5050-56-DMX4SM-RGBW(4000K)-W	TYPE: 硅胶	WEIGHT:
SPEC.:	DIM.: 28mm*11.5mm	SERIAL No.:2021121509
MFR.: OLYMPIA	SUR.:1*0.016	Shielding Angle:

pcc	80%			70%			50%			30%			10%			0	
pw	50%	30%	10%	50%	30%	10%	50%	30%	10%	50%	30%	10%	50%	30%	10%	0	
pfc	20%			20%			20%			20%			20%			0	
RCR	RCR:Room Cavity Ratio						Wall Exitance Coeffcients (WEC)										
0.0																	
1.0	.387	.220	.070	.373	.213	.068	.346	.199	.063	.322	.186	.060	.299	.173	.056		
2.0	.333	.183	.056	.320	.176	.054	.296	.165	.051	.274	.154	.048	.253	.143	.045		
3.0	.295	.157	.047	.284	.152	.046	.262	.142	.043	.241	.132	.041	.222	.123	.038		
4.0	.265	.138	.041	.255	.133	.039	.235	.125	.037	.216	.116	.035	.199	.108	.033		
5.0	.241	.123	.036	.231	.119	.035	.213	.111	.033	.196	.104	.031	.180	.096	.029		
6.0	.221	.111	.032	.212	.107	.031	.195	.100	.029	.180	.093	.027	.165	.087	.026		
7.0	.203	.101	.029	.195	.097	.028	.180	.091	.026	.166	.085	.025	.152	.079	.023		
8.0	.189	.092	.026	.181	.089	.025	.167	.084	.024	.154	.078	.023	.142	.073	.021		
9.0	.176	.085	.024	.169	.082	.023	.156	.077	.022	.144	.072	.021	.132	.067	.019		
10.0	.164	.079	.022	.158	.076	.021	.146	.072	.020	.135	.067	.019	.124	.062	.018		

pcc	80%			70%			50%			30%			10%			0
pw	50%	30%	10%	50%	30%	10%	50%	30%	10%	50%	30%	10%	50%	30%	10%	0
pfc	20%			20%			20%			20%			20%			0
RCR	RCR:Room Cavity Ratio						Ceiling Cavity Exitance Coefficients(CCEC)									
0.0	.366	.366	.366	.313	.313	.313	.214	.214	.214	.123	.123	.123	.039	.039	.039	
1.0	.363	.333	.305	.310	.286	.263	.212	.196	.182	.122	.114	.106	.039	.037	.034	
2.0	.356	.310	.271	.305	.267	.235	.209	.185	.164	.121	.107	.096	.039	.035	.031	
3.0	.349	.294	.250	.299	.253	.217	.205	.176	.152	.119	.103	.090	.038	.033	.029	
4.0	.341	.281	.236	.293	.243	.205	.201	.169	.144	.116	.099	.085	.037	.032	.028	
5.0	.333	.272	.226	.286	.235	.197	.197	.164	.139	.114	.096	.082	.037	.031	.027	
6.0	.326	.264	.219	.280	.229	.191	.193	.160	.135	.112	.094	.080	.036	.031	.027	
7.0	.319	.257	.214	.274	.223	.187	.190	.156	.132	.110	.092	.079	.036	.030	.026	
8.0	.312	.252	.210	.269	.219	.183	.186	.153	.130	.108	.090	.078	.035	.030	.026	
9.0	.306	.247	.207	.264	.215	.181	.183	.151	.128	.106	.089	.077	.034	.029	.025	
10.0	.300	.243	.205	.259	.211	.179	.180	.149	.127	.105	.088	.076	.034	.029	.025	

C Range: 0 - 360DEG  
 C Interval: 30.0DEG  
 Test Speed: HIGH  
 Temperature:25.3DEG  
 Operators:LPC  
 Test Date:2021-12-15

γ Range: 0 - 180DEG  
 γ Interval: 1.0DEG  
 Test System:EVERFINE GO-2000B\_V1 SYSTEM V2.0.362  
 Humidity:65.0%  
 Test Distance:9.200m [K=1.0000]  
 Remarks:

UGR(Unified Glare Rating) Table

Test:U:24.00V I:0.1903A P:4.567W PF:1.000 Freq:50.00Hz Lamp Flux:110.577x1 lm										
NAME: SF21-24V-5050-56-DMX4SM-RGBW(4000K)-W					TYPE: 硅胶			WEIGHT:		
SPEC.:					DIM.: 28mm*11.5mm			SERIAL No.:2021121509		
MFR.: OLYMPIA					SUR.:1*0.016			Shielding Angle:		
ceiling/cavity	0.7	0.7	0.5	0.5	0.3	0.7	0.7	0.5	0.5	0.3
walls	0.5	0.3	0.5	0.3	0.3	0.5	0.3	0.5	0.3	0.3
working plane	0.2	0.2	0.2	0.2	0.2	0.2	0.2	0.2	0.2	0.2
Room dimensions	Viewed crosswise					Viewed endwise				
x = 2H y = 2H	22.5	23.8	23.0	24.4	25.0	19.7	21.0	20.3	21.6	22.3
3H	25.3	26.5	25.9	27.1	27.8	21.2	22.4	21.8	23.0	23.7
4H	26.8	28.0	27.4	28.6	29.3	21.7	22.9	22.3	23.5	24.2
6H	28.6	29.6	29.2	30.3	31.0	22.1	23.1	22.7	23.8	24.5
8H	29.5	30.6	30.2	31.2	32.0	22.1	23.2	22.8	23.8	24.6
12H	30.6	31.6	31.3	32.3	33.1	22.2	23.2	22.8	23.8	24.6
4H 2H	23.1	24.2	23.7	24.8	25.6	21.2	22.3	21.8	22.9	23.7
3H	26.2	27.2	26.8	27.9	28.6	23.0	24.0	23.6	24.6	25.4
4H	28.0	28.9	28.6	29.6	30.4	23.8	24.7	24.5	25.4	26.2
6H	29.9	30.7	30.6	31.4	32.3	24.4	25.2	25.1	26.0	26.8
8H	31.0	31.7	31.7	32.5	33.3	24.6	25.4	25.3	26.1	27.0
12H	32.2	32.9	32.9	33.6	34.5	24.8	25.5	25.5	26.2	27.1
8H 4H	28.4	29.1	29.1	29.9	30.7	25.2	26.0	25.9	26.7	27.6
6H	30.7	31.3	31.4	32.1	33.0	26.3	27.0	27.1	27.7	28.6
8H	32.0	32.6	32.7	33.3	34.2	26.8	27.4	27.6	28.2	29.1
12H	33.5	34.0	34.2	34.8	35.7	27.2	27.7	28.0	28.5	29.5
12H 4H	28.4	29.1	29.1	29.8	30.7	25.7	26.4	26.4	27.1	28.0
6H	30.8	31.4	31.6	32.1	33.1	27.1	27.7	27.9	28.5	29.4
8H	32.2	32.8	33.0	33.5	34.5	27.8	28.3	28.6	29.1	30.0
Variations with the observer position at spacings:										
S = 1.0H	+ 0.1 / - 0.1					+ 0.1 / - 0.1				
1.5H	+ 0.2 / - 0.3					+ 0.2 / - 0.3				
2.0H	+ 0.3 / - 0.4					+ 0.3 / - 0.4				

CIE Pub.117, 110.6 lm Total Lamp Luminous Flux Correct (8log(F/F0) = -7.7)

C Range: 0 - 360DEG  
 C Interval: 30.0DEG  
 Test Speed: HIGH  
 Temperature:25.3DEG  
 Operators:LPC  
 Test Date:2021-12-15

γ Range: 0 - 180DEG  
 γ Interval: 1.0DEG  
 Test System:EVERFINE GO-2000B\_V1 SYSTEM V2.0.362  
 Humidity:65.0%  
 Test Distance:9.200m [K=1.0000]  
 Remarks:

## UTILIZATION FACTORS TABLE

Test:U:24.00V I:0.1903A P:4.567W PF:1.000 Freq:50.00Hz Lamp Flux:110.577x1 lm		
NAME: SF21-24V-5050-56-DMX4SM-RGBW(4000K)-W	TYPE: 硅胶	WEIGHT:
SPEC.:	DIM.: 28mm*11.5mm	SERIAL No.:2021121509
MFR.: OLYMPIA	SUR.:1*0.016	Shielding Angle:

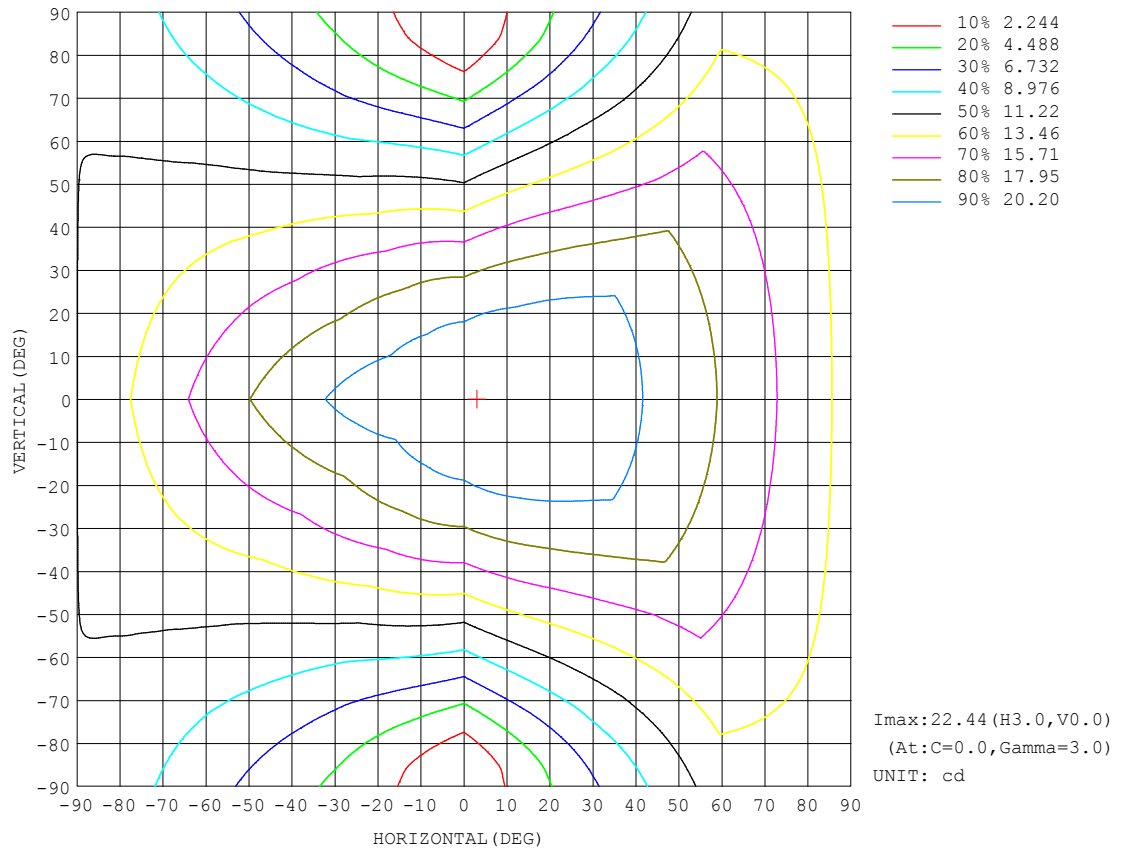
REFLECTANCE										
Ceiling	0.8	0.8	0.8	0.7	0.7	0.7	0.5	0.5	0.5	0
Walls	0.7	0.5	0.3	0.7	0.5	0.3	0.7	0.5	0.3	0
Working plane	0.2	0.2	0.2	0.2	0.2	0.2	0.2	0.2	0.2	0
ROOM INDEX	UTILIZATION FACTORS (PERCENT) $k(RI) \times RCR = 5$									
$k = 0.60$	46	34	27	45	33	26	43	32	26	19
0.80	55	42	34	53	41	34	50	40	33	24
1.00	63	50	41	61	49	41	57	49	39	30
1.25	70	57	48	67	55	47	62	52	45	35
1.50	75	62	54	72	61	52	66	57	50	39
2.00	82	71	62	79	68	61	72	64	57	45
2.50	87	76	68	83	73	66	76	68	62	48
3.00	90	81	73	86	78	71	79	72	66	52
4.00	95	87	80	91	84	77	83	77	72	56
5.00	98	91	85	94	87	82	85	80	76	59
ROOM INDEX	UF (total)									Direct
According to DIN EN 13032-2 2004			Suspended					SHRNM = 1.25		

C Range: 0 - 360DEG  
C Interval: 30.0DEG  
Test Speed: HIGH  
Temperature:25.3DEG  
Operators:LPC  
Test Date:2021-12-15

$\gamma$  Range: 0 - 180DEG  
 $\gamma$  Interval: 1.0DEG  
Test System:EVERFINE GO-2000B\_V1 SYSTEM V2.0.362  
Humidity:65.0%  
Test Distance:9.200m [K=1.0000]  
Remarks:

## ISOCANDELA DIAGRAM

Test:U:24.00V I:0.1903A P:4.567W PF:1.000 Freq:50.00Hz Lamp Flux:110.577x1 lm		
NAME: SF21-24V-5050-56-DMX4SM-RGBW(4000K)-W	TYPE: 硅胶	WEIGHT:
SPEC.:	DIM.: 28mm*11.5mm	SERIAL No.:2021121509
MFR.: OLYMPIA	SUR.:1*0.016	Shielding Angle:



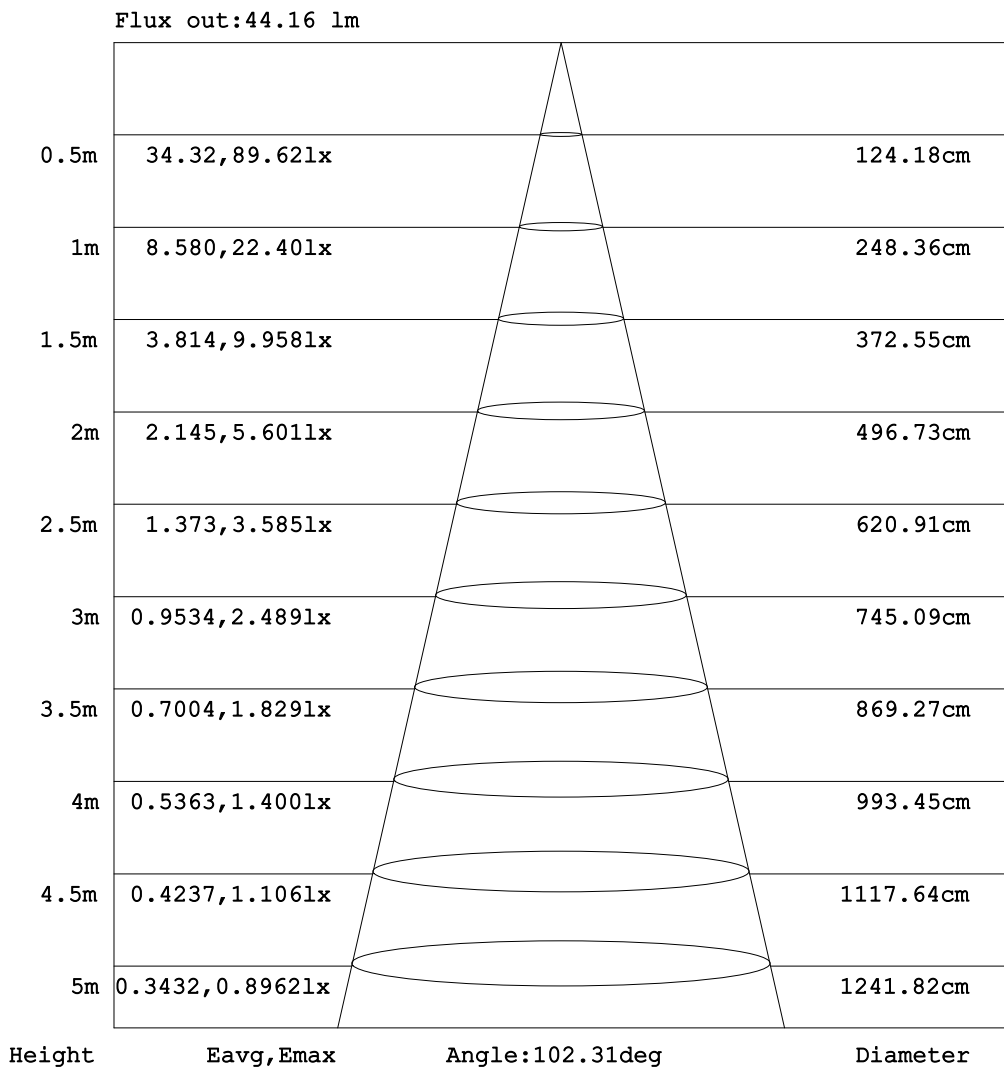
C Range: 0 - 360DEG  
C Interval: 30.0DEG  
Test Speed: HIGH  
Temperature:25.3DEG  
Operators:LPC  
Test Date:2021-12-15

$\gamma$  Range: 0 - 180DEG  
 $\gamma$  Interval: 1.0DEG  
Test System:EVERFINE GO-2000B\_V1 SYSTEM V2.0.362  
Humidity:65.0%  
Test Distance:9.200m [K=1.0000]  
Remarks:



### AAI Figure

Test:U:24.00V I:0.1903A P:4.567W PF:1.000 Freq:50.00Hz Lamp Flux:110.577x1 lm		
NAME: SF21-24V-5050-56-DMX4SM-RGBW(4000K)-W	TYPE: 硅胶	WEIGHT:
SPEC.:	DIM.: 28mm*11.5mm	SERIAL No.:2021121509
MFR.: OLYMPIA	SUR.:1*0.016	Shielding Angle:



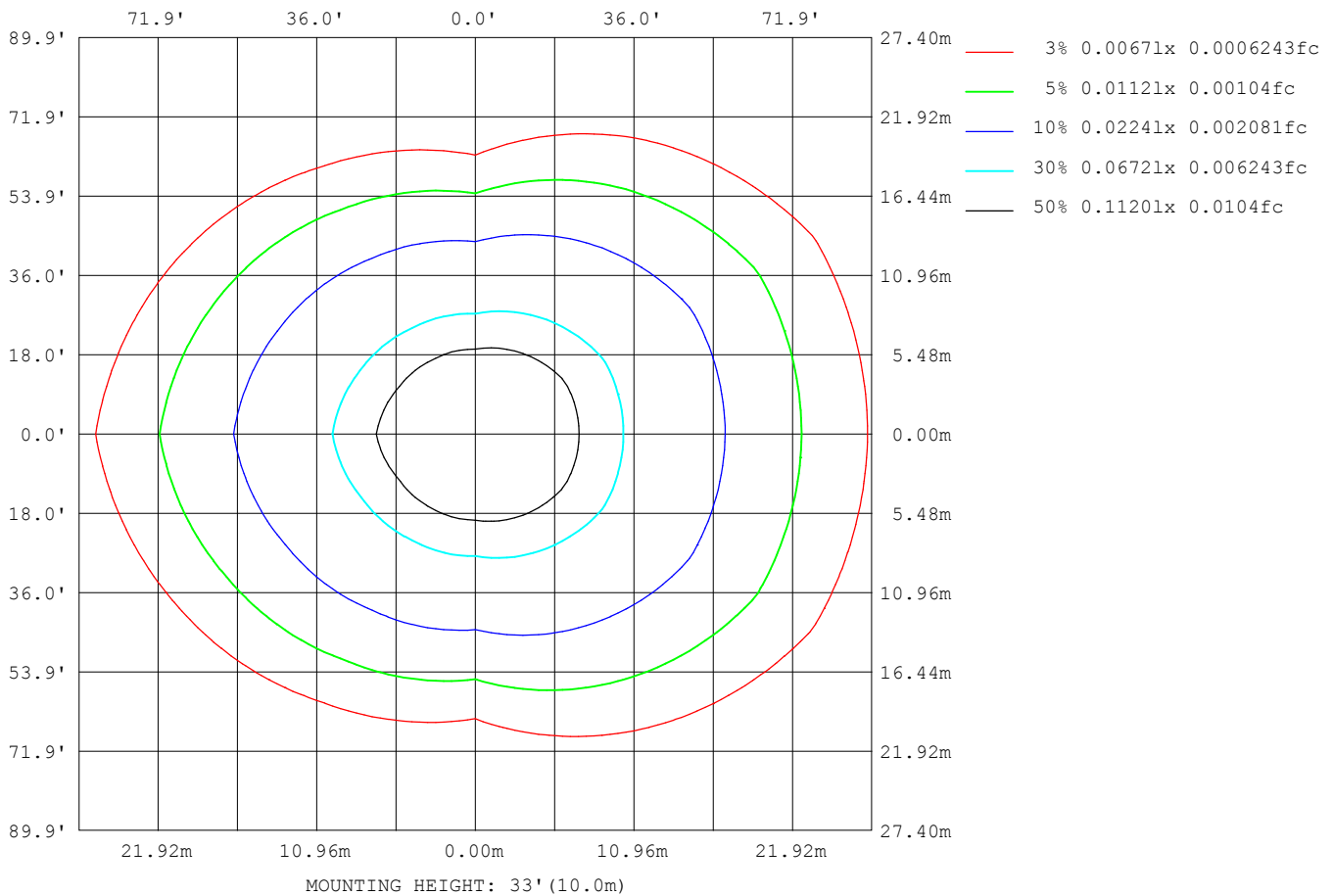
Note:The Curves indicate the illuminated area and the average illumination when the luminaire is at different distance.

C Range: 0 - 360DEG  
C Interval: 30.0DEG  
Test Speed: HIGH  
Temperature:25.3DEG  
Operators:LPC  
Test Date:2021-12-15

γ Range: 0 - 180DEG  
γ Interval: 1.0DEG  
Test System:EVERFINE GO-2000B\_V1 SYSTEM V2.0.362  
Humidity:65.0%  
Test Distance:9.200m [K=1.0000]  
Remarks:

## ISOLUX DIAGRAM

Test:U:24.00V I:0.1903A P:4.567W PF:1.000 Freq:50.00Hz Lamp Flux:110.577x1 lm		
NAME: SF21-24V-5050-56-DMX4SM-RGBW(4000K)-W	TYPE: 硅胶	WEIGHT:
SPEC.:	DIM.: 28mm*11.5mm	SERIAL No.:2021121509
MFR.: OLYMPIA	SUR.:1*0.016	Shielding Angle:



C Range: 0 - 360DEG  
C Interval: 30.0DEG  
Test Speed: HIGH  
Temperature:25.3DEG  
Operators:LPC  
Test Date:2021-12-15

$\gamma$  Range: 0 - 180DEG  
 $\gamma$  Interval: 1.0DEG  
Test System:EVERFINE GO-2000B\_V1 SYSTEM V2.0.362  
Humidity:65.0%  
Test Distance:9.200m [K=1.0000]  
Remarks:

## LED Avg.L Report

Test:U:24.00V I:0.1903A P:4.567W PF:1.000 Freq:50.00Hz Lamp Flux:110.577x1 lm		
NAME: SF21-24V-5050-56-DMX4SM-RGBW(4000K)-W	TYPE:硅胶	WEIGHT:
SPEC.:	DIM.: 28mm*11.5mm	SERIAL No.:2021121509
MFR.: OLYMPIA	SUR.:1*0.016	Shielding Angle:

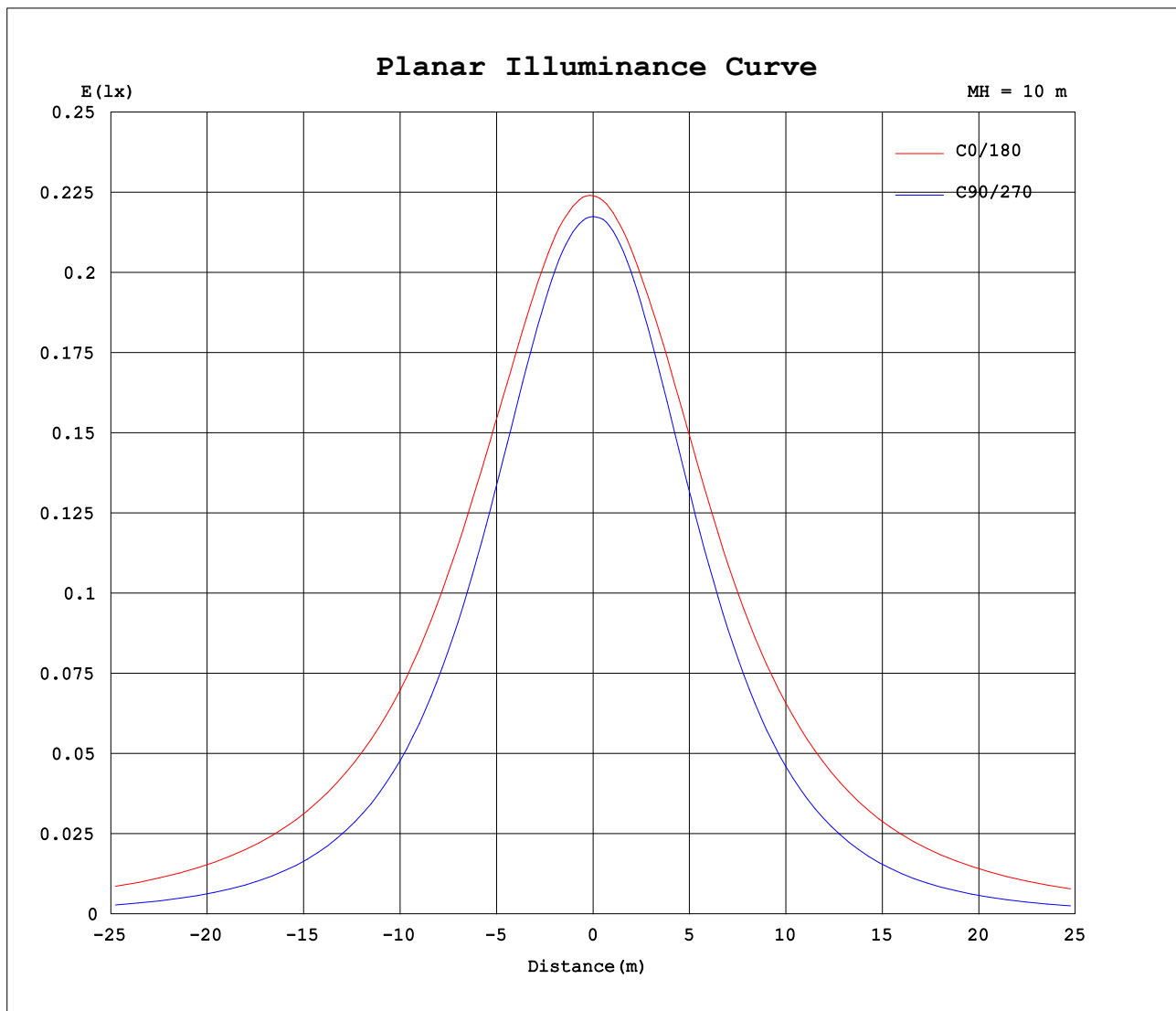
AvgL	cd/m2
L_0~180(65)av	2406
L_0~180(75)av	3531
L_0~180(85)av	9221
L_90~270(65)av	928
L_90~270(75)av	679
L_90~270(85)av	249
L_45(65)av	1838
L_45(75)av	2521
L_45(85)av	6196

Standard: GB/T 29293-2012

C Range: 0 - 360DEG  
C Interval: 30.0DEG  
Test Speed: HIGH  
Temperature:25.3DEG  
Operators:LPC  
Test Date:2021-12-15

γ Range: 0 - 180DEG  
γ Interval: 1.0DEG  
Test System:EVERFINE GO-2000B\_V1 SYSTEM V2.0.362  
Humidity:65.0%  
Test Distance:9.200m [K=1.0000]  
Remarks:

## Planar Illuminance Curve



C Range: 0 - 360DEG  
C Interval: 30.0DEG  
Test Speed: HIGH  
Temperature: 25.3DEG  
Operators: LPC  
Test Date: 2021-12-15

$\gamma$  Range: 0 - 180DEG  
 $\gamma$  Interval: 1.0DEG  
Test System: EVERFINE GO-2000B\_V1 SYSTEM V2.0.362  
Humidity: 65.0%  
Test Distance: 9.200m [K=1.0000]  
Remarks:

## LUMINOUS DISTRIBUTION INTENSITY DATA

Test:U:24.00V I:0.1903A P:4.567W PF:1.000 Freq:50.00Hz Lamp Flux:110.577x1 lm		
NAME: SF21-24V-5050-56-DMX4SM-RGBW(4000K)-W	TYPE:硅胶	WEIGHT:
SPEC.:	DIM.: 28mm*11.5mm	SERIAL No.:2021121509
MFR.: OLYMPIA	SUR.:1*0.016	Shielding Angle:

Table--1

UNIT: cd

C (DEG) γ (DEG)	0	30	60	90	120	150	180	210	240	270	300	330						
0	22.4	22.0	21.8	21.7	21.8	21.8	22.4	22.0	21.8	21.7	21.8	21.8						
5	22.4	22.2	21.9	21.7	21.6	21.5	22.3	21.7	21.6	21.7	21.8	22.0						
10	22.4	22.2	21.8	21.4	21.2	21.1	22.0	21.3	21.2	21.3	21.7	22.2						
15	22.2	22.2	21.5	20.8	20.6	20.6	21.7	20.8	20.6	20.7	21.4	22.2						
20	21.9	22.1	21.0	20.0	19.8	20.0	21.4	20.2	19.7	19.8	20.8	22.0						
25	21.7	21.8	20.4	19.0	18.9	19.2	21.0	19.4	18.8	18.8	20.1	21.8						
30	21.3	21.4	19.6	17.9	17.8	18.4	20.5	18.6	17.7	17.5	19.3	21.4						
35	20.9	20.8	18.6	16.6	16.7	17.6	19.8	17.8	16.5	16.2	18.4	20.9						
40	20.4	20.3	17.6	15.1	15.4	16.7	19.2	16.9	15.3	14.6	17.5	20.4						
45	19.7	19.7	16.5	13.5	14.2	15.7	18.6	16.0	14.0	13.0	16.4	19.8						
50	19.2	19.1	15.3	11.9	12.8	14.8	17.9	15.0	12.7	11.3	15.2	19.2						
55	18.5	18.3	14.1	10.1	11.5	13.8	17.2	14.0	11.4	9.57	14.0	18.5						
60	17.8	17.5	12.9	8.35	10.1	12.9	16.4	13.1	10.0	7.78	12.8	17.7						
65	17.0	16.7	11.7	6.56	8.79	11.9	15.6	12.1	8.72	5.99	11.6	16.9						
70	16.2	15.9	10.4	4.76	7.59	11.0	14.7	11.2	7.49	4.23	10.4	16.1						
75	15.3	15.0	9.23	3.04	6.52	10.1	13.9	10.3	6.40	2.58	9.15	15.3						
80	14.5	14.1	8.16	1.51	5.56	9.17	13.0	9.38	5.45	1.18	8.10	14.4						
85	13.6	13.3	7.19	0.43	4.73	8.30	12.1	8.50	4.61	0.26	7.12	13.6						
90	12.6	12.4	6.44	0.32	4.08	7.52	11.2	7.70	3.95	0.18	6.37	12.7						
95	11.6	11.6	5.87	0.31	3.62	6.83	10.3	6.98	3.49	0.19	5.78	11.9						
100	10.4	9.85	5.33	0.34	3.27	5.76	9.22	5.92	3.13	0.20	5.31	10.2						
105	9.48	9.34	4.47	0.43	2.39	5.45	8.43	5.56	2.37	0.29	4.55	9.72						
110	8.61	8.63	4.20	0.49	2.24	4.96	7.71	5.03	2.16	0.40	4.37	9.04						
115	7.84	7.94	4.05	0.59	2.01	4.29	6.76	4.59	1.92	0.51	3.87	8.33						
120	7.17	7.32	3.82	0.70	1.79	3.84	6.20	4.08	1.72	0.61	3.73	7.68						
125	6.58	6.77	3.32	0.79	1.62	3.45	5.67	3.59	1.55	0.70	3.41	7.08						
130	6.01	6.15	2.54	0.89	1.50	3.04	5.16	3.18	1.42	0.76	3.23	6.43						
135	5.45	5.13	2.37	0.97	1.32	2.55	4.52	2.63	1.27	0.84	2.94	5.25						
140	4.79	4.17	2.41	1.05	1.09	2.16	3.75	2.27	1.07	0.91	2.55	4.57						
145	4.03	3.24	2.26	1.11	0.85	1.88	3.40	2.00	0.84	0.98	2.30	3.71						
150	3.54	2.55	2.04	1.26	0.72	1.53	2.99	1.67	0.67	1.15	2.08	3.30						
155	3.20	2.43	2.03	1.42	0.95	1.16	2.51	1.32	0.90	1.31	2.07	2.75						
160	2.74	2.07	2.09	1.57	0.59	0.75	2.04	0.95	0.78	1.48	2.13	2.34						
165	2.28	1.82	2.13	1.70	0.52	1.05	1.75	0.79	0.70	1.60	2.14	1.95						
170	1.19	1.76	2.09	1.81	0.52	0.93	0.88	0.53	0.63	1.73	2.06	1.97						
175	0.92	1.65	2.02	1.85	0.50	0.63	0.66	0.53	0.55	1.82	1.97	1.96						
180	0.52	1.19	1.89	1.89	1.80	1.70	0.52	1.44	1.80	1.89	1.83	1.73						

C Range: 0 - 360DEG  
C Interval: 30.0DEG  
Test Speed: HIGH  
Temperature:25.3DEG  
Operators:LPC  
Test Date:2021-12-15

γ Range: 0 - 180DEG  
γ Interval: 1.0DEG  
Test System:EVERFINE GO-2000B\_V1 SYSTEM V2.0.362  
Humidity:65.0%  
Test Distance:9.200m [K=1.0000]  
Remarks:

## Photometric Data Table [cd]

G/C	0.0	30.0	60.0	90.0	120.0	150.0	180.0	210.0	240.0	270.0
0.0	22.40	21.97	21.79	21.75	21.82	21.80	22.40	21.97	21.79	21.75
3.0	22.44	22.12	21.86	21.71	21.71	21.66	22.33	21.78	21.68	21.75
6.0	22.42	22.22	21.90	21.61	21.54	21.46	22.22	21.61	21.51	21.64
9.0	22.40	22.23	21.86	21.44	21.32	21.23	22.08	21.39	21.27	21.43
12.0	22.32	22.24	21.77	21.14	21.00	20.96	21.90	21.12	20.96	21.09
15.0	22.19	22.23	21.55	20.77	20.61	20.62	21.71	20.80	20.55	20.68
18.0	22.05	22.16	21.27	20.32	20.16	20.25	21.53	20.44	20.08	20.20
21.0	21.87	22.05	20.92	19.80	19.64	19.83	21.34	20.01	19.57	19.63
24.0	21.71	21.85	20.51	19.23	19.08	19.35	21.09	19.55	18.98	19.00
27.0	21.55	21.62	20.05	18.57	18.48	18.86	20.81	19.06	18.36	18.30
30.0	21.34	21.36	19.56	17.86	17.83	18.40	20.48	18.56	17.70	17.53
33.0	21.10	21.05	19.01	17.09	17.13	17.92	20.11	18.09	17.01	16.72
36.0	20.82	20.73	18.44	16.27	16.41	17.40	19.70	17.62	16.30	15.86
39.0	20.50	20.40	17.83	15.40	15.66	16.90	19.33	17.08	15.55	14.94
42.0	20.14	20.08	17.18	14.48	14.89	16.35	18.98	16.55	14.78	14.00
45.0	19.75	19.72	16.52	13.53	14.15	15.75	18.60	15.99	14.02	13.02
48.0	19.41	19.35	15.81	12.55	13.37	15.18	18.20	15.40	13.25	12.00
51.0	19.06	18.93	15.09	11.53	12.56	14.59	17.77	14.82	12.46	10.98
54.0	18.67	18.47	14.36	10.48	11.76	14.02	17.31	14.25	11.66	9.939
57.0	18.24	18.00	13.62	9.425	10.93	13.44	16.85	13.66	10.86	8.868
60.0	17.78	17.48	12.89	8.350	10.11	12.86	16.38	13.07	10.03	7.778
63.0	17.30	16.98	12.15	7.259	9.311	12.30	15.89	12.51	9.229	6.713
66.0	16.82	16.55	11.42	6.199	8.547	11.76	15.39	11.95	8.466	5.637
69.0	16.34	16.05	10.66	5.108	7.818	11.20	14.90	11.39	7.727	4.556
72.0	15.84	15.54	9.924	4.052	7.139	10.65	14.40	10.86	7.028	3.566
75.0	15.35	15.01	9.230	3.043	6.521	10.09	13.90	10.31	6.401	2.581
78.0	14.83	14.48	8.581	2.063	5.933	9.522	13.39	9.746	5.808	1.686
81.0	14.32	13.96	7.948	1.239	5.379	8.990	12.87	9.209	5.265	0.9367
84.0	13.76	13.45	7.365	0.6114	4.877	8.477	12.33	8.676	4.758	0.3335
87.0	13.20	12.94	6.857	0.3237	4.444	7.975	11.77	8.163	4.316	0.2063
90.0	12.62	12.43	6.440	0.3151	4.082	7.517	11.21	7.696	3.949	0.1844
93.0	12.00	11.94	6.077	0.3066	3.780	7.095	10.65	7.253	3.648	0.1894
96.0	11.42	11.47	5.766	0.3116	3.539	6.708	10.11	6.836	3.411	0.1943
99.0	10.81	10.38	5.439	0.3268	3.338	6.338	9.456	6.589	3.191	0.1993
102.0	10.03	9.679	5.098	0.3923	2.998	5.648	8.904	5.790	2.937	0.2411
105.0	9.480	9.337	4.469	0.4323	2.394	5.447	8.431	5.559	2.367	0.2914
108.0	8.953	8.909	4.403	0.4625	2.277	5.191	7.989	5.318	2.281	0.3567
111.0	8.450	8.492	4.167	0.5128	2.197	4.718	7.577	4.931	2.110	0.4369
114.0	7.983	8.070	4.015	0.5731	2.036	4.392	6.879	4.700	1.955	0.5124
117.0	7.566	7.688	3.976	0.6334	1.915	4.085	6.537	4.378	1.844	0.5577
120.0	7.168	7.322	3.820	0.6987	1.790	3.844	6.196	4.082	1.724	0.6130
123.0	6.801	6.980	3.573	0.7541	1.694	3.608	5.879	3.785	1.573	0.6732
126.0	6.464	6.663	3.158	0.8193	1.608	3.371	5.577	3.499	1.522	0.7086
129.0	6.123	6.376	2.660	0.8746	1.548	3.120	5.261	3.252	1.432	0.7588
132.0	5.786	5.723	2.383	0.9199	1.433	2.869	4.954	2.981	1.357	0.7990
135.0	5.449	5.129	2.372	0.9651	1.317	2.552	4.519	2.634	1.271	0.8393
138.0	5.092	4.482	2.412	1.020	1.192	2.326	4.064	2.433	1.155	0.8744
141.0	4.636	3.994	2.378	1.056	1.041	2.115	3.627	2.212	1.015	0.9246
144.0	4.163	3.431	2.292	1.091	0.9000	1.949	3.407	2.061	0.8741	0.9548
147.0	3.771	2.909	2.177	1.131	0.7694	1.713	3.221	1.880	0.7585	1.015
150.0	3.544	2.553	2.036	1.257	0.7236	1.527	2.989	1.674	0.6737	1.146
153.0	3.363	2.477	2.014	1.357	0.8641	1.331	2.753	1.483	0.8198	1.236
156.0	3.077	2.366	2.033	1.453	0.9946	1.080	2.406	1.242	0.9400	1.337
159.0	2.815	2.150	2.065	1.538	0.7921	0.8286	2.155	1.011	0.7964	1.442
162.0	2.584	1.919	2.111	1.619	0.5269	0.8351	1.879	0.7900	0.7501	1.528
165.0	2.283	1.816	2.126	1.699	0.5230	1.051	1.753	0.7934	0.7039	1.603
168.0	1.258	1.781	2.106	1.779	0.5188	1.056	0.9844	0.7205	0.6576	1.653
171.0	1.126	1.747	2.076	1.835	0.5131	0.8712	0.8338	0.5320	0.6113	1.734
174.0	0.9656	1.713	2.051	1.845	0.5052	0.6869	0.6931	0.5299	0.5650	1.799
177.0	0.8398	1.643	1.945	1.875	0.4976	0.5026	0.5674	0.5277	0.5187	1.829
180.0	0.5227	1.186	1.890	1.895	1.799	1.704	0.5177	1.442	1.799	1.895
G/C	300.0	330.0								
0.0	21.82	21.80								
3.0	21.84	21.96								
6.0	21.83	22.08								
9.0	21.77	22.16								
12.0	21.61	22.19								
15.0	21.38	22.17								
18.0	21.07	22.12								
21.0	20.68	22.00								
24.0	20.25	21.85								
27.0	19.78	21.67								
30.0	19.30	21.42								

C Range: 0 - 360DEG  
 C Interval: 30.0DEG  
 Test Speed: HIGH  
 Temperature: 25.3DEG  
 Operators: LPC  
 Test Date: 2021-12-15

γ Range: 0 - 180DEG  
 γ Interval: 1.0DEG  
 Test System: EVERFINE GO-2000B\_V1 SYSTEM V2.0.362  
 Humidity: 65.0%  
 Test Distance: 9.200m [K=1.0000]  
 Remarks:

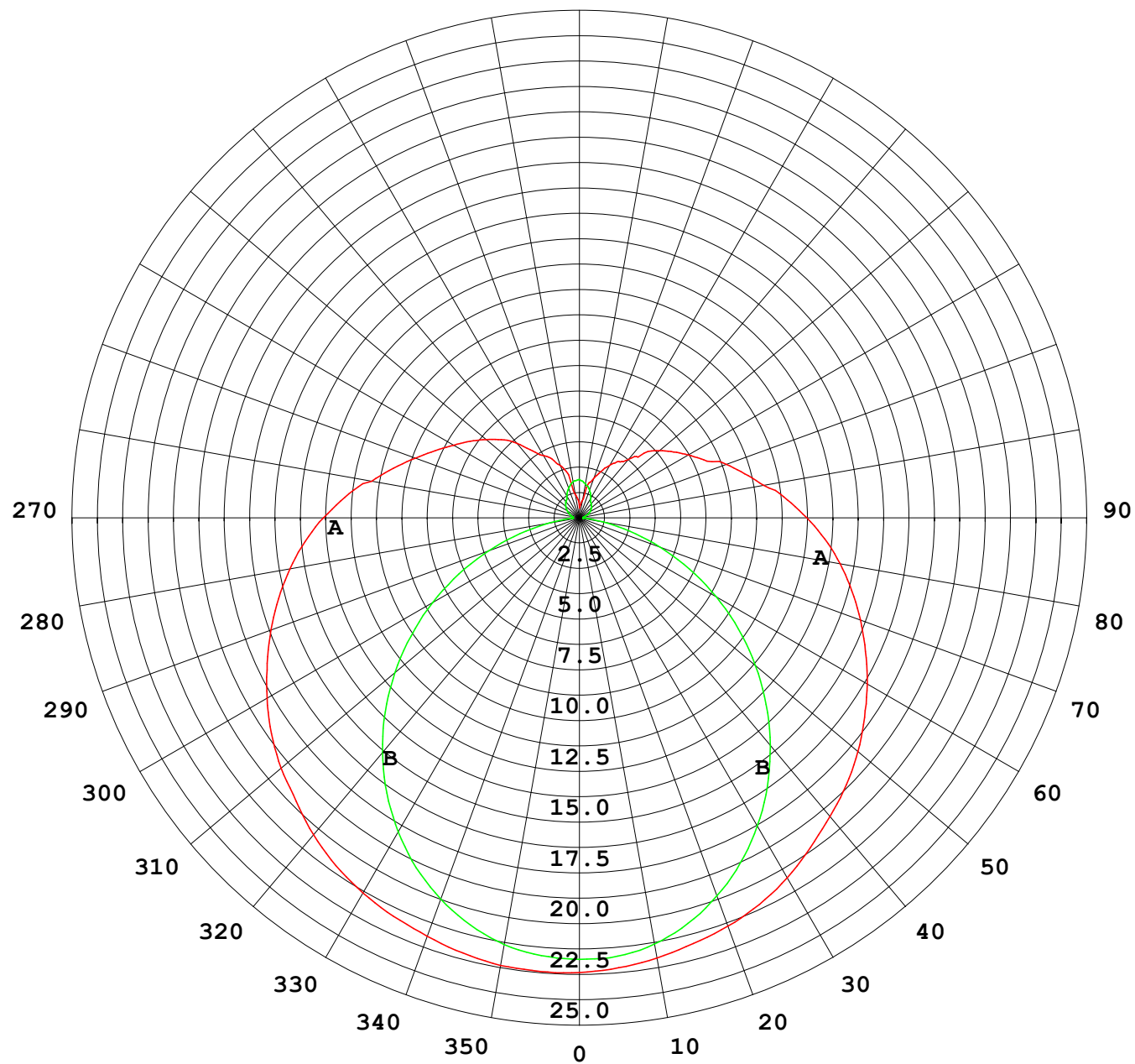
## Photometric Data Table [cd]

33.0	18.78	21.14
36.0	18.25	20.83
39.0	17.68	20.49
42.0	17.08	20.16
45.0	16.43	19.83
48.0	15.73	19.47
51.0	15.00	19.07
54.0	14.28	18.65
57.0	13.54	18.18
60.0	12.81	17.68
63.0	12.07	17.18
66.0	11.35	16.74
69.0	10.61	16.27
72.0	9.863	15.79
75.0	9.155	15.28
78.0	8.526	14.76
81.0	7.903	14.25
84.0	7.305	13.74
87.0	6.793	13.22
90.0	6.366	12.73
93.0	5.999	12.24
96.0	5.688	11.77
99.0	5.397	10.68
102.0	5.119	10.09
105.0	4.547	9.721
108.0	4.442	9.324
111.0	4.252	8.892
114.0	4.223	8.459
117.0	3.920	8.063
120.0	3.733	7.675
123.0	3.476	7.313
126.0	3.376	6.977
129.0	3.276	6.640
132.0	3.110	6.077
135.0	2.939	5.249
138.0	2.698	4.791
141.0	2.492	4.364
144.0	2.342	3.759
147.0	2.216	3.629
150.0	2.080	3.298
153.0	2.035	3.006
156.0	2.086	2.659
159.0	2.133	2.438
162.0	2.138	2.137
165.0	2.143	1.950
168.0	2.126	1.935
171.0	2.055	1.965
174.0	1.990	1.970
177.0	1.909	1.910
180.0	1.834	1.729

C Range: 0 - 360DEG  
C Interval: 30.0DEG  
Test Speed: HIGH  
Temperature:25.3DEG  
Operators:LPC  
Test Date:2021-12-15

γ Range: 0 - 180DEG  
γ Interval: 1.0DEG  
Test System:EVERFINE GO-2000B\_V1 SYSTEM V2.0.362  
Humidity:65.0%  
Test Distance:9.200m [K=1.0000]  
Remarks:

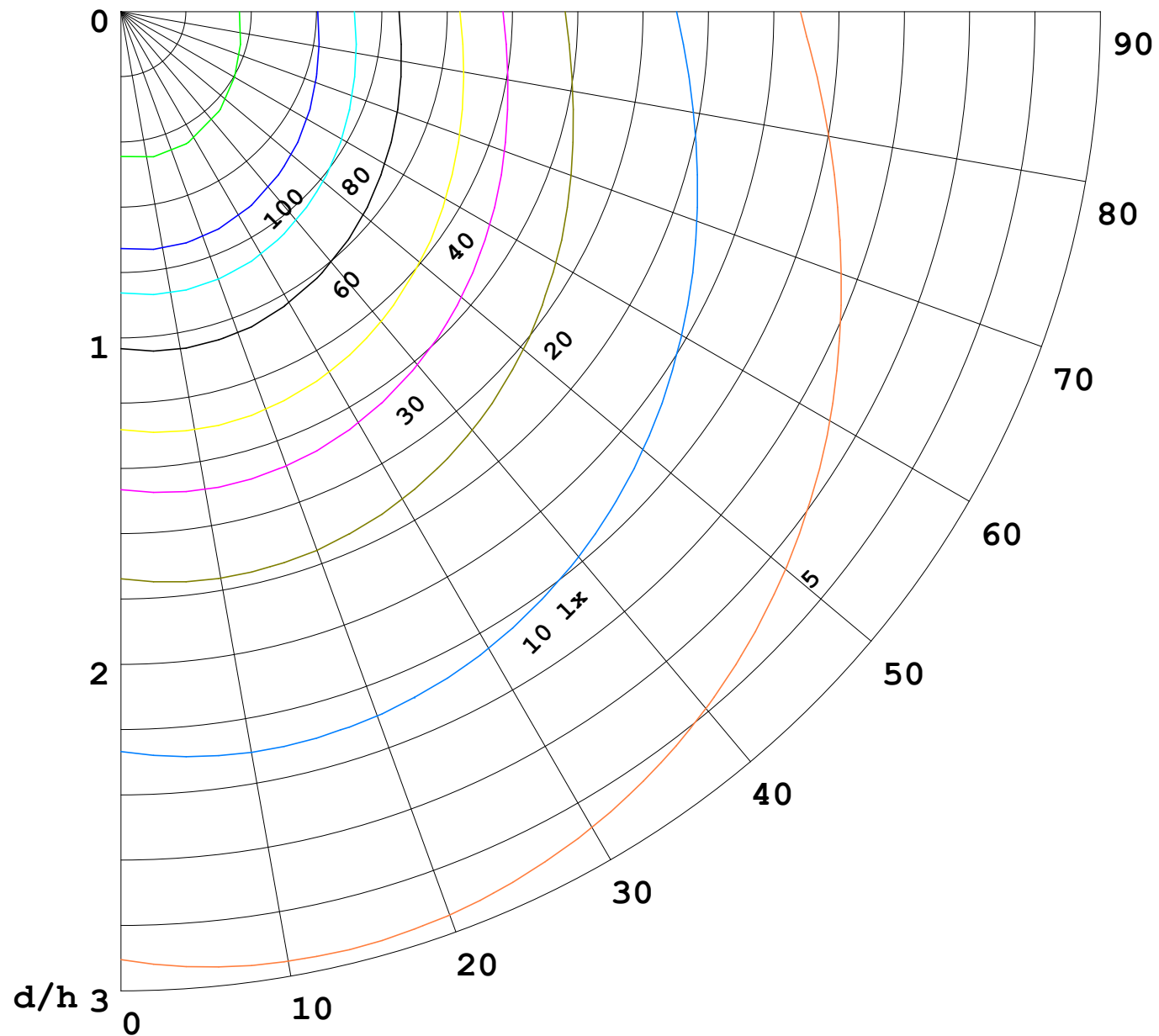
I (cd)





1000 lm

$\kappa = 1$



F = 5000 lm  
 K = 0.7  
 Hcc = 0.0 m  
 Hfc = 0.0 m  
 Eave = 100 lx

	Pcc	Pw	Pfc
—	70	50	30
—	50	30	20

