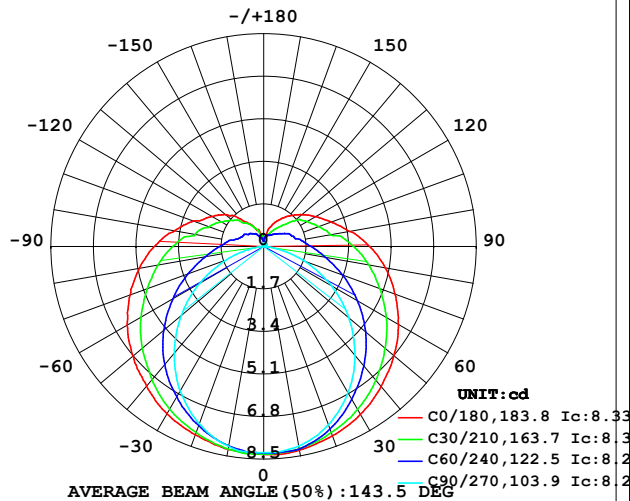


LUMINAIRE PHOTOMETRIC TEST REPORT

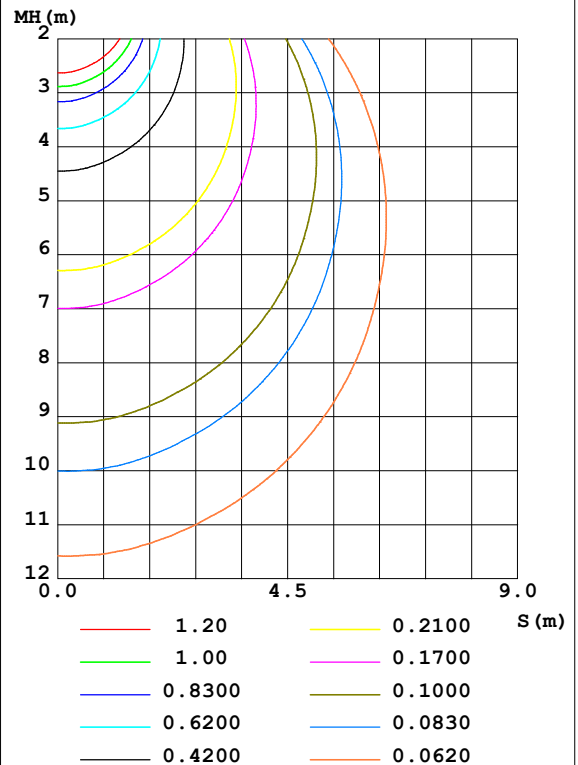
Test:U:24.00V I:0.2353A P:5.647W PF:1.000 Freq:50.00Hz Lamp Flux:40.3243x1 lm		
NAME: SF21-24V-5050-70-SPI3-RGB-R	TYPE: 硅胶	WEIGHT:
SPEC.:	DIM.: 28mm*11.5mm	SERIAL No.:2021121311
MFR.: OLYMPIA	SUR.:1*0.016	Shielding Angle:

DATA OF LAMP		PHOTOMETRIC DATA				Eff: 7.14 lm/W
MODEL	5050	I _{max} (cd)	8.333	S/MH(C0/180)	1.40	
NOMINAL POWER(W)	5	LOR(%)	100.0	S/MH(C90/270)	1.21	
RATED VOLTAGE(V)	24	TOTAL FLUX(lm)	40.324	η UP,DN(C0-180)	10.9,39.1	
NOMINAL FLUX(lm)	40.3243	CIE CLASS	SEMI-D.	η UP,DN(C180-360)	10.9,39.1	
LAMPS INSIDE	1	η up(%)	21.8	CIBSE SHR NOM	1.50	
TEST VOLTAGE(V)	24	η down(%)	78.2	CIBSE SHR MAX	1.55	

LUMINOUS INTENSITY DISTRIBUTION DIAGRAM



C0 PLANE ISOLUX DIAGRAM (UNIT:lx)



C Range: 0 - 360DEG
 C Interval: 30.0DEG
 Test Speed: HIGH
 Temperature: 25.3DEG
 Operators: LPC
 Test Date: 2021-12-13

γ Range: 0 - 180DEG
 γ Interval: 1.0DEG
 Test System: EVERFINE GO-2000B_V1 SYSTEM V2.0.362
 Humidity: 65.0%
 Test Distance: 9.200m [K=1.0000]
 Remarks:

ZONAL FLUX DIAGRAM

ZONAL FLUX DIAGRAM:

γ	C0	C45	C90	C135	C180	C225	C270	C315	γ	Φ zone	Φ total	%lum, lamp
10	8.263	8.210	8.096	8.112	8.237	8.157	8.112	8.168	0- 10	0.7849	0.7849	1.95,1.95
20	8.052	7.838	7.578	7.740	8.001	7.765	7.539	7.790	10- 20	2.261	3.046	7.55,7.55
30	7.745	7.280	6.744	7.210	7.724	7.232	6.680	7.239	20- 30	3.475	6.521	16.2,16.2
40	7.298	6.602	5.678	6.516	7.282	6.551	5.560	6.601	30- 40	4.323	10.84	26.9,26.9
50	6.795	5.828	4.442	5.740	6.824	5.777	4.293	5.855	40- 50	4.744	15.59	38.7,38.7
60	6.217	4.991	3.115	4.885	6.306	4.925	2.951	5.033	50- 60	4.745	20.33	50.4,50.4
70	5.589	4.149	1.743	4.054	5.678	4.093	1.599	4.201	60- 70	4.370	24.70	61.3,61.3
80	4.936	3.385	0.5170	3.300	5.045	3.327	0.4280	3.435	70- 80	3.752	28.46	70.6,70.6
90	4.232	2.744	0.0955	2.676	4.377	2.699	0.0403	2.809	80- 90	3.087	31.54	78.2,78.2
100	3.484	2.113	0.1046	2.086	3.613	2.093	0.0402	2.151	90-100	2.512	34.05	84.5,84.5
110	2.870	1.784	0.1190	1.646	2.999	1.671	0.0503	1.827	100-110	1.934	35.99	89.2,89.2
120	2.403	1.513	0.1238	1.387	2.407	1.452	0.0503	1.523	110-120	1.511	37.50	93,93
130	1.986	1.209	0.1378	1.166	1.985	1.197	0.0503	1.216	120-130	1.148	38.65	95.8,95.8
140	1.594	0.8542	0.1457	0.9423	1.436	0.9524	0.0603	0.8419	130-140	0.7825	39.43	97.8,97.8
150	1.232	0.6306	0.1457	0.7413	0.9948	0.7737	0.1121	0.6232	140-150	0.4813	39.91	99,99
160	0.8548	0.4849	0.1457	0.5276	0.6988	0.5477	0.1202	0.4764	150-160	0.2680	40.18	99.6,99.6
170	0.3720	0.3818	0.1457	0.3492	0.3366	0.3521	0.1244	0.4031	160-170	0.1182	40.30	99.9,99.9
180	0.1658	0.1608	0.1457	0.1608	0.1709	0.1684	0.1357	0.1533	170-180	0.0271	40.32	100,100
DEG	LUMINOUS INTENSITY:cd									UNIT:lm		

Conical surface Flux(90deg): 13.189 lm

%lum = 32.7%

%lamp = 32.7%

Conical surface Flux(120deg): 20.333 lm

%lum = 50.4%

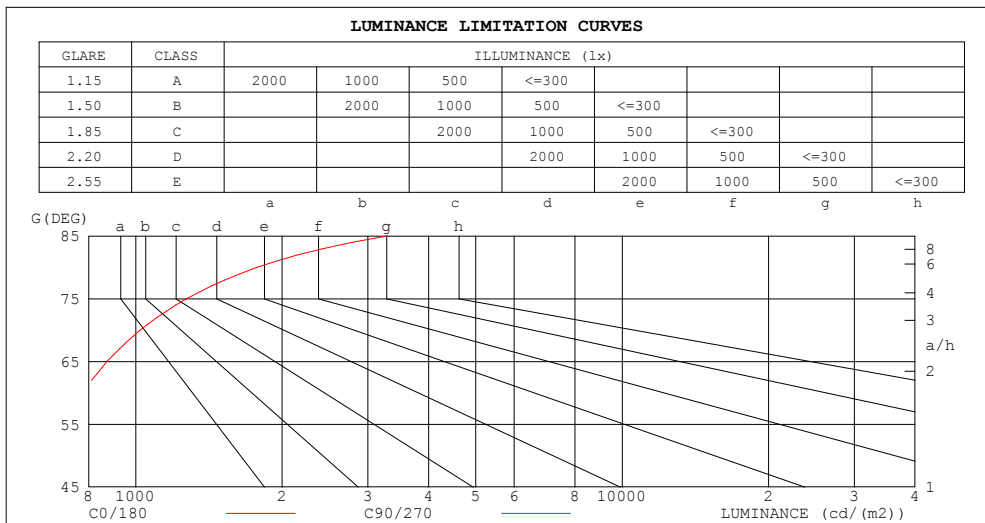
%lamp = 50.4%

C Range: 0 - 360DEG
 C Interval: 30.0DEG
 Test Speed: HIGH
 Temperature:25.3DEG
 Operators:LPC
 Test Date:2021-12-13

γ Range: 0 - 180DEG
 γ Interval: 1.0DEG
 Test System:EVERFINE GO-2000B_V1 SYSTEM V2.0.362
 Humidity:65.0%
 Test Distance:9.200m [K=1.0000]
 Remarks:

LUMINANCE LIMITATION CURVES

Test:U:24.00V I:0.2353A P:5.647W PF:1.000 Freq:50.00Hz Lamp Flux:40.3243x1 lm		
NAME: SF21-24V-5050-70-SPI3-RGB-R	TYPE: 硅胶	WEIGHT:
SPEC.:	DIM.: 28mm*11.5mm	SERIAL No.:2021121311
MFR.: OLYMPIA	SUR.:1*0.016	Shielding Angle:



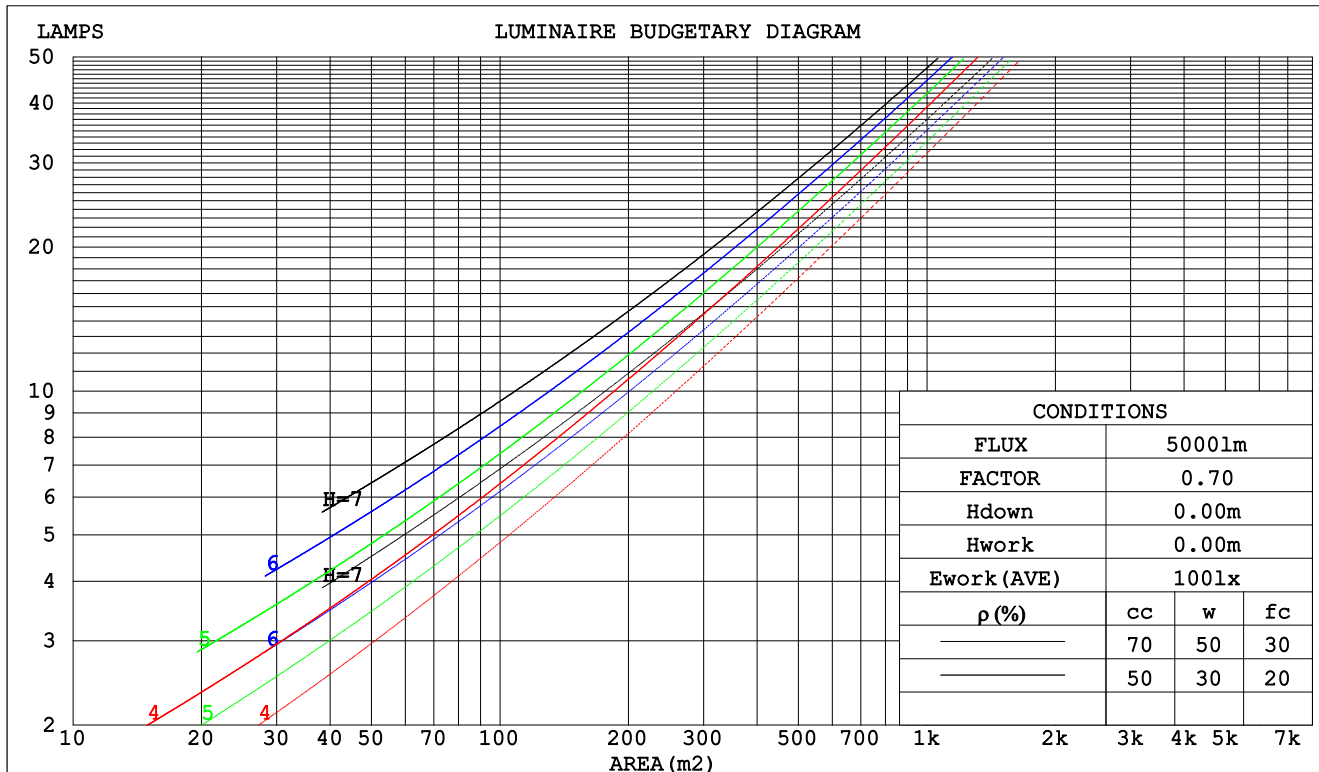
C Range: 0 - 360DEG
C Interval: 30.0DEG
Test Speed: HIGH
Temperature:25.3DEG
Operators:LPC
Test Date:2021-12-13

γ Range: 0 - 180DEG
γ Interval: 1.0DEG
Test System:EVERFINE GO-2000B_V1 SYSTEM V2.0.362
Humidity:65.0%
Test Distance:9.200m [K=1.0000]
Remarks:

CU AND LUMINAIRE BUDGETARY ESTIMATE DIAGRAM

Test:U:24.00V I:0.2353A P:5.647W PF:1.000 Freq:50.00Hz Lamp Flux:40.3243x1 lm		
NAME: SF21-24V-5050-70-SPI3-RGB-R	TYPE: 硅胶	WEIGHT:
SPEC.:	DIM.: 28mm*11.5mm	SERIAL No.:2021121311
MFR.: OLYMPIA	SUR.:1*0.016	Shielding Angle:

pcc	80%			70%			50%			30%			10%			0
pw	50%	30%	10%	50%	30%	10%	50%	30%	10%	50%	30%	10%	50%	30%	10%	0
pfc	20%			20%			20%			20%			20%			0
RCR	RCR:Room Cavity Ratio						Coefficients of Utilization(CU)									
0.0	1.14	1.14	1.14	1.09	1.09	1.09	.99	.99	.99	.90	.90	.90	.82	.82	.82	.78
1.0	.95	.89	.84	.90	.85	.81	.82	.78	.74	.74	.71	.68	.67	.65	.63	.59
2.0	.81	.73	.66	.77	.70	.64	.70	.64	.59	.63	.59	.55	.57	.54	.50	.47
3.0	.70	.61	.54	.67	.59	.52	.61	.54	.48	.55	.49	.45	.50	.45	.41	.38
4.0	.62	.52	.45	.59	.50	.43	.53	.46	.41	.49	.43	.38	.44	.39	.35	.32
5.0	.55	.45	.38	.52	.43	.37	.48	.40	.35	.43	.37	.32	.39	.34	.30	.27
6.0	.49	.40	.33	.47	.38	.32	.43	.35	.30	.39	.33	.28	.35	.30	.26	.23
7.0	.44	.35	.29	.42	.34	.28	.39	.31	.26	.35	.29	.25	.32	.27	.23	.21
8.0	.40	.31	.25	.38	.30	.25	.35	.28	.23	.32	.26	.22	.30	.24	.20	.18
9.0	.37	.28	.23	.35	.27	.22	.32	.26	.21	.30	.24	.20	.27	.22	.18	.16
10.0	.34	.26	.20	.32	.25	.20	.30	.23	.19	.28	.22	.18	.25	.20	.17	.15



C Range: 0 - 360DEG
 C Interval: 30.0DEG
 Test Speed: HIGH
 Temperature:25.3DEG
 Operators:LPC
 Test Date:2021-12-13

γ Range: 0 - 180DEG
 γ Interval: 1.0DEG
 Test System:EVERFINE GO-2000B_V1 SYSTEM V2.0.362
 Humidity:65.0%
 Test Distance:9.200m [K=1.0000]
 Remarks:

WEC AND CCEC

Test:U:24.00V I:0.2353A P:5.647W PF:1.000 Freq:50.00Hz Lamp Flux:40.3243x1 lm		
NAME: SF21-24V-5050-70-SPI3-RGB-R	TYPE: 硅胶	WEIGHT:
SPEC.:	DIM.: 28mm*11.5mm	SERIAL No.:2021121311
MFR.: OLYMPIA	SUR.:1*0.016	Shielding Angle:

pcc	80%			70%			50%			30%			10%			0	
pw	50%	30%	10%	50%	30%	10%	50%	30%	10%	50%	30%	10%	50%	30%	10%	0	
pfc	20%			20%			20%			20%			20%			0	
RCR	RCR:Room Cavity Ratio						Wall Exitance Coefficients(WEC)										
0.0																	
1.0	.386	.219	.070	.372	.212	.067	.346	.199	.063	.322	.186	.060	.300	.174	.056		
2.0	.333	.182	.056	.320	.176	.054	.297	.165	.051	.275	.154	.048	.255	.144	.045		
3.0	.295	.157	.047	.284	.152	.046	.262	.142	.043	.243	.133	.041	.224	.124	.038		
4.0	.265	.138	.041	.255	.133	.039	.236	.125	.037	.218	.117	.035	.201	.109	.033		
5.0	.241	.123	.036	.232	.119	.035	.214	.111	.033	.198	.104	.031	.182	.097	.029		
6.0	.221	.111	.032	.212	.107	.031	.196	.101	.029	.181	.094	.028	.167	.088	.026		
7.0	.204	.101	.029	.196	.098	.028	.181	.092	.026	.167	.086	.025	.154	.080	.024		
8.0	.189	.092	.026	.182	.089	.025	.168	.084	.024	.155	.079	.023	.143	.074	.021		
9.0	.176	.085	.024	.169	.083	.023	.157	.078	.022	.145	.073	.021	.134	.068	.020		
10.0	.165	.079	.022	.159	.077	.021	.147	.072	.020	.136	.068	.019	.126	.063	.018		

pcc	80%			70%			50%			30%			10%			0	
pw	50%	30%	10%	50%	30%	10%	50%	30%	10%	50%	30%	10%	50%	30%	10%	0	
pfc	20%			20%			20%			20%			20%			0	
RCR	RCR:Room Cavity Ratio						Ceiling Cavity Exitance Coefficients(CCEC)										
0.0	.356	.356	.356	.305	.305	.305	.208	.208	.208	.119	.119	.119	.038	.038	.038		
1.0	.353	.323	.296	.302	.277	.254	.207	.191	.176	.119	.110	.102	.038	.035	.033		
2.0	.346	.300	.261	.296	.258	.226	.203	.179	.158	.117	.104	.092	.038	.034	.030		
3.0	.339	.284	.240	.290	.245	.208	.199	.170	.146	.115	.099	.086	.037	.032	.028		
4.0	.331	.271	.226	.284	.235	.196	.195	.163	.138	.113	.096	.082	.036	.031	.027		
5.0	.323	.262	.216	.278	.226	.188	.191	.158	.133	.111	.093	.079	.036	.030	.026		
6.0	.316	.254	.209	.271	.220	.182	.187	.154	.129	.109	.091	.077	.035	.030	.025		
7.0	.309	.247	.204	.266	.214	.178	.184	.150	.126	.107	.089	.075	.034	.029	.025		
8.0	.302	.242	.200	.260	.210	.175	.180	.147	.124	.105	.087	.074	.034	.028	.024		
9.0	.296	.237	.197	.255	.206	.172	.177	.145	.122	.103	.085	.073	.033	.028	.024		
10.0	.290	.233	.195	.250	.202	.170	.174	.142	.121	.101	.084	.072	.033	.028	.024		

C Range: 0 - 360DEG
 C Interval: 30.0DEG
 Test Speed: HIGH
 Temperature:25.3DEG
 Operators:LPC
 Test Date:2021-12-13

γ Range: 0 - 180DEG
 γ Interval: 1.0DEG
 Test System:EVERFINE GO-2000B_V1 SYSTEM V2.0.362
 Humidity:65.0%
 Test Distance:9.200m [K=1.0000]
 Remarks:

UGR(Unified Glare Rating) Table

Test:U:24.00V I:0.2353A P:5.647W PF:1.000 Freq:50.00Hz Lamp Flux:40.3243x1 lm											
NAME: SF21-24V-5050-70-SPI3-RGB-R						TYPE:硅胶			WEIGHT:		
SPEC.:						DIM.: 28mm*11.5mm			SERIAL No.:2021121311		
MFR.: OLYMPIA						SUR.:1*0.016			Shielding Angle:		
ceiling/cavity	0.7	0.7	0.5	0.5	0.3	0.7	0.7	0.5	0.5	0.3	
walls	0.5	0.3	0.5	0.3	0.3	0.5	0.3	0.5	0.3	0.3	
working plane	0.2	0.2	0.2	0.2	0.2	0.2	0.2	0.2	0.2	0.2	
Room dimensions		Viewed crosswise					Viewed endwise				
x = 2H y = 2H	21.9	23.3	22.5	23.8	24.5	19.4	20.8	20.0	21.3	22.0	
	3H	24.7	25.9	25.3	26.5	27.2	20.8	22.1	21.4	22.6	23.3
	4H	26.3	27.4	26.9	28.0	28.7	21.4	22.5	22.0	23.1	23.8
	6H	28.0	29.1	28.6	29.7	30.4	21.7	22.8	22.3	23.4	24.1
	8H	29.0	30.0	29.6	30.6	31.4	21.7	22.8	22.4	23.4	24.2
	12H	30.1	31.1	30.7	31.7	32.5	21.7	22.8	22.4	23.4	24.2
4H	2H	22.5	23.6	23.1	24.3	25.0	20.7	21.9	21.3	22.5	23.2
	3H	25.5	26.5	26.2	27.2	27.9	22.4	23.4	23.1	24.1	24.8
	4H	27.3	28.2	27.9	28.9	29.6	23.2	24.1	23.9	24.8	25.6
	6H	29.2	30.0	29.9	30.7	31.5	23.8	24.6	24.5	25.3	26.1
	8H	30.3	31.1	31.0	31.8	32.6	24.0	24.7	24.7	25.4	26.3
	12H	31.5	32.2	32.2	33.0	33.8	24.1	24.8	24.8	25.5	26.4
8H	4H	27.6	28.4	28.3	29.1	29.9	24.4	25.2	25.1	25.9	26.8
	6H	29.8	30.5	30.6	31.2	32.1	25.5	26.1	26.2	26.9	27.7
	8H	31.2	31.7	31.9	32.5	33.4	25.9	26.5	26.7	27.3	28.2
	12H	32.7	33.2	33.4	33.9	34.9	26.3	26.8	27.0	27.6	28.5
12H	4H	27.6	28.3	28.3	29.1	29.9	24.9	25.6	25.6	26.3	27.2
	6H	30.0	30.6	30.7	31.3	32.2	26.2	26.8	26.9	27.5	28.4
	8H	31.4	31.9	32.1	32.7	33.6	26.8	27.3	27.6	28.1	29.0
Variations with the observer position at spacings:											
S = 1.0H	+ 0.1 / - 0.1					+ 0.1 / - 0.1					
1.5H	+ 0.2 / - 0.3					+ 0.2 / - 0.3					
2.0H	+ 0.2 / - 0.3					+ 0.3 / - 0.4					

CIE Pub.117, 40.32 lm Total Lamp Luminous Flux Correct (8log(F/F0) = -11.2)

C Range: 0 - 360DEG
C Interval: 30.0DEG
Test Speed: HIGH
Temperature:25.3DEG
Operators:LPC
Test Date:2021-12-13

γ Range: 0 - 180DEG
γ Interval: 1.0DEG
Test System:EVERFINE GO-2000B_V1 SYSTEM V2.0.362
Humidity:65.0%
Test Distance:9.200m [K=1.0000]
Remarks:

UTILIZATION FACTORS TABLE

Test:U:24.00V I:0.2353A P:5.647W PF:1.000 Freq:50.00Hz Lamp Flux:40.3243x1 lm		
NAME: SF21-24V-5050-70-SPI3-RGB-R	TYPE: 硅胶	WEIGHT:
SPEC.:	DIM.: 28mm*11.5mm	SERIAL No.:2021121311
MFR.: OLYMPIA	SUR.:1*0.016	Shielding Angle:

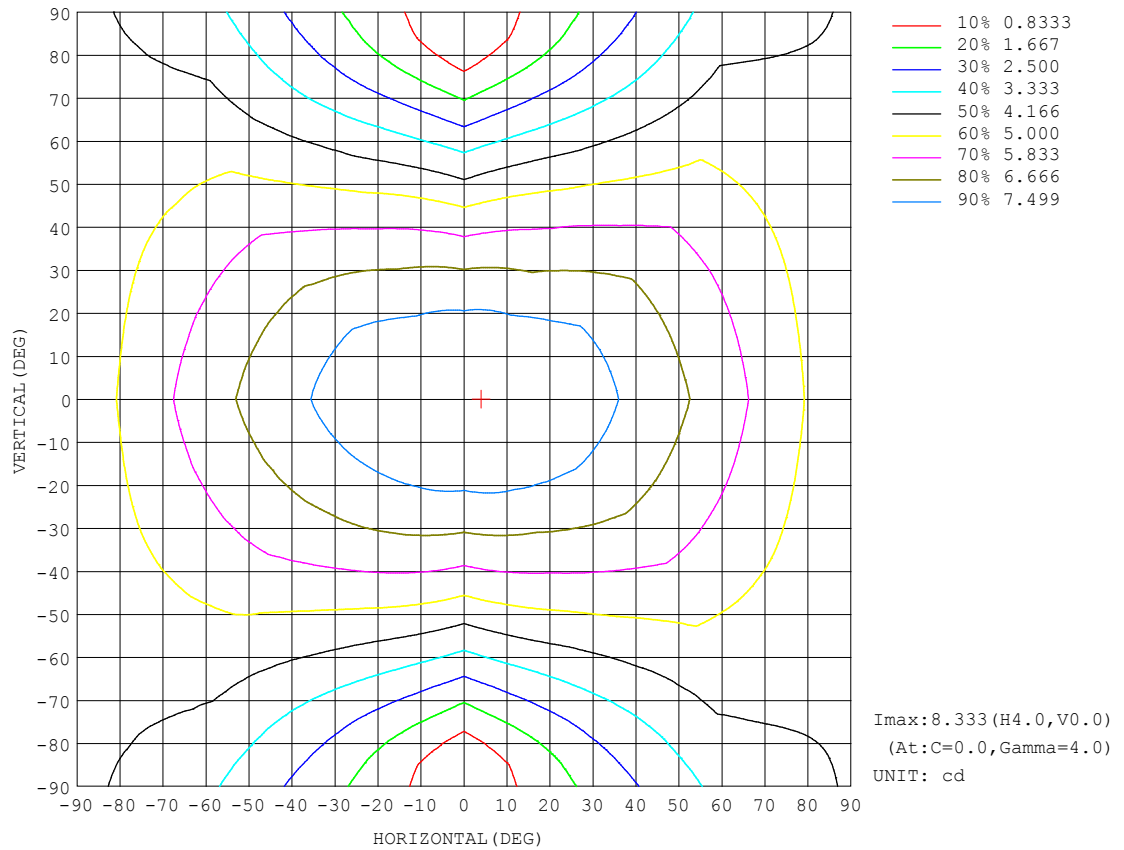
REFLECTANCE										
Ceiling	0.8	0.8	0.8	0.7	0.7	0.7	0.5	0.5	0.5	0
Walls	0.7	0.5	0.3	0.7	0.5	0.3	0.7	0.5	0.3	0
Working plane	0.2	0.2	0.2	0.2	0.2	0.2	0.2	0.2	0.2	0
ROOM INDEX	UTILIZATION FACTORS (PERCENT) $k(RI) \times RCR = 5$									
$k = 0.60$	47	34	27	45	34	27	43	33	26	19
0.80	56	43	35	54	42	34	51	40	33	25
1.00	63	50	42	61	49	41	57	49	40	31
1.25	70	57	49	68	56	48	63	53	46	36
1.50	75	63	54	72	61	53	67	58	51	40
2.00	83	71	63	79	69	61	73	65	58	46
2.50	87	77	69	84	74	67	77	69	63	49
3.00	91	81	74	87	78	72	80	73	67	53
4.00	96	88	81	91	84	78	84	78	73	57
5.00	99	92	86	94	88	83	86	81	77	60
ROOM INDEX	UF (total)									Direct
According to DIN EN 13032-2 2004			Suspended					SHRNOM = 1.25		

C Range: 0 - 360DEG
C Interval: 30.0DEG
Test Speed: HIGH
Temperature:25.3DEG
Operators:LPC
Test Date:2021-12-13

γ Range: 0 - 180DEG
 γ Interval: 1.0DEG
Test System:EVERFINE GO-2000B_V1 SYSTEM V2.0.362
Humidity:65.0%
Test Distance:9.200m [K=1.0000]
Remarks:

ISOCANDELA DIAGRAM

Test:U:24.00V I:0.2353A P:5.647W PF:1.000 Freq:50.00Hz Lamp Flux:40.3243x1 lm		
NAME: SF21-24V-5050-70-SPI3-RGB-R	TYPE: 硅胶	WEIGHT:
SPEC.:	DIM.: 28mm*11.5mm	SERIAL No.:2021121311
MFR.: OLYMPIA	SUR.:1*0.016	Shielding Angle:

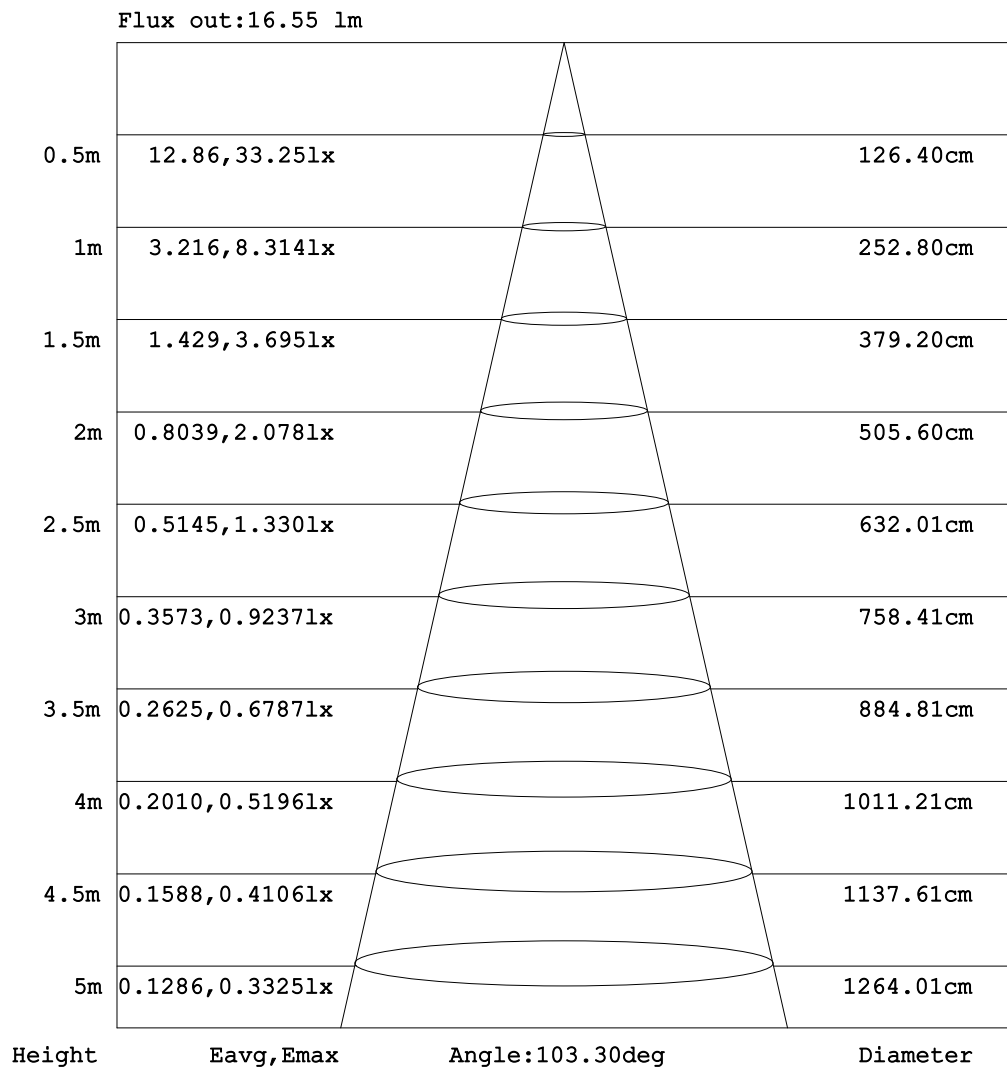


C Range: 0 - 360DEG
C Interval: 30.0DEG
Test Speed: HIGH
Temperature: 25.3DEG
Operators: LPC
Test Date: 2021-12-13

γ Range: 0 - 180DEG
 γ Interval: 1.0DEG
Test System: EVERFINE GO-2000B_V1 SYSTEM V2.0.362
Humidity: 65.0%
Test Distance: 9.200m [K=1.0000]
Remarks:

AAI Figure

Test:U:24.00V I:0.2353A P:5.647W PF:1.000 Freq:50.00Hz Lamp Flux:40.3243x1 lm		
NAME: SF21-24V-5050-70-SPI3-RGB-R	TYPE: 硅胶	WEIGHT:
SPEC.:	DIM.: 28mm*11.5mm	SERIAL No.:2021121311
MFR.: OLYMPIA	SUR.:1*0.016	Shielding Angle:



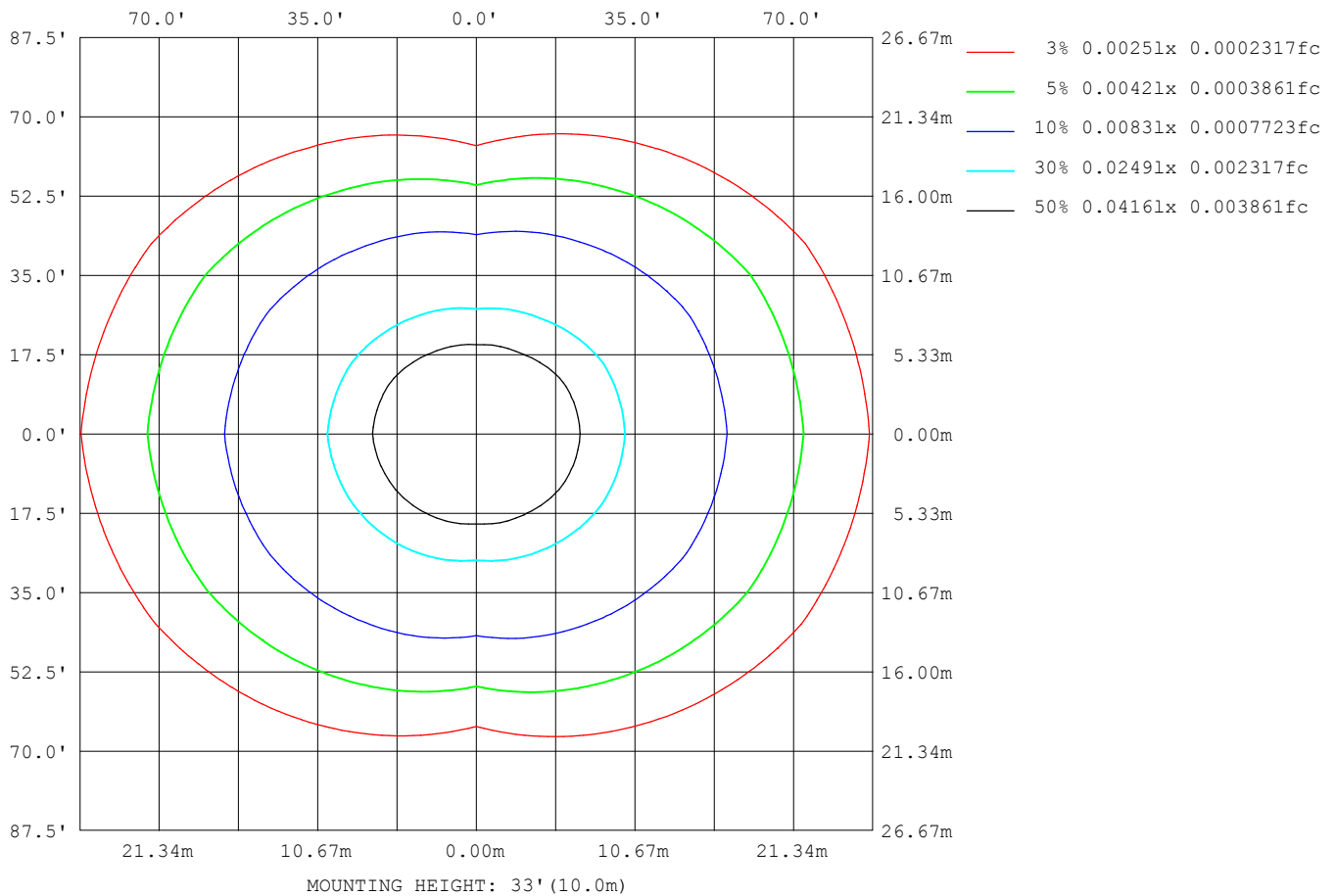
Note:The Curves indicate the illuminated area and the average illumination when the luminaire is at different distance.

C Range: 0 - 360DEG
 C Interval: 30.0DEG
 Test Speed: HIGH
 Temperature:25.3DEG
 Operators:LPC
 Test Date:2021-12-13

γ Range: 0 - 180DEG
 γ Interval: 1.0DEG
 Test System:EVERFINE GO-2000B_V1 SYSTEM V2.0.362
 Humidity:65.0%
 Test Distance:9.200m [K=1.0000]
 Remarks:

ISOLUX DIAGRAM

Test:U:24.00V I:0.2353A P:5.647W PF:1.000 Freq:50.00Hz Lamp Flux:40.3243x1 lm		
NAME: SF21-24V-5050-70-SPI3-RGB-R	TYPE: 硅胶	WEIGHT:
SPEC.:	DIM.: 28mm*11.5mm	SERIAL No.:2021121311
MFR.: OLYMPIA	SUR.:1*0.016	Shielding Angle:



C Range: 0 - 360DEG
C Interval: 30.0DEG
Test Speed: HIGH
Temperature:25.3DEG
Operators:LPC
Test Date:2021-12-13

γ Range: 0 - 180DEG
 γ Interval: 1.0DEG
Test System:EVERFINE GO-2000B_V1 SYSTEM V2.0.362
Humidity:65.0%
Test Distance:9.200m [K=1.0000]
Remarks:

LED Avg.L Report

Test:U:24.00V I:0.2353A P:5.647W PF:1.000 Freq:50.00Hz Lamp Flux:40.3243x1 lm		
NAME: SF21-24V-5050-70-SPI3-RGB-R	TYPE:硅胶	WEIGHT:
SPEC.:	DIM.: 28mm*11.5mm	SERIAL No.:2021121311
MFR.: OLYMPIA	SUR.:1*0.016	Shielding Angle:

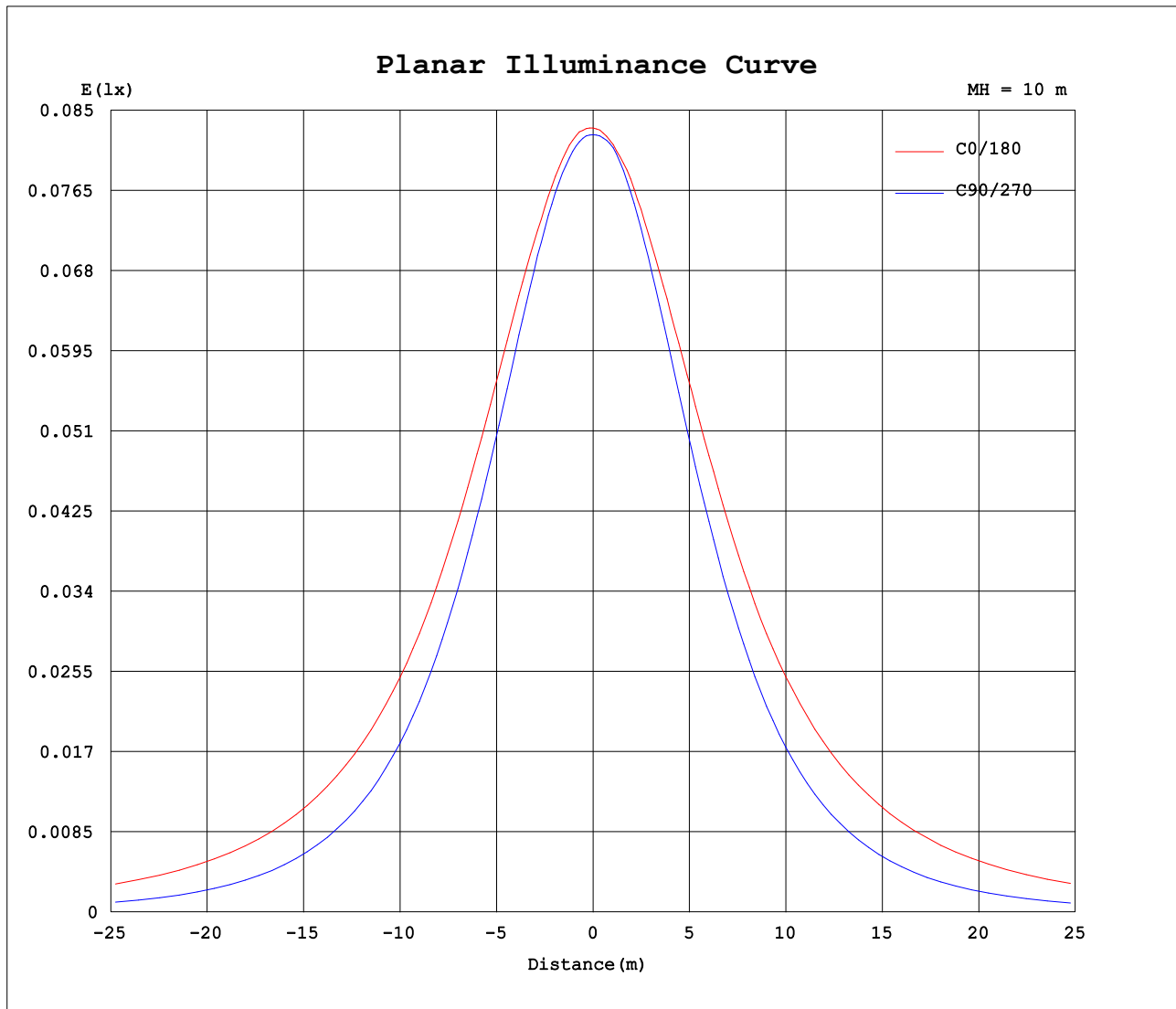
AvgL	cd/m2
L_0~180 (65) av	879
L_0~180 (75) av	1285
L_0~180 (85) av	3339
L_90~270 (65) av	346
L_90~270 (75) av	251
L_90~270 (85) av	69
L_45 (65) av	679
L_45 (75) av	917
L_45 (85) av	2236

Standard: GB/T 29293-2012

C Range: 0 - 360DEG
C Interval: 30.0DEG
Test Speed: HIGH
Temperature:25.3DEG
Operators:LPC
Test Date:2021-12-13

γ Range: 0 - 180DEG
γ Interval: 1.0DEG
Test System:EVERFINE GO-2000B_V1 SYSTEM V2.0.362
Humidity:65.0%
Test Distance:9.200m [K=1.0000]
Remarks:

Planar Illuminance Curve



C Range: 0 - 360DEG
C Interval: 30.0DEG
Test Speed: HIGH
Temperature: 25.3DEG
Operators: LPC
Test Date: 2021-12-13

γ Range: 0 - 180DEG
 γ Interval: 1.0DEG
Test System: EVERFINE GO-2000B_V1 SYSTEM V2.0.362
Humidity: 65.0%
Test Distance: 9.200m [K=1.0000]
Remarks:

LUMINOUS DISTRIBUTION INTENSITY DATA

Test:U:24.00V I:0.2353A P:5.647W PF:1.000 Freq:50.00Hz Lamp Flux:40.3243x1 lm		
NAME: SF21-24V-5050-70-SPI3-RGB-R	TYPE: 硅胶	WEIGHT:
SPEC.:	DIM.: 28mm*11.5mm	SERIAL No.:2021121311
MFR.: OLYMPIA	SUR.:1*0.016	Shielding Angle:

Table--1

UNIT: cd

C (DEG) γ (DEG)	0	30	60	90	120	150	180	210	240	270	300	330						
0	8.31	8.30	8.26	8.24	8.24	8.24	8.31	8.30	8.26	8.24	8.24	8.24						
5	8.33	8.27	8.25	8.22	8.24	8.19	8.28	8.30	8.23	8.24	8.23	8.24						
10	8.26	8.20	8.22	8.10	8.13	8.09	8.24	8.22	8.09	8.11	8.12	8.22						
15	8.15	8.09	8.03	7.88	7.95	7.96	8.12	8.08	7.89	7.87	7.92	8.12						
20	8.05	7.92	7.76	7.58	7.68	7.80	8.00	7.92	7.61	7.54	7.64	7.94						
25	7.92	7.74	7.43	7.20	7.38	7.62	7.88	7.73	7.31	7.13	7.31	7.75						
30	7.75	7.51	7.05	6.74	7.03	7.39	7.72	7.51	6.95	6.68	6.91	7.56						
35	7.54	7.26	6.64	6.24	6.65	7.12	7.53	7.25	6.58	6.15	6.53	7.33						
40	7.30	6.98	6.23	5.68	6.23	6.80	7.28	6.95	6.16	5.56	6.14	7.07						
45	7.05	6.66	5.79	5.07	5.77	6.51	7.06	6.63	5.70	4.95	5.73	6.77						
50	6.80	6.33	5.32	4.44	5.27	6.21	6.82	6.33	5.22	4.29	5.27	6.44						
55	6.52	6.01	4.83	3.79	4.76	5.87	6.58	6.01	4.70	3.64	4.79	6.13						
60	6.22	5.66	4.32	3.11	4.26	5.51	6.31	5.66	4.19	2.95	4.29	5.78						
65	5.91	5.30	3.83	2.42	3.77	5.18	5.99	5.30	3.72	2.26	3.80	5.42						
70	5.59	4.94	3.36	1.74	3.29	4.82	5.68	4.96	3.23	1.60	3.33	5.08						
75	5.27	4.61	2.91	1.10	2.84	4.49	5.37	4.61	2.76	0.98	2.87	4.73						
80	4.94	4.26	2.51	0.52	2.44	4.16	5.05	4.29	2.37	0.43	2.47	4.40						
85	4.59	3.94	2.17	0.12	2.13	3.84	4.72	3.97	2.03	0.08	2.13	4.08						
90	4.23	3.59	1.90	0.10	1.84	3.51	4.38	3.63	1.76	0.04	1.86	3.75						
95	3.89	3.27	1.67	0.10	1.63	3.20	4.03	3.32	1.57	0.04	1.63	3.42						
100	3.48	2.71	1.52	0.10	1.49	2.68	3.61	2.78	1.40	0.04	1.46	2.84						
105	3.17	2.54	1.29	0.12	1.12	2.53	3.32	2.62	1.14	0.05	1.24	2.67						
110	2.87	2.35	1.22	0.12	1.08	2.21	3.00	2.32	1.02	0.05	1.20	2.46						
115	2.61	2.15	1.16	0.12	1.03	1.99	2.61	2.16	0.95	0.05	1.07	2.26						
120	2.40	1.99	1.03	0.12	0.94	1.84	2.41	1.98	0.93	0.05	0.94	2.11						
125	2.19	1.84	0.91	0.13	0.88	1.71	2.21	1.79	0.85	0.05	0.84	1.94						
130	1.99	1.61	0.81	0.14	0.79	1.54	1.98	1.62	0.77	0.05	0.72	1.71						
135	1.79	1.28	0.73	0.14	0.74	1.35	1.77	1.49	0.74	0.06	0.63	1.42						
140	1.59	1.06	0.65	0.15	0.69	1.20	1.44	1.23	0.68	0.06	0.55	1.13						
145	1.42	0.89	0.58	0.15	0.65	1.00	1.17	1.13	0.62	0.07	0.49	0.94						
150	1.23	0.74	0.52	0.15	0.61	0.87	0.99	0.96	0.59	0.11	0.47	0.78						
155	1.06	0.60	0.50	0.15	0.51	0.76	0.80	0.80	0.48	0.12	0.45	0.65						
160	0.85	0.48	0.49	0.15	0.43	0.63	0.70	0.70	0.40	0.12	0.44	0.51						
165	0.70	0.39	0.45	0.15	0.38	0.50	0.58	0.44	0.36	0.12	0.40	0.46						
170	0.37	0.37	0.40	0.15	0.31	0.39	0.34	0.42	0.28	0.12	0.36	0.44						
175	0.28	0.29	0.33	0.15	0.21	0.26	0.27	0.38	0.22	0.14	0.31	0.37						
180	0.17	0.16	0.16	0.15	0.16	0.16	0.17	0.18	0.16	0.14	0.14	0.17						

C Range: 0 - 360DEG
C Interval: 30.0DEG
Test Speed: HIGH
Temperature:25.3DEG
Operators:LPC
Test Date:2021-12-13

γ Range: 0 - 180DEG
γ Interval: 1.0DEG
Test System:EVERFINE GO-2000B_V1 SYSTEM V2.0.362
Humidity:65.0%
Test Distance:9.200m [K=1.0000]
Remarks:

Photometric Data Table [cd]

G/C	0.0	30.0	60.0	90.0	120.0	150.0	180.0	210.0	240.0	270.0
0.0	8.313	8.297	8.257	8.242	8.237	8.237	8.313	8.297	8.257	8.242
3.0	8.323	8.287	8.262	8.237	8.237	8.227	8.292	8.297	8.242	8.242
6.0	8.318	8.257	8.247	8.197	8.237	8.177	8.272	8.293	8.192	8.237
9.0	8.283	8.232	8.232	8.131	8.167	8.116	8.237	8.242	8.121	8.157
12.0	8.222	8.162	8.142	8.021	8.067	8.056	8.192	8.167	8.021	8.031
15.0	8.152	8.086	8.027	7.880	7.946	7.955	8.121	8.082	7.890	7.871
18.0	8.102	7.995	7.876	7.709	7.796	7.870	8.051	7.991	7.739	7.685
21.0	8.031	7.875	7.695	7.518	7.630	7.770	7.990	7.881	7.558	7.469
24.0	7.946	7.770	7.494	7.277	7.444	7.664	7.915	7.765	7.372	7.223
27.0	7.851	7.664	7.283	7.015	7.243	7.533	7.830	7.650	7.181	6.952
30.0	7.745	7.513	7.047	6.744	7.027	7.392	7.724	7.514	6.950	6.680
33.0	7.630	7.367	6.801	6.457	6.801	7.232	7.614	7.363	6.724	6.369
36.0	7.499	7.206	6.569	6.135	6.575	7.056	7.478	7.192	6.497	6.037
39.0	7.353	7.035	6.313	5.794	6.323	6.870	7.342	7.011	6.251	5.685
42.0	7.197	6.855	6.052	5.442	6.052	6.679	7.191	6.811	5.985	5.318
45.0	7.052	6.664	5.786	5.075	5.771	6.513	7.056	6.629	5.703	4.946
48.0	6.906	6.472	5.509	4.698	5.474	6.332	6.940	6.454	5.417	4.559
51.0	6.740	6.272	5.228	4.311	5.173	6.136	6.779	6.273	5.115	4.168
54.0	6.584	6.076	4.926	3.924	4.861	5.935	6.633	6.077	4.804	3.781
57.0	6.403	5.870	4.630	3.527	4.549	5.729	6.467	5.871	4.492	3.373
60.0	6.217	5.663	4.318	3.115	4.258	5.513	6.306	5.659	4.190	2.951
63.0	6.037	5.437	4.027	2.687	3.967	5.301	6.106	5.444	3.904	2.544
66.0	5.846	5.226	3.735	2.286	3.675	5.105	5.930	5.237	3.607	2.137
69.0	5.655	5.015	3.459	1.878	3.388	4.884	5.754	5.021	3.321	1.730
72.0	5.464	4.799	3.177	1.486	3.102	4.688	5.578	4.820	3.034	1.348
75.0	5.273	4.608	2.911	1.105	2.841	4.487	5.372	4.614	2.763	0.9761
78.0	5.072	4.392	2.660	0.7429	2.594	4.291	5.181	4.418	2.517	0.6241
81.0	4.871	4.196	2.428	0.4414	2.373	4.091	4.990	4.222	2.286	0.3374
84.0	4.665	4.005	2.232	0.1952	2.177	3.909	4.779	4.036	2.095	0.1062
87.0	4.449	3.804	2.056	0.0955	2.006	3.699	4.583	3.830	1.914	0.0504
90.0	4.232	3.593	1.895	0.0955	1.845	3.507	4.377	3.634	1.764	0.0403
93.0	4.026	3.407	1.759	0.0975	1.704	3.331	4.160	3.443	1.628	0.0402
96.0	3.820	3.211	1.634	0.1006	1.604	3.141	3.969	3.257	1.522	0.0402
99.0	3.599	2.819	1.538	0.1036	1.518	2.694	3.678	2.811	1.427	0.0402
102.0	3.353	2.653	1.443	0.1156	1.348	2.623	3.492	2.734	1.240	0.0402
105.0	3.167	2.543	1.292	0.1169	1.121	2.527	3.316	2.619	1.141	0.0452
108.0	2.991	2.432	1.272	0.1181	1.096	2.386	3.120	2.453	1.065	0.0452
111.0	2.820	2.297	1.201	0.1194	1.073	2.161	2.888	2.292	1.010	0.0503
114.0	2.669	2.206	1.171	0.1208	1.030	2.040	2.658	2.192	0.9532	0.0503
117.0	2.524	2.090	1.141	0.1223	0.9803	1.925	2.543	2.091	0.9331	0.0503
120.0	2.403	1.995	1.031	0.1238	0.9350	1.839	2.407	1.975	0.9280	0.0503
123.0	2.272	1.904	0.9603	0.1253	0.8997	1.759	2.281	1.860	0.9143	0.0503
126.0	2.151	1.819	0.8798	0.1300	0.8696	1.668	2.151	1.754	0.8388	0.0503
129.0	2.026	1.678	0.8245	0.1364	0.8095	1.578	2.040	1.674	0.7739	0.0503
132.0	1.905	1.497	0.7741	0.1404	0.7692	1.467	1.819	1.583	0.7648	0.0503
135.0	1.790	1.276	0.7288	0.1444	0.7391	1.347	1.769	1.493	0.7386	0.0553
138.0	1.669	1.160	0.6786	0.1457	0.6987	1.256	1.562	1.302	0.6984	0.0653
141.0	1.568	1.010	0.6334	0.1457	0.6836	1.176	1.346	1.211	0.6631	0.0603
144.0	1.453	0.9195	0.5932	0.1457	0.6635	1.040	1.211	1.151	0.6281	0.0703
147.0	1.342	0.8289	0.5580	0.1457	0.6384	0.9447	1.081	1.066	0.6130	0.0803
150.0	1.232	0.7434	0.5179	0.1457	0.6083	0.8742	0.9948	0.9601	0.5874	0.1121
153.0	1.126	0.6481	0.5088	0.1457	0.5230	0.7839	0.8889	0.8697	0.4975	0.1172
156.0	1.021	0.5827	0.4997	0.1457	0.4927	0.7235	0.7582	0.7842	0.4571	0.1185
159.0	0.9001	0.5173	0.4906	0.1457	0.4425	0.6830	0.6936	0.7038	0.4070	0.1197
162.0	0.8044	0.4371	0.4775	0.1457	0.4171	0.5577	0.7137	0.6136	0.3769	0.1210
165.0	0.6990	0.3869	0.4524	0.1457	0.3821	0.4973	0.5777	0.4424	0.3617	0.1223
168.0	0.3972	0.3768	0.4122	0.1457	0.3268	0.4372	0.3668	0.4307	0.3065	0.1235
171.0	0.3570	0.3614	0.3871	0.1457	0.2917	0.3567	0.3215	0.4190	0.2764	0.1248
174.0	0.2917	0.2915	0.3470	0.1457	0.2415	0.2912	0.2763	0.4073	0.2360	0.1306
177.0	0.2415	0.2008	0.2566	0.1457	0.1710	0.1908	0.2161	0.3269	0.1857	0.1357
180.0	0.1658	0.1608	0.1608	0.1457	0.1608	0.1608	0.1709	0.1759	0.1608	0.1357
G/C	300.0	330.0								
0.0	8.237	8.237								
3.0	8.237	8.242								
6.0	8.207	8.233								
9.0	8.151	8.224								
12.0	8.041	8.197								
15.0	7.915	8.117								
18.0	7.759	8.011								
21.0	7.588	7.901								
24.0	7.382	7.790								
27.0	7.151	7.680								
30.0	6.915	7.564								

C Range: 0 - 360DEG
 C Interval: 30.0DEG
 Test Speed: HIGH
 Temperature: 25.3DEG
 Operators: LPC
 Test Date: 2021-12-13

γ Range: 0 - 180DEG
 γ Interval: 1.0DEG
 Test System: EVERFINE GO-2000B_V1 SYSTEM V2.0.362
 Humidity: 65.0%
 Test Distance: 9.200m [K=1.0000]
 Remarks:

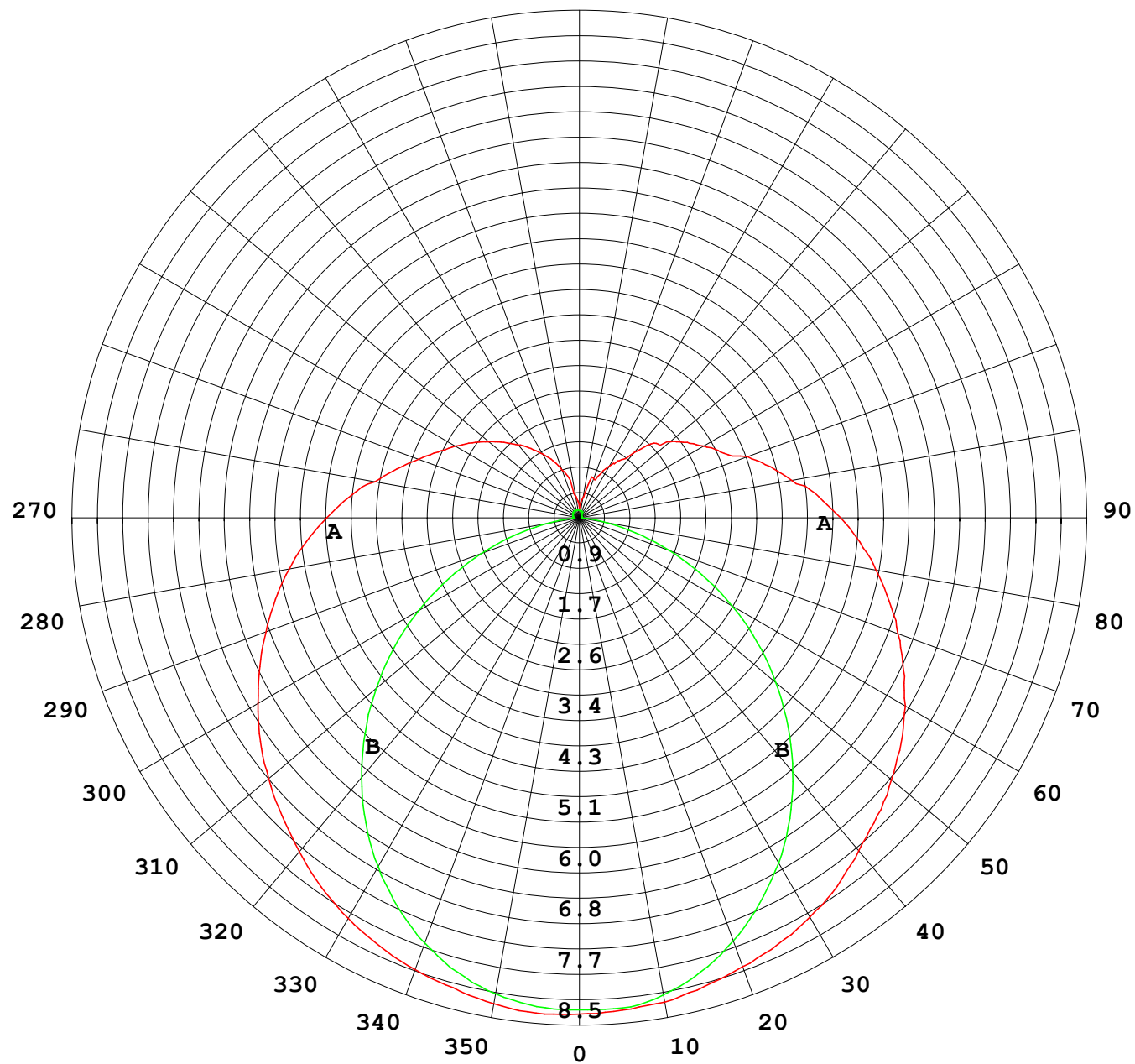
Photometric Data Table [cd]

33.0	6.673	7.438
36.0	6.447	7.283
39.0	6.211	7.127
42.0	5.965	6.946
45.0	5.728	6.765
48.0	5.457	6.574
51.0	5.175	6.373
54.0	4.884	6.187
57.0	4.592	5.991
60.0	4.291	5.775
63.0	3.994	5.564
66.0	3.703	5.358
69.0	3.416	5.142
72.0	3.145	4.941
75.0	2.874	4.735
78.0	2.623	4.529
81.0	2.396	4.338
84.0	2.195	4.147
87.0	2.020	3.946
90.0	1.864	3.755
93.0	1.723	3.554
96.0	1.588	3.363
99.0	1.492	2.942
102.0	1.401	2.794
105.0	1.241	2.669
108.0	1.206	2.548
111.0	1.166	2.418
114.0	1.115	2.297
117.0	1.030	2.192
120.0	0.9397	2.106
123.0	0.9043	2.006
126.0	0.8339	1.910
129.0	0.7584	1.785
132.0	0.6884	1.589
135.0	0.6280	1.423
138.0	0.5877	1.182
141.0	0.5427	1.091
144.0	0.5074	0.9653
147.0	0.4747	0.8698
150.0	0.4672	0.7792
153.0	0.4597	0.7139
156.0	0.4459	0.6134
159.0	0.4415	0.5379
162.0	0.4372	0.4876
165.0	0.4020	0.4552
168.0	0.3818	0.4487
171.0	0.3518	0.4423
174.0	0.3215	0.4022
177.0	0.2057	0.3219
180.0	0.1407	0.1658

C Range: 0 - 360DEG
C Interval: 30.0DEG
Test Speed: HIGH
Temperature:25.3DEG
Operators:LPC
Test Date:2021-12-13

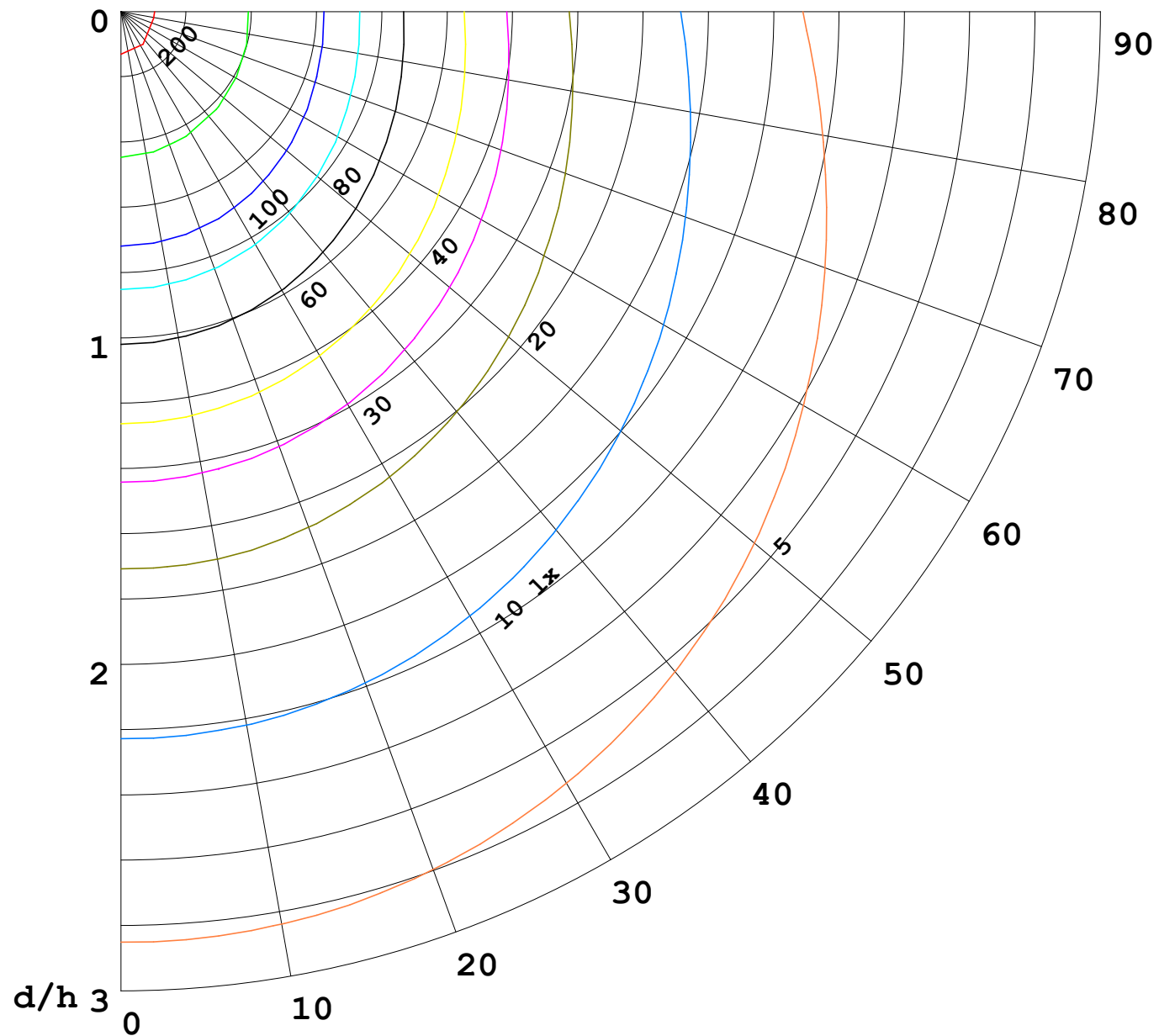
γ Range: 0 - 180DEG
γ Interval: 1.0DEG
Test System:EVERFINE GO-2000B_V1 SYSTEM V2.0.362
Humidity:65.0%
Test Distance:9.200m [K=1.0000]
Remarks:

I (cd)



1000 lm

$\kappa = 1$



F = 5000 lm
 K = 0.7
 Hcc = 0.0 m
 Hfc = 0.0 m
 Eave = 100 lx

	Pcc	Pw	Pfc
—	70	50	30
—	50	30	20

