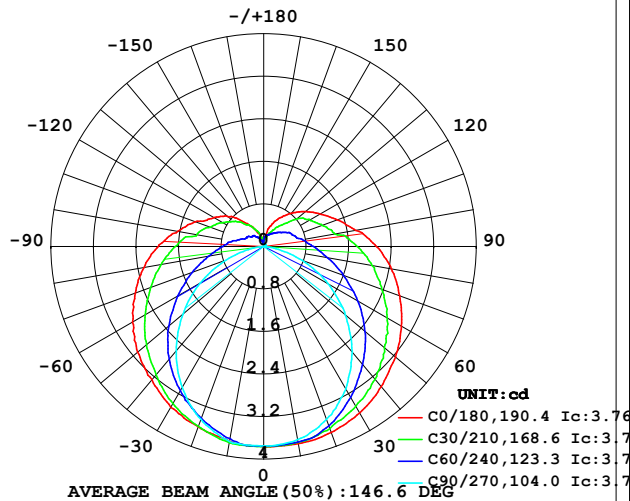


LUMINAIRE PHOTOMETRIC TEST REPORT

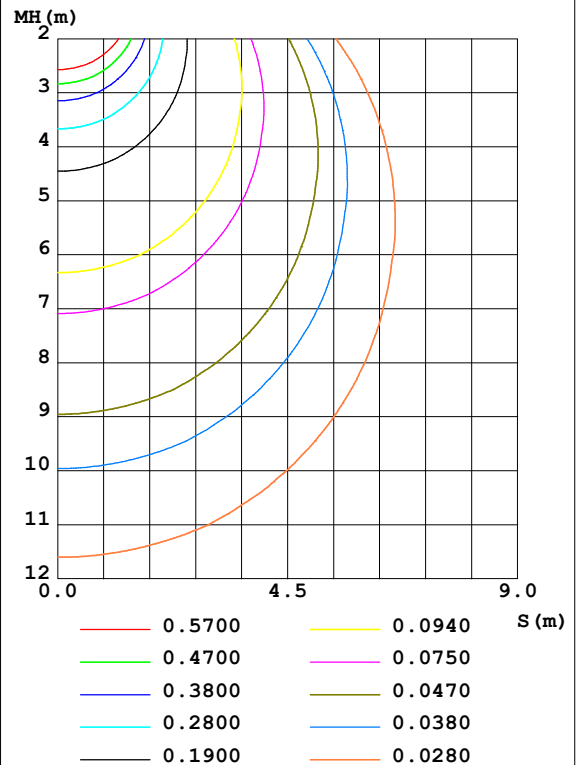
Test:U:24.00V I:0.2352A P:5.645W PF:1.000 Freq:50.00Hz Lamp Flux:18.6917x1 lm		
NAME: SF21-24V-5050-70-SPI3-RGB-B	TYPE: 硅胶	WEIGHT:
SPEC.:	DIM.: 28mm*11.5mm	SERIAL No.:2021121313
MFR.: OLYMPIA	SUR.:1*0.016	Shielding Angle:

DATA OF LAMP		PHOTOMETRIC DATA				Eff: 3.31 lm/W
MODEL	5050	I _{max} (cd)	3.769	S/MH (C0/180)	1.38	
NOMINAL POWER (W)	5	LOR (%)	100.0	S/MH (C90/270)	1.22	
RATED VOLTAGE (V)	24	TOTAL FLUX (lm)	18.692	η UP, DN (C0-180)	11.3, 39.3	
NOMINAL FLUX (lm)	18.6917	CIE CLASS	SEMI-D.	η UP, DN (C180-360)	10.7, 38.7	
LAMPS INSIDE	1	η up (%)	22.0	CIBSE SHR NOM	1.50	
TEST VOLTAGE (V)	24	η down (%)	78.0	CIBSE SHR MAX	1.55	

LUMINOUS INTENSITY DISTRIBUTION DIAGRAM



C0 PLANE ISOLUX DIAGRAM (UNIT: lx)



C Range: 0 - 360DEG
C Interval: 30.0DEG
Test Speed: HIGH
Temperature: 25.3DEG
Operators: LPC
Test Date: 2021-12-13

γ Range: 0 - 180DEG
γ Interval: 1.0DEG
Test System: EVERFINE GO-2000B_V1 SYSTEM V2.0.362
Humidity: 65.0%
Test Distance: 9.200m [K=1.0000]
Remarks:

ZONAL FLUX DIAGRAM

ZONAL FLUX DIAGRAM:

γ	C0	C45	C90	C135	C180	C225	C270	C315	γ	Φ zone	Φ total	%lum, lamp
10	3.763	3.738	3.689	3.706	3.719	3.709	3.724	3.727	0- 10	0.3572	0.3572	1.91,1.91
20	3.719	3.619	3.462	3.551	3.608	3.518	3.458	3.586	10- 20	1.033	1.390	7.44,7.44
30	3.614	3.375	3.095	3.310	3.498	3.274	3.066	3.345	20- 30	1.593	2.983	16,16
40	3.443	3.078	2.598	2.985	3.272	2.958	2.564	3.058	30- 40	1.984	4.967	26.6,26.6
50	3.237	2.727	2.005	2.634	3.096	2.601	1.986	2.729	40- 50	2.184	7.152	38.3,38.3
60	2.991	2.362	1.402	2.242	2.854	2.221	1.378	2.362	50- 60	2.192	9.343	50,50
70	2.724	1.980	0.7684	1.862	2.568	1.847	0.7593	1.985	60- 70	2.029	11.37	60.8,60.8
80	2.438	1.641	0.1955	1.525	2.286	1.505	0.1964	1.648	70- 80	1.756	13.13	70.2,70.2
90	2.121	1.349	0.0251	1.231	1.980	1.216	0	1.359	80- 90	1.453	14.58	78,78
100	1.760	1.053	0.0251	0.9650	1.648	0.9423	0	1.051	90-100	1.191	15.77	84.4,84.4
110	1.473	0.8896	0.0352	0.7593	1.372	0.7463	0	0.8920	100-110	0.9203	16.69	89.3,89.3
120	1.227	0.7640	0.0352	0.6333	1.090	0.6313	0	0.7514	110-120	0.7151	17.41	93.1,93.1
130	1.021	0.6105	0.0402	0.5252	0.8793	0.5135	0	0.5856	120-130	0.5394	17.95	96,96
140	0.8244	0.4322	0.0452	0.4120	0.6180	0.3946	0	0.3824	130-140	0.3622	18.31	98,98
150	0.6284	0.3141	0.0302	0.2991	0.4319	0.3041	0	0.2628	140-150	0.2148	18.52	99.1,99.1
160	0.4274	0.2314	0.0302	0.2060	0.2611	0.1986	0	0.1883	150-160	0.1127	18.64	99.7,99.7
170	0.1809	0.1694	0.0302	0.1115	0.1205	0.1109	0	0.1552	160-170	0.0461	18.68	100,100
180	0.0452	0.0503	0.0251	0.0402	0.0352	0.0503	0.0452	0.0402	170-180	0.0092	18.69	100,100
DEG	LUMINOUS INTENSITY:cd									UNIT:lm		

Conical surface Flux(90deg): 6.0465 lm

%lum = 32.3%

%lamp = 32.3%

Conical surface Flux(120deg): 9.3431 lm

%lum = 50.0%

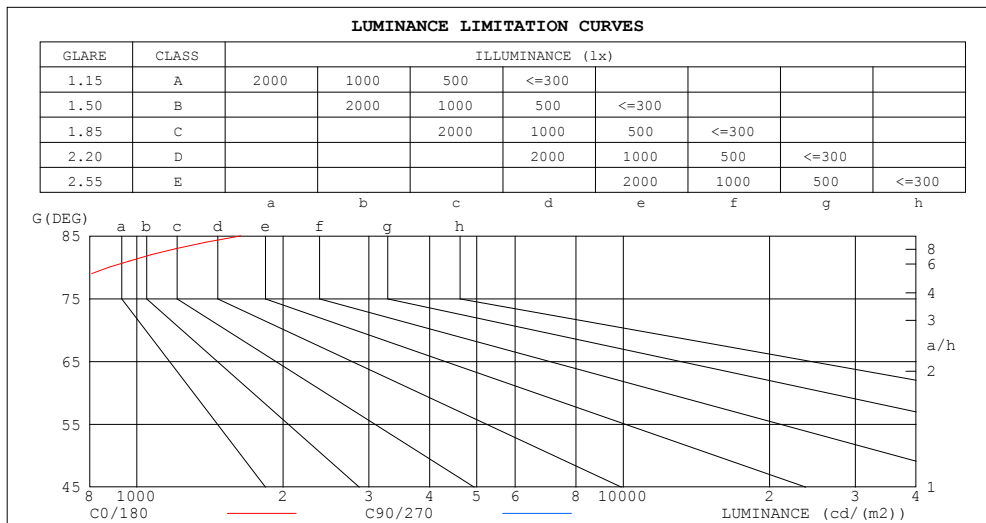
%lamp = 50.0%

C Range: 0 - 360DEG
 C Interval: 30.0DEG
 Test Speed: HIGH
 Temperature:25.3DEG
 Operators:LPC
 Test Date:2021-12-13

γ Range: 0 - 180DEG
 γ Interval: 1.0DEG
 Test System:EVERFINE GO-2000B_V1 SYSTEM V2.0.362
 Humidity:65.0%
 Test Distance:9.200m [K=1.0000]
 Remarks:

LUMINANCE LIMITATION CURVES

Test:U:24.00V I:0.2352A P:5.645W PF:1.000 Freq:50.00Hz Lamp Flux:18.6917x1 lm		
NAME: SF21-24V-5050-70-SPI3-RGB-B	TYPE: 硅胶	WEIGHT:
SPEC.:	DIM.: 28mm*11.5mm	SERIAL No.:2021121313
MFR.: OLYMPIA	SUR.:1*0.016	Shielding Angle:



LUMINANCE cd/(m2)		
G (DEG)	C0/180	C90/270
85	1637	29
80	877	70
75	625	112
70	498	140
65	423	159
60	374	175
55	340	186
50	315	195
45	295	203

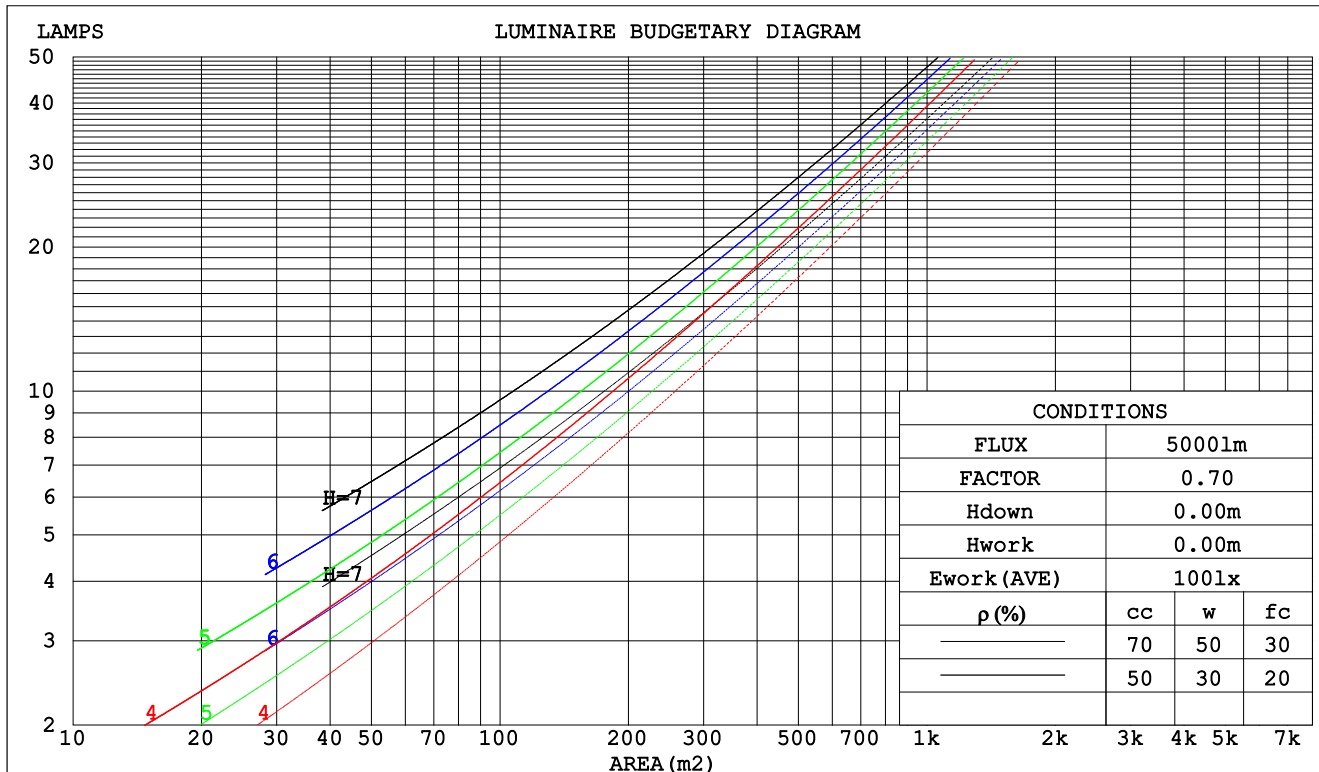
C Range: 0 - 360DEG
C Interval: 30.0DEG
Test Speed: HIGH
Temperature:25.3DEG
Operators:LPC
Test Date:2021-12-13

γ Range: 0 - 180DEG
 γ Interval: 1.0DEG
Test System:EVERFINE GO-2000B_V1 SYSTEM V2.0.362
Humidity:65.0%
Test Distance:9.200m [K=1.0000]
Remarks:

CU AND LUMINAIRE BUDGETARY ESTIMATE DIAGRAM

Test:U:24.00V I:0.2352A P:5.645W PF:1.000 Freq:50.00Hz Lamp Flux:18.6917x1 lm		
NAME: SF21-24V-5050-70-SPI3-RGB-B	TYPE: 硅胶	WEIGHT:
SPEC.:	DIM.: 28mm*11.5mm	SERIAL No.:2021121313
MFR.: OLYMPIA	SUR.:1*0.016	Shielding Angle:

pcc	80%			70%			50%			30%			10%			0
pw	50%	30%	10%	50%	30%	10%	50%	30%	10%	50%	30%	10%	50%	30%	10%	0
pfc	20%			20%			20%			20%			20%			0
RCR	RCR:Room Cavity Ratio						Coefficients of Utilization(CU)									
0.0	1.14	1.14	1.14	1.09	1.09	1.09	.99	.99	.99	.90	.90	.90	.82	.82	.82	.78
1.0	.95	.89	.84	.90	.85	.81	.82	.78	.74	.74	.71	.68	.67	.64	.62	.58
2.0	.81	.73	.66	.77	.70	.64	.70	.64	.59	.63	.58	.54	.57	.53	.50	.46
3.0	.70	.61	.54	.67	.58	.52	.61	.54	.48	.55	.49	.45	.49	.45	.41	.38
4.0	.61	.52	.45	.59	.50	.43	.53	.46	.40	.48	.42	.37	.44	.39	.35	.32
5.0	.54	.45	.38	.52	.43	.37	.47	.40	.34	.43	.37	.32	.39	.34	.30	.27
6.0	.49	.39	.33	.47	.38	.32	.43	.35	.30	.39	.33	.28	.35	.30	.26	.23
7.0	.44	.35	.29	.42	.34	.28	.39	.31	.26	.35	.29	.24	.32	.27	.23	.20
8.0	.40	.31	.25	.38	.30	.24	.35	.28	.23	.32	.26	.22	.29	.24	.20	.18
9.0	.36	.28	.22	.35	.27	.22	.32	.25	.21	.30	.24	.19	.27	.22	.18	.16
10.0	.34	.26	.20	.32	.25	.20	.30	.23	.19	.27	.22	.17	.25	.20	.16	.14



C Range: 0 - 360DEG
 C Interval: 30.0DEG
 Test Speed: HIGH
 Temperature:25.3DEG
 Operators:LPC
 Test Date:2021-12-13

γ Range: 0 - 180DEG
 γ Interval: 1.0DEG
 Test System:EVERFINE GO-2000B_V1 SYSTEM V2.0.362
 Humidity:65.0%
 Test Distance:9.200m [K=1.0000]
 Remarks:

WEC AND CCEC

Test:U:24.00V I:0.2352A P:5.645W PF:1.000 Freq:50.00Hz Lamp Flux:18.6917x1 lm		
NAME: SF21-24V-5050-70-SPI3-RGB-B	TYPE: 硅胶	WEIGHT:
SPEC.:	DIM.: 28mm*11.5mm	SERIAL No.:2021121313
MFR.: OLYMPIA	SUR.:1*0.016	Shielding Angle:

pcc	80%			70%			50%			30%			10%			0	
pw	50%	30%	10%	50%	30%	10%	50%	30%	10%	50%	30%	10%	50%	30%	10%	0	
pfc	20%			20%			20%			20%			20%			0	
RCR	RCR:Room Cavity Ratio						Wall Exitance Coefficients(WEC)										
0.0																	
1.0	.388	.221	.070	.374	.213	.068	.348	.200	.064	.324	.187	.060	.302	.175	.056		
2.0	.334	.183	.056	.321	.177	.055	.298	.165	.051	.276	.155	.048	.256	.145	.046		
3.0	.296	.157	.047	.284	.152	.046	.263	.143	.043	.243	.133	.041	.225	.124	.039		
4.0	.266	.138	.041	.256	.134	.040	.236	.125	.037	.218	.117	.035	.201	.109	.033		
5.0	.241	.123	.036	.232	.119	.035	.214	.112	.033	.198	.104	.031	.182	.097	.029		
6.0	.221	.111	.032	.213	.107	.031	.196	.101	.029	.181	.094	.028	.167	.088	.026		
7.0	.204	.101	.029	.196	.098	.028	.181	.092	.026	.167	.086	.025	.154	.080	.024		
8.0	.189	.092	.026	.182	.090	.025	.168	.084	.024	.155	.079	.023	.143	.074	.021		
9.0	.176	.085	.024	.169	.083	.023	.157	.078	.022	.145	.073	.021	.134	.068	.020		
10.0	.165	.079	.022	.159	.077	.021	.147	.072	.020	.136	.067	.019	.125	.063	.018		

pcc	80%			70%			50%			30%			10%			0	
pw	50%	30%	10%	50%	30%	10%	50%	30%	10%	50%	30%	10%	50%	30%	10%	0	
pfc	20%			20%			20%			20%			20%			0	
RCR	RCR:Room Cavity Ratio						Ceiling Cavity Exitance Coefficients(CCEC)										
0.0	.358	.358	.358	.306	.306	.306	.209	.209	.209	.120	.120	.120	.038	.038	.038		
1.0	.355	.324	.297	.303	.278	.256	.208	.192	.177	.119	.111	.103	.038	.036	.033		
2.0	.348	.302	.263	.298	.260	.227	.204	.180	.159	.118	.105	.093	.038	.034	.030		
3.0	.340	.285	.242	.292	.246	.209	.200	.171	.147	.116	.100	.087	.037	.032	.028		
4.0	.333	.273	.228	.285	.236	.198	.196	.164	.139	.114	.096	.082	.037	.031	.027		
5.0	.325	.263	.218	.279	.228	.190	.192	.159	.134	.111	.093	.079	.036	.031	.026		
6.0	.318	.256	.211	.273	.221	.184	.188	.155	.130	.109	.091	.077	.035	.030	.026		
7.0	.311	.249	.206	.267	.216	.179	.185	.151	.127	.107	.089	.076	.035	.029	.025		
8.0	.304	.243	.202	.262	.211	.176	.181	.148	.125	.105	.087	.074	.034	.029	.025		
9.0	.298	.239	.199	.256	.207	.173	.178	.146	.123	.104	.086	.073	.034	.028	.024		
10.0	.292	.235	.196	.252	.204	.171	.175	.143	.122	.102	.085	.073	.033	.028	.024		

C Range: 0 - 360DEG
 C Interval: 30.0DEG
 Test Speed: HIGH
 Temperature:25.3DEG
 Operators:LPC
 Test Date:2021-12-13

γ Range: 0 - 180DEG
 γ Interval: 1.0DEG
 Test System:EVERFINE GO-2000B_V1 SYSTEM V2.0.362
 Humidity:65.0%
 Test Distance:9.200m [K=1.0000]
 Remarks:

UGR(Unified Glare Rating) Table

Test:U:24.00V I:0.2352A P:5.645W PF:1.000 Freq:50.00Hz Lamp Flux:18.6917x1 lm											
NAME: SF21-24V-5050-70-SPI3-RGB-B						TYPE:硅胶			WEIGHT:		
SPEC.:						DIM.: 28mm*11.5mm			SERIAL No.:2021121313		
MFR.: OLYMPIA						SUR.:1*0.016			Shielding Angle:		
ceiling/cavity	0.7	0.7	0.5	0.5	0.3	0.7	0.7	0.5	0.5	0.3	
walls	0.5	0.3	0.5	0.3	0.3	0.5	0.3	0.5	0.3	0.3	
working plane	0.2	0.2	0.2	0.2	0.2	0.2	0.2	0.2	0.2	0.2	
Room dimensions	Viewed crosswise					Viewed endwise					
x = 2H y = 2H	22.1	23.5	22.7	24.0	24.7	19.4	20.8	20.0	21.3	22.0	
	3H	25.0	26.2	25.5	26.8	27.5	20.8	22.0	21.4	22.6	23.3
	4H	26.6	27.7	27.2	28.3	29.0	21.3	22.5	21.9	23.1	23.8
	6H	28.3	29.4	29.0	30.1	30.8	21.6	22.7	22.2	23.3	24.0
	8H	29.3	30.4	30.0	31.0	31.8	21.6	22.7	22.2	23.3	24.1
	12H	30.4	31.5	31.1	32.1	32.9	21.6	22.6	22.2	23.3	24.0
4H	2H	22.7	23.8	23.3	24.4	25.1	20.8	21.9	21.4	22.5	23.2
	3H	25.7	26.8	26.4	27.4	28.2	22.5	23.5	23.1	24.2	24.9
	4H	27.5	28.5	28.2	29.1	29.9	23.3	24.2	23.9	24.9	25.7
	6H	29.5	30.4	30.2	31.1	31.9	23.8	24.6	24.5	25.3	26.2
	8H	30.6	31.4	31.3	32.1	33.0	24.0	24.7	24.7	25.5	26.3
	12H	31.9	32.6	32.6	33.4	34.2	24.1	24.8	24.8	25.5	26.4
8H	4H	27.9	28.7	28.6	29.4	30.2	24.6	25.4	25.3	26.1	26.9
	6H	30.2	30.8	30.9	31.6	32.5	25.6	26.3	26.4	27.0	27.9
	8H	31.5	32.1	32.3	32.9	33.7	26.1	26.7	26.8	27.4	28.3
	12H	33.0	33.6	33.8	34.3	35.2	26.4	26.9	27.2	27.7	28.6
12H	4H	27.9	28.6	28.6	29.3	30.2	25.0	25.8	25.7	26.5	27.3
	6H	30.3	30.9	31.0	31.6	32.5	26.3	26.9	27.1	27.7	28.6
	8H	31.7	32.3	32.5	33.0	33.9	27.0	27.5	27.8	28.3	29.2
Variations with the observer position at spacings:											
S = 1.0H	+ 0.1 / - 0.1					+ 0.1 / - 0.1					
1.5H	+ 0.2 / - 0.2					+ 0.2 / - 0.3					
2.0H	+ 0.3 / - 0.3					+ 0.3 / - 0.4					

CIE Pub.117, 18.69 lm Total Lamp Luminous Flux Correct (8log(F/F0) = -13.8)

C Range: 0 - 360DEG
C Interval: 30.0DEG
Test Speed: HIGH
Temperature:25.3DEG
Operators:LPC
Test Date:2021-12-13

γ Range: 0 - 180DEG
γ Interval: 1.0DEG
Test System:EVERFINE GO-2000B_V1 SYSTEM V2.0.362
Humidity:65.0%
Test Distance:9.200m [K=1.0000]
Remarks:

UTILIZATION FACTORS TABLE

Test:U:24.00V I:0.2352A P:5.645W PF:1.000 Freq:50.00Hz Lamp Flux:18.6917x1 lm		
NAME: SF21-24V-5050-70-SPI3-RGB-B	TYPE: 硅胶	WEIGHT:
SPEC.:	DIM.: 28mm*11.5mm	SERIAL No.:2021121313
MFR.: OLYMPIA	SUR.:1*0.016	Shielding Angle:

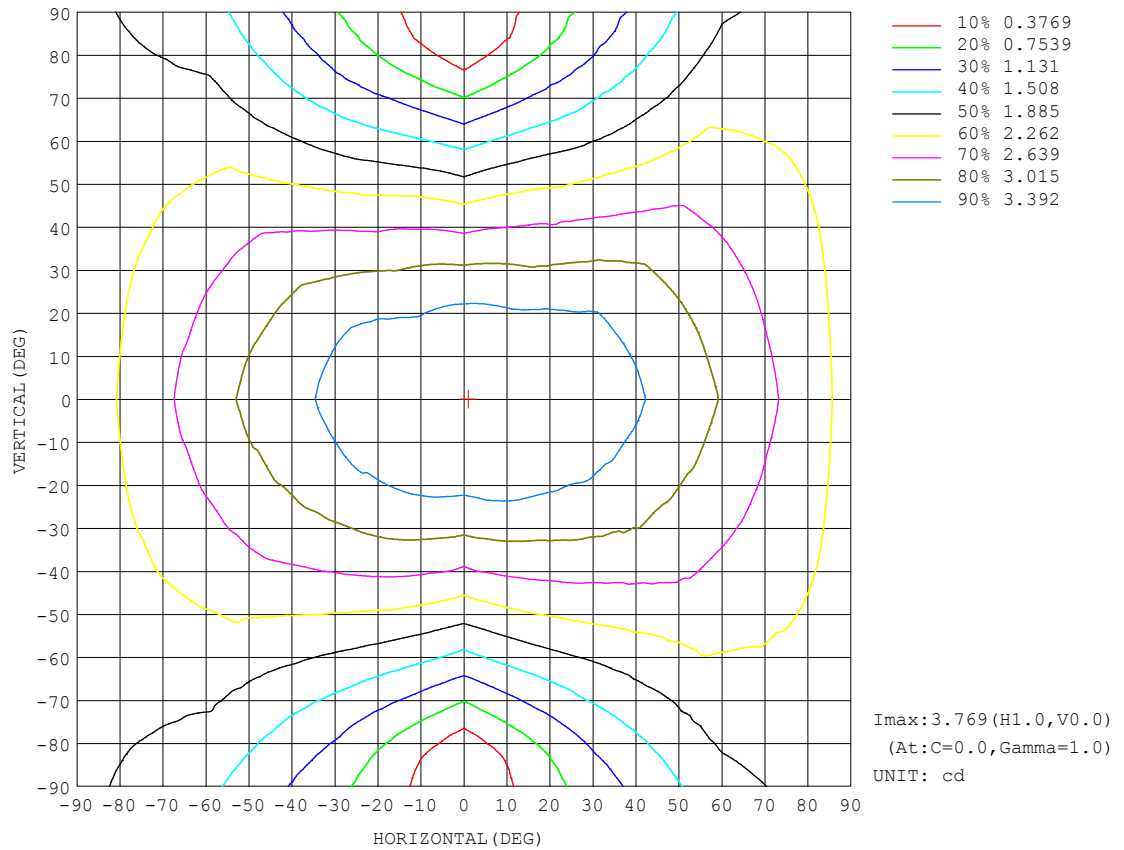
REFLECTANCE										
Ceiling	0.8	0.8	0.8	0.7	0.7	0.7	0.5	0.5	0.5	0
Walls	0.7	0.5	0.3	0.7	0.5	0.3	0.7	0.5	0.3	0
Working plane	0.2	0.2	0.2	0.2	0.2	0.2	0.2	0.2	0.2	0
ROOM INDEX	UTILIZATION FACTORS (PERCENT) $k(RI) \times RCR = 5$									
$k = 0.60$	46	34	27	45	33	26	43	32	26	19
0.80	55	42	34	54	42	34	51	40	33	25
1.00	63	50	42	61	49	41	57	49	40	31
1.25	70	57	49	67	56	48	63	53	46	36
1.50	75	63	54	72	61	53	67	57	50	39
2.00	82	71	63	79	69	61	73	64	58	45
2.50	87	77	68	83	74	66	76	69	63	49
3.00	91	81	74	87	78	71	80	73	67	53
4.00	96	87	81	91	84	78	83	78	73	57
5.00	99	91	85	94	88	82	86	81	76	60
ROOM INDEX	UF (total)									Direct
According to DIN EN 13032-2 2004			Suspended					SHRNOM = 1.25		

C Range: 0 - 360DEG
C Interval: 30.0DEG
Test Speed: HIGH
Temperature:25.3DEG
Operators:LPC
Test Date:2021-12-13

γ Range: 0 - 180DEG
 γ Interval: 1.0DEG
Test System:EVERFINE GO-2000B_V1 SYSTEM V2.0.362
Humidity:65.0%
Test Distance:9.200m [K=1.0000]
Remarks:

ISOCANDELA DIAGRAM

Test:U:24.00V I:0.2352A P:5.645W PF:1.000 Freq:50.00Hz Lamp Flux:18.6917x1 lm		
NAME: SF21-24V-5050-70-SPI3-RGB-B	TYPE: 硅胶	WEIGHT:
SPEC.:	DIM.: 28mm*11.5mm	SERIAL No.:2021121313
MFR.: OLYMPIA	SUR.:1*0.016	Shielding Angle:

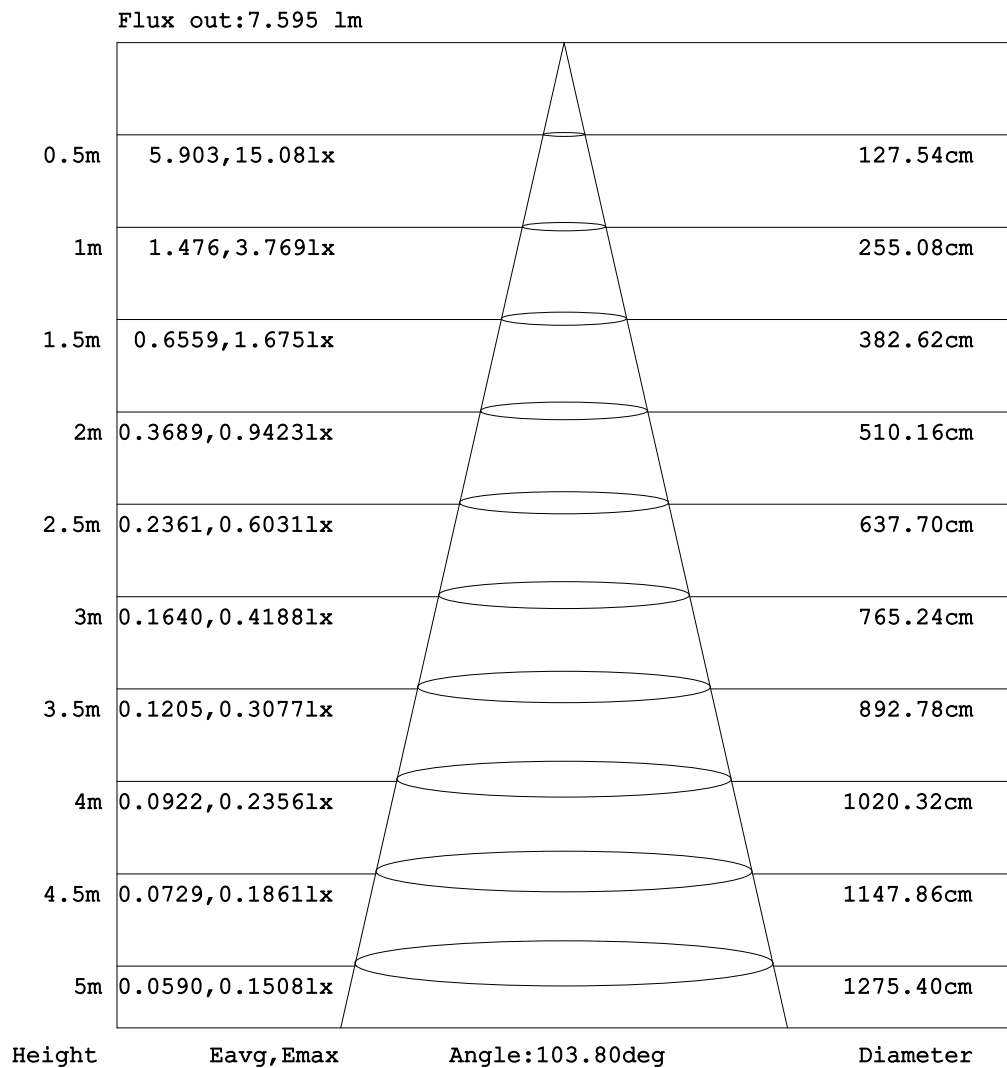


C Range: 0 - 360DEG
C Interval: 30.0DEG
Test Speed: HIGH
Temperature: 25.3DEG
Operators: LPC
Test Date: 2021-12-13

γ Range: 0 - 180DEG
 γ Interval: 1.0DEG
Test System: EVERFINE GO-2000B_V1 SYSTEM V2.0.362
Humidity: 65.0%
Test Distance: 9.200m [K=1.0000]
Remarks:

AAI Figure

Test:U:24.00V I:0.2352A P:5.645W PF:1.000 Freq:50.00Hz Lamp Flux:18.6917x1 lm		
NAME: SF21-24V-5050-70-SPI3-RGB-B	TYPE: 硅胶	WEIGHT:
SPEC.:	DIM.: 28mm*11.5mm	SERIAL No.:2021121313
MFR.: OLYMPIA	SUR.:1*0.016	Shielding Angle:



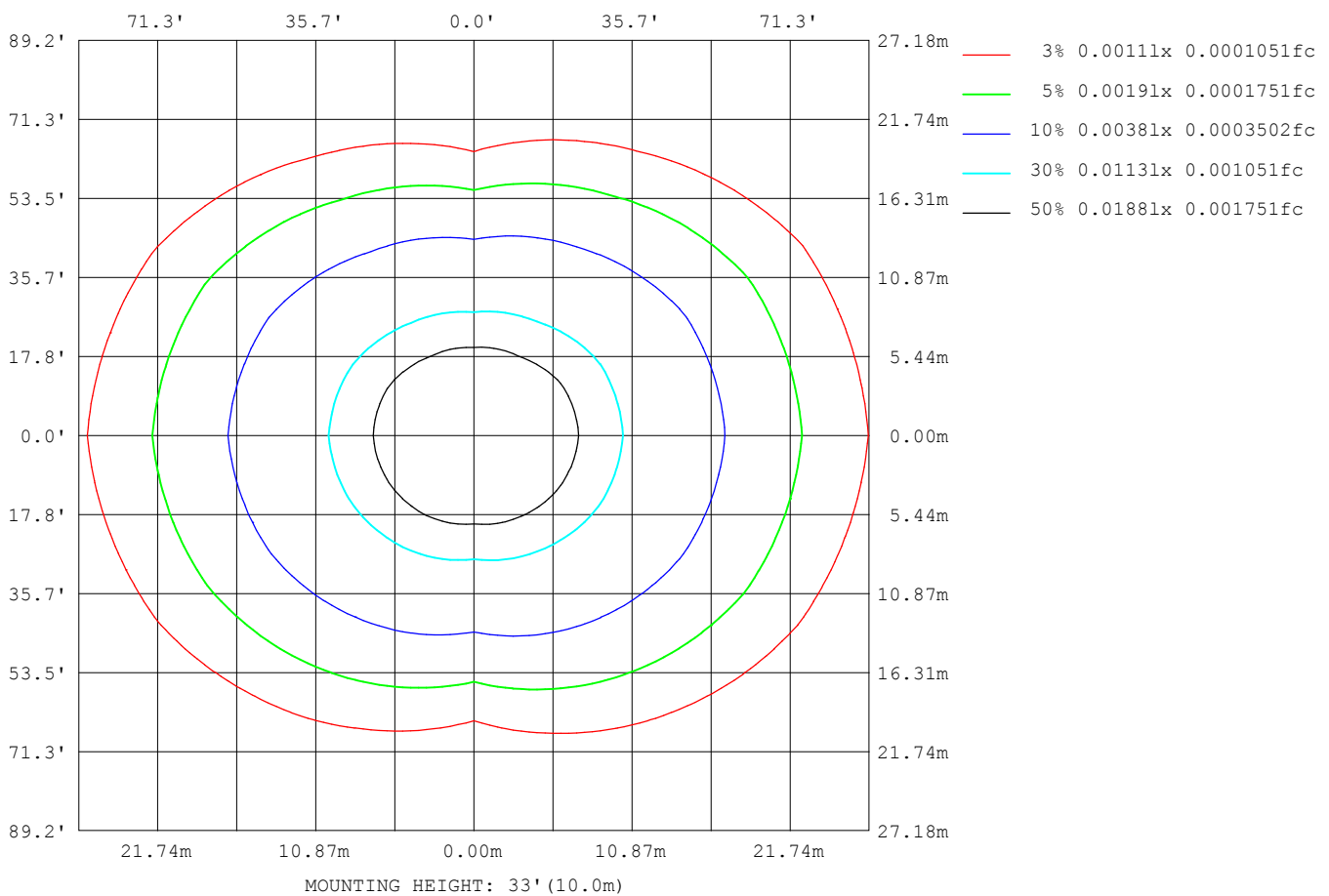
Note: The Curves indicate the illuminated area and the average illumination when the luminaire is at different distance.

C Range: 0 - 360DEG
 C Interval: 30.0DEG
 Test Speed: HIGH
 Temperature: 25.3DEG
 Operators: LPC
 Test Date: 2021-12-13

γ Range: 0 - 180DEG
 γ Interval: 1.0DEG
 Test System: EVERFINE GO-2000B_V1 SYSTEM V2.0.362
 Humidity: 65.0%
 Test Distance: 9.200m [K=1.0000]
 Remarks:

ISOLUX DIAGRAM

Test:U:24.00V I:0.2352A P:5.645W PF:1.000 Freq:50.00Hz Lamp Flux:18.6917x1 lm		
NAME: SF21-24V-5050-70-SPI3-RGB-B	TYPE: 硅胶	WEIGHT:
SPEC.:	DIM.: 28mm*11.5mm	SERIAL No.:2021121313
MFR.: OLYMPIA	SUR.:1*0.016	Shielding Angle:



C Range: 0 - 360DEG
 C Interval: 30.0DEG
 Test Speed: HIGH
 Temperature: 25.3DEG
 Operators: LPC
 Test Date: 2021-12-13

γ Range: 0 - 180DEG
 γ Interval: 1.0DEG
 Test System: EVERFINE GO-2000B_V1 SYSTEM V2.0.362
 Humidity: 65.0%
 Test Distance: 9.200m [K=1.0000]
 Remarks:

LED Avg.L Report

Test:U:24.00V I:0.2352A P:5.645W PF:1.000 Freq:50.00Hz Lamp Flux:18.6917x1 lm		
NAME: SF21-24V-5050-70-SPI3-RGB-B	TYPE:硅胶	WEIGHT:
SPEC.:	DIM.: 28mm*11.5mm	SERIAL No.:2021121313
MFR.: OLYMPIA	SUR.:1*0.016	Shielding Angle:

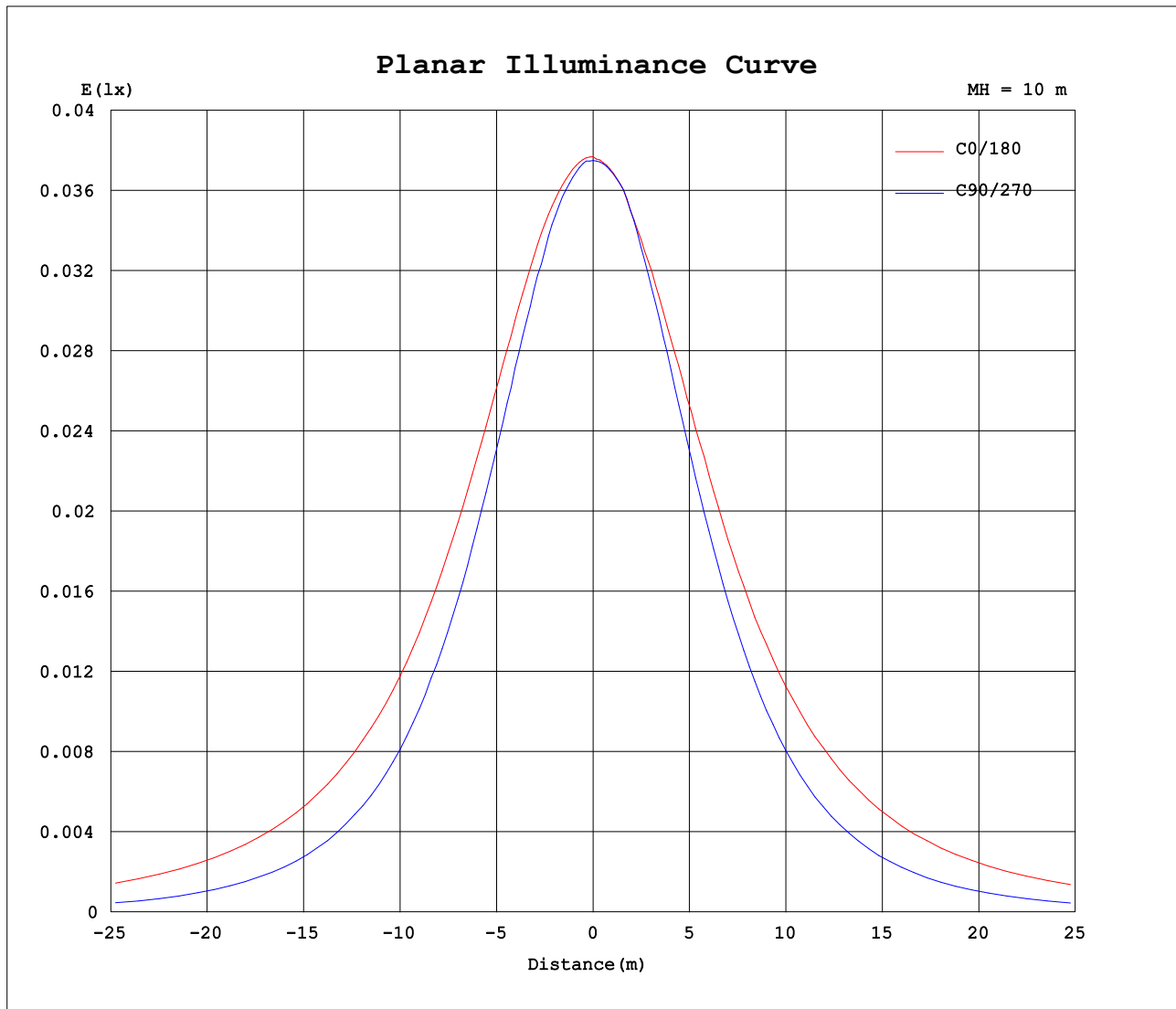
AvgL	cd/m2
L_0~180 (65) av	411
L_0~180 (75) av	607
L_0~180 (85) av	1586
L_90~270 (65) av	158
L_90~270 (75) av	112
L_90~270 (85) av	18
L_45 (65) av	314
L_45 (75) av	429
L_45 (85) av	1053

Standard: GB/T 29293-2012

C Range: 0 - 360DEG
C Interval: 30.0DEG
Test Speed: HIGH
Temperature:25.3DEG
Operators:LPC
Test Date:2021-12-13

γ Range: 0 - 180DEG
γ Interval: 1.0DEG
Test System:EVERFINE GO-2000B_V1 SYSTEM V2.0.362
Humidity:65.0%
Test Distance:9.200m [K=1.0000]
Remarks:

Planar Illuminance Curve



C Range: 0 - 360DEG
C Interval: 30.0DEG
Test Speed: HIGH
Temperature: 25.3DEG
Operators: LPC
Test Date: 2021-12-13

γ Range: 0 - 180DEG
 γ Interval: 1.0DEG
Test System: EVERFINE GO-2000B_V1 SYSTEM V2.0.362
Humidity: 65.0%
Test Distance: 9.200m [K=1.0000]
Remarks:

LUMINOUS DISTRIBUTION INTENSITY DATA

Test:U:24.00V I:0.2352A P:5.645W PF:1.000 Freq:50.00Hz Lamp Flux:18.6917x1 lm		
NAME: SF21-24V-5050-70-SPI3-RGB-B	TYPE: 硅胶	WEIGHT:
SPEC.:	DIM.: 28mm*11.5mm	SERIAL No.:2021121313
MFR.: OLYMPIA	SUR.:1*0.016	Shielding Angle:

Table--1

UNIT: cd

C (DEG) γ (DEG)	0	30	60	90	120	150	180	210	240	270	300	330						
0	3.77	3.76	3.75	3.75	3.75	3.75	3.77	3.76	3.75	3.75	3.75	3.75						
5	3.77	3.76	3.75	3.73	3.74	3.74	3.75	3.76	3.76	3.75	3.74	3.77						
10	3.76	3.74	3.73	3.69	3.73	3.68	3.72	3.75	3.67	3.72	3.69	3.76						
15	3.76	3.70	3.70	3.59	3.64	3.62	3.66	3.68	3.57	3.61	3.61	3.75						
20	3.72	3.65	3.59	3.46	3.54	3.56	3.61	3.60	3.44	3.46	3.50	3.67						
25	3.67	3.56	3.44	3.29	3.39	3.49	3.56	3.51	3.29	3.28	3.35	3.58						
30	3.61	3.47	3.28	3.10	3.24	3.38	3.50	3.41	3.14	3.07	3.17	3.52						
35	3.54	3.37	3.08	2.84	3.07	3.24	3.38	3.29	2.96	2.82	3.00	3.42						
40	3.44	3.26	2.90	2.60	2.87	3.10	3.27	3.15	2.76	2.56	2.80	3.31						
45	3.33	3.11	2.70	2.30	2.65	2.97	3.19	3.02	2.55	2.28	2.62	3.18						
50	3.24	2.96	2.49	2.00	2.42	2.84	3.10	2.88	2.33	1.99	2.42	3.04						
55	3.12	2.85	2.27	1.70	2.19	2.68	2.96	2.73	2.09	1.68	2.21	2.90						
60	2.99	2.68	2.04	1.40	1.96	2.53	2.85	2.57	1.87	1.38	1.97	2.75						
65	2.86	2.52	1.81	1.08	1.73	2.37	2.70	2.42	1.64	1.07	1.74	2.59						
70	2.72	2.37	1.59	0.77	1.52	2.20	2.57	2.26	1.43	0.76	1.53	2.44						
75	2.59	2.22	1.40	0.46	1.32	2.06	2.44	2.11	1.23	0.46	1.34	2.29						
80	2.44	2.07	1.22	0.20	1.15	1.90	2.29	1.96	1.05	0.20	1.16	2.14						
85	2.28	1.91	1.06	0.04	0.99	1.76	2.14	1.80	0.91	0.01	1.00	2.00						
90	2.12	1.76	0.94	0.03	0.86	1.60	1.98	1.66	0.77	0.00	0.87	1.84						
95	1.96	1.61	0.82	0.03	0.76	1.48	1.82	1.53	0.69	0.00	0.77	1.69						
100	1.76	1.36	0.74	0.03	0.69	1.24	1.65	1.28	0.60	0.00	0.69	1.41						
105	1.60	1.27	0.64	0.03	0.53	1.17	1.50	1.21	0.49	0.00	0.57	1.34						
110	1.47	1.17	0.61	0.04	0.50	1.02	1.37	1.07	0.43	0.00	0.56	1.23						
115	1.35	1.07	0.57	0.04	0.48	0.92	1.18	1.00	0.37	0.00	0.49	1.14						
120	1.23	1.00	0.53	0.04	0.42	0.85	1.09	0.90	0.36	0.00	0.45	1.06						
125	1.13	0.92	0.46	0.04	0.41	0.78	0.99	0.81	0.33	0.00	0.37	0.98						
130	1.02	0.80	0.42	0.04	0.36	0.69	0.88	0.73	0.29	0.00	0.31	0.86						
135	0.92	0.63	0.37	0.05	0.33	0.60	0.76	0.66	0.28	0.00	0.28	0.70						
140	0.82	0.53	0.34	0.05	0.31	0.52	0.62	0.54	0.25	0.00	0.22	0.54						
145	0.72	0.44	0.31	0.03	0.28	0.44	0.51	0.49	0.21	0.00	0.20	0.44						
150	0.63	0.36	0.27	0.03	0.25	0.35	0.43	0.41	0.20	0.00	0.18	0.35						
155	0.53	0.29	0.25	0.03	0.21	0.29	0.31	0.34	0.15	0.00	0.17	0.29						
160	0.43	0.23	0.24	0.03	0.19	0.23	0.26	0.28	0.12	0.00	0.16	0.22						
165	0.35	0.19	0.22	0.03	0.15	0.19	0.22	0.18	0.09	0.00	0.15	0.19						
170	0.18	0.14	0.20	0.03	0.11	0.11	0.12	0.17	0.06	0.00	0.14	0.17						
175	0.13	0.13	0.17	0.03	0.05	0.05	0.05	0.13	0.05	0.00	0.12	0.16						
180	0.05	0.05	0.05	0.03	0.05	0.04	0.04	0.05	0.05	0.05	0.04	0.05						

C Range: 0 - 360DEG
C Interval: 30.0DEG
Test Speed: HIGH
Temperature:25.3DEG
Operators:LPC
Test Date:2021-12-13

γ Range: 0 - 180DEG
γ Interval: 1.0DEG
Test System:EVERFINE GO-2000B_V1 SYSTEM V2.0.362
Humidity:65.0%
Test Distance:9.200m [K=1.0000]
Remarks:

Photometric Data Table [cd]

G/C	0.0	30.0	60.0	90.0	120.0	150.0	180.0	210.0	240.0	270.0
0.0	3.769	3.764	3.754	3.749	3.749	3.754	3.769	3.764	3.754	3.749
3.0	3.769	3.764	3.754	3.749	3.749	3.744	3.754	3.764	3.754	3.749
6.0	3.767	3.758	3.745	3.726	3.740	3.749	3.748	3.759	3.749	3.744
9.0	3.764	3.744	3.735	3.704	3.730	3.689	3.739	3.754	3.699	3.739
12.0	3.762	3.734	3.726	3.664	3.709	3.659	3.689	3.724	3.638	3.684
15.0	3.759	3.699	3.699	3.588	3.644	3.623	3.659	3.679	3.568	3.609
18.0	3.734	3.659	3.629	3.513	3.579	3.573	3.633	3.634	3.493	3.528
21.0	3.714	3.613	3.559	3.427	3.508	3.533	3.593	3.588	3.412	3.433
24.0	3.684	3.573	3.473	3.332	3.423	3.493	3.573	3.533	3.327	3.317
27.0	3.649	3.523	3.373	3.206	3.337	3.432	3.528	3.483	3.246	3.197
30.0	3.614	3.473	3.277	3.095	3.237	3.382	3.498	3.413	3.136	3.066
33.0	3.568	3.417	3.162	2.935	3.131	3.292	3.427	3.342	3.030	2.925
36.0	3.518	3.342	3.041	2.794	3.026	3.211	3.362	3.262	2.919	2.770
39.0	3.458	3.277	2.931	2.633	2.910	3.126	3.302	3.177	2.804	2.614
42.0	3.398	3.196	2.820	2.472	2.785	3.045	3.256	3.091	2.693	2.448
45.0	3.332	3.111	2.699	2.296	2.654	2.970	3.186	3.016	2.548	2.282
48.0	3.272	3.030	2.579	2.120	2.518	2.895	3.126	2.930	2.432	2.106
51.0	3.212	2.940	2.443	1.959	2.378	2.804	3.075	2.845	2.281	1.925
54.0	3.141	2.855	2.312	1.759	2.232	2.714	3.005	2.759	2.135	1.749
57.0	3.066	2.774	2.182	1.573	2.096	2.618	2.930	2.669	1.995	1.568
60.0	2.991	2.683	2.041	1.402	1.956	2.528	2.854	2.573	1.869	1.378
63.0	2.910	2.608	1.905	1.206	1.820	2.432	2.769	2.478	1.728	1.187
66.0	2.835	2.492	1.765	1.015	1.694	2.327	2.688	2.383	1.598	1.001
69.0	2.749	2.397	1.639	0.8287	1.568	2.236	2.603	2.292	1.477	0.8146
72.0	2.669	2.307	1.528	0.6428	1.438	2.141	2.522	2.197	1.341	0.6339
75.0	2.589	2.216	1.403	0.4619	1.322	2.055	2.442	2.111	1.231	0.4629
78.0	2.503	2.131	1.292	0.2861	1.207	1.965	2.352	2.016	1.110	0.2969
81.0	2.413	2.050	1.181	0.1404	1.111	1.889	2.256	1.935	1.015	0.1511
84.0	2.317	1.955	1.091	0.0452	1.016	1.794	2.171	1.840	0.9246	0.0256
87.0	2.227	1.854	1.010	0.0251	0.9351	1.698	2.080	1.749	0.8391	0.0051
90.0	2.121	1.759	0.9400	0.0251	0.8597	1.603	1.980	1.664	0.7689	0
93.0	2.021	1.668	0.8647	0.0251	0.7993	1.518	1.884	1.588	0.7085	0
96.0	1.925	1.578	0.8093	0.0251	0.7490	1.442	1.799	1.508	0.6834	0
99.0	1.815	1.412	0.7641	0.0251	0.6988	1.261	1.663	1.287	0.6130	0
102.0	1.694	1.327	0.7188	0.0251	0.6288	1.231	1.583	1.257	0.5321	0
105.0	1.604	1.266	0.6433	0.0251	0.5328	1.166	1.503	1.206	0.4926	0
108.0	1.533	1.221	0.6283	0.0352	0.5028	1.110	1.417	1.146	0.4532	0
111.0	1.448	1.161	0.5982	0.0352	0.4946	1.000	1.341	1.055	0.3970	0
114.0	1.367	1.095	0.5771	0.0352	0.4825	0.9397	1.206	1.005	0.3719	0
117.0	1.297	1.045	0.5596	0.0352	0.4425	0.9044	1.151	0.9601	0.3688	0
120.0	1.227	1.000	0.5279	0.0352	0.4173	0.8493	1.090	0.8998	0.3627	0
123.0	1.166	0.9448	0.4877	0.0402	0.4112	0.8140	1.020	0.8494	0.3506	0
126.0	1.101	0.9144	0.4524	0.0402	0.3872	0.7689	0.9647	0.7942	0.3115	0
129.0	1.046	0.8340	0.4222	0.0402	0.3620	0.7085	0.9242	0.7490	0.2948	0
132.0	0.9852	0.7536	0.3972	0.0402	0.3419	0.6683	0.8442	0.7137	0.2898	0
135.0	0.9249	0.6331	0.3720	0.0452	0.3319	0.5980	0.7638	0.6585	0.2848	0
138.0	0.8596	0.5777	0.3519	0.0452	0.3116	0.5527	0.6879	0.6033	0.2811	0
141.0	0.7994	0.5175	0.3318	0.0452	0.3016	0.5023	0.6027	0.5278	0.2411	0
144.0	0.7390	0.4572	0.3067	0.0302	0.2865	0.4372	0.5375	0.5076	0.2161	0
147.0	0.6887	0.4169	0.2965	0.0302	0.2765	0.3869	0.4573	0.4625	0.2061	0
150.0	0.6284	0.3568	0.2715	0.0302	0.2463	0.3518	0.4319	0.4123	0.1958	0
153.0	0.5731	0.3114	0.2584	0.0302	0.2213	0.3165	0.3566	0.3620	0.1658	0
156.0	0.5228	0.2814	0.2477	0.0302	0.2061	0.2765	0.2912	0.3268	0.1407	0
159.0	0.4525	0.2311	0.2395	0.0302	0.1910	0.2511	0.2686	0.2966	0.1256	0
162.0	0.4022	0.2011	0.2313	0.0302	0.1610	0.2060	0.2461	0.2316	0.1105	0
165.0	0.3520	0.1858	0.2222	0.0302	0.1459	0.1858	0.2235	0.1810	0.0903	0
168.0	0.2011	0.1607	0.2101	0.0302	0.1256	0.1346	0.1355	0.1724	0.0652	0
171.0	0.1710	0.1357	0.1920	0.0302	0.1006	0.1014	0.1103	0.1637	0.0502	0
174.0	0.1408	0.1207	0.1759	0.0351	0.0604	0.0602	0.0602	0.1408	0.0452	0
177.0	0.1055	0.0851	0.1160	0.0251	0.0503	0.0352	0.0452	0.0956	0.0452	0.0249
180.0	0.0452	0.0503	0.0503	0.0251	0.0452	0.0352	0.0352	0.0503	0.0503	0.0452
G/C	300.0	330.0								
0.0	3.749	3.754								
3.0	3.754	3.769								
6.0	3.739	3.766								
9.0	3.714	3.762								
12.0	3.669	3.758								
15.0	3.613	3.754								
18.0	3.553	3.704								
21.0	3.472	3.659								
24.0	3.387	3.589								
27.0	3.282	3.568								
30.0	3.171	3.518								

C Range: 0 - 360DEG
 C Interval: 30.0DEG
 Test Speed: HIGH
 Temperature: 25.3DEG
 Operators: LPC
 Test Date: 2021-12-13

γ Range: 0 - 180DEG
 γ Interval: 1.0DEG
 Test System: EVERFINE GO-2000B_V1 SYSTEM V2.0.362
 Humidity: 65.0%
 Test Distance: 9.200m [K=1.0000]
 Remarks:

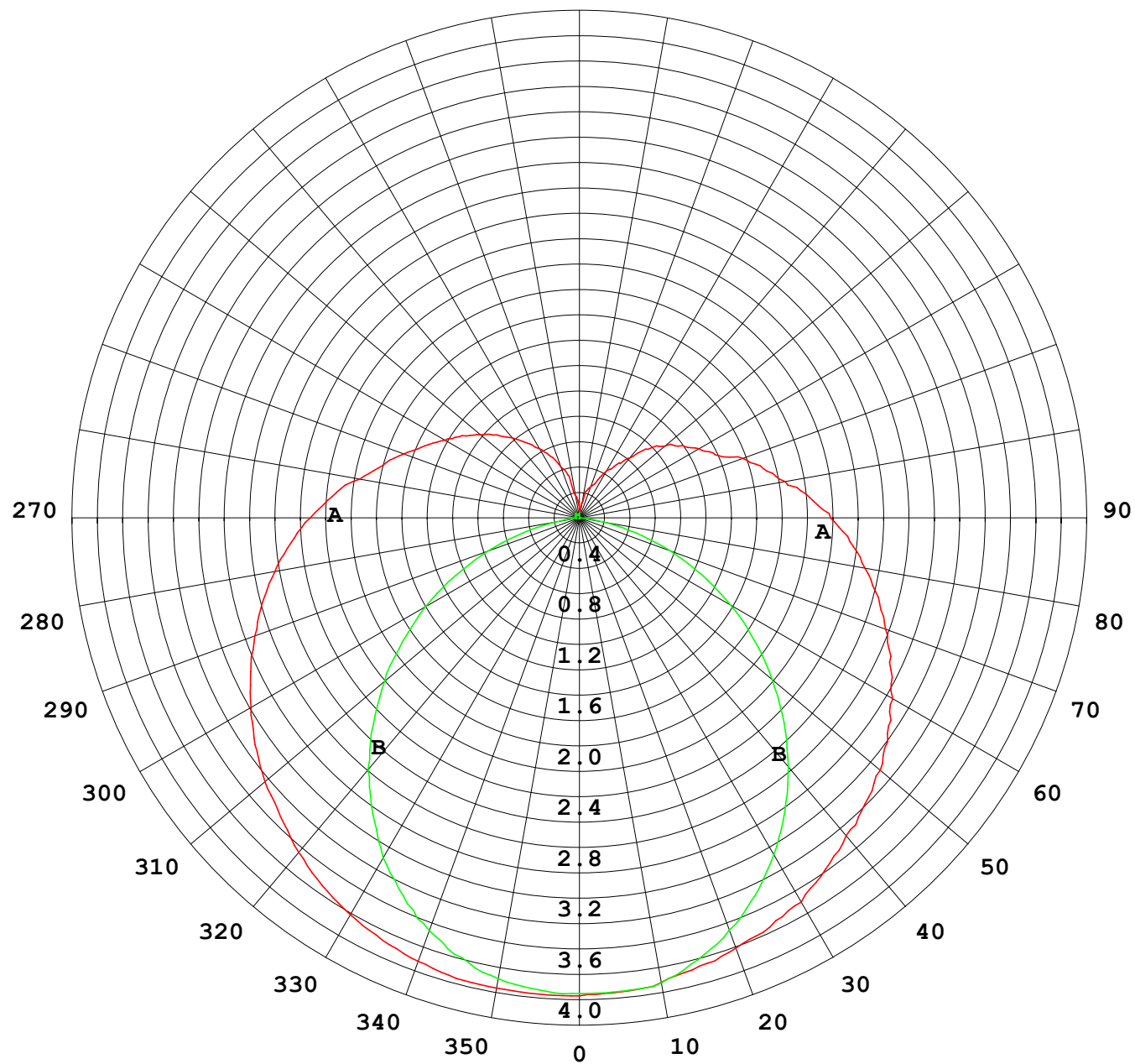
Photometric Data Table [cd]

33.0	3.060	3.453
36.0	2.950	3.403
39.0	2.844	3.337
42.0	2.734	3.257
45.0	2.618	3.182
48.0	2.507	3.091
51.0	2.377	3.006
54.0	2.246	2.925
57.0	2.115	2.835
60.0	1.975	2.749
63.0	1.834	2.654
66.0	1.703	2.563
69.0	1.573	2.473
72.0	1.467	2.378
75.0	1.337	2.292
78.0	1.241	2.201
81.0	1.120	2.116
84.0	1.030	2.026
87.0	0.9498	1.930
90.0	0.8743	1.845
93.0	0.8088	1.754
96.0	0.7588	1.659
99.0	0.7035	1.464
102.0	0.6678	1.392
105.0	0.5728	1.337
108.0	0.5578	1.277
111.0	0.5327	1.206
114.0	0.5124	1.151
117.0	0.4674	1.101
120.0	0.4472	1.055
123.0	0.3969	1.005
126.0	0.3615	0.9650
129.0	0.3215	0.8999
132.0	0.2914	0.7844
135.0	0.2763	0.7038
138.0	0.2311	0.5633
141.0	0.2177	0.5278
144.0	0.2052	0.4475
147.0	0.1857	0.4122
150.0	0.1787	0.3469
153.0	0.1717	0.3218
156.0	0.1647	0.2716
159.0	0.1578	0.2262
162.0	0.1516	0.2061
165.0	0.1457	0.1885
168.0	0.1457	0.1810
171.0	0.1306	0.1710
174.0	0.1305	0.1597
177.0	0.0651	0.1359
180.0	0.0352	0.0452

C Range: 0 - 360DEG
C Interval: 30.0DEG
Test Speed: HIGH
Temperature:25.3DEG
Operators:LPC
Test Date:2021-12-13

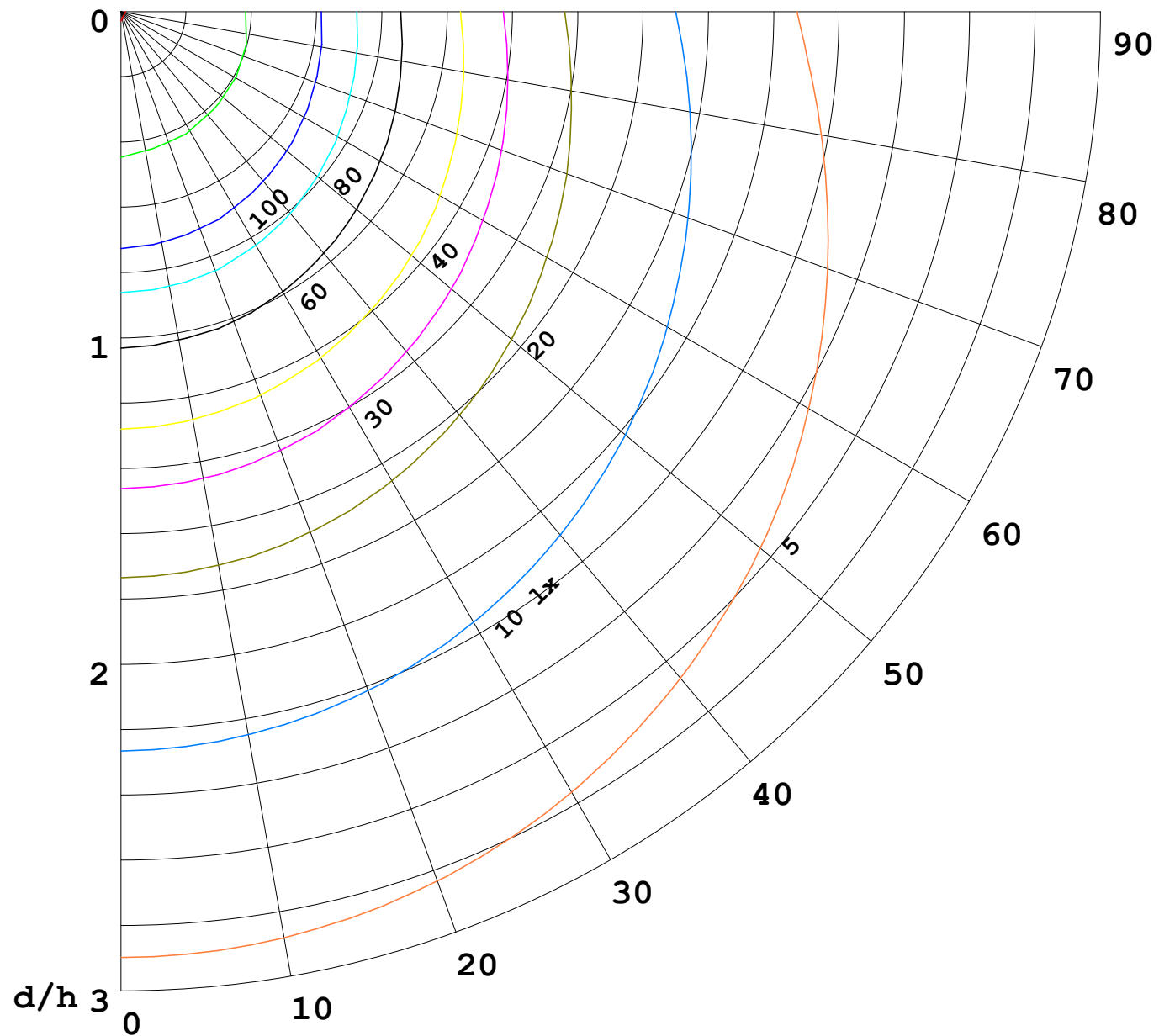
γ Range: 0 - 180DEG
γ Interval: 1.0DEG
Test System:EVERFINE GO-2000B_V1 SYSTEM V2.0.362
Humidity:65.0%
Test Distance:9.200m [K=1.0000]
Remarks:

I (cd)



1000 lm

$\kappa = 1$



F = 5000 lm
 K = 0.7
 Hcc = 0.0 m
 Hfc = 0.0 m
 Eave = 100 lx

	Pcc	Pw	Pfc
—	70	50	30
—	50	30	20

