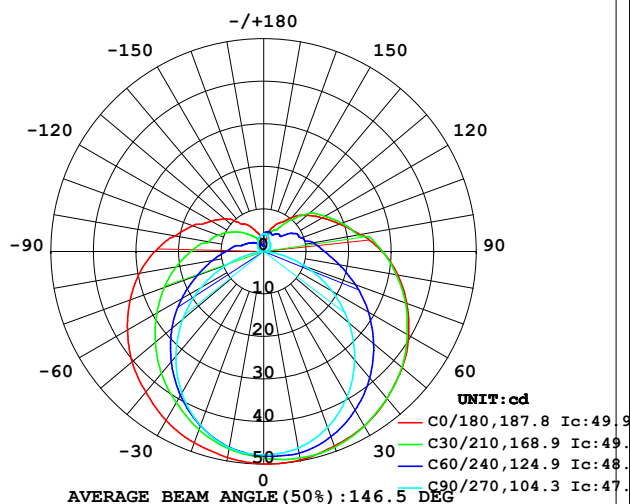


LUMINAIRE PHOTOMETRIC TEST REPORT

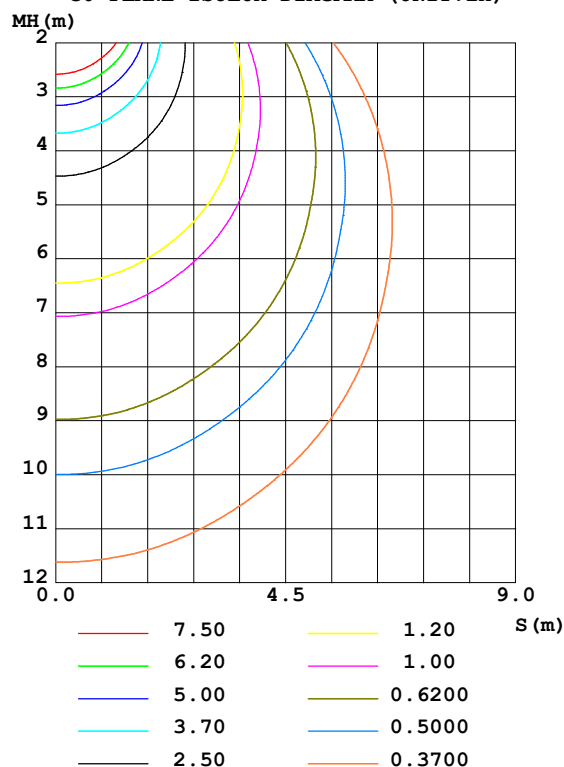
Test:U:24.00V I:0.6002A P:14.40W PF:1.000 Freq:50.00Hz Lamp Flux:245.474x1 lm		
NAME: SF21-24V-5050-56-DMX4SM-RGBW(4000K)	TYPE: 硅胶	WEIGHT:
SPEC.:	DIM.: 28mm*11.5mm	SERIAL No.:2021121510
MFR.: OLYMPIA	SUR.:1*0.016	Shielding Angle:

DATA OF LAMP		PHOTOMETRIC DATA Eff: 17.04 lm/W			
MODEL	5050	I _{max} (cd)	49.99	S/MH (C0/180)	1.38
NOMINAL POWER(W)	15	LOR(%)	100.0	S/MH (C90/270)	1.20
RATED VOLTAGE(V)	24	TOTAL FLUX(lm)	245.47	η UP,DN(C0-180)	11.8,38.7
NOMINAL FLUX(lm)	245.474	CIE CLASS	SEMI-D.	η UP,DN(C180-360)	11.6,38.0
LAMPS INSIDE	1	η up (%)	23.3	CIBSE SHR NOM	1.50
TEST VOLTAGE(V)	24	η down (%)	76.7	CIBSE SHR MAX	1.55

LUMINOUS INTENSITY DISTRIBUTION DIAGRAM



C0 PLANE ISOLUX DIAGRAM (UNIT: lx)



C Range: 0 - 360DEG
 C Interval: 30.0DEG
 Test Speed: HIGH
 Temperature: 25.3DEG
 Operators: LPC
 Test Date: 2021-12-15

γ Range: 0 - 180DEG
 γ Interval: 1.0DEG
 Test System: EVERFINE GO-2000B_V1 SYSTEM V2.0.362
 Humidity: 65.0%
 Test Distance: 9.200m [K=1.0000]
 Remarks:

ZONAL FLUX DIAGRAM

ZONAL FLUX DIAGRAM:

γ	C0	C45	C90	C135	C180	C225	C270	C315	γ	Φ zone	Φ total	%lum, lamp
10	49.76	48.72	46.95	46.36	49.18	46.93	46.81	48.00	0- 10	4.584	4.584	1.87,1.87
20	48.65	47.65	43.98	43.59	47.83	44.08	43.51	46.78	10- 20	13.24	17.82	7.26,7.26
30	47.34	45.21	39.34	39.74	45.92	40.08	38.48	44.43	20- 30	20.40	38.22	15.6,15.6
40	45.15	41.94	33.25	35.31	43.12	35.63	32.12	41.30	30- 40	25.42	63.64	25.9,25.9
50	42.53	38.08	26.14	30.46	40.36	30.72	24.86	37.59	40- 50	28.04	91.68	37.4,37.4
60	39.37	33.68	18.46	25.42	36.98	25.64	17.09	33.29	50- 60	28.23	119.9	48.8,48.8
70	35.80	29.24	10.54	20.65	33.39	20.80	9.323	28.95	60- 70	26.27	146.2	59.6,59.6
80	32.06	24.87	3.417	16.43	29.67	16.53	2.628	24.70	70- 80	22.90	169.1	68.9,68.9
90	27.85	21.13	0.7036	13.01	25.61	13.02	0.4973	20.99	80- 90	19.10	188.2	76.7,76.7
100	22.96	17.06	0.7846	10.15	21.16	10.15	0.5924	17.12	90-100	15.89	204.1	83.1,83.1
110	19.01	14.47	1.126	8.160	17.74	8.128	1.015	14.80	100-110	12.49	216.6	88.2,88.2
120	15.88	12.59	1.563	6.406	14.28	6.557	1.477	12.64	110-120	9.869	226.4	92.2,92.2
130	13.28	9.837	1.975	5.171	11.92	5.184	1.814	10.70	120-130	7.506	233.9	95.3,95.3
140	10.50	7.482	2.312	3.767	8.610	3.808	2.115	7.939	130-140	5.185	239.1	97.4,97.4
150	7.866	5.214	2.775	2.615	7.054	2.664	2.633	5.998	140-150	3.185	242.3	98.7,98.7
160	6.022	4.766	3.463	1.612	4.875	1.981	3.357	5.012	150-160	1.921	244.2	99.5,99.5
170	2.579	4.400	4.051	1.292	2.180	1.361	3.879	4.518	160-170	0.9709	245.2	99.9,99.9
180	1.226	3.737	4.222	3.918	1.226	3.822	4.247	3.948	170-180	0.2767	245.5	100,100
DEG	LUMINOUS INTENSITY:cd									UNIT:lm		

Conical surface Flux(90deg): 77.489 lm

%lum = 31.6%

%lamp = 31.6%

Conical surface Flux(120deg): 119.91 lm

%lum = 48.8%

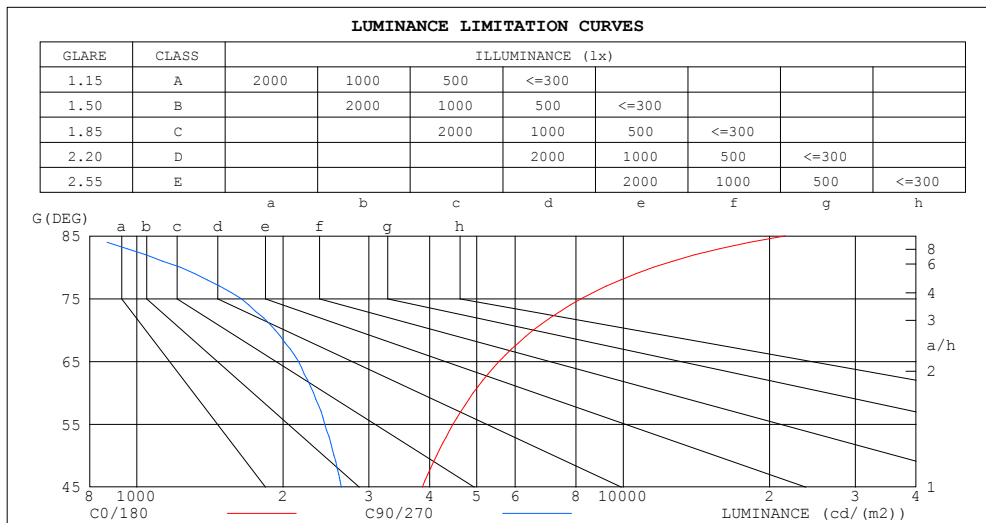
%lamp = 48.8%

C Range: 0 - 360DEG
 C Interval: 30.0DEG
 Test Speed: HIGH
 Temperature:25.3DEG
 Operators:LPC
 Test Date:2021-12-15

γ Range: 0 - 180DEG
 γ Interval: 1.0DEG
 Test System:EVERFINE GO-2000B_V1 SYSTEM V2.0.362
 Humidity:65.0%
 Test Distance:9.200m [K=1.0000]
 Remarks:

LUMINANCE LIMITATION CURVES

Test:U:24.00V I:0.6002A P:14.40W PF:1.000 Freq:50.00Hz Lamp Flux:245.474x1 lm		
NAME: SF21-24V-5050-56-DMX4SM-RGBW(4000K)	TYPE: 硅胶	WEIGHT:
SPEC.:	DIM.: 28mm*11.5mm	SERIAL No.:2021121510
MFR.: OLYMPIA	SUR.:1*0.016	Shielding Angle:



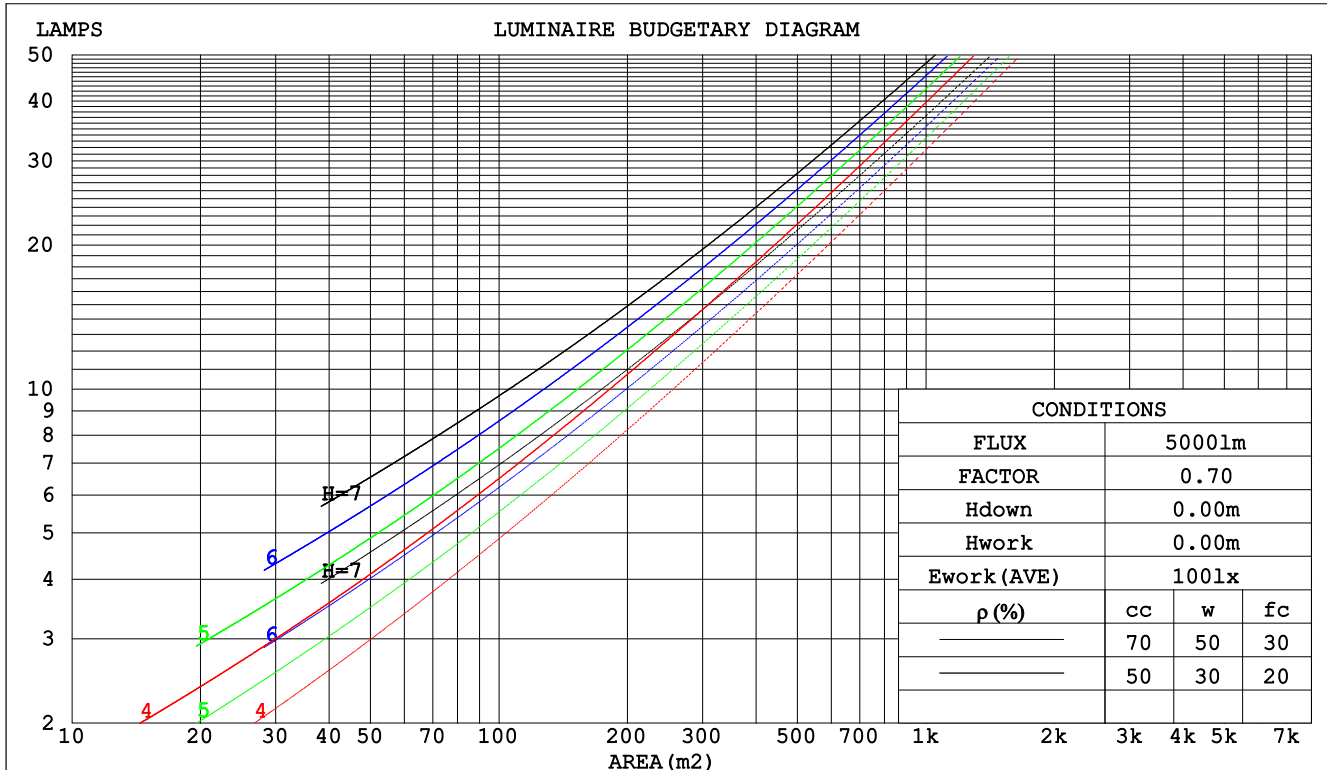
C Range: 0 - 360DEG
C Interval: 30.0DEG
Test Speed: HIGH
Temperature:25.3DEG
Operators:LPC
Test Date:2021-12-15

γ Range: 0 - 180DEG
γ Interval: 1.0DEG
Test System:EVERFINE GO-2000B_V1 SYSTEM V2.0.362
Humidity:65.0%
Test Distance:9.200m [K=1.0000]
Remarks:

CU AND LUMINAIRE BUDGETARY ESTIMATE DIAGRAM

Test:U:24.00V I:0.6002A P:14.40W PF:1.000 Freq:50.00Hz Lamp Flux:245.474x1 lm		
NAME: SF21-24V-5050-56-DMX4SM-RGBW(4000K)	TYPE: 硅胶	WEIGHT:
SPEC.:	DIM.: 28mm*11.5mm	SERIAL No.:2021121510
MFR.: OLYMPIA	SUR.:1*0.016	Shielding Angle:

pcc	80%			70%			50%			30%			10%			0
pw	50%	30%	10%	50%	30%	10%	50%	30%	10%	50%	30%	10%	50%	30%	10%	0
pfc	20%			20%			20%			20%			20%			0
RCR	RCR:Room Cavity Ratio						Coefficients of Utilization(CU)									
0.0	1.13	1.13	1.13	1.08	1.08	1.08	.98	.98	.98	.89	.89	.89	.81	.81	.81	.77
1.0	.94	.89	.84	.90	.85	.80	.81	.77	.74	.73	.70	.67	.66	.63	.61	.57
2.0	.80	.73	.66	.77	.69	.63	.69	.63	.58	.62	.58	.54	.56	.52	.49	.45
3.0	.70	.61	.54	.66	.58	.52	.60	.53	.48	.54	.49	.44	.49	.44	.40	.37
4.0	.61	.52	.45	.58	.50	.43	.53	.46	.40	.48	.42	.37	.43	.38	.34	.31
5.0	.54	.45	.38	.52	.43	.37	.47	.40	.34	.42	.36	.31	.38	.33	.29	.26
6.0	.49	.39	.33	.46	.38	.32	.42	.35	.29	.38	.32	.27	.35	.29	.25	.23
7.0	.44	.35	.28	.42	.33	.28	.38	.31	.26	.35	.29	.24	.31	.26	.22	.20
8.0	.40	.31	.25	.38	.30	.24	.35	.28	.23	.32	.26	.21	.29	.24	.20	.18
9.0	.36	.28	.22	.35	.27	.22	.32	.25	.20	.29	.23	.19	.27	.21	.18	.16
10.0	.33	.25	.20	.32	.25	.19	.29	.23	.18	.27	.21	.17	.25	.20	.16	.14



C Range: 0 - 360DEG
 C Interval: 30.0DEG
 Test Speed: HIGH
 Temperature:25.3DEG
 Operators:LPC
 Test Date:2021-12-15

γ Range: 0 - 180DEG
 γ Interval: 1.0DEG
 Test System:EVERFINE GO-2000B_V1 SYSTEM V2.0.362
 Humidity:65.0%
 Test Distance:9.200m [K=1.0000]
 Remarks:

WEC AND CCEC

Test:U:24.00V I:0.6002A P:14.40W PF:1.000 Freq:50.00Hz Lamp Flux:245.474x1 lm		
NAME: SF21-24V-5050-56-DMX4SM-RGBW(4000K)	TYPE: 硅胶	WEIGHT:
SPEC.:	DIM.: 28mm*11.5mm	SERIAL No.:2021121510
MFR.: OLYMPIA	SUR.:1*0.016	Shielding Angle:

pcc	80%			70%			50%			30%			10%			0	
pw	50%	30%	10%	50%	30%	10%	50%	30%	10%	50%	30%	10%	50%	30%	10%	0	
pfc	20%			20%			20%			20%			20%			0	
RCR	RCR:Room Cavity Ratio						Wall Exitance Coeffcients(WEC)										
0.0																	
1.0	.388	.220	.070	.373	.213	.068	.346	.199	.063	.322	.186	.060	.299	.173	.056		
2.0	.333	.183	.056	.320	.177	.054	.296	.165	.051	.274	.154	.048	.253	.143	.045		
3.0	.295	.157	.047	.284	.152	.046	.262	.142	.043	.241	.132	.041	.222	.123	.038		
4.0	.265	.138	.041	.255	.133	.039	.235	.124	.037	.216	.116	.035	.199	.108	.033		
5.0	.241	.123	.036	.231	.119	.035	.213	.111	.033	.196	.103	.031	.180	.096	.029		
6.0	.221	.111	.032	.212	.107	.031	.195	.100	.029	.179	.093	.027	.165	.087	.026		
7.0	.203	.101	.029	.195	.097	.028	.180	.091	.026	.166	.085	.025	.152	.079	.023		
8.0	.189	.092	.026	.181	.089	.025	.167	.083	.024	.154	.078	.022	.141	.073	.021		
9.0	.176	.085	.024	.169	.082	.023	.156	.077	.022	.144	.072	.021	.132	.067	.019		
10.0	.164	.079	.022	.158	.076	.021	.146	.072	.020	.135	.067	.019	.124	.062	.018		

pcc	80%			70%			50%			30%			10%			0	
pw	50%	30%	10%	50%	30%	10%	50%	30%	10%	50%	30%	10%	50%	30%	10%	0	
pfc	20%			20%			20%			20%			20%			0	
RCR	RCR:Room Cavity Ratio						Ceiling Cavity Exitance Coefficients(CCEC)										
0.0	.368	.368	.368	.315	.315	.315	.215	.215	.215	.123	.123	.123	.039	.039	.039		
1.0	.365	.335	.308	.312	.287	.265	.214	.198	.183	.123	.114	.106	.039	.037	.034		
2.0	.358	.312	.273	.307	.269	.236	.210	.186	.165	.121	.108	.097	.039	.035	.031		
3.0	.351	.296	.252	.301	.255	.219	.206	.177	.153	.119	.104	.090	.038	.034	.030		
4.0	.343	.284	.238	.294	.245	.207	.202	.171	.146	.117	.100	.086	.038	.033	.028		
5.0	.335	.274	.229	.288	.237	.199	.198	.166	.140	.115	.097	.083	.037	.032	.027		
6.0	.328	.266	.222	.282	.230	.193	.195	.161	.137	.113	.095	.081	.036	.031	.027		
7.0	.321	.260	.216	.276	.225	.189	.191	.158	.134	.111	.093	.080	.036	.030	.026		
8.0	.314	.254	.213	.271	.220	.185	.187	.155	.132	.109	.091	.078	.035	.030	.026		
9.0	.308	.249	.210	.266	.216	.183	.184	.152	.130	.107	.090	.077	.035	.029	.026		
10.0	.302	.245	.207	.261	.213	.181	.181	.150	.128	.105	.089	.077	.034	.029	.025		

C Range: 0 - 360DEG
 C Interval: 30.0DEG
 Test Speed: HIGH
 Temperature:25.3DEG
 Operators:LPC
 Test Date:2021-12-15

γ Range: 0 - 180DEG
 γ Interval: 1.0DEG
 Test System:EVERFINE GO-2000B_V1 SYSTEM V2.0.362
 Humidity:65.0%
 Test Distance:9.200m [K=1.0000]
 Remarks:

UGR(Unified Glare Rating) Table

Test:U:24.00V I:0.6002A P:14.40W PF:1.000 Freq:50.00Hz Lamp Flux:245.474x1 lm										
NAME: SF21-24V-5050-56-DMX4SM-RGBW(4000K)					TYPE:硅胶			WEIGHT:		
SPEC.:					DIM.: 28mm*11.5mm			SERIAL No.:2021121510		
MFR.: OLYMPIA					SUR.:1*0.016			Shielding Angle:		
ceiling/cavity	0.7	0.7	0.5	0.5	0.3	0.7	0.7	0.5	0.5	0.3
walls	0.5	0.3	0.5	0.3	0.3	0.5	0.3	0.5	0.3	0.3
working plane	0.2	0.2	0.2	0.2	0.2	0.2	0.2	0.2	0.2	0.2
Room dimensions	Viewed crosswise					Viewed endwise				
x = 2H y = 2H	22.5	23.8	23.0	24.4	25.0	19.7	21.0	20.2	21.5	22.2
3H	25.3	26.5	25.9	27.1	27.8	21.1	22.3	21.7	22.9	23.6
4H	26.8	28.0	27.4	28.6	29.3	21.7	22.8	22.3	23.4	24.2
6H	28.5	29.6	29.2	30.3	31.0	22.0	23.1	22.7	23.8	24.5
8H	29.5	30.6	30.2	31.2	32.0	22.1	23.2	22.8	23.8	24.6
12H	30.6	31.6	31.3	32.3	33.1	22.1	23.2	22.8	23.8	24.6
4H 2H	23.1	24.2	23.7	24.8	25.6	21.1	22.3	21.8	22.9	23.6
3H	26.2	27.2	26.9	27.9	28.6	22.9	24.0	23.6	24.6	25.4
4H	28.0	28.9	28.6	29.6	30.4	23.8	24.7	24.4	25.4	26.2
6H	29.9	30.7	30.6	31.4	32.3	24.4	25.2	25.1	25.9	26.8
8H	31.0	31.7	31.7	32.5	33.3	24.6	25.4	25.3	26.1	27.0
12H	32.2	32.9	32.9	33.6	34.5	24.7	25.5	25.5	26.2	27.1
8H 4H	28.4	29.1	29.1	29.9	30.7	25.2	26.0	25.9	26.7	27.6
6H	30.7	31.3	31.4	32.1	33.0	26.3	27.0	27.1	27.7	28.6
8H	32.0	32.6	32.7	33.3	34.2	26.8	27.4	27.6	28.2	29.1
12H	33.5	34.0	34.2	34.8	35.7	27.2	27.7	28.0	28.5	29.5
12H 4H	28.4	29.1	29.1	29.8	30.7	25.7	26.4	26.4	27.1	28.0
6H	30.8	31.4	31.6	32.2	33.1	27.1	27.7	27.9	28.5	29.4
8H	32.3	32.8	33.0	33.6	34.5	27.8	28.3	28.6	29.1	30.1
Variations with the observer position at spacings:										
S = 1.0H	+ 0.1 / - 0.1					+ 0.1 / - 0.1				
1.5H	+ 0.2 / - 0.3					+ 0.2 / - 0.3				
2.0H	+ 0.3 / - 0.4					+ 0.3 / - 0.4				

CIE Pub.117, 245.5 lm Total Lamp Luminous Flux Correct (8log(F/F0) = -4.9)

C Range: 0 - 360DEG
 C Interval: 30.0DEG
 Test Speed: HIGH
 Temperature:25.3DEG
 Operators:LPC
 Test Date:2021-12-15

γ Range: 0 - 180DEG
 γ Interval: 1.0DEG
 Test System:EVERFINE GO-2000B_V1 SYSTEM V2.0.362
 Humidity:65.0%
 Test Distance:9.200m [K=1.0000]
 Remarks:

UTILIZATION FACTORS TABLE

Test:U:24.00V I:0.6002A P:14.40W PF:1.000 Freq:50.00Hz Lamp Flux:245.474x1 lm		
NAME: SF21-24V-5050-56-DMX4SM-RGBW(4000K)	TYPE: 硅胶	WEIGHT:
SPEC.:	DIM.: 28mm*11.5mm	SERIAL No.:2021121510
MFR.: OLYMPIA	SUR.:1*0.016	Shielding Angle:

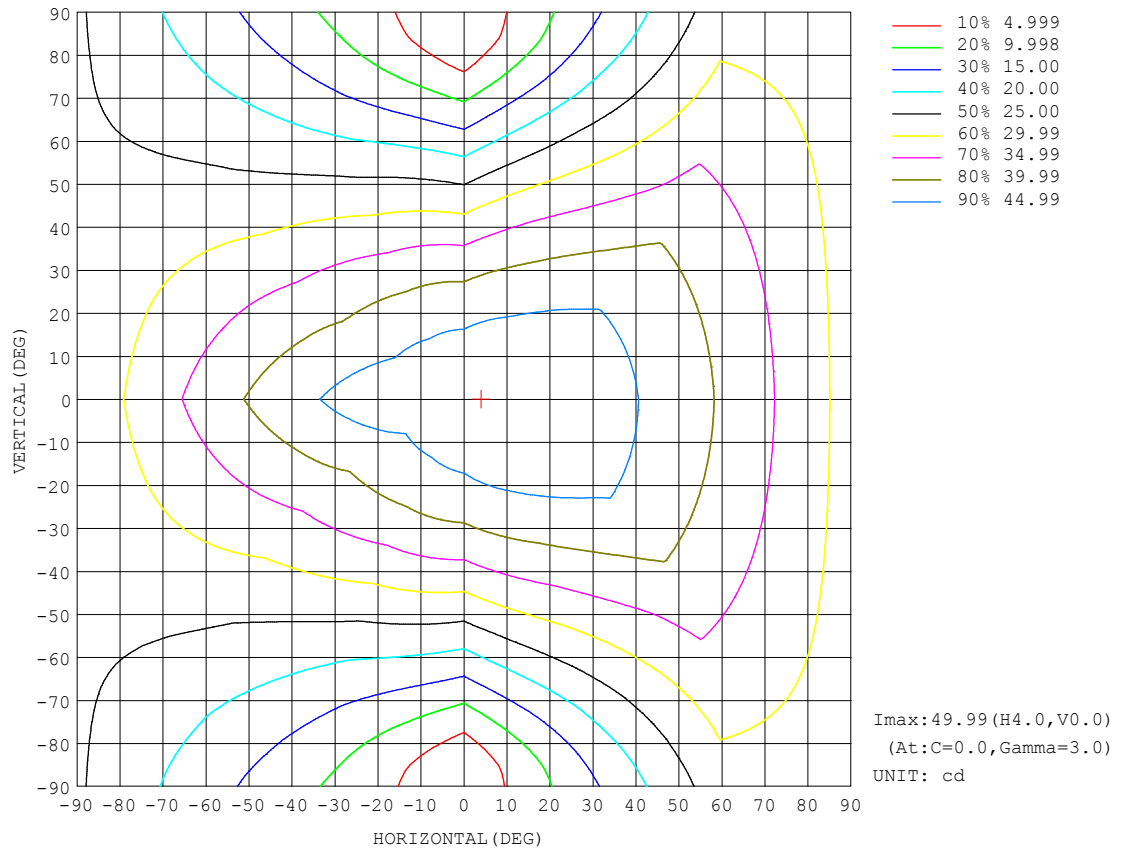
REFLECTANCE										
Ceiling	0.8	0.8	0.8	0.7	0.7	0.7	0.5	0.5	0.5	0
Walls	0.7	0.5	0.3	0.7	0.5	0.3	0.7	0.5	0.3	0
Working plane	0.2	0.2	0.2	0.2	0.2	0.2	0.2	0.2	0.2	0
ROOM INDEX	UTILIZATION FACTORS (PERCENT) $k(RI) \times RCR = 5$									
$k = 0.60$	46	34	26	45	33	26	43	32	26	19
0.80	55	42	34	53	41	33	50	39	32	24
1.00	63	50	41	61	48	40	56	48	39	30
1.25	70	57	48	67	55	47	62	52	45	35
1.50	75	62	53	72	60	52	66	57	50	39
2.00	82	71	62	79	68	60	72	64	57	44
2.50	87	76	68	83	73	66	76	68	62	48
3.00	90	81	73	86	78	71	79	72	66	51
4.00	95	87	80	91	83	77	83	77	72	56
5.00	98	91	85	94	87	82	85	80	76	59
ROOM INDEX	UF(total)									Direct
According to DIN EN 13032-2 2004			Suspended					SHRNM = 1.25		

C Range: 0 - 360DEG
C Interval: 30.0DEG
Test Speed: HIGH
Temperature:25.3DEG
Operators:LPC
Test Date:2021-12-15

γ Range: 0 - 180DEG
 γ Interval: 1.0DEG
Test System:EVERFINE GO-2000B_V1 SYSTEM V2.0.362
Humidity:65.0%
Test Distance:9.200m [K=1.0000]
Remarks:

ISOCANDELA DIAGRAM

Test:U:24.00V I:0.6002A P:14.40W PF:1.000 Freq:50.00Hz Lamp Flux:245.474x1 lm		
NAME: SF21-24V-5050-56-DMX4SM-RGBW(4000K)	TYPE: 硅胶	WEIGHT:
SPEC.:	DIM.: 28mm*11.5mm	SERIAL No.:2021121510
MFR.: OLYMPIA	SUR.:1*0.016	Shielding Angle:

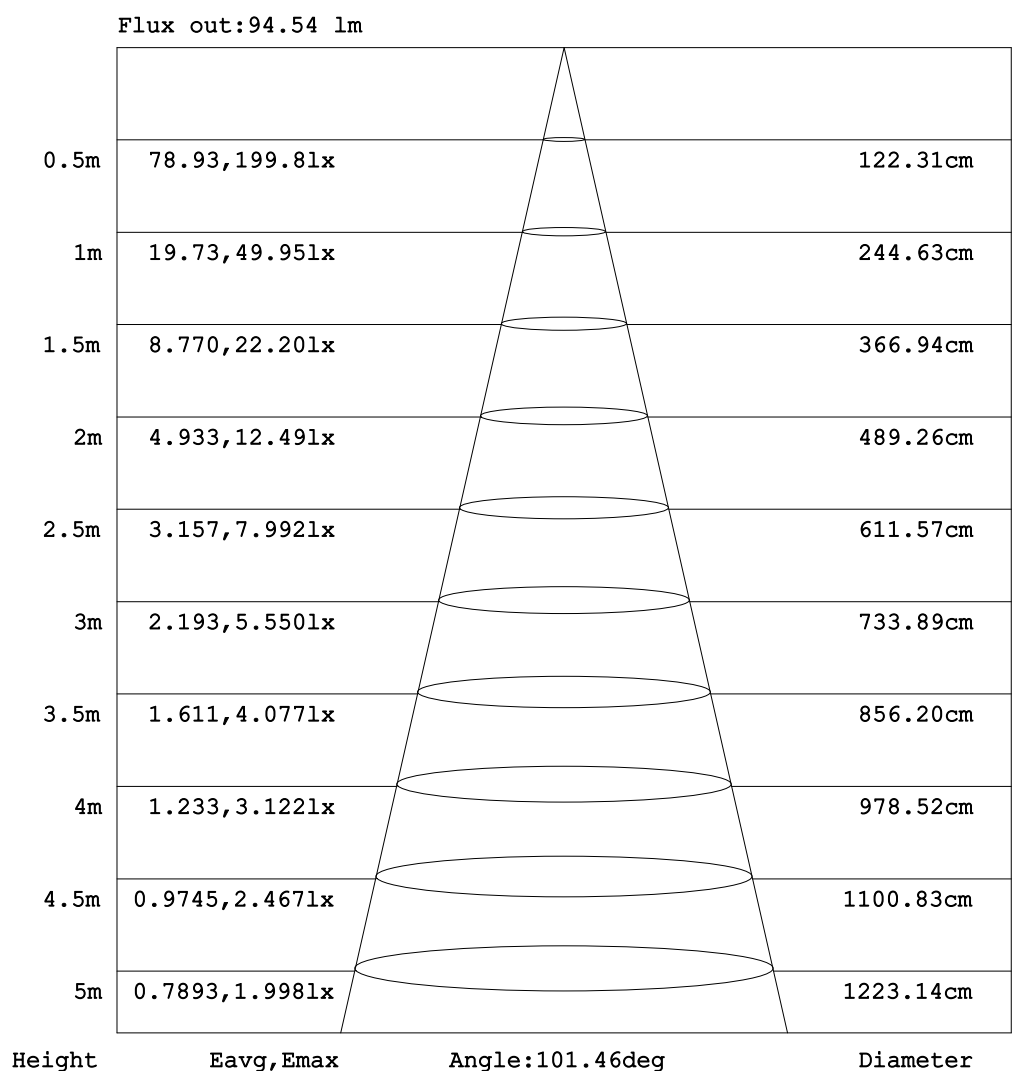


C Range: 0 - 360DEG
C Interval: 30.0DEG
Test Speed: HIGH
Temperature: 25.3DEG
Operators: LPC
Test Date: 2021-12-15

γ Range: 0 - 180DEG
 γ Interval: 1.0DEG
Test System: EVERFINE GO-2000B_V1 SYSTEM V2.0.362
Humidity: 65.0%
Test Distance: 9.200m [K=1.0000]
Remarks:

AAI Figure

Test:U:24.00V I:0.6002A P:14.40W PF:1.000 Freq:50.00Hz Lamp Flux:245.474x1 lm		
NAME: SF21-24V-5050-56-DMX4SM-RGBW(4000K)	TYPE: 硅胶	WEIGHT:
SPEC.:	DIM.: 28mm*11.5mm	SERIAL No.:2021121510
MFR.: OLYMPIA	SUR.:1*0.016	Shielding Angle:



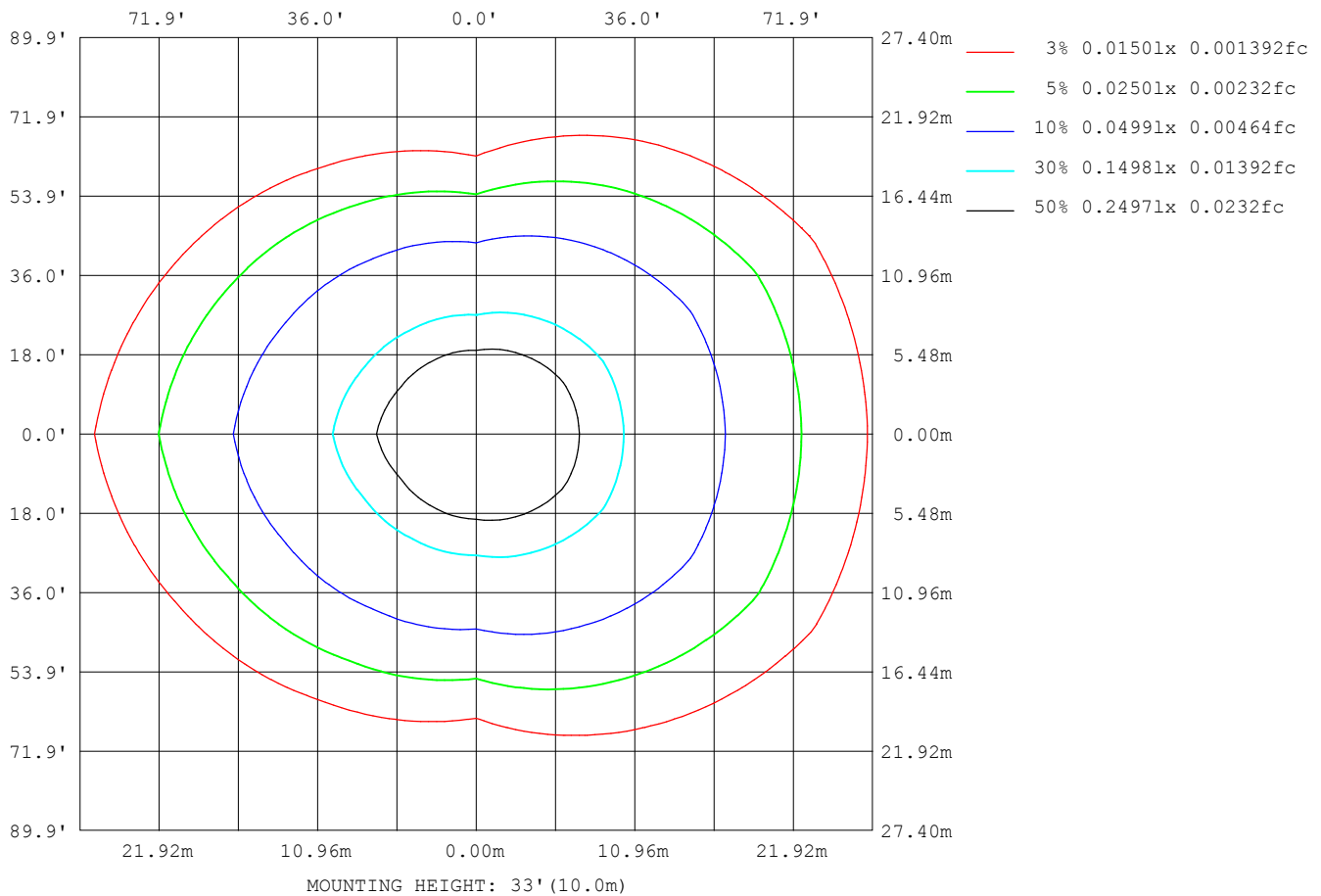
Note: The Curves indicate the illuminated area and the average illumination when the luminaire is at different distance.

C Range: 0 - 360DEG
 C Interval: 30.0DEG
 Test Speed: HIGH
 Temperature: 25.3DEG
 Operators: LPC
 Test Date: 2021-12-15

γ Range: 0 - 180DEG
 γ Interval: 1.0DEG
 Test System: EVERFINE GO-2000B_V1 SYSTEM V2.0.362
 Humidity: 65.0%
 Test Distance: 9.200m [K=1.0000]
 Remarks:

ISOLUX DIAGRAM

Test:U:24.00V I:0.6002A P:14.40W PF:1.000 Freq:50.00Hz Lamp Flux:245.474x1 lm		
NAME: SF21-24V-5050-56-DMX4SM-RGBW(4000K)	TYPE: 硅胶	WEIGHT:
SPEC.:	DIM.: 28mm*11.5mm	SERIAL No.:2021121510
MFR.: OLYMPIA	SUR.:1*0.016	Shielding Angle:



C Range: 0 - 360DEG
C Interval: 30.0DEG
Test Speed: HIGH
Temperature:25.3DEG
Operators:LPC
Test Date:2021-12-15

γ Range: 0 - 180DEG
 γ Interval: 1.0DEG
Test System:EVERFINE GO-2000B_V1 SYSTEM V2.0.362
Humidity:65.0%
Test Distance:9.200m [K=1.0000]
Remarks:

LED Avg.L Report

Test:U:24.00V I:0.6002A P:14.40W PF:1.000 Freq:50.00Hz Lamp Flux:245.474x1 lm		
NAME: SF21-24V-5050-56-DMX4SM-RGBW(4000K)	TYPE:硅胶	WEIGHT:
SPEC.:	DIM.: 28mm*11.5mm	SERIAL No.:2021121510
MFR.: OLYMPIA	SUR.:1*0.016	Shielding Angle:

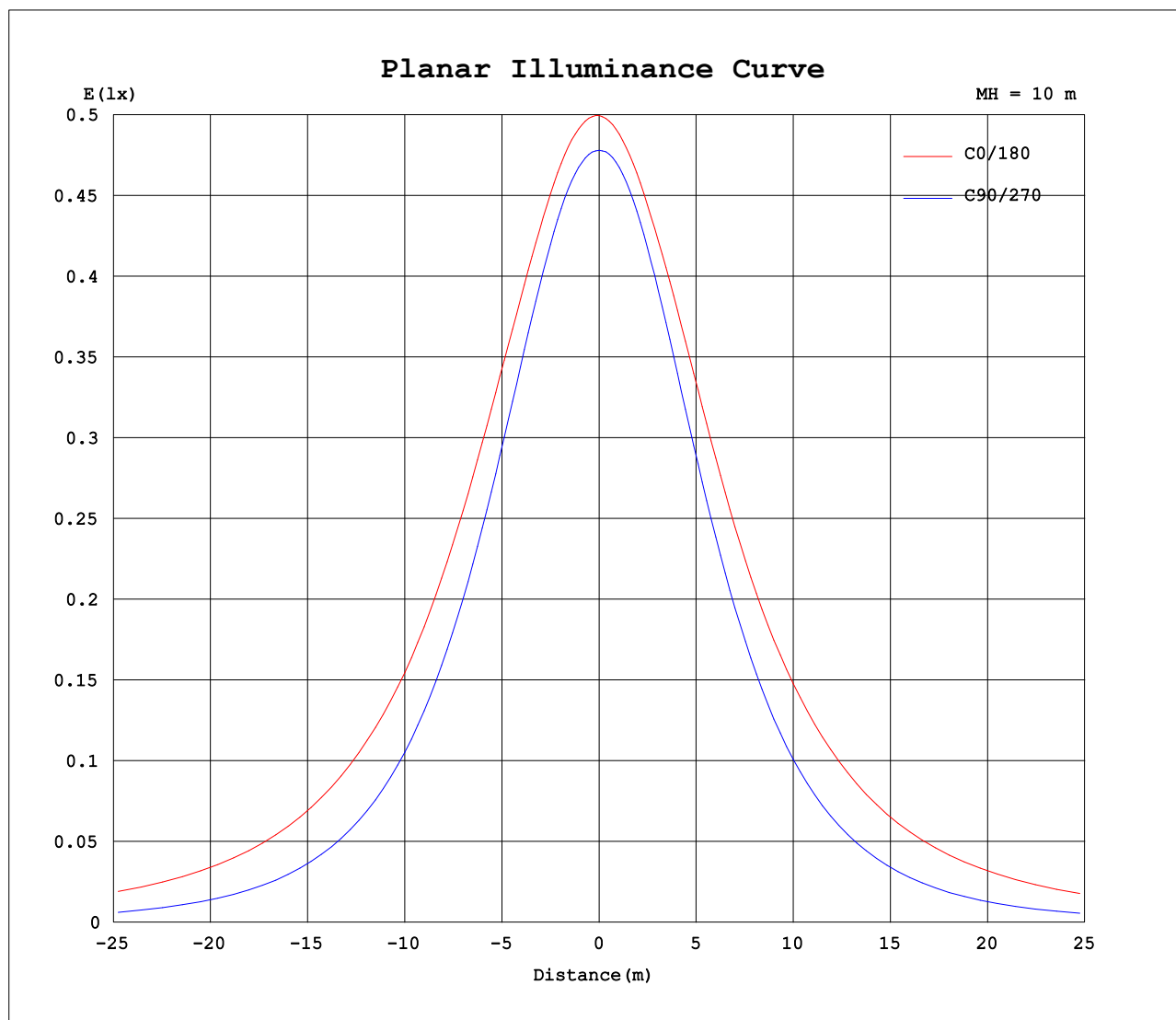
AvgL	cd/m2
L_0~180(65)av	5383
L_0~180(75)av	7911
L_0~180(85)av	20696
L_90~270(65)av	2047
L_90~270(75)av	1507
L_90~270(85)av	611
L_45(65)av	4058
L_45(75)av	5579
L_45(85)av	13769

Standard: GB/T 29293-2012

C Range: 0 - 360DEG
C Interval: 30.0DEG
Test Speed: HIGH
Temperature:25.3DEG
Operators:LPC
Test Date:2021-12-15

γ Range: 0 - 180DEG
γ Interval: 1.0DEG
Test System:EVERFINE GO-2000B_V1 SYSTEM V2.0.362
Humidity:65.0%
Test Distance:9.200m [K=1.0000]
Remarks:

Planar Illuminance Curve



C Range: 0 - 360DEG
C Interval: 30.0DEG
Test Speed: HIGH
Temperature: 25.3DEG
Operators: LPC
Test Date: 2021-12-15

γ Range: 0 - 180DEG
 γ Interval: 1.0DEG
Test System: EVERFINE GO-2000B_V1 SYSTEM V2.0.362
Humidity: 65.0%
Test Distance: 9.200m [K=1.0000]
Remarks:

LUMINOUS DISTRIBUTION INTENSITY DATA

Test:U:24.00V I:0.6002A P:14.40W PF:1.000 Freq:50.00Hz Lamp Flux:245.474x1 lm		
NAME: SF21-24V-5050-56-DMX4SM-RGBW(4000K)	TYPE: 硅胶	WEIGHT:
SPEC.:	DIM.: 28mm*11.5mm	SERIAL No.:2021121510
MFR.: OLYMPIA	SUR.:1*0.016	Shielding Angle:

Table--1

UNIT: cd

C (DEG) γ (DEG)	0	30	60	90	120	150	180	210	240	270	300	330						
0	49.9	48.5	48.1	47.8	47.7	47.6	49.9	48.5	48.1	47.8	47.7	47.6						
5	50.0	49.1	48.2	47.6	47.3	47.1	49.7	47.9	47.6	47.6	47.8	48.1						
10	49.8	49.3	48.2	47.0	46.5	46.3	49.2	47.1	46.7	46.8	47.6	48.4						
15	49.3	49.3	47.4	45.7	45.1	45.2	48.5	46.0	45.4	45.4	46.8	48.4						
20	48.7	49.0	46.3	44.0	43.4	43.8	47.8	44.6	43.6	43.5	45.6	48.0						
25	48.1	48.3	44.8	41.9	41.4	42.1	47.0	42.8	41.5	41.2	44.0	47.4						
30	47.3	47.4	43.0	39.3	39.1	40.4	45.9	41.1	39.1	38.5	42.2	46.6						
35	46.4	46.2	41.0	36.4	36.6	38.7	44.6	39.3	36.6	35.4	40.3	45.5						
40	45.1	45.1	38.8	33.3	33.8	36.8	43.1	37.4	33.8	32.1	38.3	44.4						
45	43.7	43.8	36.4	29.8	31.1	34.7	41.8	35.4	31.0	28.6	35.9	43.2						
50	42.5	42.4	33.8	26.1	28.2	32.7	40.4	33.2	28.2	24.9	33.4	41.8						
55	41.0	40.8	31.1	22.3	25.3	30.6	38.7	31.1	25.3	21.0	30.7	40.3						
60	39.4	38.9	28.4	18.5	22.3	28.5	37.0	29.0	22.3	17.1	28.1	38.5						
65	37.6	37.2	25.7	14.5	19.4	26.5	35.2	26.9	19.4	13.2	25.4	36.8						
70	35.8	35.5	23.0	10.5	16.8	24.5	33.4	24.9	16.7	9.32	22.7	35.2						
75	34.0	33.6	20.4	6.78	14.4	22.5	31.6	22.9	14.3	5.70	20.1	33.4						
80	32.1	31.7	18.1	3.42	12.4	20.5	29.7	20.9	12.2	2.63	17.9	31.5						
85	30.0	29.8	16.0	1.06	10.5	18.6	27.7	18.9	10.4	0.64	15.7	29.7						
90	27.8	27.9	14.3	0.70	9.11	16.9	25.6	17.1	8.91	0.50	14.1	27.9						
95	25.6	26.2	13.1	0.72	8.09	15.4	23.6	15.6	7.86	0.51	12.8	26.2						
100	23.0	22.2	11.9	0.78	7.33	13.0	21.2	13.2	7.09	0.59	11.8	22.5						
105	20.9	21.1	9.99	1.00	5.41	12.3	19.4	12.4	5.41	0.77	10.1	21.4						
110	19.0	19.5	9.42	1.13	5.06	11.3	17.7	11.3	4.95	1.01	9.76	19.8						
115	17.3	18.0	9.10	1.35	4.55	9.72	15.6	10.3	4.44	1.27	8.64	18.3						
120	15.9	16.6	8.54	1.56	4.08	8.73	14.3	9.12	3.99	1.48	8.37	16.9						
125	14.6	15.4	7.42	1.78	3.69	7.85	13.1	8.03	3.57	1.65	7.46	15.6						
130	13.3	14.0	5.69	1.98	3.40	6.94	11.9	7.10	3.27	1.81	7.23	14.2						
135	12.0	11.7	5.34	2.16	3.01	5.90	10.7	5.93	2.94	1.96	6.62	11.6						
140	10.5	9.57	5.40	2.31	2.52	5.01	8.61	5.11	2.50	2.12	5.75	10.1						
145	8.83	7.46	5.06	2.44	2.00	4.39	7.91	4.48	1.97	2.29	5.19	8.16						
150	7.87	5.85	4.57	2.77	1.61	3.62	7.05	3.78	1.55	2.63	4.70	7.29						
155	7.06	5.56	4.52	3.12	2.13	2.79	5.95	2.95	2.05	3.00	4.59	6.11						
160	6.02	4.80	4.73	3.46	1.36	1.87	4.87	2.12	1.85	3.36	4.80	5.22						
165	4.99	4.00	4.78	3.78	1.20	2.27	4.23	1.93	1.65	3.65	4.83	4.32						
170	2.58	4.08	4.72	4.05	1.19	1.40	2.18	1.26	1.46	3.88	4.63	4.40						
175	2.01	3.92	4.53	4.13	1.17	1.20	1.64	1.24	1.27	4.07	4.43	4.35						
180	1.23	3.20	4.27	4.22	4.05	3.78	1.23	3.49	4.15	4.25	4.10	3.80						

C Range: 0 - 360DEG
C Interval: 30.0DEG
Test Speed: HIGH
Temperature:25.3DEG
Operators:LPC
Test Date:2021-12-15

γ Range: 0 - 180DEG
γ Interval: 1.0DEG
Test System:EVERFINE GO-2000B_V1 SYSTEM V2.0.362
Humidity:65.0%
Test Distance:9.200m [K=1.0000]
Remarks:

Photometric Data Table [cd]

G/C	0.0	30.0	60.0	90.0	120.0	150.0	180.0	210.0	240.0	270.0
0.0	49.95	48.53	48.06	47.79	47.73	47.63	49.95	48.53	48.06	47.79
3.0	49.99	48.88	48.21	47.73	47.48	47.29	49.80	48.16	47.82	47.76
6.0	49.93	49.16	48.22	47.51	47.13	46.92	49.59	47.78	47.45	47.50
9.0	49.83	49.26	48.21	47.14	46.65	46.43	49.29	47.30	46.94	47.03
12.0	49.59	49.33	47.92	46.50	45.96	45.85	48.91	46.71	46.24	46.31
15.0	49.27	49.28	47.45	45.69	45.12	45.17	48.48	45.99	45.36	45.39
18.0	48.90	49.13	46.83	44.71	44.15	44.34	48.10	45.19	44.34	44.33
21.0	48.53	48.86	46.05	43.58	43.02	43.42	47.70	44.25	43.19	43.07
24.0	48.18	48.43	45.16	42.30	41.81	42.43	47.19	43.21	41.92	41.66
27.0	47.81	47.93	44.16	40.88	40.50	41.33	46.61	42.13	40.55	40.15
30.0	47.34	47.37	43.05	39.34	39.10	40.37	45.92	41.05	39.11	38.48
33.0	46.78	46.72	41.87	37.63	37.59	39.36	45.13	40.03	37.59	36.69
36.0	46.14	46.01	40.61	35.81	36.01	38.29	44.27	38.97	36.01	34.80
39.0	45.41	45.29	39.27	33.92	34.37	37.20	43.38	37.82	34.36	32.77
42.0	44.59	44.59	37.84	31.92	32.72	36.01	42.62	36.63	32.69	30.70
45.0	43.74	43.83	36.36	29.81	31.09	34.74	41.84	35.40	31.03	28.58
48.0	43.04	43.00	34.81	27.67	29.40	33.50	40.98	34.11	29.35	26.37
51.0	42.25	42.09	33.23	25.43	27.66	32.26	40.06	32.83	27.62	24.11
54.0	41.36	41.11	31.62	23.12	25.89	31.00	39.07	31.56	25.86	21.84
57.0	40.39	40.07	30.01	20.85	24.11	29.75	38.02	30.27	24.09	19.50
60.0	39.37	38.95	28.41	18.46	22.32	28.52	36.98	28.99	22.29	17.09
63.0	38.30	37.86	26.79	16.05	20.57	27.29	35.92	27.76	20.53	14.77
66.0	37.24	36.91	25.16	13.73	18.90	26.09	34.84	26.53	18.84	12.41
69.0	36.16	35.85	23.53	11.33	17.29	24.88	33.75	25.29	17.21	10.07
72.0	35.08	34.74	21.92	8.999	15.82	23.70	32.66	24.11	15.70	7.853
75.0	33.97	33.59	20.39	6.784	14.44	22.49	31.55	22.90	14.29	5.695
78.0	32.82	32.41	19.00	4.649	13.16	21.27	30.43	21.66	13.00	3.729
81.0	31.66	31.30	17.62	2.825	11.97	20.11	29.29	20.46	11.81	2.100
84.0	30.44	30.21	16.35	1.454	10.88	19.01	28.09	19.30	10.70	0.8029
87.0	29.20	29.07	15.24	0.7485	9.914	17.89	26.88	18.17	9.727	0.5181
90.0	27.85	27.95	14.31	0.7036	9.114	16.90	25.61	17.13	8.913	0.4973
93.0	26.50	26.87	13.52	0.7087	8.455	15.95	24.37	16.17	8.240	0.5040
96.0	25.16	25.83	12.84	0.7338	7.928	15.11	23.15	15.26	7.692	0.5108
99.0	23.85	23.38	12.10	0.7541	7.475	13.09	21.68	13.36	7.231	0.5176
102.0	22.13	21.87	11.38	0.9151	6.774	12.69	20.44	12.91	6.703	0.6530
105.0	20.92	21.09	9.993	0.9953	5.406	12.26	19.39	12.41	5.407	0.7736
108.0	19.75	20.13	9.836	1.061	5.162	11.74	18.38	11.87	5.225	0.9194
111.0	18.66	19.22	9.329	1.161	4.962	10.66	17.43	11.02	4.819	1.060
114.0	17.66	18.30	9.050	1.292	4.610	9.969	15.85	10.51	4.512	1.211
117.0	16.75	17.44	8.937	1.433	4.353	9.266	15.06	9.792	4.241	1.347
120.0	15.88	16.64	8.536	1.563	4.083	8.728	14.28	9.119	3.995	1.477
123.0	15.08	15.85	7.981	1.684	3.871	8.231	13.55	8.455	3.658	1.573
126.0	14.31	15.14	7.055	1.810	3.659	7.693	12.85	7.822	3.552	1.673
129.0	13.54	14.45	5.974	1.930	3.514	7.130	12.15	7.264	3.302	1.789
132.0	12.78	13.00	5.354	2.046	3.248	6.602	11.46	6.671	3.155	1.889
135.0	12.03	11.74	5.337	2.156	3.011	5.899	10.67	5.933	2.939	1.965
138.0	11.19	10.19	5.463	2.262	2.740	5.371	9.490	5.449	2.703	2.055
141.0	10.15	9.148	5.338	2.342	2.409	4.879	8.252	4.927	2.396	2.141
144.0	9.135	7.892	5.142	2.418	2.097	4.527	8.065	4.620	2.080	2.256
147.0	8.310	6.716	4.871	2.504	1.820	4.019	7.602	4.203	1.789	2.382
150.0	7.866	5.854	4.574	2.775	1.613	3.617	7.054	3.775	1.553	2.633
153.0	7.420	5.669	4.458	2.996	1.944	3.154	6.495	3.328	1.856	2.849
156.0	6.778	5.432	4.563	3.187	2.230	2.597	5.687	2.771	2.127	3.055
159.0	6.178	4.969	4.704	3.393	1.775	2.029	5.044	2.253	1.884	3.281
162.0	5.661	4.461	4.789	3.609	1.210	1.731	4.662	1.751	1.769	3.502
165.0	4.993	4.001	4.778	3.785	1.202	2.273	4.230	1.928	1.654	3.653
168.0	2.767	4.056	4.759	3.956	1.192	1.550	2.376	1.623	1.539	3.749
171.0	2.484	4.091	4.669	4.091	1.183	1.322	2.085	1.256	1.424	3.940
174.0	2.132	3.970	4.599	4.116	1.170	1.212	1.758	1.244	1.309	4.000
177.0	1.851	3.894	4.383	4.172	1.156	1.161	1.492	1.231	1.194	4.131
180.0	1.226	3.201	4.272	4.222	4.051	3.784	1.226	3.493	4.151	4.247
G/C	300.0	330.0								
0.0	47.73	47.63								
3.0	47.83	47.95								
6.0	47.83	48.22								
9.0	47.69	48.38								
12.0	47.34	48.44								
15.0	46.81	48.35								
18.0	46.12	48.17								
21.0	45.28	47.88								
24.0	44.33	47.56								
27.0	43.30	47.11								
30.0	42.25	46.61								

C Range: 0 - 360DEG
 C Interval: 30.0DEG
 Test Speed: HIGH
 Temperature: 25.3DEG
 Operators: LPC
 Test Date: 2021-12-15

γ Range: 0 - 180DEG
 γ Interval: 1.0DEG
 Test System: EVERFINE GO-2000B_V1 SYSTEM V2.0.362
 Humidity: 65.0%
 Test Distance: 9.200m [K=1.0000]
 Remarks:

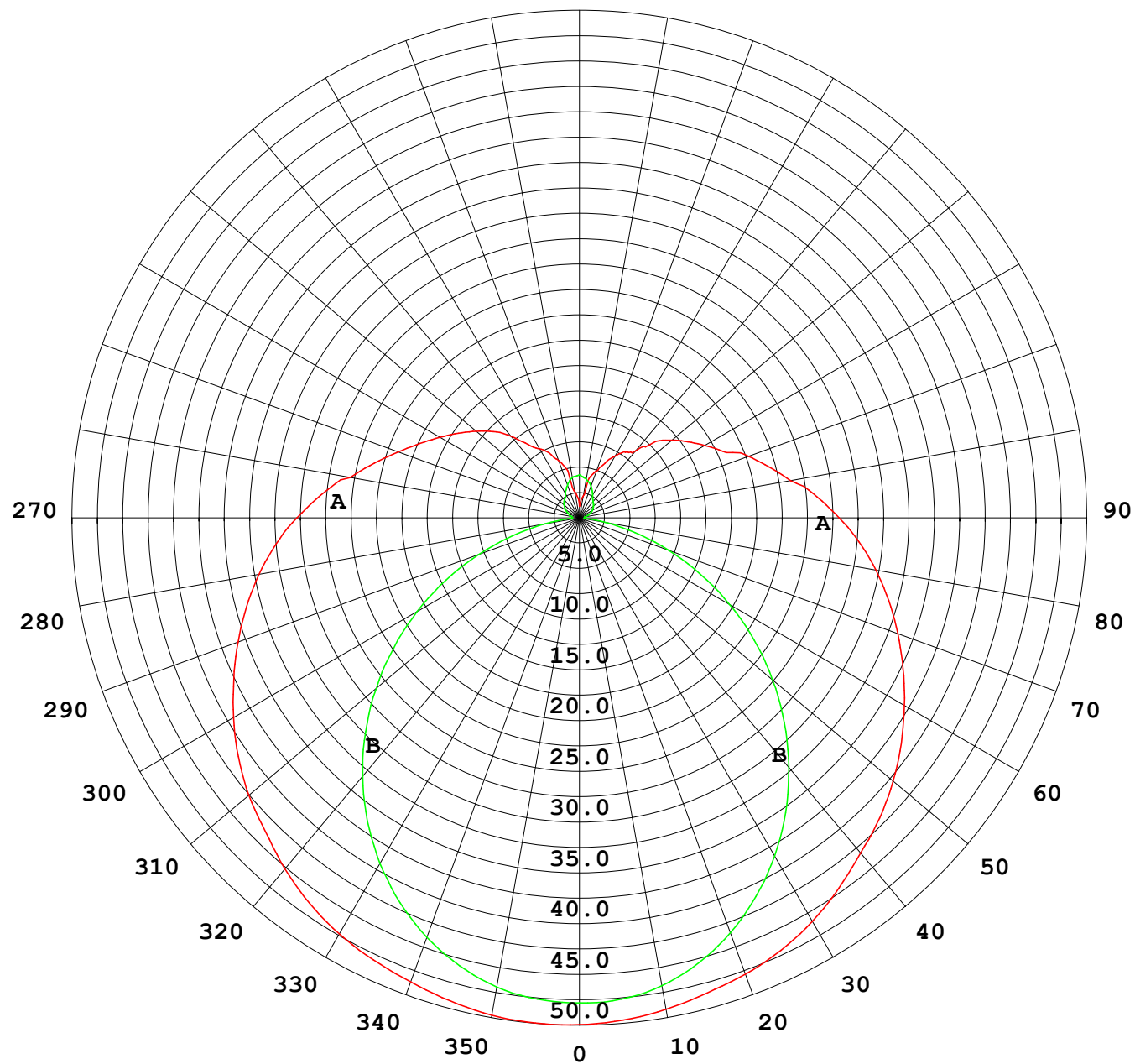
Photometric Data Table [cd]

33.0	41.11	45.99
36.0	39.93	45.30
39.0	38.68	44.59
42.0	37.38	43.88
45.0	35.93	43.16
48.0	34.42	42.37
51.0	32.84	41.52
54.0	31.25	40.59
57.0	29.67	39.60
60.0	28.07	38.51
63.0	26.48	37.45
66.0	24.86	36.52
69.0	23.25	35.53
72.0	21.65	34.49
75.0	20.13	33.38
78.0	18.76	32.25
81.0	17.41	31.15
84.0	16.14	30.08
87.0	15.03	28.97
90.0	14.08	27.90
93.0	13.29	26.86
96.0	12.61	25.82
99.0	11.97	23.49
102.0	11.38	22.14
105.0	10.15	21.37
108.0	9.890	20.49
111.0	9.502	19.53
114.0	9.439	18.60
117.0	8.764	17.74
120.0	8.371	16.91
123.0	7.950	16.12
126.0	7.393	15.38
129.0	7.321	14.60
132.0	6.974	13.41
135.0	6.622	11.60
138.0	6.089	10.60
141.0	5.617	9.694
144.0	5.286	8.243
147.0	5.009	8.006
150.0	4.703	7.294
153.0	4.534	6.666
156.0	4.639	5.937
159.0	4.780	5.429
162.0	4.816	4.782
165.0	4.834	4.323
168.0	4.784	4.372
171.0	4.568	4.408
174.0	4.457	4.383
177.0	4.311	4.213
180.0	4.096	3.799

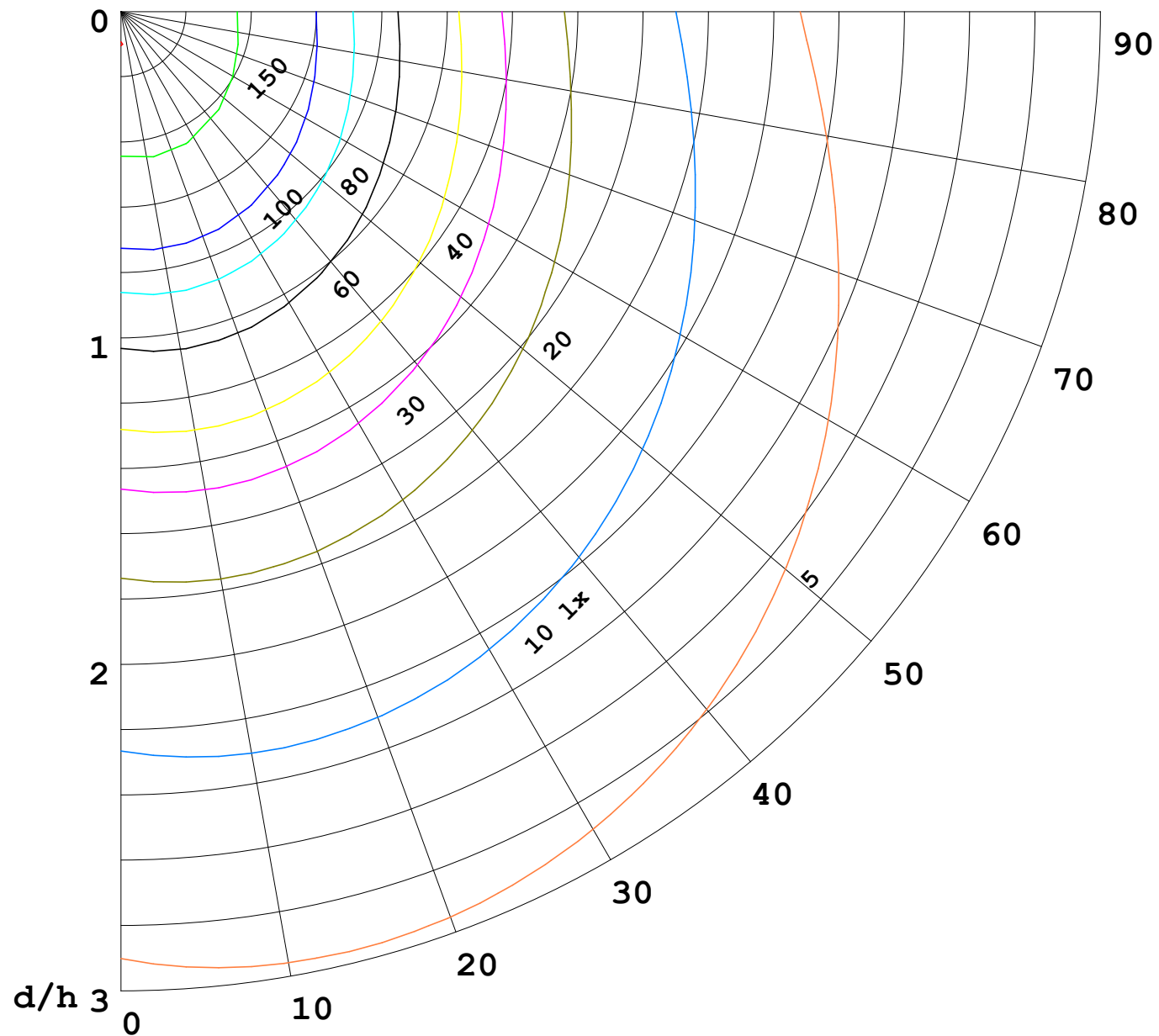
C Range: 0 - 360DEG
C Interval: 30.0DEG
Test Speed: HIGH
Temperature:25.3DEG
Operators:LPC
Test Date:2021-12-15

γ Range: 0 - 180DEG
γ Interval: 1.0DEG
Test System:EVERFINE GO-2000B_V1 SYSTEM V2.0.362
Humidity:65.0%
Test Distance:9.200m [K=1.0000]
Remarks:

I (cd)



K = 1



F = 5000 lm
 K = 0.7
 Hcc = 0.0 m
 Hfc = 0.0 m
 Eave = 100 lx

	Pcc	Pw	Pfc
—	70	50	30
—	50	30	20

