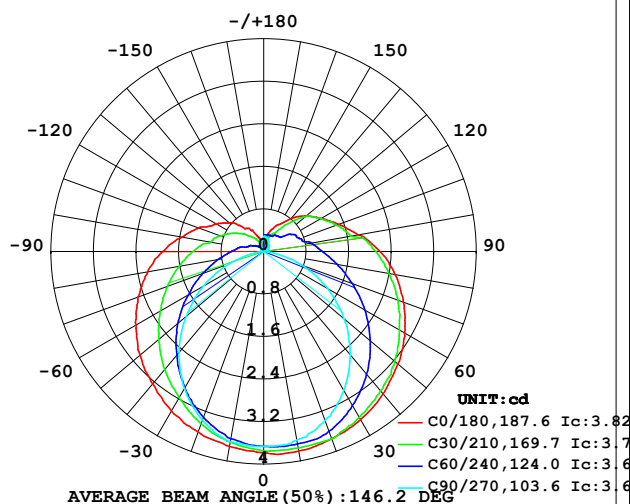


LUMINAIRE PHOTOMETRIC TEST REPORT

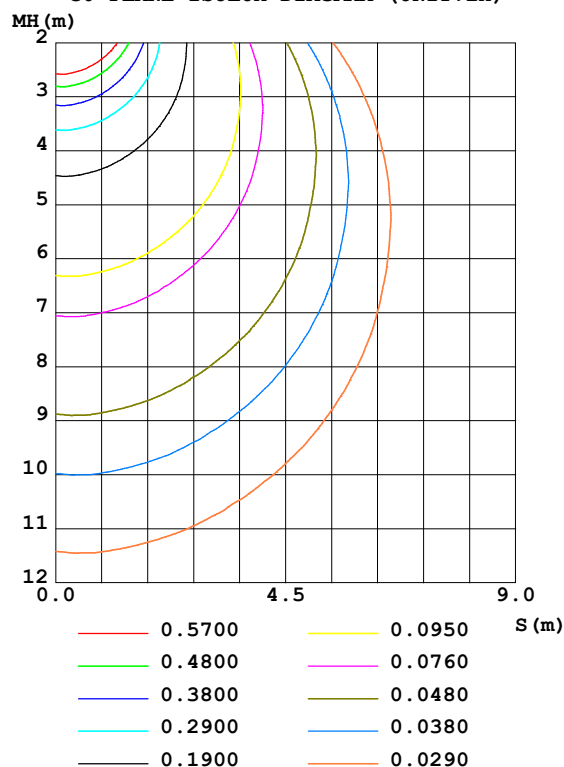
Test:U:24.00V I:0.1905A P:4.572W PF:1.000 Freq:50.00Hz Lamp Flux:18.5753x1 lm		
NAME: SF21-24V-5050-56-DMX4SM-RGBW(4000K)-B	TYPE: 硅胶	WEIGHT:
SPEC.:	DIM.: 28mm*11.5mm	SERIAL No.:2021121508
MFR.: OLYMPIA	SUR.:1*0.016	Shielding Angle:

DATA OF LAMP		PHOTOMETRIC DATA				Eff: 4.06 lm/W
MODEL	5050	I _{max} (cd)	3.824	S/MH(C0/180)	1.37	
NOMINAL POWER(W)	3.75	LOR(%)	100.0	S/MH(C90/270)	1.21	
RATED VOLTAGE(V)	24	TOTAL FLUX(lm)	18.575	η UP,DN(C0-180)	11.5,39.2	
NOMINAL FLUX(lm)	18.5753	CIE CLASS	SEMI-D.	η UP,DN(C180-360)	11.0,38.3	
LAMPS INSIDE	1	η up(%)	22.4	CIBSE SHR NOM	1.50	
TEST VOLTAGE(V)	24	η down(%)	77.6	CIBSE SHR MAX	1.55	

LUMINOUS INTENSITY DISTRIBUTION DIAGRAM



C0 PLANE ISOLUX DIAGRAM (UNIT:lx)



C Range: 0 - 360DEG
C Interval: 30.0DEG
Test Speed: HIGH
Temperature:25.3DEG
Operators:LPC
Test Date:2021-12-15

γ Range: 0 - 180DEG
γ Interval: 1.0DEG
Test System:EVERFINE GO-2000B_V1 SYSTEM V2.0.362
Humidity:65.0%
Test Distance:9.200m [K=1.0000]
Remarks:

ZONAL FLUX DIAGRAM

ZONAL FLUX DIAGRAM:

γ	C0	C45	C90	C135	C180	C225	C270	C315	γ	Φ zone	Φ total	%lum, lamp
10	3.811	3.714	3.598	3.593	3.724	3.606	3.629	3.697	0- 10	0.3520	0.3520	1.89,1.89
20	3.749	3.671	3.382	3.385	3.613	3.387	3.378	3.614	10- 20	1.019	1.371	7.38,7.38
30	3.649	3.470	3.015	3.083	3.468	3.068	2.981	3.453	20- 30	1.572	2.942	15.8,15.8
40	3.498	3.217	2.537	2.734	3.251	2.721	2.478	3.209	30- 40	1.956	4.898	26.4,26.4
50	3.292	2.918	1.975	2.352	3.035	2.347	1.905	2.910	40- 50	2.153	7.051	38,38
60	3.061	2.576	1.392	1.943	2.769	1.942	1.307	2.573	50- 60	2.161	9.213	49.6,49.6
70	2.795	2.232	0.7684	1.581	2.517	1.578	0.6940	2.239	60- 70	2.007	11.22	60.4,60.4
80	2.508	1.897	0.1956	1.239	2.211	1.239	0.1611	1.907	70- 80	1.743	12.96	69.8,69.8
90	2.187	1.606	0.0151	0.9700	1.899	0.9700	0	1.616	80- 90	1.447	14.41	77.6,77.6
100	1.805	1.287	0.0201	0.7463	1.563	0.7388	0	1.312	90-100	1.197	15.61	84,84
110	1.498	1.083	0.0453	0.5754	1.311	0.5738	0	1.131	100-110	0.9277	16.53	89,89
120	1.247	0.9498	0.0804	0.4424	1.025	0.4498	0.0503	0.9510	110-120	0.7257	17.26	92.9,92.9
130	1.041	0.7187	0.1207	0.3367	0.8392	0.3393	0.0503	0.8042	120-130	0.5417	17.80	95.8,95.8
140	0.8194	0.5261	0.1479	0.2237	0.5578	0.2387	0.0653	0.5756	130-140	0.3629	18.16	97.8,97.8
150	0.5882	0.3652	0.1910	0.1306	0.4573	0.1609	0.1135	0.4217	140-150	0.2130	18.38	98.9,98.9
160	0.4424	0.3102	0.2513	0.0781	0.2814	0.0830	0.1808	0.3338	150-160	0.1235	18.50	99.6,99.6
170	0.1609	0.2771	0.2821	0.0427	0.0702	0.0427	0.2161	0.2990	160-170	0.0580	18.56	99.9,99.9
180	0.0402	0.2186	0.2865	0.2412	0.0402	0.2161	0.2814	0.2538	170-180	0.0159	18.58	100,100
DEG	LUMINOUS INTENSITY:cd									UNIT:lm		

Conical surface Flux(90deg): 5.962 lm

%lum = 32.1%

%lamp = 32.1%

Conical surface Flux(120deg): 9.2127 lm

%lum = 49.6%

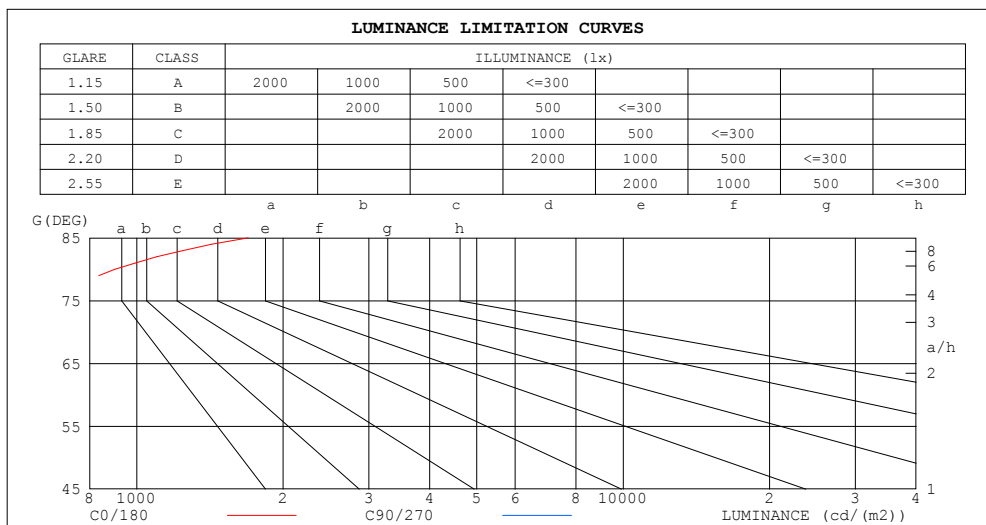
%lamp = 49.6%

C Range: 0 - 360DEG
 C Interval: 30.0DEG
 Test Speed: HIGH
 Temperature:25.3DEG
 Operators:LPC
 Test Date:2021-12-15

γ Range: 0 - 180DEG
 γ Interval: 1.0DEG
 Test System:EVERFINE GO-2000B_V1 SYSTEM V2.0.362
 Humidity:65.0%
 Test Distance:9.200m [K=1.0000]
 Remarks:

LUMINANCE LIMITATION CURVES

Test:U:24.00V I:0.1905A P:4.572W PF:1.000 Freq:50.00Hz Lamp Flux:18.5753x1 lm		
NAME: SF21-24V-5050-56-DMX4SM-RGBW(4000K)-B	TYPE: 硅胶	WEIGHT:
SPEC.:	DIM.: 28mm*11.5mm	SERIAL No.:2021121508
MFR.: OLYMPIA	SUR.:1*0.016	Shielding Angle:



LUMINANCE cd/(m2)		
G (DEG)	C0/180	C90/270
85	1694	14
80	903	70
75	642	113
70	511	140
65	434	160
60	383	174
55	348	182
50	320	192
45	299	200

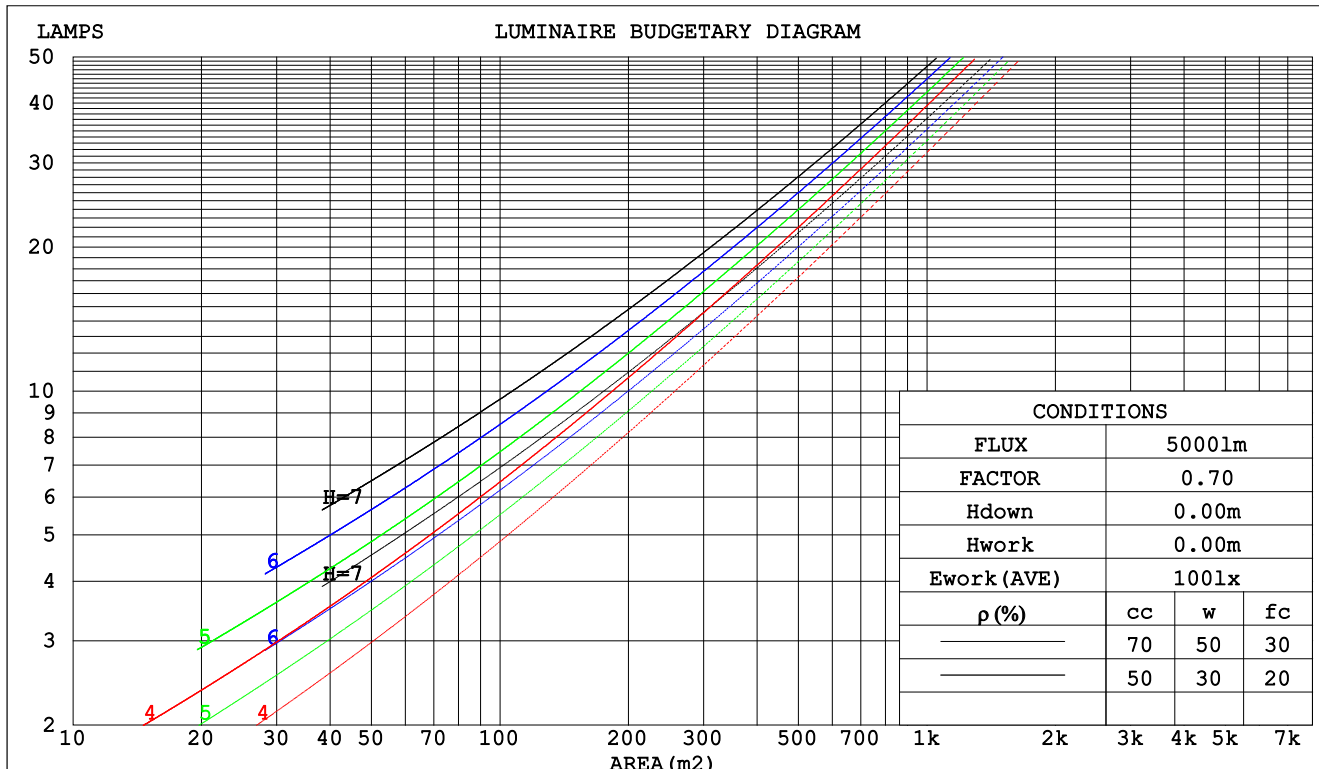
C Range: 0 - 360DEG
C Interval: 30.0DEG
Test Speed: HIGH
Temperature:25.3DEG
Operators:LPC
Test Date:2021-12-15

γ Range: 0 - 180DEG
 γ Interval: 1.0DEG
Test System:EVERFINE GO-2000B_V1 SYSTEM V2.0.362
Humidity:65.0%
Test Distance:9.200m [K=1.0000]
Remarks:

CU AND LUMINAIRE BUDGETARY ESTIMATE DIAGRAM

Test:U:24.00V I:0.1905A P:4.572W PF:1.000 Freq:50.00Hz Lamp Flux:18.5753x1 lm		
NAME: SF21-24V-5050-56-DMX4SM-RGBW(4000K)-B	TYPE: 硅胶	WEIGHT:
SPEC.:	DIM.: 28mm*11.5mm	SERIAL No.:2021121508
MFR.: OLYMPIA	SUR.:1*0.016	Shielding Angle:

pcc	80%			70%			50%			30%			10%			0
pw	50%	30%	10%	50%	30%	10%	50%	30%	10%	50%	30%	10%	50%	30%	10%	0
pfc	20%			20%			20%			20%			20%			0
RCR	Coefficients of Utilization(CU)															
0.0	1.14	1.14	1.14	1.08	1.08	1.08	.99	.99	.99	.90	.90	.90	.81	.81	.81	.78
1.0	.94	.89	.84	.90	.85	.81	.81	.78	.74	.74	.71	.68	.66	.64	.62	.58
2.0	.81	.73	.66	.77	.70	.64	.70	.64	.59	.63	.58	.54	.57	.53	.50	.46
3.0	.70	.61	.54	.67	.58	.52	.60	.54	.48	.55	.49	.44	.49	.45	.41	.38
4.0	.61	.52	.45	.58	.50	.43	.53	.46	.40	.48	.42	.37	.43	.38	.34	.31
5.0	.54	.45	.38	.52	.43	.37	.47	.40	.34	.43	.37	.32	.39	.34	.29	.27
6.0	.49	.39	.33	.47	.38	.32	.42	.35	.30	.39	.32	.28	.35	.30	.26	.23
7.0	.44	.35	.29	.42	.34	.28	.38	.31	.26	.35	.29	.24	.32	.27	.23	.20
8.0	.40	.31	.25	.38	.30	.24	.35	.28	.23	.32	.26	.21	.29	.24	.20	.18
9.0	.36	.28	.22	.35	.27	.22	.32	.25	.21	.29	.24	.19	.27	.22	.18	.16
10.0	.33	.25	.20	.32	.25	.20	.30	.23	.18	.27	.21	.17	.25	.20	.16	.14



C Range: 0 - 360DEG
 C Interval: 30.0DEG
 Test Speed: HIGH
 Temperature:25.3DEG
 Operators:LPC
 Test Date:2021-12-15

γ Range: 0 - 180DEG
 γ Interval: 1.0DEG
 Test System:EVERFINE GO-2000B_V1 SYSTEM V2.0.362
 Humidity:65.0%
 Test Distance:9.200m [K=1.0000]
 Remarks:

WEC AND CCEC

Test:U:24.00V I:0.1905A P:4.572W PF:1.000 Freq:50.00Hz Lamp Flux:18.5753x1 lm		
NAME: SF21-24V-5050-56-DMX4SM-RGBW(4000K)-B	TYPE: 硅胶	WEIGHT:
SPEC.:	DIM.: 28mm*11.5mm	SERIAL No.:2021121508
MFR.: OLYMPIA	SUR.:1*0.016	Shielding Angle:

pcc	80%			70%			50%			30%			10%			0	
pw	50%	30%	10%	50%	30%	10%	50%	30%	10%	50%	30%	10%	50%	30%	10%	0	
pfc	20%			20%			20%			20%			20%			0	
RCR	RCR:Room Cavity Ratio						Wall Exitance Coefficients(WEC)										
0.0																	
1.0	.388	.221	.070	.374	.213	.068	.348	.199	.064	.323	.186	.060	.301	.174	.056		
2.0	.334	.183	.056	.321	.177	.054	.297	.165	.051	.275	.154	.048	.255	.144	.045		
3.0	.296	.157	.047	.284	.152	.046	.263	.142	.043	.243	.133	.041	.224	.124	.038		
4.0	.266	.138	.041	.255	.134	.039	.236	.125	.037	.217	.117	.035	.200	.109	.033		
5.0	.241	.123	.036	.232	.119	.035	.214	.111	.033	.197	.104	.031	.182	.097	.029		
6.0	.221	.111	.032	.212	.107	.031	.196	.100	.029	.181	.094	.028	.166	.088	.026		
7.0	.204	.101	.029	.196	.098	.028	.181	.091	.026	.167	.085	.025	.154	.080	.023		
8.0	.189	.092	.026	.182	.089	.025	.168	.084	.024	.155	.078	.023	.143	.073	.021		
9.0	.176	.085	.024	.169	.082	.023	.157	.077	.022	.144	.072	.021	.133	.068	.020		
10.0	.165	.079	.022	.158	.077	.021	.147	.072	.020	.135	.067	.019	.125	.063	.018		

pcc	80%			70%			50%			30%			10%			0
pw	50%	30%	10%	50%	30%	10%	50%	30%	10%	50%	30%	10%	50%	30%	10%	0
pfc	20%			20%			20%			20%			20%			0
RCR	RCR:Room Cavity Ratio						Ceiling Cavity Exitance Coefficients(CCEC)									
0.0	.361	.361	.361	.309	.309	.309	.211	.211	.211	.121	.121	.121	.039	.039	.039	
1.0	.358	.328	.300	.306	.281	.259	.209	.193	.179	.121	.112	.104	.039	.036	.034	
2.0	.351	.305	.266	.301	.263	.230	.206	.182	.161	.119	.106	.094	.038	.034	.031	
3.0	.344	.289	.245	.295	.249	.212	.202	.173	.149	.117	.101	.088	.038	.033	.029	
4.0	.336	.276	.231	.288	.239	.201	.198	.166	.141	.115	.098	.084	.037	.032	.027	
5.0	.328	.267	.221	.282	.231	.192	.194	.161	.136	.113	.095	.081	.036	.031	.027	
6.0	.321	.259	.214	.276	.224	.187	.190	.157	.132	.110	.092	.078	.036	.030	.026	
7.0	.314	.252	.209	.270	.219	.182	.187	.153	.129	.108	.090	.077	.035	.030	.025	
8.0	.307	.247	.205	.265	.214	.179	.183	.150	.127	.106	.089	.076	.034	.029	.025	
9.0	.301	.242	.202	.259	.210	.176	.180	.148	.125	.105	.087	.075	.034	.029	.025	
10.0	.295	.238	.200	.255	.207	.174	.177	.145	.124	.103	.086	.074	.033	.028	.025	

C Range: 0 - 360DEG
 C Interval: 30.0DEG
 Test Speed: HIGH
 Temperature:25.3DEG
 Operators:LPC
 Test Date:2021-12-15

γ Range: 0 - 180DEG
 γ Interval: 1.0DEG
 Test System:EVERFINE GO-2000B_V1 SYSTEM V2.0.362
 Humidity:65.0%
 Test Distance:9.200m [K=1.0000]
 Remarks:

UGR(Unified Glare Rating) Table

Test:U:24.00V I:0.1905A P:4.572W PF:1.000 Freq:50.00Hz Lamp Flux:18.5753x1 lm										
NAME: SF21-24V-5050-56-DMX4SM-RGBW(4000K)-B					TYPE: 硅胶			WEIGHT:		
SPEC.:					DIM.: 28mm*11.5mm			SERIAL No.:2021121508		
MFR.: OLYMPIA					SUR.:1*0.016			Shielding Angle:		
ceiling/cavity	0.7	0.7	0.5	0.5	0.3	0.7	0.7	0.5	0.5	0.3
walls	0.5	0.3	0.5	0.3	0.3	0.5	0.3	0.5	0.3	0.3
working plane	0.2	0.2	0.2	0.2	0.2	0.2	0.2	0.2	0.2	0.2
Room dimensions	Viewed crosswise					Viewed endwise				
x = 2H y = 2H	22.6	23.9	23.1	24.5	25.1	19.8	21.1	20.3	21.6	22.3
3H	25.4	26.6	26.0	27.2	27.9	21.2	22.4	21.8	23.0	23.7
4H	27.0	28.1	27.6	28.8	29.5	21.7	22.9	22.3	23.5	24.2
6H	28.7	29.8	29.4	30.5	31.2	22.0	23.1	22.6	23.7	24.5
8H	29.7	30.8	30.3	31.4	32.2	22.1	23.1	22.7	23.8	24.5
12H	30.8	31.8	31.5	32.5	33.3	22.0	23.1	22.7	23.7	24.5
4H 2H	23.2	24.3	23.8	24.9	25.7	21.2	22.4	21.9	23.0	23.7
3H	26.3	27.3	27.0	28.0	28.7	23.0	24.0	23.7	24.7	25.5
4H	28.1	29.0	28.8	29.7	30.5	23.8	24.8	24.5	25.4	26.2
6H	30.1	30.9	30.8	31.6	32.4	24.4	25.3	25.1	26.0	26.8
8H	31.1	31.9	31.8	32.6	33.5	24.6	25.4	25.3	26.1	27.0
12H	32.4	33.1	33.1	33.8	34.7	24.7	25.4	25.4	26.2	27.0
8H 4H	28.5	29.3	29.2	30.0	30.8	25.3	26.1	26.0	26.8	27.6
6H	30.8	31.5	31.5	32.2	33.1	26.4	27.1	27.1	27.8	28.7
8H	32.1	32.7	32.9	33.5	34.4	26.9	27.5	27.6	28.2	29.1
12H	33.6	34.1	34.4	34.9	35.8	27.2	27.8	28.0	28.5	29.5
12H 4H	28.5	29.2	29.2	30.0	30.8	25.8	26.5	26.5	27.2	28.1
6H	30.9	31.5	31.7	32.3	33.2	27.2	27.8	27.9	28.5	29.4
8H	32.4	32.9	33.2	33.7	34.6	27.9	28.4	28.7	29.2	30.1
Variations with the observer position at spacings:										
S = 1.0H	+ 0.1 / - 0.1					+ 0.1 / - 0.1				
1.5H	+ 0.2 / - 0.3					+ 0.2 / - 0.3				
2.0H	+ 0.3 / - 0.4					+ 0.3 / - 0.4				

CIE Pub.117, 18.58 lm Total Lamp Luminous Flux Correct (8log(F/F0) = -13.8)

C Range: 0 - 360DEG
 C Interval: 30.0DEG
 Test Speed: HIGH
 Temperature:25.3DEG
 Operators:LPC
 Test Date:2021-12-15

γ Range: 0 - 180DEG
 γ Interval: 1.0DEG
 Test System:EVERFINE GO-2000B_V1 SYSTEM V2.0.362
 Humidity:65.0%
 Test Distance:9.200m [K=1.0000]
 Remarks:

UTILIZATION FACTORS TABLE

Test:U:24.00V I:0.1905A P:4.572W PF:1.000 Freq:50.00Hz Lamp Flux:18.5753x1 lm		
NAME: SF21-24V-5050-56-DMX4SM-RGBW(4000K)-B	TYPE: 硅胶	WEIGHT:
SPEC.:	DIM.: 28mm*11.5mm	SERIAL No.:2021121508
MFR.: OLYMPIA	SUR.:1*0.016	Shielding Angle:

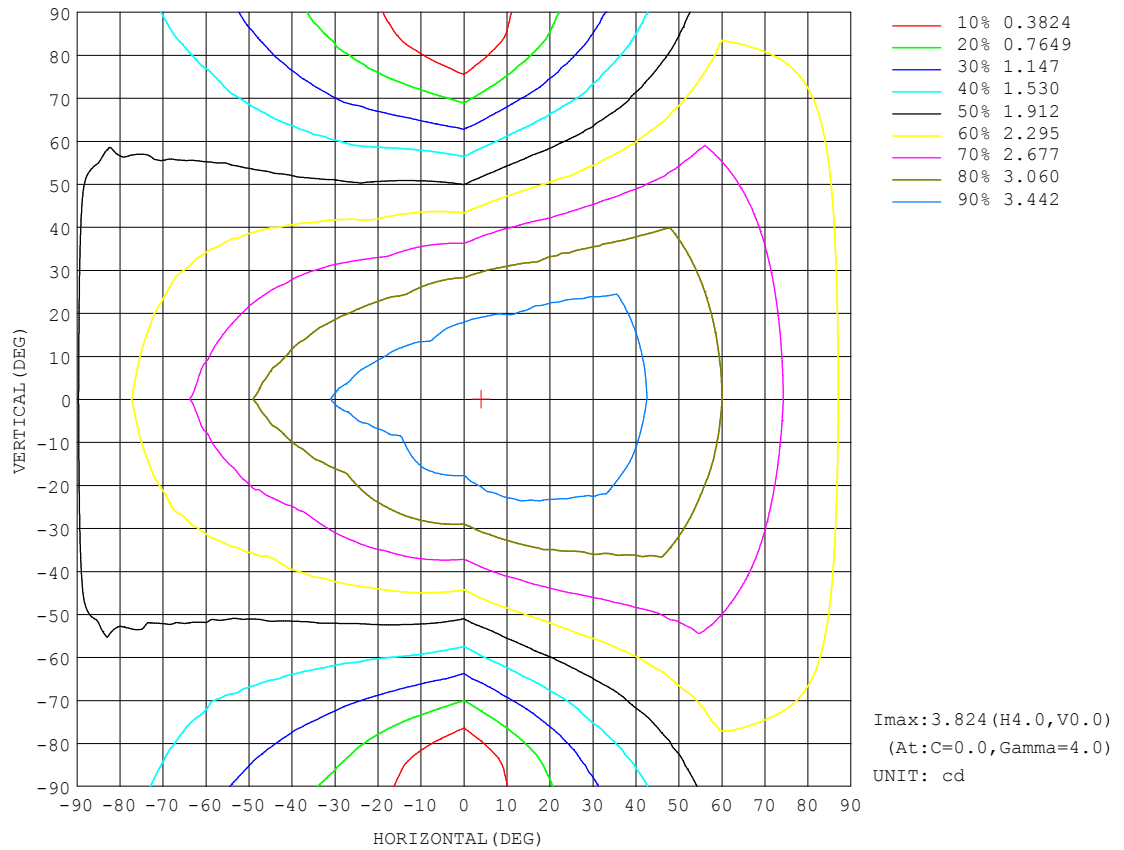
REFLECTANCE										
Ceiling	0.8	0.8	0.8	0.7	0.7	0.7	0.5	0.5	0.5	0
Walls	0.7	0.5	0.3	0.7	0.5	0.3	0.7	0.5	0.3	0
Working plane	0.2	0.2	0.2	0.2	0.2	0.2	0.2	0.2	0.2	0
ROOM INDEX	UTILIZATION FACTORS (PERCENT) $k(RI) \times RCR = 5$									
$k = 0.60$	46	34	27	45	33	26	43	32	26	19
0.80	55	42	34	54	41	34	51	40	33	25
1.00	63	50	41	61	49	41	57	49	39	30
1.25	70	57	48	67	56	47	63	53	45	35
1.50	75	63	54	72	61	53	67	57	50	39
2.00	82	71	62	79	69	61	73	64	58	45
2.50	87	76	68	83	74	66	76	69	62	49
3.00	91	81	73	87	78	71	79	72	67	52
4.00	95	87	80	91	84	78	83	77	72	57
5.00	98	91	85	94	88	82	86	81	76	60
ROOM INDEX	UF (total)									Direct
According to DIN EN 13032-2 2004			Suspended					SHRNM = 1.25		

C Range: 0 - 360DEG
C Interval: 30.0DEG
Test Speed: HIGH
Temperature:25.3DEG
Operators:LPC
Test Date:2021-12-15

γ Range: 0 - 180DEG
 γ Interval: 1.0DEG
Test System:EVERFINE GO-2000B_V1 SYSTEM V2.0.362
Humidity:65.0%
Test Distance:9.200m [K=1.0000]
Remarks:

ISOCANDELA DIAGRAM

Test:U:24.00V I:0.1905A P:4.572W PF:1.000 Freq:50.00Hz Lamp Flux:18.5753x1 lm		
NAME: SF21-24V-5050-56-DMX4SM-RGBW(4000K)-B	TYPE: 硅胶	WEIGHT:
SPEC.:	DIM.: 28mm*11.5mm	SERIAL No.:2021121508
MFR.: OLYMPIA	SUR.:1*0.016	Shielding Angle:

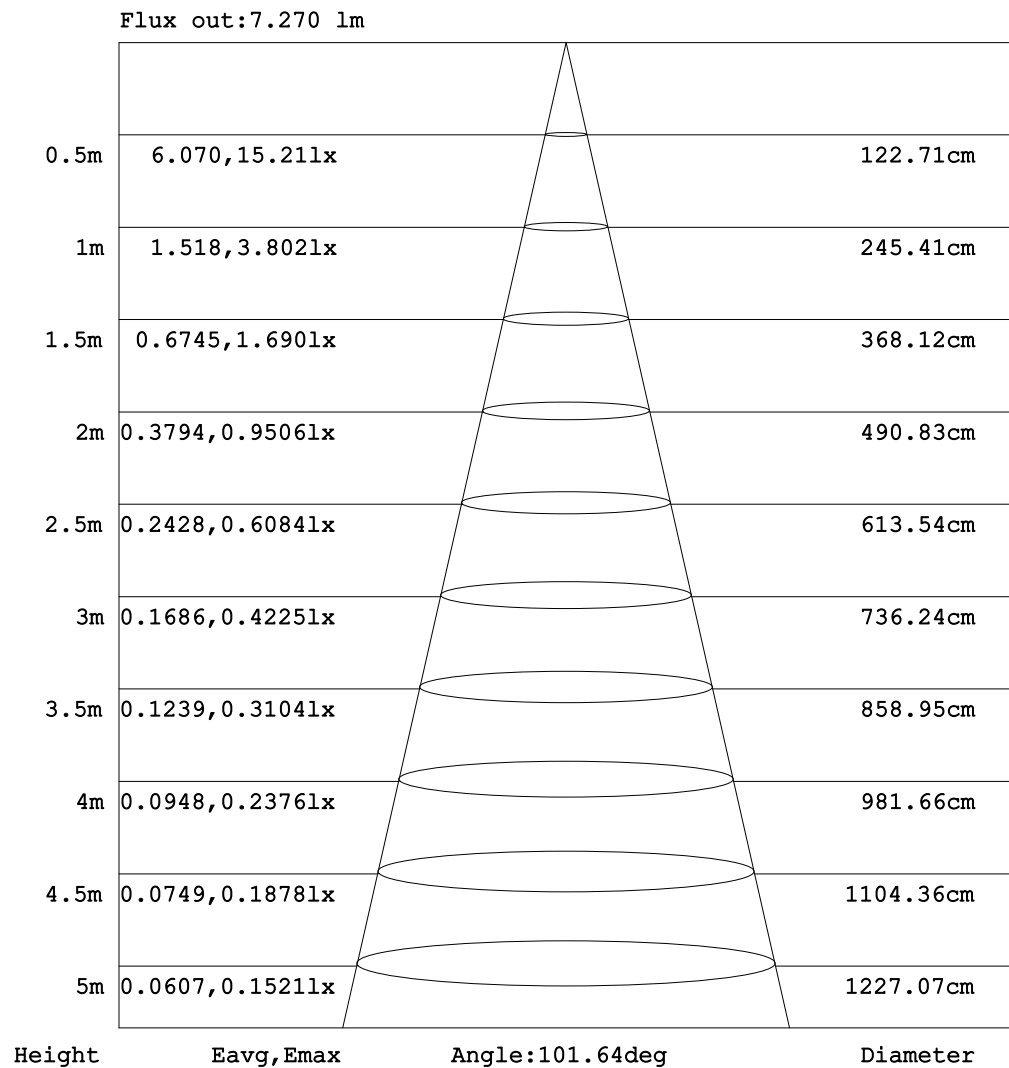


C Range: 0 - 360DEG
C Interval: 30.0DEG
Test Speed: HIGH
Temperature: 25.3DEG
Operators: LPC
Test Date: 2021-12-15

γ Range: 0 - 180DEG
 γ Interval: 1.0DEG
Test System: EVERFINE GO-2000B_V1 SYSTEM V2.0.362
Humidity: 65.0%
Test Distance: 9.200m [K=1.0000]
Remarks:

AAI Figure

Test:U:24.00V I:0.1905A P:4.572W PF:1.000 Freq:50.00Hz Lamp Flux:18.5753x1 lm		
NAME: SF21-24V-5050-56-DMX4SM-RGBW(4000K)-B	TYPE: 硅胶	WEIGHT:
SPEC.:	DIM.: 28mm*11.5mm	SERIAL No.:2021121508
MFR.: OLYMPIA	SUR.:1*0.016	Shielding Angle:



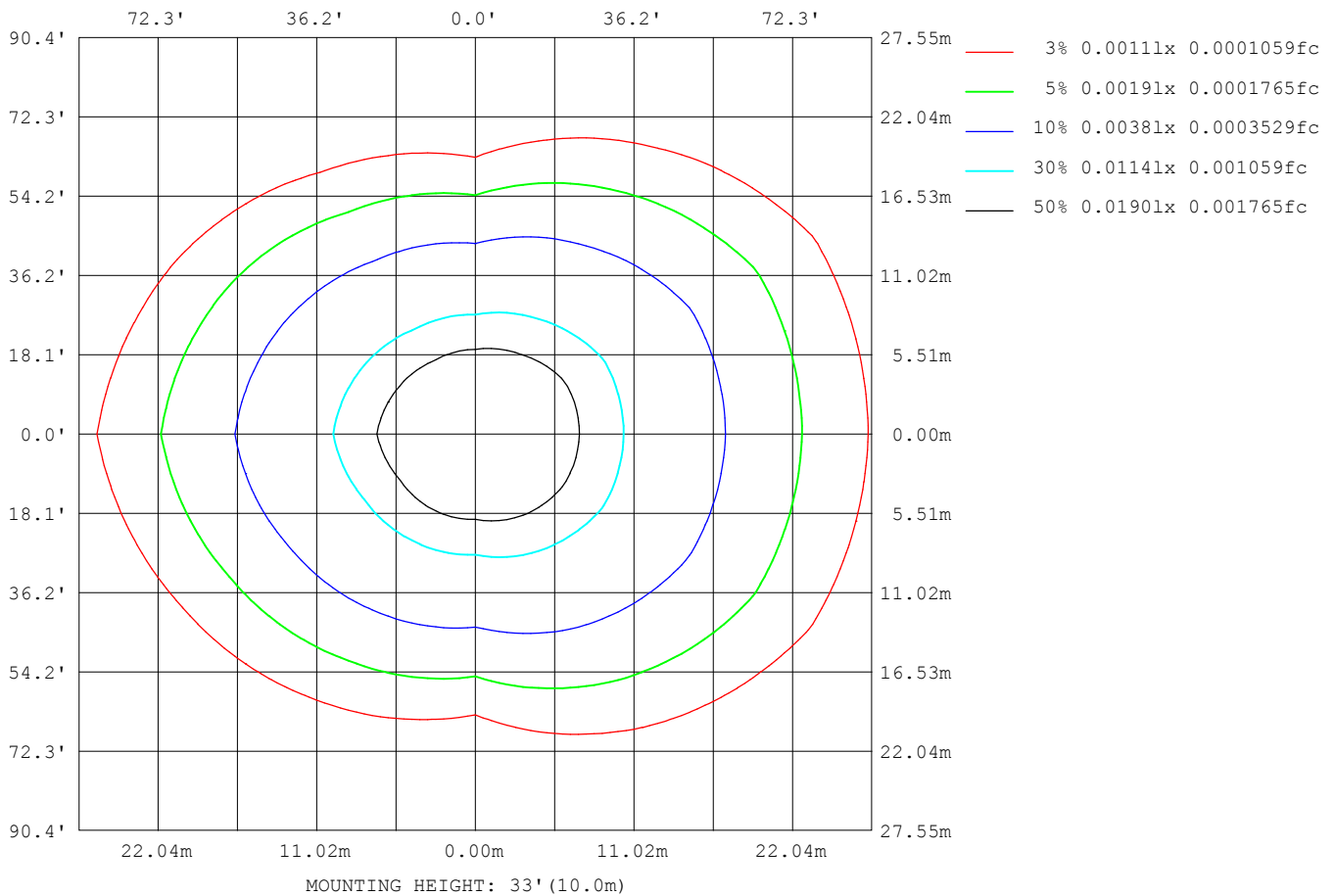
Note: The Curves indicate the illuminated area and the average illumination when the luminaire is at different distance.

C Range: 0 - 360DEG
 C Interval: 30.0DEG
 Test Speed: HIGH
 Temperature: 25.3DEG
 Operators: LPC
 Test Date: 2021-12-15

γ Range: 0 - 180DEG
 γ Interval: 1.0DEG
 Test System: EVERFINE GO-2000B_V1 SYSTEM V2.0.362
 Humidity: 65.0%
 Test Distance: 9.200m [K=1.0000]
 Remarks:

ISOLUX DIAGRAM

Test:U:24.00V I:0.1905A P:4.572W PF:1.000 Freq:50.00Hz Lamp Flux:18.5753x1 lm		
NAME: SF21-24V-5050-56-DMX4SM-RGBW(4000K)-B	TYPE: 硅胶	WEIGHT:
SPEC.:	DIM.: 28mm*11.5mm	SERIAL No.:2021121508
MFR.: OLYMPIA	SUR.:1*0.016	Shielding Angle:



C Range: 0 - 360DEG
C Interval: 30.0DEG
Test Speed: HIGH
Temperature:25.3DEG
Operators:LPC
Test Date:2021-12-15

γ Range: 0 - 180DEG
 γ Interval: 1.0DEG
Test System:EVERFINE GO-2000B_V1 SYSTEM V2.0.362
Humidity:65.0%
Test Distance:9.200m [K=1.0000]
Remarks:

LED Avg.L Report

Test:U:24.00V I:0.1905A P:4.572W PF:1.000 Freq:50.00Hz Lamp Flux:18.5753x1 lm		
NAME: SF21-24V-5050-56-DMX4SM-RGBW(4000K)-B	TYPE:硅胶	WEIGHT:
SPEC.:	DIM.: 28mm*11.5mm	SERIAL No.:2021121508
MFR.: OLYMPIA	SUR.:1*0.016	Shielding Angle:

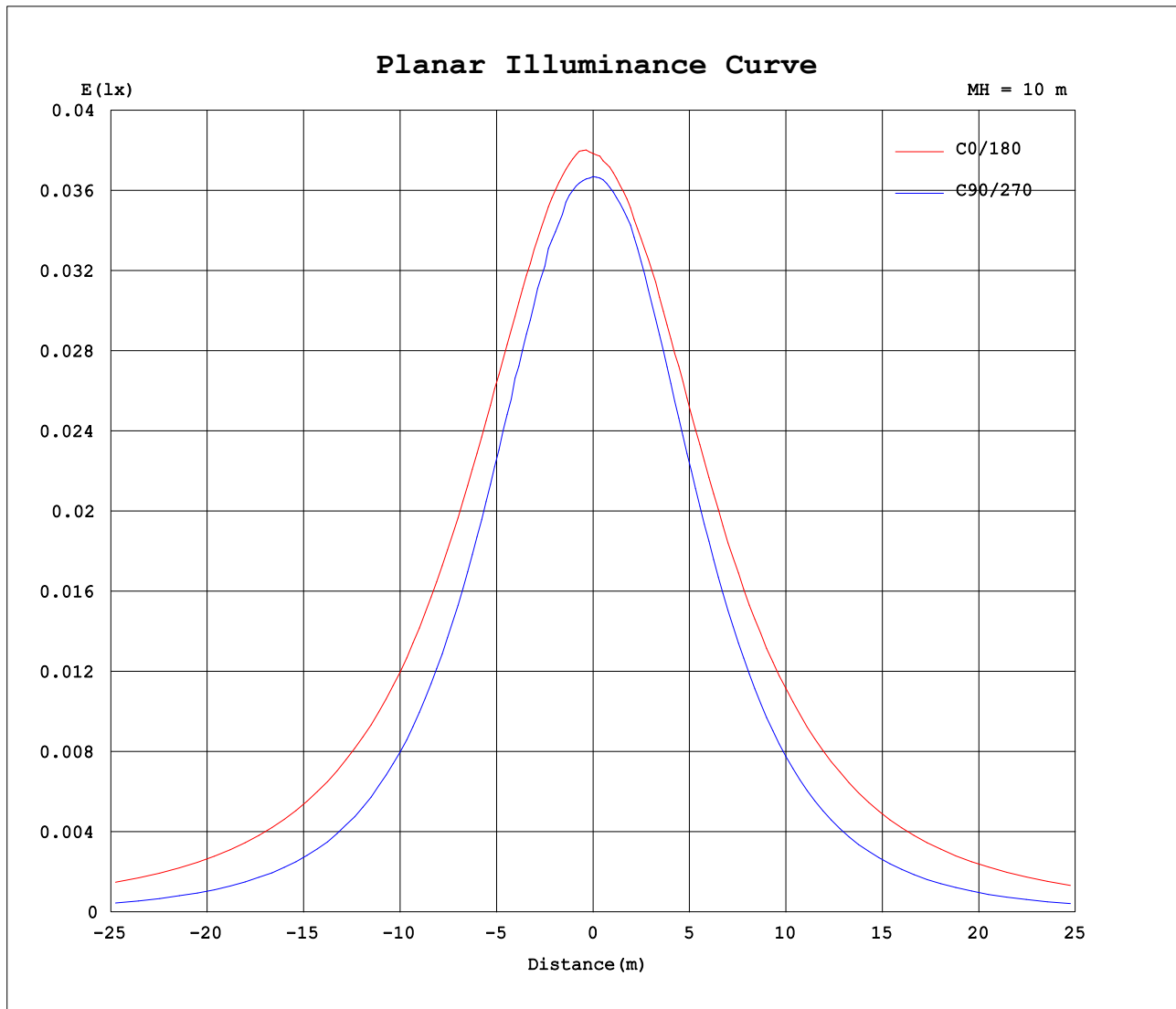
AvgL	cd/m2
L_0~180(65)av	412
L_0~180(75)av	606
L_0~180(85)av	1588
L_90~270(65)av	154
L_90~270(75)av	106
L_90~270(85)av	7
L_45(65)av	311
L_45(75)av	427
L_45(85)av	1049

Standard: GB/T 29293-2012

C Range: 0 - 360DEG
C Interval: 30.0DEG
Test Speed: HIGH
Temperature:25.3DEG
Operators:LPC
Test Date:2021-12-15

γ Range: 0 - 180DEG
γ Interval: 1.0DEG
Test System:EVERFINE GO-2000B_V1 SYSTEM V2.0.362
Humidity:65.0%
Test Distance:9.200m [K=1.0000]
Remarks:

Planar Illuminance Curve



C Range: 0 - 360DEG
C Interval: 30.0DEG
Test Speed: HIGH
Temperature: 25.3DEG
Operators: LPC
Test Date: 2021-12-15

γ Range: 0 - 180DEG
 γ Interval: 1.0DEG
Test System: EVERFINE GO-2000B_V1 SYSTEM V2.0.362
Humidity: 65.0%
Test Distance: 9.200m [K=1.0000]
Remarks:

LUMINOUS DISTRIBUTION INTENSITY DATA

Test:U:24.00V I:0.1905A P:4.572W PF:1.000 Freq:50.00Hz Lamp Flux:18.5753x1 lm		
NAME: SF21-24V-5050-56-DMX4SM-RGBW(4000K)-B	TYPE: 硅胶	WEIGHT:
SPEC.:	DIM.: 28mm*11.5mm	SERIAL No.:2021121508
MFR.: OLYMPIA	SUR.:1*0.016	Shielding Angle:

Table--1

UNIT: cd

C (DEG) γ (DEG)	0	30	60	90	120	150	180	210	240	270	300	330						
0	3.78	3.75	3.67	3.67	3.68	3.67	3.78	3.75	3.67	3.67	3.68	3.67						
5	3.82	3.75	3.68	3.66	3.69	3.63	3.76	3.70	3.64	3.66	3.68	3.72						
10	3.81	3.75	3.68	3.60	3.63	3.56	3.72	3.64	3.57	3.63	3.66	3.74						
15	3.79	3.75	3.67	3.52	3.53	3.49	3.67	3.56	3.46	3.53	3.59	3.73						
20	3.75	3.75	3.59	3.38	3.40	3.37	3.61	3.45	3.32	3.38	3.50	3.73						
25	3.70	3.67	3.49	3.23	3.25	3.24	3.56	3.32	3.16	3.19	3.37	3.72						
30	3.65	3.60	3.34	3.02	3.07	3.10	3.47	3.18	2.96	2.98	3.25	3.66						
35	3.58	3.51	3.19	2.78	2.87	2.97	3.35	3.04	2.76	2.74	3.09	3.57						
40	3.50	3.42	3.01	2.54	2.65	2.82	3.25	2.90	2.54	2.48	2.94	3.48						
45	3.39	3.34	2.82	2.26	2.42	2.66	3.16	2.74	2.33	2.20	2.74	3.39						
50	3.29	3.22	2.62	1.97	2.20	2.50	3.04	2.58	2.12	1.91	2.54	3.28						
55	3.19	3.09	2.41	1.67	1.97	2.32	2.90	2.41	1.87	1.61	2.33	3.17						
60	3.06	2.95	2.20	1.39	1.72	2.16	2.77	2.25	1.64	1.31	2.12	3.03						
65	2.94	2.83	1.99	1.08	1.51	2.00	2.64	2.09	1.43	1.00	1.91	2.89						
70	2.79	2.69	1.77	0.77	1.31	1.85	2.52	1.93	1.23	0.69	1.71	2.77						
75	2.66	2.54	1.59	0.47	1.12	1.69	2.36	1.77	1.03	0.41	1.51	2.63						
80	2.51	2.39	1.41	0.20	0.96	1.52	2.21	1.61	0.86	0.16	1.33	2.48						
85	2.36	2.25	1.24	0.02	0.81	1.39	2.07	1.47	0.72	0.00	1.17	2.34						
90	2.19	2.11	1.11	0.02	0.69	1.25	1.90	1.33	0.61	0.00	1.03	2.20						
95	2.01	1.96	1.01	0.02	0.60	1.13	1.74	1.21	0.52	0.00	0.93	2.07						
100	1.81	1.66	0.91	0.02	0.55	0.94	1.56	1.02	0.46	0.00	0.85	1.77						
105	1.64	1.56	0.76	0.03	0.38	0.88	1.43	0.96	0.33	0.00	0.72	1.68						
110	1.50	1.45	0.71	0.05	0.36	0.79	1.31	0.85	0.30	0.00	0.69	1.57						
115	1.37	1.34	0.68	0.07	0.33	0.67	1.13	0.77	0.28	0.00	0.61	1.45						
120	1.25	1.25	0.65	0.08	0.27	0.61	1.03	0.69	0.21	0.05	0.56	1.34						
125	1.14	1.14	0.56	0.10	0.25	0.53	0.93	0.60	0.19	0.05	0.51	1.23						
130	1.04	1.02	0.42	0.12	0.22	0.45	0.84	0.52	0.16	0.05	0.49	1.12						
135	0.94	0.84	0.40	0.13	0.20	0.37	0.74	0.42	0.14	0.06	0.44	0.90						
140	0.82	0.66	0.39	0.15	0.16	0.29	0.56	0.36	0.12	0.07	0.37	0.78						
145	0.67	0.51	0.37	0.16	0.11	0.25	0.53	0.31	0.07	0.09	0.32	0.61						
150	0.59	0.40	0.33	0.19	0.07	0.19	0.46	0.26	0.07	0.11	0.30	0.54						
155	0.53	0.35	0.33	0.22	0.09	0.11	0.36	0.20	0.09	0.14	0.30	0.45						
160	0.44	0.29	0.33	0.25	0.07	0.09	0.28	0.13	0.04	0.18	0.30	0.37						
165	0.36	0.25	0.32	0.26	0.05	0.07	0.23	0.08	0.04	0.21	0.29	0.30						
170	0.16	0.23	0.32	0.28	0.05	0.04	0.07	0.05	0.04	0.22	0.29	0.30						
175	0.12	0.21	0.32	0.29	0.04	0.04	0.06	0.04	0.04	0.24	0.30	0.31						
180	0.04	0.15	0.29	0.29	0.24	0.25	0.04	0.18	0.25	0.28	0.27	0.24						

C Range: 0 - 360DEG
C Interval: 30.0DEG
Test Speed: HIGH
Temperature:25.3DEG
Operators:LPC
Test Date:2021-12-15

γ Range: 0 - 180DEG
γ Interval: 1.0DEG
Test System:EVERFINE GO-2000B_V1 SYSTEM V2.0.362
Humidity:65.0%
Test Distance:9.200m [K=1.0000]
Remarks:

Photometric Data Table [cd]

G/C	0.0	30.0	60.0	90.0	120.0	150.0	180.0	210.0	240.0	270.0
0.0	3.784	3.749	3.669	3.669	3.684	3.669	3.784	3.749	3.669	3.669
3.0	3.814	3.754	3.679	3.664	3.684	3.654	3.764	3.719	3.654	3.669
6.0	3.820	3.753	3.685	3.659	3.679	3.613	3.749	3.694	3.623	3.652
9.0	3.813	3.751	3.679	3.613	3.639	3.573	3.729	3.654	3.578	3.634
12.0	3.807	3.749	3.672	3.583	3.589	3.528	3.694	3.609	3.523	3.599
15.0	3.789	3.747	3.666	3.518	3.528	3.493	3.672	3.558	3.457	3.533
18.0	3.759	3.748	3.634	3.432	3.458	3.417	3.653	3.493	3.377	3.438
21.0	3.739	3.749	3.583	3.347	3.373	3.342	3.598	3.423	3.286	3.342
24.0	3.714	3.684	3.513	3.256	3.277	3.262	3.573	3.342	3.181	3.232
27.0	3.689	3.654	3.438	3.141	3.177	3.176	3.508	3.262	3.090	3.111
30.0	3.649	3.598	3.343	3.015	3.066	3.101	3.468	3.177	2.960	2.981
33.0	3.609	3.553	3.252	2.879	2.946	3.025	3.407	3.091	2.844	2.835
36.0	3.563	3.493	3.156	2.739	2.825	2.935	3.337	3.011	2.719	2.689
39.0	3.513	3.442	3.056	2.588	2.684	2.849	3.262	2.925	2.588	2.534
42.0	3.453	3.382	2.941	2.432	2.554	2.764	3.206	2.840	2.457	2.368
45.0	3.388	3.342	2.825	2.261	2.423	2.663	3.161	2.744	2.331	2.197
48.0	3.332	3.262	2.699	2.105	2.292	2.558	3.081	2.634	2.206	2.026
51.0	3.282	3.191	2.574	1.914	2.152	2.457	3.015	2.543	2.060	1.845
54.0	3.212	3.111	2.448	1.728	2.016	2.377	2.935	2.443	1.924	1.664
57.0	3.141	3.035	2.322	1.558	1.870	2.271	2.854	2.347	1.789	1.493
60.0	3.061	2.950	2.202	1.392	1.724	2.161	2.769	2.247	1.638	1.307
63.0	2.986	2.864	2.071	1.196	1.594	2.070	2.689	2.151	1.517	1.131
66.0	2.905	2.789	1.940	1.010	1.473	1.970	2.613	2.056	1.392	0.9353
69.0	2.830	2.709	1.820	0.8337	1.347	1.879	2.538	1.960	1.256	0.7543
72.0	2.749	2.623	1.689	0.6478	1.232	1.794	2.442	1.865	1.140	0.5785
75.0	2.659	2.543	1.588	0.4670	1.121	1.693	2.362	1.774	1.030	0.4076
78.0	2.574	2.442	1.473	0.3011	1.021	1.588	2.276	1.679	0.9245	0.2567
81.0	2.483	2.367	1.367	0.1504	0.9251	1.508	2.196	1.588	0.8388	0.1209
84.0	2.383	2.286	1.272	0.0400	0.8397	1.417	2.090	1.498	0.7535	0.0154
87.0	2.297	2.196	1.186	0.0151	0.7591	1.337	1.995	1.417	0.6731	0
90.0	2.187	2.106	1.106	0.0151	0.6888	1.251	1.899	1.332	0.6081	0
93.0	2.081	2.030	1.040	0.0151	0.6384	1.181	1.809	1.257	0.5527	0
96.0	1.981	1.950	0.9853	0.0151	0.5932	1.106	1.708	1.181	0.5125	0
99.0	1.875	1.743	0.9300	0.0151	0.5531	0.9548	1.598	1.036	0.4673	0
102.0	1.739	1.633	0.8748	0.0251	0.4930	0.9247	1.512	0.9902	0.4217	0
105.0	1.639	1.563	0.7591	0.0251	0.3822	0.8844	1.432	0.9600	0.3317	0
108.0	1.558	1.508	0.7539	0.0403	0.3719	0.8392	1.352	0.9098	0.3064	0
111.0	1.473	1.432	0.7186	0.0503	0.3469	0.7538	1.276	0.8394	0.2935	0
114.0	1.387	1.367	0.6785	0.0654	0.3268	0.6984	1.156	0.7992	0.2805	0
117.0	1.317	1.306	0.6785	0.0754	0.3017	0.6431	1.085	0.7440	0.2311	0.0251
120.0	1.247	1.251	0.6484	0.0804	0.2716	0.6131	1.025	0.6887	0.2110	0.0503
123.0	1.186	1.171	0.6031	0.0955	0.2564	0.5577	0.9747	0.6334	0.2000	0.0503
126.0	1.121	1.121	0.5281	0.1016	0.2413	0.5126	0.9195	0.5831	0.1909	0.0503
129.0	1.056	1.080	0.4425	0.1107	0.2312	0.4722	0.8542	0.5379	0.1608	0.0503
132.0	0.9904	0.9447	0.4118	0.1257	0.2111	0.4370	0.8040	0.4876	0.1506	0.0503
135.0	0.9351	0.8389	0.4032	0.1332	0.1961	0.3668	0.7431	0.4224	0.1356	0.0552
138.0	0.8647	0.7184	0.3947	0.1408	0.1709	0.3365	0.6480	0.3871	0.1256	0.0603
141.0	0.7894	0.6379	0.3862	0.1501	0.1459	0.2834	0.5528	0.3469	0.0903	0.0703
144.0	0.7038	0.5325	0.3776	0.1566	0.1158	0.2592	0.5366	0.3218	0.0653	0.0905
147.0	0.6335	0.4470	0.3620	0.1710	0.0955	0.2160	0.5182	0.2916	0.0653	0.0955
150.0	0.5882	0.3985	0.3319	0.1910	0.0704	0.1909	0.4573	0.2564	0.0654	0.1135
153.0	0.5580	0.3784	0.3304	0.2211	0.0704	0.1506	0.4117	0.2213	0.0854	0.1256
156.0	0.5078	0.3516	0.3286	0.2262	0.1153	0.1155	0.3466	0.1761	0.0854	0.1407
159.0	0.4574	0.3054	0.3267	0.2463	0.1059	0.0854	0.2914	0.1408	0.0402	0.1608
162.0	0.4123	0.2722	0.3248	0.2563	0.0503	0.0957	0.2762	0.0857	0.0402	0.2060
165.0	0.3620	0.2495	0.3229	0.2639	0.0453	0.0679	0.2260	0.0754	0.0402	0.2098
168.0	0.1712	0.2367	0.3211	0.2765	0.0452	0.0402	0.0953	0.0754	0.0402	0.2136
171.0	0.1559	0.2333	0.3192	0.2827	0.0403	0.0352	0.0603	0.0402	0.0402	0.2211
174.0	0.1207	0.2160	0.3173	0.2846	0.0402	0.0352	0.0553	0.0352	0.0402	0.2361
177.0	0.1006	0.2061	0.3066	0.2865	0.0352	0.0402	0.0402	0.0352	0.0405	0.2512
180.0	0.0402	0.1457	0.2915	0.2865	0.2362	0.2463	0.0402	0.1809	0.2513	0.2814
G/C	300.0	330.0								
0.0	3.684	3.669								
3.0	3.684	3.699								
6.0	3.684	3.734								
9.0	3.669	3.733								
12.0	3.658	3.734								
15.0	3.593	3.733								
18.0	3.563	3.732								
21.0	3.487	3.730								
24.0	3.402	3.729								
27.0	3.337	3.699								
30.0	3.246	3.659								

C Range: 0 - 360DEG
 C Interval: 30.0DEG
 Test Speed: HIGH
 Temperature: 25.3DEG
 Operators: LPC
 Test Date: 2021-12-15

V Range: 0 - 180DEG
 V Interval: 1.0DEG
 Test System: EVERFINE GO-2000B_V1 SYSTEM V2.0.362
 Humidity: 65.0%
 Test Distance: 9.200m [K=1.0000]
 Remarks:

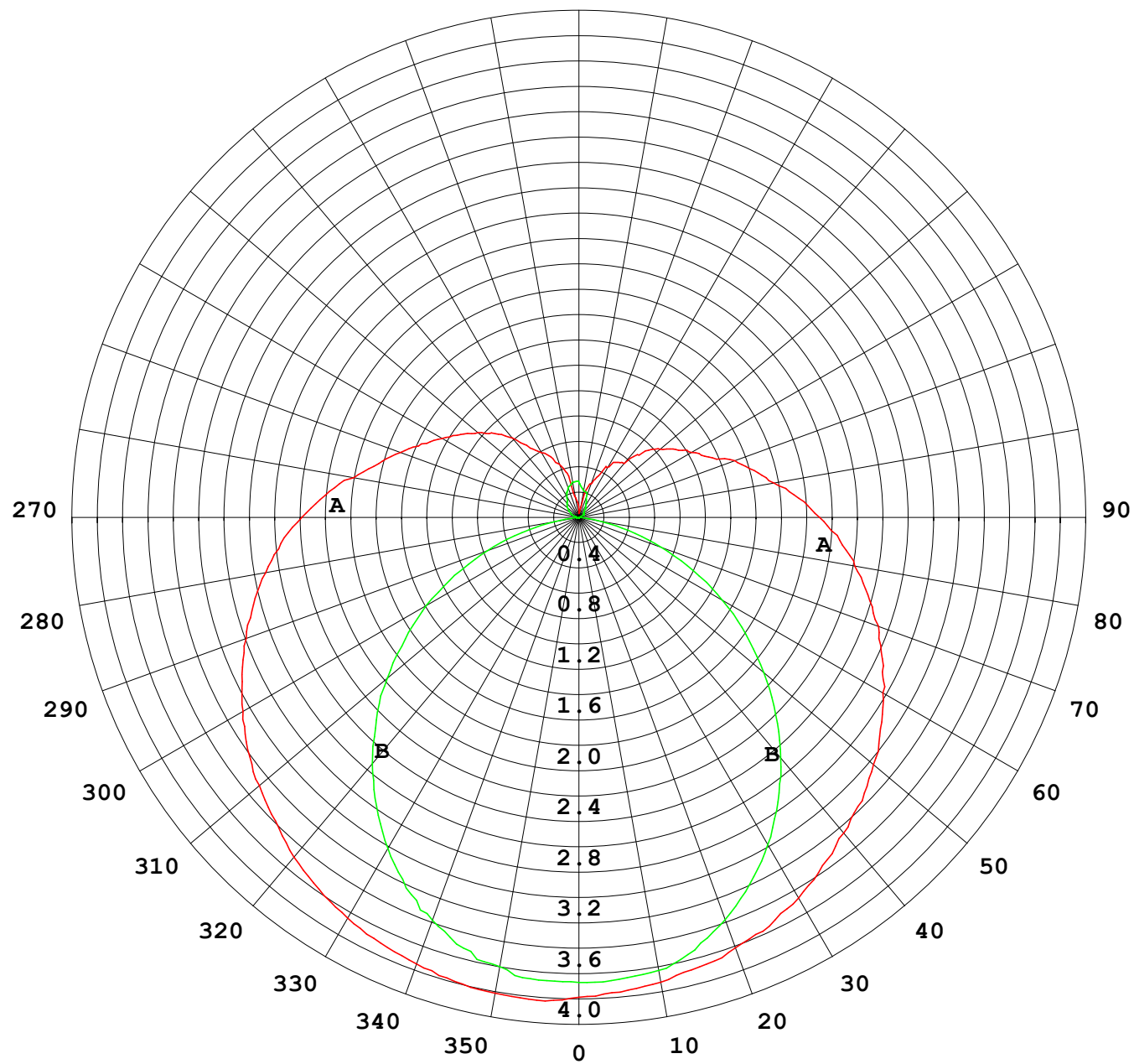
Photometric Data Table [cd]

33.0	3.151	3.614
36.0	3.050	3.553
39.0	2.955	3.498
42.0	2.854	3.448
45.0	2.739	3.392
48.0	2.618	3.327
51.0	2.502	3.257
54.0	2.377	3.192
57.0	2.241	3.116
60.0	2.115	3.031
63.0	1.995	2.950
66.0	1.874	2.875
69.0	1.744	2.799
72.0	1.613	2.719
75.0	1.512	2.634
78.0	1.412	2.538
81.0	1.296	2.458
84.0	1.191	2.367
87.0	1.110	2.287
90.0	1.030	2.202
93.0	0.9748	2.121
96.0	0.9196	2.041
99.0	0.8693	1.851
102.0	0.8238	1.744
105.0	0.7236	1.679
108.0	0.6985	1.613
111.0	0.6834	1.548
114.0	0.6678	1.478
117.0	0.5981	1.412
120.0	0.5649	1.337
123.0	0.5257	1.272
126.0	0.5025	1.216
129.0	0.4875	1.151
132.0	0.4722	1.056
135.0	0.4422	0.9000
138.0	0.3969	0.8194
141.0	0.3619	0.7441
144.0	0.3415	0.6286
147.0	0.3065	0.5931
150.0	0.3005	0.5429
153.0	0.2990	0.4977
156.0	0.2975	0.4424
159.0	0.2960	0.3871
162.0	0.2945	0.3369
165.0	0.2930	0.3016
168.0	0.2934	0.3029
171.0	0.2947	0.3043
174.0	0.2960	0.3056
177.0	0.2814	0.2966
180.0	0.2664	0.2412

C Range: 0 - 360DEG
 C Interval: 30.0DEG
 Test Speed: HIGH
 Temperature: 25.3DEG
 Operators: LPC
 Test Date: 2021-12-15

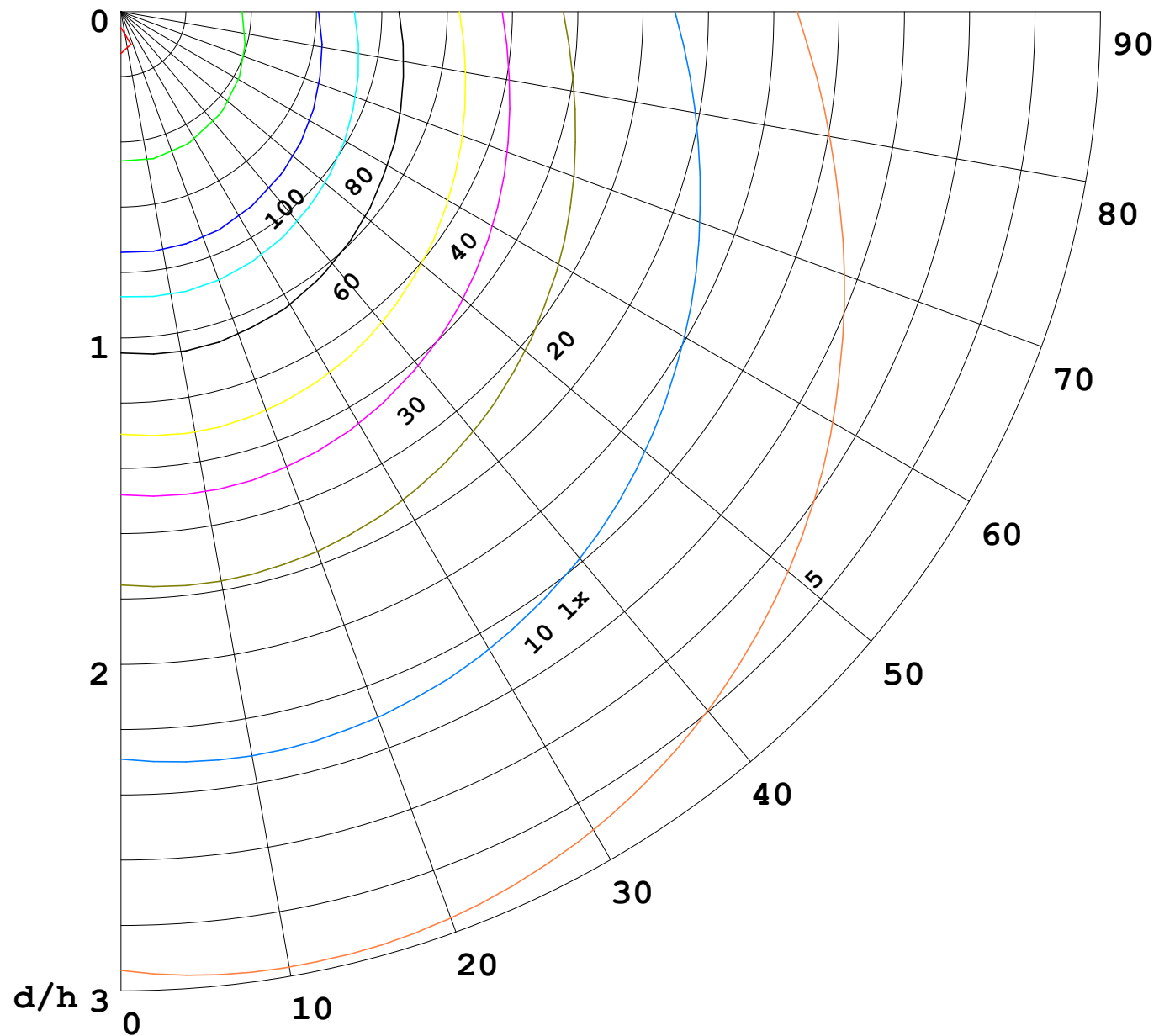
γ Range: 0 - 180DEG
 γ Interval: 1.0DEG
 Test System: EVERFINE GO-2000B_V1 SYSTEM V2.0.362
 Humidity: 65.0%
 Test Distance: 9.200m [K=1.0000]
 Remarks:

I (cd)



1000 lm

$\kappa = 1$



F = 5000 lm
 K = 0.7
 Hcc = 0.0 m
 Hfc = 0.0 m
 Eave = 100 lx

	Pcc	Pw	Pfc
—	70	50	30
—	50	30	20

