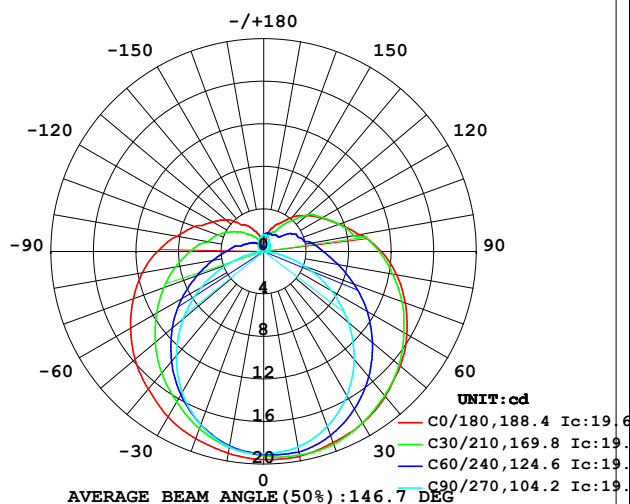


LUMINAIRE PHOTOMETRIC TEST REPORT

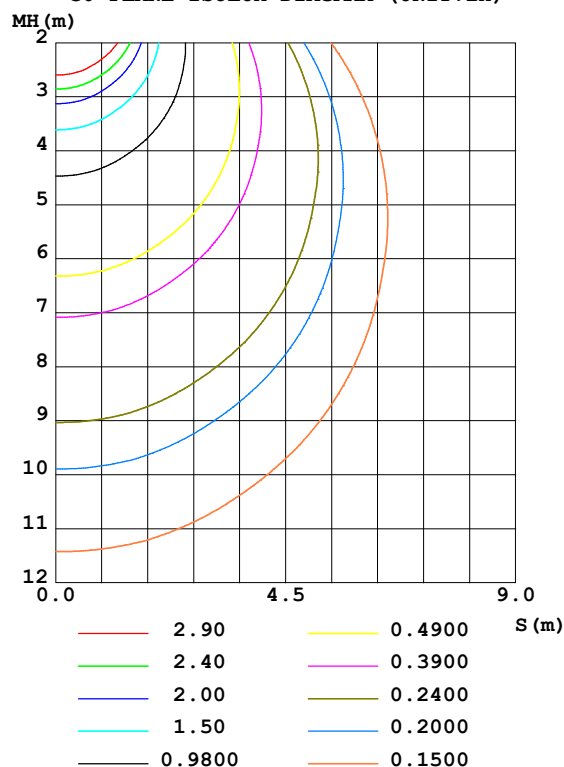
Test:U:24.00V I:0.1903A P:4.567W PF:1.000 Freq:50.00Hz Lamp Flux:97.1042x1 lm		
NAME: SF21-24V-5050-56-DMX4SM-RGBW(4000K)-G	TYPE: 硅胶	WEIGHT:
SPEC.:	DIM.: 28mm*11.5mm	SERIAL No.:2021121507
MFR.: OLYMPIA	SUR.:1*0.016	Shielding Angle:

DATA OF LAMP		PHOTOMETRIC DATA Eff: 21.26 lm/W			
MODEL	5050	I _{max} (cd)	19.60	S/MH(C0/180)	1.38
NOMINAL POWER(W)	3.75	LOR(%)	100.0	S/MH(C90/270)	1.20
RATED VOLTAGE(V)	24	TOTAL FLUX(lm)	97.104	η UP,DN(C0-180)	11.7,38.7
NOMINAL FLUX(lm)	97.1042	CIE CLASS	SEMI-D.	η UP,DN(C180-360)	11.5,38.1
LAMPS INSIDE	1	η up(%)	23.2	CIBSE SHR NOM	1.50
TEST VOLTAGE(V)	24	η down(%)	76.8	CIBSE SHR MAX	1.55

LUMINOUS INTENSITY DISTRIBUTION DIAGRAM



C0 PLANE ISOLUX DIAGRAM (UNIT:lx)



C Range: 0 - 360DEG
C Interval: 30.0DEG
Test Speed: HIGH
Temperature: 25.3DEG
Operators: LPC
Test Date: 2021-12-15

γ Range: 0 - 180DEG
γ Interval: 1.0DEG
Test System: EVERFINE GO-2000B_V1 SYSTEM V2.0.362
Humidity: 65.0%
Test Distance: 9.200m [K=1.0000]
Remarks:

ZONAL FLUX DIAGRAM

ZONAL FLUX DIAGRAM:

γ	C0	C45	C90	C135	C180	C225	C270	C315	γ	Φ zone	Φ total	%lum, lamp
10	19.55	19.29	18.67	18.54	19.26	18.61	18.65	19.19	0- 10	1.820	1.820	1.87,1.87
20	19.13	18.84	17.49	17.44	18.73	17.52	17.33	18.70	10- 20	5.257	7.076	7.29,7.29
30	18.63	17.84	15.66	15.91	17.97	15.96	15.32	17.75	20- 30	8.100	15.18	15.6,15.6
40	17.79	16.53	13.22	14.12	16.89	14.21	12.79	16.49	30- 40	10.09	25.27	26,26
50	16.77	14.98	10.41	12.18	15.79	12.27	9.899	15.01	40- 50	11.13	36.40	37.5,37.5
60	15.54	13.23	7.345	10.16	14.45	10.26	6.787	13.29	50- 60	11.20	47.60	49,49
70	14.16	11.45	4.179	8.245	13.05	8.330	3.681	11.54	60- 70	10.41	58.01	59.7,59.7
80	12.69	9.710	1.330	6.554	11.60	6.639	1.027	9.810	70- 80	9.061	67.07	69.1,69.1
90	11.06	8.235	0.2713	5.167	9.994	5.229	0.1675	8.340	80- 90	7.552	74.62	76.8,76.8
100	9.141	6.617	0.2868	4.028	8.261	4.071	0.1750	6.791	90-100	6.274	80.90	83.3,83.3
110	7.560	5.621	0.4012	3.191	6.919	3.219	0.3114	5.860	100-110	4.911	85.81	88.4,88.4
120	6.314	4.862	0.5630	2.536	5.558	2.631	0.5123	5.001	110-120	3.871	89.68	92.4,92.4
130	5.273	3.844	0.7239	2.050	4.628	2.101	0.6331	4.210	120-130	2.950	92.63	95.4,95.4
140	4.238	2.804	0.8645	1.478	3.286	1.543	0.7678	3.136	130-140	2.023	94.65	97.5,97.5
150	3.066	2.008	1.051	1.005	2.688	1.086	0.9396	2.340	140-150	1.248	95.90	98.8,98.8
160	2.353	1.794	1.322	0.6161	1.884	0.7010	1.231	1.925	150-160	0.7355	96.63	99.5,99.5
170	1.001	1.636	1.533	0.5981	0.7936	0.4515	1.402	1.736	160-170	0.3657	97.00	99.9,99.9
180	0.4423	1.309	1.588	1.480	0.4372	1.332	1.583	1.508	170-180	0.1038	97.10	100,100
DEG	LUMINOUS INTENSITY:cd									UNIT:lm		

Conical surface Flux(90deg): 30.767 lm

%lum = 31.7%

%lamp = 31.7%

Conical surface Flux(120deg): 47.595 lm

%lum = 49.0%

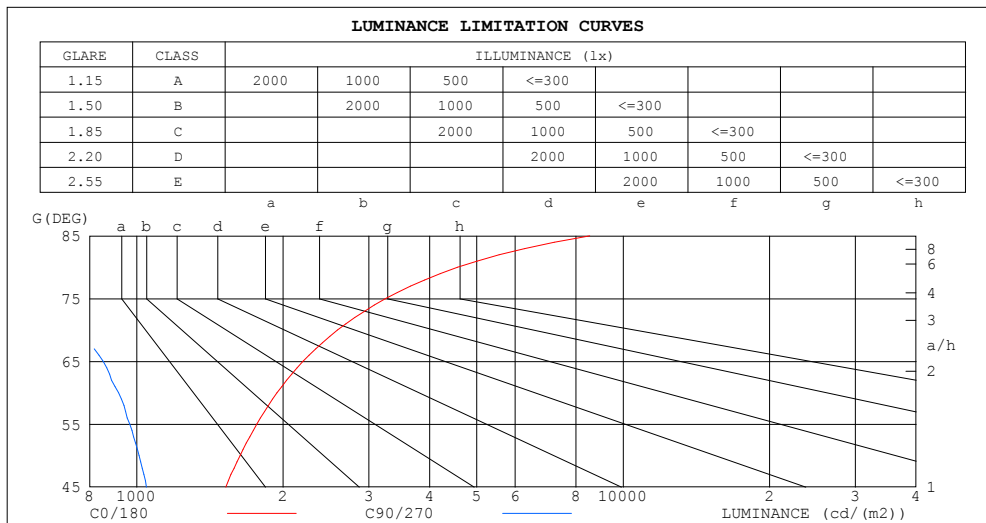
%lamp = 49.0%

C Range: 0 - 360DEG
 C Interval: 30.0DEG
 Test Speed: HIGH
 Temperature:25.3DEG
 Operators:LPC
 Test Date:2021-12-15

γ Range: 0 - 180DEG
 γ Interval: 1.0DEG
 Test System:EVERFINE GO-2000B_V1 SYSTEM V2.0.362
 Humidity:65.0%
 Test Distance:9.200m [K=1.0000]
 Remarks:

LUMINANCE LIMITATION CURVES

Test:U:24.00V I:0.1903A P:4.567W PF:1.000 Freq:50.00Hz Lamp Flux:97.1042x1 lm		
NAME: SF21-24V-5050-56-DMX4SM-RGBW(4000K)-G	TYPE: 硅胶	WEIGHT:
SPEC.:	DIM.: 28mm*11.5mm	SERIAL No.:2021121507
MFR.: OLYMPIA	SUR.:1*0.016	Shielding Angle:



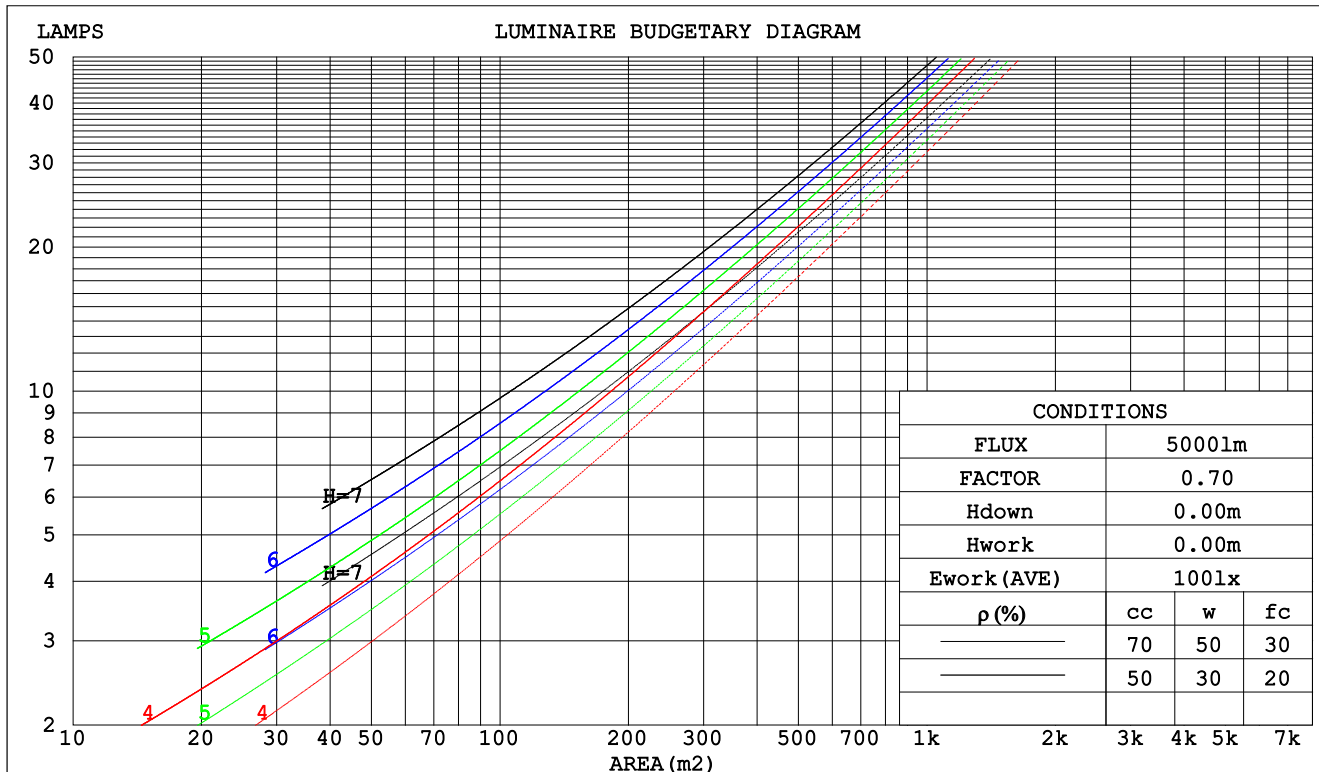
C Range: 0 - 360DEG
C Interval: 30.0DEG
Test Speed: HIGH
Temperature:25.3DEG
Operators:LPC
Test Date:2021-12-15

γ Range: 0 - 180DEG
 γ Interval: 1.0DEG
Test System:EVERFINE GO-2000B_V1 SYSTEM V2.0.362
Humidity:65.0%
Test Distance:9.200m [K=1.0000]
Remarks:

CU AND LUMINAIRE BUDGETARY ESTIMATE DIAGRAM

Test:U:24.00V I:0.1903A P:4.567W PF:1.000 Freq:50.00Hz Lamp Flux:97.1042x1 lm		
NAME: SF21-24V-5050-56-DMX4SM-RGBW(4000K)-G	TYPE: 硅胶	WEIGHT:
SPEC.:	DIM.: 28mm*11.5mm	SERIAL No.:2021121507
MFR.: OLYMPIA	SUR.:1*0.016	Shielding Angle:

pcc	80%			70%			50%			30%			10%			0
pw	50%	30%	10%	50%	30%	10%	50%	30%	10%	50%	30%	10%	50%	30%	10%	0
pfc	20%			20%			20%			20%			20%			0
RCR	RCR:Room Cavity Ratio						Coefficients of Utilization(CU)									
0.0	1.14	1.14	1.14	1.08	1.08	1.08	.98	.98	.98	.89	.89	.89	.81	.81	.81	.77
1.0	.94	.89	.84	.90	.85	.80	.81	.77	.74	.73	.70	.67	.66	.64	.61	.57
2.0	.81	.73	.66	.77	.69	.63	.69	.63	.58	.62	.58	.54	.56	.52	.49	.46
3.0	.70	.61	.54	.66	.58	.52	.60	.53	.48	.54	.49	.44	.49	.44	.40	.37
4.0	.61	.52	.45	.58	.50	.43	.53	.46	.40	.48	.42	.37	.43	.38	.34	.31
5.0	.54	.45	.38	.52	.43	.37	.47	.40	.34	.43	.36	.32	.38	.33	.29	.26
6.0	.49	.39	.33	.46	.38	.32	.42	.35	.29	.38	.32	.27	.35	.29	.25	.23
7.0	.44	.35	.28	.42	.33	.28	.38	.31	.26	.35	.29	.24	.32	.26	.22	.20
8.0	.40	.31	.25	.38	.30	.24	.35	.28	.23	.32	.26	.21	.29	.24	.20	.18
9.0	.36	.28	.22	.35	.27	.22	.32	.25	.20	.29	.23	.19	.27	.22	.18	.16
10.0	.33	.25	.20	.32	.25	.19	.29	.23	.18	.27	.21	.17	.25	.20	.16	.14



C Range: 0 - 360DEG
 C Interval: 30.0DEG
 Test Speed: HIGH
 Temperature:25.3DEG
 Operators:LPC
 Test Date:2021-12-15

γ Range: 0 - 180DEG
 γ Interval: 1.0DEG
 Test System:EVERFINE GO-2000B_V1 SYSTEM V2.0.362
 Humidity:65.0%
 Test Distance:9.200m [K=1.0000]
 Remarks:

WEC AND CCEC

Test:U:24.00V I:0.1903A P:4.567W PF:1.000 Freq:50.00Hz Lamp Flux:97.1042x1 lm		
NAME: SF21-24V-5050-56-DMX4SM-RGBW(4000K)-G	TYPE: 硅胶	WEIGHT:
SPEC.:	DIM.: 28mm*11.5mm	SERIAL No.:2021121507
MFR.: OLYMPIA	SUR.:1*0.016	Shielding Angle:

pcc	80%			70%			50%			30%			10%			0	
pw	50%	30%	10%	50%	30%	10%	50%	30%	10%	50%	30%	10%	50%	30%	10%	0	
pfc	20%			20%			20%			20%			20%			0	
RCR	RCR:Room Cavity Ratio						Wall Exitance Coeffcients (WEC)										
0.0																	
1.0	.388	.220	.070	.373	.213	.068	.347	.199	.063	.322	.186	.060	.299	.173	.056		
2.0	.333	.183	.056	.321	.177	.054	.296	.165	.051	.274	.154	.048	.253	.143	.045		
3.0	.295	.157	.047	.284	.152	.046	.262	.142	.043	.241	.132	.041	.222	.123	.038		
4.0	.265	.138	.041	.255	.133	.039	.235	.125	.037	.216	.116	.035	.199	.108	.033		
5.0	.241	.123	.036	.231	.119	.035	.213	.111	.033	.196	.104	.031	.180	.096	.029		
6.0	.221	.111	.032	.212	.107	.031	.195	.100	.029	.180	.093	.027	.165	.087	.026		
7.0	.203	.101	.029	.195	.097	.028	.180	.091	.026	.166	.085	.025	.152	.079	.023		
8.0	.189	.092	.026	.181	.089	.025	.167	.084	.024	.154	.078	.022	.142	.073	.021		
9.0	.176	.085	.024	.169	.082	.023	.156	.077	.022	.144	.072	.021	.132	.067	.019		
10.0	.164	.079	.022	.158	.076	.021	.146	.072	.020	.135	.067	.019	.124	.062	.018		

pcc	80%			70%			50%			30%			10%			0
pw	50%	30%	10%	50%	30%	10%	50%	30%	10%	50%	30%	10%	50%	30%	10%	0
pfc	20%			20%			20%			20%			20%			0
RCR	RCR:Room Cavity Ratio						Ceiling Cavity Exitance Coefficients(CCEC)									
0.0	.367	.367	.367	.314	.314	.314	.214	.214	.214	.123	.123	.123	.039	.039	.039	
1.0	.364	.333	.306	.311	.286	.263	.213	.197	.182	.122	.114	.106	.039	.037	.034	
2.0	.357	.311	.272	.306	.268	.235	.209	.185	.164	.121	.108	.096	.039	.035	.031	
3.0	.349	.294	.251	.300	.254	.217	.206	.176	.152	.119	.103	.090	.038	.033	.029	
4.0	.342	.282	.237	.293	.244	.206	.202	.170	.145	.117	.100	.086	.038	.032	.028	
5.0	.334	.272	.227	.287	.236	.198	.198	.165	.139	.114	.097	.083	.037	.032	.027	
6.0	.327	.265	.220	.281	.229	.192	.194	.160	.136	.112	.094	.081	.036	.031	.027	
7.0	.320	.258	.215	.275	.224	.187	.190	.157	.133	.110	.092	.079	.036	.030	.026	
8.0	.313	.253	.211	.269	.219	.184	.186	.154	.131	.108	.091	.078	.035	.030	.026	
9.0	.307	.248	.208	.264	.215	.182	.183	.151	.129	.107	.089	.077	.035	.029	.025	
10.0	.301	.244	.206	.259	.212	.180	.180	.149	.128	.105	.088	.076	.034	.029	.025	

C Range: 0 - 360DEG
 C Interval: 30.0DEG
 Test Speed: HIGH
 Temperature:25.3DEG
 Operators:LPC
 Test Date:2021-12-15

γ Range: 0 - 180DEG
 γ Interval: 1.0DEG
 Test System:EVERFINE GO-2000B_V1 SYSTEM V2.0.362
 Humidity:65.0%
 Test Distance:9.200m [K=1.0000]
 Remarks:

UGR(Unified Glare Rating) Table

Test:U:24.00V I:0.1903A P:4.567W PF:1.000 Freq:50.00Hz Lamp Flux:97.1042x1 lm										
NAME: SF21-24V-5050-56-DMX4SM-RGBW(4000K)-G					TYPE: 硅胶			WEIGHT:		
SPEC.:					DIM.: 28mm*11.5mm			SERIAL No.:2021121507		
MFR.: OLYMPIA					SUR.:1*0.016			Shielding Angle:		
ceiling/cavity	0.7	0.7	0.5	0.5	0.3	0.7	0.7	0.5	0.5	0.3
walls	0.5	0.3	0.5	0.3	0.3	0.5	0.3	0.5	0.3	0.3
working plane	0.2	0.2	0.2	0.2	0.2	0.2	0.2	0.2	0.2	0.2
Room dimensions	Viewed crosswise					Viewed endwise				
x = 2H y = 2H	22.4	23.7	23.0	24.3	25.0	19.7	21.0	20.2	21.6	22.2
3H	25.2	26.4	25.8	27.0	27.7	21.1	22.3	21.7	22.9	23.6
4H	26.8	27.9	27.4	28.6	29.3	21.7	22.8	22.3	23.4	24.2
6H	28.5	29.6	29.2	30.3	31.0	22.0	23.1	22.7	23.7	24.5
8H	29.5	30.5	30.1	31.2	32.0	22.1	23.1	22.8	23.8	24.6
12H	30.6	31.6	31.3	32.3	33.0	22.1	23.1	22.8	23.8	24.6
4H 2H	23.0	24.2	23.6	24.8	25.5	21.1	22.3	21.7	22.9	23.6
3H	26.1	27.1	26.8	27.8	28.6	22.9	23.9	23.6	24.6	25.4
4H	27.9	28.8	28.6	29.5	30.3	23.7	24.7	24.4	25.4	26.2
6H	29.9	30.7	30.6	31.4	32.2	24.4	25.2	25.1	25.9	26.7
8H	30.9	31.7	31.7	32.4	33.3	24.6	25.4	25.3	26.1	26.9
12H	32.2	32.9	32.9	33.6	34.5	24.7	25.4	25.4	26.2	27.0
8H 4H	28.3	29.1	29.0	29.8	30.7	25.2	25.9	25.9	26.7	27.5
6H	30.6	31.3	31.4	32.0	32.9	26.3	26.9	27.0	27.7	28.6
8H	31.9	32.5	32.7	33.3	34.2	26.8	27.4	27.5	28.1	29.0
12H	33.4	33.9	34.2	34.7	35.7	27.2	27.7	27.9	28.5	29.4
12H 4H	28.3	29.1	29.1	29.8	30.7	25.6	26.4	26.4	27.1	28.0
6H	30.8	31.3	31.5	32.1	33.0	27.0	27.6	27.8	28.4	29.3
8H	32.2	32.7	33.0	33.5	34.4	27.8	28.3	28.5	29.1	30.0
Variations with the observer position at spacings:										
S = 1.0H	+ 0.1 / - 0.1					+ 0.1 / - 0.1				
1.5H	+ 0.2 / - 0.3					+ 0.2 / - 0.3				
2.0H	+ 0.3 / - 0.4					+ 0.3 / - 0.4				

CIE Pub.117, 97.10 lm Total Lamp Luminous Flux Correct (8log(F/F0) = -8.1)

C Range: 0 - 360DEG
 C Interval: 30.0DEG
 Test Speed: HIGH
 Temperature:25.3DEG
 Operators:LPC
 Test Date:2021-12-15

γ Range: 0 - 180DEG
 γ Interval: 1.0DEG
 Test System:EVERFINE GO-2000B_V1 SYSTEM V2.0.362
 Humidity:65.0%
 Test Distance:9.200m [K=1.0000]
 Remarks:

UTILIZATION FACTORS TABLE

Test:U:24.00V I:0.1903A P:4.567W PF:1.000 Freq:50.00Hz Lamp Flux:97.1042x1 lm		
NAME: SF21-24V-5050-56-DMX4SM-RGBW(4000K)-G	TYPE: 硅胶	WEIGHT:
SPEC.:	DIM.: 28mm*11.5mm	SERIAL No.:2021121507
MFR.: OLYMPIA	SUR.:1*0.016	Shielding Angle:

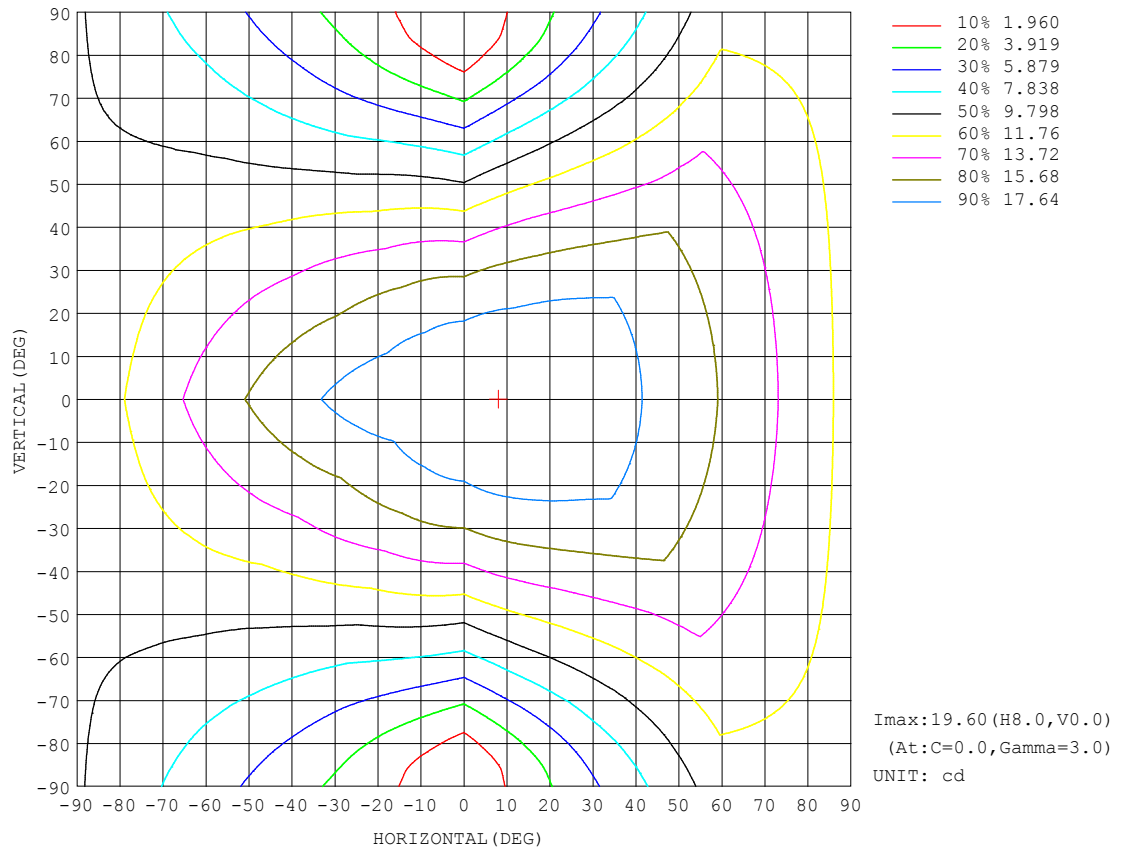
REFLECTANCE										
Ceiling	0.8	0.8	0.8	0.7	0.7	0.7	0.5	0.5	0.5	0
Walls	0.7	0.5	0.3	0.7	0.5	0.3	0.7	0.5	0.3	0
Working plane	0.2	0.2	0.2	0.2	0.2	0.2	0.2	0.2	0.2	0
ROOM INDEX	UTILIZATION FACTORS (PERCENT) $k(RI) \times RCR = 5$									
$k = 0.60$	46	34	26	45	33	26	43	32	26	19
0.80	55	42	34	53	41	33	50	39	32	24
1.00	63	50	41	61	48	40	57	48	39	30
1.25	70	57	48	67	55	47	62	52	45	35
1.50	75	62	54	72	60	52	66	57	50	39
2.00	82	71	62	79	68	61	72	64	57	45
2.50	87	76	68	83	73	66	76	68	62	48
3.00	90	81	73	86	78	71	79	72	66	52
4.00	95	87	80	91	84	77	83	77	72	56
5.00	98	91	85	94	87	82	85	80	76	59
ROOM INDEX	UF (total)									Direct
According to DIN EN 13032-2 2004			Suspended					SHRNM = 1.25		

C Range: 0 - 360DEG
C Interval: 30.0DEG
Test Speed: HIGH
Temperature:25.3DEG
Operators:LPC
Test Date:2021-12-15

γ Range: 0 - 180DEG
 γ Interval: 1.0DEG
Test System:EVERFINE GO-2000B_V1 SYSTEM V2.0.362
Humidity:65.0%
Test Distance:9.200m [K=1.0000]
Remarks:

ISOCANDELA DIAGRAM

Test:U:24.00V I:0.1903A P:4.567W PF:1.000 Freq:50.00Hz Lamp Flux:97.1042x1 lm		
NAME: SF21-24V-5050-56-DMX4SM-RGBW(4000K)-G	TYPE: 硅胶	WEIGHT:
SPEC.:	DIM.: 28mm*11.5mm	SERIAL No.:2021121507
MFR.: OLYMPIA	SUR.:1*0.016	Shielding Angle:

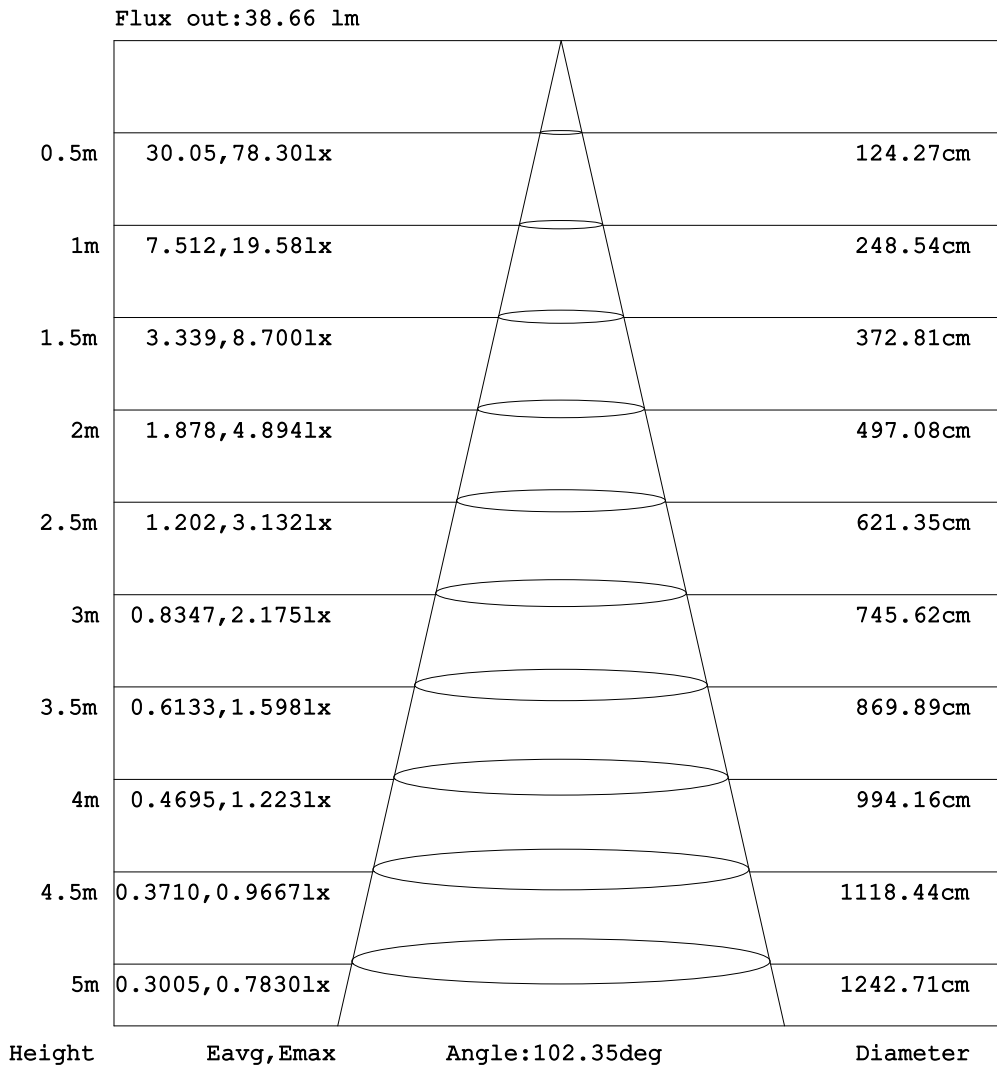


C Range: 0 - 360DEG
C Interval: 30.0DEG
Test Speed: HIGH
Temperature:25.3DEG
Operators:LPC
Test Date:2021-12-15

γ Range: 0 - 180DEG
 γ Interval: 1.0DEG
Test System:EVERFINE GO-2000B_V1 SYSTEM V2.0.362
Humidity:65.0%
Test Distance:9.200m [K=1.0000]
Remarks:

AAI Figure

Test:U:24.00V I:0.1903A P:4.567W PF:1.000 Freq:50.00Hz Lamp Flux:97.1042x1 lm		
NAME: SF21-24V-5050-56-DMX4SM-RGBW(4000K)-G	TYPE: 硅胶	WEIGHT:
SPEC.:	DIM.: 28mm*11.5mm	SERIAL No.:2021121507
MFR.: OLYMPIA	SUR.:1*0.016	Shielding Angle:



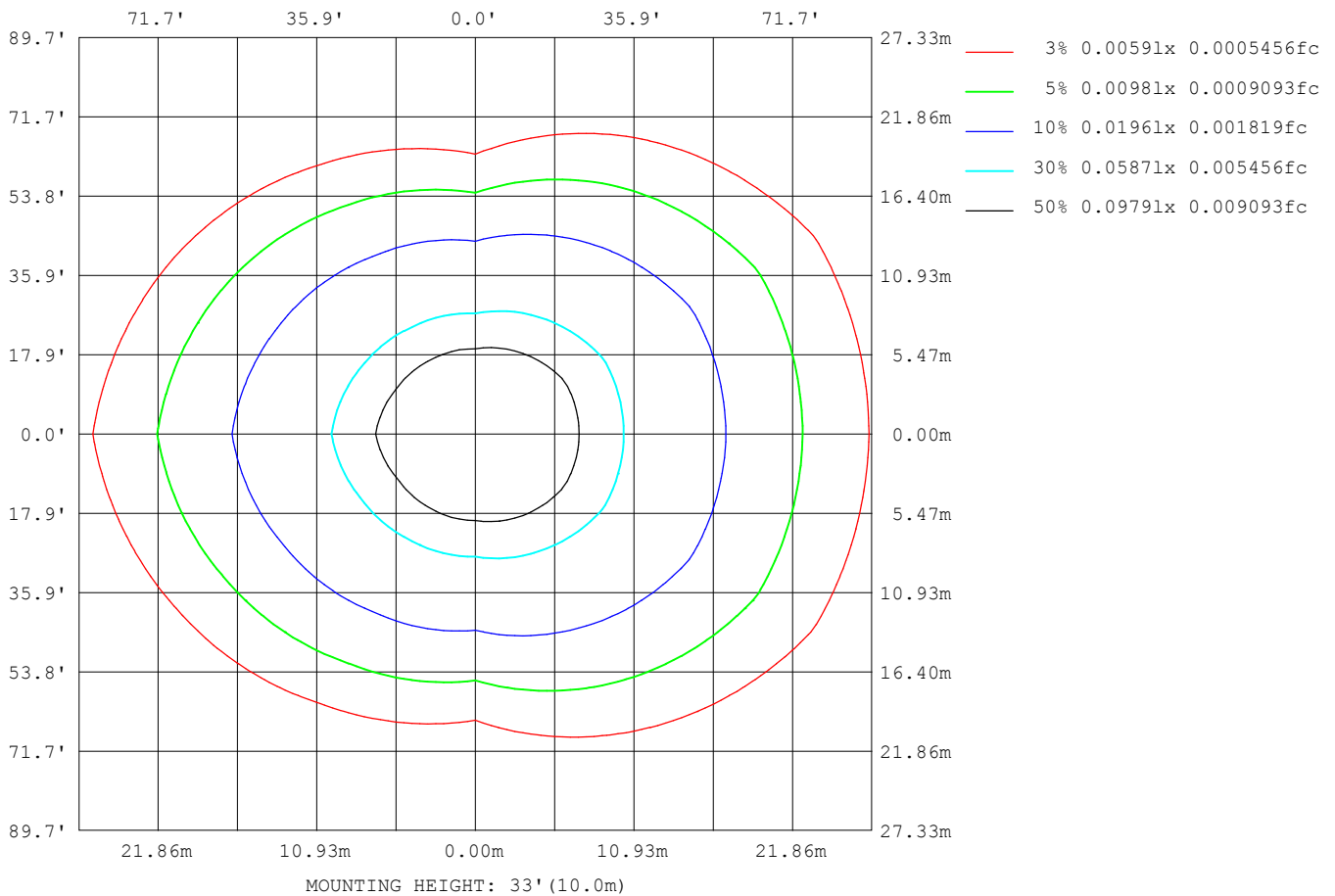
Note:The Curves indicate the illuminated area and the average illumination when the luminaire is at different distance.

C Range: 0 - 360DEG
C Interval: 30.0DEG
Test Speed: HIGH
Temperature:25.3DEG
Operators:LPC
Test Date:2021-12-15

γ Range: 0 - 180DEG
γ Interval: 1.0DEG
Test System:EVERFINE GO-2000B_V1 SYSTEM V2.0.362
Humidity:65.0%
Test Distance:9.200m [K=1.0000]
Remarks:

ISOLUX DIAGRAM

Test:U:24.00V I:0.1903A P:4.567W PF:1.000 Freq:50.00Hz Lamp Flux:97.1042x1 lm		
NAME: SF21-24V-5050-56-DMX4SM-RGBW(4000K)-G	TYPE: 硅胶	WEIGHT:
SPEC.:	DIM.: 28mm*11.5mm	SERIAL No.:2021121507
MFR.: OLYMPIA	SUR.:1*0.016	Shielding Angle:



C Range: 0 - 360DEG
C Interval: 30.0DEG
Test Speed: HIGH
Temperature:25.3DEG
Operators:LPC
Test Date:2021-12-15

γ Range: 0 - 180DEG
 γ Interval: 1.0DEG
Test System:EVERFINE GO-2000B_V1 SYSTEM V2.0.362
Humidity:65.0%
Test Distance:9.200m [K=1.0000]
Remarks:

LED Avg.L Report

Test:U:24.00V I:0.1903A P:4.567W PF:1.000 Freq:50.00Hz Lamp Flux:97.1042x1 lm		
NAME: SF21-24V-5050-56-DMX4SM-RGBW(4000K)-G	TYPE:硅胶	WEIGHT:
SPEC.:	DIM.: 28mm*11.5mm	SERIAL No.:2021121507
MFR.: OLYMPIA	SUR.:1*0.016	Shielding Angle:

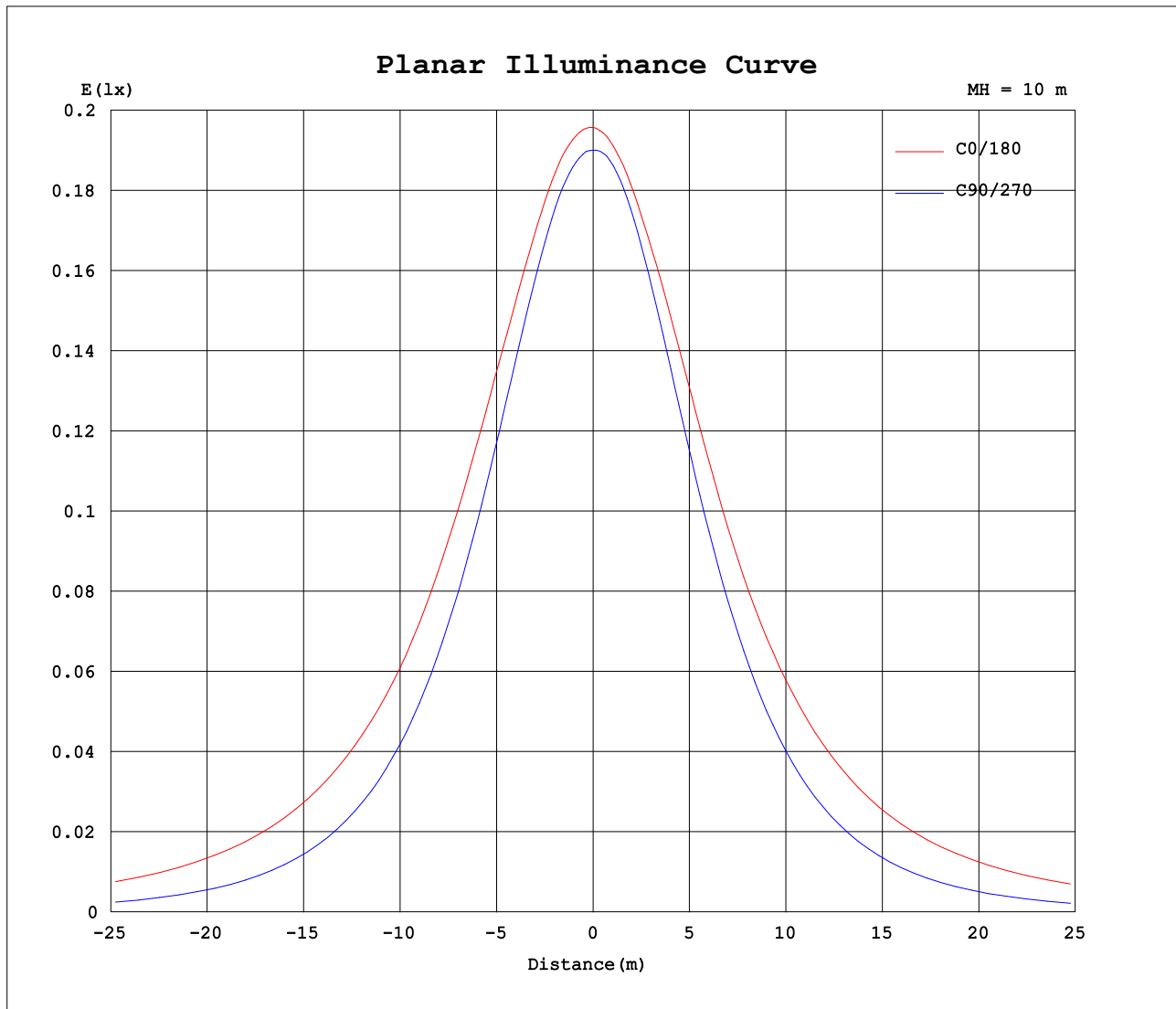
AvgL	cd/m2
L_0~180(65)av	2116
L_0~180(75)av	3112
L_0~180(85)av	8147
L_90~270(65)av	814
L_90~270(75)av	591
L_90~270(85)av	220
L_45(65)av	1614
L_45(75)av	2216
L_45(85)av	5461

Standard: GB/T 29293-2012

C Range: 0 - 360DEG
 C Interval: 30.0DEG
 Test Speed: HIGH
 Temperature:25.3DEG
 Operators:LPC
 Test Date:2021-12-15

γ Range: 0 - 180DEG
 γ Interval: 1.0DEG
 Test System:EVERFINE GO-2000B_V1 SYSTEM V2.0.362
 Humidity:65.0%
 Test Distance:9.200m [K=1.0000]
 Remarks:

Planar Illuminance Curve



C Range: 0 - 360DEG
C Interval: 30.0DEG
Test Speed: HIGH
Temperature: 25.3DEG
Operators: LPC
Test Date: 2021-12-15

γ Range: 0 - 180DEG
 γ Interval: 1.0DEG
Test System: EVERFINE GO-2000B_V1 SYSTEM V2.0.362
Humidity: 65.0%
Test Distance: 9.200m [K=1.0000]
Remarks:

LUMINOUS DISTRIBUTION INTENSITY DATA

Test:U:24.00V I:0.1903A P:4.567W PF:1.000 Freq:50.00Hz Lamp Flux:97.1042x1 lm		
NAME: SF21-24V-5050-56-DMX4SM-RGBW(4000K)-G	TYPE:硅胶	WEIGHT:
SPEC.:	DIM.: 28mm*11.5mm	SERIAL No.:2021121507
MFR.: OLYMPIA	SUR.:1*0.016	Shielding Angle:

Table--1

UNIT: cd

C (DEG) γ (DEG)	0	30	60	90	120	150	180	210	240	270	300	330						
0	19.6	19.2	19.1	19.0	19.1	19.1	19.6	19.2	19.1	19.0	19.1	19.1						
5	19.6	19.4	19.2	18.9	18.9	18.8	19.5	19.0	18.9	19.0	19.1	19.3						
10	19.5	19.4	19.1	18.7	18.6	18.5	19.3	18.7	18.6	18.7	19.0	19.4						
15	19.4	19.4	18.9	18.2	18.0	18.1	19.0	18.3	18.0	18.1	18.7	19.3						
20	19.1	19.3	18.4	17.5	17.4	17.5	18.7	17.7	17.3	17.3	18.2	19.2						
25	18.9	19.0	17.8	16.7	16.6	16.8	18.4	17.1	16.5	16.4	17.5	19.0						
30	18.6	18.6	17.1	15.7	15.7	16.2	18.0	16.3	15.6	15.3	16.8	18.7						
35	18.3	18.1	16.3	14.5	14.6	15.5	17.4	15.7	14.6	14.1	16.1	18.2						
40	17.8	17.7	15.4	13.2	13.5	14.7	16.9	14.9	13.5	12.8	15.2	17.8						
45	17.2	17.2	14.4	11.8	12.4	13.9	16.4	14.1	12.4	11.4	14.3	17.3						
50	16.8	16.6	13.4	10.4	11.3	13.1	15.8	13.3	11.2	9.90	13.3	16.7						
55	16.2	16.0	12.3	8.88	10.1	12.2	15.1	12.5	10.1	8.37	12.2	16.1						
60	15.5	15.2	11.2	7.34	8.93	11.4	14.5	11.6	8.90	6.79	11.2	15.4						
65	14.8	14.6	10.1	5.77	7.77	10.6	13.8	10.8	7.74	5.23	10.1	14.7						
70	14.2	13.8	9.06	4.18	6.72	9.77	13.1	10.00	6.66	3.68	9.02	14.1						
75	13.4	13.1	8.03	2.66	5.77	8.97	12.3	9.22	5.70	2.23	7.97	13.3						
80	12.7	12.3	7.10	1.33	4.93	8.18	11.6	8.41	4.86	1.03	7.05	12.6						
85	11.9	11.6	6.27	0.39	4.20	7.41	10.8	7.65	4.13	0.23	6.22	11.9						
90	11.1	10.9	5.61	0.27	3.62	6.71	9.99	6.92	3.54	0.17	5.55	11.1						
95	10.2	10.2	5.11	0.26	3.22	6.12	9.21	6.29	3.12	0.17	5.04	10.4						
100	9.14	8.59	4.64	0.29	2.91	5.15	8.26	5.33	2.81	0.18	4.62	8.96						
105	8.32	8.14	3.90	0.37	2.12	4.86	7.56	5.01	2.12	0.21	3.97	8.51						
110	7.56	7.53	3.71	0.40	2.00	4.39	6.92	4.48	1.95	0.31	3.82	7.90						
115	6.89	6.94	3.51	0.48	1.80	3.85	6.07	4.14	1.75	0.43	3.37	7.28						
120	6.31	6.41	3.32	0.56	1.61	3.46	5.56	3.69	1.57	0.51	3.27	6.73						
125	5.79	5.92	2.95	0.65	1.47	3.11	5.09	3.26	1.42	0.56	2.87	6.22						
130	5.27	5.38	2.31	0.72	1.36	2.74	4.63	2.89	1.31	0.63	2.78	5.64						
135	4.78	4.40	1.98	0.79	1.20	2.30	4.04	2.39	1.17	0.69	2.56	4.71						
140	4.24	3.65	1.96	0.86	1.00	1.95	3.29	2.07	1.01	0.77	2.24	4.03						
145	3.57	2.94	1.93	0.91	0.80	1.70	3.06	1.83	0.83	0.85	2.00	3.20						
150	3.07	2.22	1.80	1.05	0.61	1.40	2.69	1.54	0.63	0.94	1.79	2.89						
155	2.78	2.03	1.79	1.20	0.78	1.07	2.17	1.23	0.69	1.09	1.80	2.42						
160	2.35	1.79	1.79	1.32	0.52	0.71	1.88	0.92	0.49	1.23	1.82	2.03						
165	1.96	1.54	1.78	1.44	0.45	0.87	1.58	0.63	0.46	1.35	1.84	1.69						
170	1.00	1.51	1.76	1.53	0.44	0.76	0.79	0.47	0.44	1.40	1.76	1.71						
175	0.80	1.42	1.66	1.56	0.44	0.49	0.57	0.46	0.43	1.50	1.68	1.69						
180	0.44	1.03	1.59	1.59	1.52	1.44	0.44	1.17	1.50	1.58	1.57	1.45						

C Range: 0 - 360DEG
C Interval: 30.0DEG
Test Speed: HIGH
Temperature:25.3DEG
Operators:LPC
Test Date:2021-12-15

γ Range: 0 - 180DEG
γ Interval: 1.0DEG
Test System:EVERFINE GO-2000B_V1 SYSTEM V2.0.362
Humidity:65.0%
Test Distance:9.200m [K=1.0000]
Remarks:

Photometric Data Table [cd]

G/C	0.0	30.0	60.0	90.0	120.0	150.0	180.0	210.0	240.0	270.0
0.0	19.58	19.23	19.09	19.01	19.08	19.06	19.58	19.23	19.09	19.01
3.0	19.60	19.35	19.15	18.98	18.97	18.93	19.52	19.07	18.98	19.01
6.0	19.59	19.41	19.16	18.89	18.84	18.78	19.42	18.92	18.84	18.93
9.0	19.58	19.43	19.15	18.75	18.65	18.58	19.31	18.75	18.64	18.74
12.0	19.49	19.44	19.05	18.49	18.38	18.35	19.16	18.53	18.37	18.45
15.0	19.36	19.42	18.86	18.18	18.04	18.07	18.99	18.26	18.02	18.09
18.0	19.22	19.35	18.61	17.79	17.66	17.75	18.84	17.95	17.61	17.66
21.0	19.08	19.23	18.29	17.34	17.22	17.39	18.67	17.60	17.16	17.15
24.0	18.95	19.05	17.93	16.85	16.75	16.99	18.47	17.20	16.67	16.60
27.0	18.82	18.84	17.53	16.27	16.23	16.56	18.24	16.79	16.13	15.99
30.0	18.63	18.60	17.08	15.66	15.66	16.15	17.97	16.35	15.57	15.32
33.0	18.42	18.34	16.61	14.98	15.05	15.75	17.65	15.94	14.97	14.60
36.0	18.17	18.05	16.10	14.26	14.44	15.31	17.32	15.53	14.36	13.85
39.0	17.89	17.78	15.56	13.48	13.77	14.86	16.97	15.09	13.70	13.05
42.0	17.58	17.50	14.98	12.70	13.10	14.40	16.68	14.62	13.02	12.23
45.0	17.24	17.19	14.39	11.85	12.44	13.88	16.37	14.15	12.35	11.39
48.0	16.97	16.86	13.77	10.98	11.77	13.39	16.03	13.64	11.69	10.50
51.0	16.67	16.49	13.14	10.10	11.06	12.89	15.67	13.13	11.01	9.592
54.0	16.32	16.09	12.50	9.190	10.36	12.37	15.28	12.63	10.32	8.692
57.0	15.95	15.66	11.87	8.270	9.642	11.87	14.87	12.12	9.607	7.752
60.0	15.54	15.22	11.23	7.345	8.928	11.40	14.45	11.63	8.903	6.787
63.0	15.13	14.81	10.58	6.390	8.220	10.90	14.05	11.14	8.194	5.868
66.0	14.72	14.42	9.928	5.445	7.546	10.42	13.62	10.65	7.516	4.918
69.0	14.30	14.01	9.275	4.490	6.908	9.930	13.20	10.16	6.868	3.978
72.0	13.88	13.54	8.612	3.550	6.325	9.447	12.76	9.686	6.265	3.094
75.0	13.44	13.09	8.033	2.662	5.767	8.975	12.33	9.224	5.697	2.234
78.0	13.00	12.62	7.465	1.812	5.254	8.487	11.89	8.731	5.180	1.459
81.0	12.54	12.17	6.917	1.109	4.776	8.030	11.45	8.258	4.707	0.8108
84.0	12.06	11.75	6.420	0.5313	4.334	7.557	10.98	7.791	4.260	0.2830
87.0	11.59	11.30	5.987	0.2788	3.952	7.125	10.50	7.339	3.874	0.1811
90.0	11.06	10.86	5.610	0.2713	3.625	6.708	9.994	6.917	3.542	0.1675
93.0	10.53	10.43	5.298	0.2638	3.363	6.351	9.512	6.539	3.271	0.1697
96.0	10.00	10.01	5.022	0.2664	3.152	6.010	9.044	6.163	3.050	0.1720
99.0	9.486	9.043	4.735	0.2765	2.971	5.191	8.466	5.396	2.859	0.1743
102.0	8.812	8.442	4.434	0.3420	2.641	5.035	7.974	5.207	2.586	0.1909
105.0	8.324	8.141	3.901	0.3720	2.117	4.864	7.562	5.006	2.121	0.2060
108.0	7.862	7.769	3.835	0.3891	2.026	4.648	7.175	4.785	2.055	0.2762
111.0	7.420	7.412	3.644	0.4072	1.951	4.211	6.797	4.428	1.899	0.3465
114.0	7.012	7.055	3.493	0.4675	1.835	3.959	6.180	4.232	1.789	0.3970
117.0	6.660	6.713	3.448	0.5178	1.714	3.663	5.864	3.961	1.673	0.4471
120.0	6.314	6.407	3.318	0.5630	1.609	3.462	5.558	3.690	1.573	0.5123
123.0	5.992	6.106	3.101	0.6183	1.543	3.241	5.276	3.428	1.467	0.5376
126.0	5.680	5.839	2.836	0.6635	1.453	3.030	5.014	3.172	1.402	0.5928
129.0	5.379	5.567	2.439	0.7088	1.393	2.814	4.723	2.961	1.322	0.6182
132.0	5.077	4.984	2.107	0.7539	1.292	2.598	4.457	2.715	1.256	0.6583
135.0	4.776	4.401	1.975	0.7942	1.201	2.296	4.038	2.394	1.171	0.6935
138.0	4.479	3.934	1.967	0.8344	1.091	2.100	3.657	2.237	1.080	0.7417
141.0	4.113	3.522	1.959	0.8746	0.9554	1.889	3.226	2.001	0.9795	0.7808
144.0	3.706	3.095	1.950	0.9047	0.8348	1.754	3.090	1.895	0.8591	0.8290
147.0	3.343	2.627	1.885	0.9352	0.7240	1.552	2.939	1.714	0.7483	0.8443
150.0	3.066	2.216	1.800	1.051	0.6134	1.397	2.688	1.543	0.6277	0.9396
153.0	2.915	2.045	1.764	1.141	0.7034	1.225	2.431	1.363	0.5836	1.025
156.0	2.705	1.975	1.794	1.216	0.8287	0.9944	2.100	1.176	0.7339	1.105
159.0	2.408	1.834	1.797	1.302	0.6607	0.7634	2.004	0.9705	0.6465	1.191
162.0	2.217	1.673	1.786	1.377	0.4524	0.6440	1.763	0.7796	0.4749	1.276
165.0	1.956	1.543	1.776	1.443	0.4494	0.8749	1.582	0.6283	0.4570	1.347
168.0	1.072	1.529	1.765	1.508	0.4451	0.8630	0.8640	0.6095	0.4391	1.377
171.0	0.9653	1.508	1.754	1.538	0.4387	0.7015	0.7533	0.4645	0.4353	1.412
174.0	0.8448	1.432	1.679	1.553	0.4323	0.5399	0.6176	0.4584	0.4315	1.472
177.0	0.6991	1.407	1.643	1.578	0.4222	0.4322	0.5172	0.4523	0.4277	1.518
180.0	0.4423	1.030	1.588	1.588	1.523	1.437	0.4372	1.166	1.498	1.583
G/C	300.0	330.0								
0.0	19.08	19.06								
3.0	19.10	19.19								
6.0	19.09	19.30								
9.0	19.03	19.36								
12.0	18.88	19.38								
15.0	18.66	19.35								
18.0	18.38	19.31								
21.0	18.04	19.19								
24.0	17.66	19.05								
27.0	17.26	18.88								
30.0	16.83	18.67								

C Range: 0 - 360DEG
 C Interval: 30.0DEG
 Test Speed: HIGH
 Temperature: 25.3DEG
 Operators: LPC
 Test Date: 2021-12-15

γ Range: 0 - 180DEG
 γ Interval: 1.0DEG
 Test System: EVERFINE GO-2000B_V1 SYSTEM V2.0.362
 Humidity: 65.0%
 Test Distance: 9.200m [K=1.0000]
 Remarks:

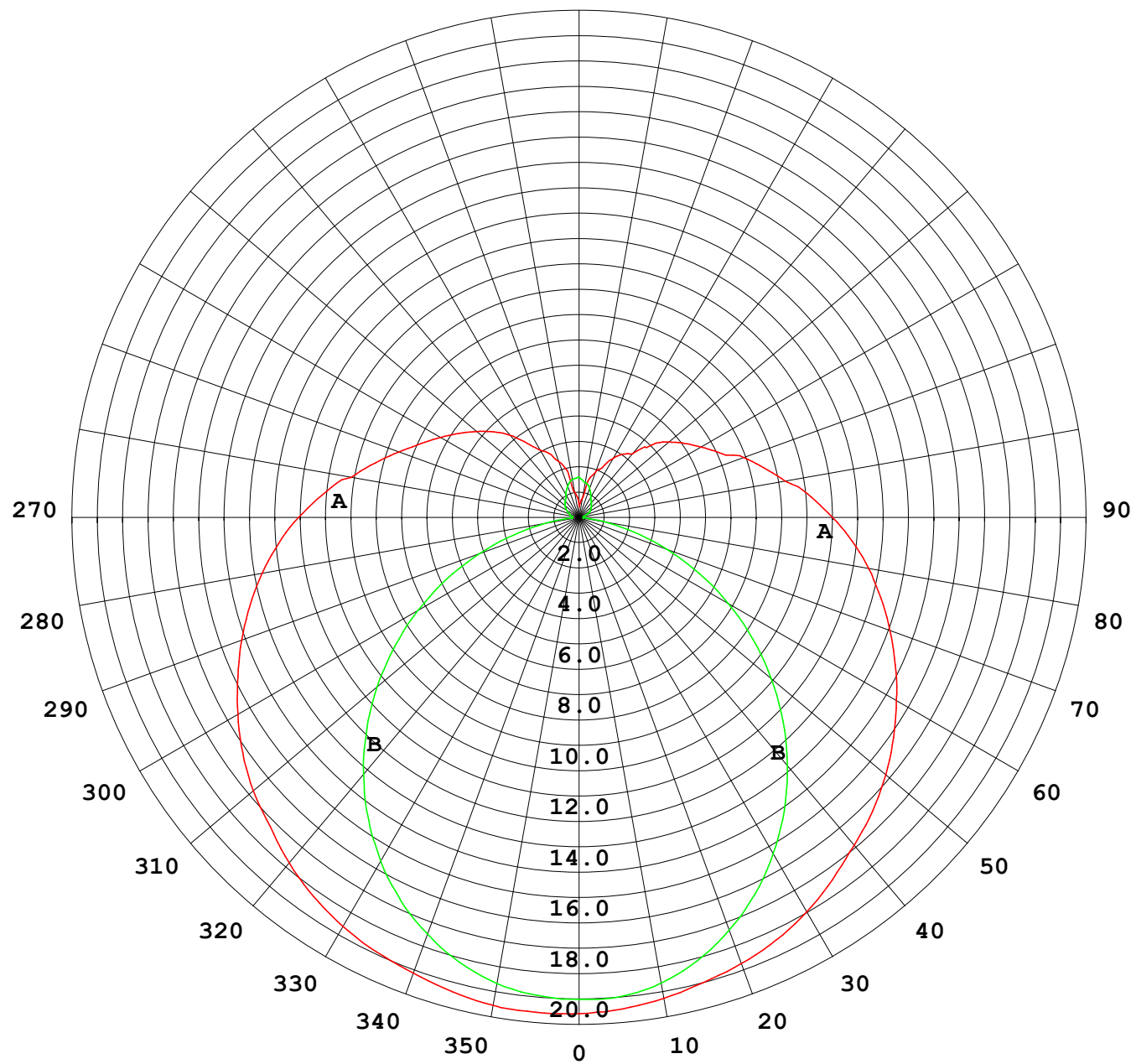
Photometric Data Table [cd]

33.0	16.38	18.42
36.0	15.90	18.13
39.0	15.41	17.85
42.0	14.88	17.57
45.0	14.31	17.28
48.0	13.69	16.97
51.0	13.06	16.63
54.0	12.42	16.26
57.0	11.80	15.84
60.0	11.16	15.42
63.0	10.52	14.98
66.0	9.873	14.59
69.0	9.225	14.20
72.0	8.582	13.78
75.0	7.969	13.32
78.0	7.416	12.88
81.0	6.883	12.42
84.0	6.381	11.99
87.0	5.929	11.58
90.0	5.547	11.13
93.0	5.226	10.71
96.0	4.954	10.30
99.0	4.698	9.319
102.0	4.461	8.821
105.0	3.975	8.514
108.0	3.884	8.158
111.0	3.719	7.766
114.0	3.690	7.399
117.0	3.427	7.052
120.0	3.271	6.730
123.0	3.135	6.414
126.0	2.864	6.127
129.0	2.824	5.821
132.0	2.699	5.338
135.0	2.562	4.712
138.0	2.366	4.197
141.0	2.195	3.891
144.0	2.040	3.249
147.0	1.914	3.076
150.0	1.794	2.886
153.0	1.764	2.619
156.0	1.810	2.338
159.0	1.820	2.121
162.0	1.830	1.845
165.0	1.841	1.694
168.0	1.829	1.684
171.0	1.739	1.709
174.0	1.691	1.697
177.0	1.643	1.639
180.0	1.568	1.447

C Range: 0 - 360DEG
 C Interval: 30.0DEG
 Test Speed: HIGH
 Temperature: 25.3DEG
 Operators: LPC
 Test Date: 2021-12-15

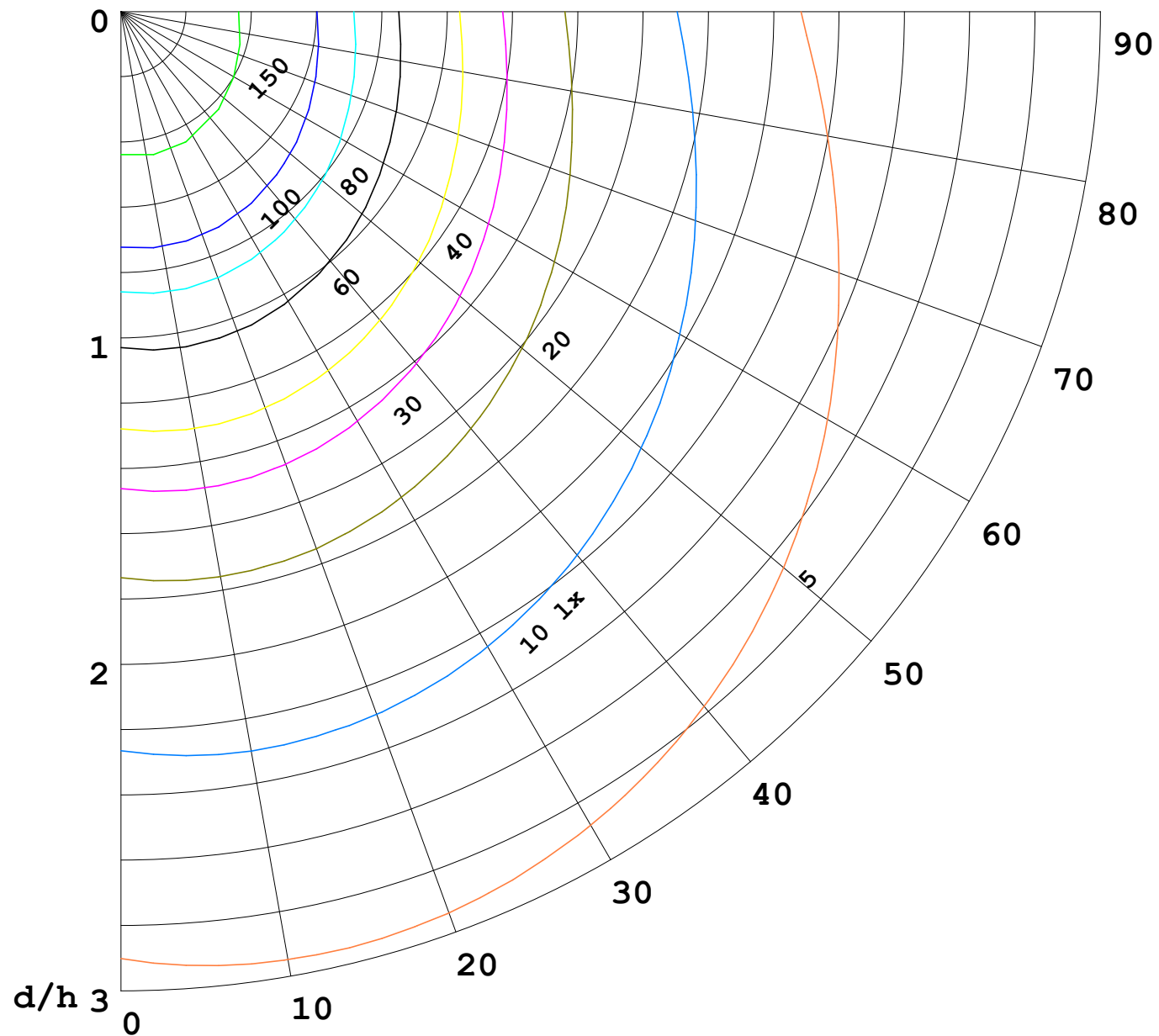
γ Range: 0 - 180DEG
 γ Interval: 1.0DEG
 Test System: EVERFINE GO-2000B_V1 SYSTEM V2.0.362
 Humidity: 65.0%
 Test Distance: 9.200m [K=1.0000]
 Remarks:

I (cd)



1000 lm

$\kappa = 1$



F = 5000 lm
 K = 0.7
 Hcc = 0.0 m
 Hfc = 0.0 m
 Eave = 100 lx

	Pcc	Pw	Pfc
—	70	50	30
—	50	30	20

