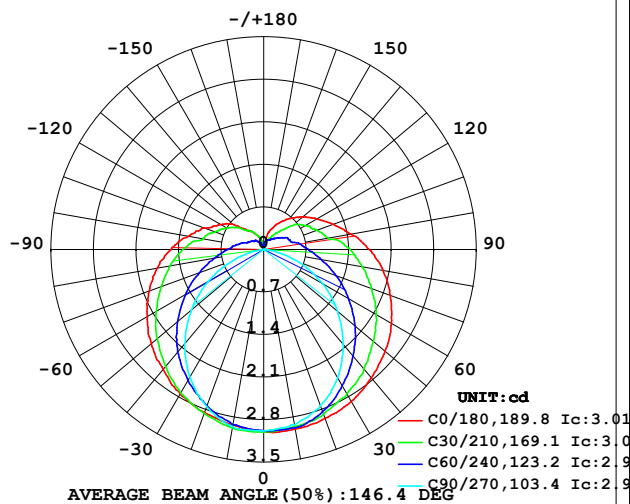


## LUMINAIRE PHOTOMETRIC TEST REPORT

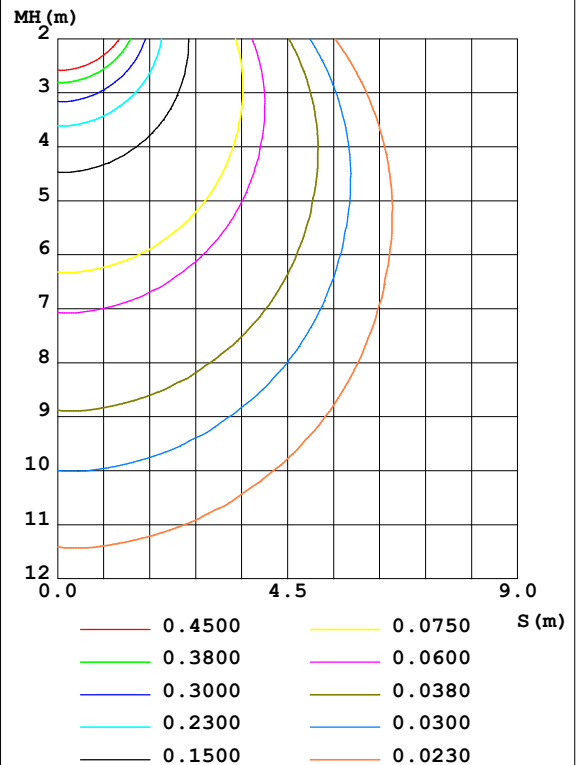
Test:U:24.00V I:0.3178A P:7.627W PF:1.000 Freq:50.00Hz Lamp Flux:14.7348x1 lm		
NAME: SF21-24V-5050-70-DMX3-RGB-B	TYPE: 硅胶	WEIGHT:
SPEC.:	DIM.: 28mm*11.5mm	SERIAL No.:2021121513
MFR.: OLYMPIA	SUR.:1*0.016	Shielding Angle:

DATA OF LAMP		PHOTOMETRIC DATA				Eff: 1.93 lm/W
MODEL	5050	I <sub>max</sub> (cd)	3.015	S/MH (C0/180)	1.38	
NOMINAL POWER (W)	5	LOR (%)	100.0	S/MH (C90/270)	1.22	
RATED VOLTAGE (V)	24	TOTAL FLUX (lm)	14.735	η UP, DN (C0-180)	11.1, 39.6	
NOMINAL FLUX (lm)	14.7348	CIE CLASS	SEMI-D.	η UP, DN (C180-360)	10.5, 38.8	
LAMPS INSIDE	1	η up (%)	21.6	CIBSE SHR NOM	1.50	
TEST VOLTAGE (V)	24	η down (%)	78.4	CIBSE SHR MAX	1.55	

LUMINOUS INTENSITY DISTRIBUTION DIAGRAM



C0 PLANE ISOLUX DIAGRAM (UNIT: lx)



C Range: 0 - 360DEG  
 C Interval: 30.0DEG  
 Test Speed: HIGH  
 Temperature: 25.3DEG  
 Operators: LPC  
 Test Date: 2021-12-15

γ Range: 0 - 180DEG  
 γ Interval: 1.0DEG  
 Test System: EVERFINE GO-2000B\_V1 SYSTEM V2.0.362  
 Humidity: 65.0%  
 Test Distance: 9.200m [K=1.0000]  
 Remarks:

## ZONAL FLUX DIAGRAM

## ZONAL FLUX DIAGRAM:

$\gamma$	C0	C45	C90	C135	C180	C225	C270	C315	$\gamma$	$\Phi$ zone	$\Phi$ total	%lum, lamp
10	3.003	2.969	2.930	2.950	2.932	2.955	2.960	2.973	0- 10	0.2840	0.2840	1.93,1.93
20	2.955	2.860	2.739	2.812	2.855	2.802	2.754	2.842	10- 20	0.8204	1.104	7.5,7.5
30	2.885	2.666	2.437	2.633	2.749	2.608	2.428	2.648	20- 30	1.263	2.368	16.1,16.1
40	2.759	2.428	2.035	2.365	2.578	2.362	2.021	2.422	30- 40	1.573	3.941	26.7,26.7
50	2.609	2.161	1.588	2.076	2.412	2.068	1.558	2.158	40- 50	1.729	5.670	38.5,38.5
60	2.428	1.872	1.115	1.769	2.211	1.764	1.051	1.877	50- 60	1.736	7.406	50.3,50.3
70	2.222	1.576	0.6127	1.473	2.005	1.462	0.5431	1.588	60- 70	1.609	9.015	61.2,61.2
80	1.995	1.304	0.1455	1.201	1.779	1.194	0.1008	1.309	70- 80	1.389	10.40	70.6,70.6
90	1.734	1.080	0.0050	0.9675	1.523	0.9625	0	1.081	80- 90	1.150	11.55	78.4,78.4
100	1.463	0.8368	0.0050	0.7413	1.261	0.7412	0	0.8369	90-100	0.9413	12.49	84.8,84.8
110	1.216	0.6960	0.0050	0.5640	1.045	0.5905	0	0.7119	100-110	0.7202	13.21	89.7,89.7
120	1.005	0.5881	0.0050	0.4750	0.8240	0.4855	0	0.5830	110-120	0.5568	13.77	93.5,93.5
130	0.8295	0.4548	0.0050	0.3894	0.6328	0.3875	0	0.4600	120-130	0.4139	14.19	96.3,96.3
140	0.6685	0.3015	0.0050	0.2980	0.3969	0.3015	0	0.2916	130-140	0.2661	14.45	98.1,98.1
150	0.5027	0.2085	0.0101	0.2362	0.3161	0.2270	0	0.2160	140-150	0.1594	14.61	99.2,99.2
160	0.3519	0.1467	0.0101	0.1632	0.2091	0.1488	0	0.1505	150-160	0.0850	14.70	99.7,99.7
170	0.1057	0.1055	0.0050	0.0654	0.0352	0.0703	0	0.1080	160-170	0.0335	14.73	100,100
180	0.0201	0.0101	0.0050	0.0075	0.0151	0.0126	0	0.0101	170-180	0.0052	14.73	100,100
DEG	LUMINOUS INTENSITY:cd									UNIT:lm		

Conical surface Flux(90deg): 4.7955 lm

%lum = 32.5%

%lamp = 32.5%

Conical surface Flux(120deg): 7.4058 lm

%lum = 50.3%

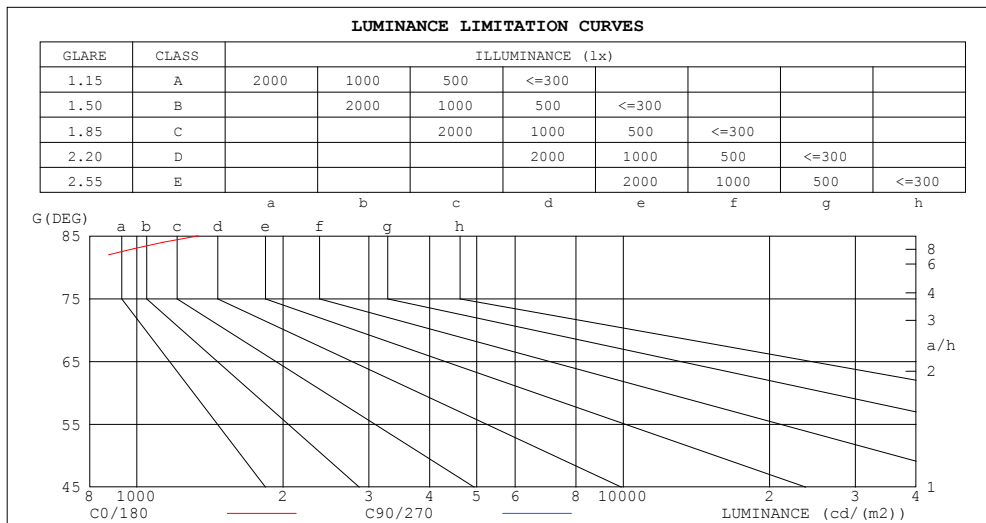
%lamp = 50.3%

C Range: 0 - 360DEG  
 C Interval: 30.0DEG  
 Test Speed: HIGH  
 Temperature:25.3DEG  
 Operators:LPC  
 Test Date:2021-12-15

$\gamma$  Range: 0 - 180DEG  
 $\gamma$  Interval: 1.0DEG  
 Test System:EVERFINE GO-2000B\_V1 SYSTEM V2.0.362  
 Humidity:65.0%  
 Test Distance:9.200m [K=1.0000]  
 Remarks:

## LUMINANCE LIMITATION CURVES

Test:U:24.00V I:0.3178A P:7.627W PF:1.000 Freq:50.00Hz Lamp Flux:14.7348x1 lm		
NAME: SF21-24V-5050-70-DMX3-RGB-B	TYPE: 硅胶	WEIGHT:
SPEC.:	DIM.: 28mm*11.5mm	SERIAL No.:2021121513
MFR.: OLYMPIA	SUR.:1*0.016	Shielding Angle:



LUMINANCE cd/(m2)		
G (DEG)	C0/180	C90/270
85	1337	4
80	718	52
75	510	90
70	406	112
65	343	126
60	303	139
55	275	148
50	254	154
45	236	160

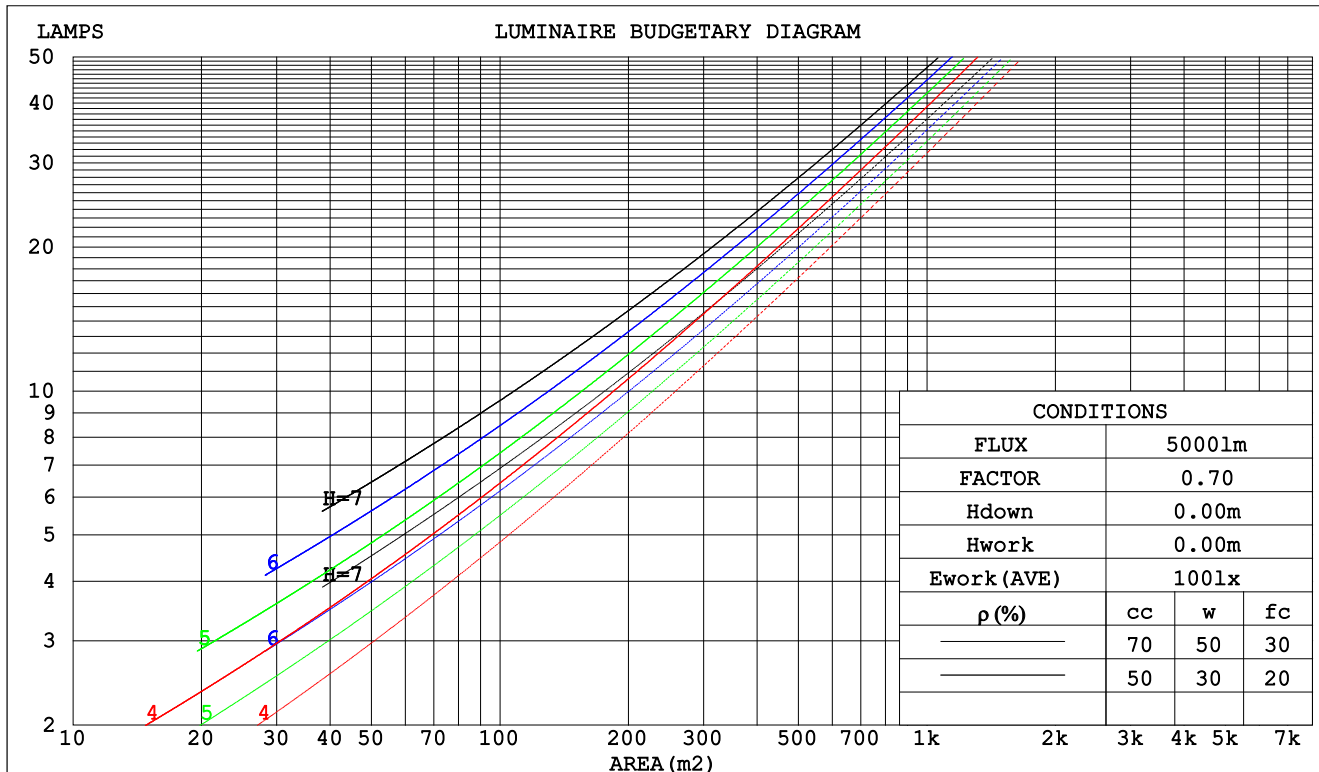
C Range: 0 - 360DEG  
C Interval: 30.0DEG  
Test Speed: HIGH  
Temperature:25.3DEG  
Operators:LPC  
Test Date:2021-12-15

γ Range: 0 - 180DEG  
γ Interval: 1.0DEG  
Test System:EVERFINE GO-2000B\_V1 SYSTEM V2.0.362  
Humidity:65.0%  
Test Distance:9.200m [K=1.0000]  
Remarks:

## CU AND LUMINAIRE BUDGETARY ESTIMATE DIAGRAM

Test:U:24.00V I:0.3178A P:7.627W PF:1.000 Freq:50.00Hz Lamp Flux:14.7348x1 lm		
NAME: SF21-24V-5050-70-DMX3-RGB-B	TYPE: 硅胶	WEIGHT:
SPEC.:	DIM.: 28mm*11.5mm	SERIAL No.:2021121513
MFR.: OLYMPIA	SUR.:1*0.016	Shielding Angle:

pcc	80%			70%			50%			30%			10%			0
pw	50%	30%	10%	50%	30%	10%	50%	30%	10%	50%	30%	10%	50%	30%	10%	0
pfc	20%			20%			20%			20%			20%			0
RCR	RCR:Room Cavity Ratio						Coefficients of Utilization(CU)									
0.0	1.14	1.14	1.14	1.09	1.09	1.09	.99	.99	.99	.90	.90	.90	.82	.82	.82	.78
1.0	.95	.89	.84	.90	.85	.81	.82	.78	.74	.74	.71	.68	.67	.65	.63	.59
2.0	.81	.73	.66	.77	.70	.64	.70	.64	.59	.63	.59	.54	.57	.53	.50	.47
3.0	.70	.61	.54	.67	.59	.52	.61	.54	.48	.55	.49	.45	.50	.45	.41	.38
4.0	.61	.52	.45	.59	.50	.43	.53	.46	.40	.48	.42	.38	.44	.39	.35	.32
5.0	.55	.45	.38	.52	.43	.37	.47	.40	.34	.43	.37	.32	.39	.34	.30	.27
6.0	.49	.39	.33	.47	.38	.32	.43	.35	.30	.39	.33	.28	.35	.30	.26	.23
7.0	.44	.35	.29	.42	.34	.28	.39	.31	.26	.35	.29	.24	.32	.27	.23	.20
8.0	.40	.31	.25	.38	.30	.25	.35	.28	.23	.32	.26	.22	.30	.24	.20	.18
9.0	.37	.28	.22	.35	.27	.22	.32	.25	.21	.30	.24	.19	.27	.22	.18	.16
10.0	.34	.26	.20	.32	.25	.20	.30	.23	.19	.27	.22	.18	.25	.20	.16	.15



C Range: 0 - 360DEG  
 C Interval: 30.0DEG  
 Test Speed: HIGH  
 Temperature:25.3DEG  
 Operators:LPC  
 Test Date:2021-12-15

γ Range: 0 - 180DEG  
 γ Interval: 1.0DEG  
 Test System:EVERFINE GO-2000B\_V1 SYSTEM V2.0.362  
 Humidity:65.0%  
 Test Distance:9.200m [K=1.0000]  
 Remarks:

## WEC AND CCEC

Test:U:24.00V I:0.3178A P:7.627W PF:1.000 Freq:50.00Hz Lamp Flux:14.7348x1 lm		
NAME: SF21-24V-5050-70-DMX3-RGB-B	TYPE: 硅胶	WEIGHT:
SPEC.:	DIM.: 28mm*11.5mm	SERIAL No.:2021121513
MFR.: OLYMPIA	SUR.:1*0.016	Shielding Angle:

pcc	80%			70%			50%			30%			10%			0	
pw	50%	30%	10%	50%	30%	10%	50%	30%	10%	50%	30%	10%	50%	30%	10%	0	
pfc	20%			20%			20%			20%			20%			0	
RCR	RCR:Room Cavity Ratio						Wall Exitance Coefficients(WEC)										
0.0																	
1.0	.388	.221	.070	.374	.214	.068	.349	.200	.064	.325	.187	.060	.303	.176	.057		
2.0	.334	.183	.056	.322	.177	.055	.298	.166	.052	.277	.155	.049	.257	.145	.046		
3.0	.296	.158	.047	.285	.153	.046	.264	.143	.043	.244	.134	.041	.226	.125	.039		
4.0	.266	.138	.041	.256	.134	.040	.237	.125	.037	.219	.117	.035	.202	.110	.033		
5.0	.242	.123	.036	.232	.119	.035	.215	.112	.033	.198	.105	.031	.183	.098	.029		
6.0	.221	.111	.032	.213	.108	.031	.197	.101	.029	.182	.094	.028	.168	.088	.026		
7.0	.204	.101	.029	.196	.098	.028	.182	.092	.026	.168	.086	.025	.155	.080	.024		
8.0	.189	.092	.026	.182	.090	.025	.168	.084	.024	.156	.079	.023	.144	.074	.022		
9.0	.176	.085	.024	.170	.083	.023	.157	.078	.022	.145	.073	.021	.134	.068	.020		
10.0	.165	.079	.022	.159	.077	.021	.147	.072	.020	.136	.068	.019	.126	.063	.018		

pcc	80%			70%			50%			30%			10%			0
pw	50%	30%	10%	50%	30%	10%	50%	30%	10%	50%	30%	10%	50%	30%	10%	0
pfc	20%			20%			20%			20%			20%			0
RCR	RCR:Room Cavity Ratio						Ceiling Cavity Exitance Coefficients(CCEC)									
0.0	.355	.355	.355	.303	.303	.303	.207	.207	.207	.119	.119	.119	.038	.038	.038	
1.0	.352	.321	.294	.301	.276	.253	.206	.190	.175	.118	.110	.102	.038	.035	.033	
2.0	.345	.299	.260	.295	.257	.225	.202	.178	.157	.117	.103	.092	.037	.033	.030	
3.0	.337	.282	.238	.289	.244	.207	.199	.169	.145	.115	.099	.085	.037	.032	.028	
4.0	.330	.270	.224	.283	.233	.195	.195	.163	.137	.113	.095	.081	.036	.031	.027	
5.0	.322	.260	.215	.277	.225	.187	.190	.157	.132	.110	.092	.078	.036	.030	.026	
6.0	.315	.252	.208	.270	.219	.181	.187	.153	.128	.108	.090	.076	.035	.029	.025	
7.0	.307	.246	.203	.265	.213	.177	.183	.149	.125	.106	.088	.074	.034	.029	.025	
8.0	.301	.240	.199	.259	.208	.173	.179	.146	.123	.104	.086	.073	.034	.028	.024	
9.0	.295	.236	.196	.254	.204	.171	.176	.144	.121	.102	.085	.072	.033	.028	.024	
10.0	.289	.231	.193	.249	.201	.169	.173	.141	.120	.101	.084	.072	.033	.027	.024	

C Range: 0 - 360DEG  
 C Interval: 30.0DEG  
 Test Speed: HIGH  
 Temperature:25.3DEG  
 Operators:LPC  
 Test Date:2021-12-15

γ Range: 0 - 180DEG  
 γ Interval: 1.0DEG  
 Test System:EVERFINE GO-2000B\_V1 SYSTEM V2.0.362  
 Humidity:65.0%  
 Test Distance:9.200m [K=1.0000]  
 Remarks:

### UGR(Unified Glare Rating) Table

Test:U:24.00V I:0.3178A P:7.627W PF:1.000 Freq:50.00Hz Lamp Flux:14.7348x1 lm										
NAME: SF21-24V-5050-70-DMX3-RGB-B					TYPE: 硅胶			WEIGHT:		
SPEC.:					DIM.: 28mm*11.5mm			SERIAL No.:2021121513		
MFR.: OLYMPIA					SUR.:1*0.016			Shielding Angle:		
ceiling/cavity	0.7	0.7	0.5	0.5	0.3	0.7	0.7	0.5	0.5	0.3
walls	0.5	0.3	0.5	0.3	0.3	0.5	0.3	0.5	0.3	0.3
working plane	0.2	0.2	0.2	0.2	0.2	0.2	0.2	0.2	0.2	0.2
Room dimensions	Viewed crosswise					Viewed endwise				
x = 2H y = 2H	22.2	23.6	22.8	24.1	24.8	19.5	20.8	20.0	21.3	22.0
3H	25.1	26.3	25.7	26.9	27.6	20.9	22.1	21.4	22.7	23.3
4H	26.7	27.9	27.3	28.5	29.2	21.4	22.5	22.0	23.1	23.8
6H	28.5	29.6	29.1	30.3	31.0	21.6	22.7	22.3	23.4	24.1
8H	29.5	30.6	30.2	31.2	32.0	21.7	22.7	22.3	23.4	24.1
12H	30.7	31.7	31.3	32.3	33.1	21.6	22.7	22.3	23.3	24.0
4H 2H	22.8	23.9	23.4	24.5	25.2	20.8	22.0	21.4	22.6	23.3
3H	25.9	26.9	26.5	27.6	28.3	22.5	23.6	23.2	24.2	25.0
4H	27.7	28.6	28.4	29.3	30.1	23.3	24.3	24.0	24.9	25.7
6H	29.7	30.5	30.4	31.2	32.0	23.9	24.7	24.6	25.4	26.2
8H	30.8	31.6	31.5	32.3	33.2	24.0	24.8	24.7	25.5	26.3
12H	32.1	32.8	32.8	33.6	34.4	24.1	24.8	24.8	25.5	26.4
8H 4H	28.0	28.8	28.7	29.5	30.3	24.6	25.4	25.3	26.1	27.0
6H	30.3	31.0	31.1	31.7	32.6	25.7	26.3	26.4	27.1	27.9
8H	31.7	32.3	32.4	33.0	33.9	26.1	26.7	26.9	27.5	28.3
12H	33.2	33.7	34.0	34.5	35.4	26.4	27.0	27.2	27.7	28.6
12H 4H	28.0	28.8	28.7	29.5	30.3	25.1	25.8	25.8	26.5	27.4
6H	30.4	31.0	31.2	31.8	32.7	26.4	27.0	27.2	27.8	28.6
8H	31.9	32.4	32.7	33.2	34.1	27.1	27.6	27.8	28.4	29.3
Variations with the observer position at spacings:										
S = 1.0H	+ 0.1 / - 0.1					+ 0.1 / - 0.1				
1.5H	+ 0.2 / - 0.3					+ 0.2 / - 0.3				
2.0H	+ 0.2 / - 0.3					+ 0.3 / - 0.4				

CIE Pub.117, 14.73 lm Total Lamp Luminous Flux Correct (8log(F/F0) = -14.7)

C Range: 0 - 360DEG  
C Interval: 30.0DEG  
Test Speed: HIGH  
Temperature:25.3DEG  
Operators:LPC  
Test Date:2021-12-15

γ Range: 0 - 180DEG  
γ Interval: 1.0DEG  
Test System:EVERFINE GO-2000B\_V1 SYSTEM V2.0.362  
Humidity:65.0%  
Test Distance:9.200m [K=1.0000]  
Remarks:

## UTILIZATION FACTORS TABLE

Test:U:24.00V I:0.3178A P:7.627W PF:1.000 Freq:50.00Hz Lamp Flux:14.7348x1 lm		
NAME: SF21-24V-5050-70-DMX3-RGB-B	TYPE: 硅胶	WEIGHT:
SPEC.:	DIM.: 28mm*11.5mm	SERIAL No.:2021121513
MFR.: OLYMPIA	SUR.:1*0.016	Shielding Angle:

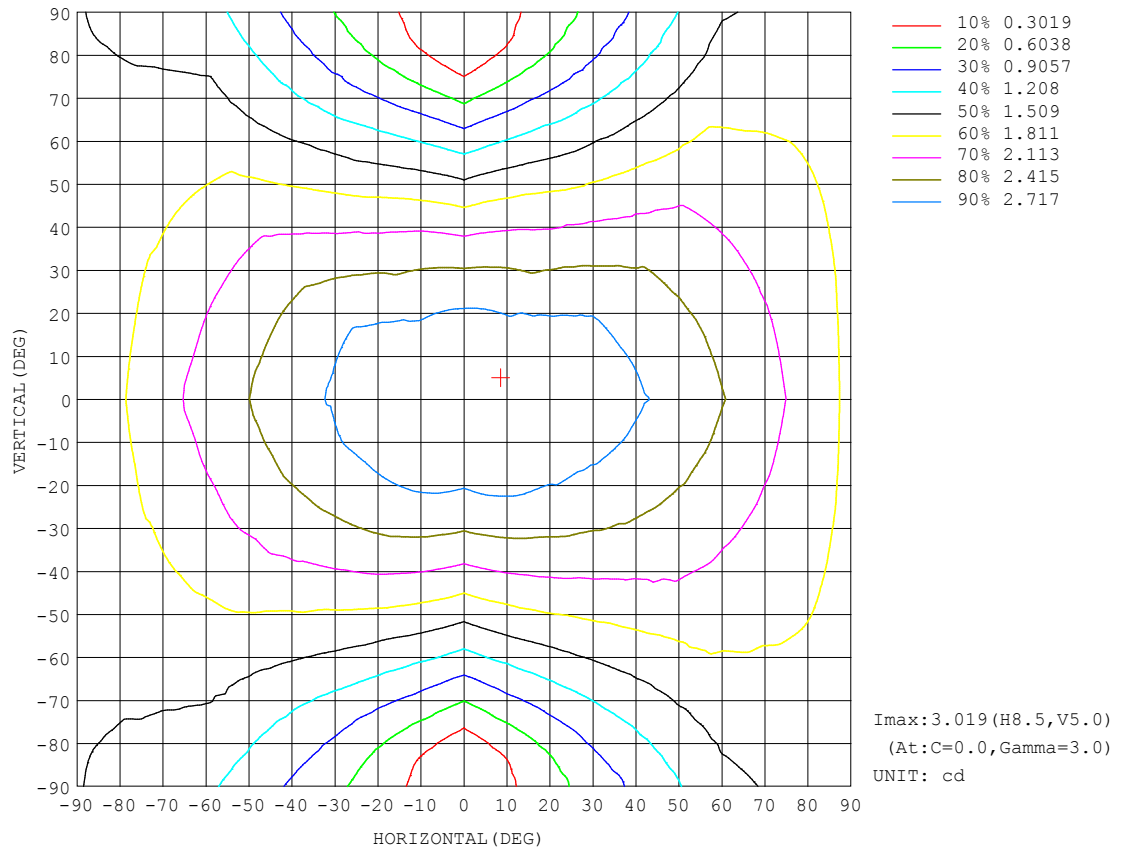
REFLECTANCE										
Ceiling	0.8	0.8	0.8	0.7	0.7	0.7	0.5	0.5	0.5	0
Walls	0.7	0.5	0.3	0.7	0.5	0.3	0.7	0.5	0.3	0
Working plane	0.2	0.2	0.2	0.2	0.2	0.2	0.2	0.2	0.2	0
ROOM INDEX	UTILIZATION FACTORS (PERCENT) $k(RI) \times RCR = 5$									
$k = 0.60$	47	34	27	45	34	27	43	33	26	19
0.80	56	43	34	54	42	34	51	40	33	25
1.00	63	50	42	61	49	41	57	49	40	31
1.25	70	57	49	68	56	48	63	53	46	36
1.50	75	63	54	72	61	53	67	58	51	40
2.00	83	71	63	79	69	61	73	65	58	46
2.50	87	77	68	83	74	67	77	69	63	49
3.00	91	81	74	87	78	71	80	73	67	53
4.00	96	87	81	91	84	78	84	78	73	57
5.00	99	92	85	94	88	82	86	81	77	60
ROOM INDEX	UF (total)									Direct
According to DIN EN 13032-2 2004			Suspended					SHRNOM = 1.25		

C Range: 0 - 360DEG  
C Interval: 30.0DEG  
Test Speed: HIGH  
Temperature:25.3DEG  
Operators:LPC  
Test Date:2021-12-15

$\gamma$  Range: 0 - 180DEG  
 $\gamma$  Interval: 1.0DEG  
Test System:EVERFINE GO-2000B\_V1 SYSTEM V2.0.362  
Humidity:65.0%  
Test Distance:9.200m [K=1.0000]  
Remarks:

## ISOCANDELA DIAGRAM

Test:U:24.00V I:0.3178A P:7.627W PF:1.000 Freq:50.00Hz Lamp Flux:14.7348x1 lm		
NAME: SF21-24V-5050-70-DMX3-RGB-B	TYPE: 硅胶	WEIGHT:
SPEC.:	DIM.: 28mm*11.5mm	SERIAL No.:2021121513
MFR.: OLYMPIA	SUR.:1*0.016	Shielding Angle:

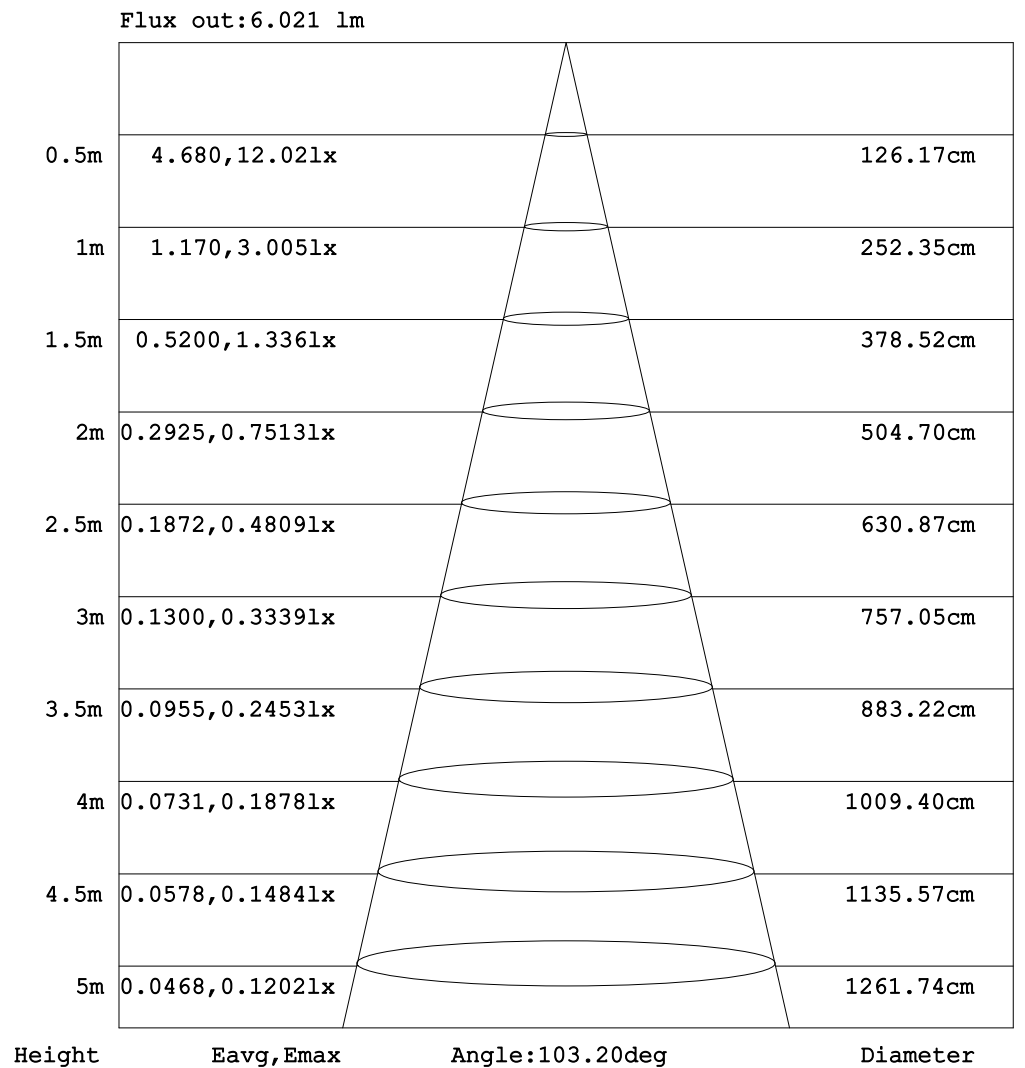


C Range: 0 - 360DEG  
C Interval: 30.0DEG  
Test Speed: HIGH  
Temperature: 25.3DEG  
Operators: LPC  
Test Date: 2021-12-15

$\gamma$  Range: 0 - 180DEG  
 $\gamma$  Interval: 1.0DEG  
Test System: EVERFINE GO-2000B\_V1 SYSTEM V2.0.362  
Humidity: 65.0%  
Test Distance: 9.200m [K=1.0000]  
Remarks:

## AAI Figure

Test:U:24.00V I:0.3178A P:7.627W PF:1.000 Freq:50.00Hz Lamp Flux:14.7348x1 lm		
NAME: SF21-24V-5050-70-DMX3-RGB-B	TYPE: 硅胶	WEIGHT:
SPEC.:	DIM.: 28mm*11.5mm	SERIAL No.:2021121513
MFR.: OLYMPIA	SUR.:1*0.016	Shielding Angle:



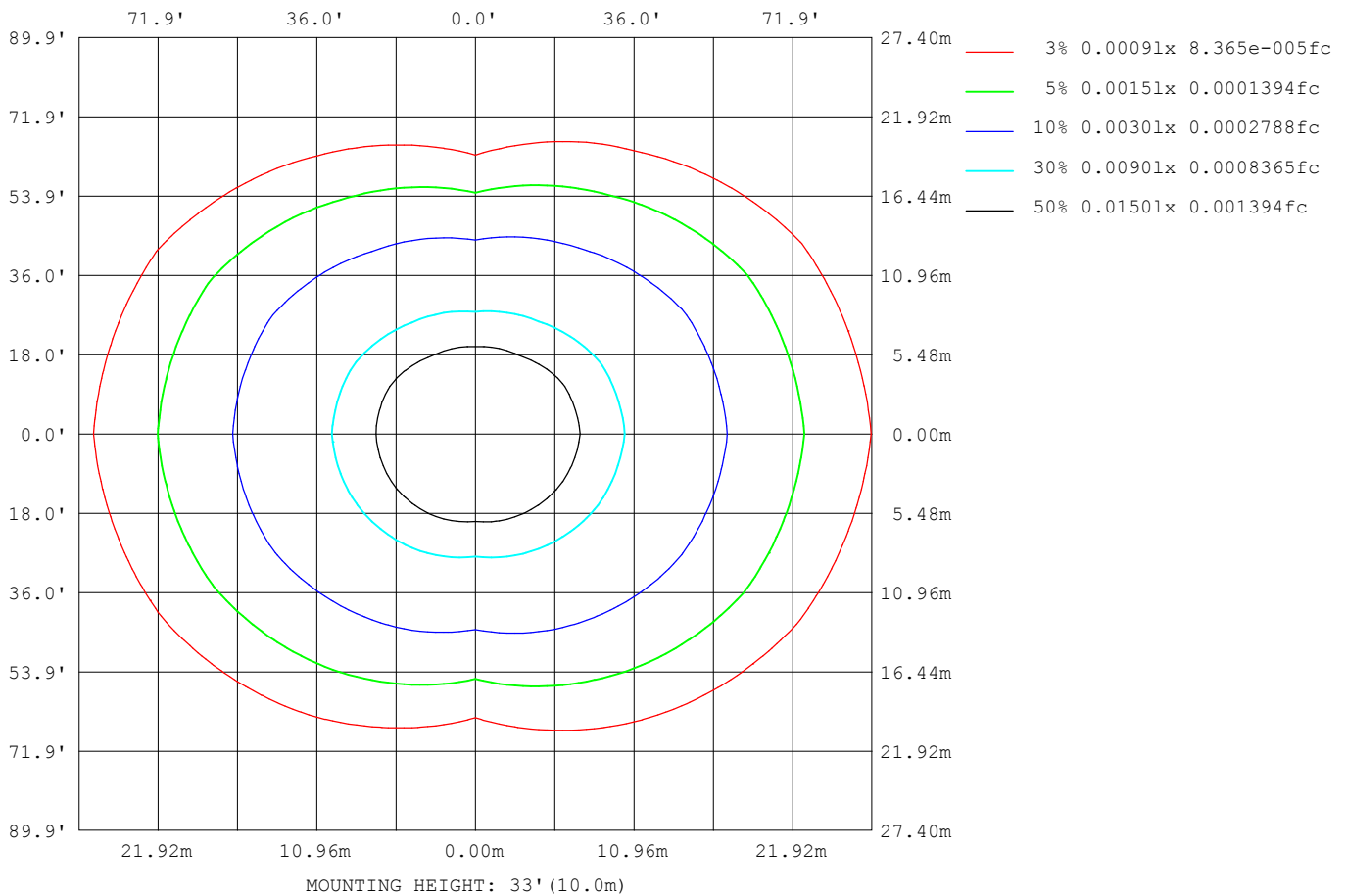
Note: The Curves indicate the illuminated area and the average illumination when the luminaire is at different distance.

C Range: 0 - 360DEG  
 C Interval: 30.0DEG  
 Test Speed: HIGH  
 Temperature: 25.3DEG  
 Operators: LPC  
 Test Date: 2021-12-15

$\gamma$  Range: 0 - 180DEG  
 $\gamma$  Interval: 1.0DEG  
 Test System: EVERFINE GO-2000B\_V1 SYSTEM V2.0.362  
 Humidity: 65.0%  
 Test Distance: 9.200m [K=1.0000]  
 Remarks:

## ISOLUX DIAGRAM

Test:U:24.00V I:0.3178A P:7.627W PF:1.000 Freq:50.00Hz Lamp Flux:14.7348x1 lm		
NAME: SF21-24V-5050-70-DMX3-RGB-B	TYPE: 硅胶	WEIGHT:
SPEC.:	DIM.: 28mm*11.5mm	SERIAL No.:2021121513
MFR.: OLYMPIA	SUR.:1*0.016	Shielding Angle:



C Range: 0 - 360DEG  
C Interval: 30.0DEG  
Test Speed: HIGH  
Temperature: 25.3DEG  
Operators: LPC  
Test Date: 2021-12-15

$\gamma$  Range: 0 - 180DEG  
 $\gamma$  Interval: 1.0DEG  
Test System: EVERFINE GO-2000B\_V1 SYSTEM V2.0.362  
Humidity: 65.0%  
Test Distance: 9.200m [K=1.0000]  
Remarks:

## LED Avg.L Report

Test:U:24.00V I:0.3178A P:7.627W PF:1.000 Freq:50.00Hz Lamp Flux:14.7348x1 lm		
NAME: SF21-24V-5050-70-DMX3-RGB-B	TYPE:硅胶	WEIGHT:
SPEC.:	DIM.: 28mm*11.5mm	SERIAL No.:2021121513
MFR.: OLYMPIA	SUR.:1*0.016	Shielding Angle:

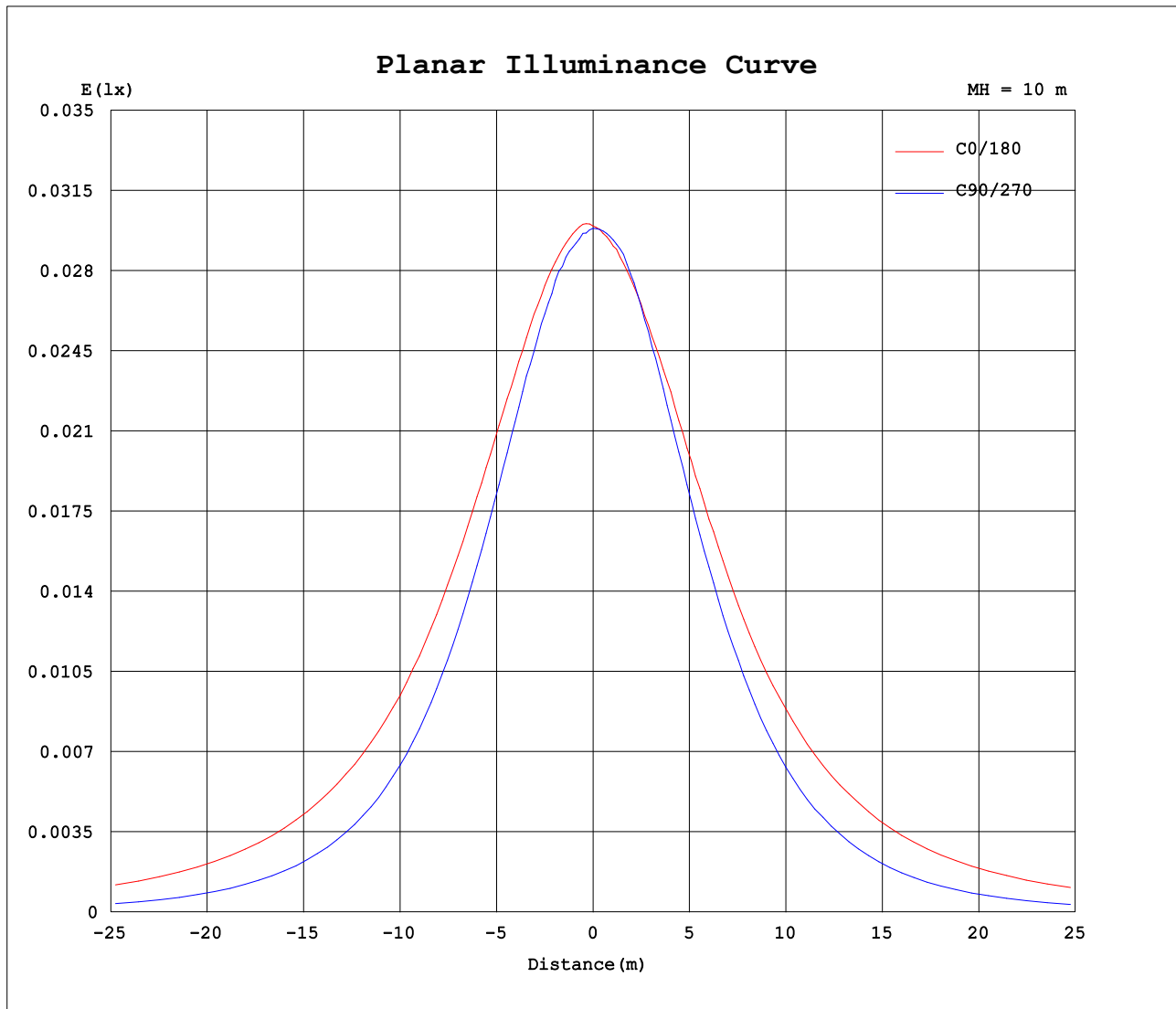
AvgL	cd/m2
L_0~180 (65) av	329
L_0~180 (75) av	483
L_0~180 (85) av	1260
L_90~270 (65) av	122
L_90~270 (75) av	81
L_90~270 (85) av	2
L_45 (65) av	251
L_45 (75) av	340
L_45 (85) av	834

Standard: GB/T 29293-2012

C Range: 0 - 360DEG  
C Interval: 30.0DEG  
Test Speed: HIGH  
Temperature:25.3DEG  
Operators:LPC  
Test Date:2021-12-15

γ Range: 0 - 180DEG  
γ Interval: 1.0DEG  
Test System:EVERFINE GO-2000B\_V1 SYSTEM V2.0.362  
Humidity:65.0%  
Test Distance:9.200m [K=1.0000]  
Remarks:

## Planar Illuminance Curve



C Range: 0 - 360DEG  
C Interval: 30.0DEG  
Test Speed: HIGH  
Temperature: 25.3DEG  
Operators: LPC  
Test Date: 2021-12-15

$\gamma$  Range: 0 - 180DEG  
 $\gamma$  Interval: 1.0DEG  
Test System: EVERFINE GO-2000B\_V1 SYSTEM V2.0.362  
Humidity: 65.0%  
Test Distance: 9.200m [K=1.0000]  
Remarks:

## LUMINOUS DISTRIBUTION INTENSITY DATA

Test:U:24.00V I:0.3178A P:7.627W PF:1.000 Freq:50.00Hz Lamp Flux:14.7348x1 lm		
NAME: SF21-24V-5050-70-DMX3-RGB-B	TYPE: 硅胶	WEIGHT:
SPEC.:	DIM.: 28mm*11.5mm	SERIAL No.:2021121513
MFR.: OLYMPIA	SUR.:1*0.016	Shielding Angle:

Table--1

UNIT: cd

C (DEG) γ (DEG)	0	30	60	90	120	150	180	210	240	270	300	330						
0	3.00	3.01	2.98	2.99	2.99	2.99	3.00	3.01	2.98	2.99	2.99	2.99						
5	3.01	2.98	2.98	2.96	3.01	2.96	2.97	3.00	2.96	2.98	2.98	3.01						
10	3.00	2.96	2.98	2.93	2.98	2.92	2.93	2.98	2.93	2.96	2.93	3.01						
15	2.99	2.93	2.93	2.85	2.91	2.87	2.89	2.93	2.85	2.87	2.86	2.98						
20	2.96	2.88	2.83	2.74	2.81	2.81	2.85	2.87	2.73	2.75	2.77	2.92						
25	2.93	2.81	2.73	2.60	2.70	2.76	2.81	2.80	2.62	2.61	2.63	2.85						
30	2.88	2.74	2.59	2.44	2.57	2.69	2.75	2.73	2.49	2.43	2.50	2.79						
35	2.83	2.66	2.45	2.25	2.43	2.57	2.67	2.62	2.36	2.23	2.36	2.72						
40	2.76	2.56	2.29	2.04	2.27	2.46	2.58	2.51	2.21	2.02	2.22	2.63						
45	2.67	2.45	2.13	1.81	2.11	2.36	2.51	2.40	2.04	1.79	2.07	2.52						
50	2.61	2.36	1.97	1.59	1.92	2.24	2.41	2.29	1.85	1.56	1.90	2.42						
55	2.53	2.25	1.78	1.36	1.73	2.12	2.32	2.18	1.66	1.31	1.72	2.31						
60	2.43	2.14	1.61	1.12	1.56	1.98	2.21	2.04	1.49	1.05	1.55	2.20						
65	2.32	2.03	1.44	0.85	1.38	1.86	2.13	1.92	1.32	0.80	1.40	2.08						
70	2.22	1.88	1.27	0.61	1.21	1.74	2.01	1.79	1.13	0.54	1.23	1.95						
75	2.11	1.76	1.12	0.37	1.04	1.61	1.89	1.67	0.96	0.30	1.06	1.83						
80	2.00	1.65	0.96	0.15	0.89	1.51	1.78	1.56	0.82	0.10	0.90	1.71						
85	1.86	1.52	0.84	0.01	0.77	1.40	1.65	1.45	0.69	0.00	0.77	1.59						
90	1.73	1.42	0.74	0.01	0.67	1.27	1.52	1.33	0.60	0.00	0.68	1.48						
95	1.61	1.30	0.66	0.01	0.59	1.17	1.41	1.21	0.52	0.00	0.61	1.37						
100	1.46	1.09	0.59	0.01	0.53	0.95	1.26	1.02	0.46	0.00	0.53	1.15						
105	1.34	1.01	0.48	0.01	0.38	0.89	1.16	0.96	0.39	0.00	0.45	1.08						
110	1.22	0.93	0.46	0.01	0.36	0.77	1.04	0.85	0.33	0.00	0.44	0.99						
115	1.11	0.85	0.44	0.01	0.34	0.70	0.92	0.78	0.28	0.00	0.37	0.91						
120	1.01	0.79	0.39	0.01	0.30	0.65	0.82	0.71	0.26	0.00	0.32	0.85						
125	0.92	0.72	0.34	0.01	0.28	0.60	0.75	0.64	0.24	0.00	0.29	0.78						
130	0.83	0.61	0.30	0.01	0.27	0.51	0.63	0.56	0.21	0.00	0.24	0.68						
135	0.75	0.47	0.26	0.01	0.25	0.40	0.48	0.45	0.21	0.00	0.21	0.55						
140	0.67	0.37	0.23	0.01	0.23	0.36	0.40	0.41	0.19	0.00	0.17	0.41						
145	0.57	0.30	0.21	0.01	0.21	0.32	0.37	0.37	0.15	0.00	0.14	0.37						
150	0.50	0.24	0.18	0.01	0.19	0.28	0.32	0.32	0.13	0.00	0.13	0.30						
155	0.43	0.18	0.17	0.01	0.17	0.21	0.26	0.26	0.12	0.00	0.13	0.25						
160	0.35	0.13	0.16	0.01	0.14	0.19	0.21	0.22	0.08	0.00	0.12	0.18						
165	0.28	0.10	0.16	0.01	0.11	0.13	0.15	0.18	0.05	0.00	0.12	0.15						
170	0.11	0.08	0.13	0.01	0.06	0.07	0.04	0.11	0.04	0.00	0.08	0.14						
175	0.08	0.06	0.10	0.01	0.04	0.02	0.02	0.07	0.01	0.00	0.06	0.12						
180	0.02	0.01	0.02	0.01	0.01	0.01	0.02	0.02	0.01	0.00	0.01	0.02						

C Range: 0 - 360DEG  
C Interval: 30.0DEG  
Test Speed: HIGH  
Temperature:25.3DEG  
Operators:LPC  
Test Date:2021-12-15

γ Range: 0 - 180DEG  
γ Interval: 1.0DEG  
Test System:EVERFINE GO-2000B\_V1 SYSTEM V2.0.362  
Humidity:65.0%  
Test Distance:9.200m [K=1.0000]  
Remarks:

Photometric Data Table [cd]

G/C	0.0	30.0	60.0	90.0	120.0	150.0	180.0	210.0	240.0	270.0
0.0	2.995	3.005	2.980	2.985	2.990	2.990	2.995	3.005	2.980	2.985
3.0	3.015	3.000	2.985	2.975	3.005	2.975	2.975	3.005	2.975	2.985
6.0	3.010	2.976	2.982	2.950	3.010	2.950	2.955	3.000	2.950	2.983
9.0	3.005	2.964	2.979	2.925	2.980	2.930	2.938	2.995	2.925	2.980
12.0	2.999	2.950	2.975	2.885	2.945	2.910	2.918	2.960	2.880	2.935
15.0	2.985	2.935	2.925	2.849	2.905	2.870	2.890	2.930	2.849	2.870
18.0	2.975	2.910	2.880	2.779	2.850	2.849	2.870	2.895	2.779	2.810
21.0	2.955	2.860	2.820	2.709	2.790	2.804	2.850	2.855	2.714	2.719
24.0	2.940	2.819	2.754	2.628	2.724	2.769	2.814	2.820	2.638	2.634
27.0	2.910	2.774	2.674	2.538	2.649	2.719	2.784	2.769	2.568	2.533
30.0	2.885	2.744	2.589	2.437	2.573	2.693	2.749	2.729	2.487	2.428
33.0	2.855	2.689	2.503	2.327	2.493	2.613	2.704	2.669	2.402	2.312
36.0	2.815	2.648	2.413	2.201	2.408	2.548	2.648	2.608	2.321	2.192
39.0	2.769	2.608	2.322	2.080	2.307	2.482	2.593	2.538	2.226	2.066
42.0	2.724	2.523	2.227	1.950	2.207	2.407	2.548	2.463	2.136	1.930
45.0	2.674	2.452	2.131	1.814	2.106	2.357	2.513	2.397	2.040	1.790
48.0	2.639	2.392	2.026	1.673	1.996	2.286	2.447	2.327	1.924	1.644
51.0	2.589	2.337	1.925	1.537	1.885	2.206	2.397	2.272	1.814	1.508
54.0	2.548	2.281	1.820	1.402	1.769	2.141	2.352	2.196	1.698	1.362
57.0	2.493	2.206	1.719	1.256	1.649	2.065	2.281	2.121	1.588	1.207
60.0	2.428	2.136	1.609	1.115	1.558	1.980	2.211	2.041	1.487	1.051
63.0	2.367	2.065	1.513	0.9595	1.453	1.905	2.151	1.965	1.387	0.9001
66.0	2.302	1.985	1.408	0.8087	1.347	1.834	2.086	1.895	1.281	0.7443
69.0	2.237	1.915	1.307	0.6729	1.242	1.759	2.030	1.819	1.161	0.5884
72.0	2.181	1.839	1.202	0.5122	1.136	1.683	1.970	1.744	1.070	0.4428
75.0	2.111	1.764	1.116	0.3715	1.036	1.613	1.890	1.674	0.9597	0.3020
78.0	2.036	1.708	1.016	0.2309	0.9502	1.563	1.824	1.603	0.8692	0.1762
81.0	1.975	1.628	0.9400	0.1202	0.8697	1.487	1.754	1.543	0.7937	0.0706
84.0	1.895	1.558	0.8597	0.0150	0.7994	1.412	1.683	1.473	0.7184	0.0001
87.0	1.825	1.487	0.7993	0.0050	0.7290	1.342	1.603	1.397	0.6582	0
90.0	1.734	1.422	0.7388	0.0050	0.6686	1.266	1.523	1.327	0.5980	0
93.0	1.659	1.337	0.6837	0.0050	0.6183	1.196	1.462	1.252	0.5426	0
96.0	1.583	1.271	0.6385	0.0050	0.5731	1.155	1.387	1.186	0.5224	0
99.0	1.483	1.091	0.6033	0.0050	0.5430	0.9598	1.281	1.031	0.4673	0
102.0	1.407	1.040	0.5532	0.0050	0.4529	0.9297	1.221	0.9953	0.4262	0
105.0	1.337	1.005	0.4778	0.0050	0.3770	0.8894	1.160	0.9600	0.3939	0
108.0	1.257	0.9548	0.4627	0.0050	0.3662	0.8438	1.085	0.8949	0.3617	0
111.0	1.191	0.9246	0.4475	0.0050	0.3555	0.7587	0.9947	0.8444	0.3115	0
114.0	1.126	0.8693	0.4424	0.0050	0.3467	0.7105	0.9197	0.8041	0.2914	0
117.0	1.066	0.8541	0.4372	0.0050	0.3167	0.6864	0.8643	0.7490	0.2863	0
120.0	1.005	0.7889	0.3872	0.0050	0.2966	0.6533	0.8240	0.7087	0.2622	0
123.0	0.9551	0.7537	0.3620	0.0050	0.2915	0.6081	0.7688	0.6635	0.2502	0
126.0	0.8998	0.7035	0.3268	0.0050	0.2795	0.5677	0.7234	0.6183	0.2352	0
129.0	0.8497	0.6480	0.3066	0.0050	0.2664	0.5176	0.6730	0.5881	0.2178	0
132.0	0.8043	0.5625	0.2815	0.0050	0.2514	0.4723	0.5826	0.5279	0.2061	0
135.0	0.7491	0.4723	0.2564	0.0050	0.2512	0.4019	0.4825	0.4526	0.2060	0
138.0	0.6988	0.4119	0.2463	0.0050	0.2362	0.3733	0.4471	0.4223	0.2059	0
141.0	0.6535	0.3568	0.2262	0.0050	0.2312	0.3603	0.3870	0.4071	0.1907	0
144.0	0.5934	0.3165	0.2111	0.0050	0.2211	0.3366	0.3669	0.3720	0.1557	0
147.0	0.5530	0.2713	0.1911	0.0101	0.2011	0.2965	0.3565	0.3518	0.1427	0
150.0	0.5027	0.2361	0.1809	0.0101	0.1910	0.2813	0.3161	0.3217	0.1322	0
153.0	0.4626	0.1960	0.1731	0.0101	0.1760	0.2361	0.2802	0.2815	0.1250	0
156.0	0.4073	0.1658	0.1688	0.0101	0.1609	0.2060	0.2412	0.2514	0.1178	0
159.0	0.3620	0.1357	0.1648	0.0101	0.1408	0.1909	0.2151	0.2292	0.0953	0
162.0	0.3268	0.1181	0.1610	0.0101	0.1307	0.1507	0.1973	0.2082	0.0602	0
165.0	0.2767	0.1005	0.1558	0.0101	0.1106	0.1326	0.1507	0.1761	0.0502	0
168.0	0.1258	0.0954	0.1358	0.0101	0.0855	0.1105	0.0502	0.1258	0.0352	0
171.0	0.1006	0.0753	0.1207	0.0050	0.0603	0.0651	0.0352	0.1006	0.0200	0
174.0	0.0806	0.0603	0.1106	0.0050	0.0503	0.0350	0.0251	0.0855	0.0050	0
177.0	0.0604	0.0401	0.0804	0.0050	0.0102	0.0050	0.0151	0.0504	0.0050	0
180.0	0.0201	0.0050	0.0151	0.0050	0.0101	0.0050	0.0151	0.0201	0.0050	0
G/C	300.0	330.0								
0.0	2.990	2.990								
3.0	2.975	3.010								
6.0	2.965	3.010								
9.0	2.940	3.010								
12.0	2.910	3.005								
15.0	2.865	2.980								
18.0	2.804	2.940								
21.0	2.739	2.900								
24.0	2.688	2.865								
27.0	2.588	2.830								
30.0	2.502	2.794								

C Range: 0 - 360DEG  
 C Interval: 30.0DEG  
 Test Speed: HIGH  
 Temperature: 25.3DEG  
 Operators: LPC  
 Test Date: 2021-12-15

γ Range: 0 - 180DEG  
 γ Interval: 1.0DEG  
 Test System: EVERFINE GO-2000B\_V1 SYSTEM V2.0.362  
 Humidity: 65.0%  
 Test Distance: 9.200m [K=1.0000]  
 Remarks:

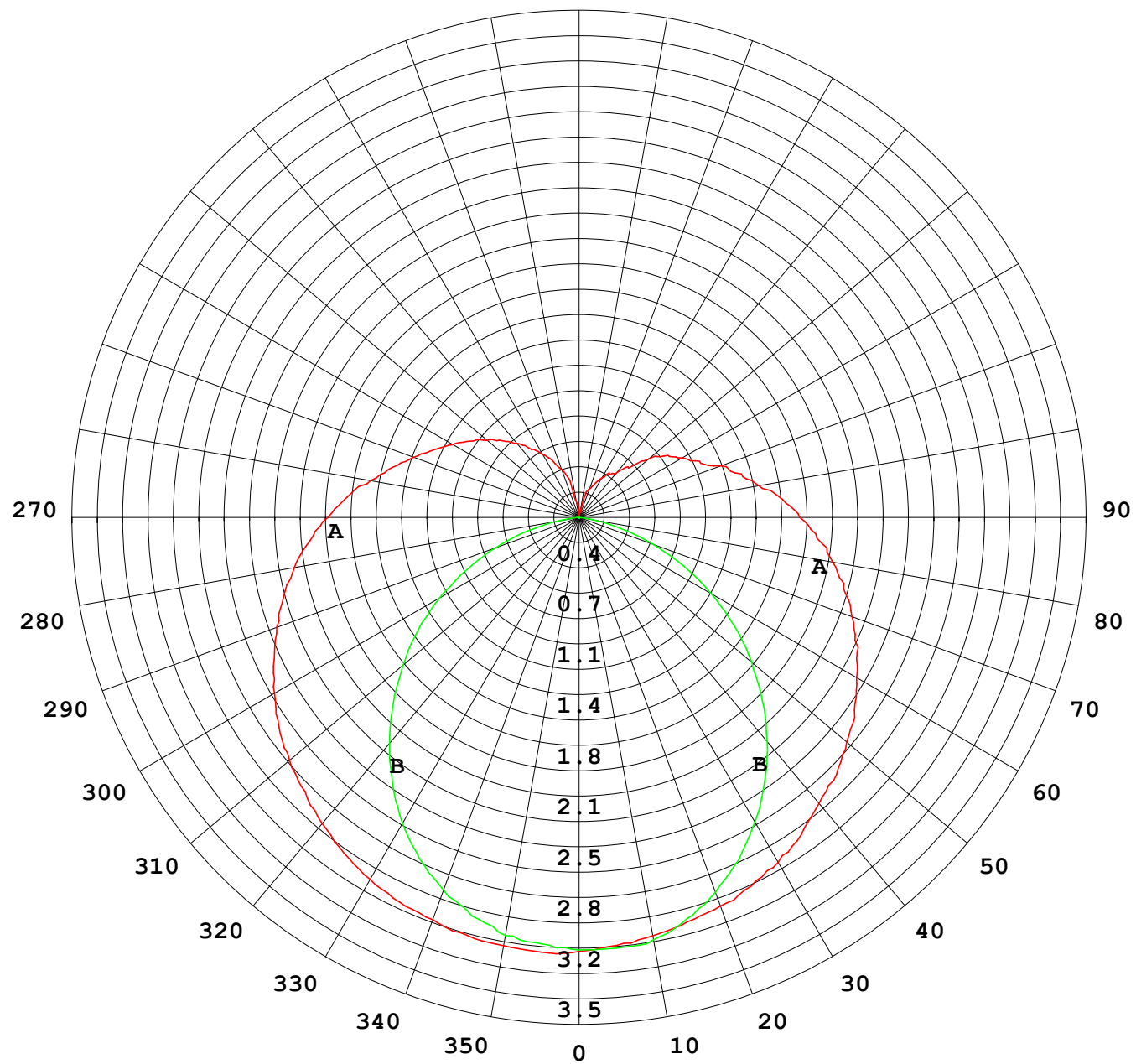
## Photometric Data Table [cd]

33.0	2.412	2.754
36.0	2.327	2.704
39.0	2.241	2.649
42.0	2.156	2.583
45.0	2.065	2.518
48.0	1.970	2.448
51.0	1.869	2.397
54.0	1.759	2.332
57.0	1.653	2.267
60.0	1.553	2.201
63.0	1.452	2.126
66.0	1.347	2.051
69.0	1.251	1.975
72.0	1.151	1.905
75.0	1.055	1.835
78.0	0.9547	1.759
81.0	0.8742	1.689
84.0	0.8037	1.614
87.0	0.7485	1.558
90.0	0.6834	1.478
93.0	0.6182	1.407
96.0	0.6076	1.337
99.0	0.5376	1.177
102.0	0.5122	1.126
105.0	0.4459	1.076
108.0	0.4415	1.025
111.0	0.4372	0.9751
114.0	0.3669	0.9299
117.0	0.3566	0.8797
120.0	0.3166	0.8494
123.0	0.3064	0.8092
126.0	0.2833	0.7590
129.0	0.2710	0.7038
132.0	0.2261	0.5985
135.0	0.2109	0.5530
138.0	0.1958	0.4876
141.0	0.1657	0.3972
144.0	0.1407	0.3770
147.0	0.1336	0.3369
150.0	0.1304	0.3017
153.0	0.1272	0.2664
156.0	0.1241	0.2363
159.0	0.1209	0.2011
162.0	0.1177	0.1659
165.0	0.1156	0.1508
168.0	0.1052	0.1448
171.0	0.0702	0.1357
174.0	0.0553	0.1206
177.0	0.0401	0.0955
180.0	0.0050	0.0151

C Range: 0 - 360DEG  
 C Interval: 30.0DEG  
 Test Speed: HIGH  
 Temperature: 25.3DEG  
 Operators: LPC  
 Test Date: 2021-12-15

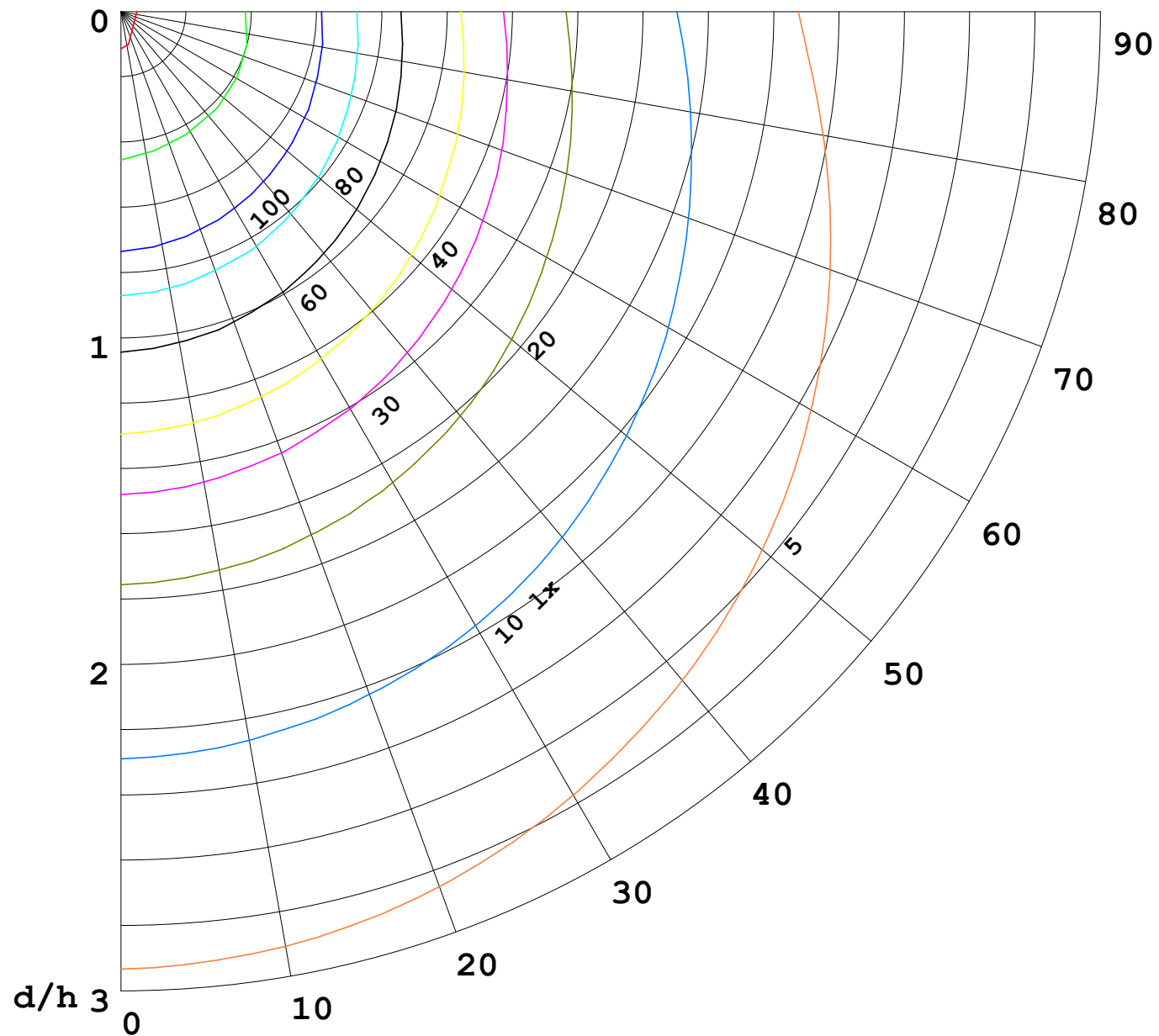
γ Range: 0 - 180DEG  
 γ Interval: 1.0DEG  
 Test System: EVERFINE GO-2000B\_V1 SYSTEM V2.0.362  
 Humidity: 65.0%  
 Test Distance: 9.200m [K=1.0000]  
 Remarks:

I (cd)



1000 lm

$\kappa = 1$



F = 5000 lm  
 K = 0.7  
 Hcc = 0.0 m  
 Hfc = 0.0 m  
 Eave = 100 lx

	Pcc	Pw	Pfc
—	70	50	30
—	50	30	20

