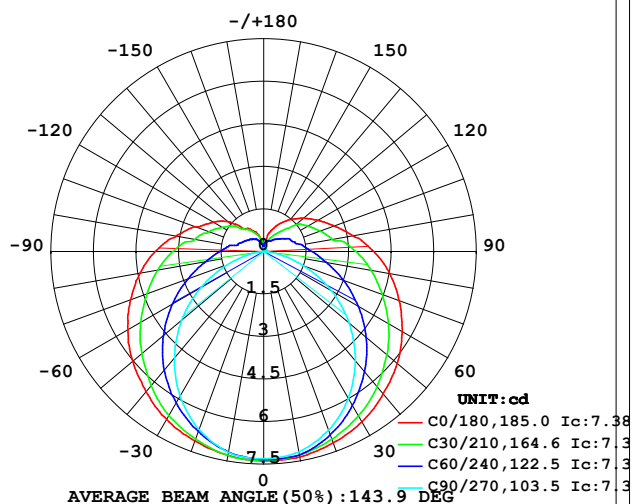


LUMINAIRE PHOTOMETRIC TEST REPORT

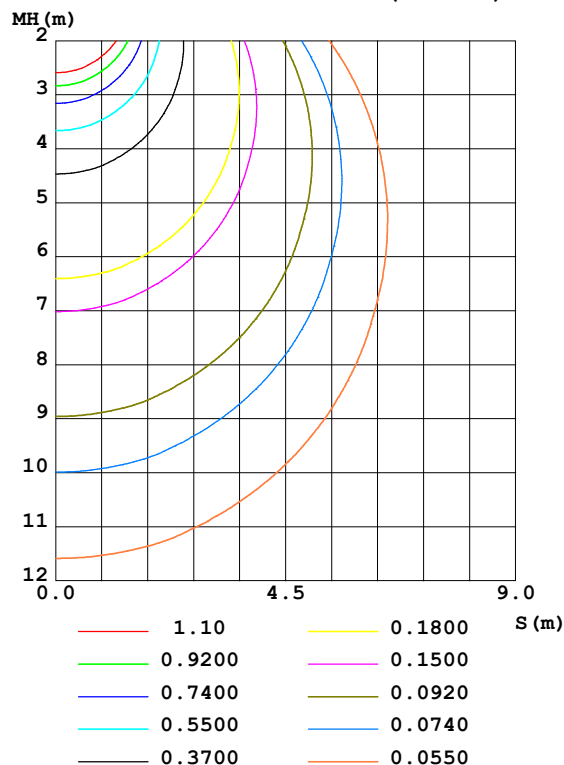
Test:U:24.00V I:0.3160A P:7.584W PF:1.000 Freq:50.00Hz Lamp Flux:35.676x1 lm		
NAME: SF21-24V-5050-70-DMX3-RGB-R	TYPE: 硅胶	WEIGHT:
SPEC.:	DIM.: 28mm*11.5mm	SERIAL No.:2021121511
MFR.: OLYMPIA	SUR.:1*0.016	Shielding Angle:

DATA OF LAMP		PHOTOMETRIC DATA				Eff: 4.70 lm/W
MODEL	5050	I _{max} (cd)	7.383	S/MH (C0/180)	1.40	
NOMINAL POWER (W)	5	LOR (%)	100.0	S/MH (C90/270)	1.20	
RATED VOLTAGE (V)	24	TOTAL FLUX (lm)	35.676	η UP, DN (C0-180)	10.9, 39.4	
NOMINAL FLUX (lm)	35.676	CIE CLASS	SEMI-D.	η UP, DN (C180-360)	10.7, 39.1	
LAMPS INSIDE	1	η up (%)	21.6	CIBSE SHR NOM	1.50	
TEST VOLTAGE (V)	24	η down (%)	78.4	CIBSE SHR MAX	1.55	

LUMINOUS INTENSITY DISTRIBUTION DIAGRAM



C0 PLANE ISOLUX DIAGRAM (UNIT:lx)



C Range: 0 - 360DEG
C Interval: 30.0DEG
Test Speed: HIGH
Temperature: 25.3DEG
Operators: LPC
Test Date: 2021-12-15

γ Range: 0 - 180DEG
γ Interval: 1.0DEG
Test System: EVERFINE GO-2000B_V1 SYSTEM V2.0.362
Humidity: 65.0%
Test Distance: 9.200m [K=1.0000]
Remarks:

ZONAL FLUX DIAGRAM

ZONAL FLUX DIAGRAM:

γ	C0	C45	C90	C135	C180	C225	C270	C315	γ	Φ zone	Φ total	%lum, lamp
10	7.363	7.287	7.186	7.194	7.297	7.242	7.192	7.237	0- 10	0.6960	0.6960	1.95,1.95
20	7.182	6.956	6.699	6.855	7.106	6.893	6.685	6.875	10- 20	2.004	2.700	7.57,7.57
30	6.936	6.473	5.980	6.390	6.850	6.428	5.891	6.395	20- 30	3.082	5.782	16.2,16.2
40	6.559	5.875	5.025	5.782	6.457	5.817	4.891	5.827	30- 40	3.835	9.617	27,27
50	6.147	5.194	3.944	5.081	6.035	5.113	3.785	5.164	40- 50	4.207	13.82	38.7,38.7
60	5.639	4.463	2.758	4.317	5.533	4.362	2.564	4.450	50- 60	4.210	18.03	50.6,50.6
70	5.082	3.729	1.522	3.583	4.995	3.613	1.363	3.721	60- 70	3.876	21.91	61.4,61.4
80	4.514	3.051	0.4314	2.913	4.427	2.937	0.3173	3.048	70- 80	3.329	25.24	70.7,70.7
90	3.881	2.478	0.0603	2.355	3.824	2.377	0.0101	2.480	80- 90	2.740	27.98	78.4,78.4
100	3.197	1.910	0.0754	1.824	3.131	1.849	0.0101	1.932	90-100	2.227	30.21	84.7,84.7
110	2.649	1.591	0.0804	1.420	2.557	1.462	0.0101	1.624	100-110	1.704	31.91	89.4,89.4
120	2.202	1.355	0.0854	1.181	2.065	1.231	0.0201	1.361	110-120	1.326	33.24	93.2,93.2
130	1.825	1.068	0.0955	0.9951	1.638	1.019	0.0503	1.101	120-130	1.002	34.24	96,96
140	1.473	0.7337	0.1057	0.7890	1.035	0.7991	0.0553	0.7438	130-140	0.6647	34.90	97.8,97.8
150	1.136	0.5227	0.1107	0.6333	0.8838	0.6683	0.0553	0.5450	140-150	0.4136	35.32	99,99
160	0.7944	0.4022	0.1125	0.4724	0.6731	0.4925	0.0653	0.4113	150-160	0.2347	35.55	99.7,99.7
170	0.3118	0.3141	0.1143	0.2889	0.2501	0.3091	0.0704	0.3367	160-170	0.1031	35.65	99.9,99.9
180	0.1357	0.1282	0.1156	0.1131	0.1357	0.1231	0.0754	0.1081	170-180	0.0217	35.68	100,100
DEG	LUMINOUS INTENSITY:cd									UNIT:lm		

Conical surface Flux(90deg): 11.698 lm

%lum = 32.8%

%lamp = 32.8%

Conical surface Flux(120deg): 18.034 lm

%lum = 50.6%

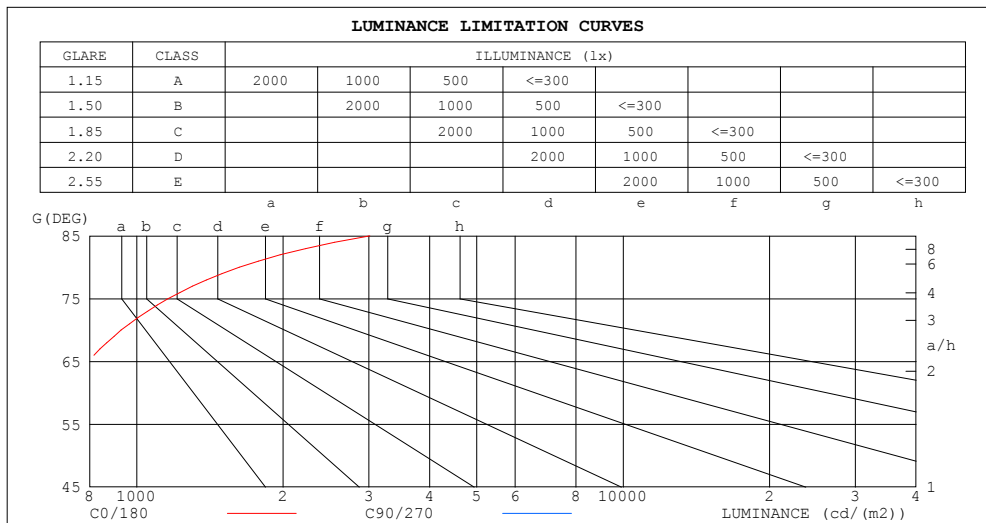
%lamp = 50.6%

C Range: 0 - 360DEG
 C Interval: 30.0DEG
 Test Speed: HIGH
 Temperature:25.3DEG
 Operators:LPC
 Test Date:2021-12-15

γ Range: 0 - 180DEG
 γ Interval: 1.0DEG
 Test System:EVERFINE GO-2000B_V1 SYSTEM V2.0.362
 Humidity:65.0%
 Test Distance:9.200m [K=1.0000]
 Remarks:

LUMINANCE LIMITATION CURVES

Test:U:24.00V I:0.3160A P:7.584W PF:1.000 Freq:50.00Hz Lamp Flux:35.676x1 lm		
NAME: SF21-24V-5050-70-DMX3-RGB-R	TYPE: 硅胶	WEIGHT:
SPEC.:	DIM.: 28mm*11.5mm	SERIAL No.:2021121511
MFR.: OLYMPIA	SUR.:1*0.016	Shielding Angle:



LUMINANCE cd/(m2)		
G (DEG)	C0/180	C90/270
85	3014	40
80	1625	155
75	1160	228
70	929	278
65	793	316
60	705	345
55	644	365
50	598	383
45	562	397

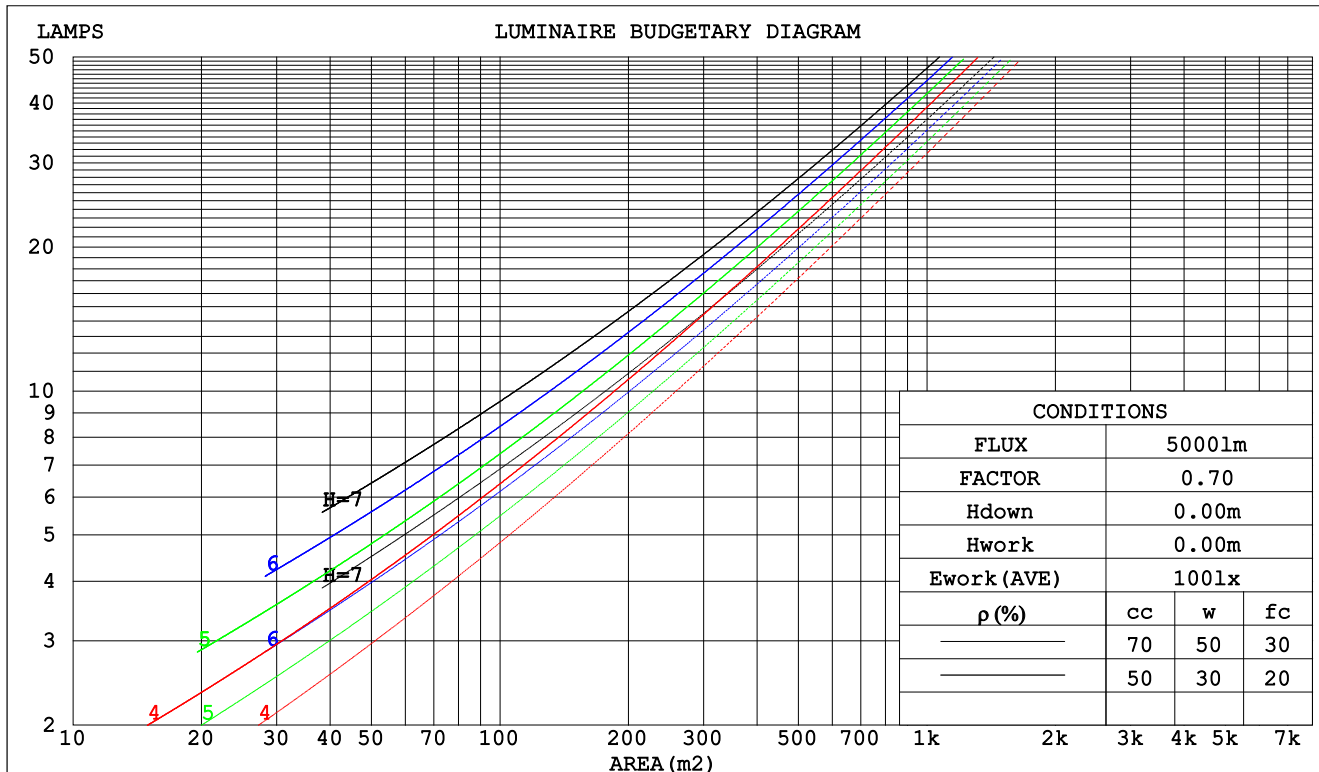
C Range: 0 - 360DEG
C Interval: 30.0DEG
Test Speed: HIGH
Temperature:25.3DEG
Operators:LPC
Test Date:2021-12-15

γ Range: 0 - 180DEG
 γ Interval: 1.0DEG
Test System:EVERFINE GO-2000B_V1 SYSTEM V2.0.362
Humidity:65.0%
Test Distance:9.200m [K=1.0000]
Remarks:

CU AND LUMINAIRE BUDGETARY ESTIMATE DIAGRAM

Test:U:24.00V I:0.3160A P:7.584W PF:1.000 Freq:50.00Hz Lamp Flux:35.676x1 lm		
NAME: SF21-24V-5050-70-DMX3-RGB-R	TYPE: 硅胶	WEIGHT:
SPEC.:	DIM.: 28mm*11.5mm	SERIAL No.:2021121511
MFR.: OLYMPIA	SUR.:1*0.016	Shielding Angle:

pcc	80%			70%			50%			30%			10%			0
pw	50%	30%	10%	50%	30%	10%	50%	30%	10%	50%	30%	10%	50%	30%	10%	0
pfc	20%			20%			20%			20%			20%			0
RCR	RCR:Room Cavity Ratio			Coefficients of Utilization(CU)												
0.0	1.14	1.14	1.14	1.09	1.09	1.09	.99	.99	.99	.90	.90	.90	.82	.82	.82	.78
1.0	.95	.89	.84	.90	.85	.81	.82	.78	.75	.74	.71	.68	.67	.65	.63	.59
2.0	.81	.73	.66	.77	.70	.64	.70	.64	.59	.63	.59	.55	.57	.54	.50	.47
3.0	.70	.61	.54	.67	.59	.52	.61	.54	.48	.55	.50	.45	.50	.45	.41	.38
4.0	.62	.52	.45	.59	.50	.43	.54	.46	.41	.49	.43	.38	.44	.39	.35	.32
5.0	.55	.45	.38	.52	.43	.37	.48	.40	.35	.43	.37	.32	.39	.34	.30	.27
6.0	.49	.40	.33	.47	.38	.32	.43	.35	.30	.39	.33	.28	.36	.30	.26	.23
7.0	.44	.35	.29	.42	.34	.28	.39	.31	.26	.35	.29	.25	.32	.27	.23	.21
8.0	.40	.31	.25	.38	.30	.25	.35	.28	.23	.32	.26	.22	.30	.24	.20	.18
9.0	.37	.28	.23	.35	.27	.22	.32	.26	.21	.30	.24	.20	.27	.22	.18	.16
10.0	.34	.26	.20	.32	.25	.20	.30	.23	.19	.28	.22	.18	.25	.20	.17	.15



C Range: 0 - 360DEG
 C Interval: 30.0DEG
 Test Speed: HIGH
 Temperature:25.3DEG
 Operators:LPC
 Test Date:2021-12-15

γ Range: 0 - 180DEG
 γ Interval: 1.0DEG
 Test System:EVERFINE GO-2000B_V1 SYSTEM V2.0.362
 Humidity:65.0%
 Test Distance:9.200m [K=1.0000]
 Remarks:

WEC AND CCEC

Test:U:24.00V I:0.3160A P:7.584W PF:1.000 Freq:50.00Hz Lamp Flux:35.676x1 lm		
NAME: SF21-24V-5050-70-DMX3-RGB-R	TYPE: 硅胶	WEIGHT:
SPEC.:	DIM.: 28mm*11.5mm	SERIAL No.:2021121511
MFR.: OLYMPIA	SUR.:1*0.016	Shielding Angle:

pcc	80%			70%			50%			30%			10%			0	
pw	50%	30%	10%	50%	30%	10%	50%	30%	10%	50%	30%	10%	50%	30%	10%	0	
pfc	20%			20%			20%			20%			20%			0	
RCR	RCR:Room Cavity Ratio						Wall Exitance Coefficients(WEC)										
0.0																	
1.0	.386	.220	.070	.373	.212	.068	.347	.199	.064	.323	.186	.060	.301	.174	.056		
2.0	.333	.182	.056	.320	.177	.054	.297	.165	.051	.276	.155	.048	.256	.145	.046		
3.0	.295	.157	.047	.284	.152	.046	.263	.142	.043	.243	.133	.041	.225	.125	.039		
4.0	.265	.138	.041	.255	.134	.039	.236	.125	.037	.218	.117	.035	.201	.109	.033		
5.0	.241	.123	.036	.232	.119	.035	.214	.112	.033	.198	.104	.031	.183	.098	.029		
6.0	.221	.111	.032	.212	.107	.031	.196	.101	.029	.181	.094	.028	.167	.088	.026		
7.0	.204	.101	.029	.196	.098	.028	.181	.092	.026	.167	.086	.025	.155	.080	.024		
8.0	.189	.092	.026	.182	.090	.025	.168	.084	.024	.156	.079	.023	.144	.074	.021		
9.0	.176	.085	.024	.169	.083	.023	.157	.078	.022	.145	.073	.021	.134	.068	.020		
10.0	.165	.079	.022	.159	.077	.021	.147	.072	.020	.136	.068	.019	.126	.063	.018		

pcc	80%			70%			50%			30%			10%			0
pw	50%	30%	10%	50%	30%	10%	50%	30%	10%	50%	30%	10%	50%	30%	10%	0
pfc	20%			20%			20%			20%			20%			0
RCR	RCR:Room Cavity Ratio						Ceiling Cavity Exitance Coefficients(CCEC)									
0.0	.355	.355	.355	.303	.303	.303	.207	.207	.207	.119	.119	.119	.038	.038	.038	
1.0	.351	.321	.294	.301	.276	.253	.206	.190	.175	.118	.110	.102	.038	.035	.033	
2.0	.345	.299	.260	.295	.257	.225	.202	.178	.157	.117	.103	.092	.037	.033	.030	
3.0	.337	.282	.238	.289	.243	.207	.198	.169	.145	.115	.099	.085	.037	.032	.028	
4.0	.329	.270	.224	.283	.233	.195	.194	.162	.137	.112	.095	.081	.036	.031	.027	
5.0	.322	.260	.215	.276	.225	.187	.190	.157	.132	.110	.092	.078	.036	.030	.026	
6.0	.314	.252	.208	.270	.218	.181	.186	.153	.128	.108	.090	.076	.035	.029	.025	
7.0	.307	.246	.203	.264	.213	.176	.183	.149	.125	.106	.088	.074	.034	.029	.025	
8.0	.301	.240	.199	.259	.208	.173	.179	.146	.123	.104	.086	.073	.034	.028	.024	
9.0	.294	.235	.196	.254	.204	.171	.176	.144	.121	.102	.085	.072	.033	.028	.024	
10.0	.289	.231	.193	.249	.201	.169	.173	.141	.120	.101	.084	.071	.033	.027	.024	

C Range: 0 - 360DEG
C Interval: 30.0DEG
Test Speed: HIGH
Temperature:25.3DEG
Operators:LPC
Test Date:2021-12-15

γ Range: 0 - 180DEG
γ Interval: 1.0DEG
Test System:EVERFINE GO-2000B_V1 SYSTEM V2.0.362
Humidity:65.0%
Test Distance:9.200m [K=1.0000]
Remarks:

UGR(Unified Glare Rating) Table

Test:U:24.00V I:0.3160A P:7.584W PF:1.000 Freq:50.00Hz Lamp Flux:35.676x1 lm											
NAME: SF21-24V-5050-70-DMX3-RGB-R						TYPE:硅胶			WEIGHT:		
SPEC.:						DIM.: 28mm*11.5mm			SERIAL No.:2021121511		
MFR.: OLYMPIA						SUR.:1*0.016			Shielding Angle:		
ceiling/cavity	0.7	0.7	0.5	0.5	0.3	0.7	0.7	0.5	0.5	0.3	
walls	0.5	0.3	0.5	0.3	0.3	0.5	0.3	0.5	0.3	0.3	
working plane	0.2	0.2	0.2	0.2	0.2	0.2	0.2	0.2	0.2	0.2	
Room dimensions		Viewed crosswise					Viewed endwise				
x = 2H y = 2H	2H	22.1	23.4	22.6	24.0	24.6	19.5	20.8	20.0	21.3	22.0
	3H	24.9	26.1	25.4	26.7	27.4	20.8	22.1	21.4	22.7	23.3
	4H	26.4	27.6	27.0	28.2	28.9	21.4	22.5	22.0	23.1	23.8
	6H	28.2	29.3	28.8	29.9	30.6	21.7	22.7	22.3	23.4	24.1
	8H	29.1	30.2	29.8	30.8	31.6	21.7	22.8	22.3	23.4	24.1
	12H	30.3	31.3	30.9	31.9	32.7	21.7	22.7	22.3	23.4	24.1
4H	2H	22.6	23.8	23.2	24.4	25.1	20.7	21.9	21.3	22.5	23.2
	3H	25.7	26.7	26.3	27.3	28.1	22.5	23.5	23.1	24.1	24.9
	4H	27.4	28.4	28.1	29.0	29.8	23.2	24.2	23.9	24.8	25.6
	6H	29.4	30.2	30.1	30.9	31.7	23.8	24.6	24.5	25.3	26.1
	8H	30.5	31.3	31.2	32.0	32.8	24.0	24.7	24.7	25.5	26.3
	12H	31.7	32.5	32.4	33.2	34.0	24.0	24.8	24.8	25.5	26.3
8H	4H	27.7	28.5	28.4	29.2	30.1	24.5	25.3	25.2	26.0	26.8
	6H	30.0	30.7	30.8	31.4	32.3	25.5	26.2	26.3	26.9	27.8
	8H	31.3	31.9	32.1	32.7	33.6	26.0	26.6	26.7	27.3	28.2
	12H	32.9	33.4	33.6	34.1	35.0	26.3	26.8	27.1	27.6	28.5
12H	4H	27.8	28.5	28.5	29.2	30.0	24.9	25.7	25.7	26.4	27.2
	6H	30.1	30.7	30.9	31.5	32.4	26.2	26.8	27.0	27.6	28.5
	8H	31.6	32.1	32.3	32.9	33.8	26.9	27.4	27.7	28.2	29.1
Variations with the observer position at spacings:											
S = 1.0H	+ 0.1 / - 0.1					+ 0.1 / - 0.1					
1.5H	+ 0.2 / - 0.2					+ 0.2 / - 0.3					
2.0H	+ 0.2 / - 0.3					+ 0.3 / - 0.4					

CIE Pub.117, 35.68 lm Total Lamp Luminous Flux Correct (8log(F/F0) = -11.6)

C Range: 0 - 360DEG
C Interval: 30.0DEG
Test Speed: HIGH
Temperature:25.3DEG
Operators:LPC
Test Date:2021-12-15

γ Range: 0 - 180DEG
γ Interval: 1.0DEG
Test System:EVERFINE GO-2000B_V1 SYSTEM V2.0.362
Humidity:65.0%
Test Distance:9.200m [K=1.0000]
Remarks:

UTILIZATION FACTORS TABLE

Test:U:24.00V I:0.3160A P:7.584W PF:1.000 Freq:50.00Hz Lamp Flux:35.676x1 lm		
NAME: SF21-24V-5050-70-DMX3-RGB-R	TYPE: 硅胶	WEIGHT:
SPEC.:	DIM.: 28mm*11.5mm	SERIAL No.:2021121511
MFR.: OLYMPIA	SUR.:1*0.016	Shielding Angle:

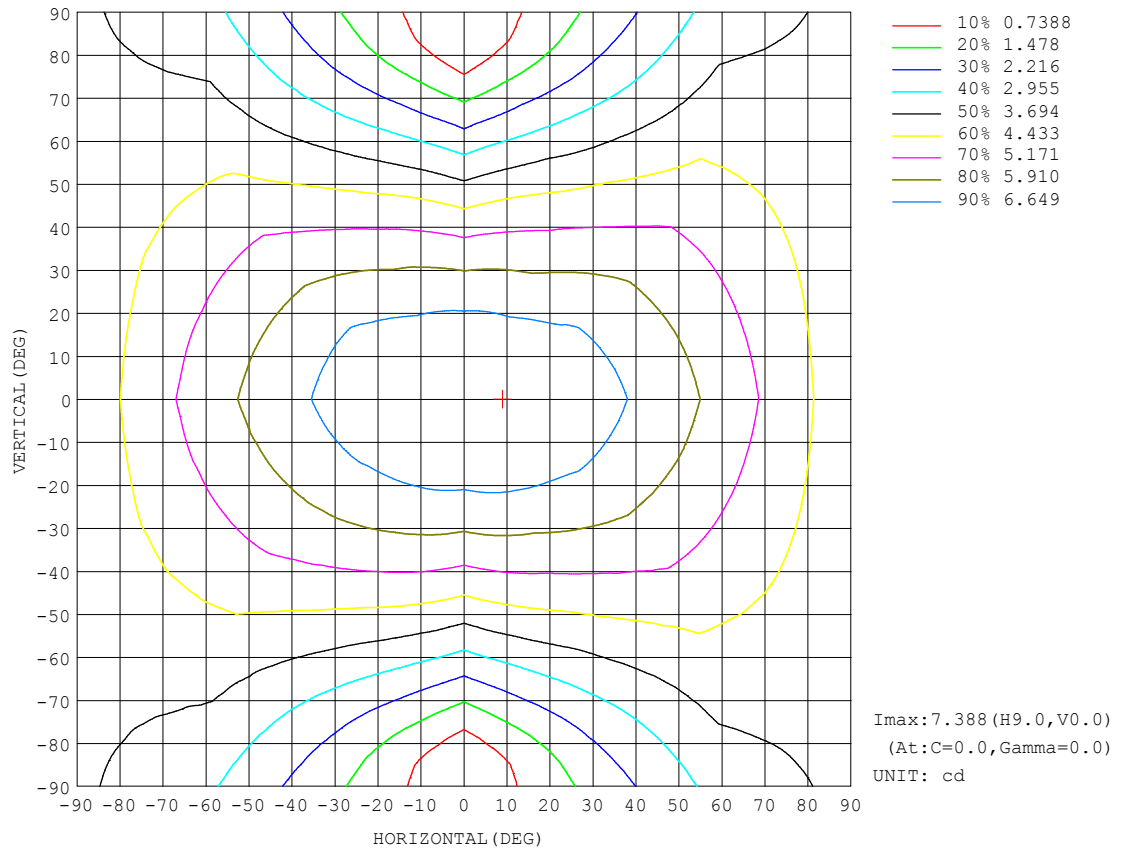
REFLECTANCE										
Ceiling	0.8	0.8	0.8	0.7	0.7	0.7	0.5	0.5	0.5	0
Walls	0.7	0.5	0.3	0.7	0.5	0.3	0.7	0.5	0.3	0
Working plane	0.2	0.2	0.2	0.2	0.2	0.2	0.2	0.2	0.2	0
ROOM INDEX	UTILIZATION FACTORS (PERCENT) $k(RI) \times RCR = 5$									
$k = 0.60$	47	34	27	45	34	27	43	33	26	19
0.80	56	43	35	54	42	34	51	40	33	25
1.00	63	50	42	61	49	41	57	49	40	31
1.25	70	58	49	68	56	48	63	53	46	36
1.50	75	63	54	72	61	53	67	58	51	40
2.00	83	71	63	79	69	61	73	65	58	46
2.50	87	77	69	84	74	67	77	69	63	50
3.00	91	81	74	87	79	72	80	73	67	53
4.00	96	88	81	91	84	78	84	78	73	58
5.00	99	92	86	94	88	83	86	81	77	61
ROOM INDEX	UF (total)									Direct
According to DIN EN 13032-2 2004			Suspended					SHRNOM = 1.25		

C Range: 0 - 360DEG
C Interval: 30.0DEG
Test Speed: HIGH
Temperature:25.3DEG
Operators:LPC
Test Date:2021-12-15

γ Range: 0 - 180DEG
 γ Interval: 1.0DEG
Test System:EVERFINE GO-2000B_V1 SYSTEM V2.0.362
Humidity:65.0%
Test Distance:9.200m [K=1.0000]
Remarks:

ISOCANDELA DIAGRAM

Test:U:24.00V I:0.3160A P:7.584W PF:1.000 Freq:50.00Hz Lamp Flux:35.676x1 lm		
NAME: SF21-24V-5050-70-DMX3-RGB-R	TYPE: 硅胶	WEIGHT:
SPEC.:	DIM.: 28mm*11.5mm	SERIAL No.:2021121511
MFR.: OLYMPIA	SUR.:1*0.016	Shielding Angle:

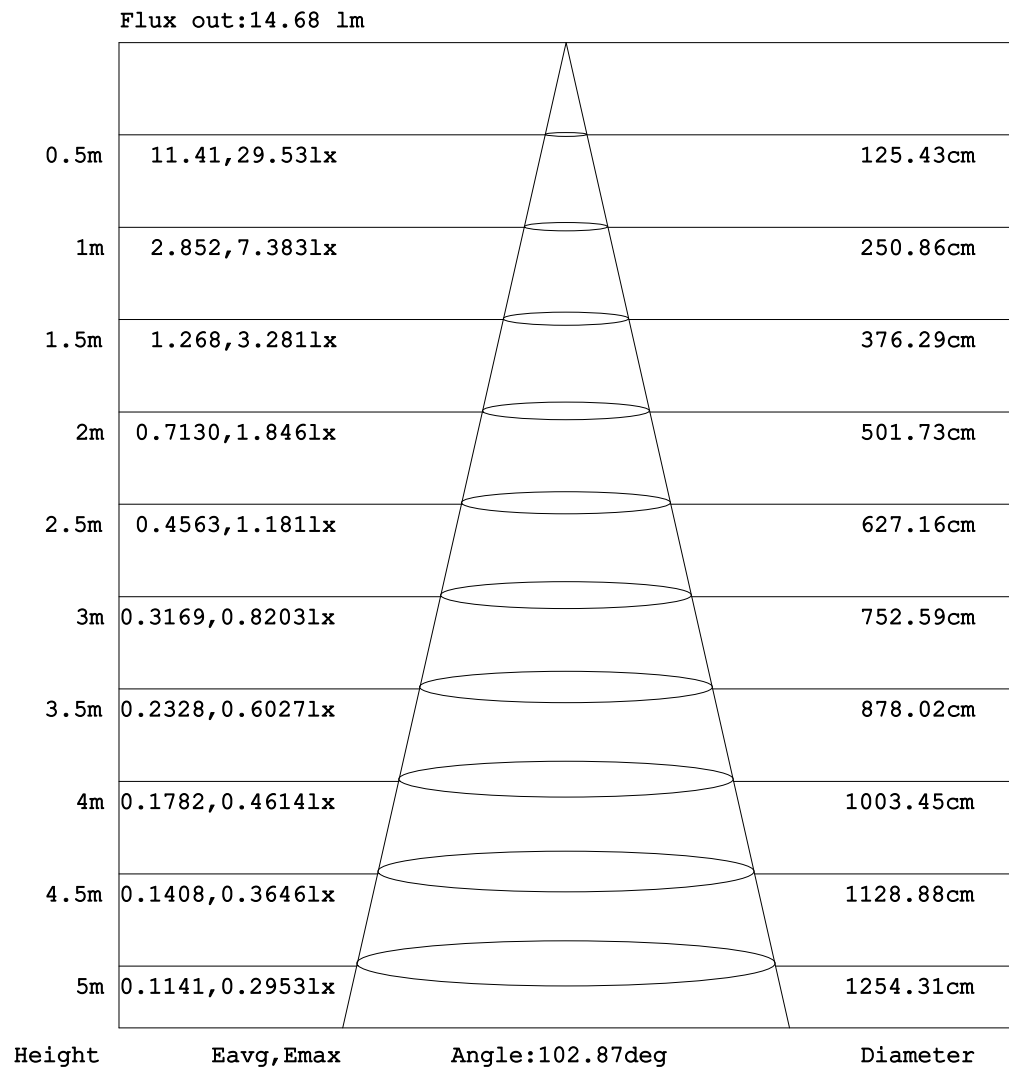


C Range: 0 - 360DEG
C Interval: 30.0DEG
Test Speed: HIGH
Temperature: 25.3DEG
Operators: LPC
Test Date: 2021-12-15

γ Range: 0 - 180DEG
 γ Interval: 1.0DEG
Test System: EVERFINE GO-2000B_V1 SYSTEM V2.0.362
Humidity: 65.0%
Test Distance: 9.200m [K=1.0000]
Remarks:

AAI Figure

Test:U:24.00V I:0.3160A P:7.584W PF:1.000 Freq:50.00Hz Lamp Flux:35.676x1 lm		
NAME: SF21-24V-5050-70-DMX3-RGB-R	TYPE: 硅胶	WEIGHT:
SPEC.:	DIM.: 28mm*11.5mm	SERIAL No.:2021121511
MFR.: OLYMPIA	SUR.:1*0.016	Shielding Angle:



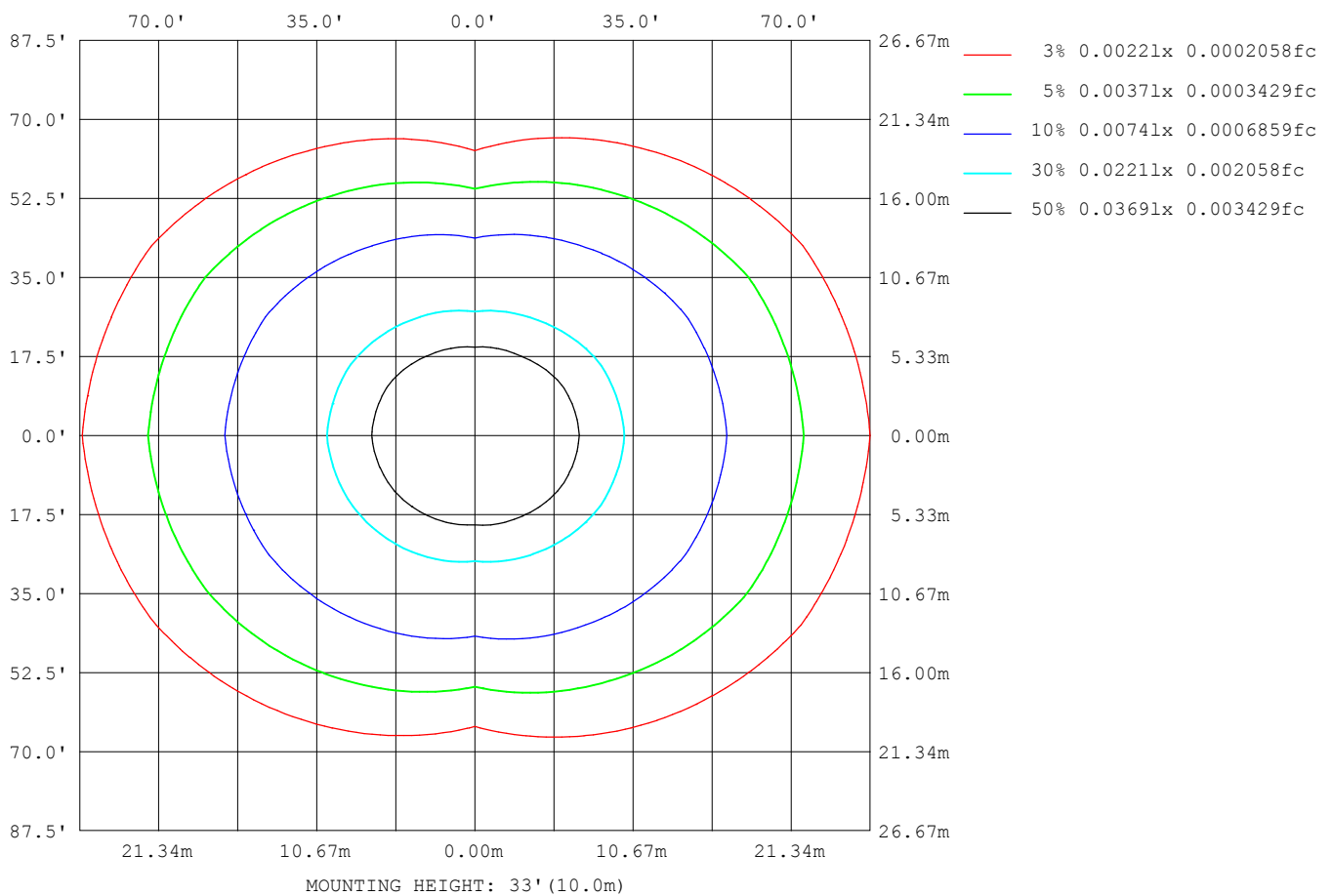
Note: The Curves indicate the illuminated area and the average illumination when the luminaire is at different distance.

C Range: 0 - 360DEG
 C Interval: 30.0DEG
 Test Speed: HIGH
 Temperature: 25.3DEG
 Operators: LPC
 Test Date: 2021-12-15

γ Range: 0 - 180DEG
 γ Interval: 1.0DEG
 Test System: EVERFINE GO-2000B_V1 SYSTEM V2.0.362
 Humidity: 65.0%
 Test Distance: 9.200m [K=1.0000]
 Remarks:

ISOLUX DIAGRAM

Test:U:24.00V I:0.3160A P:7.584W PF:1.000 Freq:50.00Hz Lamp Flux:35.676x1 lm		
NAME: SF21-24V-5050-70-DMX3-RGB-R	TYPE: 硅胶	WEIGHT:
SPEC.:	DIM.: 28mm*11.5mm	SERIAL No.:2021121511
MFR.: OLYMPIA	SUR.:1*0.016	Shielding Angle:



C Range: 0 - 360DEG
 C Interval: 30.0DEG
 Test Speed: HIGH
 Temperature: 25.3DEG
 Operators: LPC
 Test Date: 2021-12-15

γ Range: 0 - 180DEG
 γ Interval: 1.0DEG
 Test System: EVERFINE GO-2000B_V1 SYSTEM V2.0.362
 Humidity: 65.0%
 Test Distance: 9.200m [K=1.0000]
 Remarks:

LED Avg.L Report

Test:U:24.00V I:0.3160A P:7.584W PF:1.000 Freq:50.00Hz Lamp Flux:35.676x1 lm		
NAME: SF21-24V-5050-70-DMX3-RGB-R	TYPE:硅胶	WEIGHT:
SPEC.:	DIM.: 28mm*11.5mm	SERIAL No.:2021121511
MFR.: OLYMPIA	SUR.:1*0.016	Shielding Angle:

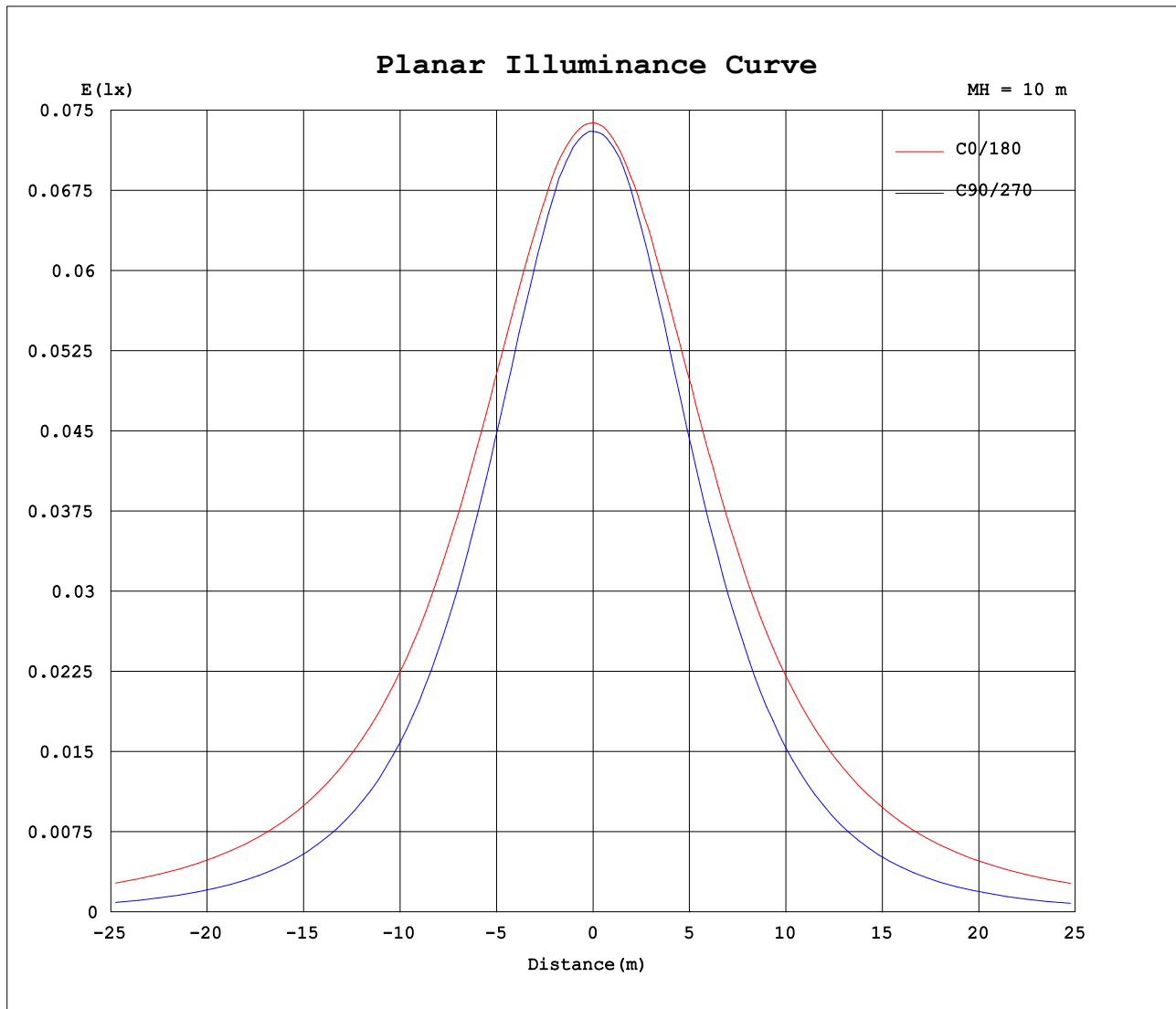
AvgL	cd/m2
L_0~180 (65) av	787
L_0~180 (75) av	1149
L_0~180 (85) av	2986
L_90~270 (65) av	302
L_90~270 (75) av	210
L_90~270 (85) av	36
L_45 (65) av	602
L_45 (75) av	814
L_45 (85) av	1985

Standard: GB/T 29293-2012

C Range: 0 - 360DEG
C Interval: 30.0DEG
Test Speed: HIGH
Temperature:25.3DEG
Operators:LPC
Test Date:2021-12-15

γ Range: 0 - 180DEG
γ Interval: 1.0DEG
Test System:EVERFINE GO-2000B_V1 SYSTEM V2.0.362
Humidity:65.0%
Test Distance:9.200m [K=1.0000]
Remarks:

Planar Illuminance Curve



C Range: 0 - 360DEG
C Interval: 30.0DEG
Test Speed: HIGH
Temperature: 25.3DEG
Operators: LPC
Test Date: 2021-12-15

γ Range: 0 - 180DEG
 γ Interval: 1.0DEG
Test System: EVERFINE GO-2000B_V1 SYSTEM V2.0.362
Humidity: 65.0%
Test Distance: 9.200m [K=1.0000]
Remarks:

LUMINOUS DISTRIBUTION INTENSITY DATA

Test:U:24.00V I:0.3160A P:7.584W PF:1.000 Freq:50.00Hz Lamp Flux:35.676x1 lm		
NAME: SF21-24V-5050-70-DMX3-RGB-R	TYPE: 硅胶	WEIGHT:
SPEC.:	DIM.: 28mm*11.5mm	SERIAL No.:2021121511
MFR.: OLYMPIA	SUR.:1*0.016	Shielding Angle:

Table--1

UNIT: cd

C (DEG) γ (DEG)	0	30	60	90	120	150	180	210	240	270	300	330						
0	7.38	7.37	7.34	7.30	7.30	7.29	7.38	7.37	7.34	7.30	7.30	7.29						
5	7.38	7.35	7.33	7.28	7.30	7.26	7.36	7.36	7.29	7.28	7.28	7.29						
10	7.36	7.29	7.29	7.19	7.21	7.18	7.30	7.30	7.18	7.19	7.19	7.29						
15	7.28	7.19	7.11	6.97	7.04	7.06	7.21	7.18	6.99	6.97	6.99	7.18						
20	7.18	7.04	6.88	6.70	6.80	6.92	7.11	7.04	6.75	6.68	6.74	7.01						
25	7.07	6.88	6.60	6.37	6.53	6.75	6.99	6.87	6.48	6.31	6.45	6.85						
30	6.94	6.68	6.26	5.98	6.22	6.56	6.85	6.69	6.17	5.89	6.10	6.69						
35	6.77	6.47	5.90	5.52	5.89	6.32	6.67	6.44	5.83	5.41	5.76	6.48						
40	6.56	6.22	5.53	5.02	5.51	6.06	6.46	6.18	5.46	4.89	5.41	6.24						
45	6.36	5.94	5.14	4.49	5.10	5.76	6.25	5.88	5.05	4.35	5.04	5.97						
50	6.15	5.67	4.72	3.94	4.67	5.50	6.04	5.61	4.62	3.79	4.63	5.69						
55	5.91	5.39	4.29	3.35	4.20	5.19	5.79	5.32	4.16	3.18	4.21	5.42						
60	5.64	5.08	3.85	2.76	3.76	4.87	5.53	5.01	3.72	2.56	3.77	5.13						
65	5.36	4.77	3.42	2.13	3.32	4.57	5.28	4.69	3.28	1.95	3.34	4.82						
70	5.08	4.46	3.00	1.52	2.90	4.27	4.99	4.38	2.84	1.36	2.93	4.51						
75	4.81	4.14	2.60	0.94	2.49	3.97	4.71	4.09	2.44	0.80	2.54	4.21						
80	4.51	3.85	2.25	0.43	2.14	3.68	4.43	3.79	2.08	0.32	2.18	3.92						
85	4.20	3.56	1.95	0.06	1.86	3.39	4.13	3.50	1.79	0.05	1.88	3.63						
90	3.88	3.25	1.70	0.06	1.61	3.10	3.82	3.21	1.55	0.01	1.64	3.32						
95	3.56	2.96	1.51	0.06	1.44	2.82	3.51	2.92	1.36	0.01	1.44	3.04						
100	3.20	2.45	1.37	0.08	1.30	2.35	3.13	2.46	1.24	0.01	1.31	2.56						
105	2.91	2.30	1.16	0.08	0.95	2.20	2.85	2.30	0.94	0.01	1.10	2.38						
110	2.65	2.12	1.06	0.08	0.92	1.92	2.56	2.05	0.88	0.01	1.06	2.19						
115	2.42	1.96	1.03	0.08	0.86	1.72	2.27	1.88	0.81	0.01	0.93	2.02						
120	2.20	1.80	0.90	0.09	0.76	1.60	2.07	1.70	0.76	0.02	0.85	1.87						
125	2.02	1.65	0.79	0.09	0.73	1.49	1.87	1.55	0.70	0.04	0.77	1.72						
130	1.82	1.44	0.69	0.10	0.67	1.32	1.64	1.38	0.66	0.05	0.68	1.52						
135	1.64	1.16	0.62	0.10	0.64	1.09	1.34	1.13	0.60	0.06	0.57	1.24						
140	1.47	0.92	0.55	0.11	0.62	0.96	1.04	1.01	0.59	0.06	0.50	0.99						
145	1.30	0.76	0.48	0.11	0.56	0.85	0.99	0.95	0.53	0.06	0.42	0.84						
150	1.14	0.62	0.42	0.11	0.51	0.75	0.88	0.82	0.51	0.06	0.38	0.71						
155	0.97	0.52	0.41	0.11	0.46	0.63	0.78	0.72	0.43	0.06	0.37	0.59						
160	0.79	0.40	0.40	0.11	0.40	0.54	0.67	0.63	0.35	0.07	0.36	0.46						
165	0.64	0.33	0.39	0.11	0.34	0.44	0.52	0.50	0.29	0.07	0.35	0.40						
170	0.31	0.29	0.34	0.11	0.26	0.32	0.25	0.40	0.22	0.07	0.30	0.38						
175	0.23	0.23	0.28	0.12	0.21	0.20	0.19	0.30	0.18	0.07	0.23	0.32						
180	0.14	0.13	0.13	0.12	0.12	0.11	0.14	0.13	0.12	0.08	0.09	0.13						

C Range: 0 - 360DEG
C Interval: 30.0DEG
Test Speed: HIGH
Temperature:25.3DEG
Operators:LPC
Test Date:2021-12-15

γ Range: 0 - 180DEG
γ Interval: 1.0DEG
Test System:EVERFINE GO-2000B_V1 SYSTEM V2.0.362
Humidity:65.0%
Test Distance:9.200m [K=1.0000]
Remarks:

Photometric Data Table [cd]

G/C	0.0	30.0	60.0	90.0	120.0	150.0	180.0	210.0	240.0	270.0
0.0	7.383	7.373	7.342	7.302	7.297	7.292	7.383	7.373	7.342	7.302
3.0	7.383	7.363	7.343	7.292	7.297	7.267	7.378	7.373	7.317	7.302
6.0	7.374	7.352	7.323	7.267	7.302	7.242	7.350	7.355	7.267	7.275
9.0	7.366	7.297	7.303	7.197	7.242	7.192	7.317	7.328	7.212	7.227
12.0	7.338	7.267	7.227	7.096	7.152	7.131	7.272	7.257	7.111	7.107
15.0	7.282	7.187	7.112	6.970	7.036	7.061	7.207	7.182	6.990	6.971
18.0	7.222	7.111	6.981	6.804	6.891	6.965	7.146	7.097	6.859	6.795
21.0	7.162	7.026	6.826	6.648	6.745	6.890	7.086	7.001	6.699	6.609
24.0	7.097	6.910	6.660	6.442	6.589	6.794	7.026	6.906	6.538	6.393
27.0	7.021	6.799	6.469	6.221	6.419	6.674	6.955	6.795	6.362	6.147
30.0	6.936	6.684	6.263	5.980	6.218	6.563	6.850	6.690	6.166	5.891
33.0	6.835	6.568	6.047	5.704	6.022	6.433	6.739	6.549	5.985	5.625
36.0	6.730	6.428	5.831	5.417	5.816	6.267	6.628	6.403	5.754	5.313
39.0	6.604	6.277	5.605	5.130	5.585	6.111	6.488	6.232	5.532	5.007
42.0	6.474	6.111	5.378	4.819	5.353	5.925	6.372	6.057	5.301	4.680
45.0	6.363	5.940	5.142	4.492	5.102	5.759	6.247	5.876	5.055	4.348
48.0	6.237	5.774	4.891	4.155	4.846	5.598	6.121	5.720	4.794	4.016
51.0	6.107	5.618	4.635	3.823	4.575	5.432	5.980	5.554	4.527	3.660
54.0	5.956	5.442	4.373	3.482	4.298	5.251	5.844	5.383	4.256	3.308
57.0	5.805	5.266	4.117	3.110	4.027	5.070	5.699	5.197	3.984	2.931
60.0	5.639	5.080	3.846	2.758	3.760	4.874	5.533	5.006	3.718	2.564
63.0	5.474	4.889	3.579	2.376	3.499	4.688	5.372	4.815	3.447	2.197
66.0	5.313	4.694	3.338	2.004	3.233	4.508	5.216	4.629	3.185	1.820
69.0	5.147	4.513	3.082	1.637	2.971	4.322	5.050	4.433	2.929	1.488
72.0	4.976	4.322	2.836	1.280	2.725	4.141	4.879	4.257	2.683	1.117
75.0	4.805	4.141	2.599	0.9440	2.489	3.975	4.714	4.086	2.437	0.7951
78.0	4.624	3.975	2.378	0.6123	2.272	3.804	4.543	3.911	2.216	0.4933
81.0	4.453	3.799	2.177	0.3410	2.081	3.633	4.372	3.735	2.020	0.2468
84.0	4.268	3.613	2.006	0.1100	1.900	3.452	4.196	3.559	1.844	0.0558
87.0	4.077	3.432	1.845	0.0503	1.755	3.271	4.010	3.383	1.683	0.0252
90.0	3.881	3.251	1.704	0.0603	1.614	3.095	3.824	3.207	1.547	0.0101
93.0	3.690	3.080	1.583	0.0553	1.503	2.924	3.643	3.031	1.437	0.0101
96.0	3.499	2.914	1.483	0.0603	1.408	2.764	3.442	2.860	1.327	0.0101
99.0	3.263	2.512	1.397	0.0654	1.327	2.362	3.186	2.504	1.246	0.0101
102.0	3.081	2.397	1.277	0.0754	1.112	2.291	3.015	2.403	1.070	0.0101
105.0	2.911	2.296	1.161	0.0754	0.9450	2.196	2.854	2.297	0.9449	0.0101
108.0	2.755	2.196	1.131	0.0755	0.9275	2.080	2.698	2.112	0.9196	0.0101
111.0	2.599	2.080	1.054	0.0804	0.9099	1.889	2.452	2.021	0.8592	0.0101
114.0	2.458	1.980	1.034	0.0804	0.8696	1.754	2.306	1.915	0.8241	0.0101
117.0	2.327	1.894	1.010	0.0804	0.8195	1.658	2.176	1.810	0.7839	0.0150
120.0	2.202	1.804	0.9050	0.0854	0.7640	1.598	2.065	1.704	0.7588	0.0201
123.0	2.091	1.719	0.8446	0.0905	0.7389	1.533	1.959	1.604	0.7244	0.0301
126.0	1.976	1.643	0.7691	0.0905	0.7208	1.447	1.824	1.518	0.6884	0.0452
129.0	1.865	1.507	0.7139	0.0905	0.6937	1.357	1.688	1.418	0.6653	0.0502
132.0	1.754	1.321	0.6635	0.0955	0.6684	1.246	1.521	1.307	0.6532	0.0503
135.0	1.639	1.155	0.6183	0.1020	0.6384	1.091	1.341	1.126	0.6030	0.0553
138.0	1.543	0.9948	0.5781	0.1041	0.6232	1.0000	1.100	1.081	0.5931	0.0553
141.0	1.438	0.8892	0.5329	0.1066	0.5983	0.9547	1.020	1.005	0.5577	0.0553
144.0	1.327	0.7938	0.4877	0.1090	0.5681	0.8943	1.005	0.9701	0.5340	0.0553
147.0	1.232	0.7134	0.4625	0.1102	0.5430	0.8290	0.9496	0.9048	0.5231	0.0553
150.0	1.136	0.6230	0.4223	0.1107	0.5128	0.7538	0.8838	0.8244	0.5121	0.0553
153.0	1.036	0.5477	0.4162	0.1112	0.4776	0.6834	0.8208	0.7441	0.4471	0.0603
156.0	0.9203	0.5023	0.4102	0.1118	0.4375	0.6181	0.7688	0.6988	0.4118	0.0603
159.0	0.8244	0.4320	0.4043	0.1123	0.4071	0.5527	0.6834	0.6383	0.3667	0.0653
162.0	0.7343	0.3518	0.3989	0.1129	0.3721	0.5174	0.6380	0.5782	0.3215	0.0653
165.0	0.6386	0.3335	0.3921	0.1134	0.3368	0.4423	0.5173	0.5028	0.2914	0.0653
168.0	0.5369	0.3065	0.3569	0.1140	0.2817	0.3717	0.2772	0.4173	0.2411	0.0704
171.0	0.2967	0.2764	0.3268	0.1145	0.2364	0.3013	0.2366	0.3771	0.2209	0.0704
174.0	0.2465	0.2361	0.2917	0.1150	0.2163	0.2060	0.1959	0.3068	0.1909	0.0704
177.0	0.2112	0.1956	0.2165	0.1156	0.1463	0.1656	0.1557	0.2565	0.1206	0.0704
180.0	0.1357	0.1307	0.1256	0.1156	0.1156	0.1106	0.1357	0.1307	0.1156	0.0754
G/C	300.0	330.0								
0.0	7.297	7.292								
3.0	7.297	7.297								
6.0	7.267	7.293								
9.0	7.202	7.289								
12.0	7.111	7.247								
15.0	6.990	7.177								
18.0	6.854	7.077								
21.0	6.684	6.971								
24.0	6.513	6.875								
27.0	6.307	6.780								
30.0	6.101	6.690								

C Range: 0 - 360DEG
 C Interval: 30.0DEG
 Test Speed: HIGH
 Temperature: 25.3DEG
 Operators: LPC
 Test Date: 2021-12-15

γ Range: 0 - 180DEG
 γ Interval: 1.0DEG
 Test System: EVERFINE GO-2000B_V1 SYSTEM V2.0.362
 Humidity: 65.0%
 Test Distance: 9.200m [K=1.0000]
 Remarks:

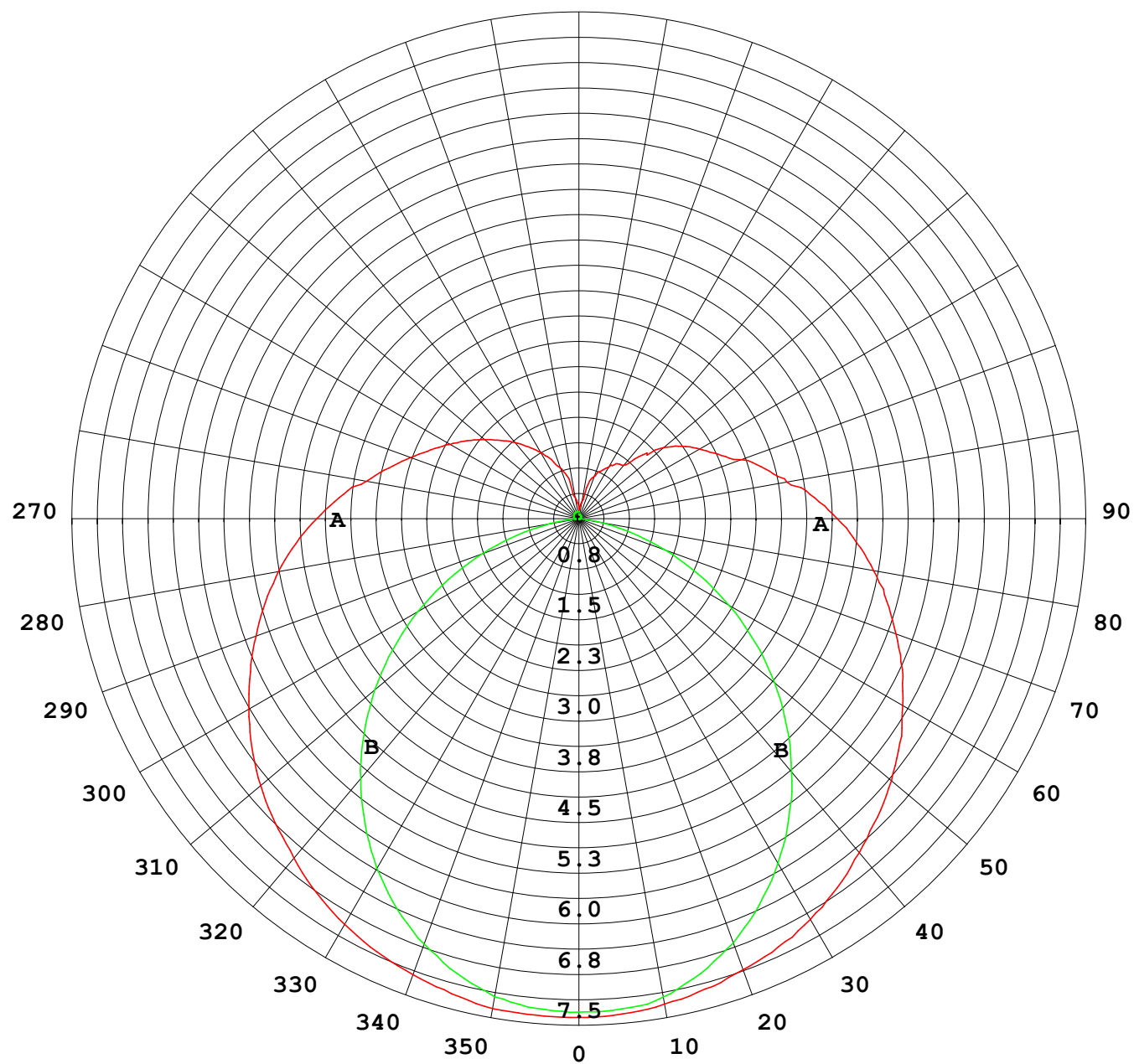
Photometric Data Table [cd]

33.0	5.904	6.569
36.0	5.688	6.438
39.0	5.482	6.288
42.0	5.266	6.132
45.0	5.045	5.966
48.0	4.804	5.795
51.0	4.552	5.639
54.0	4.291	5.484
57.0	4.040	5.313
60.0	3.773	5.127
63.0	3.502	4.946
66.0	3.261	4.750
69.0	3.024	4.564
72.0	2.773	4.383
75.0	2.537	4.207
78.0	2.316	4.036
81.0	2.120	3.860
84.0	1.944	3.685
87.0	1.779	3.504
90.0	1.638	3.323
93.0	1.517	3.152
96.0	1.412	2.981
99.0	1.332	2.815
102.0	1.240	2.648
105.0	1.096	2.382
108.0	1.081	2.272
111.0	1.044	2.151
114.0	0.9348	2.051
117.0	0.9188	1.955
120.0	0.8529	1.870
123.0	0.7889	1.784
126.0	0.7633	1.694
129.0	0.6834	1.578
132.0	0.6230	1.383
135.0	0.5677	1.237
138.0	0.5226	1.106
141.0	0.4773	0.9104
144.0	0.4361	0.8696
147.0	0.3969	0.7942
150.0	0.3762	0.7139
153.0	0.3676	0.6285
156.0	0.3644	0.5631
159.0	0.3611	0.4877
162.0	0.3575	0.4223
165.0	0.3529	0.4011
168.0	0.3065	0.3830
171.0	0.2864	0.3620
174.0	0.2461	0.3267
177.0	0.1804	0.2816
180.0	0.0905	0.1256

C Range: 0 - 360DEG
 C Interval: 30.0DEG
 Test Speed: HIGH
 Temperature:25.3DEG
 Operators:LPC
 Test Date:2021-12-15

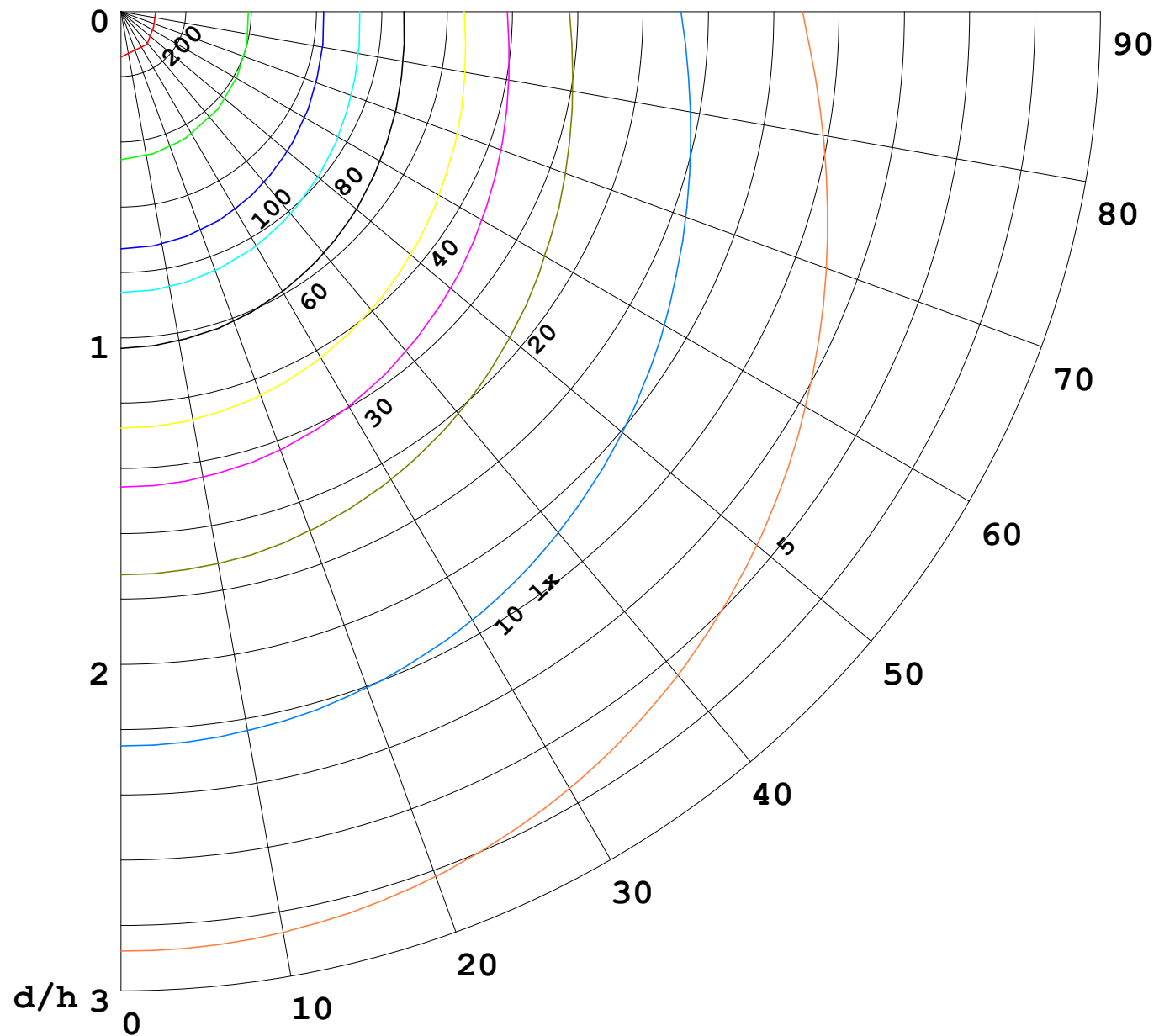
γ Range: 0 - 180DEG
 γ Interval: 1.0DEG
 Test System:EVERFINE GO-2000B_V1 SYSTEM V2.0.362
 Humidity:65.0%
 Test Distance:9.200m [K=1.0000]
 Remarks:

I (cd)



1000 lm

$\kappa = 1$



F = 5000 lm
 K = 0.7
 Hcc = 0.0 m
 Hfc = 0.0 m
 Eave = 100 lx

	Pcc	Pw	Pfc
—	70	50	30
—	50	30	20

