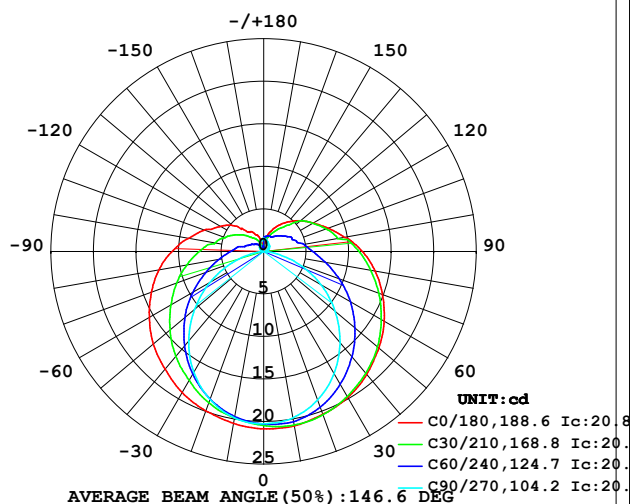


## LUMINAIRE PHOTOMETRIC TEST REPORT

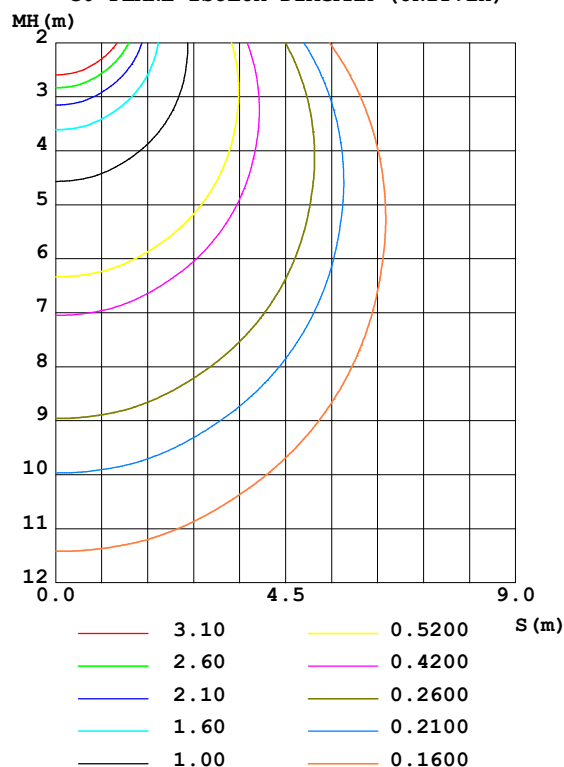
Test:U:24.00V I:0.2121A P:5.090W PF:1.000 Freq:50.00Hz Lamp Flux:103.008x1 lm		
NAME: SF21-24V-5050-56-DMX3-RGB-B	TYPE: 硅胶	WEIGHT:
SPEC.:	DIM.: 28mm*11.5mm	SERIAL No.:2021121503
MFR.: OLYMPIA	SUR.:1*0.016	Shielding Angle:

DATA OF LAMP		PHOTOMETRIC DATA Eff: 20.24 lm/W			
MODEL	5050	I <sub>max</sub> (cd)	20.87	S/MH (C0/180)	1.38
NOMINAL POWER (W)	4	LOR (%)	100.0	S/MH (C90/270)	1.21
RATED VOLTAGE (V)	24	TOTAL FLUX (lm)	103.01	η UP, DN (C0-180)	11.7, 38.7
NOMINAL FLUX (lm)	103.008	CIE CLASS	SEMI-D.	η UP, DN (C180-360)	11.3, 38.3
LAMPS INSIDE	1	η up (%)	23.0	CIBSE SHR NOM	1.50
TEST VOLTAGE (V)	24	η down (%)	77.0	CIBSE SHR MAX	1.55

LUMINOUS INTENSITY DISTRIBUTION DIAGRAM



C0 PLANE ISOLUX DIAGRAM (UNIT: lx)



C Range: 0 - 360DEG  
C Interval: 30.0DEG  
Test Speed: HIGH  
Temperature: 25.3DEG  
Operators: LPC  
Test Date: 2021-12-15

γ Range: 0 - 180DEG  
γ Interval: 1.0DEG  
Test System: EVERFINE GO-2000B\_V1 SYSTEM V2.0.362  
Humidity: 65.0%  
Test Distance: 9.200m [K=1.0000]  
Remarks:

## ZONAL FLUX DIAGRAM

ZONAL FLUX DIAGRAM:

$\gamma$	C0	C45	C90	C135	C180	C225	C270	C315	$\gamma$	$\Phi$ zone	$\Phi$ total	%lum, lamp
10	20.83	20.52	19.85	19.71	20.51	19.78	19.86	20.38	0- 10	1.936	1.936	1.88,1.88
20	20.36	19.95	18.56	18.61	19.93	18.69	18.52	19.85	10- 20	5.591	7.527	7.31,7.31
30	19.80	18.84	16.57	17.02	19.17	17.09	16.43	18.80	20- 30	8.618	16.15	15.7,15.7
40	18.85	17.42	13.98	15.20	18.04	15.28	13.73	17.45	30- 40	10.75	26.89	26.1,26.1
50	17.68	15.73	10.98	13.17	16.94	13.24	10.61	15.81	40- 50	11.85	38.74	37.6,37.6
60	16.36	13.86	7.767	11.04	15.53	11.11	7.315	13.95	50- 60	11.92	50.66	49.2,49.2
70	14.87	11.93	4.410	9.001	14.06	9.061	3.968	12.01	60- 70	11.08	61.73	59.9,59.9
80	13.30	10.06	1.405	7.202	12.50	7.247	1.107	10.15	70- 80	9.620	71.35	69.3,69.3
90	11.61	8.491	0.3201	5.719	10.78	5.739	0.1783	8.574	80- 90	8.003	79.35	77,77
100	9.654	6.820	0.3118	4.357	8.934	4.468	0.1898	6.951	90-100	6.636	85.99	83.5,83.5
110	8.053	5.853	0.4675	3.349	7.406	3.465	0.2360	5.988	100-110	5.172	91.16	88.5,88.5
120	6.726	5.099	0.6384	2.674	5.904	2.807	0.4370	5.081	110-120	4.060	95.22	92.4,92.4
130	5.630	4.239	0.7842	2.116	4.773	2.186	0.6130	4.225	120-130	3.088	98.31	95.4,95.4
140	4.575	3.123	0.9148	1.611	2.994	1.589	0.7589	3.066	130-140	2.116	100.4	97.5,97.5
150	3.564	2.412	1.071	1.136	2.618	1.166	0.9547	2.329	140-150	1.318	101.7	98.8,98.8
160	2.539	1.962	1.277	0.7342	1.944	0.7612	1.221	1.929	150-160	0.7790	102.5	99.5,99.5
170	1.106	1.745	1.458	0.6004	0.8392	0.4991	1.422	1.743	160-170	0.3771	102.9	99.9,99.9
180	0.4825	0.9775	1.508	1.452	0.4774	1.003	1.583	1.490	170-180	0.1071	103.0	100,100
DEG	LUMINOUS INTENSITY:cd									UNIT:lm		

Conical surface Flux(90deg): 32.744 lm

%lum = 31.8%

%lamp = 31.8%

Conical surface Flux(120deg): 50.656 lm

%lum = 49.2%

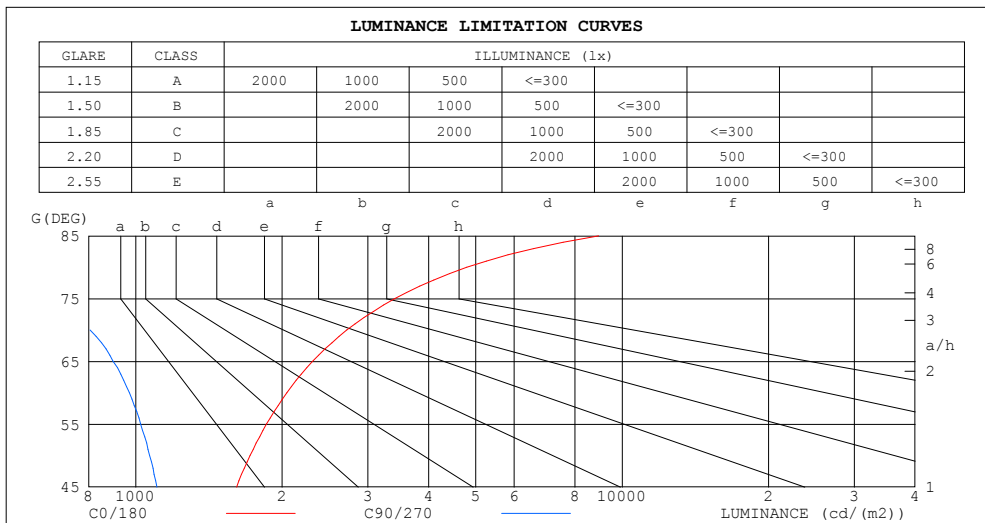
%lamp = 49.2%

C Range: 0 - 360DEG  
 C Interval: 30.0DEG  
 Test Speed: HIGH  
 Temperature:25.3DEG  
 Operators:LPC  
 Test Date:2021-12-15

$\gamma$  Range: 0 - 180DEG  
 $\gamma$  Interval: 1.0DEG  
 Test System:EVERFINE GO-2000B\_V1 SYSTEM V2.0.362  
 Humidity:65.0%  
 Test Distance:9.200m [K=1.0000]  
 Remarks:

## LUMINANCE LIMITATION CURVES

Test:U:24.00V I:0.2121A P:5.090W PF:1.000 Freq:50.00Hz Lamp Flux:103.008x1 lm		
NAME: SF21-24V-5050-56-DMX3-RGB-B	TYPE: 硅胶	WEIGHT:
SPEC.:	DIM.: 28mm*11.5mm	SERIAL No.:2021121503
MFR.: OLYMPIA	SUR.:1*0.016	Shielding Angle:



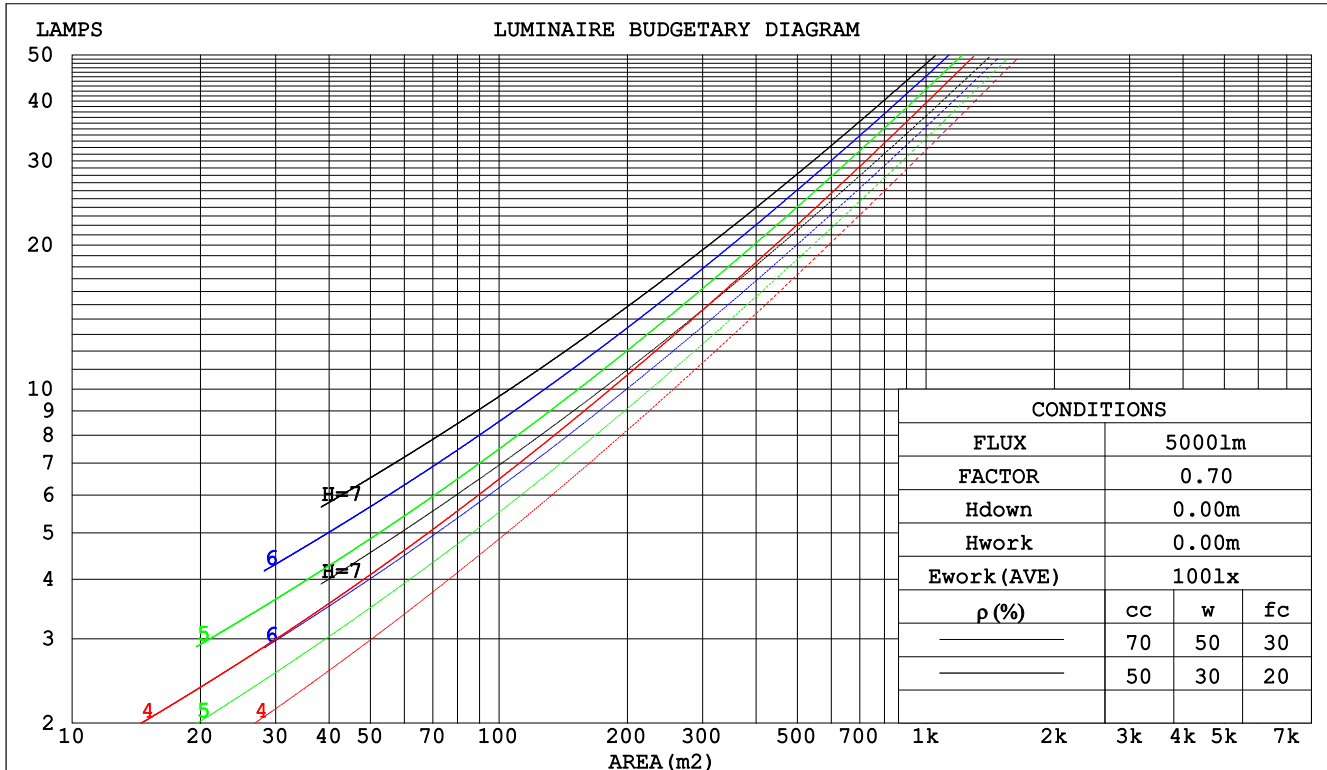
C Range: 0 - 360DEG  
C Interval: 30.0DEG  
Test Speed: HIGH  
Temperature:25.3DEG  
Operators:LPC  
Test Date:2021-12-15

$\gamma$  Range: 0 - 180DEG  
 $\gamma$  Interval: 1.0DEG  
Test System:EVERFINE GO-2000B\_V1 SYSTEM V2.0.362  
Humidity:65.0%  
Test Distance:9.200m [K=1.0000]  
Remarks:

## CU AND LUMINAIRE BUDGETARY ESTIMATE DIAGRAM

Test:U:24.00V I:0.2121A P:5.090W PF:1.000 Freq:50.00Hz Lamp Flux:103.008x1 lm		
NAME: SF21-24V-5050-56-DMX3-RGB-B	TYPE: 硅胶	WEIGHT:
SPEC.:	DIM.: 28mm*11.5mm	SERIAL No.:2021121503
MFR.: OLYMPIA	SUR.:1*0.016	Shielding Angle:

pcc	80%			70%			50%			30%			10%			0
pw	50%	30%	10%	50%	30%	10%	50%	30%	10%	50%	30%	10%	50%	30%	10%	0
pfc	20%			20%			20%			20%			20%			0
RCR	RCR:Room Cavity Ratio						Coefficients of Utilization(CU)									
0.0	1.14	1.14	1.14	1.08	1.08	1.08	.98	.98	.98	.89	.89	.89	.81	.81	.81	.77
1.0	.94	.89	.84	.90	.85	.81	.81	.77	.74	.73	.70	.67	.66	.64	.61	.58
2.0	.81	.73	.66	.77	.70	.64	.69	.64	.59	.62	.58	.54	.56	.53	.49	.46
3.0	.70	.61	.54	.66	.58	.52	.60	.53	.48	.54	.49	.44	.49	.44	.41	.37
4.0	.61	.52	.45	.58	.50	.43	.53	.46	.40	.48	.42	.37	.43	.38	.34	.31
5.0	.54	.45	.38	.52	.43	.37	.47	.40	.34	.43	.36	.32	.39	.33	.29	.26
6.0	.49	.39	.33	.46	.38	.32	.42	.35	.29	.38	.32	.27	.35	.30	.25	.23
7.0	.44	.35	.28	.42	.34	.28	.38	.31	.26	.35	.29	.24	.32	.26	.22	.20
8.0	.40	.31	.25	.38	.30	.24	.35	.28	.23	.32	.26	.21	.29	.24	.20	.18
9.0	.36	.28	.22	.35	.27	.22	.32	.25	.20	.29	.23	.19	.27	.22	.18	.16
10.0	.33	.25	.20	.32	.25	.20	.29	.23	.18	.27	.21	.17	.25	.20	.16	.14



C Range: 0 - 360DEG  
 C Interval: 30.0DEG  
 Test Speed: HIGH  
 Temperature:25.3DEG  
 Operators:LPC  
 Test Date:2021-12-15

γ Range: 0 - 180DEG  
 γ Interval: 1.0DEG  
 Test System:EVERFINE GO-2000B\_V1 SYSTEM V2.0.362  
 Humidity:65.0%  
 Test Distance:9.200m [K=1.0000]  
 Remarks:

## WEC AND CCEC

Test:U:24.00V I:0.2121A P:5.090W PF:1.000 Freq:50.00Hz Lamp Flux:103.008x1 lm		
NAME: SF21-24V-5050-56-DMX3-RGB-B	TYPE: 硅胶	WEIGHT:
SPEC.:	DIM.: 28mm*11.5mm	SERIAL No.:2021121503
MFR.: OLYMPIA	SUR.:1*0.016	Shielding Angle:

pcc	80%			70%			50%			30%			10%			0	
pw	50%	30%	10%	50%	30%	10%	50%	30%	10%	50%	30%	10%	50%	30%	10%	0	
pfc	20%			20%			20%			20%			20%			0	
RCR	RCR:Room Cavity Ratio						Wall Exitance Coeffcients (WEC)										
0.0																	
1.0	.388	.220	.070	.373	.213	.068	.347	.199	.064	.322	.186	.060	.300	.174	.056		
2.0	.333	.183	.056	.321	.177	.054	.296	.165	.051	.274	.154	.048	.254	.143	.045		
3.0	.295	.157	.047	.284	.152	.046	.262	.142	.043	.242	.132	.041	.223	.123	.038		
4.0	.266	.138	.041	.255	.133	.039	.235	.125	.037	.217	.116	.035	.199	.108	.033		
5.0	.241	.123	.036	.232	.119	.035	.213	.111	.033	.197	.104	.031	.181	.097	.029		
6.0	.221	.111	.032	.212	.107	.031	.195	.100	.029	.180	.094	.027	.165	.087	.026		
7.0	.204	.101	.029	.196	.097	.028	.180	.091	.026	.166	.085	.025	.153	.079	.023		
8.0	.189	.092	.026	.181	.089	.025	.167	.084	.024	.154	.078	.023	.142	.073	.021		
9.0	.176	.085	.024	.169	.082	.023	.156	.077	.022	.144	.072	.021	.132	.067	.019		
10.0	.165	.079	.022	.158	.076	.021	.146	.072	.020	.135	.067	.019	.124	.062	.018		

pcc	80%			70%			50%			30%			10%			0	
pw	50%	30%	10%	50%	30%	10%	50%	30%	10%	50%	30%	10%	50%	30%	10%	0	
pfc	20%			20%			20%			20%			20%			0	
RCR	RCR:Room Cavity Ratio						Ceiling Cavity Exitance Coefficients(CCEC)										
0.0	.365	.365	.365	.312	.312	.312	.213	.213	.213	.122	.122	.122	.039	.039	.039		
1.0	.362	.332	.305	.310	.285	.262	.212	.196	.181	.122	.113	.105	.039	.036	.034		
2.0	.355	.309	.271	.304	.266	.234	.209	.184	.163	.120	.107	.096	.039	.035	.031		
3.0	.348	.293	.249	.298	.253	.216	.205	.176	.152	.118	.103	.089	.038	.033	.029		
4.0	.340	.281	.235	.292	.243	.204	.201	.169	.144	.116	.099	.085	.037	.032	.028		
5.0	.333	.271	.226	.286	.234	.196	.197	.164	.139	.114	.096	.082	.037	.031	.027		
6.0	.325	.263	.219	.279	.228	.190	.193	.160	.135	.112	.094	.080	.036	.031	.026		
7.0	.318	.257	.213	.274	.222	.186	.189	.156	.132	.110	.092	.078	.035	.030	.026		
8.0	.311	.251	.210	.268	.218	.183	.186	.153	.130	.108	.090	.077	.035	.030	.026		
9.0	.305	.246	.207	.263	.214	.180	.182	.150	.128	.106	.089	.076	.034	.029	.025		
10.0	.299	.242	.204	.258	.210	.178	.179	.148	.127	.104	.088	.076	.034	.029	.025		

C Range: 0 - 360DEG  
 C Interval: 30.0DEG  
 Test Speed: HIGH  
 Temperature:25.3DEG  
 Operators:LPC  
 Test Date:2021-12-15

γ Range: 0 - 180DEG  
 γ Interval: 1.0DEG  
 Test System:EVERFINE GO-2000B\_V1 SYSTEM V2.0.362  
 Humidity:65.0%  
 Test Distance:9.200m [K=1.0000]  
 Remarks:

### UGR(Unified Glare Rating) Table

Test:U:24.00V I:0.2121A P:5.090W PF:1.000 Freq:50.00Hz Lamp Flux:103.008x1 lm										
NAME: SF21-24V-5050-56-DMX3-RGB-B					TYPE: 硅胶			WEIGHT:		
SPEC.:					DIM.: 28mm*11.5mm			SERIAL No.:2021121503		
MFR.: OLYMPIA					SUR.:1*0.016			Shielding Angle:		
ceiling/cavity	0.7	0.7	0.5	0.5	0.3	0.7	0.7	0.5	0.5	0.3
walls	0.5	0.3	0.5	0.3	0.3	0.5	0.3	0.5	0.3	0.3
working plane	0.2	0.2	0.2	0.2	0.2	0.2	0.2	0.2	0.2	0.2
Room dimensions	Viewed crosswise					Viewed endwise				
x = 2H y = 2H	22.3	23.7	22.9	24.2	24.9	19.6	20.9	20.2	21.5	22.2
3H	25.1	26.4	25.7	27.0	27.7	21.1	22.3	21.7	22.9	23.6
4H	26.7	27.9	27.3	28.5	29.2	21.6	22.8	22.2	23.4	24.1
6H	28.4	29.5	29.1	30.2	30.9	22.0	23.0	22.6	23.7	24.4
8H	29.4	30.5	30.1	31.1	31.9	22.0	23.1	22.7	23.7	24.5
12H	30.5	31.5	31.2	32.2	33.0	22.1	23.1	22.7	23.7	24.5
4H 2H	23.0	24.1	23.6	24.7	25.4	21.1	22.2	21.7	22.8	23.5
3H	26.1	27.1	26.7	27.7	28.5	22.8	23.9	23.5	24.5	25.3
4H	27.8	28.7	28.5	29.4	30.2	23.7	24.6	24.3	25.3	26.1
6H	29.8	30.6	30.5	31.3	32.1	24.3	25.1	25.0	25.8	26.6
8H	30.8	31.6	31.6	32.3	33.2	24.5	25.3	25.2	26.0	26.8
12H	32.1	32.8	32.8	33.5	34.4	24.6	25.3	25.3	26.1	26.9
8H 4H	28.2	29.0	28.9	29.7	30.6	25.1	25.8	25.8	26.6	27.4
6H	30.5	31.2	31.3	31.9	32.8	26.2	26.8	26.9	27.6	28.5
8H	31.8	32.4	32.6	33.2	34.1	26.6	27.2	27.4	28.0	28.9
12H	33.3	33.8	34.1	34.6	35.5	27.0	27.5	27.8	28.3	29.3
12H 4H	28.2	28.9	29.0	29.7	30.6	25.5	26.2	26.3	27.0	27.9
6H	30.6	31.2	31.4	32.0	32.9	26.9	27.5	27.7	28.3	29.2
8H	32.1	32.6	32.9	33.4	34.3	27.6	28.1	28.4	28.9	29.9
Variations with the observer position at spacings:										
S = 1.0H	+ 0.1 / - 0.1					+ 0.1 / - 0.1				
1.5H	+ 0.2 / - 0.3					+ 0.2 / - 0.3				
2.0H	+ 0.3 / - 0.4					+ 0.3 / - 0.4				

CIE Pub.117, 103.0 lm Total Lamp Luminous Flux Correct (8log(F/F0) = -7.9)

C Range: 0 - 360DEG  
C Interval: 30.0DEG  
Test Speed: HIGH  
Temperature:25.3DEG  
Operators:LPC  
Test Date:2021-12-15

γ Range: 0 - 180DEG  
γ Interval: 1.0DEG  
Test System:EVERFINE GO-2000B\_V1 SYSTEM V2.0.362  
Humidity:65.0%  
Test Distance:9.200m [K=1.0000]  
Remarks:

## UTILIZATION FACTORS TABLE

Test:U:24.00V I:0.2121A P:5.090W PF:1.000 Freq:50.00Hz Lamp Flux:103.008x1 lm		
NAME: SF21-24V-5050-56-DMX3-RGB-B	TYPE: 硅胶	WEIGHT:
SPEC.:	DIM.: 28mm*11.5mm	SERIAL No.:2021121503
MFR.: OLYMPIA	SUR.:1*0.016	Shielding Angle:

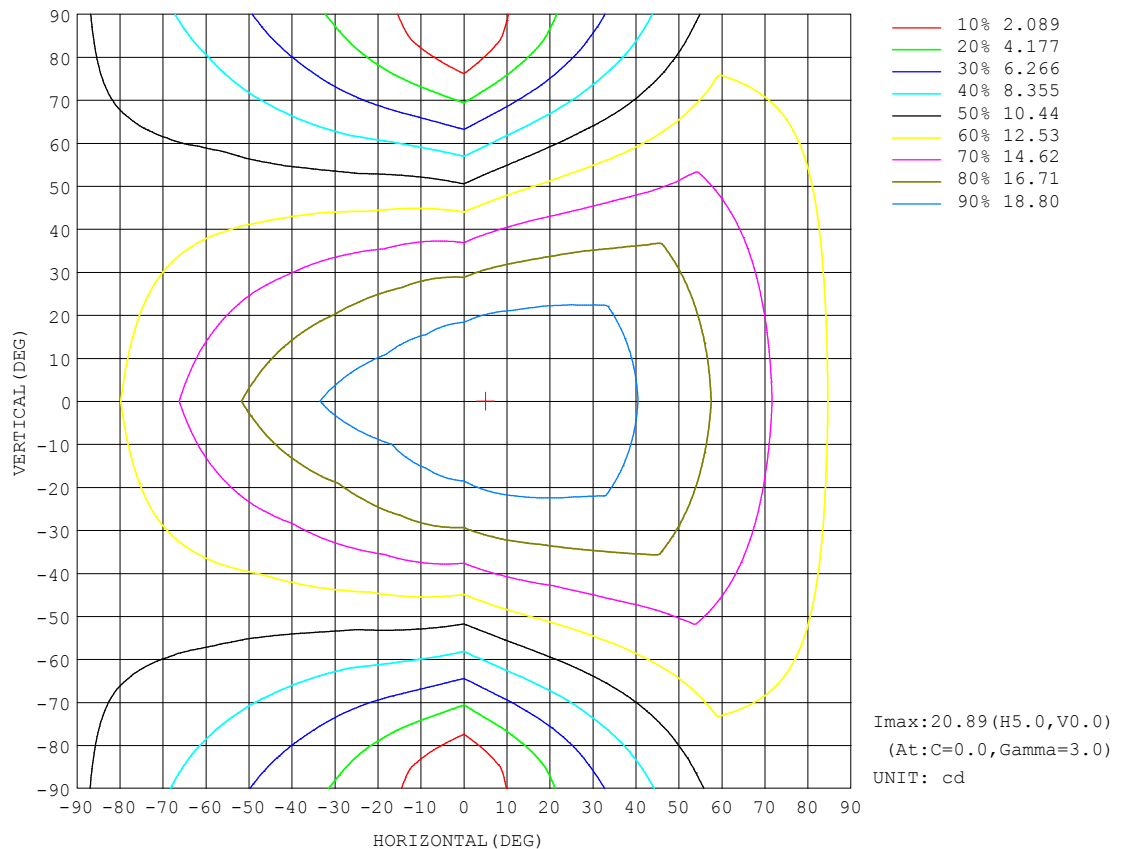
REFLECTANCE										
Ceiling	0.8	0.8	0.8	0.7	0.7	0.7	0.5	0.5	0.5	0
Walls	0.7	0.5	0.3	0.7	0.5	0.3	0.7	0.5	0.3	0
Working plane	0.2	0.2	0.2	0.2	0.2	0.2	0.2	0.2	0.2	0
ROOM INDEX	UTILIZATION FACTORS (PERCENT) $k(RI) \times RCR = 5$									
$k = 0.60$	46	34	26	45	33	26	43	32	26	19
0.80	55	42	34	53	41	34	50	40	33	24
1.00	63	50	41	61	48	41	57	49	39	30
1.25	70	57	48	67	55	47	62	52	45	35
1.50	75	62	54	72	61	52	66	57	50	39
2.00	82	71	62	79	68	61	72	64	57	45
2.50	87	76	68	83	73	66	76	68	62	48
3.00	90	81	73	86	78	71	79	72	66	52
4.00	95	87	80	91	84	77	83	77	72	56
5.00	98	91	85	94	87	82	85	80	76	59
ROOM INDEX	UF (total)									Direct
According to DIN EN 13032-2 2004			Suspended					SHRNOM = 1.25		

C Range: 0 - 360DEG  
 C Interval: 30.0DEG  
 Test Speed: HIGH  
 Temperature:25.3DEG  
 Operators:LPC  
 Test Date:2021-12-15

$\gamma$  Range: 0 - 180DEG  
 $\gamma$  Interval: 1.0DEG  
 Test System:EVERFINE GO-2000B\_V1 SYSTEM V2.0.362  
 Humidity:65.0%  
 Test Distance:9.200m [K=1.0000]  
 Remarks:

## ISOCANDELA DIAGRAM

Test:U:24.00V I:0.2121A P:5.090W PF:1.000 Freq:50.00Hz Lamp Flux:103.008x1 lm		
NAME: SF21-24V-5050-56-DMX3-RGB-B	TYPE: 硅胶	WEIGHT:
SPEC.:	DIM.: 28mm*11.5mm	SERIAL No.:2021121503
MFR.: OLYMPIA	SUR.:1*0.016	Shielding Angle:



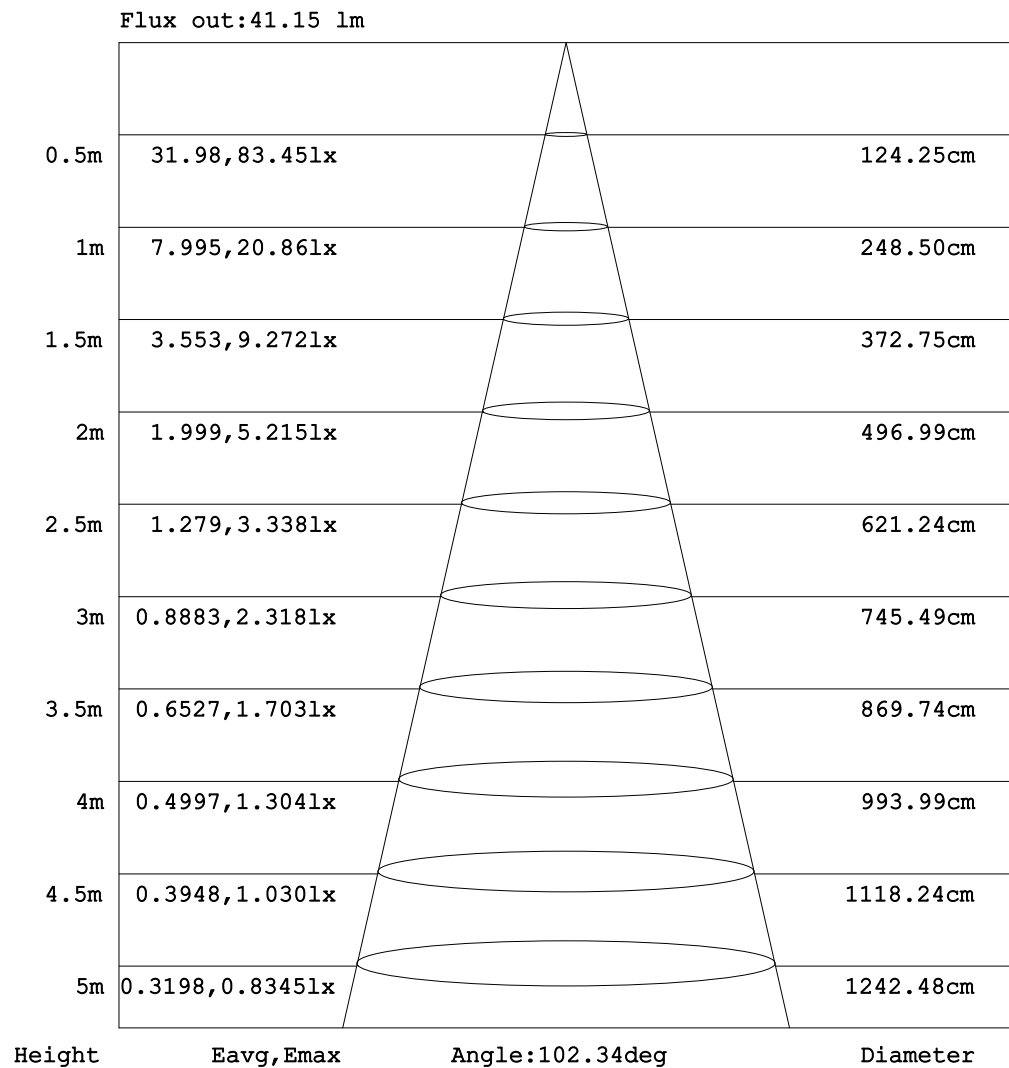
C Range: 0 - 360DEG  
C Interval: 30.0DEG  
Test Speed: HIGH  
Temperature:25.3DEG  
Operators:LPC  
Test Date:2021-12-15

$\gamma$  Range: 0 - 180DEG  
 $\gamma$  Interval: 1.0DEG  
Test System:EVERFINE GO-2000B\_V1 SYSTEM V2.0.362  
Humidity:65.0%  
Test Distance:9.200m [K=1.0000]  
Remarks:



## AAI Figure

Test:U:24.00V I:0.2121A P:5.090W PF:1.000 Freq:50.00Hz Lamp Flux:103.008x1 lm		
NAME: SF21-24V-5050-56-DMX3-RGB-B	TYPE: 硅胶	WEIGHT:
SPEC.:	DIM.: 28mm*11.5mm	SERIAL No.:2021121503
MFR.: OLYMPIA	SUR.:1*0.016	Shielding Angle:



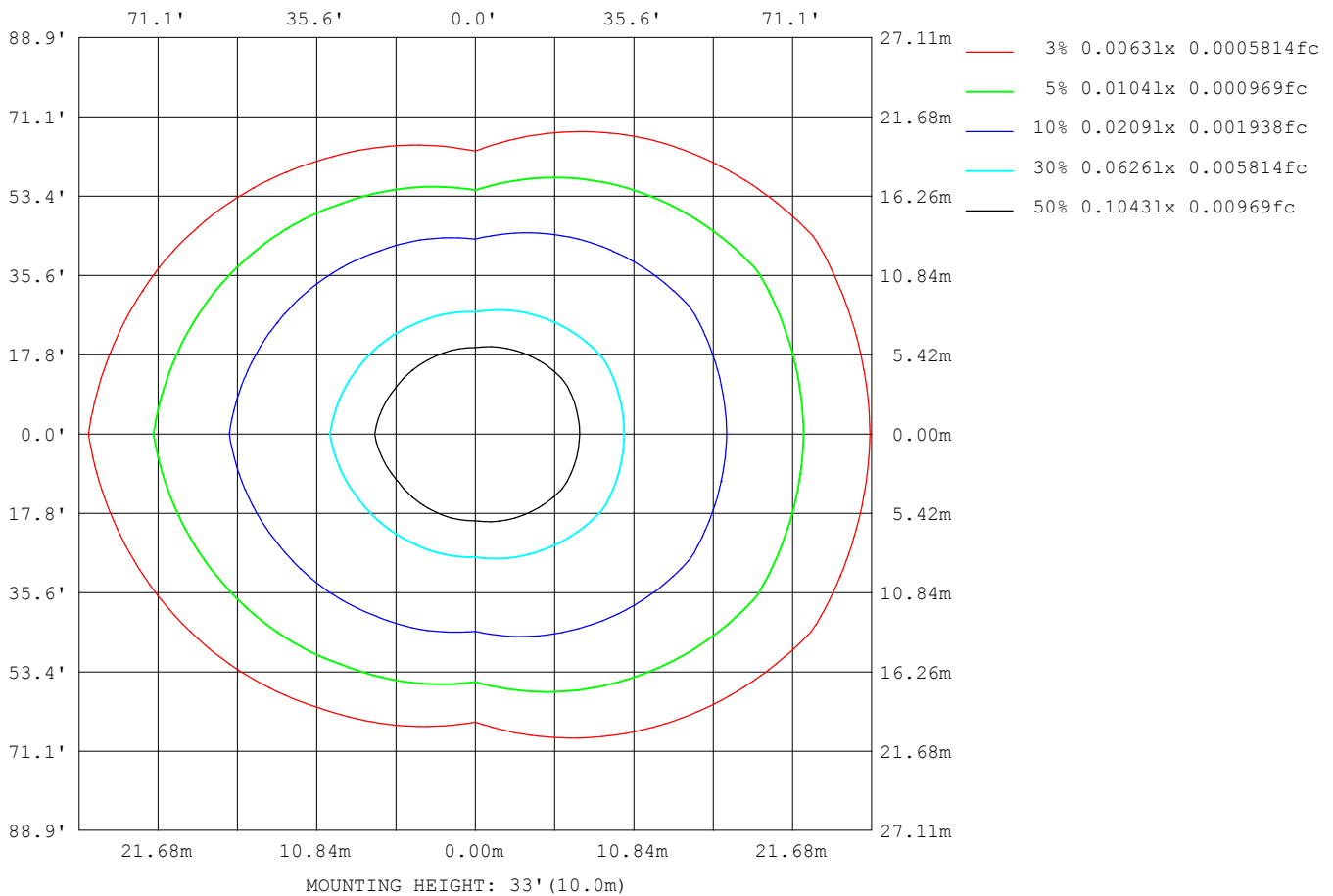
Note: The Curves indicate the illuminated area and the average illumination when the luminaire is at different distance.

C Range: 0 - 360DEG  
 C Interval: 30.0DEG  
 Test Speed: HIGH  
 Temperature: 25.3DEG  
 Operators: LPC  
 Test Date: 2021-12-15

γ Range: 0 - 180DEG  
 γ Interval: 1.0DEG  
 Test System: EVERFINE GO-2000B\_V1 SYSTEM V2.0.362  
 Humidity: 65.0%  
 Test Distance: 9.200m [K=1.0000]  
 Remarks:

## ISOLUX DIAGRAM

Test:U:24.00V I:0.2121A P:5.090W PF:1.000 Freq:50.00Hz Lamp Flux:103.008x1 lm		
NAME: SF21-24V-5050-56-DMX3-RGB-B	TYPE: 硅胶	WEIGHT:
SPEC.:	DIM.: 28mm*11.5mm	SERIAL No.:2021121503
MFR.: OLYMPIA	SUR.:1*0.016	Shielding Angle:



C Range: 0 - 360DEG  
C Interval: 30.0DEG  
Test Speed: HIGH  
Temperature:25.3DEG  
Operators:LPC  
Test Date:2021-12-15

$\gamma$  Range: 0 - 180DEG  
 $\gamma$  Interval: 1.0DEG  
Test System:EVERFINE GO-2000B\_V1 SYSTEM V2.0.362  
Humidity:65.0%  
Test Distance:9.200m [K=1.0000]  
Remarks:

## LED Avg.L Report

Test:U:24.00V I:0.2121A P:5.090W PF:1.000 Freq:50.00Hz Lamp Flux:103.008x1 lm		
NAME: SF21-24V-5050-56-DMX3-RGB-B	TYPE:硅胶	WEIGHT:
SPEC.:	DIM.: 28mm*11.5mm	SERIAL No.:2021121503
MFR.: OLYMPIA	SUR.:1*0.016	Shielding Angle:

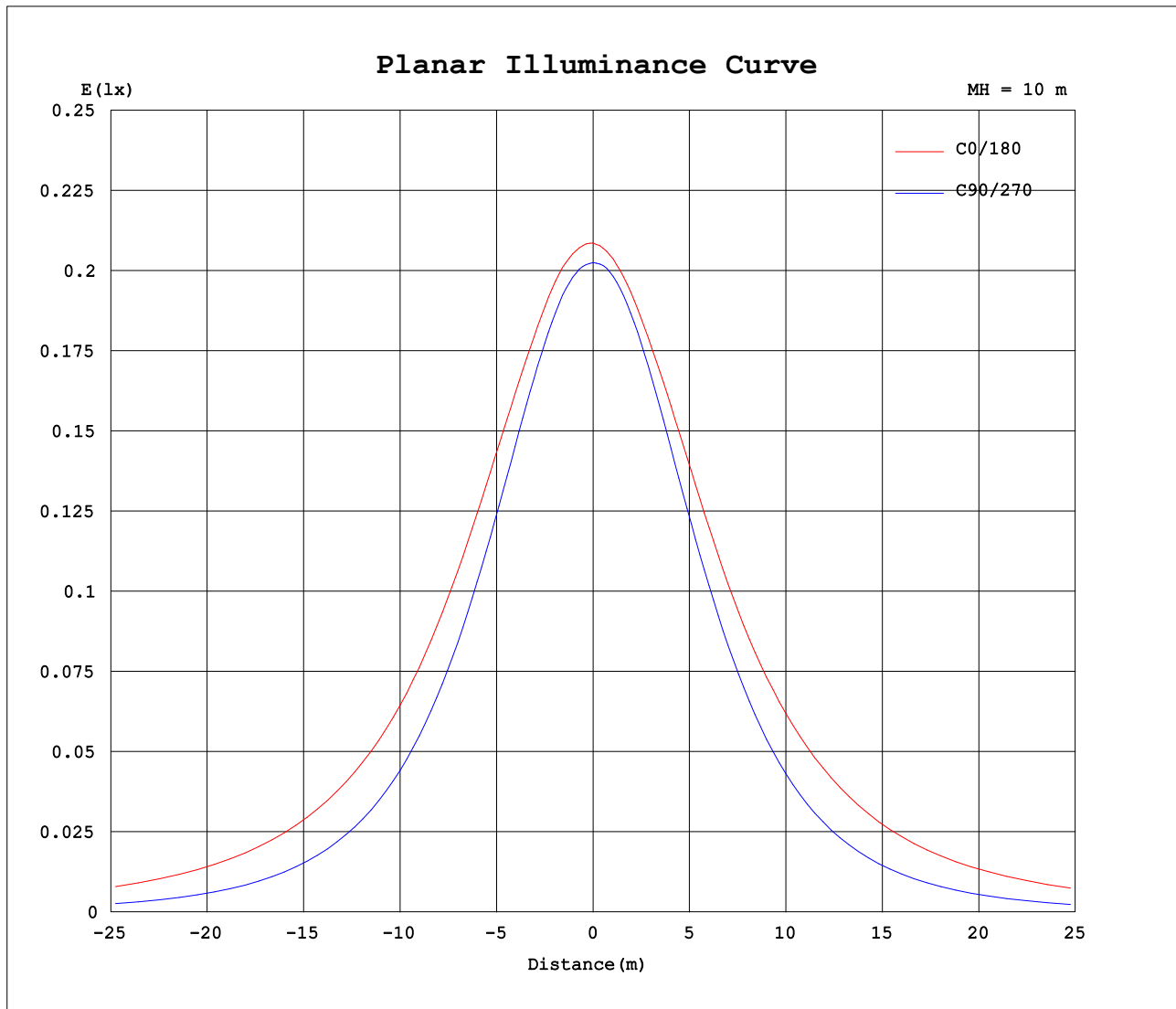
AvgL	cd/m2
L_0~180 (65) av	2249
L_0~180 (75) av	3308
L_0~180 (85) av	8660
L_90~270 (65) av	867
L_90~270 (75) av	633
L_90~270 (85) av	222
L_45 (65) av	1716
L_45 (75) av	2350
L_45 (85) av	5775

Standard: GB/T 29293-2012

C Range: 0 - 360DEG  
C Interval: 30.0DEG  
Test Speed: HIGH  
Temperature:25.3DEG  
Operators:LPC  
Test Date:2021-12-15

γ Range: 0 - 180DEG  
γ Interval: 1.0DEG  
Test System:EVERFINE GO-2000B\_V1 SYSTEM V2.0.362  
Humidity:65.0%  
Test Distance:9.200m [K=1.0000]  
Remarks:

## Planar Illuminance Curve



C Range: 0 - 360DEG  
C Interval: 30.0DEG  
Test Speed: HIGH  
Temperature: 25.3DEG  
Operators: LPC  
Test Date: 2021-12-15

$\gamma$  Range: 0 - 180DEG  
 $\gamma$  Interval: 1.0DEG  
Test System: EVERFINE GO-2000B\_V1 SYSTEM V2.0.362  
Humidity: 65.0%  
Test Distance: 9.200m [K=1.0000]  
Remarks:

## LUMINOUS DISTRIBUTION INTENSITY DATA

Test:U:24.00V I:0.2121A P:5.090W PF:1.000 Freq:50.00Hz Lamp Flux:103.008x1 lm		
NAME: SF21-24V-5050-56-DMX3-RGB-B	TYPE: 硅胶	WEIGHT:
SPEC.:	DIM.: 28mm*11.5mm	SERIAL No.:2021121503
MFR.: OLYMPIA	SUR.:1*0.016	Shielding Angle:

Table--1

UNIT: cd

C (DEG) γ (DEG)	0	30	60	90	120	150	180	210	240	270	300	330						
0	20.9	20.5	20.3	20.2	20.3	20.3	20.9	20.5	20.3	20.2	20.3	20.3						
5	20.9	20.7	20.4	20.2	20.1	20.0	20.7	20.2	20.1	20.2	20.3	20.5						
10	20.8	20.7	20.3	19.9	19.7	19.7	20.5	19.9	19.7	19.9	20.2	20.6						
15	20.6	20.6	20.0	19.3	19.2	19.3	20.2	19.5	19.2	19.3	19.9	20.6						
20	20.4	20.4	19.5	18.6	18.5	18.7	19.9	18.9	18.5	18.5	19.3	20.4						
25	20.1	20.1	18.8	17.6	17.7	18.0	19.6	18.3	17.6	17.5	18.7	20.1						
30	19.8	19.7	18.0	16.6	16.7	17.3	19.2	17.5	16.7	16.4	17.9	19.7						
35	19.4	19.2	17.1	15.3	15.7	16.6	18.6	16.8	15.6	15.1	17.1	19.2						
40	18.9	18.7	16.1	14.0	14.5	15.9	18.0	16.1	14.5	13.7	16.2	18.7						
45	18.2	18.1	15.1	12.5	13.4	15.0	17.5	15.3	13.3	12.2	15.2	18.2						
50	17.7	17.5	14.0	11.0	12.2	14.2	16.9	14.4	12.1	10.6	14.0	17.6						
55	17.0	16.7	12.9	9.40	10.9	13.3	16.3	13.5	10.9	8.97	12.9	16.9						
60	16.4	16.0	11.8	7.77	9.68	12.4	15.5	12.6	9.64	7.31	11.8	16.1						
65	15.6	15.2	10.6	6.08	8.45	11.5	14.8	11.7	8.40	5.64	10.6	15.3						
70	14.9	14.4	9.45	4.41	7.30	10.7	14.1	10.9	7.23	3.97	9.46	14.6						
75	14.1	13.6	8.36	2.83	6.29	9.85	13.3	10.0	6.21	2.41	8.34	13.8						
80	13.3	12.8	7.35	1.41	5.40	9.00	12.5	9.19	5.31	1.11	7.33	13.0						
85	12.5	12.0	6.48	0.38	4.62	8.19	11.7	8.36	4.52	0.24	6.43	12.2						
90	11.6	11.2	5.78	0.32	4.01	7.43	10.8	7.59	3.89	0.18	5.73	11.4						
95	10.7	10.4	5.23	0.29	3.52	6.77	9.93	6.90	3.44	0.18	5.19	10.7						
100	9.65	8.83	4.81	0.31	3.10	5.62	8.93	5.83	3.11	0.19	4.76	9.14						
105	8.84	8.41	4.10	0.40	2.26	5.23	8.17	5.42	2.30	0.21	4.06	8.68						
110	8.05	7.81	3.89	0.47	2.12	4.58	7.41	4.83	2.10	0.24	3.91	8.06						
115	7.34	7.22	3.69	0.55	1.87	4.09	6.47	4.42	1.85	0.33	3.40	7.48						
120	6.73	6.67	3.52	0.64	1.67	3.67	5.90	3.92	1.69	0.44	3.28	6.88						
125	6.16	6.17	3.16	0.71	1.56	3.26	5.38	3.44	1.49	0.52	3.09	6.36						
130	5.63	5.62	2.86	0.78	1.42	2.81	4.77	3.01	1.36	0.61	2.71	5.74						
135	5.10	4.61	2.62	0.86	1.31	2.37	3.68	2.53	1.24	0.68	2.55	4.85						
140	4.57	3.85	2.39	0.91	1.16	2.06	2.99	2.08	1.10	0.76	2.22	3.91						
145	4.06	3.32	2.19	0.97	0.97	1.83	2.79	1.89	0.92	0.81	1.99	3.32						
150	3.56	2.83	1.99	1.07	0.74	1.53	2.62	1.63	0.70	0.95	1.79	2.86						
155	3.08	2.39	1.94	1.17	0.67	1.26	2.12	1.32	0.65	1.08	1.86	2.44						
160	2.54	1.99	1.93	1.28	0.59	0.87	1.94	0.96	0.56	1.22	1.89	1.97						
165	2.11	1.73	1.87	1.38	0.49	0.76	1.40	0.63	0.50	1.32	1.89	1.69						
170	1.11	1.66	1.83	1.46	0.48	0.72	0.84	0.52	0.48	1.42	1.78	1.70						
175	0.87	1.49	1.75	1.51	0.47	0.54	0.65	0.49	0.47	1.50	1.72	1.68						
180	0.48	0.47	1.48	1.51	1.52	1.39	0.48	0.75	1.25	1.58	1.58	1.40						

C Range: 0 - 360DEG  
C Interval: 30.0DEG  
Test Speed: HIGH  
Temperature:25.3DEG  
Operators:LPC  
Test Date:2021-12-15

γ Range: 0 - 180DEG  
γ Interval: 1.0DEG  
Test System:EVERFINE GO-2000B\_V1 SYSTEM V2.0.362  
Humidity:65.0%  
Test Distance:9.200m [K=1.0000]  
Remarks:

Photometric Data Table [cd]

G/C	0.0	30.0	60.0	90.0	120.0	150.0	180.0	210.0	240.0	270.0
0.0	20.86	20.47	20.29	20.25	20.29	20.28	20.86	20.47	20.29	20.25
3.0	20.87	20.60	20.35	20.21	20.17	20.12	20.79	20.30	20.18	20.24
6.0	20.86	20.70	20.37	20.12	20.02	19.94	20.70	20.12	20.01	20.14
9.0	20.86	20.71	20.35	19.96	19.81	19.75	20.55	19.93	19.79	19.95
12.0	20.76	20.70	20.20	19.65	19.52	19.54	20.39	19.71	19.51	19.65
15.0	20.62	20.64	19.98	19.31	19.17	19.28	20.21	19.47	19.16	19.29
18.0	20.46	20.54	19.69	18.89	18.78	18.97	20.04	19.16	18.76	18.85
21.0	20.32	20.37	19.36	18.40	18.33	18.60	19.87	18.80	18.30	18.34
24.0	20.18	20.17	18.95	17.84	17.83	18.18	19.67	18.41	17.79	17.75
27.0	20.01	19.94	18.51	17.23	17.30	17.74	19.44	17.98	17.25	17.12
30.0	19.80	19.67	18.01	16.57	16.73	17.31	19.17	17.52	16.67	16.43
33.0	19.57	19.37	17.49	15.84	16.10	16.92	18.85	17.10	16.05	15.68
36.0	19.28	19.08	16.93	15.06	15.45	16.50	18.50	16.70	15.40	14.87
39.0	18.97	18.79	16.35	14.26	14.76	16.04	18.15	16.24	14.71	14.02
42.0	18.62	18.46	15.73	13.41	14.05	15.56	17.85	15.76	14.00	13.13
45.0	18.24	18.12	15.10	12.51	13.35	15.05	17.52	15.26	13.29	12.21
48.0	17.90	17.73	14.45	11.62	12.64	14.52	17.17	14.73	12.59	11.26
51.0	17.56	17.33	13.78	10.68	11.92	13.99	16.80	14.19	11.87	10.28
54.0	17.17	16.90	13.11	9.707	11.20	13.46	16.40	13.67	11.14	9.310
57.0	16.78	16.43	12.45	8.757	10.44	12.92	15.97	13.13	10.40	8.320
60.0	16.36	15.95	11.77	7.767	9.682	12.40	15.53	12.59	9.636	7.315
63.0	15.91	15.49	11.07	6.766	8.939	11.88	15.10	12.07	8.887	6.326
66.0	15.47	15.05	10.38	5.757	8.215	11.38	14.65	11.58	8.154	5.300
69.0	15.02	14.57	9.687	4.756	7.521	10.86	14.21	11.05	7.456	4.280
72.0	14.57	14.08	9.004	3.767	6.878	10.36	13.75	10.55	6.803	3.345
75.0	14.11	13.59	8.360	2.827	6.295	9.854	13.29	10.04	6.210	2.415
78.0	13.63	13.09	7.747	1.933	5.741	9.327	12.82	9.510	5.657	1.585
81.0	13.15	12.61	7.154	1.149	5.234	8.839	12.34	9.017	5.144	0.8763
84.0	12.64	12.15	6.636	0.5561	4.761	8.351	11.84	8.530	4.667	0.3134
87.0	12.13	11.68	6.173	0.3538	4.349	7.879	11.32	8.043	4.246	0.1861
90.0	11.61	11.21	5.776	0.3201	4.007	7.432	10.78	7.585	3.894	0.1783
93.0	11.07	10.75	5.439	0.2865	3.715	7.030	10.27	7.163	3.602	0.1818
96.0	10.54	10.30	5.152	0.2865	3.429	6.653	9.768	6.771	3.366	0.1852
99.0	10.01	9.344	4.886	0.3016	3.162	5.733	9.174	5.878	3.166	0.1887
102.0	9.319	8.714	4.635	0.3570	2.787	5.457	8.628	5.670	2.832	0.2059
105.0	8.842	8.412	4.102	0.3972	2.258	5.226	8.170	5.419	2.302	0.2103
108.0	8.365	8.065	4.046	0.4324	2.166	4.974	7.713	5.147	2.231	0.2146
111.0	7.907	7.688	3.805	0.4826	2.066	4.477	7.259	4.760	2.040	0.2661
114.0	7.475	7.342	3.669	0.5329	1.915	4.176	6.592	4.524	1.894	0.3114
117.0	7.078	6.995	3.654	0.5881	1.775	3.914	6.246	4.218	1.794	0.3668
120.0	6.726	6.673	3.524	0.6384	1.674	3.673	5.904	3.921	1.693	0.4370
123.0	6.379	6.382	3.282	0.6786	1.603	3.427	5.593	3.629	1.597	0.4873
126.0	6.062	6.075	3.096	0.7289	1.518	3.176	5.276	3.353	1.447	0.5376
129.0	5.736	5.793	2.921	0.7741	1.437	2.904	4.908	3.107	1.402	0.5979
132.0	5.409	5.235	2.760	0.8143	1.362	2.643	4.492	2.820	1.311	0.6581
135.0	5.097	4.612	2.624	0.8645	1.312	2.367	3.680	2.534	1.241	0.6835
138.0	4.781	4.150	2.493	0.9047	1.212	2.166	3.490	2.282	1.160	0.7386
141.0	4.469	3.713	2.348	0.9299	1.121	2.009	2.925	2.036	1.075	0.7639
144.0	4.162	3.412	2.227	0.9600	1.006	1.874	2.814	1.940	0.9545	0.7990
147.0	3.861	3.140	2.101	0.9903	0.8749	1.703	2.784	1.805	0.8289	0.8442
150.0	3.564	2.834	1.991	1.071	0.7392	1.532	2.618	1.629	0.7032	0.9547
153.0	3.268	2.547	1.940	1.131	0.6283	1.371	2.341	1.458	0.5983	1.025
156.0	2.991	2.306	1.946	1.186	0.6933	1.180	2.101	1.267	0.6939	1.100
159.0	2.605	2.075	1.942	1.252	0.7439	0.9343	2.044	1.046	0.7169	1.186
162.0	2.398	1.844	1.918	1.317	0.4918	0.7182	1.802	0.7898	0.5220	1.256
165.0	2.107	1.731	1.870	1.382	0.4865	0.7643	1.397	0.6335	0.4965	1.322
168.0	1.192	1.689	1.846	1.427	0.4812	0.7961	0.8892	0.7091	0.4879	1.407
171.0	1.066	1.647	1.809	1.468	0.4759	0.6865	0.8338	0.5075	0.4794	1.437
174.0	0.9154	1.518	1.774	1.508	0.4675	0.5769	0.6880	0.4945	0.4709	1.492
177.0	0.7845	1.442	1.724	1.513	0.4624	0.4674	0.5922	0.4875	0.4624	1.533
180.0	0.4825	0.4724	1.483	1.508	1.518	1.387	0.4774	0.7539	1.251	1.583
G/C	300.0	330.0								
0.0	20.29	20.28								
3.0	20.30	20.41								
6.0	20.30	20.50								
9.0	20.23	20.56								
12.0	20.08	20.56								
15.0	19.85	20.56								
18.0	19.56	20.46								
21.0	19.21	20.31								
24.0	18.80	20.14								
27.0	18.36	19.94								
30.0	17.91	19.69								

C Range: 0 - 360DEG  
 C Interval: 30.0DEG  
 Test Speed: HIGH  
 Temperature: 25.3DEG  
 Operators: LPC  
 Test Date: 2021-12-15

γ Range: 0 - 180DEG  
 γ Interval: 1.0DEG  
 Test System: EVERFINE GO-2000B\_V1 SYSTEM V2.0.362  
 Humidity: 65.0%  
 Test Distance: 9.200m [K=1.0000]  
 Remarks:

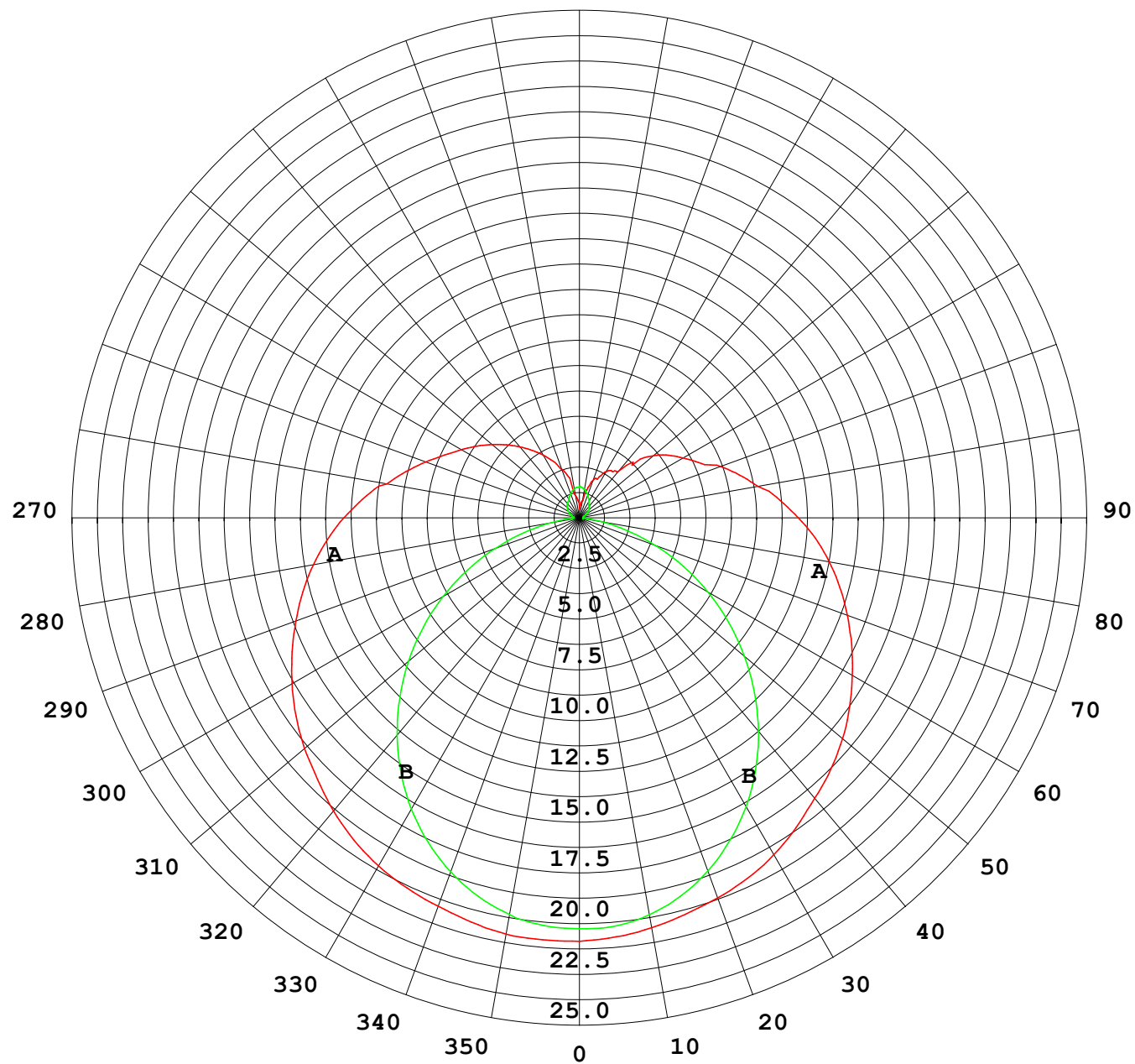
## Photometric Data Table [cd]

33.0	17.41	19.43
36.0	16.90	19.12
39.0	16.35	18.83
42.0	15.78	18.54
45.0	15.16	18.19
48.0	14.50	17.82
51.0	13.82	17.44
54.0	13.15	17.02
57.0	12.48	16.58
60.0	11.79	16.10
63.0	11.09	15.64
66.0	10.40	15.18
69.0	9.687	14.73
72.0	8.993	14.27
75.0	8.336	13.77
78.0	7.727	13.29
81.0	7.129	12.81
84.0	6.597	12.34
87.0	6.130	11.89
90.0	5.733	11.41
93.0	5.381	10.97
96.0	5.095	10.55
99.0	4.834	9.380
102.0	4.576	8.957
105.0	4.060	8.680
108.0	3.970	8.299
111.0	3.820	7.952
114.0	3.790	7.600
117.0	3.507	7.253
120.0	3.281	6.881
123.0	3.181	6.560
126.0	3.023	6.278
129.0	2.724	5.917
132.0	2.683	5.319
135.0	2.547	4.851
138.0	2.336	4.163
141.0	2.160	3.820
144.0	2.040	3.379
147.0	1.914	3.031
150.0	1.794	2.865
153.0	1.819	2.629
156.0	1.875	2.343
159.0	1.886	2.041
162.0	1.888	1.865
165.0	1.890	1.694
168.0	1.834	1.710
171.0	1.764	1.699
174.0	1.734	1.688
177.0	1.683	1.619
180.0	1.578	1.402

C Range: 0 - 360DEG  
C Interval: 30.0DEG  
Test Speed: HIGH  
Temperature:25.3DEG  
Operators:LPC  
Test Date:2021-12-15

γ Range: 0 - 180DEG  
γ Interval: 1.0DEG  
Test System:EVERFINE GO-2000B\_V1 SYSTEM V2.0.362  
Humidity:65.0%  
Test Distance:9.200m [K=1.0000]  
Remarks:

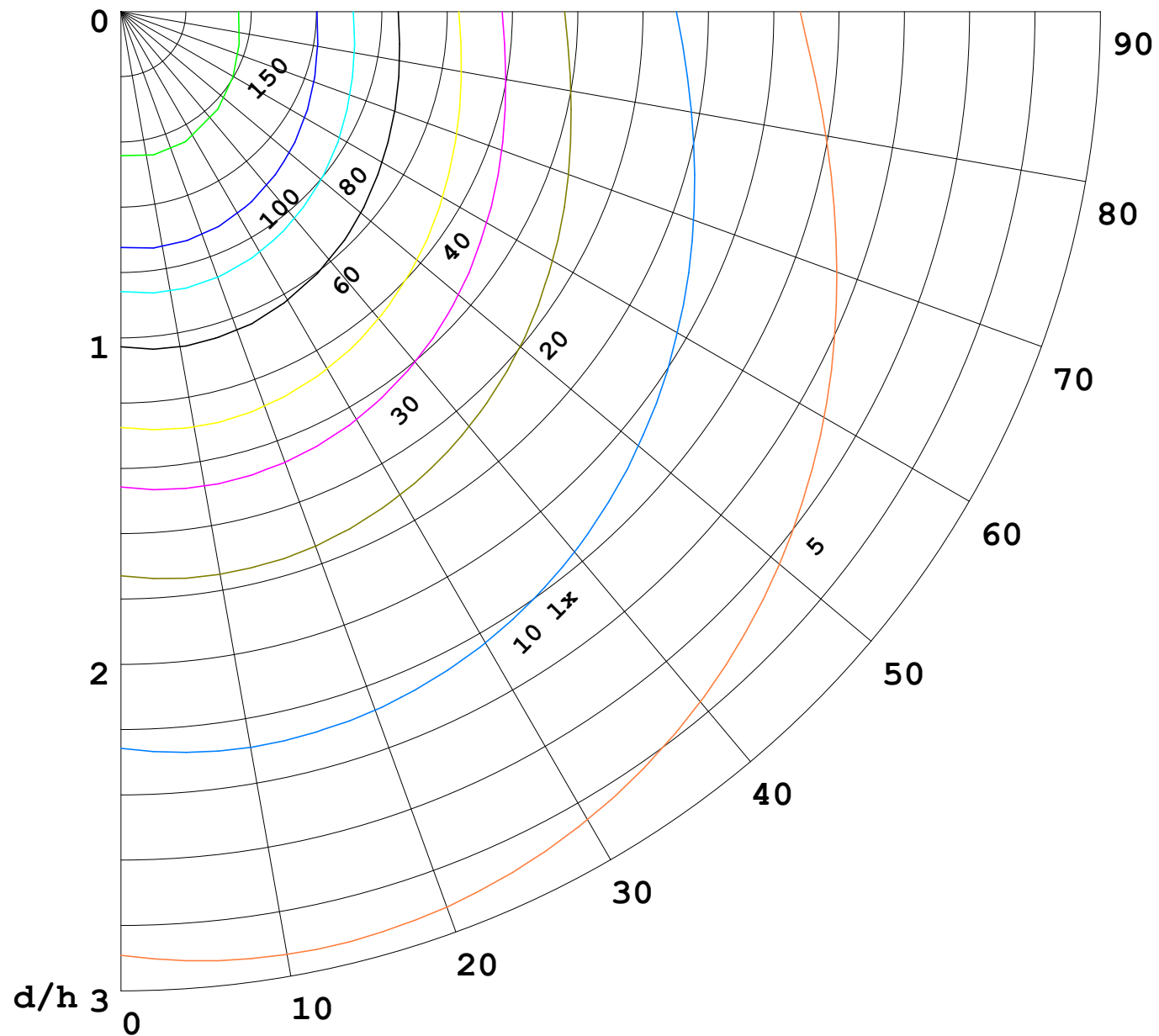
I (cd)





1000 lm

$\kappa = 1$



F = 5000 lm  
 K = 0.7  
 Hcc = 0.0 m  
 Hfc = 0.0 m  
 Eave = 100 lx

	Pcc	Pw	Pfc
—	70	50	30
—	50	30	20

