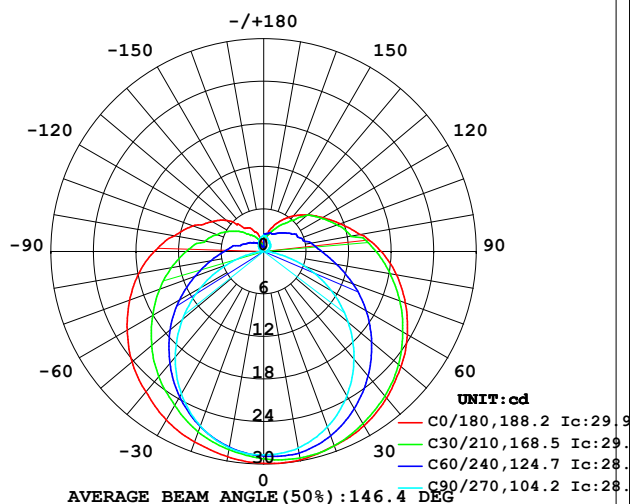


LUMINAIRE PHOTOMETRIC TEST REPORT

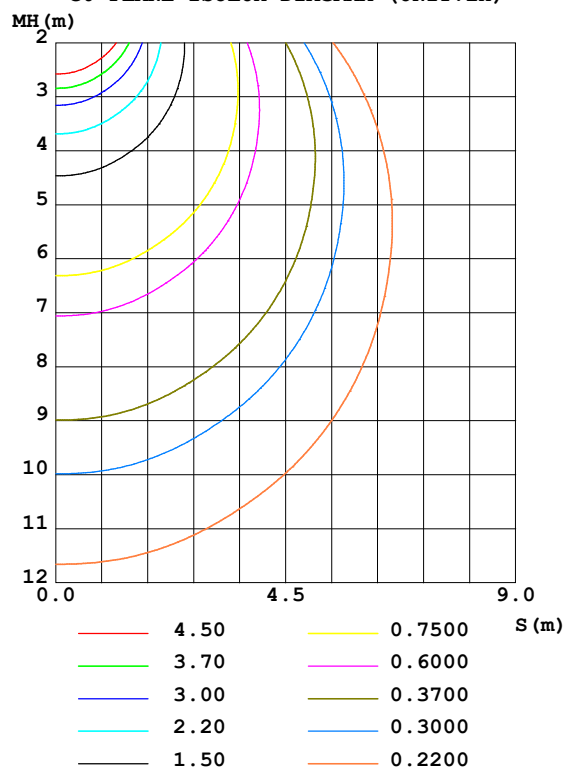
Test:U:24.00V I:0.4895A P:11.75W PF:1.000 Freq:50.00Hz Lamp Flux:146.484x1 lm		
NAME: SF21-24V-5050-56-DMX3-RGB	TYPE: 硅胶	WEIGHT:
SPEC.:	DIM.: 28mm*11.5mm	SERIAL No.:2021121504
MFR.: OLYMPIA	SUR.:1*0.016	Shielding Angle:

DATA OF LAMP		PHOTOMETRIC DATA Eff: 12.47 lm/W			
MODEL	5050	I _{max} (cd)	29.94	S/MH (C0/180)	1.38
NOMINAL POWER (W)	12	LOR (%)	100.0	S/MH (C90/270)	1.21
RATED VOLTAGE (V)	24	TOTAL FLUX (lm)	146.48	η UP, DN (C0-180)	11.7, 38.7
NOMINAL FLUX (lm)	146.484	CIE CLASS	SEMI-D.	η UP, DN (C180-360)	11.3, 38.3
LAMPS INSIDE	1	η up (%)	23.0	CIBSE SHR NOM	1.50
TEST VOLTAGE (V)	24	η down (%)	77.0	CIBSE SHR MAX	1.55

LUMINOUS INTENSITY DISTRIBUTION DIAGRAM



C0 PLANE ISOLUX DIAGRAM (UNIT:lx)



C Range: 0 - 360DEG
C Interval: 30.0DEG
Test Speed: HIGH
Temperature:25.3DEG
Operators:LPC
Test Date:2021-12-15

γ Range: 0 - 180DEG
γ Interval: 1.0DEG
Test System:EVERFINE GO-2000B_V1 SYSTEM V2.0.362
Humidity:65.0%
Test Distance:9.200m [K=1.0000]
Remarks:

ZONAL FLUX DIAGRAM

ZONAL FLUX DIAGRAM:

γ	C0	C45	C90	C135	C180	C225	C270	C315	γ	Φ zone	Φ total	%lum, lamp
10	29.84	29.23	28.13	27.81	29.40	28.20	28.10	28.75	0- 10	2.750	2.750	1.88,1.88
20	29.17	28.40	26.31	26.24	28.57	26.67	26.17	28.01	10- 20	7.941	10.69	7.3,7.3
30	28.36	26.81	23.50	24.00	27.46	24.39	23.22	26.53	20- 30	12.24	22.93	15.7,15.7
40	26.99	24.77	19.81	21.44	25.85	21.82	19.41	24.62	30- 40	15.26	38.19	26.1,26.1
50	25.30	22.35	15.57	18.58	24.25	18.93	15.00	22.30	40- 50	16.83	55.02	37.6,37.6
60	23.39	19.67	11.03	15.60	22.24	15.91	10.34	19.67	50- 60	16.93	71.94	49.1,49.1
70	21.27	16.93	6.253	12.72	20.12	12.98	5.592	16.96	60- 70	15.74	87.68	59.9,59.9
80	19.03	14.28	1.997	10.18	17.90	10.41	1.555	14.34	70- 80	13.68	101.4	69.2,69.2
90	16.60	12.03	0.4238	8.092	15.43	8.260	0.2508	12.12	80- 90	11.38	112.7	77,77
100	13.80	9.647	0.4577	6.174	12.77	6.430	0.3015	9.807	90-100	9.443	122.2	83.4,83.4
110	11.51	8.290	0.6987	4.754	10.60	4.998	0.4225	8.483	100-110	7.370	129.6	88.4,88.4
120	9.591	7.217	0.9299	3.799	8.447	4.071	0.6882	7.195	110-120	5.791	135.3	92.4,92.4
130	8.033	6.015	1.156	3.003	6.828	3.179	0.9297	6.057	120-130	4.405	139.8	95.4,95.4
140	6.545	4.437	1.342	2.287	4.316	2.335	1.121	4.345	130-140	3.026	142.8	97.5,97.5
150	5.103	3.437	1.568	1.618	3.809	1.731	1.422	3.320	140-150	1.891	144.7	98.8,98.8
160	3.645	2.810	1.845	1.051	2.799	1.155	1.784	2.748	150-160	1.121	145.8	99.5,99.5
170	1.594	2.479	2.126	0.6936	1.221	0.7116	2.080	2.520	160-170	0.5416	146.3	99.9,99.9
180	0.7137	1.473	2.236	2.133	0.7086	1.475	2.302	2.156	170-180	0.1533	146.5	100,100
DEG	LUMINOUS INTENSITY:cd									UNIT:lm		

Conical surface Flux(90deg): 46.501 lm

%lum = 31.7%

%lamp = 31.7%

Conical surface Flux(120deg): 71.944 lm

%lum = 49.1%

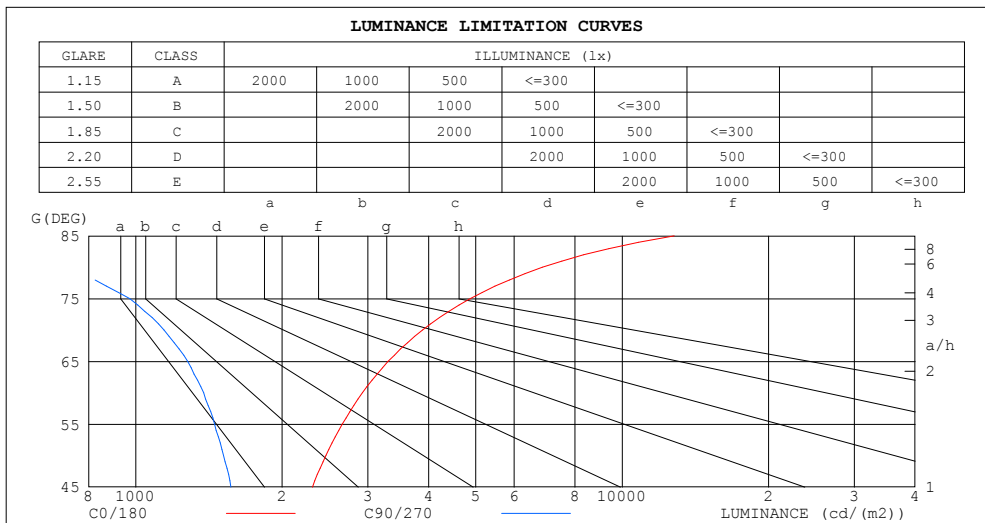
%lamp = 49.1%

C Range: 0 - 360DEG
 C Interval: 30.0DEG
 Test Speed: HIGH
 Temperature:25.3DEG
 Operators:LPC
 Test Date:2021-12-15

γ Range: 0 - 180DEG
 γ Interval: 1.0DEG
 Test System:EVERFINE GO-2000B_V1 SYSTEM V2.0.362
 Humidity:65.0%
 Test Distance:9.200m [K=1.0000]
 Remarks:

LUMINANCE LIMITATION CURVES

Test:U:24.00V I:0.4895A P:11.75W PF:1.000 Freq:50.00Hz Lamp Flux:146.484x1 lm		
NAME: SF21-24V-5050-56-DMX3-RGB	TYPE: 硅胶	WEIGHT:
SPEC.:	DIM.: 28mm*11.5mm	SERIAL No.:2021121504
MFR.: OLYMPIA	SUR.:1*0.016	Shielding Angle:



LUMINANCE cd/(m2)		
G (DEG)	C0/180	C90/270
85	12785	417
80	6849	719
75	4870	971
70	3886	1143
65	3302	1279
60	2924	1378
55	2659	1452
50	2460	1514
45	2308	1569

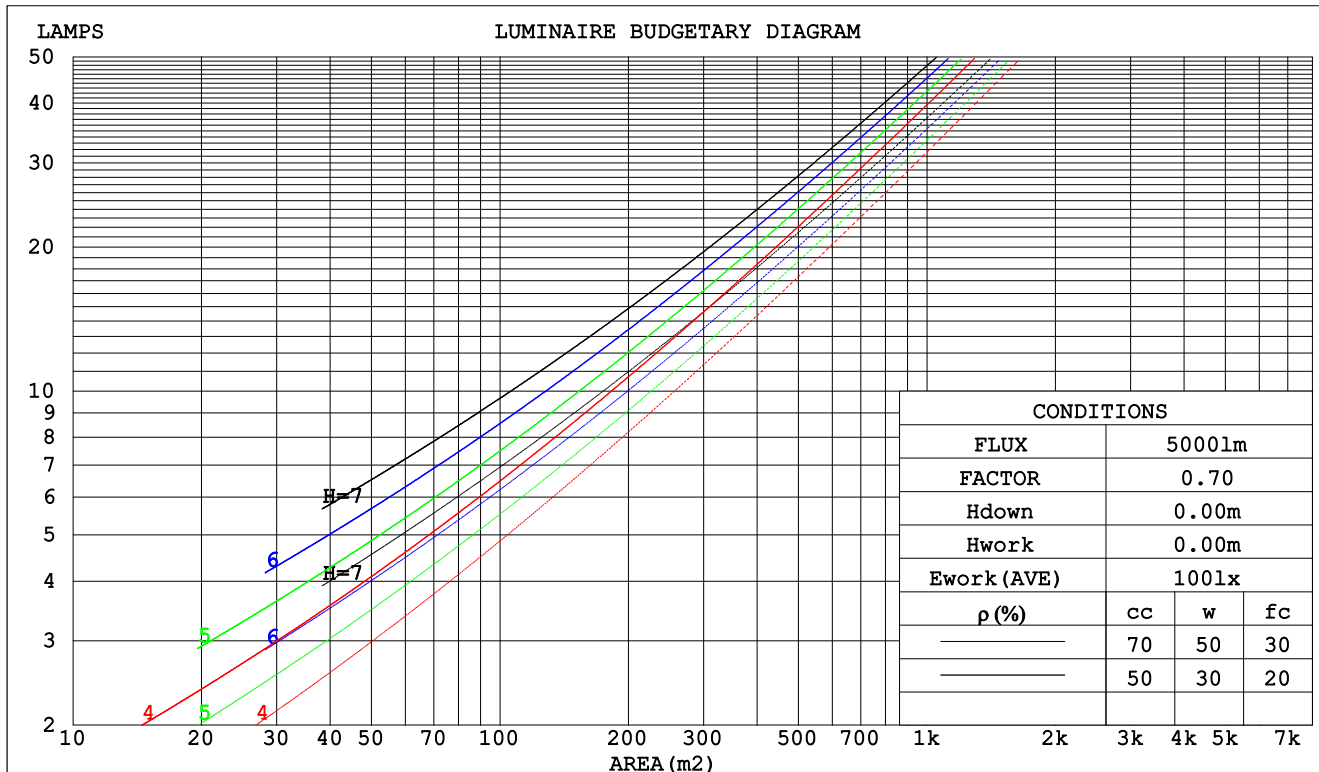
C Range: 0 - 360DEG
C Interval: 30.0DEG
Test Speed: HIGH
Temperature:25.3DEG
Operators:LPC
Test Date:2021-12-15

γ Range: 0 - 180DEG
 γ Interval: 1.0DEG
Test System:EVERFINE GO-2000B_V1 SYSTEM V2.0.362
Humidity:65.0%
Test Distance:9.200m [K=1.0000]
Remarks:

CU AND LUMINAIRE BUDGETARY ESTIMATE DIAGRAM

Test:U:24.00V I:0.4895A P:11.75W PF:1.000 Freq:50.00Hz Lamp Flux:146.484x1 lm		
NAME: SF21-24V-5050-56-DMX3-RGB	TYPE: 硅胶	WEIGHT:
SPEC.:	DIM.: 28mm*11.5mm	SERIAL No.:2021121504
MFR.: OLYMPIA	SUR.:1*0.016	Shielding Angle:

pcc	80%			70%			50%			30%			10%			0
pw	50%	30%	10%	50%	30%	10%	50%	30%	10%	50%	30%	10%	50%	30%	10%	0
pfc	20%			20%			20%			20%			20%			0
RCR	RCR:Room Cavity Ratio						Coefficients of Utilization(CU)									
0.0	1.14	1.14	1.14	1.08	1.08	1.08	.98	.98	.98	.89	.89	.89	.81	.81	.81	.77
1.0	.94	.89	.84	.90	.85	.80	.81	.77	.74	.73	.70	.67	.66	.64	.61	.58
2.0	.81	.73	.66	.77	.70	.63	.69	.63	.58	.62	.58	.54	.56	.52	.49	.46
3.0	.70	.61	.54	.66	.58	.52	.60	.53	.48	.54	.49	.44	.49	.44	.40	.37
4.0	.61	.52	.45	.58	.50	.43	.53	.46	.40	.48	.42	.37	.43	.38	.34	.31
5.0	.54	.45	.38	.52	.43	.37	.47	.40	.34	.43	.36	.32	.38	.33	.29	.26
6.0	.49	.39	.33	.46	.38	.32	.42	.35	.29	.38	.32	.27	.35	.29	.25	.23
7.0	.44	.35	.28	.42	.34	.28	.38	.31	.26	.35	.29	.24	.32	.26	.22	.20
8.0	.40	.31	.25	.38	.30	.24	.35	.28	.23	.32	.26	.21	.29	.24	.20	.18
9.0	.36	.28	.22	.35	.27	.22	.32	.25	.20	.29	.23	.19	.27	.22	.18	.16
10.0	.33	.25	.20	.32	.25	.20	.29	.23	.18	.27	.21	.17	.25	.20	.16	.14



C Range: 0 - 360DEG
 C Interval: 30.0DEG
 Test Speed: HIGH
 Temperature:25.3DEG
 Operators:LPC
 Test Date:2021-12-15

γ Range: 0 - 180DEG
 γ Interval: 1.0DEG
 Test System:EVERFINE GO-2000B_V1 SYSTEM V2.0.362
 Humidity:65.0%
 Test Distance:9.200m [K=1.0000]
 Remarks:

WEC AND CCEC

Test:U:24.00V I:0.4895A P:11.75W PF:1.000 Freq:50.00Hz Lamp Flux:146.484x1 lm		
NAME: SF21-24V-5050-56-DMX3-RGB	TYPE: 硅胶	WEIGHT:
SPEC.:	DIM.: 28mm*11.5mm	SERIAL No.:2021121504
MFR.: OLYMPIA	SUR.:1*0.016	Shielding Angle:

pcc	80%			70%			50%			30%			10%			0	
pw	50%	30%	10%	50%	30%	10%	50%	30%	10%	50%	30%	10%	50%	30%	10%	0	
pfc	20%			20%			20%			20%			20%			0	
RCR	RCR:Room Cavity Ratio						Wall Exitance Coefficients(WEC)										
0.0																	
1.0	.388	.220	.070	.373	.213	.068	.347	.199	.064	.322	.186	.060	.299	.174	.056		
2.0	.333	.183	.056	.321	.177	.054	.296	.165	.051	.274	.154	.048	.253	.143	.045		
3.0	.295	.157	.047	.284	.152	.046	.262	.142	.043	.242	.132	.041	.223	.123	.038		
4.0	.265	.138	.041	.255	.133	.039	.235	.125	.037	.216	.116	.035	.199	.108	.033		
5.0	.241	.123	.036	.232	.119	.035	.213	.111	.033	.196	.104	.031	.181	.097	.029		
6.0	.221	.111	.032	.212	.107	.031	.195	.100	.029	.180	.093	.027	.165	.087	.026		
7.0	.204	.101	.029	.196	.097	.028	.180	.091	.026	.166	.085	.025	.153	.079	.023		
8.0	.189	.092	.026	.181	.089	.025	.167	.084	.024	.154	.078	.023	.142	.073	.021		
9.0	.176	.085	.024	.169	.082	.023	.156	.077	.022	.144	.072	.021	.132	.067	.019		
10.0	.164	.079	.022	.158	.076	.021	.146	.072	.020	.135	.067	.019	.124	.062	.018		

pcc	80%			70%			50%			30%			10%			0	
pw	50%	30%	10%	50%	30%	10%	50%	30%	10%	50%	30%	10%	50%	30%	10%	0	
pfc	20%			20%			20%			20%			20%			0	
RCR	RCR:Room Cavity Ratio						Ceiling Cavity Exitance Coefficients(CCEC)										
0.0	.366	.366	.366	.313	.313	.313	.213	.213	.213	.123	.123	.123	.039	.039	.039		
1.0	.363	.332	.305	.310	.285	.263	.212	.196	.182	.122	.114	.106	.039	.037	.034		
2.0	.356	.310	.271	.305	.267	.234	.209	.185	.163	.120	.107	.096	.039	.035	.031		
3.0	.348	.294	.250	.299	.253	.217	.205	.176	.152	.118	.103	.090	.038	.033	.029		
4.0	.341	.281	.236	.292	.243	.205	.201	.169	.144	.116	.099	.085	.037	.032	.028		
5.0	.333	.272	.226	.286	.235	.197	.197	.164	.139	.114	.096	.082	.037	.031	.027		
6.0	.326	.264	.219	.280	.228	.191	.193	.160	.135	.112	.094	.080	.036	.031	.027		
7.0	.319	.257	.214	.274	.223	.187	.189	.156	.132	.110	.092	.079	.036	.030	.026		
8.0	.312	.252	.210	.269	.218	.183	.186	.153	.130	.108	.090	.077	.035	.030	.026		
9.0	.306	.247	.207	.263	.214	.181	.183	.151	.128	.106	.089	.077	.034	.029	.025		
10.0	.300	.243	.205	.259	.211	.179	.179	.148	.127	.105	.088	.076	.034	.029	.025		

C Range: 0 - 360DEG
C Interval: 30.0DEG
Test Speed: HIGH
Temperature:25.3DEG
Operators:LPC
Test Date:2021-12-15

γ Range: 0 - 180DEG
γ Interval: 1.0DEG
Test System:EVERFINE GO-2000B_V1 SYSTEM V2.0.362
Humidity:65.0%
Test Distance:9.200m [K=1.0000]
Remarks:

UGR(Unified Glare Rating) Table

Test:U:24.00V I:0.4895A P:11.75W PF:1.000 Freq:50.00Hz Lamp Flux:146.484x1 lm										
NAME: SF21-24V-5050-56-DMX3-RGB					TYPE: 硅胶			WEIGHT:		
SPEC.:					DIM.: 28mm*11.5mm			SERIAL No.:2021121504		
MFR.: OLYMPIA					SUR.:1*0.016			Shielding Angle:		
ceiling/cavity	0.7	0.7	0.5	0.5	0.3	0.7	0.7	0.5	0.5	0.3
walls	0.5	0.3	0.5	0.3	0.3	0.5	0.3	0.5	0.3	0.3
working plane	0.2	0.2	0.2	0.2	0.2	0.2	0.2	0.2	0.2	0.2
Room dimensions	Viewed crosswise					Viewed endwise				
x = 2H y = 2H	22.4	23.7	22.9	24.3	24.9	19.6	20.9	20.2	21.5	22.1
3H	25.2	26.4	25.8	27.0	27.7	21.0	22.2	21.6	22.9	23.6
4H	26.7	27.9	27.3	28.5	29.2	21.6	22.7	22.2	23.4	24.1
6H	28.5	29.5	29.1	30.2	30.9	21.9	23.0	22.6	23.7	24.4
8H	29.4	30.5	30.1	31.1	31.9	22.0	23.1	22.7	23.7	24.5
12H	30.5	31.5	31.2	32.2	33.0	22.0	23.1	22.7	23.7	24.5
4H 2H	23.0	24.1	23.6	24.7	25.5	21.0	22.2	21.7	22.8	23.5
3H	26.1	27.1	26.7	27.7	28.5	22.8	23.8	23.5	24.5	25.3
4H	27.8	28.8	28.5	29.4	30.2	23.6	24.6	24.3	25.3	26.1
6H	29.8	30.6	30.5	31.3	32.1	24.3	25.1	25.0	25.8	26.6
8H	30.9	31.6	31.6	32.3	33.2	24.5	25.2	25.2	26.0	26.8
12H	32.1	32.8	32.8	33.5	34.4	24.6	25.3	25.3	26.1	26.9
8H 4H	28.2	29.0	28.9	29.7	30.6	25.0	25.8	25.8	26.5	27.4
6H	30.5	31.2	31.3	31.9	32.8	26.2	26.8	26.9	27.6	28.4
8H	31.8	32.4	32.6	33.2	34.1	26.6	27.2	27.4	28.0	28.9
12H	33.3	33.8	34.1	34.6	35.5	27.0	27.5	27.8	28.3	29.3
12H 4H	28.2	28.9	29.0	29.7	30.6	25.5	26.2	26.2	27.0	27.8
6H	30.6	31.2	31.4	32.0	32.9	26.9	27.5	27.7	28.3	29.2
8H	32.1	32.6	32.9	33.4	34.3	27.6	28.1	28.4	28.9	29.8
Variations with the observer position at spacings:										
S = 1.0H	+ 0.1 / - 0.1					+ 0.1 / - 0.1				
1.5H	+ 0.2 / - 0.3					+ 0.2 / - 0.3				
2.0H	+ 0.3 / - 0.4					+ 0.3 / - 0.4				

CIE Pub.117, 146.5 lm Total Lamp Luminous Flux Correct (8log(F/F0) = -6.7)

C Range: 0 - 360DEG
C Interval: 30.0DEG
Test Speed: HIGH
Temperature:25.3DEG
Operators:LPC
Test Date:2021-12-15

γ Range: 0 - 180DEG
γ Interval: 1.0DEG
Test System:EVERFINE GO-2000B_V1 SYSTEM V2.0.362
Humidity:65.0%
Test Distance:9.200m [K=1.0000]
Remarks:

UTILIZATION FACTORS TABLE

Test:U:24.00V I:0.4895A P:11.75W PF:1.000 Freq:50.00Hz Lamp Flux:146.484x1 lm		
NAME: SF21-24V-5050-56-DMX3-RGB	TYPE: 硅胶	WEIGHT:
SPEC.:	DIM.: 28mm*11.5mm	SERIAL No.:2021121504
MFR.: OLYMPIA	SUR.:1*0.016	Shielding Angle:

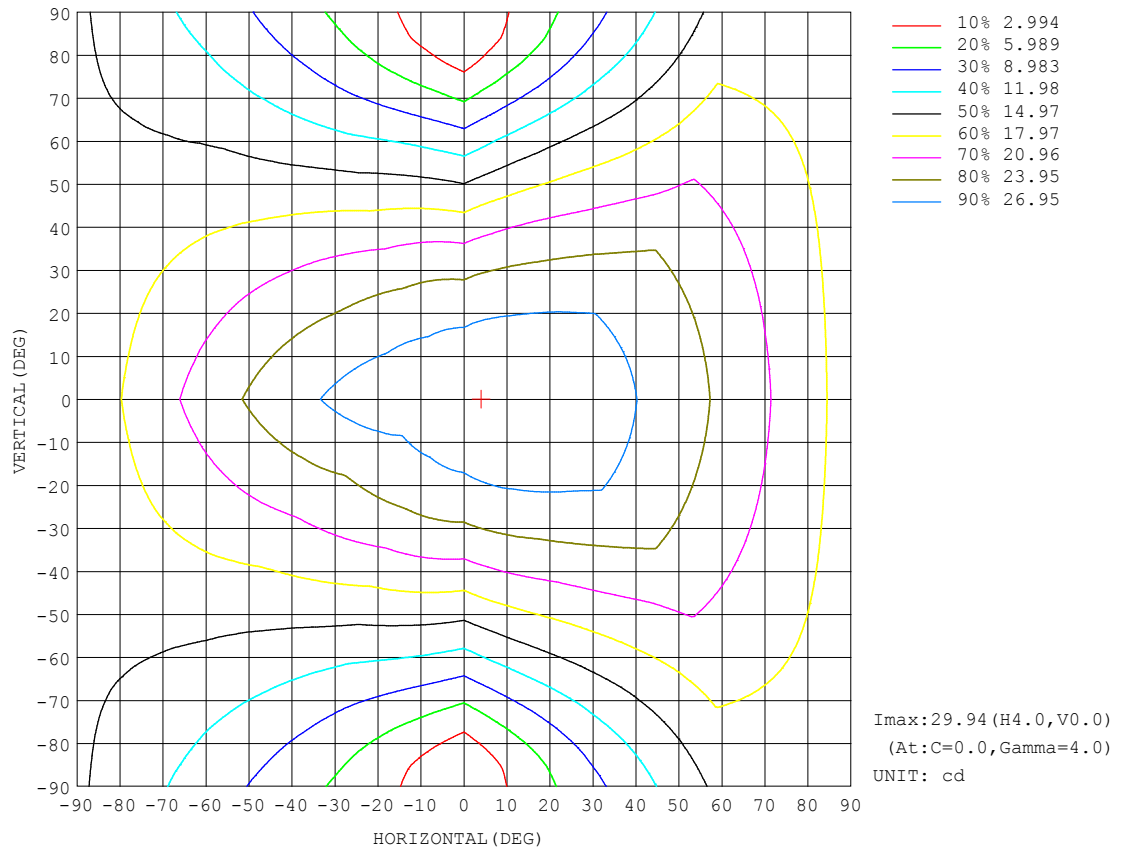
REFLECTANCE										
Ceiling	0.8	0.8	0.8	0.7	0.7	0.7	0.5	0.5	0.5	0
Walls	0.7	0.5	0.3	0.7	0.5	0.3	0.7	0.5	0.3	0
Working plane	0.2	0.2	0.2	0.2	0.2	0.2	0.2	0.2	0.2	0
ROOM INDEX	UTILIZATION FACTORS (PERCENT) $k(RI) \times RCR = 5$									
$k = 0.60$	46	34	26	45	33	26	43	32	26	19
0.80	55	42	34	53	41	34	50	40	33	24
1.00	63	50	41	61	48	41	57	49	39	30
1.25	70	57	48	67	55	47	62	52	45	35
1.50	75	62	54	72	60	52	66	57	50	39
2.00	82	71	62	79	68	61	72	64	57	45
2.50	87	76	68	83	73	66	76	68	62	48
3.00	90	81	73	86	78	71	79	72	66	52
4.00	95	87	80	91	84	77	83	77	72	56
5.00	98	91	85	94	87	82	85	80	76	59
ROOM INDEX	UF (total)									Direct
According to DIN EN 13032-2 2004			Suspended					SHRNOM = 1.25		

C Range: 0 - 360DEG
 C Interval: 30.0DEG
 Test Speed: HIGH
 Temperature: 25.3DEG
 Operators: LPC
 Test Date: 2021-12-15

γ Range: 0 - 180DEG
 γ Interval: 1.0DEG
 Test System: EVERFINE GO-2000B_V1 SYSTEM V2.0.362
 Humidity: 65.0%
 Test Distance: 9.200m [K=1.0000]
 Remarks:

ISOCANDELA DIAGRAM

Test:U:24.00V I:0.4895A P:11.75W PF:1.000 Freq:50.00Hz Lamp Flux:146.484x1 lm		
NAME: SF21-24V-5050-56-DMX3-RGB	TYPE: 硅胶	WEIGHT:
SPEC.:	DIM.: 28mm*11.5mm	SERIAL No.:2021121504
MFR.: OLYMPIA	SUR.:1*0.016	Shielding Angle:

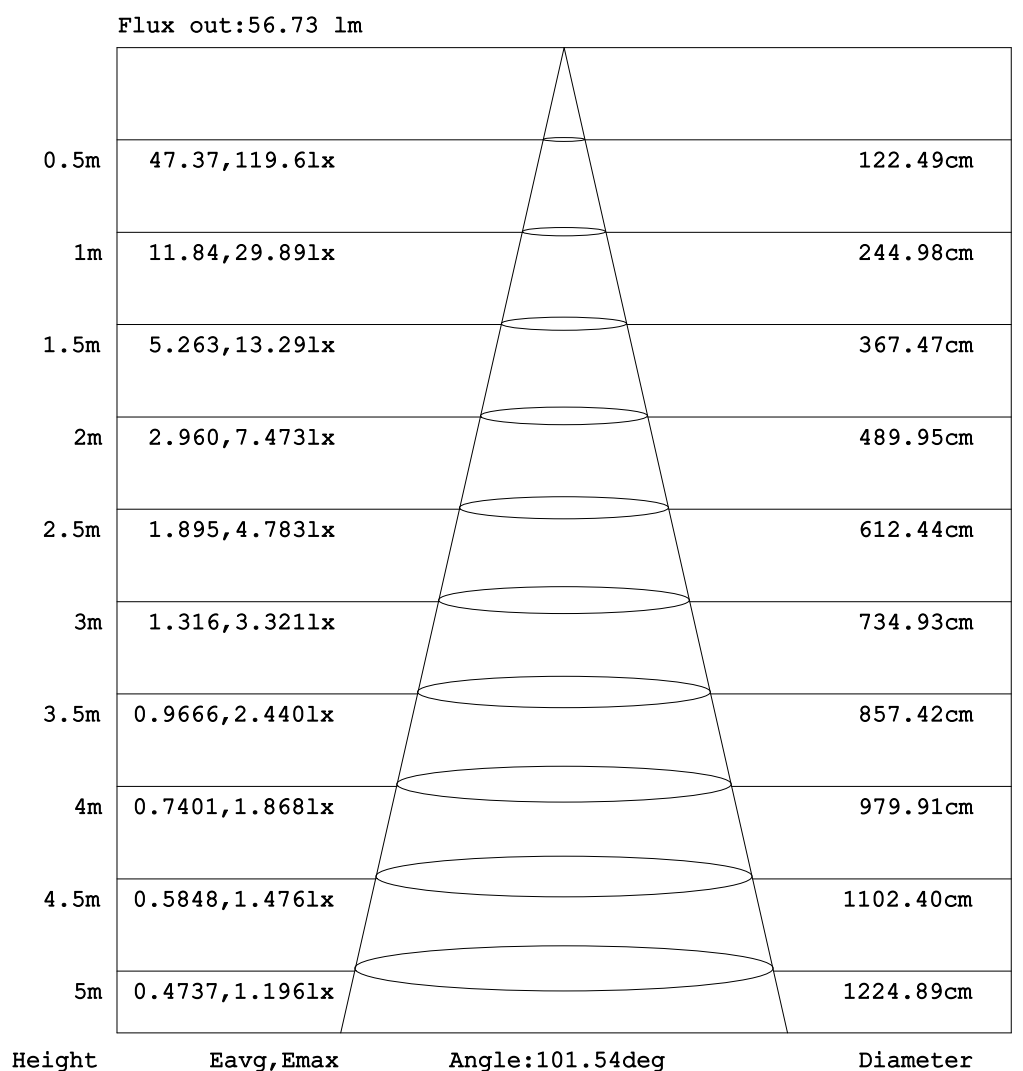


C Range: 0 - 360DEG
C Interval: 30.0DEG
Test Speed: HIGH
Temperature:25.3DEG
Operators:LPC
Test Date:2021-12-15

γ Range: 0 - 180DEG
 γ Interval: 1.0DEG
Test System:EVERFINE GO-2000B_V1 SYSTEM V2.0.362
Humidity:65.0%
Test Distance:9.200m [K=1.0000]
Remarks:

AAI Figure

Test:U:24.00V I:0.4895A P:11.75W PF:1.000 Freq:50.00Hz Lamp Flux:146.484x1 lm		
NAME: SF21-24V-5050-56-DMX3-RGB	TYPE: 硅胶	WEIGHT:
SPEC.:	DIM.: 28mm*11.5mm	SERIAL No.:2021121504
MFR.: OLYMPIA	SUR.:1*0.016	Shielding Angle:



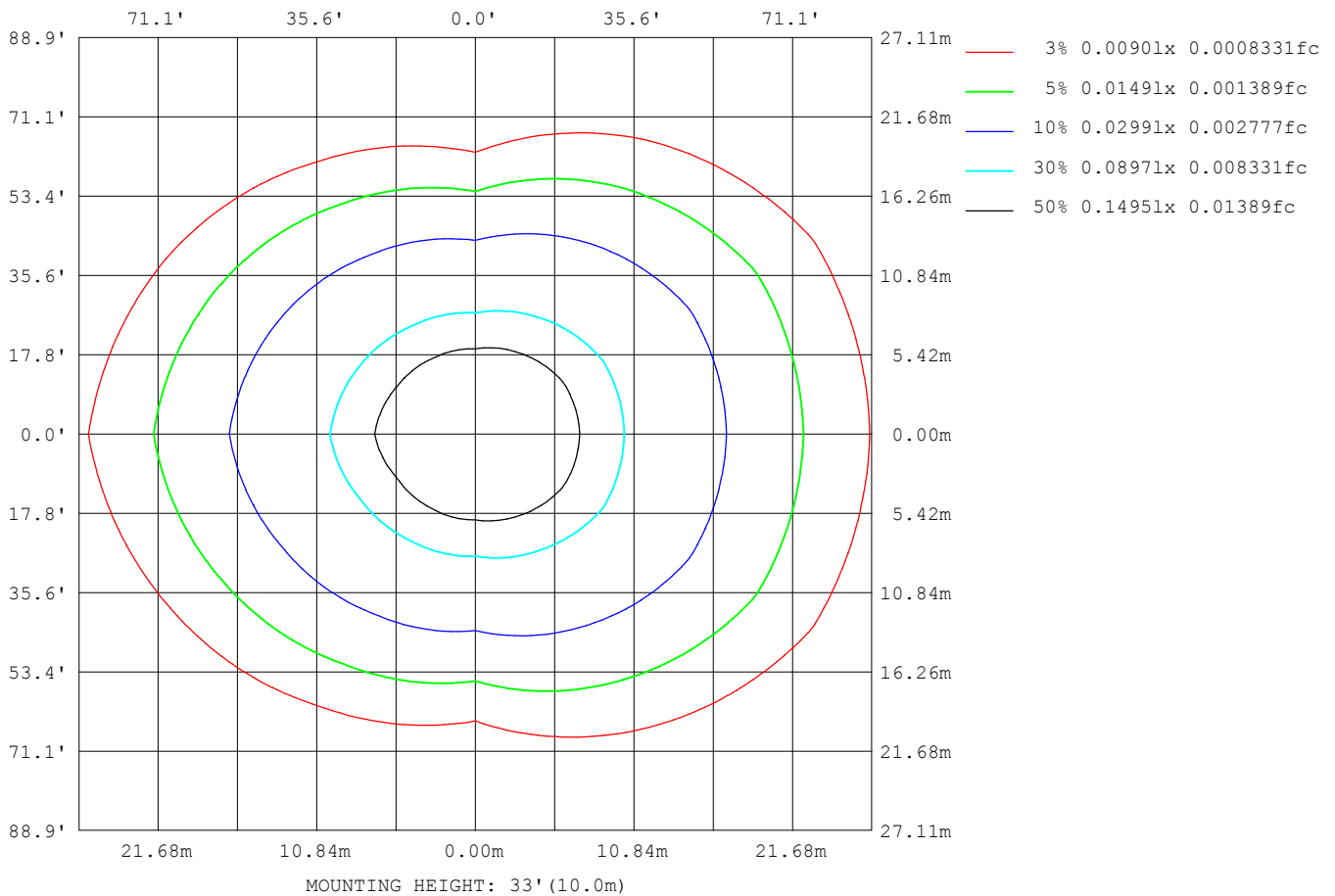
Note: The Curves indicate the illuminated area and the average illumination when the luminaire is at different distance.

C Range: 0 - 360DEG
 C Interval: 30.0DEG
 Test Speed: HIGH
 Temperature: 25.3DEG
 Operators: LPC
 Test Date: 2021-12-15

γ Range: 0 - 180DEG
 γ Interval: 1.0DEG
 Test System: EVERFINE GO-2000B_V1 SYSTEM V2.0.362
 Humidity: 65.0%
 Test Distance: 9.200m [K=1.0000]
 Remarks:

ISOLUX DIAGRAM

Test:U:24.00V I:0.4895A P:11.75W PF:1.000 Freq:50.00Hz Lamp Flux:146.484x1 lm		
NAME: SF21-24V-5050-56-DMX3-RGB	TYPE: 硅胶	WEIGHT:
SPEC.:	DIM.: 28mm*11.5mm	SERIAL No.:2021121504
MFR.: OLYMPIA	SUR.:1*0.016	Shielding Angle:



C Range: 0 - 360DEG
C Interval: 30.0DEG
Test Speed: HIGH
Temperature:25.3DEG
Operators:LPC
Test Date:2021-12-15

γ Range: 0 - 180DEG
 γ Interval: 1.0DEG
Test System:EVERFINE GO-2000B_V1 SYSTEM V2.0.362
Humidity:65.0%
Test Distance:9.200m [K=1.0000]
Remarks:

LED Avg.L Report

Test:U:24.00V I:0.4895A P:11.75W PF:1.000 Freq:50.00Hz Lamp Flux:146.484x1 lm		
NAME: SF21-24V-5050-56-DMX3-RGB	TYPE:硅胶	WEIGHT:
SPEC.:	DIM.: 28mm*11.5mm	SERIAL No.:2021121504
MFR.: OLYMPIA	SUR.:1*0.016	Shielding Angle:

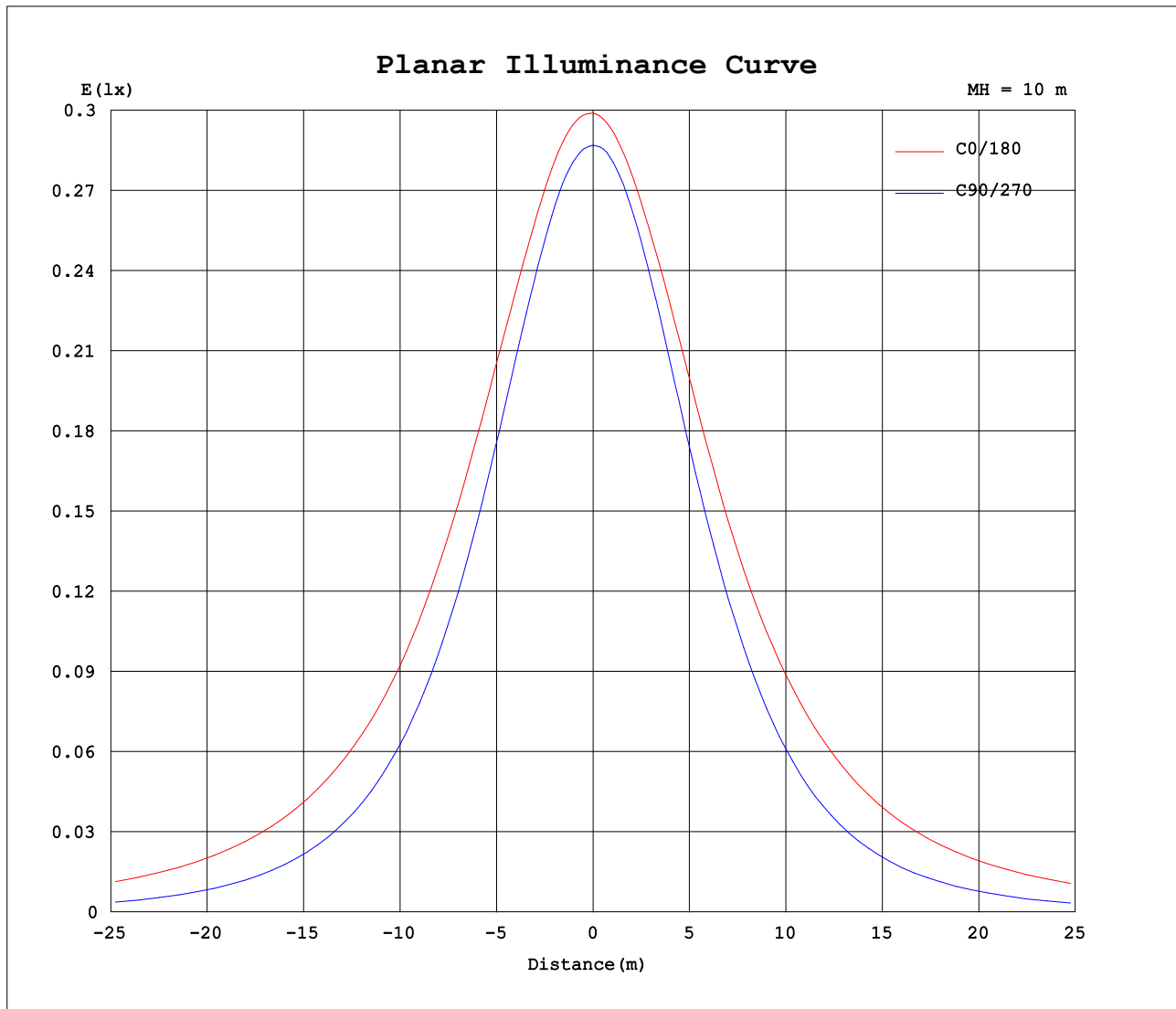
AvgL	cd/m2
L_0~180 (65) av	3218
L_0~180 (75) av	4733
L_0~180 (85) av	12385
L_90~270 (65) av	1230
L_90~270 (75) av	898
L_90~270 (85) av	335
L_45 (65) av	2433
L_45 (75) av	3333
L_45 (85) av	8193

Standard: GB/T 29293-2012

C Range: 0 - 360DEG
C Interval: 30.0DEG
Test Speed: HIGH
Temperature:25.3DEG
Operators:LPC
Test Date:2021-12-15

γ Range: 0 - 180DEG
γ Interval: 1.0DEG
Test System:EVERFINE GO-2000B_V1 SYSTEM V2.0.362
Humidity:65.0%
Test Distance:9.200m [K=1.0000]
Remarks:

Planar Illuminance Curve



C Range: 0 - 360DEG
C Interval: 30.0DEG
Test Speed: HIGH
Temperature: 25.3DEG
Operators: LPC
Test Date: 2021-12-15

γ Range: 0 - 180DEG
 γ Interval: 1.0DEG
Test System: EVERFINE GO-2000B_V1 SYSTEM V2.0.362
Humidity: 65.0%
Test Distance: 9.200m [K=1.0000]
Remarks:

LUMINOUS DISTRIBUTION INTENSITY DATA

Test:U:24.00V I:0.4895A P:11.75W PF:1.000 Freq:50.00Hz Lamp Flux:146.484x1 lm		
NAME: SF21-24V-5050-56-DMX3-RGB	TYPE: 硅胶	WEIGHT:
SPEC.:	DIM.: 28mm*11.5mm	SERIAL No.:2021121504
MFR.: OLYMPIA	SUR.:1*0.016	Shielding Angle:

Table--1

UNIT: cd

C (DEG) γ (DEG)	0	30	60	90	120	150	180	210	240	270	300	330						
0	29.9	29.2	28.9	28.7	28.7	28.6	29.9	29.2	28.9	28.7	28.7	28.6						
5	29.9	29.5	29.0	28.6	28.3	28.2	29.7	28.8	28.6	28.6	28.7	28.9						
10	29.8	29.6	28.9	28.1	27.9	27.8	29.4	28.4	28.0	28.1	28.5	29.0						
15	29.5	29.5	28.4	27.4	27.1	27.2	29.0	27.8	27.3	27.3	28.1	28.9						
20	29.2	29.1	27.7	26.3	26.1	26.4	28.6	27.1	26.3	26.2	27.3	28.7						
25	28.8	28.7	26.7	25.0	24.9	25.4	28.1	26.1	25.1	24.8	26.4	28.3						
30	28.4	28.0	25.6	23.5	23.6	24.4	27.5	25.1	23.7	23.2	25.3	27.7						
35	27.7	27.3	24.3	21.7	22.1	23.5	26.7	24.1	22.2	21.4	24.1	27.1						
40	27.0	26.6	22.9	19.8	20.5	22.4	25.9	23.0	20.6	19.4	22.8	26.4						
45	26.1	25.8	21.4	17.7	18.8	21.2	25.1	21.9	18.9	17.3	21.4	25.6						
50	25.3	24.8	19.9	15.6	17.2	20.0	24.3	20.6	17.2	15.0	19.9	24.7						
55	24.4	23.8	18.3	13.3	15.4	18.8	23.3	19.4	15.5	12.7	18.3	23.8						
60	23.4	22.6	16.7	11.0	13.7	17.5	22.2	18.1	13.7	10.3	16.7	22.7						
65	22.3	21.6	15.1	8.65	11.9	16.3	21.2	16.8	12.0	7.98	15.0	21.6						
70	21.3	20.4	13.4	6.25	10.3	15.1	20.1	15.6	10.3	5.59	13.4	20.5						
75	20.2	19.3	11.9	4.02	8.88	13.9	19.0	14.4	8.87	3.41	11.8	19.4						
80	19.0	18.1	10.4	2.00	7.63	12.7	17.9	13.2	7.59	1.56	10.4	18.3						
85	17.8	17.0	9.19	0.58	6.53	11.6	16.7	12.0	6.47	0.35	9.11	17.2						
90	16.6	15.9	8.20	0.42	5.66	10.5	15.4	10.9	5.58	0.25	8.11	16.1						
95	15.3	14.8	7.45	0.43	4.99	9.59	14.2	9.95	4.93	0.27	7.36	15.1						
100	13.8	12.5	6.83	0.46	4.37	7.98	12.8	8.41	4.45	0.30	6.74	12.9						
105	12.6	11.9	5.84	0.60	3.20	7.41	11.7	7.82	3.33	0.38	5.74	12.2						
110	11.5	11.0	5.55	0.70	3.01	6.50	10.6	6.96	3.03	0.42	5.59	11.4						
115	10.5	10.2	5.27	0.81	2.66	5.80	9.26	6.39	2.68	0.53	4.82	10.6						
120	9.59	9.43	5.01	0.93	2.39	5.21	8.45	5.69	2.46	0.69	4.67	9.72						
125	8.80	8.72	4.49	1.05	2.19	4.63	7.70	5.00	2.15	0.80	4.35	8.98						
130	8.03	7.95	4.08	1.16	2.00	4.01	6.83	4.39	1.96	0.93	4.03	8.08						
135	7.27	6.56	3.74	1.27	1.84	3.36	5.33	3.69	1.77	1.04	3.65	6.84						
140	6.55	5.46	3.42	1.34	1.63	2.94	4.32	3.07	1.60	1.12	3.17	5.52						
145	5.81	4.70	3.12	1.42	1.37	2.63	4.06	2.76	1.35	1.21	2.86	4.57						
150	5.10	4.03	2.85	1.57	1.04	2.20	3.81	2.40	1.06	1.42	2.58	4.06						
155	4.42	3.40	2.78	1.70	0.99	1.79	3.09	1.95	0.94	1.60	2.65	3.44						
160	3.64	2.85	2.77	1.84	0.84	1.27	2.80	1.48	0.83	1.78	2.69	2.81						
165	3.04	2.48	2.66	2.00	0.70	1.11	1.98	0.95	0.68	1.92	2.69	2.41						
170	1.59	2.37	2.59	2.13	0.69	0.69	1.22	0.74	0.68	2.08	2.57	2.47						
175	1.28	2.10	2.51	2.22	0.68	0.68	0.97	0.72	0.68	2.19	2.47	2.40						
180	0.71	0.75	2.19	2.24	2.21	2.06	0.71	1.06	1.89	2.30	2.26	2.05						

C Range: 0 - 360DEG
C Interval: 30.0DEG
Test Speed: HIGH
Temperature:25.3DEG
Operators:LPC
Test Date:2021-12-15

γ Range: 0 - 180DEG
γ Interval: 1.0DEG
Test System:EVERFINE GO-2000B_V1 SYSTEM V2.0.362
Humidity:65.0%
Test Distance:9.200m [K=1.0000]
Remarks:

Photometric Data Table [cd]

G/C	0.0	30.0	60.0	90.0	120.0	150.0	180.0	210.0	240.0	270.0
0.0	29.89	29.25	28.86	28.69	28.66	28.58	29.89	29.25	28.86	28.69
3.0	29.93	29.43	28.94	28.66	28.50	28.35	29.80	29.02	28.70	28.68
6.0	29.94	29.53	28.95	28.51	28.27	28.12	29.67	28.76	28.46	28.52
9.0	29.88	29.55	28.94	28.27	27.97	27.86	29.47	28.48	28.15	28.24
12.0	29.74	29.54	28.69	27.86	27.55	27.54	29.24	28.18	27.74	27.80
15.0	29.54	29.48	28.38	27.36	27.07	27.19	28.99	27.81	27.25	27.30
18.0	29.31	29.32	27.98	26.76	26.50	26.75	28.74	27.40	26.68	26.68
21.0	29.10	29.07	27.47	26.09	25.86	26.20	28.49	26.90	26.03	25.91
24.0	28.90	28.77	26.91	25.32	25.15	25.65	28.20	26.34	25.31	25.14
27.0	28.66	28.41	26.28	24.44	24.40	25.01	27.86	25.74	24.54	24.18
30.0	28.36	28.03	25.58	23.50	23.58	24.42	27.46	25.09	23.70	23.22
33.0	28.00	27.60	24.83	22.46	22.70	23.86	27.01	24.48	22.82	22.18
36.0	27.60	27.20	24.04	21.36	21.79	23.26	26.50	23.89	21.90	21.03
39.0	27.16	26.77	23.21	20.21	20.81	22.61	26.00	23.26	20.93	19.81
42.0	26.65	26.29	22.33	19.04	19.80	21.97	25.57	22.58	19.92	18.57
45.0	26.12	25.78	21.44	17.75	18.83	21.25	25.11	21.88	18.91	17.28
48.0	25.62	25.23	20.51	16.49	17.84	20.49	24.62	21.14	17.93	15.87
51.0	25.13	24.64	19.57	15.14	16.83	19.75	24.07	20.37	16.92	14.55
54.0	24.59	24.00	18.62	13.76	15.78	19.02	23.48	19.61	15.87	13.10
57.0	24.01	23.33	17.67	12.43	14.72	18.26	22.85	18.85	14.81	11.73
60.0	23.39	22.63	16.71	11.03	13.66	17.54	22.24	18.07	13.74	10.34
63.0	22.76	22.01	15.72	9.570	12.60	16.81	21.60	17.35	12.67	8.915
66.0	22.13	21.37	14.74	8.168	11.59	16.09	20.98	16.62	11.64	7.468
69.0	21.48	20.67	13.75	6.715	10.61	15.36	20.34	15.88	10.64	6.065
72.0	20.83	19.96	12.77	5.343	9.713	14.64	19.68	15.16	9.716	4.743
75.0	20.17	19.27	11.88	4.022	8.879	13.93	19.03	14.44	8.868	3.411
78.0	19.49	18.56	11.00	2.746	8.099	13.20	18.35	13.69	8.074	2.205
81.0	18.80	17.88	10.17	1.646	7.385	12.51	17.67	12.97	7.350	1.269
84.0	18.07	17.21	9.411	0.8169	6.732	11.81	16.96	12.27	6.667	0.4397
87.0	17.33	16.53	8.762	0.4413	6.154	11.17	16.20	11.59	6.084	0.2767
90.0	16.60	15.85	8.204	0.4238	5.656	10.53	15.43	10.94	5.577	0.2508
93.0	15.82	15.21	7.721	0.4172	5.243	9.964	14.69	10.32	5.180	0.2643
96.0	15.06	14.56	7.314	0.4272	4.856	9.412	13.97	9.757	4.833	0.2777
99.0	14.31	13.20	6.937	0.4424	4.474	8.120	13.12	8.463	4.537	0.2912
102.0	13.32	12.31	6.595	0.5280	3.953	7.749	12.34	8.183	4.067	0.3466
105.0	12.62	11.88	5.836	0.5982	3.203	7.407	11.70	7.816	3.327	0.3761
108.0	11.94	11.40	5.740	0.6585	3.076	7.044	11.04	7.424	3.225	0.4040
111.0	11.29	10.85	5.419	0.7139	2.931	6.356	10.39	6.871	2.954	0.4318
114.0	10.68	10.35	5.231	0.7892	2.719	5.934	9.426	6.550	2.753	0.5323
117.0	10.11	9.879	5.207	0.8646	2.514	5.552	8.934	6.113	2.583	0.5976
120.0	9.591	9.427	5.007	0.9299	2.388	5.211	8.447	5.685	2.457	0.6882
123.0	9.108	8.990	4.654	1.005	2.282	4.859	7.994	5.263	2.325	0.7586
126.0	8.651	8.588	4.403	1.076	2.132	4.502	7.547	4.866	2.125	0.8290
129.0	8.189	8.200	4.157	1.141	2.040	4.125	7.019	4.519	1.990	0.9193
132.0	7.726	7.411	3.931	1.201	1.925	3.768	6.441	4.117	1.884	0.9897
135.0	7.274	6.556	3.745	1.267	1.840	3.356	5.333	3.685	1.769	1.035
138.0	6.826	5.888	3.559	1.317	1.714	3.085	5.027	3.337	1.663	1.091
141.0	6.400	5.265	3.353	1.362	1.584	2.854	4.206	2.956	1.562	1.151
144.0	5.962	4.854	3.177	1.407	1.428	2.673	4.081	2.830	1.412	1.186
147.0	5.525	4.462	3.006	1.453	1.247	2.432	4.020	2.634	1.241	1.261
150.0	5.103	4.029	2.845	1.568	1.041	2.196	3.809	2.403	1.060	1.422
153.0	4.691	3.632	2.775	1.644	0.9147	1.964	3.415	2.137	0.8796	1.528
156.0	4.288	3.286	2.778	1.724	1.030	1.688	2.996	1.875	1.001	1.633
159.0	3.756	2.954	2.774	1.820	1.021	1.356	2.938	1.589	1.043	1.744
162.0	3.449	2.647	2.769	1.915	0.7037	1.040	2.631	1.217	0.6831	1.854
165.0	3.042	2.476	2.659	2.000	0.6987	1.111	1.980	0.9459	0.6822	1.925
168.0	1.721	2.405	2.619	2.076	0.6986	0.9379	1.321	1.080	0.6813	2.015
171.0	1.543	2.342	2.579	2.146	0.6886	0.6902	1.181	0.7383	0.6804	2.111
174.0	1.348	2.151	2.533	2.206	0.6835	0.6801	1.025	0.7260	0.6795	2.156
177.0	1.147	2.055	2.458	2.236	0.6685	0.6734	0.8583	0.7136	0.6786	2.226
180.0	0.7137	0.7539	2.191	2.236	2.211	2.056	0.7086	1.055	1.895	2.302
G/C	300.0	330.0								
0.0	28.66	28.58								
3.0	28.69	28.77								
6.0	28.68	28.91								
9.0	28.59	28.98								
12.0	28.37	28.96								
15.0	28.06	28.95								
18.0	27.65	28.81								
21.0	27.16	28.61								
24.0	26.58	28.37								
27.0	25.96	28.08								
30.0	25.30	27.75								

C Range: 0 - 360DEG
 C Interval: 30.0DEG
 Test Speed: HIGH
 Temperature: 25.3DEG
 Operators: LPC
 Test Date: 2021-12-15

γ Range: 0 - 180DEG
 γ Interval: 1.0DEG
 Test System: EVERFINE GO-2000B_V1 SYSTEM V2.0.362
 Humidity: 65.0%
 Test Distance: 9.200m [K=1.0000]
 Remarks:

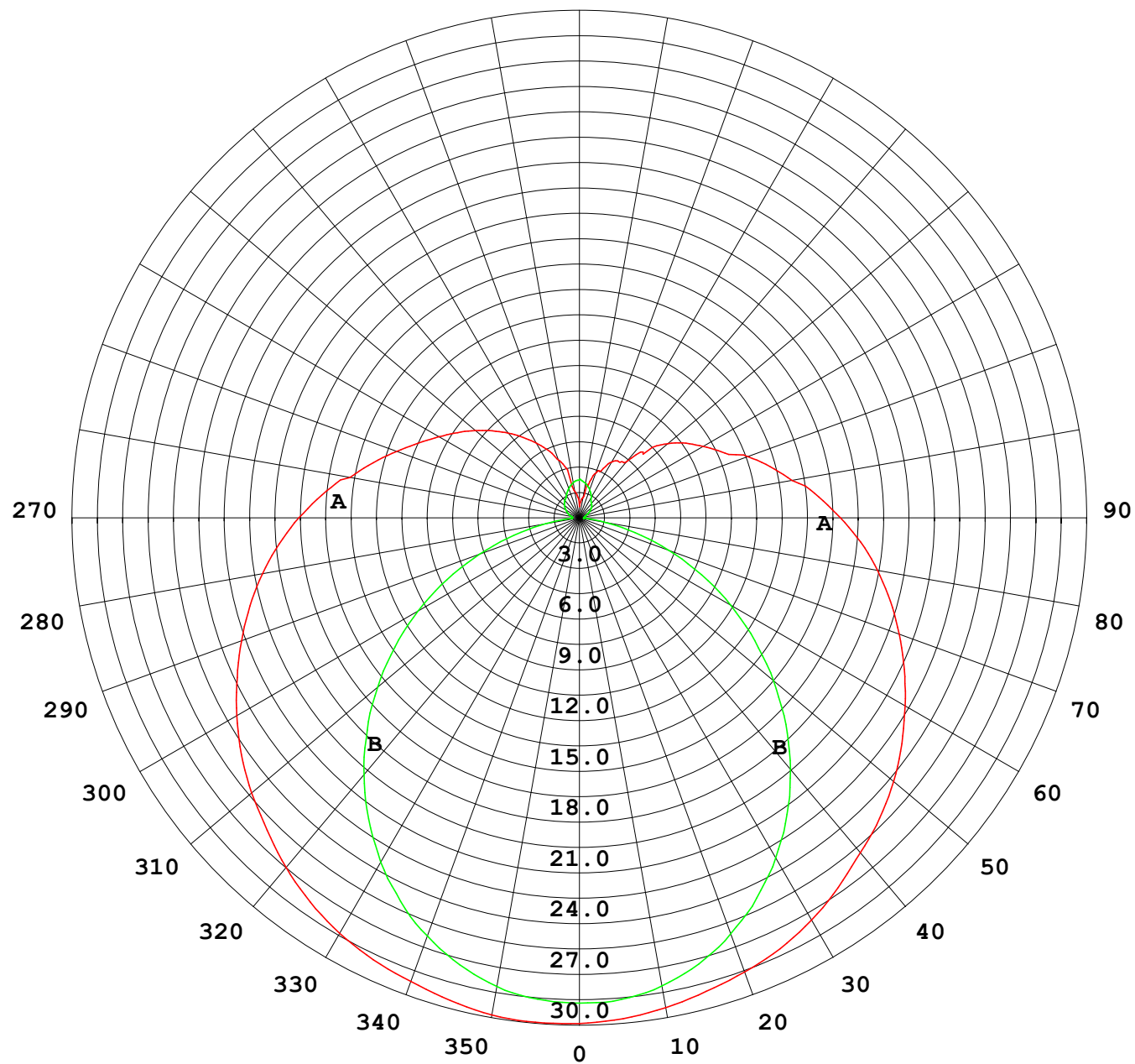
Photometric Data Table [cd]

33.0	24.61	27.34
36.0	23.87	26.94
39.0	23.10	26.53
42.0	22.29	26.10
45.0	21.43	25.62
48.0	20.50	25.10
51.0	19.54	24.56
54.0	18.60	23.98
57.0	17.64	23.34
60.0	16.68	22.66
63.0	15.69	22.01
66.0	14.70	21.41
69.0	13.71	20.76
72.0	12.72	20.10
75.0	11.81	19.43
78.0	10.95	18.75
81.0	10.11	18.08
84.0	9.340	17.42
87.0	8.687	16.76
90.0	8.115	16.12
93.0	7.633	15.48
96.0	7.225	14.85
99.0	6.859	13.36
102.0	6.510	12.64
105.0	5.744	12.23
108.0	5.643	11.70
111.0	5.462	11.22
114.0	5.396	10.73
117.0	4.999	10.23
120.0	4.673	9.716
123.0	4.533	9.254
126.0	4.016	8.836
129.0	4.060	8.365
132.0	3.889	7.516
135.0	3.648	6.842
138.0	3.321	5.878
141.0	3.085	5.399
144.0	2.924	4.776
147.0	2.768	4.278
150.0	2.578	4.061
153.0	2.593	3.730
156.0	2.674	3.298
159.0	2.683	2.911
162.0	2.692	2.649
165.0	2.689	2.413
168.0	2.633	2.477
171.0	2.548	2.463
174.0	2.493	2.448
177.0	2.442	2.307
180.0	2.262	2.051

C Range: 0 - 360DEG
C Interval: 30.0DEG
Test Speed: HIGH
Temperature:25.3DEG
Operators:LPC
Test Date:2021-12-15

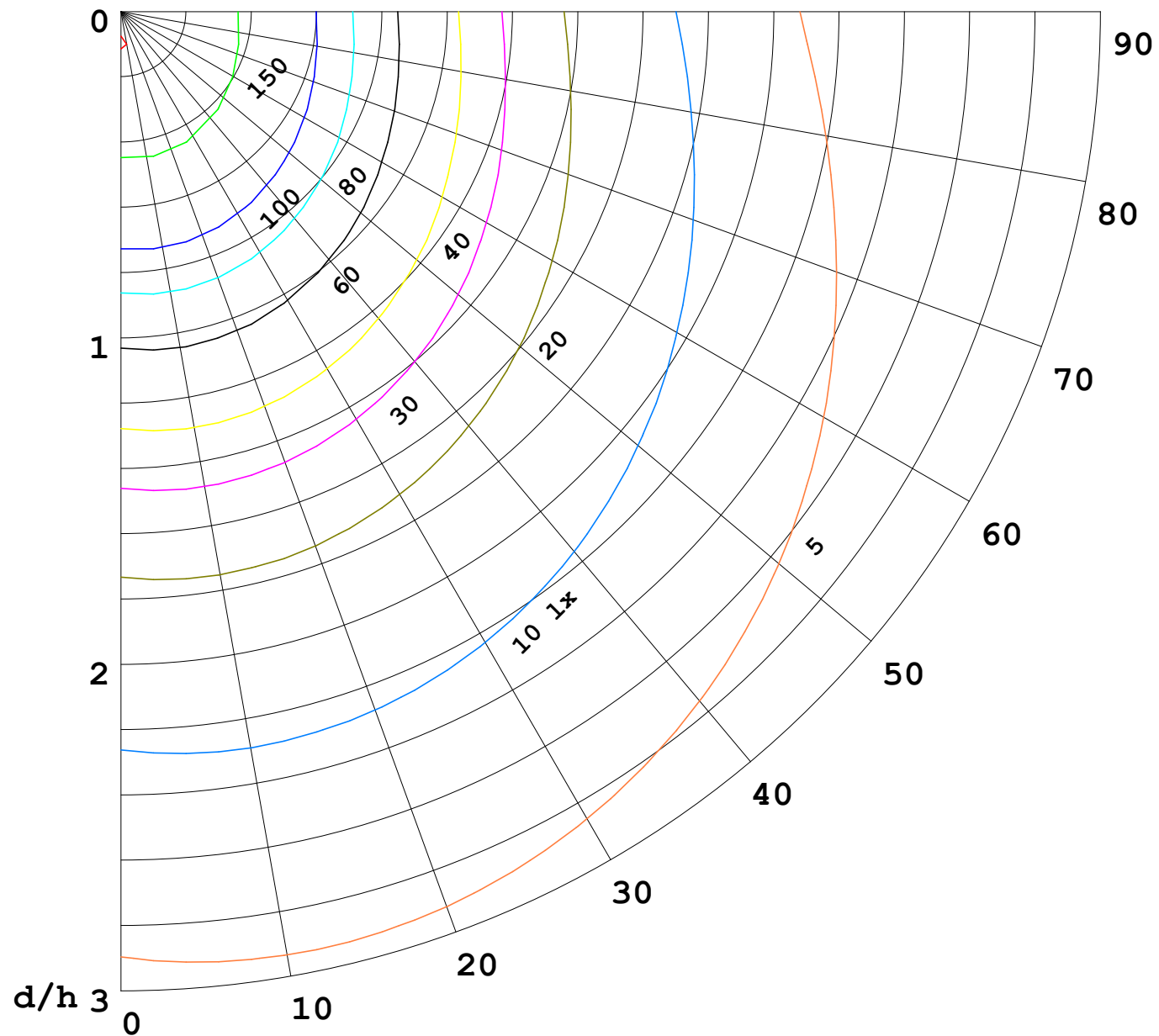
γ Range: 0 - 180DEG
γ Interval: 1.0DEG
Test System:EVERFINE GO-2000B_V1 SYSTEM V2.0.362
Humidity:65.0%
Test Distance:9.200m [K=1.0000]
Remarks:

I (cd)



1000 lm

$\kappa = 1$



F = 5000 lm
 K = 0.7
 Hcc = 0.0 m
 Hfc = 0.0 m
 Eave = 100 lx

	Pcc	Pw	Pfc
—	70	50	30
—	50	30	20

