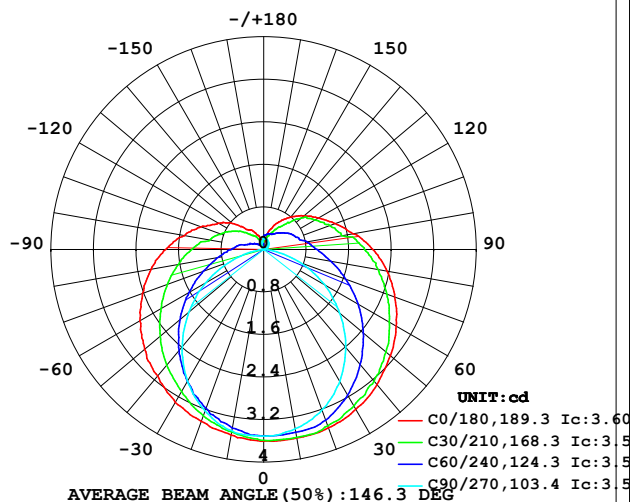


LUMINAIRE PHOTOMETRIC TEST REPORT

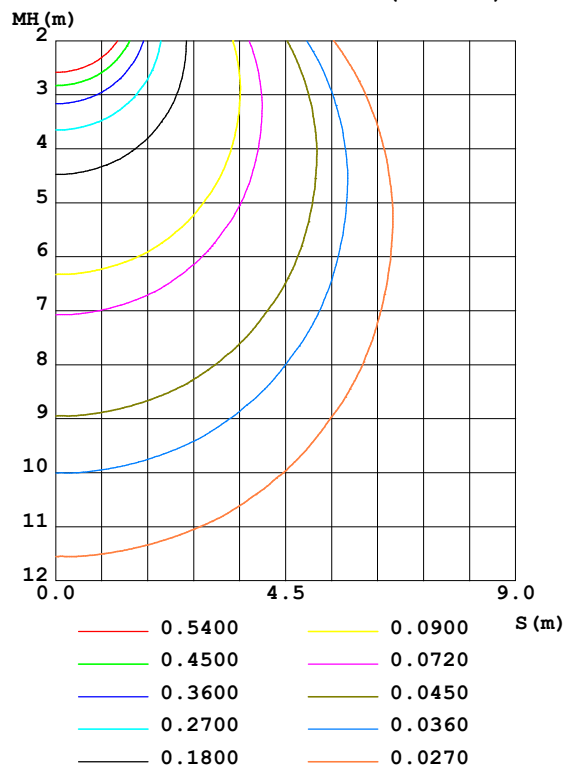
Test:U:24.00V I:0.2116A P:5.078W PF:1.000 Freq:50.00Hz Lamp Flux:17.651x1 lm		
NAME: SF21-24V-5050-56-DMX3-RGB-G	TYPE: 硅胶	WEIGHT:
SPEC.:	DIM.: 28mm*11.5mm	SERIAL No.:2021121502
MFR.: OLYMPIA	SUR.:1*0.016	Shielding Angle:

DATA OF LAMP		PHOTOMETRIC DATA				Eff: 3.48 lm/W
MODEL	5050	I _{max} (cd)	3.608	S/MH (C0/180)	1.38	
NOMINAL POWER (W)	4	LOR (%)	100.0	S/MH (C90/270)	1.22	
RATED VOLTAGE (V)	24	TOTAL FLUX (lm)	17.651	η UP, DN (C0-180)	11.4, 39.2	
NOMINAL FLUX (lm)	17.651	CIE CLASS	SEMI-D.	η UP, DN (C180-360)	10.8, 38.6	
LAMPS INSIDE	1	η up (%)	22.2	CIBSE SHR NOM	1.50	
TEST VOLTAGE (V)	24	η down (%)	77.8	CIBSE SHR MAX	1.55	

LUMINOUS INTENSITY DISTRIBUTION DIAGRAM



C0 PLANE ISOLUX DIAGRAM (UNIT:lx)



C Range: 0 - 360DEG
C Interval: 30.0DEG
Test Speed: HIGH
Temperature: 25.3DEG
Operators: LPC
Test Date: 2021-12-15

γ Range: 0 - 180DEG
γ Interval: 1.0DEG
Test System: EVERFINE GO-2000B_V1 SYSTEM V2.0.362
Humidity: 65.0%
Test Distance: 9.200m [K=1.0000]
Remarks:

ZONAL FLUX DIAGRAM

ZONAL FLUX DIAGRAM:

γ	C0	C45	C90	C135	C180	C225	C270	C315	γ	Φ zone	Φ total	%lum, lamp
10	3.601	3.542	3.422	3.423	3.543	3.448	3.463	3.518	0- 10	0.3352	0.3352	1.9,1.9
20	3.568	3.473	3.211	3.232	3.438	3.252	3.227	3.439	10- 20	0.9706	1.306	7.4,7.4
30	3.468	3.282	2.864	2.960	3.322	2.980	2.865	3.264	20- 30	1.499	2.804	15.9,15.9
40	3.317	3.028	2.397	2.639	3.106	2.656	2.383	3.023	30- 40	1.867	4.671	26.5,26.5
50	3.111	2.724	1.864	2.287	2.925	2.297	1.840	2.741	40- 50	2.055	6.726	38.1,38.1
60	2.880	2.390	1.321	1.910	2.688	1.927	1.262	2.402	50- 60	2.062	8.788	49.8,49.8
70	2.624	2.056	0.7382	1.551	2.432	1.570	0.6688	2.063	60- 70	1.914	10.70	60.6,60.6
80	2.352	1.739	0.1906	1.234	2.146	1.246	0.1562	1.751	70- 80	1.659	12.36	70,70
90	2.056	1.453	0.0151	0.9700	1.844	0.9851	0	1.473	80- 90	1.375	13.74	77.8,77.8
100	1.704	1.163	0.0151	0.7212	1.518	0.7563	0	1.186	90-100	1.133	14.87	84.2,84.2
110	1.433	0.9977	0.0402	0.5502	1.251	0.5730	0	1.018	100-110	0.8753	15.74	89.2,89.2
120	1.191	0.8505	0.0804	0.4346	0.9948	0.4548	0	0.8699	110-120	0.6788	16.42	93,93
130	0.9853	0.7085	0.1006	0.3316	0.7635	0.3393	0.0301	0.6987	120-130	0.5067	16.93	95.9,95.9
140	0.7944	0.5101	0.1326	0.2362	0.4941	0.2374	0.0352	0.4975	130-140	0.3366	17.27	97.8,97.8
150	0.6083	0.3894	0.1558	0.1433	0.4019	0.1584	0.0753	0.3865	140-150	0.2048	17.47	99,99
160	0.4223	0.2996	0.1890	0.0728	0.2812	0.0980	0.1335	0.3030	150-160	0.1152	17.59	99.6,99.6
170	0.1609	0.2468	0.2073	0.0402	0.0603	0.0377	0.1608	0.2484	160-170	0.0516	17.64	99.9,99.9
180	0.0402	0.1231	0.2111	0.1860	0.0352	0.0779	0.2111	0.2035	170-180	0.0134	17.65	100,100
DEG	LUMINOUS INTENSITY:cd									UNIT:lm		

Conical surface Flux(90deg): 5.6865 lm

%lum = 32.2%

%lamp = 32.2%

Conical surface Flux(120deg): 8.7879 lm

%lum = 49.8%

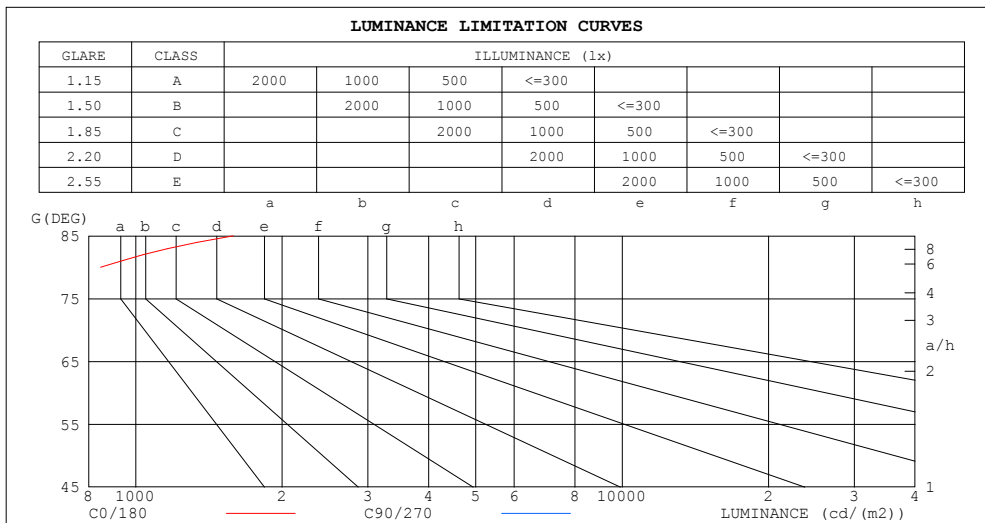
%lamp = 49.8%

C Range: 0 - 360DEG
 C Interval: 30.0DEG
 Test Speed: HIGH
 Temperature:25.3DEG
 Operators:LPC
 Test Date:2021-12-15

γ Range: 0 - 180DEG
 γ Interval: 1.0DEG
 Test System:EVERFINE GO-2000B_V1 SYSTEM V2.0.362
 Humidity:65.0%
 Test Distance:9.200m [K=1.0000]
 Remarks:

LUMINANCE LIMITATION CURVES

Test:U:24.00V I:0.2116A P:5.078W PF:1.000 Freq:50.00Hz Lamp Flux:17.65lx1 lm		
NAME: SF21-24V-5050-56-DMX3-RGB-G	TYPE: 硅胶	WEIGHT:
SPEC.:	DIM.: 28mm*11.5mm	SERIAL No.:2021121502
MFR.: OLYMPIA	SUR.:1*0.016	Shielding Angle:



LUMINANCE cd/(m2)		
G (DEG)	C0/180	C90/270
85	1586	14
80	847	69
75	603	109
70	479	135
65	408	152
60	360	165
55	327	172
50	303	181
45	284	189

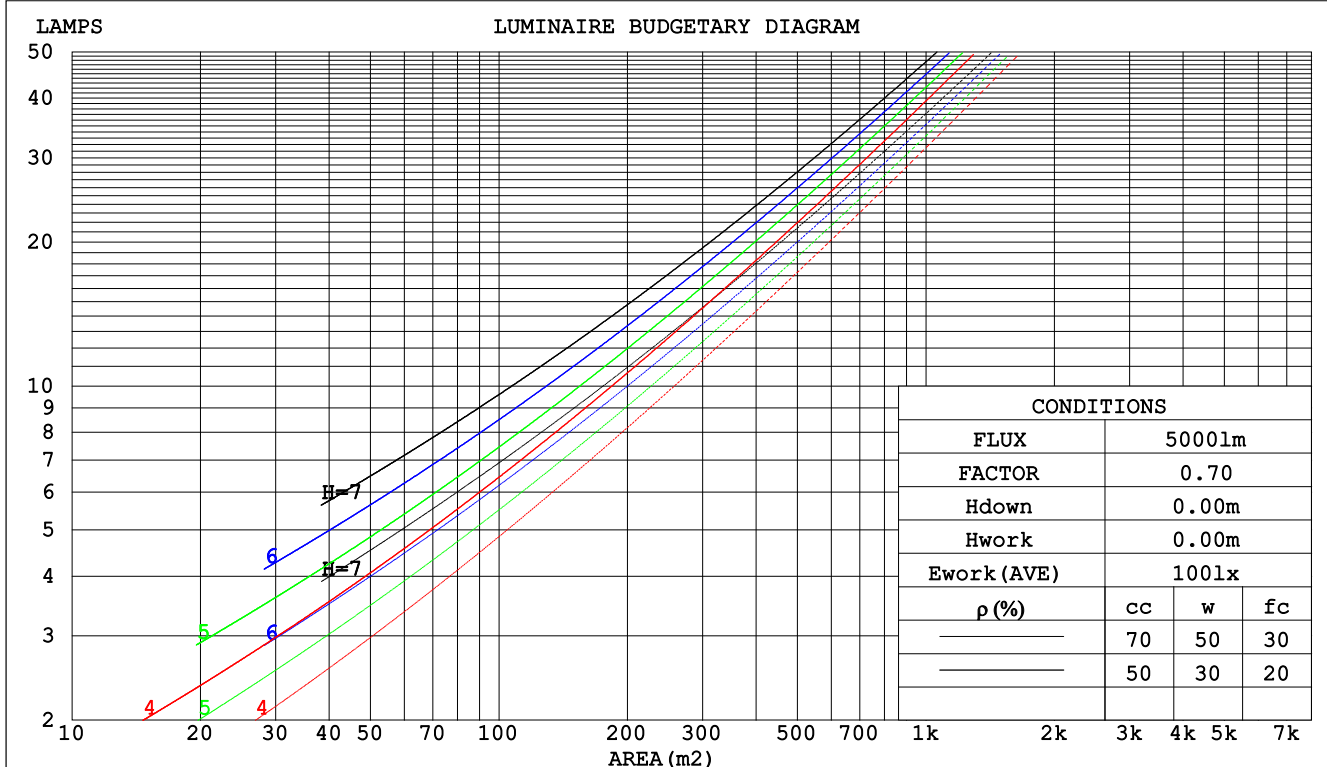
C Range: 0 - 360DEG
C Interval: 30.0DEG
Test Speed: HIGH
Temperature:25.3DEG
Operators:LPC
Test Date:2021-12-15

γ Range: 0 - 180DEG
 γ Interval: 1.0DEG
Test System:EVERFINE GO-2000B_V1 SYSTEM V2.0.362
Humidity:65.0%
Test Distance:9.200m [K=1.0000]
Remarks:

CU AND LUMINAIRE BUDGETARY ESTIMATE DIAGRAM

Test:U:24.00V I:0.2116A P:5.078W PF:1.000 Freq:50.00Hz Lamp Flux:17.65lx1 lm		
NAME: SF21-24V-5050-56-DMX3-RGB-G	TYPE: 硅胶	WEIGHT:
SPEC.:	DIM.: 28mm*11.5mm	SERIAL No.:2021121502
MFR.: OLYMPIA	SUR.:1*0.016	Shielding Angle:

pcc	80%			70%			50%			30%			10%			0
pw	50%	30%	10%	50%	30%	10%	50%	30%	10%	50%	30%	10%	50%	30%	10%	0
pfc	20%			20%			20%			20%			20%			0
RCR	RCR:Room Cavity Ratio						Coefficients of Utilization(CU)									
0.0	1.14	1.14	1.14	1.09	1.09	1.09	.99	.99	.99	.90	.90	.90	.82	.82	.82	.78
1.0	.94	.89	.84	.90	.85	.81	.82	.78	.74	.74	.71	.68	.67	.64	.62	.58
2.0	.81	.73	.66	.77	.70	.64	.70	.64	.59	.63	.58	.54	.57	.53	.50	.46
3.0	.70	.61	.54	.67	.58	.52	.60	.54	.48	.55	.49	.44	.49	.45	.41	.38
4.0	.61	.52	.45	.59	.50	.43	.53	.46	.40	.48	.42	.37	.44	.39	.34	.31
5.0	.54	.45	.38	.52	.43	.37	.47	.40	.34	.43	.37	.32	.39	.34	.30	.27
6.0	.49	.39	.33	.47	.38	.32	.42	.35	.30	.39	.32	.28	.35	.30	.26	.23
7.0	.44	.35	.29	.42	.34	.28	.38	.31	.26	.35	.29	.24	.32	.27	.23	.20
8.0	.40	.31	.25	.38	.30	.24	.35	.28	.23	.32	.26	.22	.29	.24	.20	.18
9.0	.36	.28	.22	.35	.27	.22	.32	.25	.21	.30	.24	.19	.27	.22	.18	.16
10.0	.33	.25	.20	.32	.25	.20	.30	.23	.18	.27	.21	.17	.25	.20	.16	.14



C Range: 0 - 360DEG
 C Interval: 30.0DEG
 Test Speed: HIGH
 Temperature:25.3DEG
 Operators:LPC
 Test Date:2021-12-15

γ Range: 0 - 180DEG
 γ Interval: 1.0DEG
 Test System:EVERFINE GO-2000B_V1 SYSTEM V2.0.362
 Humidity:65.0%
 Test Distance:9.200m [K=1.0000]
 Remarks:

WEC AND CCEC

Test:U:24.00V I:0.2116A P:5.078W PF:1.000 Freq:50.00Hz Lamp Flux:17.65lx1 lm		
NAME: SF21-24V-5050-56-DMX3-RGB-G	TYPE: 硅胶	WEIGHT:
SPEC.:	DIM.: 28mm*11.5mm	SERIAL No.:2021121502
MFR.: OLYMPIA	SUR.:1*0.016	Shielding Angle:

pcc	80%			70%			50%			30%			10%			0	
pw	50%	30%	10%	50%	30%	10%	50%	30%	10%	50%	30%	10%	50%	30%	10%	0	
pfc	20%			20%			20%			20%			20%			0	
RCR	RCR:Room Cavity Ratio						Wall Exitance Coefficients(WEC)										
0.0																	
1.0	.388	.221	.070	.374	.213	.068	.348	.200	.064	.324	.187	.060	.302	.175	.056		
2.0	.334	.183	.056	.321	.177	.055	.298	.165	.051	.276	.155	.048	.255	.144	.046		
3.0	.296	.157	.047	.284	.152	.046	.263	.142	.043	.243	.133	.041	.225	.124	.038		
4.0	.266	.138	.041	.256	.134	.040	.236	.125	.037	.218	.117	.035	.201	.109	.033		
5.0	.241	.123	.036	.232	.119	.035	.214	.112	.033	.198	.104	.031	.182	.097	.029		
6.0	.221	.111	.032	.213	.107	.031	.196	.101	.029	.181	.094	.028	.167	.088	.026		
7.0	.204	.101	.029	.196	.098	.028	.181	.092	.026	.167	.086	.025	.154	.080	.024		
8.0	.189	.092	.026	.182	.089	.025	.168	.084	.024	.155	.079	.023	.143	.073	.021		
9.0	.176	.085	.024	.169	.083	.023	.157	.077	.022	.145	.073	.021	.134	.068	.020		
10.0	.165	.079	.022	.159	.077	.021	.147	.072	.020	.136	.067	.019	.125	.063	.018		

pcc	80%			70%			50%			30%			10%			0
pw	50%	30%	10%	50%	30%	10%	50%	30%	10%	50%	30%	10%	50%	30%	10%	0
pfc	20%			20%			20%			20%			20%			0
RCR	RCR:Room Cavity Ratio						Ceiling Cavity Exitance Coefficients(CCEC)									
0.0	.359	.359	.359	.307	.307	.307	.210	.210	.210	.120	.120	.120	.039	.039	.039	
1.0	.356	.326	.299	.305	.280	.257	.208	.192	.178	.120	.111	.103	.038	.036	.033	
2.0	.349	.303	.264	.299	.261	.229	.205	.181	.159	.118	.105	.093	.038	.034	.030	
3.0	.342	.287	.243	.293	.248	.211	.201	.172	.148	.116	.100	.087	.037	.033	.029	
4.0	.334	.275	.229	.287	.237	.199	.197	.165	.140	.114	.097	.083	.037	.032	.027	
5.0	.327	.265	.219	.280	.229	.191	.193	.160	.135	.112	.094	.080	.036	.031	.026	
6.0	.319	.257	.212	.274	.223	.185	.189	.156	.131	.110	.092	.078	.035	.030	.026	
7.0	.312	.250	.207	.268	.217	.181	.185	.152	.128	.108	.090	.076	.035	.029	.025	
8.0	.305	.245	.203	.263	.212	.177	.182	.149	.126	.106	.088	.075	.034	.029	.025	
9.0	.299	.240	.200	.258	.208	.175	.179	.147	.124	.104	.087	.074	.034	.028	.025	
10.0	.293	.236	.198	.253	.205	.173	.175	.144	.123	.102	.085	.073	.033	.028	.024	

C Range: 0 - 360DEG
 C Interval: 30.0DEG
 Test Speed: HIGH
 Temperature:25.3DEG
 Operators:LPC
 Test Date:2021-12-15

γ Range: 0 - 180DEG
 γ Interval: 1.0DEG
 Test System:EVERFINE GO-2000B_V1 SYSTEM V2.0.362
 Humidity:65.0%
 Test Distance:9.200m [K=1.0000]
 Remarks:

UGR(Unified Glare Rating) Table

Test:U:24.00V I:0.2116A P:5.078W PF:1.000 Freq:50.00Hz Lamp Flux:17.65lx1 lm										
NAME: SF21-24V-5050-56-DMX3-RGB-G					TYPE: 硅胶			WEIGHT:		
SPEC.:					DIM.: 28mm*11.5mm			SERIAL No.:2021121502		
MFR.: OLYMPIA					SUR.:1*0.016			Shielding Angle:		
ceiling/cavity	0.7	0.7	0.5	0.5	0.3	0.7	0.7	0.5	0.5	0.3
walls	0.5	0.3	0.5	0.3	0.3	0.5	0.3	0.5	0.3	0.3
working plane	0.2	0.2	0.2	0.2	0.2	0.2	0.2	0.2	0.2	0.2
Room dimensions	Viewed crosswise					Viewed endwise				
x = 2H y = 2H	22.5	23.8	23.0	24.3	25.0	19.7	21.0	20.2	21.6	22.2
3H	25.3	26.5	25.9	27.1	27.8	21.1	22.3	21.7	22.9	23.6
4H	26.9	28.0	27.5	28.6	29.3	21.6	22.8	22.2	23.4	24.1
6H	28.6	29.7	29.2	30.3	31.1	21.9	23.0	22.6	23.7	24.4
8H	29.6	30.6	30.2	31.3	32.0	22.0	23.0	22.6	23.7	24.4
12H	30.7	31.7	31.4	32.4	33.1	22.0	23.0	22.6	23.6	24.4
4H 2H	23.0	24.2	23.7	24.8	25.5	21.1	22.3	21.7	22.9	23.6
3H	26.2	27.2	26.8	27.8	28.6	22.9	23.9	23.6	24.6	25.3
4H	27.9	28.9	28.6	29.5	30.3	23.7	24.6	24.4	25.3	26.1
6H	29.9	30.7	30.6	31.4	32.3	24.3	25.1	25.0	25.8	26.7
8H	31.0	31.8	31.7	32.5	33.3	24.5	25.3	25.2	26.0	26.8
12H	32.2	33.0	33.0	33.7	34.5	24.6	25.3	25.3	26.0	26.9
8H 4H	28.3	29.1	29.0	29.8	30.6	25.1	25.9	25.8	26.6	27.5
6H	30.6	31.3	31.4	32.0	32.9	26.2	26.9	27.0	27.6	28.5
8H	32.0	32.5	32.7	33.3	34.2	26.7	27.3	27.4	28.0	28.9
12H	33.5	34.0	34.2	34.8	35.7	27.0	27.6	27.8	28.3	29.3
12H 4H	28.3	29.1	29.1	29.8	30.6	25.6	26.3	26.3	27.0	27.9
6H	30.8	31.3	31.5	32.1	33.0	27.0	27.6	27.7	28.3	29.2
8H	32.2	32.7	33.0	33.5	34.4	27.7	28.2	28.4	29.0	29.9
Variations with the observer position at spacings:										
S = 1.0H	+ 0.1 / - 0.1					+ 0.1 / - 0.1				
1.5H	+ 0.2 / - 0.3					+ 0.2 / - 0.3				
2.0H	+ 0.2 / - 0.3					+ 0.3 / - 0.4				

CIE Pub.117, 17.65 lm Total Lamp Luminous Flux Correct (8log(F/F0) = -14.0)

C Range: 0 - 360DEG
C Interval: 30.0DEG
Test Speed: HIGH
Temperature:25.3DEG
Operators:LPC
Test Date:2021-12-15

γ Range: 0 - 180DEG
γ Interval: 1.0DEG
Test System:EVERFINE GO-2000B_V1 SYSTEM V2.0.362
Humidity:65.0%
Test Distance:9.200m [K=1.0000]
Remarks:

UTILIZATION FACTORS TABLE

Test:U:24.00V I:0.2116A P:5.078W PF:1.000 Freq:50.00Hz Lamp Flux:17.651x1 lm		
NAME: SF21-24V-5050-56-DMX3-RGB-G	TYPE: 硅胶	WEIGHT:
SPEC.:	DIM.: 28mm*11.5mm	SERIAL No.:2021121502
MFR.: OLYMPIA	SUR.:1*0.016	Shielding Angle:

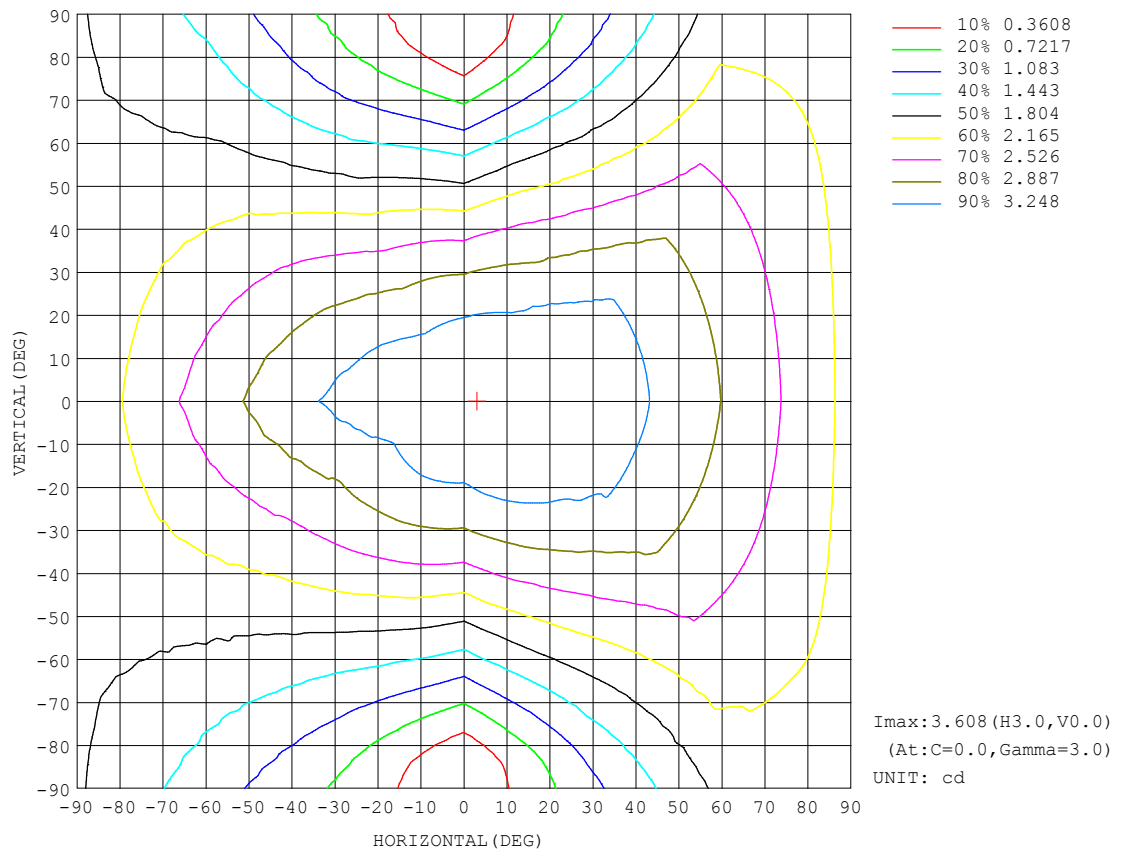
REFLECTANCE										
Ceiling	0.8	0.8	0.8	0.7	0.7	0.7	0.5	0.5	0.5	0
Walls	0.7	0.5	0.3	0.7	0.5	0.3	0.7	0.5	0.3	0
Working plane	0.2	0.2	0.2	0.2	0.2	0.2	0.2	0.2	0.2	0
ROOM INDEX	UTILIZATION FACTORS (PERCENT) $k(RI) \times RCR = 5$									
$k = 0.60$	46	34	27	45	33	26	43	32	26	19
0.80	55	42	34	54	41	34	51	40	33	25
1.00	63	50	41	61	49	41	57	49	39	30
1.25	70	57	48	67	56	47	63	53	46	35
1.50	75	63	54	72	61	53	67	57	50	39
2.00	82	71	63	79	69	61	73	64	58	45
2.50	87	76	68	83	74	66	76	69	62	49
3.00	91	81	73	87	78	71	79	73	67	52
4.00	95	87	81	91	84	78	83	77	72	57
5.00	99	91	85	94	88	82	86	81	76	60
ROOM INDEX	UF (total)									Direct
According to DIN EN 13032-2 2004			Suspended					SHRNOM = 1.25		

C Range: 0 - 360DEG
 C Interval: 30.0DEG
 Test Speed: HIGH
 Temperature: 25.3DEG
 Operators: LPC
 Test Date: 2021-12-15

γ Range: 0 - 180DEG
 γ Interval: 1.0DEG
 Test System: EVERFINE GO-2000B_V1 SYSTEM V2.0.362
 Humidity: 65.0%
 Test Distance: 9.200m [K=1.0000]
 Remarks:

ISOCANDELA DIAGRAM

Test:U:24.00V I:0.2116A P:5.078W PF:1.000 Freq:50.00Hz Lamp Flux:17.65lx1 lm		
NAME: SF21-24V-5050-56-DMX3-RGB-G	TYPE: 硅胶	WEIGHT:
SPEC.:	DIM.: 28mm*11.5mm	SERIAL No.:2021121502
MFR.: OLYMPIA	SUR.:1*0.016	Shielding Angle:

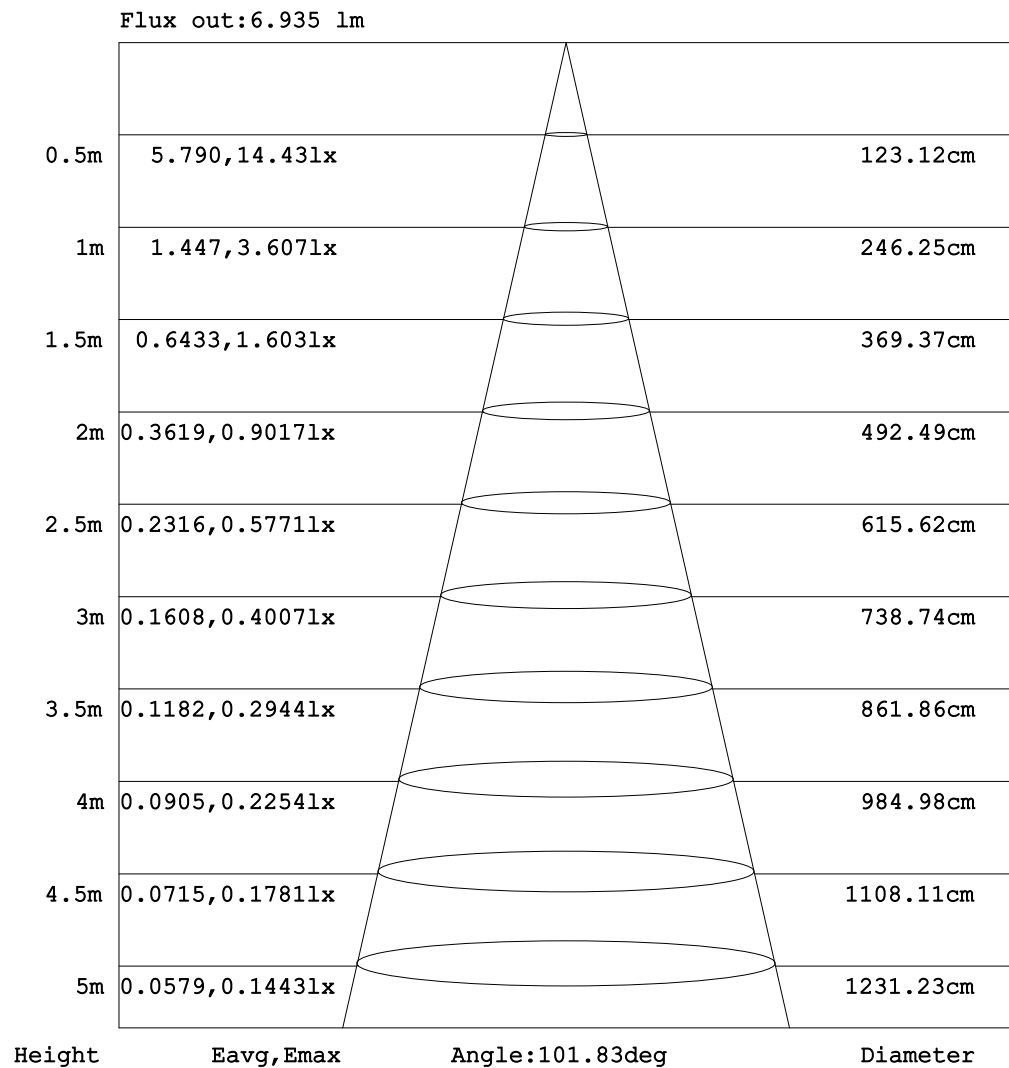


C Range: 0 - 360DEG
C Interval: 30.0DEG
Test Speed: HIGH
Temperature: 25.3DEG
Operators: LPC
Test Date: 2021-12-15

γ Range: 0 - 180DEG
 γ Interval: 1.0DEG
Test System: EVERFINE GO-2000B_V1 SYSTEM V2.0.362
Humidity: 65.0%
Test Distance: 9.200m [K=1.0000]
Remarks:

AAI Figure

Test:U:24.00V I:0.2116A P:5.078W PF:1.000 Freq:50.00Hz Lamp Flux:17.65lx1 lm		
NAME: SF21-24V-5050-56-DMX3-RGB-G	TYPE: 硅胶	WEIGHT:
SPEC.:	DIM.: 28mm*11.5mm	SERIAL No.:2021121502
MFR.: OLYMPIA	SUR.:1*0.016	Shielding Angle:



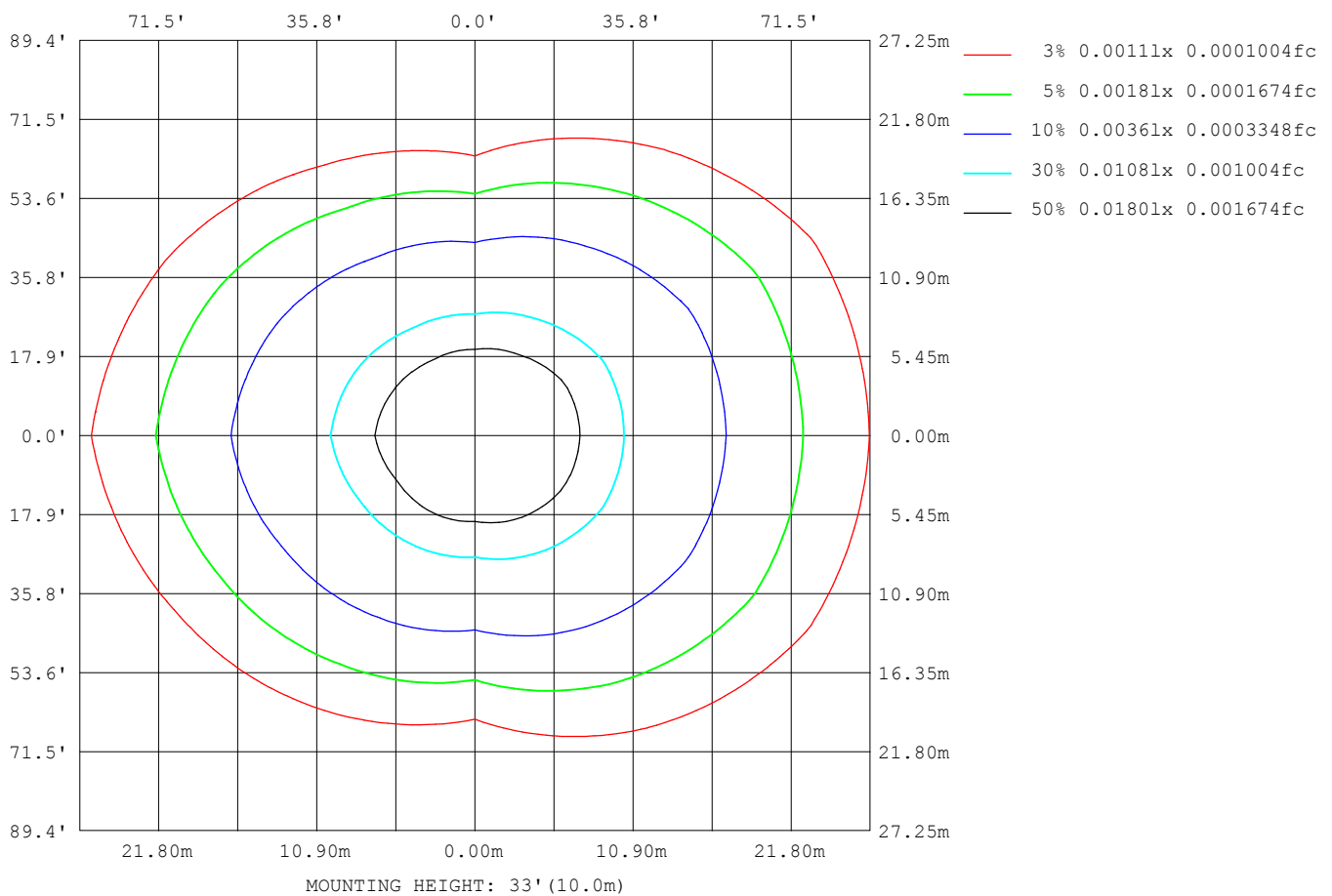
Note: The Curves indicate the illuminated area and the average illumination when the luminaire is at different distance.

C Range: 0 - 360DEG
 C Interval: 30.0DEG
 Test Speed: HIGH
 Temperature: 25.3DEG
 Operators: LPC
 Test Date: 2021-12-15

γ Range: 0 - 180DEG
 γ Interval: 1.0DEG
 Test System: EVERFINE GO-2000B_V1 SYSTEM V2.0.362
 Humidity: 65.0%
 Test Distance: 9.200m [K=1.0000]
 Remarks:

ISOLUX DIAGRAM

Test:U:24.00V I:0.2116A P:5.078W PF:1.000 Freq:50.00Hz Lamp Flux:17.65lx1 lm		
NAME: SF21-24V-5050-56-DMX3-RGB-G	TYPE: 硅胶	WEIGHT:
SPEC.:	DIM.: 28mm*11.5mm	SERIAL No.:2021121502
MFR.: OLYMPIA	SUR.:1*0.016	Shielding Angle:



C Range: 0 - 360DEG
C Interval: 30.0DEG
Test Speed: HIGH
Temperature:25.3DEG
Operators:LPC
Test Date:2021-12-15

γ Range: 0 - 180DEG
 γ Interval: 1.0DEG
Test System:EVERFINE GO-2000B_V1 SYSTEM V2.0.362
Humidity:65.0%
Test Distance:9.200m [K=1.0000]
Remarks:

LED Avg.L Report

Test:U:24.00V I:0.2116A P:5.078W PF:1.000 Freq:50.00Hz Lamp Flux:17.65lx1 lm		
NAME: SF21-24V-5050-56-DMX3-RGB-G	TYPE:硅胶	WEIGHT:
SPEC.:	DIM.: 28mm*11.5mm	SERIAL No.:2021121502
MFR.: OLYMPIA	SUR.:1*0.016	Shielding Angle:

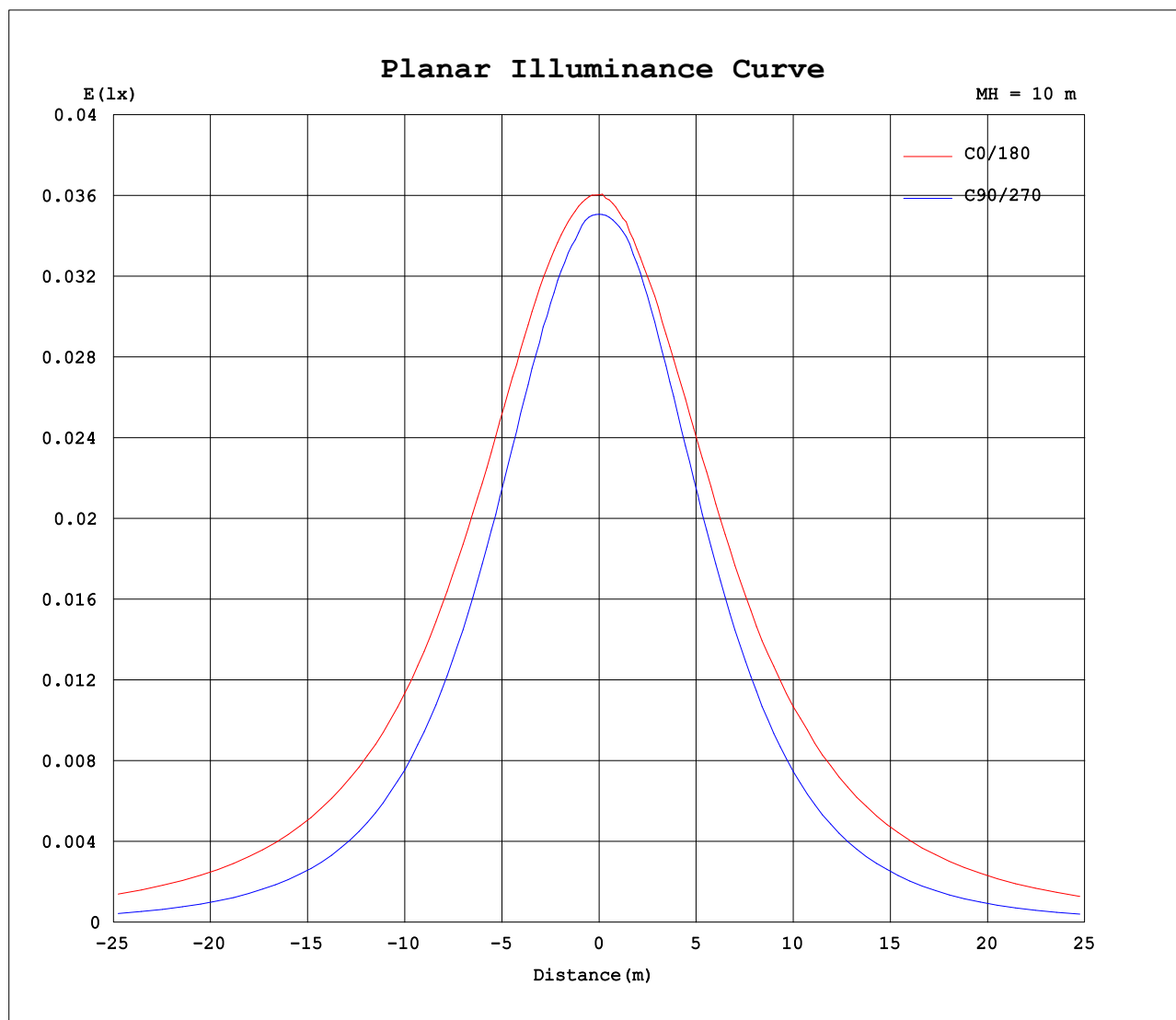
AvgL	cd/m2
L_0~180 (65) av	392
L_0~180 (75) av	578
L_0~180 (85) av	1512
L_90~270 (65) av	147
L_90~270 (75) av	102
L_90~270 (85) av	7
L_45 (65) av	297
L_45 (75) av	405
L_45 (85) av	999

Standard: GB/T 29293-2012

C Range: 0 - 360DEG
C Interval: 30.0DEG
Test Speed: HIGH
Temperature:25.3DEG
Operators:LPC
Test Date:2021-12-15

γ Range: 0 - 180DEG
γ Interval: 1.0DEG
Test System:EVERFINE GO-2000B_V1 SYSTEM V2.0.362
Humidity:65.0%
Test Distance:9.200m [K=1.0000]
Remarks:

Planar Illuminance Curve



C Range: 0 - 360DEG
C Interval: 30.0DEG
Test Speed: HIGH
Temperature: 25.3DEG
Operators: LPC
Test Date: 2021-12-15

γ Range: 0 - 180DEG
 γ Interval: 1.0DEG
Test System: EVERFINE GO-2000B_V1 SYSTEM V2.0.362
Humidity: 65.0%
Test Distance: 9.200m [K=1.0000]
Remarks:

LUMINOUS DISTRIBUTION INTENSITY DATA

Test:U:24.00V I:0.2116A P:5.078W PF:1.000 Freq:50.00Hz Lamp Flux:17.651x1 lm		
NAME: SF21-24V-5050-56-DMX3-RGB-G	TYPE: 硅胶	WEIGHT:
SPEC.:	DIM.: 28mm*11.5mm	SERIAL No.:2021121502
MFR.: OLYMPIA	SUR.:1*0.016	Shielding Angle:

Table--1

UNIT: cd

C (DEG) γ (DEG)	0	30	60	90	120	150	180	210	240	270	300	330						
0	3.60	3.59	3.50	3.51	3.51	3.49	3.60	3.59	3.50	3.51	3.51	3.49						
5	3.61	3.59	3.51	3.49	3.50	3.43	3.58	3.55	3.48	3.50	3.49	3.52						
10	3.60	3.59	3.49	3.42	3.45	3.40	3.54	3.48	3.41	3.46	3.49	3.55						
15	3.60	3.59	3.48	3.33	3.35	3.34	3.50	3.41	3.30	3.37	3.42	3.55						
20	3.57	3.53	3.42	3.21	3.24	3.22	3.44	3.33	3.18	3.23	3.34	3.54						
25	3.53	3.48	3.30	3.06	3.11	3.11	3.38	3.22	3.04	3.07	3.20	3.50						
30	3.47	3.40	3.16	2.86	2.94	2.99	3.32	3.09	2.87	2.87	3.09	3.44						
35	3.41	3.33	3.00	2.64	2.75	2.85	3.22	2.96	2.68	2.63	2.92	3.36						
40	3.32	3.23	2.82	2.40	2.55	2.73	3.11	2.84	2.47	2.38	2.77	3.28						
45	3.21	3.12	2.63	2.14	2.31	2.59	3.03	2.70	2.27	2.12	2.60	3.18						
50	3.11	3.01	2.44	1.86	2.13	2.44	2.92	2.54	2.06	1.84	2.41	3.08						
55	3.00	2.87	2.25	1.58	1.91	2.28	2.80	2.39	1.84	1.55	2.20	2.95						
60	2.88	2.73	2.05	1.32	1.69	2.13	2.69	2.23	1.62	1.26	1.99	2.81						
65	2.76	2.61	1.84	1.02	1.49	1.96	2.55	2.08	1.43	0.96	1.78	2.68						
70	2.62	2.47	1.64	0.74	1.28	1.82	2.43	1.93	1.21	0.67	1.58	2.55						
75	2.50	2.32	1.47	0.45	1.11	1.67	2.29	1.78	1.02	0.39	1.40	2.41						
80	2.35	2.19	1.29	0.19	0.95	1.52	2.15	1.63	0.86	0.16	1.23	2.27						
85	2.21	2.05	1.13	0.02	0.81	1.40	2.00	1.50	0.74	0.00	1.08	2.14						
90	2.06	1.90	1.01	0.02	0.69	1.25	1.84	1.36	0.61	0.00	0.94	2.01						
95	1.90	1.77	0.90	0.02	0.60	1.15	1.70	1.23	0.54	0.00	0.85	1.86						
100	1.70	1.49	0.83	0.02	0.52	0.92	1.52	1.04	0.48	0.00	0.77	1.60						
105	1.57	1.42	0.71	0.03	0.37	0.85	1.41	0.96	0.37	0.00	0.68	1.53						
110	1.43	1.32	0.67	0.04	0.34	0.76	1.25	0.85	0.30	0.00	0.62	1.42						
115	1.31	1.21	0.63	0.06	0.30	0.65	1.10	0.78	0.26	0.00	0.55	1.32						
120	1.19	1.11	0.59	0.08	0.27	0.60	0.99	0.69	0.22	0.00	0.52	1.22						
125	1.09	1.02	0.54	0.09	0.25	0.52	0.88	0.60	0.19	0.00	0.47	1.11						
130	0.99	0.92	0.49	0.10	0.22	0.44	0.76	0.52	0.16	0.03	0.39	1.01						
135	0.89	0.76	0.45	0.12	0.19	0.36	0.61	0.43	0.14	0.04	0.37	0.84						
140	0.79	0.61	0.41	0.13	0.17	0.30	0.49	0.35	0.12	0.04	0.32	0.67						
145	0.70	0.52	0.37	0.15	0.15	0.24	0.45	0.32	0.08	0.06	0.29	0.56						
150	0.61	0.44	0.34	0.16	0.10	0.19	0.40	0.27	0.05	0.08	0.29	0.49						
155	0.52	0.36	0.32	0.18	0.08	0.14	0.31	0.21	0.05	0.12	0.28	0.40						
160	0.42	0.28	0.32	0.19	0.08	0.07	0.28	0.16	0.04	0.13	0.28	0.33						
165	0.34	0.24	0.30	0.21	0.04	0.06	0.18	0.08	0.04	0.14	0.28	0.27						
170	0.16	0.21	0.28	0.21	0.04	0.04	0.06	0.04	0.04	0.16	0.24	0.26						
175	0.12	0.20	0.27	0.21	0.04	0.04	0.05	0.04	0.04	0.20	0.23	0.25						
180	0.04	0.04	0.21	0.21	0.20	0.18	0.04	0.03	0.13	0.21	0.22	0.19						

C Range: 0 - 360DEG
C Interval: 30.0DEG
Test Speed: HIGH
Temperature:25.3DEG
Operators:LPC
Test Date:2021-12-15

γ Range: 0 - 180DEG
γ Interval: 1.0DEG
Test System:EVERFINE GO-2000B_V1 SYSTEM V2.0.362
Humidity:65.0%
Test Distance:9.200m [K=1.0000]
Remarks:

Photometric Data Table [cd]

G/C	0.0	30.0	60.0	90.0	120.0	150.0	180.0	210.0	240.0	270.0
0.0	3.604	3.588	3.503	3.508	3.508	3.493	3.604	3.588	3.503	3.508
3.0	3.608	3.593	3.508	3.508	3.508	3.463	3.593	3.563	3.498	3.508
6.0	3.605	3.592	3.503	3.473	3.493	3.426	3.573	3.533	3.462	3.502
9.0	3.602	3.591	3.495	3.442	3.458	3.404	3.548	3.498	3.412	3.488
12.0	3.599	3.590	3.488	3.397	3.413	3.362	3.518	3.463	3.357	3.438
15.0	3.596	3.589	3.480	3.332	3.352	3.337	3.498	3.413	3.297	3.372
18.0	3.583	3.563	3.453	3.267	3.297	3.267	3.458	3.367	3.251	3.287
21.0	3.563	3.513	3.398	3.186	3.217	3.201	3.427	3.302	3.156	3.202
24.0	3.543	3.503	3.322	3.091	3.131	3.136	3.402	3.242	3.060	3.096
27.0	3.513	3.432	3.242	2.980	3.046	3.055	3.352	3.166	2.965	2.986
30.0	3.468	3.402	3.162	2.864	2.936	2.985	3.322	3.086	2.874	2.865
33.0	3.438	3.342	3.066	2.729	2.830	2.920	3.257	3.011	2.769	2.729
36.0	3.393	3.292	2.971	2.598	2.719	2.849	3.196	2.935	2.638	2.589
39.0	3.337	3.256	2.860	2.447	2.594	2.764	3.126	2.865	2.527	2.443
42.0	3.272	3.186	2.755	2.301	2.463	2.688	3.091	2.780	2.392	2.282
45.0	3.212	3.116	2.634	2.136	2.308	2.593	3.025	2.699	2.266	2.116
48.0	3.146	3.050	2.523	1.980	2.212	2.487	2.965	2.609	2.140	1.950
51.0	3.091	2.975	2.408	1.814	2.086	2.397	2.895	2.513	2.015	1.780
54.0	3.026	2.910	2.287	1.643	1.956	2.302	2.834	2.418	1.884	1.604
57.0	2.960	2.814	2.167	1.487	1.820	2.211	2.764	2.322	1.754	1.443
60.0	2.880	2.729	2.051	1.321	1.689	2.130	2.688	2.232	1.623	1.262
63.0	2.805	2.648	1.930	1.145	1.573	2.040	2.613	2.141	1.497	1.081
66.0	2.734	2.583	1.800	0.9695	1.443	1.945	2.533	2.051	1.382	0.9001
69.0	2.654	2.493	1.684	0.7936	1.322	1.849	2.447	1.955	1.246	0.7242
72.0	2.579	2.407	1.573	0.6176	1.217	1.759	2.367	1.870	1.130	0.5584
75.0	2.498	2.317	1.468	0.4519	1.106	1.673	2.286	1.779	1.025	0.3925
78.0	2.418	2.231	1.352	0.2962	1.006	1.578	2.206	1.689	0.9246	0.2466
81.0	2.332	2.151	1.247	0.1504	0.9150	1.498	2.125	1.603	0.8389	0.1209
84.0	2.242	2.065	1.156	0.0350	0.8247	1.412	2.045	1.523	0.7637	0.0203
87.0	2.151	1.985	1.076	0.0151	0.7492	1.332	1.945	1.443	0.6834	0
90.0	2.056	1.900	1.005	0.0151	0.6887	1.251	1.844	1.357	0.6130	0
93.0	1.960	1.819	0.9400	0.0151	0.6284	1.181	1.759	1.282	0.5628	0
96.0	1.865	1.749	0.8947	0.0151	0.5782	1.116	1.668	1.211	0.5226	0
99.0	1.769	1.572	0.8446	0.0151	0.5328	0.9447	1.558	1.046	0.4924	0
102.0	1.644	1.482	0.8043	0.0201	0.4678	0.9044	1.477	1.005	0.4366	0
105.0	1.573	1.417	0.7088	0.0251	0.3721	0.8543	1.407	0.9600	0.3666	0
108.0	1.483	1.357	0.6986	0.0302	0.3469	0.8287	1.311	0.9048	0.3164	0
111.0	1.407	1.311	0.6536	0.0403	0.3418	0.7185	1.226	0.8444	0.2864	0
114.0	1.327	1.246	0.6339	0.0503	0.3066	0.6783	1.111	0.7992	0.2861	0
117.0	1.257	1.171	0.6122	0.0704	0.2816	0.6181	1.045	0.7440	0.2312	0
120.0	1.191	1.111	0.5905	0.0804	0.2714	0.5978	0.9948	0.6887	0.2210	0
123.0	1.121	1.070	0.5580	0.0854	0.2563	0.5326	0.9247	0.6334	0.2109	0
126.0	1.066	1.010	0.5279	0.1005	0.2363	0.4874	0.8592	0.5831	0.1858	0
129.0	1.005	0.9546	0.4976	0.1005	0.2212	0.4373	0.7838	0.5379	0.1608	0.0251
132.0	0.9551	0.8593	0.4725	0.1156	0.1941	0.3869	0.7084	0.4826	0.1457	0.0302
135.0	0.8898	0.7584	0.4473	0.1169	0.1875	0.3617	0.6081	0.4323	0.1356	0.0351
138.0	0.8344	0.6881	0.4272	0.1263	0.1810	0.3015	0.5473	0.3920	0.1280	0.0352
141.0	0.7742	0.6026	0.4021	0.1357	0.1659	0.2914	0.4811	0.3418	0.1205	0.0402
144.0	0.7189	0.5276	0.3769	0.1451	0.1508	0.2662	0.4558	0.3218	0.0953	0.0552
147.0	0.6636	0.4822	0.3519	0.1545	0.1208	0.2111	0.4372	0.2966	0.0603	0.0603
150.0	0.6083	0.4419	0.3368	0.1558	0.0956	0.1910	0.4019	0.2715	0.0452	0.0753
153.0	0.5581	0.3718	0.3256	0.1658	0.0755	0.1557	0.3566	0.2312	0.0452	0.1054
156.0	0.5028	0.3416	0.3222	0.1759	0.0754	0.1255	0.3015	0.1961	0.0452	0.1248
159.0	0.4375	0.2864	0.3189	0.1850	0.0754	0.0952	0.2814	0.1710	0.0452	0.1313
162.0	0.3972	0.2661	0.3117	0.1960	0.0504	0.0603	0.2409	0.1208	0.0352	0.1378
165.0	0.3420	0.2361	0.3016	0.2050	0.0402	0.0603	0.1809	0.0805	0.0352	0.1443
168.0	0.1761	0.2211	0.2945	0.2077	0.0453	0.0402	0.0753	0.0402	0.0352	0.1507
171.0	0.1509	0.2081	0.2766	0.2072	0.0402	0.0402	0.0603	0.0402	0.0352	0.1658
174.0	0.1258	0.1990	0.2715	0.2066	0.0352	0.0402	0.0452	0.0402	0.0352	0.1909
177.0	0.0906	0.2009	0.2664	0.2061	0.0352	0.0352	0.0452	0.0402	0.0352	0.2010
180.0	0.0402	0.0402	0.2061	0.2111	0.1960	0.1759	0.0352	0.0302	0.1256	0.2111
G/C	300.0	330.0								
0.0	3.508	3.493								
3.0	3.493	3.513								
6.0	3.491	3.528								
9.0	3.489	3.543								
12.0	3.458	3.552								
15.0	3.418	3.548								
18.0	3.367	3.544								
21.0	3.302	3.540								
24.0	3.236	3.523								
27.0	3.171	3.483								
30.0	3.085	3.443								

C Range: 0 - 360DEG
 C Interval: 30.0DEG
 Test Speed: HIGH
 Temperature: 25.3DEG
 Operators: LPC
 Test Date: 2021-12-15

γ Range: 0 - 180DEG
 γ Interval: 1.0DEG
 Test System: EVERFINE GO-2000B_V1 SYSTEM V2.0.362
 Humidity: 65.0%
 Test Distance: 9.200m [K=1.0000]
 Remarks:

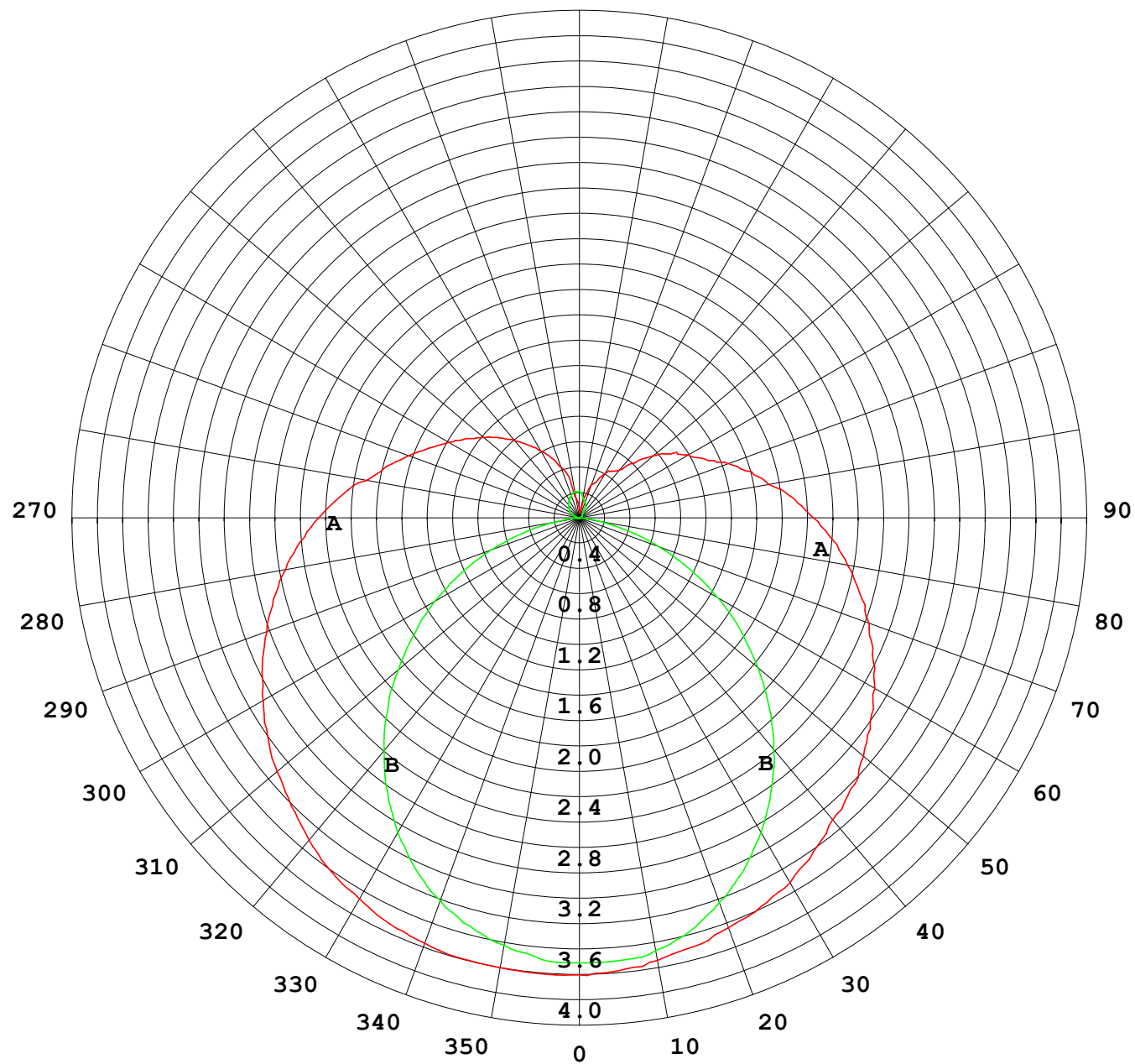
Photometric Data Table [cd]

33.0	2.990	3.388
36.0	2.889	3.342
39.0	2.799	3.287
42.0	2.699	3.232
45.0	2.598	3.181
48.0	2.472	3.116
51.0	2.361	3.056
54.0	2.226	2.980
57.0	2.115	2.895
60.0	1.990	2.815
63.0	1.884	2.739
66.0	1.749	2.654
69.0	1.628	2.578
72.0	1.512	2.498
75.0	1.402	2.413
78.0	1.296	2.327
81.0	1.186	2.252
84.0	1.090	2.166
87.0	1.010	2.081
90.0	0.9396	2.005
93.0	0.8793	1.925
96.0	0.8343	1.850
99.0	0.7789	1.655
102.0	0.7482	1.578
105.0	0.6753	1.533
108.0	0.6480	1.463
111.0	0.6031	1.402
114.0	0.6025	1.347
117.0	0.5477	1.277
120.0	0.5235	1.216
123.0	0.5025	1.151
126.0	0.4672	1.101
129.0	0.4416	1.036
132.0	0.3869	0.9301
135.0	0.3668	0.8446
138.0	0.3567	0.7140
141.0	0.3166	0.6585
144.0	0.2974	0.5732
147.0	0.2884	0.5378
150.0	0.2854	0.4876
153.0	0.2824	0.4374
156.0	0.2811	0.3821
159.0	0.2796	0.3418
162.0	0.2782	0.2967
165.0	0.2767	0.2692
168.0	0.2512	0.2623
171.0	0.2372	0.2553
174.0	0.2312	0.2483
177.0	0.2211	0.2414
180.0	0.2161	0.1910

C Range: 0 - 360DEG
C Interval: 30.0DEG
Test Speed: HIGH
Temperature:25.3DEG
Operators:LPC
Test Date:2021-12-15

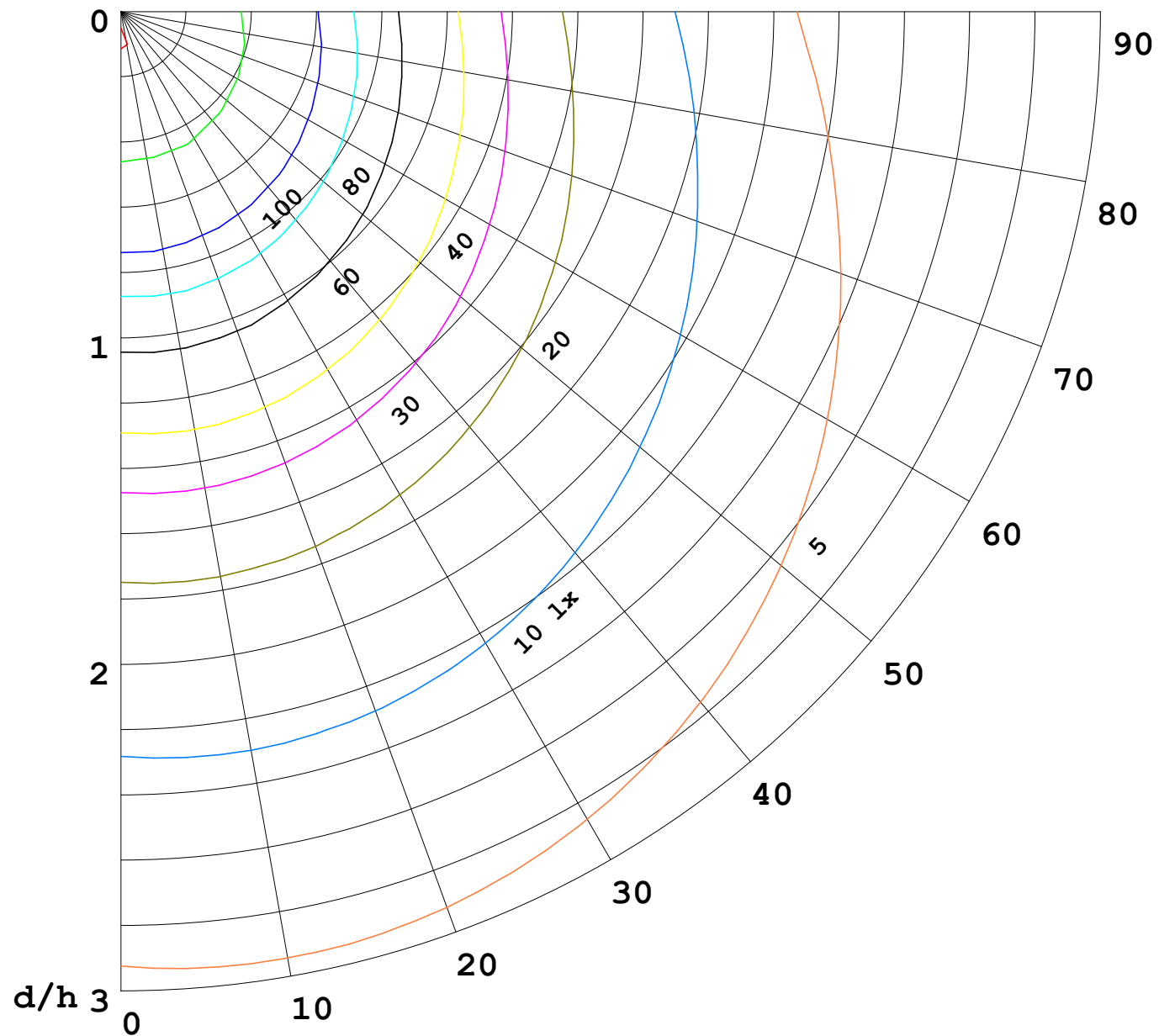
γ Range: 0 - 180DEG
γ Interval: 1.0DEG
Test System:EVERFINE GO-2000B_V1 SYSTEM V2.0.362
Humidity:65.0%
Test Distance:9.200m [K=1.0000]
Remarks:

I (cd)



1000 lm

$\kappa = 1$



F = 5000 lm
 K = 0.7
 Hcc = 0.0 m
 Hfc = 0.0 m
 Eave = 100 lx

	Pcc	Pw	Pfc
—	70	50	30
—	50	30	20

