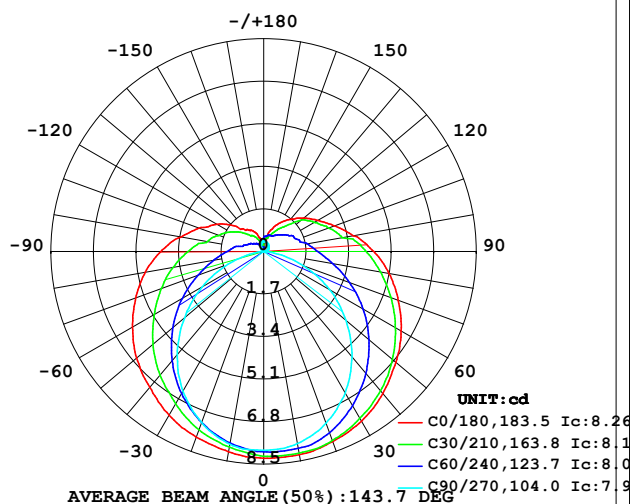


## LUMINAIRE PHOTOMETRIC TEST REPORT

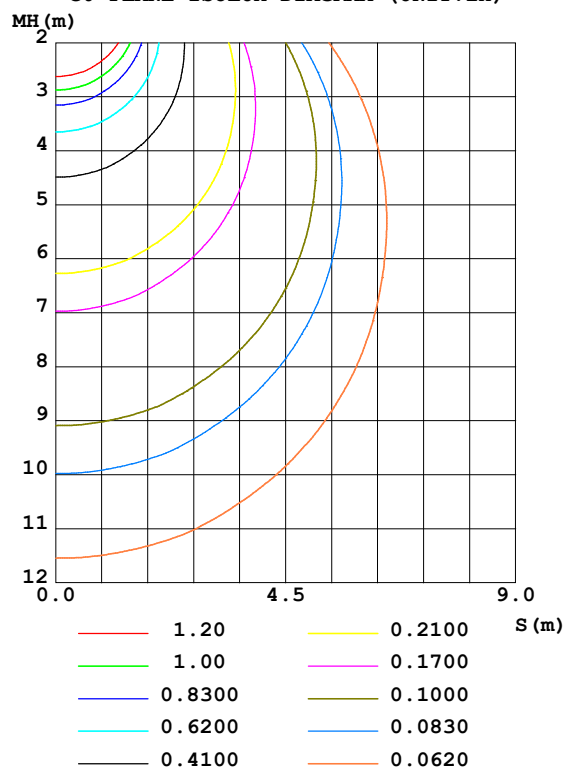
Test:U:24.00V I:0.2112A P:5.069W PF:1.000 Freq:50.00Hz Lamp Flux:39.5121x1 lm		
NAME: SF21-24V-5050-56-DMX3-RGB-R	TYPE: 硅胶	WEIGHT:
SPEC.:	DIM.: 28mm*11.5mm	SERIAL No.:2021121501
MFR.: OLYMPIA	SUR.:1*0.016	Shielding Angle:

DATA OF LAMP		PHOTOMETRIC DATA				Eff: 7.80 lm/W
MODEL	5050	I <sub>max</sub> (cd)	8.267	S/MH (C0/180)	1.37	
NOMINAL POWER (W)	4	LOR (%)	100.0	S/MH (C90/270)	1.21	
RATED VOLTAGE (V)	24	TOTAL FLUX (lm)	39.512	η UP, DN (C0-180)	11.1, 39.1	
NOMINAL FLUX (lm)	39.5121	CIE CLASS	SEMI-D.	η UP, DN (C180-360)	10.8, 39.0	
LAMPS INSIDE	1	η up (%)	21.9	CIBSE SHR NOM	1.50	
TEST VOLTAGE (V)	24	η down (%)	78.1	CIBSE SHR MAX	1.55	

LUMINOUS INTENSITY DISTRIBUTION DIAGRAM



C0 PLANE ISOLUX DIAGRAM (UNIT: lx)



C Range: 0 - 360DEG  
C Interval: 30.0DEG  
Test Speed: HIGH  
Temperature: 25.3DEG  
Operators: LPC  
Test Date: 2021-12-15

γ Range: 0 - 180DEG  
γ Interval: 1.0DEG  
Test System: EVERFINE GO-2000B\_V1 SYSTEM V2.0.362  
Humidity: 65.0%  
Test Distance: 9.200m [K=1.0000]  
Remarks:

## ZONAL FLUX DIAGRAM

## ZONAL FLUX DIAGRAM:

$\gamma$	C0	C45	C90	C135	C180	C225	C270	C315	$\gamma$	$\Phi$ zone	$\Phi$ total	%lum, lamp
10	8.243	8.081	7.800	7.717	8.126	7.850	7.820	7.949	0- 10	0.7623	0.7623	1.93,1.93
20	8.082	7.870	7.292	7.277	7.890	7.423	7.268	7.752	10- 20	2.202	2.964	7.5,7.5
30	7.825	7.401	6.523	6.654	7.558	6.802	6.459	7.322	20- 30	3.391	6.355	16.1,16.1
40	7.414	6.815	5.502	5.928	7.086	6.076	5.384	6.777	30- 40	4.219	10.57	26.8,26.8
50	6.896	6.104	4.291	5.106	6.638	5.259	4.137	6.114	40- 50	4.633	15.21	38.5,38.5
60	6.343	5.332	3.034	4.275	6.055	4.407	2.841	5.360	50- 60	4.639	19.85	50.2,50.2
70	5.725	4.536	1.713	3.458	5.447	3.578	1.524	4.583	60- 70	4.283	24.13	61.1,61.1
80	5.087	3.772	0.5169	2.744	4.809	2.857	0.3978	3.824	70- 80	3.687	27.82	70.4,70.4
90	4.398	3.131	0.0804	2.156	4.110	2.247	0.0352	3.191	80- 90	3.031	30.85	78.1,78.1
100	3.640	2.480	0.1006	1.613	3.361	1.724	0.0202	2.558	90-100	2.484	33.33	84.4,84.4
110	3.011	2.096	0.1558	1.241	2.749	1.334	0.0402	2.180	100-110	1.911	35.24	89.2,89.2
120	2.503	1.814	0.2011	0.9851	2.181	1.096	0.0653	1.840	110-120	1.487	36.73	93,93
130	2.081	1.500	0.2462	0.7664	1.613	0.8544	0.1273	1.501	120-130	1.118	37.85	95.8,95.8
140	1.684	1.090	0.2855	0.6031	1.116	0.6108	0.1860	1.088	130-140	0.7519	38.60	97.7,97.7
150	1.322	0.8392	0.3367	0.4195	0.9748	0.4798	0.2712	0.8554	140-150	0.4753	39.07	98.9,98.9
160	0.9401	0.6823	0.3820	0.2563	0.6827	0.3008	0.3346	0.6795	150-160	0.2764	39.35	99.6,99.6
170	0.4072	0.5770	0.3849	0.1757	0.2814	0.1668	0.3970	0.6116	160-170	0.1279	39.48	99.9,99.9
180	0.1658	0.2563	0.3769	0.4096	0.1658	0.1608	0.4573	0.4297	170-180	0.0347	39.51	100,100
DEG	LUMINOUS INTENSITY:cd									UNIT:lm		

Conical surface Flux(90deg): 12.865 lm

%lum = 32.6%

%lamp = 32.6%

Conical surface Flux(120deg): 19.845 lm

%lum = 50.2%

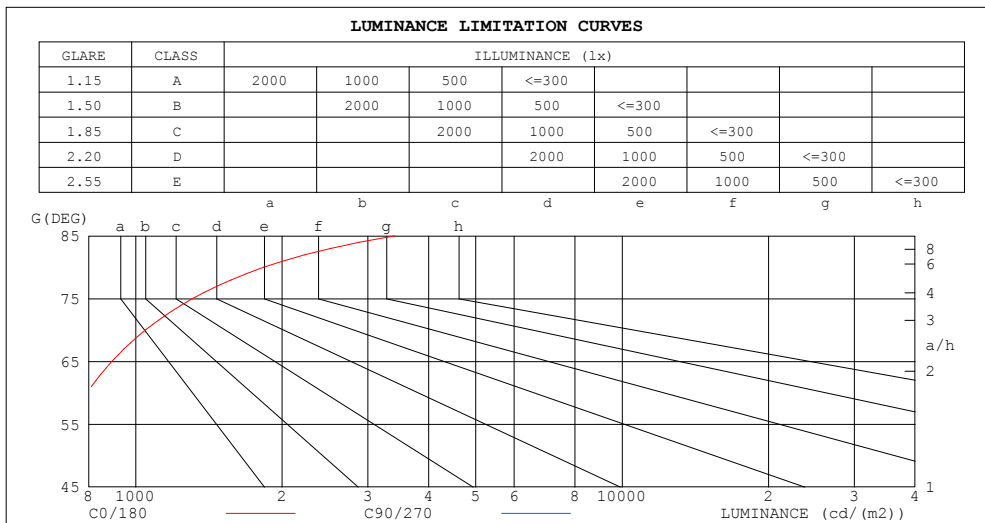
%lamp = 50.2%

C Range: 0 - 360DEG  
 C Interval: 30.0DEG  
 Test Speed: HIGH  
 Temperature:25.3DEG  
 Operators:LPC  
 Test Date:2021-12-15

$\gamma$  Range: 0 - 180DEG  
 $\gamma$  Interval: 1.0DEG  
 Test System:EVERFINE GO-2000B\_V1 SYSTEM V2.0.362  
 Humidity:65.0%  
 Test Distance:9.200m [K=1.0000]  
 Remarks:

## LUMINANCE LIMITATION CURVES

Test:U:24.00V I:0.2112A P:5.069W PF:1.000 Freq:50.00Hz Lamp Flux:39.5121x1 lm		
NAME: SF21-24V-5050-56-DMX3-RGB-R	TYPE: 硅胶	WEIGHT:
SPEC.:	DIM.: 28mm*11.5mm	SERIAL No.:2021121501
MFR.: OLYMPIA	SUR.:1*0.016	Shielding Angle:



LUMINANCE cd/(m2)		
G (DEG)	C0/180	C90/270
85	3406	86
80	1831	186
75	1307	263
70	1046	313
65	893	351
60	793	379
55	723	400
50	671	417
45	632	434

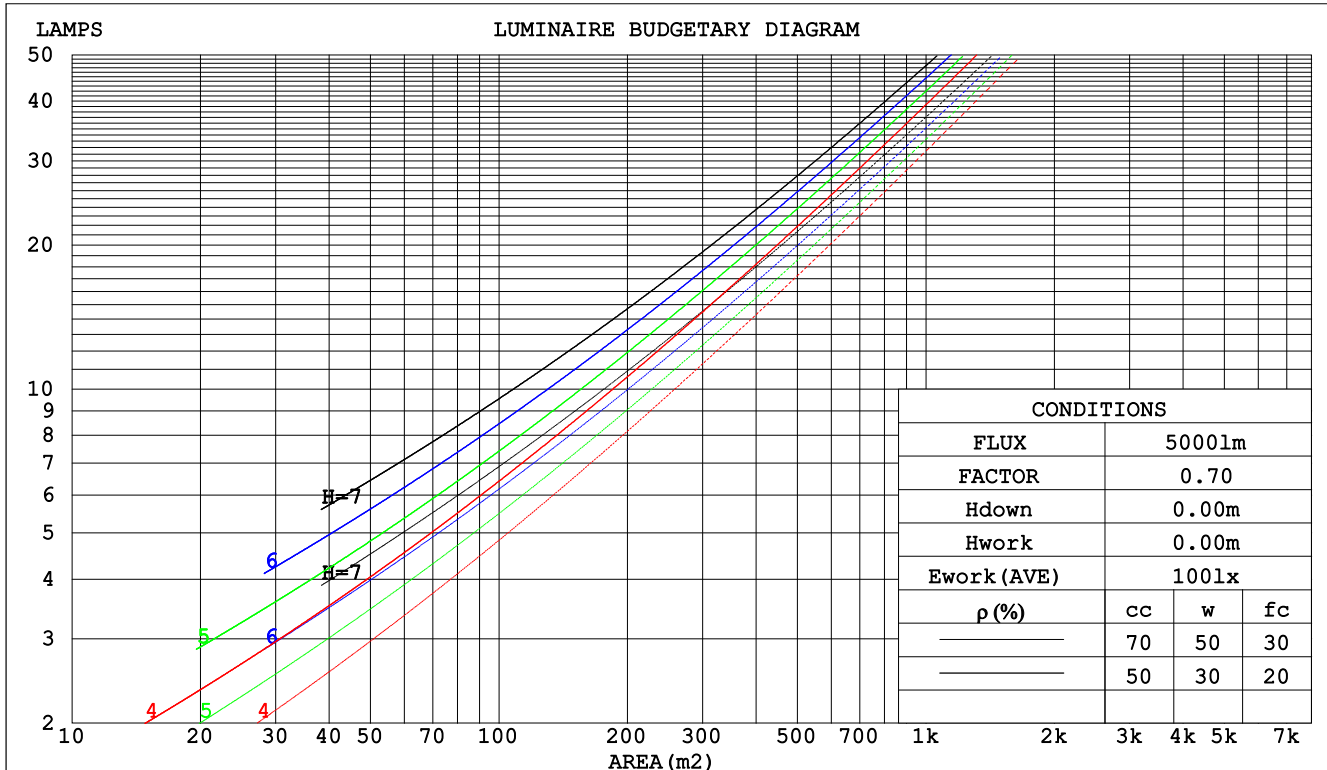
C Range: 0 - 360DEG  
C Interval: 30.0DEG  
Test Speed: HIGH  
Temperature:25.3DEG  
Operators:LPC  
Test Date:2021-12-15

$\gamma$  Range: 0 - 180DEG  
 $\gamma$  Interval: 1.0DEG  
Test System:EVERFINE GO-2000B\_V1 SYSTEM V2.0.362  
Humidity:65.0%  
Test Distance:9.200m [K=1.0000]  
Remarks:

## CU AND LUMINAIRE BUDGETARY ESTIMATE DIAGRAM

Test:U:24.00V I:0.2112A P:5.069W PF:1.000 Freq:50.00Hz Lamp Flux:39.5121x1 lm		
NAME: SF21-24V-5050-56-DMX3-RGB-R	TYPE: 硅胶	WEIGHT:
SPEC.:	DIM.: 28mm*11.5mm	SERIAL No.:2021121501
MFR.: OLYMPIA	SUR.:1*0.016	Shielding Angle:

pcc	80%			70%			50%			30%			10%			0
pw	50%	30%	10%	50%	30%	10%	50%	30%	10%	50%	30%	10%	50%	30%	10%	0
pfc	20%			20%			20%			20%			20%			0
RCR	RCR:Room Cavity Ratio						Coefficients of Utilization(CU)									
0.0	1.14	1.14	1.14	1.09	1.09	1.09	.99	.99	.99	.90	.90	.90	.82	.82	.82	.78
1.0	.95	.89	.84	.90	.85	.81	.82	.78	.74	.74	.71	.68	.67	.65	.62	.59
2.0	.81	.73	.66	.77	.70	.64	.70	.64	.59	.63	.59	.54	.57	.53	.50	.47
3.0	.70	.61	.54	.67	.59	.52	.61	.54	.48	.55	.49	.45	.50	.45	.41	.38
4.0	.62	.52	.45	.59	.50	.43	.53	.46	.40	.48	.42	.38	.44	.39	.35	.32
5.0	.55	.45	.38	.52	.43	.37	.47	.40	.34	.43	.37	.32	.39	.34	.30	.27
6.0	.49	.40	.33	.47	.38	.32	.43	.35	.30	.39	.33	.28	.35	.30	.26	.23
7.0	.44	.35	.29	.42	.34	.28	.39	.31	.26	.35	.29	.24	.32	.27	.23	.20
8.0	.40	.31	.25	.38	.30	.25	.35	.28	.23	.32	.26	.22	.29	.24	.20	.18
9.0	.37	.28	.23	.35	.27	.22	.32	.25	.21	.30	.24	.19	.27	.22	.18	.16
10.0	.34	.26	.20	.32	.25	.20	.30	.23	.19	.27	.22	.18	.25	.20	.16	.15



C Range: 0 - 360DEG  
 C Interval: 30.0DEG  
 Test Speed: HIGH  
 Temperature:25.3DEG  
 Operators:LPC  
 Test Date:2021-12-15

γ Range: 0 - 180DEG  
 γ Interval: 1.0DEG  
 Test System:EVERFINE GO-2000B\_V1 SYSTEM V2.0.362  
 Humidity:65.0%  
 Test Distance:9.200m [K=1.0000]  
 Remarks:

## WEC AND CCEC

Test:U:24.00V I:0.2112A P:5.069W PF:1.000 Freq:50.00Hz Lamp Flux:39.5121x1 lm		
NAME: SF21-24V-5050-56-DMX3-RGB-R	TYPE: 硅胶	WEIGHT:
SPEC.:	DIM.: 28mm*11.5mm	SERIAL No.:2021121501
MFR.: OLYMPIA	SUR.:1*0.016	Shielding Angle:

pcc	80%			70%			50%			30%			10%			0	
pw	50%	30%	10%	50%	30%	10%	50%	30%	10%	50%	30%	10%	50%	30%	10%	0	
pfc	20%			20%			20%			20%			20%			0	
RCR	RCR:Room Cavity Ratio						Wall Exitance Coefficients(WEC)										
0.0																	
1.0	.386	.220	.070	.372	.212	.067	.346	.199	.063	.322	.186	.060	.300	.174	.056		
2.0	.333	.182	.056	.320	.176	.054	.297	.165	.051	.275	.154	.048	.255	.144	.045		
3.0	.295	.157	.047	.284	.152	.046	.262	.142	.043	.243	.133	.041	.224	.124	.038		
4.0	.265	.138	.041	.255	.134	.039	.236	.125	.037	.218	.117	.035	.201	.109	.033		
5.0	.241	.123	.036	.232	.119	.035	.214	.111	.033	.198	.104	.031	.182	.097	.029		
6.0	.221	.111	.032	.212	.107	.031	.196	.101	.029	.181	.094	.028	.167	.088	.026		
7.0	.204	.101	.029	.196	.098	.028	.181	.092	.026	.167	.086	.025	.154	.080	.024		
8.0	.189	.092	.026	.182	.089	.025	.168	.084	.024	.155	.079	.023	.143	.073	.021		
9.0	.176	.085	.024	.169	.083	.023	.157	.077	.022	.145	.073	.021	.134	.068	.020		
10.0	.165	.079	.022	.159	.077	.021	.147	.072	.020	.136	.067	.019	.125	.063	.018		

pcc	80%			70%			50%			30%			10%			0
pw	50%	30%	10%	50%	30%	10%	50%	30%	10%	50%	30%	10%	50%	30%	10%	0
pfc	20%			20%			20%			20%			20%			0
RCR	RCR:Room Cavity Ratio						Ceiling Cavity Exitance Coefficients(CCEC)									
0.0	.358	.358	.358	.306	.306	.306	.209	.209	.209	.120	.120	.120	.038	.038	.038	
1.0	.354	.324	.297	.303	.278	.255	.207	.191	.177	.119	.111	.103	.038	.036	.033	
2.0	.347	.301	.263	.298	.259	.227	.204	.179	.158	.118	.104	.093	.038	.034	.030	
3.0	.340	.285	.241	.291	.246	.209	.200	.171	.147	.116	.100	.086	.037	.032	.028	
4.0	.332	.273	.227	.285	.236	.197	.196	.164	.139	.113	.096	.082	.036	.031	.027	
5.0	.324	.263	.217	.279	.227	.189	.192	.159	.134	.111	.093	.079	.036	.030	.026	
6.0	.317	.255	.210	.273	.221	.183	.188	.155	.130	.109	.091	.077	.035	.030	.025	
7.0	.310	.248	.205	.267	.215	.179	.184	.151	.127	.107	.089	.075	.035	.029	.025	
8.0	.303	.243	.201	.261	.211	.176	.181	.148	.125	.105	.087	.074	.034	.029	.025	
9.0	.297	.238	.198	.256	.207	.173	.177	.145	.123	.103	.086	.073	.033	.028	.024	
10.0	.291	.234	.196	.251	.203	.171	.174	.143	.122	.102	.085	.073	.033	.028	.024	

C Range: 0 - 360DEG  
 C Interval: 30.0DEG  
 Test Speed: HIGH  
 Temperature:25.3DEG  
 Operators:LPC  
 Test Date:2021-12-15

γ Range: 0 - 180DEG  
 γ Interval: 1.0DEG  
 Test System:EVERFINE GO-2000B\_V1 SYSTEM V2.0.362  
 Humidity:65.0%  
 Test Distance:9.200m [K=1.0000]  
 Remarks:

### UGR(Unified Glare Rating) Table

Test:U:24.00V I:0.2112A P:5.069W PF:1.000 Freq:50.00Hz Lamp Flux:39.5121x1 lm										
NAME: SF21-24V-5050-56-DMX3-RGB-R					TYPE: 硅胶			WEIGHT:		
SPEC.:					DIM.: 28mm*11.5mm			SERIAL No.:2021121501		
MFR.: OLYMPIA					SUR.:1*0.016			Shielding Angle:		
ceiling/cavity	0.7	0.7	0.5	0.5	0.3	0.7	0.7	0.5	0.5	0.3
walls	0.5	0.3	0.5	0.3	0.3	0.5	0.3	0.5	0.3	0.3
working plane	0.2	0.2	0.2	0.2	0.2	0.2	0.2	0.2	0.2	0.2
Room dimensions	Viewed crosswise					Viewed endwise				
x = 2H y = 2H	22.4	23.7	22.9	24.3	24.9	19.7	21.1	20.3	21.6	22.3
3H	25.2	26.4	25.8	27.0	27.7	21.2	22.4	21.8	23.0	23.7
4H	26.7	27.9	27.3	28.5	29.2	21.7	22.9	22.3	23.5	24.2
6H	28.4	29.5	29.1	30.2	30.9	22.0	23.1	22.7	23.8	24.5
8H	29.4	30.4	30.0	31.1	31.8	22.1	23.2	22.8	23.8	24.6
12H	30.5	31.5	31.1	32.2	32.9	22.1	23.1	22.8	23.8	24.5
4H 2H	23.0	24.2	23.6	24.8	25.5	21.1	22.3	21.7	22.9	23.6
3H	26.0	27.1	26.7	27.7	28.5	22.9	23.9	23.6	24.6	25.4
4H	27.8	28.7	28.5	29.4	30.2	23.7	24.7	24.4	25.3	26.1
6H	29.7	30.6	30.4	31.3	32.1	24.3	25.2	25.0	25.9	26.7
8H	30.8	31.6	31.5	32.3	33.1	24.5	25.3	25.2	26.0	26.9
12H	32.0	32.7	32.7	33.5	34.3	24.6	25.4	25.4	26.1	26.9
8H 4H	28.2	29.0	28.9	29.7	30.5	25.1	25.9	25.8	26.6	27.4
6H	30.4	31.1	31.2	31.8	32.7	26.2	26.8	26.9	27.6	28.4
8H	31.7	32.3	32.5	33.1	34.0	26.6	27.2	27.4	28.0	28.9
12H	33.2	33.8	34.0	34.5	35.4	27.0	27.5	27.8	28.3	29.2
12H 4H	28.2	28.9	28.9	29.6	30.5	25.5	26.2	26.2	27.0	27.8
6H	30.6	31.2	31.3	31.9	32.8	26.9	27.5	27.6	28.2	29.1
8H	32.0	32.5	32.8	33.3	34.2	27.6	28.1	28.4	28.9	29.8
Variations with the observer position at spacings:										
S = 1.0H	+ 0.1 / - 0.1					+ 0.1 / - 0.1				
1.5H	+ 0.2 / - 0.3					+ 0.2 / - 0.3				
2.0H	+ 0.3 / - 0.4					+ 0.3 / - 0.4				

CIE Pub.117, 39.51 lm Total Lamp Luminous Flux Correct (8log(F/F0) = -11.2)

C Range: 0 - 360DEG  
C Interval: 30.0DEG  
Test Speed: HIGH  
Temperature:25.3DEG  
Operators:LPC  
Test Date:2021-12-15

γ Range: 0 - 180DEG  
γ Interval: 1.0DEG  
Test System:EVERFINE GO-2000B\_V1 SYSTEM V2.0.362  
Humidity:65.0%  
Test Distance:9.200m [K=1.0000]  
Remarks:

### UTILIZATION FACTORS TABLE

Test:U:24.00V I:0.2112A P:5.069W PF:1.000 Freq:50.00Hz Lamp Flux:39.5121x1 lm		
NAME: SF21-24V-5050-56-DMX3-RGB-R	TYPE: 硅胶	WEIGHT:
SPEC.:	DIM.: 28mm*11.5mm	SERIAL No.:2021121501
MFR.: OLYMPIA	SUR.:1*0.016	Shielding Angle:

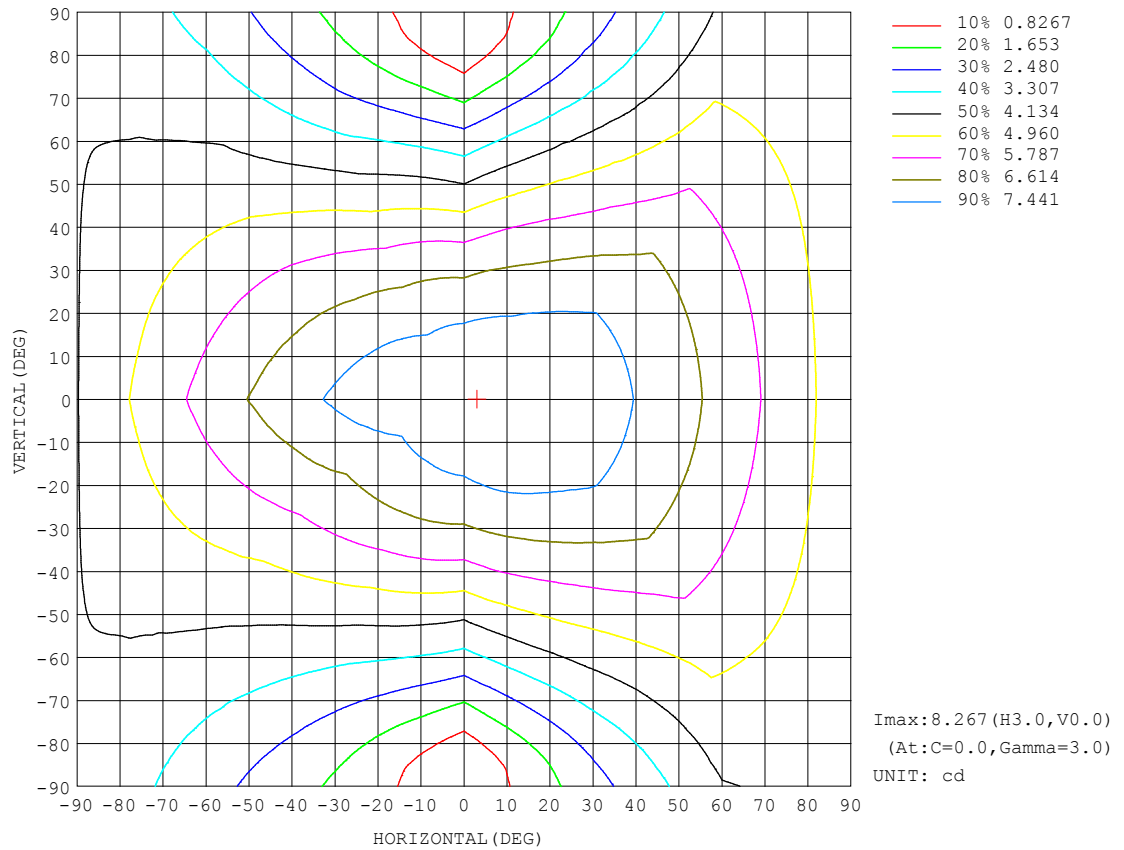
REFLECTANCE										
Ceiling	0.8	0.8	0.8	0.7	0.7	0.7	0.5	0.5	0.5	0
Walls	0.7	0.5	0.3	0.7	0.5	0.3	0.7	0.5	0.3	0
Working plane	0.2	0.2	0.2	0.2	0.2	0.2	0.2	0.2	0.2	0
ROOM INDEX	UTILIZATION FACTORS (PERCENT) $k(RI) \times RCR = 5$									
$k = 0.60$	47	34	27	45	34	27	43	33	26	19
0.80	56	43	35	54	42	34	51	40	33	25
1.00	63	50	42	61	49	41	57	49	40	31
1.25	70	57	49	68	56	48	63	53	46	36
1.50	75	63	54	72	61	53	67	58	51	40
2.00	83	71	63	79	69	61	73	65	58	46
2.50	87	77	69	83	74	67	77	69	63	49
3.00	91	81	74	87	78	71	80	73	67	53
4.00	96	87	81	91	84	78	84	78	73	57
5.00	99	92	86	94	88	82	86	81	77	60
ROOM INDEX	UF (total)									Direct
According to DIN EN 13032-2 2004			Suspended					SHRNOM = 1.25		

C Range: 0 - 360DEG  
C Interval: 30.0DEG  
Test Speed: HIGH  
Temperature:25.3DEG  
Operators:LPC  
Test Date:2021-12-15

$\gamma$  Range: 0 - 180DEG  
 $\gamma$  Interval: 1.0DEG  
Test System:EVERFINE GO-2000B\_V1 SYSTEM V2.0.362  
Humidity:65.0%  
Test Distance:9.200m [K=1.0000]  
Remarks:

## ISOCANDELA DIAGRAM

Test:U:24.00V I:0.2112A P:5.069W PF:1.000 Freq:50.00Hz Lamp Flux:39.5121x1 lm		
NAME: SF21-24V-5050-56-DMX3-RGB-R	TYPE: 硅胶	WEIGHT:
SPEC.:	DIM.: 28mm*11.5mm	SERIAL No.:2021121501
MFR.: OLYMPIA	SUR.:1*0.016	Shielding Angle:



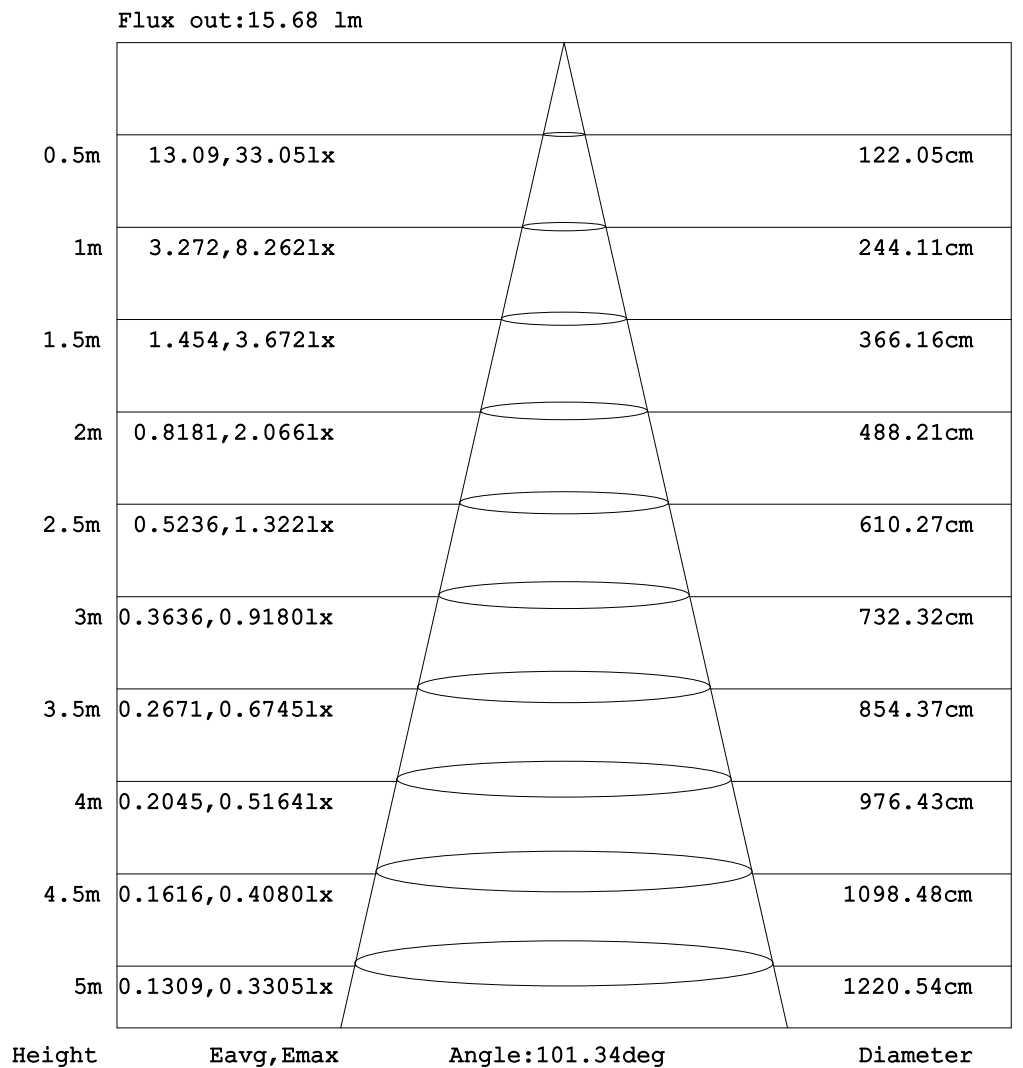
C Range: 0 - 360DEG  
C Interval: 30.0DEG  
Test Speed: HIGH  
Temperature: 25.3DEG  
Operators: LPC  
Test Date: 2021-12-15

$\gamma$  Range: 0 - 180DEG  
 $\gamma$  Interval: 1.0DEG  
Test System: EVERFINE GO-2000B\_V1 SYSTEM V2.0.362  
Humidity: 65.0%  
Test Distance: 9.200m [K=1.0000]  
Remarks:



### AAI Figure

Test:U:24.00V I:0.2112A P:5.069W PF:1.000 Freq:50.00Hz Lamp Flux:39.512lx1 lm		
NAME: SF21-24V-5050-56-DMX3-RGB-R	TYPE: 硅胶	WEIGHT:
SPEC.:	DIM.: 28mm*11.5mm	SERIAL No.:2021121501
MFR.: OLYMPIA	SUR.:1*0.016	Shielding Angle:



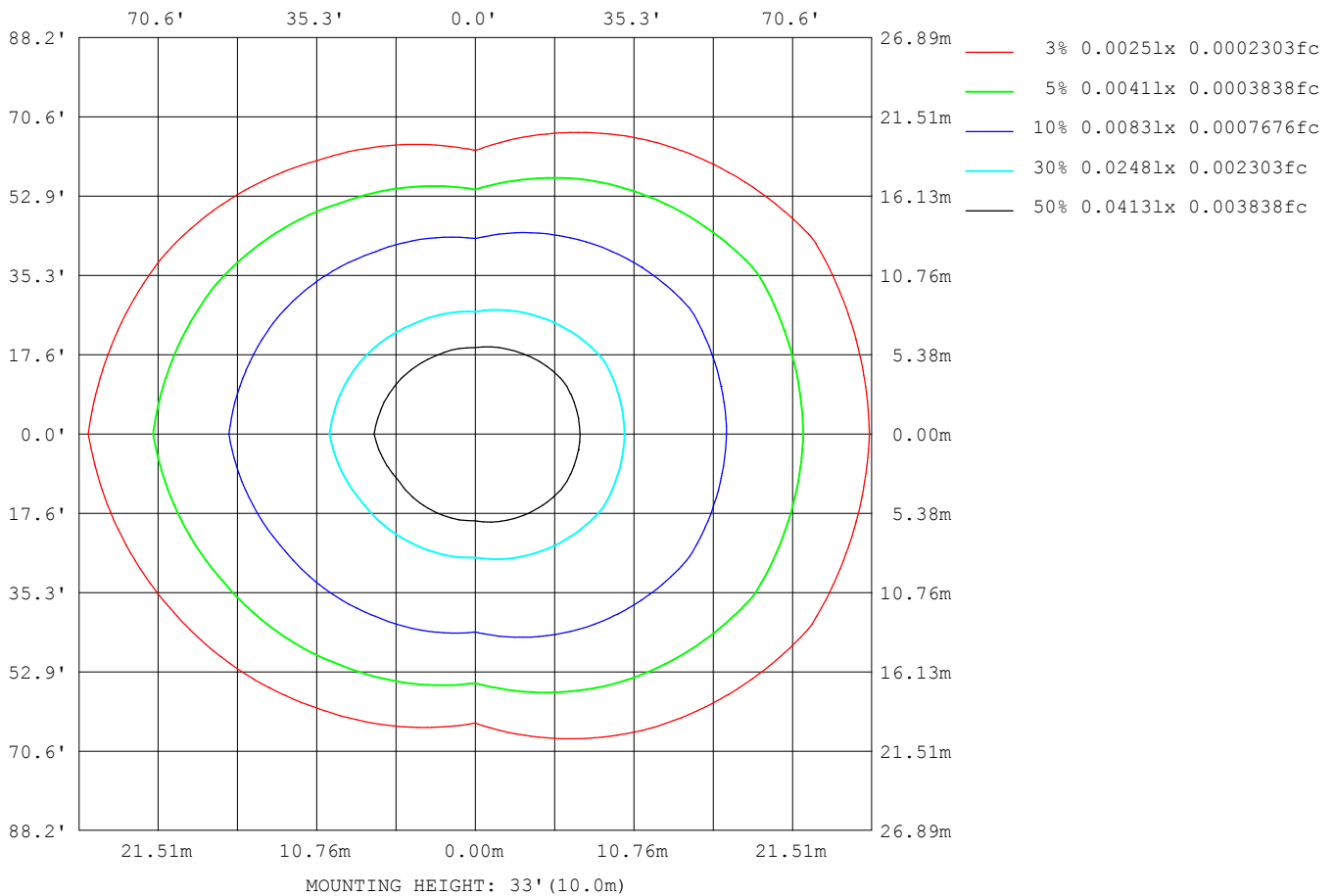
Note: The Curves indicate the illuminated area and the average illumination when the luminaire is at different distance.

C Range: 0 - 360DEG  
C Interval: 30.0DEG  
Test Speed: HIGH  
Temperature: 25.3DEG  
Operators: LPC  
Test Date: 2021-12-15

γ Range: 0 - 180DEG  
γ Interval: 1.0DEG  
Test System: EVERFINE GO-2000B\_V1 SYSTEM V2.0.362  
Humidity: 65.0%  
Test Distance: 9.200m [K=1.0000]  
Remarks:

## ISOLUX DIAGRAM

Test:U:24.00V I:0.2112A P:5.069W PF:1.000 Freq:50.00Hz Lamp Flux:39.512lx1 lm		
NAME: SF21-24V-5050-56-DMX3-RGB-R	TYPE: 硅胶	WEIGHT:
SPEC.:	DIM.: 28mm*11.5mm	SERIAL No.:2021121501
MFR.: OLYMPIA	SUR.:1*0.016	Shielding Angle:



C Range: 0 - 360DEG  
C Interval: 30.0DEG  
Test Speed: HIGH  
Temperature:25.3DEG  
Operators:LPC  
Test Date:2021-12-15

$\gamma$  Range: 0 - 180DEG  
 $\gamma$  Interval: 1.0DEG  
Test System:EVERFINE GO-2000B\_V1 SYSTEM V2.0.362  
Humidity:65.0%  
Test Distance:9.200m [K=1.0000]  
Remarks:

## LED Avg.L Report

Test:U:24.00V I:0.2112A P:5.069W PF:1.000 Freq:50.00Hz Lamp Flux:39.5121x1 lm		
NAME: SF21-24V-5050-56-DMX3-RGB-R	TYPE:硅胶	WEIGHT:
SPEC.:	DIM.: 28mm*11.5mm	SERIAL No.:2021121501
MFR.: OLYMPIA	SUR.:1*0.016	Shielding Angle:

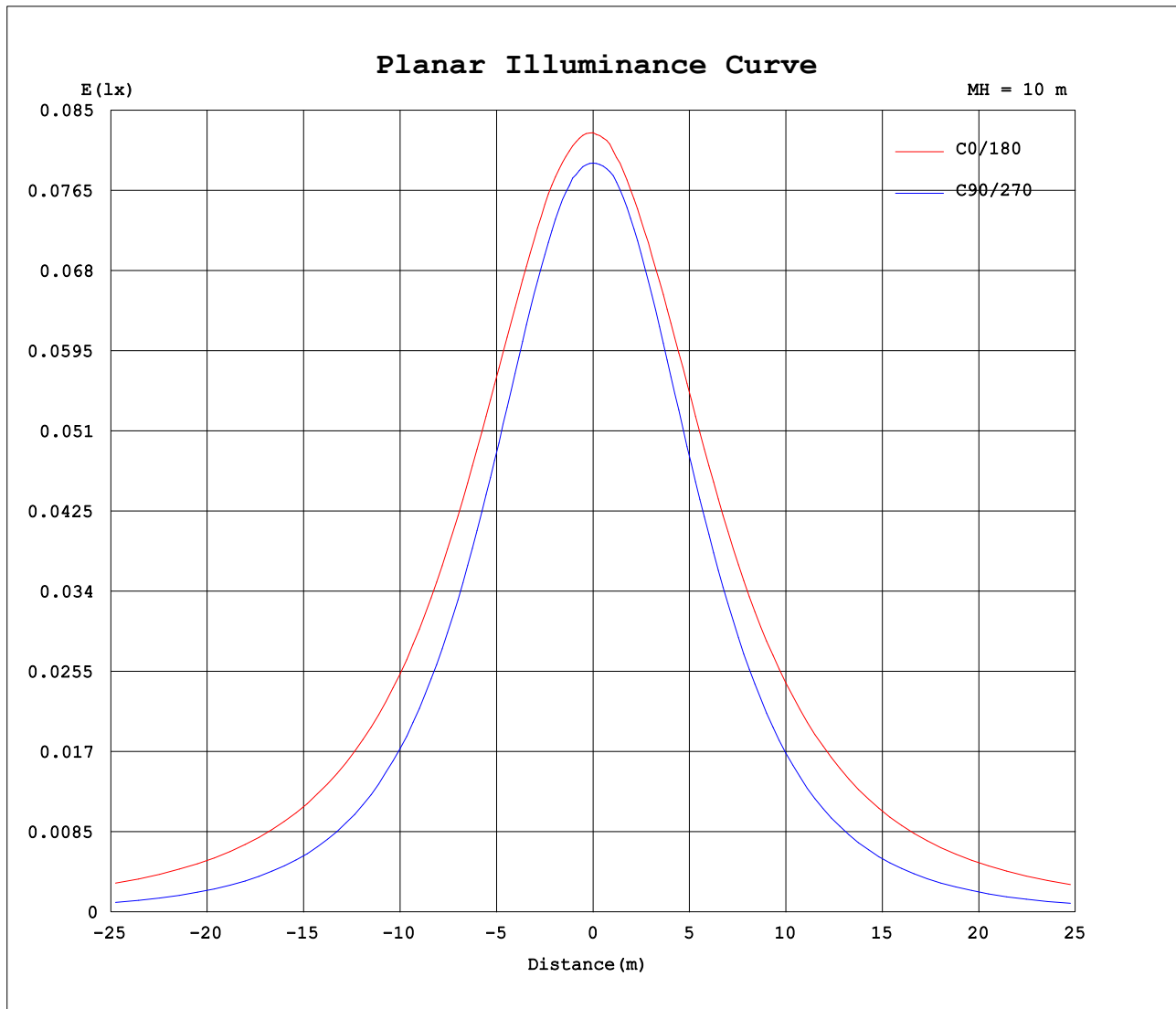
AvgL	cd/m2
L_0~180 (65) av	872
L_0~180 (75) av	1273
L_0~180 (85) av	3303
L_90~270 (65) av	336
L_90~270 (75) av	242
L_90~270 (85) av	65
L_45 (65) av	662
L_45 (75) av	899
L_45 (85) av	2185

Standard: GB/T 29293-2012

C Range: 0 - 360DEG  
C Interval: 30.0DEG  
Test Speed: HIGH  
Temperature:25.3DEG  
Operators:LPC  
Test Date:2021-12-15

γ Range: 0 - 180DEG  
γ Interval: 1.0DEG  
Test System:EVERFINE GO-2000B\_V1 SYSTEM V2.0.362  
Humidity:65.0%  
Test Distance:9.200m [K=1.0000]  
Remarks:

## Planar Illuminance Curve



C Range: 0 - 360DEG  
C Interval: 30.0DEG  
Test Speed: HIGH  
Temperature: 25.3DEG  
Operators: LPC  
Test Date: 2021-12-15

$\gamma$  Range: 0 - 180DEG  
 $\gamma$  Interval: 1.0DEG  
Test System: EVERFINE GO-2000B\_V1 SYSTEM V2.0.362  
Humidity: 65.0%  
Test Distance: 9.200m [K=1.0000]  
Remarks:

## LUMINOUS DISTRIBUTION INTENSITY DATA

Test:U:24.00V I:0.2112A P:5.069W PF:1.000 Freq:50.00Hz Lamp Flux:39.5121x1 lm		
NAME: SF21-24V-5050-56-DMX3-RGB-R	TYPE: 硅胶	WEIGHT:
SPEC.:	DIM.: 28mm*11.5mm	SERIAL No.:2021121501
MFR.: OLYMPIA	SUR.:1*0.016	Shielding Angle:

Table--1

UNIT: cd

C (DEG) γ (DEG)	0	30	60	90	120	150	180	210	240	270	300	330						
0	8.26	8.19	8.01	7.94	7.94	7.92	8.26	8.19	8.01	7.94	7.94	7.92						
5	8.26	8.19	8.01	7.91	7.89	7.79	8.24	8.07	7.92	7.94	7.94	8.00						
10	8.24	8.18	7.98	7.80	7.76	7.68	8.13	7.93	7.77	7.82	7.90	8.00						
15	8.19	8.16	7.91	7.59	7.54	7.51	8.01	7.78	7.55	7.59	7.75	8.00						
20	8.08	8.04	7.70	7.29	7.27	7.29	7.89	7.58	7.27	7.27	7.54	7.96						
25	7.97	7.89	7.43	6.95	6.95	7.01	7.76	7.33	6.94	6.89	7.27	7.85						
30	7.83	7.69	7.11	6.52	6.59	6.72	7.56	7.04	6.57	6.46	6.96	7.68						
35	7.64	7.51	6.74	6.02	6.17	6.46	7.34	6.74	6.15	5.95	6.64	7.49						
40	7.41	7.27	6.36	5.50	5.71	6.15	7.09	6.45	5.70	5.38	6.28	7.28						
45	7.15	7.02	5.94	4.91	5.23	5.81	6.87	6.13	5.22	4.77	5.89	7.06						
50	6.90	6.71	5.49	4.29	4.76	5.45	6.64	5.78	4.74	4.14	5.43	6.80						
55	6.64	6.40	5.05	3.67	4.27	5.11	6.36	5.41	4.26	3.50	4.99	6.51						
60	6.34	6.08	4.59	3.03	3.78	4.77	6.06	5.05	3.76	2.84	4.53	6.19						
65	6.04	5.75	4.12	2.38	3.29	4.41	5.75	4.70	3.27	2.17	4.06	5.88						
70	5.72	5.42	3.65	1.71	2.84	4.08	5.45	4.35	2.80	1.52	3.60	5.57						
75	5.41	5.07	3.22	1.09	2.43	3.74	5.13	4.03	2.39	0.91	3.16	5.24						
80	5.09	4.74	2.81	0.52	2.08	3.41	4.81	3.68	2.03	0.40	2.74	4.91						
85	4.75	4.42	2.45	0.12	1.76	3.08	4.46	3.34	1.72	0.06	2.38	4.60						
90	4.40	4.09	2.17	0.08	1.53	2.78	4.11	3.03	1.47	0.04	2.10	4.28						
95	4.06	3.81	1.96	0.09	1.32	2.52	3.77	2.74	1.30	0.04	1.88	3.99						
100	3.64	3.18	1.78	0.10	1.18	2.05	3.36	2.29	1.16	0.02	1.73	3.39						
105	3.32	3.01	1.51	0.13	0.85	1.92	3.03	2.13	0.85	0.04	1.45	3.21						
110	3.01	2.76	1.43	0.16	0.80	1.68	2.75	1.90	0.77	0.04	1.39	2.97						
115	2.73	2.54	1.34	0.18	0.70	1.51	2.40	1.74	0.68	0.04	1.25	2.75						
120	2.50	2.34	1.29	0.20	0.63	1.34	2.18	1.56	0.63	0.07	1.16	2.52						
125	2.29	2.16	1.15	0.23	0.58	1.19	1.91	1.37	0.54	0.11	1.08	2.31						
130	2.08	1.96	1.04	0.25	0.52	1.01	1.61	1.20	0.51	0.13	0.93	2.07						
135	1.89	1.58	0.95	0.26	0.49	0.84	1.28	1.02	0.45	0.15	0.88	1.75						
140	1.68	1.31	0.87	0.29	0.43	0.77	1.12	0.83	0.39	0.19	0.76	1.42						
145	1.51	1.13	0.80	0.30	0.36	0.65	1.05	0.77	0.36	0.21	0.69	1.20						
150	1.32	0.95	0.72	0.34	0.29	0.55	0.97	0.67	0.29	0.27	0.67	1.05						
155	1.15	0.79	0.70	0.36	0.24	0.43	0.86	0.54	0.21	0.30	0.66	0.86						
160	0.94	0.67	0.70	0.38	0.22	0.29	0.68	0.41	0.19	0.33	0.65	0.71						
165	0.78	0.56	0.67	0.38	0.17	0.22	0.55	0.30	0.17	0.37	0.64	0.62						
170	0.41	0.53	0.62	0.38	0.16	0.19	0.28	0.17	0.16	0.40	0.61	0.61						
175	0.31	0.48	0.61	0.39	0.15	0.17	0.21	0.17	0.16	0.43	0.59	0.60						
180	0.17	0.15	0.36	0.38	0.44	0.38	0.17	0.16	0.17	0.46	0.47	0.39						

C Range: 0 - 360DEG  
C Interval: 30.0DEG  
Test Speed: HIGH  
Temperature:25.3DEG  
Operators:LPC  
Test Date:2021-12-15

γ Range: 0 - 180DEG  
γ Interval: 1.0DEG  
Test System:EVERFINE GO-2000B\_V1 SYSTEM V2.0.362  
Humidity:65.0%  
Test Distance:9.200m [K=1.0000]  
Remarks:

Photometric Data Table [cd]

G/C	0.0	30.0	60.0	90.0	120.0	150.0	180.0	210.0	240.0	270.0
0.0	8.262	8.187	8.011	7.941	7.936	7.920	8.262	8.187	8.011	7.941
3.0	8.267	8.192	8.026	7.936	7.926	7.840	8.242	8.122	7.961	7.941
6.0	8.257	8.189	8.008	7.910	7.866	7.770	8.202	8.041	7.900	7.936
9.0	8.246	8.182	7.990	7.840	7.790	7.694	8.147	7.966	7.805	7.855
12.0	8.236	8.172	7.972	7.719	7.665	7.614	8.076	7.881	7.684	7.735
15.0	8.187	8.157	7.911	7.588	7.539	7.513	8.006	7.780	7.548	7.589
18.0	8.122	8.101	7.791	7.432	7.378	7.382	7.930	7.670	7.387	7.419
21.0	8.057	8.006	7.655	7.227	7.208	7.232	7.855	7.539	7.206	7.192
24.0	7.996	7.920	7.494	7.020	7.012	7.066	7.775	7.383	7.000	6.981
27.0	7.911	7.820	7.308	6.769	6.801	6.895	7.679	7.218	6.784	6.715
30.0	7.825	7.694	7.107	6.523	6.590	6.719	7.558	7.037	6.568	6.459
33.0	7.715	7.589	6.896	6.231	6.338	6.563	7.428	6.846	6.321	6.142
36.0	7.599	7.453	6.675	5.919	6.077	6.392	7.277	6.685	6.060	5.836
39.0	7.459	7.312	6.439	5.593	5.801	6.221	7.126	6.509	5.789	5.489
42.0	7.308	7.176	6.188	5.261	5.514	6.020	7.000	6.323	5.502	5.142
45.0	7.147	7.015	5.936	4.909	5.233	5.814	6.870	6.127	5.216	4.765
48.0	6.991	6.835	5.670	4.537	4.951	5.608	6.724	5.921	4.934	4.389
51.0	6.851	6.659	5.404	4.165	4.665	5.387	6.583	5.705	4.648	4.012
54.0	6.700	6.473	5.137	3.803	4.373	5.176	6.412	5.484	4.356	3.630
57.0	6.524	6.267	4.866	3.422	4.077	4.965	6.231	5.268	4.065	3.238
60.0	6.343	6.076	4.589	3.034	3.780	4.769	6.055	5.051	3.763	2.841
63.0	6.157	5.894	4.303	2.642	3.484	4.543	5.874	4.840	3.466	2.459
66.0	5.976	5.689	4.032	2.245	3.197	4.347	5.693	4.629	3.165	2.032
69.0	5.790	5.483	3.745	1.833	2.921	4.146	5.503	4.423	2.889	1.645
72.0	5.604	5.276	3.474	1.456	2.670	3.940	5.317	4.217	2.627	1.288
75.0	5.413	5.070	3.217	1.090	2.433	3.739	5.131	4.026	2.386	0.9108
78.0	5.218	4.869	2.966	0.7328	2.212	3.533	4.949	3.820	2.165	0.5990
81.0	5.021	4.673	2.730	0.4263	2.011	3.342	4.739	3.609	1.959	0.3073
84.0	4.820	4.482	2.504	0.1903	1.820	3.150	4.532	3.408	1.769	0.0962
87.0	4.609	4.296	2.328	0.0804	1.654	2.960	4.321	3.207	1.608	0.0452
90.0	4.398	4.091	2.172	0.0804	1.528	2.784	4.110	3.026	1.467	0.0352
93.0	4.182	3.910	2.036	0.0904	1.403	2.618	3.904	2.855	1.357	0.0352
96.0	3.981	3.733	1.915	0.0905	1.287	2.457	3.713	2.684	1.256	0.0352
99.0	3.780	3.351	1.810	0.1005	1.186	2.100	3.457	2.318	1.181	0.0352
102.0	3.509	3.116	1.704	0.1207	1.051	1.995	3.231	2.232	1.044	0.0351
105.0	3.318	3.010	1.508	0.1307	0.8498	1.920	3.035	2.131	0.8493	0.0352
108.0	3.132	2.869	1.493	0.1457	0.8143	1.844	2.859	2.021	0.8338	0.0402
111.0	2.951	2.714	1.402	0.1608	0.7792	1.638	2.693	1.875	0.7536	0.0402
114.0	2.790	2.588	1.345	0.1759	0.7238	1.528	2.447	1.789	0.6934	0.0402
117.0	2.639	2.452	1.339	0.1860	0.6637	1.432	2.311	1.669	0.6631	0.0452
120.0	2.503	2.337	1.292	0.2011	0.6335	1.337	2.181	1.563	0.6282	0.0653
123.0	2.368	2.231	1.196	0.2192	0.6031	1.246	2.035	1.448	0.5975	0.0803
126.0	2.252	2.126	1.126	0.2282	0.5680	1.151	1.859	1.332	0.5226	0.1205
129.0	2.126	2.030	1.061	0.2412	0.5278	1.045	1.673	1.237	0.5126	0.1256
132.0	2.001	1.814	1.000	0.2563	0.5087	0.9447	1.512	1.126	0.4723	0.1307
135.0	1.885	1.578	0.9501	0.2614	0.4876	0.8443	1.276	1.015	0.4512	0.1507
138.0	1.739	1.422	0.9098	0.2814	0.4575	0.7839	1.231	0.9199	0.4420	0.1808
141.0	1.649	1.266	0.8546	0.2895	0.4173	0.7634	1.106	0.8143	0.3868	0.1910
144.0	1.543	1.166	0.8043	0.3015	0.3771	0.6833	1.075	0.7942	0.3767	0.2060
147.0	1.433	1.090	0.7691	0.3067	0.3319	0.6131	1.000	0.7339	0.3065	0.2210
150.0	1.322	0.9546	0.7239	0.3367	0.2915	0.5475	0.9748	0.6736	0.2860	0.2712
153.0	1.217	0.8492	0.7071	0.3468	0.2407	0.4772	0.9142	0.5834	0.2217	0.2888
156.0	1.106	0.7637	0.7026	0.3619	0.2385	0.4118	0.8390	0.5178	0.2088	0.3064
159.0	0.9704	0.6784	0.6981	0.3770	0.2362	0.3164	0.7481	0.4525	0.1959	0.3275
162.0	0.8899	0.6128	0.6936	0.3826	0.1761	0.2362	0.5981	0.3370	0.1759	0.3567
165.0	0.7795	0.5599	0.6685	0.3835	0.1734	0.2190	0.5544	0.3017	0.1673	0.3658
168.0	0.4325	0.5405	0.6485	0.3844	0.1659	0.2005	0.3065	0.2314	0.1644	0.3819
171.0	0.3872	0.5274	0.6208	0.3852	0.1584	0.1856	0.2813	0.1704	0.1615	0.4020
174.0	0.3319	0.5173	0.6132	0.3861	0.1538	0.1707	0.2160	0.1681	0.1587	0.4270
177.0	0.2767	0.4573	0.6081	0.3870	0.1508	0.1558	0.2006	0.1658	0.1558	0.4472
180.0	0.1658	0.1508	0.3619	0.3769	0.4372	0.3820	0.1658	0.1558	0.1658	0.4573
G/C	300.0	330.0								
0.0	7.936	7.920								
3.0	7.936	7.951								
6.0	7.931	7.996								
9.0	7.915	8.004								
12.0	7.845	8.000								
15.0	7.754	7.996								
18.0	7.634	7.991								
21.0	7.498	7.936								
24.0	7.332	7.870								
27.0	7.151	7.780								
30.0	6.960	7.685								

C Range: 0 - 360DEG  
 C Interval: 30.0DEG  
 Test Speed: HIGH  
 Temperature: 25.3DEG  
 Operators: LPC  
 Test Date: 2021-12-15

γ Range: 0 - 180DEG  
 γ Interval: 1.0DEG  
 Test System: EVERFINE GO-2000B\_V1 SYSTEM V2.0.362  
 Humidity: 65.0%  
 Test Distance: 9.200m [K=1.0000]  
 Remarks:

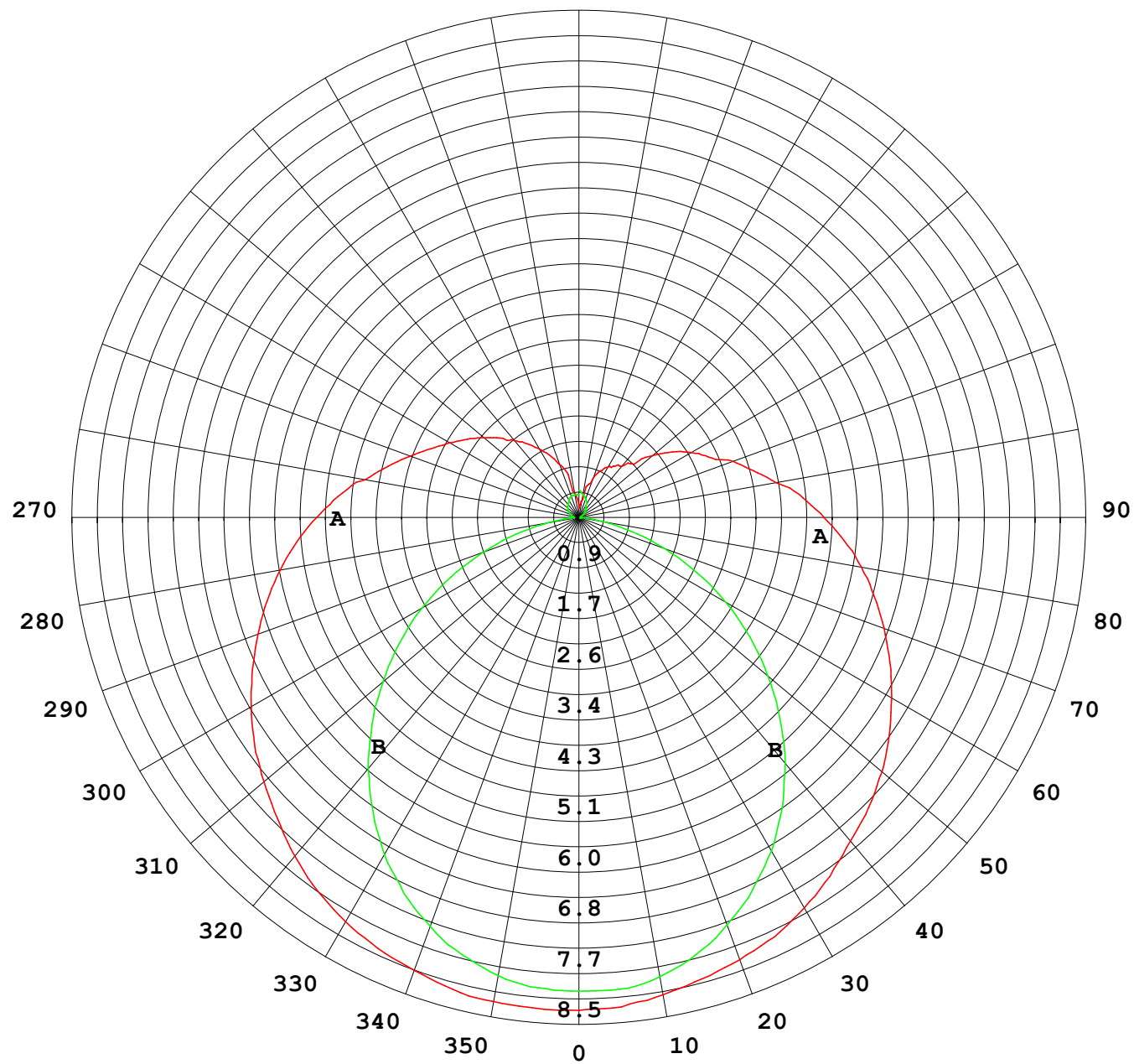
## Photometric Data Table [cd]

33.0	6.774	7.564
36.0	6.568	7.448
39.0	6.347	7.323
42.0	6.126	7.192
45.0	5.889	7.057
48.0	5.613	6.901
51.0	5.341	6.735
54.0	5.095	6.579
57.0	4.804	6.383
60.0	4.527	6.192
63.0	4.241	6.001
66.0	3.969	5.820
69.0	3.713	5.624
72.0	3.406	5.434
75.0	3.155	5.237
78.0	2.914	5.036
81.0	2.673	4.845
84.0	2.447	4.669
87.0	2.261	4.473
90.0	2.100	4.282
93.0	1.960	4.106
96.0	1.849	3.936
99.0	1.739	3.511
102.0	1.637	3.327
105.0	1.447	3.212
108.0	1.417	3.056
111.0	1.378	2.925
114.0	1.341	2.790
117.0	1.241	2.659
120.0	1.161	2.518
123.0	1.116	2.388
126.0	1.075	2.282
129.0	0.9993	2.147
132.0	0.9196	1.925
135.0	0.8842	1.749
138.0	0.8088	1.498
141.0	0.7384	1.387
144.0	0.6936	1.222
147.0	0.6711	1.136
150.0	0.6651	1.046
153.0	0.6591	0.9203
156.0	0.6532	0.8246
159.0	0.6472	0.7440
162.0	0.6412	0.6636
165.0	0.6352	0.6213
168.0	0.6182	0.6148
171.0	0.6081	0.6077
174.0	0.6079	0.6005
177.0	0.5679	0.5781
180.0	0.4674	0.3920

C Range: 0 - 360DEG  
 C Interval: 30.0DEG  
 Test Speed: HIGH  
 Temperature: 25.3DEG  
 Operators: LPC  
 Test Date: 2021-12-15

γ Range: 0 - 180DEG  
 γ Interval: 1.0DEG  
 Test System: EVERFINE GO-2000B\_V1 SYSTEM V2.0.362  
 Humidity: 65.0%  
 Test Distance: 9.200m [K=1.0000]  
 Remarks:

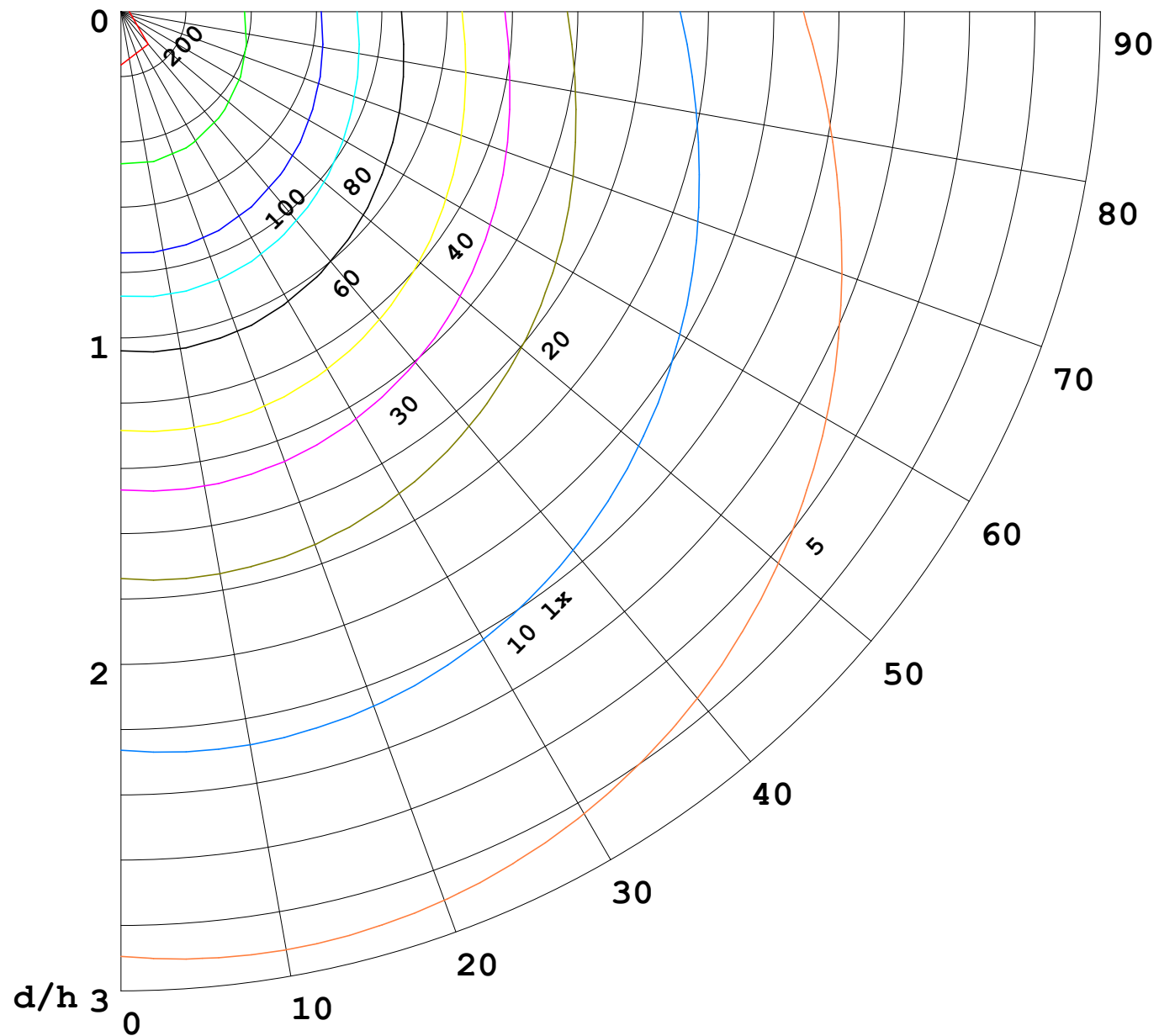
I (cd)





1000 lm

$\kappa = 1$



F = 5000 lm  
 K = 0.7  
 Hcc = 0.0 m  
 Hfc = 0.0 m  
 Eave = 100 lx

	Pcc	Pw	Pfc
—	70	50	30
—	50	30	20

