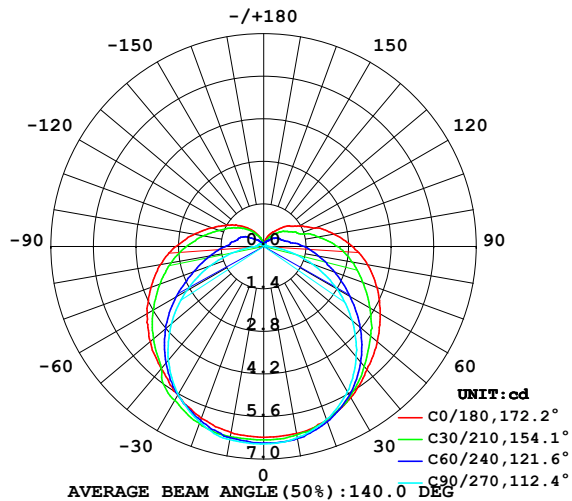


LUMINAIRE PHOTOMETRIC TEST REPORT

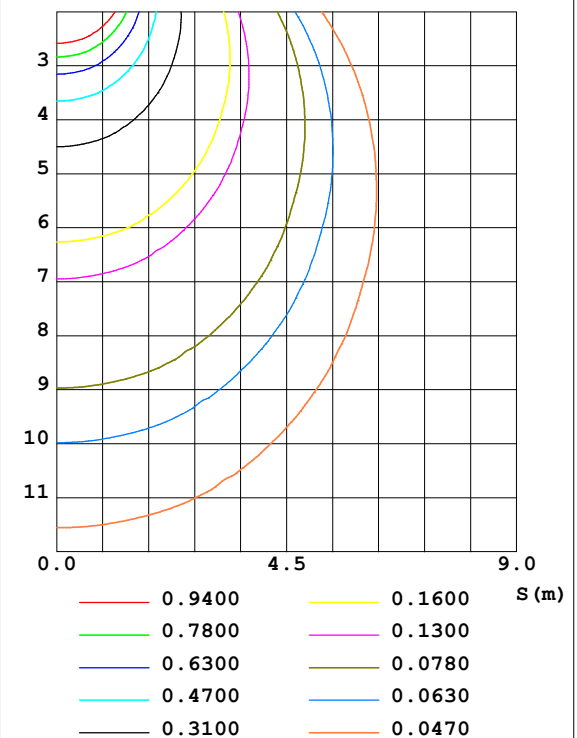
Test:U:12.00V I:0.4823A P:5.788W PF:1.000 Lamp Flux:29.6979x1 lm		
NAME: SF21-12V-5050-60-W12-SPI4-3000K-R	TYPE: 硅胶	WEIGHT:
DIM.: 28MM*11.5MM	SPEC.:	SERIAL No.:20230223
MFR.: OLYMPIA	SUR.:0.5*0.018	PROTECTION ANGLE:

DATA OF LAMP		PHOTOMETRIC DATA				Eff: 5.13 lm/W
MODEL	5050	I _{max} (cd)	6.600	S/MH (C0/180)	1.36	
NOMINAL POWER (W)	4.25	LOR (%)	100.0	S/MH (C90/270)	1.26	
RATED VOLTAGE (V)	12	TOTAL FLUX (lm)	29.699	η UP, DN (C0-180)	9.1, 40.8	
NOMINAL FLUX (lm)	29.6979	CIE CLASS	SEMI-D.	η UP, DN (C180-360)	9.1, 41.1	
LAMPS INSIDE	1	η up (%)	18.1	CIBSE SHR NOM	1.50	
TEST VOLTAGE (V)	12.0	η down (%)	81.9	CIBSE SHR MAX	1.55	

LUMINOUS INTENSITY DISTRIBUTION DIAGRAM



C0 PLANE ISOLUX DIAGRAM (UNIT:lx)



C Range: 0 - 360DEG
C Interval: 30.0DEG
Test Speed: HIGH
Temperature:25.3DEG
Operators:WFW
Test Date:2023-02-23

γ Range: 0 - 180DEG
γ Interval: 1.0DEG
Test System:EVERFINE GO-2000B_V1 SYSTEM V2.0.269
Humidity:65.0%
Test Distance:10.800m [K=1.0000]
Remarks:

ZONAL FLUX DIAGRAM
AND LUMINANCE LIMITATION CURVES

ZONAL FLUX DIAGRAM:

γ	C0	C45	C90	C135	C180	C225	C270	C315	γ	Φ zone	Φ total	%lum, lamp
10	6.251	6.358	6.385	6.514	6.212	6.368	6.454	6.528	0- 10	0.6141	0.6141	2.07,2.07
20	6.074	6.102	6.060	6.240	6.025	6.140	6.157	6.292	10- 20	1.782	2.397	8.07,8.07
30	5.742	5.672	5.513	5.780	5.651	5.745	5.631	5.849	20- 30	2.748	5.145	17.3,17.3
40	5.292	5.060	4.736	5.170	5.249	5.125	4.890	5.250	30- 40	3.406	8.551	28.8,28.8
50	4.883	4.374	3.808	4.575	4.875	4.477	3.963	4.557	40- 50	3.701	12.25	41.3,41.3
60	4.433	3.657	2.776	3.885	4.425	3.767	2.930	3.781	50- 60	3.668	15.92	53.6,53.6
70	3.969	2.985	1.703	3.200	3.947	3.054	1.885	3.071	60- 70	3.338	19.26	64.8,64.8
80	3.470	2.393	0.6986	2.497	3.462	2.445	0.8596	2.455	70- 80	2.817	22.07	74.3,74.3
90	2.923	1.884	0.1316	1.967	2.894	1.901	0.2564	1.918	80- 90	2.241	24.32	81.9,81.9
100	2.355	1.350	0.0970	1.617	2.320	1.503	0.2084	1.441	90-100	1.739	26.06	87.7,87.7
110	1.781	0.9349	0.0762	1.250	1.814	1.195	0.1846	0.9938	100-110	1.290	27.34	92.1,92.1
120	1.351	0.7722	0.0762	0.9454	1.399	0.9315	0.1583	0.7859	110-120	0.9279	28.27	95.2,95.2
130	1.060	0.5955	0.0693	0.7099	1.073	0.6650	0.1247	0.5956	120-130	0.6456	28.92	97.4,97.4
140	0.7412	0.4017	0.0693	0.4986	0.7684	0.4813	0.0831	0.3873	130-140	0.4100	29.33	98.8,98.8
150	0.5127	0.2528	0.0693	0.3220	0.5054	0.3004	0.0623	0.2286	140-150	0.2247	29.55	99.5,99.5
160	0.3119	0.1455	0.0623	0.1662	0.2768	0.1732	0.0623	0.1455	150-160	0.1023	29.66	99.9,99.9
170	0.1247	0.0901	0.0762	0.0866	0.0831	0.0867	0.0485	0.1017	160-170	0.0354	29.69	100,100
180	0.0762	0.0727	0.0693	0.0831	0.0762	0.0693	0.0831	0.0831	170-180	0.0079	29.70	100,100
DEG	LUMINOUS INTENSITY:cd									UNIT:lm		



LUMINANCE cd/(m2)		
G (DEG)	C0/180	C90/270
85	368	33
80	200	40
75	144	45
70	116	50
65	100	53
60	89	56
55	81	57
50	76	59
45	72	61

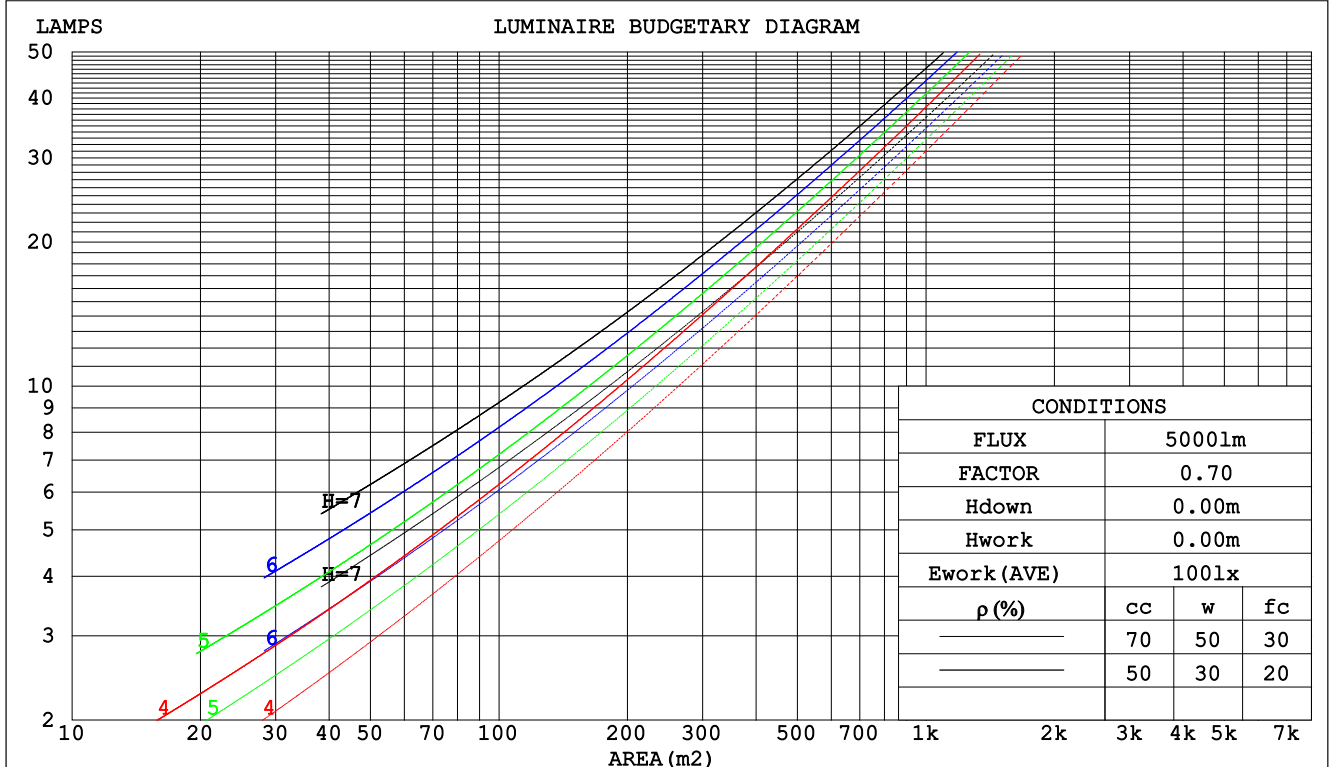
C Range: 0 - 360DEG
C Interval: 30.0DEG
Test Speed: HIGH
Temperature:25.3DEG
Operators:WFW
Test Date:2023-02-23

γ Range: 0 - 180DEG
 γ Interval: 1.0DEG
Test System:EVERFINE GO-2000B_V1 SYSTEM V2.0.269
Humidity:65.0%
Test Distance:10.800m [K=1.0000]
Remarks:

CU AND LUMINAIRE BUDGETARY ESTIMATE DIAGRAM

Test:U:12.00V I:0.4823A P:5.788W PF:1.000 Lamp Flux:29.6979x1 lm		
NAME: SF21-12V-5050-60-W12-SPI4-3000K-R	TYPE: 硅胶	WEIGHT:
DIM.: 28MM*11.5MM	SPEC.:	SERIAL No.:20230223
MFR.: OLYMPIA	SUR.:0.5*0.018	PROTECTION ANGLE:

pcc	80%			70%			50%			30%			10%			0
pw	50%	30%	10%	50%	30%	10%	50%	30%	10%	50%	30%	10%	50%	30%	10%	0
pfc	20%			20%			20%			20%			20%			0
RCR	RCR:Room Cavity Ratio						Coefficients of Utilization(CU)									
0.0	1.15	1.15	1.15	1.10	1.10	1.10	1.01	1.01	1.01	.93	.93	.93	.85	.85	.85	.82
1.0	.96	.90	.85	.91	.87	.82	.84	.80	.76	.77	.74	.71	.70	.68	.66	.62
2.0	.82	.74	.67	.78	.71	.65	.72	.66	.61	.66	.61	.57	.60	.56	.53	.49
3.0	.71	.62	.55	.68	.60	.53	.62	.55	.50	.57	.51	.47	.52	.48	.44	.40
4.0	.62	.53	.46	.60	.51	.44	.55	.48	.42	.50	.44	.39	.46	.41	.37	.34
5.0	.55	.46	.39	.53	.44	.38	.49	.41	.36	.45	.39	.34	.41	.36	.32	.29
6.0	.49	.40	.33	.48	.39	.33	.44	.36	.31	.40	.34	.29	.37	.32	.27	.25
7.0	.45	.36	.29	.43	.35	.29	.40	.32	.27	.37	.30	.26	.34	.28	.24	.22
8.0	.41	.32	.26	.39	.31	.25	.36	.29	.24	.34	.27	.23	.31	.26	.22	.19
9.0	.37	.29	.23	.36	.28	.23	.33	.26	.21	.31	.25	.20	.29	.23	.19	.17
10.0	.34	.26	.21	.33	.25	.20	.31	.24	.19	.29	.23	.18	.27	.21	.18	.16



C Range: 0 - 360DEG
C Interval: 30.0DEG
Test Speed: HIGH
Temperature:25.3DEG
Operators:WFW
Test Date:2023-02-23

γ Range: 0 - 180DEG
γ Interval: 1.0DEG
Test System:EVERFINE GO-2000B_V1 SYSTEM V2.0.269
Humidity:65.0%
Test Distance:10.800m [K=1.0000]
Remarks:

WEC AND CCEC

Test:U:12.00V I:0.4823A P:5.788W PF:1.000 Lamp Flux:29.6979x1 lm					
NAME: SF21-12V-5050-60-W12-SPI4-3000K-R			TYPE: 硅胶		WEIGHT:
DIM.: 28MM*11.5MM			SPEC.:		SERIAL No.:20230223
MFR.: OLYMPIA			SUR.:0.5*0.018		PROTECTION ANGLE:

pcc	80%			70%			50%			30%			10%			0	
pw	50%	30%	10%	50%	30%	10%	50%	30%	10%	50%	30%	10%	50%	30%	10%	0	
pfc	20%			20%			20%			20%			20%			0	
RCR	RCR:Room Cavity Ratio						Wall Exitance Coefficients(WEC)										
0.0																	
1.0	.385	.219	.069	.373	.213	.068	.349	.200	.064	.327	.189	.060	.307	.178	.057		
2.0	.333	.183	.056	.322	.177	.055	.300	.167	.052	.280	.157	.049	.262	.148	.047		
3.0	.296	.157	.047	.286	.153	.046	.266	.144	.044	.248	.136	.042	.231	.128	.040		
4.0	.266	.138	.041	.257	.134	.040	.239	.127	.038	.223	.120	.036	.207	.113	.034		
5.0	.242	.123	.036	.234	.120	.035	.217	.113	.033	.202	.107	.032	.188	.101	.030		
6.0	.222	.111	.032	.214	.108	.031	.199	.102	.030	.186	.096	.028	.173	.091	.027		
7.0	.205	.101	.029	.197	.098	.028	.184	.093	.027	.171	.088	.026	.160	.083	.024		
8.0	.190	.093	.026	.183	.090	.025	.171	.085	.024	.159	.081	.023	.148	.076	.022		
9.0	.177	.086	.024	.171	.083	.023	.159	.079	.022	.149	.075	.021	.139	.070	.020		
10.0	.165	.079	.022	.160	.077	.022	.149	.073	.021	.140	.069	.020	.130	.066	.019		

pcc	80%			70%			50%			30%			10%			0
pw	50%	30%	10%	50%	30%	10%	50%	30%	10%	50%	30%	10%	50%	30%	10%	0
pfc	20%			20%			20%			20%			20%			0
RCR	RCR:Room Cavity Ratio						Ceiling Cavity Exitance Coefficients(CCEC)									
0.0	.329	.329	.329	.281	.281	.281	.192	.192	.192	.110	.110	.110	.035	.035	.035	
1.0	.325	.295	.268	.278	.253	.230	.190	.174	.159	.109	.101	.093	.035	.032	.030	
2.0	.318	.272	.233	.272	.234	.202	.187	.162	.141	.108	.094	.082	.035	.030	.027	
3.0	.310	.255	.212	.266	.220	.183	.183	.153	.129	.106	.089	.076	.034	.029	.025	
4.0	.303	.243	.197	.260	.210	.171	.179	.146	.121	.103	.086	.071	.033	.028	.023	
5.0	.295	.233	.187	.253	.202	.163	.174	.141	.115	.101	.083	.068	.033	.027	.023	
6.0	.287	.225	.180	.247	.195	.157	.170	.136	.111	.099	.080	.066	.032	.026	.022	
7.0	.280	.219	.175	.241	.189	.153	.167	.133	.108	.097	.078	.064	.031	.026	.021	
8.0	.274	.213	.171	.236	.185	.149	.163	.130	.106	.095	.077	.063	.031	.025	.021	
9.0	.267	.208	.168	.230	.181	.147	.160	.127	.104	.093	.075	.062	.030	.025	.021	
10.0	.262	.204	.166	.225	.177	.145	.156	.125	.103	.091	.074	.061	.030	.024	.020	

C Range: 0 - 360DEG
C Interval: 30.0DEG
Test Speed: HIGH
Temperature:25.3DEG
Operators:WFW
Test Date:2023-02-23

γ Range: 0 - 180DEG
γ Interval: 1.0DEG
Test System:EVERFINE GO-2000B_V1 SYSTEM V2.0.269
Humidity:65.0%
Test Distance:10.800m [K=1.0000]
Remarks:

Uncorrected UGR Table

Test:U:12.00V I:0.4823A P:5.788W PF:1.000 Lamp Flux:29.6979x1 lm											
NAME: SF21-12V-5050-60-W12-SPI4-3000K-R					TYPE:硅胶			WEIGHT:			
DIM.: 28MM*11.5MM					SPEC.:			SERIAL No.:20230223			
MFR.: OLYMPIA					SUR.:0.5*0.018			PROTECTION ANGLE:			
ceiling/cavity	0.7	0.7	0.5	0.5	0.3	0.7	0.7	0.5	0.5	0.3	
walls	0.5	0.3	0.5	0.3	0.3	0.5	0.3	0.5	0.3	0.3	
working plane	0.2	0.2	0.2	0.2	0.2	0.2	0.2	0.2	0.2	0.2	
Room dimensions	Viewed crosswise					Viewed endwise					
x = 2H y = 2H	3.2	4.6	3.8	5.1	5.7	1.5	2.9	2.0	3.4	3.9	
	3H	6.0	7.2	6.5	7.8	8.4	3.1	4.3	3.6	4.9	5.5
	4H	7.5	8.7	8.1	9.3	9.9	3.7	4.9	4.2	5.4	6.1
	6H	9.2	10.3	9.8	10.9	11.6	4.2	5.3	4.7	5.9	6.5
	8H	10.1	11.2	10.7	11.8	12.5	4.3	5.4	4.9	6.0	6.6
	12H	11.2	12.3	11.8	12.9	13.6	4.4	5.4	5.0	6.0	6.7
4H	2H	3.8	5.0	4.4	5.6	6.2	2.5	3.7	3.1	4.3	4.9
	3H	6.8	7.8	7.4	8.4	9.1	4.4	5.4	5.0	6.0	6.7
	4H	8.5	9.5	9.1	10.1	10.8	5.2	6.2	5.8	6.8	7.5
	6H	10.4	11.3	11.1	11.9	12.7	5.9	6.8	6.6	7.4	8.2
	8H	11.5	12.3	12.1	13.0	13.7	6.2	7.0	6.8	7.6	8.4
	12H	12.7	13.5	13.4	14.1	14.9	6.4	7.1	7.0	7.8	8.6
8H	4H	8.8	9.7	9.5	10.3	11.1	6.2	7.0	6.9	7.7	8.5
	6H	11.1	11.8	11.8	12.4	13.2	7.3	8.0	8.0	8.7	9.5
	8H	12.4	13.0	13.1	13.7	14.5	7.8	8.4	8.5	9.2	10.0
	12H	13.8	14.4	14.6	15.1	15.9	8.3	8.8	9.0	9.5	10.4
12H	4H	8.9	9.6	9.5	10.3	11.1	6.6	7.3	7.3	8.0	8.8
	6H	11.2	11.8	11.9	12.5	13.3	7.9	8.5	8.6	9.2	10.0
	8H	12.6	13.1	13.3	13.9	14.7	8.6	9.1	9.3	9.8	10.7
Variations with the observer position at spacings:											
S = 1.0H	+ 0.1 / - 0.1					+ 0.1 / - 0.1					
1.5H	+ 0.2 / - 0.2					+ 0.2 / - 0.3					
2.0H	+ 0.2 / - 0.3					+ 0.2 / - 0.4					

CIE Pub.117 Corrected 29.70 lm Total Lamp Luminous Flux. (8log(F/F0) = -12.2)

C Range: 0 - 360DEG
 C Interval: 30.0DEG
 Test Speed: HIGH
 Temperature:25.3DEG
 Operators:WFW
 Test Date:2023-02-23

γ Range: 0 - 180DEG
 γ Interval: 1.0DEG
 Test System:EVERFINE GO-2000B_V1 SYSTEM V2.0.269
 Humidity:65.0%
 Test Distance:10.800m [K=1.0000]
 Remarks:

UTILIZATION FACTORS TABLE

Test:U:12.00V I:0.4823A P:5.788W PF:1.000 Lamp Flux:29.6979x1 lm		
NAME: SF21-12V-5050-60-W12-SPI4-3000K-R	TYPE: 硅胶	WEIGHT:
DIM.: 28MM*11.5MM	SPEC.:	SERIAL No.:20230223
MFR.: OLYMPIA	SUR.:0.5*0.018	PROTECTION ANGLE:

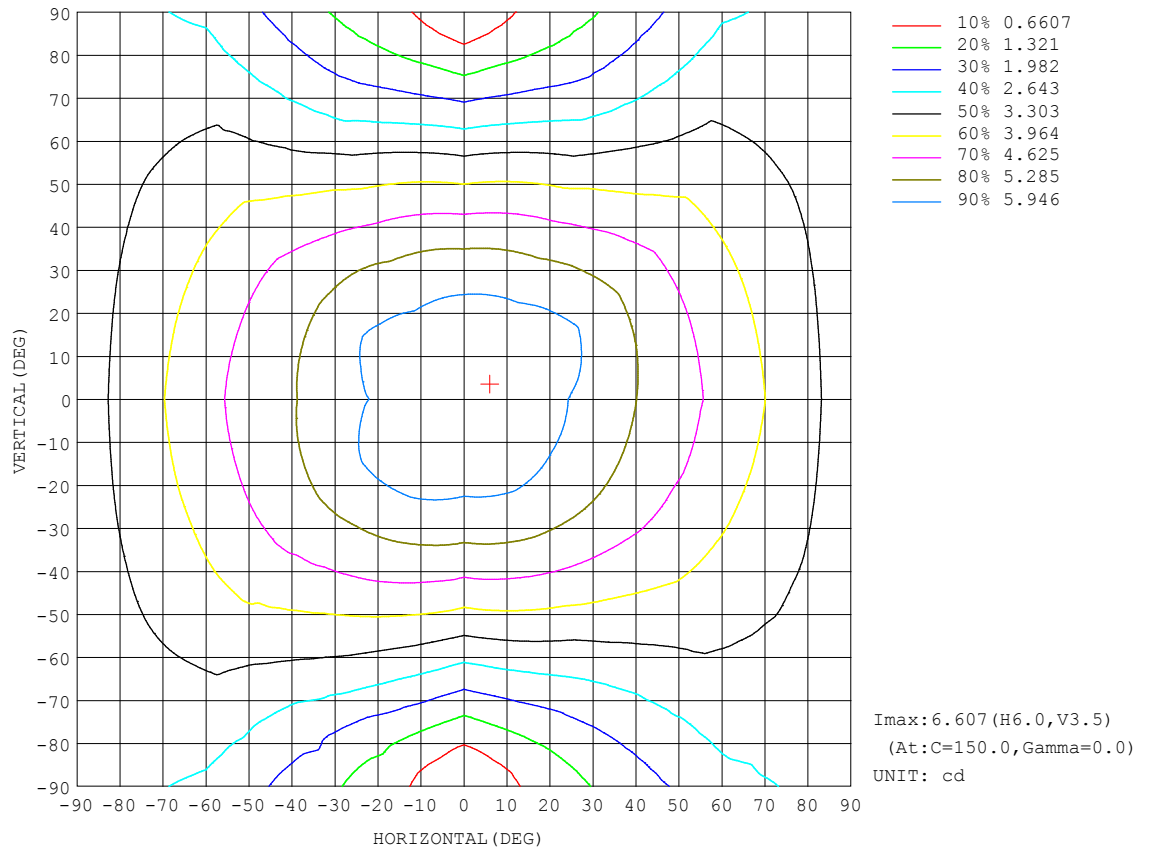
REFLECTANCE										
Ceiling	0.8	0.8	0.8	0.7	0.7	0.7	0.5	0.5	0.5	0
Walls	0.7	0.5	0.3	0.7	0.5	0.3	0.7	0.5	0.3	0
Working plane	0.2	0.2	0.2	0.2	0.2	0.2	0.2	0.2	0.2	0
ROOM INDEX	UTILIZATION FACTORS (PERCENT) $k(RI) \times RCR = 5$									
$k = 0.60$	48	35	28	47	35	28	45	34	28	21
0.80	57	44	36	55	43	36	53	42	35	27
1.00	65	52	43	63	51	43	59	51	42	33
1.25	72	59	50	69	58	50	65	55	48	38
1.50	77	64	56	74	63	55	69	60	53	42
2.00	84	73	65	81	71	63	75	67	60	49
2.50	88	78	70	85	76	68	79	71	65	52
3.00	92	83	75	89	80	73	82	75	69	56
4.00	97	89	82	93	86	80	86	80	75	61
5.00	100	93	87	96	90	84	88	83	79	64
ROOM INDEX	UF (total)									Direct
According to DIN EN 13032-2 2004			Suspended					SHRNM = 1.25		

C Range: 0 - 360DEG
C Interval: 30.0DEG
Test Speed: HIGH
Temperature:25.3DEG
Operators:WFW
Test Date:2023-02-23

γ Range: 0 - 180DEG
 γ Interval: 1.0DEG
Test System:EVERFINE GO-2000B_V1 SYSTEM V2.0.269
Humidity:65.0%
Test Distance:10.800m [K=1.0000]
Remarks:

ISOCANDELA DIAGRAM

Test:U:12.00V I:0.4823A P:5.788W PF:1.000 Lamp Flux:29.6979x1 lm		
NAME: SF21-12V-5050-60-W12-SPI4-3000K-R	TYPE: 硅胶	WEIGHT:
DIM.: 28MM*11.5MM	SPEC.:	SERIAL No.:20230223
MFR.: OLYMPIA	SUR.:0.5*0.018	PROTECTION ANGLE:

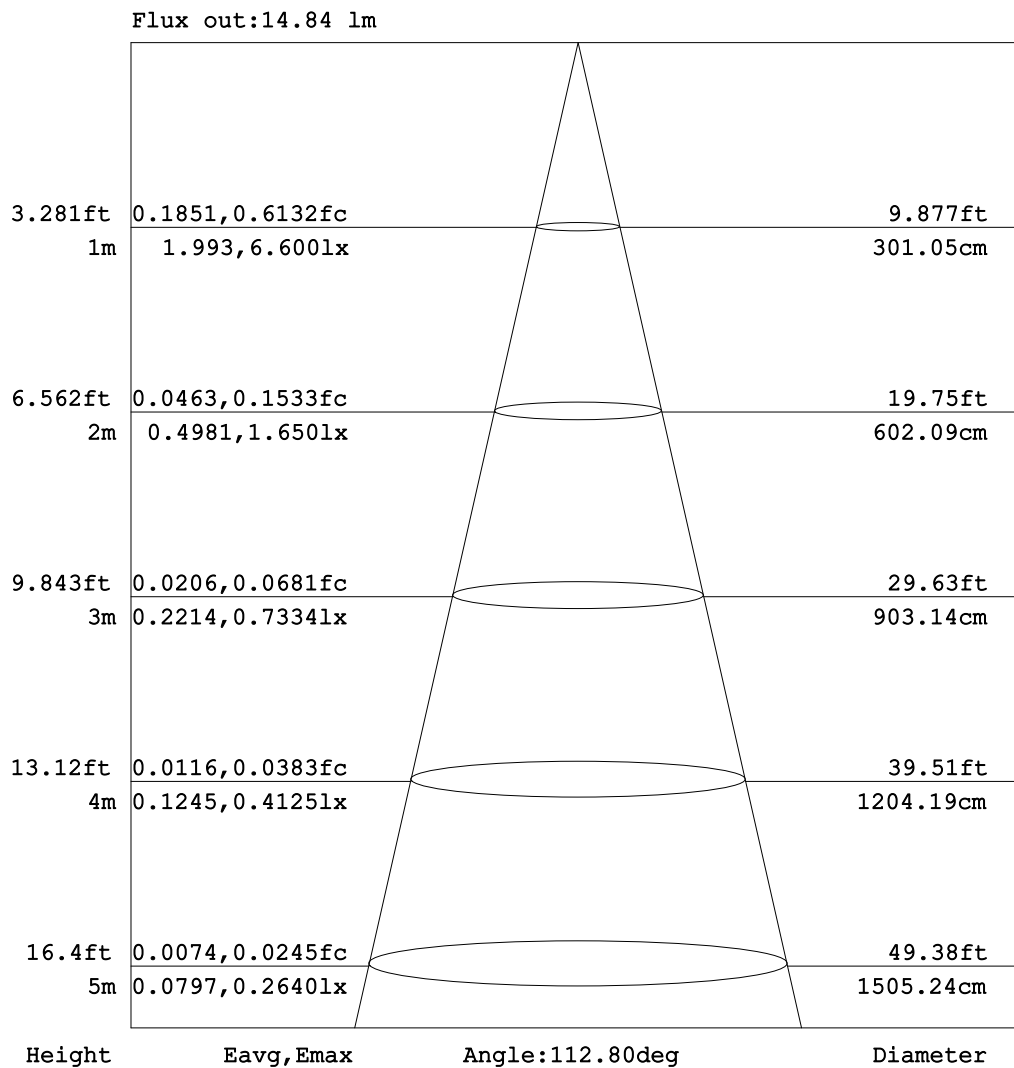


C Range: 0 - 360DEG
C Interval: 30.0DEG
Test Speed: HIGH
Temperature: 25.3DEG
Operators: WFW
Test Date: 2023-02-23

γ Range: 0 - 180DEG
 γ Interval: 1.0DEG
Test System: EVERFINE GO-2000B_V1 SYSTEM V2.0.269
Humidity: 65.0%
Test Distance: 10.800m [K=1.0000]
Remarks:

AAI Figure

Test:U:12.00V I:0.4823A P:5.788W PF:1.000 Lamp Flux:29.6979x1 lm		
NAME: SF21-12V-5050-60-W12-SPI4-3000K-R	TYPE: 硅胶	WEIGHT:
DIM.: 28MM*11.5MM	SPEC.:	SERIAL No.:20230223
MFR.: OLYMPIA	SUR.:0.5*0.018	PROTECTION ANGLE:



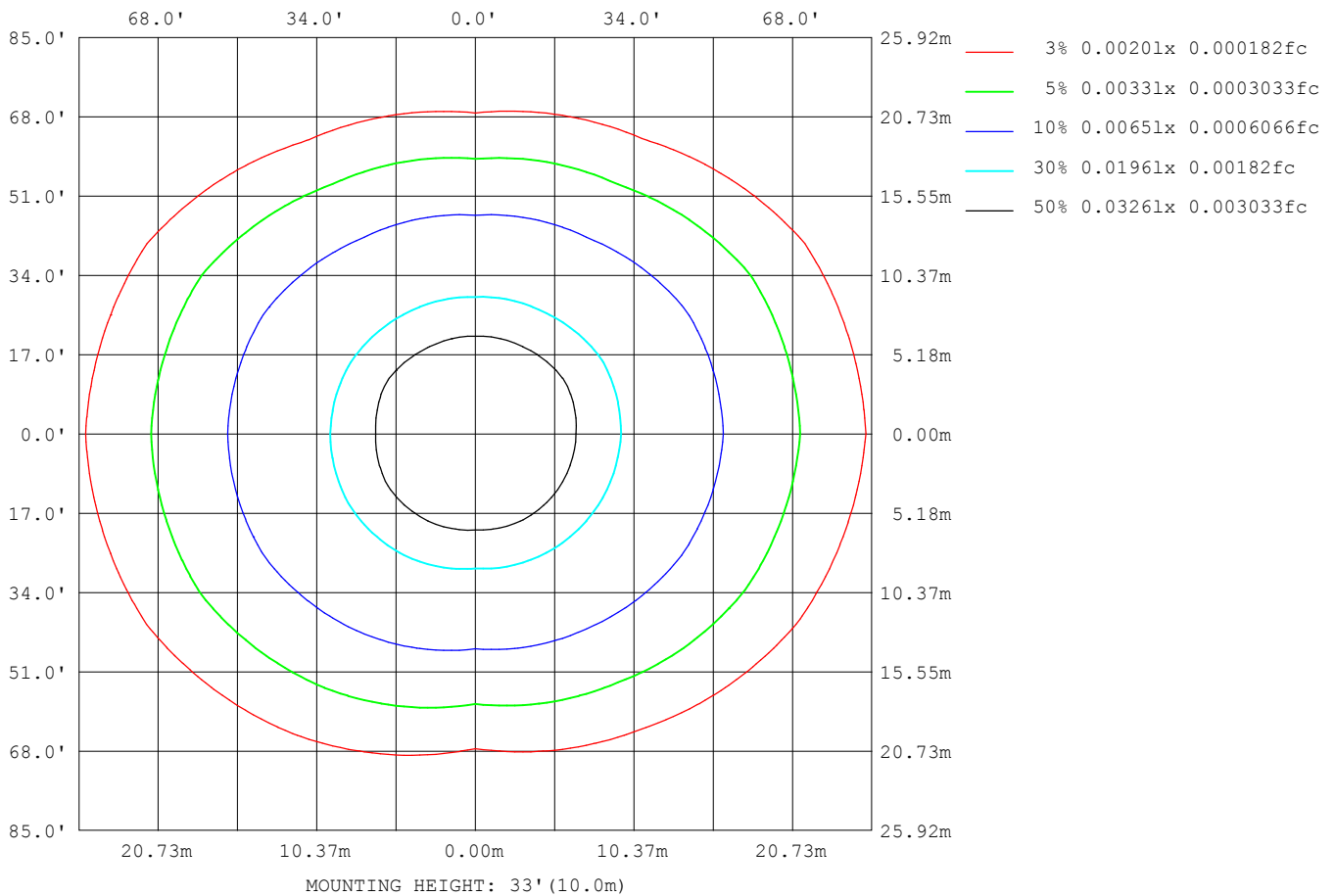
Note: The Curves indicate the illuminated area and the average illumination when the luminaire is at different distance.

C Range: 0 - 360DEG
C Interval: 30.0DEG
Test Speed: HIGH
Temperature: 25.3DEG
Operators: WFW
Test Date: 2023-02-23

γ Range: 0 - 180DEG
γ Interval: 1.0DEG
Test System: EVERFINE GO-2000B_V1 SYSTEM V2.0.269
Humidity: 65.0%
Test Distance: 10.800m [K=1.0000]
Remarks:

ISOLUX DIAGRAM

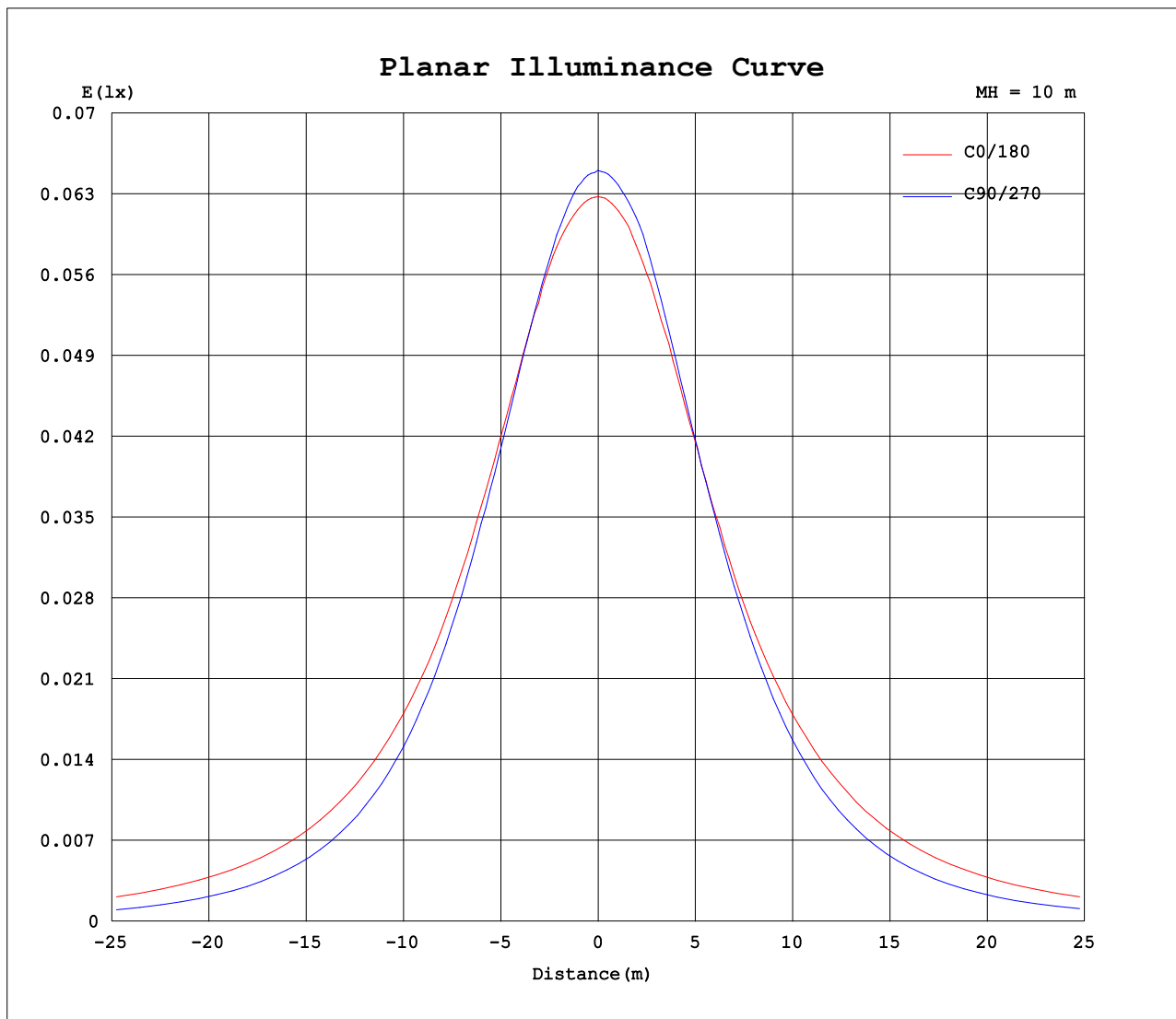
Test:U:12.00V I:0.4823A P:5.788W PF:1.000 Lamp Flux:29.6979x1 lm		
NAME: SF21-12V-5050-60-W12-SPI4-3000K-R	TYPE: 硅胶	WEIGHT:
DIM.: 28MM*11.5MM	SPEC.:	SERIAL No.:20230223
MFR.: OLYMPIA	SUR.:0.5*0.018	PROTECTION ANGLE:



C Range: 0 - 360DEG
C Interval: 30.0DEG
Test Speed: HIGH
Temperature:25.3DEG
Operators:WFW
Test Date:2023-02-23

γ Range: 0 - 180DEG
 γ Interval: 1.0DEG
Test System:EVERFINE GO-2000B_V1 SYSTEM V2.0.269
Humidity:65.0%
Test Distance:10.800m [K=1.0000]
Remarks:

Planar Illuminance Curve



C Range: 0 - 360DEG
C Interval: 30.0DEG
Test Speed: HIGH
Temperature: 25.3DEG
Operators: WFW
Test Date: 2023-02-23

γ Range: 0 - 180DEG
 γ Interval: 1.0DEG
Test System: EVERFINE GO-2000B_V1 SYSTEM V2.0.269
Humidity: 65.0%
Test Distance: 10.800m [K=1.0000]
Remarks:

LUMINOUS DISTRIBUTION INTENSITY DATA

Test:U:12.00V I:0.4823A P:5.788W PF:1.000 Lamp Flux:29.6979x1 lm		
NAME: SF21-12V-5050-60-W12-SPI4-3000K-R	TYPE: 硅胶	WEIGHT:
DIM.: 28MM*11.5MM	SPEC.:	SERIAL No.:20230223
MFR.: OLYMPIA	SUR.:0.5*0.018	PROTECTION ANGLE:

Table--1

UNIT: cd

C (DEG) γ (DEG)	0	30	60	90	120	150	180	210	240	270	300	330						
0	6.27	6.36	6.47	6.50	6.55	6.60	6.27	6.36	6.47	6.50	6.55	6.60						
5	6.27	6.36	6.46	6.47	6.56	6.59	6.26	6.36	6.43	6.48	6.52	6.60						
10	6.25	6.30	6.42	6.39	6.52	6.50	6.21	6.35	6.39	6.45	6.48	6.57						
15	6.20	6.22	6.30	6.25	6.40	6.40	6.14	6.32	6.26	6.37	6.37	6.52						
20	6.07	6.07	6.14	6.06	6.22	6.26	6.02	6.19	6.09	6.16	6.20	6.39						
25	5.92	5.89	5.92	5.81	5.99	6.07	5.84	6.04	5.89	5.91	5.98	6.21						
30	5.74	5.69	5.65	5.51	5.72	5.84	5.65	5.85	5.64	5.63	5.70	6.00						
35	5.53	5.44	5.33	5.15	5.40	5.60	5.45	5.67	5.36	5.28	5.39	5.73						
40	5.29	5.15	4.97	4.74	5.06	5.28	5.25	5.24	5.01	4.89	5.05	5.45						
45	5.10	4.86	4.57	4.28	4.73	5.03	5.07	4.97	4.62	4.44	4.67	5.13						
50	4.88	4.60	4.15	3.81	4.34	4.81	4.88	4.74	4.22	3.96	4.26	4.86						
55	4.65	4.32	3.71	3.30	3.92	4.50	4.66	4.47	3.80	3.46	3.80	4.56						
60	4.43	4.04	3.28	2.78	3.53	4.24	4.43	4.20	3.34	2.93	3.32	4.25						
65	4.21	3.75	2.88	2.25	3.14	3.95	4.19	3.91	2.86	2.40	2.89	3.96						
70	3.97	3.48	2.49	1.70	2.74	3.66	3.95	3.64	2.47	1.88	2.48	3.66						
75	3.73	3.22	2.15	1.17	2.24	3.38	3.70	3.35	2.10	1.34	2.10	3.39						
80	3.47	2.95	1.84	0.70	1.89	3.10	3.46	3.10	1.79	0.86	1.79	3.12						
85	3.21	2.70	1.58	0.29	1.62	2.83	3.18	2.81	1.50	0.46	1.50	2.85						
90	2.92	2.42	1.34	0.13	1.39	2.54	2.89	2.54	1.26	0.26	1.27	2.57						
95	2.64	2.13	1.12	0.12	1.29	2.26	2.59	2.26	1.11	0.24	1.06	2.29						
100	2.36	1.83	0.87	0.10	1.22	2.01	2.32	2.02	0.98	0.21	0.82	2.06						
105	2.11	1.59	0.71	0.09	1.09	1.77	2.06	1.78	0.89	0.19	0.67	1.58						
110	1.78	1.24	0.63	0.08	0.96	1.54	1.81	1.56	0.83	0.18	0.60	1.39						
115	1.55	1.15	0.60	0.08	0.78	1.39	1.59	1.39	0.75	0.17	0.51	1.25						
120	1.35	0.98	0.56	0.08	0.69	1.20	1.40	1.23	0.64	0.16	0.48	1.09						
125	1.16	0.87	0.49	0.08	0.59	1.06	1.26	1.08	0.49	0.14	0.41	0.96						
130	1.06	0.76	0.43	0.07	0.50	0.92	1.07	0.94	0.39	0.12	0.34	0.85						
135	0.90	0.63	0.35	0.07	0.42	0.78	0.93	0.81	0.30	0.10	0.28	0.73						
140	0.74	0.52	0.28	0.07	0.35	0.65	0.77	0.70	0.26	0.08	0.21	0.57						
145	0.60	0.39	0.24	0.07	0.28	0.53	0.63	0.58	0.19	0.08	0.17	0.46						
150	0.51	0.30	0.20	0.07	0.24	0.40	0.51	0.45	0.15	0.06	0.10	0.36						
155	0.42	0.22	0.16	0.06	0.16	0.30	0.39	0.35	0.08	0.06	0.10	0.28						
160	0.31	0.15	0.14	0.06	0.12	0.21	0.28	0.28	0.07	0.06	0.10	0.19						
165	0.22	0.08	0.12	0.06	0.11	0.15	0.17	0.17	0.07	0.05	0.10	0.12						
170	0.12	0.08	0.10	0.08	0.09	0.08	0.08	0.11	0.06	0.05	0.10	0.11						
175	0.09	0.08	0.08	0.07	0.08	0.08	0.08	0.08	0.06	0.07	0.08	0.09						
180	0.08	0.07	0.08	0.07	0.08	0.08	0.08	0.08	0.06	0.08	0.08	0.08						

C Range: 0 - 360DEG
C Interval: 30.0DEG
Test Speed: HIGH
Temperature:25.3DEG
Operators:WFW
Test Date:2023-02-23

γ Range: 0 - 180DEG
γ Interval: 1.0DEG
Test System:EVERFINE GO-2000B_V1 SYSTEM V2.0.269
Humidity:65.0%
Test Distance:10.800m [K=1.0000]
Remarks:

Photometric Data Table [cd]

G/C	0.0	30.0	60.0	90.0	120.0	150.0	180.0	210.0	240.0	270.0
0.0	6.275	6.365	6.469	6.503	6.552	6.600	6.275	6.365	6.469	6.503
3.0	6.275	6.365	6.476	6.489	6.566	6.600	6.268	6.365	6.462	6.496
6.0	6.264	6.358	6.458	6.469	6.559	6.593	6.254	6.359	6.427	6.478
9.0	6.254	6.309	6.441	6.413	6.552	6.524	6.240	6.352	6.399	6.460
12.0	6.240	6.261	6.393	6.351	6.483	6.469	6.178	6.346	6.378	6.441
15.0	6.199	6.219	6.296	6.254	6.400	6.399	6.143	6.323	6.261	6.365
18.0	6.129	6.143	6.206	6.143	6.303	6.330	6.046	6.254	6.164	6.247
21.0	6.047	6.039	6.102	6.025	6.178	6.260	5.970	6.171	6.046	6.109
24.0	5.956	5.935	5.957	5.866	6.040	6.122	5.873	6.088	5.921	5.964
27.0	5.853	5.838	5.811	5.699	5.888	5.983	5.789	5.970	5.803	5.804
30.0	5.742	5.693	5.652	5.513	5.721	5.838	5.651	5.853	5.637	5.631
33.0	5.611	5.547	5.465	5.305	5.528	5.699	5.527	5.763	5.491	5.424
36.0	5.486	5.388	5.258	5.076	5.327	5.513	5.388	5.610	5.277	5.209
39.0	5.334	5.215	5.043	4.826	5.119	5.367	5.277	5.327	5.076	4.960
42.0	5.215	5.041	4.814	4.584	4.946	5.173	5.180	5.119	4.854	4.710
45.0	5.098	4.861	4.572	4.279	4.731	5.035	5.069	4.973	4.619	4.440
48.0	4.973	4.702	4.323	3.995	4.489	4.910	4.958	4.841	4.376	4.156
51.0	4.835	4.550	4.066	3.697	4.253	4.730	4.848	4.682	4.147	3.866
54.0	4.710	4.397	3.803	3.407	4.004	4.584	4.695	4.537	3.871	3.568
57.0	4.565	4.210	3.540	3.088	3.755	4.391	4.584	4.371	3.594	3.256
60.0	4.433	4.037	3.277	2.776	3.526	4.245	4.425	4.198	3.337	2.930
63.0	4.288	3.871	3.041	2.458	3.305	4.051	4.293	4.031	3.053	2.626
66.0	4.149	3.705	2.799	2.125	3.062	3.899	4.155	3.851	2.770	2.293
69.0	4.017	3.532	2.570	1.807	2.820	3.712	3.996	3.692	2.534	1.989
72.0	3.872	3.386	2.342	1.481	2.543	3.539	3.843	3.533	2.312	1.670
75.0	3.727	3.220	2.148	1.170	2.239	3.379	3.698	3.346	2.098	1.345
78.0	3.574	3.061	1.954	0.8719	2.030	3.213	3.566	3.207	1.925	1.061
81.0	3.429	2.901	1.781	0.5880	1.850	3.047	3.386	3.048	1.731	0.7832
84.0	3.263	2.749	1.621	0.3732	1.678	2.887	3.241	2.875	1.571	0.5410
87.0	3.096	2.610	1.476	0.1800	1.517	2.708	3.061	2.715	1.406	0.3537
90.0	2.923	2.424	1.344	0.1316	1.392	2.541	2.894	2.542	1.260	0.2564
93.0	2.750	2.257	1.198	0.1269	1.302	2.368	2.707	2.376	1.142	0.2562
96.0	2.584	2.070	1.054	0.1096	1.282	2.202	2.541	2.224	1.108	0.2287
99.0	2.418	1.883	0.8797	0.0970	1.233	2.064	2.375	2.085	1.018	0.2120
102.0	2.251	1.738	0.8106	0.0900	1.164	1.932	2.209	1.919	0.9472	0.2012
105.0	2.106	1.592	0.7137	0.0900	1.094	1.766	2.063	1.780	0.8933	0.1934
108.0	1.954	1.350	0.6651	0.0830	1.032	1.627	1.918	1.649	0.8793	0.1877
111.0	1.725	1.221	0.6234	0.0762	0.9147	1.510	1.759	1.524	0.8310	0.1831
114.0	1.593	1.167	0.6095	0.0762	0.8105	1.392	1.634	1.413	0.7618	0.1732
117.0	1.476	1.066	0.5749	0.0762	0.7413	1.295	1.509	1.323	0.7064	0.1672
120.0	1.351	0.9833	0.5611	0.0762	0.6928	1.198	1.399	1.226	0.6370	0.1583
123.0	1.240	0.9210	0.5127	0.0762	0.6374	1.115	1.302	1.136	0.5192	0.1436
126.0	1.136	0.8449	0.4780	0.0830	0.5750	1.039	1.191	1.060	0.4499	0.1316
129.0	1.087	0.7961	0.4364	0.0693	0.5198	0.9349	1.101	0.9767	0.3947	0.1315
132.0	1.005	0.7270	0.3880	0.0693	0.4573	0.8586	1.018	0.9005	0.3530	0.1109
135.0	0.9008	0.6301	0.3533	0.0693	0.4156	0.7824	0.9275	0.8106	0.3045	0.0970
138.0	0.7968	0.5608	0.3186	0.0693	0.3672	0.7062	0.8377	0.7481	0.2795	0.0900
141.0	0.7069	0.4986	0.2634	0.0693	0.3395	0.6299	0.7407	0.6721	0.2353	0.0831
144.0	0.6306	0.4360	0.2357	0.0693	0.2980	0.5607	0.6645	0.5959	0.2007	0.0762
147.0	0.5750	0.3944	0.2218	0.0693	0.2771	0.4845	0.5952	0.5197	0.1675	0.0693
150.0	0.5127	0.3046	0.2010	0.0693	0.2425	0.4015	0.5054	0.4502	0.1506	0.0623
153.0	0.4503	0.2630	0.1734	0.0623	0.1871	0.3323	0.4290	0.3880	0.0899	0.0623
156.0	0.3950	0.2008	0.1661	0.0623	0.1661	0.2838	0.3391	0.3394	0.0762	0.0623
159.0	0.3327	0.1524	0.1386	0.0623	0.1318	0.2422	0.2770	0.2910	0.0693	0.0623
162.0	0.2841	0.1381	0.1318	0.0623	0.1100	0.1868	0.2214	0.2357	0.0693	0.0623
165.0	0.2151	0.0831	0.1178	0.0623	0.1073	0.1452	0.1659	0.1663	0.0693	0.0487
168.0	0.1665	0.0762	0.1108	0.0623	0.1047	0.0831	0.0831	0.1247	0.0693	0.0485
171.0	0.1110	0.0762	0.1107	0.0762	0.0900	0.0831	0.0831	0.1039	0.0623	0.0554
174.0	0.0900	0.0762	0.0900	0.0693	0.0831	0.0831	0.0831	0.0831	0.0623	0.0693
177.0	0.0831	0.0762	0.0831	0.0693	0.0831	0.0831	0.0831	0.0831	0.0623	0.0762
180.0	0.0762	0.0693	0.0762	0.0693	0.0831	0.0831	0.0762	0.0762	0.0623	0.0831
G/C	300.0	330.0								
0.0	6.552	6.600								
3.0	6.531	6.600								
6.0	6.510	6.595								
9.0	6.489	6.578								
12.0	6.434	6.566								
15.0	6.372	6.517								
18.0	6.275	6.441								
21.0	6.157	6.351								
24.0	6.025	6.247								
27.0	5.872	6.143								
30.0	5.699	5.998								

C Range: 0 - 360DEG
 C Interval: 30.0DEG
 Test Speed: HIGH
 Temperature: 25.3DEG
 Operators: WFW
 Test Date: 2023-02-23

γ Range: 0 - 180DEG
 γ Interval: 1.0DEG
 Test System: EVERFINE GO-2000B_V1 SYSTEM V2.0.269
 Humidity: 65.0%
 Test Distance: 10.800m [K=1.0000]
 Remarks:

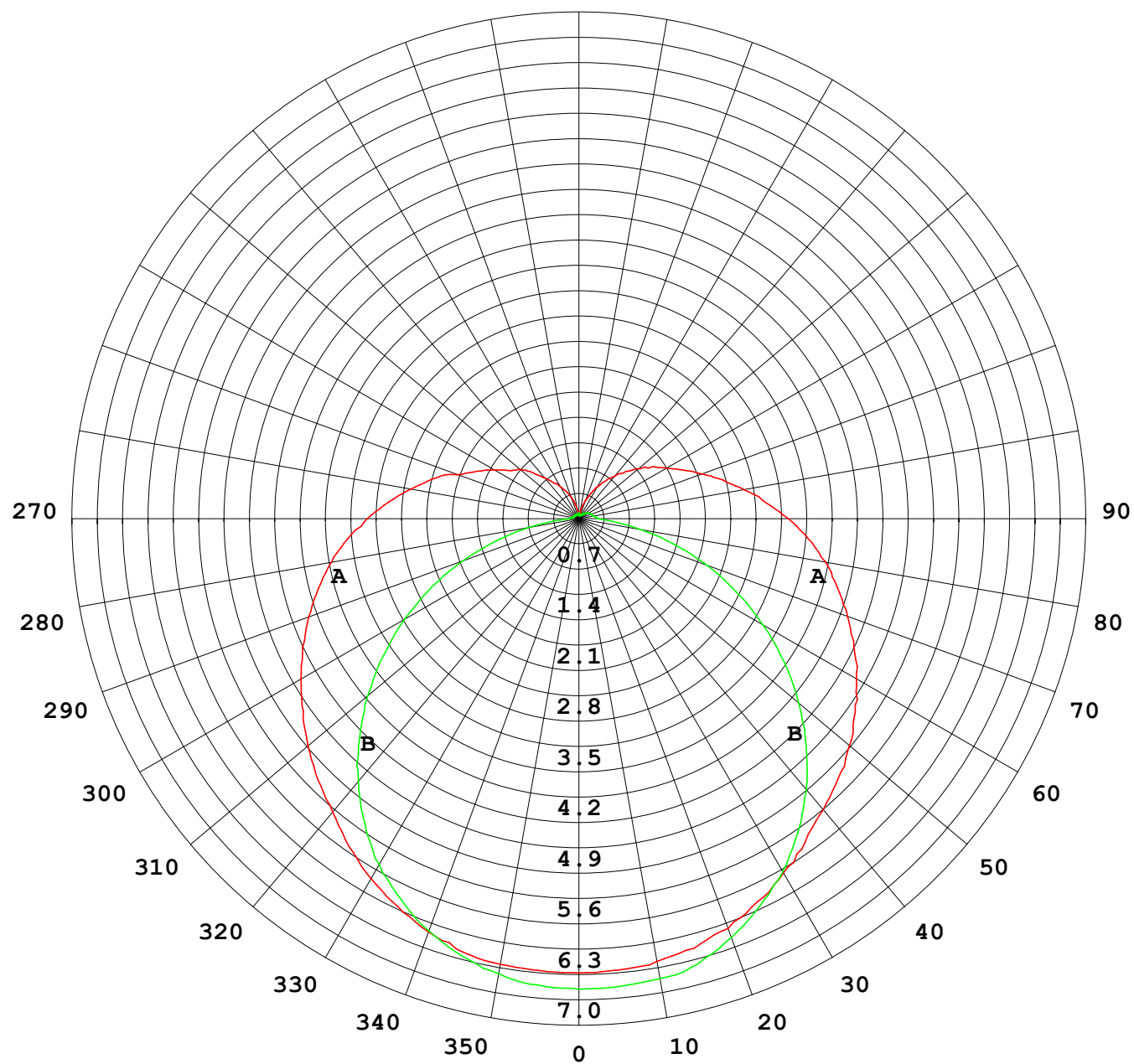
Photometric Data Table [cd]

33.0	5.533	5.839
36.0	5.325	5.686
39.0	5.138	5.507
42.0	4.916	5.320
45.0	4.667	5.132
48.0	4.404	4.959
51.0	4.161	4.786
54.0	3.878	4.606
57.0	3.594	4.433
60.0	3.316	4.246
63.0	3.060	4.073
66.0	2.804	3.900
69.0	2.562	3.720
72.0	2.319	3.560
75.0	2.098	3.394
78.0	1.924	3.228
81.0	1.731	3.069
84.0	1.564	2.902
87.0	1.406	2.729
90.0	1.267	2.570
93.0	1.155	2.404
96.0	1.031	2.244
99.0	0.8516	2.106
102.0	0.7340	1.892
105.0	0.6714	1.577
108.0	0.6094	1.465
111.0	0.5609	1.351
114.0	0.5261	1.288
117.0	0.4986	1.185
120.0	0.4844	1.087
123.0	0.4293	1.004
126.0	0.4028	0.9352
129.0	0.3736	0.8729
132.0	0.3253	0.8106
135.0	0.2838	0.7344
138.0	0.2145	0.6513
141.0	0.2021	0.5473
144.0	0.1799	0.4850
147.0	0.1175	0.4158
150.0	0.0970	0.3603
153.0	0.0970	0.3118
156.0	0.0970	0.2564
159.0	0.0970	0.2079
162.0	0.0970	0.1663
165.0	0.0970	0.1248
168.0	0.0900	0.1122
171.0	0.0831	0.1039
174.0	0.0831	0.0970
177.0	0.0831	0.0831
180.0	0.0831	0.0831

C Range: 0 - 360DEG
C Interval: 30.0DEG
Test Speed: HIGH
Temperature:25.3DEG
Operators:WFW
Test Date:2023-02-23

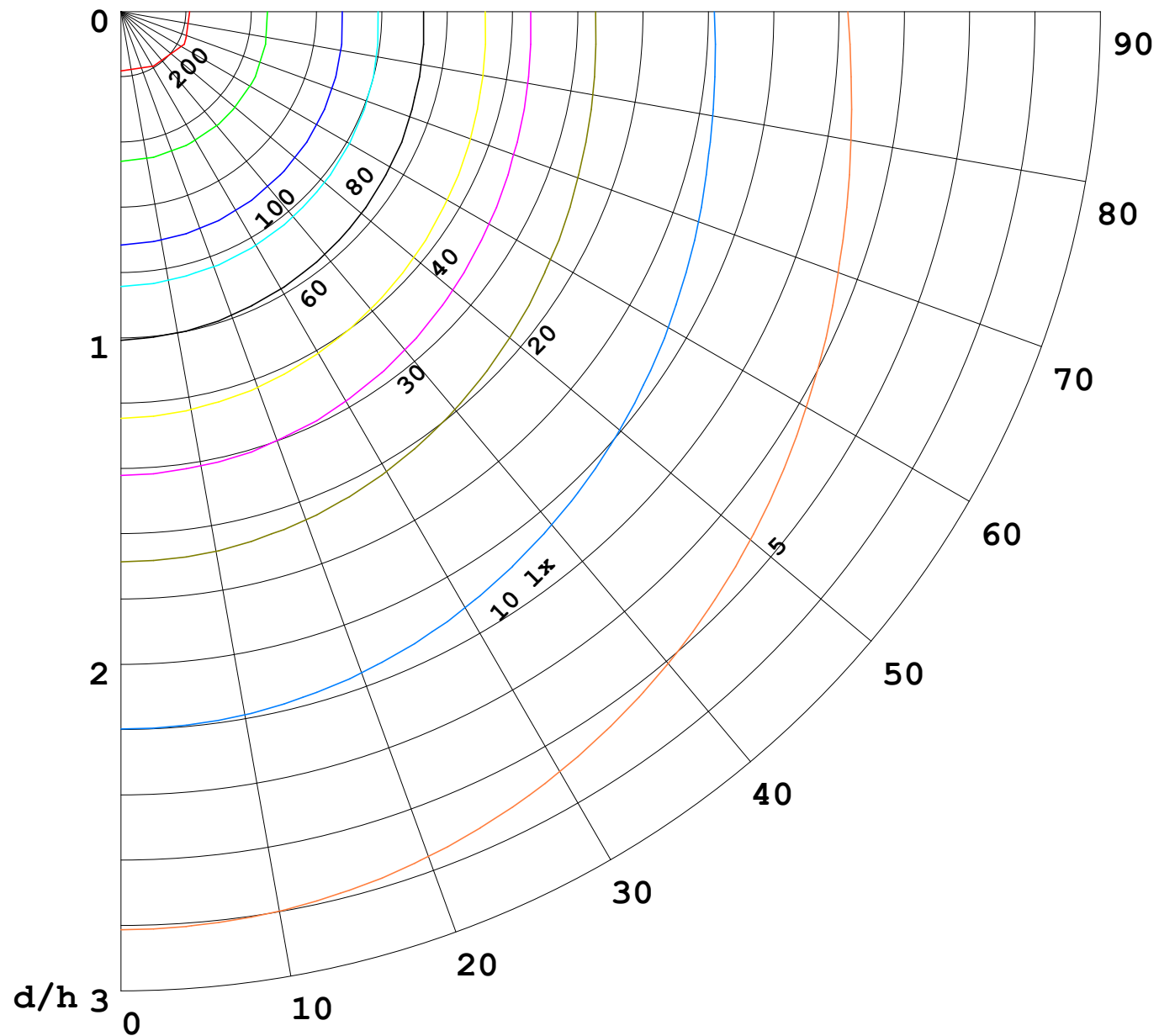
γ Range: 0 - 180DEG
γ Interval: 1.0DEG
Test System:EVERFINE GO-2000B_V1 SYSTEM V2.0.269
Humidity:65.0%
Test Distance:10.800m [K=1.0000]
Remarks:

I (cd)



1000 lm

$\kappa = 1$



F = 5000 lm
 K = 0.7
 Hcc = 0.0 m
 Hfc = 0.0 m
 Eave = 100 lx

	Pcc	Pw	Pfc
—	70	50	30
—	50	30	20

