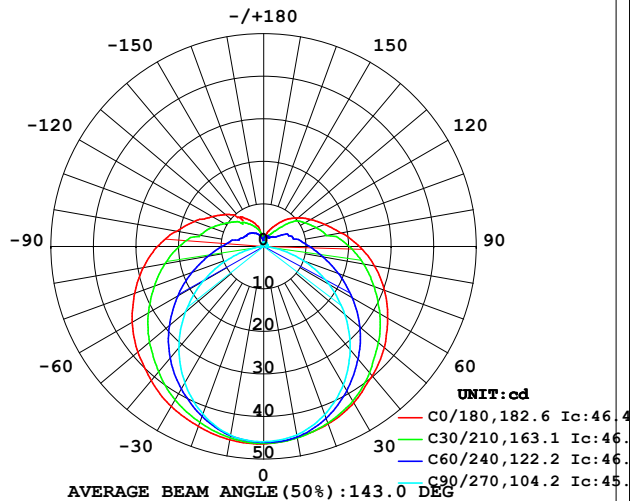


## LUMINAIRE PHOTOMETRIC TEST REPORT

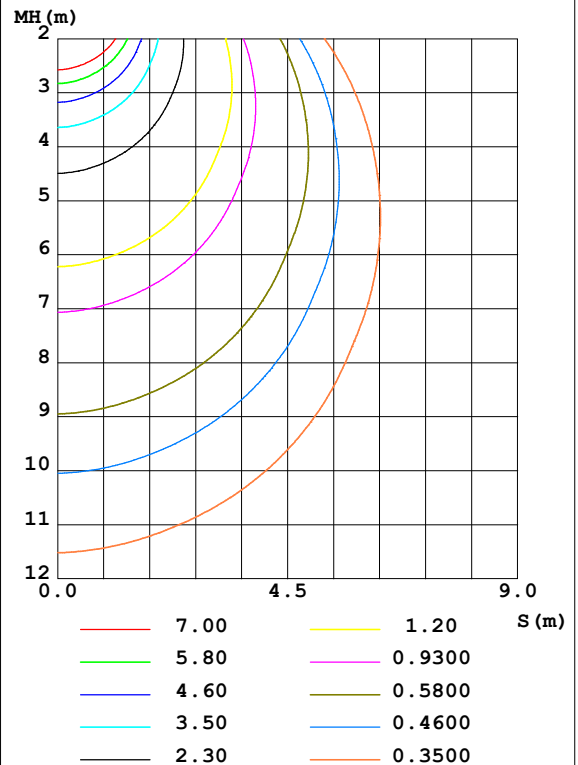
Test:U:24.00V I:0.4224A P:10.14W PF:1.000 Freq:50.00Hz Lamp Flux:224.445x1 lm		
NAME: SF21-24V-2835-72-CC-G	TYPE: 硅胶	WEIGHT:
SPEC.:	DIM.: 28mm*11.5mm	SERIAL No.:2021120805
MFR.: OLYMPIA	SUR.:1*0.016	Shielding Angle:

DATA OF LAMP		PHOTOMETRIC DATA Eff: 22.14 lm/W			
MODEL	2835	I <sub>max</sub> (cd)	46.43	S/MH (C0/180)	1.41
NOMINAL POWER (W)	10	LOR (%)	100.0	S/MH (C90/270)	1.21
RATED VOLTAGE (V)	24	TOTAL FLUX (lm)	224.45	η UP, DN (C0-180)	10.5, 38.5
NOMINAL FLUX (lm)	224.445	CIE CLASS	SEMI-D.	η UP, DN (C180-360)	11.4, 39.5
LAMPS INSIDE	1	η up (%)	22.0	CIBSE SHR NOM	1.50
TEST VOLTAGE (V)	24	η down (%)	78.0	CIBSE SHR MAX	1.55

LUMINOUS INTENSITY DISTRIBUTION DIAGRAM



C0 PLANE ISOLUX DIAGRAM (UNIT: lx)



C Range: 0 - 360DEG  
C Interval: 30.0DEG  
Test Speed: HIGH  
Temperature: 25.3DEG  
Operators: LPC  
Test Date: 2021-12-08

γ Range: 0 - 180DEG  
γ Interval: 1.0DEG  
Test System: EVERFINE GO-2000B\_V1 SYSTEM V2.0.362  
Humidity: 65.0%  
Test Distance: 9.200m [K=1.0000]  
Remarks:

## ZONAL FLUX DIAGRAM

## ZONAL FLUX DIAGRAM:

$\gamma$	C0	C45	C90	C135	C180	C225	C270	C315	$\gamma$	$\Phi$ zone	$\Phi$ total	%lum, lamp
10	45.60	45.60	44.99	44.71	46.13	45.42	45.03	45.51	0- 10	4.362	4.362	1.94,1.94
20	44.40	43.59	42.07	42.45	44.99	43.23	41.87	43.52	10- 20	12.55	16.91	7.54,7.54
30	42.41	40.53	37.50	39.31	43.45	40.18	37.03	40.60	20- 30	19.28	36.20	16.1,16.1
40	39.70	36.63	31.62	35.35	41.14	36.35	31.02	37.13	30- 40	23.96	60.16	26.8,26.8
50	37.01	32.38	24.86	30.99	38.63	31.99	24.08	33.00	40- 50	26.30	86.45	38.5,38.5
60	33.68	27.76	17.67	26.29	35.69	27.31	16.52	28.62	50- 60	26.33	112.8	50.2,50.2
70	30.21	23.21	10.13	21.70	32.29	22.64	8.811	24.04	60- 70	24.28	137.1	61.1,61.1
80	26.49	19.01	3.338	17.60	28.74	18.42	2.436	19.84	70- 80	20.87	157.9	70.4,70.4
90	22.51	15.45	0.6333	14.12	24.97	14.85	0.4489	16.30	80- 90	17.18	175.1	78,78
100	18.45	11.78	0.7241	10.88	20.78	11.51	0.5323	12.63	90-100	13.97	189.1	84.2,84.2
110	15.27	10.10	0.7860	8.911	17.31	9.429	0.5887	10.60	100-110	10.78	199.8	89,89
120	12.76	8.529	0.8393	7.397	14.03	7.911	0.6131	8.745	110-120	8.454	208.3	92.8,92.8
130	10.49	6.334	0.8856	6.400	11.70	6.871	0.6885	6.752	120-130	6.369	214.7	95.6,95.6
140	8.285	4.313	0.9449	5.367	8.838	5.777	0.7739	5.041	130-140	4.433	219.1	97.6,97.6
150	5.892	2.920	1.049	4.289	7.361	4.762	0.9196	3.868	140-150	2.794	221.9	98.9,98.9
160	4.103	2.524	1.074	3.106	5.536	3.636	0.9699	3.152	150-160	1.624	223.5	99.6,99.6
170	1.740	2.269	1.059	1.825	2.284	2.482	1.006	2.780	160-170	0.7507	224.3	99.9,99.9
180	1.106	1.103	1.055	1.093	1.136	1.113	1.025	1.088	170-180	0.1726	224.4	100,100
DEG	LUMINOUS INTENSITY:cd									UNIT:lm		

Conical surface Flux(90deg): 73.159 lm

%lum = 32.6%

%lamp = 32.6%

Conical surface Flux(120deg): 112.78 lm

%lum = 50.2%

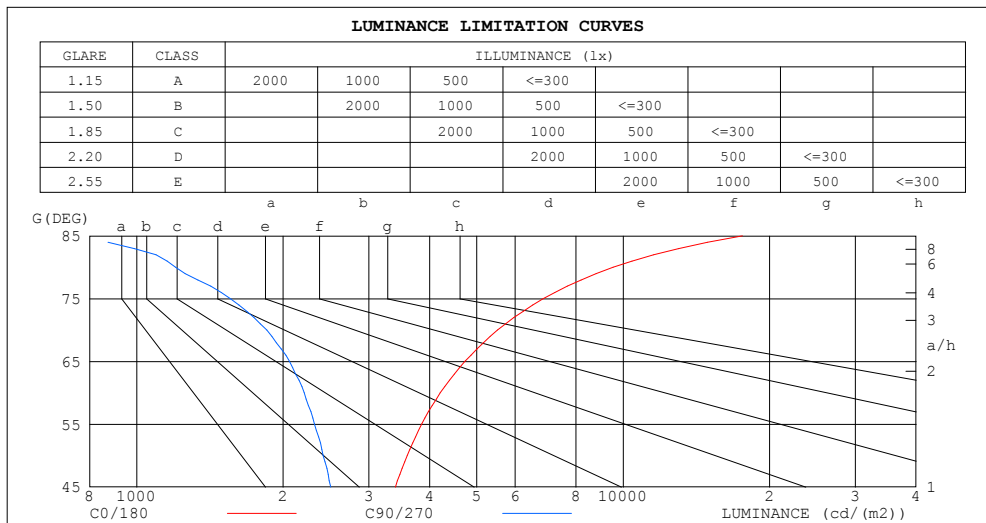
%lamp = 50.2%

C Range: 0 - 360DEG  
 C Interval: 30.0DEG  
 Test Speed: HIGH  
 Temperature:25.3DEG  
 Operators:LPC  
 Test Date:2021-12-08

$\gamma$  Range: 0 - 180DEG  
 $\gamma$  Interval: 1.0DEG  
 Test System:EVERFINE GO-2000B\_V1 SYSTEM V2.0.362  
 Humidity:65.0%  
 Test Distance:9.200m [K=1.0000]  
 Remarks:

## LUMINANCE LIMITATION CURVES

Test:U:24.00V I:0.4224A P:10.14W PF:1.000 Freq:50.00Hz Lamp Flux:224.445x1 lm		
NAME: SF21-24V-2835-72-CC-G	TYPE: 硅胶	WEIGHT:
SPEC.:	DIM.: 28mm*11.5mm	SERIAL No.:2021120805
MFR.: OLYMPIA	SUR.:1*0.016	Shielding Angle:



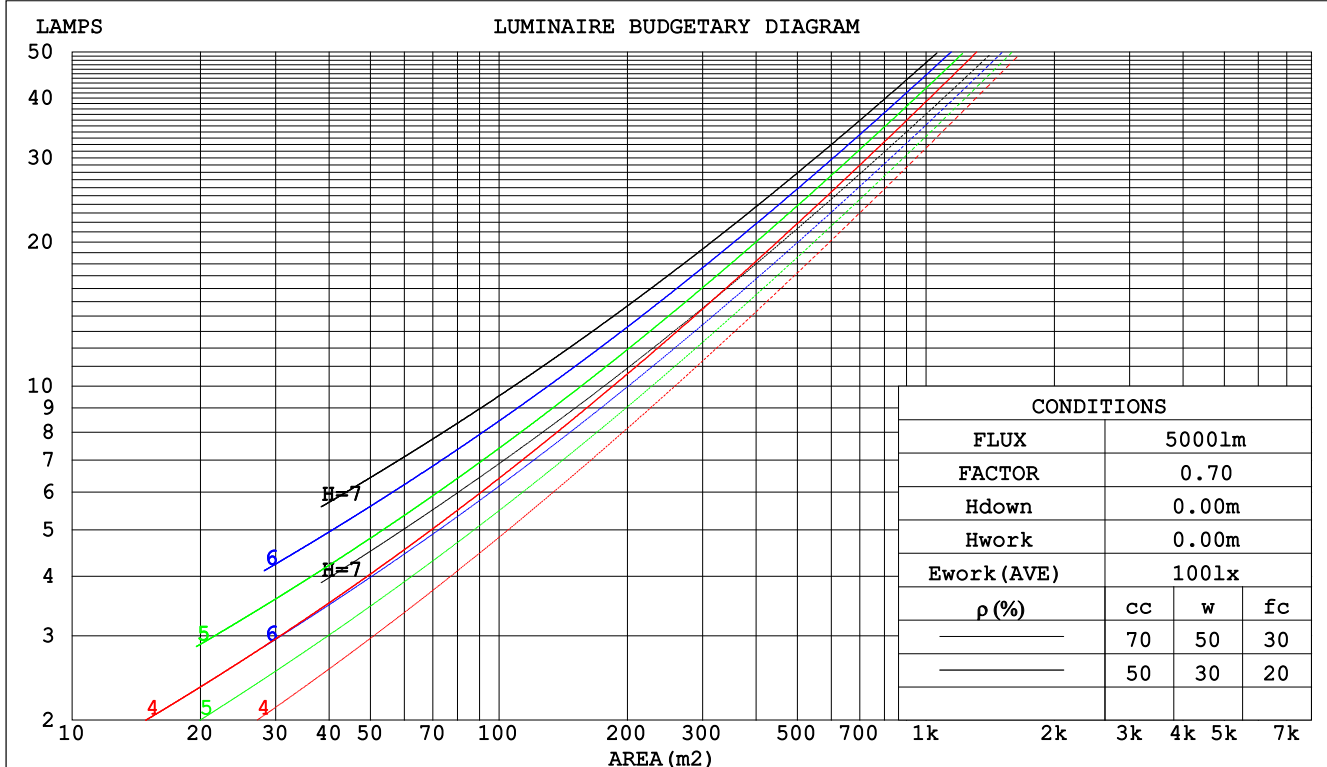
C Range: 0 - 360DEG  
C Interval: 30.0DEG  
Test Speed: HIGH  
Temperature:25.3DEG  
Operators:LPC  
Test Date:2021-12-08

$\gamma$  Range: 0 - 180DEG  
 $\gamma$  Interval: 1.0DEG  
Test System:EVERFINE GO-2000B\_V1 SYSTEM V2.0.362  
Humidity:65.0%  
Test Distance:9.200m [K=1.0000]  
Remarks:

## CU AND LUMINAIRE BUDGETARY ESTIMATE DIAGRAM

Test:U:24.00V I:0.4224A P:10.14W PF:1.000 Freq:50.00Hz Lamp Flux:224.445x1 lm		
NAME: SF21-24V-2835-72-CC-G	TYPE: 硅胶	WEIGHT:
SPEC.:	DIM.: 28mm*11.5mm	SERIAL No.:2021120805
MFR.: OLYMPIA	SUR.:1*0.016	Shielding Angle:

pcc	80%			70%			50%			30%			10%			0
pw	50%	30%	10%	50%	30%	10%	50%	30%	10%	50%	30%	10%	50%	30%	10%	0
pfc	20%			20%			20%			20%			20%			0
RCR	RCR:Room Cavity Ratio						Coefficients of Utilization(CU)									
0.0	1.14	1.14	1.14	1.09	1.09	1.09	.99	.99	.99	.90	.90	.90	.82	.82	.82	.78
1.0	.95	.89	.84	.90	.85	.81	.82	.78	.74	.74	.71	.68	.67	.65	.62	.59
2.0	.81	.73	.66	.77	.70	.64	.70	.64	.59	.63	.59	.54	.57	.53	.50	.47
3.0	.70	.61	.54	.67	.59	.52	.61	.54	.48	.55	.49	.45	.50	.45	.41	.38
4.0	.62	.52	.45	.59	.50	.43	.53	.46	.40	.48	.42	.38	.44	.39	.35	.32
5.0	.55	.45	.38	.52	.43	.37	.48	.40	.35	.43	.37	.32	.39	.34	.30	.27
6.0	.49	.40	.33	.47	.38	.32	.43	.35	.30	.39	.33	.28	.35	.30	.26	.23
7.0	.44	.35	.29	.42	.34	.28	.39	.31	.26	.35	.29	.24	.32	.27	.23	.20
8.0	.40	.31	.25	.38	.30	.25	.35	.28	.23	.32	.26	.22	.30	.24	.20	.18
9.0	.37	.28	.23	.35	.27	.22	.32	.25	.21	.30	.24	.19	.27	.22	.18	.16
10.0	.34	.26	.20	.32	.25	.20	.30	.23	.19	.27	.22	.18	.25	.20	.17	.15



C Range: 0 - 360DEG  
 C Interval: 30.0DEG  
 Test Speed: HIGH  
 Temperature:25.3DEG  
 Operators:LPC  
 Test Date:2021-12-08

γ Range: 0 - 180DEG  
 γ Interval: 1.0DEG  
 Test System:EVERFINE GO-2000B\_V1 SYSTEM V2.0.362  
 Humidity:65.0%  
 Test Distance:9.200m [K=1.0000]  
 Remarks:

## WEC AND CCEC

Test:U:24.00V I:0.4224A P:10.14W PF:1.000 Freq:50.00Hz Lamp Flux:224.445x1 lm		
NAME: SF21-24V-2835-72-CC-G	TYPE: 硅胶	WEIGHT:
SPEC.:	DIM.: 28mm*11.5mm	SERIAL No.:2021120805
MFR.: OLYMPIA	SUR.:1*0.016	Shielding Angle:

pcc	80%			70%			50%			30%			10%			0
pw	50%	30%	10%	50%	30%	10%	50%	30%	10%	50%	30%	10%	50%	30%	10%	0
pfc	20%			20%			20%			20%			20%			0
RCR	RCR:Room Cavity Ratio						Wall Exitance Coefficients(WEC)									
0.0																
1.0	.386	.219	.070	.372	.212	.067	.346	.198	.063	.322	.186	.060	.300	.174	.056	
2.0	.333	.182	.056	.320	.176	.054	.296	.165	.051	.275	.154	.048	.254	.144	.045	
3.0	.295	.157	.047	.284	.152	.046	.262	.142	.043	.242	.133	.041	.224	.124	.038	
4.0	.265	.138	.041	.255	.133	.039	.235	.125	.037	.217	.117	.035	.201	.109	.033	
5.0	.241	.123	.036	.232	.119	.035	.214	.111	.033	.197	.104	.031	.182	.097	.029	
6.0	.221	.111	.032	.212	.107	.031	.196	.100	.029	.181	.094	.028	.167	.088	.026	
7.0	.203	.101	.029	.196	.097	.028	.181	.091	.026	.167	.086	.025	.154	.080	.023	
8.0	.189	.092	.026	.182	.089	.025	.168	.084	.024	.155	.079	.023	.143	.073	.021	
9.0	.176	.085	.024	.169	.082	.023	.157	.077	.022	.145	.073	.021	.134	.068	.020	
10.0	.165	.079	.022	.158	.077	.021	.147	.072	.020	.136	.067	.019	.125	.063	.018	

pcc	80%			70%			50%			30%			10%			0
pw	50%	30%	10%	50%	30%	10%	50%	30%	10%	50%	30%	10%	50%	30%	10%	0
pfc	20%			20%			20%			20%			20%			0
RCR	RCR:Room Cavity Ratio						Ceiling Cavity Exitance Coefficients(CCEC)									
0.0	.358	.358	.358	.306	.306	.306	.209	.209	.209	.120	.120	.120	.038	.038	.038	
1.0	.354	.324	.297	.303	.278	.256	.207	.192	.177	.119	.111	.103	.038	.036	.033	
2.0	.348	.302	.263	.298	.260	.227	.204	.180	.159	.118	.105	.093	.038	.034	.030	
3.0	.340	.285	.242	.292	.246	.210	.200	.171	.147	.116	.100	.087	.037	.032	.028	
4.0	.332	.273	.228	.285	.236	.198	.196	.164	.139	.113	.096	.082	.037	.031	.027	
5.0	.325	.263	.218	.279	.228	.190	.192	.159	.134	.111	.093	.079	.036	.030	.026	
6.0	.317	.255	.211	.273	.221	.184	.188	.155	.130	.109	.091	.077	.035	.030	.026	
7.0	.310	.249	.206	.267	.216	.179	.184	.151	.127	.107	.089	.076	.035	.029	.025	
8.0	.304	.243	.202	.262	.211	.176	.181	.148	.125	.105	.087	.074	.034	.029	.025	
9.0	.298	.239	.199	.256	.207	.173	.178	.146	.123	.103	.086	.073	.034	.028	.024	
10.0	.292	.235	.196	.251	.204	.171	.174	.143	.122	.102	.085	.073	.033	.028	.024	

C Range: 0 - 360DEG  
 C Interval: 30.0DEG  
 Test Speed: HIGH  
 Temperature:25.3DEG  
 Operators:LPC  
 Test Date:2021-12-08

γ Range: 0 - 180DEG  
 γ Interval: 1.0DEG  
 Test System:EVERFINE GO-2000B\_V1 SYSTEM V2.0.362  
 Humidity:65.0%  
 Test Distance:9.200m [K=1.0000]  
 Remarks:

### UGR(Unified Glare Rating) Table

Test:U:24.00V I:0.4224A P:10.14W PF:1.000 Freq:50.00Hz Lamp Flux:224.445x1 lm										
NAME: SF21-24V-2835-72-CC-G					TYPE: 硅胶			WEIGHT:		
SPEC.:					DIM.: 28mm*11.5mm			SERIAL No.:2021120805		
MFR.: OLYMPIA					SUR.:1*0.016			Shielding Angle:		
ceiling/cavity	0.7	0.7	0.5	0.5	0.3	0.7	0.7	0.5	0.5	0.3
walls	0.5	0.3	0.5	0.3	0.3	0.5	0.3	0.5	0.3	0.3
working plane	0.2	0.2	0.2	0.2	0.2	0.2	0.2	0.2	0.2	0.2
Room dimensions	Viewed crosswise					Viewed endwise				
x = 2H y = 2H	21.9	23.2	22.4	23.7	24.4	19.4	20.8	20.0	21.3	22.0
3H	24.6	25.8	25.2	26.4	27.1	20.9	22.1	21.5	22.7	23.4
4H	26.1	27.3	26.7	27.9	28.6	21.4	22.6	22.0	23.2	23.9
6H	27.8	28.9	28.5	29.5	30.3	21.8	22.9	22.4	23.5	24.2
8H	28.8	29.8	29.4	30.5	31.2	21.9	22.9	22.5	23.6	24.3
12H	29.9	30.9	30.5	31.5	32.3	21.9	22.9	22.6	23.6	24.3
4H 2H	22.4	23.6	23.0	24.2	24.9	20.7	21.9	21.3	22.5	23.2
3H	25.4	26.5	26.1	27.1	27.9	22.5	23.5	23.1	24.1	24.9
4H	27.2	28.1	27.8	28.8	29.6	23.3	24.2	23.9	24.9	25.6
6H	29.1	29.9	29.8	30.6	31.4	23.9	24.7	24.6	25.4	26.2
8H	30.1	30.9	30.8	31.6	32.5	24.1	24.9	24.8	25.6	26.4
12H	31.3	32.1	32.1	32.8	33.6	24.2	24.9	24.9	25.7	26.5
8H 4H	27.5	28.3	28.2	29.0	29.8	24.5	25.3	25.2	26.0	26.8
6H	29.8	30.4	30.5	31.2	32.0	25.6	26.2	26.3	27.0	27.8
8H	31.0	31.6	31.8	32.4	33.3	26.0	26.6	26.8	27.4	28.3
12H	32.5	33.0	33.3	33.8	34.7	26.4	26.9	27.2	27.7	28.6
12H 4H	27.5	28.3	28.3	29.0	29.8	24.9	25.6	25.6	26.4	27.2
6H	29.9	30.5	30.6	31.2	32.1	26.2	26.8	27.0	27.6	28.5
8H	31.3	31.8	32.1	32.6	33.5	26.9	27.4	27.7	28.2	29.1
Variations with the observer position at spacings:										
S = 1.0H	+ 0.1 / - 0.1					+ 0.1 / - 0.1				
1.5H	+ 0.2 / - 0.3					+ 0.2 / - 0.3				
2.0H	+ 0.2 / - 0.4					+ 0.3 / - 0.4				

CIE Pub.117, 224.4 lm Total Lamp Luminous Flux Correct (8log(F/F0) = -5.2)

C Range: 0 - 360DEG  
C Interval: 30.0DEG  
Test Speed: HIGH  
Temperature:25.3DEG  
Operators:LPC  
Test Date:2021-12-08

γ Range: 0 - 180DEG  
γ Interval: 1.0DEG  
Test System:EVERFINE GO-2000B\_V1 SYSTEM V2.0.362  
Humidity:65.0%  
Test Distance:9.200m [K=1.0000]  
Remarks:

## UTILIZATION FACTORS TABLE

Test:U:24.00V I:0.4224A P:10.14W PF:1.000 Freq:50.00Hz Lamp Flux:224.445x1 lm		
NAME: SF21-24V-2835-72-CC-G	TYPE: 硅胶	WEIGHT:
SPEC.:	DIM.: 28mm*11.5mm	SERIAL No.:2021120805
MFR.: OLYMPIA	SUR.:1*0.016	Shielding Angle:

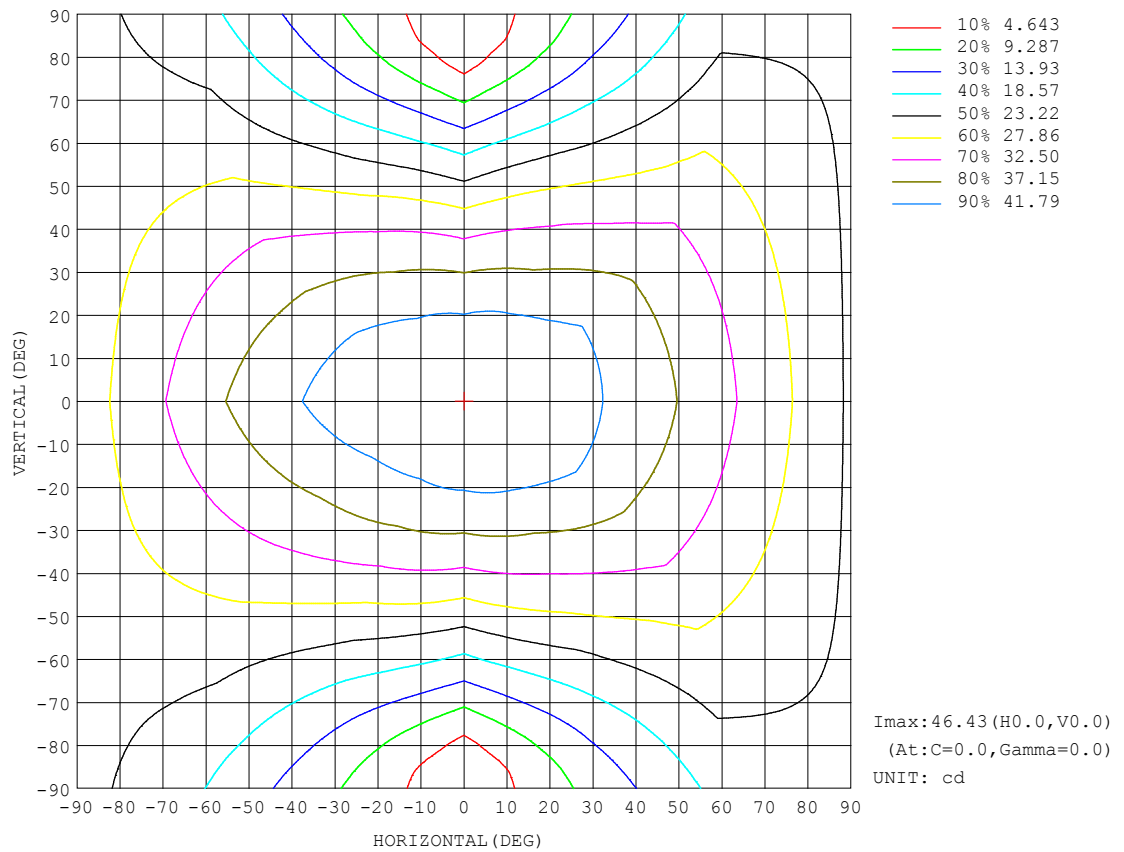
REFLECTANCE										
Ceiling	0.8	0.8	0.8	0.7	0.7	0.7	0.5	0.5	0.5	0
Walls	0.7	0.5	0.3	0.7	0.5	0.3	0.7	0.5	0.3	0
Working plane	0.2	0.2	0.2	0.2	0.2	0.2	0.2	0.2	0.2	0
ROOM INDEX	UTILIZATION FACTORS (PERCENT) $k(RI) \times RCR = 5$									
$k = 0.60$	47	34	27	45	34	27	43	33	26	19
0.80	56	43	35	54	42	34	51	40	33	25
1.00	63	50	42	61	49	41	57	49	40	31
1.25	70	57	49	68	56	48	63	53	46	36
1.50	75	63	54	72	61	53	67	58	51	40
2.00	83	71	63	79	69	61	73	65	58	46
2.50	87	77	69	83	74	67	77	69	63	49
3.00	91	81	74	87	78	72	80	73	67	53
4.00	96	88	81	91	84	78	84	78	73	57
5.00	99	92	86	94	88	82	86	81	77	60
ROOM INDEX	UF (total)									Direct
According to DIN EN 13032-2 2004			Suspended					SHRNOM = 1.25		

C Range: 0 - 360DEG  
C Interval: 30.0DEG  
Test Speed: HIGH  
Temperature:25.3DEG  
Operators:LPC  
Test Date:2021-12-08

$\gamma$  Range: 0 - 180DEG  
 $\gamma$  Interval: 1.0DEG  
Test System:EVERFINE GO-2000B\_V1 SYSTEM V2.0.362  
Humidity:65.0%  
Test Distance:9.200m [K=1.0000]  
Remarks:

## ISOCANDELA DIAGRAM

Test:U:24.00V I:0.4224A P:10.14W PF:1.000 Freq:50.00Hz Lamp Flux:224.445x1 lm		
NAME: SF21-24V-2835-72-CC-G	TYPE: 硅胶	WEIGHT:
SPEC.:	DIM.: 28mm*11.5mm	SERIAL No.:2021120805
MFR.: OLYMPIA	SUR.:1*0.016	Shielding Angle:



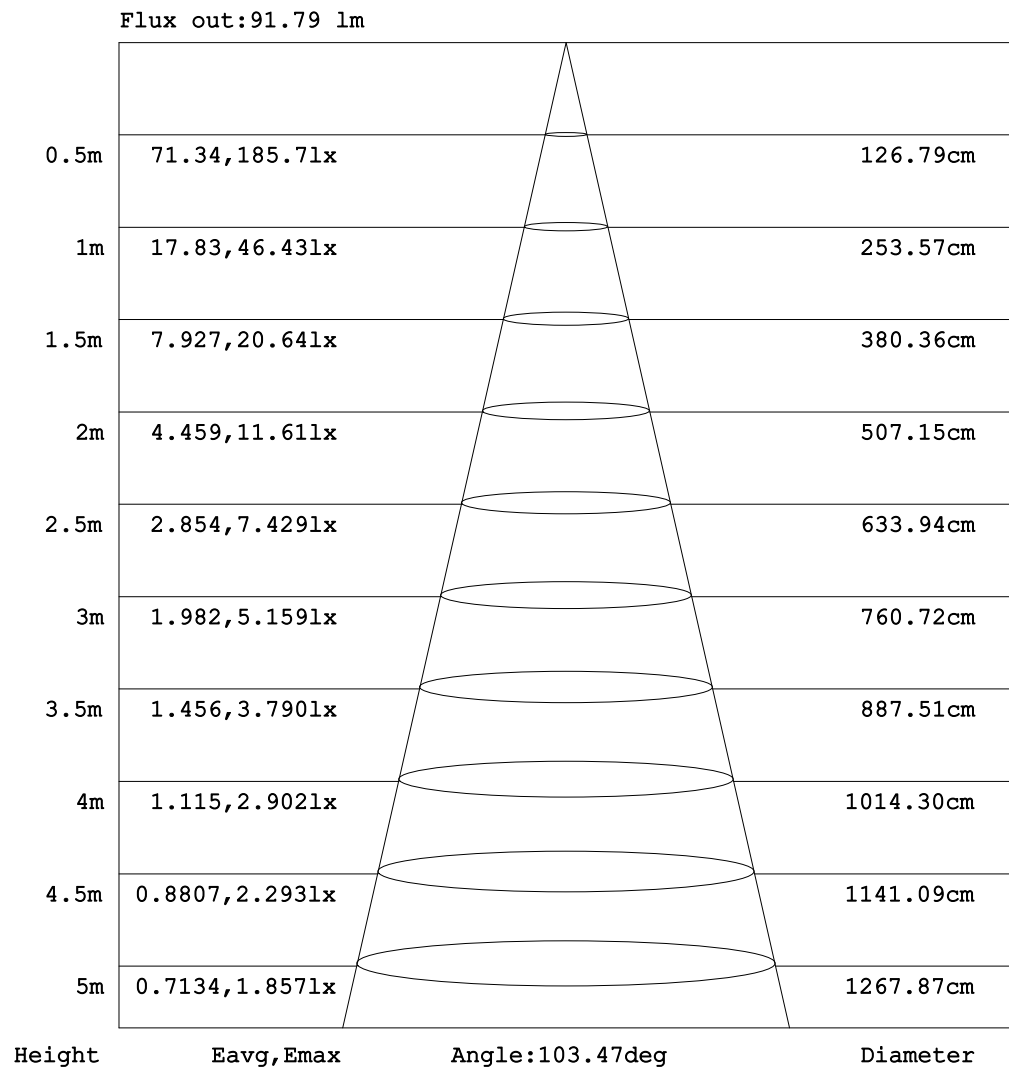
C Range: 0 - 360DEG  
C Interval: 30.0DEG  
Test Speed: HIGH  
Temperature: 25.3DEG  
Operators: LPC  
Test Date: 2021-12-08

$\gamma$  Range: 0 - 180DEG  
 $\gamma$  Interval: 1.0DEG  
Test System: EVERFINE GO-2000B\_V1 SYSTEM V2.0.362  
Humidity: 65.0%  
Test Distance: 9.200m [K=1.0000]  
Remarks:



## AAI Figure

Test:U:24.00V I:0.4224A P:10.14W PF:1.000 Freq:50.00Hz Lamp Flux:224.445x1 lm		
NAME: SF21-24V-2835-72-CC-G	TYPE: 硅胶	WEIGHT:
SPEC.:	DIM.: 28mm*11.5mm	SERIAL No.:2021120805
MFR.: OLYMPIA	SUR.:1*0.016	Shielding Angle:



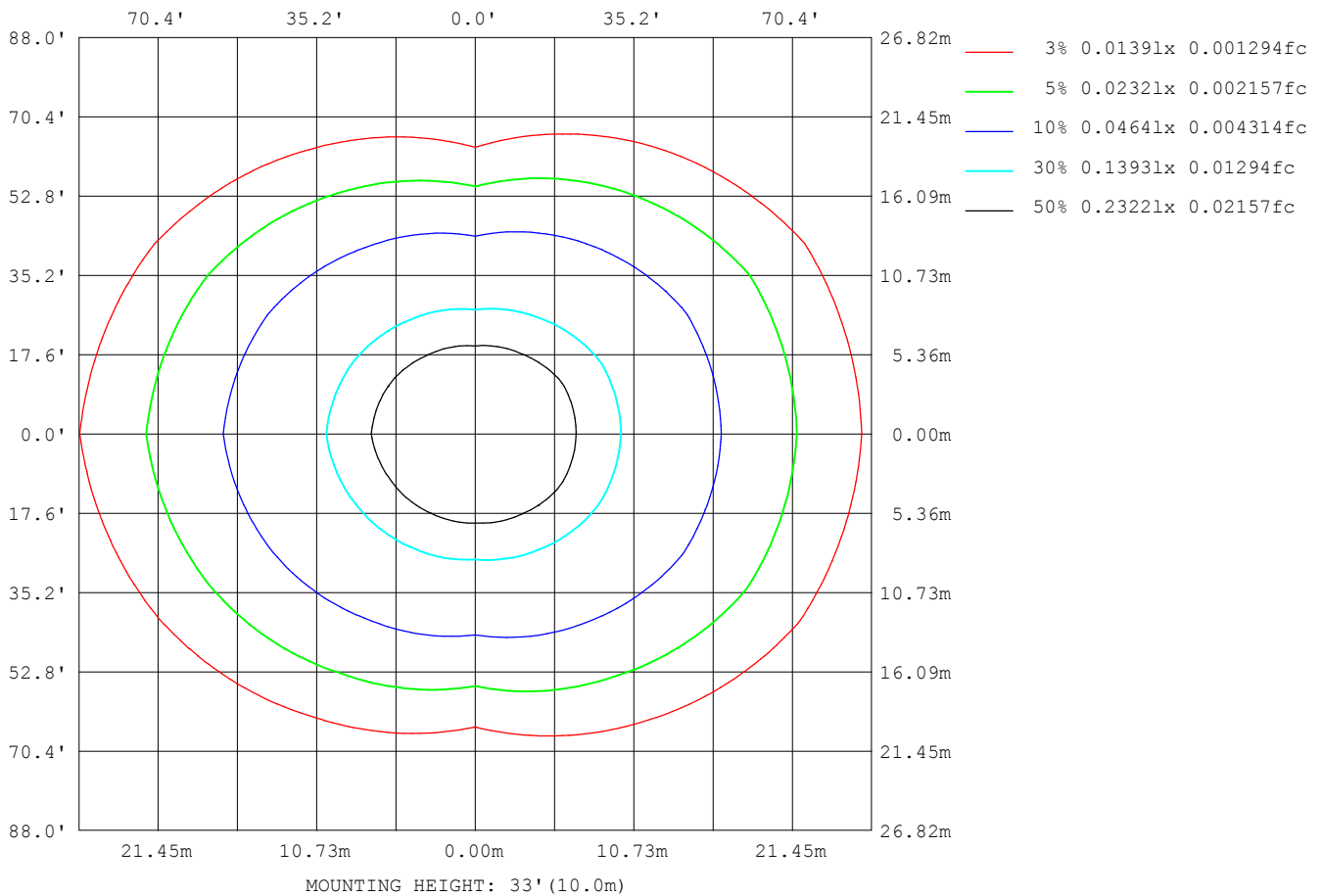
Note: The Curves indicate the illuminated area and the average illumination when the luminaire is at different distance.

C Range: 0 - 360DEG  
 C Interval: 30.0DEG  
 Test Speed: HIGH  
 Temperature: 25.3DEG  
 Operators: LPC  
 Test Date: 2021-12-08

γ Range: 0 - 180DEG  
 γ Interval: 1.0DEG  
 Test System: EVERFINE GO-2000B\_V1 SYSTEM V2.0.362  
 Humidity: 65.0%  
 Test Distance: 9.200m [K=1.0000]  
 Remarks:

## ISOLUX DIAGRAM

Test:U:24.00V I:0.4224A P:10.14W PF:1.000 Freq:50.00Hz Lamp Flux:224.445x1 lm		
NAME: SF21-24V-2835-72-CC-G	TYPE: 硅胶	WEIGHT:
SPEC.:	DIM.: 28mm*11.5mm	SERIAL No.:2021120805
MFR.: OLYMPIA	SUR.:1*0.016	Shielding Angle:



C Range: 0 - 360DEG  
C Interval: 30.0DEG  
Test Speed: HIGH  
Temperature:25.3DEG  
Operators:LPC  
Test Date:2021-12-08

$\gamma$  Range: 0 - 180DEG  
 $\gamma$  Interval: 1.0DEG  
Test System:EVERFINE GO-2000B\_V1 SYSTEM V2.0.362  
Humidity:65.0%  
Test Distance:9.200m [K=1.0000]  
Remarks:

## LED Avg.L Report

Test:U:24.00V I:0.4224A P:10.14W PF:1.000 Freq:50.00Hz Lamp Flux:224.445x1 lm		
NAME: SF21-24V-2835-72-CC-G	TYPE:硅胶	WEIGHT:
SPEC.:	DIM.: 28mm*11.5mm	SERIAL No.:2021120805
MFR.: OLYMPIA	SUR.:1*0.016	Shielding Angle:

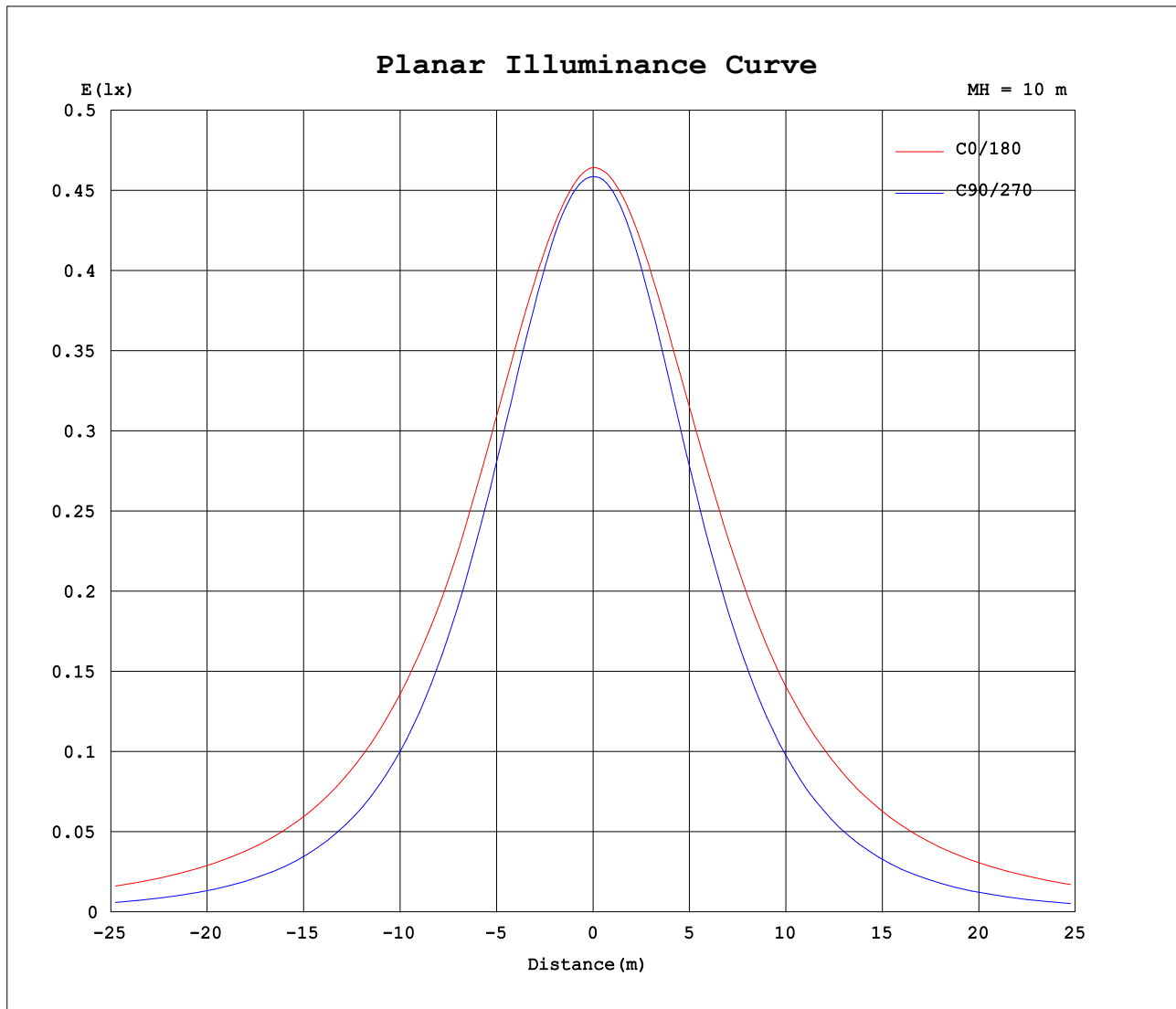
AvgL	cd/m2
L_0~180 (65) av	4879
L_0~180 (75) av	7114
L_0~180 (85) av	18433
L_90~270 (65) av	1964
L_90~270 (75) av	1415
L_90~270 (85) av	600
L_45 (65) av	3757
L_45 (75) av	5099
L_45 (85) av	12426

Standard: GB/T 29293-2012

C Range: 0 - 360DEG  
C Interval: 30.0DEG  
Test Speed: HIGH  
Temperature:25.3DEG  
Operators:LPC  
Test Date:2021-12-08

γ Range: 0 - 180DEG  
γ Interval: 1.0DEG  
Test System:EVERFINE GO-2000B\_V1 SYSTEM V2.0.362  
Humidity:65.0%  
Test Distance:9.200m [K=1.0000]  
Remarks:

## Planar Illuminance Curve



C Range: 0 - 360DEG  
C Interval: 30.0DEG  
Test Speed: HIGH  
Temperature: 25.3DEG  
Operators: LPC  
Test Date: 2021-12-08

$\gamma$  Range: 0 - 180DEG  
 $\gamma$  Interval: 1.0DEG  
Test System: EVERFINE GO-2000B\_V1 SYSTEM V2.0.362  
Humidity: 65.0%  
Test Distance: 9.200m [K=1.0000]  
Remarks:

## LUMINOUS DISTRIBUTION INTENSITY DATA

Test:U:24.00V I:0.4224A P:10.14W PF:1.000 Freq:50.00Hz Lamp Flux:224.445x1 lm		
NAME: SF21-24V-2835-72-CC-G	TYPE: 硅胶	WEIGHT:
SPEC.:	DIM.: 28mm*11.5mm	SERIAL No.:2021120805
MFR.: OLYMPIA	SUR.:1*0.016	Shielding Angle:

Table--1

UNIT: cd

C (DEG) γ (DEG)	0	30	60	90	120	150	180	210	240	270	300	330						
0	46.4	46.3	46.1	45.9	45.8	45.7	46.4	46.3	46.1	45.9	45.8	45.7						
5	46.1	46.1	46.0	45.6	45.5	45.3	46.4	46.1	45.8	45.7	45.8	45.8						
10	45.6	45.7	45.5	45.0	44.7	44.7	46.1	45.6	45.2	45.0	45.4	45.7						
15	45.0	45.0	44.4	43.7	43.5	43.8	45.7	44.9	44.0	43.7	44.3	45.1						
20	44.4	44.2	43.0	42.1	42.0	42.9	45.0	44.0	42.5	41.9	42.9	44.2						
25	43.5	43.1	41.2	40.0	40.2	41.8	44.3	42.9	40.7	39.6	41.0	43.2						
30	42.4	41.9	39.1	37.5	38.3	40.4	43.5	41.7	38.7	37.0	38.9	42.3						
35	41.0	40.5	36.9	34.7	36.1	38.7	42.4	40.2	36.6	34.2	36.8	41.0						
40	39.7	38.7	34.5	31.6	33.7	37.0	41.1	38.5	34.2	31.0	34.7	39.6						
45	38.5	36.8	32.1	28.3	31.1	35.4	39.8	36.7	31.7	27.7	32.4	37.9						
50	37.0	35.2	29.5	24.9	28.4	33.6	38.6	35.0	28.9	24.1	30.0	36.0						
55	35.3	33.4	26.8	21.3	25.5	31.7	37.3	33.2	26.1	20.4	27.3	34.4						
60	33.7	31.5	24.0	17.7	22.8	29.7	35.7	31.3	23.3	16.5	24.6	32.7						
65	32.0	29.6	21.3	13.9	20.1	27.8	34.0	29.3	20.6	12.6	21.8	30.8						
70	30.2	27.6	18.8	10.1	17.5	25.9	32.3	27.3	18.0	8.81	19.2	28.9						
75	28.4	25.8	16.3	6.45	15.1	24.1	30.5	25.5	15.4	5.27	16.7	27.0						
80	26.5	23.9	14.1	3.34	13.0	22.2	28.7	23.6	13.2	2.44	14.5	25.2						
85	24.5	22.0	12.3	1.08	11.2	20.3	26.9	21.7	11.4	0.59	12.6	23.4						
90	22.5	20.1	10.8	0.63	9.72	18.5	25.0	19.8	9.84	0.45	11.0	21.6						
95	20.6	18.3	9.56	0.67	8.58	16.8	23.0	18.1	8.64	0.45	9.75	19.8						
100	18.4	14.9	8.63	0.72	7.81	14.0	20.8	15.2	7.80	0.53	8.77	16.5						
105	16.8	14.1	7.21	0.78	5.81	13.2	19.0	14.2	6.06	0.58	7.39	15.4						
110	15.3	13.1	7.10	0.79	5.57	12.2	17.3	13.1	5.72	0.59	6.96	14.2						
115	14.0	12.1	6.47	0.81	5.18	10.7	15.4	11.9	5.20	0.60	6.25	13.1						
120	12.8	11.2	5.83	0.84	4.96	9.83	14.0	10.8	5.00	0.61	5.56	11.9						
125	11.6	10.4	4.38	0.86	4.82	9.14	12.8	9.88	4.85	0.65	5.15	10.8						
130	10.5	9.21	3.45	0.89	4.43	8.37	11.7	9.05	4.69	0.69	4.78	8.72						
135	9.38	7.41	3.27	0.92	4.28	7.49	10.6	8.23	4.45	0.73	4.22	8.12						
140	8.29	5.65	2.98	0.94	3.97	6.76	8.84	7.42	4.13	0.77	3.66	6.42						
145	7.06	4.32	2.64	0.97	3.57	6.00	8.28	6.67	3.84	0.85	3.29	5.63						
150	5.89	3.44	2.40	1.05	3.30	5.28	7.36	5.92	3.61	0.92	2.93	4.81						
155	4.93	2.94	2.60	1.07	2.91	4.58	6.51	5.21	3.21	0.94	2.95	4.06						
160	4.10	2.43	2.62	1.07	2.44	3.77	5.54	4.51	2.76	0.97	2.96	3.35						
165	3.39	2.11	2.61	1.08	2.03	3.10	4.78	3.84	2.36	0.99	2.87	2.86						
170	1.74	1.99	2.54	1.06	1.37	2.28	2.28	3.09	1.87	1.01	2.77	2.79						
175	1.36	1.76	2.31	1.06	1.12	1.16	1.90	2.16	1.20	1.02	2.54	2.63						
180	1.11	1.11	1.10	1.06	1.09	1.10	1.14	1.13	1.10	1.03	1.06	1.12						

C Range: 0 - 360DEG  
C Interval: 30.0DEG  
Test Speed: HIGH  
Temperature:25.3DEG  
Operators:LPC  
Test Date:2021-12-08

γ Range: 0 - 180DEG  
γ Interval: 1.0DEG  
Test System:EVERFINE GO-2000B\_V1 SYSTEM V2.0.362  
Humidity:65.0%  
Test Distance:9.200m [K=1.0000]  
Remarks:

## Photometric Data Table [cd]

G/C	0.0	30.0	60.0	90.0	120.0	150.0	180.0	210.0	240.0	270.0
0.0	46.43	46.27	46.06	45.87	45.83	45.71	46.43	46.27	46.06	45.87
3.0	46.28	46.23	46.07	45.77	45.65	45.51	46.43	46.25	45.95	45.86
6.0	46.03	46.09	45.92	45.55	45.35	45.23	46.36	46.07	45.70	45.65
9.0	45.71	45.81	45.62	45.16	44.91	44.83	46.21	45.78	45.33	45.22
12.0	45.37	45.46	45.12	44.54	44.30	44.37	45.96	45.38	44.74	44.55
15.0	45.04	45.03	44.44	43.73	43.53	43.84	45.66	44.92	44.00	43.71
18.0	44.69	44.53	43.62	42.73	42.65	43.26	45.27	44.38	43.11	42.71
21.0	44.25	43.97	42.67	41.68	41.66	42.69	44.85	43.79	42.13	41.46
24.0	43.73	43.37	41.58	40.39	40.60	42.00	44.41	43.12	41.05	40.12
27.0	43.11	42.69	40.40	38.98	39.47	41.22	43.96	42.44	39.91	38.65
30.0	42.41	41.94	39.12	37.50	38.26	40.36	43.45	41.67	38.70	37.03
33.0	41.59	41.09	37.77	35.83	36.98	39.39	42.87	40.80	37.45	35.37
36.0	40.66	40.12	36.41	34.08	35.64	38.35	42.19	39.85	36.12	33.52
39.0	39.91	39.11	35.01	32.28	34.21	37.34	41.41	38.80	34.73	31.70
42.0	39.25	37.99	33.57	30.35	32.69	36.35	40.60	37.72	33.25	29.71
45.0	38.47	36.80	32.11	28.34	31.13	35.39	39.82	36.70	31.70	27.67
48.0	37.62	35.88	30.59	26.33	29.48	34.37	39.12	35.71	30.06	25.45
51.0	36.69	34.89	29.02	24.20	27.79	33.24	38.38	34.70	28.38	23.29
54.0	35.68	33.79	27.39	22.02	26.11	32.09	37.54	33.63	26.67	21.06
57.0	34.68	32.70	25.72	19.87	24.47	30.93	36.65	32.47	24.97	18.75
60.0	33.68	31.52	24.00	17.67	22.84	29.74	35.69	31.29	23.33	16.52
63.0	32.67	30.28	22.32	15.40	21.22	28.55	34.68	30.10	21.71	14.22
66.0	31.64	29.17	20.81	13.18	19.61	27.40	33.66	28.90	20.08	11.86
69.0	30.57	28.01	19.28	10.87	18.02	26.28	32.62	27.72	18.47	9.575
72.0	29.49	26.87	17.78	8.607	16.52	25.15	31.59	26.60	16.91	7.440
75.0	28.38	25.75	16.31	6.448	15.09	24.05	30.54	25.46	15.43	5.273
78.0	27.26	24.62	14.96	4.443	13.79	22.93	29.47	24.33	14.08	3.393
81.0	26.11	23.48	13.75	2.891	12.61	21.85	28.38	23.22	12.84	2.078
84.0	24.93	22.36	12.65	1.459	11.56	20.74	27.25	22.12	11.75	0.7626
87.0	23.71	21.23	11.67	0.6931	10.58	19.59	26.11	20.99	10.76	0.4729
90.0	22.51	20.10	10.81	0.6333	9.723	18.52	24.97	19.85	9.842	0.4489
93.0	21.34	19.03	10.02	0.6584	8.993	17.51	23.77	18.78	9.079	0.4509
96.0	20.18	17.95	9.350	0.6785	8.405	16.54	22.60	17.74	8.446	0.4473
99.0	19.07	15.94	8.787	0.6988	7.937	14.16	21.33	15.35	7.944	0.4773
102.0	17.75	14.75	8.314	0.7713	7.495	13.71	20.05	14.78	7.542	0.5628
105.0	16.77	14.14	7.209	0.7776	5.808	13.18	18.99	14.18	6.061	0.5809
108.0	15.84	13.51	7.167	0.7829	5.609	12.62	17.96	13.56	5.969	0.5856
111.0	14.99	12.89	6.858	0.7875	5.554	11.81	17.00	12.76	5.608	0.5902
114.0	14.21	12.29	6.423	0.7992	5.233	10.88	15.83	12.14	5.281	0.5949
117.0	13.47	11.76	6.333	0.8242	5.087	10.24	14.82	11.44	5.129	0.5981
120.0	12.76	11.23	5.828	0.8393	4.960	9.834	14.03	10.82	5.005	0.6131
123.0	12.07	10.71	4.973	0.8495	4.840	9.437	13.29	10.24	4.895	0.6281
126.0	11.40	10.17	4.154	0.8695	4.790	8.995	12.58	9.691	4.824	0.6733
129.0	10.71	9.605	3.596	0.8816	4.469	8.517	11.91	9.193	4.734	0.6835
132.0	10.04	8.431	3.313	0.8947	4.423	8.050	11.25	8.756	4.608	0.7035
135.0	9.380	7.415	3.272	0.9198	4.283	7.495	10.60	8.228	4.452	0.7287
138.0	8.742	6.130	3.122	0.9398	4.122	7.075	9.118	7.686	4.266	0.7558
141.0	8.044	5.264	2.906	0.9499	3.886	6.612	7.869	7.264	4.080	0.7789
144.0	7.310	4.537	2.715	0.9700	3.634	6.145	8.556	6.806	3.899	0.8391
147.0	6.566	3.924	2.489	0.9905	3.468	5.698	7.884	6.359	3.713	0.8443
150.0	5.892	3.437	2.403	1.049	3.298	5.281	7.361	5.916	3.608	0.9196
153.0	5.299	3.115	2.422	1.061	3.052	4.853	6.828	5.505	3.366	0.9397
156.0	4.776	2.829	2.628	1.073	2.815	4.411	6.341	5.052	3.130	0.9498
159.0	4.299	2.517	2.623	1.074	2.524	3.949	5.807	4.655	2.868	0.9649
162.0	3.861	2.231	2.618	1.075	2.263	3.527	5.200	4.273	2.597	0.9900
165.0	3.389	2.112	2.612	1.076	2.026	3.100	4.781	3.836	2.361	0.9945
168.0	1.896	2.062	2.588	1.060	1.705	2.617	2.287	3.274	2.060	1.001
171.0	1.654	1.965	2.513	1.059	1.188	2.120	2.014	2.946	1.778	1.008
174.0	1.428	1.814	2.373	1.057	1.121	1.529	1.959	2.299	1.415	1.018
177.0	1.152	1.631	2.068	1.055	1.111	1.096	1.758	1.926	1.101	1.025
180.0	1.106	1.106	1.101	1.055	1.091	1.096	1.136	1.126	1.101	1.025
G/C	300.0	330.0								
0.0	45.83	45.71								
3.0	45.82	45.82								
6.0	45.71	45.80								
9.0	45.49	45.72								
12.0	44.99	45.48								
15.0	44.35	45.11								
18.0	43.52	44.52								
21.0	42.55	43.95								
24.0	41.44	43.40								
27.0	40.22	42.82								
30.0	38.95	42.25								

C Range: 0 - 360DEG  
 C Interval: 30.0DEG  
 Test Speed: HIGH  
 Temperature: 25.3DEG  
 Operators: LPC  
 Test Date: 2021-12-08

γ Range: 0 - 180DEG  
 γ Interval: 1.0DEG  
 Test System: EVERFINE GO-2000B\_V1 SYSTEM V2.0.362  
 Humidity: 65.0%  
 Test Distance: 9.200m [K=1.0000]  
 Remarks:

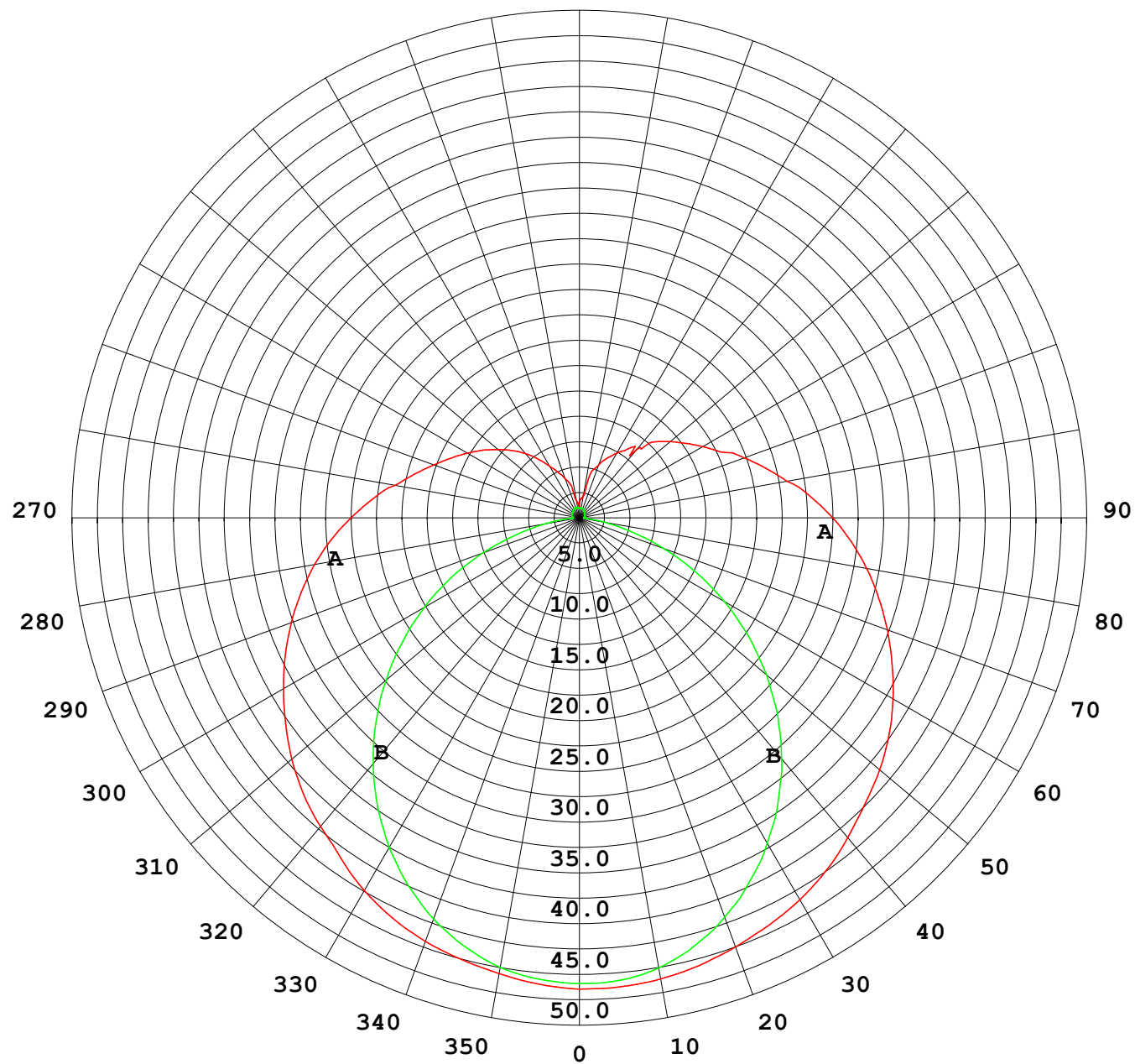
## Photometric Data Table [cd]

33.0	37.66	41.59
36.0	36.38	40.79
39.0	35.08	39.91
42.0	33.78	38.93
45.0	32.43	37.89
48.0	31.02	36.70
51.0	29.48	35.68
54.0	27.88	34.79
57.0	26.25	33.71
60.0	24.56	32.68
63.0	22.83	31.53
66.0	21.26	30.34
69.0	19.72	29.26
72.0	18.21	28.12
75.0	16.74	27.02
78.0	15.33	25.97
81.0	14.08	24.83
84.0	12.94	23.77
87.0	11.92	22.66
90.0	11.04	21.56
93.0	10.23	20.45
96.0	9.521	19.39
99.0	8.944	17.38
102.0	8.425	16.13
105.0	7.387	15.45
108.0	7.265	14.72
111.0	6.913	14.01
114.0	6.640	13.38
117.0	6.010	12.53
120.0	5.557	11.93
123.0	5.331	11.41
126.0	5.090	10.48
129.0	4.889	8.870
132.0	4.557	8.845
135.0	4.220	8.124
138.0	3.853	7.128
141.0	3.567	6.398
144.0	3.347	5.852
147.0	3.160	5.294
150.0	2.930	4.806
153.0	2.936	4.344
156.0	2.956	3.916
159.0	2.965	3.479
162.0	2.935	3.092
165.0	2.875	2.860
168.0	2.834	2.819
171.0	2.728	2.778
174.0	2.607	2.669
177.0	2.393	2.498
180.0	1.055	1.121

C Range: 0 - 360DEG  
C Interval: 30.0DEG  
Test Speed: HIGH  
Temperature:25.3DEG  
Operators:LPC  
Test Date:2021-12-08

γ Range: 0 - 180DEG  
γ Interval: 1.0DEG  
Test System:EVERFINE GO-2000B\_V1 SYSTEM V2.0.362  
Humidity:65.0%  
Test Distance:9.200m [K=1.0000]  
Remarks:

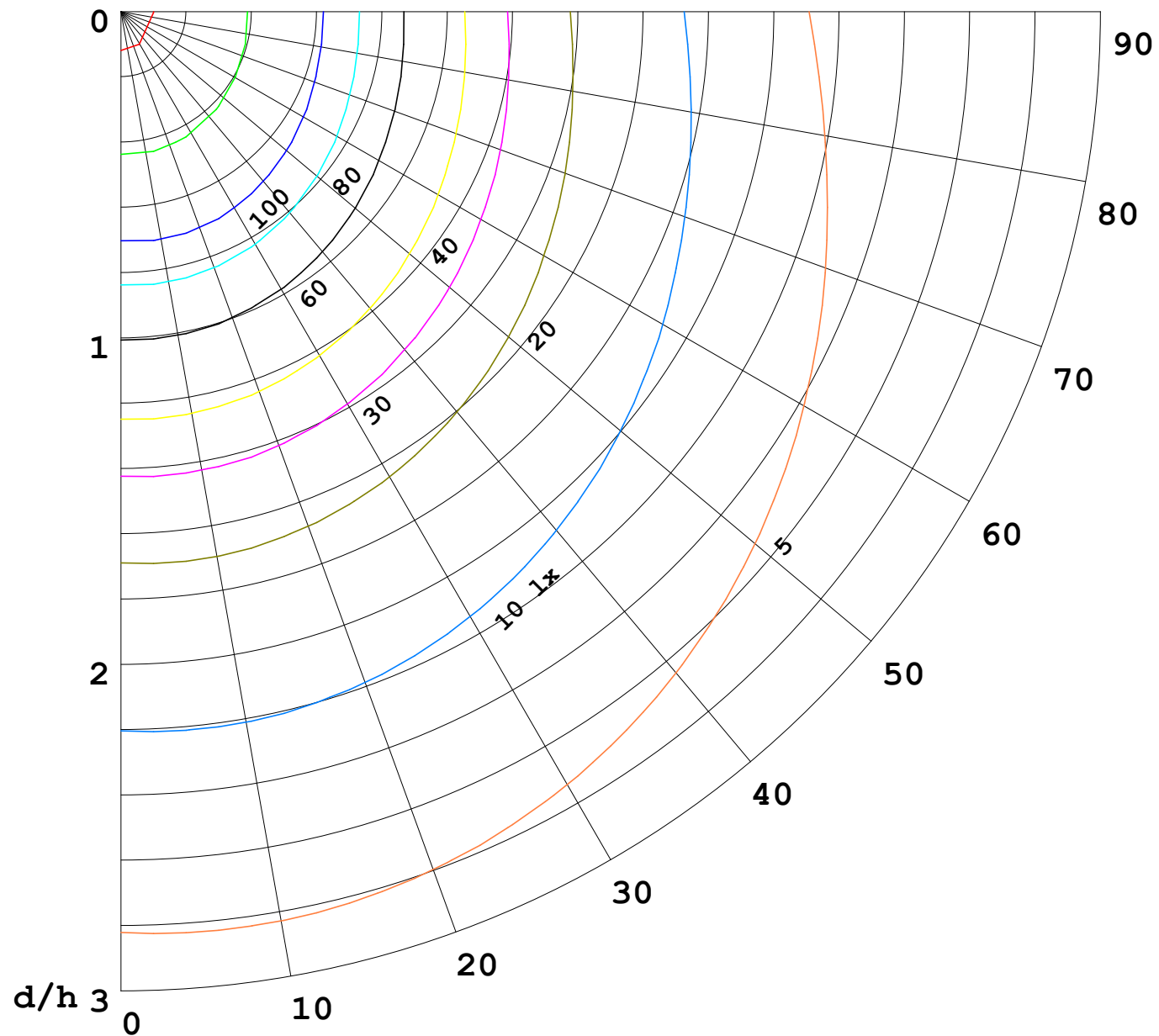
I (cd)





1000 lm

$\kappa = 1$



F = 5000 lm  
 K = 0.7  
 Hcc = 0.0 m  
 Hfc = 0.0 m  
 Eave = 100 lx

	Pcc	Pw	Pfc
—	70	50	30
—	50	30	20

