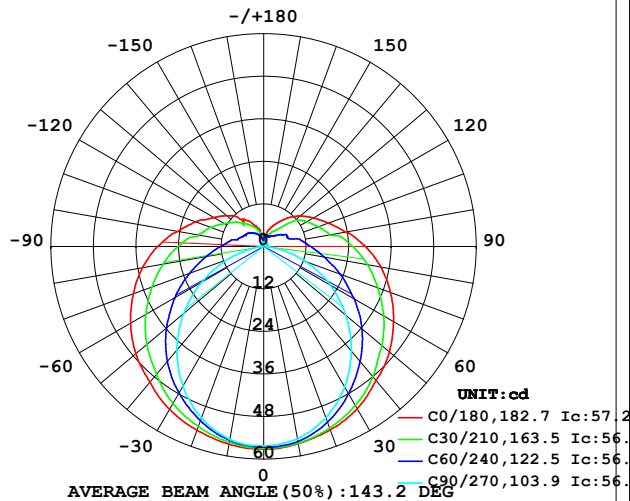


LUMINAIRE PHOTOMETRIC TEST REPORT

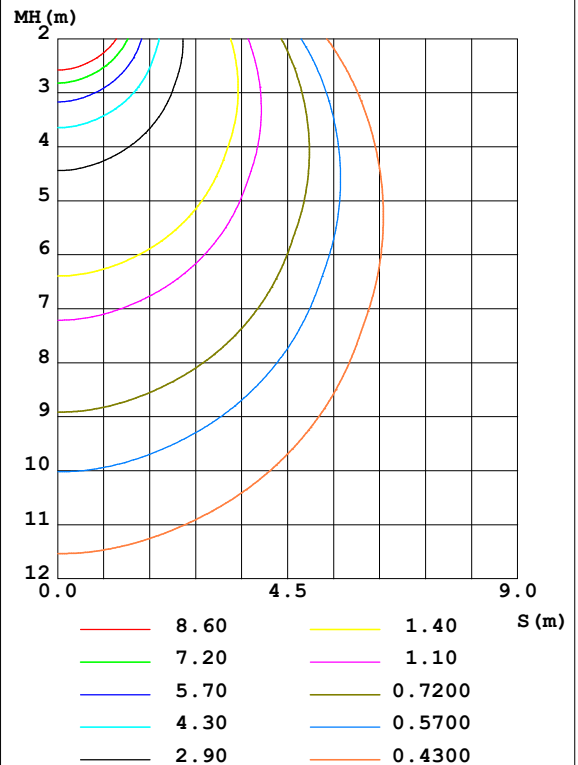
Test:U:24.00V I:0.4264A P:10.23W PF:1.000 Freq:50.00Hz Lamp Flux:275.32lx1 lm		
NAME: SF21-24V-2835-72-CC-4000-80	TYPE: 硅胶	WEIGHT:
SPEC.:	DIM.: 28mm*11.5mm	SERIAL No.:2021120801
MFR.: OLYMPIA	SUR.:1*0.016	Shielding Angle:

DATA OF LAMP		PHOTOMETRIC DATA Eff: 26.90 lm/W			
MODEL	2835	I _{max} (cd)	57.21	S/MH (C0/180)	1.40
NOMINAL POWER (W)	10	LOR (%)	100.0	S/MH (C90/270)	1.21
RATED VOLTAGE (V)	24	TOTAL FLUX (lm)	275.32	η UP, DN (C0-180)	10.5, 38.5
NOMINAL FLUX (lm)	275.321	CIE CLASS	SEMI-D.	η UP, DN (C180-360)	11.4, 39.6
LAMPS INSIDE	1	η up (%)	21.9	CIBSE SHR NOM	1.50
TEST VOLTAGE (V)	24	η down (%)	78.1	CIBSE SHR MAX	1.55

LUMINOUS INTENSITY DISTRIBUTION DIAGRAM



C0 PLANE ISOLUX DIAGRAM (UNIT: lx)



C Range: 0 - 360DEG
C Interval: 30.0DEG
Test Speed: HIGH
Temperature: 25.3DEG
Operators: LPC
Test Date: 2021-12-08

γ Range: 0 - 180DEG
γ Interval: 1.0DEG
Test System: EVERFINE GO-2000B_V1 SYSTEM V2.0.362
Humidity: 65.0%
Test Distance: 9.200m [K=1.0000]
Remarks:

ZONAL FLUX DIAGRAM

ZONAL FLUX DIAGRAM:

γ	C0	C45	C90	C135	C180	C225	C270	C315	γ	Φ zone	Φ total	%lum, lamp
10	56.45	56.11	55.09	54.36	56.63	55.83	55.25	55.76	0- 10	5.350	5.350	1.94,1.94
20	55.06	53.63	51.39	51.53	55.14	53.17	51.41	53.52	10- 20	15.40	20.75	7.54,7.54
30	52.84	49.87	45.72	47.48	53.12	49.49	45.48	50.03	20- 30	23.66	44.41	16.1,16.1
40	49.36	45.14	38.50	42.61	49.97	44.68	38.08	45.91	30- 40	29.38	73.80	26.8,26.8
50	46.30	39.86	30.24	37.17	47.09	39.40	29.54	40.93	40- 50	32.27	106.1	38.5,38.5
60	42.30	34.24	21.69	31.54	43.36	33.65	20.23	35.61	50- 60	32.32	138.4	50.3,50.3
70	38.10	28.66	12.75	25.96	39.17	27.88	10.81	30.03	60- 70	29.87	168.3	61.1,61.1
80	33.55	23.54	4.357	20.93	34.73	22.64	2.854	24.91	70- 80	25.70	194.0	70.4,70.4
90	28.69	19.22	0.8143	16.66	29.88	18.16	0.5702	20.56	80- 90	21.14	215.1	78.1,78.1
100	23.50	14.71	0.9402	12.75	24.60	14.16	0.6730	15.89	90-100	17.19	232.3	84.4,84.4
110	19.41	11.82	1.007	10.31	20.42	11.60	0.7437	13.50	100-110	13.12	245.4	89.1,89.1
120	16.19	10.42	1.065	8.402	16.38	9.628	0.7689	11.00	110-120	10.27	255.7	92.9,92.9
130	13.39	8.105	1.136	7.215	13.58	8.250	0.8594	9.416	120-130	7.812	263.5	95.7,95.7
140	10.50	5.276	1.190	5.960	9.947	6.835	0.9748	6.692	130-140	5.393	268.9	97.7,97.7
150	7.697	3.967	1.310	4.679	8.305	5.518	1.133	5.187	140-150	3.383	272.3	98.9,98.9
160	5.426	3.296	1.324	3.267	5.869	4.189	1.236	4.124	150-160	1.954	274.2	99.6,99.6
170	2.393	2.993	1.337	1.827	2.361	2.764	1.290	3.626	160-170	0.8931	275.1	99.9,99.9
180	1.407	1.380	1.347	1.359	1.417	1.380	1.337	1.364	170-180	0.2104	275.3	100,100
DEG	LUMINOUS INTENSITY:cd									UNIT:lm		

Conical surface Flux(90deg): 89.746 lm

%lum = 32.6%

%lamp = 32.6%

Conical surface Flux(120deg): 138.39 lm

%lum = 50.3%

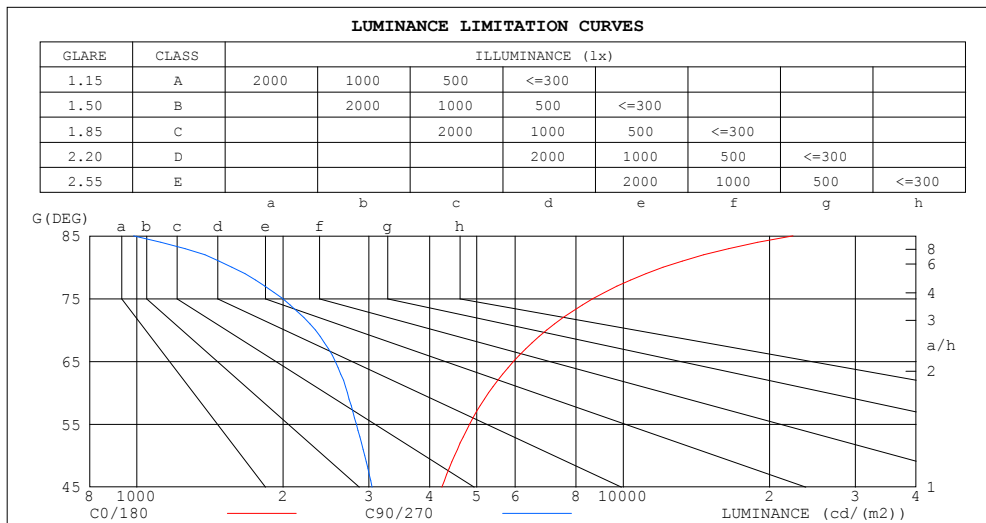
%lamp = 50.3%

C Range: 0 - 360DEG
 C Interval: 30.0DEG
 Test Speed: HIGH
 Temperature:25.3DEG
 Operators:LPC
 Test Date:2021-12-08

γ Range: 0 - 180DEG
 γ Interval: 1.0DEG
 Test System:EVERFINE GO-2000B_V1 SYSTEM V2.0.362
 Humidity:65.0%
 Test Distance:9.200m [K=1.0000]
 Remarks:

LUMINANCE LIMITATION CURVES

Test:U:24.00V I:0.4264A P:10.23W PF:1.000 Freq:50.00Hz Lamp Flux:275.32lx1 lm		
NAME: SF21-24V-2835-72-CC-4000-80	TYPE: 硅胶	WEIGHT:
SPEC.:	DIM.: 28mm*11.5mm	SERIAL No.:2021120801
MFR.: OLYMPIA	SUR.:1*0.016	Shielding Angle:



LUMINANCE cd/(m2)		
G (DEG)	C0/180	C90/270
85	22349	985
80	12076	1568
75	8664	1996
70	6963	2329
65	5951	2559
60	5288	2711
55	4833	2827
50	4502	2940
45	4241	3047

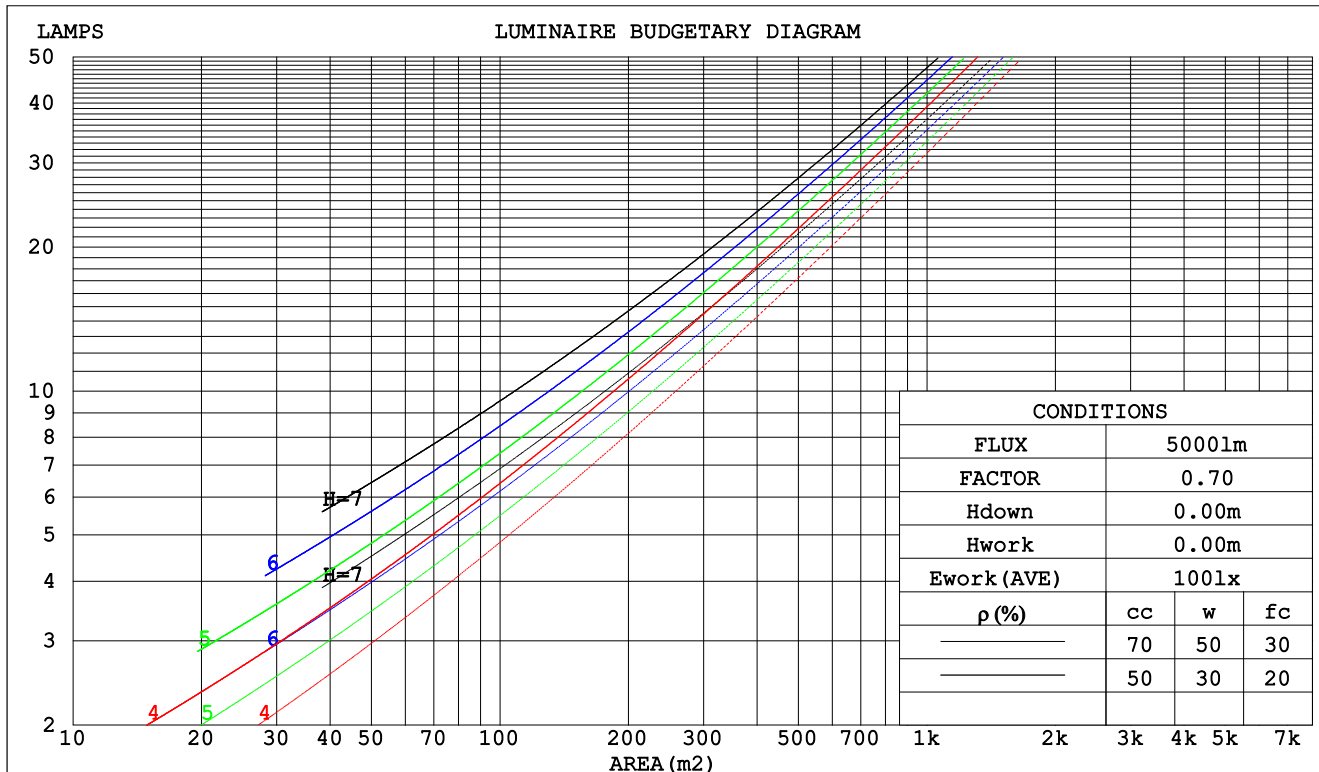
C Range: 0 - 360DEG
C Interval: 30.0DEG
Test Speed: HIGH
Temperature:25.3DEG
Operators:LPC
Test Date:2021-12-08

γ Range: 0 - 180DEG
 γ Interval: 1.0DEG
Test System:EVERFINE GO-2000B_V1 SYSTEM V2.0.362
Humidity:65.0%
Test Distance:9.200m [K=1.0000]
Remarks:

CU AND LUMINAIRE BUDGETARY ESTIMATE DIAGRAM

Test:U:24.00V I:0.4264A P:10.23W PF:1.000 Freq:50.00Hz Lamp Flux:275.321x1 lm		
NAME: SF21-24V-2835-72-CC-4000-80	TYPE: 硅胶	WEIGHT:
SPEC.:	DIM.: 28mm*11.5mm	SERIAL No.:2021120801
MFR.: OLYMPIA	SUR.:1*0.016	Shielding Angle:

pcc	80%			70%			50%			30%			10%			0
pw	50%	30%	10%	50%	30%	10%	50%	30%	10%	50%	30%	10%	50%	30%	10%	0
pfc	20%			20%			20%			20%			20%			0
RCR	RCR:Room Cavity Ratio						Coefficients of Utilization(CU)									
0.0	1.14	1.14	1.14	1.09	1.09	1.09	.99	.99	.99	.90	.90	.90	.82	.82	.82	.78
1.0	.95	.89	.84	.90	.85	.81	.82	.78	.74	.74	.71	.68	.67	.65	.62	.59
2.0	.81	.73	.66	.77	.70	.64	.70	.64	.59	.63	.59	.54	.57	.53	.50	.47
3.0	.70	.61	.54	.67	.59	.52	.61	.54	.48	.55	.49	.45	.50	.45	.41	.38
4.0	.62	.52	.45	.59	.50	.43	.53	.46	.40	.48	.42	.38	.44	.39	.35	.32
5.0	.55	.45	.38	.52	.43	.37	.48	.40	.34	.43	.37	.32	.39	.34	.30	.27
6.0	.49	.40	.33	.47	.38	.32	.43	.35	.30	.39	.33	.28	.35	.30	.26	.23
7.0	.44	.35	.29	.42	.34	.28	.39	.31	.26	.35	.29	.24	.32	.27	.23	.20
8.0	.40	.31	.25	.38	.30	.25	.35	.28	.23	.32	.26	.22	.30	.24	.20	.18
9.0	.37	.28	.23	.35	.27	.22	.32	.25	.21	.30	.24	.19	.27	.22	.18	.16
10.0	.34	.26	.20	.32	.25	.20	.30	.23	.19	.27	.22	.18	.25	.20	.17	.15



C Range: 0 - 360DEG
 C Interval: 30.0DEG
 Test Speed: HIGH
 Temperature:25.3DEG
 Operators:LPC
 Test Date:2021-12-08

γ Range: 0 - 180DEG
 γ Interval: 1.0DEG
 Test System:EVERFINE GO-2000B_V1 SYSTEM V2.0.362
 Humidity:65.0%
 Test Distance:9.200m [K=1.0000]
 Remarks:

WEC AND CCEC

Test:U:24.00V I:0.4264A P:10.23W PF:1.000 Freq:50.00Hz Lamp Flux:275.321x1 lm		
NAME: SF21-24V-2835-72-CC-4000-80	TYPE: 硅胶	WEIGHT:
SPEC.:	DIM.: 28mm*11.5mm	SERIAL No.:2021120801
MFR.: OLYMPIA	SUR.:1*0.016	Shielding Angle:

pcc	80%			70%			50%			30%			10%			0	
pw	50%	30%	10%	50%	30%	10%	50%	30%	10%	50%	30%	10%	50%	30%	10%	0	
pfc	20%			20%			20%			20%			20%			0	
RCR	RCR:Room Cavity Ratio						Wall Exitance Coefficients(WEC)										
0.0																	
1.0	.386	.220	.070	.372	.212	.067	.346	.199	.063	.323	.186	.060	.300	.174	.056		
2.0	.333	.182	.056	.320	.176	.054	.297	.165	.051	.275	.154	.048	.255	.144	.045		
3.0	.295	.157	.047	.284	.152	.046	.262	.142	.043	.243	.133	.041	.224	.124	.038		
4.0	.265	.138	.041	.255	.134	.039	.236	.125	.037	.218	.117	.035	.201	.109	.033		
5.0	.241	.123	.036	.232	.119	.035	.214	.111	.033	.198	.104	.031	.182	.097	.029		
6.0	.221	.111	.032	.212	.107	.031	.196	.101	.029	.181	.094	.028	.167	.088	.026		
7.0	.204	.101	.029	.196	.098	.028	.181	.092	.026	.167	.086	.025	.154	.080	.024		
8.0	.189	.092	.026	.182	.089	.025	.168	.084	.024	.155	.079	.023	.143	.074	.021		
9.0	.176	.085	.024	.169	.083	.023	.157	.078	.022	.145	.073	.021	.134	.068	.020		
10.0	.165	.079	.022	.159	.077	.021	.147	.072	.020	.136	.067	.019	.125	.063	.018		

pcc	80%			70%			50%			30%			10%			0	
pw	50%	30%	10%	50%	30%	10%	50%	30%	10%	50%	30%	10%	50%	30%	10%	0	
pfc	20%			20%			20%			20%			20%			0	
RCR	RCR:Room Cavity Ratio						Ceiling Cavity Exitance Coefficients(CCEC)										
0.0	.357	.357	.357	.305	.305	.305	.208	.208	.208	.120	.120	.120	.038	.038	.038		
1.0	.354	.324	.296	.303	.278	.255	.207	.191	.176	.119	.111	.103	.038	.036	.033		
2.0	.347	.301	.262	.297	.259	.227	.204	.179	.158	.117	.104	.093	.038	.034	.030		
3.0	.339	.285	.241	.291	.245	.209	.200	.171	.146	.115	.100	.086	.037	.032	.028		
4.0	.332	.272	.227	.285	.235	.197	.196	.164	.139	.113	.096	.082	.036	.031	.027		
5.0	.324	.262	.217	.278	.227	.189	.192	.159	.133	.111	.093	.079	.036	.030	.026		
6.0	.317	.255	.210	.272	.220	.183	.188	.154	.129	.109	.091	.077	.035	.030	.025		
7.0	.310	.248	.205	.266	.215	.179	.184	.151	.127	.107	.089	.075	.035	.029	.025		
8.0	.303	.243	.201	.261	.210	.175	.180	.148	.124	.105	.087	.074	.034	.029	.025		
9.0	.297	.238	.198	.256	.206	.173	.177	.145	.123	.103	.086	.073	.033	.028	.024		
10.0	.291	.234	.196	.251	.203	.171	.174	.143	.121	.101	.084	.072	.033	.028	.024		

C Range: 0 - 360DEG
 C Interval: 30.0DEG
 Test Speed: HIGH
 Temperature:25.3DEG
 Operators:LPC
 Test Date:2021-12-08

γ Range: 0 - 180DEG
 γ Interval: 1.0DEG
 Test System:EVERFINE GO-2000B_V1 SYSTEM V2.0.362
 Humidity:65.0%
 Test Distance:9.200m [K=1.0000]
 Remarks:

UGR(Unified Glare Rating) Table

Test:U:24.00V I:0.4264A P:10.23W PF:1.000 Freq:50.00Hz Lamp Flux:275.321x1 lm										
NAME: SF21-24V-2835-72-CC-4000-80					TYPE: 硅胶			WEIGHT:		
SPEC.:					DIM.: 28mm*11.5mm			SERIAL No.:2021120801		
MFR.: OLYMPIA					SUR.:1*0.016			Shielding Angle:		
ceiling/cavity	0.7	0.7	0.5	0.5	0.3	0.7	0.7	0.5	0.5	0.3
walls	0.5	0.3	0.5	0.3	0.3	0.5	0.3	0.5	0.3	0.3
working plane	0.2	0.2	0.2	0.2	0.2	0.2	0.2	0.2	0.2	0.2
Room dimensions	Viewed crosswise					Viewed endwise				
x = 2H y = 2H	22.0	23.3	22.5	23.9	24.5	19.4	20.8	20.0	21.3	22.0
3H	24.7	26.0	25.3	26.6	27.2	20.9	22.1	21.5	22.7	23.4
4H	26.3	27.4	26.9	28.1	28.8	21.5	22.6	22.1	23.3	24.0
6H	28.0	29.1	28.6	29.7	30.4	21.9	22.9	22.5	23.6	24.3
8H	29.0	30.0	29.6	30.6	31.4	22.0	23.0	22.6	23.6	24.4
12H	30.0	31.1	30.7	31.7	32.5	22.0	23.0	22.6	23.7	24.4
4H 2H	22.5	23.7	23.1	24.3	25.0	20.7	21.9	21.3	22.5	23.2
3H	25.6	26.6	26.2	27.2	28.0	22.5	23.5	23.1	24.2	24.9
4H	27.3	28.2	28.0	28.9	29.7	23.3	24.2	24.0	24.9	25.7
6H	29.2	30.1	29.9	30.8	31.6	23.9	24.8	24.6	25.5	26.3
8H	30.3	31.1	31.0	31.8	32.6	24.1	24.9	24.8	25.6	26.5
12H	31.5	32.3	32.3	33.0	33.8	24.3	25.0	25.0	25.7	26.6
8H 4H	27.6	28.4	28.3	29.1	30.0	24.5	25.3	25.2	26.0	26.9
6H	29.9	30.6	30.6	31.3	32.2	25.6	26.3	26.3	27.0	27.9
8H	31.2	31.8	32.0	32.5	33.4	26.1	26.7	26.8	27.4	28.3
12H	32.7	33.2	33.5	34.0	34.9	26.5	27.0	27.2	27.8	28.7
12H 4H	27.7	28.4	28.4	29.1	30.0	25.0	25.7	25.7	26.4	27.3
6H	30.0	30.6	30.8	31.4	32.3	26.3	26.9	27.0	27.6	28.5
8H	31.4	32.0	32.2	32.7	33.6	27.0	27.5	27.7	28.3	29.2
Variations with the observer position at spacings:										
S = 1.0H	+ 0.1 / - 0.1					+ 0.1 / - 0.1				
1.5H	+ 0.2 / - 0.3					+ 0.2 / - 0.3				
2.0H	+ 0.2 / - 0.3					+ 0.2 / - 0.4				

CIE Pub.117, 275.3 lm Total Lamp Luminous Flux Correct (8log(F/F0) = -4.5)

C Range: 0 - 360DEG
 C Interval: 30.0DEG
 Test Speed: HIGH
 Temperature:25.3DEG
 Operators:LPC
 Test Date:2021-12-08

γ Range: 0 - 180DEG
 γ Interval: 1.0DEG
 Test System:EVERFINE GO-2000B_V1 SYSTEM V2.0.362
 Humidity:65.0%
 Test Distance:9.200m [K=1.0000]
 Remarks:

UTILIZATION FACTORS TABLE

Test:U:24.00V I:0.4264A P:10.23W PF:1.000 Freq:50.00Hz Lamp Flux:275.321x1 lm		
NAME: SF21-24V-2835-72-CC-4000-80	TYPE: 硅胶	WEIGHT:
SPEC.:	DIM.: 28mm*11.5mm	SERIAL No.:2021120801
MFR.: OLYMPIA	SUR.:1*0.016	Shielding Angle:

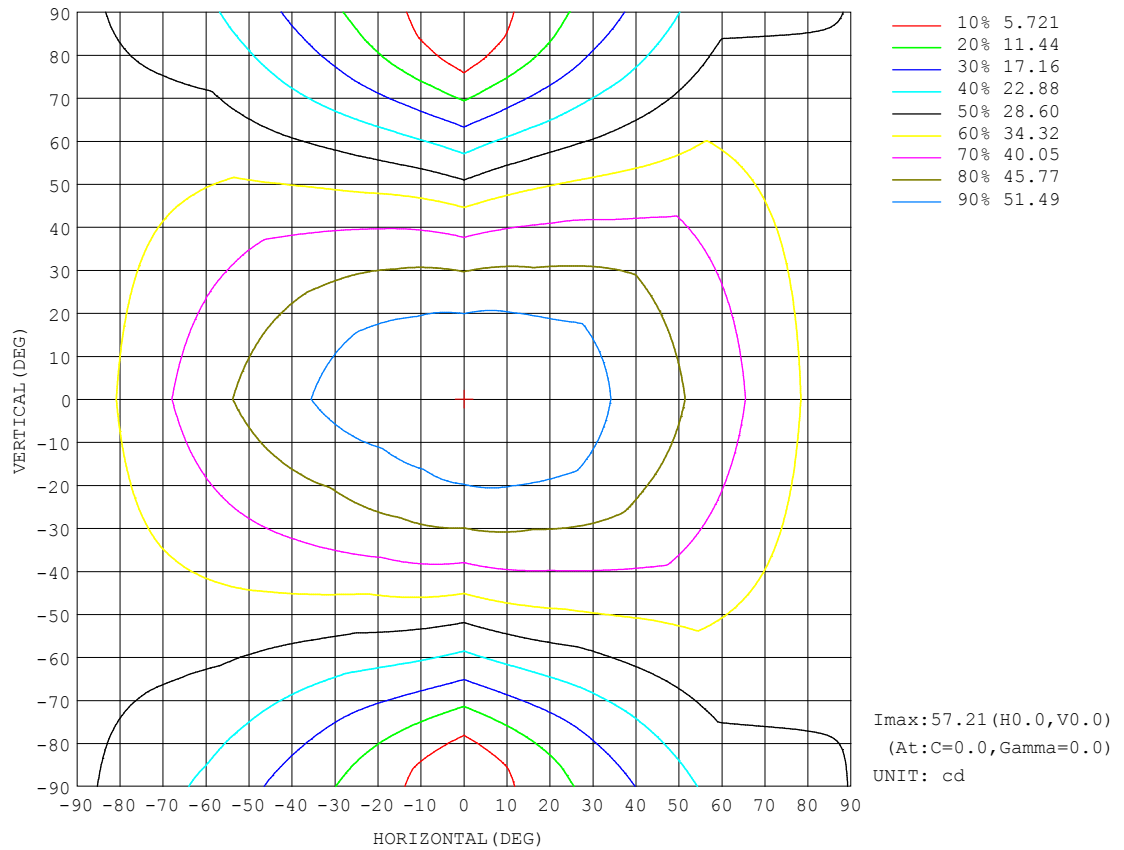
REFLECTANCE										
Ceiling	0.8	0.8	0.8	0.7	0.7	0.7	0.5	0.5	0.5	0
Walls	0.7	0.5	0.3	0.7	0.5	0.3	0.7	0.5	0.3	0
Working plane	0.2	0.2	0.2	0.2	0.2	0.2	0.2	0.2	0.2	0
ROOM INDEX	UTILIZATION FACTORS (PERCENT) $k(RI) \times RCR = 5$									
$k = 0.60$	47	34	27	45	34	27	43	33	26	19
0.80	56	43	35	54	42	34	51	40	33	25
1.00	63	50	42	61	49	41	57	49	40	31
1.25	70	57	49	68	56	48	63	53	46	36
1.50	75	63	54	72	61	53	67	58	51	40
2.00	83	71	63	79	69	61	73	65	58	46
2.50	87	77	69	83	74	67	77	69	63	49
3.00	91	81	74	87	78	72	80	73	67	53
4.00	96	88	81	91	84	78	84	78	73	57
5.00	99	92	86	94	88	82	86	81	77	60
ROOM INDEX	UF (total)									Direct
According to DIN EN 13032-2 2004			Suspended					SHRNOM = 1.25		

C Range: 0 - 360DEG
C Interval: 30.0DEG
Test Speed: HIGH
Temperature:25.3DEG
Operators:LPC
Test Date:2021-12-08

γ Range: 0 - 180DEG
 γ Interval: 1.0DEG
Test System:EVERFINE GO-2000B_V1 SYSTEM V2.0.362
Humidity:65.0%
Test Distance:9.200m [K=1.0000]
Remarks:

ISOCANDELA DIAGRAM

Test:U:24.00V I:0.4264A P:10.23W PF:1.000 Freq:50.00Hz Lamp Flux:275.321x1 lm		
NAME: SF21-24V-2835-72-CC-4000-80	TYPE: 硅胶	WEIGHT:
SPEC.:	DIM.: 28mm*11.5mm	SERIAL No.:2021120801
MFR.: OLYMPIA	SUR.:1*0.016	Shielding Angle:

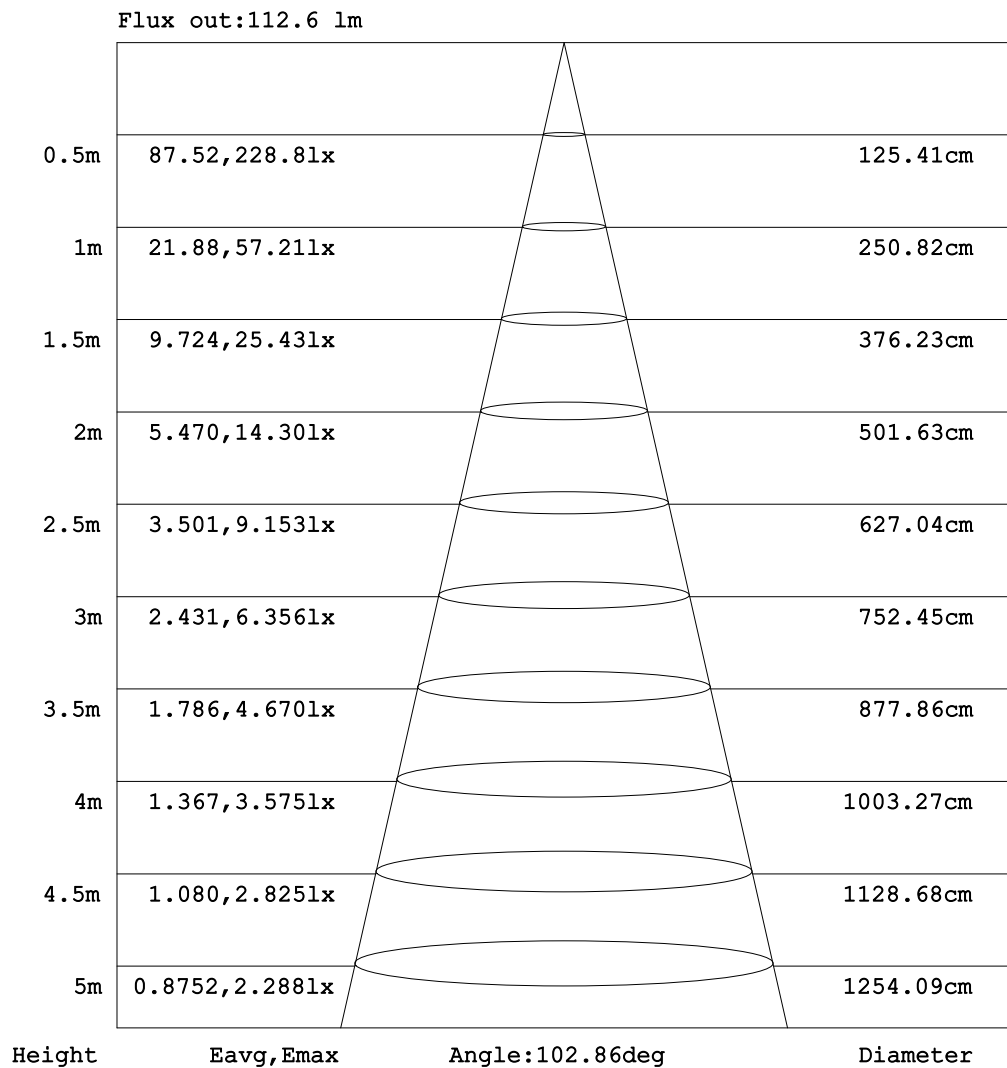


C Range: 0 - 360DEG
C Interval: 30.0DEG
Test Speed: HIGH
Temperature: 25.3DEG
Operators: LPC
Test Date: 2021-12-08

γ Range: 0 - 180DEG
 γ Interval: 1.0DEG
Test System: EVERFINE GO-2000B_V1 SYSTEM V2.0.362
Humidity: 65.0%
Test Distance: 9.200m [K=1.0000]
Remarks:

AAI Figure

Test:U:24.00V I:0.4264A P:10.23W PF:1.000 Freq:50.00Hz Lamp Flux:275.32lx1 lm		
NAME: SF21-24V-2835-72-CC-4000-80	TYPE: 硅胶	WEIGHT:
SPEC.:	DIM.: 28mm*11.5mm	SERIAL No.:2021120801
MFR.: OLYMPIA	SUR.:1*0.016	Shielding Angle:



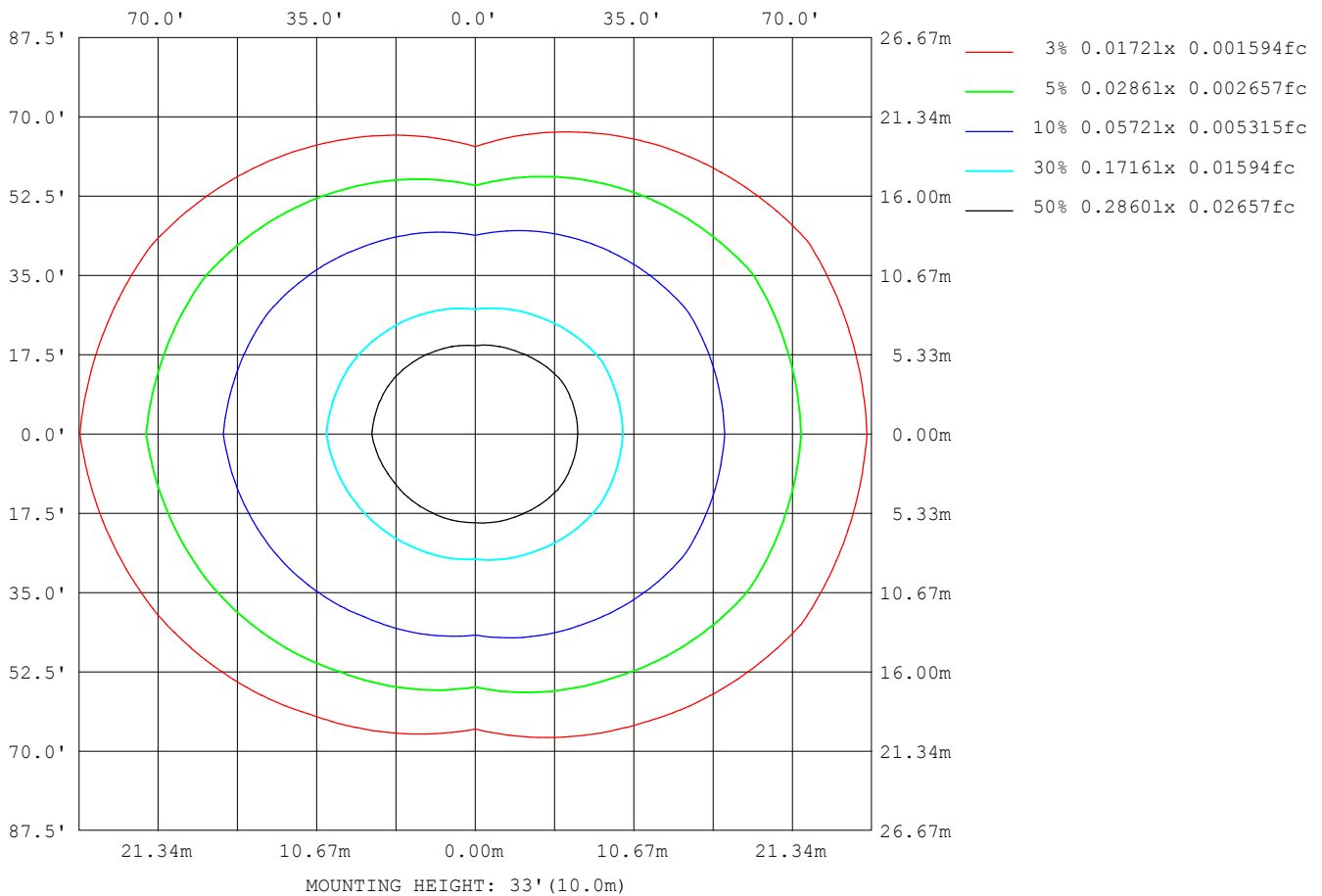
Note: The Curves indicate the illuminated area and the average illumination when the luminaire is at different distance.

C Range: 0 - 360DEG
 C Interval: 30.0DEG
 Test Speed: HIGH
 Temperature: 25.3DEG
 Operators: LPC
 Test Date: 2021-12-08

γ Range: 0 - 180DEG
 γ Interval: 1.0DEG
 Test System: EVERFINE GO-2000B_V1 SYSTEM V2.0.362
 Humidity: 65.0%
 Test Distance: 9.200m [K=1.0000]
 Remarks:

ISOLUX DIAGRAM

Test:U:24.00V I:0.4264A P:10.23W PF:1.000 Freq:50.00Hz Lamp Flux:275.32lx1 lm		
NAME: SF21-24V-2835-72-CC-4000-80	TYPE: 硅胶	WEIGHT:
SPEC.:	DIM.: 28mm*11.5mm	SERIAL No.:2021120801
MFR.: OLYMPIA	SUR.:1*0.016	Shielding Angle:



C Range: 0 - 360DEG
C Interval: 30.0DEG
Test Speed: HIGH
Temperature:25.3DEG
Operators:LPC
Test Date:2021-12-08

γ Range: 0 - 180DEG
 γ Interval: 1.0DEG
Test System:EVERFINE GO-2000B_V1 SYSTEM V2.0.362
Humidity:65.0%
Test Distance:9.200m [K=1.0000]
Remarks:

LED Avg.L Report

Test:U:24.00V I:0.4264A P:10.23W PF:1.000 Freq:50.00Hz Lamp Flux:275.321x1 lm		
NAME: SF21-24V-2835-72-CC-4000-80	TYPE:硅胶	WEIGHT:
SPEC.:	DIM.: 28mm*11.5mm	SERIAL No.:2021120801
MFR.: OLYMPIA	SUR.:1*0.016	Shielding Angle:

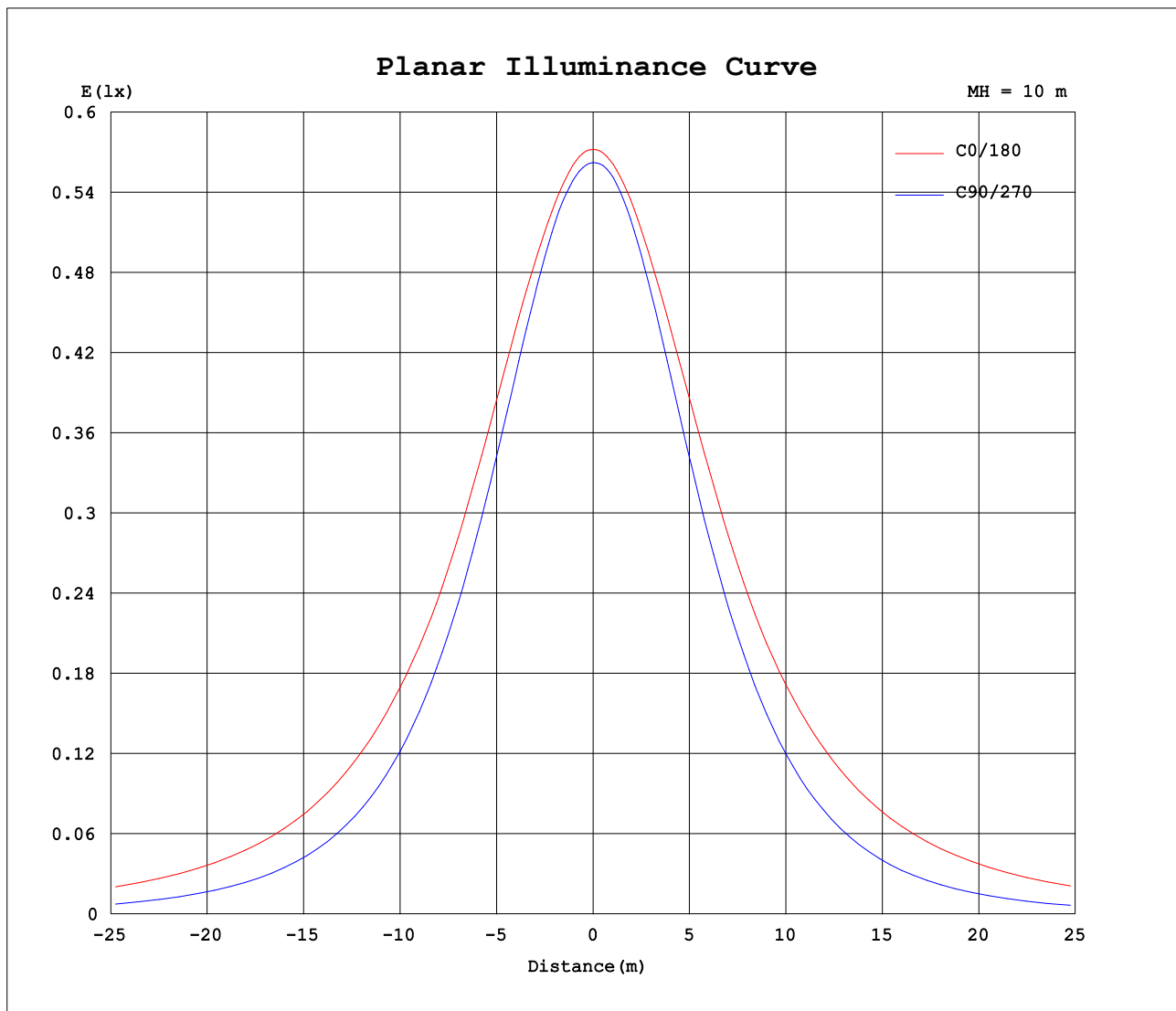
AvgL	cd/m2
L_0~180 (65) av	6028
L_0~180 (75) av	8800
L_0~180 (85) av	22775
L_90~270 (65) av	2426
L_90~270 (75) av	1771
L_90~270 (85) av	763
L_45 (65) av	4611
L_45 (75) av	6259
L_45 (85) av	15255

Standard: GB/T 29293-2012

C Range: 0 - 360DEG
C Interval: 30.0DEG
Test Speed: HIGH
Temperature:25.3DEG
Operators:LPC
Test Date:2021-12-08

γ Range: 0 - 180DEG
γ Interval: 1.0DEG
Test System:EVERFINE GO-2000B_V1 SYSTEM V2.0.362
Humidity:65.0%
Test Distance:9.200m [K=1.0000]
Remarks:

Planar Illuminance Curve



C Range: 0 - 360DEG
C Interval: 30.0DEG
Test Speed: HIGH
Temperature: 25.3DEG
Operators: LPC
Test Date: 2021-12-08

γ Range: 0 - 180DEG
 γ Interval: 1.0DEG
Test System: EVERFINE GO-2000B_V1 SYSTEM V2.0.362
Humidity: 65.0%
Test Distance: 9.200m [K=1.0000]
Remarks:

LUMINOUS DISTRIBUTION INTENSITY DATA

Test:U:24.00V I:0.4264A P:10.23W PF:1.000 Freq:50.00Hz Lamp Flux:275.321x1 lm		
NAME: SF21-24V-2835-72-CC-4000-80	TYPE: 硅胶	WEIGHT:
SPEC.:	DIM.: 28mm*11.5mm	SERIAL No.:2021120801
MFR.: OLYMPIA	SUR.:1*0.016	Shielding Angle:

Table--1

UNIT: cd

C (DEG) γ (DEG)	0	30	60	90	120	150	180	210	240	270	300	330						
0	57.2	57.0	56.6	56.2	56.0	55.7	57.2	57.0	56.6	56.2	56.0	55.7						
5	57.0	56.8	56.5	55.9	55.4	55.1	57.1	56.7	56.3	56.1	56.0	56.0						
10	56.5	56.3	55.9	55.1	54.4	54.3	56.6	56.1	55.6	55.2	55.5	56.0						
15	55.8	55.5	54.5	53.5	52.9	53.3	55.9	55.2	54.1	53.6	54.4	55.4						
20	55.1	54.5	52.8	51.4	51.0	52.1	55.1	54.1	52.3	51.4	52.7	54.3						
25	54.1	53.2	50.5	48.8	48.8	50.5	54.2	52.8	50.2	48.7	50.5	53.2						
30	52.8	51.8	48.0	45.7	46.3	48.7	53.1	51.2	47.8	45.5	48.0	52.1						
35	51.2	50.0	45.2	42.3	43.6	46.5	51.7	49.3	45.2	42.0	45.4	50.7						
40	49.4	47.9	42.4	38.5	40.6	44.6	50.0	47.1	42.3	38.1	42.8	49.0						
45	48.0	45.5	39.4	34.5	37.3	42.7	48.6	45.0	39.2	33.9	40.1	47.1						
50	46.3	43.5	36.2	30.2	33.9	40.4	47.1	43.0	35.8	29.5	37.1	44.7						
55	44.4	41.4	32.9	25.9	30.7	38.1	45.3	40.8	32.3	24.9	33.9	42.7						
60	42.3	39.1	29.4	21.7	27.4	35.7	43.4	38.4	28.9	20.2	30.6	40.6						
65	40.2	36.6	26.1	17.3	24.1	33.3	41.3	36.0	25.6	15.5	27.1	38.4						
70	38.1	34.3	23.0	12.7	20.9	31.0	39.2	33.5	22.2	10.8	24.0	36.1						
75	35.9	32.0	20.0	8.27	18.0	28.6	37.0	31.2	19.1	6.41	20.9	33.9						
80	33.6	29.7	17.3	4.36	15.5	26.4	34.7	28.9	16.4	2.85	18.1	31.7						
85	31.2	27.4	15.1	1.37	13.3	24.0	32.4	26.5	14.1	0.76	15.8	29.5						
90	28.7	25.1	13.3	0.81	11.5	21.8	29.9	24.1	12.2	0.57	13.9	27.2						
95	26.3	22.9	11.8	0.86	10.1	19.8	27.4	21.9	10.7	0.57	12.3	25.0						
100	23.5	18.8	10.7	0.94	9.20	16.3	24.6	18.7	9.61	0.67	10.7	21.1						
105	21.3	17.7	8.34	1.01	6.71	15.4	22.4	17.2	7.63	0.73	9.14	18.9						
110	19.4	16.4	7.27	1.01	6.37	14.2	20.4	16.0	7.21	0.74	9.04	18.0						
115	17.7	15.2	7.29	1.02	5.82	12.3	18.0	14.3	6.63	0.76	8.03	16.3						
120	16.2	14.0	6.81	1.07	5.53	11.3	16.4	12.9	6.33	0.77	7.35	14.7						
125	14.8	12.9	5.91	1.10	5.41	10.4	14.9	11.7	6.09	0.83	6.80	13.8						
130	13.4	11.2	5.01	1.14	5.00	9.43	13.6	10.7	5.83	0.86	6.31	12.5						
135	12.0	8.63	4.35	1.16	4.72	8.41	12.2	9.66	5.43	0.92	5.59	10.5						
140	10.5	6.63	3.93	1.19	4.34	7.58	9.95	8.68	4.99	0.97	4.87	8.51						
145	9.01	5.48	3.58	1.22	3.91	6.67	9.22	7.70	4.57	1.02	4.45	7.46						
150	7.70	4.72	3.21	1.31	3.54	5.81	8.30	6.77	4.27	1.13	3.91	6.46						
155	6.53	3.97	3.26	1.32	3.02	4.98	6.82	5.91	3.80	1.19	3.83	5.47						
160	5.43	3.31	3.28	1.32	2.44	4.09	5.87	5.07	3.31	1.24	3.78	4.47						
165	4.55	2.82	3.26	1.33	1.81	3.22	5.17	4.09	2.75	1.26	3.66	3.80						
170	2.39	2.80	3.18	1.34	1.42	2.23	2.36	3.34	2.19	1.29	3.53	3.72						
175	1.90	2.46	2.88	1.34	1.40	1.37	1.96	2.40	1.37	1.30	3.25	3.40						
180	1.41	1.39	1.37	1.35	1.36	1.36	1.42	1.39	1.37	1.34	1.35	1.38						

C Range: 0 - 360DEG
C Interval: 30.0DEG
Test Speed: HIGH
Temperature:25.3DEG
Operators:LPC
Test Date:2021-12-08

γ Range: 0 - 180DEG
γ Interval: 1.0DEG
Test System:EVERFINE GO-2000B_V1 SYSTEM V2.0.362
Humidity:65.0%
Test Distance:9.200m [K=1.0000]
Remarks:

Photometric Data Table [cd]

G/C	0.0	30.0	60.0	90.0	120.0	150.0	180.0	210.0	240.0	270.0
0.0	57.21	56.95	56.61	56.23	55.95	55.73	57.21	56.95	56.61	56.23
3.0	57.17	56.92	56.62	56.09	55.68	55.42	57.17	56.88	56.50	56.24
6.0	56.93	56.76	56.39	55.78	55.24	55.00	57.02	56.62	56.22	56.01
9.0	56.58	56.47	56.02	55.29	54.66	54.48	56.73	56.24	55.77	55.47
12.0	56.18	56.06	55.42	54.48	53.87	53.90	56.39	55.76	55.05	54.66
15.0	55.77	55.53	54.55	53.50	52.89	53.27	55.94	55.19	54.14	53.64
18.0	55.37	54.93	53.52	52.26	51.78	52.59	55.47	54.55	53.07	52.44
21.0	54.88	54.28	52.35	50.89	50.55	51.80	54.96	53.81	51.89	50.90
24.0	54.31	53.49	51.00	49.34	49.23	50.86	54.43	53.03	50.61	49.30
27.0	53.63	52.67	49.54	47.56	47.83	49.81	53.82	52.17	49.23	47.50
30.0	52.84	51.78	47.96	45.72	46.31	48.65	53.12	51.19	47.79	45.48
33.0	51.89	50.74	46.32	43.68	44.69	47.36	52.30	50.08	46.26	43.46
36.0	50.80	49.62	44.64	41.52	42.99	46.08	51.34	48.84	44.64	41.19
39.0	49.65	48.38	42.92	39.27	41.20	45.00	50.30	47.49	42.90	38.92
42.0	48.84	47.01	41.18	36.93	39.30	43.88	49.37	46.17	41.09	36.50
45.0	47.98	45.51	39.38	34.47	37.33	42.65	48.59	45.04	39.17	33.95
48.0	47.00	44.27	37.51	31.97	35.28	41.37	47.74	43.87	37.17	31.26
51.0	45.93	43.09	35.58	29.40	33.23	40.00	46.76	42.60	35.07	28.57
54.0	44.78	41.82	33.57	26.81	31.30	38.58	45.69	41.26	32.94	25.87
57.0	43.52	40.47	31.52	24.26	29.36	37.17	44.56	39.85	30.93	22.95
60.0	42.30	39.08	29.40	21.69	27.37	35.71	43.36	38.37	28.93	20.23
63.0	41.07	37.58	27.31	19.07	25.39	34.26	42.13	36.94	26.92	17.35
66.0	39.83	36.17	25.47	16.42	23.45	32.85	40.86	35.47	24.89	14.50
69.0	38.53	34.77	23.60	13.66	21.54	31.45	39.58	34.01	22.86	11.80
72.0	37.23	33.39	21.80	10.90	19.71	30.04	38.30	32.60	20.93	9.045
75.0	35.88	32.03	19.98	8.266	18.00	28.65	37.00	31.19	19.12	6.406
78.0	34.49	30.64	18.34	5.839	16.44	27.26	35.63	29.77	17.44	4.133
81.0	33.08	29.26	16.88	3.694	15.01	25.92	34.26	28.39	15.93	2.356
84.0	31.65	27.89	15.53	1.875	13.72	24.48	32.82	27.01	14.55	0.9742
87.0	30.17	26.51	14.34	0.8991	12.52	23.13	31.40	25.56	13.31	0.6087
90.0	28.69	25.14	13.29	0.8143	11.51	21.81	29.88	24.15	12.16	0.5702
93.0	27.23	23.81	12.35	0.8344	10.62	20.58	28.40	22.80	11.22	0.5731
96.0	25.79	22.50	11.54	0.8695	9.918	19.40	26.95	21.51	10.44	0.5759
99.0	24.37	20.07	10.85	0.9049	9.350	16.56	25.33	18.76	9.783	0.6228
102.0	22.61	18.55	10.26	1.005	8.833	16.05	23.71	18.08	9.276	0.7185
105.0	21.35	17.71	8.344	1.010	6.708	15.39	22.41	17.21	7.629	0.7279
108.0	20.16	16.92	7.321	1.008	6.443	14.69	21.19	16.49	7.506	0.7374
111.0	19.08	16.12	7.347	1.006	6.303	13.80	20.04	15.56	7.090	0.7468
114.0	18.03	15.41	7.147	1.015	5.912	12.59	18.63	14.64	6.738	0.7563
117.0	17.07	14.72	7.198	1.040	5.710	11.81	17.31	13.71	6.482	0.7657
120.0	16.19	14.04	6.807	1.065	5.533	11.27	16.38	12.93	6.326	0.7689
123.0	15.33	13.43	6.242	1.081	5.407	10.76	15.49	12.18	6.146	0.7990
126.0	14.50	12.64	5.746	1.111	5.368	10.21	14.66	11.52	6.050	0.8351
129.0	13.66	11.78	5.194	1.126	5.038	9.617	13.85	10.85	5.894	0.8533
132.0	12.83	10.14	4.706	1.141	4.916	9.075	13.04	10.29	5.683	0.8895
135.0	11.97	8.630	4.354	1.161	4.715	8.409	12.25	9.656	5.432	0.9197
138.0	11.10	7.054	4.067	1.178	4.569	7.705	11.29	8.959	5.171	0.9498
141.0	10.20	6.329	3.851	1.196	4.218	7.406	8.802	8.485	4.899	0.9949
144.0	9.306	5.618	3.650	1.216	3.971	6.804	9.491	7.867	4.653	1.010
147.0	8.461	5.180	3.433	1.252	3.790	6.356	8.758	7.309	4.417	1.070
150.0	7.697	4.723	3.212	1.310	3.544	5.813	8.305	6.771	4.266	1.133
153.0	6.984	4.210	3.166	1.314	3.238	5.311	7.573	6.259	3.974	1.169
156.0	6.330	3.823	3.277	1.318	2.886	4.788	6.661	5.736	3.693	1.196
159.0	5.727	3.427	3.284	1.322	2.539	4.275	6.208	5.218	3.396	1.221
162.0	5.112	3.065	3.274	1.326	2.263	3.803	5.592	4.826	3.089	1.246
165.0	4.551	2.820	3.263	1.330	1.806	3.220	5.169	4.093	2.748	1.256
168.0	2.541	2.855	3.252	1.335	1.428	2.602	2.537	3.584	2.386	1.284
171.0	2.303	2.764	3.142	1.339	1.415	1.967	2.271	3.133	2.069	1.293
174.0	1.997	2.532	2.951	1.343	1.402	1.387	2.035	2.560	1.531	1.301
177.0	1.740	2.233	2.437	1.347	1.377	1.357	1.808	2.012	1.367	1.322
180.0	1.407	1.392	1.367	1.347	1.362	1.357	1.417	1.392	1.367	1.337
G/C	300.0	330.0								
0.0	55.95	55.73								
3.0	56.01	55.95								
6.0	55.95	56.03								
9.0	55.70	56.04								
12.0	55.15	55.83								
15.0	54.41	55.38								
18.0	53.46	54.77								
21.0	52.31	54.09								
24.0	51.01	53.41								
27.0	49.55	52.75								
30.0	48.00	52.07								

C Range: 0 - 360DEG
 C Interval: 30.0DEG
 Test Speed: HIGH
 Temperature: 25.3DEG
 Operators: LPC
 Test Date: 2021-12-08

γ Range: 0 - 180DEG
 γ Interval: 1.0DEG
 Test System: EVERFINE GO-2000B_V1 SYSTEM V2.0.362
 Humidity: 65.0%
 Test Distance: 9.200m [K=1.0000]
 Remarks:

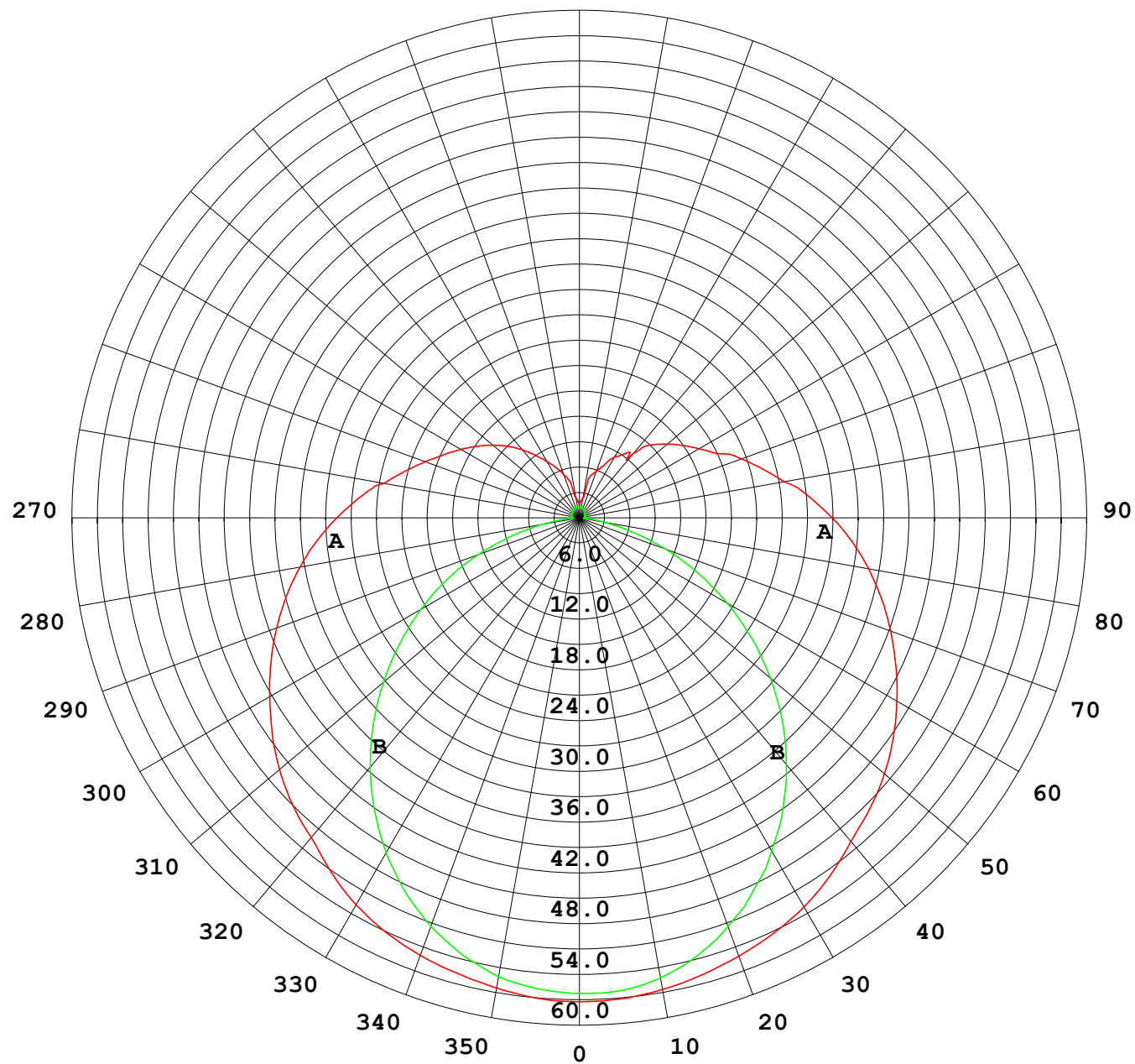
Photometric Data Table [cd]

33.0	46.46	51.29
36.0	44.88	50.41
39.0	43.30	49.40
42.0	41.71	48.28
45.0	40.08	47.06
48.0	38.38	45.69
51.0	36.52	44.22
54.0	34.59	43.08
57.0	32.61	41.93
60.0	30.57	40.65
63.0	28.47	39.37
66.0	26.40	37.98
69.0	24.57	36.55
72.0	22.71	35.21
75.0	20.93	33.89
78.0	19.17	32.56
81.0	17.62	31.24
84.0	16.24	29.91
87.0	14.99	28.56
90.0	13.88	27.24
93.0	12.88	25.92
96.0	11.99	24.61
99.0	11.02	22.24
102.0	10.26	19.82
105.0	9.137	18.85
108.0	9.282	18.49
111.0	8.903	17.67
114.0	8.503	16.64
117.0	7.822	15.55
120.0	7.346	14.65
123.0	6.945	14.11
126.0	6.743	13.57
129.0	6.422	12.86
132.0	6.025	11.55
135.0	5.592	10.45
138.0	5.125	9.206
141.0	4.728	8.449
144.0	4.493	7.762
147.0	4.241	7.088
150.0	3.909	6.465
153.0	3.825	5.887
156.0	3.834	5.259
159.0	3.819	4.661
162.0	3.739	4.083
165.0	3.659	3.800
168.0	3.598	3.752
171.0	3.487	3.649
174.0	3.326	3.448
177.0	3.131	3.282
180.0	1.347	1.382

C Range: 0 - 360DEG
C Interval: 30.0DEG
Test Speed: HIGH
Temperature: 25.3DEG
Operators: LPC
Test Date: 2021-12-08

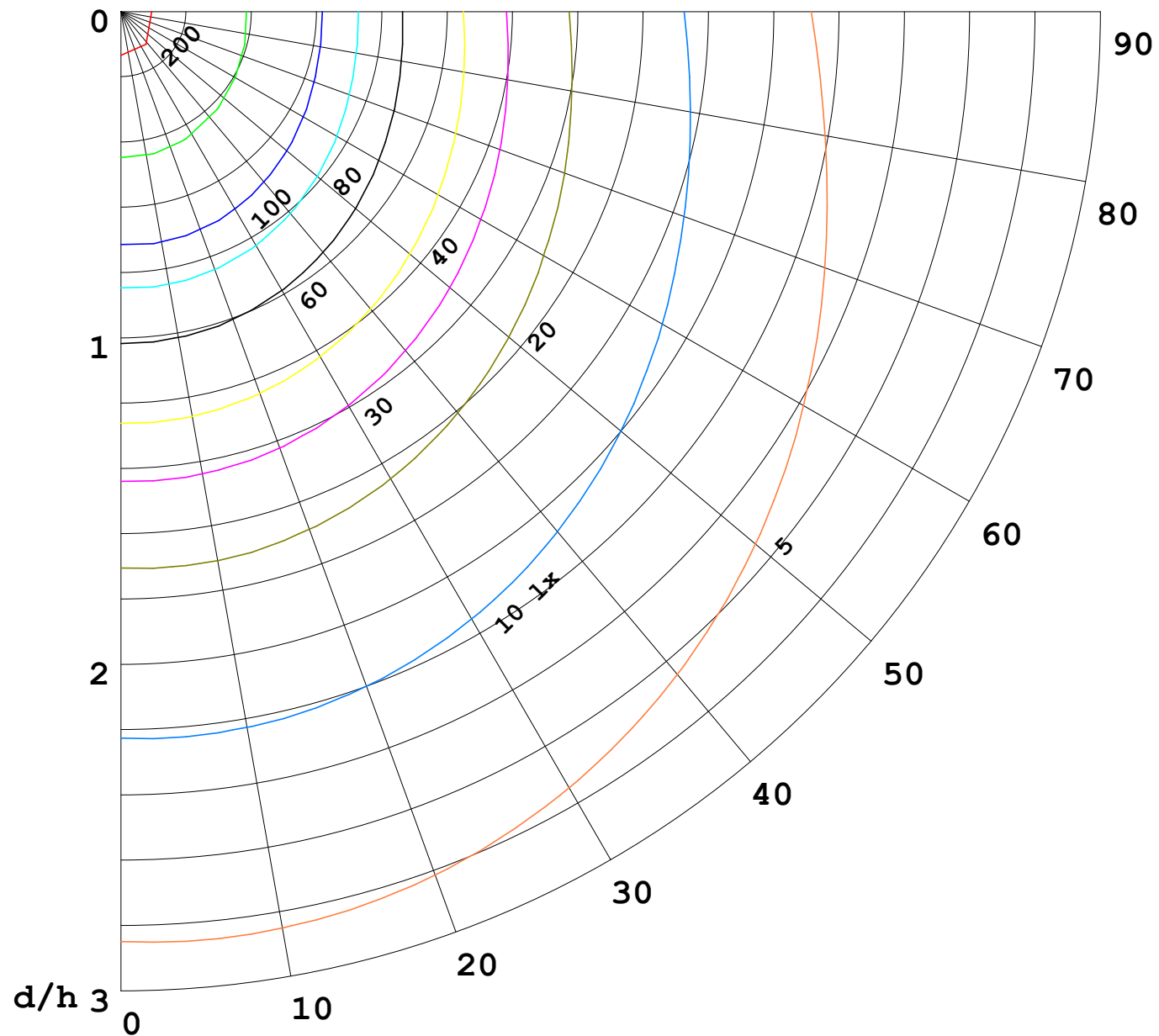
γ Range: 0 - 180DEG
γ Interval: 1.0DEG
Test System: EVERFINE GO-2000B_V1 SYSTEM V2.0.362
Humidity: 65.0%
Test Distance: 9.200m [K=1.0000]
Remarks:

I (cd)



1000 lm

$\kappa = 1$



F = 5000 lm
 K = 0.7
 Hcc = 0.0 m
 Hfc = 0.0 m
 Eave = 100 lx

	Pcc	Pw	Pfc
—	70	50	30
—	50	30	20

